



# Full wwPDB X-ray Structure Validation Report ⓘ

May 16, 2020 – 12:29 am BST

PDB ID : 5B2Y  
Title : Crystal Structure of P450BM3 with N-perfluorodecanoyl-L-tryptophan  
Authors : Cong, Z.; Shoji, O.; Kasai, C.; Sugimoto, H.; Shiro, Y.; Watanabe, Y.  
Deposited on : 2016-02-07  
Resolution : 2.01 Å(reported)

This is a Full wwPDB X-ray Structure Validation Report for a publicly released PDB entry.

We welcome your comments at [validation@mail.wwpdb.org](mailto:validation@mail.wwpdb.org)

A user guide is available at

<https://www.wwpdb.org/validation/2017/XrayValidationReportHelp>

with specific help available everywhere you see the ⓘ symbol.

---

The following versions of software and data (see [references ⓘ](#)) were used in the production of this report:

MolProbity : 4.02b-467  
Mogul : 1.8.5 (274361), CSD as541be (2020)  
Xtriage (Phenix) : 1.13  
EDS : 2.11  
buster-report : 1.1.7 (2018)  
Percentile statistics : 20191225.v01 (using entries in the PDB archive December 25th 2019)  
Refmac : 5.8.0158  
CCP4 : 7.0.044 (Gargrove)  
Ideal geometry (proteins) : Engh & Huber (2001)  
Ideal geometry (DNA, RNA) : Parkinson et al. (1996)  
Validation Pipeline (wwPDB-VP) : 2.11

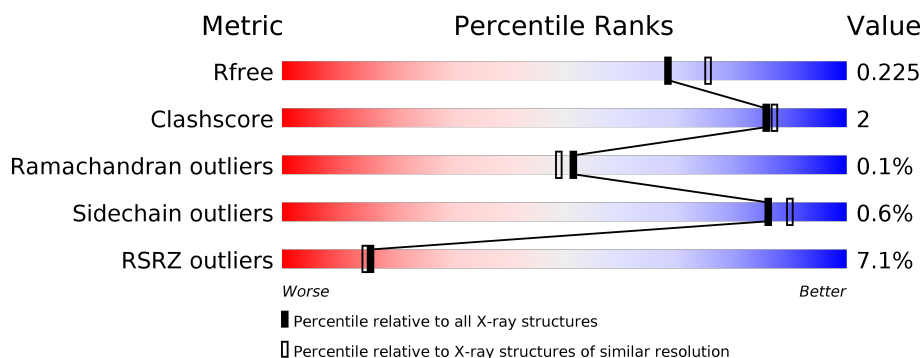
# 1 Overall quality at a glance

The following experimental techniques were used to determine the structure:

*X-RAY DIFFRACTION*

The reported resolution of this entry is 2.01 Å.

Percentile scores (ranging between 0-100) for global validation metrics of the entry are shown in the following graphic. The table shows the number of entries on which the scores are based.



Metric	Whole archive (#Entries)	Similar resolution (#Entries, resolution range(Å))
$R_{free}$	130704	8085 (2.00-2.00)
Clashscore	141614	9178 (2.00-2.00)
Ramachandran outliers	138981	9054 (2.00-2.00)
Sidechain outliers	138945	9053 (2.00-2.00)
RSRZ outliers	127900	7900 (2.00-2.00)

The table below summarises the geometric issues observed across the polymeric chains and their fit to the electron density. The red, orange, yellow and green segments on the lower bar indicate the fraction of residues that contain outliers for  $\geq 3$ , 2, 1 and 0 types of geometric quality criteria respectively. A grey segment represents the fraction of residues that are not modelled. The numeric value for each fraction is indicated below the corresponding segment, with a dot representing fractions  $\leq 5\%$ . The upper red bar (where present) indicates the fraction of residues that have poor fit to the electron density. The numeric value is given above the bar.

Mol	Chain	Length	Quality of chain
1	A	456	<div> <div>9%</div> <div> <div></div> <div>95%</div> <div></div> </div> <div></div> </div>
1	B	456	<div> <div>5%</div> <div> <div></div> <div>95%</div> <div></div> </div> <div></div> </div>

## 2 Entry composition [i](#)

There are 4 unique types of molecules in this entry. The entry contains 8048 atoms, of which 0 are hydrogens and 0 are deuteriums.

In the tables below, the ZeroOcc column contains the number of atoms modelled with zero occupancy, the AltConf column contains the number of residues with at least one atom in alternate conformation and the Trace column contains the number of residues modelled with at most 2 atoms.

- Molecule 1 is a protein called Bifunctional cytochrome P450/NADPH-P450 reductase.

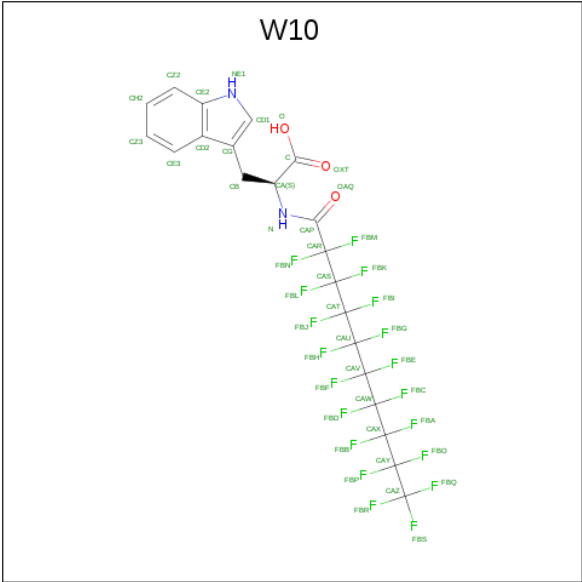
Mol	Chain	Residues	Atoms					ZeroOcc	AltConf	Trace
1	A	452	Total	C	N	O	S	0	4	0
			3680	2352	624	686	18			
1	B	452	Total	C	N	O	S	0	3	0
			3675	2349	624	684	18			

- Molecule 2 is PROTOPORPHYRIN IX CONTAINING FE (three-letter code: HEM) (formula:  $C_{34}H_{32}FeN_4O_4$ ).



Mol	Chain	Residues	Atoms					ZeroOcc	AltConf
2	A	1	Total	C	Fe	N	O	0	0
			43	34	1	4	4		
2	B	1	Total	C	Fe	N	O	0	0
			43	34	1	4	4		

- Molecule 3 is (2 {S})-3-(1 {H}-indol-3-yl)-2-[2,2,3,3,4,4,5,5,6,6,7,7,8,8,9,9,10,10,10-n onadecakis(fluoranyl)decanoylamino]propanoic acid (three-letter code: W10) (formula:  $C_{21}H_{11}F_{19}N_2O_3$ ).



Mol	Chain	Residues	Atoms					ZeroOcc	AltConf
3	A	1	Total	C	F	N	O	0	0
			45	21	19	2	3		
3	B	1	Total	C	F	N	O	0	0
			45	21	19	2	3		

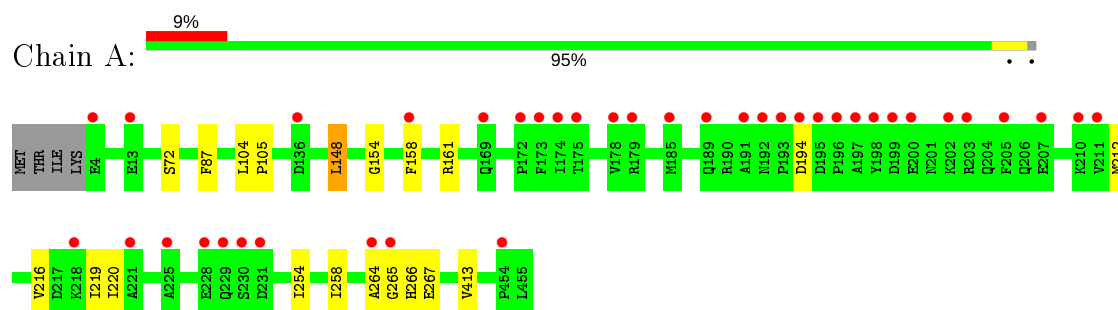
- Molecule 4 is water.

Mol	Chain	Residues	Atoms		ZeroOcc	AltConf
4	A	271	Total	O	0	0
			271	271		
4	B	246	Total	O	0	0
			246	246		

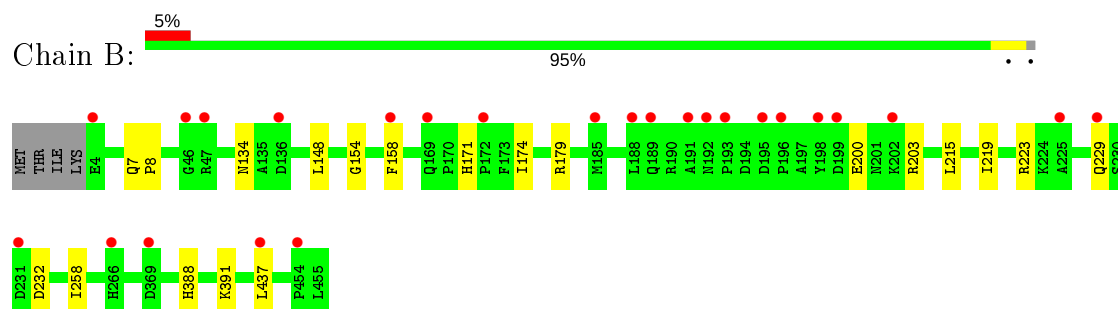
### 3 Residue-property plots [i](#)

These plots are drawn for all protein, RNA and DNA chains in the entry. The first graphic for a chain summarises the proportions of the various outlier classes displayed in the second graphic. The second graphic shows the sequence view annotated by issues in geometry and electron density. Residues are color-coded according to the number of geometric quality criteria for which they contain at least one outlier: green = 0, yellow = 1, orange = 2 and red = 3 or more. A red dot above a residue indicates a poor fit to the electron density ( $RSRZ > 2$ ). Stretches of 2 or more consecutive residues without any outlier are shown as a green connector. Residues present in the sample, but not in the model, are shown in grey.

- Molecule 1: Bifunctional cytochrome P450/NADPH-P450 reductase



- Molecule 1: Bifunctional cytochrome P450/NADPH-P450 reductase



## 4 Data and refinement statistics

Property	Value	Source
Space group	P 1 21 1	Depositor
Cell constants a, b, c, $\alpha$ , $\beta$ , $\gamma$	58.73 Å 145.72 Å 63.19 Å 90.00° 82.85° 90.00°	Depositor
Resolution (Å)	19.76 – 2.01 19.76 – 2.01	Depositor EDS
% Data completeness (in resolution range)	98.5 (19.76-2.01) 98.6 (19.76-2.01)	Depositor EDS
$R_{merge}$	0.06	Depositor
$R_{sym}$	(Not available)	Depositor
$\langle I/\sigma(I) \rangle$ <sup>1</sup>	4.90 (at 2.01 Å)	Xtriage
Refinement program	REFMAC 5.7.0029	Depositor
R, $R_{free}$	0.182 , 0.220 0.190 , 0.225	Depositor DCC
$R_{free}$ test set	3490 reflections (5.05%)	wwPDB-VP
Wilson B-factor (Å <sup>2</sup> )	21.9	Xtriage
Anisotropy	0.107	Xtriage
Bulk solvent $k_{sol}$ (e/Å <sup>3</sup> ), $B_{sol}$ (Å <sup>2</sup> )	0.36 , 46.6	EDS
L-test for twinning <sup>2</sup>	$\langle  L  \rangle = 0.49$ , $\langle L^2 \rangle = 0.32$	Xtriage
Estimated twinning fraction	No twinning to report.	Xtriage
$F_o, F_c$ correlation	0.95	EDS
Total number of atoms	8048	wwPDB-VP
Average B, all atoms (Å <sup>2</sup> )	28.0	wwPDB-VP

Xtriage's analysis on translational NCS is as follows: *The largest off-origin peak in the Patterson function is 6.10% of the height of the origin peak. No significant pseudotranslation is detected.*

<sup>1</sup>Intensities estimated from amplitudes.

<sup>2</sup>Theoretical values of  $\langle |L| \rangle$ ,  $\langle L^2 \rangle$  for acentric reflections are 0.5, 0.333 respectively for untwinned datasets, and 0.375, 0.2 for perfectly twinned datasets.

## 5 Model quality

### 5.1 Standard geometry

Bond lengths and bond angles in the following residue types are not validated in this section: HEM, W10

The Z score for a bond length (or angle) is the number of standard deviations the observed value is removed from the expected value. A bond length (or angle) with  $|Z| > 5$  is considered an outlier worth inspection. RMSZ is the root-mean-square of all Z scores of the bond lengths (or angles).

Mol	Chain	Bond lengths		Bond angles	
		RMSZ	# Z  >5	RMSZ	# Z  >5
1	A	0.43	0/3769	0.60	0/5095
1	B	0.43	0/3762	0.62	0/5086
All	All	0.43	0/7531	0.61	0/10181

There are no bond length outliers.

There are no bond angle outliers.

There are no chirality outliers.

There are no planarity outliers.

### 5.2 Too-close contacts

In the following table, the Non-H and H(model) columns list the number of non-hydrogen atoms and hydrogen atoms in the chain respectively. The H(added) column lists the number of hydrogen atoms added and optimized by MolProbity. The Clashes column lists the number of clashes within the asymmetric unit, whereas Symm-Clashes lists symmetry related clashes.

Mol	Chain	Non-H	H(model)	H(added)	Clashes	Symm-Clashes
1	A	3680	0	3642	14	0
1	B	3675	0	3633	12	0
2	A	43	0	30	4	0
2	B	43	0	30	2	0
3	A	45	0	0	1	0
3	B	45	0	0	2	0
4	A	271	0	0	0	0
4	B	246	0	0	0	0
All	All	8048	0	7335	32	0

The all-atom clashscore is defined as the number of clashes found per 1000 atoms (including hydrogen atoms). The all-atom clashscore for this structure is 2.

All (32) close contacts within the same asymmetric unit are listed below, sorted by their clash magnitude.

Atom-1	Atom-2	Interatomic distance (Å)	Clash overlap (Å)
1:B:154:GLY:O	1:B:158[A]:PHE:HB3	1.90	0.71
1:A:161:ARG:H	1:B:134:ASN:HD21	1.40	0.70
1:B:158[A]:PHE:CE1	1:B:219:ILE:HG21	2.33	0.64
1:B:437:LEU:O	3:B:502:W10:FBE	2.08	0.61
1:A:154:GLY:O	1:A:158[B]:PHE:HB3	2.01	0.61
2:A:501:HEM:HMC2	2:A:501:HEM:HBC2	1.86	0.58
1:B:215:LEU:O	1:B:219:ILE:HD12	2.04	0.57
2:B:501:HEM:HBC2	2:B:501:HEM:HMC2	1.90	0.53
1:A:216:VAL:O	1:A:220:ILE:HG12	2.09	0.53
1:A:104:LEU:N	1:A:105:PRO:HD2	2.27	0.49
1:A:158[B]:PHE:CE1	1:A:258:ILE:HD13	2.48	0.48
1:B:200:GLU:OE2	1:B:203:ARG:NH1	2.48	0.47
2:A:501:HEM:HBB2	2:A:501:HEM:HMB2	1.96	0.47
1:B:223:ARG:NH2	1:B:232:ASP:OD2	2.40	0.47
1:B:388:HIS:HA	1:B:391:LYS:HE2	1.97	0.46
1:A:158[A]:PHE:CE1	1:A:258:ILE:HG12	2.50	0.46
1:A:148:LEU:HD21	1:A:413:VAL:HG21	1.98	0.46
1:A:254:ILE:O	1:A:258:ILE:HG13	2.17	0.45
1:A:212:MET:O	1:A:216:VAL:HG23	2.17	0.44
1:A:220:ILE:HD11	1:A:258:ILE:HD12	1.99	0.44
1:B:171:HIS:HB3	1:B:174:ILE:HD13	2.00	0.43
3:B:502:W10:FBG	3:B:502:W10:FBM	2.18	0.42
1:A:87:PHE:CZ	3:A:502:W10:FBP	2.62	0.42
1:B:7:GLN:HG3	1:B:8:PRO:HD2	2.02	0.41
2:B:501:HEM:HBB2	2:B:501:HEM:HMB2	2.01	0.41
1:A:158[B]:PHE:CE1	1:A:219:ILE:HG21	2.55	0.41
1:A:266:HIS:CG	1:A:267:GLU:N	2.88	0.41
2:A:501:HEM:HBB2	2:A:501:HEM:CMB	2.50	0.41
2:A:501:HEM:HBC2	2:A:501:HEM:CMC	2.51	0.41
1:B:158[A]:PHE:CE1	1:B:219:ILE:CG2	3.03	0.41
1:B:158[B]:PHE:CE1	1:B:258:ILE:HG12	2.56	0.41
1:A:264:ALA:HA	1:A:265:GLY:HA2	1.76	0.40

There are no symmetry-related clashes.



## 5.3 Torsion angles [i](#)

### 5.3.1 Protein backbone [i](#)

In the following table, the Percentiles column shows the percent Ramachandran outliers of the chain as a percentile score with respect to all X-ray entries followed by that with respect to entries of similar resolution.

The Analysed column shows the number of residues for which the backbone conformation was analysed, and the total number of residues.

Mol	Chain	Analysed	Favoured	Allowed	Outliers	Percentiles	
1	A	454/456 (100%)	438 (96%)	15 (3%)	1 (0%)	47	44
1	B	453/456 (99%)	437 (96%)	16 (4%)	0	100	100
All	All	907/912 (100%)	875 (96%)	31 (3%)	1 (0%)	51	49

All (1) Ramachandran outliers are listed below:

Mol	Chain	Res	Type
1	A	72	SER

### 5.3.2 Protein sidechains [i](#)

In the following table, the Percentiles column shows the percent sidechain outliers of the chain as a percentile score with respect to all X-ray entries followed by that with respect to entries of similar resolution.

The Analysed column shows the number of residues for which the sidechain conformation was analysed, and the total number of residues.

Mol	Chain	Analysed	Rotameric	Outliers	Percentiles	
1	A	400/400 (100%)	398 (100%)	2 (0%)	88	92
1	B	399/400 (100%)	396 (99%)	3 (1%)	81	86
All	All	799/800 (100%)	794 (99%)	5 (1%)	86	90

All (5) residues with a non-rotameric sidechain are listed below:

Mol	Chain	Res	Type
1	A	148	LEU
1	A	194	ASP
1	B	148	LEU
1	B	179	ARG
1	B	229	GLN

Some sidechains can be flipped to improve hydrogen bonding and reduce clashes. All (9) such sidechains are listed below:

Mol	Chain	Res	Type
1	A	21	ASN
1	A	110	GLN
1	A	283	ASN
1	A	397	GLN
1	A	404	GLN
1	B	7	GLN
1	B	134	ASN
1	B	186	ASN
1	B	206	GLN

### 5.3.3 RNA [i](#)

There are no RNA molecules in this entry.

## 5.4 Non-standard residues in protein, DNA, RNA chains [i](#)

There are no non-standard protein/DNA/RNA residues in this entry.

## 5.5 Carbohydrates [i](#)

There are no carbohydrates in this entry.

## 5.6 Ligand geometry [i](#)

4 ligands are modelled in this entry.

In the following table, the Counts columns list the number of bonds (or angles) for which Mogul statistics could be retrieved, the number of bonds (or angles) that are observed in the model and the number of bonds (or angles) that are defined in the Chemical Component Dictionary. The Link column lists molecule types, if any, to which the group is linked. The Z score for a bond length (or angle) is the number of standard deviations the observed value is removed from the expected value. A bond length (or angle) with  $|Z| > 2$  is considered an outlier worth inspection. RMSZ is the root-mean-square of all Z scores of the bond lengths (or angles).

Mol	Type	Chain	Res	Link	Bond lengths			Bond angles		
					Counts	RMSZ	$\# Z  > 2$	Counts	RMSZ	$\# Z  > 2$
3	W10	B	502	-	42,46,46	1.23	3 (7%)	68,80,80	1.45	5 (7%)
2	HEM	A	501	1,4	27,50,50	0.87	1 (3%)	17,82,82	1.30	3 (17%)

Mol	Type	Chain	Res	Link	Bond lengths			Bond angles		
					Counts	RMSZ	# Z  > 2	Counts	RMSZ	# Z  > 2
3	W10	A	502	-	42,46,46	1.23	3 (7%)	68,80,80	1.09	4 (5%)
2	HEM	B	501	1,4	27,50,50	0.91	2 (7%)	17,82,82	1.35	2 (11%)

In the following table, the Chirals column lists the number of chiral outliers, the number of chiral centers analysed, the number of these observed in the model and the number defined in the Chemical Component Dictionary. Similar counts are reported in the Torsion and Rings columns. '-' means no outliers of that kind were identified.

Mol	Type	Chain	Res	Link	Chirals	Torsions	Rings
3	W10	B	502	-	-	34/85/90/90	0/2/2/2
2	HEM	A	501	1,4	-	0/6/54/54	-
3	W10	A	502	-	-	29/85/90/90	0/2/2/2
2	HEM	B	501	1,4	-	0/6/54/54	-

All (9) bond length outliers are listed below:

Mol	Chain	Res	Type	Atoms	Z	Observed(Å)	Ideal(Å)
3	A	502	W10	CZ2-CE2	-4.55	1.34	1.41
3	B	502	W10	CZ2-CE2	-4.47	1.34	1.41
3	A	502	W10	CE3-CD2	-3.96	1.34	1.42
3	B	502	W10	CE3-CD2	-3.78	1.34	1.42
3	A	502	W10	CD2-CE2	-2.86	1.35	1.42
3	B	502	W10	CD2-CE2	-2.80	1.35	1.42
2	A	501	HEM	C3B-C2B	-2.51	1.36	1.40
2	B	501	HEM	C4D-C3D	2.42	1.48	1.42
2	B	501	HEM	C3B-C2B	-2.38	1.37	1.40

All (14) bond angle outliers are listed below:

Mol	Chain	Res	Type	Atoms	Z	Observed(°)	Ideal(°)
3	B	502	W10	OAQ-CAP-CAR	7.36	124.04	118.44
3	B	502	W10	CA-N-CAP	4.86	128.17	121.66
3	A	502	W10	CB-CA-N	-4.38	101.05	109.01
3	A	502	W10	OAQ-CAP-CAR	4.08	121.54	118.44
3	B	502	W10	CB-CG-CD1	-3.83	123.23	127.97
3	A	502	W10	CB-CG-CD1	-3.54	123.59	127.97
3	B	502	W10	FBM-CAR-CAP	-3.45	105.53	109.92
2	B	501	HEM	CMA-C3A-C4A	-2.75	124.24	128.46
3	B	502	W10	CB-CA-N	2.66	113.85	109.01
2	B	501	HEM	CBD-CAD-C3D	-2.35	108.14	112.48
2	A	501	HEM	CMA-C3A-C4A	-2.34	124.87	128.46

*Continued on next page...*

*Continued from previous page...*

Mol	Chain	Res	Type	Atoms	Z	Observed(°)	Ideal(°)
3	A	502	W10	CE3-CD2-CE2	2.24	121.14	118.17
2	A	501	HEM	CMC-C2C-C3C	2.15	128.70	124.68
2	A	501	HEM	CBD-CAD-C3D	-2.10	108.61	112.48

There are no chirality outliers.

All (63) torsion outliers are listed below:

Mol	Chain	Res	Type	Atoms
3	B	502	W10	CAW-CAX-CAY-CAZ
3	B	502	W10	OAQ-CAP-CAR-CAS
3	B	502	W10	N-CAP-CAR-CAS
3	B	502	W10	OAQ-CAP-CAR-FBM
3	B	502	W10	N-CAP-CAR-FBM
3	B	502	W10	C-CA-N-CAP
3	B	502	W10	CB-CA-N-CAP
3	A	502	W10	OAQ-CAP-CAR-CAS
3	A	502	W10	N-CAP-CAR-CAS
3	A	502	W10	OAQ-CAP-CAR-FBM
3	A	502	W10	N-CAP-CAR-FBM
3	A	502	W10	C-CA-N-CAP
3	A	502	W10	C-CA-CB-CG
3	B	502	W10	FBL-CAS-CAT-FBJ
3	B	502	W10	FBL-CAS-CAT-CAU
3	B	502	W10	CAR-CAS-CAT-FBI
3	B	502	W10	FBB-CAX-CAY-CAZ
3	B	502	W10	CAW-CAX-CAY-FBO
3	B	502	W10	CAR-CAS-CAT-CAU
3	B	502	W10	FBK-CAS-CAT-FBI
3	B	502	W10	CAR-CAS-CAT-FBJ
3	B	502	W10	FBK-CAS-CAT-CAU
3	B	502	W10	FBO-CAY-CAZ-FBR
3	B	502	W10	FBO-CAY-CAZ-FBS
3	B	502	W10	CAX-CAY-CAZ-FBS
3	B	502	W10	FBO-CAY-CAZ-FBQ
3	B	502	W10	FBP-CAY-CAZ-FBQ
3	B	502	W10	FBP-CAY-CAZ-FBS
3	B	502	W10	FBP-CAY-CAZ-FBR
3	A	502	W10	FBC-CAW-CAX-FBB
3	B	502	W10	FBK-CAS-CAT-FBJ
3	A	502	W10	FBO-CAY-CAZ-FBS
3	B	502	W10	CAX-CAY-CAZ-FBQ
3	A	502	W10	FBO-CAY-CAZ-FBQ

*Continued on next page...*

*Continued from previous page...*

Mol	Chain	Res	Type	Atoms
3	B	502	W10	FBL-CAS-CAT-FBI
3	A	502	W10	CAX-CAY-CAZ-FBR
3	A	502	W10	FBO-CAY-CAZ-FBR
3	B	502	W10	FBB-CAX-CAY-FBO
3	A	502	W10	FBP-CAY-CAZ-FBQ
3	A	502	W10	CAV-CAW-CAX-CAY
3	A	502	W10	FBP-CAY-CAZ-FBS
3	A	502	W10	FBC-CAW-CAX-FBA
3	A	502	W10	FBD-CAW-CAX-FBA
3	A	502	W10	FBC-CAW-CAX-CAY
3	A	502	W10	FBP-CAY-CAZ-FBR
3	A	502	W10	CAX-CAY-CAZ-FBS
3	B	502	W10	FBC-CAW-CAX-FBB
3	A	502	W10	FBD-CAW-CAX-FBB
3	B	502	W10	CAX-CAY-CAZ-FBR
3	A	502	W10	CAV-CAW-CAX-FBB
3	A	502	W10	CAW-CAX-CAY-CAZ
3	B	502	W10	FBC-CAW-CAX-FBA
3	A	502	W10	CAX-CAY-CAZ-FBQ
3	A	502	W10	CAV-CAW-CAX-FBA
3	A	502	W10	CAW-CAX-CAY-FBO
3	A	502	W10	FBD-CAW-CAX-CAY
3	B	502	W10	FBD-CAW-CAX-FBA
3	A	502	W10	FBB-CAX-CAY-CAZ
3	B	502	W10	FBD-CAW-CAX-FBB
3	A	502	W10	CB-CA-N-CAP
3	B	502	W10	CAV-CAW-CAX-FBA
3	B	502	W10	CAV-CAW-CAX-FBB
3	A	502	W10	N-CA-CB-CG

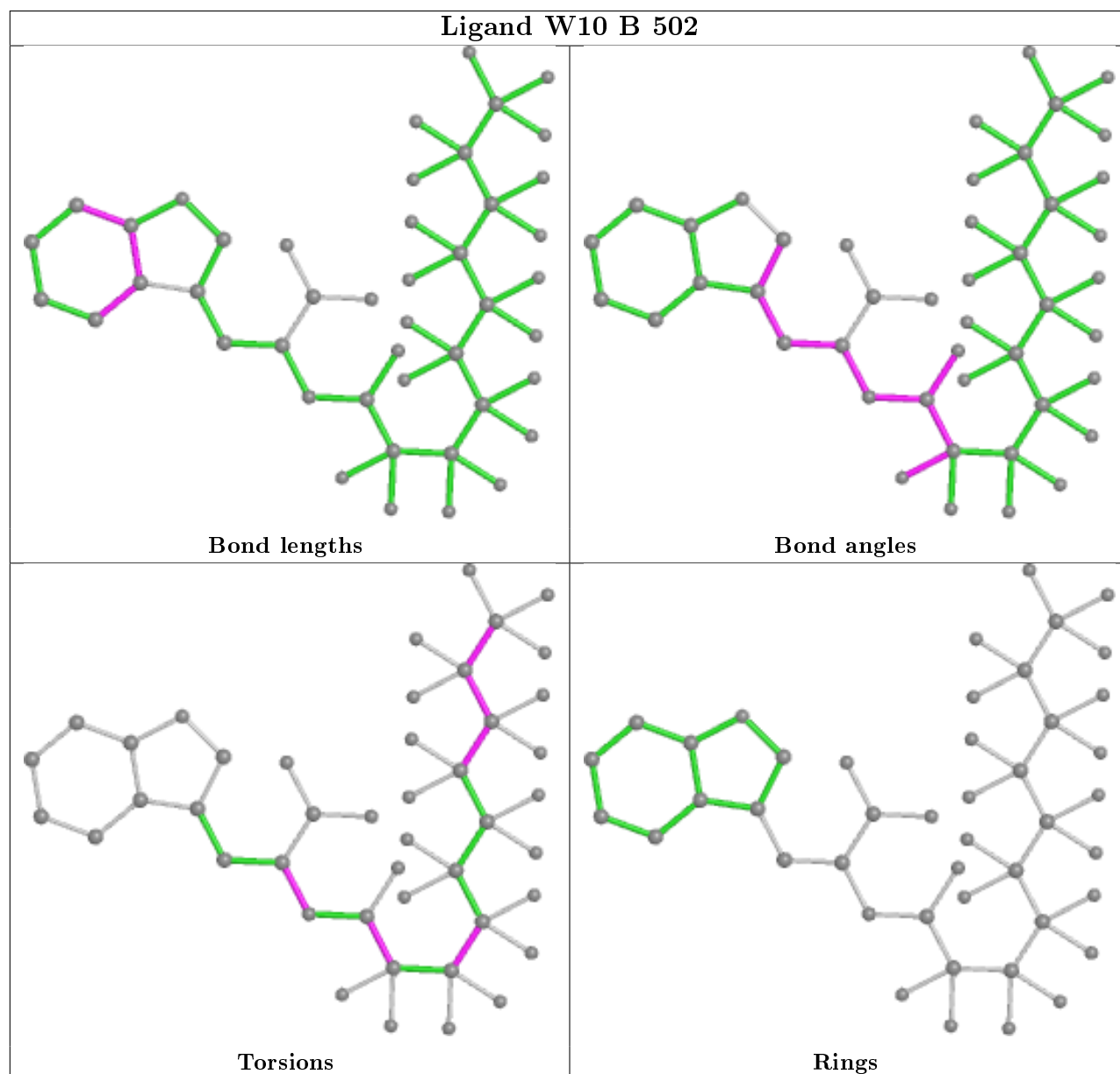
There are no ring outliers.

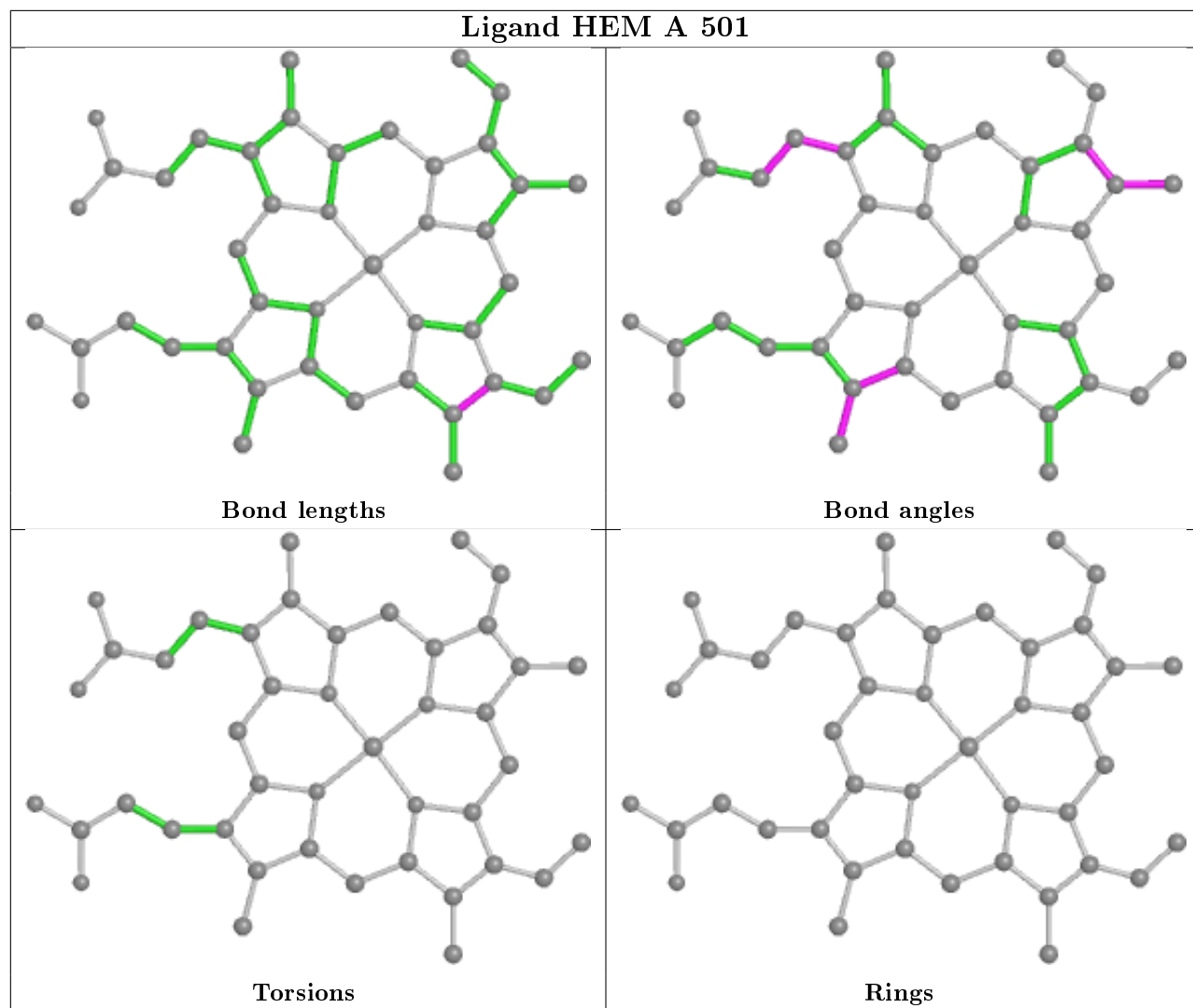
4 monomers are involved in 9 short contacts:

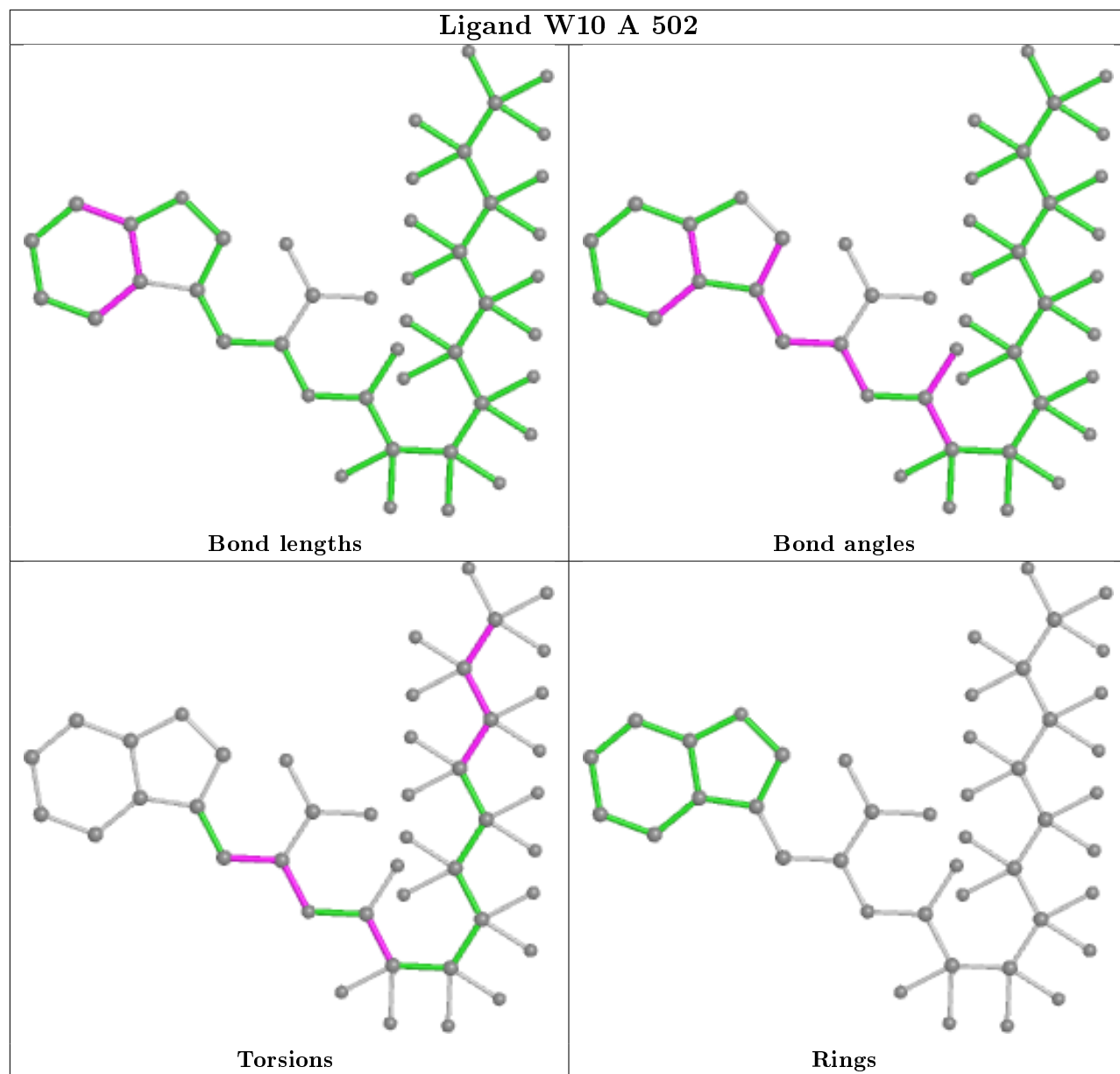
Mol	Chain	Res	Type	Clashes	Symm-Clashes
3	B	502	W10	2	0
2	A	501	HEM	4	0
3	A	502	W10	1	0
2	B	501	HEM	2	0

The following is a two-dimensional graphical depiction of Mogul quality analysis of bond lengths, bond angles, torsion angles, and ring geometry for all instances of the Ligand of Interest. In addition, ligands with molecular weight > 250 and outliers as shown on the validation Tables will

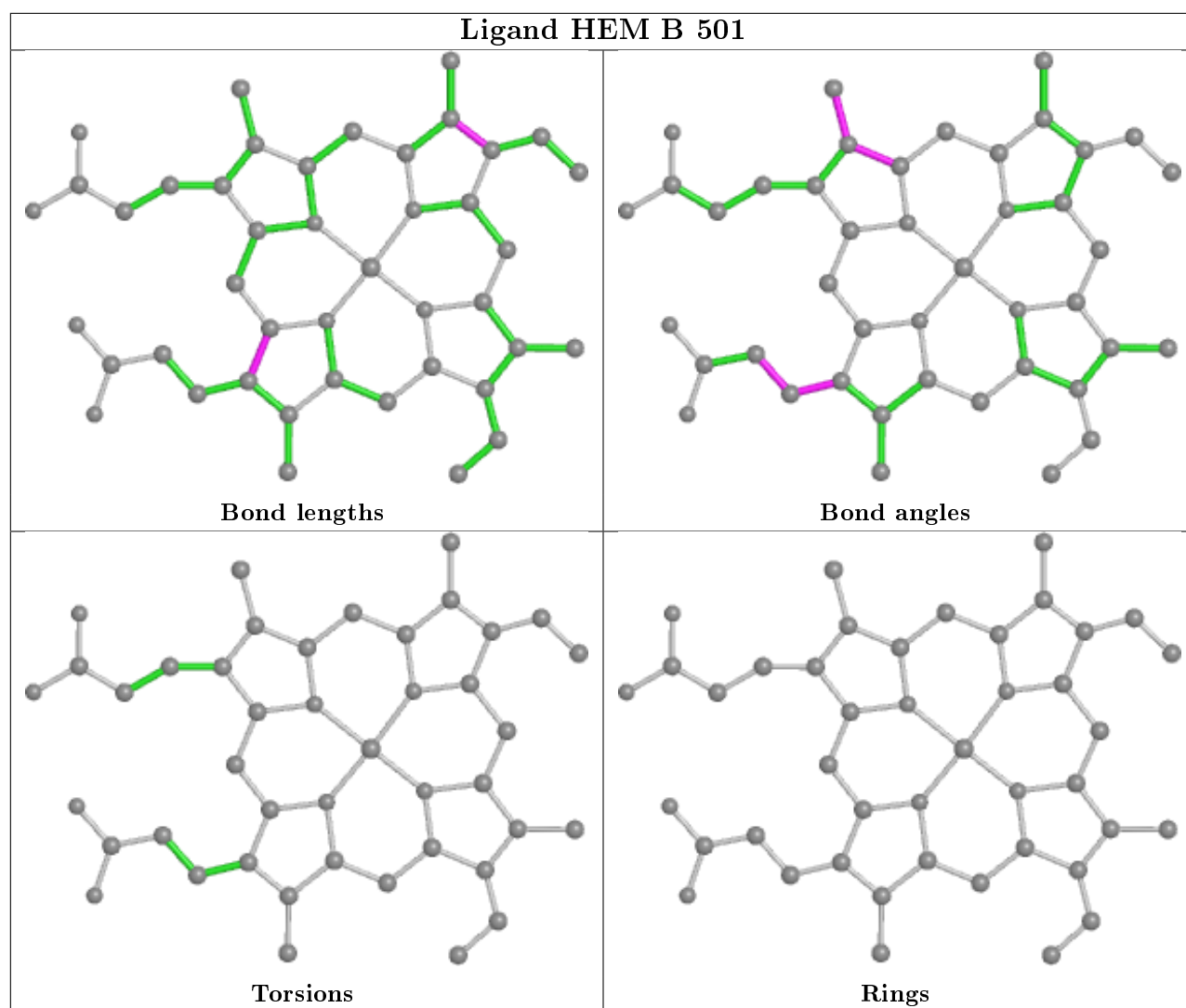
also be included. For torsion angles, if less than 5% of the Mogul distribution of torsion angles is within 10 degrees of the torsion angle in question, then that torsion angle is considered an outlier. Any bond that is central to one or more torsion angles identified as an outlier by Mogul will be highlighted in the graph. For rings, the root-mean-square deviation (RMSD) between the ring in question and similar rings identified by Mogul is calculated over all ring torsion angles. If the average RMSD is greater than 60 degrees and the minimal RMSD between the ring in question and any Mogul-identified rings is also greater than 60 degrees, then that ring is considered an outlier. The outliers are highlighted in purple. The color gray indicates Mogul did not find sufficient equivalents in the CSD to analyse the geometry.











## 5.7 Other polymers [i](#)

There are no such residues in this entry.

## 5.8 Polymer linkage issues [i](#)

There are no chain breaks in this entry.

## 6 Fit of model and data

### 6.1 Protein, DNA and RNA chains

In the following table, the column labelled ‘#RSRZ> 2’ contains the number (and percentage) of RSRZ outliers, followed by percent RSRZ outliers for the chain as percentile scores relative to all X-ray entries and entries of similar resolution. The OWAB column contains the minimum, median, 95<sup>th</sup> percentile and maximum values of the occupancy-weighted average B-factor per residue. The column labelled ‘Q< 0.9’ lists the number of (and percentage) of residues with an average occupancy less than 0.9.

Mol	Chain	Analysed	<RSRZ>	#RSRZ>2	OWAB(Å <sup>2</sup> )	Q<0.9
1	A	452/456 (99%)	0.10	39 (8%) 10 9	13, 23, 62, 76	0
1	B	452/456 (99%)	-0.02	25 (5%) 25 24	13, 23, 57, 93	0
All	All	904/912 (99%)	0.04	64 (7%) 16 15	13, 23, 60, 93	0

All (64) RSRZ outliers are listed below:

Mol	Chain	Res	Type	RSRZ
1	B	191	ALA	6.8
1	B	231	ASP	5.8
1	B	196	PRO	5.7
1	A	231	ASP	4.7
1	A	173	PHE	4.6
1	A	193	PRO	4.5
1	B	192	ASN	4.5
1	A	172	PRO	4.3
1	A	192	ASN	4.0
1	B	193	PRO	3.9
1	A	229	GLN	3.9
1	A	175	THR	3.9
1	A	225	ALA	3.8
1	B	225	ALA	3.8
1	A	194	ASP	3.7
1	A	221	ALA	3.6
1	B	437	LEU	3.6
1	A	4	GLU	3.5
1	A	207	GLU	3.5
1	A	185	MET	3.5
1	B	4	GLU	3.4
1	A	189[A]	GLN	3.4
1	A	158[A]	PHE	3.3
1	B	169	GLN	3.2

*Continued on next page...*

*Continued from previous page...*

Mol	Chain	Res	Type	RSRZ
1	A	198	TYR	3.2
1	A	228	GLU	3.2
1	B	454	PRO	3.1
1	A	454	PRO	3.1
1	A	196	PRO	3.1
1	A	169	GLN	3.0
1	A	191	ALA	3.0
1	A	264	ALA	2.9
1	A	205	PHE	2.9
1	A	265	GLY	2.9
1	A	203	ARG	2.9
1	A	200	GLU	2.9
1	A	210	LYS	2.9
1	B	46	GLY	2.8
1	A	195	ASP	2.8
1	A	199	ASP	2.8
1	B	185	MET	2.8
1	A	136	ASP	2.7
1	B	189	GLN	2.7
1	B	158[A]	PHE	2.6
1	B	172	PRO	2.6
1	A	174	ILE	2.6
1	B	195	ASP	2.6
1	B	202	LYS	2.5
1	A	13	GLU	2.4
1	B	199	ASP	2.4
1	A	218	LYS	2.4
1	B	136	ASP	2.3
1	B	369	ASP	2.3
1	A	230	SER	2.3
1	A	197	ALA	2.2
1	A	211	VAL	2.2
1	B	188	LEU	2.2
1	A	179	ARG	2.2
1	B	229	GLN	2.1
1	B	266	HIS	2.0
1	B	198	TYR	2.0
1	A	202	LYS	2.0
1	B	47	ARG	2.0
1	A	178	VAL	2.0

## 6.2 Non-standard residues in protein, DNA, RNA chains [i](#)

There are no non-standard protein/DNA/RNA residues in this entry.

## 6.3 Carbohydrates [i](#)

There are no carbohydrates in this entry.

## 6.4 Ligands [i](#)

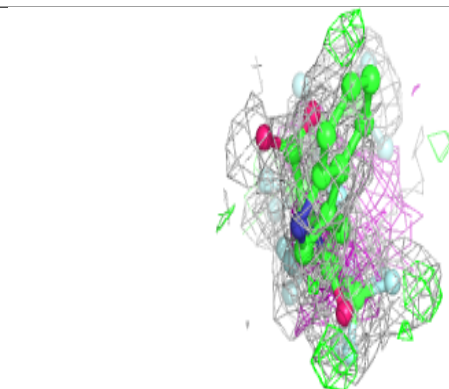
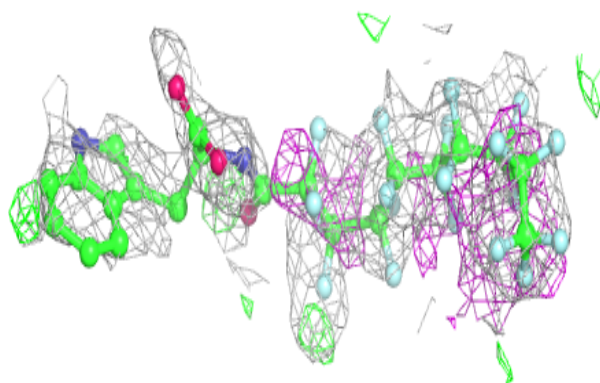
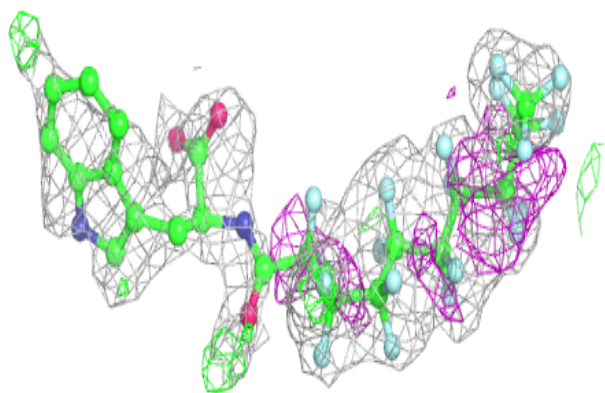
In the following table, the Atoms column lists the number of modelled atoms in the group and the number defined in the chemical component dictionary. The B-factors column lists the minimum, median, 95<sup>th</sup> percentile and maximum values of B factors of atoms in the group. The column labelled 'Q< 0.9' lists the number of atoms with occupancy less than 0.9.

Mol	Type	Chain	Res	Atoms	RSCC	RSR	B-factors( $\text{\AA}^2$ )	Q<0.9
3	W10	B	502	45/45	0.63	0.28	65,81,88,90	0
3	W10	A	502	45/45	0.75	0.23	47,67,81,84	0
2	HEM	A	501	43/43	0.97	0.09	13,15,18,21	0
2	HEM	B	501	43/43	0.98	0.09	13,14,16,20	0

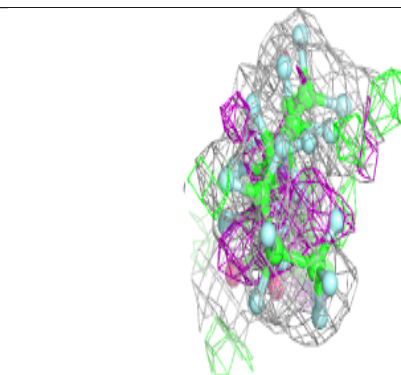
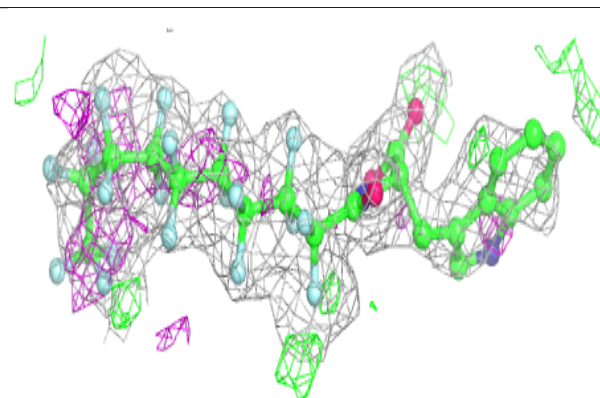
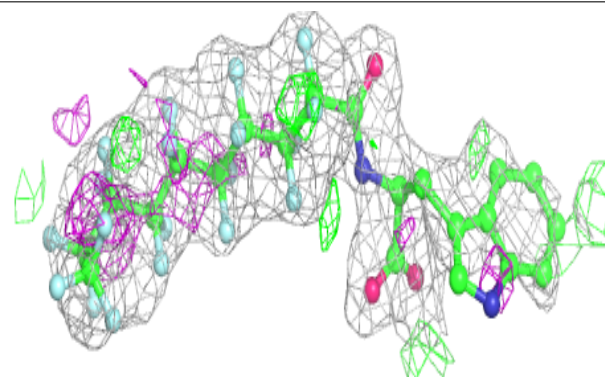
The following is a graphical depiction of the model fit to experimental electron density of all instances of the Ligand of Interest. In addition, ligands with molecular weight > 250 and outliers as shown on the geometry validation Tables will also be included. Each fit is shown from different orientation to approximate a three-dimensional view.

**Electron density around W10 B 502:**

$2mF_o-DF_c$  (at 0.7 rmsd) in gray  
 $mF_o-DF_c$  (at 3 rmsd) in purple (negative)  
and green (positive)

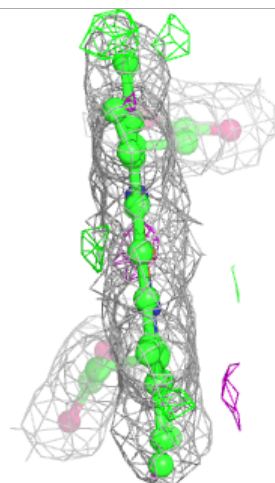
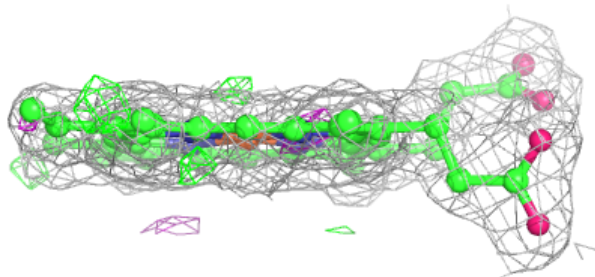
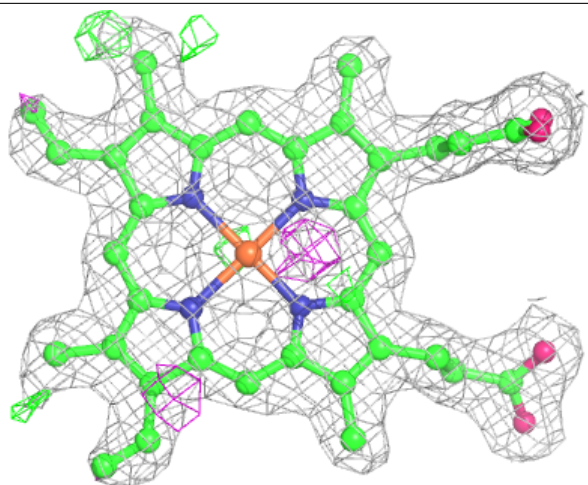
**Electron density around W10 A 502:**

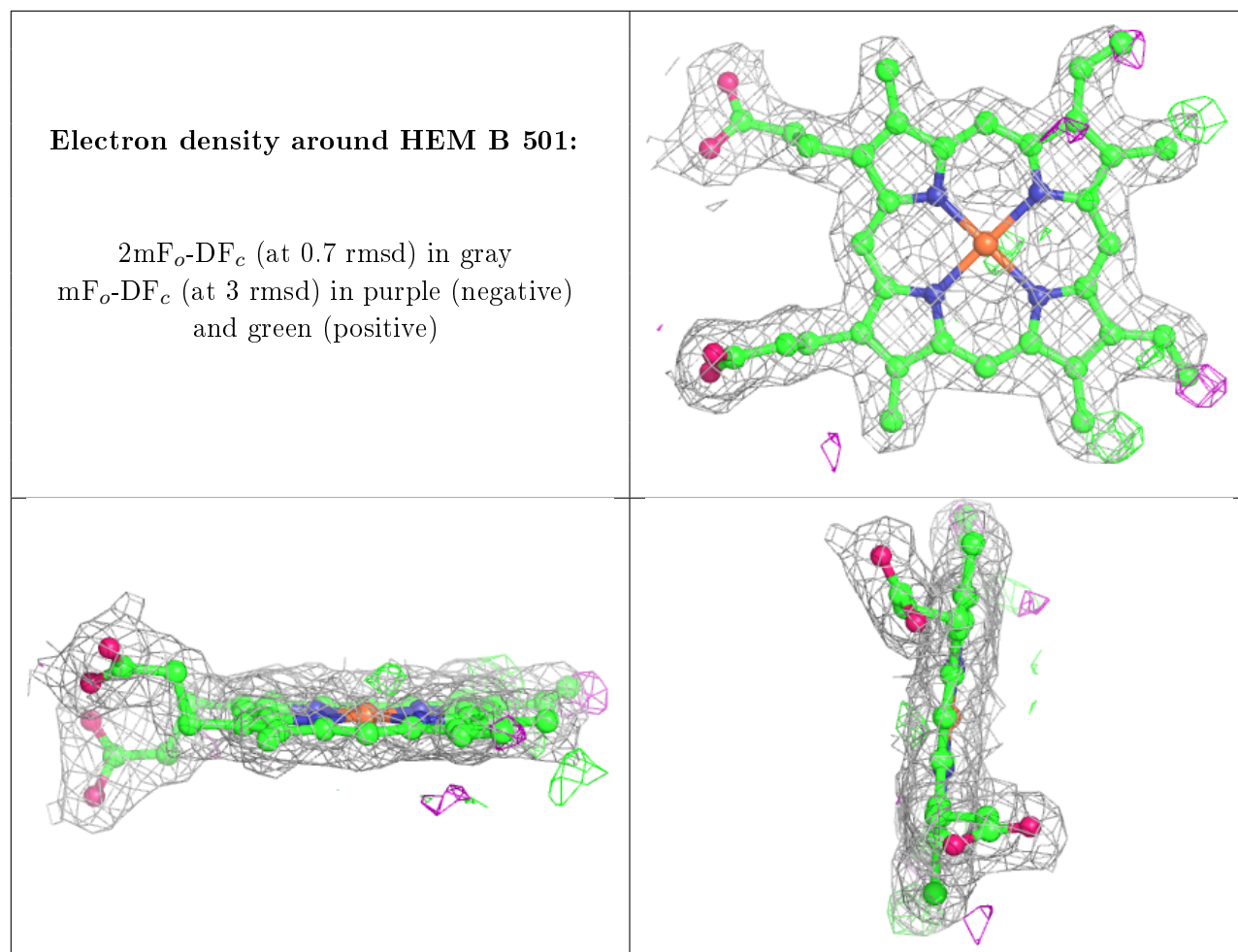
$2mF_o-DF_c$  (at 0.7 rmsd) in gray  
 $mF_o-DF_c$  (at 3 rmsd) in purple (negative)  
and green (positive)



**Electron density around HEM A 501:**

$2mF_o-DF_c$  (at 0.7 rmsd) in gray  
 $mF_o-DF_c$  (at 3 rmsd) in purple (negative)  
and green (positive)





## 6.5 Other polymers [i](#)

There are no such residues in this entry.