



Full wwPDB X-ray Structure Validation Report ⓘ

May 24, 2020 – 03:33 am BST

PDB ID : 6B6U
Title : Pyruvate Kinase M2 mutant - S437Y
Authors : Srivastava, D.; Dey, M.
Deposited on : 2017-10-03
Resolution : 1.35 Å(reported)

This is a Full wwPDB X-ray Structure Validation Report for a publicly released PDB entry.

We welcome your comments at validation@mail.wwpdb.org

A user guide is available at

<https://www.wwpdb.org/validation/2017/XrayValidationReportHelp>

with specific help available everywhere you see the ⓘ symbol.

The following versions of software and data (see [references ⓘ](#)) were used in the production of this report:

MolProbity	:	4.02b-467
Mogul	:	1.8.5 (274361), CSD as541be (2020)
Xtriage (Phenix)	:	1.13
EDS	:	2.11
buster-report	:	1.1.7 (2018)
Percentile statistics	:	20191225.v01 (using entries in the PDB archive December 25th 2019)
Refmac	:	5.8.0158
CCP4	:	7.0.044 (Gargrove)
Ideal geometry (proteins)	:	Engh & Huber (2001)
Ideal geometry (DNA, RNA)	:	Parkinson et al. (1996)
Validation Pipeline (wwPDB-VP)	:	2.11

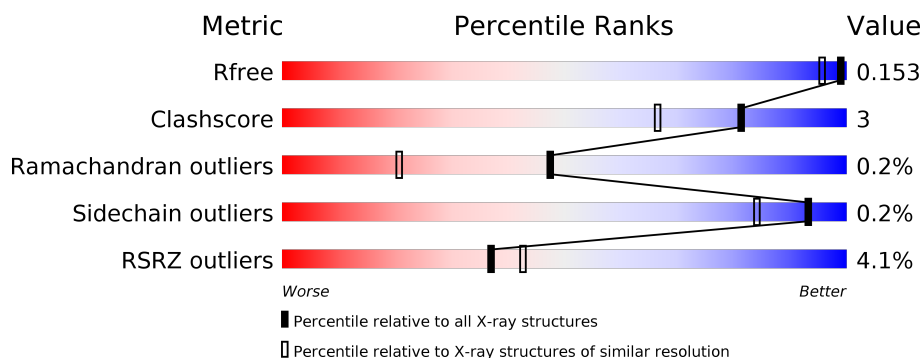
1 Overall quality at a glance

The following experimental techniques were used to determine the structure:

X-RAY DIFFRACTION

The reported resolution of this entry is 1.35 Å.

Percentile scores (ranging between 0-100) for global validation metrics of the entry are shown in the following graphic. The table shows the number of entries on which the scores are based.



Metric	Whole archive (#Entries)	Similar resolution (#Entries, resolution range(Å))
R_{free}	130704	1509 (1.38-1.34)
Clashscore	141614	1551 (1.38-1.34)
Ramachandran outliers	138981	1530 (1.38-1.34)
Sidechain outliers	138945	1530 (1.38-1.34)
RSRZ outliers	127900	1487 (1.38-1.34)

The table below summarises the geometric issues observed across the polymeric chains and their fit to the electron density. The red, orange, yellow and green segments on the lower bar indicate the fraction of residues that contain outliers for ≥ 3 , 2, 1 and 0 types of geometric quality criteria respectively. A grey segment represents the fraction of residues that are not modelled. The numeric value for each fraction is indicated below the corresponding segment, with a dot representing fractions $\leq 5\%$. The upper red bar (where present) indicates the fraction of residues that have poor fit to the electron density. The numeric value is given above the bar.

Mol	Chain	Length	Quality of chain
1	A	525	<div> <div>6%</div> <div> <div></div> <div>94%</div> <div>6%</div> </div> </div>
1	B	525	<div> <div>2%</div> <div> <div></div> <div>95%</div> <div></div> </div> </div>

The following table lists non-polymeric compounds, carbohydrate monomers and non-standard residues in protein, DNA, RNA chains that are outliers for geometric or electron-density-fit criteria:

Mol	Type	Chain	Res	Chirality	Geometry	Clashes	Electron density
10	EDO	B	609	-	-	X	-
6	SCN	A	606	-	-	X	-

2 Entry composition

There are 11 unique types of molecules in this entry. The entry contains 17516 atoms, of which 8277 are hydrogens and 0 are deuteriums.

In the tables below, the ZeroOcc column contains the number of atoms modelled with zero occupancy, the AltConf column contains the number of residues with at least one atom in alternate conformation and the Trace column contains the number of residues modelled with at most 2 atoms.

- Molecule 1 is a protein called Pyruvate kinase PKM.

Mol	Chain	Residues	Atoms						ZeroOcc	AltConf	Trace
1	A	522	Total	C	H	N	O	S	105	24	0
			8199	2591	4111	713	756	28			
1	B	519	Total	C	H	N	O	S	11	18	0
			8104	2549	4080	700	745	30			

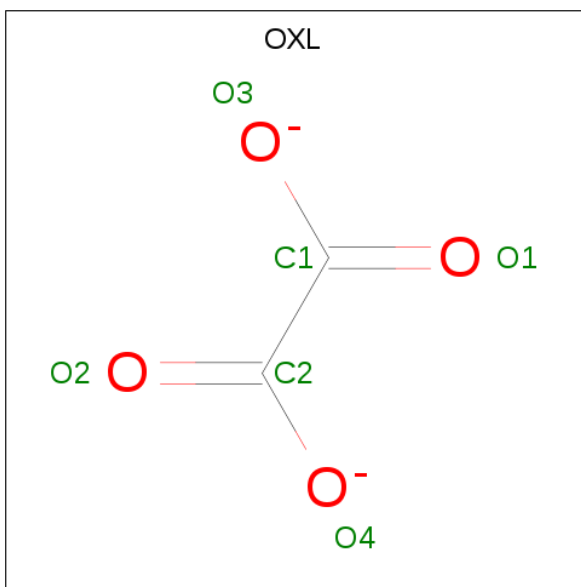
There are 2 discrepancies between the modelled and reference sequences:

Chain	Residue	Modelled	Actual	Comment	Reference
A	437	TYR	SER	engineered mutation	UNP P14618
B	437	TYR	SER	engineered mutation	UNP P14618

- Molecule 2 is MAGNESIUM ION (three-letter code: MG) (formula: Mg).

Mol	Chain	Residues	Atoms		ZeroOcc	AltConf
2	B	1	Total	Mg	0	0
			1	1		
2	A	1	Total	Mg	0	0
			1	1		

- Molecule 3 is OXALATE ION (three-letter code: OXL) (formula: C₂O₄).



Mol	Chain	Residues	Atoms			ZeroOcc	AltConf
3	A	1	Total	C	O	0	0
			6	2	4		
3	B	1	Total	C	O	0	0
			6	2	4		

- Molecule 4 is POTASSIUM ION (three-letter code: K) (formula: K).

Mol	Chain	Residues	Atoms		ZeroOcc	AltConf
4	B	1	Total	K	0	0
			1	1		
4	A	1	Total	K	0	0
			1	1		

- Molecule 5 is CHLORIDE ION (three-letter code: CL) (formula: Cl).

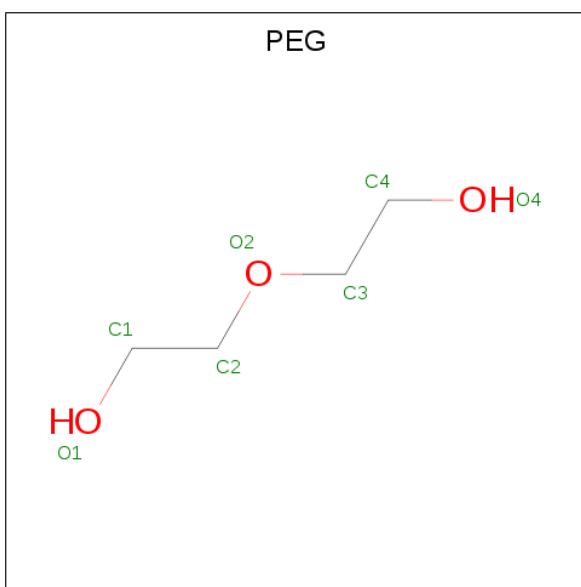
Mol	Chain	Residues	Atoms		ZeroOcc	AltConf
5	B	1	Total	Cl	0	0
			1	1		
5	A	1	Total	Cl	0	0
			1	1		

- Molecule 6 is THIOCYANATE ION (three-letter code: SCN) (formula: CNS).



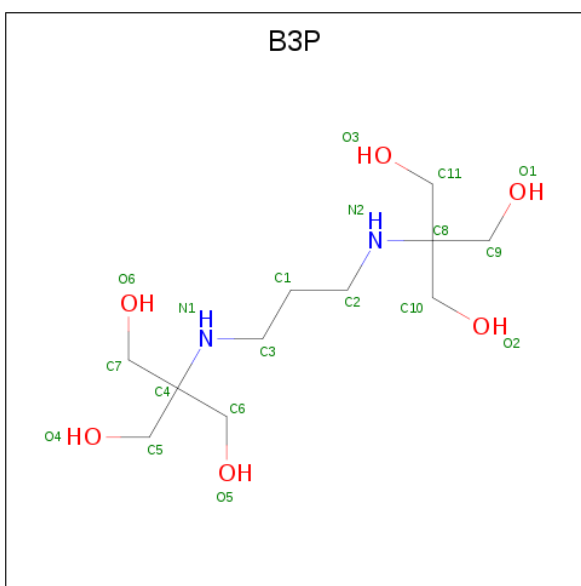
Mol	Chain	Residues	Atoms				ZeroOcc	AltConf
6	A	1	Total	C	N	S	0	0
			3	1	1	1		
6	A	1	Total	C	N	S	0	0
			3	1	1	1		
6	A	1	Total	C	N	S	0	0
			3	1	1	1		
6	B	1	Total	C	N	S	0	0
			3	1	1	1		
6	B	1	Total	C	N	S	0	0
			3	1	1	1		
6	B	1	Total	C	N	S	0	0
			3	1	1	1		

- Molecule 7 is DI(HYDROXYETHYL)ETHER (three-letter code: PEG) (formula: C₄H₁₀O₃).



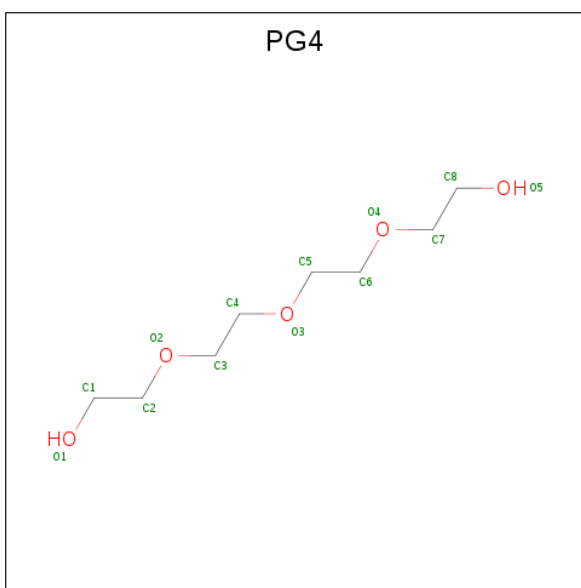
Mol	Chain	Residues	Atoms				ZeroOcc	AltConf
7	A	1	Total	C	H	O	0	0
			17	4	10	3		

- Molecule 8 is 2-[3-(2-HYDROXY-1,1-DIHYDROXYMETHYL-ETHYLAMINO)-PROPYL AMINO]-2-HYDROXYMETHYL-PROPANE-1,3-DIOL (three-letter code: B3P) (formula: $C_{11}H_{26}N_2O_6$).



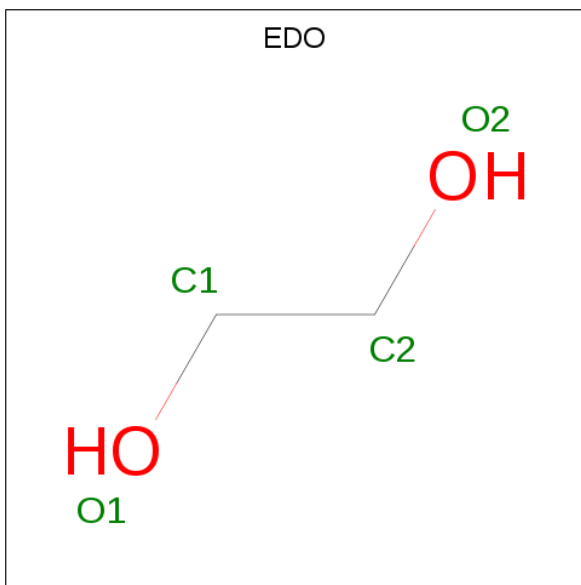
Mol	Chain	Residues	Atoms					ZeroOcc	AltConf
8	A	1	Total	C	H	N	O	0	0
			45	11	26	2	6		
8	B	1	Total	C	H	N	O	0	0
			45	11	26	2	6		

- Molecule 9 is TETRAETHYLENE GLYCOL (three-letter code: PG4) (formula: $C_8H_{18}O_5$).



Mol	Chain	Residues	Atoms				ZeroOcc	AltConf
9	B	1	Total	C	H	O	0	0
			31	8	18	5		

- Molecule 10 is 1,2-ETHANEDIOL (three-letter code: EDO) (formula: $C_2H_6O_2$).



Mol	Chain	Residues	Atoms				ZeroOcc	AltConf
10	B	1	Total	C	H	O	0	0
			10	2	6	2		

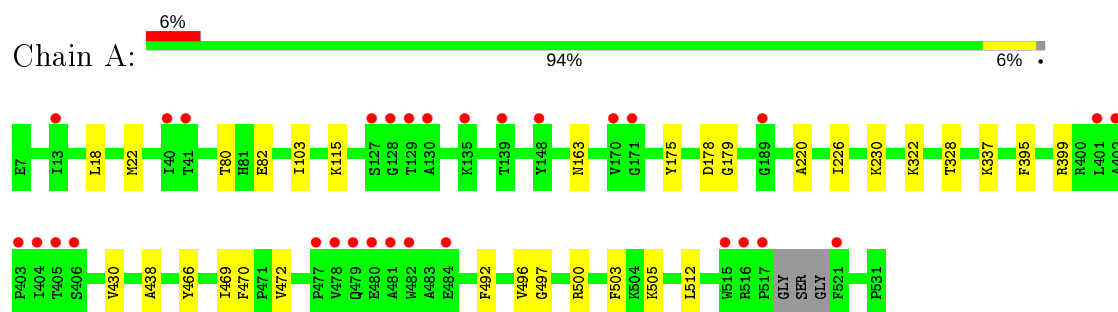
- Molecule 11 is water.

Mol	Chain	Residues	Atoms		ZeroOcc	AltConf
11	A	487	Total 487	O 487	0	0
11	B	542	Total 542	O 542	0	0

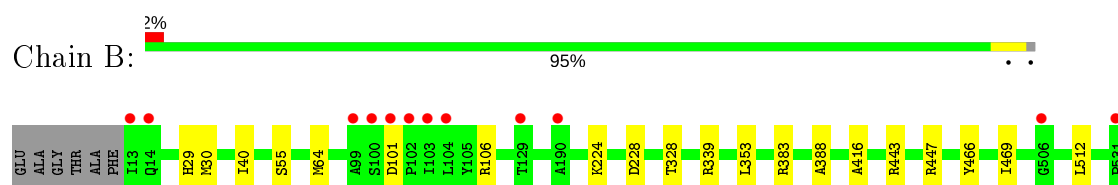
3 Residue-property plots [i](#)

These plots are drawn for all protein, RNA and DNA chains in the entry. The first graphic for a chain summarises the proportions of the various outlier classes displayed in the second graphic. The second graphic shows the sequence view annotated by issues in geometry and electron density. Residues are color-coded according to the number of geometric quality criteria for which they contain at least one outlier: green = 0, yellow = 1, orange = 2 and red = 3 or more. A red dot above a residue indicates a poor fit to the electron density ($RSRZ > 2$). Stretches of 2 or more consecutive residues without any outlier are shown as a green connector. Residues present in the sample, but not in the model, are shown in grey.

• Molecule 1: Pyruvate kinase PKM



• Molecule 1: Pyruvate kinase PKM



4 Data and refinement statistics

Property	Value	Source
Space group	C 1 2 1	Depositor
Cell constants a, b, c, α , β , γ	110.35Å 93.61Å 109.36Å 90.00° 95.64° 90.00°	Depositor
Resolution (Å)	28.98 – 1.35 28.99 – 1.35	Depositor EDS
% Data completeness (in resolution range)	99.1 (28.98-1.35) 99.1 (28.99-1.35)	Depositor EDS
R_{merge}	0.06	Depositor
R_{sym}	(Not available)	Depositor
$\langle I/\sigma(I) \rangle$ ¹	2.13 (at 1.35Å)	Xtriage
Refinement program	PHENIX	Depositor
R, R_{free}	0.130 , 0.149 0.134 , 0.153	Depositor DCC
R_{free} test set	11964 reflections (4.99%)	wwPDB-VP
Wilson B-factor (Å ²)	12.2	Xtriage
Anisotropy	0.259	Xtriage
Bulk solvent k_{sol} (e/Å ³), B_{sol} (Å ²)	0.45 , 50.9	EDS
L-test for twinning ²	$\langle L \rangle = 0.50$, $\langle L^2 \rangle = 0.33$	Xtriage
Estimated twinning fraction	No twinning to report.	Xtriage
F_o, F_c correlation	0.98	EDS
Total number of atoms	17516	wwPDB-VP
Average B, all atoms (Å ²)	18.0	wwPDB-VP

Xtriage's analysis on translational NCS is as follows: *The largest off-origin peak in the Patterson function is 4.07% of the height of the origin peak. No significant pseudotranslation is detected.*

¹Intensities estimated from amplitudes.

²Theoretical values of $\langle |L| \rangle$, $\langle L^2 \rangle$ for acentric reflections are 0.5, 0.333 respectively for untwinned datasets, and 0.375, 0.2 for perfectly twinned datasets.

5 Model quality [i](#)

5.1 Standard geometry [i](#)

Bond lengths and bond angles in the following residue types are not validated in this section: MG, SCN, CL, K, B3P, EDO, OXL, PG4, PEG

The Z score for a bond length (or angle) is the number of standard deviations the observed value is removed from the expected value. A bond length (or angle) with $|Z| > 5$ is considered an outlier worth inspection. RMSZ is the root-mean-square of all Z scores of the bond lengths (or angles).

Mol	Chain	Bond lengths		Bond angles	
		RMSZ	# Z >5	RMSZ	# Z >5
1	A	0.37	0/4225	0.61	0/5708
1	B	0.40	0/4143	0.64	1/5601 (0.0%)
All	All	0.39	0/8368	0.63	1/11309 (0.0%)

There are no bond length outliers.

All (1) bond angle outliers are listed below:

Mol	Chain	Res	Type	Atoms	Z	Observed(°)	Ideal(°)
1	B	106	ARG	NE-CZ-NH2	-5.23	117.69	120.30

There are no chirality outliers.

There are no planarity outliers.

5.2 Too-close contacts [i](#)

In the following table, the Non-H and H(model) columns list the number of non-hydrogen atoms and hydrogen atoms in the chain respectively. The H(added) column lists the number of hydrogen atoms added and optimized by MolProbity. The Clashes column lists the number of clashes within the asymmetric unit, whereas Symm-Clashes lists symmetry related clashes.

Mol	Chain	Non-H	H(model)	H(added)	Clashes	Symm-Clashes
1	A	4088	4111	4153	24	0
1	B	4024	4080	4094	12	0
2	A	1	0	0	0	0
2	B	1	0	0	0	0
3	A	6	0	0	0	0
3	B	6	0	0	0	0
4	A	1	0	0	0	0
4	B	1	0	0	0	0

Continued on next page...

Continued from previous page...

Mol	Chain	Non-H	H(model)	H(added)	Clashes	Symm-Clashes
5	A	1	0	0	1	0
5	B	1	0	0	1	0
6	A	9	0	0	3	0
6	B	9	0	0	0	0
7	A	7	10	10	2	0
8	A	19	26	26	1	0
8	B	19	26	26	0	0
9	B	13	18	18	4	0
10	B	4	6	6	5	0
11	A	487	0	0	7	0
11	B	542	0	0	6	0
All	All	9239	8277	8333	42	0

The all-atom clashscore is defined as the number of clashes found per 1000 atoms (including hydrogen atoms). The all-atom clashscore for this structure is 3.

All (42) close contacts within the same asymmetric unit are listed below, sorted by their clash magnitude.

Atom-1	Atom-2	Interatomic distance (Å)	Clash overlap (Å)
1:A:163[B]:ASN:OD1	11:A:701:HOH:O	2.01	0.77
1:B:447[B]:ARG:NH2	11:B:701:HOH:O	2.15	0.77
1:A:322:LYS:HE3	6:A:606:SCN:S	2.35	0.66
10:B:609:EDO:H21	11:B:980:HOH:O	1.97	0.62
1:A:505:LYS:HG2	7:A:608:PEG:H41	1.86	0.57
11:A:966:HOH:O	9:B:608:PG4:H12	2.04	0.57
9:B:608:PG4:H51	11:B:1029:HOH:O	2.04	0.56
1:B:443:ARG:HD3	11:B:704:HOH:O	2.06	0.56
1:A:322:LYS:CE	6:A:606:SCN:S	2.94	0.55
1:A:220:ALA:HB2	11:A:977:HOH:O	2.06	0.54
1:A:226:ILE:O	1:A:230[B]:LYS:HG2	2.08	0.54
1:B:353:LEU:HD22	10:B:609:EDO:H22	1.93	0.51
1:A:178:ASP:OD2	8:A:609:B3P:H32	2.10	0.51
7:A:608:PEG:H32	11:A:894:HOH:O	2.11	0.50
1:A:337[B]:LYS:HE3	11:A:951:HOH:O	2.11	0.50
1:A:220:ALA:HB3	11:A:716:HOH:O	2.11	0.49
1:A:80:THR:OG1	1:A:82[A]:GLU:OE2	2.20	0.48
1:A:322:LYS:NZ	6:A:606:SCN:S	2.86	0.48
1:B:466:TYR:O	5:B:604:CL:CL	2.69	0.48
1:A:466:TYR:HB2	1:A:469:ILE:HD12	1.95	0.47
1:B:55:SER:HB2	1:B:64[B]:MET:SD	2.54	0.47
1:B:388:ALA:O	10:B:609:EDO:H12	2.14	0.47

Continued on next page...

Continued from previous page...

Atom-1	Atom-2	Interatomic distance (Å)	Clash overlap (Å)
1:A:175:TYR:HB3	1:A:179:GLY:HA2	1.97	0.47
9:B:608:PG4:H32	11:B:945:HOH:O	2.14	0.47
1:A:103:ILE:HD13	1:A:492:PHE:CE1	2.51	0.45
1:A:430[B]:VAL:HG12	1:A:512:LEU:HD12	1.98	0.44
1:A:470:PHE:HZ	1:A:500[B]:ARG:HH21	1.66	0.44
1:A:18:LEU:O	1:A:22[B]:MET:HG3	2.17	0.43
1:A:103:ILE:O	1:A:500[B]:ARG:NH1	2.42	0.43
1:B:224:LYS:HD3	1:B:228:ASP:OD2	2.18	0.43
9:B:608:PG4:H72	10:B:609:EDO:O2	2.19	0.42
1:A:395:PHE:CZ	1:A:399:ARG:HD3	2.55	0.42
1:B:339:ARG:NH1	11:B:723:HOH:O	2.53	0.42
1:B:29:HIS:NE2	10:B:609:EDO:H12	2.34	0.42
1:A:115[A]:LYS:NZ	11:A:708:HOH:O	2.42	0.42
1:A:466:TYR:O	5:A:604:CL:CL	2.75	0.42
1:B:40:ILE:O	1:B:383:ARG:HD2	2.20	0.42
1:B:466:TYR:HB2	1:B:469:ILE:HD12	2.01	0.41
1:B:416:ALA:HB2	1:B:512:LEU:HD21	2.01	0.41
1:A:430[B]:VAL:HG21	1:A:438:ALA:HB2	2.01	0.41
1:A:497:GLY:HA3	1:A:503:PHE:CZ	2.55	0.41
1:A:472:VAL:HG11	1:A:496:VAL:HG11	2.04	0.40

There are no symmetry-related clashes.

5.3 Torsion angles ⓘ

5.3.1 Protein backbone ⓘ

In the following table, the Percentiles column shows the percent Ramachandran outliers of the chain as a percentile score with respect to all X-ray entries followed by that with respect to entries of similar resolution.

The Analysed column shows the number of residues for which the backbone conformation was analysed, and the total number of residues.

Mol	Chain	Analysed	Favoured	Allowed	Outliers	Percentiles	
1	A	542/525 (103%)	536 (99%)	5 (1%)	1 (0%)	47	21
1	B	535/525 (102%)	531 (99%)	3 (1%)	1 (0%)	47	21
All	All	1077/1050 (103%)	1067 (99%)	8 (1%)	2 (0%)	47	21

All (2) Ramachandran outliers are listed below:

Mol	Chain	Res	Type
1	A	328	THR
1	B	328	THR

5.3.2 Protein sidechains ⓘ

In the following table, the Percentiles column shows the percent sidechain outliers of the chain as a percentile score with respect to all X-ray entries followed by that with respect to entries of similar resolution.

The Analysed column shows the number of residues for which the sidechain conformation was analysed, and the total number of residues.

Mol	Chain	Analysed	Rotameric	Outliers	Percentiles	
1	A	434/430 (101%)	434 (100%)	0	100	100
1	B	427/430 (99%)	424 (99%)	3 (1%)	84	64
All	All	861/860 (100%)	858 (100%)	3 (0%)	93	83

All (3) residues with a non-rotameric sidechain are listed below:

Mol	Chain	Res	Type
1	B	30[A]	MET
1	B	30[B]	MET
1	B	101	ASP

Some sidechains can be flipped to improve hydrogen bonding and reduce clashes. There are no such sidechains identified.

5.3.3 RNA ⓘ

There are no RNA molecules in this entry.

5.4 Non-standard residues in protein, DNA, RNA chains ⓘ

There are no non-standard protein/DNA/RNA residues in this entry.

5.5 Carbohydrates ⓘ

There are no carbohydrates in this entry.

5.6 Ligand geometry

Of 19 ligands modelled in this entry, 6 are monoatomic - leaving 13 for Mogul analysis.

In the following table, the Counts columns list the number of bonds (or angles) for which Mogul statistics could be retrieved, the number of bonds (or angles) that are observed in the model and the number of bonds (or angles) that are defined in the Chemical Component Dictionary. The Link column lists molecule types, if any, to which the group is linked. The Z score for a bond length (or angle) is the number of standard deviations the observed value is removed from the expected value. A bond length (or angle) with $|Z| > 2$ is considered an outlier worth inspection. RMSZ is the root-mean-square of all Z scores of the bond lengths (or angles).

Mol	Type	Chain	Res	Link	Bond lengths			Bond angles		
					Counts	RMSZ	$\# Z > 2$	Counts	RMSZ	$\# Z > 2$
6	SCN	B	606	-	1,2,2	0.43	0	0,1,1	0.00	-
9	PG4	B	608	-	12,12,12	0.49	0	11,11,11	0.95	0
3	OXL	A	602	2	0,5,5	0.00	-	0,6,6	0.00	-
3	OXL	B	602	2	0,5,5	0.00	-	0,6,6	0.00	-
8	B3P	B	610	-	18,18,18	0.41	0	21,23,23	1.12	0
6	SCN	A	607	-	1,2,2	0.51	0	0,1,1	0.00	-
10	EDO	B	609	-	3,3,3	0.26	0	2,2,2	0.63	0
6	SCN	B	607	-	1,2,2	0.26	0	0,1,1	0.00	-
6	SCN	A	606	-	1,2,2	0.69	0	0,1,1	0.00	-
8	B3P	A	609	-	18,18,18	0.42	0	21,23,23	1.19	0
6	SCN	A	605	-	1,2,2	0.50	0	0,1,1	0.00	-
6	SCN	B	605	-	1,2,2	0.52	0	0,1,1	0.00	-
7	PEG	A	608	-	6,6,6	0.55	0	5,5,5	0.56	0

In the following table, the Chirals column lists the number of chiral outliers, the number of chiral centers analysed, the number of these observed in the model and the number defined in the Chemical Component Dictionary. Similar counts are reported in the Torsion and Rings columns. '-' means no outliers of that kind were identified.

Mol	Type	Chain	Res	Link	Chirals	Torsions	Rings
3	OXL	A	602	2	-	0/0/4/4	-
3	OXL	B	602	2	-	0/0/4/4	-
8	B3P	B	610	-	-	3/28/28/28	-
10	EDO	B	609	-	-	1/1/1/1	-
9	PG4	B	608	-	-	6/10/10/10	-
8	B3P	A	609	-	-	4/28/28/28	-
7	PEG	A	608	-	-	3/4/4/4	-

There are no bond length outliers.

There are no bond angle outliers.

There are no chirality outliers.

All (17) torsion outliers are listed below:

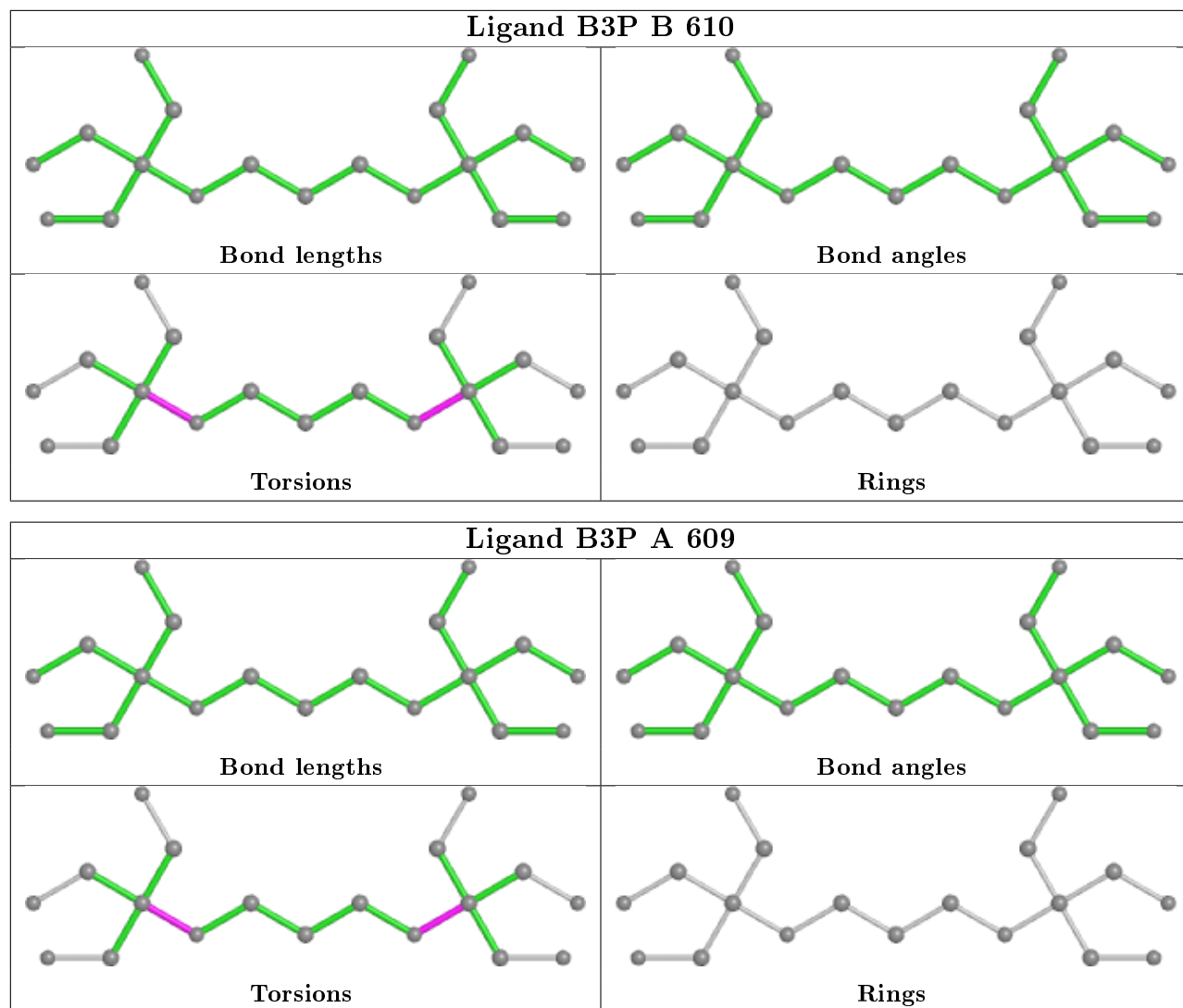
Mol	Chain	Res	Type	Atoms
8	A	609	B3P	C5-C4-N1-C3
8	A	609	B3P	C6-C4-N1-C3
9	B	608	PG4	O3-C5-C6-O4
7	A	608	PEG	O2-C3-C4-O4
9	B	608	PG4	O4-C7-C8-O5
9	B	608	PG4	C6-C5-O3-C4
8	A	609	B3P	C7-C4-N1-C3
8	A	609	B3P	C10-C8-N2-C2
9	B	608	PG4	C8-C7-O4-C6
7	A	608	PEG	C4-C3-O2-C2
9	B	608	PG4	C5-C6-O4-C7
9	B	608	PG4	O2-C3-C4-O3
8	B	610	B3P	C9-C8-N2-C2
8	B	610	B3P	C10-C8-N2-C2
7	A	608	PEG	O1-C1-C2-O2
10	B	609	EDO	O1-C1-C2-O2
8	B	610	B3P	C6-C4-N1-C3

There are no ring outliers.

5 monomers are involved in 14 short contacts:

Mol	Chain	Res	Type	Clashes	Symm-Clashes
9	B	608	PG4	4	0
10	B	609	EDO	5	0
6	A	606	SCN	3	0
8	A	609	B3P	1	0
7	A	608	PEG	2	0

The following is a two-dimensional graphical depiction of Mogul quality analysis of bond lengths, bond angles, torsion angles, and ring geometry for all instances of the Ligand of Interest. In addition, ligands with molecular weight > 250 and outliers as shown on the validation Tables will also be included. For torsion angles, if less than 5% of the Mogul distribution of torsion angles is within 10 degrees of the torsion angle in question, then that torsion angle is considered an outlier. Any bond that is central to one or more torsion angles identified as an outlier by Mogul will be highlighted in the graph. For rings, the root-mean-square deviation (RMSD) between the ring in question and similar rings identified by Mogul is calculated over all ring torsion angles. If the average RMSD is greater than 60 degrees and the minimal RMSD between the ring in question and any Mogul-identified rings is also greater than 60 degrees, then that ring is considered an outlier. The outliers are highlighted in purple. The color gray indicates Mogul did not find sufficient equivalents in the CSD to analyse the geometry.



5.7 Other polymers [i](#)

There are no such residues in this entry.

5.8 Polymer linkage issues [i](#)

There are no chain breaks in this entry.

6 Fit of model and data ⓘ

6.1 Protein, DNA and RNA chains ⓘ

In the following table, the column labelled ‘#RSRZ> 2’ contains the number (and percentage) of RSRZ outliers, followed by percent RSRZ outliers for the chain as percentile scores relative to all X-ray entries and entries of similar resolution. The OWAB column contains the minimum, median, 95th percentile and maximum values of the occupancy-weighted average B-factor per residue. The column labelled ‘Q< 0.9’ lists the number of (and percentage) of residues with an average occupancy less than 0.9.

Mol	Chain	Analysed	<RSRZ>	#RSRZ>2		OWAB(Å ²)	Q<0.9
1	A	516/525 (98%)	0.05	30 (5%)	23 25	7, 13, 34, 49	5 (0%)
1	B	519/525 (98%)	-0.15	12 (2%)	60 66	7, 13, 30, 51	1 (0%)
All	All	1035/1050 (98%)	-0.05	42 (4%)	37 43	7, 13, 33, 51	6 (0%)

All (42) RSRZ outliers are listed below:

Mol	Chain	Res	Type	RSRZ
1	B	13	ILE	11.2
1	A	404	ILE	7.3
1	B	104	LEU	6.5
1	A	517	PRO	6.2
1	A	515	TRP	6.1
1	A	482	TRP	5.7
1	A	13	ILE	5.5
1	B	190	ALA	5.1
1	B	103	ILE	5.1
1	A	516	ARG	4.7
1	A	170	VAL	4.7
1	A	521	PHE	4.6
1	B	531	PRO	4.3
1	A	129	THR	4.2
1	B	101	ASP	3.9
1	B	102	PRO	3.8
1	A	478	VAL	3.7
1	A	406	SER	3.6
1	A	480	GLU	3.5
1	B	506	GLY	3.5
1	A	402	ALA	3.4
1	B	14	GLN	3.4
1	B	129	THR	3.4
1	A	128	GLY	3.3

Continued on next page...

Continued from previous page...

Mol	Chain	Res	Type	RSRZ
1	B	100	SER	3.2
1	A	403	PRO	3.1
1	A	481	ALA	3.0
1	A	401	LEU	3.0
1	A	189	GLY	3.0
1	A	479	GLN	2.9
1	A	130	ALA	2.8
1	A	484	GLU	2.8
1	A	127	SER	2.7
1	A	41	THR	2.6
1	A	477	PRO	2.5
1	A	135	LYS	2.5
1	A	139	THR	2.4
1	A	405	THR	2.3
1	A	148	TYR	2.2
1	A	40	ILE	2.2
1	A	171	GLY	2.2
1	B	99	ALA	2.1

6.2 Non-standard residues in protein, DNA, RNA chains [i](#)

There are no non-standard protein/DNA/RNA residues in this entry.

6.3 Carbohydrates [i](#)

There are no carbohydrates in this entry.

6.4 Ligands [i](#)

In the following table, the Atoms column lists the number of modelled atoms in the group and the number defined in the chemical component dictionary. The B-factors column lists the minimum, median, 95th percentile and maximum values of B factors of atoms in the group. The column labelled 'Q< 0.9' lists the number of atoms with occupancy less than 0.9.

Mol	Type	Chain	Res	Atoms	RSCC	RSR	B-factors(\AA^2)	Q<0.9
9	PG4	B	608	13/13	0.61	0.20	42,52,62,62	0
6	SCN	A	606	3/3	0.75	0.20	47,47,47,47	0
8	B3P	A	609	19/19	0.86	0.16	18,29,37,39	45
7	PEG	A	608	7/7	0.86	0.23	31,38,42,42	0
10	EDO	B	609	4/4	0.92	0.17	11,25,29,33	0

Continued on next page...

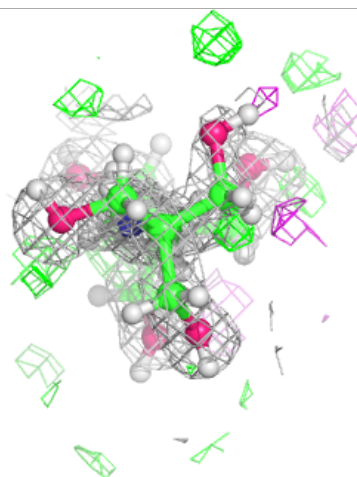
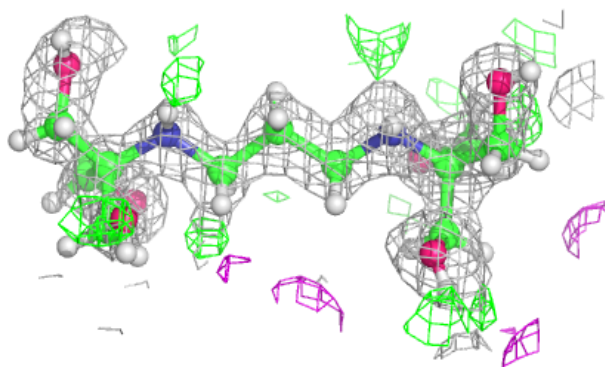
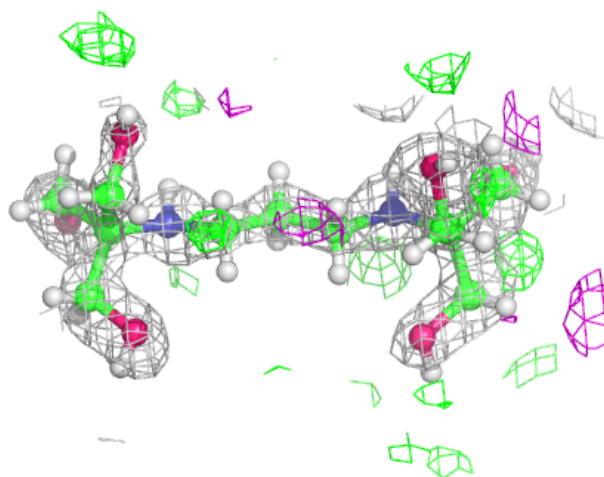
Continued from previous page...

Mol	Type	Chain	Res	Atoms	RSCC	RSR	B-factors(\AA^2)	Q<0.9
6	SCN	B	607	3/3	0.94	0.10	10,10,16,22	0
8	B3P	B	610	19/19	0.95	0.09	14,22,26,31	0
6	SCN	A	605	3/3	0.96	0.10	40,40,42,44	0
6	SCN	B	606	3/3	0.99	0.11	26,26,27,29	0
3	OXL	A	602	6/6	0.99	0.07	9,10,11,13	0
3	OXL	B	602	6/6	0.99	0.08	9,9,11,12	0
6	SCN	B	605	3/3	0.99	0.05	24,24,24,25	0
6	SCN	A	607	3/3	0.99	0.06	20,20,23,25	0
4	K	B	603	1/1	1.00	0.06	10,10,10,10	0
4	K	A	603	1/1	1.00	0.05	10,10,10,10	0
5	CL	B	604	1/1	1.00	0.07	10,10,10,10	0
5	CL	A	604	1/1	1.00	0.09	10,10,10,10	0
2	MG	B	601	1/1	1.00	0.05	9,9,9,9	0
2	MG	A	601	1/1	1.00	0.06	9,9,9,9	0

The following is a graphical depiction of the model fit to experimental electron density of all instances of the Ligand of Interest. In addition, ligands with molecular weight > 250 and outliers as shown on the geometry validation Tables will also be included. Each fit is shown from different orientation to approximate a three-dimensional view.

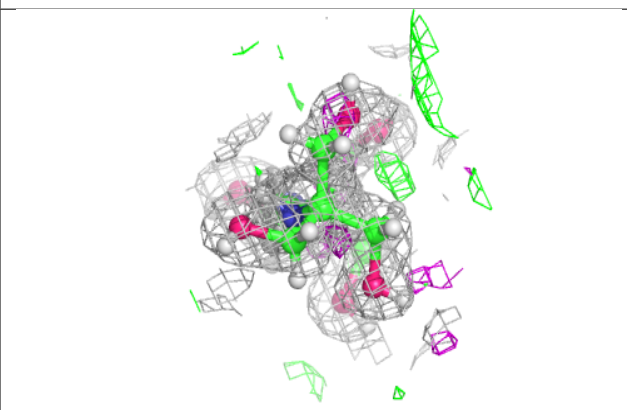
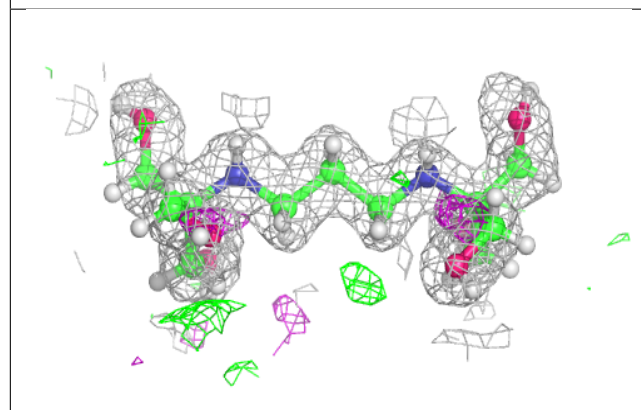
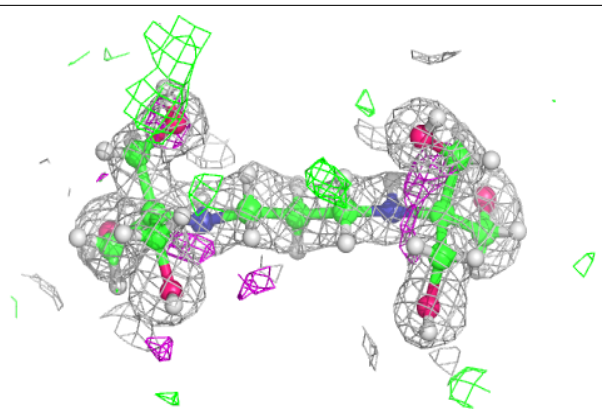
Electron density around B3P A 609:

$2mF_o-DF_c$ (at 0.7 rmsd) in gray
 mF_o-DF_c (at 3 rmsd) in purple (negative)
and green (positive)



Electron density around B3P B 610:

$2mF_o-DF_c$ (at 0.7 rmsd) in gray
 mF_o-DF_c (at 3 rmsd) in purple (negative)
and green (positive)



6.5 Other polymers [i](#)

There are no such residues in this entry.