



# Full wwPDB X-ray Structure Validation Report ⓘ

May 25, 2020 – 12:46 am BST

PDB ID : 4B71  
Title : Discovery of an allosteric mechanism for the regulation of HCV NS3 protein function  
Authors : Saalau-Bethell, S.M.; Woodhead, A.J.; Chessari, G.; Carr, M.G.; Coyle, J.; Graham, B.; Hiscock, S.D.; Murray, C.W.; Pathuri, P.; Rich, S.J.; Richardson, C.J.; Williams, P.A.; Jhoti, H.  
Deposited on : 2012-08-16  
Resolution : 2.50 Å(reported)

This is a Full wwPDB X-ray Structure Validation Report for a publicly released PDB entry.

We welcome your comments at [validation@mail.wwpdb.org](mailto:validation@mail.wwpdb.org)

A user guide is available at

<https://www.wwpdb.org/validation/2017/XrayValidationReportHelp>

with specific help available everywhere you see the ⓘ symbol.

---

The following versions of software and data (see [references ⓘ](#)) were used in the production of this report:

MolProbity	:	4.02b-467
Mogul	:	1.8.5 (274361), CSD as541be (2020)
Xtriage (Phenix)	:	1.13
EDS	:	2.11
buster-report	:	1.1.7 (2018)
Percentile statistics	:	20191225.v01 (using entries in the PDB archive December 25th 2019)
Refmac	:	5.8.0158
CCP4	:	7.0.044 (Gargrove)
Ideal geometry (proteins)	:	Engh & Huber (2001)
Ideal geometry (DNA, RNA)	:	Parkinson et al. (1996)
Validation Pipeline (wwPDB-VP)	:	2.11

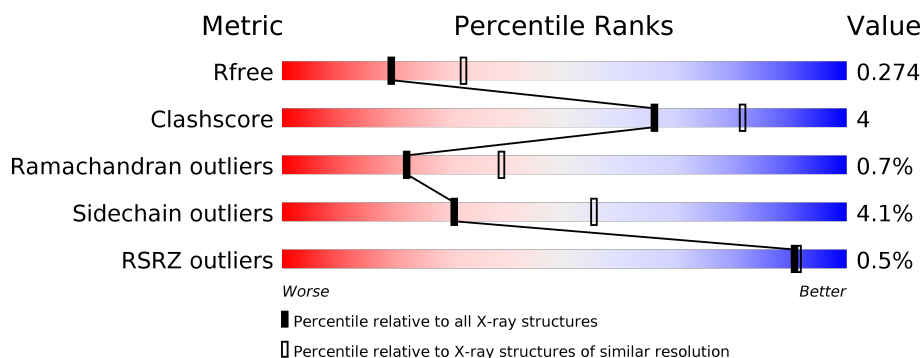
# 1 Overall quality at a glance

The following experimental techniques were used to determine the structure:

## *X-RAY DIFFRACTION*

The reported resolution of this entry is 2.50 Å.

Percentile scores (ranging between 0-100) for global validation metrics of the entry are shown in the following graphic. The table shows the number of entries on which the scores are based.



Metric	Whole archive (#Entries)	Similar resolution (#Entries, resolution range(Å))
$R_{free}$	130704	4661 (2.50-2.50)
Clashscore	141614	5346 (2.50-2.50)
Ramachandran outliers	138981	5231 (2.50-2.50)
Sidechain outliers	138945	5233 (2.50-2.50)
RSRZ outliers	127900	4559 (2.50-2.50)

The table below summarises the geometric issues observed across the polymeric chains and their fit to the electron density. The red, orange, yellow and green segments on the lower bar indicate the fraction of residues that contain outliers for  $\geq 3$ , 2, 1 and 0 types of geometric quality criteria respectively. A grey segment represents the fraction of residues that are not modelled. The numeric value for each fraction is indicated below the corresponding segment, with a dot representing fractions  $\leq 5\%$ . The upper red bar (where present) indicates the fraction of residues that have poor fit to the electron density. The numeric value is given above the bar.

Mol	Chain	Length	Quality of chain
1	A	666	<div> <div style="width: 100%; height: 10px; background: linear-gradient(to right, red 1%, orange 1%, yellow 12%, green 84%, grey 13%);"></div> <div style="display: flex; justify-content: space-between; width: 100%;"> <span>%</span> <span>84%</span> <span>12%</span> <span>• •</span> </div> </div>
1	B	666	<div> <div style="width: 100%; height: 10px; background: linear-gradient(to right, green 88%, yellow 8%, orange 2%, red 1%, grey 1%);"></div> <div style="display: flex; justify-content: space-between; width: 100%;"> <span>88%</span> <span>8%</span> <span>• •</span> </div> </div>

## 2 Entry composition

There are 3 unique types of molecules in this entry. The entry contains 10196 atoms, of which 32 are hydrogens and 0 are deuteriums.

In the tables below, the ZeroOcc column contains the number of atoms modelled with zero occupancy, the AltConf column contains the number of residues with at least one atom in alternate conformation and the Trace column contains the number of residues modelled with at most 2 atoms.

- Molecule 1 is a protein called NON-STRUCTURAL PROTEIN 4A, SERINE PROTEASE NS3.

Mol	Chain	Residues	Atoms					ZeroOcc	AltConf	Trace
1	A	645	Total	C	N	O	S	0	0	0
			4808	3026	834	918	30			
1	B	642	Total	C	N	O	S	0	0	0
			4794	3019	831	914	30			

There are 56 discrepancies between the modelled and reference sequences:

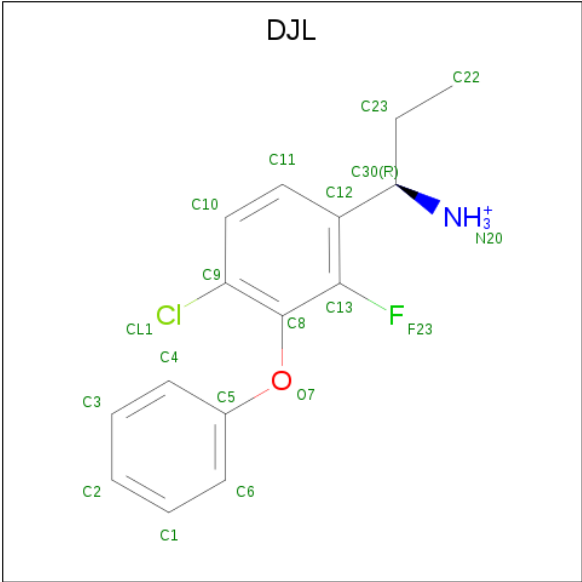
Chain	Residue	Modelled	Actual	Comment	Reference
A	684	MET	-	expression tag	UNP P26663
A	685	GLY	-	expression tag	UNP P26663
A	686	SER	-	expression tag	UNP P26663
A	687	SER	-	expression tag	UNP P26663
A	688	HIS	-	expression tag	UNP P26663
A	689	HIS	-	expression tag	UNP P26663
A	690	HIS	-	expression tag	UNP P26663
A	691	HIS	-	expression tag	UNP P26663
A	692	HIS	-	expression tag	UNP P26663
A	693	HIS	-	expression tag	UNP P26663
A	694	SER	-	expression tag	UNP P26663
A	695	SER	-	expression tag	UNP P26663
A	696	GLY	-	expression tag	UNP P26663
A	697	LEU	-	expression tag	UNP P26663
A	698	VAL	-	expression tag	UNP P26663
A	699	PRO	-	expression tag	UNP P26663
A	700	ARG	-	expression tag	UNP P26663
A	701	GLY	-	expression tag	UNP P26663
A	702	SER	-	expression tag	UNP P26663
A	703	HIS	-	expression tag	UNP P26663
A	704	MET	-	expression tag	UNP P26663
A	718	SER	-	linker	UNP P26663
A	719	GLY	-	linker	UNP P26663
A	720	SER	-	linker	UNP P26663

*Continued on next page...*

*Continued from previous page...*

Chain	Residue	Modelled	Actual	Comment	Reference
A	66	GLY	ALA	conflict	UNP P26663
A	86	GLN	PRO	conflict	UNP P26663
A	87	ALA	LYS	conflict	UNP P26663
A	147	SER	PHE	conflict	UNP P26663
B	684	MET	-	expression tag	UNP P26663
B	685	GLY	-	expression tag	UNP P26663
B	686	SER	-	expression tag	UNP P26663
B	687	SER	-	expression tag	UNP P26663
B	688	HIS	-	expression tag	UNP P26663
B	689	HIS	-	expression tag	UNP P26663
B	690	HIS	-	expression tag	UNP P26663
B	691	HIS	-	expression tag	UNP P26663
B	692	HIS	-	expression tag	UNP P26663
B	693	HIS	-	expression tag	UNP P26663
B	694	SER	-	expression tag	UNP P26663
B	695	SER	-	expression tag	UNP P26663
B	696	GLY	-	expression tag	UNP P26663
B	697	LEU	-	expression tag	UNP P26663
B	698	VAL	-	expression tag	UNP P26663
B	699	PRO	-	expression tag	UNP P26663
B	700	ARG	-	expression tag	UNP P26663
B	701	GLY	-	expression tag	UNP P26663
B	702	SER	-	expression tag	UNP P26663
B	703	HIS	-	expression tag	UNP P26663
B	704	MET	-	expression tag	UNP P26663
B	718	SER	-	linker	UNP P26663
B	719	GLY	-	linker	UNP P26663
B	720	SER	-	linker	UNP P26663
B	66	GLY	ALA	conflict	UNP P26663
B	86	GLN	PRO	conflict	UNP P26663
B	87	ALA	LYS	conflict	UNP P26663
B	147	SER	PHE	conflict	UNP P26663

- Molecule 2 is (1R)-1-(4-chloro-2-fluoro-3-phenoxyphenyl)propan-1-aminium (three-letter code: DJL) (formula: C<sub>15</sub>H<sub>16</sub>ClFNO).



Mol	Chain	Residues	Atoms							ZeroOcc	AltConf
2	A	1	Total	C	Cl	F	H	N	O	0	0
			35	15	1	1	16	1	1		
2	B	1	Total	C	Cl	F	H	N	O	0	0
			35	15	1	1	16	1	1		

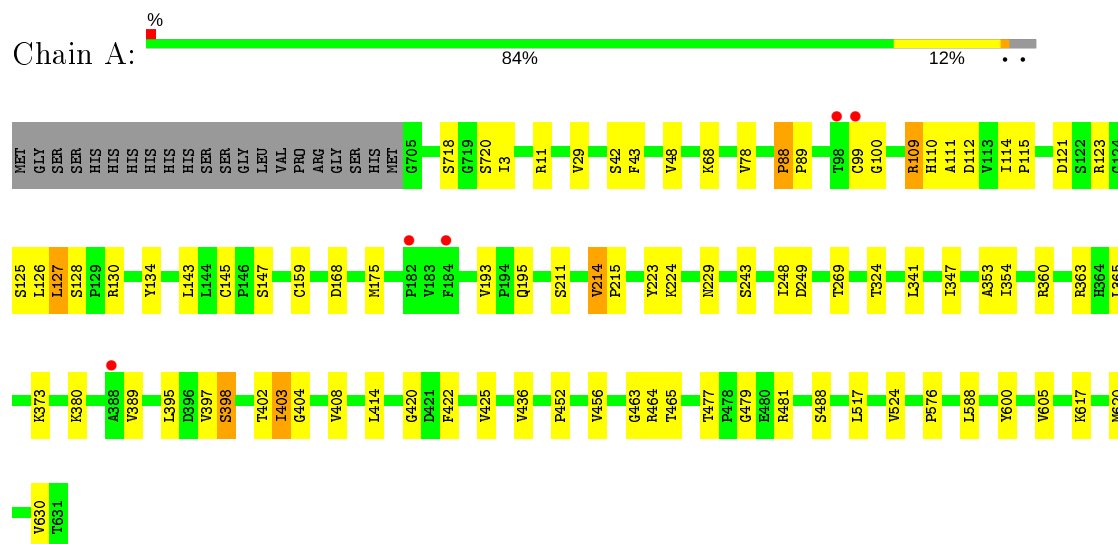
- Molecule 3 is water.

Mol	Chain	Residues	Atoms		ZeroOcc	AltConf
3	A	280	Total	O	0	0
			280	280		
3	B	244	Total	O	0	0
			244	244		

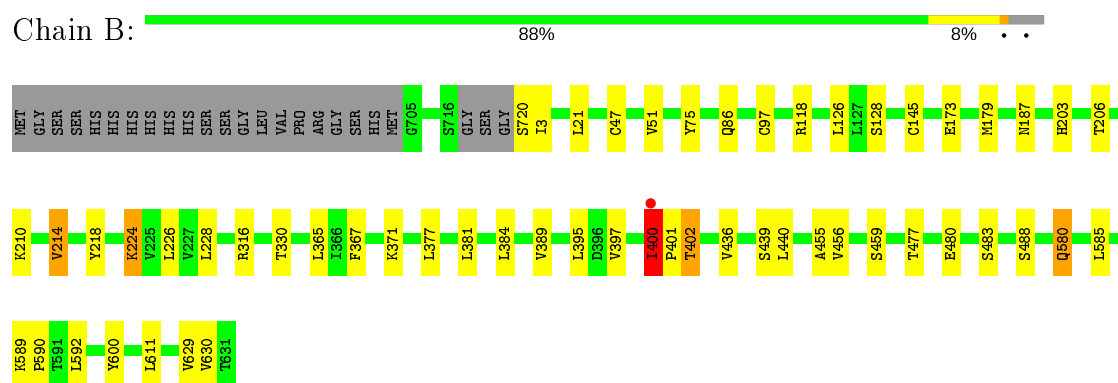
### 3 Residue-property plots [i](#)

These plots are drawn for all protein, RNA and DNA chains in the entry. The first graphic for a chain summarises the proportions of the various outlier classes displayed in the second graphic. The second graphic shows the sequence view annotated by issues in geometry and electron density. Residues are color-coded according to the number of geometric quality criteria for which they contain at least one outlier: green = 0, yellow = 1, orange = 2 and red = 3 or more. A red dot above a residue indicates a poor fit to the electron density ( $RSRZ > 2$ ). Stretches of 2 or more consecutive residues without any outlier are shown as a green connector. Residues present in the sample, but not in the model, are shown in grey.

#### • Molecule 1: NON-STRUCTURAL PROTEIN 4A, SERINE PROTEASE NS3



#### • Molecule 1: NON-STRUCTURAL PROTEIN 4A, SERINE PROTEASE NS3



## 4 Data and refinement statistics

Property	Value	Source
Space group	P 21 21 21	Depositor
Cell constants a, b, c, $\alpha$ , $\beta$ , $\gamma$	91.13Å 110.03Å 142.50Å 90.00° 90.00° 90.00°	Depositor
Resolution (Å)	87.09 – 2.50 87.09 – 2.50	Depositor EDS
% Data completeness (in resolution range)	98.3 (87.09-2.50) 98.3 (87.09-2.50)	Depositor EDS
$R_{merge}$	0.09	Depositor
$R_{sym}$	(Not available)	Depositor
$\langle I/\sigma(I) \rangle$ <sup>1</sup>	1.85 (at 2.48Å)	Xtriage
Refinement program	REFMAC 5.7.0025	Depositor
R, $R_{free}$	0.182 , 0.274 0.188 , 0.274	Depositor DCC
$R_{free}$ test set	2537 reflections (5.12%)	wwPDB-VP
Wilson B-factor (Å <sup>2</sup> )	46.0	Xtriage
Anisotropy	0.119	Xtriage
Bulk solvent $k_{sol}$ (e/Å <sup>3</sup> ), $B_{sol}$ (Å <sup>2</sup> )	0.31 , 44.7	EDS
L-test for twinning <sup>2</sup>	$\langle  L  \rangle = 0.48$ , $\langle L^2 \rangle = 0.32$	Xtriage
Estimated twinning fraction	No twinning to report.	Xtriage
$F_o, F_c$ correlation	0.95	EDS
Total number of atoms	10196	wwPDB-VP
Average B, all atoms (Å <sup>2</sup> )	49.0	wwPDB-VP

Xtriage's analysis on translational NCS is as follows: *The largest off-origin peak in the Patterson function is 3.88% of the height of the origin peak. No significant pseudotranslation is detected.*

<sup>1</sup>Intensities estimated from amplitudes.

<sup>2</sup>Theoretical values of  $\langle |L| \rangle$ ,  $\langle L^2 \rangle$  for acentric reflections are 0.5, 0.333 respectively for untwinned datasets, and 0.375, 0.2 for perfectly twinned datasets.

## 5 Model quality [i](#)

### 5.1 Standard geometry [i](#)

Bond lengths and bond angles in the following residue types are not validated in this section: DJL

The Z score for a bond length (or angle) is the number of standard deviations the observed value is removed from the expected value. A bond length (or angle) with  $|Z| > 5$  is considered an outlier worth inspection. RMSZ is the root-mean-square of all Z scores of the bond lengths (or angles).

Mol	Chain	Bond lengths		Bond angles	
		RMSZ	$\# Z  > 5$	RMSZ	$\# Z  > 5$
1	A	0.56	1/4916 (0.0%)	0.66	0/6711
1	B	0.55	0/4901	0.66	2/6690 (0.0%)
All	All	0.56	1/9817 (0.0%)	0.66	2/13401 (0.0%)

All (1) bond length outliers are listed below:

Mol	Chain	Res	Type	Atoms	Z	Observed(Å)	Ideal(Å)
1	A	159	CYS	CB-SG	-5.63	1.72	1.81

All (2) bond angle outliers are listed below:

Mol	Chain	Res	Type	Atoms	Z	Observed(°)	Ideal(°)
1	B	400	ILE	C-N-CD	-6.00	107.41	120.60
1	B	400	ILE	C-N-CA	5.16	143.69	122.00

There are no chirality outliers.

There are no planarity outliers.

### 5.2 Too-close contacts [i](#)

In the following table, the Non-H and H(model) columns list the number of non-hydrogen atoms and hydrogen atoms in the chain respectively. The H(added) column lists the number of hydrogen atoms added and optimized by MolProbity. The Clashes column lists the number of clashes within the asymmetric unit, whereas Symm-Clashes lists symmetry related clashes.

Mol	Chain	Non-H	H(model)	H(added)	Clashes	Symm-Clashes
1	A	4808	0	4783	43	0
1	B	4794	0	4771	32	0
2	A	19	16	16	3	0

*Continued on next page...*



*Continued from previous page...*

Mol	Chain	Non-H	H(model)	H(added)	Clashes	Symm-Clashes
2	B	19	16	16	1	0
3	A	280	0	0	1	0
3	B	244	0	0	1	0
All	All	10164	32	9586	75	0

The all-atom clashscore is defined as the number of clashes found per 1000 atoms (including hydrogen atoms). The all-atom clashscore for this structure is 4.

All (75) close contacts within the same asymmetric unit are listed below, sorted by their clash magnitude.

Atom-1	Atom-2	Interatomic distance (Å)	Clash overlap (Å)
1:B:97:CYS:HG	1:B:145:CYS:HG	0.89	0.89
1:B:400:ILE:HG21	1:B:402:THR:HG23	1.56	0.87
1:B:400:ILE:HB	1:B:401:PRO:HA	1.67	0.76
1:B:401:PRO:O	1:B:402:THR:OG1	2.02	0.76
1:B:400:ILE:HG22	1:B:402:THR:N	2.02	0.74
1:B:330:THR:HG22	1:B:459:SER:OG	1.88	0.72
1:B:436:VAL:HG11	1:B:488:SER:HB3	1.77	0.66
1:B:397:VAL:O	1:B:400:ILE:HG12	1.98	0.63
1:B:97:CYS:HG	1:B:145:CYS:CB	2.13	0.61
1:A:477:THR:HG22	1:A:479:GLY:H	1.67	0.59
1:A:436:VAL:HG11	1:A:488:SER:HB3	1.83	0.59
1:A:123:ARG:NE	1:A:168:ASP:OD1	2.35	0.59
1:B:400:ILE:HB	1:B:401:PRO:CA	2.31	0.58
1:A:720:SER:HA	1:A:3:ILE:N	2.19	0.56
1:B:400:ILE:CG2	1:B:402:THR:HG23	2.32	0.56
1:A:420:GLY:O	1:A:464:ARG:NH1	2.40	0.55
1:A:365:LEU:HD22	1:A:422:PHE:CE1	2.43	0.54
1:B:455:ALA:HB3	1:B:483:SER:HB3	1.90	0.54
1:A:403:ILE:HG22	1:A:404:GLY:H	1.73	0.54
1:A:145:CYS:SG	1:A:147:SER:OG	2.66	0.53
1:A:112:ASP:OD2	1:A:134:TYR:OH	2.27	0.52
1:A:397:VAL:O	1:A:398:SER:CB	2.57	0.52
1:A:363:ARG:NH1	1:A:404:GLY:O	2.43	0.51
1:A:29:VAL:HG11	1:A:88:PRO:HB2	1.93	0.51
1:A:243:SER:HA	1:A:248:ILE:O	2.11	0.51
1:B:187:ASN:O	1:B:203:HIS:N	2.35	0.51
1:B:436:VAL:CG1	1:B:488:SER:HB3	2.41	0.50
1:A:397:VAL:O	1:A:398:SER:OG	2.27	0.48
1:B:210:LYS:HA	1:B:214:VAL:CG1	2.44	0.48
1:A:114:ILE:HD12	1:A:130:ARG:NH2	2.27	0.48

*Continued on next page...*

*Continued from previous page...*

Atom-1	Atom-2	Interatomic distance (Å)	Clash overlap (Å)
1:A:341:LEU:HD12	1:A:353:ALA:O	2.14	0.47
1:A:229:ASN:O	1:A:269:THR:HA	2.14	0.47
1:A:720:SER:CA	1:A:3:ILE:N	2.77	0.47
1:A:720:SER:C	1:A:3:ILE:N	2.67	0.47
1:A:214:VAL:N	1:A:215:PRO:HD2	2.30	0.47
1:B:214:VAL:HG23	1:B:218:TYR:CE2	2.49	0.46
1:B:47:CYS:HA	1:B:51:VAL:O	2.15	0.46
1:B:630:VAL:HG11	2:B:1721:DJL:H4	1.98	0.46
1:A:452:PRO:HD2	1:A:481:ARG:CZ	2.46	0.46
1:A:630:VAL:HG11	2:A:1721:DJL:H6	1.98	0.46
1:A:115:PRO:HB2	1:A:127:LEU:HD22	1.98	0.45
1:A:414:LEU:O	1:A:414:LEU:HD13	2.15	0.45
1:B:456:VAL:HG23	1:B:483:SER:HB2	1.98	0.45
1:B:377:LEU:O	1:B:381:LEU:HG	2.18	0.44
1:B:400:ILE:CG2	1:B:402:THR:N	2.77	0.44
1:B:580:GLN:HA	1:B:580:GLN:HE21	1.82	0.44
1:A:425:VAL:HG23	1:A:465:THR:HB	1.99	0.43
1:A:143:LEU:HD12	1:A:143:LEU:N	2.34	0.43
1:A:193:VAL:HG21	1:A:223:TYR:CE2	2.54	0.42
1:B:400:ILE:HG22	1:B:401:PRO:C	2.38	0.42
1:A:214:VAL:HG22	1:A:215:PRO:HD3	2.00	0.42
1:A:110:HIS:O	1:A:111:ALA:HB3	2.20	0.42
1:A:617:LYS:HA	1:A:620:MET:HE2	2.02	0.42
1:A:88:PRO:CB	1:A:89:PRO:CD	2.98	0.42
1:A:48:VAL:HB	1:A:175:MET:HE1	2.02	0.41
1:A:524:VAL:HG21	2:A:1721:DJL:C10	2.50	0.41
1:B:75:TYR:CE1	1:B:179:MET:HA	2.55	0.41
1:A:403:ILE:HG22	1:A:404:GLY:N	2.33	0.41
1:B:226:LEU:HD21	1:B:228:LEU:HD21	2.03	0.41
1:B:720:SER:O	1:B:3:ILE:N	2.54	0.41
1:B:439:SER:O	1:B:440:LEU:C	2.59	0.41
1:B:224:LYS:NZ	3:B:2087:HOH:O	2.54	0.41
1:B:365:LEU:HD21	1:B:367:PHE:CZ	2.56	0.41
1:A:78:VAL:O	2:A:1721:DJL:H10	2.21	0.41
1:A:347:ILE:HB	1:A:354:ILE:HB	2.02	0.41
1:A:43:PHE:CD1	1:A:43:PHE:N	2.88	0.41
1:B:589:LYS:N	1:B:590:PRO:CD	2.84	0.41
1:A:88:PRO:CB	1:A:89:PRO:HD2	2.51	0.41
1:B:400:ILE:CG2	1:B:401:PRO:C	2.90	0.41
1:A:42:SER:OG	1:A:109:ARG:NH2	2.51	0.41
1:A:576:PRO:HB3	1:A:605:VAL:HG13	2.03	0.41

*Continued on next page...*

*Continued from previous page...*

Atom-1	Atom-2	Interatomic distance (Å)	Clash overlap (Å)
1:A:402:THR:HG23	1:A:402:THR:O	2.21	0.40
1:A:324:THR:HB	1:A:456:VAL:HG22	2.03	0.40
1:A:68:LYS:NZ	3:A:2016:HOH:O	2.53	0.40
1:B:400:ILE:CB	1:B:401:PRO:CA	2.99	0.40

There are no symmetry-related clashes.

## 5.3 Torsion angles [i](#)

### 5.3.1 Protein backbone [i](#)

In the following table, the Percentiles column shows the percent Ramachandran outliers of the chain as a percentile score with respect to all X-ray entries followed by that with respect to entries of similar resolution.

The Analysed column shows the number of residues for which the backbone conformation was analysed, and the total number of residues.

Mol	Chain	Analysed	Favoured	Allowed	Outliers	Percentiles	
1	A	641/666 (96%)	613 (96%)	22 (3%)	6 (1%)	17	31
1	B	637/666 (96%)	622 (98%)	12 (2%)	3 (0%)	29	48
All	All	1278/1332 (96%)	1235 (97%)	34 (3%)	9 (1%)	22	39

All (9) Ramachandran outliers are listed below:

Mol	Chain	Res	Type
1	A	403	ILE
1	B	400	ILE
1	A	99	CYS
1	A	398	SER
1	B	402	THR
1	A	88	PRO
1	B	480	GLU
1	A	100	GLY
1	A	463	GLY

### 5.3.2 Protein sidechains ⓘ

In the following table, the Percentiles column shows the percent sidechain outliers of the chain as a percentile score with respect to all X-ray entries followed by that with respect to entries of similar resolution.

The Analysed column shows the number of residues for which the sidechain conformation was analysed, and the total number of residues.

Mol	Chain	Analysed	Rotameric	Outliers	Percentiles	
1	A	526/544 (97%)	504 (96%)	22 (4%)	30	54
1	B	525/544 (96%)	504 (96%)	21 (4%)	31	56
All	All	1051/1088 (97%)	1008 (96%)	43 (4%)	30	55

All (43) residues with a non-rotameric sidechain are listed below:

Mol	Chain	Res	Type
1	A	718	SER
1	A	11	ARG
1	A	109	ARG
1	A	121	ASP
1	A	125	SER
1	A	126	LEU
1	A	127	LEU
1	A	128	SER
1	A	195	GLN
1	A	211	SER
1	A	214	VAL
1	A	224	LYS
1	A	249	ASP
1	A	360	ARG
1	A	373	LYS
1	A	380	LYS
1	A	389	VAL
1	A	395	LEU
1	A	408	VAL
1	A	517	LEU
1	A	588	LEU
1	A	600	TYR
1	B	21	LEU
1	B	86	GLN
1	B	118	ARG
1	B	126	LEU
1	B	128	SER

*Continued on next page...*

*Continued from previous page...*

Mol	Chain	Res	Type
1	B	173	GLU
1	B	206	THR
1	B	214	VAL
1	B	224	LYS
1	B	316	ARG
1	B	371	LYS
1	B	384	LEU
1	B	389	VAL
1	B	395	LEU
1	B	477	THR
1	B	580	GLN
1	B	585	LEU
1	B	592	LEU
1	B	600	TYR
1	B	611	LEU
1	B	629	VAL

Some sidechains can be flipped to improve hydrogen bonding and reduce clashes. All (7) such sidechains are listed below:

Mol	Chain	Res	Type
1	A	251	ASN
1	A	606	GLN
1	B	27	ASN
1	B	293	HIS
1	B	460	GLN
1	B	526	GLN
1	B	580	GLN

### 5.3.3 RNA [i](#)

There are no RNA molecules in this entry.

## 5.4 Non-standard residues in protein, DNA, RNA chains [i](#)

There are no non-standard protein/DNA/RNA residues in this entry.

## 5.5 Carbohydrates [i](#)

There are no carbohydrates in this entry.

## 5.6 Ligand geometry

2 ligands are modelled in this entry.

In the following table, the Counts columns list the number of bonds (or angles) for which Mogul statistics could be retrieved, the number of bonds (or angles) that are observed in the model and the number of bonds (or angles) that are defined in the Chemical Component Dictionary. The Link column lists molecule types, if any, to which the group is linked. The Z score for a bond length (or angle) is the number of standard deviations the observed value is removed from the expected value. A bond length (or angle) with  $|Z| > 2$  is considered an outlier worth inspection. RMSZ is the root-mean-square of all Z scores of the bond lengths (or angles).

Mol	Type	Chain	Res	Link	Bond lengths			Bond angles		
					Counts	RMSZ	# Z  > 2	Counts	RMSZ	# Z  > 2
2	DJL	B	1721	-	20,20,20	0.69	1 (5%)	23,27,27	1.09	3 (13%)
2	DJL	A	1721	-	20,20,20	0.60	1 (5%)	23,27,27	1.24	3 (13%)

In the following table, the Chirals column lists the number of chiral outliers, the number of chiral centers analysed, the number of these observed in the model and the number defined in the Chemical Component Dictionary. Similar counts are reported in the Torsion and Rings columns. '-' means no outliers of that kind were identified.

Mol	Type	Chain	Res	Link	Chirals	Torsions	Rings
2	DJL	B	1721	-	-	0/10/10/10	0/2/2/2
2	DJL	A	1721	-	-	0/10/10/10	0/2/2/2

All (2) bond length outliers are listed below:

Mol	Chain	Res	Type	Atoms	Z	Observed(Å)	Ideal(Å)
2	B	1721	DJL	C12-C13	2.72	1.41	1.38
2	A	1721	DJL	C12-C13	2.21	1.41	1.38

All (6) bond angle outliers are listed below:

Mol	Chain	Res	Type	Atoms	Z	Observed(°)	Ideal(°)
2	A	1721	DJL	O7-C8-C9	3.84	124.97	120.51
2	B	1721	DJL	O7-C8-C9	2.74	123.69	120.51
2	B	1721	DJL	C5-O7-C8	2.09	121.85	118.48
2	A	1721	DJL	O7-C5-C4	2.08	126.69	119.38
2	B	1721	DJL	O7-C5-C6	2.06	126.62	119.38
2	A	1721	DJL	C8-C9-CL1	2.03	121.06	118.41

There are no chirality outliers.

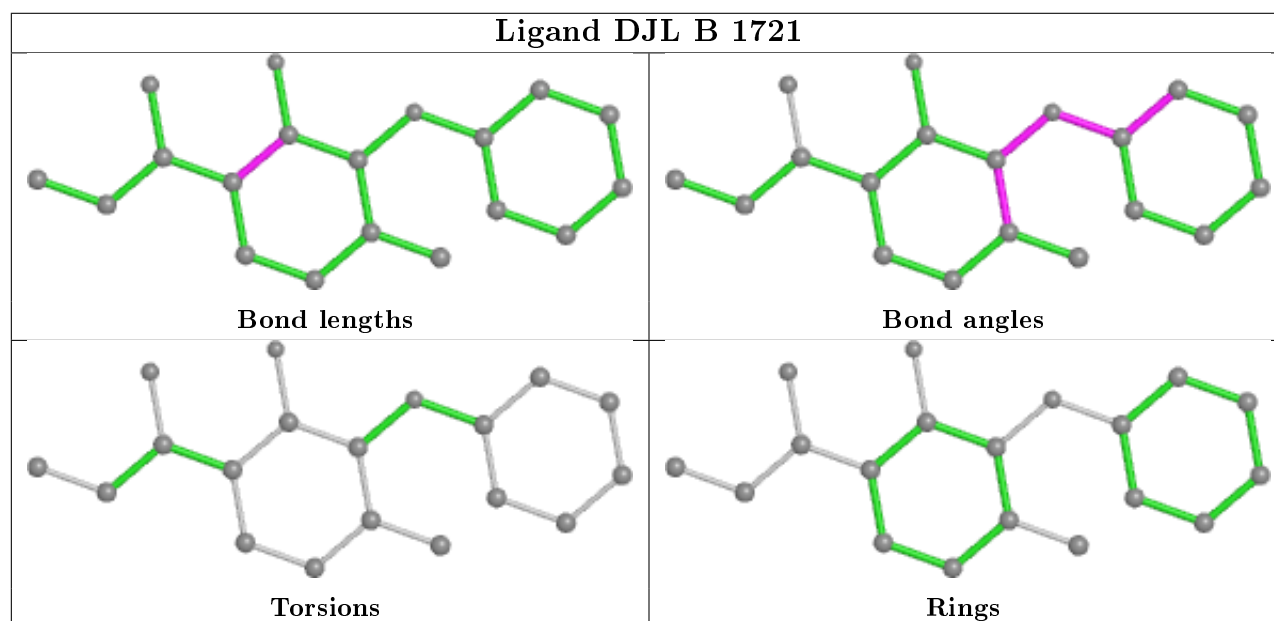
There are no torsion outliers.

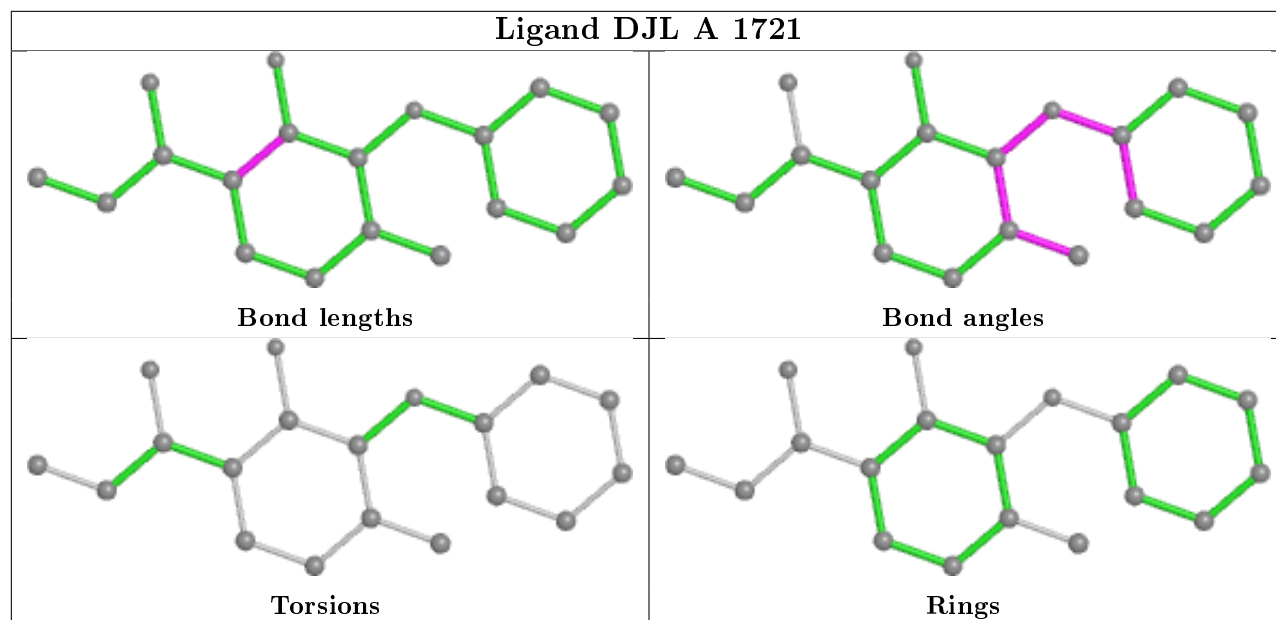
There are no ring outliers.

2 monomers are involved in 4 short contacts:

Mol	Chain	Res	Type	Clashes	Symm-Clashes
2	B	1721	DJL	1	0
2	A	1721	DJL	3	0

The following is a two-dimensional graphical depiction of Mogul quality analysis of bond lengths, bond angles, torsion angles, and ring geometry for all instances of the Ligand of Interest. In addition, ligands with molecular weight > 250 and outliers as shown on the validation Tables will also be included. For torsion angles, if less than 5% of the Mogul distribution of torsion angles is within 10 degrees of the torsion angle in question, then that torsion angle is considered an outlier. Any bond that is central to one or more torsion angles identified as an outlier by Mogul will be highlighted in the graph. For rings, the root-mean-square deviation (RMSD) between the ring in question and similar rings identified by Mogul is calculated over all ring torsion angles. If the average RMSD is greater than 60 degrees and the minimal RMSD between the ring in question and any Mogul-identified rings is also greater than 60 degrees, then that ring is considered an outlier. The outliers are highlighted in purple. The color gray indicates Mogul did not find sufficient equivalents in the CSD to analyse the geometry.





## 5.7 Other polymers [i](#)

There are no such residues in this entry.

## 5.8 Polymer linkage issues [i](#)

The following chains have linkage breaks:

Mol	Chain	Number of breaks
1	B	1
1	A	1

All chain breaks are listed below:

Model	Chain	Residue-1	Atom-1	Residue-2	Atom-2	Distance (Å)
1	B	720:SER	C	3:ILE	N	3.44
1	A	720:SER	C	3:ILE	N	2.67



## 6 Fit of model and data [i](#)

### 6.1 Protein, DNA and RNA chains [i](#)

In the following table, the column labelled ‘#RSRZ> 2’ contains the number (and percentage) of RSRZ outliers, followed by percent RSRZ outliers for the chain as percentile scores relative to all X-ray entries and entries of similar resolution. The OWAB column contains the minimum, median, 95<sup>th</sup> percentile and maximum values of the occupancy-weighted average B-factor per residue. The column labelled ‘Q< 0.9’ lists the number of (and percentage) of residues with an average occupancy less than 0.9.

Mol	Chain	Analysed	<RSRZ>	#RSRZ>2		OWAB(Å <sup>2</sup> )	Q<0.9
1	A	645/666 (96%)	-0.16	5 (0%)	86 87	25, 46, 83, 132	0
1	B	642/666 (96%)	-0.24	1 (0%)	95 95	28, 46, 74, 113	0
All	All	1287/1332 (96%)	-0.20	6 (0%)	91 91	25, 46, 79, 132	0

All (6) RSRZ outliers are listed below:

Mol	Chain	Res	Type	RSRZ
1	A	98	THR	3.9
1	A	388	ALA	2.6
1	B	400	ILE	2.3
1	A	99	CYS	2.1
1	A	182	PRO	2.0
1	A	184	PHE	2.0

### 6.2 Non-standard residues in protein, DNA, RNA chains [i](#)

There are no non-standard protein/DNA/RNA residues in this entry.

### 6.3 Carbohydrates [i](#)

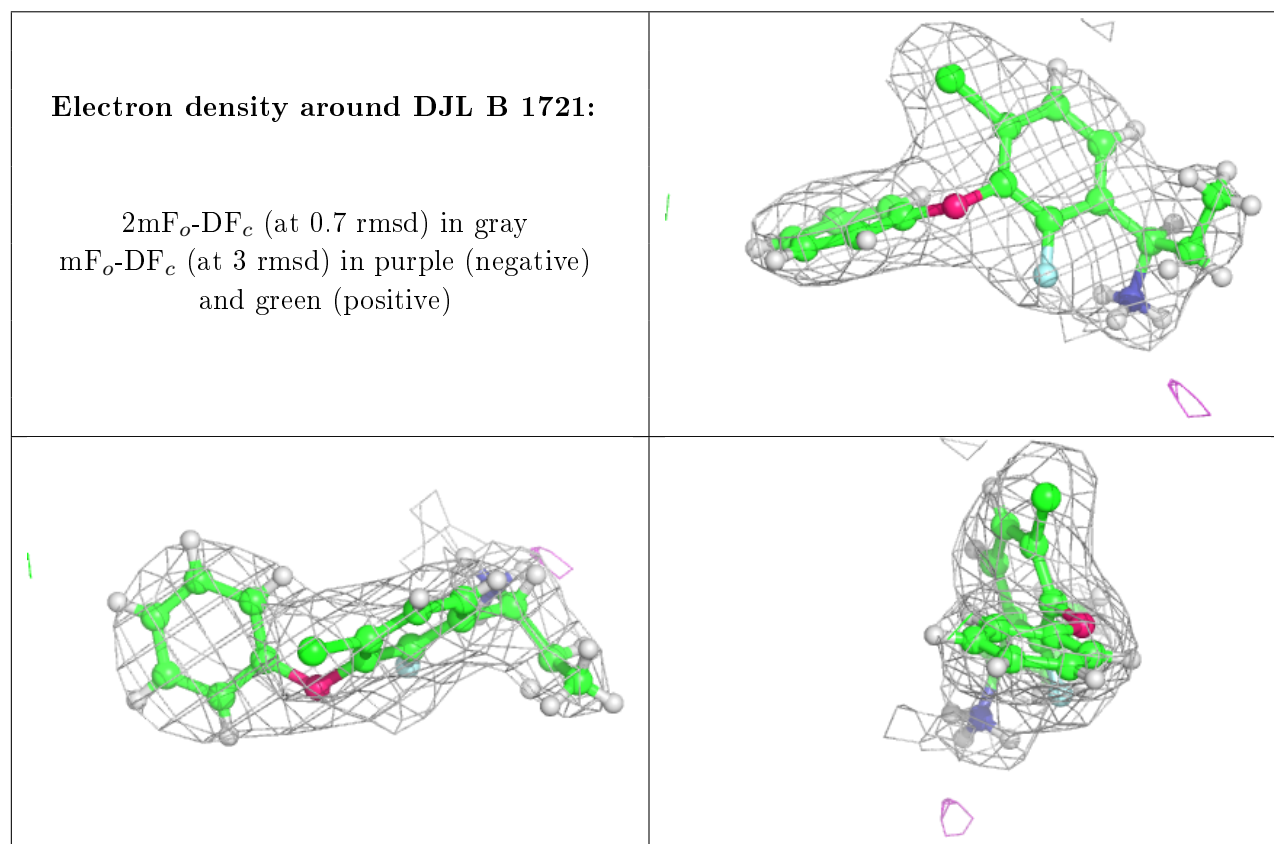
There are no carbohydrates in this entry.

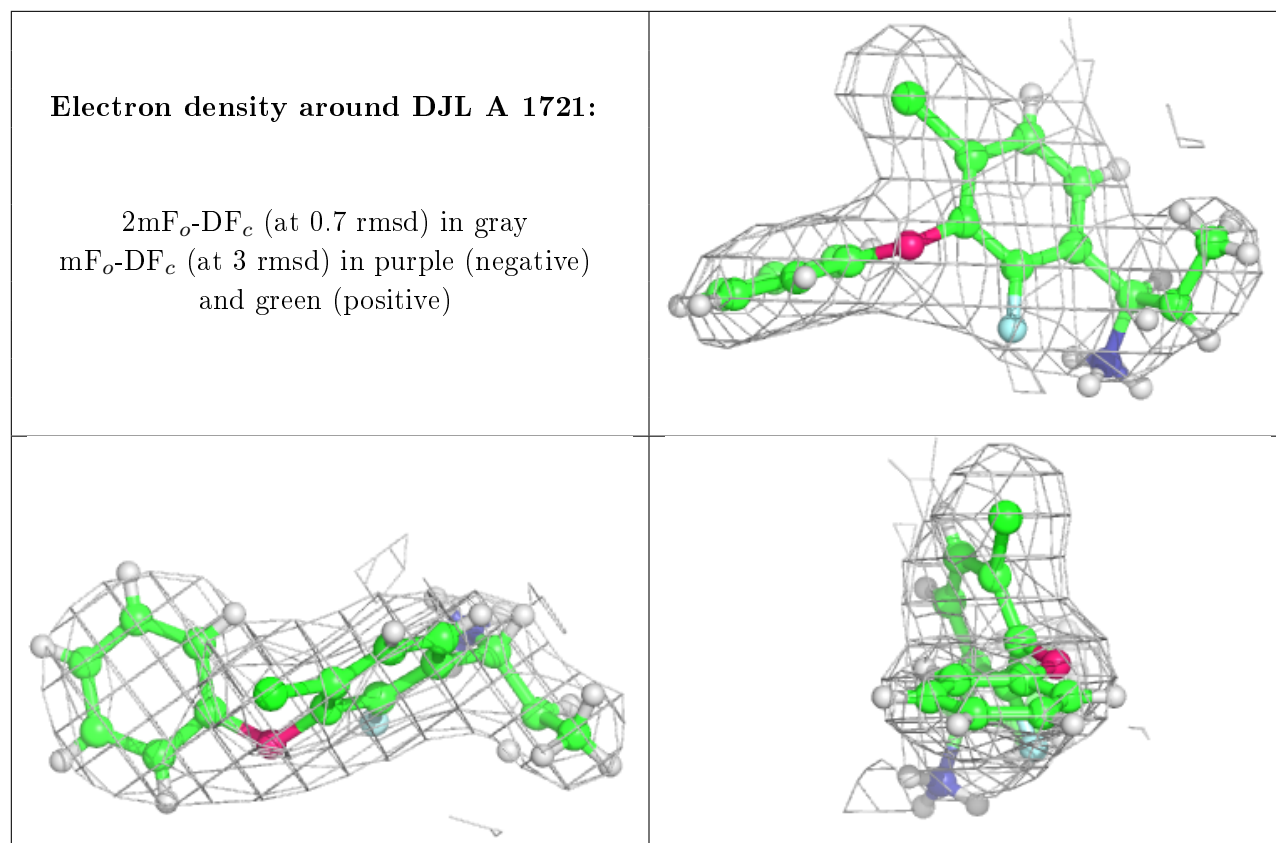
### 6.4 Ligands [i](#)

In the following table, the Atoms column lists the number of modelled atoms in the group and the number defined in the chemical component dictionary. The B-factors column lists the minimum, median, 95<sup>th</sup> percentile and maximum values of B factors of atoms in the group. The column labelled ‘Q< 0.9’ lists the number of atoms with occupancy less than 0.9.

Mol	Type	Chain	Res	Atoms	RSCC	RSR	B-factors( $\text{\AA}^2$ )	Q<0.9
2	DJL	B	1721	19/19	0.97	0.12	24,31,35,46	35
2	DJL	A	1721	19/19	0.97	0.17	20,26,38,40	35

The following is a graphical depiction of the model fit to experimental electron density of all instances of the Ligand of Interest. In addition, ligands with molecular weight > 250 and outliers as shown on the geometry validation Tables will also be included. Each fit is shown from different orientation to approximate a three-dimensional view.





## 6.5 Other polymers [i](#)

There are no such residues in this entry.