



# wwPDB X-ray Structure Validation Summary Report ⓘ

May 16, 2020 – 04:56 am BST

PDB ID : 6B82  
Title : Zebra Fish CYP-450 17A1 Mutant Abiraterone Complex  
Authors : Pallan, P.S.; Egli, M.  
Deposited on : 2017-10-05  
Resolution : 3.03 Å(reported)

This is a wwPDB X-ray Structure Validation Summary Report for a publicly released PDB entry.

We welcome your comments at [validation@mail.wwpdb.org](mailto:validation@mail.wwpdb.org)

A user guide is available at

<https://www.wwpdb.org/validation/2017/XrayValidationReportHelp>

with specific help available everywhere you see the ⓘ symbol.

---

The following versions of software and data (see [references ⓘ](#)) were used in the production of this report:

MolProbity : 4.02b-467  
Mogul : 1.8.5 (274361), CSD as541be (2020)  
Xtriage (Phenix) : 1.13  
EDS : 2.11  
buster-report : 1.1.7 (2018)  
Percentile statistics : 20191225.v01 (using entries in the PDB archive December 25th 2019)  
Refmac : 5.8.0158  
CCP4 : 7.0.044 (Gargrove)  
Ideal geometry (proteins) : Engh & Huber (2001)  
Ideal geometry (DNA, RNA) : Parkinson et al. (1996)  
Validation Pipeline (wwPDB-VP) : 2.11

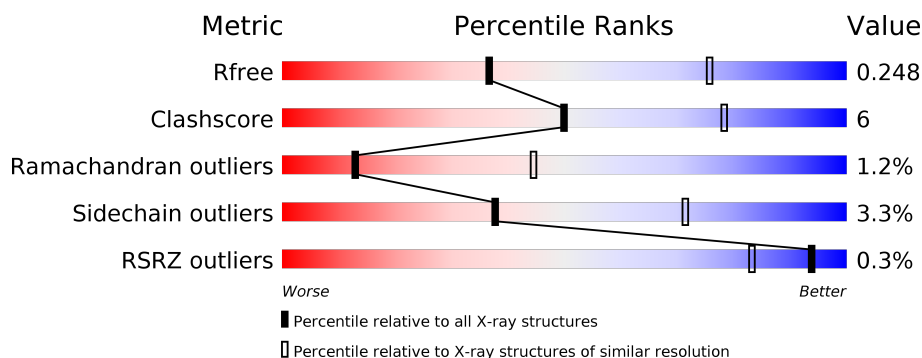
# 1 Overall quality at a glance ⓘ

The following experimental techniques were used to determine the structure:

## *X-RAY DIFFRACTION*

The reported resolution of this entry is 3.03 Å.

Percentile scores (ranging between 0-100) for global validation metrics of the entry are shown in the following graphic. The table shows the number of entries on which the scores are based.



Metric	Whole archive (#Entries)	Similar resolution (#Entries, resolution range(Å))
$R_{free}$	130704	2752 (3.08-3.00)
Clashscore	141614	3096 (3.08-3.00)
Ramachandran outliers	138981	2986 (3.08-3.00)
Sidechain outliers	138945	2988 (3.08-3.00)
RSRZ outliers	127900	2636 (3.08-3.00)

The table below summarises the geometric issues observed across the polymeric chains and their fit to the electron density. The red, orange, yellow and green segments on the lower bar indicate the fraction of residues that contain outliers for  $\geq 3$ , 2, 1 and 0 types of geometric quality criteria respectively. A grey segment represents the fraction of residues that are not modelled. The numeric value for each fraction is indicated below the corresponding segment, with a dot representing fractions  $\leq 5\%$ . The upper red bar (where present) indicates the fraction of residues that have poor fit to the electron density. The numeric value is given above the bar.

Mol	Chain	Length	Quality of chain
1	A	509	
1	B	509	

## 2 Entry composition

There are 6 unique types of molecules in this entry. The entry contains 7579 atoms, of which 0 are hydrogens and 0 are deuteriums.

In the tables below, the ZeroOcc column contains the number of atoms modelled with zero occupancy, the AltConf column contains the number of residues with at least one atom in alternate conformation and the Trace column contains the number of residues modelled with at most 2 atoms.

- Molecule 1 is a protein called Cytochrome P450, family 17, subfamily A, polypeptide 1.

Mol	Chain	Residues	Atoms					ZeroOcc	AltConf	Trace
1	A	465	Total	C	N	O	S	41	0	0
			3678	2342	637	677	22			
1	B	470	Total	C	N	O	S	46	0	0
			3712	2360	645	685	22			

There are 42 discrepancies between the modelled and reference sequences:

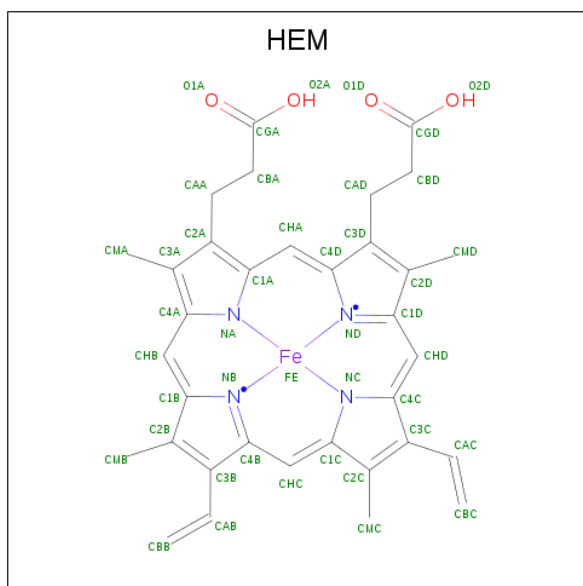
Chain	Residue	Modelled	Actual	Comment	Reference
A	17	MET	-	initiating methionine	UNP A2ATX9
A	18	ALA	-	expression tag	UNP A2ATX9
A	19	LYS	-	expression tag	UNP A2ATX9
A	20	LYS	-	expression tag	UNP A2ATX9
A	21	THR	-	expression tag	UNP A2ATX9
A	22	SER	-	expression tag	UNP A2ATX9
A	23	SER	-	expression tag	UNP A2ATX9
A	24	LYS	-	expression tag	UNP A2ATX9
A	25	GLY	-	expression tag	UNP A2ATX9
A	26	LYS	-	expression tag	UNP A2ATX9
A	309	GLU	ASP	engineered mutation	UNP A2ATX9
A	321	THR	VAL	engineered mutation	UNP A2ATX9
A	369	CYS	ARG	engineered mutation	UNP A2ATX9
A	372	MET	LEU	engineered mutation	UNP A2ATX9
A	407	MET	LEU	engineered mutation	UNP A2ATX9
A	520	HIS	-	expression tag	UNP A2ATX9
A	521	HIS	-	expression tag	UNP A2ATX9
A	522	HIS	-	expression tag	UNP A2ATX9
A	523	HIS	-	expression tag	UNP A2ATX9
A	524	HIS	-	expression tag	UNP A2ATX9
A	525	HIS	-	expression tag	UNP A2ATX9
B	17	MET	-	initiating methionine	UNP A2ATX9
B	18	ALA	-	expression tag	UNP A2ATX9
B	19	LYS	-	expression tag	UNP A2ATX9
B	20	LYS	-	expression tag	UNP A2ATX9

*Continued on next page...*

Continued from previous page...

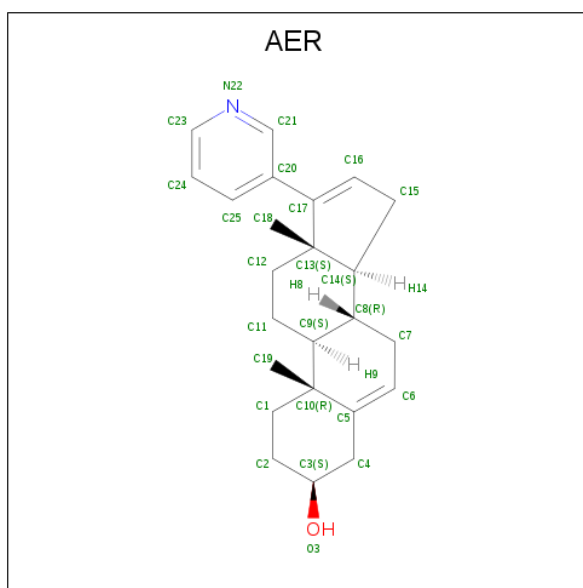
Chain	Residue	Modelled	Actual	Comment	Reference
B	21	THR	-	expression tag	UNP A2ATX9
B	22	SER	-	expression tag	UNP A2ATX9
B	23	SER	-	expression tag	UNP A2ATX9
B	24	LYS	-	expression tag	UNP A2ATX9
B	25	GLY	-	expression tag	UNP A2ATX9
B	26	LYS	-	expression tag	UNP A2ATX9
B	309	GLU	ASP	engineered mutation	UNP A2ATX9
B	321	THR	VAL	engineered mutation	UNP A2ATX9
B	369	CYS	ARG	engineered mutation	UNP A2ATX9
B	372	MET	LEU	engineered mutation	UNP A2ATX9
B	407	MET	LEU	engineered mutation	UNP A2ATX9
B	520	HIS	-	expression tag	UNP A2ATX9
B	521	HIS	-	expression tag	UNP A2ATX9
B	522	HIS	-	expression tag	UNP A2ATX9
B	523	HIS	-	expression tag	UNP A2ATX9
B	524	HIS	-	expression tag	UNP A2ATX9
B	525	HIS	-	expression tag	UNP A2ATX9

- Molecule 2 is PROTOPORPHYRIN IX CONTAINING FE (three-letter code: HEM) (formula:  $C_{34}H_{32}FeN_4O_4$ ).



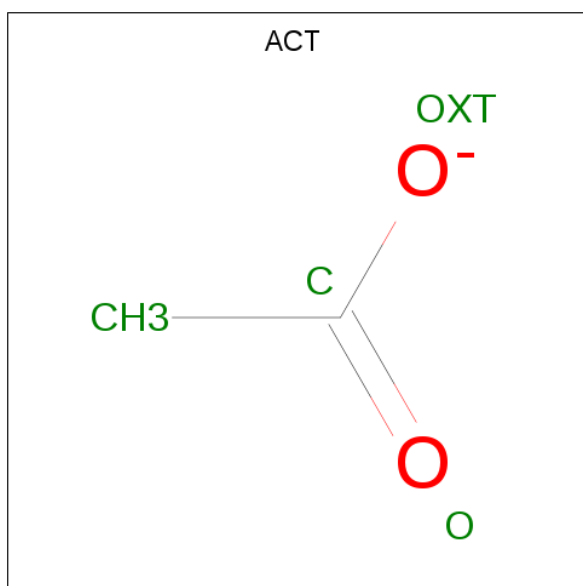
Mol	Chain	Residues	Atoms					ZeroOcc	AltConf
2	A	1	Total	C	Fe	N	O	0	0
			43	34	1	4	4		
2	B	1	Total	C	Fe	N	O	0	0
			43	34	1	4	4		

- Molecule 3 is Abiraterone (three-letter code: AER) (formula:  $C_{24}H_{31}NO$ ).



Mol	Chain	Residues	Atoms				ZeroOcc	AltConf
3	A	1	Total	C	N	O	0	0
			26	24	1	1		
3	B	1	Total	C	N	O	0	0
			26	24	1	1		

- Molecule 4 is ACETATE ION (three-letter code: ACT) (formula:  $C_2H_3O_2$ ).



Mol	Chain	Residues	Atoms			ZeroOcc	AltConf
4	A	1	Total	C	O	0	0
			4	2	2		

*Continued on next page...*

*Continued from previous page...*

Mol	Chain	Residues	Atoms			ZeroOcc	AltConf
4	B	1	Total	C	O	0	0
			4	2	2		
4	B	1	Total	C	O	0	0
			4	2	2		
4	B	1	Total	C	O	0	0
			4	2	2		

- Molecule 5 is CHLORIDE ION (three-letter code: CL) (formula: Cl).

Mol	Chain	Residues	Atoms		ZeroOcc	AltConf
5	B	1	Total	Cl	0	0
			1	1		

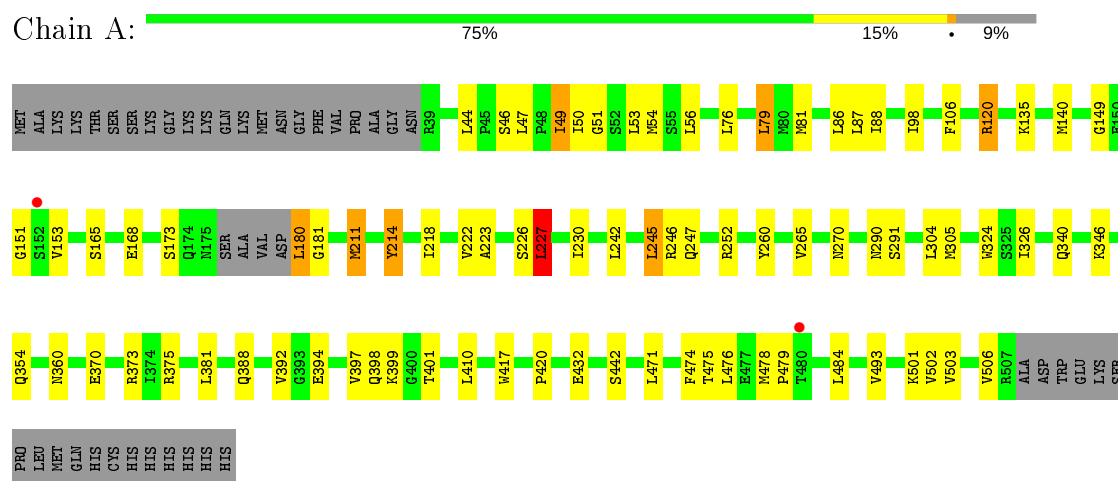
- Molecule 6 is water.

Mol	Chain	Residues	Atoms		ZeroOcc	AltConf
6	A	21	Total	O	0	0
			21	21		
6	B	13	Total	O	0	0
			13	13		

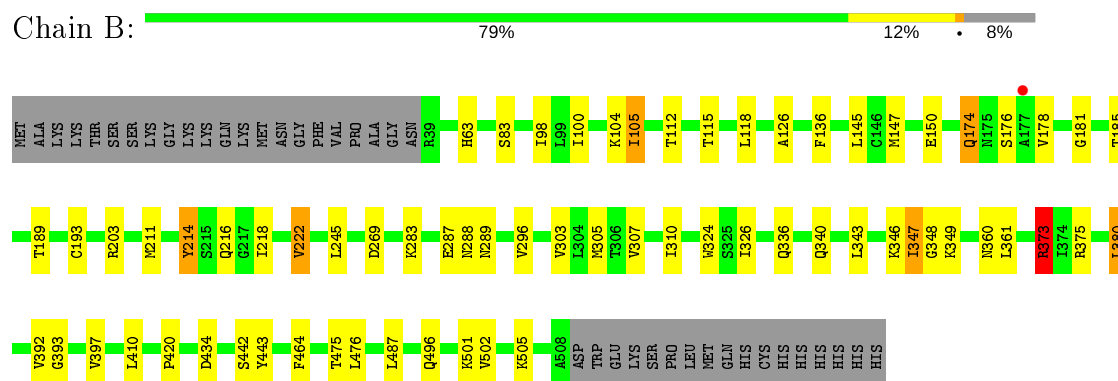
### 3 Residue-property plots

These plots are drawn for all protein, RNA and DNA chains in the entry. The first graphic for a chain summarises the proportions of the various outlier classes displayed in the second graphic. The second graphic shows the sequence view annotated by issues in geometry and electron density. Residues are color-coded according to the number of geometric quality criteria for which they contain at least one outlier: green = 0, yellow = 1, orange = 2 and red = 3 or more. A red dot above a residue indicates a poor fit to the electron density ( $RSRZ > 2$ ). Stretches of 2 or more consecutive residues without any outlier are shown as a green connector. Residues present in the sample, but not in the model, are shown in grey.

- Molecule 1: Cytochrome P450, family 17, subfamily A, polypeptide 1



- Molecule 1: Cytochrome P450, family 17, subfamily A, polypeptide 1



## 4 Data and refinement statistics

Property	Value	Source
Space group	P 41 2 2	Depositor
Cell constants a, b, c, $\alpha$ , $\beta$ , $\gamma$	104.92Å 104.92Å 235.00Å 90.00° 90.00° 90.00°	Depositor
Resolution (Å)	51.26 – 3.03 51.26 – 3.03	Depositor EDS
% Data completeness (in resolution range)	99.6 (51.26-3.03) 99.6 (51.26-3.03)	Depositor EDS
$R_{merge}$	0.12	Depositor
$R_{sym}$	(Not available)	Depositor
$\langle I/\sigma(I) \rangle$ <sup>1</sup>	2.09 (at 3.01Å)	Xtriage
Refinement program	REFMAC 5.8.0158	Depositor
R, $R_{free}$	0.193 , 0.255 0.194 , 0.248	Depositor DCC
$R_{free}$ test set	1330 reflections (5.07%)	wwPDB-VP
Wilson B-factor (Å <sup>2</sup> )	75.6	Xtriage
Anisotropy	0.360	Xtriage
Bulk solvent $k_{sol}$ (e/Å <sup>3</sup> ), $B_{sol}$ (Å <sup>2</sup> )	0.29 , 36.5	EDS
L-test for twinning <sup>2</sup>	$\langle  L  \rangle = 0.49$ , $\langle L^2 \rangle = 0.32$	Xtriage
Estimated twinning fraction	No twinning to report.	Xtriage
$F_o, F_c$ correlation	0.95	EDS
Total number of atoms	7579	wwPDB-VP
Average B, all atoms (Å <sup>2</sup> )	77.0	wwPDB-VP

Xtriage's analysis on translational NCS is as follows: *The largest off-origin peak in the Patterson function is 17.05% of the height of the origin peak. No significant pseudotranslation is detected.*

<sup>1</sup>Intensities estimated from amplitudes.

<sup>2</sup>Theoretical values of  $\langle |L| \rangle$ ,  $\langle L^2 \rangle$  for acentric reflections are 0.5, 0.333 respectively for untwinned datasets, and 0.375, 0.2 for perfectly twinned datasets.



## 5 Model quality [i](#)

### 5.1 Standard geometry [i](#)

Bond lengths and bond angles in the following residue types are not validated in this section: HEM, CL, AER, ACT

The Z score for a bond length (or angle) is the number of standard deviations the observed value is removed from the expected value. A bond length (or angle) with  $|Z| > 5$  is considered an outlier worth inspection. RMSZ is the root-mean-square of all Z scores of the bond lengths (or angles).

Mol	Chain	Bond lengths		Bond angles	
		RMSZ	$\# Z  > 5$	RMSZ	$\# Z  > 5$
1	A	0.56	0/3756	0.73	0/5078
1	B	0.57	0/3791	0.75	1/5127 (0.0%)
All	All	0.56	0/7547	0.74	1/10205 (0.0%)

Chiral center outliers are detected by calculating the chiral volume of a chiral center and verifying if the center is modelled as a planar moiety or with the opposite hand. A planarity outlier is detected by checking planarity of atoms in a peptide group, atoms in a mainchain group or atoms of a sidechain that are expected to be planar.

Mol	Chain	#Chirality outliers	#Planarity outliers
1	B	0	1

There are no bond length outliers.

All (1) bond angle outliers are listed below:

Mol	Chain	Res	Type	Atoms	Z	Observed( $^{\circ}$ )	Ideal( $^{\circ}$ )
1	B	373	ARG	NE-CZ-NH2	-5.55	117.52	120.30

There are no chirality outliers.

All (1) planarity outliers are listed below:

Mol	Chain	Res	Type	Group
1	B	347	ILE	Peptide

### 5.2 Too-close contacts [i](#)

In the following table, the Non-H and H(model) columns list the number of non-hydrogen atoms and hydrogen atoms in the chain respectively. The H(added) column lists the number of hydrogen atoms added and optimized by MolProbity. The Clashes column lists the number of clashes within

the asymmetric unit, whereas Symm-Clashes lists symmetry related clashes.

Mol	Chain	Non-H	H(model)	H(added)	Clashes	Symm-Clashes
1	A	3678	0	3717	47	1
1	B	3712	0	3748	37	1
2	A	43	0	30	4	0
2	B	43	0	30	7	0
3	A	26	0	31	2	0
3	B	26	0	31	3	0
4	A	4	0	3	0	0
4	B	12	0	9	0	0
5	B	1	0	0	0	0
6	A	21	0	0	0	1
6	B	13	0	0	0	1
All	All	7579	0	7599	87	3

The all-atom clashscore is defined as the number of clashes found per 1000 atoms (including hydrogen atoms). The all-atom clashscore for this structure is 6.

The worst 5 of 87 close contacts within the same asymmetric unit are listed below, sorted by their clash magnitude.

Atom-1	Atom-2	Interatomic distance (Å)	Clash overlap (Å)
1:B:216:GLN:HE22	1:B:496:GLN:HE22	1.03	0.98
1:B:216:GLN:HE22	1:B:496:GLN:NE2	1.74	0.83
1:B:216:GLN:NE2	1:B:496:GLN:HE22	1.79	0.79
1:A:218:ILE:O	1:A:222:VAL:HG23	1.92	0.70
1:A:373:ARG:NH2	1:A:420:PRO:O	2.25	0.70

All (3) symmetry-related close contacts are listed below. The label for Atom-2 includes the symmetry operator and encoded unit-cell translations to be applied.

Atom-1	Atom-2	Interatomic distance (Å)	Clash overlap (Å)
6:A:708:HOH:O	6:A:708:HOH:O[5_655]	1.45	0.75
6:B:708:HOH:O	6:B:708:HOH:O[6_554]	1.75	0.45
1:A:265:VAL:O	1:B:289:ASN:ND2[6_554]	2.18	0.02

## 5.3 Torsion angles

### 5.3.1 Protein backbone

In the following table, the Percentiles column shows the percent Ramachandran outliers of the chain as a percentile score with respect to all X-ray entries followed by that with respect to entries of similar resolution.

The Analysed column shows the number of residues for which the backbone conformation was analysed, and the total number of residues.

Mol	Chain	Analysed	Favoured	Allowed	Outliers	Percentiles	
1	A	461/509 (91%)	425 (92%)	31 (7%)	5 (1%)	14	47
1	B	468/509 (92%)	434 (93%)	28 (6%)	6 (1%)	12	42
All	All	929/1018 (91%)	859 (92%)	59 (6%)	11 (1%)	13	44

5 of 11 Ramachandran outliers are listed below:

Mol	Chain	Res	Type
1	B	105	ILE
1	A	227	LEU
1	A	245	LEU
1	B	178	VAL
1	B	222	VAL

### 5.3.2 Protein sidechains

In the following table, the Percentiles column shows the percent sidechain outliers of the chain as a percentile score with respect to all X-ray entries followed by that with respect to entries of similar resolution.

The Analysed column shows the number of residues for which the sidechain conformation was analysed, and the total number of residues.

Mol	Chain	Analysed	Rotameric	Outliers	Percentiles	
1	A	413/451 (92%)	397 (96%)	16 (4%)	32	66
1	B	416/451 (92%)	405 (97%)	11 (3%)	46	76
All	All	829/902 (92%)	802 (97%)	27 (3%)	38	71

5 of 27 residues with a non-rotameric sidechain are listed below:

Mol	Chain	Res	Type
1	A	291	SER

*Continued on next page...*

*Continued from previous page...*

Mol	Chain	Res	Type
1	A	475	THR
1	B	373	ARG
1	A	394	GLU
1	A	120	ARG

Some sidechains can be flipped to improve hydrogen bonding and reduce clashes. All (5) such sidechains are listed below:

Mol	Chain	Res	Type
1	A	270	ASN
1	A	290	ASN
1	B	340	GLN
1	B	419	ASN
1	B	496	GLN

### 5.3.3 RNA ⓘ

There are no RNA molecules in this entry.

## 5.4 Non-standard residues in protein, DNA, RNA chains ⓘ

There are no non-standard protein/DNA/RNA residues in this entry.

## 5.5 Carbohydrates ⓘ

There are no carbohydrates in this entry.

## 5.6 Ligand geometry ⓘ

Of 9 ligands modelled in this entry, 1 is monoatomic - leaving 8 for Mogul analysis.

In the following table, the Counts columns list the number of bonds (or angles) for which Mogul statistics could be retrieved, the number of bonds (or angles) that are observed in the model and the number of bonds (or angles) that are defined in the Chemical Component Dictionary. The Link column lists molecule types, if any, to which the group is linked. The Z score for a bond length (or angle) is the number of standard deviations the observed value is removed from the expected value. A bond length (or angle) with  $|Z| > 2$  is considered an outlier worth inspection. RMSZ is the root-mean-square of all Z scores of the bond lengths (or angles).

Mol	Type	Chain	Res	Link	Bond lengths			Bond angles		
					Counts	RMSZ	# Z  > 2	Counts	RMSZ	# Z  > 2
4	ACT	B	605	-	1,3,3	0.93	0	0,3,3	0.00	-
4	ACT	B	606	-	1,3,3	1.74	0	0,3,3	0.00	-
4	ACT	B	604	-	1,3,3	3.06	1 (100%)	0,3,3	0.00	-
2	HEM	A	601	1,3	27,50,50	1.03	2 (7%)	17,82,82	1.51	3 (17%)
3	AER	B	602	2	30,30,30	2.34	2 (6%)	44,47,47	2.36	14 (31%)
4	ACT	A	603	-	1,3,3	0.90	0	0,3,3	0.00	-
2	HEM	B	601	1,3	27,50,50	1.14	3 (11%)	17,82,82	1.46	3 (17%)
3	AER	A	602	2	30,30,30	2.28	1 (3%)	44,47,47	2.51	9 (20%)

In the following table, the Chirals column lists the number of chiral outliers, the number of chiral centers analysed, the number of these observed in the model and the number defined in the Chemical Component Dictionary. Similar counts are reported in the Torsion and Rings columns. '-' means no outliers of that kind were identified.

Mol	Type	Chain	Res	Link	Chirals	Torsions	Rings
3	AER	A	602	2	-	2/4/62/62	0/5/5/5
2	HEM	A	601	1,3	-	0/6/54/54	-
3	AER	B	602	2	-	2/4/62/62	0/5/5/5
2	HEM	B	601	1,3	-	0/6/54/54	-

The worst 5 of 9 bond length outliers are listed below:

Mol	Chain	Res	Type	Atoms	Z	Observed(Å)	Ideal(Å)
3	B	602	AER	C16-C17	12.02	1.54	1.33
3	A	602	AER	C16-C17	11.81	1.54	1.33
4	B	604	ACT	CH3-C	3.06	1.52	1.48
2	B	601	HEM	C3B-C2B	-3.00	1.36	1.40
2	B	601	HEM	C4D-C3D	2.62	1.48	1.42

The worst 5 of 29 bond angle outliers are listed below:

Mol	Chain	Res	Type	Atoms	Z	Observed(°)	Ideal(°)
3	A	602	AER	C15-C16-C17	-11.25	103.62	112.87
3	B	602	AER	C15-C16-C17	-7.13	107.01	112.87
3	B	602	AER	C15-C14-C8	-7.07	113.08	121.57
3	B	602	AER	C20-C17-C16	-6.81	115.84	125.19
3	A	602	AER	C20-C17-C16	-6.74	115.94	125.19

There are no chirality outliers.

All (4) torsion outliers are listed below:

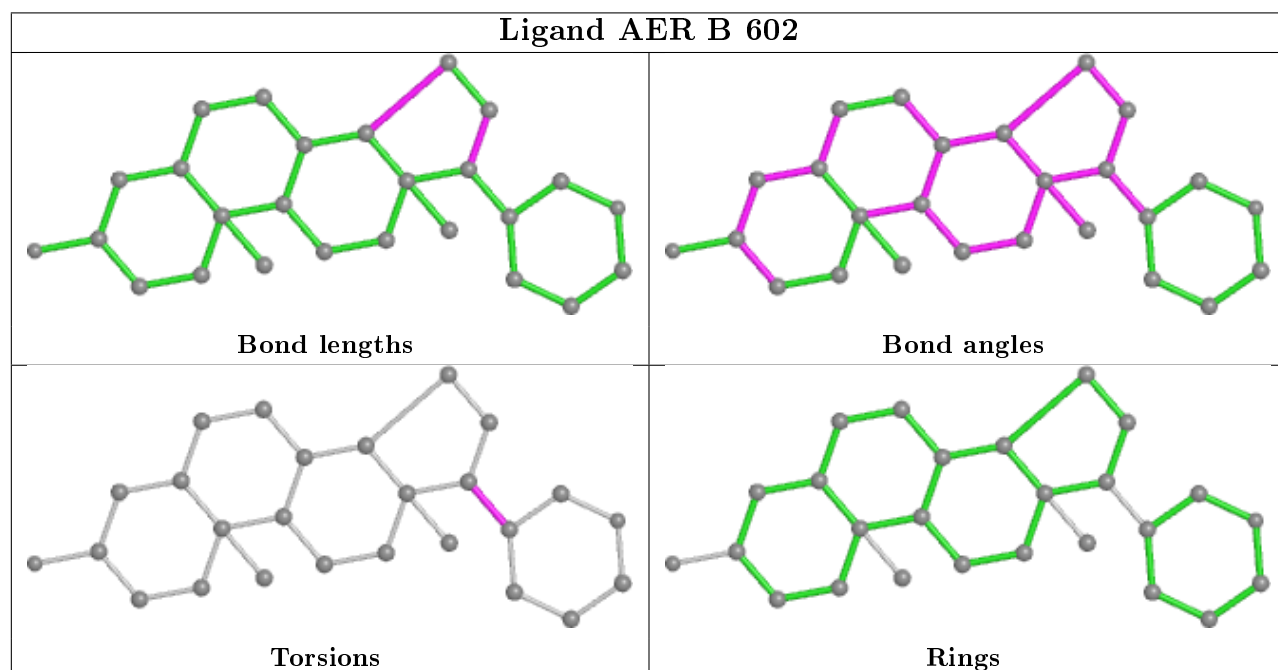
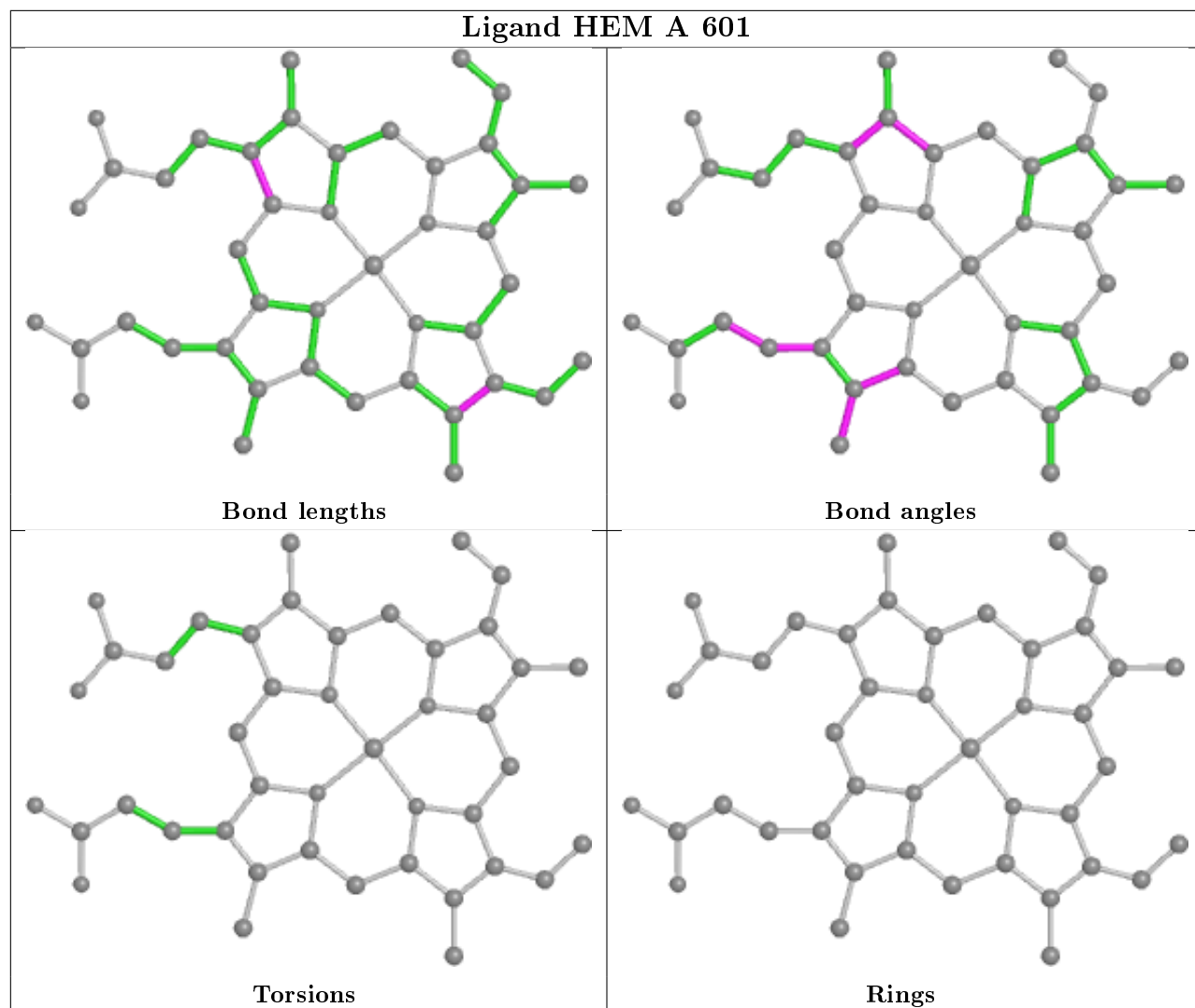
Mol	Chain	Res	Type	Atoms
3	B	602	AER	C13-C17-C20-C21
3	B	602	AER	C13-C17-C20-C25
3	A	602	AER	C13-C17-C20-C25
3	A	602	AER	C13-C17-C20-C21

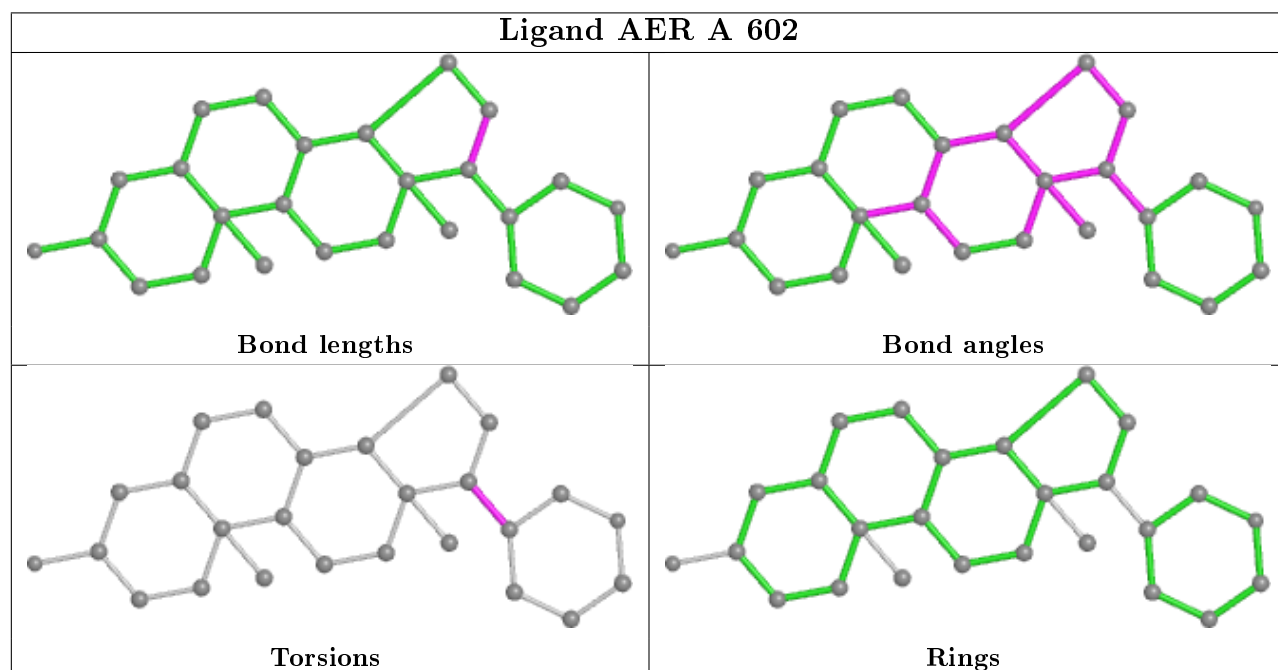
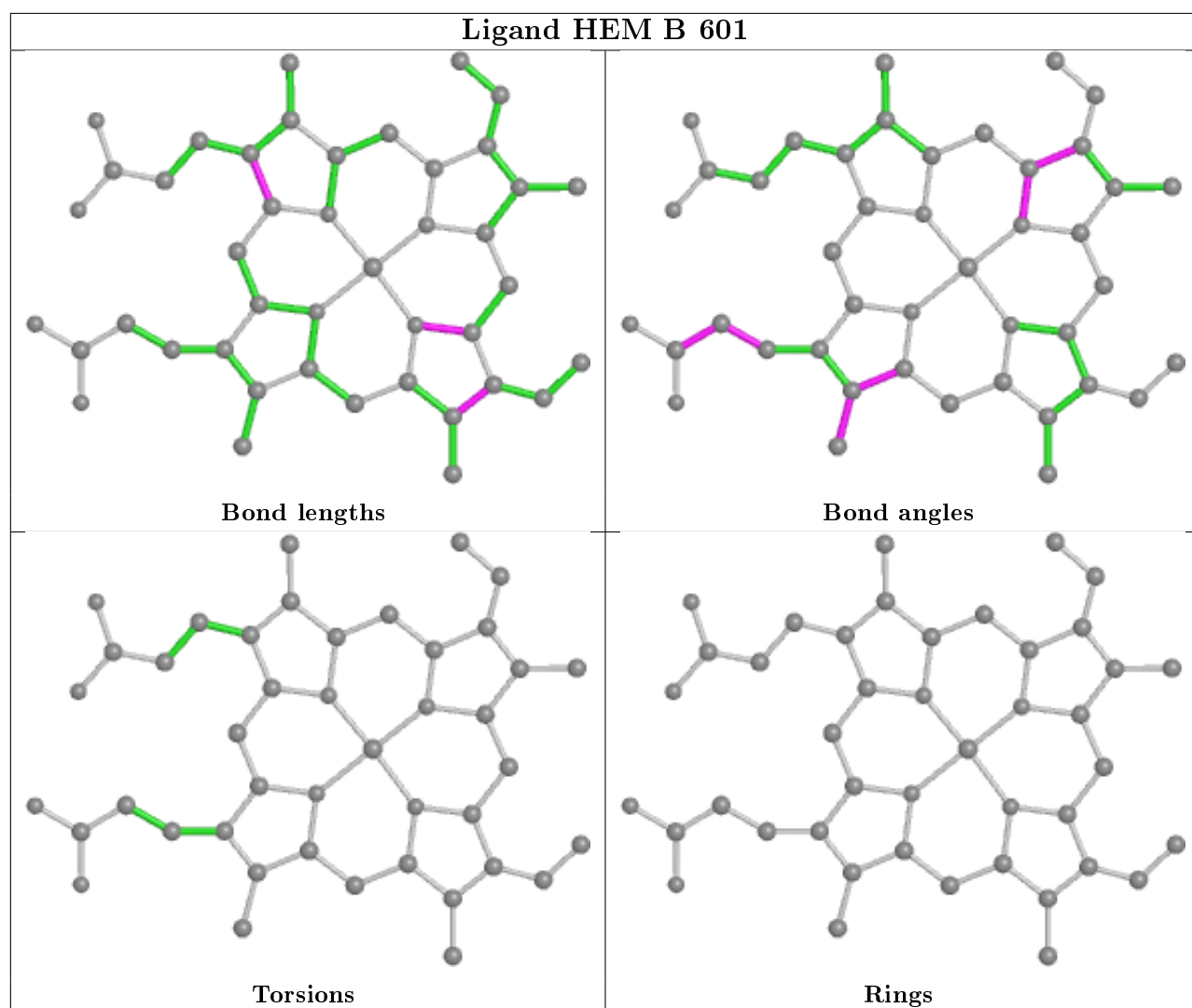
There are no ring outliers.

4 monomers are involved in 11 short contacts:

Mol	Chain	Res	Type	Clashes	Symm-Clashes
2	A	601	HEM	4	0
3	B	602	AER	3	0
2	B	601	HEM	7	0
3	A	602	AER	2	0

The following is a two-dimensional graphical depiction of Mogul quality analysis of bond lengths, bond angles, torsion angles, and ring geometry for all instances of the Ligand of Interest. In addition, ligands with molecular weight > 250 and outliers as shown on the validation Tables will also be included. For torsion angles, if less than 5% of the Mogul distribution of torsion angles is within 10 degrees of the torsion angle in question, then that torsion angle is considered an outlier. Any bond that is central to one or more torsion angles identified as an outlier by Mogul will be highlighted in the graph. For rings, the root-mean-square deviation (RMSD) between the ring in question and similar rings identified by Mogul is calculated over all ring torsion angles. If the average RMSD is greater than 60 degrees and the minimal RMSD between the ring in question and any Mogul-identified rings is also greater than 60 degrees, then that ring is considered an outlier. The outliers are highlighted in purple. The color gray indicates Mogul did not find sufficient equivalents in the CSD to analyse the geometry.







## 5.7 Other polymers [i](#)

There are no such residues in this entry.

## 5.8 Polymer linkage issues [i](#)

There are no chain breaks in this entry.

## 6 Fit of model and data [i](#)

### 6.1 Protein, DNA and RNA chains [i](#)

In the following table, the column labelled '#RSRZ > 2' contains the number (and percentage) of RSRZ outliers, followed by percent RSRZ outliers for the chain as percentile scores relative to all X-ray entries and entries of similar resolution. The OWAB column contains the minimum, median, 95<sup>th</sup> percentile and maximum values of the occupancy-weighted average B-factor per residue. The column labelled 'Q < 0.9' lists the number of (and percentage) of residues with an average occupancy less than 0.9.

Mol	Chain	Analysed	<RSRZ>	#RSRZ>2	OWAB(Å <sup>2</sup> )	Q<0.9
1	A	465/509 (91%)	-0.46	2 (0%) 92 79	57, 76, 112, 140	9 (1%)
1	B	470/509 (92%)	-0.48	1 (0%) 95 87	54, 74, 110, 166	11 (2%)
All	All	935/1018 (91%)	-0.47	3 (0%) 94 83	54, 75, 111, 166	20 (2%)

All (3) RSRZ outliers are listed below:

Mol	Chain	Res	Type	RSRZ
1	A	152	SER	2.9
1	B	177	ALA	2.6
1	A	480	THR	2.2

### 6.2 Non-standard residues in protein, DNA, RNA chains [i](#)

There are no non-standard protein/DNA/RNA residues in this entry.

### 6.3 Carbohydrates [i](#)

There are no carbohydrates in this entry.

### 6.4 Ligands [i](#)

In the following table, the Atoms column lists the number of modelled atoms in the group and the number defined in the chemical component dictionary. The B-factors column lists the minimum, median, 95<sup>th</sup> percentile and maximum values of B factors of atoms in the group. The column labelled 'Q < 0.9' lists the number of atoms with occupancy less than 0.9.

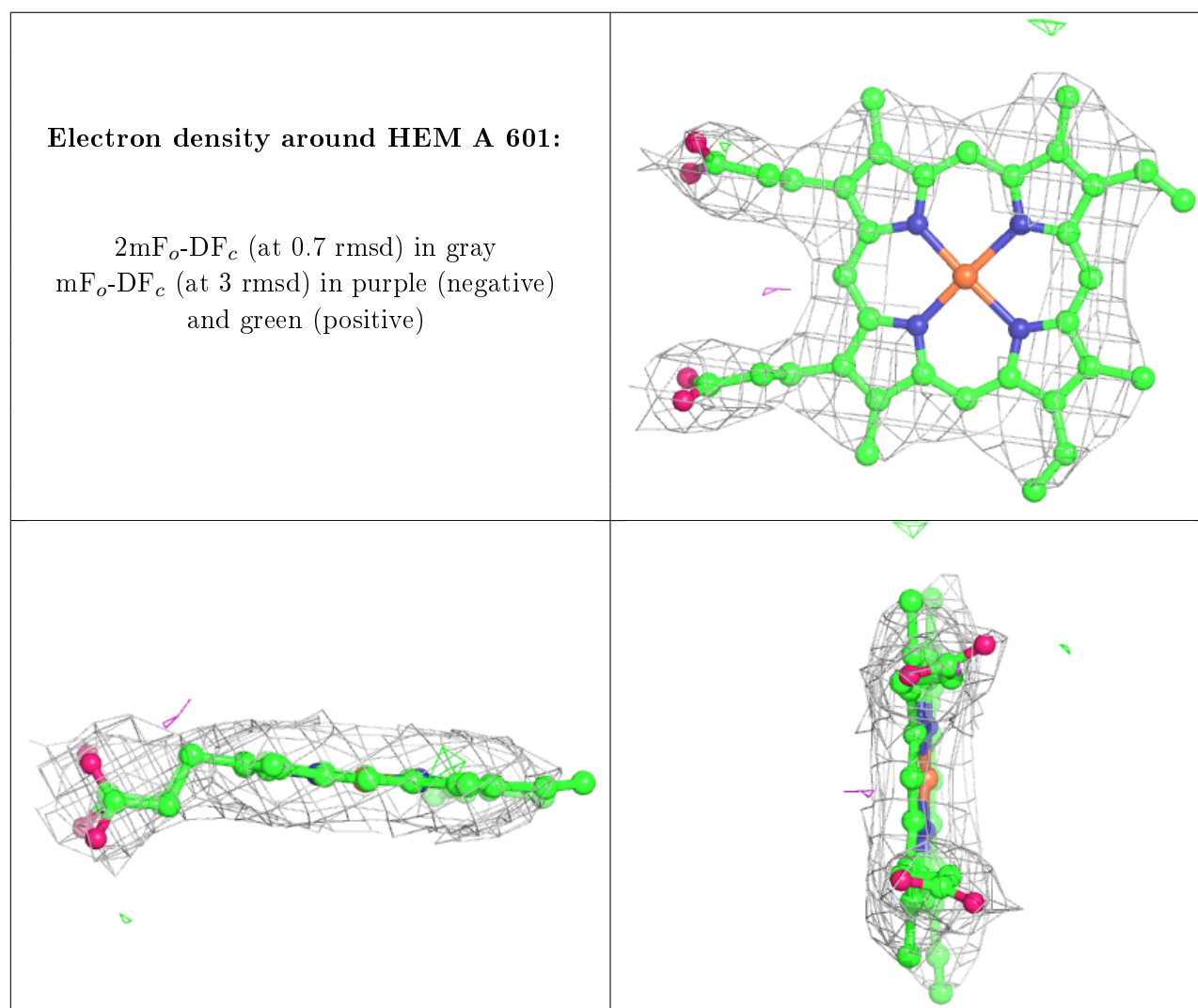
Mol	Type	Chain	Res	Atoms	RSCC	RSR	B-factors(Å <sup>2</sup> )	Q<0.9
4	ACT	B	606	4/4	0.69	0.29	85,93,95,99	0
4	ACT	B	604	4/4	0.85	0.25	93,97,100,103	0

*Continued on next page...*

*Continued from previous page...*

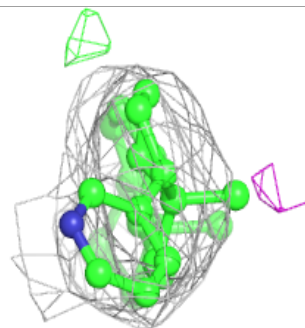
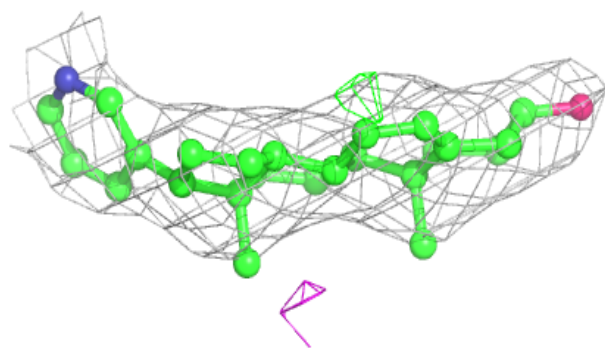
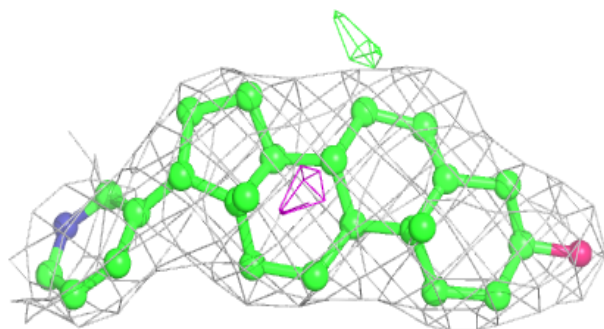
Mol	Type	Chain	Res	Atoms	RSCC	RSR	B-factors( $\text{\AA}^2$ )	Q<0.9
5	CL	B	603	1/1	0.88	0.49	94,94,94,94	0
4	ACT	B	605	4/4	0.93	0.18	71,90,92,94	0
4	ACT	A	603	4/4	0.94	0.20	67,80,81,83	0
2	HEM	A	601	43/43	0.97	0.21	50,56,70,75	0
3	AER	B	602	26/26	0.98	0.19	53,58,61,66	0
2	HEM	B	601	43/43	0.98	0.20	51,56,65,74	0
3	AER	A	602	26/26	0.98	0.19	58,63,68,71	0

The following is a graphical depiction of the model fit to experimental electron density of all instances of the Ligand of Interest. In addition, ligands with molecular weight > 250 and outliers as shown on the geometry validation Tables will also be included. Each fit is shown from different orientation to approximate a three-dimensional view.



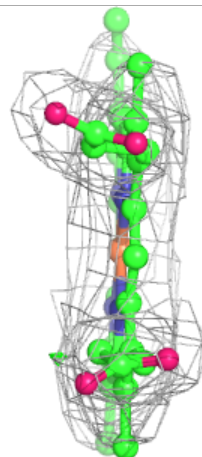
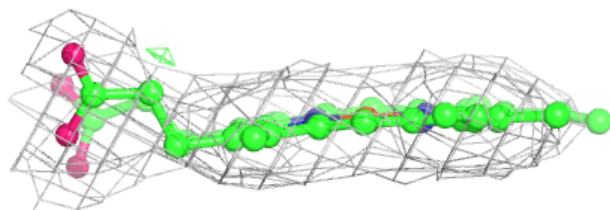
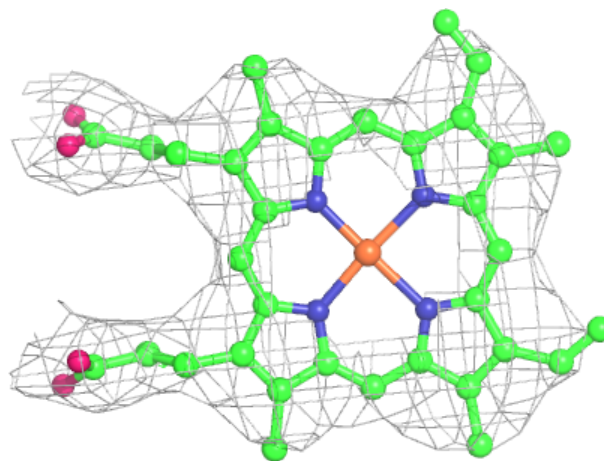
**Electron density around AER B 602:**

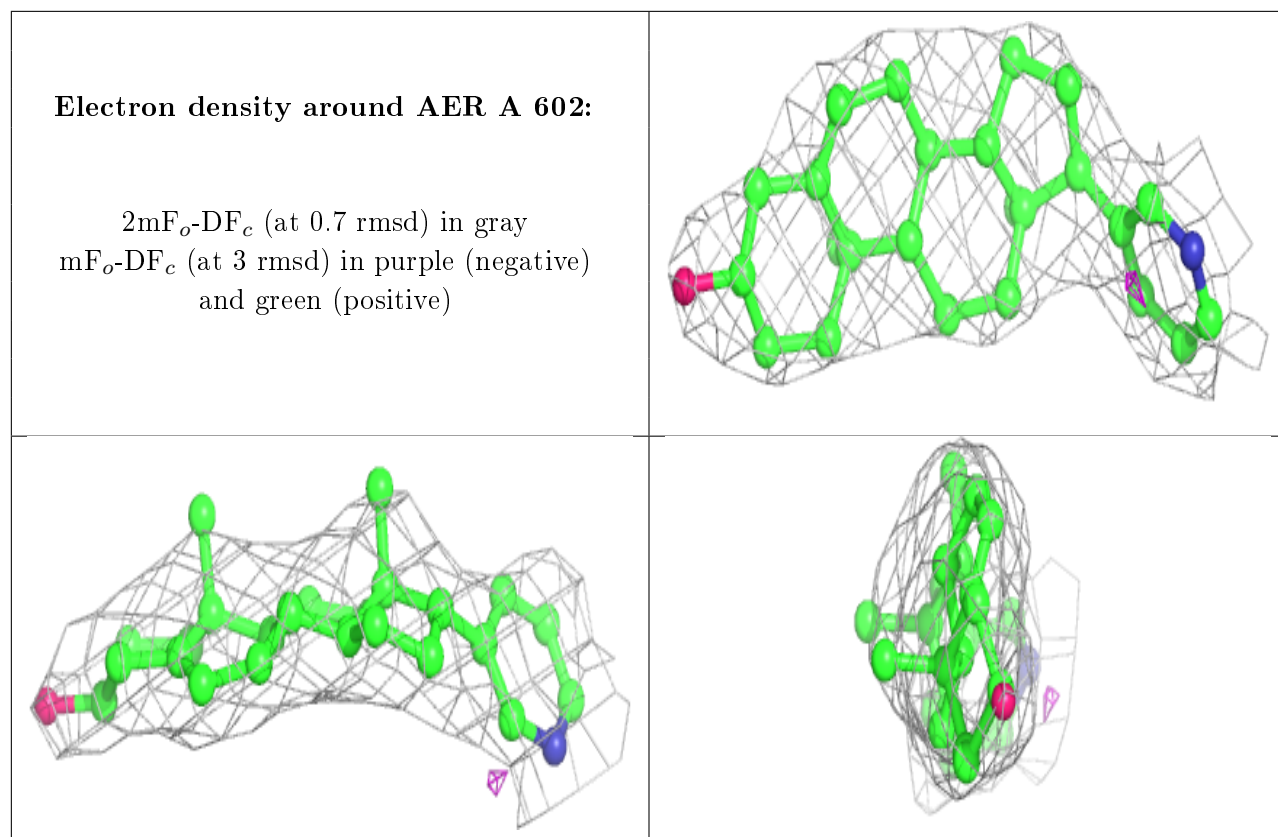
$2mF_o-DF_c$  (at 0.7 rmsd) in gray  
 $mF_o-DF_c$  (at 3 rmsd) in purple (negative)  
and green (positive)



**Electron density around HEM B 601:**

$2mF_o-DF_c$  (at 0.7 rmsd) in gray  
 $mF_o-DF_c$  (at 3 rmsd) in purple (negative)  
and green (positive)





## 6.5 Other polymers [i](#)

There are no such residues in this entry.