



Full wwPDB X-ray Structure Validation Report ⓘ

Jan 14, 2021 – 03:04 PM GMT

PDB ID : 7B9W
Title : Crystal structure of MurE from E.coli in complex with Z757284380
Authors : Koekemoer, L.; Steindel, M.; Fairhead, M.; Arrowsmith, C.H.; Edwards, A.M.;
Bountra, C.; von Delft, F.; Krojer, T.; Structural Genomics Consortium (SGC)
Deposited on : 2020-12-14
Resolution : 1.82 Å(reported)

This is a Full wwPDB X-ray Structure Validation Report for a publicly released PDB entry.

We welcome your comments at validation@mail.wwpdb.org

A user guide is available at

<https://www.wwpdb.org/validation/2017/XrayValidationReportHelp>

with specific help available everywhere you see the ⓘ symbol.

The following versions of software and data (see [references ⓘ](#)) were used in the production of this report:

MolProbity : 4.02b-467
Mogul : 1.8.5 (274361), CSD as541be (2020)
Xtriage (Phenix) : 1.13
EDS : 2.16
buster-report : 1.1.7 (2018)
Percentile statistics : 20191225.v01 (using entries in the PDB archive December 25th 2019)
Refmac : 5.8.0158
CCP4 : 7.0.044 (Gargrove)
Ideal geometry (proteins) : Engh & Huber (2001)
Ideal geometry (DNA, RNA) : Parkinson et al. (1996)
Validation Pipeline (wwPDB-VP) : 2.16

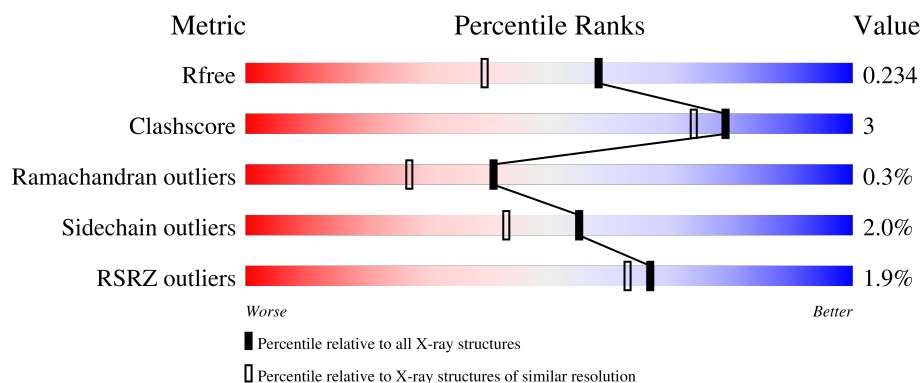
1 Overall quality at a glance

The following experimental techniques were used to determine the structure:

X-RAY DIFFRACTION

The reported resolution of this entry is 1.82 Å.

Percentile scores (ranging between 0-100) for global validation metrics of the entry are shown in the following graphic. The table shows the number of entries on which the scores are based.



Metric	Whole archive (#Entries)	Similar resolution (#Entries, resolution range(Å))
R_{free}	130704	7484 (1.84-1.80)
Clashscore	141614	8401 (1.84-1.80)
Ramachandran outliers	138981	8290 (1.84-1.80)
Sidechain outliers	138945	8290 (1.84-1.80)
RSRZ outliers	127900	7371 (1.84-1.80)

The table below summarises the geometric issues observed across the polymeric chains and their fit to the electron density. The red, orange, yellow and green segments of the lower bar indicate the fraction of residues that contain outliers for ≥ 3 , 2, 1 and 0 types of geometric quality criteria respectively. A grey segment represents the fraction of residues that are not modelled. The numeric value for each fraction is indicated below the corresponding segment, with a dot representing fractions $\leq 5\%$. The upper red bar (where present) indicates the fraction of residues that have poor fit to the electron density. The numeric value is given above the bar.

Mol	Chain	Length	Quality of chain
1	AAA	496	
1	BBB	496	

2 Entry composition [i](#)

There are 4 unique types of molecules in this entry. The entry contains 7731 atoms, of which 0 are hydrogens and 0 are deuteriums.

In the tables below, the ZeroOcc column contains the number of atoms modelled with zero occupancy, the AltConf column contains the number of residues with at least one atom in alternate conformation and the Trace column contains the number of residues modelled with at most 2 atoms.

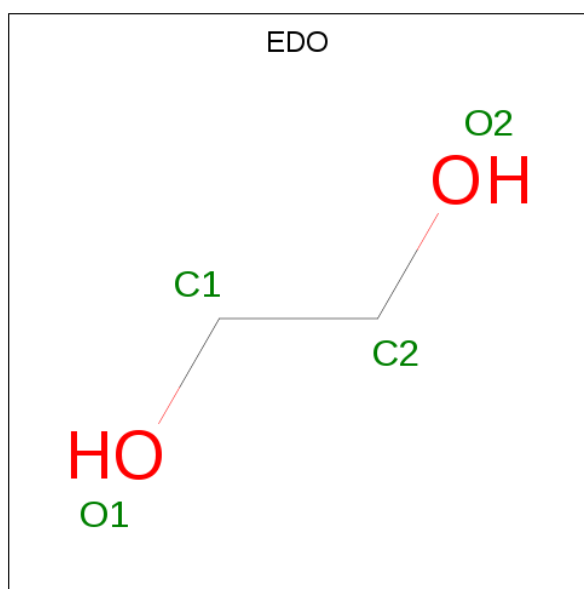
- Molecule 1 is a protein called UDP-N-acetylmuramoyl-L-alanyl-D-glutamate-2,6-diaminopimelate ligase.

Mol	Chain	Residues	Atoms					ZeroOcc	AltConf	Trace
1	AAA	487	Total	C	N	O	S	0	9	0
			3760	2349	681	709	21			
1	BBB	477	Total	C	N	O	S	0	7	0
			3641	2277	651	691	22			

There are 2 discrepancies between the modelled and reference sequences:

Chain	Residue	Modelled	Actual	Comment	Reference
AAA	0	SER	-	expression tag	UNP P22188
BBB	0	SER	-	expression tag	UNP P22188

- Molecule 2 is 1,2-ETHANEDIOL (three-letter code: EDO) (formula: C₂H₆O₂).



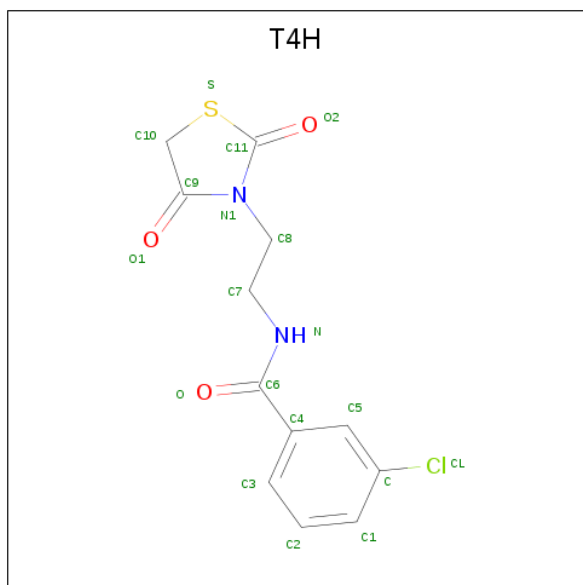
Mol	Chain	Residues	Atoms			ZeroOcc	AltConf
2	AAA	1	Total	C	O	0	0
			4	2	2		

Continued on next page...

Continued from previous page...

Mol	Chain	Residues	Atoms			ZeroOcc	AltConf
2	AAA	1	Total	C	O	0	0
			4	2	2		

- Molecule 3 is 3-Chloro-N-[2-(2,4-dioxo-1,3-thiazolidin-3-yl)ethyl]benzamide (three-letter code: T4H) (formula: C₁₂H₁₁ClN₂O₃S) (labeled as "Ligand of Interest" by depositor).



Mol	Chain	Residues	Atoms						ZeroOcc	AltConf
3	BBB	1	Total	C	Cl	N	O	S	0	0
			19	12	1	2	3	1		

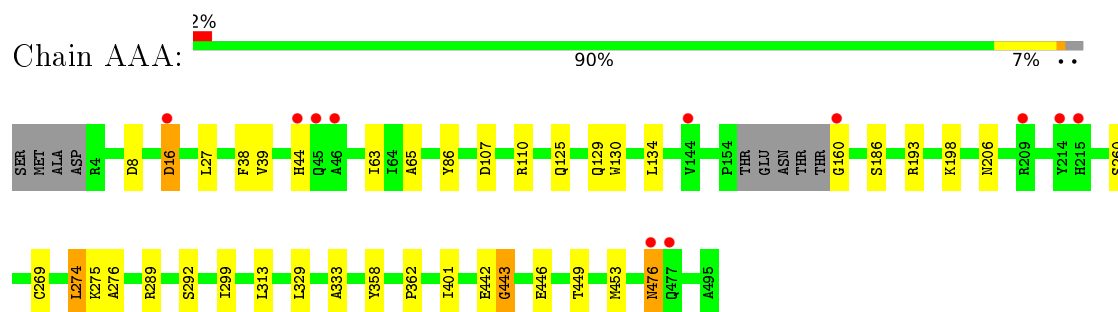
- Molecule 4 is water.

Mol	Chain	Residues	Atoms		ZeroOcc	AltConf
4	AAA	143	Total	O	0	0
			143	143		
4	BBB	160	Total	O	0	0
			160	160		

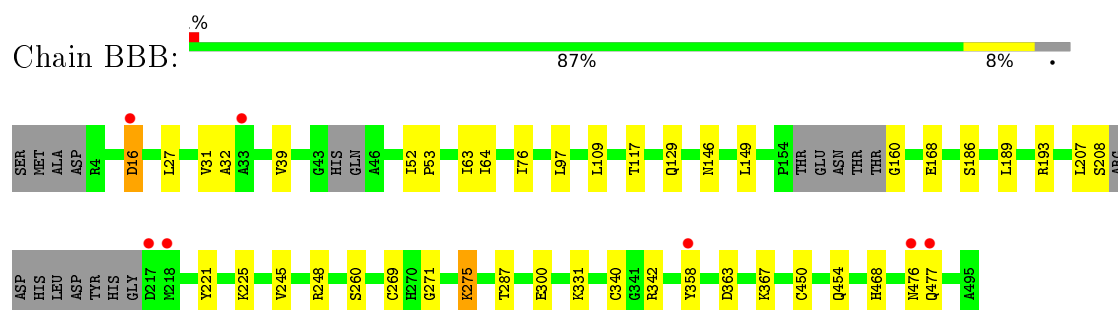
3 Residue-property plots [i](#)

These plots are drawn for all protein, RNA, DNA and oligosaccharide chains in the entry. The first graphic for a chain summarises the proportions of the various outlier classes displayed in the second graphic. The second graphic shows the sequence view annotated by issues in geometry and electron density. Residues are color-coded according to the number of geometric quality criteria for which they contain at least one outlier: green = 0, yellow = 1, orange = 2 and red = 3 or more. A red dot above a residue indicates a poor fit to the electron density ($RSRZ > 2$). Stretches of 2 or more consecutive residues without any outlier are shown as a green connector. Residues present in the sample, but not in the model, are shown in grey.

- Molecule 1: UDP-N-acetylmuramoyl-L-alanyl-D-glutamate-2,6-diaminopimelate ligase



- Molecule 1: UDP-N-acetylmuramoyl-L-alanyl-D-glutamate-2,6-diaminopimelate ligase



4 Data and refinement statistics

Property	Value	Source
Space group	P 1	Depositor
Cell constants a, b, c, α , β , γ	58.41Å 58.62Å 74.44Å 97.11° 91.54° 104.84°	Depositor
Resolution (Å)	56.34 – 1.82 56.36 – 1.78	Depositor EDS
% Data completeness (in resolution range)	96.2 (56.34-1.82) 96.3 (56.36-1.78)	Depositor EDS
R_{merge}	0.07	Depositor
R_{sym}	(Not available)	Depositor
$\langle I/\sigma(I) \rangle$ ¹	1.01 (at 1.78Å)	Xtriage
Refinement program	REFMAC 5.8.0267	Depositor
R, R_{free}	0.193 , 0.231 0.197 , 0.234	Depositor DCC
R_{free} test set	4460 reflections (5.11%)	wwPDB-VP
Wilson B-factor (Å ²)	35.1	Xtriage
Anisotropy	0.046	Xtriage
Bulk solvent k_{sol} (e/Å ³), B_{sol} (Å ²)	0.33 , 38.9	EDS
L-test for twinning ²	$\langle L \rangle = 0.50$, $\langle L^2 \rangle = 0.33$	Xtriage
Estimated twinning fraction	No twinning to report.	Xtriage
F_o, F_c correlation	0.97	EDS
Total number of atoms	7731	wwPDB-VP
Average B, all atoms (Å ²)	42.0	wwPDB-VP

Xtriage's analysis on translational NCS is as follows: *The largest off-origin peak in the Patterson function is 6.14% of the height of the origin peak. No significant pseudotranslation is detected.*

¹Intensities estimated from amplitudes.

²Theoretical values of $\langle |L| \rangle$, $\langle L^2 \rangle$ for acentric reflections are 0.5, 0.333 respectively for untwinned datasets, and 0.375, 0.2 for perfectly twinned datasets.

5 Model quality [i](#)

5.1 Standard geometry [i](#)

Bond lengths and bond angles in the following residue types are not validated in this section: T4H, EDO

The Z score for a bond length (or angle) is the number of standard deviations the observed value is removed from the expected value. A bond length (or angle) with $|Z| > 5$ is considered an outlier worth inspection. RMSZ is the root-mean-square of all Z scores of the bond lengths (or angles).

Mol	Chain	Bond lengths		Bond angles	
		RMSZ	$\# Z > 5$	RMSZ	$\# Z > 5$
1	AAA	0.69	0/3829	0.81	0/5197
1	BBB	0.71	0/3707	0.81	0/5032
All	All	0.70	0/7536	0.81	0/10229

Chiral center outliers are detected by calculating the chiral volume of a chiral center and verifying if the center is modelled as a planar moiety or with the opposite hand. A planarity outlier is detected by checking planarity of atoms in a peptide group, atoms in a mainchain group or atoms of a sidechain that are expected to be planar.

Mol	Chain	#Chirality outliers	#Planarity outliers
1	AAA	0	1

There are no bond length outliers.

There are no bond angle outliers.

There are no chirality outliers.

All (1) planarity outliers are listed below:

Mol	Chain	Res	Type	Group
1	AAA	442	GLU	Peptide

5.2 Too-close contacts [i](#)

In the following table, the Non-H and H(model) columns list the number of non-hydrogen atoms and hydrogen atoms in the chain respectively. The H(added) column lists the number of hydrogen atoms added and optimized by MolProbity. The Clashes column lists the number of clashes within the asymmetric unit, whereas Symm-Clashes lists symmetry-related clashes.

Mol	Chain	Non-H	H(model)	H(added)	Clashes	Symm-Clashes
1	AAA	3760	0	3711	21	0
1	BBB	3641	0	3602	22	0
2	AAA	8	0	12	0	0
3	BBB	19	0	0	1	0
4	AAA	143	0	0	1	0
4	BBB	160	0	0	1	0
All	All	7731	0	7325	42	0

The all-atom clashscore is defined as the number of clashes found per 1000 atoms (including hydrogen atoms). The all-atom clashscore for this structure is 3.

All (42) close contacts within the same asymmetric unit are listed below, sorted by their clash magnitude.

Atom-1	Atom-2	Interatomic distance (Å)	Clash overlap (Å)
1:AAA:269[A]:CYS:SG	4:AAA:710:HOH:O	2.29	0.91
1:BBB:342:ARG:NH1	4:BBB:601:HOH:O	2.14	0.80
1:AAA:125[B]:GLN:HG2	1:AAA:129:GLN:HE21	1.50	0.76
1:BBB:52:ILE:CD1	1:BBB:63:ILE:HG21	2.20	0.72
1:AAA:44:HIS:CG	1:AAA:44:HIS:O	2.43	0.71
1:AAA:443:GLY:HA3	1:AAA:446:GLU:OE1	1.94	0.67
1:AAA:274:LEU:HD12	1:AAA:292:SER:HB3	1.77	0.66
1:BBB:52:ILE:HD12	1:BBB:63:ILE:HG21	1.82	0.61
1:AAA:16:ASP:N	1:AAA:16:ASP:OD1	2.35	0.58
1:BBB:363[B]:ASP:OD2	1:BBB:367:LYS:HE2	2.03	0.58
1:BBB:287:THR:OG1	1:BBB:300:GLU:OE2	2.13	0.57
1:AAA:260:SER:O	1:AAA:275:LYS:HA	2.05	0.57
1:BBB:117:THR:HG21	1:BBB:208:SER:H	1.71	0.56
1:BBB:221:TYR:CZ	1:BBB:225:LYS:HD2	2.42	0.55
1:BBB:27:LEU:HD23	1:BBB:39:VAL:HB	1.91	0.52
1:BBB:146:ASN:ND2	1:BBB:168:GLU:HG2	2.25	0.51
1:BBB:260:SER:O	1:BBB:275:LYS:HA	2.10	0.51
1:BBB:450:CYS:SG	1:BBB:454:GLN:NE2	2.85	0.49
1:AAA:476:ASN:C	1:AAA:476:ASN:HD22	2.16	0.49
1:AAA:8[A]:ASP:OD1	1:BBB:331:LYS:NZ	2.46	0.49
1:AAA:134:LEU:HD11	1:AAA:329:LEU:HD23	1.95	0.49
1:AAA:65:ALA:O	1:AAA:86:TYR:HA	2.14	0.48
1:BBB:340:CYS:SG	1:BBB:468:HIS:CG	3.08	0.47
1:BBB:129:GLN:HA	1:BBB:149:LEU:HD21	1.96	0.47
1:BBB:160:GLY:O	1:BBB:193:ARG:HD3	2.15	0.47
1:AAA:107:ASP:OD1	1:AAA:198:LYS:HD2	2.15	0.46
1:AAA:362:PRO:O	1:AAA:401:ILE:HD13	2.16	0.46
1:AAA:44:HIS:CD2	1:AAA:44:HIS:O	2.70	0.44

Continued on next page...

Continued from previous page...

Atom-1	Atom-2	Interatomic distance (Å)	Clash overlap (Å)
1:BBB:52:ILE:N	1:BBB:53:PRO:CD	2.81	0.43
1:AAA:110[B]:ARG:HB2	1:AAA:110[B]:ARG:HE	1.62	0.43
1:AAA:27:LEU:HD23	1:AAA:39:VAL:HB	2.01	0.43
1:AAA:276:ALA:HB2	1:AAA:313:LEU:HD11	2.01	0.43
1:BBB:64:ILE:HD13	1:BBB:97:LEU:HD21	2.00	0.42
1:AAA:449:THR:O	1:AAA:453:MET:HG2	2.19	0.42
1:BBB:189:LEU:HD21	3:BBB:501:T4H:O	2.20	0.42
1:BBB:109:LEU:C	1:BBB:109:LEU:HD12	2.40	0.42
1:BBB:16:ASP:HB2	1:BBB:76:ILE:CD1	2.50	0.41
1:BBB:269[B]:CYS:SG	1:BBB:271:GLY:N	2.91	0.40
1:AAA:38:PHE:O	1:AAA:63:ILE:HA	2.21	0.40
1:AAA:160:GLY:O	1:AAA:193:ARG:NE	2.54	0.40
1:AAA:299:ILE:HG23	1:AAA:333:ALA:HB1	2.03	0.40
1:BBB:207:LEU:HD23	1:BBB:245:VAL:HG21	2.04	0.40

There are no symmetry-related clashes.

5.3 Torsion angles [i](#)

5.3.1 Protein backbone [i](#)

In the following table, the Percentiles column shows the percent Ramachandran outliers of the chain as a percentile score with respect to all X-ray entries followed by that with respect to entries of similar resolution.

The Analysed column shows the number of residues for which the backbone conformation was analysed, and the total number of residues.

Mol	Chain	Analysed	Favoured	Allowed	Outliers	Percentiles	
1	AAA	492/496 (99%)	472 (96%)	18 (4%)	2 (0%)	34	21
1	BBB	476/496 (96%)	464 (98%)	11 (2%)	1 (0%)	47	33
All	All	968/992 (98%)	936 (97%)	29 (3%)	3 (0%)	41	27

All (3) Ramachandran outliers are listed below:

Mol	Chain	Res	Type
1	AAA	206	ASN
1	AAA	443	GLY
1	BBB	32	ALA

5.3.2 Protein sidechains ⓘ

In the following table, the Percentiles column shows the percent sidechain outliers of the chain as a percentile score with respect to all X-ray entries followed by that with respect to entries of similar resolution.

The Analysed column shows the number of residues for which the sidechain conformation was analysed, and the total number of residues.

Mol	Chain	Analysed	Rotameric	Outliers	Percentiles	
1	AAA	388/387 (100%)	381 (98%)	7 (2%)	59	48
1	BBB	377/387 (97%)	369 (98%)	8 (2%)	53	41
All	All	765/774 (99%)	750 (98%)	15 (2%)	55	43

All (15) residues with a non-rotameric sidechain are listed below:

Mol	Chain	Res	Type
1	AAA	16	ASP
1	AAA	130	TRP
1	AAA	186	SER
1	AAA	274	LEU
1	AAA	289	ARG
1	AAA	358	TYR
1	AAA	476	ASN
1	BBB	16	ASP
1	BBB	31	VAL
1	BBB	186	SER
1	BBB	248	ARG
1	BBB	275	LYS
1	BBB	358	TYR
1	BBB	476	ASN
1	BBB	477	GLN

Sometimes sidechains can be flipped to improve hydrogen bonding and reduce clashes. There are no such sidechains identified.

5.3.3 RNA ⓘ

There are no RNA molecules in this entry.

5.4 Non-standard residues in protein, DNA, RNA chains ⓘ

There are no non-standard protein/DNA/RNA residues in this entry.

5.5 Carbohydrates [i](#)

There are no monosaccharides in this entry.

5.6 Ligand geometry [i](#)

3 ligands are modelled in this entry.

In the following table, the Counts columns list the number of bonds (or angles) for which Mogul statistics could be retrieved, the number of bonds (or angles) that are observed in the model and the number of bonds (or angles) that are defined in the Chemical Component Dictionary. The Link column lists molecule types, if any, to which the group is linked. The Z score for a bond length (or angle) is the number of standard deviations the observed value is removed from the expected value. A bond length (or angle) with $|Z| > 2$ is considered an outlier worth inspection. RMSZ is the root-mean-square of all Z scores of the bond lengths (or angles).

Mol	Type	Chain	Res	Link	Bond lengths			Bond angles		
					Counts	RMSZ	$\# Z > 2$	Counts	RMSZ	$\# Z > 2$
3	T4H	BBB	501	-	20,20,20	1.82	6 (30%)	25,27,27	1.77	7 (28%)
2	EDO	AAA	502	-	3,3,3	0.32	0	2,2,2	0.26	0
2	EDO	AAA	501	-	3,3,3	0.15	0	2,2,2	0.18	0

In the following table, the Chirals column lists the number of chiral outliers, the number of chiral centers analysed, the number of these observed in the model and the number defined in the Chemical Component Dictionary. Similar counts are reported in the Torsion and Rings columns. '-' means no outliers of that kind were identified.

Mol	Type	Chain	Res	Link	Chirals	Torsions	Rings
3	T4H	BBB	501	-	-	2/10/23/23	0/2/2/2
2	EDO	AAA	502	-	-	0/1/1/1	-
2	EDO	AAA	501	-	-	1/1/1/1	-

All (6) bond length outliers are listed below:

Mol	Chain	Res	Type	Atoms	Z	Observed(Å)	Ideal(Å)
3	BBB	501	T4H	C11-N1	3.95	1.44	1.38
3	BBB	501	T4H	C9-N1	3.29	1.44	1.38
3	BBB	501	T4H	C11-S	2.68	1.81	1.76
3	BBB	501	T4H	C8-C7	2.40	1.58	1.51
3	BBB	501	T4H	C1-C	-2.20	1.33	1.38
3	BBB	501	T4H	C4-C6	2.05	1.54	1.50

All (7) bond angle outliers are listed below:

Mol	Chain	Res	Type	Atoms	Z	Observed($^{\circ}$)	Ideal($^{\circ}$)
3	BBB	501	T4H	C8-C7-N	-4.27	103.43	111.60
3	BBB	501	T4H	C7-C8-N1	3.48	117.66	111.84
3	BBB	501	T4H	C8-N1-C11	2.75	123.95	120.82
3	BBB	501	T4H	C5-C-CL	-2.51	116.02	119.15
3	BBB	501	T4H	C7-N-C6	2.18	127.06	122.08
3	BBB	501	T4H	O1-C9-N1	-2.11	121.59	123.92
3	BBB	501	T4H	O-C6-C4	2.02	124.54	120.94

There are no chirality outliers.

All (3) torsion outliers are listed below:

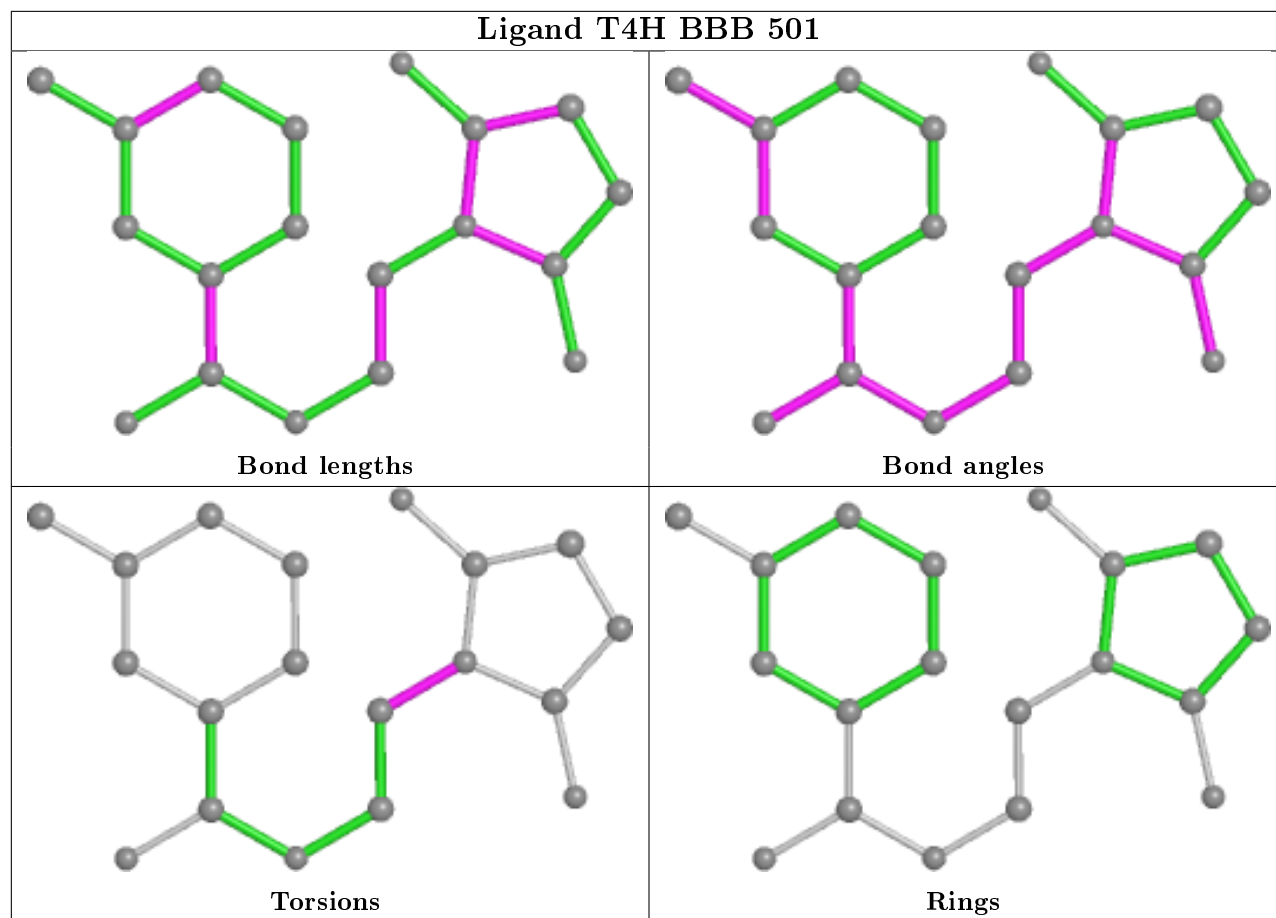
Mol	Chain	Res	Type	Atoms
3	BBB	501	T4H	C7-C8-N1-C11
3	BBB	501	T4H	C7-C8-N1-C9
2	AAA	501	EDO	O1-C1-C2-O2

There are no ring outliers.

1 monomer is involved in 1 short contact:

Mol	Chain	Res	Type	Clashes	Symm-Clashes
3	BBB	501	T4H	1	0

The following is a two-dimensional graphical depiction of Mogul quality analysis of bond lengths, bond angles, torsion angles, and ring geometry for all instances of the Ligand of Interest. In addition, ligands with molecular weight > 250 and outliers as shown on the validation Tables will also be included. For torsion angles, if less than 5% of the Mogul distribution of torsion angles is within 10 degrees of the torsion angle in question, then that torsion angle is considered an outlier. Any bond that is central to one or more torsion angles identified as an outlier by Mogul will be highlighted in the graph. For rings, the root-mean-square deviation (RMSD) between the ring in question and similar rings identified by Mogul is calculated over all ring torsion angles. If the average RMSD is greater than 60 degrees and the minimal RMSD between the ring in question and any Mogul-identified rings is also greater than 60 degrees, then that ring is considered an outlier. The outliers are highlighted in purple. The color gray indicates Mogul did not find sufficient equivalents in the CSD to analyse the geometry.



5.7 Other polymers [i](#)

There are no such residues in this entry.

5.8 Polymer linkage issues [i](#)

There are no chain breaks in this entry.

6 Fit of model and data [i](#)

6.1 Protein, DNA and RNA chains [i](#)

In the following table, the column labelled ‘#RSRZ> 2’ contains the number (and percentage) of RSRZ outliers, followed by percent RSRZ outliers for the chain as percentile scores relative to all X-ray entries and entries of similar resolution. The OWAB column contains the minimum, median, 95th percentile and maximum values of the occupancy-weighted average B-factor per residue. The column labelled ‘Q< 0.9’ lists the number of (and percentage) of residues with an average occupancy less than 0.9.

Mol	Chain	Analysed	<RSRZ>	#RSRZ>2	OWAB(Å ²)	Q<0.9
1	AAA	487/496 (98%)	-0.19	11 (2%) 60 56	24, 39, 67, 108	0
1	BBB	477/496 (96%)	-0.24	7 (1%) 73 70	24, 38, 67, 108	0
All	All	964/992 (97%)	-0.21	18 (1%) 66 63	24, 38, 67, 108	0

All (18) RSRZ outliers are listed below:

Mol	Chain	Res	Type	RSRZ
1	AAA	45	GLN	7.6
1	BBB	217	ASP	4.6
1	AAA	44	HIS	4.5
1	AAA	215	HIS	3.8
1	AAA	209	ARG	3.7
1	AAA	476	ASN	3.4
1	BBB	218	MET	3.1
1	BBB	477	GLN	3.0
1	BBB	33	ALA	3.0
1	AAA	144	VAL	2.7
1	AAA	46	ALA	2.5
1	AAA	477	GLN	2.5
1	BBB	358	TYR	2.3
1	BBB	476	ASN	2.3
1	AAA	16	ASP	2.3
1	AAA	160	GLY	2.3
1	AAA	214	TYR	2.2
1	BBB	16	ASP	2.1

6.2 Non-standard residues in protein, DNA, RNA chains [i](#)

There are no non-standard protein/DNA/RNA residues in this entry.

6.3 Carbohydrates [i](#)

There are no monosaccharides in this entry.

6.4 Ligands [i](#)

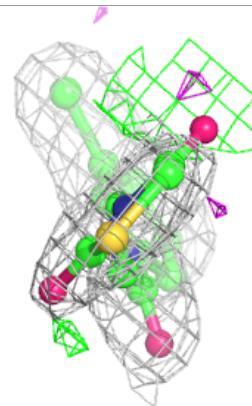
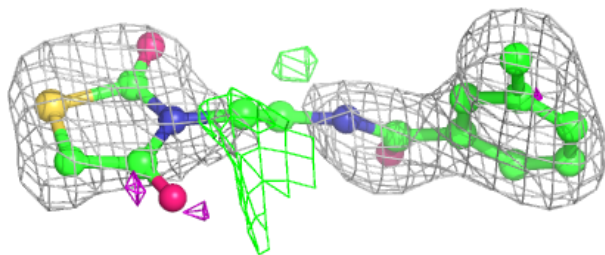
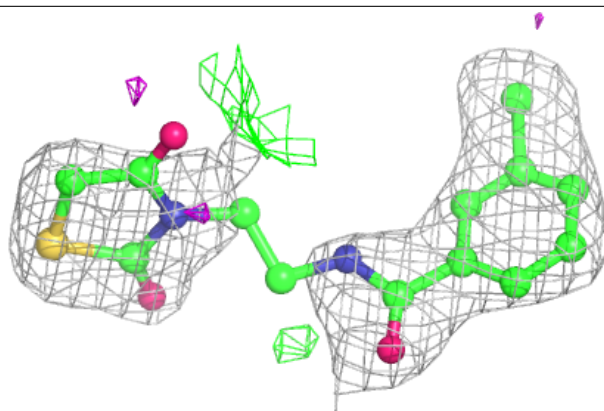
In the following table, the Atoms column lists the number of modelled atoms in the group and the number defined in the chemical component dictionary. The B-factors column lists the minimum, median, 95th percentile and maximum values of B factors of atoms in the group. The column labelled 'Q< 0.9' lists the number of atoms with occupancy less than 0.9.

Mol	Type	Chain	Res	Atoms	RSCC	RSR	B-factors(Å ²)	Q<0.9
2	EDO	AAA	501	4/4	0.74	0.16	47,51,58,59	0
3	T4H	BBB	501	19/19	0.90	0.18	47,58,80,87	0
2	EDO	AAA	502	4/4	0.96	0.11	42,42,43,44	0

The following is a graphical depiction of the model fit to experimental electron density of all instances of the Ligand of Interest. In addition, ligands with molecular weight > 250 and outliers as shown on the geometry validation Tables will also be included. Each fit is shown from different orientation to approximate a three-dimensional view.

Electron density around T4H BBB 501:

2mF_o-DF_c (at 0.7 rmsd) in gray
mF_o-DF_c (at 3 rmsd) in purple (negative)
and green (positive)



6.5 Other polymers [i](#)

There are no such residues in this entry.