



wwPDB X-ray Structure Validation Summary Report ⓘ

May 30, 2020 – 02:13 pm BST

PDB ID : 1BDM
Title : THE STRUCTURE AT 1.8 ANGSTROMS RESOLUTION OF A SINGLE SITE MUTANT (T189I) OF MALATE DEHYDROGENASE FROM THERMUS FLAVUS WITH INCREASED ENZYMATIC ACTIVITY
Authors : Kelly, C.A.; Birktoft, J.J.
Deposited on : 1993-02-16
Resolution : 1.80 Å(reported)

This is a wwPDB X-ray Structure Validation Summary Report for a publicly released PDB entry.

We welcome your comments at validation@mail.wwpdb.org

A user guide is available at

<https://www.wwpdb.org/validation/2017/XrayValidationReportHelp>

with specific help available everywhere you see the ⓘ symbol.

The following versions of software and data (see [references ⓘ](#)) were used in the production of this report:

MolProbity : 4.02b-467
Mogul : 1.8.5 (274361), CSD as541be (2020)
Xtriage (Phenix) : **NOT EXECUTED**
EDS : **NOT EXECUTED**
buster-report : 1.1.7 (2018)
Percentile statistics : 20191225.v01 (using entries in the PDB archive December 25th 2019)
Ideal geometry (proteins) : Engh & Huber (2001)
Ideal geometry (DNA, RNA) : Parkinson et al. (1996)
Validation Pipeline (wwPDB-VP) : 2.11

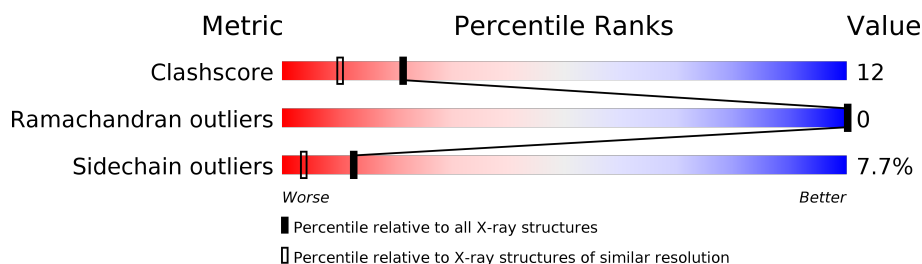
1 Overall quality at a glance

The following experimental techniques were used to determine the structure:

X-RAY DIFFRACTION

The reported resolution of this entry is 1.80 Å.

Percentile scores (ranging between 0-100) for global validation metrics of the entry are shown in the following graphic. The table shows the number of entries on which the scores are based.



Metric	Whole archive (#Entries)	Similar resolution (#Entries, resolution range(Å))
Clashscore	141614	6793 (1.80-1.80)
Ramachandran outliers	138981	6697 (1.80-1.80)
Sidechain outliers	138945	6696 (1.80-1.80)

The table below summarises the geometric issues observed across the polymeric chains and their fit to the electron density. The red, orange, yellow and green segments on the lower bar indicate the fraction of residues that contain outliers for ≥ 3 , 2, 1 and 0 types of geometric quality criteria respectively. A grey segment represents the fraction of residues that are not modelled. The numeric value for each fraction is indicated below the corresponding segment, with a dot representing fractions $\leq 5\%$.

Note EDS was not executed.

Mol	Chain	Length	Quality of chain
1	A	327	
1	B	327	

2 Entry composition [i](#)

There are 3 unique types of molecules in this entry. The entry contains 5197 atoms, of which 0 are hydrogens and 0 are deuteriums.

In the tables below, the ZeroOcc column contains the number of atoms modelled with zero occupancy, the AltConf column contains the number of residues with at least one atom in alternate conformation and the Trace column contains the number of residues modelled with at most 2 atoms.

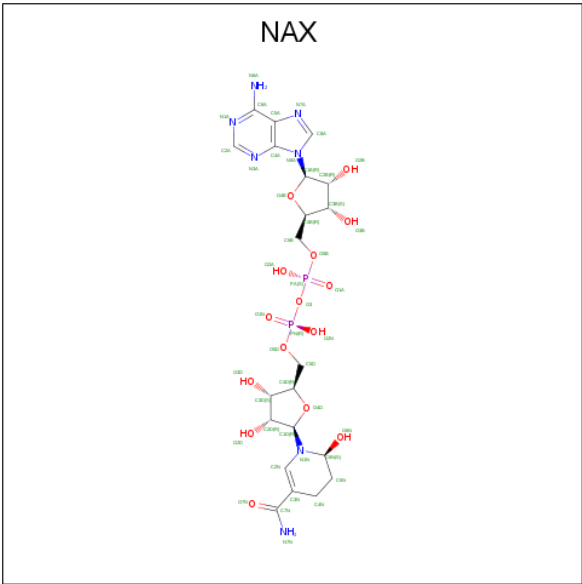
- Molecule 1 is a protein called MALATE DEHYDROGENASE.

Mol	Chain	Residues	Atoms					ZeroOcc	AltConf	Trace
1	A	318	Total	C	N	O	S	0	1	1
			2411	1530	417	452	12			
1	B	327	Total	C	N	O	S	0	1	0
			2494	1579	436	466	13			

There are 4 discrepancies between the modelled and reference sequences:

Chain	Residue	Modelled	Actual	Comment	Reference
A	74	ASP	LYS	CONFLICT	UNP P10584
A	189	ILE	THR	CONFLICT	UNP P10584
B	74	ASP	LYS	CONFLICT	UNP P10584
B	189	ILE	THR	CONFLICT	UNP P10584

- Molecule 2 is BETA-6-HYDROXY-1,4,5,6-TETRHYDRONICOTINAMIDE ADENINE DINUCLEOTIDE (three-letter code: NAX) (formula: C₂₁H₃₁N₇O₁₅P₂).



Mol	Chain	Residues	Atoms					ZeroOcc	AltConf
2	A	1	Total 45	C 21	N 7	O 15	P 2	0	0
2	B	1	Total 45	C 21	N 7	O 15	P 2	0	0

- Molecule 3 is water.

Mol	Chain	Residues	Atoms		ZeroOcc	AltConf
3	A	90	Total 90	O 90	0	0
3	B	112	Total 112	O 112	0	0

4 Data and refinement statistics

Xtriage (Phenix) and EDS were not executed - this section is therefore incomplete.

Property	Value	Source
Space group	P 21 21 21	Depositor
Cell constants a, b, c, α , β , γ	71.75Å 88.64Å 118.97Å 90.00° 90.00° 90.00°	Depositor
Resolution (Å)	(Not available) – 1.80	Depositor
% Data completeness (in resolution range)	(Not available) ((Not available)-1.80)	Depositor
R_{merge}	(Not available)	Depositor
R_{sym}	(Not available)	Depositor
Refinement program	X-PLOR	Depositor
R, R_{free}	0.169 , (Not available)	Depositor
Estimated twinning fraction	No twinning to report.	Xtriage
Total number of atoms	5197	wwPDB-VP
Average B, all atoms (Å ²)	29.0	wwPDB-VP

5 Model quality ⓘ

5.1 Standard geometry ⓘ

Bond lengths and bond angles in the following residue types are not validated in this section: NAX

The Z score for a bond length (or angle) is the number of standard deviations the observed value is removed from the expected value. A bond length (or angle) with $|Z| > 5$ is considered an outlier worth inspection. RMSZ is the root-mean-square of all Z scores of the bond lengths (or angles).

Mol	Chain	Bond lengths		Bond angles	
		RMSZ	$\# Z > 5$	RMSZ	$\# Z > 5$
1	A	1.03	20/2447 (0.8%)	1.53	39/3316 (1.2%)
1	B	1.05	22/2532 (0.9%)	1.53	36/3428 (1.1%)
All	All	1.04	42/4979 (0.8%)	1.53	75/6744 (1.1%)

The worst 5 of 42 bond length outliers are listed below:

Mol	Chain	Res	Type	Atoms	Z	Observed(Å)	Ideal(Å)
1	B	68	GLU	CD-OE1	8.01	1.34	1.25
1	A	210	GLU	CD-OE1	7.86	1.34	1.25
1	B	313	GLU	CD-OE1	7.85	1.34	1.25
1	A	110	GLU	CD-OE1	7.63	1.34	1.25
1	A	306	GLU	CD-OE2	7.58	1.33	1.25

The worst 5 of 75 bond angle outliers are listed below:

Mol	Chain	Res	Type	Atoms	Z	Observed(°)	Ideal(°)
1	B	149	ARG	NE-CZ-NH2	11.17	125.89	120.30
1	A	74	ASP	CB-CG-OD1	-10.06	109.24	118.30
1	A	215	MET	CG-SD-CE	-9.52	84.97	100.20
1	B	149	ARG	NE-CZ-NH1	-9.11	115.74	120.30
1	A	200	ASP	CB-CG-OD1	-8.89	110.30	118.30

There are no chirality outliers.

There are no planarity outliers.

5.2 Too-close contacts ⓘ

In the following table, the Non-H and H(model) columns list the number of non-hydrogen atoms and hydrogen atoms in the chain respectively. The H(added) column lists the number of hydrogen

atoms added and optimized by MolProbity. The Clashes column lists the number of clashes within the asymmetric unit, whereas Symm-Clashes lists symmetry related clashes.

Mol	Chain	Non-H	H(model)	H(added)	Clashes	Symm-Clashes
1	A	2411	0	2433	62	0
1	B	2494	0	2524	59	0
2	A	45	0	29	3	0
2	B	45	0	29	2	0
3	A	90	0	0	5	0
3	B	112	0	0	4	0
All	All	5197	0	5015	120	0

The all-atom clashscore is defined as the number of clashes found per 1000 atoms (including hydrogen atoms). The all-atom clashscore for this structure is 12.

The worst 5 of 120 close contacts within the same asymmetric unit are listed below, sorted by their clash magnitude.

Atom-1	Atom-2	Interatomic distance (Å)	Clash overlap (Å)
1:A:89:ALA:H	1:A:104:ASN:HD21	1.06	0.98
1:B:280:PRO:HG2	1:B:320:LEU:HD21	1.55	0.88
1:A:44:GLN:HA	1:A:44:GLN:HE21	1.40	0.86
1:A:89:ALA:HB2	1:A:103:VAL:HG22	1.60	0.84
1:A:89:ALA:H	1:A:104:ASN:ND2	1.75	0.84

There are no symmetry-related clashes.

5.3 Torsion angles [i](#)

5.3.1 Protein backbone [i](#)

In the following table, the Percentiles column shows the percent Ramachandran outliers of the chain as a percentile score with respect to all X-ray entries followed by that with respect to entries of similar resolution.

The Analysed column shows the number of residues for which the backbone conformation was analysed, and the total number of residues.

Mol	Chain	Analysed	Favoured	Allowed	Outliers	Percentiles	
1	A	314/327 (96%)	309 (98%)	5 (2%)	0	100	100
1	B	326/327 (100%)	324 (99%)	2 (1%)	0	100	100
All	All	640/654 (98%)	633 (99%)	7 (1%)	0	100	100

There are no Ramachandran outliers to report.

5.3.2 Protein sidechains ⓘ

In the following table, the Percentiles column shows the percent sidechain outliers of the chain as a percentile score with respect to all X-ray entries followed by that with respect to entries of similar resolution.

The Analysed column shows the number of residues for which the sidechain conformation was analysed, and the total number of residues.

Mol	Chain	Analysed	Rotameric	Outliers	Percentiles	
1	A	243/252 (96%)	219 (90%)	24 (10%)	8	2
1	B	251/252 (100%)	237 (94%)	14 (6%)	21	8
All	All	494/504 (98%)	456 (92%)	38 (8%)	13	4

5 of 38 residues with a non-rotameric sidechain are listed below:

Mol	Chain	Res	Type
1	A	279	ILE
1	A	310	LYS
1	B	320	LEU
1	A	306	GLU
1	A	317	GLN

Some sidechains can be flipped to improve hydrogen bonding and reduce clashes. 5 of 14 such sidechains are listed below:

Mol	Chain	Res	Type
1	A	252	HIS
1	A	273	GLN
1	B	159	HIS
1	A	196	HIS
1	B	147	ASN

5.3.3 RNA ⓘ

There are no RNA molecules in this entry.

5.4 Non-standard residues in protein, DNA, RNA chains ⓘ

There are no non-standard protein/DNA/RNA residues in this entry.

5.5 Carbohydrates [i](#)

There are no carbohydrates in this entry.

5.6 Ligand geometry [i](#)

2 ligands are modelled in this entry.

In the following table, the Counts columns list the number of bonds (or angles) for which Mogul statistics could be retrieved, the number of bonds (or angles) that are observed in the model and the number of bonds (or angles) that are defined in the Chemical Component Dictionary. The Link column lists molecule types, if any, to which the group is linked. The Z score for a bond length (or angle) is the number of standard deviations the observed value is removed from the expected value. A bond length (or angle) with $|Z| > 2$ is considered an outlier worth inspection. RMSZ is the root-mean-square of all Z scores of the bond lengths (or angles).

Mol	Type	Chain	Res	Link	Bond lengths			Bond angles		
					Counts	RMSZ	# $ Z > 2$	Counts	RMSZ	# $ Z > 2$
2	NAX	B	334	-	42,49,49	1.03	2 (4%)	47,75,75	1.50	5 (10%)
2	NAX	A	334	-	42,49,49	0.84	1 (2%)	47,75,75	1.29	6 (12%)

In the following table, the Chirals column lists the number of chiral outliers, the number of chiral centers analysed, the number of these observed in the model and the number defined in the Chemical Component Dictionary. Similar counts are reported in the Torsion and Rings columns. '-' means no outliers of that kind were identified.

Mol	Type	Chain	Res	Link	Chirals	Torsions	Rings
2	NAX	B	334	-	-	5/25/75/75	0/5/5/5
2	NAX	A	334	-	-	6/25/75/75	0/5/5/5

All (3) bond length outliers are listed below:

Mol	Chain	Res	Type	Atoms	Z	Observed(Å)	Ideal(Å)
2	B	334	NAX	O6N-C6N	3.49	1.47	1.41
2	A	334	NAX	O6N-C6N	3.14	1.46	1.41
2	B	334	NAX	C2N-C3N	2.51	1.42	1.34

The worst 5 of 11 bond angle outliers are listed below:

Mol	Chain	Res	Type	Atoms	Z	Observed(°)	Ideal(°)
2	B	334	NAX	O6N-C6N-N1N	-4.13	99.78	110.33
2	B	334	NAX	O4B-C1B-C2B	-4.09	100.94	106.93
2	B	334	NAX	C4A-C5A-N7A	3.70	113.25	109.40

Continued on next page...

Continued from previous page...

Mol	Chain	Res	Type	Atoms	Z	Observed(°)	Ideal(°)
2	A	334	NAX	O6N-C6N-N1N	-3.41	101.61	110.33
2	B	334	NAX	O4D-C1D-C2D	-3.29	99.47	106.64

There are no chirality outliers.

5 of 11 torsion outliers are listed below:

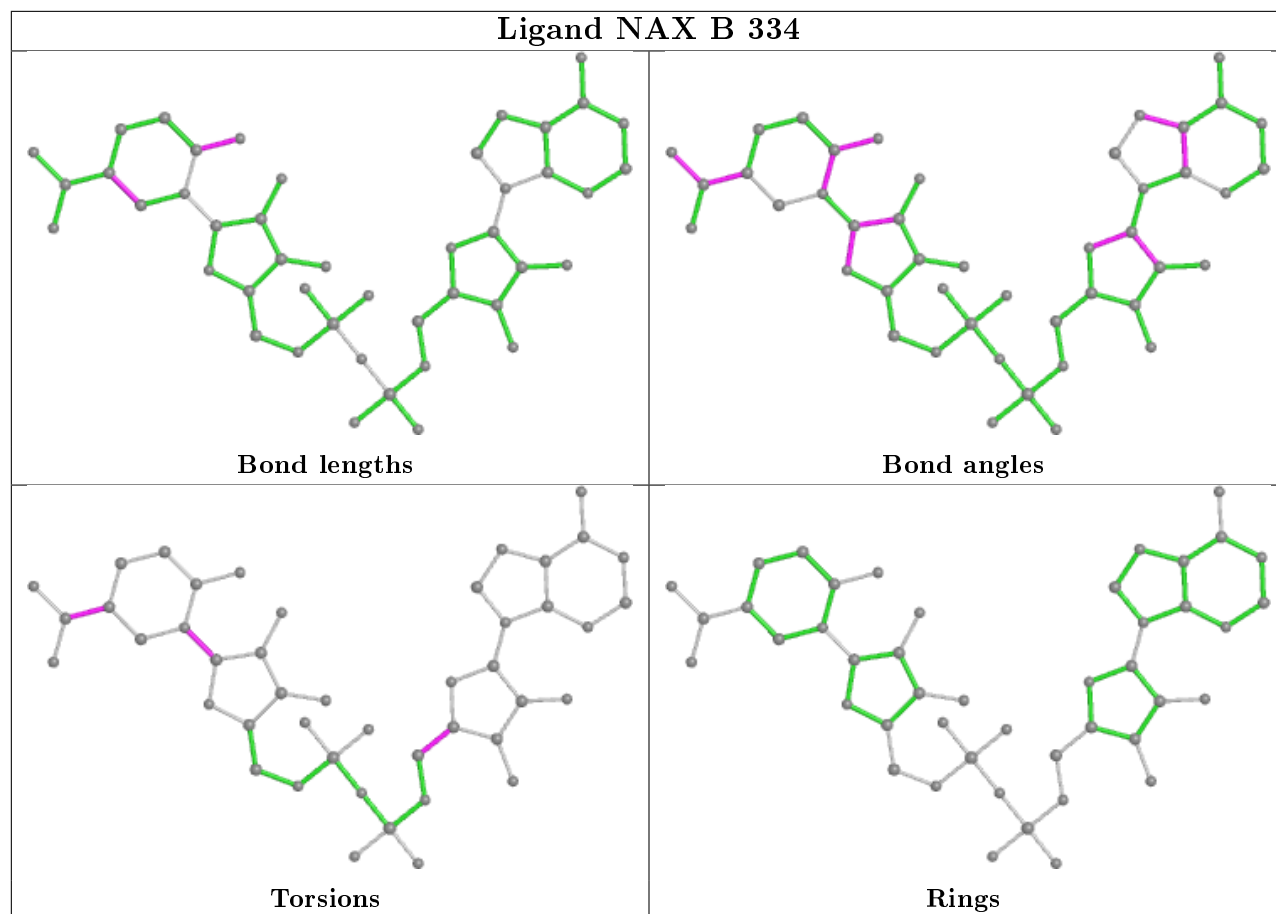
Mol	Chain	Res	Type	Atoms
2	A	334	NAX	PN-O3-PA-O1A
2	B	334	NAX	C2D-C1D-N1N-C2N
2	A	334	NAX	C2D-C1D-N1N-C2N
2	B	334	NAX	O4D-C1D-N1N-C2N
2	A	334	NAX	O4D-C1D-N1N-C2N

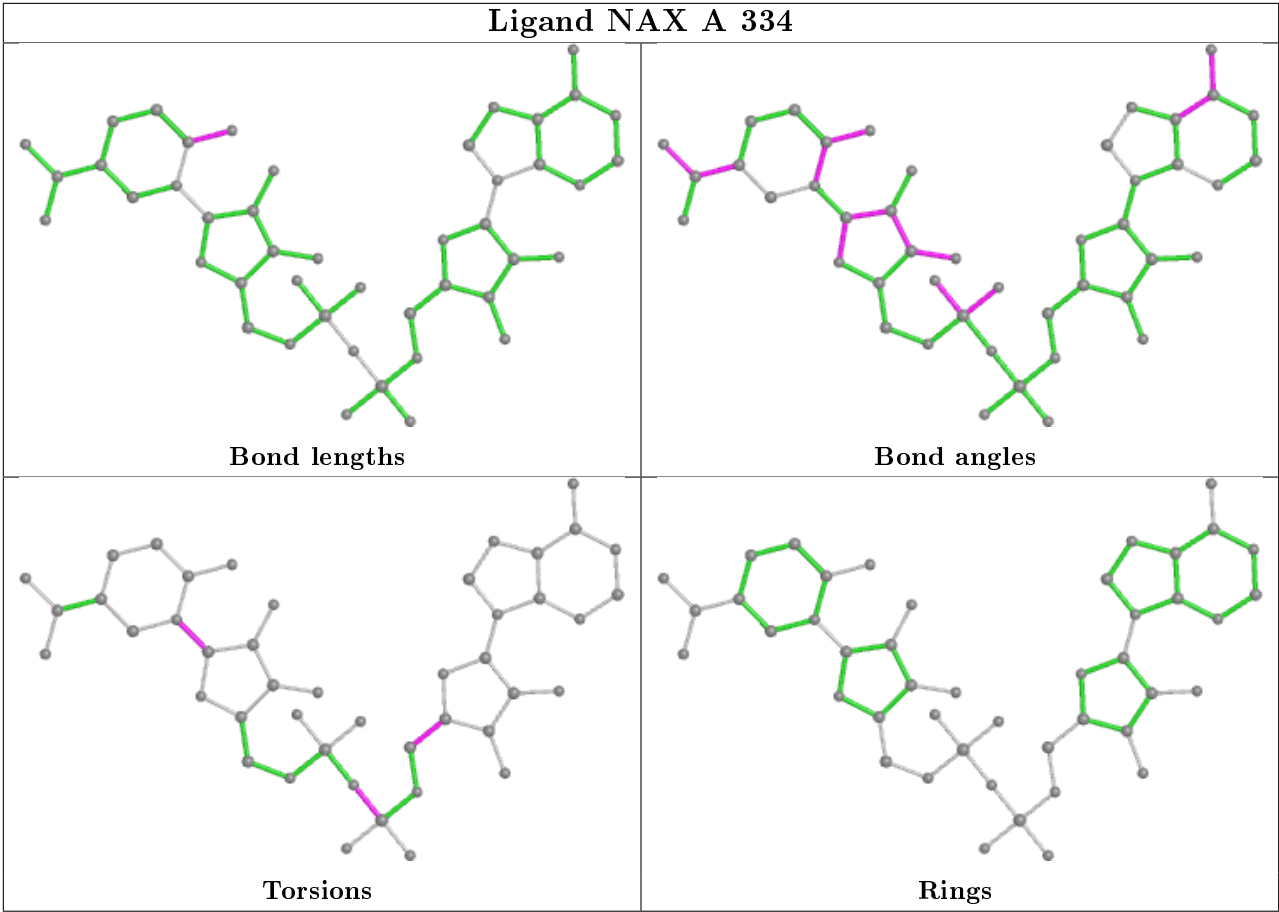
There are no ring outliers.

2 monomers are involved in 5 short contacts:

Mol	Chain	Res	Type	Clashes	Symm-Clashes
2	B	334	NAX	2	0
2	A	334	NAX	3	0

The following is a two-dimensional graphical depiction of Mogul quality analysis of bond lengths, bond angles, torsion angles, and ring geometry for all instances of the Ligand of Interest. In addition, ligands with molecular weight > 250 and outliers as shown on the validation Tables will also be included. For torsion angles, if less than 5% of the Mogul distribution of torsion angles is within 10 degrees of the torsion angle in question, then that torsion angle is considered an outlier. Any bond that is central to one or more torsion angles identified as an outlier by Mogul will be highlighted in the graph. For rings, the root-mean-square deviation (RMSD) between the ring in question and similar rings identified by Mogul is calculated over all ring torsion angles. If the average RMSD is greater than 60 degrees and the minimal RMSD between the ring in question and any Mogul-identified rings is also greater than 60 degrees, then that ring is considered an outlier. The outliers are highlighted in purple. The color gray indicates Mogul did not find sufficient equivalents in the CSD to analyse the geometry.





5.7 Other polymers ⓘ

There are no such residues in this entry.

5.8 Polymer linkage issues ⓘ

The following chains have linkage breaks:

Mol	Chain	Number of breaks
1	A	1

All chain breaks are listed below:

Model	Chain	Residue-1	Atom-1	Residue-2	Atom-2	Distance (Å)
1	A	90:PRO	C	91:ARG	N	2.48

6 Fit of model and data ⓘ

6.1 Protein, DNA and RNA chains ⓘ

EDS was not executed - this section is therefore empty.

6.2 Non-standard residues in protein, DNA, RNA chains ⓘ

EDS was not executed - this section is therefore empty.

6.3 Carbohydrates ⓘ

EDS was not executed - this section is therefore empty.

6.4 Ligands ⓘ

EDS was not executed - this section is therefore empty.

6.5 Other polymers ⓘ

EDS was not executed - this section is therefore empty.