



# wwPDB X-ray Structure Validation Summary Report ⓘ

May 25, 2020 – 11:58 am BST

PDB ID : 4BEW  
Title : SERCA bound to phosphate analogue  
Authors : Drachmann, N.D.; Mattle, D.; Laursen, M.; Bublitz, M.; Olesen, C.; Moeller, J.V.; Nissen, P.; Morth, J.P.  
Deposited on : 2013-03-12  
Resolution : 2.50 Å(reported)

This is a wwPDB X-ray Structure Validation Summary Report for a publicly released PDB entry.

We welcome your comments at [validation@mail.wwpdb.org](mailto:validation@mail.wwpdb.org)

A user guide is available at

<https://www.wwpdb.org/validation/2017/XrayValidationReportHelp>

with specific help available everywhere you see the ⓘ symbol.

---

The following versions of software and data (see [references ⓘ](#)) were used in the production of this report:

MolProbity : 4.02b-467  
Mogul : 1.8.5 (274361), CSD as541be (2020)  
Xtriage (Phenix) : 1.13  
EDS : 2.11  
buster-report : 1.1.7 (2018)  
Percentile statistics : 20191225.v01 (using entries in the PDB archive December 25th 2019)  
Refmac : 5.8.0158  
CCP4 : 7.0.044 (Gargrove)  
Ideal geometry (proteins) : Engh & Huber (2001)  
Ideal geometry (DNA, RNA) : Parkinson et al. (1996)  
Validation Pipeline (wwPDB-VP) : 2.11

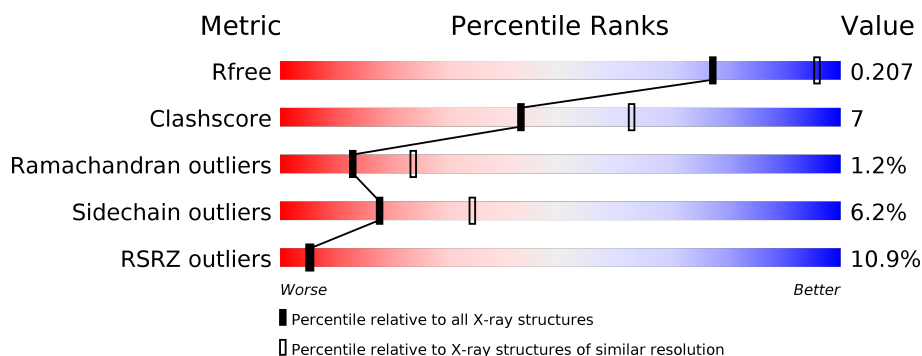
# 1 Overall quality at a glance ⓘ

The following experimental techniques were used to determine the structure:

## *X-RAY DIFFRACTION*

The reported resolution of this entry is 2.50 Å.

Percentile scores (ranging between 0-100) for global validation metrics of the entry are shown in the following graphic. The table shows the number of entries on which the scores are based.



Metric	Whole archive (#Entries)	Similar resolution (#Entries, resolution range(Å))
$R_{free}$	130704	4661 (2.50-2.50)
Clashscore	141614	5346 (2.50-2.50)
Ramachandran outliers	138981	5231 (2.50-2.50)
Sidechain outliers	138945	5233 (2.50-2.50)
RSRZ outliers	127900	4559 (2.50-2.50)

The table below summarises the geometric issues observed across the polymeric chains and their fit to the electron density. The red, orange, yellow and green segments on the lower bar indicate the fraction of residues that contain outliers for  $\geq 3$ , 2, 1 and 0 types of geometric quality criteria respectively. A grey segment represents the fraction of residues that are not modelled. The numeric value for each fraction is indicated below the corresponding segment, with a dot representing fractions  $\leq 5\%$ . The upper red bar (where present) indicates the fraction of residues that have poor fit to the electron density. The numeric value is given above the bar.

Mol	Chain	Length	Quality of chain
1	A	994	<div> <div>14%</div> <div> <div></div> <div>77%</div> <div>20%</div> <div>.</div> </div> </div>
1	B	994	<div> <div>8%</div> <div> <div></div> <div>80%</div> <div>18%</div> <div>.</div> </div> </div>

## 2 Entry composition

There are 9 unique types of molecules in this entry. The entry contains 15950 atoms, of which 0 are hydrogens and 0 are deuteriums.

In the tables below, the ZeroOcc column contains the number of atoms modelled with zero occupancy, the AltConf column contains the number of residues with at least one atom in alternate conformation and the Trace column contains the number of residues modelled with at most 2 atoms.

- Molecule 1 is a protein called SARCOPLASMIC/ENDOPLASMIC RETICULUM CALCIUM ATPASE 1.

Mol	Chain	Residues	Atoms					ZeroOcc	AltConf	Trace
1	A	994	Total	C	N	O	S	0	0	0
			7670	4876	1287	1450	57			
1	B	994	Total	C	N	O	S	0	0	0
			7670	4876	1287	1450	57			

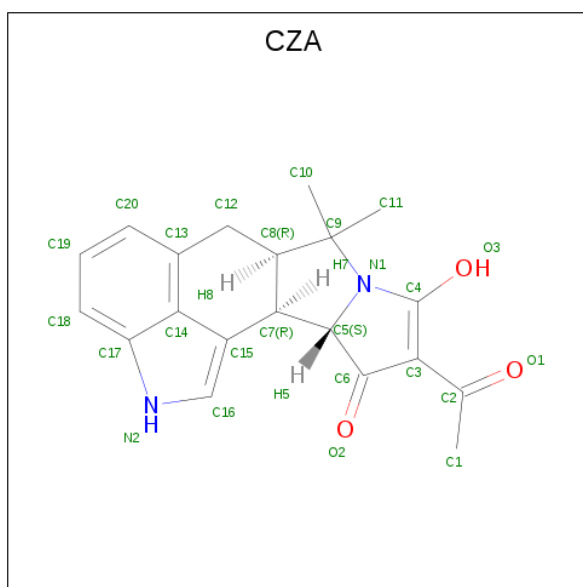
- Molecule 2 is MAGNESIUM ION (three-letter code: MG) (formula: Mg).

Mol	Chain	Residues	Atoms		ZeroOcc	AltConf
2	B	1	Total	Mg	0	0
			1	1		
2	A	1	Total	Mg	0	0
			1	1		

- Molecule 3 is POTASSIUM ION (three-letter code: K) (formula: K).

Mol	Chain	Residues	Atoms		ZeroOcc	AltConf
3	B	1	Total	K	0	0
			1	1		
3	A	1	Total	K	0	0
			1	1		

- Molecule 4 is (6AR,11AS,11BR)-10-ACETYL-9-HYDROXY-7,7-DIMETHYL-2,6,6A,7,11A,11B-HEXAHYDRO-11H-PYRROLO[1',2':2,3]ISOINDOLO[4,5,6-CD]INDOL-11-ONE (three-letter code: CZA) (formula: C<sub>20</sub>H<sub>20</sub>N<sub>2</sub>O<sub>3</sub>).

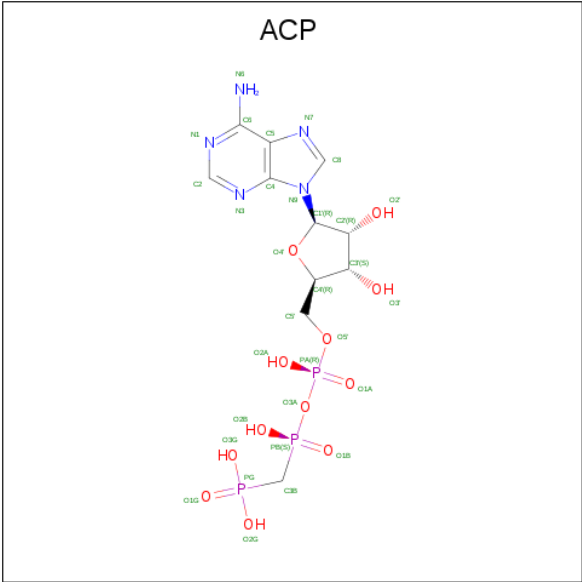


Mol	Chain	Residues	Atoms				ZeroOcc	AltConf
4	A	1	Total	C	N	O	0	0
			25	20	2	3		
4	B	1	Total	C	N	O	0	0
			25	20	2	3		

- Molecule 5 is MANGANESE (II) ION (three-letter code: MN) (formula: Mn).

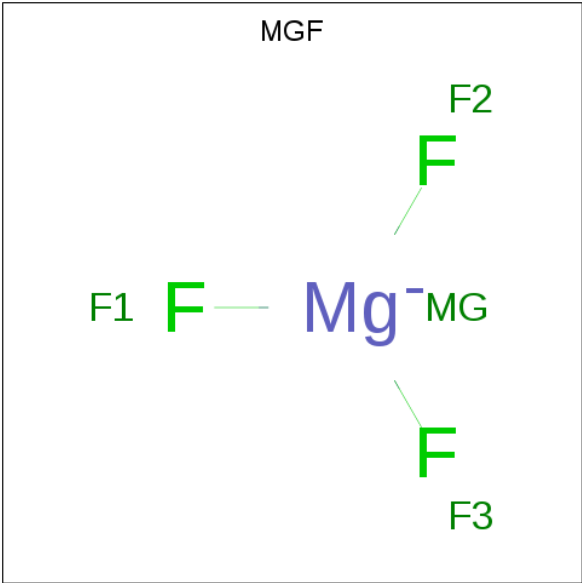
Mol	Chain	Residues	Atoms		ZeroOcc	AltConf
5	B	1	Total	Mn	0	0
			1	1		
5	A	2	Total	Mn	0	0
			2	2		

- Molecule 6 is PHOSPHOMETHYLPHOSPHONIC ACID ADENYLATE ESTER (three-letter code: ACP) (formula: C<sub>11</sub>H<sub>18</sub>N<sub>5</sub>O<sub>12</sub>P<sub>3</sub>).



Mol	Chain	Residues	Atoms					ZeroOcc	AltConf
6	A	1	Total	C	N	O	P	0	0
			31	11	5	12	3		
6	B	1	Total	C	N	O	P	0	0
			31	11	5	12	3		

- Molecule 7 is TRIFLUOROMAGNESATE (three-letter code: MGF) (formula: F<sub>3</sub>Mg).



Mol	Chain	Residues	Atoms			ZeroOcc	AltConf
7	A	1	Total	F	Mg	0	0
			4	3	1		
7	B	1	Total	F	Mg	0	0
			4	3	1		

- Molecule 8 is ACETATE ION (three-letter code: ACT) (formula:  $C_2H_3O_2$ ).



Mol	Chain	Residues	Atoms			ZeroOcc	AltConf
8	A	1	Total	C	O	0	0
			4	2	2		
8	A	1	Total	C	O	0	0
			4	2	2		
8	B	1	Total	C	O	0	0
			4	2	2		
8	B	1	Total	C	O	0	0
			4	2	2		

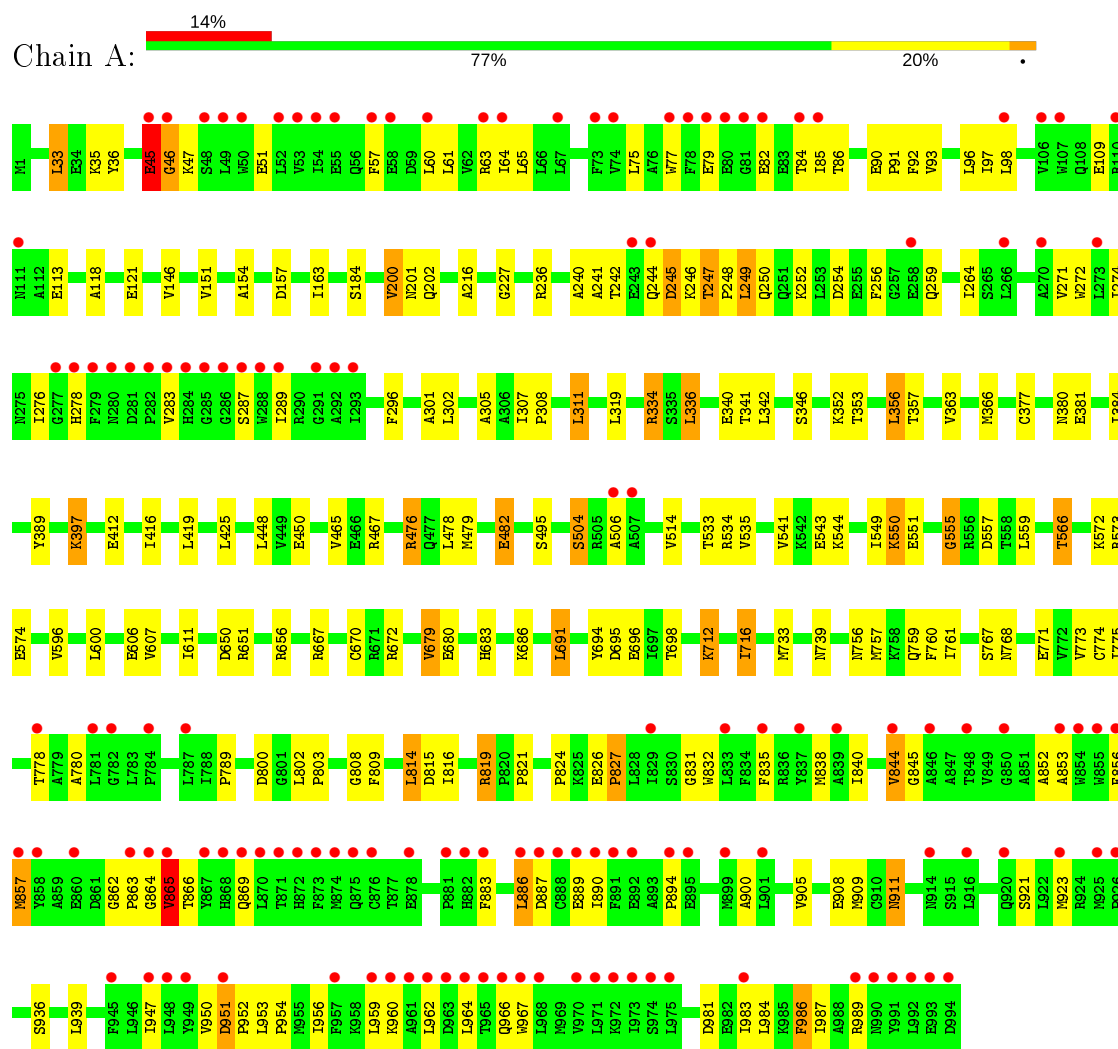
- Molecule 9 is water.

Mol	Chain	Residues	Atoms		ZeroOcc	AltConf
9	A	268	Total	O	0	0
			268	268		
9	B	199	Total	O	0	0
			199	199		

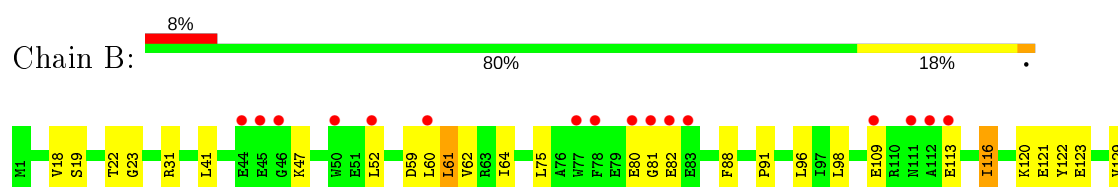
### 3 Residue-property plots

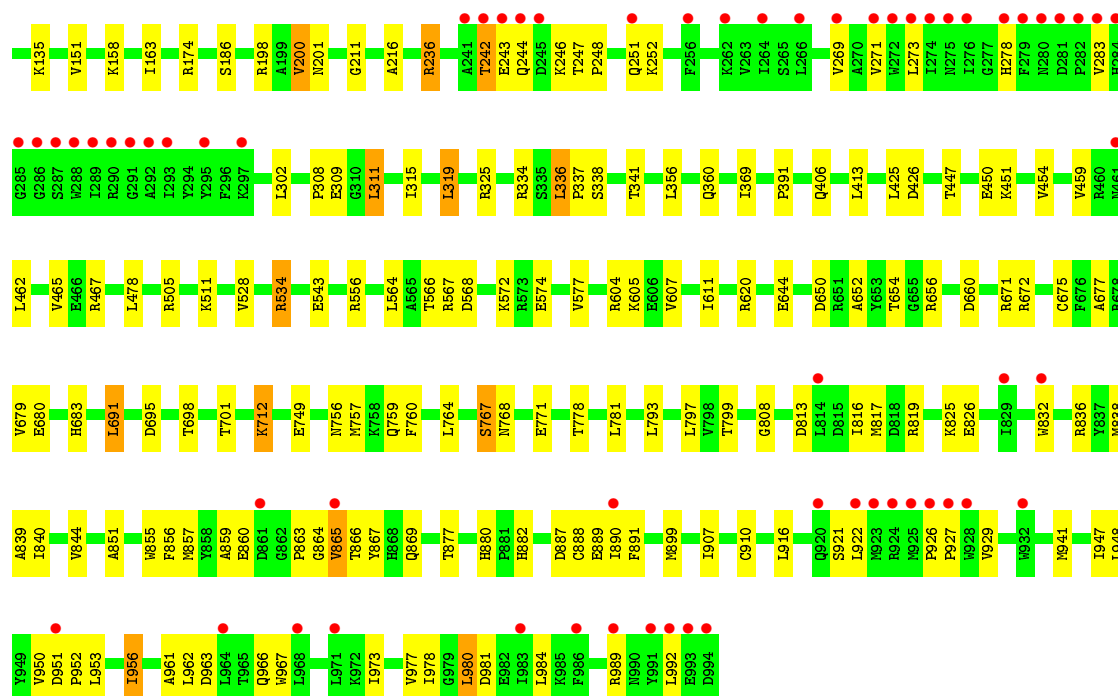
These plots are drawn for all protein, RNA and DNA chains in the entry. The first graphic for a chain summarises the proportions of the various outlier classes displayed in the second graphic. The second graphic shows the sequence view annotated by issues in geometry and electron density. Residues are color-coded according to the number of geometric quality criteria for which they contain at least one outlier: green = 0, yellow = 1, orange = 2 and red = 3 or more. A red dot above a residue indicates a poor fit to the electron density ( $RSRZ > 2$ ). Stretches of 2 or more consecutive residues without any outlier are shown as a green connector. Residues present in the sample, but not in the model, are shown in grey.

- Molecule 1: SARCOPLASMIC/ENDOPLASMIC RETICULUM CALCIUM ATPASE 1



- Molecule 1: SARCOPLASMIC/ENDOPLASMIC RETICULUM CALCIUM ATPASE 1







## 4 Data and refinement statistics

Property	Value	Source
Space group	P 21 21 21	Depositor
Cell constants a, b, c, $\alpha$ , $\beta$ , $\gamma$	101.43Å 108.87Å 274.31Å 90.00° 90.00° 90.00°	Depositor
Resolution (Å)	45.97 – 2.50 45.97 – 2.50	Depositor EDS
% Data completeness (in resolution range)	97.5 (45.97-2.50) 97.6 (45.97-2.50)	Depositor EDS
$R_{merge}$	0.58	Depositor
$R_{sym}$	(Not available)	Depositor
$\langle I/\sigma(I) \rangle$ <sup>1</sup>	2.60 (at 2.51Å)	Xtriage
Refinement program	PHENIX (PHENIX.REFINE)	Depositor
R, $R_{free}$	0.169 , 0.207 0.169 , 0.207	Depositor DCC
$R_{free}$ test set	3075 reflections (2.98%)	wwPDB-VP
Wilson B-factor (Å <sup>2</sup> )	52.0	Xtriage
Anisotropy	0.216	Xtriage
Bulk solvent $k_{sol}$ (e/Å <sup>3</sup> ), $B_{sol}$ (Å <sup>2</sup> )	0.29 , 60.7	EDS
L-test for twinning <sup>2</sup>	$\langle  L  \rangle = 0.47$ , $\langle L^2 \rangle = 0.31$	Xtriage
Estimated twinning fraction	No twinning to report.	Xtriage
$F_o, F_c$ correlation	0.96	EDS
Total number of atoms	15950	wwPDB-VP
Average B, all atoms (Å <sup>2</sup> )	86.0	wwPDB-VP

Xtriage's analysis on translational NCS is as follows: *The largest off-origin peak in the Patterson function is 2.34% of the height of the origin peak. No significant pseudotranslation is detected.*

<sup>1</sup>Intensities estimated from amplitudes.

<sup>2</sup>Theoretical values of  $\langle |L| \rangle$ ,  $\langle L^2 \rangle$  for acentric reflections are 0.5, 0.333 respectively for untwinned datasets, and 0.375, 0.2 for perfectly twinned datasets.

## 5 Model quality [i](#)

### 5.1 Standard geometry [i](#)

Bond lengths and bond angles in the following residue types are not validated in this section: MG, MGF, K, MN, ACP, ACT, CZA

The Z score for a bond length (or angle) is the number of standard deviations the observed value is removed from the expected value. A bond length (or angle) with  $|Z| > 5$  is considered an outlier worth inspection. RMSZ is the root-mean-square of all Z scores of the bond lengths (or angles).

Mol	Chain	Bond lengths		Bond angles	
		RMSZ	$\# Z  > 5$	RMSZ	$\# Z  > 5$
1	A	0.41	0/7811	0.58	1/10592 (0.0%)
1	B	0.40	0/7811	0.57	1/10592 (0.0%)
All	All	0.41	0/15622	0.58	2/21184 (0.0%)

Chiral center outliers are detected by calculating the chiral volume of a chiral center and verifying if the center is modelled as a planar moiety or with the opposite hand. A planarity outlier is detected by checking planarity of atoms in a peptide group, atoms in a mainchain group or atoms of a sidechain that are expected to be planar.

Mol	Chain	#Chirality outliers	#Planarity outliers
1	A	0	1

There are no bond length outliers.

All (2) bond angle outliers are listed below:

Mol	Chain	Res	Type	Atoms	Z	Observed( $^{\circ}$ )	Ideal( $^{\circ}$ )
1	B	567	ARG	NE-CZ-NH2	-5.30	117.65	120.30
1	A	476	ARG	NE-CZ-NH2	-5.03	117.79	120.30

There are no chirality outliers.

All (1) planarity outliers are listed below:

Mol	Chain	Res	Type	Group
1	A	555	GLY	Peptide

### 5.2 Too-close contacts [i](#)

In the following table, the Non-H and H(model) columns list the number of non-hydrogen atoms and hydrogen atoms in the chain respectively. The H(added) column lists the number of hydrogen

atoms added and optimized by MolProbity. The Clashes column lists the number of clashes within the asymmetric unit, whereas Symm-Clashes lists symmetry related clashes.

Mol	Chain	Non-H	H(model)	H(added)	Clashes	Symm-Clashes
1	A	7670	0	7762	114	0
1	B	7670	0	7762	97	0
2	A	1	0	0	0	0
2	B	1	0	0	0	0
3	A	1	0	0	0	0
3	B	1	0	0	0	0
4	A	25	0	20	2	0
4	B	25	0	20	2	0
5	A	2	0	0	0	0
5	B	1	0	0	0	0
6	A	31	0	14	0	0
6	B	31	0	14	0	0
7	A	4	0	0	0	0
7	B	4	0	0	0	0
8	A	8	0	6	2	0
8	B	8	0	6	2	0
9	A	268	0	0	3	0
9	B	199	0	0	2	0
All	All	15950	0	15604	211	0

The all-atom clashscore is defined as the number of clashes found per 1000 atoms (including hydrogen atoms). The all-atom clashscore for this structure is 7.

The worst 5 of 211 close contacts within the same asymmetric unit are listed below, sorted by their clash magnitude.

Atom-1	Atom-2	Interatomic distance (Å)	Clash overlap (Å)
1:A:894:PRO:HB2	1:A:960:LYS:HB2	1.61	0.81
1:A:216:ALA:HB1	8:A:3001:ACT:H2	1.64	0.79
1:B:61:LEU:HD12	4:B:1005:CZA:H8	1.69	0.75
1:B:869:GLN:NE2	1:B:882:HIS:O	2.20	0.71
1:A:249:LEU:HD13	1:A:757:MET:HE2	1.72	0.69

There are no symmetry-related clashes.

## 5.3 Torsion angles

### 5.3.1 Protein backbone

In the following table, the Percentiles column shows the percent Ramachandran outliers of the chain as a percentile score with respect to all X-ray entries followed by that with respect to entries of similar resolution.

The Analysed column shows the number of residues for which the backbone conformation was analysed, and the total number of residues.

Mol	Chain	Analysed	Favoured	Allowed	Outliers	Percentiles	
1	A	992/994 (100%)	925 (93%)	52 (5%)	15 (2%)	10	18
1	B	992/994 (100%)	930 (94%)	53 (5%)	9 (1%)	17	31
All	All	1984/1988 (100%)	1855 (94%)	105 (5%)	24 (1%)	13	24

5 of 24 Ramachandran outliers are listed below:

Mol	Chain	Res	Type
1	A	45	GLU
1	A	82	GLU
1	A	504	SER
1	B	243	GLU
1	B	283	VAL

### 5.3.2 Protein sidechains

In the following table, the Percentiles column shows the percent sidechain outliers of the chain as a percentile score with respect to all X-ray entries followed by that with respect to entries of similar resolution.

The Analysed column shows the number of residues for which the sidechain conformation was analysed, and the total number of residues.

Mol	Chain	Analysed	Rotameric	Outliers	Percentiles	
1	A	840/841 (100%)	786 (94%)	54 (6%)	17	33
1	B	840/841 (100%)	789 (94%)	51 (6%)	18	36
All	All	1680/1682 (100%)	1575 (94%)	105 (6%)	18	34

5 of 105 residues with a non-rotameric sidechain are listed below:

Mol	Chain	Res	Type
1	A	865	VAL

*Continued on next page...*

*Continued from previous page...*

Mol	Chain	Res	Type
1	B	61	LEU
1	B	860	GLU
1	A	886	LEU
1	A	986	PHE

Some sidechains can be flipped to improve hydrogen bonding and reduce clashes. All (1) such sidechains are listed below:

Mol	Chain	Res	Type
1	B	868	HIS

### 5.3.3 RNA [i](#)

There are no RNA molecules in this entry.

## 5.4 Non-standard residues in protein, DNA, RNA chains [i](#)

There are no non-standard protein/DNA/RNA residues in this entry.

## 5.5 Carbohydrates [i](#)

There are no carbohydrates in this entry.

## 5.6 Ligand geometry [i](#)

Of 17 ligands modelled in this entry, 7 are monoatomic - leaving 10 for Mogul analysis.

In the following table, the Counts columns list the number of bonds (or angles) for which Mogul statistics could be retrieved, the number of bonds (or angles) that are observed in the model and the number of bonds (or angles) that are defined in the Chemical Component Dictionary. The Link column lists molecule types, if any, to which the group is linked. The Z score for a bond length (or angle) is the number of standard deviations the observed value is removed from the expected value. A bond length (or angle) with  $|Z| > 2$  is considered an outlier worth inspection. RMSZ is the root-mean-square of all Z scores of the bond lengths (or angles).

Mol	Type	Chain	Res	Link	Bond lengths			Bond angles		
					Counts	RMSZ	# $ Z  > 2$	Counts	RMSZ	# $ Z  > 2$
6	ACP	A	1007	5	27,33,33	1.61	5 (18%)	32,52,52	2.07	7 (21%)
8	ACT	B	3001	-	1,3,3	1.39	0	0,3,3	0.00	-
8	ACT	A	3001	-	1,3,3	0.71	0	0,3,3	0.00	-

Mol	Type	Chain	Res	Link	Bond lengths			Bond angles		
					Counts	RMSZ	# Z  > 2	Counts	RMSZ	# Z  > 2
6	ACP	B	1007	-	27,33,33	1.67	6 (22%)	32,52,52	2.07	8 (25%)
8	ACT	A	3002	-	1,3,3	0.41	0	0,3,3	0.00	-
7	MGF	B	1950	9	0,3,3	0.00	-	-	-	-
4	CZA	B	1005	5	27,29,29	1.71	7 (25%)	24,48,48	1.51	5 (20%)
4	CZA	A	1005	5	27,29,29	1.59	6 (22%)	24,48,48	1.45	3 (12%)
8	ACT	B	3002	-	1,3,3	0.17	0	0,3,3	0.00	-
7	MGF	A	1950	9	0,3,3	0.00	-	-	-	-

In the following table, the Chirals column lists the number of chiral outliers, the number of chiral centers analysed, the number of these observed in the model and the number defined in the Chemical Component Dictionary. Similar counts are reported in the Torsion and Rings columns. '-' means no outliers of that kind were identified.

Mol	Type	Chain	Res	Link	Chirals	Torsions	Rings
6	ACP	A	1007	5	-	5/15/38/38	0/3/3/3
4	CZA	B	1005	5	-	1/4/52/52	0/5/5/5
4	CZA	A	1005	5	-	0/4/52/52	0/5/5/5
6	ACP	B	1007	-	-	6/15/38/38	0/3/3/3

The worst 5 of 24 bond length outliers are listed below:

Mol	Chain	Res	Type	Atoms	Z	Observed(Å)	Ideal(Å)
4	B	1005	CZA	C4-N1	-4.65	1.34	1.39
6	B	1007	ACP	PG-O1G	3.90	1.58	1.50
6	A	1007	ACP	PG-O1G	3.86	1.58	1.50
6	B	1007	ACP	PB-O2B	-3.68	1.47	1.56
4	A	1005	CZA	C4-N1	-3.47	1.35	1.39

The worst 5 of 23 bond angle outliers are listed below:

Mol	Chain	Res	Type	Atoms	Z	Observed(°)	Ideal(°)
6	B	1007	ACP	PA-O3A-PB	7.30	155.72	132.56
6	A	1007	ACP	PA-O3A-PB	6.69	153.76	132.56
6	A	1007	ACP	O3G-PG-O1G	-5.41	98.08	112.39
6	B	1007	ACP	O3G-PG-O1G	-4.74	99.85	112.39
4	B	1005	CZA	C13-C14-C15	4.29	128.13	123.48

There are no chirality outliers.

5 of 12 torsion outliers are listed below:

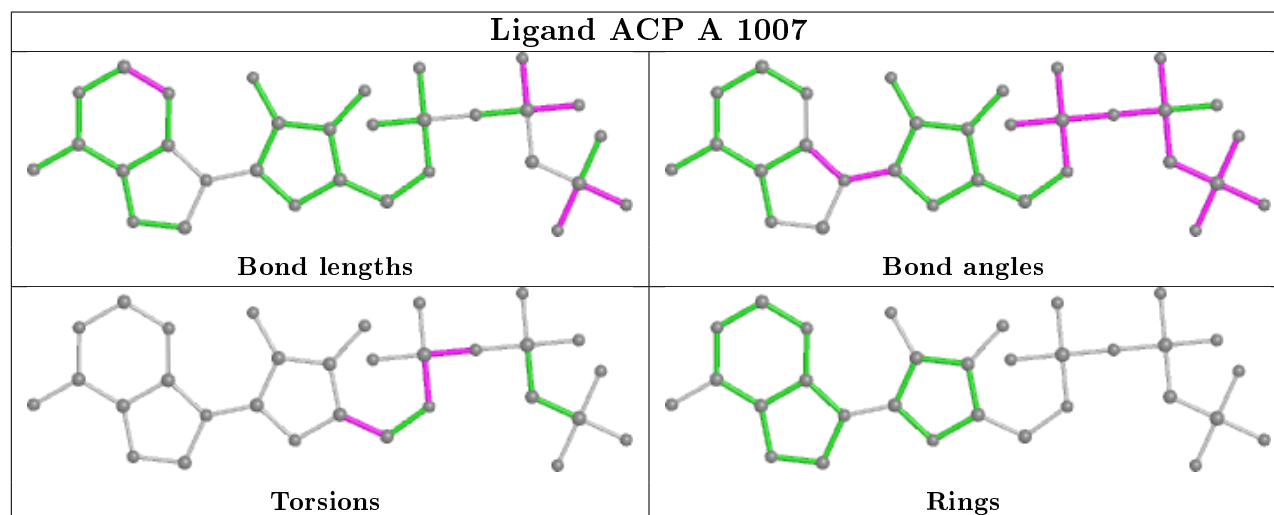
Mol	Chain	Res	Type	Atoms
6	A	1007	ACP	C5'-O5'-PA-O1A
6	A	1007	ACP	C5'-O5'-PA-O3A
6	B	1007	ACP	C5'-O5'-PA-O1A
6	B	1007	ACP	O4'-C4'-C5'-O5'
6	A	1007	ACP	O4'-C4'-C5'-O5'

There are no ring outliers.

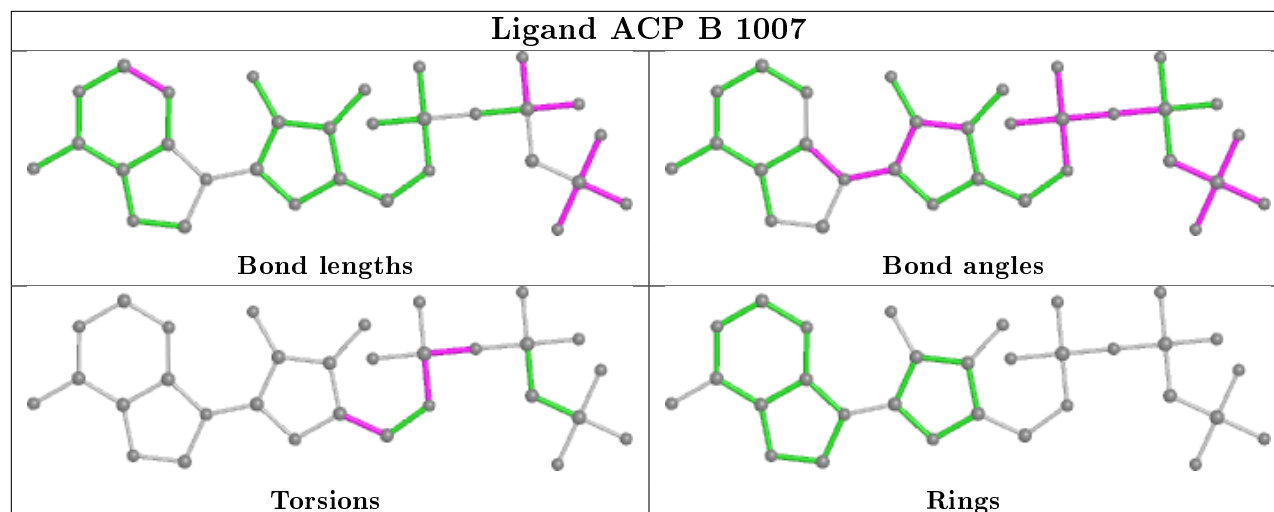
6 monomers are involved in 8 short contacts:

Mol	Chain	Res	Type	Clashes	Symm-Clashes
8	B	3001	ACT	1	0
8	A	3001	ACT	1	0
8	A	3002	ACT	1	0
4	B	1005	CZA	2	0
4	A	1005	CZA	2	0
8	B	3002	ACT	1	0

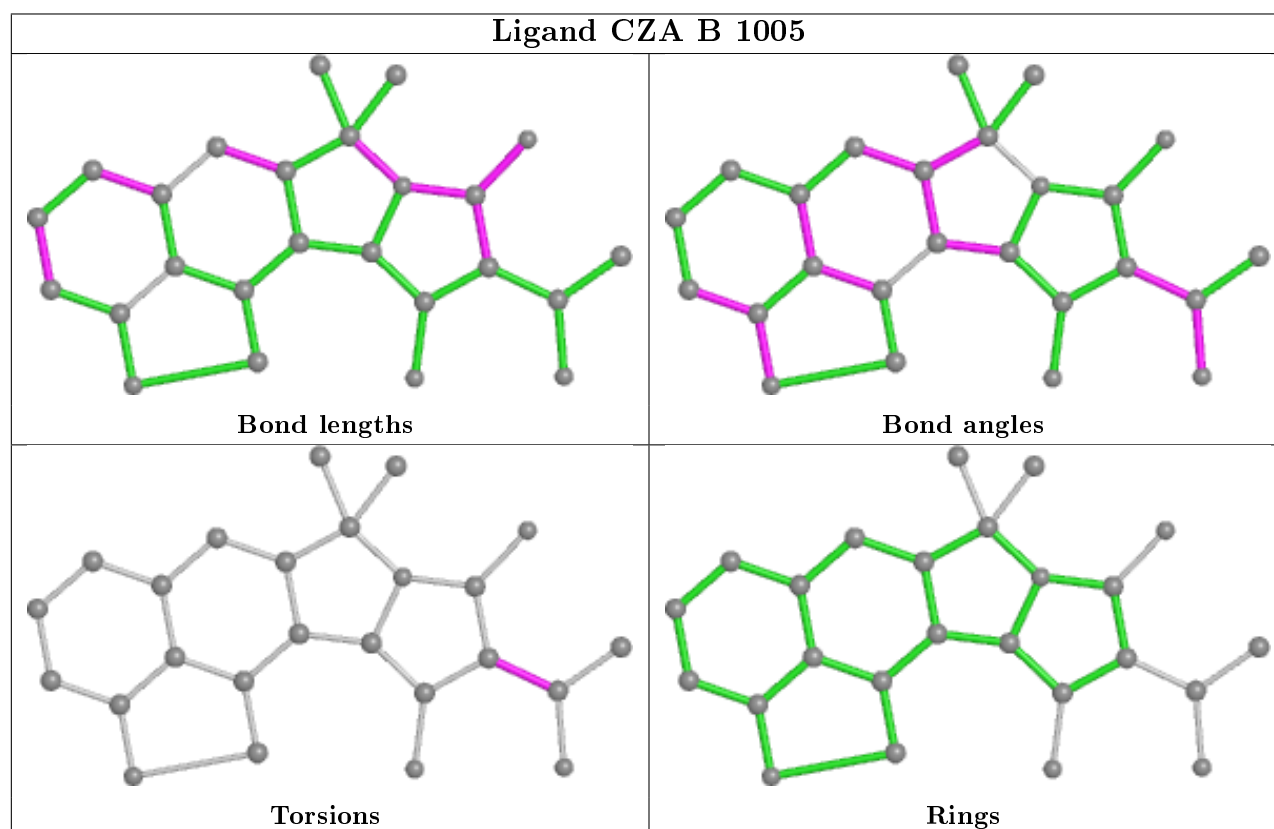
The following is a two-dimensional graphical depiction of Mogul quality analysis of bond lengths, bond angles, torsion angles, and ring geometry for all instances of the Ligand of Interest. In addition, ligands with molecular weight > 250 and outliers as shown on the validation Tables will also be included. For torsion angles, if less than 5% of the Mogul distribution of torsion angles is within 10 degrees of the torsion angle in question, then that torsion angle is considered an outlier. Any bond that is central to one or more torsion angles identified as an outlier by Mogul will be highlighted in the graph. For rings, the root-mean-square deviation (RMSD) between the ring in question and similar rings identified by Mogul is calculated over all ring torsion angles. If the average RMSD is greater than 60 degrees and the minimal RMSD between the ring in question and any Mogul-identified rings is also greater than 60 degrees, then that ring is considered an outlier. The outliers are highlighted in purple. The color gray indicates Mogul did not find sufficient equivalents in the CSD to analyse the geometry.



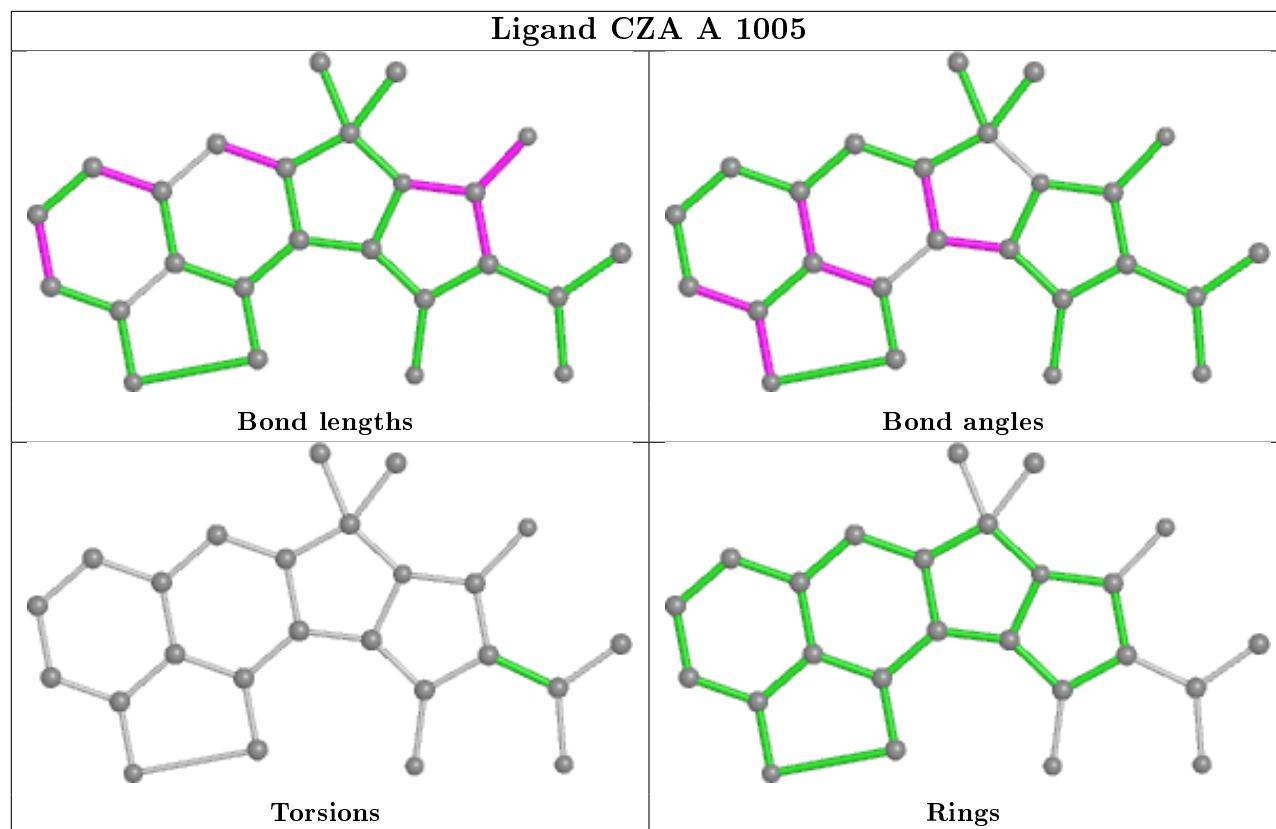
## Ligand ACP B 1007



## Ligand CZA B 1005







## 5.7 Other polymers [i](#)

There are no such residues in this entry.

## 5.8 Polymer linkage issues [i](#)

There are no chain breaks in this entry.

## 6 Fit of model and data [i](#)

### 6.1 Protein, DNA and RNA chains [i](#)

In the following table, the column labelled ‘#RSRZ> 2’ contains the number (and percentage) of RSRZ outliers, followed by percent RSRZ outliers for the chain as percentile scores relative to all X-ray entries and entries of similar resolution. The OWAB column contains the minimum, median, 95<sup>th</sup> percentile and maximum values of the occupancy-weighted average B-factor per residue. The column labelled ‘Q< 0.9’ lists the number of (and percentage) of residues with an average occupancy less than 0.9.

Mol	Chain	Analysed	<RSRZ>	#RSRZ>2	OWAB(Å <sup>2</sup> )	Q<0.9
1	A	994/994 (100%)	0.49	138 (13%) <b>2</b> <b>2</b>	28, 62, 191, 294	0
1	B	994/994 (100%)	0.23	78 (7%) <b>13</b> <b>13</b>	32, 67, 156, 220	0
All	All	1988/1988 (100%)	0.36	216 (10%) <b>5</b> <b>5</b>	28, 65, 177, 294	0

The worst 5 of 216 RSRZ outliers are listed below:

Mol	Chain	Res	Type	RSRZ
1	A	283	VAL	15.3
1	B	288	TRP	10.3
1	A	284	HIS	10.2
1	A	285	GLY	9.9
1	A	281	ASP	9.6

### 6.2 Non-standard residues in protein, DNA, RNA chains [i](#)

There are no non-standard protein/DNA/RNA residues in this entry.

### 6.3 Carbohydrates [i](#)

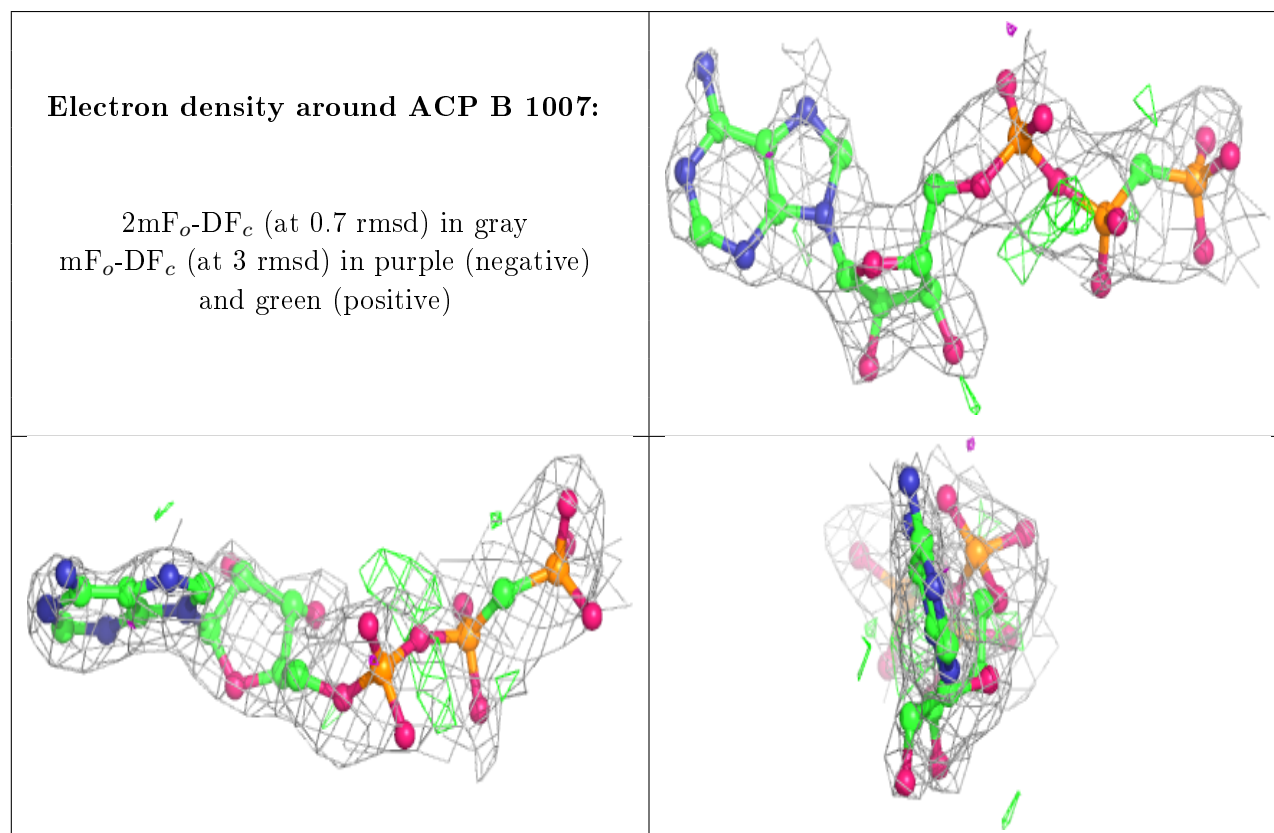
There are no carbohydrates in this entry.

### 6.4 Ligands [i](#)

In the following table, the Atoms column lists the number of modelled atoms in the group and the number defined in the chemical component dictionary. The B-factors column lists the minimum, median, 95<sup>th</sup> percentile and maximum values of B factors of atoms in the group. The column labelled ‘Q< 0.9’ lists the number of atoms with occupancy less than 0.9.

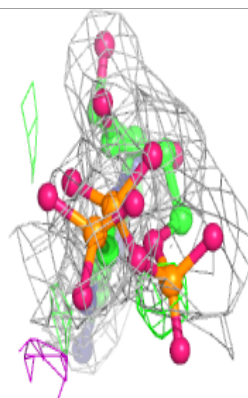
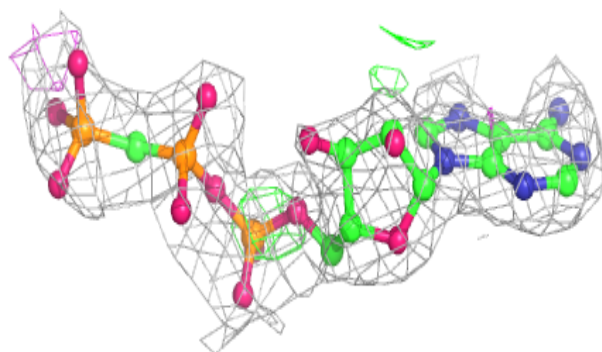
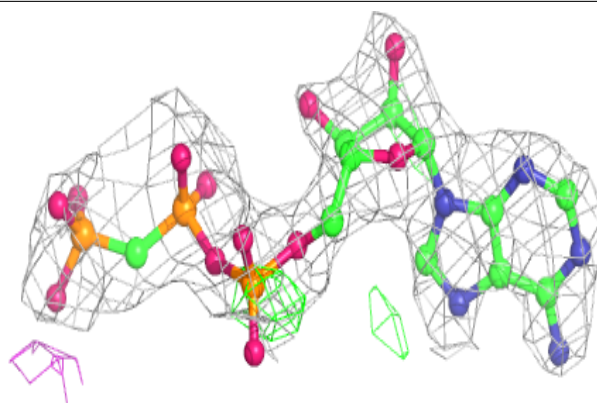
Mol	Type	Chain	Res	Atoms	RSCC	RSR	B-factors( $\text{\AA}^2$ )	Q<0.9
6	ACP	B	1007	31/31	0.82	0.24	31,73,150,371	31
6	ACP	A	1007	31/31	0.87	0.21	38,60,388,388	31
5	MN	A	1008	1/1	0.88	0.41	174,174,174,174	1
8	ACT	B	3002	4/4	0.88	0.21	55,60,63,63	0
8	ACT	B	3001	4/4	0.91	0.24	54,70,71,78	0
3	K	A	1004	1/1	0.92	0.13	78,78,78,78	0
3	K	B	1004	1/1	0.93	0.10	84,84,84,84	0
4	CZA	A	1005	25/25	0.95	0.15	112,124,128,180	0
8	ACT	A	3001	4/4	0.95	0.18	55,67,68,74	0
8	ACT	A	3002	4/4	0.95	0.21	39,52,53,58	0
5	MN	B	1006	1/1	0.95	0.12	102,102,102,102	0
4	CZA	B	1005	25/25	0.96	0.15	75,88,101,104	0
5	MN	A	1006	1/1	0.97	0.06	107,107,107,107	0
7	MGF	B	1950	4/4	0.99	0.18	34,35,35,42	0
2	MG	A	1002	1/1	0.99	0.20	34,34,34,34	0
2	MG	B	1002	1/1	0.99	0.24	37,37,37,37	0
7	MGF	A	1950	4/4	0.99	0.21	40,40,41,45	0

The following is a graphical depiction of the model fit to experimental electron density of all instances of the Ligand of Interest. In addition, ligands with molecular weight > 250 and outliers as shown on the geometry validation Tables will also be included. Each fit is shown from different orientation to approximate a three-dimensional view.

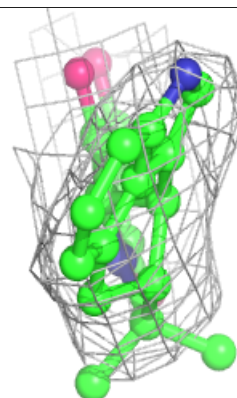
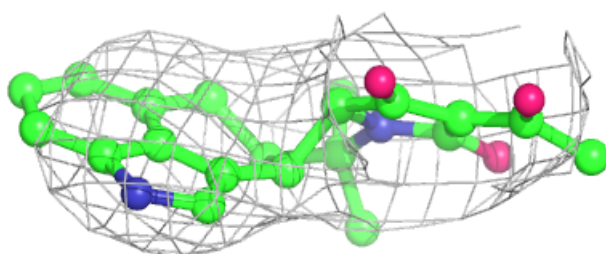
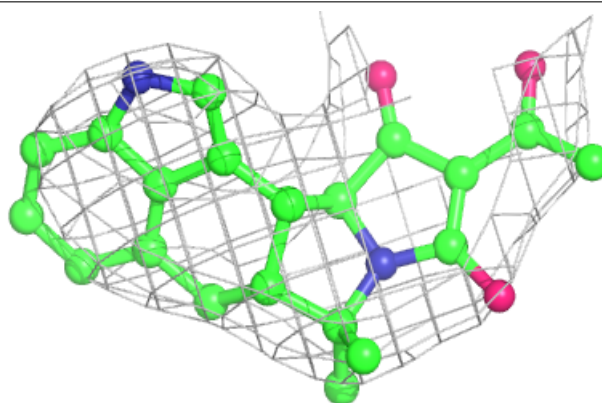


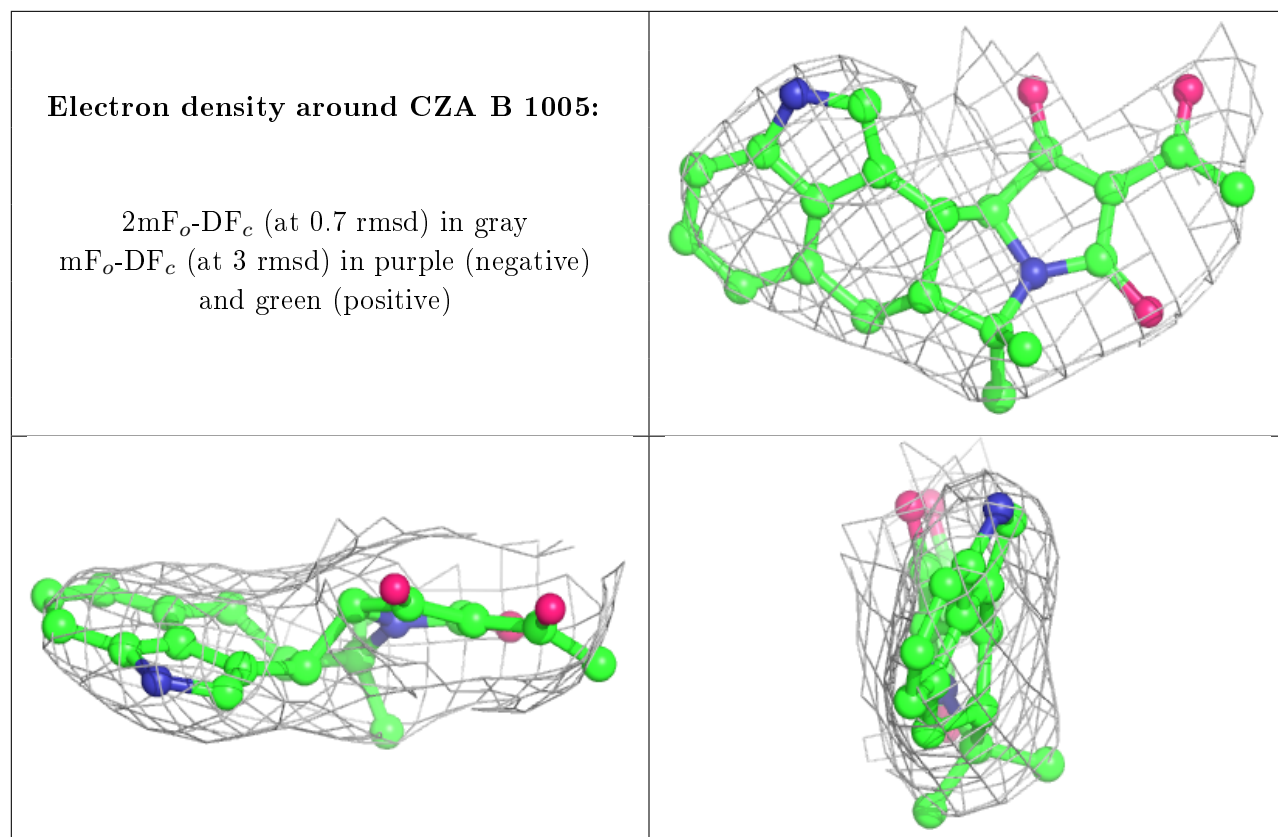
**Electron density around ACP A 1007:**

$2mF_o-DF_c$  (at 0.7 rmsd) in gray  
 $mF_o-DF_c$  (at 3 rmsd) in purple (negative)  
and green (positive)

**Electron density around CZA A 1005:**

$2mF_o-DF_c$  (at 0.7 rmsd) in gray  
 $mF_o-DF_c$  (at 3 rmsd) in purple (negative)  
and green (positive)





## 6.5 Other polymers [i](#)

There are no such residues in this entry.