



Full wwPDB X-ray Structure Validation Report ⓘ

May 25, 2020 – 02:02 am BST

PDB ID : 2BFF
Title : Reactivity modulation of human branched-chain alpha-ketoacid dehydrogenase by an internal molecular switch
Authors : Machius, M.; Wynn, R.M.; Chuang, J.L.; Tomchick, D.R.; Brautigam, C.A.; Chuang, D.T.
Deposited on : 2004-12-06
Resolution : 1.46 Å(reported)

This is a Full wwPDB X-ray Structure Validation Report for a publicly released PDB entry.

We welcome your comments at validation@mail.wwpdb.org

A user guide is available at

<https://www.wwpdb.org/validation/2017/XrayValidationReportHelp>

with specific help available everywhere you see the ⓘ symbol.

The following versions of software and data (see [references ⓘ](#)) were used in the production of this report:

MolProbity : 4.02b-467
Mogul : 1.8.5 (274361), CSD as541be (2020)
Xtriage (Phenix) : 1.13
EDS : 2.11
buster-report : 1.1.7 (2018)
Percentile statistics : 20191225.v01 (using entries in the PDB archive December 25th 2019)
Refmac : 5.8.0158
CCP4 : 7.0.044 (Gargrove)
Ideal geometry (proteins) : Engh & Huber (2001)
Ideal geometry (DNA, RNA) : Parkinson et al. (1996)
Validation Pipeline (wwPDB-VP) : 2.11

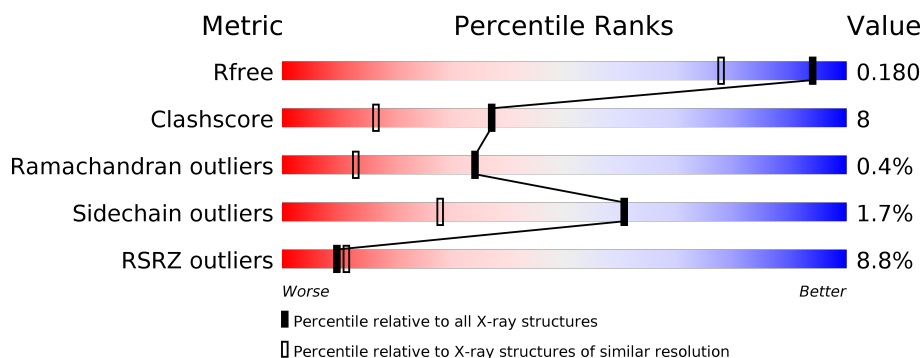
1 Overall quality at a glance

The following experimental techniques were used to determine the structure:

X-RAY DIFFRACTION

The reported resolution of this entry is 1.46 Å.

Percentile scores (ranging between 0-100) for global validation metrics of the entry are shown in the following graphic. The table shows the number of entries on which the scores are based.



Metric	Whole archive (#Entries)	Similar resolution (#Entries, resolution range(Å))
R_{free}	130704	1156 (1.46-1.46)
Clashscore	141614	1202 (1.46-1.46)
Ramachandran outliers	138981	1178 (1.46-1.46)
Sidechain outliers	138945	1178 (1.46-1.46)
RSRZ outliers	127900	1139 (1.46-1.46)

The table below summarises the geometric issues observed across the polymeric chains and their fit to the electron density. The red, orange, yellow and green segments on the lower bar indicate the fraction of residues that contain outliers for ≥ 3 , 2, 1 and 0 types of geometric quality criteria respectively. A grey segment represents the fraction of residues that are not modelled. The numeric value for each fraction is indicated below the corresponding segment, with a dot representing fractions $\leq 5\%$. The upper red bar (where present) indicates the fraction of residues that have poor fit to the electron density. The numeric value is given above the bar.

Mol	Chain	Length	Quality of chain
1	A	400	<div> <div>10%</div> <div> <div></div> <div>80%</div> <div>16%</div> <div>••</div> </div> </div>
2	B	342	<div> <div>7%</div> <div> <div></div> <div>88%</div> <div>9%</div> <div>•</div> </div> </div>

2 Entry composition

There are 7 unique types of molecules in this entry. The entry contains 6887 atoms, of which 0 are hydrogens and 0 are deuteriums.

In the tables below, the ZeroOcc column contains the number of atoms modelled with zero occupancy, the AltConf column contains the number of residues with at least one atom in alternate conformation and the Trace column contains the number of residues modelled with at most 2 atoms.

- Molecule 1 is a protein called 2-OXOISOVALERATE DEHYDROGENASE ALPHA SUB-UNIT.

Mol	Chain	Residues	Atoms					ZeroOcc	AltConf	Trace
1	A	392	Total	C	N	O	S	0	35	0
			3475	2186	623	644	22			

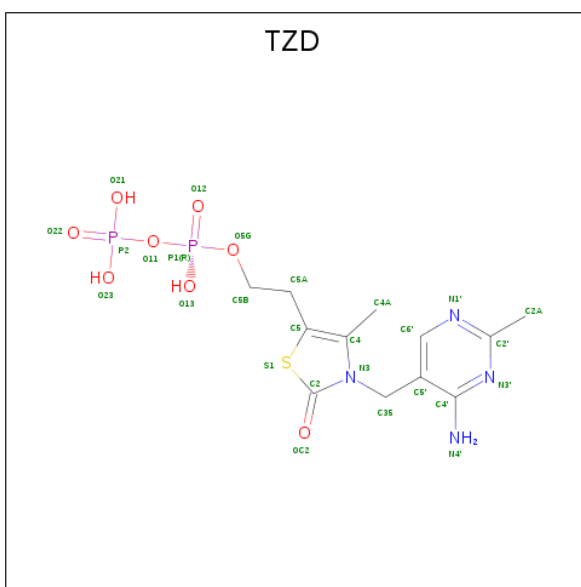
There is a discrepancy between the modelled and reference sequences:

Chain	Residue	Modelled	Actual	Comment	Reference
A	307	GLY	ASN	conflict	UNP P12694

- Molecule 2 is a protein called 2-OXOISOVALERATE DEHYDROGENASE BETA SUB-UNIT.

Mol	Chain	Residues	Atoms					ZeroOcc	AltConf	Trace
2	B	332	Total	C	N	O	S	0	13	0
			2711	1740	455	501	15			

- Molecule 3 is 2-{3-[(4-AMINO-2-METHYLPYRIMIDIN-5-YL)METHYL]-4-METHYL-2-OXO-2,3-DIHYDRO-1,3-THIAZOL-5-YL}ETHYL TRIHYDROGEN DIPHOSPHATE (three-letter code: TZD) (formula: C₁₂H₁₈N₄O₈P₂S).



Mol	Chain	Residues	Atoms						ZeroOcc	AltConf
3	A	1	Total	C	N	O	P	S	0	0
			27	12	4	8	2	1		

- Molecule 4 is POTASSIUM ION (three-letter code: K) (formula: K).

Mol	Chain	Residues	Atoms	ZeroOcc	AltConf
4	B	1	Total K 1 1	0	0
4	A	1	Total K 1 1	0	0

- Molecule 5 is MANGANESE (II) ION (three-letter code: MN) (formula: Mn).

Mol	Chain	Residues	Atoms	ZeroOcc	AltConf
5	A	1	Total Mn 1 1	0	0

- Molecule 6 is GLYCEROL (three-letter code: GOL) (formula: $C_3H_8O_3$).



Mol	Chain	Residues	Atoms			ZeroOcc	AltConf
6	B	1	Total	C	O	0	0
			6	3	3		

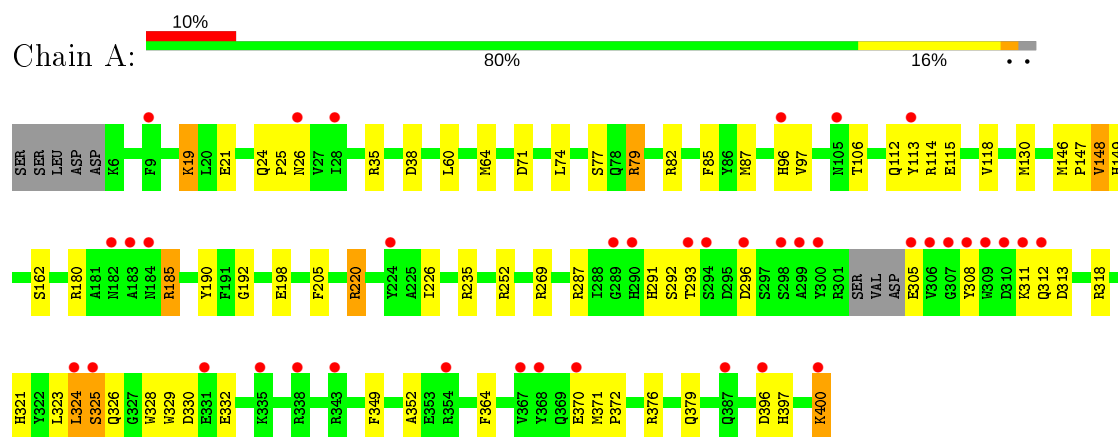
- Molecule 7 is water.

Mol	Chain	Residues	Atoms		ZeroOcc	AltConf
7	A	386	Total	O	0	0
			386	386		
7	B	279	Total	O	0	0
			279	279		

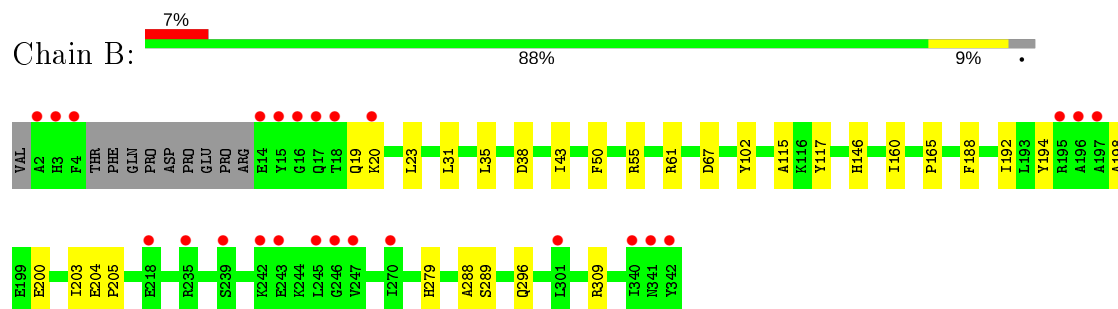
3 Residue-property plots [i](#)

These plots are drawn for all protein, RNA and DNA chains in the entry. The first graphic for a chain summarises the proportions of the various outlier classes displayed in the second graphic. The second graphic shows the sequence view annotated by issues in geometry and electron density. Residues are color-coded according to the number of geometric quality criteria for which they contain at least one outlier: green = 0, yellow = 1, orange = 2 and red = 3 or more. A red dot above a residue indicates a poor fit to the electron density ($RSRZ > 2$). Stretches of 2 or more consecutive residues without any outlier are shown as a green connector. Residues present in the sample, but not in the model, are shown in grey.

• Molecule 1: 2-OXOISOVALERATE DEHYDROGENASE ALPHA SUBUNIT



• Molecule 2: 2-OXOISOVALERATE DEHYDROGENASE BETA SUBUNIT



4 Data and refinement statistics

Property	Value	Source
Space group	P 31 2 1	Depositor
Cell constants a, b, c, α , β , γ	145.13 Å 145.13 Å 69.36 Å 90.00° 90.00° 120.00°	Depositor
Resolution (Å)	30.00 – 1.46 21.51 – 1.46	Depositor EDS
% Data completeness (in resolution range)	98.8 (30.00-1.46) 98.9 (21.51-1.46)	Depositor EDS
R_{merge}	0.04	Depositor
R_{sym}	(Not available)	Depositor
$\langle I/\sigma(I) \rangle$ ¹	2.24 (at 1.46 Å)	Xtriage
Refinement program	REFMAC 5.2.0003	Depositor
R, R_{free}	0.149 , 0.166 0.166 , 0.180	Depositor DCC
R_{free} test set	1436 reflections (1.00%)	wwPDB-VP
Wilson B-factor (Å ²)	14.4	Xtriage
Anisotropy	0.330	Xtriage
Bulk solvent k_{sol} (e/Å ³), B_{sol} (Å ²)	0.40 , 53.2	EDS
L-test for twinning ²	$\langle L \rangle = 0.50$, $\langle L^2 \rangle = 0.33$	Xtriage
Estimated twinning fraction	0.017 for -h,-k,l	Xtriage
F_o, F_c correlation	0.97	EDS
Total number of atoms	6887	wwPDB-VP
Average B, all atoms (Å ²)	13.0	wwPDB-VP

Xtriage's analysis on translational NCS is as follows: *The largest off-origin peak in the Patterson function is 2.98% of the height of the origin peak. No significant pseudotranslation is detected.*

¹Intensities estimated from amplitudes.

²Theoretical values of $\langle |L| \rangle$, $\langle L^2 \rangle$ for acentric reflections are 0.5, 0.333 respectively for untwinned datasets, and 0.375, 0.2 for perfectly twinned datasets.

5 Model quality [i](#)

5.1 Standard geometry [i](#)

Bond lengths and bond angles in the following residue types are not validated in this section: GOL, K, MN, TZD

The Z score for a bond length (or angle) is the number of standard deviations the observed value is removed from the expected value. A bond length (or angle) with $|Z| > 5$ is considered an outlier worth inspection. RMSZ is the root-mean-square of all Z scores of the bond lengths (or angles).

Mol	Chain	Bond lengths		Bond angles	
		RMSZ	$\# Z > 5$	RMSZ	$\# Z > 5$
1	A	0.98	2/3560 (0.1%)	1.03	13/4809 (0.3%)
2	B	0.94	1/2779 (0.0%)	0.97	4/3772 (0.1%)
All	All	0.96	3/6339 (0.0%)	1.01	17/8581 (0.2%)

All (3) bond length outliers are listed below:

Mol	Chain	Res	Type	Atoms	Z	Observed(Å)	Ideal(Å)
1	A	198	GLU	CD-OE2	6.69	1.33	1.25
2	B	61	ARG	CZ-NH1	5.36	1.40	1.33
1	A	190	TYR	CD1-CE1	5.24	1.47	1.39

All (17) bond angle outliers are listed below:

Mol	Chain	Res	Type	Atoms	Z	Observed(°)	Ideal(°)
2	B	61	ARG	NE-CZ-NH1	9.64	125.12	120.30
2	B	61	ARG	NE-CZ-NH2	-8.08	116.26	120.30
1	A	287	ARG	NE-CZ-NH1	6.68	123.64	120.30
1	A	252	ARG	NE-CZ-NH2	-6.67	116.97	120.30
1	A	71	ASP	CB-CG-OD1	6.34	124.00	118.30
1	A	220	ARG	NE-CZ-NH2	-5.87	117.37	120.30
1	A	296	ASP	CB-CG-OD2	5.77	123.50	118.30
1	A	185	ARG	NE-CZ-NH1	5.66	123.13	120.30
1	A	235	ARG	NE-CZ-NH2	-5.57	117.51	120.30
1	A	180	ARG	NE-CZ-NH1	5.51	123.05	120.30
1	A	330	ASP	CB-CG-OD2	5.42	123.18	118.30
1	A	38	ASP	CB-CG-OD2	5.33	123.10	118.30
2	B	38	ASP	CB-CG-OD2	-5.20	113.62	118.30
1	A	180	ARG	NE-CZ-NH2	-5.12	117.74	120.30
2	B	67	ASP	CB-CG-OD2	5.08	122.87	118.30
1	A	371[A]	MET	CG-SD-CE	-5.02	92.17	100.20

Continued on next page...

Continued from previous page...

Mol	Chain	Res	Type	Atoms	Z	Observed(°)	Ideal(°)
1	A	371[B]	MET	CG-SD-CE	-5.02	92.17	100.20

There are no chirality outliers.

There are no planarity outliers.

5.2 Too-close contacts ⓘ

In the following table, the Non-H and H(model) columns list the number of non-hydrogen atoms and hydrogen atoms in the chain respectively. The H(added) column lists the number of hydrogen atoms added and optimized by MolProbity. The Clashes column lists the number of clashes within the asymmetric unit, whereas Symm-Clashes lists symmetry related clashes.

Mol	Chain	Non-H	H(model)	H(added)	Clashes	Symm-Clashes
1	A	3475	0	3331	73	1
2	B	2711	0	2660	23	0
3	A	27	0	15	1	0
4	A	1	0	0	0	0
4	B	1	0	0	0	0
5	A	1	0	0	0	0
6	B	6	0	8	0	0
7	A	386	0	0	19	1
7	B	279	0	0	1	0
All	All	6887	0	6014	96	2

The all-atom clashscore is defined as the number of clashes found per 1000 atoms (including hydrogen atoms). The all-atom clashscore for this structure is 8.

All (96) close contacts within the same asymmetric unit are listed below, sorted by their clash magnitude.

Atom-1	Atom-2	Interatomic distance (Å)	Clash overlap (Å)
1:A:96[C]:HIS:CE1	1:A:220:ARG:HD3	1.73	1.23
1:A:96[B]:HIS:NE2	1:A:115[B]:GLU:HG3	1.66	1.09
1:A:96[C]:HIS:HE1	1:A:220:ARG:HD3	0.95	1.05
1:A:326:GLN:HA	7:A:2303:HOH:O	1.66	0.94
1:A:96[C]:HIS:HE1	1:A:220:ARG:CD	1.85	0.89
1:A:96[B]:HIS:CE1	1:A:220:ARG:HD3	2.09	0.87
1:A:185:ARG:HG2	7:A:2220:HOH:O	1.75	0.86
2:B:31:LEU:O	2:B:35[B]:LEU:HD23	1.75	0.85
1:A:114[B]:ARG:HG3	1:A:220:ARG:CZ	2.06	0.85
2:B:19:GLN:HE21	2:B:203:ILE:CD1	1.93	0.81

Continued on next page...

Continued from previous page...

Atom-1	Atom-2	Interatomic distance (Å)	Clash overlap (Å)
1:A:96[B]:HIS:NE2	1:A:115[B]:GLU:CG	2.46	0.79
1:A:326:GLN:CA	7:A:2303:HOH:O	2.27	0.78
1:A:114[B]:ARG:HG3	1:A:220:ARG:NH1	1.97	0.78
1:A:87[B]:MET:SD	1:A:292:SER:HB3	2.27	0.74
1:A:64[B]:MET:SD	1:A:97[B]:VAL:HG21	2.27	0.73
2:B:19:GLN:HE21	2:B:203:ILE:HD11	1.52	0.73
1:A:115[A]:GLU:HB2	7:A:2155:HOH:O	1.86	0.73
2:B:289[B]:SER:OG	2:B:309:ARG:NH1	2.22	0.72
1:A:96[B]:HIS:HE1	1:A:220:ARG:HD3	1.54	0.71
1:A:205[A]:PHE:CD2	7:A:2263:HOH:O	2.45	0.69
2:B:19:GLN:NE2	2:B:203:ILE:HD11	2.08	0.68
1:A:205[A]:PHE:HD2	7:A:2263:HOH:O	1.77	0.68
1:A:96[B]:HIS:CD2	1:A:115[B]:GLU:HB3	2.28	0.68
1:A:87[B]:MET:HE1	7:A:2385:HOH:O	1.94	0.66
1:A:149:HIS:HE1	1:A:162[B]:SER:OG	1.79	0.65
2:B:279:HIS:CE1	2:B:288:ALA:H	2.15	0.65
1:A:313:ASP:OD1	1:A:318[B]:ARG:NH2	2.29	0.65
2:B:279:HIS:HE1	2:B:288:ALA:H	1.43	0.65
2:B:19:GLN:NE2	2:B:203:ILE:CD1	2.60	0.64
1:A:96[B]:HIS:CE1	1:A:114[B]:ARG:O	2.52	0.62
1:A:308:TYR:O	1:A:312:GLN:HB2	2.00	0.62
1:A:114[B]:ARG:CG	1:A:220:ARG:CZ	2.77	0.62
1:A:60:LEU:O	1:A:64[B]:MET:HG3	2.00	0.61
1:A:74:LEU:HD21	1:A:130[A]:MET:SD	2.40	0.61
1:A:26:ASN:HB3	7:A:2041:HOH:O	2.01	0.60
1:A:35[A]:ARG:HB3	7:A:2048:HOH:O	2.02	0.60
1:A:82[A]:ARG:NH2	7:A:2110:HOH:O	2.35	0.60
1:A:96[B]:HIS:CD2	1:A:115[B]:GLU:CB	2.85	0.59
1:A:77[B]:SER:OG	1:A:349:PHE:CE1	2.55	0.58
1:A:87[B]:MET:SD	1:A:292:SER:CB	2.91	0.58
1:A:326:GLN:HB3	1:A:328[B]:TRP:CE2	2.39	0.57
1:A:291:HIS:HE1	7:A:2385:HOH:O	1.87	0.57
1:A:305:GLU:N	7:A:2295:HOH:O	2.39	0.55
1:A:77[B]:SER:HG	1:A:349:PHE:HE1	1.52	0.55
1:A:112[A]:GLN:NE2	1:A:192:GLY:H	2.05	0.55
1:A:112[A]:GLN:HE22	1:A:192:GLY:H	1.54	0.55
1:A:397:HIS:HB2	7:A:2380:HOH:O	2.06	0.54
2:B:23[B]:LEU:HB3	2:B:194:TYR:HA	1.88	0.54
2:B:19:GLN:HE21	2:B:203:ILE:HD12	1.71	0.53
2:B:35[B]:LEU:HD21	2:B:43:ILE:HD11	1.91	0.53
1:A:324[C]:LEU:O	1:A:325[C]:SER:CB	2.57	0.52

Continued on next page...

Continued from previous page...

Atom-1	Atom-2	Interatomic distance (Å)	Clash overlap (Å)
1:A:291:HIS:HD2	7:A:2236:HOH:O	1.92	0.52
1:A:19:LYS:HG3	1:A:21:GLU:OE2	2.10	0.51
1:A:376:ARG:NH1	7:A:2355:HOH:O	2.43	0.51
1:A:400:LYS:HE3	7:A:2381:HOH:O	2.10	0.51
2:B:19:GLN:HB2	2:B:203:ILE:HD11	1.93	0.50
2:B:146[B]:HIS:CE1	7:B:2138:HOH:O	2.65	0.50
1:A:96[B]:HIS:HD2	1:A:115[B]:GLU:HB3	1.74	0.49
1:A:64[B]:MET:HG3	1:A:97[B]:VAL:HG11	1.94	0.49
2:B:55[B]:ARG:HE	2:B:55[B]:ARG:HA	1.78	0.49
2:B:20:LYS:HG3	2:B:200:GLU:OE2	2.13	0.48
1:A:321:HIS:O	1:A:324[C]:LEU:O	2.31	0.48
1:A:400:LYS:HB2	7:A:2381:HOH:O	2.12	0.48
1:A:326:GLN:CB	7:A:2303:HOH:O	2.61	0.48
1:A:87[B]:MET:SD	1:A:291:HIS:O	2.71	0.48
1:A:370[A]:GLU:O	1:A:372:PRO:HD3	2.13	0.48
2:B:115:ALA:HB2	2:B:160:ILE:HG23	1.96	0.48
1:A:324[C]:LEU:O	1:A:325[C]:SER:OG	2.28	0.48
1:A:96[C]:HIS:HB3	1:A:118:VAL:HG23	1.96	0.47
1:A:149:HIS:CE1	1:A:162[B]:SER:OG	2.65	0.47
2:B:102:TYR:OH	2:B:146[B]:HIS:HE1	1.97	0.47
1:A:96[B]:HIS:CD2	1:A:115[B]:GLU:HA	2.50	0.47
1:A:148[A]:VAL:HG12	1:A:148[A]:VAL:O	2.15	0.46
1:A:324[C]:LEU:HD12	1:A:329:TRP:HB3	1.99	0.45
1:A:106:THR:O	1:A:185:ARG:HD2	2.17	0.45
2:B:102:TYR:OH	2:B:146[B]:HIS:CE1	2.70	0.45
2:B:20:LYS:HE2	2:B:198:ALA:HB3	1.99	0.45
1:A:77[B]:SER:OG	1:A:349:PHE:HE1	1.96	0.44
1:A:396:ASP:HB2	7:A:2376:HOH:O	2.17	0.44
1:A:146[A]:MET:HG3	1:A:147:PRO:HD2	2.00	0.44
2:B:19:GLN:NE2	2:B:203:ILE:HD12	2.30	0.43
1:A:114[B]:ARG:HB2	1:A:220:ARG:NE	2.33	0.43
1:A:64[B]:MET:CG	1:A:97[B]:VAL:HG21	2.48	0.42
1:A:85:PHE:CE2	1:A:87[A]:MET:HG3	2.55	0.42
1:A:113[A]:TYR:OH	3:A:601:TZD:H5B1	2.20	0.42
1:A:24:GLN:HA	1:A:25:PRO:HD3	1.82	0.42
2:B:165:PRO:HD2	2:B:188:PHE:O	2.19	0.41
1:A:79:ARG:NH2	1:A:293:THR:O	2.53	0.41
2:B:204:GLU:HB3	2:B:205:PRO:HD2	2.03	0.41
2:B:192[B]:ILE:HD12	2:B:192[B]:ILE:HA	1.91	0.41
1:A:130[A]:MET:HB3	1:A:352:ALA:CB	2.50	0.41
1:A:64[B]:MET:CG	1:A:97[B]:VAL:HG11	2.50	0.41

Continued on next page...

Continued from previous page...

Atom-1	Atom-2	Interatomic distance (Å)	Clash overlap (Å)
1:A:326:GLN:HB2	1:A:328[B]:TRP:CG	2.56	0.41
1:A:323:LEU:HB3	1:A:329:TRP:HB2	2.03	0.41
1:A:87[B]:MET:CE	1:A:113[B]:TYR:CD1	3.04	0.40
1:A:364:PHE:CD2	1:A:379[B]:GLN:HG3	2.57	0.40

All (2) symmetry-related close contacts are listed below. The label for Atom-2 includes the symmetry operator and encoded unit-cell translations to be applied.

Atom-1	Atom-2	Interatomic distance (Å)	Clash overlap (Å)
1:A:326:GLN:OE1	1:A:370[A]:GLU:CG[3_664]	2.01	0.19
7:A:2258:HOH:O	7:A:2258:HOH:O[5_555]	2.02	0.18

5.3 Torsion angles ⓘ

5.3.1 Protein backbone ⓘ

In the following table, the Percentiles column shows the percent Ramachandran outliers of the chain as a percentile score with respect to all X-ray entries followed by that with respect to entries of similar resolution.

The Analysed column shows the number of residues for which the backbone conformation was analysed, and the total number of residues.

Mol	Chain	Analysed	Favoured	Allowed	Outliers	Percentiles	
1	A	428/400 (107%)	414 (97%)	8 (2%)	6 (1%)	11	2
2	B	343/342 (100%)	332 (97%)	11 (3%)	0	100	100
All	All	771/742 (104%)	746 (97%)	19 (2%)	6 (1%)	34	4

All (6) Ramachandran outliers are listed below:

Mol	Chain	Res	Type
1	A	325[A]	SER
1	A	325[B]	SER
1	A	325[C]	SER
1	A	148[A]	VAL
1	A	148[B]	VAL
1	A	226	ILE

5.3.2 Protein sidechains ⓘ

In the following table, the Percentiles column shows the percent sidechain outliers of the chain as a percentile score with respect to all X-ray entries followed by that with respect to entries of similar resolution.

The Analysed column shows the number of residues for which the sidechain conformation was analysed, and the total number of residues.

Mol	Chain	Analysed	Rotameric	Outliers	Percentiles	
1	A	365/335 (109%)	356 (98%)	9 (2%)	47	14
2	B	294/289 (102%)	290 (99%)	4 (1%)	67	37
All	All	659/624 (106%)	646 (98%)	13 (2%)	60	22

All (13) residues with a non-rotameric sidechain are listed below:

Mol	Chain	Res	Type
1	A	19	LYS
1	A	79	ARG
1	A	269	ARG
1	A	311	LYS
1	A	324[A]	LEU
1	A	324[B]	LEU
1	A	324[C]	LEU
1	A	332	GLU
1	A	400	LYS
2	B	50	PHE
2	B	117	TYR
2	B	296[A]	GLN
2	B	296[B]	GLN

Some sidechains can be flipped to improve hydrogen bonding and reduce clashes. All (6) such sidechains are listed below:

Mol	Chain	Res	Type
1	A	149	HIS
1	A	182	ASN
1	A	291	HIS
1	A	333	GLN
2	B	19	GLN
2	B	279	HIS

5.3.3 RNA [i](#)

There are no RNA molecules in this entry.

5.4 Non-standard residues in protein, DNA, RNA chains [i](#)

There are no non-standard protein/DNA/RNA residues in this entry.

5.5 Carbohydrates [i](#)

There are no carbohydrates in this entry.

5.6 Ligand geometry [i](#)

Of 5 ligands modelled in this entry, 3 are monoatomic - leaving 2 for Mogul analysis.

In the following table, the Counts columns list the number of bonds (or angles) for which Mogul statistics could be retrieved, the number of bonds (or angles) that are observed in the model and the number of bonds (or angles) that are defined in the Chemical Component Dictionary. The Link column lists molecule types, if any, to which the group is linked. The Z score for a bond length (or angle) is the number of standard deviations the observed value is removed from the expected value. A bond length (or angle) with $|Z| > 2$ is considered an outlier worth inspection. RMSZ is the root-mean-square of all Z scores of the bond lengths (or angles).

Mol	Type	Chain	Res	Link	Bond lengths			Bond angles		
					Counts	RMSZ	$\# Z > 2$	Counts	RMSZ	$\# Z > 2$
6	GOL	B	1344	-	5,5,5	0.58	0	5,5,5	0.48	0
3	TZD	A	601	5	23,28,28	1.35	3 (13%)	28,42,42	2.07	9 (32%)

In the following table, the Chirals column lists the number of chiral outliers, the number of chiral centers analysed, the number of these observed in the model and the number defined in the Chemical Component Dictionary. Similar counts are reported in the Torsion and Rings columns. '-' means no outliers of that kind were identified.

Mol	Type	Chain	Res	Link	Chirals	Torsions	Rings
6	GOL	B	1344	-	-	0/4/4/4	-
3	TZD	A	601	5	-	0/16/17/17	0/2/2/2

All (3) bond length outliers are listed below:

Mol	Chain	Res	Type	Atoms	Z	Observed(Å)	Ideal(Å)
3	A	601	TZD	C5A-C5	3.44	1.52	1.50
3	A	601	TZD	C4'-N3'	2.99	1.39	1.35

Continued on next page...

Continued from previous page...

Mol	Chain	Res	Type	Atoms	Z	Observed(Å)	Ideal(Å)
3	A	601	TZD	C35-C5'	2.36	1.56	1.51

All (9) bond angle outliers are listed below:

Mol	Chain	Res	Type	Atoms	Z	Observed(°)	Ideal(°)
3	A	601	TZD	C5'-C6'-N1'	-4.53	116.28	123.82
3	A	601	TZD	C5A-C5-C4	4.29	130.88	127.43
3	A	601	TZD	C6'-N1'-C2'	3.90	122.60	115.96
3	A	601	TZD	C5'-C4'-N4'	3.83	127.61	122.19
3	A	601	TZD	C6'-C5'-C4'	3.69	120.74	115.72
3	A	601	TZD	N4'-C4'-N3'	-2.48	113.52	117.03
3	A	601	TZD	C5-C4-N3	2.38	112.64	107.66
3	A	601	TZD	C2A-C2'-N1'	2.25	119.61	117.14
3	A	601	TZD	C4A-C4-C5	-2.21	122.77	127.60

There are no chirality outliers.

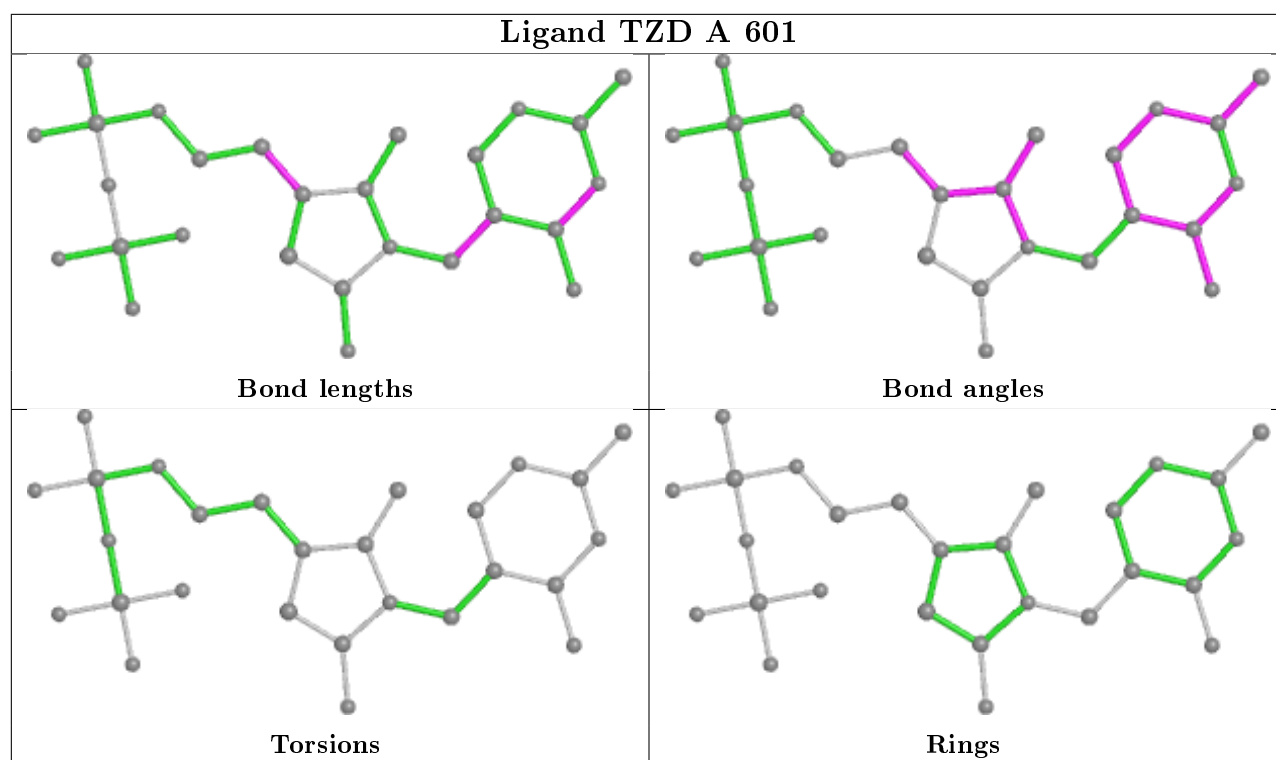
There are no torsion outliers.

There are no ring outliers.

1 monomer is involved in 1 short contact:

Mol	Chain	Res	Type	Clashes	Symm-Clashes
3	A	601	TZD	1	0

The following is a two-dimensional graphical depiction of Mogul quality analysis of bond lengths, bond angles, torsion angles, and ring geometry for all instances of the Ligand of Interest. In addition, ligands with molecular weight > 250 and outliers as shown on the validation Tables will also be included. For torsion angles, if less than 5% of the Mogul distribution of torsion angles is within 10 degrees of the torsion angle in question, then that torsion angle is considered an outlier. Any bond that is central to one or more torsion angles identified as an outlier by Mogul will be highlighted in the graph. For rings, the root-mean-square deviation (RMSD) between the ring in question and similar rings identified by Mogul is calculated over all ring torsion angles. If the average RMSD is greater than 60 degrees and the minimal RMSD between the ring in question and any Mogul-identified rings is also greater than 60 degrees, then that ring is considered an outlier. The outliers are highlighted in purple. The color gray indicates Mogul did not find sufficient equivalents in the CSD to analyse the geometry.



5.7 Other polymers [i](#)

There are no such residues in this entry.

5.8 Polymer linkage issues [i](#)

There are no chain breaks in this entry.

6 Fit of model and data

6.1 Protein, DNA and RNA chains

In the following table, the column labelled ‘#RSRZ> 2’ contains the number (and percentage) of RSRZ outliers, followed by percent RSRZ outliers for the chain as percentile scores relative to all X-ray entries and entries of similar resolution. The OWAB column contains the minimum, median, 95th percentile and maximum values of the occupancy-weighted average B-factor per residue. The column labelled ‘Q< 0.9’ lists the number of (and percentage) of residues with an average occupancy less than 0.9.

Mol	Chain	Analysed	<RSRZ>	#RSRZ>2	OWAB(Å ²)	Q<0.9
1	A	392/400 (98%)	0.86	39 (9%) 7 8	5, 10, 25, 37	0
2	B	332/342 (97%)	0.29	25 (7%) 14 17	5, 11, 22, 39	0
All	All	724/742 (97%)	0.60	64 (8%) 10 11	5, 10, 24, 39	0

All (64) RSRZ outliers are listed below:

Mol	Chain	Res	Type	RSRZ
2	B	2	ALA	10.5
1	A	308	TYR	8.4
2	B	4	PHE	7.6
1	A	299	ALA	6.9
2	B	15	TYR	6.4
1	A	311	LYS	6.4
1	A	309	TRP	6.1
2	B	342	TYR	5.4
2	B	197	ALA	5.4
1	A	300	TYR	5.1
2	B	246	GLY	5.0
2	B	3	HIS	4.9
1	A	306	VAL	4.5
2	B	16	GLY	4.5
1	A	312	GLN	4.3
1	A	183	ALA	4.3
2	B	341	ASN	4.2
1	A	298	SER	4.1
1	A	324[A]	LEU	4.0
2	B	301	LEU	3.9
2	B	340	ILE	3.9
1	A	338	ARG	3.9
1	A	400	LYS	3.8
2	B	14	GLU	3.6

Continued on next page...

Continued from previous page...

Mol	Chain	Res	Type	RSRZ
2	B	196	ALA	3.5
2	B	245	LEU	3.5
2	B	17	GLN	3.5
1	A	294	SER	3.4
1	A	396	ASP	3.4
1	A	28	ILE	3.2
1	A	290	HIS	3.2
1	A	182	ASN	3.1
1	A	296	ASP	3.1
1	A	310	ASP	3.1
1	A	335	LYS	3.0
2	B	195	ARG	2.9
1	A	343	ARG	2.9
1	A	26	ASN	2.9
2	B	243	GLU	2.8
2	B	20	LYS	2.8
2	B	18	THR	2.7
1	A	307	GLY	2.7
1	A	305	GLU	2.6
1	A	370[A]	GLU	2.6
2	B	242	LYS	2.6
1	A	96[A]	HIS	2.5
1	A	224	TYR	2.4
1	A	293	THR	2.3
1	A	289	GLY	2.3
1	A	184	ASN	2.3
2	B	218	GLU	2.3
1	A	325[A]	SER	2.2
1	A	113[A]	TYR	2.2
1	A	387	GLN	2.2
2	B	235	ARG	2.2
1	A	367	VAL	2.1
2	B	270	ILE	2.1
1	A	9	PHE	2.1
2	B	247	VAL	2.1
1	A	105	ASN	2.1
1	A	368	TYR	2.0
1	A	331	GLU	2.0
2	B	239	SER	2.0
1	A	354[A]	ARG	2.0

6.2 Non-standard residues in protein, DNA, RNA chains [i](#)

There are no non-standard protein/DNA/RNA residues in this entry.

6.3 Carbohydrates [i](#)

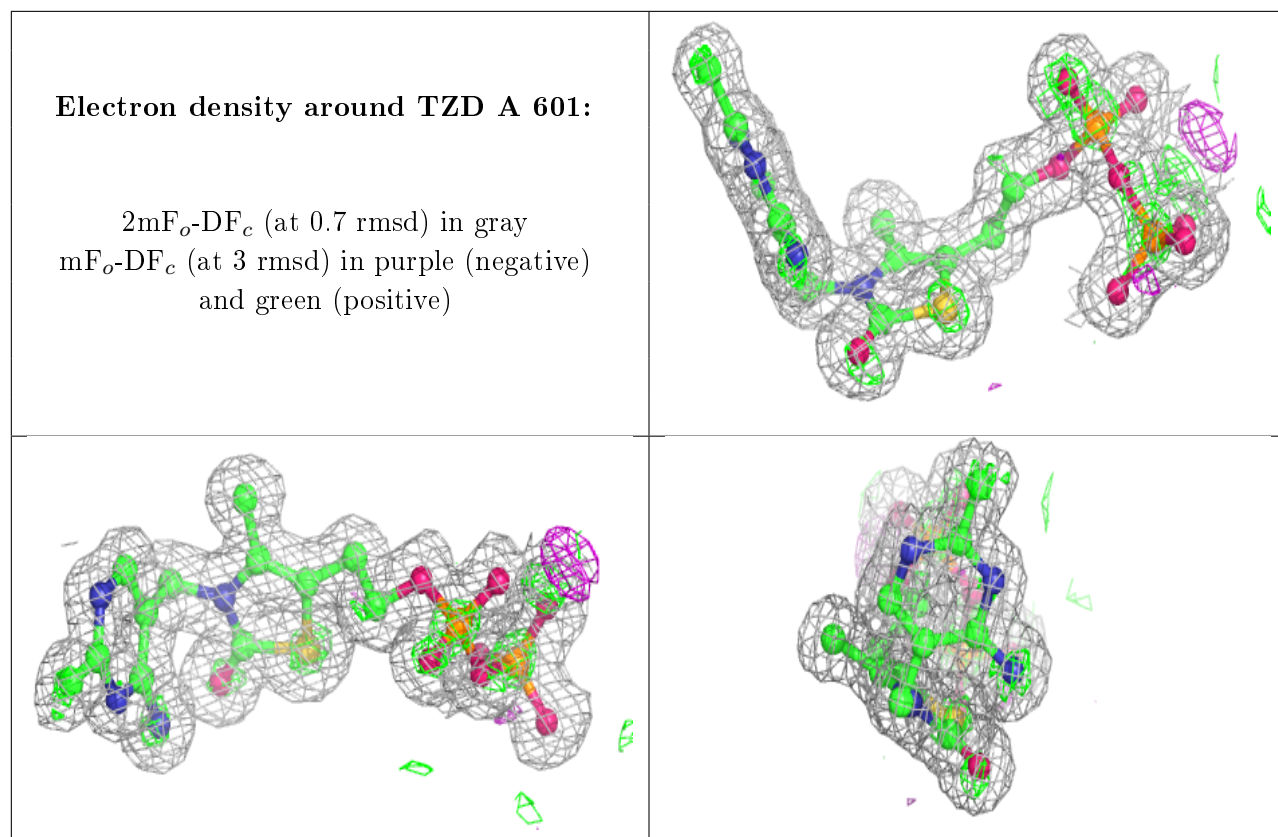
There are no carbohydrates in this entry.

6.4 Ligands [i](#)

In the following table, the Atoms column lists the number of modelled atoms in the group and the number defined in the chemical component dictionary. The B-factors column lists the minimum, median, 95th percentile and maximum values of B factors of atoms in the group. The column labelled 'Q< 0.9' lists the number of atoms with occupancy less than 0.9.

Mol	Type	Chain	Res	Atoms	RSCC	RSR	B-factors(\AA^2)	Q<0.9
3	TZD	A	601	27/27	0.98	0.11	2,4,6,6	0
4	K	B	1343	1/1	0.99	0.04	6,6,6,6	0
6	GOL	B	1344	6/6	0.99	0.05	9,10,12,12	0
5	MN	A	1402	1/1	1.00	0.02	5,5,5,5	0
4	K	A	1401	1/1	1.00	0.04	6,6,6,6	0

The following is a graphical depiction of the model fit to experimental electron density of all instances of the Ligand of Interest. In addition, ligands with molecular weight > 250 and outliers as shown on the geometry validation Tables will also be included. Each fit is shown from different orientation to approximate a three-dimensional view.



6.5 Other polymers [i](#)

There are no such residues in this entry.