



Full wwPDB X-ray Structure Validation Report ⓘ

May 22, 2020 – 01:32 am BST

PDB ID : 4BHT
Title : Structural Determinants of Cofactor Specificity and Domain Flexibility in Bacterial Glutamate Dehydrogenases
Authors : Oliveira, T.; Sharkey, M.; Engel, P.; Khan, A.
Deposited on : 2013-04-06
Resolution : 2.50 Å(reported)

This is a Full wwPDB X-ray Structure Validation Report for a publicly released PDB entry.

We welcome your comments at validation@mail.wwpdb.org

A user guide is available at

<https://www.wwpdb.org/validation/2017/XrayValidationReportHelp>

with specific help available everywhere you see the ⓘ symbol.

The following versions of software and data (see [references ⓘ](#)) were used in the production of this report:

MolProbity : 4.02b-467
Mogul : 1.8.5 (274361), CSD as541be (2020)
Xtriage (Phenix) : 1.13
EDS : 2.11
Percentile statistics : 20191225.v01 (using entries in the PDB archive December 25th 2019)
Refmac : 5.8.0158
CCP4 : 7.0.044 (Gargrove)
Ideal geometry (proteins) : Engh & Huber (2001)
Ideal geometry (DNA, RNA) : Parkinson et al. (1996)
Validation Pipeline (wwPDB-VP) : 2.11

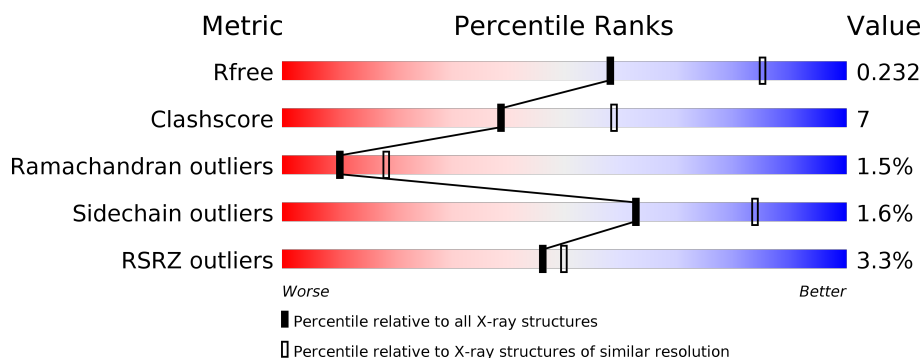
1 Overall quality at a glance

The following experimental techniques were used to determine the structure:

X-RAY DIFFRACTION

The reported resolution of this entry is 2.50 Å.

Percentile scores (ranging between 0-100) for global validation metrics of the entry are shown in the following graphic. The table shows the number of entries on which the scores are based.



Metric	Whole archive (#Entries)	Similar resolution (#Entries, resolution range(Å))
R_{free}	130704	4661 (2.50-2.50)
Clashscore	141614	5346 (2.50-2.50)
Ramachandran outliers	138981	5231 (2.50-2.50)
Sidechain outliers	138945	5233 (2.50-2.50)
RSRZ outliers	127900	4559 (2.50-2.50)

The table below summarises the geometric issues observed across the polymeric chains and their fit to the electron density. The red, orange, yellow and green segments on the lower bar indicate the fraction of residues that contain outliers for ≥ 3 , 2, 1 and 0 types of geometric quality criteria respectively. A grey segment represents the fraction of residues that are not modelled. The numeric value for each fraction is indicated below the corresponding segment, with a dot representing fractions $\leq 5\%$. The upper red bar (where present) indicates the fraction of residues that have poor fit to the electron density. The numeric value is given above the bar.

Mol	Chain	Length	Quality of chain
1	A	447	<div> <div></div> <div>90% 9% .</div> </div>
1	B	447	<div> <div></div> <div>91% 8% .</div> </div>
1	C	447	<div> <div></div> <div>90% 9% .</div> </div>
1	D	447	<div> <div>16%</div> <div>72% 19% 5% . .</div> </div>
1	E	447	<div> <div>2%</div> <div>88% 10% . .</div> </div>
1	F	447	<div> <div>%</div> <div>93% 6% .</div> </div>

The following table lists non-polymeric compounds, carbohydrate monomers and non-standard residues in protein, DNA, RNA chains that are outliers for geometric or electron-density-fit criteria:

Mol	Type	Chain	Res	Chirality	Geometry	Clashes	Electron density
2	GOL	A	1454	-	-	X	-
3	EPE	C	1451	-	-	X	-
4	PG4	E	1451	-	-	X	-

2 Entry composition [i](#)

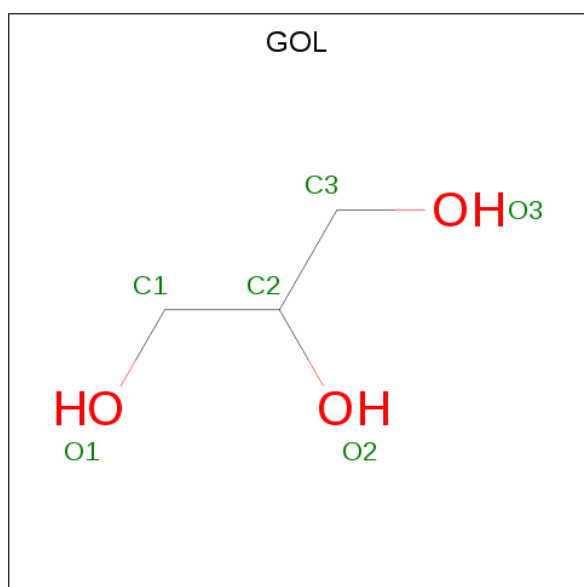
There are 5 unique types of molecules in this entry. The entry contains 41397 atoms, of which 20253 are hydrogens and 0 are deuteriums.

In the tables below, the ZeroOcc column contains the number of atoms modelled with zero occupancy, the AltConf column contains the number of residues with at least one atom in alternate conformation and the Trace column contains the number of residues modelled with at most 2 atoms.

- Molecule 1 is a protein called NADP-SPECIFIC GLUTAMATE DEHYDROGENASE.

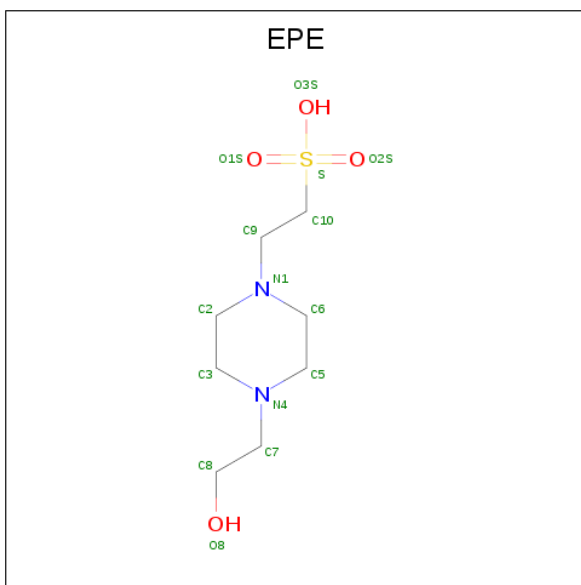
Mol	Chain	Residues	Atoms						ZeroOcc	AltConf	Trace
1	A	442	Total	C	H	N	O	S	0	4	0
			6752	2136	3362	597	636	21			
1	B	442	Total	C	H	N	O	S	0	1	0
			6719	2125	3346	595	632	21			
1	C	442	Total	C	H	N	O	S	0	1	0
			6717	2124	3345	595	632	21			
1	D	439	Total	C	H	N	O	S	0	1	0
			6684	2113	3330	594	626	21			
1	E	442	Total	C	H	N	O	S	0	0	0
			6706	2121	3339	594	631	21			
1	F	442	Total	C	H	N	O	S	0	2	0
			6732	2129	3353	597	632	21			

- Molecule 2 is GLYCEROL (three-letter code: GOL) (formula: $C_3H_8O_3$).



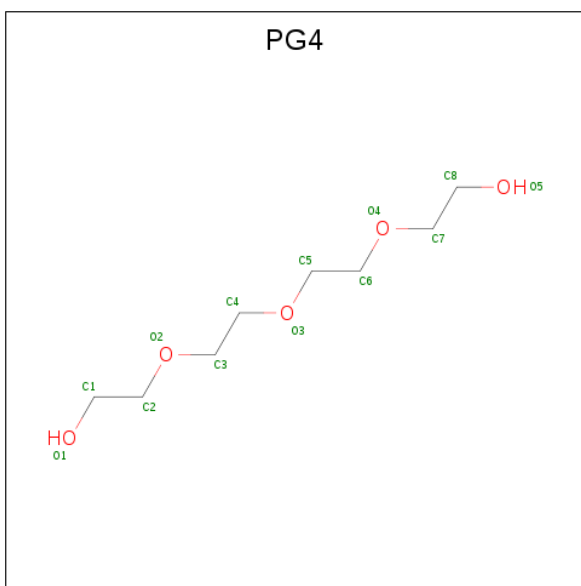
Mol	Chain	Residues	Atoms				ZeroOcc	AltConf
2	A	1	Total	C	H	O	0	0
			14	3	8	3		
2	A	1	Total	C	H	O	0	0
			14	3	8	3		
2	A	1	Total	C	H	O	0	0
			14	3	8	3		
2	A	1	Total	C	H	O	0	0
			14	3	8	3		
2	A	1	Total	C	H	O	0	0
			14	3	8	3		
2	A	1	Total	C	H	O	0	0
			14	3	8	3		
2	C	1	Total	C	H	O	0	0
			14	3	8	3		
2	C	1	Total	C	H	O	0	0
			14	3	8	3		
2	C	1	Total	C	H	O	0	0
			14	3	8	3		
2	D	1	Total	C	H	O	0	0
			14	3	8	3		
2	D	1	Total	C	H	O	0	0
			14	3	8	3		
2	D	1	Total	C	H	O	0	0
			14	3	8	3		
2	E	1	Total	C	H	O	0	0
			14	3	8	3		
2	E	1	Total	C	H	O	0	0
			14	3	8	3		
2	E	1	Total	C	H	O	0	0
			14	3	8	3		
2	F	1	Total	C	H	O	0	0
			14	3	8	3		
2	F	1	Total	C	H	O	0	0
			13	3	7	3		

- Molecule 3 is 4-(2-HYDROXYETHYL)-1-PIPERAZINE ETHANESULFONIC ACID (three-letter code: EPE) (formula: C₈H₁₈N₂O₄S).



Mol	Chain	Residues	Atoms						ZeroOcc	AltConf
3	C	1	Total	C	H	N	O	S	0	0
			32	8	17	2	4	1		

- Molecule 4 is TETRAETHYLENE GLYCOL (three-letter code: PG4) (formula: $C_8H_{18}O_5$).



Mol	Chain	Residues	Atoms				ZeroOcc	AltConf
4	E	1	Total	C	H	O	0	0
			31	8	18	5		

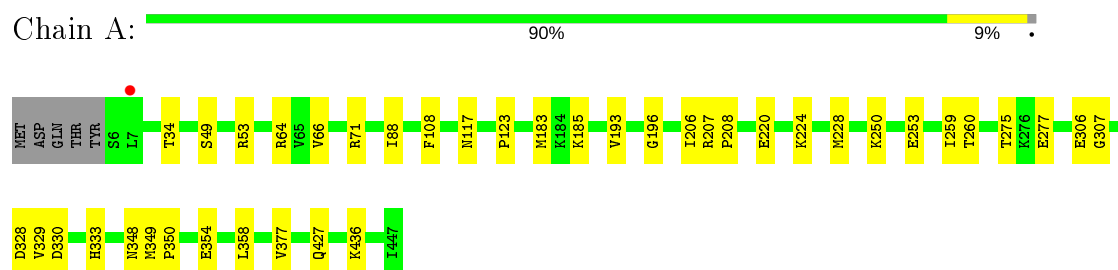
- Molecule 5 is water.

Mol	Chain	Residues	Atoms		ZeroOcc	AltConf
5	A	160	Total 160	O 160	0	0
5	B	151	Total 151	O 151	0	0
5	C	160	Total 160	O 160	0	0
5	D	103	Total 103	O 103	0	0
5	E	93	Total 93	O 93	0	0
5	F	106	Total 106	O 106	0	0

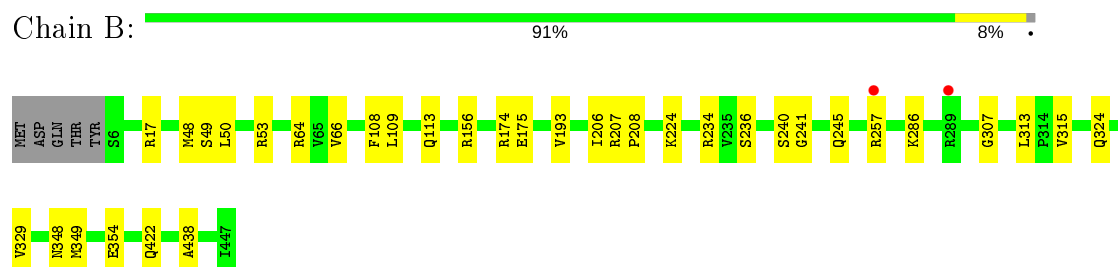
3 Residue-property plots

These plots are drawn for all protein, RNA and DNA chains in the entry. The first graphic for a chain summarises the proportions of the various outlier classes displayed in the second graphic. The second graphic shows the sequence view annotated by issues in geometry and electron density. Residues are color-coded according to the number of geometric quality criteria for which they contain at least one outlier: green = 0, yellow = 1, orange = 2 and red = 3 or more. A red dot above a residue indicates a poor fit to the electron density ($RSRZ > 2$). Stretches of 2 or more consecutive residues without any outlier are shown as a green connector. Residues present in the sample, but not in the model, are shown in grey.

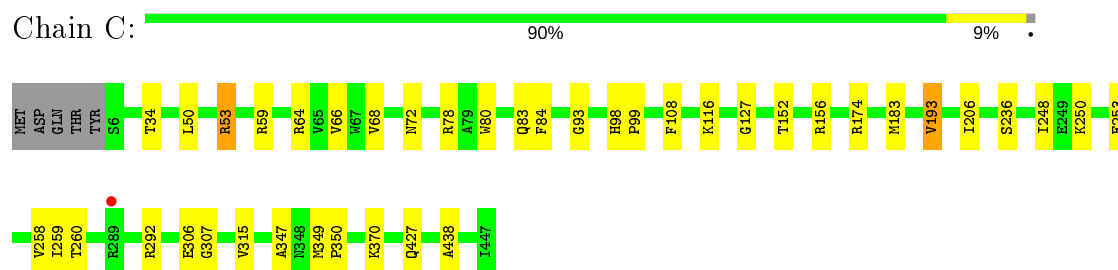
• Molecule 1: NADP-SPECIFIC GLUTAMATE DEHYDROGENASE



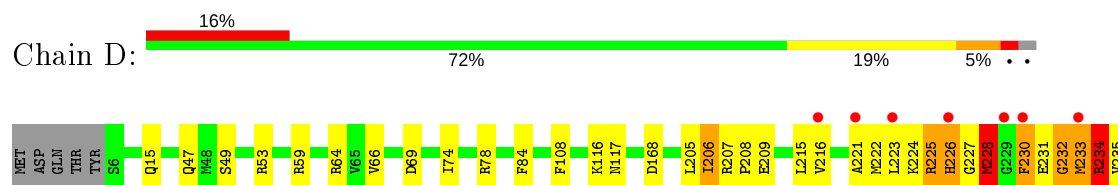
• Molecule 1: NADP-SPECIFIC GLUTAMATE DEHYDROGENASE

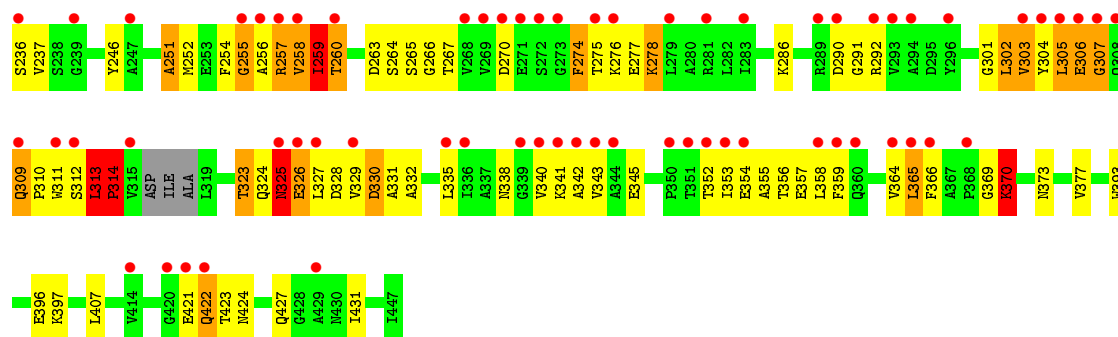


• Molecule 1: NADP-SPECIFIC GLUTAMATE DEHYDROGENASE

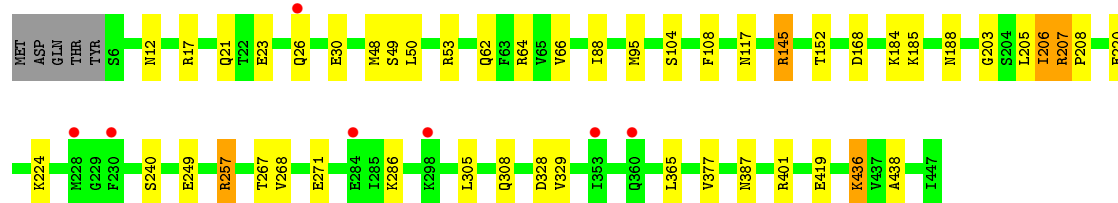
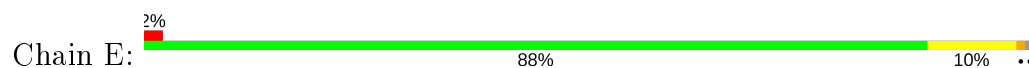


• Molecule 1: NADP-SPECIFIC GLUTAMATE DEHYDROGENASE

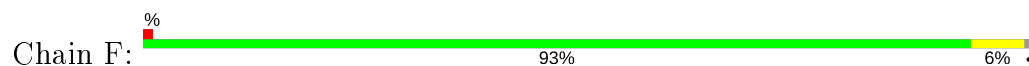




● Molecule 1: NADP-SPECIFIC GLUTAMATE DEHYDROGENASE



● Molecule 1: NADP-SPECIFIC GLUTAMATE DEHYDROGENASE



4 Data and refinement statistics

Property	Value	Source
Space group	P 21 21 21	Depositor
Cell constants a, b, c, α , β , γ	100.97Å 152.86Å 169.37Å 90.00° 90.00° 90.00°	Depositor
Resolution (Å)	46.90 – 2.50 46.90 – 2.50	Depositor EDS
% Data completeness (in resolution range)	99.8 (46.90-2.50) 99.9 (46.90-2.50)	Depositor EDS
R_{merge}	0.01	Depositor
R_{sym}	(Not available)	Depositor
$\langle I/\sigma(I) \rangle$ ¹	3.22 (at 2.51Å)	Xtriage
Refinement program	PHENIX (PHENIX.REFINE: 1.8.2_1309)	Depositor
R, R_{free}	0.159 , 0.227 0.164 , 0.232	Depositor DCC
R_{free} test set	4557 reflections (5.00%)	wwPDB-VP
Wilson B-factor (Å ²)	34.9	Xtriage
Anisotropy	0.662	Xtriage
Bulk solvent k_{sol} (e/Å ³), B_{sol} (Å ²)	0.41 , 47.3	EDS
L-test for twinning ²	$\langle L \rangle = 0.49$, $\langle L^2 \rangle = 0.33$	Xtriage
Estimated twinning fraction	No twinning to report.	Xtriage
F_o, F_c correlation	0.95	EDS
Total number of atoms	41397	wwPDB-VP
Average B, all atoms (Å ²)	44.0	wwPDB-VP

Xtriage's analysis on translational NCS is as follows: *The analyses of the Patterson function reveals a significant off-origin peak that is 24.39 % of the origin peak, indicating pseudo-translational symmetry. The chance of finding a peak of this or larger height randomly in a structure without pseudo-translational symmetry is equal to 3.8687e-03. The detected translational NCS is most likely also responsible for the elevated intensity ratio.*

¹ Intensities estimated from amplitudes.

² Theoretical values of $\langle |L| \rangle$, $\langle L^2 \rangle$ for acentric reflections are 0.5, 0.333 respectively for untwinned datasets, and 0.375, 0.2 for perfectly twinned datasets.

5 Model quality

5.1 Standard geometry

Bond lengths and bond angles in the following residue types are not validated in this section: GOL, PG4, EPE

The Z score for a bond length (or angle) is the number of standard deviations the observed value is removed from the expected value. A bond length (or angle) with $|Z| > 5$ is considered an outlier worth inspection. RMSZ is the root-mean-square of all Z scores of the bond lengths (or angles).

Mol	Chain	Bond lengths		Bond angles	
		RMSZ	# $ Z > 5$	RMSZ	# $ Z > 5$
1	A	0.73	0/3468	0.79	2/4680 (0.0%)
1	B	0.71	0/3441	0.79	1/4643 (0.0%)
1	C	0.74	1/3440 (0.0%)	0.80	2/4642 (0.0%)
1	D	0.73	0/3421	0.85	8/4613 (0.2%)
1	E	0.70	0/3432	0.75	3/4631 (0.1%)
1	F	0.70	0/3451	0.78	0/4657
All	All	0.72	1/20653 (0.0%)	0.79	16/27866 (0.1%)

Chiral center outliers are detected by calculating the chiral volume of a chiral center and verifying if the center is modelled as a planar moiety or with the opposite hand. A planarity outlier is detected by checking planarity of atoms in a peptide group, atoms in a mainchain group or atoms of a sidechain that are expected to be planar.

Mol	Chain	#Chirality outliers	#Planarity outliers
1	A	0	1
1	C	0	1
1	D	0	4
1	F	0	1
All	All	0	7

All (1) bond length outliers are listed below:

Mol	Chain	Res	Type	Atoms	Z	Observed(Å)	Ideal(Å)
1	C	193	VAL	CB-CG2	-6.73	1.38	1.52

All (16) bond angle outliers are listed below:

Mol	Chain	Res	Type	Atoms	Z	Observed(°)	Ideal(°)
1	D	326	GLU	C-N-CA	8.10	141.95	121.70
1	A	71	ARG	NE-CZ-NH1	7.36	123.98	120.30

Continued on next page...

Continued from previous page...

Mol	Chain	Res	Type	Atoms	Z	Observed(°)	Ideal(°)
1	D	69	ASP	CB-CG-OD1	6.74	124.37	118.30
1	B	193	VAL	CG1-CB-CG2	6.64	121.52	110.90
1	D	309	GLN	C-N-CD	6.33	141.68	128.40
1	D	59	ARG	NE-CZ-NH1	6.07	123.33	120.30
1	D	259	ILE	CG1-CB-CG2	-5.94	98.34	111.40
1	D	313	LEU	C-N-CD	5.73	140.44	128.40
1	D	314	PRO	CA-N-CD	-5.60	103.66	111.50
1	D	69	ASP	CB-CG-OD2	-5.60	113.26	118.30
1	C	53	ARG	NE-CZ-NH2	-5.57	117.52	120.30
1	C	174	ARG	NE-CZ-NH2	-5.43	117.58	120.30
1	E	17	ARG	NE-CZ-NH2	-5.33	117.63	120.30
1	E	145	ARG	NE-CZ-NH1	5.30	122.95	120.30
1	E	257	ARG	NE-CZ-NH2	-5.20	117.70	120.30
1	A	71	ARG	NE-CZ-NH2	-5.01	117.79	120.30

There are no chirality outliers.

All (7) planarity outliers are listed below:

Mol	Chain	Res	Type	Group
1	A	306	GLU	Peptide
1	C	306	GLU	Peptide
1	D	226	HIS	Peptide
1	D	230	PHE	Peptide
1	D	257	ARG	Peptide
1	D	312	SER	Peptide
1	F	306	GLU	Peptide

5.2 Too-close contacts ⓘ

In the following table, the Non-H and H(model) columns list the number of non-hydrogen atoms and hydrogen atoms in the chain respectively. The H(added) column lists the number of hydrogen atoms added and optimized by MolProbity. The Clashes column lists the number of clashes within the asymmetric unit, whereas Symm-Clashes lists symmetry related clashes.

Mol	Chain	Non-H	H(model)	H(added)	Clashes	Symm-Clashes
1	A	3390	3362	3351	31	0
1	B	3373	3346	3336	32	0
1	C	3372	3345	3334	29	0
1	D	3354	3330	3320	150	0
1	E	3367	3339	3328	42	1
1	F	3379	3353	3341	19	1

Continued on next page...

Continued from previous page...

Mol	Chain	Non-H	H(model)	H(added)	Clashes	Symm-Clashes
2	A	42	56	56	7	0
2	C	18	24	24	5	0
2	D	18	24	24	0	0
2	E	18	24	24	0	0
2	F	12	15	16	1	0
3	C	15	17	18	8	0
4	E	13	18	18	11	0
5	A	160	0	0	4	0
5	B	151	0	0	3	0
5	C	160	0	0	4	1
5	D	103	0	0	7	0
5	E	93	0	0	10	1
5	F	106	0	0	2	0
All	All	21144	20253	20190	302	2

The all-atom clashscore is defined as the number of clashes found per 1000 atoms (including hydrogen atoms). The all-atom clashscore for this structure is 7.

All (302) close contacts within the same asymmetric unit are listed below, sorted by their clash magnitude.

Atom-1	Atom-2	Interatomic distance (Å)	Clash overlap (Å)
1:D:230:PHE:CD1	1:D:256:ALA:HB2	1.72	1.25
1:B:234:ARG:HD2	1:B:257:ARG:NH2	1.54	1.21
1:B:234:ARG:CG	1:B:257:ARG:HH21	1.56	1.19
1:B:234:ARG:CD	1:B:257:ARG:HH21	1.55	1.18
1:D:230:PHE:CE1	1:D:256:ALA:HB2	1.80	1.15
1:D:230:PHE:HA	1:D:232:GLY:H	1.04	1.12
1:B:234:ARG:CG	1:B:257:ARG:NH2	2.24	0.98
1:D:309:GLN:HE22	1:D:326:GLU:HG2	1.24	0.97
1:B:234:ARG:CD	1:B:257:ARG:NH2	2.19	0.97
1:D:233:MET:SD	1:D:234:ARG:NH1	2.38	0.96
1:D:313:LEU:HD13	1:D:314:PRO:HD3	1.51	0.92
1:D:236:SER:CA	1:D:260:THR:OG1	2.17	0.92
1:D:258:VAL:HG21	1:D:274:PHE:H	1.34	0.91
1:D:309:GLN:NE2	1:D:326:GLU:HG2	1.85	0.91
1:A:328[A]:ASP:OD1	5:A:2133:HOH:O	1.88	0.90
1:A:220:GLU:O	1:A:224:LYS:HG2	1.71	0.89
1:D:313:LEU:HD13	1:D:314:PRO:CD	2.02	0.89
1:D:236:SER:HA	1:D:260:THR:OG1	1.73	0.88
1:D:230:PHE:HA	1:D:232:GLY:N	1.89	0.88
1:B:234:ARG:HG2	1:B:257:ARG:HH21	1.39	0.88

Continued on next page...

Continued from previous page...

Atom-1	Atom-2	Interatomic distance (Å)	Clash overlap (Å)
1:D:257:ARG:HA	1:D:258:VAL:HG23	1.58	0.85
1:C:183:MET:HG2	1:C:193:VAL:HG21	1.58	0.84
1:D:302:LEU:HD23	1:D:303:VAL:HG23	1.58	0.83
1:D:236:SER:HA	1:D:260:THR:HG1	1.43	0.83
1:D:223:LEU:HD23	1:D:228:MET:HB3	1.61	0.83
1:D:304:TYR:O	1:D:306:GLU:N	2.12	0.82
1:A:348[A]:ASN:ND2	5:A:2059:HOH:O	2.13	0.81
1:D:313:LEU:HD22	1:D:314:PRO:HA	1.62	0.81
1:B:234:ARG:HD2	1:B:257:ARG:HH22	1.44	0.81
1:D:323:THR:HB	1:D:326:GLU:OE1	1.80	0.81
1:D:258:VAL:HG13	1:D:274:PHE:HD2	1.44	0.81
1:E:387:ASN:HD22	4:E:1451:PG4:H61	1.48	0.77
1:D:309:GLN:HE22	1:D:326:GLU:CG	1.98	0.77
1:D:258:VAL:HG12	1:D:259:ILE:N	2.00	0.77
1:D:305:LEU:O	1:D:307:GLY:N	2.17	0.76
1:D:370:LYS:N	5:D:2088:HOH:O	2.10	0.76
2:A:1451:GOL:O1	5:A:2157:HOH:O	2.06	0.74
1:C:116:LYS:HD2	1:C:370:LYS:HA	1.70	0.74
1:C:68:VAL:HB	3:C:1451:EPE:H81	1.70	0.74
1:D:258:VAL:O	1:D:259:ILE:CD1	2.37	0.73
1:D:258:VAL:CG1	1:D:259:ILE:N	2.51	0.72
1:D:230:PHE:CD1	1:D:256:ALA:CB	2.64	0.72
1:D:236:SER:HB2	1:D:260:THR:OG1	1.89	0.72
1:D:236:SER:CB	1:D:260:THR:OG1	2.36	0.72
5:D:2099:HOH:O	1:E:401:ARG:NH2	2.21	0.71
1:D:259:ILE:O	5:D:2080:HOH:O	2.08	0.70
1:F:264:SER:O	5:F:2081:HOH:O	2.09	0.70
1:D:258:VAL:CG1	1:D:259:ILE:H	2.05	0.69
1:D:236:SER:CA	1:D:260:THR:HG1	2.01	0.69
3:C:1451:EPE:C7	1:E:145:ARG:HD3	2.23	0.68
1:D:251:ALA:O	1:D:254:PHE:HB2	1.92	0.68
1:D:233:MET:SD	1:D:234:ARG:CZ	2.82	0.68
1:D:235:VAL:HG13	1:D:258:VAL:H	1.59	0.68
1:E:419:GLU:OE2	5:E:2089:HOH:O	2.12	0.68
1:D:258:VAL:O	1:D:259:ILE:HD13	1.95	0.67
1:D:258:VAL:HG21	1:D:274:PHE:N	2.09	0.66
1:D:260:THR:HG21	1:D:310:PRO:CB	2.27	0.65
3:C:1451:EPE:H71	1:E:145:ARG:HD3	1.76	0.65
1:D:228:MET:HE2	1:D:341:LYS:HB3	1.77	0.65
1:D:116:LYS:NZ	1:D:373:ASN:OD1	2.23	0.64
1:D:302:LEU:HD23	1:D:303:VAL:H	1.62	0.64

Continued on next page...

Continued from previous page...

Atom-1	Atom-2	Interatomic distance (Å)	Clash overlap (Å)
1:E:249:GLU:OE1	5:E:2076:HOH:O	2.15	0.64
1:D:236:SER:HB3	1:D:313:LEU:HD21	1.80	0.64
1:D:258:VAL:C	1:D:259:ILE:HD12	2.18	0.63
1:B:64:ARG:HD3	1:B:66:VAL:CG2	2.28	0.63
1:D:263:ASP:O	1:D:265:SER:N	2.32	0.63
1:E:387:ASN:HA	4:E:1451:PG4:H62	1.80	0.63
1:D:258:VAL:HG22	1:D:274:PHE:HB2	1.81	0.62
1:D:230:PHE:CE1	1:D:256:ALA:CB	2.71	0.62
1:A:277:GLU:H	1:A:277:GLU:CD	2.02	0.62
1:D:275:THR:HB	1:D:277:GLU:O	1.98	0.62
1:D:313:LEU:HD13	1:D:314:PRO:N	2.14	0.61
1:D:266:GLY:HA3	1:D:304:TYR:CE1	2.35	0.61
3:C:1451:EPE:H71	1:E:145:ARG:CZ	2.30	0.61
1:D:258:VAL:O	1:D:259:ILE:CB	2.48	0.61
1:A:275:THR:HB	1:A:277:GLU:OE1	2.00	0.61
2:A:1454:GOL:H32	1:E:188:ASN:HB3	1.83	0.61
1:E:64:ARG:HD3	1:E:66:VAL:CG2	2.30	0.60
1:B:234:ARG:HG3	1:B:257:ARG:NH2	2.16	0.60
1:D:260:THR:HG21	1:D:310:PRO:HB2	1.82	0.60
1:D:237:VAL:N	1:D:260:THR:OG1	2.34	0.60
1:F:36:TRP:O	1:F:40:GLU:HG2	2.02	0.60
1:F:222:MET:HE3	1:F:367:ALA:HB2	1.83	0.60
1:D:225[B]:ARG:HH11	1:D:225[B]:ARG:CB	2.15	0.59
1:A:64:ARG:HD3	1:A:66:VAL:CG2	2.33	0.59
1:D:258:VAL:C	1:D:259:ILE:CD1	2.71	0.59
1:D:258:VAL:CG2	1:D:274:PHE:H	2.12	0.59
4:E:1451:PG4:H31	5:E:2059:HOH:O	2.03	0.59
1:E:387:ASN:ND2	4:E:1451:PG4:H61	2.15	0.59
1:B:234:ARG:HH11	1:B:257:ARG:NH2	2.00	0.59
1:D:310:PRO:O	1:D:313:LEU:HD12	2.02	0.59
1:F:64:ARG:HD3	1:F:66:VAL:CG2	2.33	0.58
1:C:250:LYS:HD3	1:C:253:GLU:OE1	2.04	0.58
1:D:258:VAL:O	1:D:259:ILE:HB	2.02	0.58
1:D:313:LEU:HD22	1:D:314:PRO:CA	2.33	0.58
1:B:234:ARG:HG2	1:B:257:ARG:NH2	2.08	0.57
1:D:260:THR:CG2	1:D:310:PRO:HB3	2.34	0.57
1:D:228:MET:CE	1:D:341:LYS:HB3	2.35	0.57
1:A:250:LYS:NZ	1:A:253:GLU:OE1	2.29	0.56
1:C:183:MET:HG2	1:C:193:VAL:CG2	2.35	0.56
1:D:223:LEU:HB3	1:D:228:MET:HB2	1.87	0.56
1:A:123:PRO:HB3	4:E:1451:PG4:H52	1.87	0.56

Continued on next page...

Continued from previous page...

Atom-1	Atom-2	Interatomic distance (Å)	Clash overlap (Å)
1:A:207:ARG:HB3	1:A:208:PRO:HD3	1.87	0.56
1:E:64:ARG:HD3	1:E:66:VAL:HG23	1.86	0.56
1:A:220:GLU:OE2	1:A:224:LYS:HD3	2.04	0.56
1:D:230:PHE:HD1	1:D:256:ALA:HB2	1.55	0.56
1:D:369:GLY:O	1:D:370:LYS:HB2	2.06	0.56
1:D:259:ILE:HG22	1:D:260:THR:N	2.21	0.56
1:D:327:LEU:HD23	1:D:327:LEU:C	2.26	0.56
1:D:236:SER:CB	1:D:260:THR:HG1	2.16	0.55
1:E:12:ASN:ND2	5:E:2004:HOH:O	2.29	0.55
1:C:64:ARG:HD3	1:C:66:VAL:CG2	2.37	0.55
2:C:1448:GOL:O3	5:C:2141:HOH:O	2.11	0.55
1:E:48:MET:HA	1:F:74:ILE:HD12	1.89	0.55
1:E:26:GLN:HG3	1:E:30:GLU:OE2	2.06	0.55
1:D:311:TRP:CD1	1:D:327:LEU:HA	2.42	0.55
1:C:292:ARG:NH1	5:C:2117:HOH:O	2.41	0.54
1:D:225[B]:ARG:NH2	1:D:422:GLN:HA	2.23	0.54
1:D:311:TRP:HA	1:D:311:TRP:CE3	2.43	0.54
1:D:222:MET:HG2	1:D:365:LEU:HD23	1.90	0.54
4:E:1451:PG4:H11	5:E:2060:HOH:O	2.07	0.54
1:D:230:PHE:HB3	1:D:255:GLY:C	2.28	0.53
1:E:305:LEU:HB3	1:E:308:GLN:HG3	1.90	0.53
1:D:64:ARG:HD3	1:D:66:VAL:CG2	2.38	0.53
1:E:50:LEU:HD21	1:E:438:ALA:HB1	1.89	0.53
1:C:64:ARG:HD3	1:C:66:VAL:HG23	1.91	0.53
1:D:230:PHE:CE2	1:D:254:PHE:HD2	2.27	0.53
1:D:343:VAL:HG21	1:D:359:PHE:CE2	2.43	0.53
1:B:236:SER:HB3	1:B:315:VAL:HG11	1.90	0.53
1:D:230:PHE:CD2	1:D:254:PHE:HB3	2.43	0.53
3:C:1451:EPE:H71	1:E:145:ARG:CD	2.39	0.52
1:D:258:VAL:HG13	1:D:274:PHE:CD2	2.35	0.52
1:B:66:VAL:HG11	1:D:53:ARG:HD3	1.90	0.52
1:D:353:ILE:O	1:D:355:ALA:N	2.42	0.52
1:D:260:THR:HG21	1:D:310:PRO:HB3	1.91	0.52
1:F:64:ARG:HD3	1:F:66:VAL:HG23	1.92	0.52
1:C:250:LYS:NZ	1:C:253:GLU:OE1	2.36	0.52
1:E:257:ARG:HD3	1:E:271:GLU:O	2.10	0.52
1:D:270:ASP:OD2	1:D:278:LYS:NZ	2.30	0.51
1:B:48:MET:HA	1:D:74:ILE:HD12	1.93	0.51
1:E:53:ARG:HD3	1:F:66:VAL:HG11	1.92	0.51
2:A:1454:GOL:O2	1:C:156:ARG:NH1	2.42	0.51
1:B:49:SER:O	1:B:53:ARG:HG3	2.10	0.51

Continued on next page...

Continued from previous page...

Atom-1	Atom-2	Interatomic distance (Å)	Clash overlap (Å)
1:A:64:ARG:HD3	1:A:66:VAL:HG23	1.92	0.51
1:E:387:ASN:HD22	4:E:1451:PG4:C6	2.18	0.51
1:F:222:MET:CE	1:F:367:ALA:HB2	2.41	0.51
1:D:258:VAL:HG13	1:D:259:ILE:H	1.76	0.51
2:A:1454:GOL:C3	1:E:188:ASN:HB3	2.40	0.51
2:C:1450:GOL:H11	5:C:2012:HOH:O	2.10	0.51
1:D:356:THR:HG22	1:D:359:PHE:H	1.76	0.50
1:D:314:PRO:HB3	1:D:335:LEU:HD23	1.94	0.50
1:D:311:TRP:HE3	1:D:311:TRP:HA	1.76	0.50
1:A:196:GLY:HA2	1:A:207:ARG:HD2	1.94	0.50
1:A:224:LYS:HD2	1:A:228:MET:O	2.12	0.50
1:D:221:ALA:HB2	1:D:407:LEU:CD2	2.41	0.50
1:A:66:VAL:HG11	1:C:53:ARG:HD3	1.93	0.49
2:A:1454:GOL:C2	1:C:156:ARG:HH11	2.23	0.49
1:D:266:GLY:HA3	1:D:304:TYR:CZ	2.47	0.49
1:C:250:LYS:CD	1:C:253:GLU:OE1	2.61	0.49
1:D:277:GLU:O	1:D:278:LYS:CB	2.60	0.49
1:D:225[B]:ARG:HB2	1:D:225[B]:ARG:HH11	1.76	0.49
1:A:329:VAL:HG23	1:A:330:ASP:N	2.28	0.49
1:B:234:ARG:HG2	1:B:257:ARG:HE	1.78	0.49
1:E:267:THR:HG22	1:E:268:VAL:N	2.28	0.49
1:B:207:ARG:HB3	1:B:208:PRO:HD3	1.94	0.49
1:A:123:PRO:HB3	4:E:1451:PG4:C5	2.43	0.49
1:D:257:ARG:HA	1:D:258:VAL:CG2	2.37	0.49
1:A:277:GLU:OE1	1:A:277:GLU:N	2.26	0.48
1:D:277:GLU:O	1:D:278:LYS:HB2	2.13	0.48
1:B:113:GLN:OE1	5:B:2057:HOH:O	2.20	0.48
1:B:64:ARG:HD3	1:B:66:VAL:HG23	1.96	0.48
1:D:225[B]:ARG:HH21	1:D:423:THR:H	1.62	0.48
1:D:236:SER:C	1:D:260:THR:OG1	2.52	0.47
1:D:311:TRP:HB3	1:D:331:ALA:HB2	1.96	0.47
4:E:1451:PG4:H82	5:E:2066:HOH:O	2.15	0.47
1:E:220:GLU:O	1:E:224:LYS:HG2	2.15	0.47
1:A:333:HIS:CD2	1:A:358:LEU:HD21	2.49	0.47
1:D:263:ASP:C	1:D:265:SER:H	2.18	0.47
1:A:49:SER:O	1:A:53:ARG:HG3	2.15	0.47
1:C:50:LEU:HD21	1:C:438:ALA:HB1	1.96	0.47
1:A:123:PRO:CB	4:E:1451:PG4:H51	2.45	0.47
1:D:235:VAL:CG1	1:D:258:VAL:H	2.26	0.47
1:E:23:GLU:OE2	5:E:2014:HOH:O	2.19	0.47
1:C:68:VAL:HB	3:C:1451:EPE:C8	2.43	0.47

Continued on next page...

Continued from previous page...

Atom-1	Atom-2	Interatomic distance (Å)	Clash overlap (Å)
3:C:1451:EPE:H71	1:E:145:ARG:NE	2.29	0.47
1:D:209:GLU:HG3	1:D:246:TYR:CD1	2.50	0.46
1:D:263:ASP:C	1:D:265:SER:N	2.68	0.46
1:A:275:THR:CB	1:A:277:GLU:OE1	2.63	0.46
1:D:216:VAL:HG12	1:D:254:PHE:HE2	1.81	0.46
1:D:313:LEU:CD2	1:D:314:PRO:HA	2.42	0.46
1:C:152:THR:HG22	1:E:185:LYS:HE3	1.97	0.46
1:B:53:ARG:HD3	1:D:66:VAL:HG11	1.98	0.46
2:A:1454:GOL:C3	1:E:188:ASN:HD22	2.29	0.46
1:C:34:THR:CG2	1:C:427:GLN:HA	2.46	0.46
1:D:309:GLN:HB3	1:D:310:PRO:CD	2.46	0.46
1:E:21:GLN:HG2	1:E:104:SER:HB2	1.99	0.45
1:E:184:LYS:CE	4:E:1451:PG4:H12	2.46	0.45
1:E:48:MET:CA	1:F:74:ILE:HD12	2.46	0.45
1:B:241:GLY:O	1:B:245:GLN:HG3	2.16	0.45
1:D:230:PHE:HB2	1:D:254:PHE:HB3	1.98	0.45
1:D:323:THR:HB	1:D:326:GLU:CD	2.36	0.45
1:B:324:GLN:NE2	1:B:349:MET:SD	2.90	0.45
1:C:72:ASN:HD22	2:C:1449:GOL:H12	1.81	0.45
1:D:49:SER:O	1:D:53:ARG:HG3	2.16	0.45
5:E:2091:HOH:O	1:F:64:ARG:HD2	2.16	0.45
1:C:349:MET:N	1:C:350:PRO:HD3	2.32	0.45
1:D:329:VAL:O	1:D:330:ASP:HB3	2.17	0.45
1:D:352:THR:O	1:D:355:ALA:HB2	2.17	0.45
1:A:88:ILE:HD11	1:A:436:LYS:HG3	1.98	0.45
1:D:234:ARG:HD3	1:D:340:VAL:HA	1.98	0.44
1:B:17:ARG:HB3	1:D:78:ARG:NH1	2.33	0.44
1:F:277:GLU:OE1	1:F:277:GLU:N	2.47	0.44
1:F:329:VAL:HG13	1:F:358:LEU:CD1	2.47	0.44
1:E:88:ILE:CD1	1:E:436:LYS:HD2	2.47	0.44
1:F:46:ARG:NE	2:F:1449:GOL:H11	2.33	0.44
1:B:348:ASN:C	1:B:349:MET:HG2	2.36	0.44
1:D:356:THR:HG21	1:D:359:PHE:CD2	2.53	0.44
3:C:1451:EPE:H71	1:E:145:ARG:NH1	2.31	0.44
1:D:260:THR:HG22	1:D:310:PRO:HB3	1.99	0.44
1:D:233:MET:HB2	1:D:234:ARG:H	1.39	0.44
1:D:274:PHE:HE2	5:D:2080:HOH:O	2.01	0.44
1:B:174:ARG:HD2	1:B:175:GLU:OE2	2.18	0.44
1:D:117:ASN:OD1	1:D:377:VAL:HG21	2.16	0.44
1:D:324:GLN:O	1:D:325:ASN:HB2	2.17	0.44
1:A:34:THR:HG21	1:A:427:GLN:HA	1.99	0.44

Continued on next page...

Continued from previous page...

Atom-1	Atom-2	Interatomic distance (Å)	Clash overlap (Å)
1:C:59:ARG:HD2	1:C:83:GLN:OE1	2.18	0.43
1:D:356:THR:C	1:D:358:LEU:H	2.20	0.43
1:D:230:PHE:CA	1:D:232:GLY:H	1.97	0.43
1:D:257:ARG:NH2	5:D:2078:HOH:O	2.50	0.43
1:B:324:GLN:HG3	1:B:349:MET:HG3	1.99	0.43
1:D:233:MET:SD	1:D:234:ARG:NH2	2.92	0.43
1:D:216:VAL:HG12	1:D:254:PHE:CE2	2.53	0.43
1:A:117:ASN:OD1	1:A:377:VAL:HG21	2.18	0.43
1:D:205:LEU:O	1:D:206:ILE:HB	2.17	0.43
1:D:332:ALA:HB1	1:D:356:THR:HG23	2.00	0.43
1:D:359:PHE:HB3	1:D:364:VAL:HB	2.00	0.43
1:E:49:SER:O	1:E:53:ARG:HG3	2.19	0.43
1:F:244:ALA:O	1:F:248:ILE:HG13	2.18	0.43
1:A:259:ILE:HG13	1:A:260:THR:HG23	2.00	0.43
1:A:349:MET:N	1:A:350:PRO:CD	2.82	0.43
1:D:327:LEU:HD23	1:D:327:LEU:O	2.18	0.43
1:F:329:VAL:HG13	1:F:358:LEU:HD11	2.01	0.43
1:A:34:THR:CG2	1:A:427:GLN:HA	2.49	0.43
1:D:223:LEU:HD11	1:D:342:ALA:CB	2.49	0.43
1:C:93:GLY:HA3	1:C:127:GLY:O	2.18	0.42
5:B:2028:HOH:O	1:D:64:ARG:NH2	2.52	0.42
1:A:53:ARG:HD3	1:C:66:VAL:HG11	2.01	0.42
1:D:15:GLN:HG3	1:D:15:GLN:O	2.18	0.42
1:D:314:PRO:HG3	1:D:335:LEU:N	2.34	0.42
1:E:205:LEU:O	1:E:206:ILE:HB	2.19	0.42
1:D:252:MET:C	1:D:254:PHE:H	2.23	0.42
1:D:311:TRP:CE3	1:D:311:TRP:CA	3.03	0.42
1:D:207:ARG:HB3	1:D:208:PRO:HD3	2.00	0.42
1:A:183:MET:HG2	1:A:193:VAL:HG11	2.02	0.42
1:E:117:ASN:OD1	1:E:377:VAL:HG21	2.18	0.42
1:F:98:HIS:CG	1:F:99:PRO:HD2	2.55	0.42
2:A:1452:GOL:O3	5:A:2157:HOH:O	2.20	0.42
1:C:78:ARG:CD	1:C:80:TRP:CZ2	3.02	0.42
1:D:256:ALA:C	1:D:257:ARG:HG3	2.38	0.42
1:C:248:ILE:HG12	1:C:258:VAL:HG11	2.02	0.42
1:E:240:SER:OG	1:E:286:LYS:HE3	2.20	0.42
1:D:231:GLU:HA	1:D:255:GLY:O	2.19	0.42
1:F:109:LEU:HB2	1:F:128:LYS:HG2	2.02	0.42
1:D:313:LEU:HD22	1:D:313:LEU:C	2.41	0.41
1:E:207:ARG:HB3	1:E:208:PRO:HD3	2.02	0.41
1:D:222:MET:HE1	1:D:365:LEU:C	2.41	0.41

Continued on next page...

Continued from previous page...

Atom-1	Atom-2	Interatomic distance (Å)	Clash overlap (Å)
1:D:421:GLU:O	1:D:422:GLN:CB	2.67	0.41
1:B:109:LEU:O	1:B:113:GLN:HB2	2.21	0.41
1:D:64:ARG:HD3	1:D:66:VAL:HG23	2.02	0.41
2:C:1448:GOL:H32	1:F:123:PRO:HB3	2.01	0.41
1:A:185:LYS:O	1:B:156:ARG:NH2	2.54	0.41
1:D:215:LEU:HD13	1:D:345:GLU:O	2.20	0.41
1:D:222:MET:HE3	1:D:366:PHE:O	2.21	0.41
1:E:62:GLN:NE2	5:E:2033:HOH:O	2.53	0.41
1:C:347:ALA:HB3	1:C:350:PRO:HG3	2.03	0.41
1:D:256:ALA:C	1:D:257:ARG:CG	2.89	0.41
1:D:259:ILE:HG22	1:D:260:THR:H	1.84	0.41
1:D:260:THR:HG22	1:D:267:THR:CG2	2.50	0.41
1:B:50:LEU:HD21	1:B:438:ALA:HB1	2.02	0.41
2:C:1450:GOL:C1	5:C:2012:HOH:O	2.68	0.41
1:B:329:VAL:CG1	1:B:354:GLU:HG2	2.51	0.41
1:D:393:TRP:HB3	1:D:397:LYS:HD3	2.01	0.41
1:E:328:ASP:OD1	1:E:329:VAL:N	2.49	0.41
1:B:240:SER:OG	1:B:286:LYS:HE2	2.21	0.41
1:D:258:VAL:CG2	1:D:274:PHE:HB2	2.47	0.41
1:D:427:GLN:HG2	1:D:431:ILE:HD12	2.03	0.41
1:B:422:GLN:O	5:B:2143:HOH:O	2.22	0.41
1:D:329:VAL:O	1:D:330:ASP:CB	2.69	0.41
1:D:311:TRP:HB3	1:D:331:ALA:CB	2.51	0.41
1:F:258:VAL:N	5:F:2079:HOH:O	2.43	0.41
1:C:236:SER:HB3	1:C:315:VAL:HG11	2.02	0.40
1:D:266:GLY:CA	1:D:304:TYR:CE1	3.02	0.40
1:C:98:HIS:CG	1:C:99:PRO:HD2	2.55	0.40
1:D:230:PHE:CD2	1:D:254:PHE:CD2	3.10	0.40
1:E:203:GLY:O	5:E:2066:HOH:O	2.22	0.40
1:E:95:MET:O	1:E:168:ASP:HB3	2.21	0.40
1:C:250:LYS:HA	1:C:250:LYS:HD3	1.91	0.40
1:C:259:ILE:HG13	1:C:260:THR:HG23	2.03	0.40
1:D:310:PRO:O	1:D:313:LEU:HB3	2.22	0.40

All (2) symmetry-related close contacts are listed below. The label for Atom-2 includes the symmetry operator and encoded unit-cell translations to be applied.

Atom-1	Atom-2	Interatomic distance (Å)	Clash overlap (Å)
5:C:2125:HOH:O	5:E:2030:HOH:O[4_545]	2.12	0.08
1:E:224:LYS:HZ3	1:F:421:GLU:OE2[1_455]	1.55	0.05

5.3 Torsion angles

5.3.1 Protein backbone

In the following table, the Percentiles column shows the percent Ramachandran outliers of the chain as a percentile score with respect to all X-ray entries followed by that with respect to entries of similar resolution.

The Analysed column shows the number of residues for which the backbone conformation was analysed, and the total number of residues.

Mol	Chain	Analysed	Favoured	Allowed	Outliers	Percentiles	
1	A	444/447 (99%)	435 (98%)	7 (2%)	2 (0%)	29	48
1	B	441/447 (99%)	432 (98%)	7 (2%)	2 (0%)	29	48
1	C	441/447 (99%)	432 (98%)	7 (2%)	2 (0%)	29	48
1	D	436/447 (98%)	363 (83%)	43 (10%)	30 (7%)	1	1
1	E	440/447 (98%)	429 (98%)	10 (2%)	1 (0%)	47	68
1	F	442/447 (99%)	434 (98%)	6 (1%)	2 (0%)	29	48
All	All	2644/2682 (99%)	2525 (96%)	80 (3%)	39 (2%)	10	18

All (39) Ramachandran outliers are listed below:

Mol	Chain	Res	Type
1	A	206	ILE
1	B	206	ILE
1	C	206	ILE
1	D	206	ILE
1	D	226	HIS
1	D	228	MET
1	D	234	ARG
1	D	258	VAL
1	D	259	ILE
1	D	264	SER
1	D	276	LYS
1	D	305	LEU
1	D	306	GLU
1	D	330	ASP
1	E	206	ILE
1	F	206	ILE
1	F	307	GLY
1	A	307	GLY
1	B	307	GLY
1	C	307	GLY

Continued on next page...

Continued from previous page...

Mol	Chain	Res	Type
1	D	168	ASP
1	D	224	LYS
1	D	278	LYS
1	D	291	GLY
1	D	325	ASN
1	D	370	LYS
1	D	424	ASN
1	D	292	ARG
1	D	303	VAL
1	D	307	GLY
1	D	314	PRO
1	D	354	GLU
1	D	232	GLY
1	D	251	ALA
1	D	255	GLY
1	D	422	GLN
1	D	365	LEU
1	D	301	GLY
1	D	227	GLY

5.3.2 Protein sidechains ⓘ

In the following table, the Percentiles column shows the percent sidechain outliers of the chain as a percentile score with respect to all X-ray entries followed by that with respect to entries of similar resolution.

The Analysed column shows the number of residues for which the sidechain conformation was analysed, and the total number of residues.

Mol	Chain	Analysed	Rotameric	Outliers	Percentiles	
1	A	350/351 (100%)	349 (100%)	1 (0%)	92	97
1	B	347/351 (99%)	344 (99%)	3 (1%)	78	92
1	C	347/351 (99%)	345 (99%)	2 (1%)	86	95
1	D	345/351 (98%)	324 (94%)	21 (6%)	18	36
1	E	346/351 (99%)	341 (99%)	5 (1%)	67	86
1	F	348/351 (99%)	346 (99%)	2 (1%)	86	95
All	All	2083/2106 (99%)	2049 (98%)	34 (2%)	62	84

All (34) residues with a non-rotameric sidechain are listed below:

Mol	Chain	Res	Type
1	A	108	PHE
1	B	108	PHE
1	B	224	LYS
1	B	313	LEU
1	C	84	PHE
1	C	108	PHE
1	D	47	GLN
1	D	84	PHE
1	D	108	PHE
1	D	225[A]	ARG
1	D	225[B]	ARG
1	D	228	MET
1	D	233	MET
1	D	234	ARG
1	D	260	THR
1	D	274	PHE
1	D	286	LYS
1	D	290	ASP
1	D	302	LEU
1	D	313	LEU
1	D	323	THR
1	D	325	ASN
1	D	328	ASP
1	D	338	ASN
1	D	357	GLU
1	D	370	LYS
1	D	396	GLU
1	E	108	PHE
1	E	152	THR
1	E	207	ARG
1	E	365	LEU
1	E	436	LYS
1	F	84	PHE
1	F	108	PHE

Some sidechains can be flipped to improve hydrogen bonding and reduce clashes. All (11) such sidechains are listed below:

Mol	Chain	Res	Type
1	A	242	ASN
1	A	333	HIS
1	B	324	GLN
1	C	72	ASN
1	C	73	GLN

Continued on next page...

Continued from previous page...

Mol	Chain	Res	Type
1	D	309	GLN
1	E	62	GLN
1	E	188	ASN
1	E	242	ASN
1	E	387	ASN
1	F	334	GLN

5.3.3 RNA ⓘ

There are no RNA molecules in this entry.

5.4 Non-standard residues in protein, DNA, RNA chains ⓘ

There are no non-standard protein/DNA/RNA residues in this entry.

5.5 Carbohydrates ⓘ

There are no carbohydrates in this entry.

5.6 Ligand geometry ⓘ

20 ligands are modelled in this entry.

In the following table, the Counts columns list the number of bonds (or angles) for which Mogul statistics could be retrieved, the number of bonds (or angles) that are observed in the model and the number of bonds (or angles) that are defined in the Chemical Component Dictionary. The Link column lists molecule types, if any, to which the group is linked. The Z score for a bond length (or angle) is the number of standard deviations the observed value is removed from the expected value. A bond length (or angle) with $|Z| > 2$ is considered an outlier worth inspection. RMSZ is the root-mean-square of all Z scores of the bond lengths (or angles).

Mol	Type	Chain	Res	Link	Bond lengths			Bond angles		
					Counts	RMSZ	$\# Z > 2$	Counts	RMSZ	$\# Z > 2$
2	GOL	A	1451	-	5,5,5	0.49	0	5,5,5	1.47	0
2	GOL	A	1449	-	5,5,5	0.33	0	5,5,5	0.97	0
2	GOL	C	1449	-	5,5,5	0.42	0	5,5,5	0.90	0
2	GOL	E	1449	-	5,5,5	0.47	0	5,5,5	0.56	0
3	EPE	C	1451	-	15,15,15	1.49	3 (20%)	18,20,20	2.96	9 (50%)
2	GOL	C	1450	-	5,5,5	0.23	0	5,5,5	0.71	0
4	PG4	E	1451	-	12,12,12	0.97	1 (8%)	11,11,11	0.69	0

Mol	Type	Chain	Res	Link	Bond lengths			Bond angles		
					Counts	RMSZ	# Z > 2	Counts	RMSZ	# Z > 2
2	GOL	D	1450	-	5,5,5	0.43	0	5,5,5	0.73	0
2	GOL	A	1453	-	5,5,5	0.39	0	5,5,5	0.54	0
2	GOL	A	1454	-	5,5,5	0.67	0	5,5,5	1.26	0
2	GOL	D	1449	-	5,5,5	0.44	0	5,5,5	0.49	0
2	GOL	F	1449	-	5,5,5	0.41	0	5,5,5	0.76	0
2	GOL	A	1448	-	5,5,5	0.71	0	5,5,5	0.96	0
2	GOL	A	1450	-	5,5,5	0.34	0	5,5,5	0.60	0
2	GOL	C	1448	-	5,5,5	0.63	0	5,5,5	0.69	0
2	GOL	A	1452	-	5,5,5	0.40	0	5,5,5	0.42	0
2	GOL	E	1448	-	5,5,5	0.43	0	5,5,5	0.97	0
2	GOL	E	1450	-	5,5,5	0.55	0	5,5,5	0.97	0
2	GOL	D	1448	-	5,5,5	0.38	0	5,5,5	0.33	0
2	GOL	F	1448	-	5,5,5	0.38	0	5,5,5	0.48	0

In the following table, the Chirals column lists the number of chiral outliers, the number of chiral centers analysed, the number of these observed in the model and the number defined in the Chemical Component Dictionary. Similar counts are reported in the Torsion and Rings columns. '-' means no outliers of that kind were identified.

Mol	Type	Chain	Res	Link	Chirals	Torsions	Rings
2	GOL	A	1451	-	-	4/4/4/4	-
2	GOL	A	1449	-	-	2/4/4/4	-
2	GOL	C	1449	-	-	2/4/4/4	-
2	GOL	E	1449	-	-	2/4/4/4	-
3	EPE	C	1451	-	-	3/9/19/19	0/1/1/1
2	GOL	C	1450	-	-	2/4/4/4	-
4	PG4	E	1451	-	-	7/10/10/10	-
2	GOL	D	1450	-	-	4/4/4/4	-
2	GOL	A	1453	-	-	2/4/4/4	-
2	GOL	A	1454	-	-	1/4/4/4	-
2	GOL	D	1449	-	-	2/4/4/4	-
2	GOL	F	1449	-	-	3/4/4/4	-
2	GOL	A	1448	-	-	2/4/4/4	-
2	GOL	A	1450	-	-	0/4/4/4	-
2	GOL	C	1448	-	-	2/4/4/4	-
2	GOL	A	1452	-	-	0/4/4/4	-
2	GOL	E	1448	-	-	2/4/4/4	-
2	GOL	E	1450	-	-	4/4/4/4	-
2	GOL	D	1448	-	-	1/4/4/4	-

Continued on next page...

Continued from previous page...

Mol	Type	Chain	Res	Link	Chirals	Torsions	Rings
2	GOL	F	1448	-	-	2/4/4/4	-

All (4) bond length outliers are listed below:

Mol	Chain	Res	Type	Atoms	Z	Observed(Å)	Ideal(Å)
3	C	1451	EPE	C7-N4	-2.88	1.40	1.47
3	C	1451	EPE	O1S-S	2.68	1.52	1.45
3	C	1451	EPE	C7-C8	2.25	1.60	1.51
4	E	1451	PG4	O2-C2	2.16	1.51	1.42

All (9) bond angle outliers are listed below:

Mol	Chain	Res	Type	Atoms	Z	Observed(°)	Ideal(°)
3	C	1451	EPE	C6-N1-C2	6.35	123.12	108.83
3	C	1451	EPE	C5-N4-C3	5.48	121.17	108.83
3	C	1451	EPE	C7-N4-C5	4.39	122.46	111.23
3	C	1451	EPE	O1S-S-C10	3.63	111.29	106.92
3	C	1451	EPE	O3S-S-O1S	-3.42	102.92	111.27
3	C	1451	EPE	C8-C7-N4	3.07	124.41	113.40
3	C	1451	EPE	C3-C2-N1	2.59	115.96	110.64
3	C	1451	EPE	O3S-S-C10	2.59	109.96	105.77
3	C	1451	EPE	C9-N1-C2	2.18	116.81	111.23

There are no chirality outliers.

All (47) torsion outliers are listed below:

Mol	Chain	Res	Type	Atoms
2	A	1451	GOL	O1-C1-C2-C3
2	C	1449	GOL	O1-C1-C2-C3
2	E	1449	GOL	O1-C1-C2-C3
3	C	1451	EPE	C8-C7-N4-C5
2	D	1450	GOL	O1-C1-C2-C3
2	D	1449	GOL	O1-C1-C2-O2
2	D	1449	GOL	O1-C1-C2-C3
2	F	1449	GOL	O1-C1-C2-C3
2	A	1448	GOL	O1-C1-C2-O2
2	A	1448	GOL	O1-C1-C2-C3
2	E	1448	GOL	C1-C2-C3-O3
2	E	1450	GOL	O1-C1-C2-C3
2	E	1450	GOL	C1-C2-C3-O3
2	A	1449	GOL	O1-C1-C2-O2

Continued on next page...

Continued from previous page...

Mol	Chain	Res	Type	Atoms
3	C	1451	EPE	N4-C7-C8-O8
4	E	1451	PG4	O1-C1-C2-O2
2	A	1451	GOL	C1-C2-C3-O3
2	A	1449	GOL	O1-C1-C2-C3
2	C	1450	GOL	O1-C1-C2-C3
2	D	1450	GOL	C1-C2-C3-O3
2	C	1448	GOL	O1-C1-C2-C3
2	F	1448	GOL	C1-C2-C3-O3
4	E	1451	PG4	O3-C5-C6-O4
4	E	1451	PG4	C4-C3-O2-C2
2	A	1451	GOL	O2-C2-C3-O3
2	C	1449	GOL	O1-C1-C2-O2
2	D	1450	GOL	O1-C1-C2-O2
2	E	1450	GOL	O1-C1-C2-O2
2	A	1451	GOL	O1-C1-C2-O2
2	F	1449	GOL	O1-C1-C2-O2
2	C	1448	GOL	O1-C1-C2-O2
2	E	1448	GOL	O2-C2-C3-O3
2	E	1450	GOL	O2-C2-C3-O3
2	D	1448	GOL	C1-C2-C3-O3
3	C	1451	EPE	C10-C9-N1-C6
2	A	1454	GOL	O1-C1-C2-O2
2	E	1449	GOL	O1-C1-C2-O2
2	A	1453	GOL	O1-C1-C2-O2
2	F	1449	GOL	O2-C2-C3-O3
4	E	1451	PG4	C1-C2-O2-C3
2	C	1450	GOL	O1-C1-C2-O2
2	D	1450	GOL	O2-C2-C3-O3
2	F	1448	GOL	O2-C2-C3-O3
4	E	1451	PG4	C3-C4-O3-C5
4	E	1451	PG4	C5-C6-O4-C7
2	A	1453	GOL	O1-C1-C2-C3
4	E	1451	PG4	O2-C3-C4-O3

There are no ring outliers.

9 monomers are involved in 32 short contacts:

Mol	Chain	Res	Type	Clashes	Symm-Clashes
2	A	1451	GOL	1	0
2	C	1449	GOL	1	0
3	C	1451	EPE	8	0
2	C	1450	GOL	2	0

Continued on next page...

Continued from previous page...

Mol	Chain	Res	Type	Clashes	Symm-Clashes
4	E	1451	PG4	11	0
2	A	1454	GOL	5	0
2	F	1449	GOL	1	0
2	C	1448	GOL	2	0
2	A	1452	GOL	1	0

5.7 Other polymers [i](#)

There are no such residues in this entry.

5.8 Polymer linkage issues [i](#)

There are no chain breaks in this entry.

6 Fit of model and data ⓘ

6.1 Protein, DNA and RNA chains ⓘ

In the following table, the column labelled ‘#RSRZ> 2’ contains the number (and percentage) of RSRZ outliers, followed by percent RSRZ outliers for the chain as percentile scores relative to all X-ray entries and entries of similar resolution. The OWAB column contains the minimum, median, 95th percentile and maximum values of the occupancy-weighted average B-factor per residue. The column labelled ‘Q< 0.9’ lists the number of (and percentage) of residues with an average occupancy less than 0.9.

Mol	Chain	Analysed	<RSRZ>	#RSRZ>2		OWAB(Å ²)	Q<0.9
1	A	442/447 (98%)	-0.10	1 (0%)	95 95	21, 34, 57, 117	0
1	B	442/447 (98%)	-0.15	2 (0%)	91 91	20, 32, 57, 129	0
1	C	442/447 (98%)	-0.13	1 (0%)	95 95	22, 31, 48, 78	0
1	D	439/447 (98%)	0.66	71 (16%)	1 1	21, 44, 104, 149	0
1	E	442/447 (98%)	0.10	7 (1%)	72 74	21, 39, 75, 116	0
1	F	442/447 (98%)	-0.00	5 (1%)	80 82	20, 36, 68, 120	0
All	All	2649/2682 (98%)	0.06	87 (3%)	46 50	20, 34, 79, 149	0

All (87) RSRZ outliers are listed below:

Mol	Chain	Res	Type	RSRZ
1	D	226	HIS	10.1
1	D	353	ILE	6.3
1	F	289	ARG	6.1
1	D	279	LEU	6.1
1	D	365	LEU	5.7
1	D	306	GLU	5.5
1	D	342	ALA	5.5
1	D	260	THR	5.3
1	D	329	VAL	5.3
1	D	223	LEU	5.0
1	D	229	GLY	4.8
1	D	308	GLN	4.7
1	D	352	THR	4.6
1	D	304	TYR	4.1
1	D	230	PHE	4.1
1	D	327	LEU	4.0
1	D	294	ALA	4.0
1	D	255	GLY	4.0
1	D	273	GLY	4.0

Continued on next page...

Continued from previous page...

Mol	Chain	Res	Type	RSRZ
1	D	344	ALA	4.0
1	D	269	VAL	3.8
1	D	268	VAL	3.7
1	D	303	VAL	3.7
1	D	290	ASP	3.6
1	D	326	GLU	3.6
1	D	341	LYS	3.4
1	D	272	SER	3.4
1	D	340	VAL	3.3
1	D	343	VAL	3.3
1	D	275	THR	3.2
1	D	354	GLU	3.2
1	D	359	PHE	3.1
1	F	26	GLN	3.1
1	D	420	GLY	3.0
1	D	336	ILE	3.0
1	D	257	ARG	3.0
1	D	256	ALA	3.0
1	D	364	VAL	2.9
1	D	307	GLY	2.9
1	D	422	GLN	2.9
1	D	289	ARG	2.8
1	D	233	MET	2.8
1	D	239	GLY	2.8
1	D	421	GLU	2.7
1	D	339	GLY	2.7
1	D	312	SER	2.7
1	E	284	GLU	2.7
1	D	335	LEU	2.7
1	E	26	GLN	2.7
1	D	311	TRP	2.6
1	D	351	THR	2.6
1	D	292	ARG	2.6
1	D	366	PHE	2.5
1	D	270	ASP	2.5
1	F	299	GLU	2.5
1	D	309	GLN	2.5
1	D	236	SER	2.5
1	D	221	ALA	2.4
1	D	281	ARG	2.4
1	A	7	LEU	2.4
1	B	257	ARG	2.4

Continued on next page...

Continued from previous page...

Mol	Chain	Res	Type	RSRZ
1	D	315	VAL	2.3
1	D	276	LYS	2.3
1	E	230	PHE	2.3
1	C	289	ARG	2.3
1	F	305	LEU	2.3
1	D	325	ASN	2.2
1	D	296	TYR	2.2
1	D	429	ALA	2.2
1	D	247	ALA	2.2
1	D	216	VAL	2.2
1	D	350	PRO	2.2
1	F	294	ALA	2.1
1	D	293	VAL	2.1
1	D	305	LEU	2.1
1	E	298	LYS	2.1
1	D	414	VAL	2.1
1	E	353	ILE	2.1
1	E	228	MET	2.1
1	D	360	GLN	2.1
1	D	358	LEU	2.0
1	B	289	ARG	2.0
1	D	271	GLU	2.0
1	D	368	PRO	2.0
1	E	360	GLN	2.0
1	D	258	VAL	2.0
1	D	283	ILE	2.0

6.2 Non-standard residues in protein, DNA, RNA chains [i](#)

There are no non-standard protein/DNA/RNA residues in this entry.

6.3 Carbohydrates [i](#)

There are no carbohydrates in this entry.

6.4 Ligands [i](#)

In the following table, the Atoms column lists the number of modelled atoms in the group and the number defined in the chemical component dictionary. The B-factors column lists the minimum, median, 95th percentile and maximum values of B factors of atoms in the group. The column labelled 'Q< 0.9' lists the number of atoms with occupancy less than 0.9.

Mol	Type	Chain	Res	Atoms	RSCC	RSR	B-factors(\AA^2)	Q<0.9
4	PG4	E	1451	13/13	0.87	0.24	43,59,71,77	0
2	GOL	A	1454	6/6	0.87	0.29	58,69,82,82	0
2	GOL	F	1449	6/6	0.87	0.21	43,63,86,86	0
2	GOL	A	1448	6/6	0.88	0.21	47,62,71,79	0
2	GOL	A	1453	6/6	0.89	0.40	55,66,75,79	0
2	GOL	A	1451	6/6	0.89	0.33	40,49,65,66	0
2	GOL	C	1450	6/6	0.90	0.16	47,64,77,77	0
2	GOL	A	1450	6/6	0.90	0.34	47,57,64,65	0
2	GOL	A	1449	6/6	0.90	0.18	48,58,69,73	0
2	GOL	D	1450	6/6	0.91	0.15	42,55,70,70	0
2	GOL	D	1449	6/6	0.91	0.31	30,43,53,57	0
2	GOL	C	1449	6/6	0.92	0.19	37,54,65,69	0
2	GOL	E	1449	6/6	0.92	0.38	46,58,69,70	0
3	EPE	C	1451	15/15	0.93	0.26	37,52,73,83	0
2	GOL	A	1452	6/6	0.93	0.40	48,64,77,83	0
2	GOL	E	1450	6/6	0.93	0.23	48,59,63,75	0
2	GOL	F	1448	6/6	0.93	0.36	53,64,68,69	0
2	GOL	D	1448	6/6	0.94	0.22	30,41,49,52	0
2	GOL	E	1448	6/6	0.95	0.29	32,46,59,64	0
2	GOL	C	1448	6/6	0.95	0.18	42,52,68,82	0

6.5 Other polymers ⓘ

There are no such residues in this entry.