



Full wwPDB X-ray Structure Validation Report ⓘ

Nov 2, 2021 – 05:15 AM EDT

PDB ID : 3BMW
Title : Cyclodextrin glycosyl transferase from Thermoanaerobacterium thermosulfurigenes EM1 mutant S77P complexed with a maltoheptaose inhibitor
Authors : Rozeboom, H.J.; van Oosterwijk, N.; Dijkstra, B.W.
Deposited on : 2007-12-13
Resolution : 1.60 Å(reported)

This is a Full wwPDB X-ray Structure Validation Report for a publicly released PDB entry.

We welcome your comments at validation@mail.wwpdb.org

A user guide is available at

<https://www.wwpdb.org/validation/2017/XrayValidationReportHelp>

with specific help available everywhere you see the ⓘ symbol.

The following versions of software and data (see [references ⓘ](#)) were used in the production of this report:

MolProbity : 4.02b-467
Mogul : 1.8.5 (274361), CSD as541be (2020)
Xtriage (Phenix) : 1.13
EDS : 2.23.2
Percentile statistics : 20191225.v01 (using entries in the PDB archive December 25th 2019)
Refmac : 5.8.0158
CCP4 : 7.0.044 (Gargrove)
Ideal geometry (proteins) : Engh & Huber (2001)
Ideal geometry (DNA, RNA) : Parkinson et al. (1996)
Validation Pipeline (wwPDB-VP) : 2.23.2

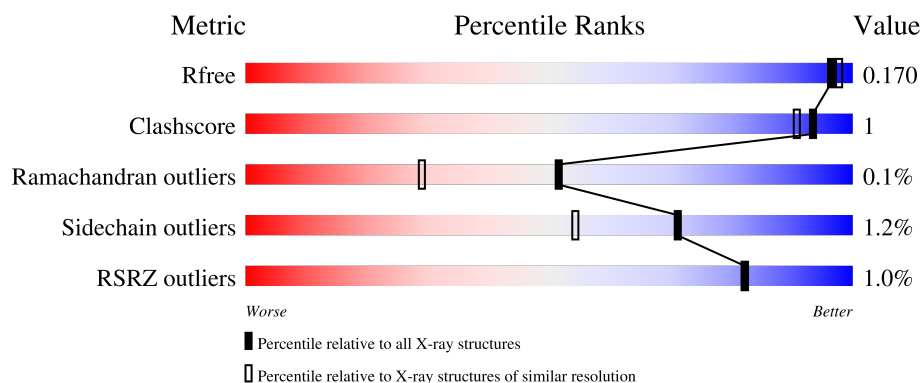
1 Overall quality at a glance

The following experimental techniques were used to determine the structure:

X-RAY DIFFRACTION

The reported resolution of this entry is 1.60 Å.

Percentile scores (ranging between 0-100) for global validation metrics of the entry are shown in the following graphic. The table shows the number of entries on which the scores are based.



Metric	Whole archive (#Entries)	Similar resolution (#Entries, resolution range(Å))
R_{free}	130704	3398 (1.60-1.60)
Clashscore	141614	3665 (1.60-1.60)
Ramachandran outliers	138981	3564 (1.60-1.60)
Sidechain outliers	138945	3563 (1.60-1.60)
RSRZ outliers	127900	3321 (1.60-1.60)

The table below summarises the geometric issues observed across the polymeric chains and their fit to the electron density. The red, orange, yellow and green segments of the lower bar indicate the fraction of residues that contain outliers for ≥ 3 , 2, 1 and 0 types of geometric quality criteria respectively. A grey segment represents the fraction of residues that are not modelled. The numeric value for each fraction is indicated below the corresponding segment, with a dot representing fractions $\leq 5\%$. The upper red bar (where present) indicates the fraction of residues that have poor fit to the electron density. The numeric value is given above the bar.

Mol	Chain	Length	Quality of chain
1	A	683	<div> <div style="width: 97%;"></div> <div>97%</div> </div>
2	B	2	<div> <div style="width: 100%;"></div> <div>100%</div> </div>
3	C	3	<div> <div style="width: 100%;"></div> <div>100%</div> </div>
4	D	3	<div> <div style="width: 33%;"></div> <div>33%</div> <div style="width: 67%;"></div> <div>67%</div> </div>

2 Entry composition [i](#)

There are 10 unique types of molecules in this entry. The entry contains 6689 atoms, of which 0 are hydrogens and 0 are deuteriums.

In the tables below, the ZeroOcc column contains the number of atoms modelled with zero occupancy, the AltConf column contains the number of residues with at least one atom in alternate conformation and the Trace column contains the number of residues modelled with at most 2 atoms.

- Molecule 1 is a protein called Cyclomaltodextrin glucanotransferase.

Mol	Chain	Residues	Atoms					ZeroOcc	AltConf	Trace
			Total	C	N	O	S			
1	A	683	5380	3408	887	1070	15	0	12	0

There is a discrepancy between the modelled and reference sequences:

Chain	Residue	Modelled	Actual	Comment	Reference
A	77	PRO	SER	engineered mutation	UNP P26827

- Molecule 2 is an oligosaccharide called alpha-D-glucopyranose-(1-4)-alpha-D-glucopyranose.



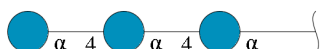
Mol	Chain	Residues	Atoms			ZeroOcc	AltConf	Trace
			Total	C	O			
2	B	2	23	12	11	0	0	0

- Molecule 3 is an oligosaccharide called alpha-D-quinovopyranose-(1-4)-alpha-D-glucopyranose-(1-4)-alpha-D-glucopyranose.



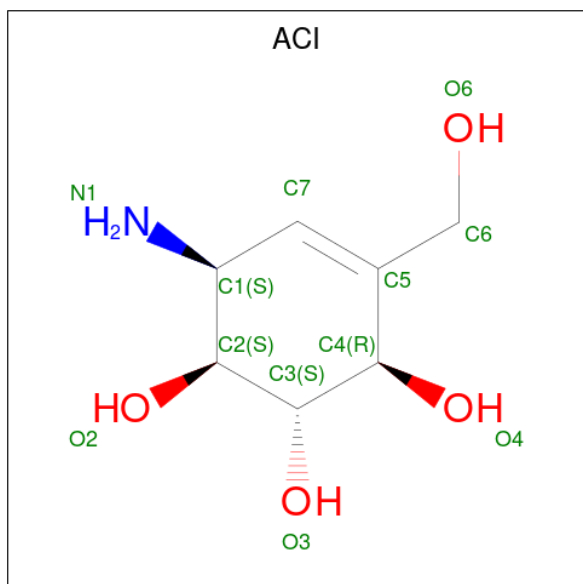
Mol	Chain	Residues	Atoms			ZeroOcc	AltConf	Trace
			Total	C	O			
3	C	3	32	18	14	0	0	0

- Molecule 4 is an oligosaccharide called alpha-D-glucopyranose-(1-4)-alpha-D-glucopyranose-(1-4)-alpha-D-glucopyranose.



Mol	Chain	Residues	Atoms			ZeroOcc	AltConf	Trace
4	D	3	Total	C	O	0	0	0
			34	18	16			

- Molecule 5 is 6-AMINO-4-HYDROXYMETHYL-CYCLOHEX-4-ENE-1,2,3-TRIOL (three-letter code: ACI) (formula: $C_7H_{13}NO_4$).



Mol	Chain	Residues	Atoms				ZeroOcc	AltConf
5	A	1	Total	C	N	O	0	0
			11	7	1	3		

- Molecule 6 is CALCIUM ION (three-letter code: CA) (formula: Ca).

Mol	Chain	Residues	Atoms		ZeroOcc	AltConf
6	A	2	Total	Ca	0	0
			2	2		

- Molecule 7 is CHLORIDE ION (three-letter code: CL) (formula: Cl).

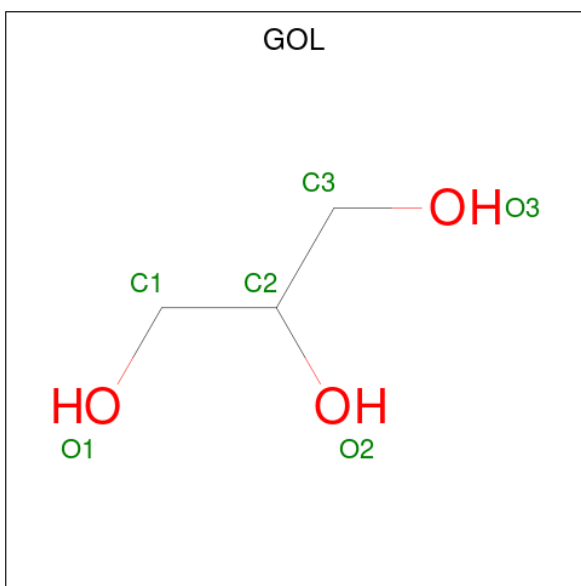
Mol	Chain	Residues	Atoms		ZeroOcc	AltConf
7	A	1	Total	Cl	0	0
			1	1		

- Molecule 8 is SULFATE ION (three-letter code: SO4) (formula: O₄S).



Mol	Chain	Residues	Atoms			ZeroOcc	AltConf
8	A	1	Total	O	S	0	0
			5	4	1		
8	A	1	Total	O	S	0	0
			5	4	1		
8	A	1	Total	O	S	0	0
			5	4	1		

- Molecule 9 is GLYCEROL (three-letter code: GOL) (formula: C₃H₈O₃).



Mol	Chain	Residues	Atoms			ZeroOcc	AltConf
9	A	1	Total	C	O	0	0
			6	3	3		
9	A	1	Total	C	O	0	0
			6	3	3		
9	A	1	Total	C	O	0	0
			6	3	3		
9	A	1	Total	C	O	0	0
			6	3	3		
9	A	1	Total	C	O	0	0
			6	3	3		

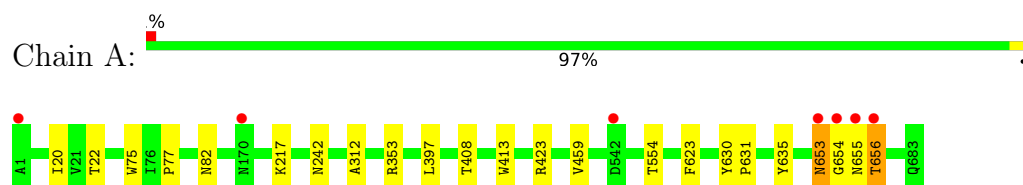
- Molecule 10 is water.

Mol	Chain	Residues	Atoms		ZeroOcc	AltConf
10	A	1155	Total	O	0	0
			1155	1155		

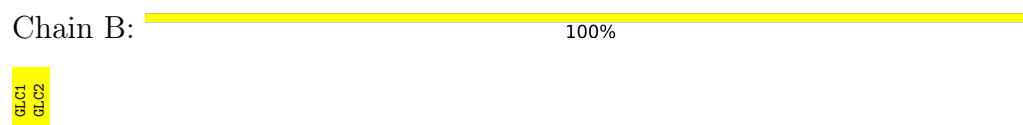
3 Residue-property plots [i](#)

These plots are drawn for all protein, RNA, DNA and oligosaccharide chains in the entry. The first graphic for a chain summarises the proportions of the various outlier classes displayed in the second graphic. The second graphic shows the sequence view annotated by issues in geometry and electron density. Residues are color-coded according to the number of geometric quality criteria for which they contain at least one outlier: green = 0, yellow = 1, orange = 2 and red = 3 or more. A red dot above a residue indicates a poor fit to the electron density ($RSRZ > 2$). Stretches of 2 or more consecutive residues without any outlier are shown as a green connector. Residues present in the sample, but not in the model, are shown in grey.

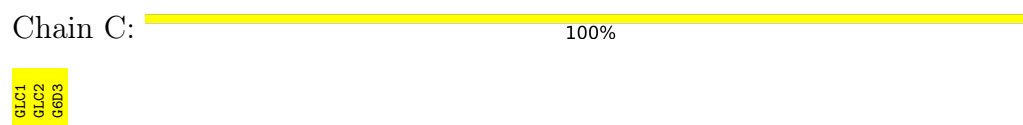
- Molecule 1: Cyclomaltodextrin glucanotransferase



- Molecule 2: alpha-D-glucopyranose-(1-4)-alpha-D-glucopyranose



- Molecule 3: alpha-D-quinovopyranose-(1-4)-alpha-D-glucopyranose-(1-4)-alpha-D-glucopyranose



- Molecule 4: alpha-D-glucopyranose-(1-4)-alpha-D-glucopyranose-(1-4)-alpha-D-glucopyranose



4 Data and refinement statistics

Property	Value	Source
Space group	P 21 21 21	Depositor
Cell constants a, b, c, α , β , γ	73.79Å 96.58Å 115.24Å 90.00° 90.00° 90.00°	Depositor
Resolution (Å)	49.48 – 1.60 49.48 – 1.60	Depositor EDS
% Data completeness (in resolution range)	94.1 (49.48-1.60) 94.1 (49.48-1.60)	Depositor EDS
R_{merge}	0.10	Depositor
R_{sym}	0.12	Depositor
$\langle I/\sigma(I) \rangle$ ¹	3.01 (at 1.60Å)	Xtriage
Refinement program	REFMAC 5.3.0022	Depositor
R, R_{free}	0.144 , 0.165 0.150 , 0.170	Depositor DCC
R_{free} test set	5138 reflections (5.01%)	wwPDB-VP
Wilson B-factor (Å ²)	9.5	Xtriage
Anisotropy	0.014	Xtriage
Bulk solvent k_{sol} (e/Å ³), B_{sol} (Å ²)	0.36 , 52.3	EDS
L-test for twinning ²	$\langle L \rangle = 0.49$, $\langle L^2 \rangle = 0.32$	Xtriage
Estimated twinning fraction	No twinning to report.	Xtriage
F_o, F_c correlation	0.96	EDS
Total number of atoms	6689	wwPDB-VP
Average B, all atoms (Å ²)	12.0	wwPDB-VP

Xtriage's analysis on translational NCS is as follows: *The largest off-origin peak in the Patterson function is 5.41% of the height of the origin peak. No significant pseudotranslation is detected.*

¹Intensities estimated from amplitudes.

²Theoretical values of $\langle |L| \rangle$, $\langle L^2 \rangle$ for acentric reflections are 0.5, 0.333 respectively for untwinned datasets, and 0.375, 0.2 for perfectly twinned datasets.

5 Model quality

5.1 Standard geometry

Bond lengths and bond angles in the following residue types are not validated in this section: SO4, G6D, GOL, CA, GLC, CL, ACI

The Z score for a bond length (or angle) is the number of standard deviations the observed value is removed from the expected value. A bond length (or angle) with $|Z| > 5$ is considered an outlier worth inspection. RMSZ is the root-mean-square of all Z scores of the bond lengths (or angles).

Mol	Chain	Bond lengths		Bond angles	
		RMSZ	$\# Z > 5$	RMSZ	$\# Z > 5$
1	A	0.40	0/5548	0.53	0/7575

There are no bond length outliers.

There are no bond angle outliers.

There are no chirality outliers.

There are no planarity outliers.

5.2 Too-close contacts

In the following table, the Non-H and H(model) columns list the number of non-hydrogen atoms and hydrogen atoms in the chain respectively. The H(added) column lists the number of hydrogen atoms added and optimized by MolProbity. The Clashes column lists the number of clashes within the asymmetric unit, whereas Symm-Clashes lists symmetry-related clashes.

Mol	Chain	Non-H	H(model)	H(added)	Clashes	Symm-Clashes
1	A	5380	0	5119	14	0
2	B	23	0	21	0	0
3	C	32	0	21	0	0
4	D	34	0	29	1	0
5	A	11	0	9	0	0
6	A	2	0	0	0	0
7	A	1	0	0	0	0
8	A	15	0	0	0	0
9	A	36	0	48	1	0
10	A	1155	0	0	3	0
All	All	6689	0	5247	15	0

The all-atom clashscore is defined as the number of clashes found per 1000 atoms (including hydrogen atoms). The all-atom clashscore for this structure is 1.

All (15) close contacts within the same asymmetric unit are listed below, sorted by their clash magnitude.

Atom-1	Atom-2	Interatomic distance (Å)	Clash overlap (Å)
1:A:653:ASN:HD22	1:A:654:GLY:H	1.35	0.74
1:A:653:ASN:HD22	1:A:655:ASN:H	1.43	0.64
1:A:554[B]:THR:HG21	10:A:1414:HOH:O	2.03	0.58
1:A:217:LYS:HE3	10:A:1435:HOH:O	2.05	0.56
4:D:2:GLC:H61	4:D:3:GLC:H5	1.94	0.50
1:A:20:ILE:O	1:A:77:PRO:HD3	2.13	0.49
1:A:623:PHE:CE2	9:A:706:GOL:H11	2.47	0.49
1:A:653:ASN:ND2	1:A:655:ASN:H	2.10	0.47
1:A:655:ASN:O	1:A:656:THR:CB	2.66	0.44
1:A:653:ASN:HD22	1:A:654:GLY:N	2.11	0.43
1:A:397:LEU:HD11	1:A:459:VAL:HG11	2.01	0.43
1:A:312:ALA:HB2	10:A:1824:HOH:O	2.17	0.43
1:A:408:THR:O	1:A:423:ARG:HA	2.19	0.43
1:A:630:TYR:CD2	1:A:631:PRO:HA	2.55	0.41
1:A:22:THR:OG1	1:A:77:PRO:HD2	2.21	0.41

There are no symmetry-related clashes.

5.3 Torsion angles

5.3.1 Protein backbone

In the following table, the Percentiles column shows the percent Ramachandran outliers of the chain as a percentile score with respect to all X-ray entries followed by that with respect to entries of similar resolution.

The Analysed column shows the number of residues for which the backbone conformation was analysed, and the total number of residues.

Mol	Chain	Analysed	Favoured	Allowed	Outliers	Percentiles
1	A	693/683 (102%)	672 (97%)	20 (3%)	1 (0%)	51 29

All (1) Ramachandran outliers are listed below:

Mol	Chain	Res	Type
1	A	656	THR

5.3.2 Protein sidechains [i](#)

In the following table, the Percentiles column shows the percent sidechain outliers of the chain as a percentile score with respect to all X-ray entries followed by that with respect to entries of similar resolution.

The Analysed column shows the number of residues for which the sidechain conformation was analysed, and the total number of residues.

Mol	Chain	Analysed	Rotameric	Outliers	Percentiles	
1	A	595/583 (102%)	588 (99%)	7 (1%)	71	54

All (7) residues with a non-rotameric sidechain are listed below:

Mol	Chain	Res	Type
1	A	75	TRP
1	A	82	ASN
1	A	242	ASN
1	A	353	ARG
1	A	413	TRP
1	A	635	TYR
1	A	653	ASN

Sometimes sidechains can be flipped to improve hydrogen bonding and reduce clashes. All (1) such sidechains are listed below:

Mol	Chain	Res	Type
1	A	653	ASN

5.3.3 RNA [i](#)

There are no RNA molecules in this entry.

5.4 Non-standard residues in protein, DNA, RNA chains [i](#)

There are no non-standard protein/DNA/RNA residues in this entry.

5.5 Carbohydrates [i](#)

8 monosaccharides are modelled in this entry.

In the following table, the Counts columns list the number of bonds (or angles) for which Mogul statistics could be retrieved, the number of bonds (or angles) that are observed in the model and

the number of bonds (or angles) that are defined in the Chemical Component Dictionary. The Link column lists molecule types, if any, to which the group is linked. The Z score for a bond length (or angle) is the number of standard deviations the observed value is removed from the expected value. A bond length (or angle) with $|Z| > 2$ is considered an outlier worth inspection. RMSZ is the root-mean-square of all Z scores of the bond lengths (or angles).

Mol	Type	Chain	Res	Link	Bond lengths			Bond angles		
					Counts	RMSZ	# Z > 2	Counts	RMSZ	# Z > 2
2	GLC	B	1	2	12,12,12	1.14	1 (8%)	17,17,17	0.68	0
2	GLC	B	2	2	11,11,12	0.52	0	15,15,17	0.82	1 (6%)
3	GLC	C	1	3	12,12,12	1.27	1 (8%)	17,17,17	2.31	2 (11%)
3	GLC	C	2	3	11,11,12	1.20	1 (9%)	15,15,17	1.35	2 (13%)
3	G6D	C	3	5,3	9,9,11	0.77	0	10,12,16	1.24	2 (20%)
4	GLC	D	1	5,4	12,12,12	1.08	1 (8%)	17,17,17	0.93	1 (5%)
4	GLC	D	2	4	11,11,12	1.23	1 (9%)	15,15,17	1.50	2 (13%)
4	GLC	D	3	4	11,11,12	0.50	0	15,15,17	1.16	1 (6%)

In the following table, the Chirals column lists the number of chiral outliers, the number of chiral centers analysed, the number of these observed in the model and the number defined in the Chemical Component Dictionary. Similar counts are reported in the Torsion and Rings columns. '-' means no outliers of that kind were identified.

Mol	Type	Chain	Res	Link	Chirals	Torsions	Rings
2	GLC	B	1	2	-	0/2/22/22	0/1/1/1
2	GLC	B	2	2	-	0/2/19/22	0/1/1/1
3	GLC	C	1	3	-	2/2/22/22	0/1/1/1
3	GLC	C	2	3	-	0/2/19/22	0/1/1/1
3	G6D	C	3	5,3	-	-	0/1/1/1
4	GLC	D	1	5,4	-	0/2/22/22	0/1/1/1
4	GLC	D	2	4	-	0/2/19/22	0/1/1/1
4	GLC	D	3	4	-	2/2/19/22	0/1/1/1

All (5) bond length outliers are listed below:

Mol	Chain	Res	Type	Atoms	Z	Observed(Å)	Ideal(Å)
3	C	1	GLC	O4-C4	-4.01	1.33	1.43
4	D	2	GLC	O4-C4	-3.78	1.34	1.43
3	C	2	GLC	O4-C4	-3.61	1.34	1.43
2	B	1	GLC	O4-C4	-3.60	1.34	1.43
4	D	1	GLC	O4-C4	-3.24	1.35	1.43

All (11) bond angle outliers are listed below:

Mol	Chain	Res	Type	Atoms	Z	Observed(°)	Ideal(°)
3	C	1	GLC	O4-C4-C5	8.61	130.68	109.30
4	D	2	GLC	O4-C4-C3	4.67	121.15	110.35
4	D	3	GLC	C1-O5-C5	3.93	117.52	112.19
3	C	2	GLC	O4-C4-C5	3.25	117.36	109.30
3	C	2	GLC	C1-O5-C5	3.19	116.51	112.19
4	D	1	GLC	O4-C4-C5	2.83	116.31	109.30
3	C	3	G6D	C4-C3-C2	2.43	113.28	110.27
2	B	2	GLC	C1-O5-C5	2.39	115.43	112.19
4	D	2	GLC	C1-O5-C5	2.29	115.30	112.19
3	C	3	G6D	O3-C3-C2	-2.09	105.58	110.22
3	C	1	GLC	C1-C2-C3	2.03	114.52	110.31

There are no chirality outliers.

All (4) torsion outliers are listed below:

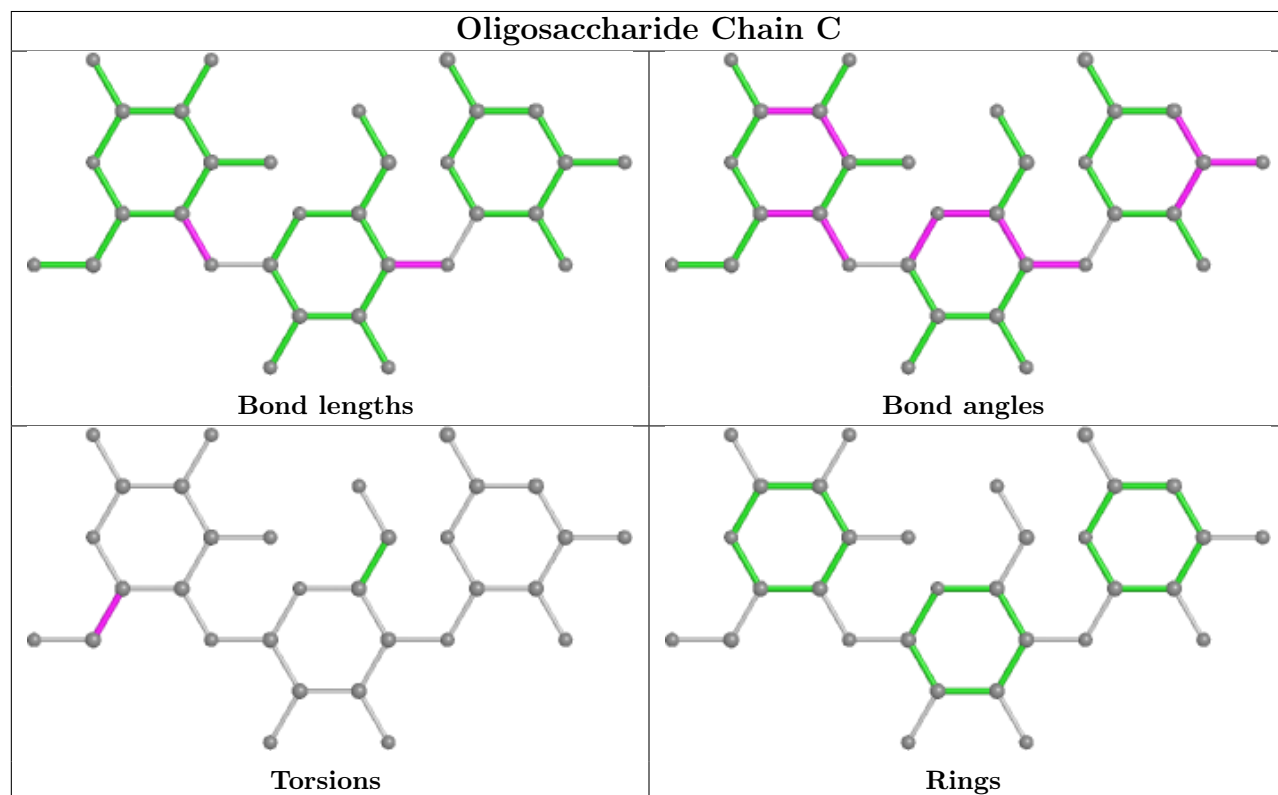
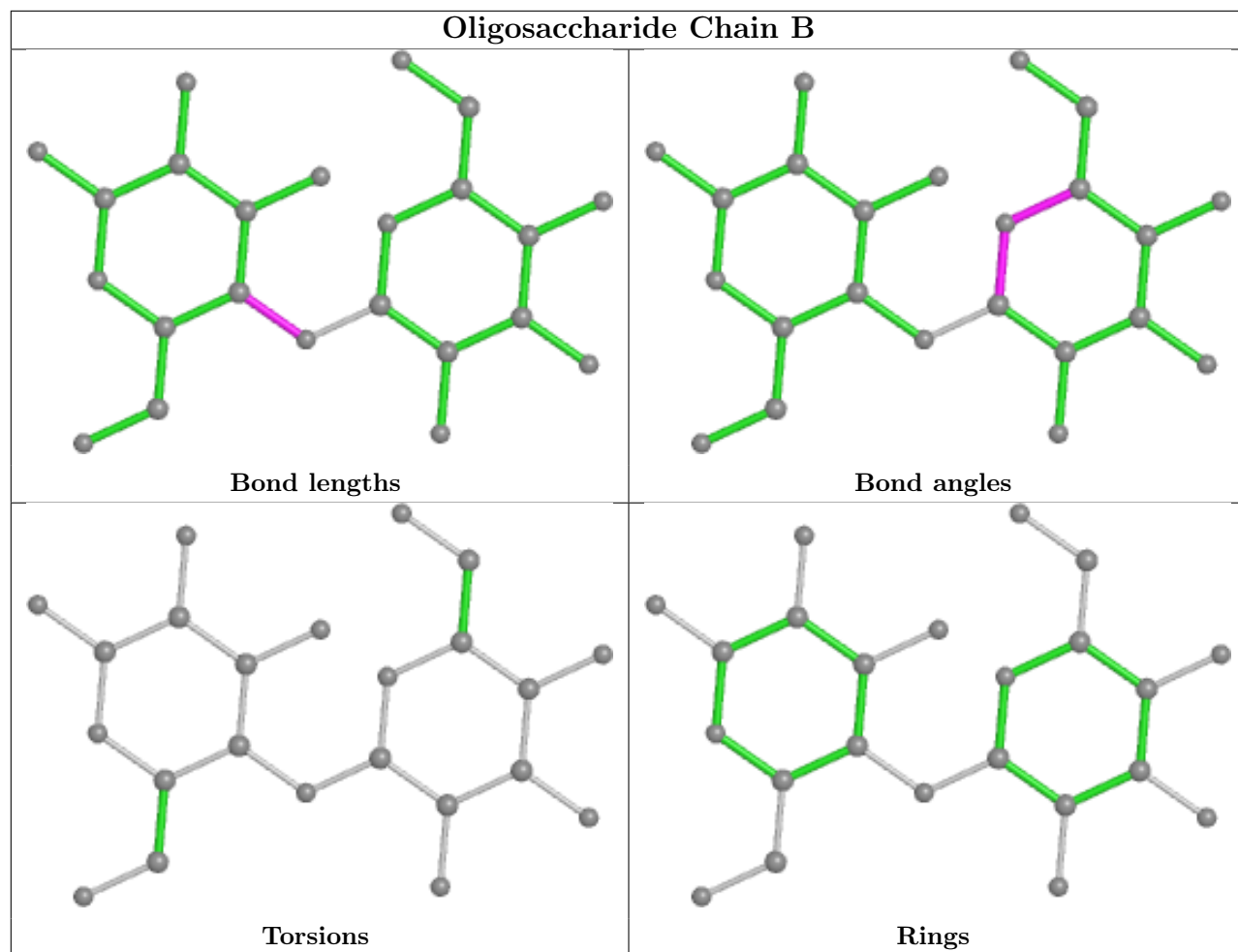
Mol	Chain	Res	Type	Atoms
3	C	1	GLC	O5-C5-C6-O6
3	C	1	GLC	C4-C5-C6-O6
4	D	3	GLC	C4-C5-C6-O6
4	D	3	GLC	O5-C5-C6-O6

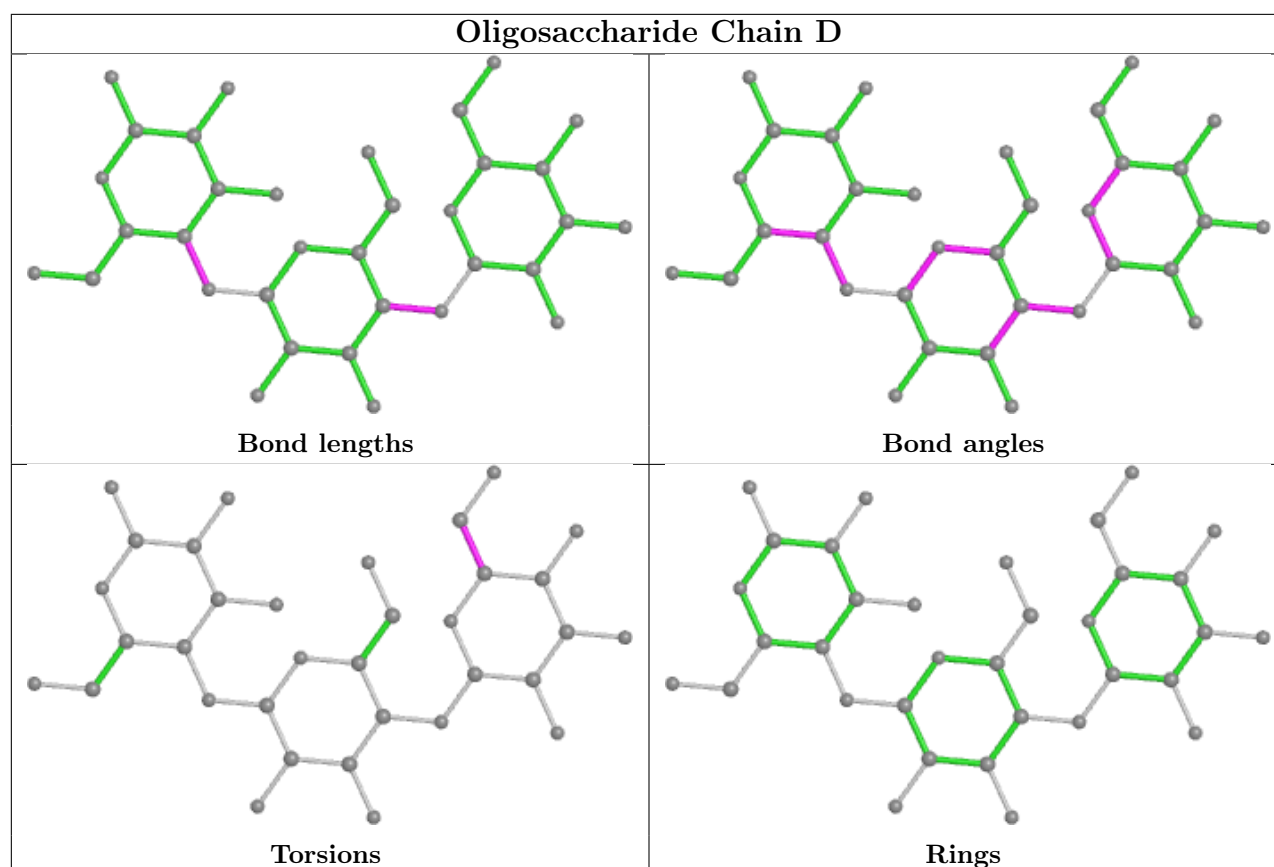
There are no ring outliers.

2 monomers are involved in 1 short contact:

Mol	Chain	Res	Type	Clashes	Symm-Clashes
4	D	3	GLC	1	0
4	D	2	GLC	1	0

The following is a two-dimensional graphical depiction of Mogul quality analysis of bond lengths, bond angles, torsion angles, and ring geometry for oligosaccharide.





5.6 Ligand geometry [i](#)

Of 13 ligands modelled in this entry, 3 are monoatomic - leaving 10 for Mogul analysis.

In the following table, the Counts columns list the number of bonds (or angles) for which Mogul statistics could be retrieved, the number of bonds (or angles) that are observed in the model and the number of bonds (or angles) that are defined in the Chemical Component Dictionary. The Link column lists molecule types, if any, to which the group is linked. The Z score for a bond length (or angle) is the number of standard deviations the observed value is removed from the expected value. A bond length (or angle) with $|Z| > 2$ is considered an outlier worth inspection. RMSZ is the root-mean-square of all Z scores of the bond lengths (or angles).

Mol	Type	Chain	Res	Link	Bond lengths			Bond angles		
					Counts	RMSZ	$\# Z > 2$	Counts	RMSZ	$\# Z > 2$
9	GOL	A	708	-	5,5,5	0.38	0	5,5,5	0.15	0
8	SO4	A	702	-	4,4,4	0.11	0	6,6,6	0.27	0
9	GOL	A	709	-	5,5,5	0.36	0	5,5,5	0.36	0
8	SO4	A	701	-	4,4,4	0.14	0	6,6,6	0.07	0
8	SO4	A	703	-	4,4,4	0.14	0	6,6,6	0.08	0
9	GOL	A	706	-	5,5,5	0.33	0	5,5,5	0.37	0
9	GOL	A	707	-	5,5,5	0.35	0	5,5,5	0.38	0
9	GOL	A	704	-	5,5,5	0.34	0	5,5,5	0.38	0
9	GOL	A	705	-	5,5,5	0.36	0	5,5,5	0.31	0

Mol	Type	Chain	Res	Link	Bond lengths			Bond angles		
					Counts	RMSZ	# Z > 2	Counts	RMSZ	# Z > 2
5	ACI	A	694	4,3	11,11,12	0.60	0	10,15,17	1.17	0

In the following table, the Chirals column lists the number of chiral outliers, the number of chiral centers analysed, the number of these observed in the model and the number defined in the Chemical Component Dictionary. Similar counts are reported in the Torsion and Rings columns. '-' means no outliers of that kind were identified.

Mol	Type	Chain	Res	Link	Chirals	Torsions	Rings
9	GOL	A	708	-	-	0/4/4/4	-
9	GOL	A	709	-	-	0/4/4/4	-
9	GOL	A	706	-	-	0/4/4/4	-
9	GOL	A	707	-	-	1/4/4/4	-
9	GOL	A	704	-	-	0/4/4/4	-
9	GOL	A	705	-	-	0/4/4/4	-
5	ACI	A	694	4,3	-	0/2/18/22	0/1/1/1

There are no bond length outliers.

There are no bond angle outliers.

There are no chirality outliers.

All (1) torsion outliers are listed below:

Mol	Chain	Res	Type	Atoms
9	A	707	GOL	O1-C1-C2-C3

There are no ring outliers.

1 monomer is involved in 1 short contact:

Mol	Chain	Res	Type	Clashes	Symm-Clashes
9	A	706	GOL	1	0

5.7 Other polymers [i](#)

There are no such residues in this entry.

5.8 Polymer linkage issues [i](#)

There are no chain breaks in this entry.

6 Fit of model and data [i](#)

6.1 Protein, DNA and RNA chains [i](#)

In the following table, the column labelled ‘#RSRZ> 2’ contains the number (and percentage) of RSRZ outliers, followed by percent RSRZ outliers for the chain as percentile scores relative to all X-ray entries and entries of similar resolution. The OWAB column contains the minimum, median, 95th percentile and maximum values of the occupancy-weighted average B-factor per residue. The column labelled ‘Q< 0.9’ lists the number of (and percentage) of residues with an average occupancy less than 0.9.

Mol	Chain	Analysed	<RSRZ>	#RSRZ>2	OWAB(Å ²)	Q<0.9
1	A	683/683 (100%)	-0.28	7 (1%) 82 82	5, 7, 12, 20	0

All (7) RSRZ outliers are listed below:

Mol	Chain	Res	Type	RSRZ
1	A	654	GLY	11.4
1	A	655	ASN	9.1
1	A	656	THR	4.6
1	A	653	ASN	4.4
1	A	170	ASN	2.3
1	A	1	ALA	2.2
1	A	542	ASP	2.1

6.2 Non-standard residues in protein, DNA, RNA chains [i](#)

There are no non-standard protein/DNA/RNA residues in this entry.

6.3 Carbohydrates [i](#)

In the following table, the Atoms column lists the number of modelled atoms in the group and the number defined in the chemical component dictionary. The B-factors column lists the minimum, median, 95th percentile and maximum values of B factors of atoms in the group. The column labelled ‘Q< 0.9’ lists the number of atoms with occupancy less than 0.9.

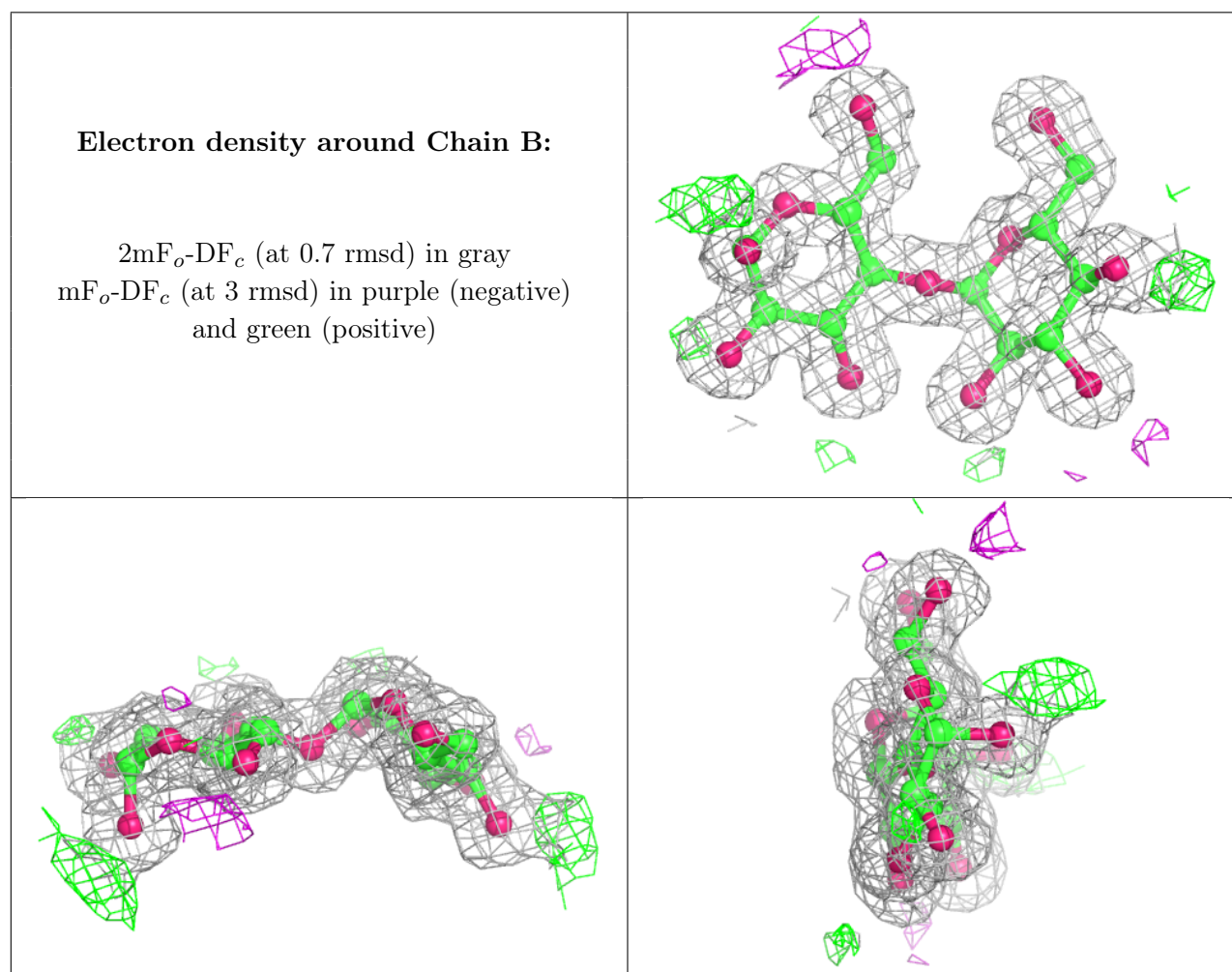
Mol	Type	Chain	Res	Atoms	RSCC	RSR	B-factors(Å ²)	Q<0.9
4	GLC	D	3	11/12	0.78	0.20	35,37,39,40	0
3	GLC	C	1	12/12	0.79	0.27	23,38,39,40	0
2	GLC	B	1	12/12	0.95	0.08	14,16,18,19	0
4	GLC	D	2	11/12	0.95	0.07	15,17,21,30	0
2	GLC	B	2	11/12	0.95	0.08	15,17,18,19	0

Continued on next page...

Continued from previous page...

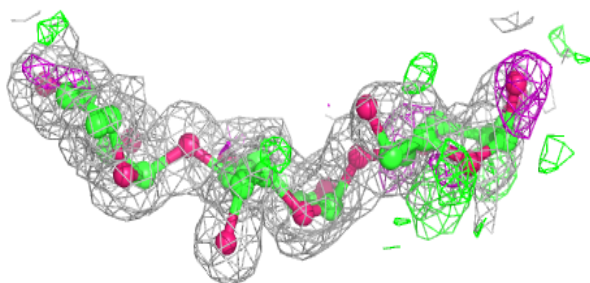
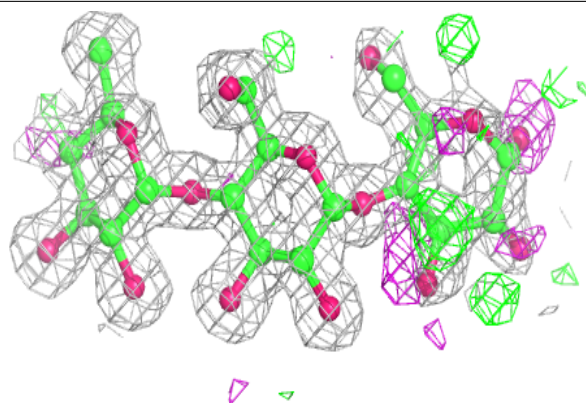
Mol	Type	Chain	Res	Atoms	RSCC	RSR	B-factors(\AA^2)	Q<0.9
3	GLC	C	2	11/12	0.96	0.07	13,17,20,21	0
3	G6D	C	3	9/11	0.96	0.08	11,12,12,12	0
4	GLC	D	1	12/12	0.98	0.07	9,11,12,13	0

The following is a graphical depiction of the model fit to experimental electron density for oligosaccharide. Each fit is shown from different orientation to approximate a three-dimensional view.

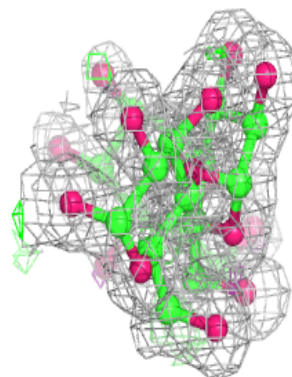
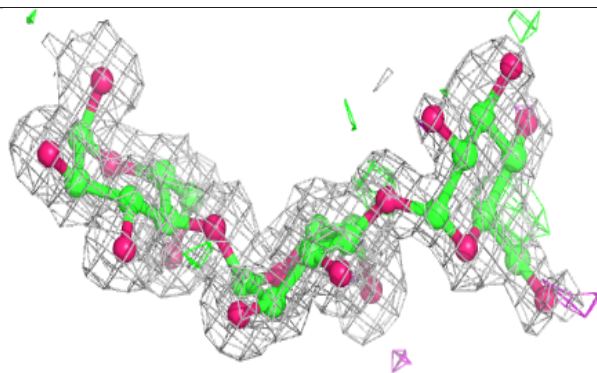
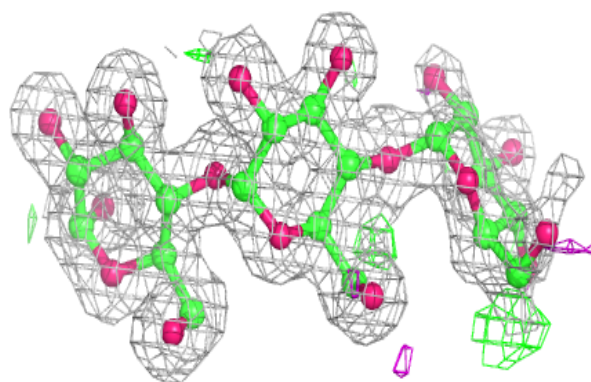


Electron density around Chain C:

$2mF_o-DF_c$ (at 0.7 rmsd) in gray
 mF_o-DF_c (at 3 rmsd) in purple (negative)
and green (positive)

**Electron density around Chain D:**

$2mF_o-DF_c$ (at 0.7 rmsd) in gray
 mF_o-DF_c (at 3 rmsd) in purple (negative)
and green (positive)



6.4 Ligands [i](#)

In the following table, the Atoms column lists the number of modelled atoms in the group and the number defined in the chemical component dictionary. The B-factors column lists the minimum, median, 95th percentile and maximum values of B factors of atoms in the group. The column labelled 'Q< 0.9' lists the number of atoms with occupancy less than 0.9.

Mol	Type	Chain	Res	Atoms	RSCC	RSR	B-factors(Å ²)	Q<0.9
8	SO4	A	702	5/5	0.58	0.33	32,32,35,35	0
9	GOL	A	704	6/6	0.87	0.12	20,24,26,28	0
8	SO4	A	703	5/5	0.89	0.27	41,41,42,42	0
9	GOL	A	707	6/6	0.89	0.10	20,22,23,24	0
9	GOL	A	708	6/6	0.89	0.14	22,24,24,25	0
9	GOL	A	709	6/6	0.89	0.15	25,27,27,28	0
8	SO4	A	701	5/5	0.92	0.25	47,47,48,48	0
5	ACI	A	694	11/12	0.95	0.09	9,10,11,11	0
9	GOL	A	706	6/6	0.96	0.09	12,13,14,14	0
9	GOL	A	705	6/6	0.98	0.06	18,19,19,20	0
7	CL	A	700	1/1	0.99	0.04	18,18,18,18	0
6	CA	A	698	1/1	1.00	0.06	10,10,10,10	0
6	CA	A	699	1/1	1.00	0.04	11,11,11,11	0

6.5 Other polymers [i](#)

There are no such residues in this entry.