



Full wwPDB X-ray Structure Validation Report ⓘ

Aug 21, 2020 – 01:09 AM BST

PDB ID : 6BMW
Title : Non-receptor Protein Tyrosine Phosphatase SHP2 in Complex with Allosteric Inhibitors SHP099 and SHP504
Authors : Stams, T.; Fodor, M.
Deposited on : 2017-11-15
Resolution : 2.10 Å(reported)

This is a Full wwPDB X-ray Structure Validation Report for a publicly released PDB entry.

We welcome your comments at validation@mail.wwpdb.org

A user guide is available at

<https://www.wwpdb.org/validation/2017/XrayValidationReportHelp>

with specific help available everywhere you see the ⓘ symbol.

The following versions of software and data (see [references ⓘ](#)) were used in the production of this report:

MolProbity : 4.02b-467
Mogul : 1.8.5 (274361), CSD as541be (2020)
Xtriage (Phenix) : 1.13
EDS : 2.13.1
buster-report : 1.1.7 (2018)
Percentile statistics : 20191225.v01 (using entries in the PDB archive December 25th 2019)
Refmac : 5.8.0158
CCP4 : 7.0.044 (Gargrove)
Ideal geometry (proteins) : Engh & Huber (2001)
Ideal geometry (DNA, RNA) : Parkinson et al. (1996)
Validation Pipeline (wwPDB-VP) : 2.13.1

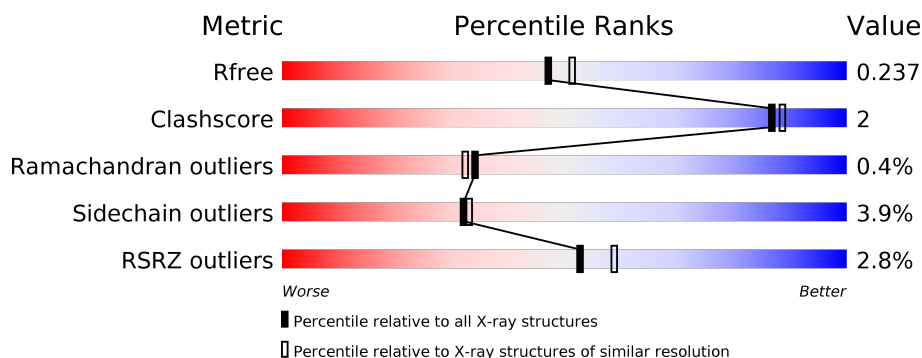
1 Overall quality at a glance

The following experimental techniques were used to determine the structure:

X-RAY DIFFRACTION

The reported resolution of this entry is 2.10 Å.

Percentile scores (ranging between 0-100) for global validation metrics of the entry are shown in the following graphic. The table shows the number of entries on which the scores are based.



Metric	Whole archive (#Entries)	Similar resolution (#Entries, resolution range(Å))
R_{free}	130704	5197 (2.10-2.10)
Clashscore	141614	5710 (2.10-2.10)
Ramachandran outliers	138981	5647 (2.10-2.10)
Sidechain outliers	138945	5648 (2.10-2.10)
RSRZ outliers	127900	5083 (2.10-2.10)

The table below summarises the geometric issues observed across the polymeric chains and their fit to the electron density. The red, orange, yellow and green segments on the lower bar indicate the fraction of residues that contain outliers for ≥ 3 , 2, 1 and 0 types of geometric quality criteria respectively. A grey segment represents the fraction of residues that are not modelled. The numeric value for each fraction is indicated below the corresponding segment, with a dot representing fractions $\leq 5\%$. The upper red bar (where present) indicates the fraction of residues that have poor fit to the electron density. The numeric value is given above the bar.

Mol	Chain	Length	Quality of chain
1	A	526	<div> <div>2%</div> <div> <div></div> <div>81%</div> <div>9%</div> <div>10%</div> </div> </div>
1	B	526	<div> <div>3%</div> <div> <div></div> <div>83%</div> <div>7%</div> <div>10%</div> </div> </div>

2 Entry composition [i](#)

There are 6 unique types of molecules in this entry. The entry contains 8284 atoms, of which 0 are hydrogens and 0 are deuteriums.

In the tables below, the ZeroOcc column contains the number of atoms modelled with zero occupancy, the AltConf column contains the number of residues with at least one atom in alternate conformation and the Trace column contains the number of residues modelled with at most 2 atoms.

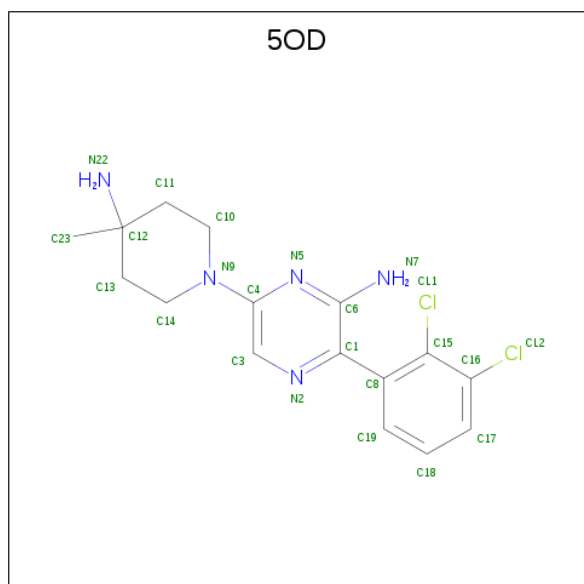
- Molecule 1 is a protein called Tyrosine-protein phosphatase non-receptor type 11.

Mol	Chain	Residues	Atoms					ZeroOcc	AltConf	Trace
1	A	475	Total	C	N	O	S	0	1	0
			3862	2441	687	716	18			
1	B	473	Total	C	N	O	S	0	0	0
			3844	2430	684	712	18			

There are 2 discrepancies between the modelled and reference sequences:

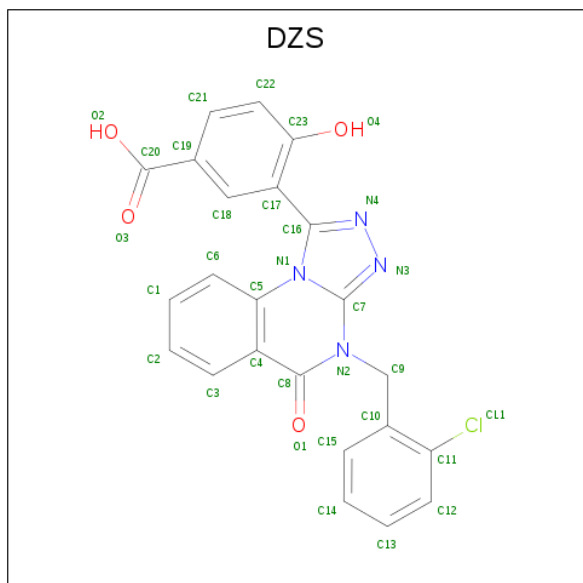
Chain	Residue	Modelled	Actual	Comment	Reference
A	0	SER	-	expression tag	UNP Q06124
B	0	SER	-	expression tag	UNP Q06124

- Molecule 2 is 6-(4-azanyl-4-methyl-piperidin-1-yl)-3-[2,3-bis(chloranyl)phenyl]pyrazin-2-amine (three-letter code: 5OD) (formula: C₁₆H₁₉Cl₂N₅) (labeled as "Ligand of Interest" by author).



Mol	Chain	Residues	Atoms				ZeroOcc	AltConf
2	A	1	Total	C	Cl	N	0	0
			23	16	2	5		
2	B	1	Total	C	Cl	N	0	0
			23	16	2	5		

- Molecule 3 is 3-{4-[(2-chlorophenyl)methyl]-5-oxo-4,5-dihydro[1,2,4]triazolo[4,3-a]quinazolin-1-yl}-4-hydroxybenzoic acid (three-letter code: DZS) (formula: C₂₃H₁₅ClN₄O₄) (labeled as "Ligand of Interest" by author).



Mol	Chain	Residues	Atoms				ZeroOcc	AltConf
3	A	1	Total	C	Cl	N	O	0
			32	23	1	4	4	0
3	B	1	Total	C	Cl	N	O	0
			32	23	1	4	4	0

- Molecule 4 is PHOSPHATE ION (three-letter code: PO4) (formula: O₄P).



Mol	Chain	Residues	Atoms			ZeroOcc	AltConf
4	A	1	Total	O	P	0	0
			5	4	1		
4	A	1	Total	O	P	0	0
			5	4	1		
4	B	1	Total	O	P	0	0
			5	4	1		
4	B	1	Total	O	P	0	0
			5	4	1		

- Molecule 5 is GLYCEROL (three-letter code: GOL) (formula: C₃H₈O₃).



Mol	Chain	Residues	Atoms			ZeroOcc	AltConf
5	B	1	Total	C	O	0	0
			6	3	3		

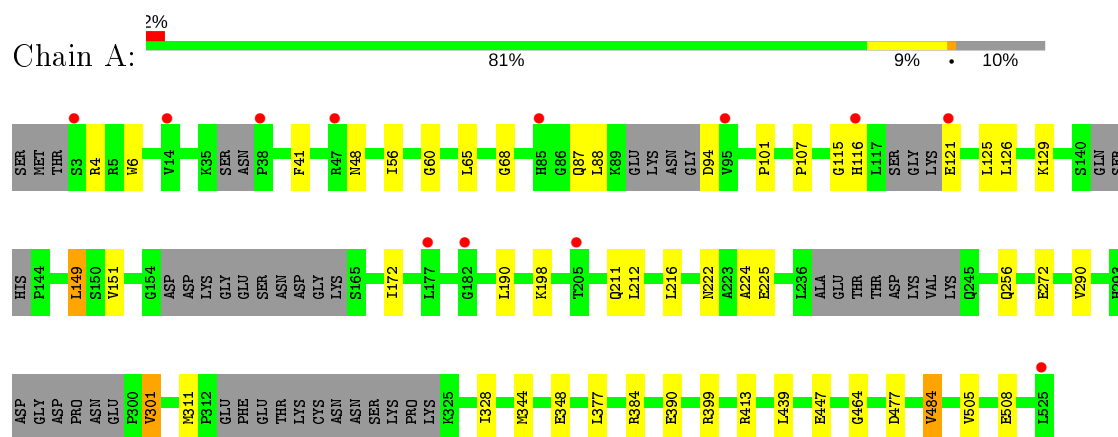
- Molecule 6 is water.

Mol	Chain	Residues	Atoms		ZeroOcc	AltConf
6	A	229	Total	O	0	2
			231	231		
6	B	210	Total	O	0	1
			211	211		

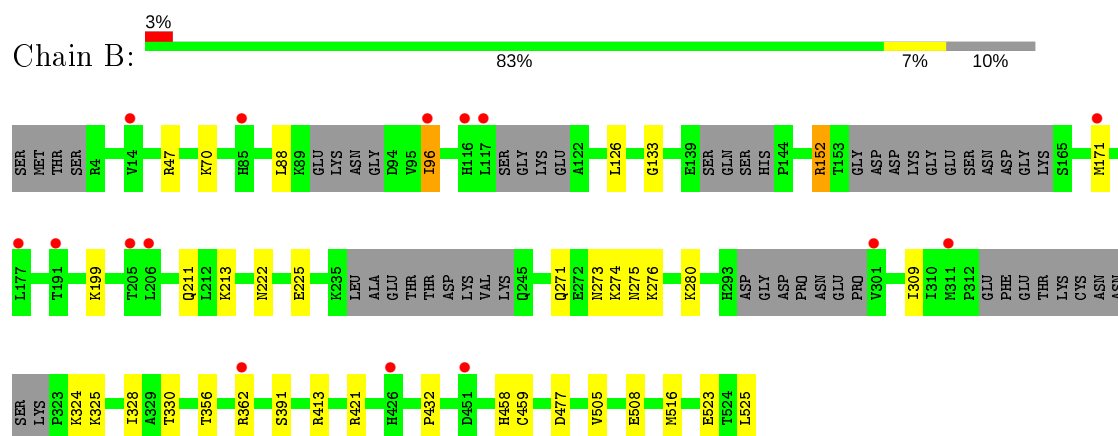
3 Residue-property plots [i](#)

These plots are drawn for all protein, RNA, DNA and oligosaccharide chains in the entry. The first graphic for a chain summarises the proportions of the various outlier classes displayed in the second graphic. The second graphic shows the sequence view annotated by issues in geometry and electron density. Residues are color-coded according to the number of geometric quality criteria for which they contain at least one outlier: green = 0, yellow = 1, orange = 2 and red = 3 or more. A red dot above a residue indicates a poor fit to the electron density ($RSRZ > 2$). Stretches of 2 or more consecutive residues without any outlier are shown as a green connector. Residues present in the sample, but not in the model, are shown in grey.

- Molecule 1: Tyrosine-protein phosphatase non-receptor type 11



- Molecule 1: Tyrosine-protein phosphatase non-receptor type 11



4 Data and refinement statistics

Property	Value	Source
Space group	P 1 21 1	Depositor
Cell constants a, b, c, α , β , γ	46.27Å 214.13Å 56.03Å 90.00° 96.68° 90.00°	Depositor
Resolution (Å)	107.06 – 2.10 55.65 – 2.10	Depositor EDS
% Data completeness (in resolution range)	98.9 (107.06-2.10) 98.9 (55.65-2.10)	Depositor EDS
R_{merge}	0.10	Depositor
R_{sym}	(Not available)	Depositor
$\langle I/\sigma(I) \rangle$ ¹	2.06 (at 2.10Å)	Xtriage
Refinement program	BUSTER 2.11.7	Depositor
R, R_{free}	0.186 , 0.229 0.194 , 0.237	Depositor DCC
R_{free} test set	3095 reflections (4.98%)	wwPDB-VP
Wilson B-factor (Å ²)	34.8	Xtriage
Anisotropy	0.360	Xtriage
Bulk solvent k_{sol} (e/Å ³), B_{sol} (Å ²)	0.35 , 56.6	EDS
L-test for twinning ²	$\langle L \rangle = 0.49$, $\langle L^2 \rangle = 0.32$	Xtriage
Estimated twinning fraction	No twinning to report.	Xtriage
F_o, F_c correlation	0.95	EDS
Total number of atoms	8284	wwPDB-VP
Average B, all atoms (Å ²)	42.0	wwPDB-VP

Xtriage's analysis on translational NCS is as follows: *The largest off-origin peak in the Patterson function is 4.89% of the height of the origin peak. No significant pseudotranslation is detected.*

¹Intensities estimated from amplitudes.

²Theoretical values of $\langle |L| \rangle$, $\langle L^2 \rangle$ for acentric reflections are 0.5, 0.333 respectively for untwinned datasets, and 0.375, 0.2 for perfectly twinned datasets.

5 Model quality

5.1 Standard geometry

Bond lengths and bond angles in the following residue types are not validated in this section: GOL, PO4, DZS, 5OD

The Z score for a bond length (or angle) is the number of standard deviations the observed value is removed from the expected value. A bond length (or angle) with $|Z| > 5$ is considered an outlier worth inspection. RMSZ is the root-mean-square of all Z scores of the bond lengths (or angles).

Mol	Chain	Bond lengths		Bond angles	
		RMSZ	# Z >5	RMSZ	# Z >5
1	A	0.52	0/3942	0.66	0/5309
1	B	0.51	0/3922	0.65	0/5285
All	All	0.51	0/7864	0.65	0/10594

There are no bond length outliers.

There are no bond angle outliers.

There are no chirality outliers.

There are no planarity outliers.

5.2 Too-close contacts

In the following table, the Non-H and H(model) columns list the number of non-hydrogen atoms and hydrogen atoms in the chain respectively. The H(added) column lists the number of hydrogen atoms added and optimized by MolProbity. The Clashes column lists the number of clashes within the asymmetric unit, whereas Symm-Clashes lists symmetry related clashes.

Mol	Chain	Non-H	H(model)	H(added)	Clashes	Symm-Clashes
1	A	3862	0	3821	20	0
1	B	3844	0	3802	12	0
2	A	23	0	0	0	0
2	B	23	0	0	0	0
3	A	32	0	0	0	0
3	B	32	0	0	0	0
4	A	10	0	0	0	0
4	B	10	0	0	0	0
5	B	6	0	8	1	0
6	A	231	0	0	1	0
6	B	211	0	0	0	0
All	All	8284	0	7631	32	0

The all-atom clashscore is defined as the number of clashes found per 1000 atoms (including hydrogen atoms). The all-atom clashscore for this structure is 2.

All (32) close contacts within the same asymmetric unit are listed below, sorted by their clash magnitude.

Atom-1	Atom-2	Interatomic distance (Å)	Clash overlap (Å)
1:B:391:SER:HB3	5:B:605:GOL:H11	1.68	0.75
1:A:272:GLU:CB	1:A:301:VAL:HG11	2.27	0.64
1:A:272:GLU:HB3	1:A:301:VAL:HG11	1.80	0.64
1:A:290:VAL:HG11	1:A:344:MET:HG3	1.81	0.63
1:A:65:LEU:HD23	1:A:68:GLY:HA3	1.86	0.57
1:A:222:ASN:O	1:A:225:GLU:HG2	2.07	0.55
1:B:309:ILE:HD13	1:B:328:ILE:HG12	1.90	0.54
1:B:88:LEU:HG	1:B:96:ILE:HG23	1.89	0.53
1:B:271:GLN:HA	1:B:274:LYS:HE3	1.91	0.52
1:A:6:TRP:HB3	1:A:101:PRO:HB3	1.92	0.52
1:A:256:GLN:HG3	6:A:823:HOH:O	2.10	0.52
1:B:432:PRO:HG3	1:B:516:MET:HG2	1.93	0.50
1:A:65:LEU:HD21	1:A:88:LEU:HD13	1.93	0.50
1:B:222:ASN:O	1:B:225:GLU:HG2	2.11	0.50
1:B:273:ASN:HA	1:B:276:LYS:HD2	1.93	0.49
1:B:133:GLY:HA3	1:B:213:LYS:HB2	1.94	0.48
1:B:126:LEU:HD22	1:B:152:ARG:HB2	1.96	0.48
1:A:125:LEU:HB3	1:A:216:LEU:HD21	1.95	0.47
1:A:41:PHE:HB2	1:A:56:ILE:HB	1.98	0.46
1:A:198:LYS:HD3	1:A:212:LEU:O	2.16	0.46
1:A:4:ARG:HD3	1:A:256:GLN:HA	1.97	0.46
1:A:224:ALA:HB2	1:A:484:VAL:HG13	1.99	0.45
1:A:377:LEU:HD11	1:A:384:ARG:HG2	2.00	0.44
1:A:328:ILE:HD11	1:A:348:GLU:HG3	2.00	0.43
1:A:107:PRO:HG3	1:A:190:LEU:HD12	1.99	0.43
1:A:149:LEU:HB2	1:A:172:ILE:HD11	2.01	0.43
1:A:390:GLU:HG2	1:A:399:ARG:HG2	2.01	0.42
1:A:60:GLY:O	1:A:464:GLY:HA3	2.20	0.41
1:A:126:LEU:HD23	1:A:216:LEU:HD13	2.03	0.41
1:B:330:THR:HG23	1:B:458:HIS:HB3	2.01	0.41
1:B:356:THR:OG1	1:B:459:CYS:HB3	2.21	0.40
1:B:211:GLN:HB3	1:B:213:LYS:HD2	2.04	0.40

There are no symmetry-related clashes.

5.3 Torsion angles

5.3.1 Protein backbone

In the following table, the Percentiles column shows the percent Ramachandran outliers of the chain as a percentile score with respect to all X-ray entries followed by that with respect to entries of similar resolution.

The Analysed column shows the number of residues for which the backbone conformation was analysed, and the total number of residues.

Mol	Chain	Analysed	Favoured	Allowed	Outliers	Percentiles	
1	A	458/526 (87%)	446 (97%)	9 (2%)	3 (1%)	22	18
1	B	457/526 (87%)	445 (97%)	11 (2%)	1 (0%)	47	49
All	All	915/1052 (87%)	891 (97%)	20 (2%)	4 (0%)	34	32

All (4) Ramachandran outliers are listed below:

Mol	Chain	Res	Type
1	A	115	GLY
1	A	301	VAL
1	B	505	VAL
1	A	505	VAL

5.3.2 Protein sidechains

In the following table, the Percentiles column shows the percent sidechain outliers of the chain as a percentile score with respect to all X-ray entries followed by that with respect to entries of similar resolution.

The Analysed column shows the number of residues for which the sidechain conformation was analysed, and the total number of residues.

Mol	Chain	Analysed	Rotameric	Outliers	Percentiles	
1	A	424/468 (91%)	408 (96%)	16 (4%)	33	34
1	B	422/468 (90%)	405 (96%)	17 (4%)	31	32
All	All	846/936 (90%)	813 (96%)	33 (4%)	32	33

All (33) residues with a non-rotameric sidechain are listed below:

Mol	Chain	Res	Type
1	A	48	ASN
1	A	87	GLN

Continued on next page...

Continued from previous page...

Mol	Chain	Res	Type
1	A	94	ASP
1	A	116	HIS
1	A	121	GLU
1	A	129	LYS
1	A	149	LEU
1	A	151	VAL
1	A	211	GLN
1	A	311	MET
1	A	413	ARG
1	A	439	LEU
1	A	447	GLU
1	A	477	ASP
1	A	484	VAL
1	A	508	GLU
1	B	47	ARG
1	B	70	LYS
1	B	96	ILE
1	B	152	ARG
1	B	171	MET
1	B	199	LYS
1	B	275	ASN
1	B	280	LYS
1	B	324	LYS
1	B	325	LYS
1	B	362	ARG
1	B	413	ARG
1	B	421	ARG
1	B	477	ASP
1	B	508	GLU
1	B	523	GLU
1	B	525	LEU

Some sidechains can be flipped to improve hydrogen bonding and reduce clashes. All (7) such sidechains are listed below:

Mol	Chain	Res	Type
1	A	211	GLN
1	A	256	GLN
1	B	87	GLN
1	B	200	ASN
1	B	211	GLN
1	B	281	ASN
1	B	444	HIS

5.3.3 RNA ⓘ

There are no RNA molecules in this entry.

5.4 Non-standard residues in protein, DNA, RNA chains ⓘ

There are no non-standard protein/DNA/RNA residues in this entry.

5.5 Carbohydrates ⓘ

There are no monosaccharides in this entry.

5.6 Ligand geometry ⓘ

9 ligands are modelled in this entry.

In the following table, the Counts columns list the number of bonds (or angles) for which Mogul statistics could be retrieved, the number of bonds (or angles) that are observed in the model and the number of bonds (or angles) that are defined in the Chemical Component Dictionary. The Link column lists molecule types, if any, to which the group is linked. The Z score for a bond length (or angle) is the number of standard deviations the observed value is removed from the expected value. A bond length (or angle) with $|Z| > 2$ is considered an outlier worth inspection. RMSZ is the root-mean-square of all Z scores of the bond lengths (or angles).

Mol	Type	Chain	Res	Link	Bond lengths			Bond angles		
					Counts	RMSZ	# $ Z > 2$	Counts	RMSZ	# $ Z > 2$
2	5OD	B	601	-	23,25,25	1.16	2 (8%)	28,37,37	1.81	11 (39%)
2	5OD	A	601	-	23,25,25	1.23	2 (8%)	28,37,37	1.88	9 (32%)
5	GOL	B	605	-	5,5,5	0.06	0	5,5,5	0.24	0
4	PO4	A	604	-	4,4,4	2.49	1 (25%)	6,6,6	0.49	0
3	DZS	B	602	-	29,36,36	1.98	7 (24%)	34,53,53	1.21	3 (8%)
3	DZS	A	602	-	29,36,36	1.97	7 (24%)	34,53,53	1.42	3 (8%)
4	PO4	B	604	-	4,4,4	2.47	1 (25%)	6,6,6	0.42	0
4	PO4	B	603	-	4,4,4	2.42	1 (25%)	6,6,6	0.68	0
4	PO4	A	603	-	4,4,4	2.05	1 (25%)	6,6,6	0.38	0

In the following table, the Chirals column lists the number of chiral outliers, the number of chiral centers analysed, the number of these observed in the model and the number defined in the Chemical Component Dictionary. Similar counts are reported in the Torsion and Rings columns. '-' means no outliers of that kind were identified.

Mol	Type	Chain	Res	Link	Chirals	Torsions	Rings
2	5OD	B	601	-	-	0/8/20/20	0/3/3/3
2	5OD	A	601	-	-	0/8/20/20	0/3/3/3
5	GOL	B	605	-	-	2/4/4/4	-
3	DZS	B	602	-	-	3/8/12/12	0/5/5/5
3	DZS	A	602	-	-	3/8/12/12	0/5/5/5

All (22) bond length outliers are listed below:

Mol	Chain	Res	Type	Atoms	Z	Observed(Å)	Ideal(Å)
3	B	602	DZS	C8-C4	6.37	1.53	1.41
3	A	602	DZS	C8-C4	5.99	1.52	1.41
4	A	604	PO4	P-O1	4.10	1.60	1.50
4	B	604	PO4	P-O1	4.07	1.60	1.50
4	B	603	PO4	P-O1	3.99	1.60	1.50
3	A	602	DZS	C19-C20	3.79	1.51	1.47
3	B	602	DZS	C19-C20	3.59	1.50	1.47
3	B	602	DZS	C4-C5	3.23	1.43	1.41
2	A	601	5OD	C1-C6	-3.18	1.41	1.45
2	B	601	5OD	C1-C6	-2.91	1.41	1.45
2	A	601	5OD	C23-C12	2.72	1.56	1.53
2	B	601	5OD	C23-C12	2.68	1.56	1.53
3	A	602	DZS	C4-C5	2.35	1.43	1.41
4	A	603	PO4	P-O1	2.35	1.56	1.50
3	A	602	DZS	C1-C6	2.20	1.41	1.36
3	B	602	DZS	C1-C6	2.19	1.41	1.36
3	B	602	DZS	C2-C3	2.11	1.41	1.36
3	A	602	DZS	C2-C3	2.11	1.41	1.36
3	B	602	DZS	C11-C10	2.06	1.42	1.39
3	B	602	DZS	C15-C10	2.06	1.43	1.39
3	A	602	DZS	C15-C10	2.04	1.43	1.39
3	A	602	DZS	C11-C10	2.02	1.42	1.39

All (26) bond angle outliers are listed below:

Mol	Chain	Res	Type	Atoms	Z	Observed(°)	Ideal(°)
2	A	601	5OD	C15-C16-CL2	-4.31	116.32	120.52
3	A	602	DZS	C3-C4-C5	4.19	119.85	117.96
2	B	601	5OD	C1-C6-N7	4.16	124.58	121.11
2	A	601	5OD	C1-C6-N7	4.01	124.45	121.11
3	A	602	DZS	C10-C9-N2	3.56	119.14	113.26
3	B	602	DZS	C10-C9-N2	3.53	119.10	113.26
3	B	602	DZS	C9-N2-C8	3.31	121.79	117.79

Continued on next page...

Continued from previous page...

Mol	Chain	Res	Type	Atoms	Z	Observed(°)	Ideal(°)
2	A	601	5OD	C10-C11-C12	3.30	118.98	113.22
3	A	602	DZS	C17-C16-N4	-3.30	119.06	123.58
2	B	601	5OD	C15-C16-CL2	-3.18	117.42	120.52
2	B	601	5OD	N5-C4-N9	3.17	120.11	116.55
2	A	601	5OD	C1-C6-N5	-3.05	118.11	120.09
2	B	601	5OD	C3-C4-N5	-2.82	117.50	121.32
2	B	601	5OD	C1-C6-N5	-2.67	118.35	120.09
2	A	601	5OD	C8-C15-CL1	2.66	121.97	119.66
2	A	601	5OD	C3-C4-N5	-2.61	117.79	121.32
2	A	601	5OD	C10-N9-C14	2.59	117.23	111.52
2	B	601	5OD	C8-C15-CL1	2.40	121.75	119.66
2	A	601	5OD	N5-C4-N9	2.40	119.24	116.55
2	B	601	5OD	C13-C14-N9	-2.26	106.34	110.34
2	A	601	5OD	C3-N2-C1	2.24	122.01	117.95
3	B	602	DZS	C18-C17-C23	2.17	120.22	117.55
2	B	601	5OD	C3-N2-C1	2.13	121.81	117.95
2	B	601	5OD	C10-N9-C14	2.11	116.17	111.52
2	B	601	5OD	C16-C15-CL1	-2.06	117.37	120.02
2	B	601	5OD	C8-C1-C6	2.02	124.84	122.34

There are no chirality outliers.

All (8) torsion outliers are listed below:

Mol	Chain	Res	Type	Atoms
5	B	605	GOL	C1-C2-C3-O3
3	B	602	DZS	C10-C9-N2-C7
3	B	602	DZS	N4-C16-C17-C18
3	B	602	DZS	N4-C16-C17-C23
3	A	602	DZS	N4-C16-C17-C18
3	A	602	DZS	N4-C16-C17-C23
3	A	602	DZS	C10-C9-N2-C7
5	B	605	GOL	O2-C2-C3-O3

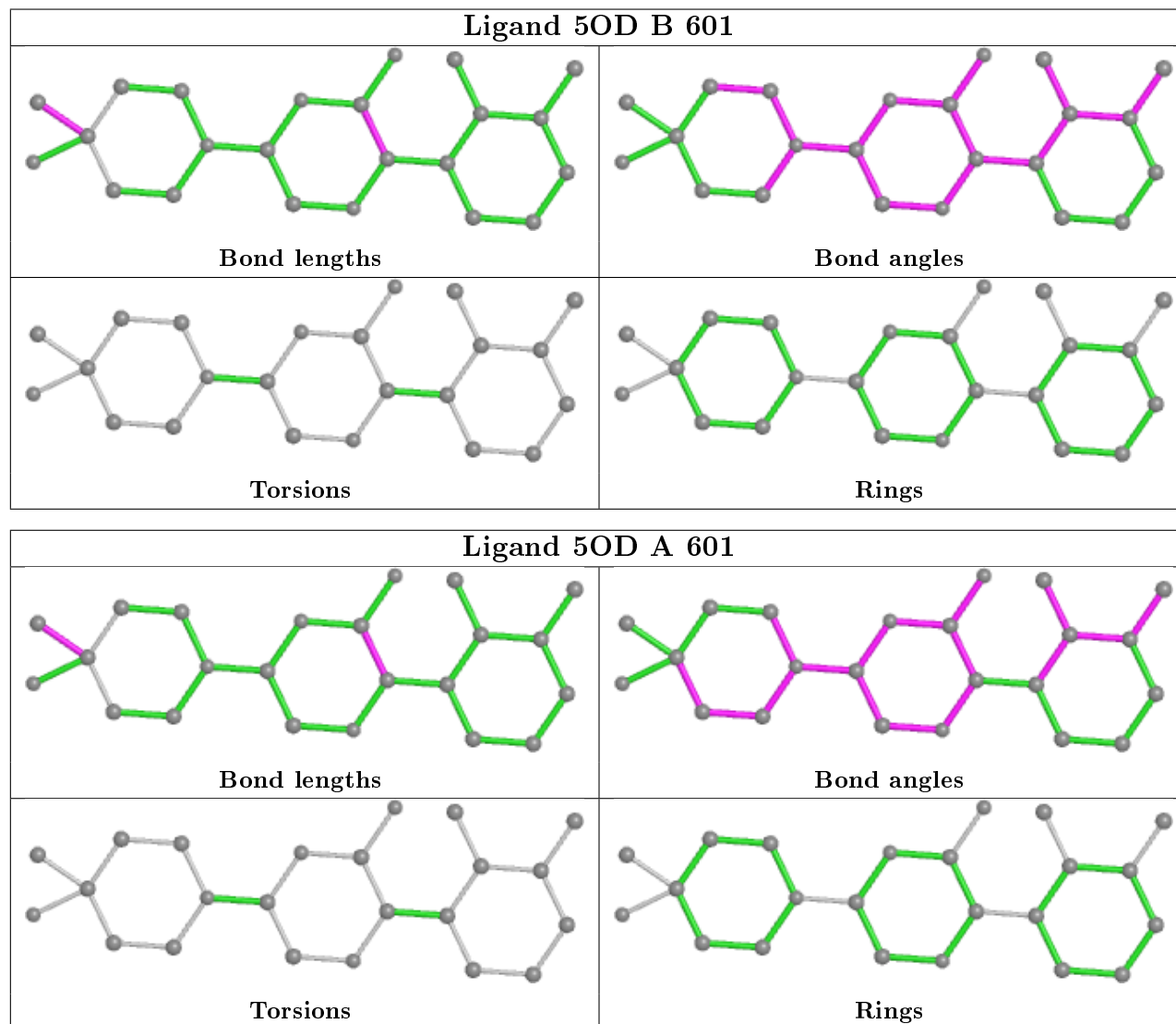
There are no ring outliers.

1 monomer is involved in 1 short contact:

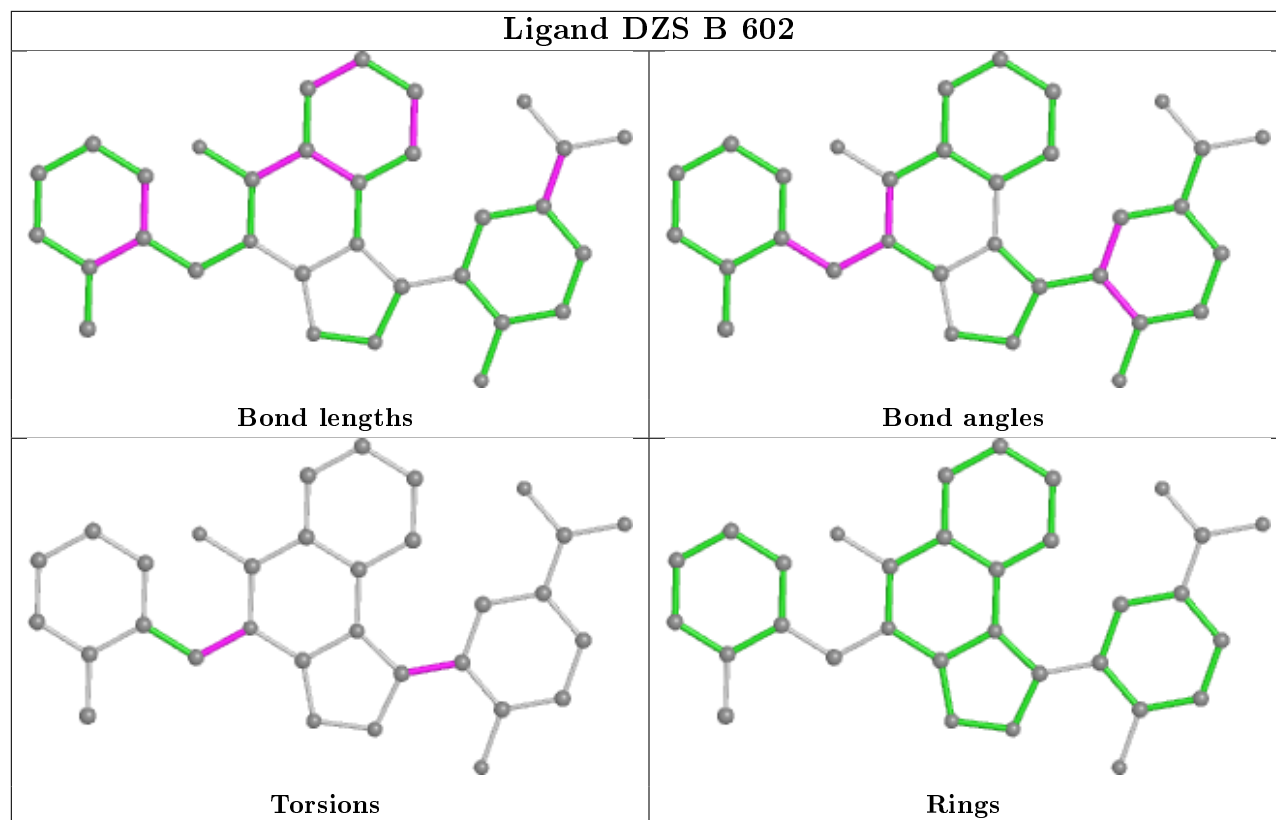
Mol	Chain	Res	Type	Clashes	Symm-Clashes
5	B	605	GOL	1	0

The following is a two-dimensional graphical depiction of Mogul quality analysis of bond lengths, bond angles, torsion angles, and ring geometry for all instances of the Ligand of Interest. In

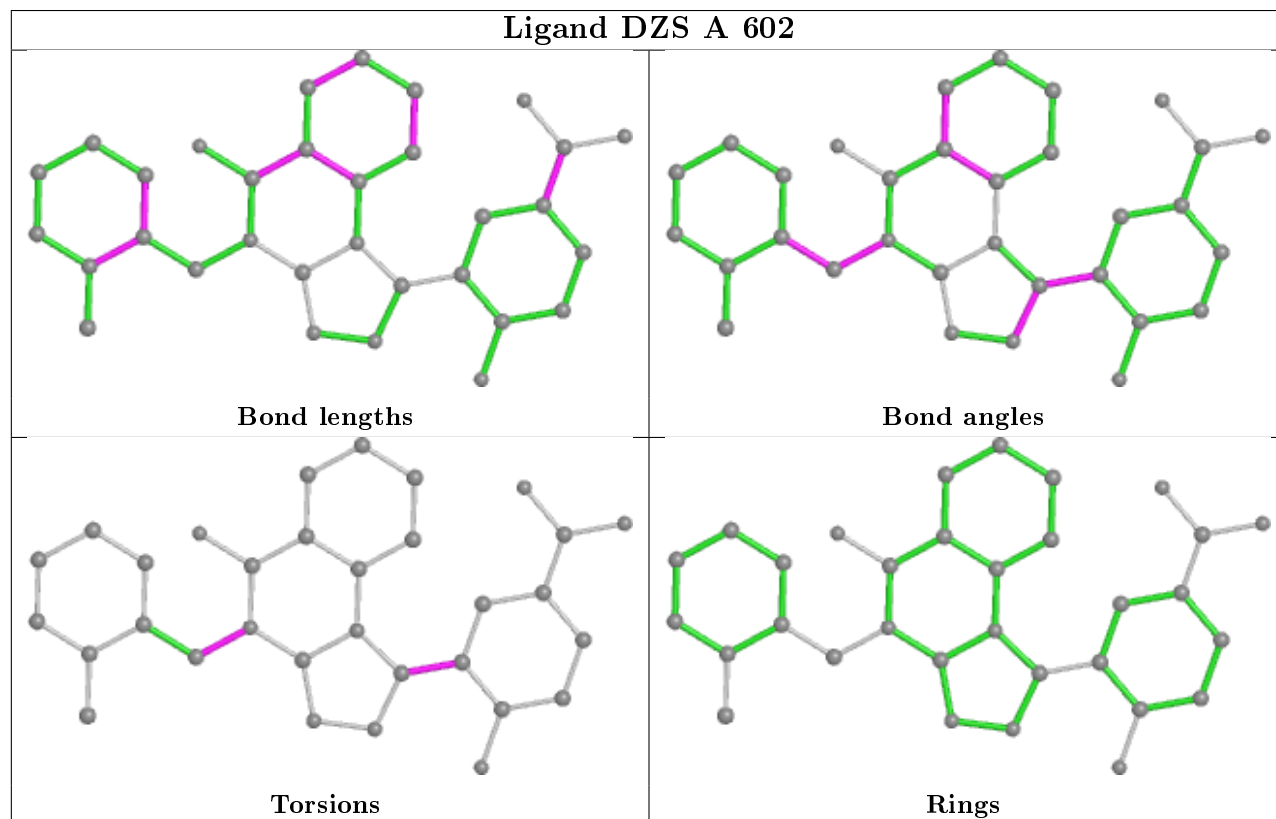
addition, ligands with molecular weight > 250 and outliers as shown on the validation Tables will also be included. For torsion angles, if less than 5% of the Mogul distribution of torsion angles is within 10 degrees of the torsion angle in question, then that torsion angle is considered an outlier. Any bond that is central to one or more torsion angles identified as an outlier by Mogul will be highlighted in the graph. For rings, the root-mean-square deviation (RMSD) between the ring in question and similar rings identified by Mogul is calculated over all ring torsion angles. If the average RMSD is greater than 60 degrees and the minimal RMSD between the ring in question and any Mogul-identified rings is also greater than 60 degrees, then that ring is considered an outlier. The outliers are highlighted in purple. The color gray indicates Mogul did not find sufficient equivalents in the CSD to analyse the geometry.



Ligand DZS B 602



Ligand DZS A 602



5.7 Other polymers

There are no such residues in this entry.

5.8 Polymer linkage issues

There are no chain breaks in this entry.

6 Fit of model and data ⓘ

6.1 Protein, DNA and RNA chains ⓘ

In the following table, the column labelled ‘#RSRZ> 2’ contains the number (and percentage) of RSRZ outliers, followed by percent RSRZ outliers for the chain as percentile scores relative to all X-ray entries and entries of similar resolution. The OWAB column contains the minimum, median, 95th percentile and maximum values of the occupancy-weighted average B-factor per residue. The column labelled ‘Q< 0.9’ lists the number of (and percentage) of residues with an average occupancy less than 0.9.

Mol	Chain	Analysed	<RSRZ>	#RSRZ>2	OWAB(Å ²)	Q<0.9
1	A	475/526 (90%)	0.29	12 (2%) 57 62	22, 41, 67, 83	0
1	B	473/526 (89%)	0.31	15 (3%) 47 54	20, 41, 66, 84	0
All	All	948/1052 (90%)	0.30	27 (2%) 53 59	20, 41, 67, 84	0

All (27) RSRZ outliers are listed below:

Mol	Chain	Res	Type	RSRZ
1	B	426	HIS	5.7
1	B	177	LEU	3.6
1	A	205	THR	3.4
1	A	95	VAL	3.3
1	A	116	HIS	3.1
1	B	205	THR	2.9
1	B	171	MET	2.8
1	A	525	LEU	2.7
1	B	85	HIS	2.7
1	B	451	ASP	2.7
1	B	117	LEU	2.7
1	A	182	GLY	2.6
1	B	206	LEU	2.6
1	A	177	LEU	2.5
1	A	85	HIS	2.5
1	A	121	GLU	2.4
1	A	14	VAL	2.4
1	B	116	HIS	2.4
1	B	96	ILE	2.4
1	A	38	PRO	2.3
1	A	47	ARG	2.3
1	B	311	MET	2.2
1	B	301	VAL	2.2
1	A	3	SER	2.2

Continued on next page...

Continued from previous page...

Mol	Chain	Res	Type	RSRZ
1	B	191	THR	2.1
1	B	362	ARG	2.0
1	B	14	VAL	2.0

6.2 Non-standard residues in protein, DNA, RNA chains [i](#)

There are no non-standard protein/DNA/RNA residues in this entry.

6.3 Carbohydrates [i](#)

There are no monosaccharides in this entry.

6.4 Ligands [i](#)

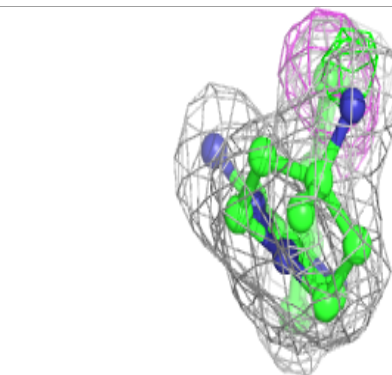
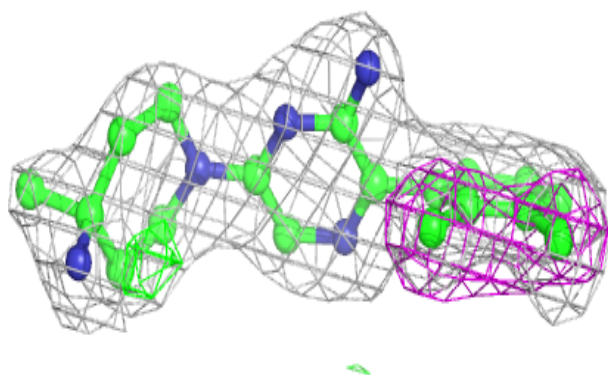
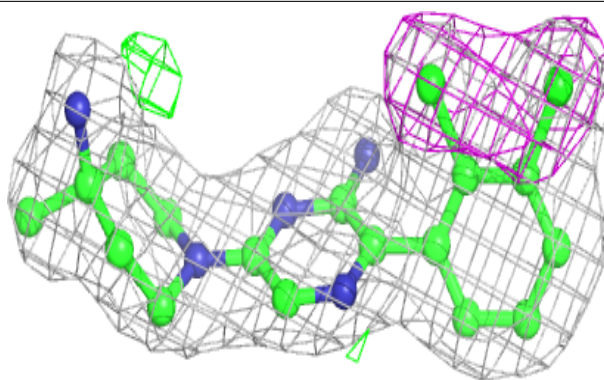
In the following table, the Atoms column lists the number of modelled atoms in the group and the number defined in the chemical component dictionary. The B-factors column lists the minimum, median, 95th percentile and maximum values of B factors of atoms in the group. The column labelled 'Q< 0.9' lists the number of atoms with occupancy less than 0.9.

Mol	Type	Chain	Res	Atoms	RSCC	RSR	B-factors(Å ²)	Q<0.9
4	PO4	A	604	5/5	0.79	0.17	89,90,92,92	0
4	PO4	B	604	5/5	0.83	0.23	103,103,104,105	0
4	PO4	A	603	5/5	0.83	0.23	101,102,102,102	0
2	5OD	A	601	23/23	0.91	0.13	33,37,43,45	0
5	GOL	B	605	6/6	0.92	0.16	51,56,58,61	0
2	5OD	B	601	23/23	0.93	0.12	34,39,43,47	0
3	DZS	B	602	32/32	0.93	0.13	30,34,42,50	0
3	DZS	A	602	32/32	0.95	0.12	30,35,46,53	0
4	PO4	B	603	5/5	0.96	0.12	49,50,52,56	0

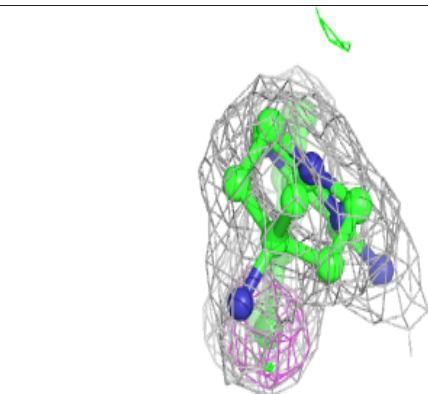
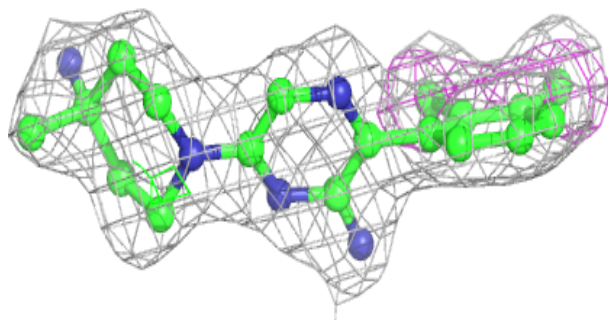
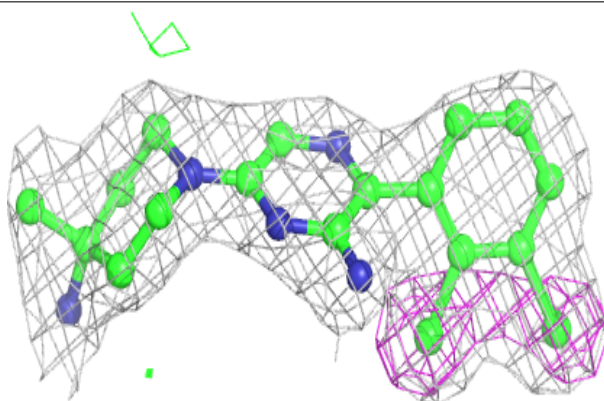
The following is a graphical depiction of the model fit to experimental electron density of all instances of the Ligand of Interest. In addition, ligands with molecular weight > 250 and outliers as shown on the geometry validation Tables will also be included. Each fit is shown from different orientation to approximate a three-dimensional view.

Electron density around 5OD A 601:

$2mF_o-DF_c$ (at 0.7 rmsd) in gray
 mF_o-DF_c (at 3 rmsd) in purple (negative)
and green (positive)

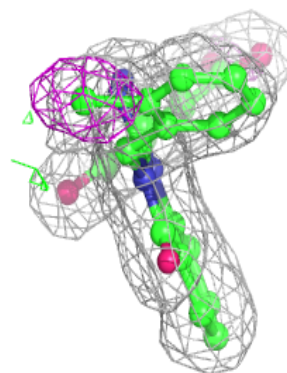
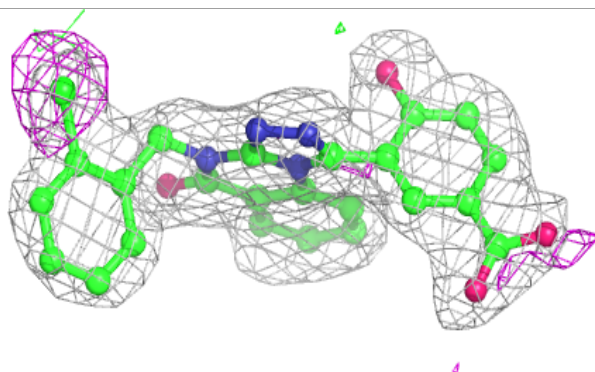
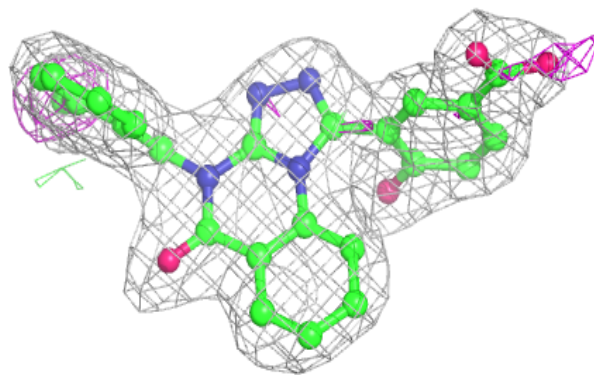
**Electron density around 5OD B 601:**

$2mF_o-DF_c$ (at 0.7 rmsd) in gray
 mF_o-DF_c (at 3 rmsd) in purple (negative)
and green (positive)

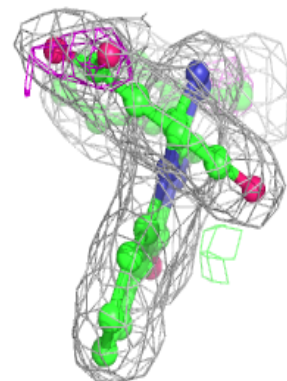
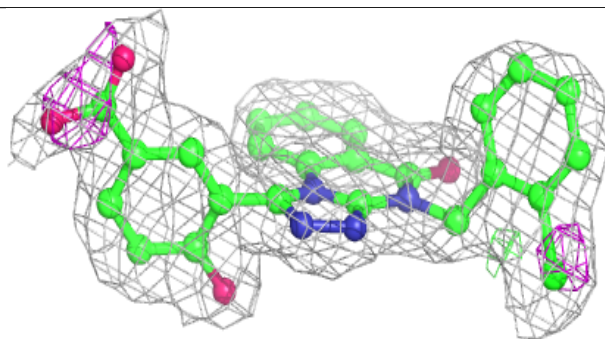
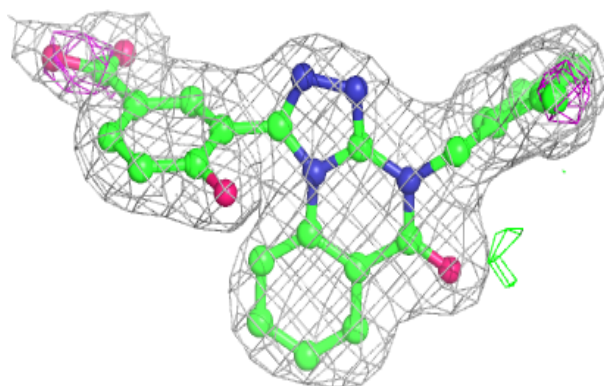


Electron density around DZS B 602:

$2mF_o-DF_c$ (at 0.7 rmsd) in gray
 mF_o-DF_c (at 3 rmsd) in purple (negative)
and green (positive)

**Electron density around DZS A 602:**

$2mF_o-DF_c$ (at 0.7 rmsd) in gray
 mF_o-DF_c (at 3 rmsd) in purple (negative)
and green (positive)



6.5 Other polymers

There are no such residues in this entry.