



# Full wwPDB X-ray Structure Validation Report ⓘ

May 13, 2020 – 09:46 am BST

PDB ID : 6BN5  
Title : Non-receptor Protein Tyrosine Phosphatase SHP2 F285S in Complex with  
Allosteric Inhibitor JLR-2  
Authors : Blacklow, S.C.; Stams, T.; Fodor, M.; LaRochelle, J.R.  
Deposited on : 2017-11-16  
Resolution : 2.22 Å(reported)

This is a Full wwPDB X-ray Structure Validation Report for a publicly released PDB entry.

We welcome your comments at [validation@mail.wwpdb.org](mailto:validation@mail.wwpdb.org)

A user guide is available at

<https://www.wwpdb.org/validation/2017/XrayValidationReportHelp>

with specific help available everywhere you see the ⓘ symbol.

---

The following versions of software and data (see [references ⓘ](#)) were used in the production of this report:

MolProbity : 4.02b-467  
Mogul : 1.8.5 (274361), CSD as541be (2020)  
Xtriage (Phenix) : 1.13  
EDS : 2.11  
buster-report : 1.1.7 (2018)  
Percentile statistics : 20191225.v01 (using entries in the PDB archive December 25th 2019)  
Refmac : 5.8.0158  
CCP4 : 7.0.044 (Gargrove)  
Ideal geometry (proteins) : Engh & Huber (2001)  
Ideal geometry (DNA, RNA) : Parkinson et al. (1996)  
Validation Pipeline (wwPDB-VP) : 2.11

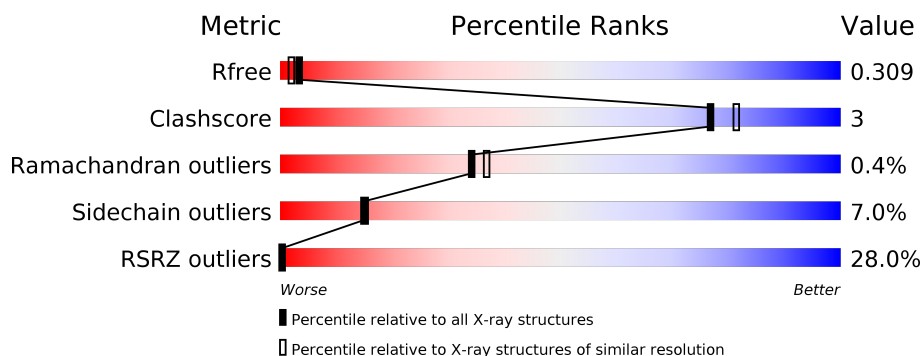
# 1 Overall quality at a glance ⓘ

The following experimental techniques were used to determine the structure:

*X-RAY DIFFRACTION*

The reported resolution of this entry is 2.22 Å.

Percentile scores (ranging between 0-100) for global validation metrics of the entry are shown in the following graphic. The table shows the number of entries on which the scores are based.



Metric	Whole archive (#Entries)	Similar resolution (#Entries, resolution range(Å))
$R_{free}$	130704	5912 (2.24-2.20)
Clashscore	141614	6646 (2.24-2.20)
Ramachandran outliers	138981	6543 (2.24-2.20)
Sidechain outliers	138945	6544 (2.24-2.20)
RSRZ outliers	127900	5797 (2.24-2.20)

The table below summarises the geometric issues observed across the polymeric chains and their fit to the electron density. The red, orange, yellow and green segments on the lower bar indicate the fraction of residues that contain outliers for  $\geq 3$ , 2, 1 and 0 types of geometric quality criteria respectively. A grey segment represents the fraction of residues that are not modelled. The numeric value for each fraction is indicated below the corresponding segment, with a dot representing fractions  $\leq 5\%$ . The upper red bar (where present) indicates the fraction of residues that have poor fit to the electron density. The numeric value is given above the bar.

Mol	Chain	Length	Quality of chain
1	A	526	<div> <div>24%</div> <div> <div></div> <div>75%</div> <div>10%</div> <div>15%</div> </div> </div>
1	B	526	<div> <div>24%</div> <div> <div></div> <div>70%</div> <div>14%</div> <div>15%</div> </div> </div>

## 2 Entry composition [i](#)

There are 3 unique types of molecules in this entry. The entry contains 7517 atoms, of which 0 are hydrogens and 0 are deuteriums.

In the tables below, the ZeroOcc column contains the number of atoms modelled with zero occupancy, the AltConf column contains the number of residues with at least one atom in alternate conformation and the Trace column contains the number of residues modelled with at most 2 atoms.

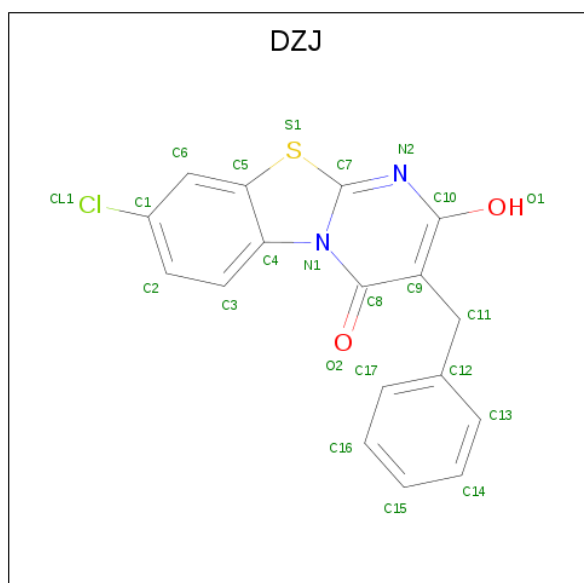
- Molecule 1 is a protein called Tyrosine-protein phosphatase non-receptor type 11.

Mol	Chain	Residues	Atoms					ZeroOcc	AltConf	Trace
1	A	448	Total	C	N	O	S	0	0	0
			3631	2295	640	678	18			
1	B	448	Total	C	N	O	S	0	0	0
			3649	2307	650	674	18			

There are 4 discrepancies between the modelled and reference sequences:

Chain	Residue	Modelled	Actual	Comment	Reference
A	0	SER	-	expression tag	UNP Q06124
A	285	SER	PHE	engineered mutation	UNP Q06124
B	0	SER	-	expression tag	UNP Q06124
B	285	SER	PHE	engineered mutation	UNP Q06124

- Molecule 2 is 3-benzyl-8-chloro-2-hydroxy-4H-pyrimido[2,1-b][1,3]benzothiazol-4-one (three-letter code: DZJ) (formula: C<sub>17</sub>H<sub>11</sub>ClN<sub>2</sub>O<sub>2</sub>S) (labeled as "Ligand of Interest" by author).



Mol	Chain	Residues	Atoms						ZeroOcc	AltConf
2	A	1	Total 23	C 17	Cl 1	N 2	O 2	S 1	0	0
2	B	1	Total 23	C 17	Cl 1	N 2	O 2	S 1	0	0

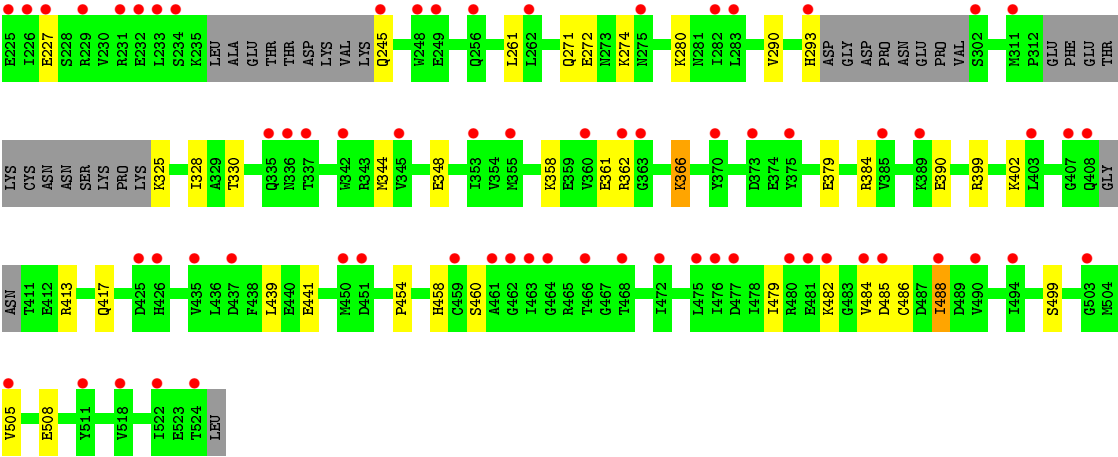
- Molecule 3 is water.

Mol	Chain	Residues	Atoms		ZeroOcc	AltConf
3	A	104	Total 104	O 104	0	0
3	B	87	Total 87	O 87	0	0

These plots are drawn for all protein, RNA and DNA chains in the entry. The first graphic for a chain summarises the proportions of the various outlier classes displayed in the second graphic. The second graphic shows the sequence view annotated by issues in geometry and electron density. Residues are color-coded according to the number of geometric quality criteria for which they contain at least one outlier: green = 0, yellow = 1, orange = 2 and red = 3 or more. A red dot above a residue indicates a poor fit to the electron density ( $\text{RSRZ} > 2$ ). Stretches of 2 or more consecutive residues without any outlier are shown as a green connector. Residues present in the sample, but not in the model, are shown in grey.

- [illegible]

- Chain B:
- 
- Sequence logo for Chain B, showing amino acid conservation across 100 positions. The y-axis represents information content in bits (0.00 to 0.20). The x-axis shows positions 1 to 100. A color key identifies amino acids: R (red), K (orange), Q (yellow), N (light green), D (green), E (dark green), C (blue), S (light blue), T (teal), P (dark teal), L (grey), I (dark grey), V (black), M (dark blue), G (light grey), A (white), and Y (yellow). A bar at the top indicates the percentage of conserved residues: 24% (red), 70% (green), 14% (yellow), and 15% (grey).



## 4 Data and refinement statistics

Property	Value	Source
Space group	P 1 21 1	Depositor
Cell constants a, b, c, $\alpha$ , $\beta$ , $\gamma$	46.19 Å   212.23 Å   55.47 Å 90.00°   96.23°   90.00°	Depositor
Resolution (Å)	22.38 – 2.22 22.09 – 2.22	Depositor EDS
% Data completeness (in resolution range)	92.0 (22.38-2.22) 92.0 (22.09-2.22)	Depositor EDS
$R_{merge}$	0.16	Depositor
$R_{sym}$	(Not available)	Depositor
$\langle I/\sigma(I) \rangle$ <sup>1</sup>	2.42 (at 2.21 Å)	Xtriage
Refinement program	BUSTER 2.11.6	Depositor
R, $R_{free}$	0.236   ,   0.292 0.250   ,   0.309	Depositor DCC
$R_{free}$ test set	2413 reflections (5.04%)	wwPDB-VP
Wilson B-factor (Å <sup>2</sup> )	36.5	Xtriage
Anisotropy	0.575	Xtriage
Bulk solvent $k_{sol}$ (e/Å <sup>3</sup> ), $B_{sol}$ (Å <sup>2</sup> )	0.35 , 56.4	EDS
L-test for twinning <sup>2</sup>	$\langle  L  \rangle = 0.48$ , $\langle L^2 \rangle = 0.31$	Xtriage
Estimated twinning fraction	No twinning to report.	Xtriage
$F_o, F_c$ correlation	0.91	EDS
Total number of atoms	7517	wwPDB-VP
Average B, all atoms (Å <sup>2</sup> )	45.0	wwPDB-VP

Xtriage's analysis on translational NCS is as follows: *The largest off-origin peak in the Patterson function is 8.42% of the height of the origin peak. No significant pseudotranslation is detected.*

<sup>1</sup>Intensities estimated from amplitudes.

<sup>2</sup>Theoretical values of  $\langle |L| \rangle$ ,  $\langle L^2 \rangle$  for acentric reflections are 0.5, 0.333 respectively for untwinned datasets, and 0.375, 0.2 for perfectly twinned datasets.

## 5 Model quality

### 5.1 Standard geometry

Bond lengths and bond angles in the following residue types are not validated in this section: DZJ

The Z score for a bond length (or angle) is the number of standard deviations the observed value is removed from the expected value. A bond length (or angle) with  $|Z| > 5$  is considered an outlier worth inspection. RMSZ is the root-mean-square of all Z scores of the bond lengths (or angles).

Mol	Chain	Bond lengths		Bond angles	
		RMSZ	$\# Z  > 5$	RMSZ	$\# Z  > 5$
1	A	0.51	0/3701	0.70	0/4987
1	B	0.51	0/3720	0.70	0/5008
All	All	0.51	0/7421	0.70	0/9995

There are no bond length outliers.

There are no bond angle outliers.

There are no chirality outliers.

There are no planarity outliers.

### 5.2 Too-close contacts

In the following table, the Non-H and H(model) columns list the number of non-hydrogen atoms and hydrogen atoms in the chain respectively. The H(added) column lists the number of hydrogen atoms added and optimized by MolProbity. The Clashes column lists the number of clashes within the asymmetric unit, whereas Symm-Clashes lists symmetry related clashes.

Mol	Chain	Non-H	H(model)	H(added)	Clashes	Symm-Clashes
1	A	3631	0	3558	18	0
1	B	3649	0	3595	26	0
2	A	23	0	0	0	0
2	B	23	0	0	0	0
3	A	104	0	0	3	0
3	B	87	0	0	0	0
All	All	7517	0	7153	44	0

The all-atom clashscore is defined as the number of clashes found per 1000 atoms (including hydrogen atoms). The all-atom clashscore for this structure is 3.

All (44) close contacts within the same asymmetric unit are listed below, sorted by their clash

magnitude.

Atom-1	Atom-2	Interatomic distance (Å)	Clash overlap (Å)
1:A:310:ILE:HD11	1:A:329:ALA:HB2	1.60	0.81
1:B:290:VAL:HG11	1:B:344:MET:HG3	1.70	0.73
1:B:390:GLU:HG2	1:B:399:ARG:HG2	1.71	0.72
1:B:65:LEU:HD23	1:B:68:GLY:HA3	1.78	0.65
1:A:310:ILE:HD13	1:A:470:ILE:HD13	1.77	0.65
1:A:330:THR:HG23	1:A:458:HIS:HB3	1.79	0.64
1:B:379:GLU:HG2	1:B:384:ARG:HG3	1.82	0.59
1:B:330:THR:HG23	1:B:458:HIS:HB3	1.85	0.59
1:A:497:VAL:HG11	3:A:757:HOH:O	2.03	0.58
1:B:271:GLN:HA	1:B:274:LYS:HD2	1.87	0.57
1:B:261:LEU:HD22	1:B:499:SER:HB3	1.87	0.56
1:B:17:GLU:O	1:B:21:LEU:HB2	2.07	0.55
1:A:41:PHE:HB2	1:A:56:ILE:HB	1.90	0.54
1:A:330:THR:CG2	1:A:458:HIS:HB3	2.38	0.53
1:A:198:LYS:HA	1:A:212:LEU:HB2	1.91	0.52
1:B:6:TRP:HB3	1:B:101:PRO:HB3	1.90	0.52
1:A:310:ILE:HD11	1:A:329:ALA:CB	2.35	0.52
1:B:107:PRO:HG3	1:B:190:LEU:HD12	1.93	0.51
1:B:328:ILE:HD11	1:B:348:GLU:HG3	1.91	0.51
1:A:309:ILE:HD13	1:A:328:ILE:HG12	1.92	0.50
1:A:467:GLY:HA2	3:A:757:HOH:O	2.10	0.50
1:A:461:ALA:HB3	3:A:735:HOH:O	2.12	0.49
1:B:482:LYS:HB3	1:B:486:CYS:HB3	1.95	0.48
1:A:134:SER:HA	1:A:214:GLN:O	2.13	0.48
1:A:65:LEU:HD23	1:A:68:GLY:HA3	1.94	0.47
1:B:149:LEU:HB2	1:B:172:ILE:HD11	1.95	0.47
1:A:6:TRP:HB3	1:A:101:PRO:HB3	1.96	0.47
1:A:263:TYR:HE2	1:A:265:ARG:HD2	1.81	0.46
1:B:361:GLU:HB2	1:B:366:LYS:HD3	1.97	0.46
1:A:290:VAL:HG11	1:A:344:MET:HG3	1.98	0.46
1:B:482:LYS:HD3	1:B:486:CYS:HB2	1.98	0.45
1:B:125:LEU:HD22	1:B:216:LEU:HD21	1.98	0.45
1:B:80:TYR:CE2	1:B:84:HIS:HE1	2.35	0.45
1:B:41:PHE:HB2	1:B:56:ILE:HB	1.99	0.45
1:B:126:LEU:HD23	1:B:216:LEU:HD13	1.98	0.44
1:B:28:SER:HA	1:B:100:TYR:O	2.18	0.44
1:B:8:HIS:HB3	1:B:11:ILE:HG12	2.00	0.43
1:B:43:LEU:HB3	1:B:54:ILE:HB	2.01	0.42
1:B:399:ARG:HD2	1:B:417:GLN:OE1	2.20	0.42
1:A:19:LEU:HD22	1:A:102:LEU:HD21	2.02	0.41
1:B:366:LYS:HG3	1:B:460:SER:HB3	2.02	0.41

*Continued on next page...*

*Continued from previous page...*

Atom-1	Atom-2	Interatomic distance (Å)	Clash overlap (Å)
1:B:479:ILE:HD11	1:B:488:ILE:HD13	2.02	0.41
1:B:72:ALA:HB3	1:B:76:GLU:OE1	2.21	0.41
1:A:273:ASN:HA	1:A:276:LYS:HD2	2.02	0.41

There are no symmetry-related clashes.

## 5.3 Torsion angles [i](#)

### 5.3.1 Protein backbone [i](#)

In the following table, the Percentiles column shows the percent Ramachandran outliers of the chain as a percentile score with respect to all X-ray entries followed by that with respect to entries of similar resolution.

The Analysed column shows the number of residues for which the backbone conformation was analysed, and the total number of residues.

Mol	Chain	Analysed	Favoured	Allowed	Outliers	Percentiles	
1	A	424/526 (81%)	402 (95%)	21 (5%)	1 (0%)	47	54
1	B	424/526 (81%)	404 (95%)	18 (4%)	2 (0%)	29	30
All	All	848/1052 (81%)	806 (95%)	39 (5%)	3 (0%)	34	37

All (3) Ramachandran outliers are listed below:

Mol	Chain	Res	Type
1	B	111	ARG
1	A	505	VAL
1	B	505	VAL

### 5.3.2 Protein sidechains [i](#)

In the following table, the Percentiles column shows the percent sidechain outliers of the chain as a percentile score with respect to all X-ray entries followed by that with respect to entries of similar resolution.

The Analysed column shows the number of residues for which the sidechain conformation was analysed, and the total number of residues.

*Continued on next page...*

*Continued from previous page...*

Mol	Chain	Analysed	Rotameric	Outliers	Percentiles	
1	A	398/468 (85%)	373 (94%)	25 (6%)	18	19
1	B	400/468 (86%)	369 (92%)	31 (8%)	12	11
All	All	798/936 (85%)	742 (93%)	56 (7%)	15	15

All (56) residues with a non-rotameric sidechain are listed below:

Mol	Chain	Res	Type
1	A	12	THR
1	A	14	VAL
1	A	32	ARG
1	A	40	ASP
1	A	55	LYS
1	A	146	ASP
1	A	152	ARG
1	A	153	THR
1	A	173	ARG
1	A	175	GLN
1	A	200	ASN
1	A	206	LEU
1	A	227	GLU
1	A	249	GLU
1	A	325	LYS
1	A	333	CYS
1	A	335	GLN
1	A	389	LYS
1	A	402	LYS
1	A	413	ARG
1	A	431	ASP
1	A	439	LEU
1	A	477	ASP
1	A	481	GLU
1	A	485	ASP
1	B	4	ARG
1	B	23	ARG
1	B	57	GLN
1	B	97	GLU
1	B	117	LEU
1	B	152	ARG
1	B	153	THR

*Continued on next page...*

*Continued from previous page...*

Mol	Chain	Res	Type
1	B	166	LYS
1	B	171	MET
1	B	178	LYS
1	B	214	GLN
1	B	218	THR
1	B	221	ILE
1	B	227	GLU
1	B	245	GLN
1	B	272	GLU
1	B	280	LYS
1	B	293	HIS
1	B	325	LYS
1	B	358	LYS
1	B	362	ARG
1	B	366	LYS
1	B	402	LYS
1	B	413	ARG
1	B	439	LEU
1	B	441	GLU
1	B	454	PRO
1	B	484	VAL
1	B	485	ASP
1	B	488	ILE
1	B	508	GLU

Some sidechains can be flipped to improve hydrogen bonding and reduce clashes. All (5) such sidechains are listed below:

Mol	Chain	Res	Type
1	A	114	HIS
1	A	175	GLN
1	A	245	GLN
1	A	520	HIS
1	B	84	HIS

### 5.3.3 RNA ⓘ

There are no RNA molecules in this entry.

## 5.4 Non-standard residues in protein, DNA, RNA chains [i](#)

There are no non-standard protein/DNA/RNA residues in this entry.

## 5.5 Carbohydrates [i](#)

There are no carbohydrates in this entry.

## 5.6 Ligand geometry [i](#)

2 ligands are modelled in this entry.

In the following table, the Counts columns list the number of bonds (or angles) for which Mogul statistics could be retrieved, the number of bonds (or angles) that are observed in the model and the number of bonds (or angles) that are defined in the Chemical Component Dictionary. The Link column lists molecule types, if any, to which the group is linked. The Z score for a bond length (or angle) is the number of standard deviations the observed value is removed from the expected value. A bond length (or angle) with  $|Z| > 2$  is considered an outlier worth inspection. RMSZ is the root-mean-square of all Z scores of the bond lengths (or angles).

Mol	Type	Chain	Res	Link	Bond lengths			Bond angles		
					Counts	RMSZ	$\# Z  > 2$	Counts	RMSZ	$\# Z  > 2$
2	DZJ	A	601	-	22,26,26	2.10	8 (36%)	20,38,38	2.06	2 (10%)
2	DZJ	B	601	-	22,26,26	2.09	9 (40%)	20,38,38	2.03	3 (15%)

In the following table, the Chirals column lists the number of chiral outliers, the number of chiral centers analysed, the number of these observed in the model and the number defined in the Chemical Component Dictionary. Similar counts are reported in the Torsion and Rings columns. '-' means no outliers of that kind were identified.

Mol	Type	Chain	Res	Link	Chirals	Torsions	Rings
2	DZJ	A	601	-	-	1/4/4/4	0/4/4/4
2	DZJ	B	601	-	-	1/4/4/4	0/4/4/4

All (17) bond length outliers are listed below:

Mol	Chain	Res	Type	Atoms	Z	Observed(Å)	Ideal(Å)
2	A	601	DZJ	C7-N2	-4.10	1.29	1.34
2	A	601	DZJ	C8-C9	3.97	1.50	1.41
2	B	601	DZJ	C8-C9	3.93	1.49	1.41
2	B	601	DZJ	C7-N2	-3.52	1.30	1.34
2	B	601	DZJ	C3-C2	3.21	1.43	1.36
2	B	601	DZJ	C9-C10	-3.16	1.36	1.39

*Continued on next page...*

*Continued from previous page...*

Mol	Chain	Res	Type	Atoms	Z	Observed(Å)	Ideal(Å)
2	A	601	DZJ	C3-C2	3.10	1.43	1.36
2	B	601	DZJ	C5-S1	-2.84	1.71	1.74
2	B	601	DZJ	C6-C1	2.61	1.41	1.36
2	A	601	DZJ	C9-C10	-2.60	1.37	1.39
2	A	601	DZJ	C6-C1	2.59	1.41	1.36
2	A	601	DZJ	C5-S1	-2.44	1.72	1.74
2	B	601	DZJ	C17-C12	2.42	1.44	1.38
2	A	601	DZJ	C2-C1	2.34	1.42	1.38
2	A	601	DZJ	C17-C12	2.25	1.43	1.38
2	B	601	DZJ	C2-C1	2.15	1.42	1.38
2	B	601	DZJ	C13-C12	2.00	1.43	1.38

All (5) bond angle outliers are listed below:

Mol	Chain	Res	Type	Atoms	Z	Observed(°)	Ideal(°)
2	B	601	DZJ	C8-C9-C10	7.47	118.32	113.99
2	A	601	DZJ	C8-C9-C10	7.37	118.26	113.99
2	A	601	DZJ	O1-C10-N2	-3.27	108.89	117.81
2	B	601	DZJ	C2-C1-C6	-2.75	118.74	121.99
2	B	601	DZJ	O1-C10-N2	-2.65	110.58	117.81

There are no chirality outliers.

All (2) torsion outliers are listed below:

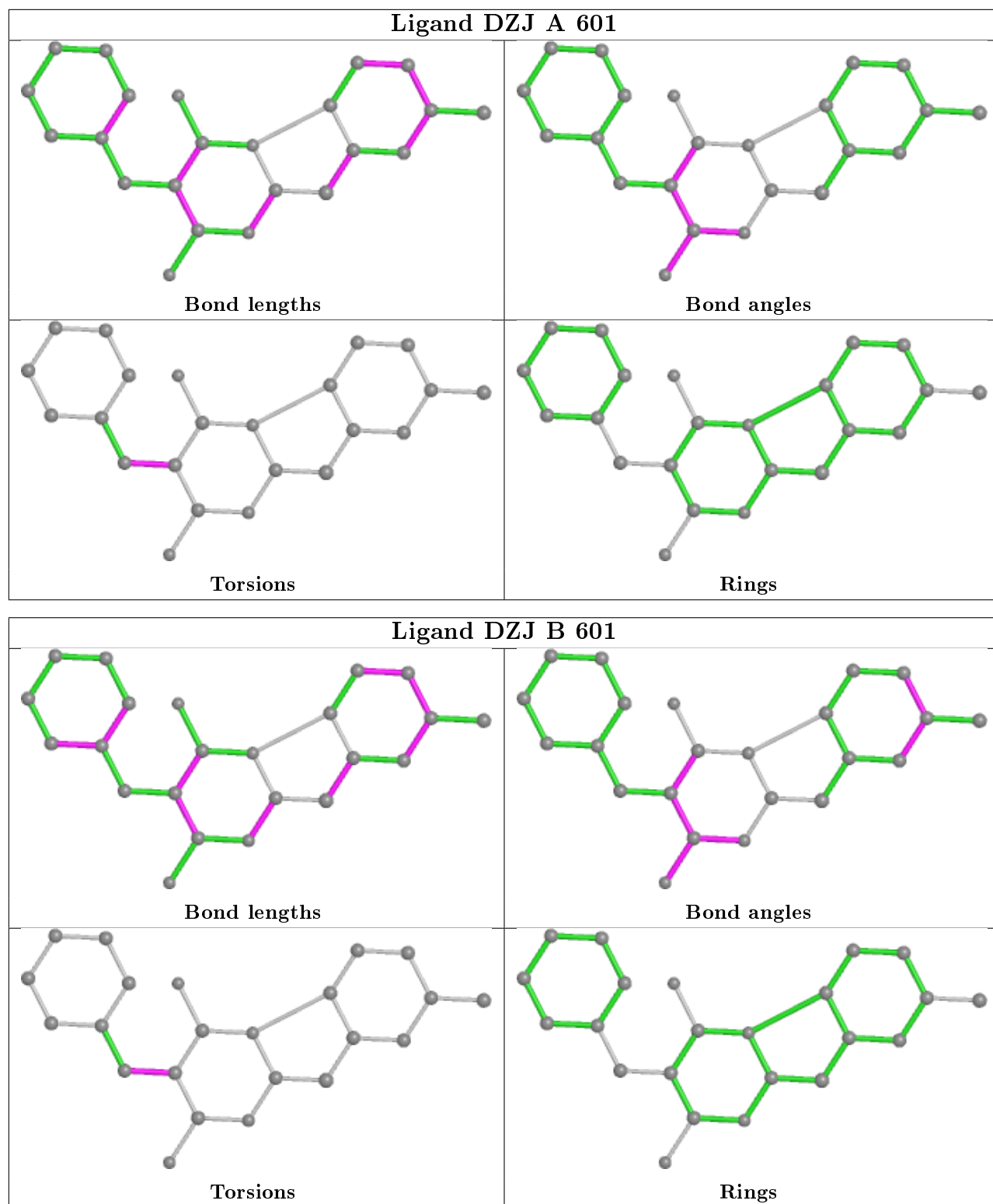
Mol	Chain	Res	Type	Atoms
2	B	601	DZJ	C12-C11-C9-C10
2	A	601	DZJ	C12-C11-C9-C10

There are no ring outliers.

No monomer is involved in short contacts.

The following is a two-dimensional graphical depiction of Mogul quality analysis of bond lengths, bond angles, torsion angles, and ring geometry for all instances of the Ligand of Interest. In addition, ligands with molecular weight > 250 and outliers as shown on the validation Tables will also be included. For torsion angles, if less than 5% of the Mogul distribution of torsion angles is within 10 degrees of the torsion angle in question, then that torsion angle is considered an outlier. Any bond that is central to one or more torsion angles identified as an outlier by Mogul will be highlighted in the graph. For rings, the root-mean-square deviation (RMSD) between the ring in question and similar rings identified by Mogul is calculated over all ring torsion angles. If the average RMSD is greater than 60 degrees and the minimal RMSD between the ring in question and any Mogul-identified rings is also greater than 60 degrees, then that ring is considered an outlier. The outliers are highlighted in purple. The color gray indicates Mogul did not find sufficient

equivalents in the CSD to analyse the geometry.



## 5.7 Other polymers ⓘ

There are no such residues in this entry.

## 5.8 Polymer linkage issues ⓘ

There are no chain breaks in this entry.

## 6 Fit of model and data ⓘ

### 6.1 Protein, DNA and RNA chains ⓘ

In the following table, the column labelled ‘#RSRZ> 2’ contains the number (and percentage) of RSRZ outliers, followed by percent RSRZ outliers for the chain as percentile scores relative to all X-ray entries and entries of similar resolution. The OWAB column contains the minimum, median, 95<sup>th</sup> percentile and maximum values of the occupancy-weighted average B-factor per residue. The column labelled ‘Q< 0.9’ lists the number of (and percentage) of residues with an average occupancy less than 0.9.

Mol	Chain	Analysed	<RSRZ>	#RSRZ>2	OWAB(Å <sup>2</sup> )	Q<0.9
1	A	448/526 (85%)	1.51	125 (27%) 0 0	20, 44, 68, 87	0
1	B	448/526 (85%)	1.50	126 (28%) 0 0	20, 45, 68, 88	0
All	All	896/1052 (85%)	1.51	251 (28%) 0 0	20, 44, 68, 88	0

All (251) RSRZ outliers are listed below:

Mol	Chain	Res	Type	RSRZ
1	B	177	LEU	7.7
1	B	116	HIS	6.7
1	B	426	HIS	6.3
1	A	205	THR	6.2
1	A	409	GLY	6.1
1	A	116	HIS	6.0
1	A	233	LEU	5.9
1	A	13	GLY	5.7
1	B	48	ASN	5.7
1	A	66	TYR	5.5
1	A	514	ILE	5.1
1	A	311	MET	5.1
1	B	363	GLY	4.9
1	A	124	LYS	4.8
1	A	481	GLU	4.7
1	A	149	LEU	4.6
1	B	262	LEU	4.5
1	A	262	LEU	4.5
1	B	149	LEU	4.5
1	B	225	GLU	4.4
1	A	451	ASP	4.4
1	A	468	THR	4.3
1	B	450	MET	4.3
1	A	476	ILE	4.3

*Continued on next page...*

*Continued from previous page...*

<b>Mol</b>	<b>Chain</b>	<b>Res</b>	<b>Type</b>	<b>RSRZ</b>
1	A	120	LYS	4.2
1	A	200	ASN	4.2
1	B	282	ILE	4.1
1	A	520	HIS	4.1
1	B	485	ASP	4.0
1	B	38	PRO	4.0
1	A	206	LEU	4.0
1	B	463	ILE	3.9
1	B	293	HIS	3.9
1	A	470	ILE	3.9
1	A	450	MET	3.9
1	A	177	LEU	3.8
1	B	425	ASP	3.8
1	A	505	VAL	3.8
1	A	226	ILE	3.8
1	A	203	VAL	3.7
1	A	437	ASP	3.7
1	B	117	LEU	3.6
1	A	494	ILE	3.6
1	B	106	ASP	3.6
1	A	196	HIS	3.6
1	A	215	PRO	3.6
1	B	481	GLU	3.6
1	B	68	GLY	3.6
1	A	472	ILE	3.6
1	A	227	GLU	3.5
1	A	155	ASP	3.5
1	A	484	VAL	3.5
1	A	118	SER	3.4
1	A	188	ASP	3.4
1	A	256	GLN	3.4
1	B	209	VAL	3.4
1	B	275	ASN	3.4
1	A	248	TRP	3.3
1	B	451	ASP	3.3
1	B	522	ILE	3.3
1	A	12	THR	3.3
1	B	245	GLN	3.3
1	A	202	MET	3.3
1	A	106	ASP	3.3
1	A	170	VAL	3.3
1	A	195	GLU	3.3

*Continued on next page...*

*Continued from previous page...*

Mol	Chain	Res	Type	RSRZ
1	B	203	VAL	3.2
1	B	484	VAL	3.2
1	B	518	VAL	3.2
1	B	227	GLU	3.2
1	B	248	TRP	3.1
1	B	342	TRP	3.1
1	A	218	THR	3.1
1	B	167	VAL	3.1
1	A	220	ARG	3.1
1	B	226	ILE	3.1
1	A	165	SER	3.1
1	A	173	ARG	3.1
1	B	375	TYR	3.1
1	A	475	LEU	3.1
1	B	30	LEU	3.1
1	A	219	THR	3.0
1	B	194	VAL	3.0
1	B	195	GLU	3.0
1	B	214	GLN	3.0
1	A	435	VAL	3.0
1	B	302	SER	3.0
1	A	385	VAL	3.0
1	B	40	ASP	3.0
1	A	482	LYS	3.0
1	B	482	LYS	3.0
1	A	137	VAL	2.9
1	B	435	VAL	2.9
1	A	246	GLY	2.9
1	B	337	THR	2.9
1	B	66	TYR	2.9
1	A	345	VAL	2.9
1	A	144	PRO	2.9
1	A	228	SER	2.8
1	B	464	GLY	2.8
1	A	122	ALA	2.8
1	A	342	TRP	2.8
1	B	146	ASP	2.8
1	B	407	GLY	2.8
1	A	490	VAL	2.8
1	B	229	ARG	2.8
1	A	22	THR	2.8
1	B	345	VAL	2.8

*Continued on next page...*

*Continued from previous page...*

Mol	Chain	Res	Type	RSRZ
1	B	234	SER	2.8
1	A	486	CYS	2.7
1	B	336	ASN	2.7
1	B	137	VAL	2.7
1	B	311	MET	2.7
1	B	362	ARG	2.7
1	A	353	ILE	2.7
1	A	179	TYR	2.7
1	B	23	ARG	2.6
1	B	34	SER	2.6
1	B	114	HIS	2.6
1	B	524	THR	2.6
1	B	503	GLY	2.6
1	B	505	VAL	2.6
1	A	121	GLU	2.6
1	A	40	ASP	2.6
1	B	335	GLN	2.6
1	B	11	ILE	2.6
1	B	462	GLY	2.6
1	B	249	GLU	2.6
1	A	395	ASP	2.6
1	A	224	ALA	2.6
1	A	249	GLU	2.6
1	A	194	VAL	2.6
1	A	231	ARG	2.6
1	B	488	ILE	2.6
1	B	211	GLN	2.6
1	A	272	GLU	2.6
1	B	102	LEU	2.6
1	B	490	VAL	2.6
1	B	196	HIS	2.6
1	A	23	ARG	2.5
1	A	193	LEU	2.5
1	A	354	VAL	2.5
1	A	18	ASN	2.5
1	B	107	PRO	2.5
1	B	201	PRO	2.5
1	B	477	ASP	2.5
1	B	148	VAL	2.5
1	B	193	LEU	2.5
1	A	422	THR	2.5
1	B	218	THR	2.5

*Continued on next page...*

*Continued from previous page...*

Mol	Chain	Res	Type	RSRZ
1	B	13	GLY	2.5
1	B	233	LEU	2.5
1	A	153	THR	2.5
1	B	127	THR	2.5
1	A	125	LEU	2.5
1	A	521	TYR	2.5
1	A	171	MET	2.4
1	A	511	TYR	2.4
1	B	179	TYR	2.4
1	B	283	LEU	2.4
1	A	456	VAL	2.4
1	B	199	LYS	2.4
1	A	212	LEU	2.4
1	A	139	GLU	2.4
1	B	221	ILE	2.4
1	B	171	MET	2.4
1	B	176	GLU	2.4
1	B	9	PRO	2.4
1	A	283	LEU	2.4
1	A	132	HIS	2.4
1	B	144	PRO	2.4
1	A	209	VAL	2.4
1	B	459	CYS	2.4
1	A	207	GLY	2.4
1	A	394	HIS	2.4
1	A	145	GLY	2.3
1	A	467	GLY	2.3
1	B	472	ILE	2.3
1	A	375	TYR	2.3
1	A	176	GLU	2.3
1	A	217	ASN	2.3
1	B	47	ARG	2.3
1	A	59	THR	2.3
1	B	468	THR	2.3
1	A	382	VAL	2.3
1	B	22	THR	2.3
1	B	403	LEU	2.3
1	A	167	VAL	2.3
1	B	476	ILE	2.3
1	B	461	ALA	2.3
1	A	466	THR	2.3
1	B	82	MET	2.3

*Continued on next page...*

*Continued from previous page...*

Mol	Chain	Res	Type	RSRZ
1	A	310	ILE	2.3
1	B	12	THR	2.2
1	B	98	LEU	2.2
1	B	370	TYR	2.2
1	B	373	ASP	2.2
1	B	360	VAL	2.2
1	B	182	GLY	2.2
1	A	364	LYS	2.2
1	B	172	ILE	2.2
1	A	84	HIS	2.2
1	A	444	HIS	2.2
1	B	200	ASN	2.2
1	B	385	VAL	2.2
1	B	113	PHE	2.2
1	B	188	ASP	2.2
1	A	175	GLN	2.2
1	A	273	ASN	2.2
1	A	291	VAL	2.2
1	A	293	HIS	2.2
1	B	52	THR	2.2
1	B	231	ARG	2.2
1	A	483	GLY	2.2
1	A	426	HIS	2.1
1	B	208	THR	2.1
1	B	466	THR	2.1
1	B	256	GLN	2.1
1	B	511	TYR	2.1
1	B	437	ASP	2.1
1	A	417	GLN	2.1
1	A	463	ILE	2.1
1	A	336	ASN	2.1
1	A	439	LEU	2.1
1	B	18	ASN	2.1
1	B	232	GLU	2.1
1	B	81	TYR	2.1
1	A	488	ILE	2.1
1	B	494	ILE	2.1
1	B	129	LYS	2.1
1	A	282	ILE	2.1
1	A	214	GLN	2.1
1	A	512	ARG	2.1
1	B	480	ARG	2.1

*Continued on next page...*

*Continued from previous page...*

Mol	Chain	Res	Type	RSRZ
1	A	464	GLY	2.1
1	A	305	ILE	2.1
1	B	353	ILE	2.1
1	B	355	MET	2.1
1	B	151	VAL	2.1
1	A	136	LEU	2.0
1	B	475	LEU	2.0
1	A	169	HIS	2.0
1	A	189	SER	2.0
1	B	170	VAL	2.0
1	B	389	LYS	2.0
1	A	10	ASN	2.0
1	A	21	LEU	2.0
1	A	30	LEU	2.0
1	A	43	LEU	2.0
1	B	408	GLN	2.0
1	B	224	ALA	2.0

## 6.2 Non-standard residues in protein, DNA, RNA chains [i](#)

There are no non-standard protein/DNA/RNA residues in this entry.

## 6.3 Carbohydrates [i](#)

There are no carbohydrates in this entry.

## 6.4 Ligands [i](#)

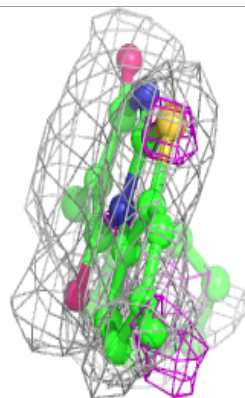
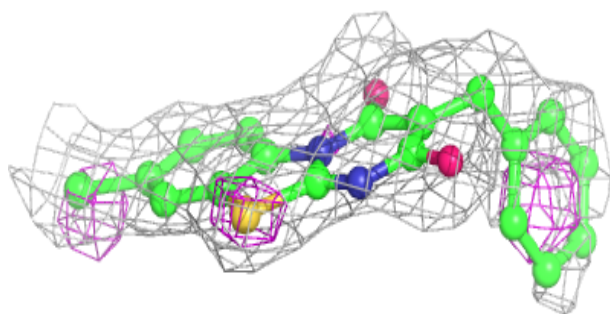
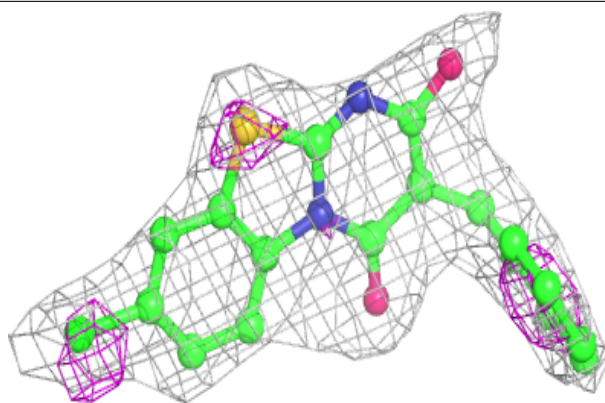
In the following table, the Atoms column lists the number of modelled atoms in the group and the number defined in the chemical component dictionary. The B-factors column lists the minimum, median, 95<sup>th</sup> percentile and maximum values of B factors of atoms in the group. The column labelled 'Q< 0.9' lists the number of atoms with occupancy less than 0.9.

Mol	Type	Chain	Res	Atoms	RSCC	RSR	B-factors( $\text{\AA}^2$ )	Q<0.9
2	DZJ	A	601	23/23	0.81	0.25	47,50,54,60	0
2	DZJ	B	601	23/23	0.82	0.20	41,43,46,51	0

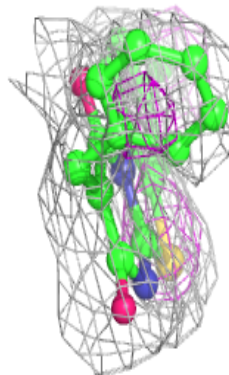
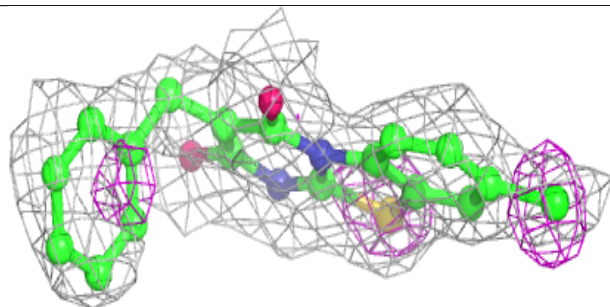
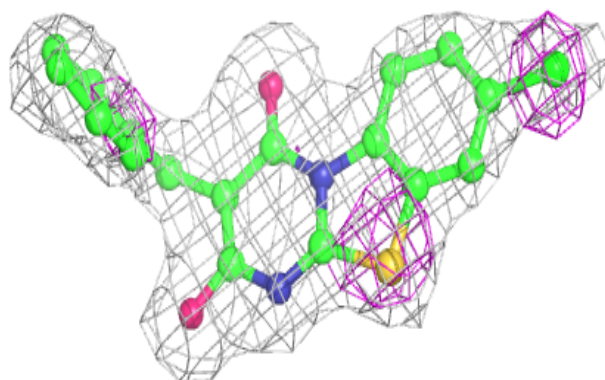
The following is a graphical depiction of the model fit to experimental electron density of all instances of the Ligand of Interest. In addition, ligands with molecular weight > 250 and outliers as shown on the geometry validation Tables will also be included. Each fit is shown from different orientation to approximate a three-dimensional view.

**Electron density around DZJ A 601:**

$2mF_o-DF_c$  (at 0.7 rmsd) in gray  
 $mF_o-DF_c$  (at 3 rmsd) in purple (negative)  
and green (positive)

**Electron density around DZJ B 601:**

$2mF_o-DF_c$  (at 0.7 rmsd) in gray  
 $mF_o-DF_c$  (at 3 rmsd) in purple (negative)  
and green (positive)



## 6.5 Other polymers [i](#)

There are no such residues in this entry.