



# Full wwPDB X-ray Structure Validation Report ⓘ

May 21, 2020 – 02:57 am BST

PDB ID : 3BOF  
Title : Cobalamin-dependent methionine synthase (1-566) from *Thermotoga maritima* complexed with Zn<sup>2+</sup> and Homocysteine  
Authors : Koutmos, M.; Smith, J.L.; Ludwig, M.L.  
Deposited on : 2007-12-17  
Resolution : 1.70 Å(reported)

This is a Full wwPDB X-ray Structure Validation Report for a publicly released PDB entry.

We welcome your comments at [validation@mail.wwpdb.org](mailto:validation@mail.wwpdb.org)

A user guide is available at

<https://www.wwpdb.org/validation/2017/XrayValidationReportHelp>

with specific help available everywhere you see the ⓘ symbol.

---

The following versions of software and data (see [references ⓘ](#)) were used in the production of this report:

MolProbity : 4.02b-467  
Mogul : 1.8.5 (274361), CSD as541be (2020)  
Xtriage (Phenix) : 1.13  
EDS : 2.11  
Percentile statistics : 20191225.v01 (using entries in the PDB archive December 25th 2019)  
Refmac : 5.8.0158  
CCP4 : 7.0.044 (Gargrove)  
Ideal geometry (proteins) : Engh & Huber (2001)  
Ideal geometry (DNA, RNA) : Parkinson et al. (1996)  
Validation Pipeline (wwPDB-VP) : 2.11

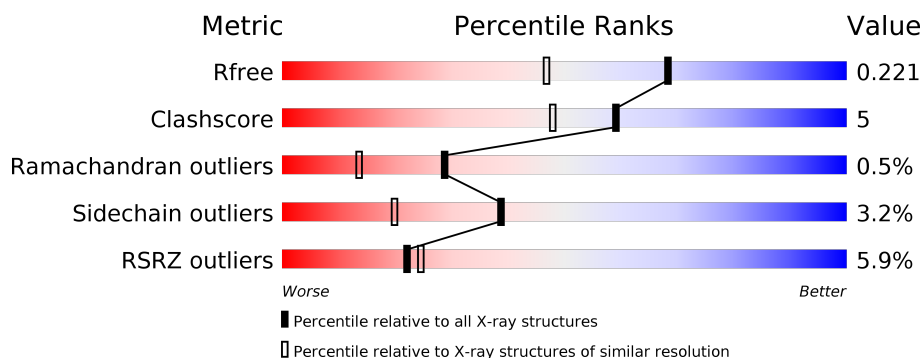
# 1 Overall quality at a glance

The following experimental techniques were used to determine the structure:

## *X-RAY DIFFRACTION*

The reported resolution of this entry is 1.70 Å.

Percentile scores (ranging between 0-100) for global validation metrics of the entry are shown in the following graphic. The table shows the number of entries on which the scores are based.



Metric	Whole archive (#Entries)	Similar resolution (#Entries, resolution range(Å))
$R_{free}$	130704	4298 (1.70-1.70)
Clashscore	141614	4695 (1.70-1.70)
Ramachandran outliers	138981	4610 (1.70-1.70)
Sidechain outliers	138945	4610 (1.70-1.70)
RSRZ outliers	127900	4222 (1.70-1.70)

The table below summarises the geometric issues observed across the polymeric chains and their fit to the electron density. The red, orange, yellow and green segments on the lower bar indicate the fraction of residues that contain outliers for  $\geq 3$ , 2, 1 and 0 types of geometric quality criteria respectively. A grey segment represents the fraction of residues that are not modelled. The numeric value for each fraction is indicated below the corresponding segment, with a dot representing fractions  $\leq 5\%$ . The upper red bar (where present) indicates the fraction of residues that have poor fit to the electron density. The numeric value is given above the bar.

Mol	Chain	Length	Quality of chain
1	A	566	<div> <div>4%</div> <div> <div></div> <div>88%</div> <div>9%</div> <div>..</div> </div> </div>
1	B	566	<div> <div>8%</div> <div> <div></div> <div>86%</div> <div>11%</div> <div>..</div> </div> </div>

## 2 Entry composition [i](#)

There are 6 unique types of molecules in this entry. The entry contains 9195 atoms, of which 0 are hydrogens and 0 are deuteriums.

In the tables below, the ZeroOcc column contains the number of atoms modelled with zero occupancy, the AltConf column contains the number of residues with at least one atom in alternate conformation and the Trace column contains the number of residues modelled with at most 2 atoms.

- Molecule 1 is a protein called 5-methyltetrahydrofolate S-homocysteine methyltransferase.

Mol	Chain	Residues	Atoms					ZeroOcc	AltConf	Trace
1	A	560	Total	C	N	O	S	0	0	0
			4402	2826	734	829	13			
1	B	556	Total	C	N	O	S	0	0	0
			4361	2800	727	821	13			

- Molecule 2 is ZINC ION (three-letter code: ZN) (formula: Zn).

Mol	Chain	Residues	Atoms		ZeroOcc	AltConf
2	B	1	Total	Zn	0	0
			1	1		
2	A	1	Total	Zn	0	0
			1	1		

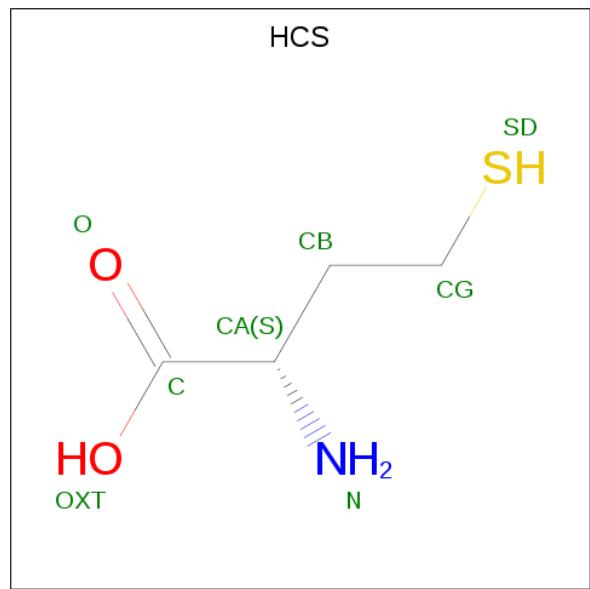
- Molecule 3 is POTASSIUM ION (three-letter code: K) (formula: K).

Mol	Chain	Residues	Atoms		ZeroOcc	AltConf
3	B	1	Total	K	0	0
			1	1		
3	A	1	Total	K	0	0
			1	1		

- Molecule 4 is YTTRIUM (III) ION (three-letter code: YT3) (formula: Y).

Mol	Chain	Residues	Atoms		ZeroOcc	AltConf
4	A	1	Total	Y	0	0
			1	1		

- Molecule 5 is 2-AMINO-4-MERCAPTO-BUTYRIC ACID (three-letter code: HCS) (formula: C<sub>4</sub>H<sub>9</sub>NO<sub>2</sub>S).



Mol	Chain	Residues	Atoms					ZeroOcc	AltConf
5	A	1	Total	C	N	O	S	0	0
			8	4	1	2	1		
5	B	1	Total	C	N	O	S	0	0
			8	4	1	2	1		

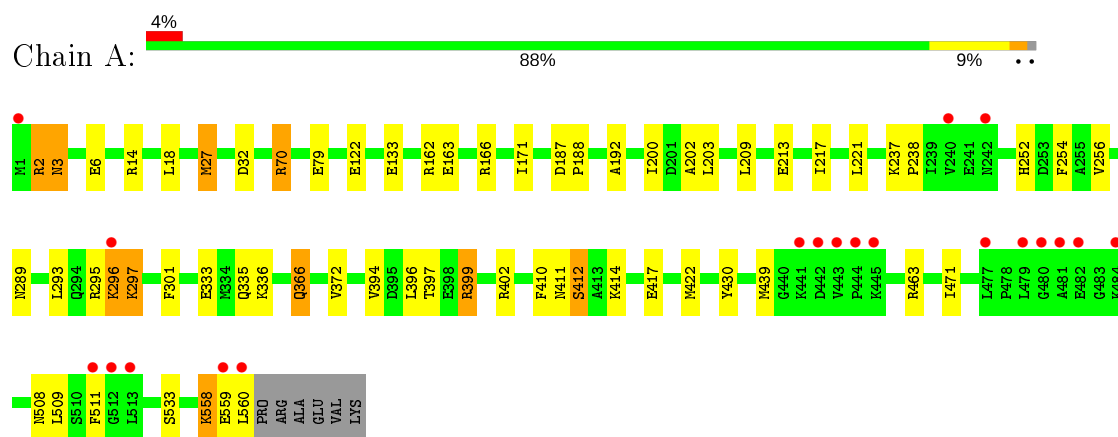
- Molecule 6 is water.

Mol	Chain	Residues	Atoms		ZeroOcc	AltConf
6	A	261	Total	O	0	0
			261	261		
6	B	150	Total	O	0	0
			150	150		

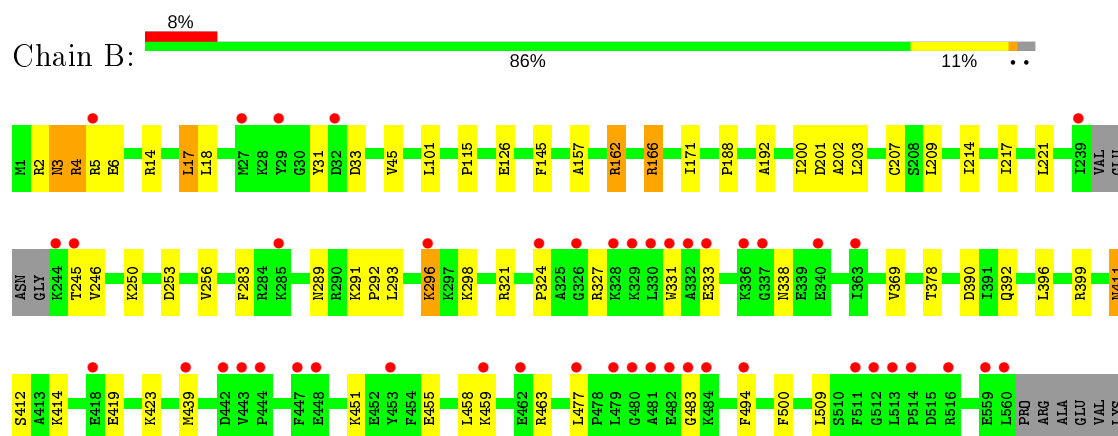
### 3 Residue-property plots [i](#)

These plots are drawn for all protein, RNA and DNA chains in the entry. The first graphic for a chain summarises the proportions of the various outlier classes displayed in the second graphic. The second graphic shows the sequence view annotated by issues in geometry and electron density. Residues are color-coded according to the number of geometric quality criteria for which they contain at least one outlier: green = 0, yellow = 1, orange = 2 and red = 3 or more. A red dot above a residue indicates a poor fit to the electron density ( $RSRZ > 2$ ). Stretches of 2 or more consecutive residues without any outlier are shown as a green connector. Residues present in the sample, but not in the model, are shown in grey.

- Molecule 1: 5-methyltetrahydrofolate S-homocysteine methyltransferase



- Molecule 1: 5-methyltetrahydrofolate S-homocysteine methyltransferase



## 4 Data and refinement statistics

Property	Value	Source
Space group	P 1 21 1	Depositor
Cell constants a, b, c, $\alpha$ , $\beta$ , $\gamma$	59.07Å 86.31Å 125.88Å 90.00° 100.03° 90.00°	Depositor
Resolution (Å)	46.68 – 1.70 46.66 – 1.70	Depositor EDS
% Data completeness (in resolution range)	99.9 (46.68-1.70) 99.9 (46.66-1.70)	Depositor EDS
$R_{merge}$	0.06	Depositor
$R_{sym}$	0.05	Depositor
$\langle I/\sigma(I) \rangle$ <sup>1</sup>	4.53 (at 1.70Å)	Xtriage
Refinement program	REFMAC 5.2.0019, CNS 1.2 / REFMAC 5.2.0019	Depositor
R, $R_{free}$	0.195 , 0.222 0.194 , 0.221	Depositor DCC
$R_{free}$ test set	6933 reflections (5.08%)	wwPDB-VP
Wilson B-factor (Å <sup>2</sup> )	20.3	Xtriage
Anisotropy	0.098	Xtriage
Bulk solvent $k_{sol}$ (e/Å <sup>3</sup> ), $B_{sol}$ (Å <sup>2</sup> )	0.39 , 51.9	EDS
L-test for twinning <sup>2</sup>	$\langle  L  \rangle = 0.49$ , $\langle L^2 \rangle = 0.32$	Xtriage
Estimated twinning fraction	No twinning to report.	Xtriage
$F_o, F_c$ correlation	0.96	EDS
Total number of atoms	9195	wwPDB-VP
Average B, all atoms (Å <sup>2</sup> )	26.0	wwPDB-VP

Xtriage's analysis on translational NCS is as follows: *The largest off-origin peak in the Patterson function is 4.09% of the height of the origin peak. No significant pseudotranslation is detected.*

<sup>1</sup>Intensities estimated from amplitudes.

<sup>2</sup>Theoretical values of  $\langle |L| \rangle$ ,  $\langle L^2 \rangle$  for acentric reflections are 0.5, 0.333 respectively for untwinned datasets, and 0.375, 0.2 for perfectly twinned datasets.

## 5 Model quality [i](#)

### 5.1 Standard geometry [i](#)

Bond lengths and bond angles in the following residue types are not validated in this section: HCS, ZN, K, YT3

The Z score for a bond length (or angle) is the number of standard deviations the observed value is removed from the expected value. A bond length (or angle) with  $|Z| > 5$  is considered an outlier worth inspection. RMSZ is the root-mean-square of all Z scores of the bond lengths (or angles).

Mol	Chain	Bond lengths		Bond angles	
		RMSZ	$\# Z  > 5$	RMSZ	$\# Z  > 5$
1	A	0.67	1/4484 (0.0%)	0.75	3/6060 (0.0%)
1	B	0.53	0/4442	0.67	1/6004 (0.0%)
All	All	0.61	1/8926 (0.0%)	0.71	4/12064 (0.0%)

Chiral center outliers are detected by calculating the chiral volume of a chiral center and verifying if the center is modelled as a planar moiety or with the opposite hand. A planarity outlier is detected by checking planarity of atoms in a peptide group, atoms in a mainchain group or atoms of a sidechain that are expected to be planar.

Mol	Chain	#Chirality outliers	#Planarity outliers
1	A	0	3
1	B	0	1
All	All	0	4

All (1) bond length outliers are listed below:

Mol	Chain	Res	Type	Atoms	Z	Observed(Å)	Ideal(Å)
1	A	133	GLU	CB-CG	-6.71	1.39	1.52

All (4) bond angle outliers are listed below:

Mol	Chain	Res	Type	Atoms	Z	Observed(°)	Ideal(°)
1	B	4	ARG	NE-CZ-NH1	-6.61	116.99	120.30
1	A	412	SER	N-CA-CB	5.38	118.57	110.50
1	A	187	ASP	CB-CG-OD2	5.26	123.03	118.30
1	A	70	ARG	NE-CZ-NH2	-5.10	117.75	120.30

There are no chirality outliers.

All (4) planarity outliers are listed below:

Mol	Chain	Res	Type	Group
1	A	411	ASN	Mainchain,Peptide
1	A	558	LYS	Peptide
1	B	411	ASN	Peptide

## 5.2 Too-close contacts

In the following table, the Non-H and H(model) columns list the number of non-hydrogen atoms and hydrogen atoms in the chain respectively. The H(added) column lists the number of hydrogen atoms added and optimized by MolProbity. The Clashes column lists the number of clashes within the asymmetric unit, whereas Symm-Clashes lists symmetry related clashes.

Mol	Chain	Non-H	H(model)	H(added)	Clashes	Symm-Clashes
1	A	4402	0	4463	46	0
1	B	4361	0	4402	37	0
2	A	1	0	0	0	0
2	B	1	0	0	0	0
3	A	1	0	0	0	0
3	B	1	0	0	0	0
4	A	1	0	0	0	0
5	A	8	0	7	0	0
5	B	8	0	7	0	0
6	A	261	0	0	4	0
6	B	150	0	0	1	0
All	All	9195	0	8879	83	0

The all-atom clashscore is defined as the number of clashes found per 1000 atoms (including hydrogen atoms). The all-atom clashscore for this structure is 5.

All (83) close contacts within the same asymmetric unit are listed below, sorted by their clash magnitude.

Atom-1	Atom-2	Interatomic distance (Å)	Clash overlap (Å)
1:A:372:VAL:HG11	1:A:396:LEU:HD21	1.51	0.90
1:A:200:ILE:CD1	1:A:203:LEU:HD21	2.02	0.90
1:A:14:ARG:NH1	1:A:289:ASN:OD1	2.06	0.89
1:B:200:ILE:HD11	1:B:203:LEU:HD21	1.53	0.88
1:B:200:ILE:CD1	1:B:203:LEU:HD21	2.09	0.82
1:A:200:ILE:HD11	1:A:203:LEU:HD21	1.62	0.81
1:A:296:LYS:O	1:A:297:LYS:HB3	1.83	0.77
1:A:402:ARG:HG2	1:A:430:TYR:CE1	2.23	0.74
1:A:200:ILE:CD1	1:A:203:LEU:CD2	2.69	0.69
1:B:3:ASN:HD22	1:B:3:ASN:C	1.96	0.68

*Continued on next page...*



*Continued from previous page...*

Atom-1	Atom-2	Interatomic distance (Å)	Clash overlap (Å)
1:A:3:ASN:HD22	1:A:3:ASN:C	1.97	0.68
1:A:237:LYS:HG2	1:A:238:PRO:HD2	1.75	0.67
1:A:335:GLN:NE2	1:A:366:GLN:HG2	2.10	0.67
1:A:301:PHE:CZ	1:A:471:ILE:HG13	2.30	0.66
1:A:372:VAL:HG11	1:A:396:LEU:CD2	2.25	0.65
1:A:27:MET:HB2	6:A:1002:HOH:O	1.95	0.65
1:A:508:ASN:HA	1:A:511:PHE:CD2	2.32	0.65
1:B:291:LYS:HG2	1:B:292:PRO:HD2	1.80	0.63
1:A:252:HIS:O	1:A:256:VAL:HG13	1.98	0.63
1:B:369:VAL:HG11	1:B:399:ARG:HD2	1.80	0.63
1:A:200:ILE:HD12	1:A:203:LEU:CD2	2.29	0.63
1:B:390:ASP:HA	1:B:411:ASN:HB3	1.81	0.62
1:A:70:ARG:HD2	1:A:79:GLU:OE2	2.01	0.61
1:A:397:THR:HG23	1:A:410:PHE:CE1	2.36	0.60
1:A:414:LYS:NZ	1:A:439:MET:SD	2.75	0.60
1:B:200:ILE:CD1	1:B:203:LEU:CD2	2.77	0.60
1:B:3:ASN:ND2	1:B:6:GLU:H	2.00	0.58
1:A:213:GLU:HG2	1:A:237:LYS:NZ	2.20	0.57
1:A:200:ILE:HD12	1:A:203:LEU:HD23	1.85	0.57
1:B:4:ARG:HD3	1:B:201:ASP:OD2	2.05	0.57
1:A:188:PRO:HG3	1:A:217:ILE:HG23	1.86	0.57
1:A:122:GLU:HG2	6:A:824:HOH:O	2.05	0.56
1:A:296:LYS:HG3	1:A:297:LYS:H	1.71	0.55
1:A:192:ALA:HB2	1:A:221:LEU:HD12	1.88	0.54
1:B:2:ARG:HD3	1:B:101:LEU:CD2	2.37	0.54
1:B:200:ILE:HD12	1:B:203:LEU:CD2	2.38	0.54
1:B:192:ALA:HB2	1:B:221:LEU:HD12	1.90	0.54
1:B:369:VAL:HG11	1:B:399:ARG:CD	2.37	0.54
1:B:333:GLU:HB3	1:B:338:ASN:HB3	1.89	0.53
1:B:171:ILE:HG12	1:B:202:ALA:HB3	1.90	0.53
1:B:477:LEU:HB2	1:B:483:GLY:HA2	1.89	0.53
1:A:122:GLU:HG2	6:A:742:HOH:O	2.11	0.51
1:B:458:LEU:HD21	1:B:500:PHE:CZ	2.47	0.50
1:A:335:GLN:HE21	1:A:366:GLN:HG2	1.75	0.50
1:A:335:GLN:HE21	1:A:366:GLN:CG	2.24	0.49
1:A:171:ILE:HG12	1:A:202:ALA:HB3	1.94	0.49
1:B:188:PRO:HG3	1:B:217:ILE:HG23	1.95	0.49
1:A:188:PRO:CG	1:A:217:ILE:HG23	2.43	0.48
1:B:200:ILE:HD12	1:B:203:LEU:HD23	1.94	0.48
1:B:321:ARG:O	1:B:327:ARG:NH1	2.47	0.48
1:A:333:GLU:HA	1:A:336:LYS:HG2	1.96	0.47

*Continued on next page...*

*Continued from previous page...*

Atom-1	Atom-2	Interatomic distance (Å)	Clash overlap (Å)
1:B:419:GLU:O	1:B:423:LYS:HG2	2.15	0.47
1:A:559:GLU:HB3	1:A:560:LEU:H	1.48	0.47
1:A:2:ARG:HG3	1:A:6:GLU:OE2	2.15	0.47
1:B:3:ASN:C	1:B:3:ASN:ND2	2.68	0.47
1:A:533:SER:HB2	6:A:919:HOH:O	2.15	0.47
1:A:335:GLN:NE2	1:A:366:GLN:CG	2.78	0.46
1:A:27:MET:CE	1:A:32:ASP:HB3	2.45	0.46
1:B:115:PRO:HG3	1:B:378:THR:HG23	1.96	0.46
1:A:335:GLN:NE2	1:A:366:GLN:HE21	2.14	0.46
1:A:399:ARG:HA	1:A:399:ARG:HD2	1.77	0.46
1:B:414:LYS:HD3	1:B:439:MET:HG3	1.98	0.45
1:B:188:PRO:CG	1:B:217:ILE:HG23	2.46	0.45
1:B:162:ARG:HD2	1:B:166:ARG:HA	1.98	0.45
1:A:417:GLU:OE2	1:A:463:ARG:NH1	2.51	0.44
1:B:17:LEU:HD11	1:B:283:PHE:HB3	2.00	0.43
1:A:162:ARG:HA	1:A:162:ARG:HD3	1.72	0.43
1:B:209:LEU:HB2	1:B:214:ILE:HG13	2.01	0.42
1:A:558:LYS:HD3	1:A:559:GLU:HG3	2.01	0.42
1:B:451:LYS:HG3	1:B:494:PHE:CE2	2.54	0.42
1:B:4:ARG:CD	1:B:201:ASP:OD2	2.68	0.42
1:B:31:TYR:CZ	1:B:45:VAL:HG21	2.54	0.42
1:A:396:LEU:O	1:A:396:LEU:HD23	2.20	0.42
1:A:209:LEU:HB3	1:A:213:GLU:HB2	2.02	0.42
1:B:296:LYS:O	1:B:296:LYS:HG3	2.19	0.42
1:A:394:VAL:HG11	1:A:422:MET:HG2	2.01	0.41
1:B:253:ASP:O	1:B:256:VAL:HG22	2.20	0.41
1:B:324:PRO:HB2	1:B:331:TRP:HB2	2.03	0.41
1:B:392:GLN:NE2	6:B:1101:HOH:O	2.52	0.41
1:A:301:PHE:CZ	1:A:471:ILE:CG1	3.03	0.41
1:A:399:ARG:N	1:A:399:ARG:HD2	2.34	0.41
1:B:14:ARG:NH2	1:B:289:ASN:OD1	2.54	0.41
1:B:145:PHE:CE2	1:B:157:ALA:HB1	2.57	0.40

There are no symmetry-related clashes.

## 5.3 Torsion angles ⓘ

### 5.3.1 Protein backbone ⓘ

In the following table, the Percentiles column shows the percent Ramachandran outliers of the chain as a percentile score with respect to all X-ray entries followed by that with respect to entries

of similar resolution.

The Analysed column shows the number of residues for which the backbone conformation was analysed, and the total number of residues.

Mol	Chain	Analysed	Favoured	Allowed	Outliers	Percentiles	
1	A	558/566 (99%)	537 (96%)	19 (3%)	2 (0%)	34	18
1	B	552/566 (98%)	537 (97%)	12 (2%)	3 (0%)	29	13
All	All	1110/1132 (98%)	1074 (97%)	31 (3%)	5 (0%)	29	13

All (5) Ramachandran outliers are listed below:

Mol	Chain	Res	Type
1	A	297	LYS
1	A	412	SER
1	B	246	VAL
1	B	245	THR
1	B	412	SER

### 5.3.2 Protein sidechains ⓘ

In the following table, the Percentiles column shows the percent sidechain outliers of the chain as a percentile score with respect to all X-ray entries followed by that with respect to entries of similar resolution.

The Analysed column shows the number of residues for which the sidechain conformation was analysed, and the total number of residues.

Mol	Chain	Analysed	Rotameric	Outliers	Percentiles	
1	A	482/494 (98%)	469 (97%)	13 (3%)	44	26
1	B	475/494 (96%)	457 (96%)	18 (4%)	33	14
All	All	957/988 (97%)	926 (97%)	31 (3%)	39	20

All (31) residues with a non-rotameric sidechain are listed below:

Mol	Chain	Res	Type
1	A	2	ARG
1	A	3	ASN
1	A	18	LEU
1	A	27	MET
1	A	163	GLU
1	A	166	ARG
1	A	254	PHE

*Continued on next page...*

*Continued from previous page...*

Mol	Chain	Res	Type
1	A	293	LEU
1	A	295	ARG
1	A	296	LYS
1	A	366	GLN
1	A	399	ARG
1	A	509	LEU
1	B	3	ASN
1	B	5	ARG
1	B	17	LEU
1	B	18	LEU
1	B	33	ASP
1	B	126	GLU
1	B	162	ARG
1	B	166	ARG
1	B	207	CYS
1	B	250	LYS
1	B	293	LEU
1	B	296	LYS
1	B	298	LYS
1	B	396	LEU
1	B	455	GLU
1	B	459	LYS
1	B	463	ARG
1	B	509	LEU

Some sidechains can be flipped to improve hydrogen bonding and reduce clashes. All (6) such sidechains are listed below:

Mol	Chain	Res	Type
1	A	3	ASN
1	A	335	GLN
1	B	3	ASN
1	B	335	GLN
1	B	366	GLN
1	B	549	ASN

### 5.3.3 RNA ⓘ

There are no RNA molecules in this entry.

## 5.4 Non-standard residues in protein, DNA, RNA chains ⓘ

There are no non-standard protein/DNA/RNA residues in this entry.

## 5.5 Carbohydrates ⓘ

There are no carbohydrates in this entry.

## 5.6 Ligand geometry ⓘ

Of 7 ligands modelled in this entry, 5 are monoatomic - leaving 2 for Mogul analysis.

In the following table, the Counts columns list the number of bonds (or angles) for which Mogul statistics could be retrieved, the number of bonds (or angles) that are observed in the model and the number of bonds (or angles) that are defined in the Chemical Component Dictionary. The Link column lists molecule types, if any, to which the group is linked. The Z score for a bond length (or angle) is the number of standard deviations the observed value is removed from the expected value. A bond length (or angle) with  $|Z| > 2$  is considered an outlier worth inspection. RMSZ is the root-mean-square of all Z scores of the bond lengths (or angles).

Mol	Type	Chain	Res	Link	Bond lengths			Bond angles		
					Counts	RMSZ	$\# Z  > 2$	Counts	RMSZ	$\# Z  > 2$
5	HCS	A	711	2	3,7,7	1.79	1 (33%)	2,8,8	2.96	1 (50%)
5	HCS	B	712	2	3,7,7	0.38	0	2,8,8	2.86	1 (50%)

In the following table, the Chirals column lists the number of chiral outliers, the number of chiral centers analysed, the number of these observed in the model and the number defined in the Chemical Component Dictionary. Similar counts are reported in the Torsion and Rings columns. '-' means no outliers of that kind were identified.

Mol	Type	Chain	Res	Link	Chirals	Torsions	Rings
5	HCS	A	711	2	-	0/3/7/7	-
5	HCS	B	712	2	-	0/3/7/7	-

All (1) bond length outliers are listed below:

Mol	Chain	Res	Type	Atoms	Z	Observed(Å)	Ideal(Å)
5	A	711	HCS	CB-CG	3.01	1.56	1.52

All (2) bond angle outliers are listed below:

Mol	Chain	Res	Type	Atoms	Z	Observed(°)	Ideal(°)
5	A	711	HCS	CB-CG-SD	-3.91	109.67	113.74

*Continued on next page...*

*Continued from previous page...*

Mol	Chain	Res	Type	Atoms	Z	Observed(°)	Ideal(°)
5	B	712	HCS	CB-CG-SD	-3.65	109.94	113.74

There are no chirality outliers.

There are no torsion outliers.

There are no ring outliers.

No monomer is involved in short contacts.

## 5.7 Other polymers [i](#)

There are no such residues in this entry.

## 5.8 Polymer linkage issues [i](#)

There are no chain breaks in this entry.

## 6 Fit of model and data ⓘ

### 6.1 Protein, DNA and RNA chains ⓘ

In the following table, the column labelled ‘#RSRZ> 2’ contains the number (and percentage) of RSRZ outliers, followed by percent RSRZ outliers for the chain as percentile scores relative to all X-ray entries and entries of similar resolution. The OWAB column contains the minimum, median, 95<sup>th</sup> percentile and maximum values of the occupancy-weighted average B-factor per residue. The column labelled ‘Q< 0.9’ lists the number of (and percentage) of residues with an average occupancy less than 0.9.

Mol	Chain	Analysed	<RSRZ>	#RSRZ>2		OWAB(Å <sup>2</sup> )	Q<0.9
1	A	560/566 (98%)	0.03	20 (3%)	42 47	11, 20, 38, 56	0
1	B	556/566 (98%)	0.33	46 (8%)	11 13	14, 28, 53, 60	0
All	All	1116/1132 (98%)	0.18	66 (5%)	22 24	11, 24, 48, 60	0

All (66) RSRZ outliers are listed below:

Mol	Chain	Res	Type	RSRZ
1	A	511	PHE	7.1
1	B	511	PHE	6.0
1	A	512	GLY	5.9
1	B	244	LYS	5.2
1	B	363	ILE	5.0
1	B	480	GLY	4.9
1	A	482	GLU	4.8
1	B	560	LEU	4.7
1	B	483	GLY	4.3
1	B	513	LEU	4.2
1	B	29	TYR	4.1
1	B	330	LEU	4.0
1	B	331	TRP	3.9
1	A	441	LYS	3.9
1	A	560	LEU	3.9
1	B	482	GLU	3.8
1	A	480	GLY	3.8
1	B	453	TYR	3.8
1	A	481	ALA	3.6
1	B	443	VAL	3.5
1	A	559	GLU	3.5
1	B	239	ILE	3.4
1	A	443	VAL	3.3
1	B	448	GLU	3.3

*Continued on next page...*

*Continued from previous page...*

Mol	Chain	Res	Type	RSRZ
1	B	481	ALA	3.2
1	B	559	GLU	3.2
1	A	242	ASN	3.2
1	B	484	LYS	3.1
1	B	514	PRO	3.1
1	B	245	THR	3.1
1	A	240	VAL	3.1
1	B	439	MET	3.0
1	A	442	ASP	3.0
1	B	479	LEU	3.0
1	B	336	LYS	3.0
1	B	340	GLU	3.0
1	B	418	GLU	2.9
1	B	326	GLY	2.9
1	A	484	LYS	2.8
1	A	1	MET	2.8
1	B	296	LYS	2.8
1	B	477	LEU	2.8
1	A	445	LYS	2.7
1	B	332	ALA	2.7
1	B	329	LYS	2.7
1	B	442	ASP	2.6
1	B	459	LYS	2.6
1	B	324	PRO	2.6
1	B	333	GLU	2.6
1	B	512	GLY	2.6
1	B	444	PRO	2.5
1	B	462	GLU	2.5
1	A	296	LYS	2.5
1	B	494	PHE	2.5
1	A	513	LEU	2.4
1	B	27	MET	2.3
1	B	285	LYS	2.3
1	B	5	ARG	2.3
1	A	444	PRO	2.3
1	B	447	PHE	2.2
1	B	32	ASP	2.2
1	B	328	LYS	2.1
1	B	337	GLY	2.1
1	B	516	ARG	2.1
1	A	477	LEU	2.1
1	A	479	LEU	2.0



## 6.2 Non-standard residues in protein, DNA, RNA chains [i](#)

There are no non-standard protein/DNA/RNA residues in this entry.

## 6.3 Carbohydrates [i](#)

There are no carbohydrates in this entry.

## 6.4 Ligands [i](#)

In the following table, the Atoms column lists the number of modelled atoms in the group and the number defined in the chemical component dictionary. The B-factors column lists the minimum, median, 95<sup>th</sup> percentile and maximum values of B factors of atoms in the group. The column labelled 'Q< 0.9' lists the number of atoms with occupancy less than 0.9.

Mol	Type	Chain	Res	Atoms	RSCC	RSR	B-factors( $\text{\AA}^2$ )	Q<0.9
4	YT3	A	705	1/1	0.95	0.06	41,41,41,41	0
5	HCS	A	711	8/8	0.98	0.07	11,13,16,16	0
5	HCS	B	712	8/8	0.98	0.06	17,18,19,20	0
2	ZN	B	702	1/1	0.99	0.07	20,20,20,20	0
3	K	A	703	1/1	0.99	0.06	12,12,12,12	0
3	K	B	704	1/1	0.99	0.04	17,17,17,17	0
2	ZN	A	701	1/1	1.00	0.08	14,14,14,14	0

## 6.5 Other polymers [i](#)

There are no such residues in this entry.