



# Full wwPDB X-ray Structure Validation Report ⓘ

May 24, 2020 – 02:54 am BST

PDB ID : 6BOI  
Title : Crystal Structure of LdtMt2 (56-408) with a panipenem adduct at the active site cysteine-354  
Authors : Saavedra, H.; Bianchet, M.A.  
Deposited on : 2017-11-20  
Resolution : 2.10 Å(reported)

This is a Full wwPDB X-ray Structure Validation Report for a publicly released PDB entry.

We welcome your comments at [validation@mail.wwpdb.org](mailto:validation@mail.wwpdb.org)

A user guide is available at

<https://www.wwpdb.org/validation/2017/XrayValidationReportHelp>

with specific help available everywhere you see the ⓘ symbol.

---

The following versions of software and data (see [references ⓘ](#)) were used in the production of this report:

MolProbity : 4.02b-467  
Mogul : 1.8.5 (274361), CSD as541be (2020)  
Xtriage (Phenix) : 1.13  
EDS : 2.11  
buster-report : 1.1.7 (2018)  
Percentile statistics : 20191225.v01 (using entries in the PDB archive December 25th 2019)  
Refmac : 5.8.0158  
CCP4 : 7.0.044 (Gargrove)  
Ideal geometry (proteins) : Engh & Huber (2001)  
Ideal geometry (DNA, RNA) : Parkinson et al. (1996)  
Validation Pipeline (wwPDB-VP) : 2.11

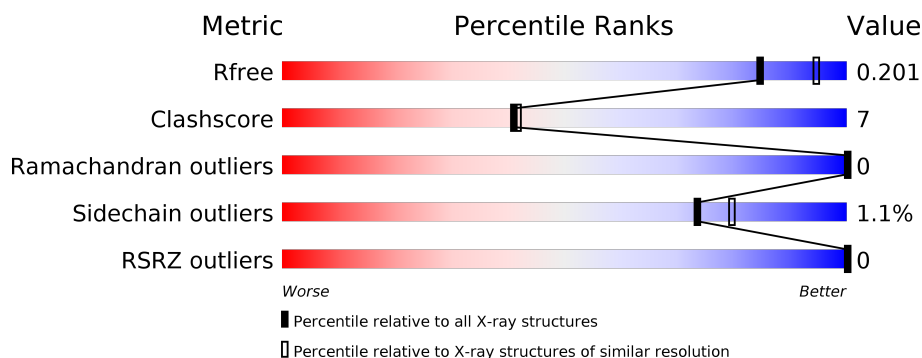
# 1 Overall quality at a glance

The following experimental techniques were used to determine the structure:

*X-RAY DIFFRACTION*

The reported resolution of this entry is 2.10 Å.

Percentile scores (ranging between 0-100) for global validation metrics of the entry are shown in the following graphic. The table shows the number of entries on which the scores are based.



Metric	Whole archive (#Entries)	Similar resolution (#Entries, resolution range(Å))
$R_{free}$	130704	5197 (2.10-2.10)
Clashscore	141614	5710 (2.10-2.10)
Ramachandran outliers	138981	5647 (2.10-2.10)
Sidechain outliers	138945	5648 (2.10-2.10)
RSRZ outliers	127900	5083 (2.10-2.10)

The table below summarises the geometric issues observed across the polymeric chains and their fit to the electron density. The red, orange, yellow and green segments on the lower bar indicate the fraction of residues that contain outliers for  $\geq 3$ , 2, 1 and 0 types of geometric quality criteria respectively. A grey segment represents the fraction of residues that are not modelled. The numeric value for each fraction is indicated below the corresponding segment, with a dot representing fractions  $\leq 5\%$ . The upper red bar (where present) indicates the fraction of residues that have poor fit to the electron density. The numeric value is given above the bar.

Mol	Chain	Length	Quality of chain
1	A	352	 91% 9% •
1	B	352	 85% 15%

The following table lists non-polymeric compounds, carbohydrate monomers and non-standard residues in protein, DNA, RNA chains that are outliers for geometric or electron-density-fit criteria:

Mol	Type	Chain	Res	Chirality	Geometry	Clashes	Electron density
2	E0Y	A	501	X	-	-	-
2	E0Y	B	501	X	-	-	-
3	PEG	B	502	-	-	X	-
5	SO4	A	508	-	-	-	X
5	SO4	A	510	-	-	X	-

## 2 Entry composition [i](#)

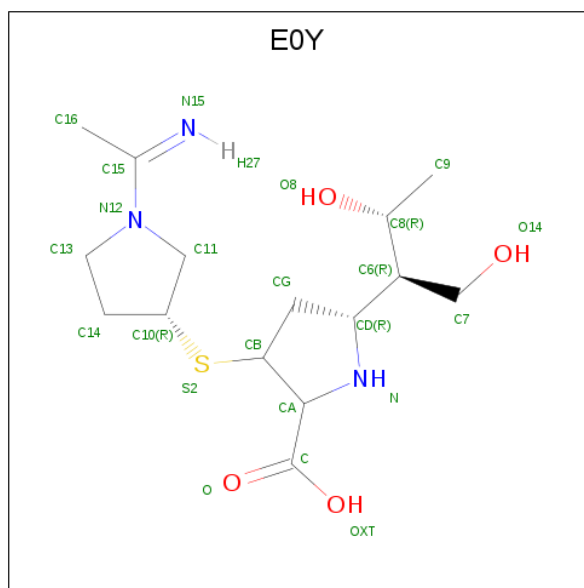
There are 6 unique types of molecules in this entry. The entry contains 6049 atoms, of which 86 are hydrogens and 0 are deuteriums.

In the tables below, the ZeroOcc column contains the number of atoms modelled with zero occupancy, the AltConf column contains the number of residues with at least one atom in alternate conformation and the Trace column contains the number of residues modelled with at most 2 atoms.

- Molecule 1 is a protein called Putative conserved lipoprotein LppS.

Mol	Chain	Residues	Atoms					ZeroOcc	AltConf	Trace
1	A	352	Total	C	N	O	S	0	1	0
			2666	1672	468	518	8			
1	B	352	Total	C	N	O	S	0	2	0
			2675	1677	469	521	8			

- Molecule 2 is (3S,5R)-5-[(2R,3R)-1,3-dihydroxybutan-2-yl]-3-({(3R)-1-[(1E)-ethanimidoyl]pyrrolidin-3-yl}sulfanyl)-L-proline (three-letter code: E0Y) (formula: C<sub>15</sub>H<sub>27</sub>N<sub>3</sub>O<sub>4</sub>S).



Mol	Chain	Residues	Atoms					ZeroOcc	AltConf
2	A	1	Total	C	N	O	S	0	0
			23	15	3	4	1		
2	B	1	Total	C	N	O	S	0	0
			23	15	3	4	1		

- Molecule 3 is DI(HYDROXYETHYL)ETHER (three-letter code: PEG) (formula: C<sub>4</sub>H<sub>10</sub>O<sub>3</sub>).



Mol	Chain	Residues	Atoms				ZeroOcc	AltConf
3	A	1	Total	C	H	O	0	0
			17	4	10	3		
3	B	1	Total	C	H	O	0	0
			17	4	10	3		
3	B	1	Total	C	H	O	0	0
			17	4	10	3		

- Molecule 4 is GLYCEROL (three-letter code: GOL) (formula:  $C_3H_8O_3$ ).



Mol	Chain	Residues	Atoms				ZeroOcc	AltConf
4	A	1	Total	C	H	O	0	0
			14	3	8	3		

*Continued on next page...*

Continued from previous page...

Mol	Chain	Residues	Atoms				ZeroOcc	AltConf
4	A	1	Total	C	H	O	0	0
			14	3	8	3		
4	A	1	Total	C	H	O	0	0
			14	3	8	3		
4	A	1	Total	C	H	O	0	0
			14	3	8	3		
4	A	1	Total	C	H	O	0	0
			14	3	8	3		
4	B	1	Total	C	H	O	0	0
			14	3	8	3		
4	B	1	Total	C	H	O	0	0
			14	3	8	3		

- Molecule 5 is SULFATE ION (three-letter code: SO4) (formula: O<sub>4</sub>S).



Mol	Chain	Residues	Atoms			ZeroOcc	AltConf
5	A	1	Total	O	S	0	0
			5	4	1		
5	A	1	Total	O	S	0	0
			5	4	1		
5	A	1	Total	O	S	0	0
			5	4	1		
5	A	1	Total	O	S	0	0
			5	4	1		
5	B	1	Total	O	S	0	0
			5	4	1		

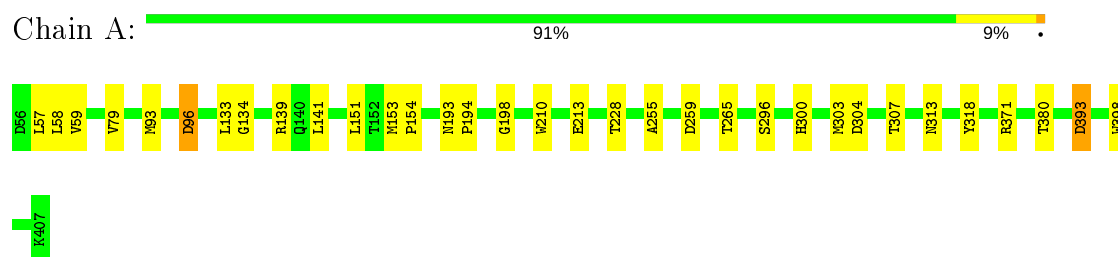
- Molecule 6 is water.

Mol	Chain	Residues	Atoms		ZeroOcc	AltConf
6	A	232	Total 232	O 232	0	0
6	B	256	Total 256	O 256	0	0

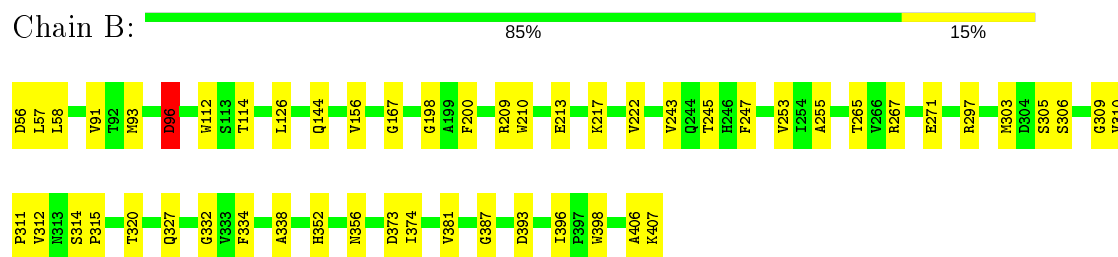
### 3 Residue-property plots [i](#)

These plots are drawn for all protein, RNA and DNA chains in the entry. The first graphic for a chain summarises the proportions of the various outlier classes displayed in the second graphic. The second graphic shows the sequence view annotated by issues in geometry and electron density. Residues are color-coded according to the number of geometric quality criteria for which they contain at least one outlier: green = 0, yellow = 1, orange = 2 and red = 3 or more. A red dot above a residue indicates a poor fit to the electron density ( $RSRZ > 2$ ). Stretches of 2 or more consecutive residues without any outlier are shown as a green connector. Residues present in the sample, but not in the model, are shown in grey.

- Molecule 1: Putative conserved lipoprotein LppS



- Molecule 1: Putative conserved lipoprotein LppS





## 4 Data and refinement statistics

Property	Value	Source
Space group	P 1 21 1	Depositor
Cell constants a, b, c, $\alpha$ , $\beta$ , $\gamma$	61.06Å 94.06Å 75.40Å 90.00° 92.70° 90.00°	Depositor
Resolution (Å)	51.17 – 2.10 51.17 – 2.10	Depositor EDS
% Data completeness (in resolution range)	91.9 (51.17-2.10) 91.9 (51.17-2.10)	Depositor EDS
$R_{merge}$	(Not available)	Depositor
$R_{sym}$	(Not available)	Depositor
$\langle I/\sigma(I) \rangle$ <sup>1</sup>	3.97 (at 2.10Å)	Xtriage
Refinement program	PHENIX (1.12_2829)	Depositor
R, $R_{free}$	0.162 , 0.201 0.162 , 0.201	Depositor DCC
$R_{free}$ test set	2298 reflections (5.04%)	wwPDB-VP
Wilson B-factor (Å <sup>2</sup> )	33.9	Xtriage
Anisotropy	0.317	Xtriage
Bulk solvent $k_{sol}$ (e/Å <sup>3</sup> ), $B_{sol}$ (Å <sup>2</sup> )	0.34 , 49.7	EDS
L-test for twinning <sup>2</sup>	$\langle  L  \rangle = 0.49$ , $\langle L^2 \rangle = 0.33$	Xtriage
Estimated twinning fraction	0.064 for h,-k,-l	Xtriage
$F_o, F_c$ correlation	0.96	EDS
Total number of atoms	6049	wwPDB-VP
Average B, all atoms (Å <sup>2</sup> )	39.0	wwPDB-VP

Xtriage's analysis on translational NCS is as follows: *The largest off-origin peak in the Patterson function is 5.11% of the height of the origin peak. No significant pseudotranslation is detected.*

<sup>1</sup>Intensities estimated from amplitudes.

<sup>2</sup>Theoretical values of  $\langle |L| \rangle$ ,  $\langle L^2 \rangle$  for acentric reflections are 0.5, 0.333 respectively for untwinned datasets, and 0.375, 0.2 for perfectly twinned datasets.

## 5 Model quality [i](#)

### 5.1 Standard geometry [i](#)

Bond lengths and bond angles in the following residue types are not validated in this section: GOL, PEG, SO4, E0Y

The Z score for a bond length (or angle) is the number of standard deviations the observed value is removed from the expected value. A bond length (or angle) with  $|Z| > 5$  is considered an outlier worth inspection. RMSZ is the root-mean-square of all Z scores of the bond lengths (or angles).

Mol	Chain	Bond lengths		Bond angles	
		RMSZ	$\# Z  > 5$	RMSZ	$\# Z  > 5$
1	A	0.51	0/2735	0.67	1/3744 (0.0%)
1	B	0.53	0/2744	0.66	1/3756 (0.0%)
All	All	0.52	0/5479	0.67	2/7500 (0.0%)

There are no bond length outliers.

All (2) bond angle outliers are listed below:

Mol	Chain	Res	Type	Atoms	Z	Observed(°)	Ideal(°)
1	A	96	ASP	CB-CG-OD2	6.16	123.84	118.30
1	B	96	ASP	CB-CG-OD2	5.24	123.02	118.30

There are no chirality outliers.

There are no planarity outliers.

### 5.2 Too-close contacts [i](#)

In the following table, the Non-H and H(model) columns list the number of non-hydrogen atoms and hydrogen atoms in the chain respectively. The H(added) column lists the number of hydrogen atoms added and optimized by MolProbity. The Clashes column lists the number of clashes within the asymmetric unit, whereas Symm-Clashes lists symmetry related clashes.

Mol	Chain	Non-H	H(model)	H(added)	Clashes	Symm-Clashes
1	A	2666	0	2571	26	0
1	B	2675	0	2576	51	0
2	A	23	0	0	3	0
2	B	23	0	0	4	0
3	A	7	10	10	1	0
3	B	14	20	20	9	0
4	A	30	40	38	0	0

*Continued on next page...*

*Continued from previous page...*

Mol	Chain	Non-H	H(model)	H(added)	Clashes	Symm-Clashes
4	B	12	16	16	3	0
5	A	20	0	0	2	0
5	B	5	0	0	0	0
6	A	232	0	0	2	0
6	B	256	0	0	6	0
All	All	5963	86	5231	76	0

The all-atom clashscore is defined as the number of clashes found per 1000 atoms (including hydrogen atoms). The all-atom clashscore for this structure is 7.

All (76) close contacts within the same asymmetric unit are listed below, sorted by their clash magnitude.

Atom-1	Atom-2	Interatomic distance (Å)	Clash overlap (Å)
1:B:306:SER:HB2	3:B:502:PEG:H41	1.61	0.81
1:B:306:SER:HB2	3:B:502:PEG:C4	2.18	0.74
1:B:314:SER:HB2	1:B:315:PRO:HD2	1.72	0.71
1:A:313:ASN:N	5:A:510:SO4:O2	2.17	0.67
1:B:156:VAL:HG11	1:B:245:THR:CG2	2.27	0.64
1:B:156:VAL:HG11	1:B:245:THR:HG21	1.80	0.63
1:A:300:HIS:ND1	6:A:601:HOH:O	2.10	0.62
1:B:93:MET:HE2	1:B:126:LEU:HD13	1.83	0.60
1:B:312:VAL:H	3:B:502:PEG:H11	1.68	0.59
1:A:139[B]:ARG:NH2	6:A:602:HOH:O	2.33	0.58
1:A:133:LEU:HD11	1:B:217:LYS:HE2	1.86	0.57
1:B:156:VAL:CG1	1:B:245:THR:HG21	2.35	0.57
1:B:311:PRO:HA	3:B:502:PEG:H22	1.87	0.56
1:B:56:ASP:OD2	1:B:57:LEU:N	2.30	0.55
1:B:327:GLN:HB2	1:B:334:PHE:CE2	2.43	0.54
1:B:387:GLY:HA3	4:B:504:GOL:H32	1.88	0.54
1:A:139[B]:ARG:CZ	1:A:141:LEU:HD11	2.39	0.53
1:B:305:SER:HB2	1:B:310:VAL:HB	1.90	0.53
1:A:303:MET:HE3	2:A:501:E0Y:CD	2.39	0.53
1:B:320:THR:HG21	2:B:501:E0Y:N15	2.24	0.52
1:B:312:VAL:N	3:B:502:PEG:H11	2.25	0.52
1:B:306:SER:CB	3:B:502:PEG:H41	2.36	0.52
1:B:396:ILE:HG12	4:B:504:GOL:H12	1.92	0.51
1:A:313:ASN:HB2	5:A:510:SO4:O2	2.11	0.51
1:B:93:MET:CE	1:B:126:LEU:HD13	2.39	0.51
3:A:502:PEG:H11	6:B:740:HOH:O	2.09	0.50
1:A:133:LEU:HD11	1:B:217:LYS:NZ	2.28	0.49
1:A:139[B]:ARG:NE	1:A:141:LEU:HD11	2.26	0.49

*Continued on next page...*

*Continued from previous page...*

Atom-1	Atom-2	Interatomic distance (Å)	Clash overlap (Å)
1:B:243:VAL:HG12	6:B:704:HOH:O	2.12	0.49
1:B:309:GLY:O	1:B:311:PRO:HD3	2.14	0.48
1:A:133:LEU:HD11	1:B:217:LYS:CE	2.43	0.47
1:B:93:MET:HE1	1:B:114:THR:CG2	2.43	0.47
1:A:58:LEU:O	1:A:134:GLY:HA3	2.13	0.47
1:A:79:VAL:HG11	1:A:93:MET:HE1	1.97	0.47
1:B:198:GLY:HA3	1:B:210:TRP:CZ2	2.51	0.46
1:B:93:MET:HE3	1:B:93:MET:HB2	1.73	0.46
1:B:338:ALA:HB3	1:B:356:ASN:HB3	1.98	0.45
1:B:406:ALA:O	1:B:407:LYS:HB2	2.16	0.45
1:B:311:PRO:HB3	3:B:502:PEG:H22	1.98	0.45
1:B:297[B]:ARG:HB3	1:B:297[B]:ARG:CZ	2.45	0.45
1:A:198:GLY:HA3	1:A:210:TRP:CZ2	2.52	0.45
4:B:504:GOL:H31	6:B:802:HOH:O	2.16	0.45
1:A:255:ALA:HA	1:A:265:THR:O	2.16	0.45
1:B:253:VAL:HB	1:B:373:ASP:CG	2.37	0.45
1:B:255:ALA:HA	1:B:265:THR:O	2.17	0.44
1:B:338:ALA:CB	1:B:356:ASN:HB3	2.47	0.44
1:A:259:ASP:HB2	1:A:380:THR:HG22	2.00	0.44
1:B:222:VAL:HG11	1:B:247:PHE:CZ	2.52	0.44
1:A:296:SER:OG	1:A:371:ARG:NH1	2.50	0.43
1:B:198:GLY:HA3	1:B:210:TRP:CH2	2.53	0.43
1:B:306:SER:HB2	3:B:502:PEG:H42	1.97	0.43
1:A:213:GLU:HA	1:A:398:TRP:CE3	2.53	0.43
1:B:156:VAL:HG11	1:B:245:THR:HG22	1.99	0.43
1:B:303:MET:HE3	2:B:501:E0Y:CD	2.49	0.43
1:A:304:ASP:O	1:A:307:THR:HB	2.19	0.43
1:B:311:PRO:CA	3:B:502:PEG:H22	2.48	0.43
1:A:153:MET:SD	1:A:154:PRO:HD2	2.59	0.43
1:A:151:LEU:HD23	1:A:151:LEU:HA	1.84	0.42
1:B:96:ASP:N	1:B:96:ASP:OD2	2.35	0.42
1:A:193:ASN:HA	1:A:194:PRO:C	2.40	0.42
1:A:318:TYR:OH	2:A:501:E0Y:C8	2.68	0.42
1:B:144:GLN:HB3	6:B:659:HOH:O	2.20	0.42
1:A:303:MET:CE	2:A:501:E0Y:C9	2.98	0.41
1:B:167:GLY:HA3	1:B:374:ILE:HD11	2.01	0.41
1:B:267:ARG:HA	1:B:271:GLU:O	2.21	0.41
1:A:79:VAL:HG11	1:A:93:MET:CE	2.51	0.41
1:B:381:VAL:HG22	6:B:667:HOH:O	2.20	0.41
1:B:200:PHE:HA	1:B:209:ARG:O	2.21	0.41
1:A:393:ASP:OD1	1:A:393:ASP:N	2.53	0.41

*Continued on next page...*

*Continued from previous page...*

Atom-1	Atom-2	Interatomic distance (Å)	Clash overlap (Å)
1:B:352:HIS:HE1	6:B:617:HOH:O	2.03	0.41
1:A:57:LEU:HA	1:A:57:LEU:HD23	1.80	0.41
1:B:332:GLY:O	2:B:501:E0Y:O8	2.39	0.41
1:B:303:MET:CE	2:B:501:E0Y:CD	2.99	0.41
1:B:91:VAL:HG11	1:B:112:TRP:CD2	2.56	0.41
1:B:58:LEU:HD23	1:B:58:LEU:HA	1.87	0.40
1:B:213:GLU:HA	1:B:398:TRP:CE3	2.56	0.40

There are no symmetry-related clashes.

## 5.3 Torsion angles [i](#)

### 5.3.1 Protein backbone [i](#)

In the following table, the Percentiles column shows the percent Ramachandran outliers of the chain as a percentile score with respect to all X-ray entries followed by that with respect to entries of similar resolution.

The Analysed column shows the number of residues for which the backbone conformation was analysed, and the total number of residues.

Mol	Chain	Analysed	Favoured	Allowed	Outliers	Percentiles	
1	A	351/352 (100%)	341 (97%)	10 (3%)	0	100	100
1	B	352/352 (100%)	340 (97%)	12 (3%)	0	100	100
All	All	703/704 (100%)	681 (97%)	22 (3%)	0	100	100

There are no Ramachandran outliers to report.

### 5.3.2 Protein sidechains [i](#)

In the following table, the Percentiles column shows the percent sidechain outliers of the chain as a percentile score with respect to all X-ray entries followed by that with respect to entries of similar resolution.

The Analysed column shows the number of residues for which the sidechain conformation was analysed, and the total number of residues.

Mol	Chain	Analysed	Rotameric	Outliers	Percentiles	
1	A	284/283 (100%)	280 (99%)	4 (1%)	67	73

*Continued on next page...*

*Continued from previous page...*

Mol	Chain	Analysed	Rotameric	Outliers	Percentiles	
1	B	285/283 (101%)	283 (99%)	2 (1%)	84	88
All	All	569/566 (100%)	563 (99%)	6 (1%)	73	79

All (6) residues with a non-rotameric sidechain are listed below:

Mol	Chain	Res	Type
1	A	59	VAL
1	A	96	ASP
1	A	228	THR
1	A	393	ASP
1	B	96	ASP
1	B	393	ASP

Some sidechains can be flipped to improve hydrogen bonding and reduce clashes. There are no such sidechains identified.

### 5.3.3 RNA [i](#)

There are no RNA molecules in this entry.

## 5.4 Non-standard residues in protein, DNA, RNA chains [i](#)

There are no non-standard protein/DNA/RNA residues in this entry.

## 5.5 Carbohydrates [i](#)

There are no carbohydrates in this entry.

## 5.6 Ligand geometry [i](#)

17 ligands are modelled in this entry.

In the following table, the Counts columns list the number of bonds (or angles) for which Mogul statistics could be retrieved, the number of bonds (or angles) that are observed in the model and the number of bonds (or angles) that are defined in the Chemical Component Dictionary. The Link column lists molecule types, if any, to which the group is linked. The Z score for a bond length (or angle) is the number of standard deviations the observed value is removed from the expected value. A bond length (or angle) with  $|Z| > 2$  is considered an outlier worth inspection. RMSZ is the root-mean-square of all Z scores of the bond lengths (or angles).

Mol	Type	Chain	Res	Link	Bond lengths			Bond angles		
					Counts	RMSZ	# Z  > 2	Counts	RMSZ	# Z  > 2
4	GOL	A	503	-	5,5,5	0.85	0	5,5,5	1.18	0
5	SO4	A	508	-	4,4,4	0.13	0	6,6,6	0.06	0
4	GOL	B	504	-	5,5,5	1.62	1 (20%)	5,5,5	1.20	0
4	GOL	B	505	-	5,5,5	1.08	0	5,5,5	0.76	0
5	SO4	A	509	-	4,4,4	0.20	0	6,6,6	0.32	0
4	GOL	A	506	-	5,5,5	1.41	1 (20%)	5,5,5	0.57	0
5	SO4	B	506	-	4,4,4	0.15	0	6,6,6	0.18	0
5	SO4	A	510	-	4,4,4	0.20	0	6,6,6	0.27	0
4	GOL	A	505	-	5,5,5	0.92	0	5,5,5	1.11	0
3	PEG	B	503	-	6,6,6	0.64	0	5,5,5	0.50	0
3	PEG	B	502	-	6,6,6	0.49	0	5,5,5	0.99	0
3	PEG	A	502	-	6,6,6	0.64	0	5,5,5	0.45	0
4	GOL	A	507	-	5,5,5	1.36	1 (20%)	5,5,5	0.68	0
4	GOL	A	504	-	5,5,5	1.19	0	5,5,5	0.83	0
5	SO4	A	511	-	4,4,4	0.17	0	6,6,6	0.42	0
2	E0Y	A	501	1	19,24,24	4.79	10 (52%)	10,34,34	4.67	4 (40%)
2	E0Y	B	501	1	19,24,24	4.93	9 (47%)	10,34,34	4.91	4 (40%)

In the following table, the Chirals column lists the number of chiral outliers, the number of chiral centers analysed, the number of these observed in the model and the number defined in the Chemical Component Dictionary. Similar counts are reported in the Torsion and Rings columns. '-' means no outliers of that kind were identified.

Mol	Type	Chain	Res	Link	Chirals	Torsions	Rings
4	GOL	A	503	-	-	2/4/4/4	-
4	GOL	B	504	-	-	2/4/4/4	-
4	GOL	B	505	-	-	4/4/4/4	-
4	GOL	A	506	-	-	2/4/4/4	-
4	GOL	A	505	-	-	2/4/4/4	-
3	PEG	B	503	-	-	2/4/4/4	-
3	PEG	B	502	-	-	0/4/4/4	-
3	PEG	A	502	-	-	3/4/4/4	-
4	GOL	A	507	-	-	2/4/4/4	-
4	GOL	A	504	-	-	2/4/4/4	-
2	E0Y	A	501	1	2/2/9/10	8/16/43/43	0/2/2/2
2	E0Y	B	501	1	2/2/9/10	11/16/43/43	0/2/2/2

All (22) bond length outliers are listed below:

Mol	Chain	Res	Type	Atoms	Z	Observed(Å)	Ideal(Å)
2	A	501	E0Y	C13-N12	-12.11	1.21	1.47
2	B	501	E0Y	C13-N12	-11.90	1.21	1.47
2	B	501	E0Y	CA-N	-9.29	1.37	1.47
2	B	501	E0Y	C6-CD	-9.24	1.37	1.53
2	A	501	E0Y	C6-CD	-9.02	1.37	1.53
2	A	501	E0Y	CA-N	-7.79	1.38	1.47
2	B	501	E0Y	CG-CD	-7.10	1.41	1.54
2	A	501	E0Y	CG-CD	-7.01	1.42	1.54
2	B	501	E0Y	CD-N	-5.78	1.39	1.48
2	A	501	E0Y	CD-N	-4.99	1.40	1.48
2	B	501	E0Y	CB-S2	-4.82	1.75	1.82
2	B	501	E0Y	O14-C7	-4.57	1.23	1.42
2	A	501	E0Y	CB-S2	4.55	1.88	1.82
2	A	501	E0Y	O14-C7	-4.25	1.24	1.42
2	A	501	E0Y	C10-S2	-3.59	1.76	1.82
4	B	504	GOL	C3-C2	3.15	1.64	1.51
4	A	506	GOL	O2-C2	-2.57	1.35	1.43
2	B	501	E0Y	C11-C10	2.51	1.65	1.53
2	B	501	E0Y	CG-CB	-2.47	1.47	1.53
2	A	501	E0Y	C11-C10	2.43	1.64	1.53
2	A	501	E0Y	CG-CB	-2.31	1.48	1.53
4	A	507	GOL	C3-C2	2.14	1.60	1.51

All (8) bond angle outliers are listed below:

Mol	Chain	Res	Type	Atoms	Z	Observed(°)	Ideal(°)
2	B	501	E0Y	C-CA-N	13.89	129.48	112.85
2	A	501	E0Y	C-CA-N	12.92	128.32	112.85
2	B	501	E0Y	CG-CD-N	4.78	111.04	102.54
2	A	501	E0Y	CG-CD-N	4.50	110.54	102.54
2	A	501	E0Y	C14-C13-N12	4.39	108.47	103.28
2	B	501	E0Y	C14-C13-N12	4.24	108.29	103.28
2	A	501	E0Y	C9-C8-C6	2.30	115.96	113.51
2	B	501	E0Y	O14-C7-C6	2.22	116.40	111.29

All (4) chirality outliers are listed below:

Mol	Chain	Res	Type	Atom
2	A	501	E0Y	CB
2	A	501	E0Y	CA
2	B	501	E0Y	CB
2	B	501	E0Y	CA



All (40) torsion outliers are listed below:

Mol	Chain	Res	Type	Atoms
4	B	504	GOL	O1-C1-C2-C3
4	B	505	GOL	O1-C1-C2-C3
4	B	505	GOL	C1-C2-C3-O3
4	A	504	GOL	C1-C2-C3-O3
4	A	504	GOL	O2-C2-C3-O3
2	A	501	E0Y	C7-C6-CD-N
2	A	501	E0Y	C7-C6-CD-CG
2	A	501	E0Y	C8-C6-C7-O14
2	A	501	E0Y	C7-C6-C8-C9
2	A	501	E0Y	C7-C6-C8-O8
2	A	501	E0Y	CG-CB-S2-C10
2	A	501	E0Y	C16-C15-N12-C11
2	A	501	E0Y	C16-C15-N12-C13
2	B	501	E0Y	C7-C6-CD-N
2	B	501	E0Y	C7-C6-CD-CG
2	B	501	E0Y	C8-C6-C7-O14
2	B	501	E0Y	CD-C6-C8-C9
2	B	501	E0Y	C7-C6-C8-C9
2	B	501	E0Y	C7-C6-C8-O8
2	B	501	E0Y	CG-CB-S2-C10
2	B	501	E0Y	C11-C10-S2-CB
2	B	501	E0Y	C14-C10-S2-CB
4	B	505	GOL	O2-C2-C3-O3
3	A	502	PEG	O1-C1-C2-O2
3	A	502	PEG	O2-C3-C4-O4
4	A	507	GOL	O1-C1-C2-C3
4	B	504	GOL	O1-C1-C2-O2
2	B	501	E0Y	C8-C6-CD-CG
3	B	503	PEG	O2-C3-C4-O4
4	B	505	GOL	O1-C1-C2-O2
3	B	503	PEG	C4-C3-O2-C2
4	A	503	GOL	O1-C1-C2-O2
4	A	506	GOL	O2-C2-C3-O3
4	A	505	GOL	O1-C1-C2-O2
2	B	501	E0Y	CD-C6-C8-O8
4	A	503	GOL	O1-C1-C2-C3
4	A	506	GOL	C1-C2-C3-O3
4	A	507	GOL	O1-C1-C2-O2
3	A	502	PEG	C1-C2-O2-C3
4	A	505	GOL	O1-C1-C2-C3

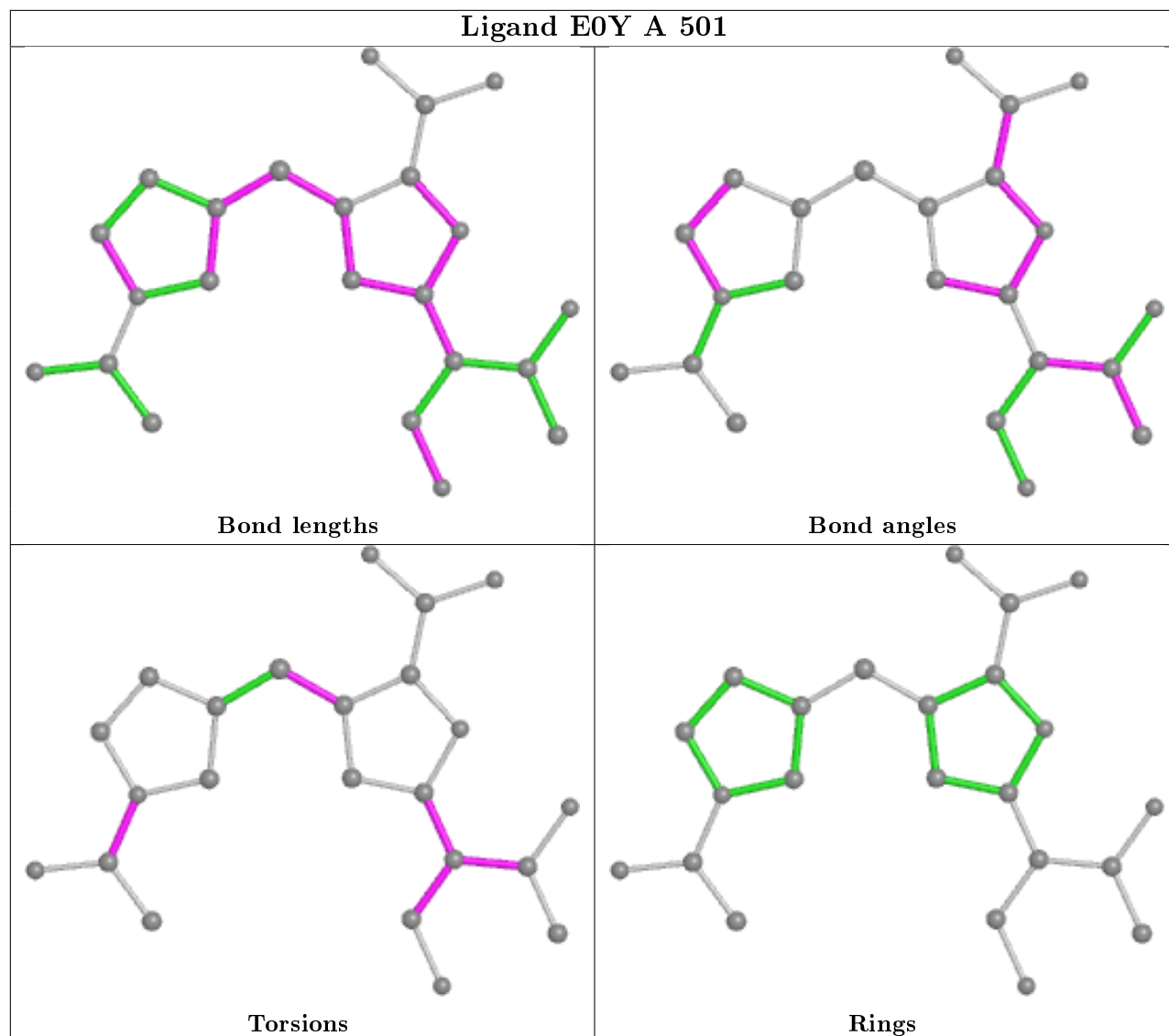
There are no ring outliers.

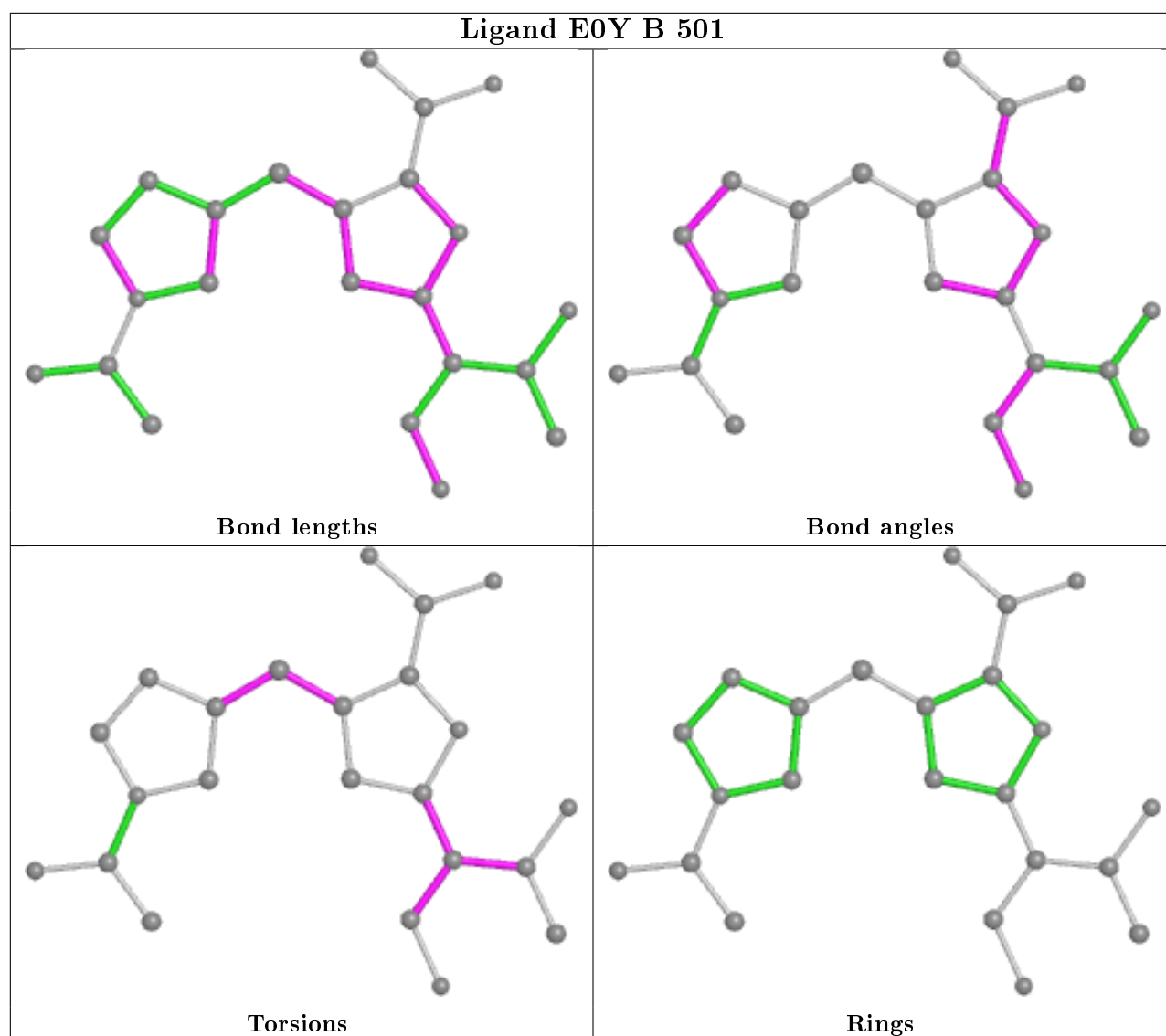
6 monomers are involved in 22 short contacts:

Mol	Chain	Res	Type	Clashes	Symm-Clashes
4	B	504	GOL	3	0
5	A	510	SO4	2	0
3	B	502	PEG	9	0
3	A	502	PEG	1	0
2	A	501	E0Y	3	0
2	B	501	E0Y	4	0

The following is a two-dimensional graphical depiction of Mogul quality analysis of bond lengths, bond angles, torsion angles, and ring geometry for all instances of the Ligand of Interest. In addition, ligands with molecular weight > 250 and outliers as shown on the validation Tables will also be included. For torsion angles, if less than 5% of the Mogul distribution of torsion angles is within 10 degrees of the torsion angle in question, then that torsion angle is considered an outlier. Any bond that is central to one or more torsion angles identified as an outlier by Mogul will be highlighted in the graph. For rings, the root-mean-square deviation (RMSD) between the ring in question and similar rings identified by Mogul is calculated over all ring torsion angles. If the average RMSD is greater than 60 degrees and the minimal RMSD between the ring in question and any Mogul-identified rings is also greater than 60 degrees, then that ring is considered an outlier. The outliers are highlighted in purple. The color gray indicates Mogul did not find sufficient equivalents in the CSD to analyse the geometry.

## Ligand E0Y A 501





## 5.7 Other polymers [i](#)

There are no such residues in this entry.

## 5.8 Polymer linkage issues [i](#)

There are no chain breaks in this entry.

## 6 Fit of model and data [i](#)

### 6.1 Protein, DNA and RNA chains [i](#)

In the following table, the column labelled ‘#RSRZ> 2’ contains the number (and percentage) of RSRZ outliers, followed by percent RSRZ outliers for the chain as percentile scores relative to all X-ray entries and entries of similar resolution. The OWAB column contains the minimum, median, 95<sup>th</sup> percentile and maximum values of the occupancy-weighted average B-factor per residue. The column labelled ‘Q< 0.9’ lists the number of (and percentage) of residues with an average occupancy less than 0.9.

Mol	Chain	Analysed	<RSRZ>	#RSRZ>2	OWAB(Å <sup>2</sup> )	Q<0.9
1	A	352/352 (100%)	-0.32	0 100 100	25, 36, 55, 95	0
1	B	352/352 (100%)	-0.31	0 100 100	21, 34, 58, 102	0
All	All	704/704 (100%)	-0.32	0 100 100	21, 35, 57, 102	0

There are no RSRZ outliers to report.

### 6.2 Non-standard residues in protein, DNA, RNA chains [i](#)

There are no non-standard protein/DNA/RNA residues in this entry.

### 6.3 Carbohydrates [i](#)

There are no carbohydrates in this entry.

### 6.4 Ligands [i](#)

In the following table, the Atoms column lists the number of modelled atoms in the group and the number defined in the chemical component dictionary. The B-factors column lists the minimum, median, 95<sup>th</sup> percentile and maximum values of B factors of atoms in the group. The column labelled ‘Q< 0.9’ lists the number of atoms with occupancy less than 0.9.

Mol	Type	Chain	Res	Atoms	RSCC	RSR	B-factors(Å <sup>2</sup> )	Q<0.9
3	PEG	B	503	7/7	0.58	0.20	65,78,84,86	0
5	SO4	A	508	5/5	0.63	0.48	134,134,134,134	0
4	GOL	A	507	6/6	0.64	0.27	76,91,96,97	0
4	GOL	A	504	6/6	0.67	0.21	74,89,94,95	0
4	GOL	B	504	6/6	0.68	0.18	50,60,68,68	0
3	PEG	A	502	7/7	0.69	0.18	66,79,87,87	0
4	GOL	A	506	6/6	0.74	0.34	82,99,100,100	0

*Continued on next page...*

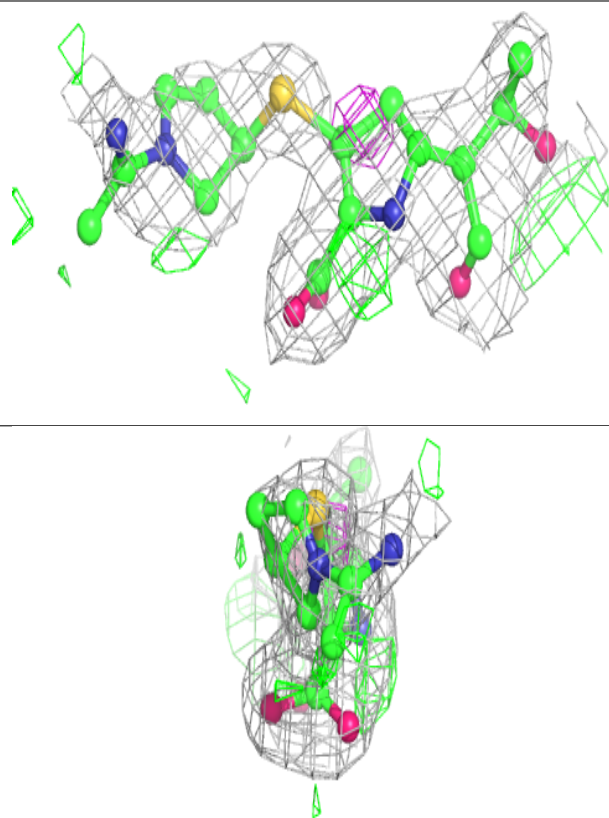
*Continued from previous page...*

Mol	Type	Chain	Res	Atoms	RSCC	RSR	B-factors( $\text{\AA}^2$ )	Q<0.9
5	SO4	A	509	5/5	0.78	0.17	86,88,90,90	0
3	PEG	B	502	7/7	0.82	0.13	51,64,78,79	0
5	SO4	A	511	5/5	0.83	0.24	110,111,111,111	0
2	E0Y	A	501	23/23	0.84	0.22	32,54,62,64	23
2	E0Y	B	501	23/23	0.87	0.26	29,53,66,68	23
5	SO4	B	506	5/5	0.91	0.22	99,99,100,100	0
4	GOL	B	505	6/6	0.92	0.13	57,68,74,78	0
4	GOL	A	503	6/6	0.95	0.08	41,57,70,76	0
4	GOL	A	505	6/6	0.95	0.11	46,58,72,77	0
5	SO4	A	510	5/5	0.96	0.22	50,62,64,65	0

The following is a graphical depiction of the model fit to experimental electron density of all instances of the Ligand of Interest. In addition, ligands with molecular weight > 250 and outliers as shown on the geometry validation Tables will also be included. Each fit is shown from different orientation to approximate a three-dimensional view.

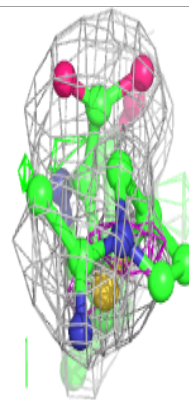
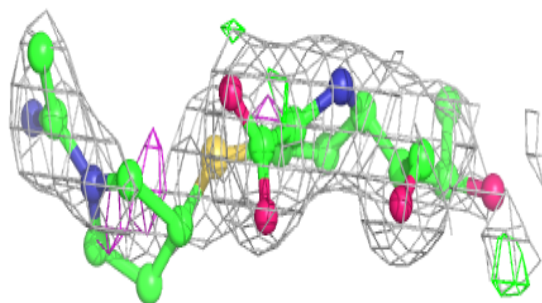
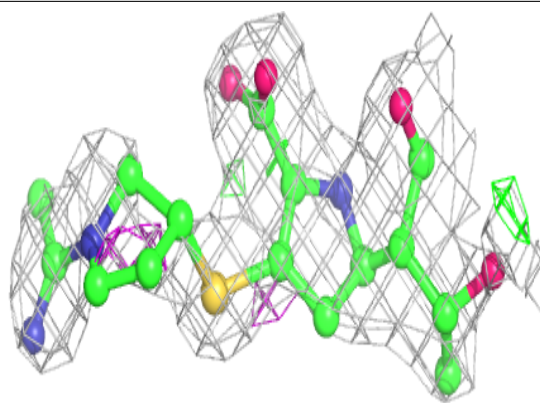
**Electron density around E0Y A 501:**

2mF<sub>o</sub>-DF<sub>c</sub> (at 0.7 rmsd) in gray  
mF<sub>o</sub>-DF<sub>c</sub> (at 3 rmsd) in purple (negative)  
and green (positive)



**Electron density around E0Y B 501:**

$2mF_o-DF_c$  (at 0.7 rmsd) in gray  
 $mF_o-DF_c$  (at 3 rmsd) in purple (negative)  
and green (positive)



## 6.5 Other polymers [i](#)

There are no such residues in this entry.