



Full wwPDB X-ray Structure Validation Report ⓘ

May 15, 2020 – 01:24 am BST

PDB ID : 1BQO
Title : DISCOVERY OF POTENT, ACHIRAL MATRIX METALLOPROTEINASE INHIBITORS
Authors : Pikul, S.; Dunham, K.L.M.; Almstead, N.G.; De, B.; Natchus, M.G.; Anastasio, M.V.; Mcphail, S.J.; Snider, C.E.; Taiwo, Y.O.; Rydel, T.J.; Dunaway, C.M.; Gu, F.; Mieling, G.E.
Deposited on : 1998-08-17
Resolution : 2.30 Å(reported)

This is a Full wwPDB X-ray Structure Validation Report for a publicly released PDB entry.

We welcome your comments at validation@mail.wwpdb.org

A user guide is available at

<https://www.wwpdb.org/validation/2017/XrayValidationReportHelp>

with specific help available everywhere you see the ⓘ symbol.

The following versions of software and data (see [references ⓘ](#)) were used in the production of this report:

MolProbity	:	4.02b-467
Mogul	:	1.8.5 (274361), CSD as541be (2020)
Xtriage (Phenix)	:	NOT EXECUTED
EDS	:	NOT EXECUTED
buster-report	:	1.1.7 (2018)
Percentile statistics	:	20191225.v01 (using entries in the PDB archive December 25th 2019)
Ideal geometry (proteins)	:	Engh & Huber (2001)
Ideal geometry (DNA, RNA)	:	Parkinson et al. (1996)
Validation Pipeline (wwPDB-VP)	:	2.11

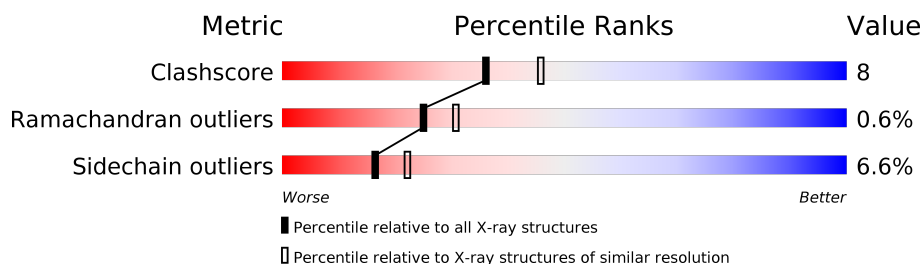
1 Overall quality at a glance

The following experimental techniques were used to determine the structure:

X-RAY DIFFRACTION

The reported resolution of this entry is 2.30 Å.

Percentile scores (ranging between 0-100) for global validation metrics of the entry are shown in the following graphic. The table shows the number of entries on which the scores are based.



Metric	Whole archive (#Entries)	Similar resolution (#Entries, resolution range(Å))
Clashscore	141614	5643 (2.30-2.30)
Ramachandran outliers	138981	5575 (2.30-2.30)
Sidechain outliers	138945	5575 (2.30-2.30)

The table below summarises the geometric issues observed across the polymeric chains and their fit to the electron density. The red, orange, yellow and green segments on the lower bar indicate the fraction of residues that contain outliers for ≥ 3 , 2, 1 and 0 types of geometric quality criteria respectively. A grey segment represents the fraction of residues that are not modelled. The numeric value for each fraction is indicated below the corresponding segment, with a dot representing fractions $\leq 5\%$.

Note EDS was not executed.

Mol	Chain	Length	Quality of chain
1	A	173	
1	B	173	

2 Entry composition

There are 5 unique types of molecules in this entry. The entry contains 2841 atoms, of which 0 are hydrogens and 0 are deuteriums.

In the tables below, the ZeroOcc column contains the number of atoms modelled with zero occupancy, the AltConf column contains the number of residues with at least one atom in alternate conformation and the Trace column contains the number of residues modelled with at most 2 atoms.

- Molecule 1 is a protein called STROMELYSIN-1.

Mol	Chain	Residues	Atoms					ZeroOcc	AltConf	Trace
1	A	169	Total	C	N	O	S	0	0	0
			1346	865	224	255	2			
1	B	173	Total	C	N	O	S	0	0	0
			1376	882	228	264	2			

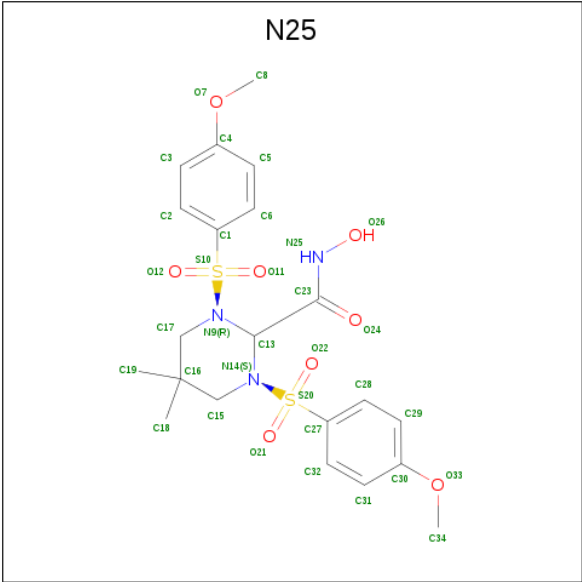
- Molecule 2 is ZINC ION (three-letter code: ZN) (formula: Zn).

Mol	Chain	Residues	Atoms		ZeroOcc	AltConf
2	B	2	Total	Zn	0	0
			2	2		
2	A	2	Total	Zn	0	0
			2	2		

- Molecule 3 is CALCIUM ION (three-letter code: CA) (formula: Ca).

Mol	Chain	Residues	Atoms		ZeroOcc	AltConf
3	B	3	Total	Ca	0	0
			3	3		
3	A	3	Total	Ca	0	0
			3	3		

- Molecule 4 is 1,3-BIS-(4-METHOXY-BENZENESULFONYL)-5,5-DIMETHYL-HEXAHYDRO-PYRIMIDINE-2-CARBOXYLIC ACID HYDROXYAMIDE (three-letter code: N25) (formula: C₂₁H₂₇N₃O₈S₂).



Mol	Chain	Residues	Atoms					ZeroOcc	AltConf
4	B	1	Total	C	N	O	S	0	0
			34	21	3	8	2		

- Molecule 5 is water.

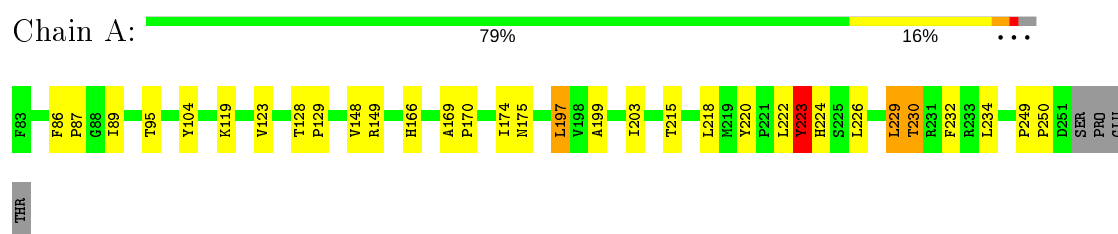
Mol	Chain	Residues	Atoms		ZeroOcc	AltConf
5	A	44	Total	O	0	0
			44	44		
5	B	31	Total	O	0	0
			31	31		

3 Residue-property plots [i](#)

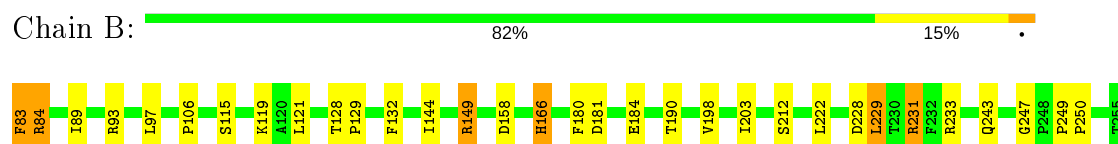
These plots are drawn for all protein, RNA and DNA chains in the entry. The first graphic for a chain summarises the proportions of the various outlier classes displayed in the second graphic. The second graphic shows the sequence view annotated by issues in geometry. Residues are color-coded according to the number of geometric quality criteria for which they contain at least one outlier: green = 0, yellow = 1, orange = 2 and red = 3 or more. Stretches of 2 or more consecutive residues without any outlier are shown as a green connector. Residues present in the sample, but not in the model, are shown in grey.

Note EDS was not executed.

• Molecule 1: STROMELYSIN-1



• Molecule 1: STROMELYSIN-1



4 Data and refinement statistics

Xtriage (Phenix) and EDS were not executed - this section is therefore incomplete.

Property	Value	Source
Space group	P 21 21 21	Depositor
Cell constants a, b, c, α , β , γ	37.90 Å 79.00 Å 106.10 Å 90.00° 90.00° 90.00°	Depositor
Resolution (Å)	6.00 – 2.30	Depositor
% Data completeness (in resolution range)	96.5 (6.00-2.30)	Depositor
R_{merge}	0.09	Depositor
R_{sym}	(Not available)	Depositor
Refinement program	X-PLOR 3.81	Depositor
R, R_{free}	0.229 , 0.294	Depositor
Estimated twinning fraction	No twinning to report.	Xtriage
Total number of atoms	2841	wwPDB-VP
Average B, all atoms (Å ²)	16.0	wwPDB-VP

5 Model quality [i](#)

5.1 Standard geometry [i](#)

Bond lengths and bond angles in the following residue types are not validated in this section: ZN, CA, N25

The Z score for a bond length (or angle) is the number of standard deviations the observed value is removed from the expected value. A bond length (or angle) with $|Z| > 5$ is considered an outlier worth inspection. RMSZ is the root-mean-square of all Z scores of the bond lengths (or angles).

Mol	Chain	Bond lengths		Bond angles	
		RMSZ	$\# Z > 5$	RMSZ	$\# Z > 5$
1	A	0.43	0/1390	0.75	1/1899 (0.1%)
1	B	0.42	0/1421	0.71	1/1941 (0.1%)
All	All	0.42	0/2811	0.73	2/3840 (0.1%)

There are no bond length outliers.

All (2) bond angle outliers are listed below:

Mol	Chain	Res	Type	Atoms	Z	Observed(°)	Ideal(°)
1	A	230	THR	N-CA-C	-5.36	96.54	111.00
1	B	229	LEU	CA-CB-CG	5.27	127.41	115.30

There are no chirality outliers.

There are no planarity outliers.

5.2 Too-close contacts [i](#)

In the following table, the Non-H and H(model) columns list the number of non-hydrogen atoms and hydrogen atoms in the chain respectively. The H(added) column lists the number of hydrogen atoms added and optimized by MolProbity. The Clashes column lists the number of clashes within the asymmetric unit, whereas Symm-Clashes lists symmetry related clashes.

Mol	Chain	Non-H	H(model)	H(added)	Clashes	Symm-Clashes
1	A	1346	0	1270	20	0
1	B	1376	0	1295	24	0
2	A	2	0	0	0	0
2	B	2	0	0	0	0
3	A	3	0	0	0	0
3	B	3	0	0	0	0
4	B	34	0	25	2	0

Continued on next page...

Continued from previous page...

Mol	Chain	Non-H	H(model)	H(added)	Clashes	Symm-Clashes
5	A	44	0	0	0	0
5	B	31	0	0	0	0
All	All	2841	0	2590	43	0

The all-atom clashscore is defined as the number of clashes found per 1000 atoms (including hydrogen atoms). The all-atom clashscore for this structure is 8.

All (43) close contacts within the same asymmetric unit are listed below, sorted by their clash magnitude.

Atom-1	Atom-2	Interatomic distance (Å)	Clash overlap (Å)
1:A:119:LYS:NZ	1:A:229:LEU:HD21	2.06	0.70
1:B:198:VAL:HG13	4:B:401:N25:H5	1.73	0.68
1:A:222:LEU:C	1:A:223:TYR:HD1	2.04	0.60
1:B:128:THR:HB	1:B:129:PRO:HD2	1.84	0.60
1:A:128:THR:HB	1:A:129:PRO:HD2	1.84	0.59
1:B:121:LEU:HD23	1:B:203:ILE:HD13	1.86	0.58
1:B:89:ILE:O	1:B:89:ILE:HG22	2.06	0.56
1:B:89:ILE:N	1:B:89:ILE:HD12	2.21	0.55
1:A:104:TYR:HE1	1:B:106:PRO:HB3	1.72	0.55
1:A:119:LYS:HZ1	1:A:229:LEU:HD21	1.72	0.55
1:B:149:ARG:HH11	1:B:149:ARG:HG2	1.73	0.53
1:A:148:VAL:HG12	1:A:149:ARG:HG2	1.91	0.52
1:A:89:ILE:HG22	1:A:89:ILE:O	2.09	0.52
1:B:166:HIS:O	1:B:166:HIS:HD2	1.93	0.52
1:A:197:LEU:HD23	1:A:224:HIS:HA	1.92	0.51
1:B:83:PHE:CD1	1:B:83:PHE:C	2.84	0.51
1:A:95:THR:HG23	1:A:129:PRO:O	2.12	0.50
1:B:83:PHE:HD1	1:B:84:ARG:N	2.10	0.49
1:A:223:TYR:N	1:A:223:TYR:CD1	2.81	0.49
1:B:121:LEU:CD2	1:B:203:ILE:HD13	2.41	0.49
1:B:83:PHE:N	1:B:212:SER:HG	2.10	0.49
1:A:199:ALA:O	1:A:203:ILE:HG12	2.13	0.48
1:A:169:ALA:O	1:A:175:ASN:HB3	2.15	0.47
1:A:220:TYR:HB3	1:A:222:LEU:HD22	1.99	0.44
1:A:86:PHE:HB3	1:A:87:PRO:HD2	2.00	0.44
1:B:198:VAL:HG13	4:B:401:N25:C5	2.46	0.44
1:B:228:ASP:OD2	1:B:231:ARG:CZ	2.67	0.43
1:B:115:SER:O	1:B:119:LYS:HD2	2.18	0.43
1:A:129:PRO:HB3	1:A:250:PRO:HD3	2.01	0.43
1:A:249:PRO:HA	1:A:250:PRO:HD3	1.86	0.43
1:A:223:TYR:N	1:A:223:TYR:HD1	2.14	0.42

Continued on next page...

Continued from previous page...

Atom-1	Atom-2	Interatomic distance (Å)	Clash overlap (Å)
1:A:229:LEU:HA	1:A:232:PHE:HB3	2.02	0.42
1:A:123:VAL:HG22	1:A:234:LEU:HG	2.02	0.42
1:B:144:ILE:HG23	1:B:180:PHE:HE1	1.85	0.41
1:B:166:HIS:CD2	1:B:166:HIS:O	2.72	0.41
1:B:129:PRO:HD3	1:B:247:GLY:O	2.20	0.41
1:B:249:PRO:HA	1:B:250:PRO:HD3	1.87	0.41
1:B:97:LEU:O	1:B:132:PHE:HA	2.21	0.41
1:B:181:ASP:O	1:B:184:GLU:HG2	2.21	0.41
1:A:197:LEU:HD21	1:A:226:LEU:HB2	2.02	0.41
1:B:231:ARG:HG3	1:B:231:ARG:H	1.73	0.40
1:B:243:GLN:O	1:B:247:GLY:N	2.52	0.40
1:B:115:SER:HB3	1:B:119:LYS:NZ	2.37	0.40

There are no symmetry-related clashes.

5.3 Torsion angles [i](#)

5.3.1 Protein backbone [i](#)

In the following table, the Percentiles column shows the percent Ramachandran outliers of the chain as a percentile score with respect to all X-ray entries followed by that with respect to entries of similar resolution.

The Analysed column shows the number of residues for which the backbone conformation was analysed, and the total number of residues.

Mol	Chain	Analysed	Favoured	Allowed	Outliers	Percentiles	
1	A	167/173 (96%)	155 (93%)	11 (7%)	1 (1%)	25	31
1	B	171/173 (99%)	160 (94%)	10 (6%)	1 (1%)	25	31
All	All	338/346 (98%)	315 (93%)	21 (6%)	2 (1%)	25	31

All (2) Ramachandran outliers are listed below:

Mol	Chain	Res	Type
1	A	223	TYR
1	B	229	LEU

5.3.2 Protein sidechains ⓘ

In the following table, the Percentiles column shows the percent sidechain outliers of the chain as a percentile score with respect to all X-ray entries followed by that with respect to entries of similar resolution.

The Analysed column shows the number of residues for which the sidechain conformation was analysed, and the total number of residues.

Mol	Chain	Analysed	Rotameric	Outliers	Percentiles	
1	A	143/147 (97%)	134 (94%)	9 (6%)	18	24
1	B	147/147 (100%)	137 (93%)	10 (7%)	16	21
All	All	290/294 (99%)	271 (93%)	19 (7%)	16	22

All (19) residues with a non-rotameric sidechain are listed below:

Mol	Chain	Res	Type
1	A	166	HIS
1	A	170	PRO
1	A	174	ILE
1	A	197	LEU
1	A	215	THR
1	A	218	LEU
1	A	223	TYR
1	A	229	LEU
1	A	230	THR
1	B	83	PHE
1	B	84	ARG
1	B	93	ARG
1	B	149	ARG
1	B	158	ASP
1	B	166	HIS
1	B	190	THR
1	B	222	LEU
1	B	231	ARG
1	B	233	ARG

Some sidechains can be flipped to improve hydrogen bonding and reduce clashes. All (2) such sidechains are listed below:

Mol	Chain	Res	Type
1	A	96	HIS
1	A	240	ASN

5.3.3 RNA ⓘ

There are no RNA molecules in this entry.

5.4 Non-standard residues in protein, DNA, RNA chains ⓘ

There are no non-standard protein/DNA/RNA residues in this entry.

5.5 Carbohydrates ⓘ

There are no carbohydrates in this entry.

5.6 Ligand geometry ⓘ

Of 11 ligands modelled in this entry, 10 are monoatomic - leaving 1 for Mogul analysis.

In the following table, the Counts columns list the number of bonds (or angles) for which Mogul statistics could be retrieved, the number of bonds (or angles) that are observed in the model and the number of bonds (or angles) that are defined in the Chemical Component Dictionary. The Link column lists molecule types, if any, to which the group is linked. The Z score for a bond length (or angle) is the number of standard deviations the observed value is removed from the expected value. A bond length (or angle) with $|Z| > 2$ is considered an outlier worth inspection. RMSZ is the root-mean-square of all Z scores of the bond lengths (or angles).

Mol	Type	Chain	Res	Link	Bond lengths			Bond angles		
					Counts	RMSZ	# Z > 2	Counts	RMSZ	# Z > 2
4	N25	B	401	2	34,36,36	3.02	18 (52%)	47,55,55	2.84	21 (44%)

In the following table, the Chirals column lists the number of chiral outliers, the number of chiral centers analysed, the number of these observed in the model and the number defined in the Chemical Component Dictionary. Similar counts are reported in the Torsion and Rings columns. '-' means no outliers of that kind were identified.

Mol	Type	Chain	Res	Link	Chirals	Torsions	Rings
4	N25	B	401	2	-	5/31/52/52	0/3/3/3

All (18) bond length outliers are listed below:

Mol	Chain	Res	Type	Atoms	Z	Observed(Å)	Ideal(Å)
4	B	401	N25	S20-N14	4.99	1.71	1.63
4	B	401	N25	S10-N9	4.95	1.70	1.63
4	B	401	N25	C2-C1	4.82	1.46	1.38

Continued on next page...

Continued from previous page...

Mol	Chain	Res	Type	Atoms	Z	Observed(Å)	Ideal(Å)
4	B	401	N25	C28-C27	4.82	1.46	1.38
4	B	401	N25	C32-C27	4.72	1.46	1.38
4	B	401	N25	C6-C1	4.67	1.46	1.38
4	B	401	N25	C1-S10	4.54	1.82	1.76
4	B	401	N25	C3-C2	4.11	1.46	1.38
4	B	401	N25	C6-C5	4.03	1.46	1.38
4	B	401	N25	C32-C31	3.82	1.45	1.38
4	B	401	N25	C29-C28	3.75	1.45	1.38
4	B	401	N25	C3-C4	3.75	1.46	1.38
4	B	401	N25	C29-C30	3.58	1.45	1.38
4	B	401	N25	C31-C30	3.52	1.45	1.38
4	B	401	N25	C5-C4	3.51	1.45	1.38
4	B	401	N25	C27-S20	3.22	1.80	1.76
4	B	401	N25	O7-C8	-2.79	1.34	1.42
4	B	401	N25	O33-C34	-2.63	1.34	1.42

All (21) bond angle outliers are listed below:

Mol	Chain	Res	Type	Atoms	Z	Observed(°)	Ideal(°)
4	B	401	N25	O12-S10-O11	-7.74	106.98	119.52
4	B	401	N25	C28-C27-S20	-7.25	112.13	119.76
4	B	401	N25	C6-C1-S10	-6.26	113.16	119.76
4	B	401	N25	O12-S10-C1	6.18	115.86	108.05
4	B	401	N25	C34-O33-C30	-4.41	107.93	117.51
4	B	401	N25	C32-C27-C28	4.27	126.41	120.44
4	B	401	N25	O24-C23-N25	-3.73	118.44	123.27
4	B	401	N25	C31-C32-C27	-3.39	115.94	119.45
4	B	401	N25	C27-S20-N14	3.32	113.28	107.36
4	B	401	N25	C31-C30-C29	3.32	125.30	120.18
4	B	401	N25	O11-S10-C1	3.05	111.91	108.05
4	B	401	N25	C2-C1-S10	2.92	122.83	119.76
4	B	401	N25	C18-C16-C15	-2.79	103.25	109.54
4	B	401	N25	C19-C16-C18	2.67	114.24	109.36
4	B	401	N25	C29-C28-C27	-2.62	116.73	119.45
4	B	401	N25	O22-S20-O21	-2.62	115.27	119.52
4	B	401	N25	O22-S20-C27	-2.46	104.94	108.05
4	B	401	N25	C17-C16-C15	2.36	114.94	109.03
4	B	401	N25	C6-C1-C2	2.22	123.54	120.44
4	B	401	N25	O21-S20-N14	2.11	110.82	106.97
4	B	401	N25	C19-C16-C17	-2.07	104.87	109.54

There are no chirality outliers.

All (5) torsion outliers are listed below:

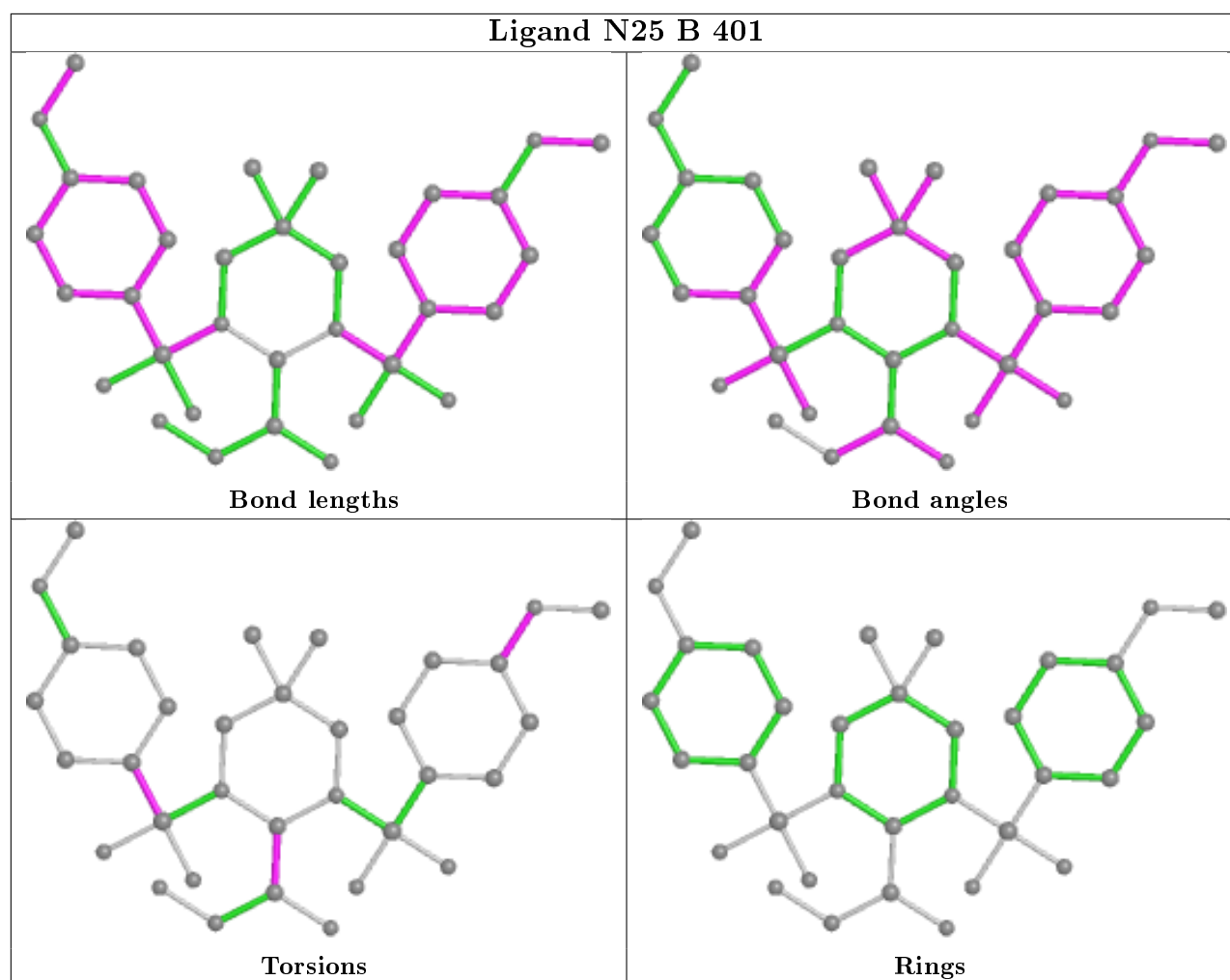
Mol	Chain	Res	Type	Atoms
4	B	401	N25	N9-C13-C23-O24
4	B	401	N25	N14-C13-C23-O24
4	B	401	N25	C31-C30-O33-C34
4	B	401	N25	C29-C30-O33-C34
4	B	401	N25	C6-C1-S10-O11

There are no ring outliers.

1 monomer is involved in 2 short contacts:

Mol	Chain	Res	Type	Clashes	Symm-Clashes
4	B	401	N25	2	0

The following is a two-dimensional graphical depiction of Mogul quality analysis of bond lengths, bond angles, torsion angles, and ring geometry for all instances of the Ligand of Interest. In addition, ligands with molecular weight > 250 and outliers as shown on the validation Tables will also be included. For torsion angles, if less than 5% of the Mogul distribution of torsion angles is within 10 degrees of the torsion angle in question, then that torsion angle is considered an outlier. Any bond that is central to one or more torsion angles identified as an outlier by Mogul will be highlighted in the graph. For rings, the root-mean-square deviation (RMSD) between the ring in question and similar rings identified by Mogul is calculated over all ring torsion angles. If the average RMSD is greater than 60 degrees and the minimal RMSD between the ring in question and any Mogul-identified rings is also greater than 60 degrees, then that ring is considered an outlier. The outliers are highlighted in purple. The color gray indicates Mogul did not find sufficient equivalents in the CSD to analyse the geometry.



5.7 Other polymers [i](#)

There are no such residues in this entry.

5.8 Polymer linkage issues [i](#)

There are no chain breaks in this entry.

6 Fit of model and data ⓘ

6.1 Protein, DNA and RNA chains ⓘ

EDS was not executed - this section is therefore empty.

6.2 Non-standard residues in protein, DNA, RNA chains ⓘ

EDS was not executed - this section is therefore empty.

6.3 Carbohydrates ⓘ

EDS was not executed - this section is therefore empty.

6.4 Ligands ⓘ

EDS was not executed - this section is therefore empty.

6.5 Other polymers ⓘ

EDS was not executed - this section is therefore empty.