



# wwPDB X-ray Structure Validation Summary Report ⓘ

May 22, 2020 – 12:47 am BST

PDB ID : 1BRW  
Title : THE CRYSTAL STRUCTURE OF PYRIMIDINE NUCLEOSIDE PHOSPHORYLASE IN A CLOSED CONFORMATION  
Authors : Pugmire, M.J.; Ealick, S.E.  
Deposited on : 1998-08-25  
Resolution : 2.10 Å(reported)

This is a wwPDB X-ray Structure Validation Summary Report for a publicly released PDB entry.

We welcome your comments at [validation@mail.wwpdb.org](mailto:validation@mail.wwpdb.org)

A user guide is available at

<https://www.wwpdb.org/validation/2017/XrayValidationReportHelp>

with specific help available everywhere you see the ⓘ symbol.

---

The following versions of software and data (see [references ⓘ](#)) were used in the production of this report:

MolProbity : 4.02b-467  
Mogul : 1.8.5 (274361), CSD as541be (2020)  
Xtriage (Phenix) : 1.13  
EDS : 2.11  
Percentile statistics : 20191225.v01 (using entries in the PDB archive December 25th 2019)  
Refmac : 5.8.0158  
CCP4 : 7.0.044 (Gargrove)  
Ideal geometry (proteins) : Engh & Huber (2001)  
Ideal geometry (DNA, RNA) : Parkinson et al. (1996)  
Validation Pipeline (wwPDB-VP) : 2.11

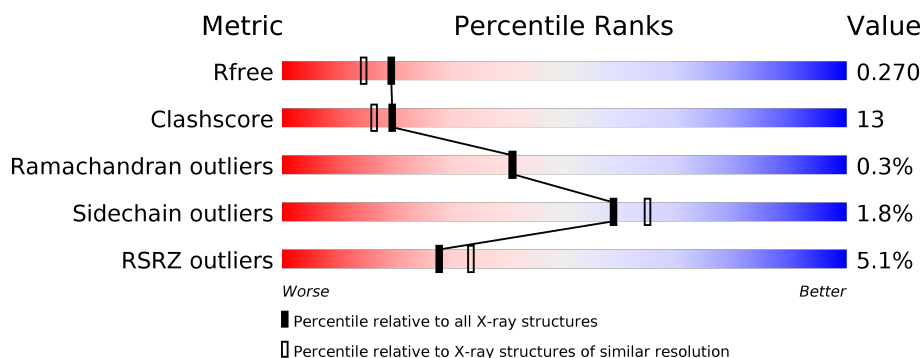
# 1 Overall quality at a glance

The following experimental techniques were used to determine the structure:

## *X-RAY DIFFRACTION*

The reported resolution of this entry is 2.10 Å.

Percentile scores (ranging between 0-100) for global validation metrics of the entry are shown in the following graphic. The table shows the number of entries on which the scores are based.



Metric	Whole archive (#Entries)	Similar resolution (#Entries, resolution range(Å))
$R_{free}$	130704	5197 (2.10-2.10)
Clashscore	141614	5710 (2.10-2.10)
Ramachandran outliers	138981	5647 (2.10-2.10)
Sidechain outliers	138945	5648 (2.10-2.10)
RSRZ outliers	127900	5083 (2.10-2.10)

The table below summarises the geometric issues observed across the polymeric chains and their fit to the electron density. The red, orange, yellow and green segments on the lower bar indicate the fraction of residues that contain outliers for  $\geq 3$ , 2, 1 and 0 types of geometric quality criteria respectively. A grey segment represents the fraction of residues that are not modelled. The numeric value for each fraction is indicated below the corresponding segment, with a dot representing fractions  $\leq 5\%$ . The upper red bar (where present) indicates the fraction of residues that have poor fit to the electron density. The numeric value is given above the bar.

Mol	Chain	Length	Quality of chain
1	A	433	<div> <div>3%</div> <div> <div></div> <div>86%</div> <div>14%</div> </div> </div>
1	B	433	<div> <div>7%</div> <div> <div></div> <div>78%</div> <div>21%</div> <div>.</div> </div> </div>

## 2 Entry composition [i](#)

There are 6 unique types of molecules in this entry. The entry contains 6592 atoms, of which 0 are hydrogens and 0 are deuteriums.

In the tables below, the ZeroOcc column contains the number of atoms modelled with zero occupancy, the AltConf column contains the number of residues with at least one atom in alternate conformation and the Trace column contains the number of residues modelled with at most 2 atoms.

- Molecule 1 is a protein called PROTEIN (PYRIMIDINE NUCLEOSIDE PHOSPHORYLASE).

Mol	Chain	Residues	Atoms					ZeroOcc	AltConf	Trace
1	A	433	Total	C	N	O	S	0	0	0
			3217	2021	558	620	18			
1	B	433	Total	C	N	O	S	0	0	0
			3221	2024	559	620	18			

- Molecule 2 is PHOSPHATE ION (three-letter code: PO4) (formula: O<sub>4</sub>P).



Mol	Chain	Residues	Atoms			ZeroOcc	AltConf
2	A	1	Total	O	P	0	0
			5	4	1		
2	B	1	Total	O	P	0	0
			5	4	1		

- Molecule 3 is CALCIUM ION (three-letter code: CA) (formula: Ca).

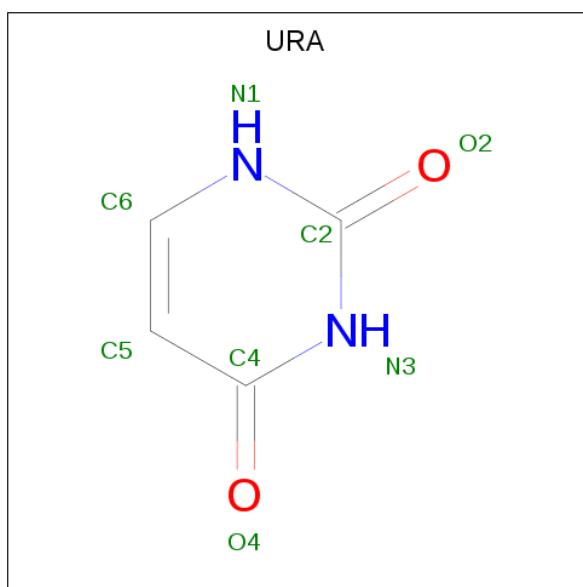
Mol	Chain	Residues	Atoms		ZeroOcc	AltConf
3	B	1	Total	Ca	0	0
			1	1		
3	A	1	Total	Ca	0	0
			1	1		

- Molecule 4 is 2-(N-MORPHOLINO)-ETHANESULFONIC ACID (three-letter code: MES) (formula:  $C_6H_{13}NO_4S$ ).



Mol	Chain	Residues	Atoms					ZeroOcc	AltConf
4	A	1	Total	C	N	O	S	0	0
			12	6	1	4	1		
4	B	1	Total	C	N	O	S	0	0
			12	6	1	4	1		

- Molecule 5 is URACIL (three-letter code: URA) (formula:  $C_4H_4N_2O_2$ ).



Mol	Chain	Residues	Atoms				ZeroOcc	AltConf
5	B	1	Total	C	N	O	0	0
			8	4	2	2		

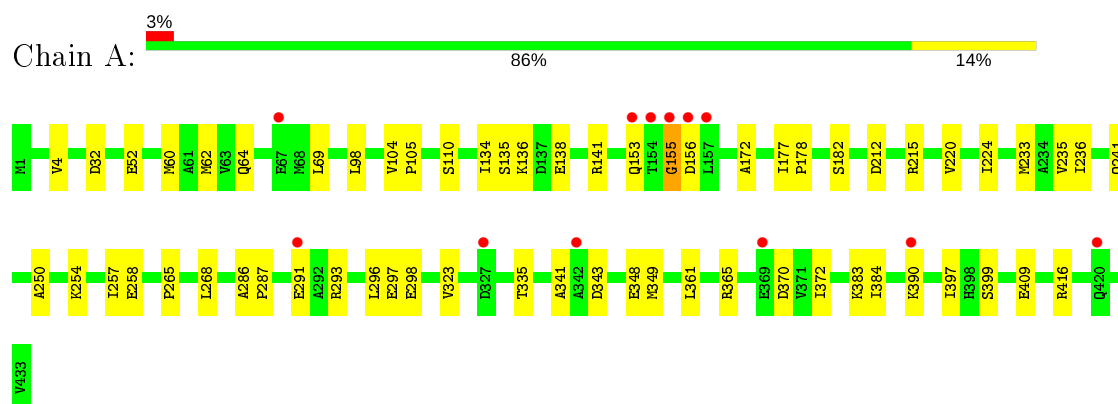
- Molecule 6 is water.

Mol	Chain	Residues	Atoms		ZeroOcc	AltConf
6	A	68	Total	O	0	0
			68	68		
6	B	42	Total	O	0	0
			42	42		

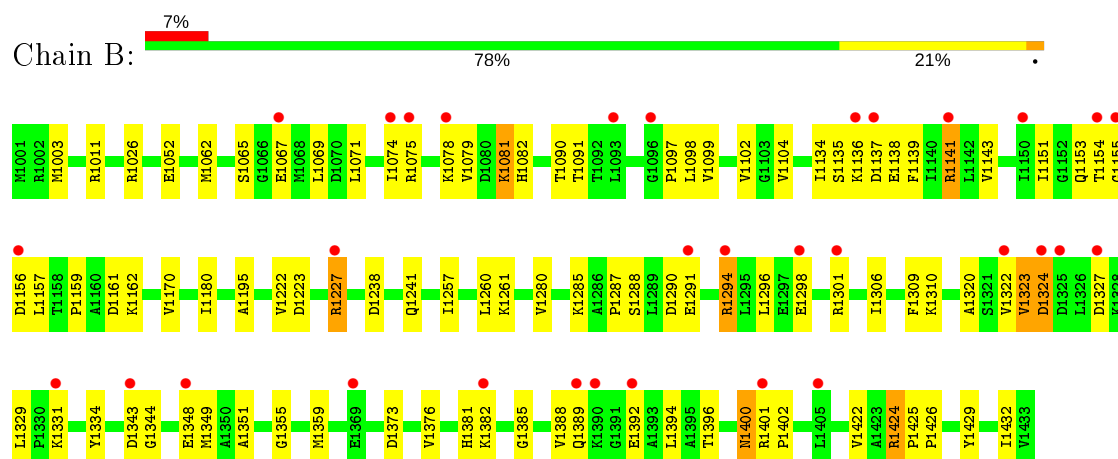
### 3 Residue-property plots [i](#)

These plots are drawn for all protein, RNA and DNA chains in the entry. The first graphic for a chain summarises the proportions of the various outlier classes displayed in the second graphic. The second graphic shows the sequence view annotated by issues in geometry and electron density. Residues are color-coded according to the number of geometric quality criteria for which they contain at least one outlier: green = 0, yellow = 1, orange = 2 and red = 3 or more. A red dot above a residue indicates a poor fit to the electron density ( $RSRZ > 2$ ). Stretches of 2 or more consecutive residues without any outlier are shown as a green connector. Residues present in the sample, but not in the model, are shown in grey.

- Molecule 1: PROTEIN (PYRIMIDINE NUCLEOSIDE PHOSPHORYLASE)



- Molecule 1: PROTEIN (PYRIMIDINE NUCLEOSIDE PHOSPHORYLASE)



## 4 Data and refinement statistics

Property	Value	Source
Space group	P 1 21 1	Depositor
Cell constants a, b, c, $\alpha$ , $\beta$ , $\gamma$	53.57Å 70.45Å 122.78Å 90.00° 98.02° 90.00°	Depositor
Resolution (Å)	30.00 – 2.10 28.12 – 1.99	Depositor EDS
% Data completeness (in resolution range)	82.9 (30.00-2.10) 83.7 (28.12-1.99)	Depositor EDS
$R_{merge}$	(Not available)	Depositor
$R_{sym}$	0.07	Depositor
$\langle I/\sigma(I) \rangle$ <sup>1</sup>	1.47 (at 1.98Å)	Xtriage
Refinement program	X-PLOR 3.8	Depositor
R, $R_{free}$	0.232 , 0.276 0.234 , 0.270	Depositor DCC
$R_{free}$ test set	2756 reflections (5.07%)	wwPDB-VP
Wilson B-factor (Å <sup>2</sup> )	19.6	Xtriage
Anisotropy	0.692	Xtriage
Bulk solvent $k_{sol}$ (e/Å <sup>3</sup> ), $B_{sol}$ (Å <sup>2</sup> )	0.37 , 54.5	EDS
L-test for twinning <sup>2</sup>	$\langle  L  \rangle = 0.48$ , $\langle L^2 \rangle = 0.31$	Xtriage
Estimated twinning fraction	No twinning to report.	Xtriage
$F_o, F_c$ correlation	0.91	EDS
Total number of atoms	6592	wwPDB-VP
Average B, all atoms (Å <sup>2</sup> )	26.0	wwPDB-VP

Xtriage's analysis on translational NCS is as follows: *The largest off-origin peak in the Patterson function is 4.39% of the height of the origin peak. No significant pseudotranslation is detected.*

<sup>1</sup>Intensities estimated from amplitudes.

<sup>2</sup>Theoretical values of  $\langle |L| \rangle$ ,  $\langle L^2 \rangle$  for acentric reflections are 0.5, 0.333 respectively for untwinned datasets, and 0.375, 0.2 for perfectly twinned datasets.

## 5 Model quality [i](#)

### 5.1 Standard geometry [i](#)

Bond lengths and bond angles in the following residue types are not validated in this section: PO4, CA, MES, URA

The Z score for a bond length (or angle) is the number of standard deviations the observed value is removed from the expected value. A bond length (or angle) with  $|Z| > 5$  is considered an outlier worth inspection. RMSZ is the root-mean-square of all Z scores of the bond lengths (or angles).

Mol	Chain	Bond lengths		Bond angles	
		RMSZ	$\# Z  > 5$	RMSZ	$\# Z  > 5$
1	A	0.52	1/3257 (0.0%)	0.67	1/4401 (0.0%)
1	B	0.56	2/3261 (0.1%)	0.71	9/4405 (0.2%)
All	All	0.54	3/6518 (0.0%)	0.69	10/8806 (0.1%)

All (3) bond length outliers are listed below:

Mol	Chain	Res	Type	Atoms	Z	Observed(Å)	Ideal(Å)
1	A	155	GLY	C-N	-17.63	0.93	1.34
1	B	1324	ASP	C-N	-14.80	1.00	1.34
1	B	1323	VAL	C-N	-11.54	1.07	1.34

The worst 5 of 10 bond angle outliers are listed below:

Mol	Chain	Res	Type	Atoms	Z	Observed(°)	Ideal(°)
1	A	155	GLY	C-N-CA	15.06	159.34	121.70
1	B	1324	ASP	C-N-CA	10.12	147.00	121.70
1	B	1227	ARG	NE-CZ-NH2	7.41	124.00	120.30
1	B	1294	ARG	NE-CZ-NH2	7.34	123.97	120.30
1	B	1301	ARG	NE-CZ-NH2	7.32	123.96	120.30

There are no chirality outliers.

There are no planarity outliers.

### 5.2 Too-close contacts [i](#)

In the following table, the Non-H and H(model) columns list the number of non-hydrogen atoms and hydrogen atoms in the chain respectively. The H(added) column lists the number of hydrogen atoms added and optimized by MolProbity. The Clashes column lists the number of clashes within the asymmetric unit, whereas Symm-Clashes lists symmetry related clashes.



Mol	Chain	Non-H	H(model)	H(added)	Clashes	Symm-Clashes
1	A	3217	0	3324	41	0
1	B	3221	0	3331	130	0
2	A	5	0	0	0	0
2	B	5	0	0	0	0
3	A	1	0	0	0	0
3	B	1	0	0	0	0
4	A	12	0	13	0	0
4	B	12	0	13	2	0
5	B	8	0	3	1	0
6	A	68	0	0	0	0
6	B	42	0	0	3	0
All	All	6592	0	6684	169	0

The all-atom clashscore is defined as the number of clashes found per 1000 atoms (including hydrogen atoms). The all-atom clashscore for this structure is 13.

The worst 5 of 169 close contacts within the same asymmetric unit are listed below, sorted by their clash magnitude.

Atom-1	Atom-2	Interatomic distance (Å)	Clash overlap (Å)
1:B:1074:ILE:HB	1:B:1078:LYS:CE	1.42	1.46
1:B:1074:ILE:HD12	1:B:1078:LYS:NZ	1.37	1.39
1:A:287:PRO:CD	1:A:291:GLU:OE1	1.78	1.31
1:B:1382:LYS:HD3	1:B:1388:VAL:CG1	1.61	1.29
1:A:287:PRO:HD2	1:A:291:GLU:OE1	1.15	1.28

There are no symmetry-related clashes.

## 5.3 Torsion angles [i](#)

### 5.3.1 Protein backbone [i](#)

In the following table, the Percentiles column shows the percent Ramachandran outliers of the chain as a percentile score with respect to all X-ray entries followed by that with respect to entries of similar resolution.

The Analysed column shows the number of residues for which the backbone conformation was analysed, and the total number of residues.

Mol	Chain	Analysed	Favoured	Allowed	Outliers	Percentiles	
1	A	431/433 (100%)	416 (96%)	13 (3%)	2 (0%)	29	26
1	B	431/433 (100%)	411 (95%)	19 (4%)	1 (0%)	47	49

*Continued on next page...*

*Continued from previous page...*

Mol	Chain	Analysed	Favoured	Allowed	Outliers	Percentiles
All	All	862/866 (100%)	827 (96%)	32 (4%)	3 (0%)	41 41

All (3) Ramachandran outliers are listed below:

Mol	Chain	Res	Type
1	A	155	GLY
1	A	156	ASP
1	B	1091	THR

### 5.3.2 Protein sidechains ⓘ

In the following table, the Percentiles column shows the percent sidechain outliers of the chain as a percentile score with respect to all X-ray entries followed by that with respect to entries of similar resolution.

The Analysed column shows the number of residues for which the sidechain conformation was analysed, and the total number of residues.

Mol	Chain	Analysed	Rotameric	Outliers	Percentiles
1	A	336/337 (100%)	330 (98%)	6 (2%)	59 65
1	B	337/337 (100%)	331 (98%)	6 (2%)	59 65
All	All	673/674 (100%)	661 (98%)	12 (2%)	59 65

5 of 12 residues with a non-rotameric sidechain are listed below:

Mol	Chain	Res	Type
1	A	409	GLU
1	B	1003	MET
1	B	1290	ASP
1	A	349	MET
1	B	1090	THR

Some sidechains can be flipped to improve hydrogen bonding and reduce clashes. 5 of 6 such sidechains are listed below:

Mol	Chain	Res	Type
1	A	316	GLN
1	B	1400	ASN
1	B	1249	ASN
1	A	241	GLN
1	B	1381	HIS

### 5.3.3 RNA ⓘ

There are no RNA molecules in this entry.

## 5.4 Non-standard residues in protein, DNA, RNA chains ⓘ

There are no non-standard protein/DNA/RNA residues in this entry.

## 5.5 Carbohydrates ⓘ

There are no carbohydrates in this entry.

## 5.6 Ligand geometry ⓘ

Of 7 ligands modelled in this entry, 2 are monoatomic - leaving 5 for Mogul analysis.

In the following table, the Counts columns list the number of bonds (or angles) for which Mogul statistics could be retrieved, the number of bonds (or angles) that are observed in the model and the number of bonds (or angles) that are defined in the Chemical Component Dictionary. The Link column lists molecule types, if any, to which the group is linked. The Z score for a bond length (or angle) is the number of standard deviations the observed value is removed from the expected value. A bond length (or angle) with  $|Z| > 2$  is considered an outlier worth inspection. RMSZ is the root-mean-square of all Z scores of the bond lengths (or angles).

Mol	Type	Chain	Res	Link	Bond lengths			Bond angles		
					Counts	RMSZ	# $ Z  > 2$	Counts	RMSZ	# $ Z  > 2$
5	URA	B	5001	-	6,8,8	2.08	2 (33%)	4,10,10	11.13	4 (100%)
2	PO4	A	2001	-	4,4,4	2.03	1 (25%)	6,6,6	0.64	0
4	MES	A	6002	-	12,12,12	9.17	9 (75%)	14,16,16	2.49	5 (35%)
4	MES	B	6001	-	12,12,12	8.91	9 (75%)	14,16,16	2.64	6 (42%)
2	PO4	B	2002	-	4,4,4	1.95	1 (25%)	6,6,6	0.41	0

In the following table, the Chirals column lists the number of chiral outliers, the number of chiral centers analysed, the number of these observed in the model and the number defined in the Chemical Component Dictionary. Similar counts are reported in the Torsion and Rings columns. '-' means no outliers of that kind were identified.

Mol	Type	Chain	Res	Link	Chirals	Torsions	Rings
5	URA	B	5001	-	-	-	0/1/1/1
4	MES	A	6002	-	-	0/6/14/14	0/1/1/1
4	MES	B	6001	-	-	0/6/14/14	0/1/1/1

The worst 5 of 22 bond length outliers are listed below:

Mol	Chain	Res	Type	Atoms	Z	Observed(Å)	Ideal(Å)
4	A	6002	MES	C8-S	-24.05	1.43	1.77
4	B	6001	MES	C8-S	-23.25	1.44	1.77
4	A	6002	MES	O2S-S	11.96	1.80	1.45
4	B	6001	MES	O2S-S	11.83	1.79	1.45
4	A	6002	MES	O1S-S	11.74	1.79	1.45

The worst 5 of 15 bond angle outliers are listed below:

Mol	Chain	Res	Type	Atoms	Z	Observed(°)	Ideal(°)
5	B	5001	URA	N1-C2-N3	-16.02	115.69	128.43
5	B	5001	URA	C6-N1-C2	14.77	121.71	114.42
4	B	6001	MES	O3S-S-C8	6.08	115.60	105.77
4	A	6002	MES	O3S-S-C8	5.61	114.84	105.77
4	B	6001	MES	O1S-S-C8	5.23	113.22	106.92

There are no chirality outliers.

There are no torsion outliers.

There are no ring outliers.

2 monomers are involved in 3 short contacts:

Mol	Chain	Res	Type	Clashes	Symm-Clashes
5	B	5001	URA	1	0
4	B	6001	MES	2	0

## 5.7 Other polymers [i](#)

There are no such residues in this entry.

## 5.8 Polymer linkage issues [i](#)

The following chains have linkage breaks:

Mol	Chain	Number of breaks
1	B	2
1	A	1

All chain breaks are listed below:

Model	Chain	Residue-1	Atom-1	Residue-2	Atom-2	Distance (Å)
1	B	1323:VAL	C	1324:ASP	N	1.07
1	B	1324:ASP	C	1325:ASP	N	1.00
1	A	155:GLY	C	156:ASP	N	0.93

## 6 Fit of model and data [i](#)

### 6.1 Protein, DNA and RNA chains [i](#)

In the following table, the column labelled ‘#RSRZ> 2’ contains the number (and percentage) of RSRZ outliers, followed by percent RSRZ outliers for the chain as percentile scores relative to all X-ray entries and entries of similar resolution. The OWAB column contains the minimum, median, 95<sup>th</sup> percentile and maximum values of the occupancy-weighted average B-factor per residue. The column labelled ‘Q< 0.9’ lists the number of (and percentage) of residues with an average occupancy less than 0.9.

Mol	Chain	Analysed	<RSRZ>	#RSRZ>2	OWAB(Å <sup>2</sup> )	Q<0.9
1	A	433/433 (100%)	-0.11	12 (2%) 53 59	7, 21, 39, 52	0
1	B	433/433 (100%)	0.38	32 (7%) 14 18	6, 30, 48, 60	0
All	All	866/866 (100%)	0.13	44 (5%) 28 33	6, 25, 45, 60	0

The worst 5 of 44 RSRZ outliers are listed below:

Mol	Chain	Res	Type	RSRZ
1	B	1154	THR	8.2
1	A	154	THR	7.2
1	A	155	GLY	6.3
1	B	1141	ARG	5.9
1	B	1325	ASP	5.6

### 6.2 Non-standard residues in protein, DNA, RNA chains [i](#)

There are no non-standard protein/DNA/RNA residues in this entry.

### 6.3 Carbohydrates [i](#)

There are no carbohydrates in this entry.

### 6.4 Ligands [i](#)

In the following table, the Atoms column lists the number of modelled atoms in the group and the number defined in the chemical component dictionary. The B-factors column lists the minimum, median, 95<sup>th</sup> percentile and maximum values of B factors of atoms in the group. The column labelled ‘Q< 0.9’ lists the number of atoms with occupancy less than 0.9.

Mol	Type	Chain	Res	Atoms	RSCC	RSR	B-factors( $\text{\AA}^2$ )	Q<0.9
5	URA	B	5001	8/8	0.68	0.21	25,33,37,37	0
3	CA	B	3002	1/1	0.79	0.10	22,22,22,22	0
4	MES	A	6002	12/12	0.94	0.14	39,47,52,52	0
4	MES	B	6001	12/12	0.94	0.14	30,34,35,36	0
2	PO4	B	2002	5/5	0.97	0.15	12,17,24,28	0
3	CA	A	3001	1/1	0.98	0.05	14,14,14,14	0
2	PO4	A	2001	5/5	0.98	0.13	12,17,19,26	0

## 6.5 Other polymers [i](#)

There are no such residues in this entry.