



# Full wwPDB X-ray Structure Validation Report ⓘ

May 25, 2020 – 01:55 pm BST

PDB ID : 4BRB  
Title : Crystal structure of the integral membrane enzyme DgkA-ref, delta 7  
Authors : Li, D.; Caffrey, M.  
Deposited on : 2013-06-04  
Resolution : 2.55 Å(reported)

This is a Full wwPDB X-ray Structure Validation Report for a publicly released PDB entry.

We welcome your comments at [validation@mail.wwpdb.org](mailto:validation@mail.wwpdb.org)

A user guide is available at

<https://www.wwpdb.org/validation/2017/XrayValidationReportHelp>

with specific help available everywhere you see the ⓘ symbol.

---

The following versions of software and data (see [references ⓘ](#)) were used in the production of this report:

MolProbity : 4.02b-467  
Mogul : 1.8.5 (274361), CSD as541be (2020)  
Xtriage (Phenix) : 1.13  
EDS : 2.11  
buster-report : 1.1.7 (2018)  
Percentile statistics : 20191225.v01 (using entries in the PDB archive December 25th 2019)  
Refmac : 5.8.0158  
CCP4 : 7.0.044 (Gargrove)  
Ideal geometry (proteins) : Engh & Huber (2001)  
Ideal geometry (DNA, RNA) : Parkinson et al. (1996)  
Validation Pipeline (wwPDB-VP) : 2.11

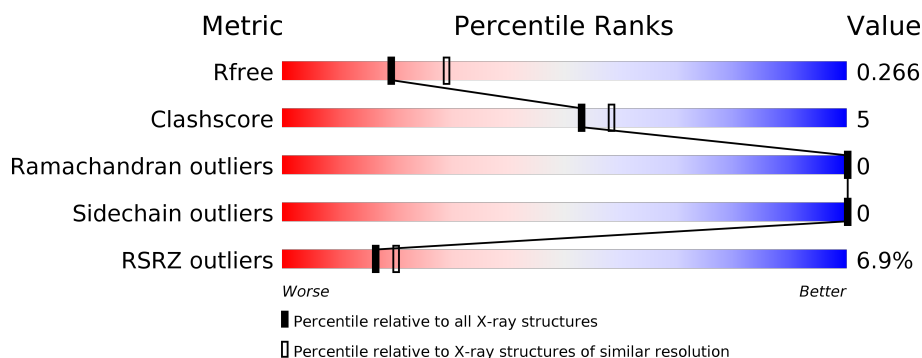
# 1 Overall quality at a glance

The following experimental techniques were used to determine the structure:

*X-RAY DIFFRACTION*

The reported resolution of this entry is 2.55 Å.

Percentile scores (ranging between 0-100) for global validation metrics of the entry are shown in the following graphic. The table shows the number of entries on which the scores are based.



Metric	Whole archive (#Entries)	Similar resolution (#Entries, resolution range(Å))
$R_{free}$	130704	1284 (2.56-2.52)
Clashscore	141614	1332 (2.56-2.52)
Ramachandran outliers	138981	1315 (2.56-2.52)
Sidechain outliers	138945	1315 (2.56-2.52)
RSRZ outliers	127900	1272 (2.56-2.52)

The table below summarises the geometric issues observed across the polymeric chains and their fit to the electron density. The red, orange, yellow and green segments on the lower bar indicate the fraction of residues that contain outliers for  $\geq 3$ , 2, 1 and 0 types of geometric quality criteria respectively. A grey segment represents the fraction of residues that are not modelled. The numeric value for each fraction is indicated below the corresponding segment, with a dot representing fractions  $\leq 5\%$ . The upper red bar (where present) indicates the fraction of residues that have poor fit to the electron density. The numeric value is given above the bar.

Mol	Chain	Length	Quality of chain
1	A	130	<div> <div>6%</div> <div> <div></div> <div>78%</div> <div>10%</div> <div>12%</div> </div> </div>
1	B	130	<div> <div>2%</div> <div> <div></div> <div>62%</div> <div>14%</div> <div>24%</div> </div> </div>
1	C	130	<div> <div>5%</div> <div> <div></div> <div>65%</div> <div>7%</div> <div>28%</div> </div> </div>
1	D	130	<div> <div></div> <div> <div></div> <div>75%</div> <div>8%</div> <div>17%</div> </div> </div>
1	E	130	<div> <div>8%</div> <div> <div></div> <div>59%</div> <div>7%</div> <div>34%</div> </div> </div>
1	F	130	<div> <div>12%</div> <div> <div></div> <div>63%</div> <div>8%</div> <div>29%</div> </div> </div>

The following table lists non-polymeric compounds, carbohydrate monomers and non-standard residues in protein, DNA, RNA chains that are outliers for geometric or electron-density-fit criteria:

Mol	Type	Chain	Res	Chirality	Geometry	Clashes	Electron density
2	78N	A	1123	-	-	-	X
2	78N	C	1122	-	-	-	X

## 2 Entry composition

There are 6 unique types of molecules in this entry. The entry contains 4762 atoms, of which 0 are hydrogens and 0 are deuteriums.

In the tables below, the ZeroOcc column contains the number of atoms modelled with zero occupancy, the AltConf column contains the number of residues with at least one atom in alternate conformation and the Trace column contains the number of residues modelled with at most 2 atoms.

- Molecule 1 is a protein called DIACYLGLYCEROL KINASE.

Mol	Chain	Residues	Atoms					ZeroOcc	AltConf	Trace
1	A	115	Total	C	N	O	S	0	0	0
			882	578	148	153	3			
1	B	99	Total	C	N	O	S	0	0	0
			751	490	123	135	3			
1	C	93	Total	C	N	O	S	0	0	0
			702	458	115	126	3			
1	D	108	Total	C	N	O	S	0	0	0
			824	538	137	146	3			
1	E	86	Total	C	N	O	S	0	0	0
			647	425	104	115	3			
1	F	92	Total	C	N	O	S	0	0	0
			697	456	114	124	3			

There are 96 discrepancies between the modelled and reference sequences:

Chain	Residue	Modelled	Actual	Comment	Reference
A	-8	GLY	-	expression tag	UNP P0ABN1
A	-7	HIS	-	expression tag	UNP P0ABN1
A	-6	HIS	-	expression tag	UNP P0ABN1
A	-5	HIS	-	expression tag	UNP P0ABN1
A	-4	HIS	-	expression tag	UNP P0ABN1
A	-3	HIS	-	expression tag	UNP P0ABN1
A	-2	HIS	-	expression tag	UNP P0ABN1
A	-1	GLU	-	expression tag	UNP P0ABN1
A	0	LEU	-	expression tag	UNP P0ABN1
A	41	CYS	ALA	engineered mutation	UNP P0ABN1
A	46	ALA	CYS	engineered mutation	UNP P0ABN1
A	53	VAL	ILE	engineered mutation	UNP P0ABN1
A	70	LEU	ILE	engineered mutation	UNP P0ABN1
A	96	LEU	MET	engineered mutation	UNP P0ABN1
A	107	ASP	VAL	engineered mutation	UNP P0ABN1
A	113	ALA	CYS	engineered mutation	UNP P0ABN1
B	-8	GLY	-	expression tag	UNP P0ABN1

*Continued on next page...*

*Continued from previous page...*

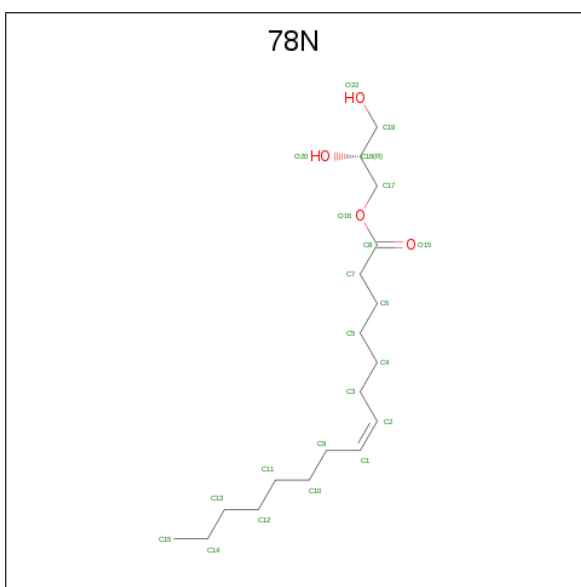
Chain	Residue	Modelled	Actual	Comment	Reference
B	-7	HIS	-	expression tag	UNP P0ABN1
B	-6	HIS	-	expression tag	UNP P0ABN1
B	-5	HIS	-	expression tag	UNP P0ABN1
B	-4	HIS	-	expression tag	UNP P0ABN1
B	-3	HIS	-	expression tag	UNP P0ABN1
B	-2	HIS	-	expression tag	UNP P0ABN1
B	-1	GLU	-	expression tag	UNP P0ABN1
B	0	LEU	-	expression tag	UNP P0ABN1
B	41	CYS	ALA	engineered mutation	UNP P0ABN1
B	46	ALA	CYS	engineered mutation	UNP P0ABN1
B	53	VAL	ILE	engineered mutation	UNP P0ABN1
B	70	LEU	ILE	engineered mutation	UNP P0ABN1
B	96	LEU	MET	engineered mutation	UNP P0ABN1
B	107	ASP	VAL	engineered mutation	UNP P0ABN1
B	113	ALA	CYS	engineered mutation	UNP P0ABN1
C	-8	GLY	-	expression tag	UNP P0ABN1
C	-7	HIS	-	expression tag	UNP P0ABN1
C	-6	HIS	-	expression tag	UNP P0ABN1
C	-5	HIS	-	expression tag	UNP P0ABN1
C	-4	HIS	-	expression tag	UNP P0ABN1
C	-3	HIS	-	expression tag	UNP P0ABN1
C	-2	HIS	-	expression tag	UNP P0ABN1
C	-1	GLU	-	expression tag	UNP P0ABN1
C	0	LEU	-	expression tag	UNP P0ABN1
C	41	CYS	ALA	engineered mutation	UNP P0ABN1
C	46	ALA	CYS	engineered mutation	UNP P0ABN1
C	53	VAL	ILE	engineered mutation	UNP P0ABN1
C	70	LEU	ILE	engineered mutation	UNP P0ABN1
C	96	LEU	MET	engineered mutation	UNP P0ABN1
C	107	ASP	VAL	engineered mutation	UNP P0ABN1
C	113	ALA	CYS	engineered mutation	UNP P0ABN1
D	-8	GLY	-	expression tag	UNP P0ABN1
D	-7	HIS	-	expression tag	UNP P0ABN1
D	-6	HIS	-	expression tag	UNP P0ABN1
D	-5	HIS	-	expression tag	UNP P0ABN1
D	-4	HIS	-	expression tag	UNP P0ABN1
D	-3	HIS	-	expression tag	UNP P0ABN1
D	-2	HIS	-	expression tag	UNP P0ABN1
D	-1	GLU	-	expression tag	UNP P0ABN1
D	0	LEU	-	expression tag	UNP P0ABN1
D	41	CYS	ALA	engineered mutation	UNP P0ABN1
D	46	ALA	CYS	engineered mutation	UNP P0ABN1

*Continued on next page...*

*Continued from previous page...*

Chain	Residue	Modelled	Actual	Comment	Reference
D	53	VAL	ILE	engineered mutation	UNP P0ABN1
D	70	LEU	ILE	engineered mutation	UNP P0ABN1
D	96	LEU	MET	engineered mutation	UNP P0ABN1
D	107	ASP	VAL	engineered mutation	UNP P0ABN1
D	113	ALA	CYS	engineered mutation	UNP P0ABN1
E	-8	GLY	-	expression tag	UNP P0ABN1
E	-7	HIS	-	expression tag	UNP P0ABN1
E	-6	HIS	-	expression tag	UNP P0ABN1
E	-5	HIS	-	expression tag	UNP P0ABN1
E	-4	HIS	-	expression tag	UNP P0ABN1
E	-3	HIS	-	expression tag	UNP P0ABN1
E	-2	HIS	-	expression tag	UNP P0ABN1
E	-1	GLU	-	expression tag	UNP P0ABN1
E	0	LEU	-	expression tag	UNP P0ABN1
E	41	CYS	ALA	engineered mutation	UNP P0ABN1
E	46	ALA	CYS	engineered mutation	UNP P0ABN1
E	53	VAL	ILE	engineered mutation	UNP P0ABN1
E	70	LEU	ILE	engineered mutation	UNP P0ABN1
E	96	LEU	MET	engineered mutation	UNP P0ABN1
E	107	ASP	VAL	engineered mutation	UNP P0ABN1
E	113	ALA	CYS	engineered mutation	UNP P0ABN1
F	-8	GLY	-	expression tag	UNP P0ABN1
F	-7	HIS	-	expression tag	UNP P0ABN1
F	-6	HIS	-	expression tag	UNP P0ABN1
F	-5	HIS	-	expression tag	UNP P0ABN1
F	-4	HIS	-	expression tag	UNP P0ABN1
F	-3	HIS	-	expression tag	UNP P0ABN1
F	-2	HIS	-	expression tag	UNP P0ABN1
F	-1	GLU	-	expression tag	UNP P0ABN1
F	0	LEU	-	expression tag	UNP P0ABN1
F	41	CYS	ALA	engineered mutation	UNP P0ABN1
F	46	ALA	CYS	engineered mutation	UNP P0ABN1
F	53	VAL	ILE	engineered mutation	UNP P0ABN1
F	70	LEU	ILE	engineered mutation	UNP P0ABN1
F	96	LEU	MET	engineered mutation	UNP P0ABN1
F	107	ASP	VAL	engineered mutation	UNP P0ABN1
F	113	ALA	CYS	engineered mutation	UNP P0ABN1

- Molecule 2 is (2R)-2,3-DIHYDROXYPROPYL(7Z)-PENTADEC-7-ENOATE (three-letter code: 78N) (formula: C<sub>18</sub>H<sub>34</sub>O<sub>4</sub>).

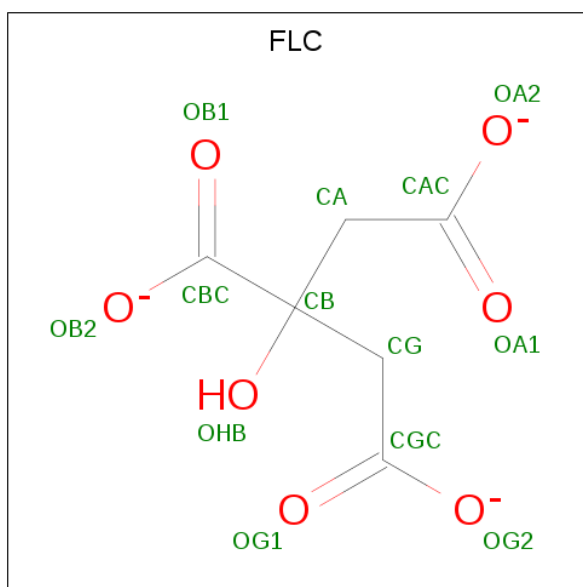


Mol	Chain	Residues	Atoms			ZeroOcc	AltConf
2	A	1	Total	C	O	0	0
			22	18	4		
2	A	1	Total	C	O	0	0
			22	18	4		
2	A	1	Total	C	O	0	0
			22	18	4		
2	A	1	Total	C	O	0	0
			22	18	4		
2	A	1	Total	C	O	0	0
			22	18	4		
2	B	1	Total	C	O	0	0
			22	18	4		
2	B	1	Total	C	O	0	0
			22	18	4		
2	C	1	Total	C	O	0	0
			22	18	4		
2	D	1	Total	C	O	0	0
			22	18	4		
2	D	1	Total	C	O	0	0
			22	18	4		

- Molecule 3 is ZINC ION (three-letter code: ZN) (formula: Zn).

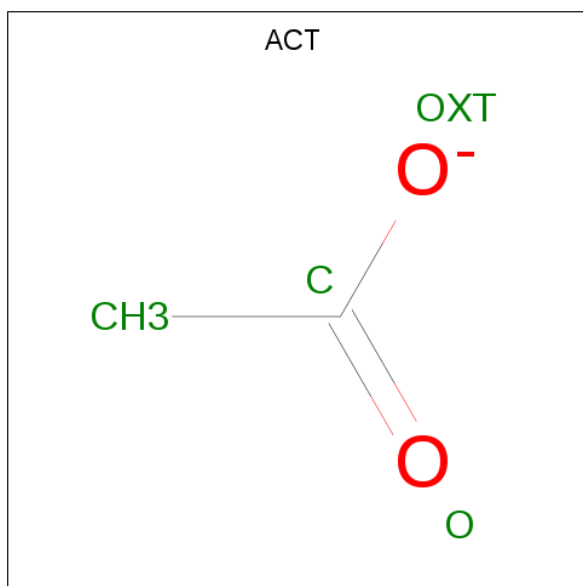
Mol	Chain	Residues	Atoms		ZeroOcc	AltConf
3	D	1	Total	Zn	0	0
			1	1		

- Molecule 4 is CITRATE ANION (three-letter code: FLC) (formula: C<sub>6</sub>H<sub>5</sub>O<sub>7</sub>).



Mol	Chain	Residues	Atoms			ZeroOcc	AltConf
4	D	1	Total	C	O	0	0
			13	6	7		

- Molecule 5 is ACETATE ION (three-letter code: ACT) (formula:  $C_2H_3O_2$ ).



Mol	Chain	Residues	Atoms			ZeroOcc	AltConf
5	D	1	Total	C	O	0	0
			4	2	2		

- Molecule 6 is water.

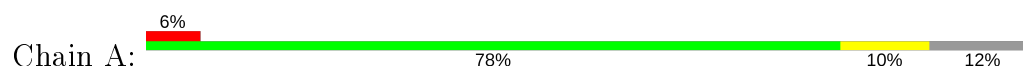


Mol	Chain	Residues	Atoms		ZeroOcc	AltConf
6	A	6	Total 6	O 6	0	0
6	B	4	Total 4	O 4	0	0
6	D	4	Total 4	O 4	0	0
6	E	5	Total 5	O 5	0	0
6	F	2	Total 2	O 2	0	0

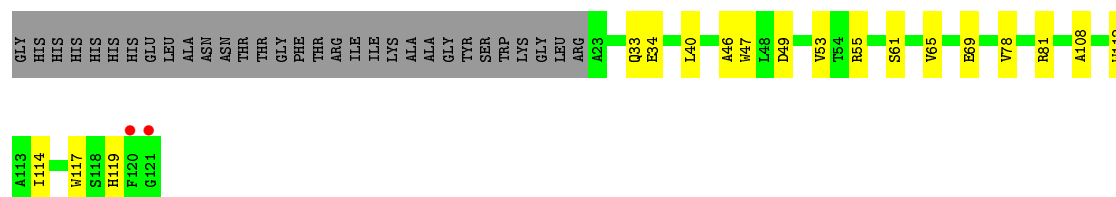
### 3 Residue-property plots [i](#)

These plots are drawn for all protein, RNA and DNA chains in the entry. The first graphic for a chain summarises the proportions of the various outlier classes displayed in the second graphic. The second graphic shows the sequence view annotated by issues in geometry and electron density. Residues are color-coded according to the number of geometric quality criteria for which they contain at least one outlier: green = 0, yellow = 1, orange = 2 and red = 3 or more. A red dot above a residue indicates a poor fit to the electron density ( $RSRZ > 2$ ). Stretches of 2 or more consecutive residues without any outlier are shown as a green connector. Residues present in the sample, but not in the model, are shown in grey.

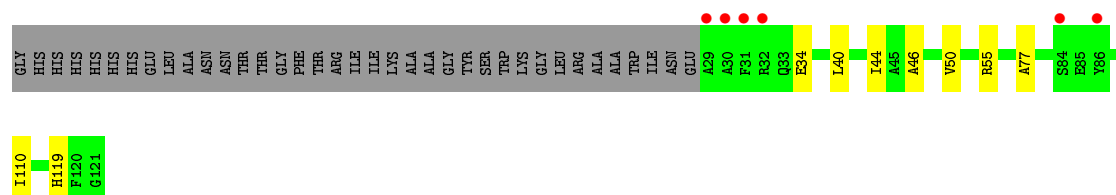
#### • Molecule 1: DIACYLGLYCEROL KINASE



#### • Molecule 1: DIACYLGLYCEROL KINASE



#### • Molecule 1: DIACYLGLYCEROL KINASE

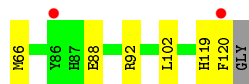
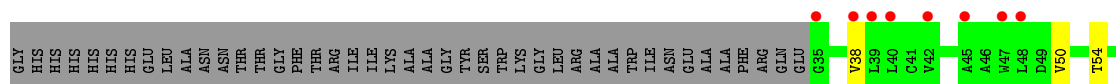


#### • Molecule 1: DIACYLGLYCEROL KINASE



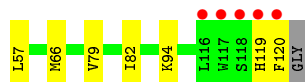
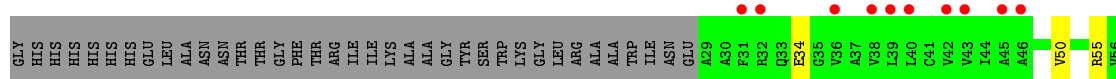
#### • Molecule 1: DIACYLGLYCEROL KINASE





- Molecule 1: DIACYLGLYCEROL KINASE

Chain F: 



## 4 Data and refinement statistics

Property	Value	Source
Space group	P 21 21 21	Depositor
Cell constants a, b, c, $\alpha$ , $\beta$ , $\gamma$	75.50 Å 91.57 Å 143.57 Å 90.00° 90.00° 90.00°	Depositor
Resolution (Å)	45.23 – 2.55 45.23 – 2.55	Depositor EDS
% Data completeness (in resolution range)	98.0 (45.23-2.55) 98.1 (45.23-2.55)	Depositor EDS
$R_{merge}$	0.12	Depositor
$R_{sym}$	(Not available)	Depositor
$\langle I/\sigma(I) \rangle$ <sup>1</sup>	1.60 (at 2.54 Å)	Xtriage
Refinement program	PHENIX (PHENIX.REFINE)	Depositor
R, $R_{free}$	0.217 , 0.261 0.225 , 0.266	Depositor DCC
$R_{free}$ test set	1638 reflections (5.03%)	wwPDB-VP
Wilson B-factor (Å <sup>2</sup> )	56.0	Xtriage
Anisotropy	0.197	Xtriage
Bulk solvent $k_{sol}$ (e/Å <sup>3</sup> ), $B_{sol}$ (Å <sup>2</sup> )	0.32 , 80.5	EDS
L-test for twinning <sup>2</sup>	$\langle  L  \rangle = 0.49$ , $\langle L^2 \rangle = 0.32$	Xtriage
Estimated twinning fraction	No twinning to report.	Xtriage
$F_o, F_c$ correlation	0.93	EDS
Total number of atoms	4762	wwPDB-VP
Average B, all atoms (Å <sup>2</sup> )	66.0	wwPDB-VP

Xtriage's analysis on translational NCS is as follows: *The largest off-origin peak in the Patterson function is 4.79% of the height of the origin peak. No significant pseudotranslation is detected.*

<sup>1</sup>Intensities estimated from amplitudes.

<sup>2</sup>Theoretical values of  $\langle |L| \rangle$ ,  $\langle L^2 \rangle$  for acentric reflections are 0.5, 0.333 respectively for untwinned datasets, and 0.375, 0.2 for perfectly twinned datasets.

## 5 Model quality [i](#)

### 5.1 Standard geometry [i](#)

Bond lengths and bond angles in the following residue types are not validated in this section: ZN, 78N, FLC, ACT

The Z score for a bond length (or angle) is the number of standard deviations the observed value is removed from the expected value. A bond length (or angle) with  $|Z| > 5$  is considered an outlier worth inspection. RMSZ is the root-mean-square of all Z scores of the bond lengths (or angles).

Mol	Chain	Bond lengths		Bond angles	
		RMSZ	# Z  >5	RMSZ	# Z  >5
1	A	0.44	0/898	0.55	0/1224
1	B	0.43	0/763	0.54	0/1042
1	C	0.40	0/712	0.51	0/971
1	D	0.47	0/839	0.54	0/1144
1	E	0.38	0/656	0.49	0/898
1	F	0.39	0/707	0.50	0/966
All	All	0.43	0/4575	0.53	0/6245

There are no bond length outliers.

There are no bond angle outliers.

There are no chirality outliers.

There are no planarity outliers.

### 5.2 Too-close contacts [i](#)

In the following table, the Non-H and H(model) columns list the number of non-hydrogen atoms and hydrogen atoms in the chain respectively. The H(added) column lists the number of hydrogen atoms added and optimized by MolProbity. The Clashes column lists the number of clashes within the asymmetric unit, whereas Symm-Clashes lists symmetry related clashes.

Mol	Chain	Non-H	H(model)	H(added)	Clashes	Symm-Clashes
1	A	882	0	919	9	0
1	B	751	0	778	17	0
1	C	702	0	735	7	0
1	D	824	0	850	11	0
1	E	647	0	686	7	0
1	F	697	0	732	6	0
2	A	110	0	170	7	0

*Continued on next page...*

*Continued from previous page...*

Mol	Chain	Non-H	H(model)	H(added)	Clashes	Symm-Clashes
2	B	44	0	68	10	0
2	C	22	0	34	0	0
2	D	44	0	68	2	0
3	D	1	0	0	0	0
4	D	13	0	5	0	0
5	D	4	0	3	0	0
6	A	6	0	0	0	0
6	B	4	0	0	0	0
6	D	4	0	0	0	0
6	E	5	0	0	0	0
6	F	2	0	0	0	0
All	All	4762	0	5048	53	0

The all-atom clashscore is defined as the number of clashes found per 1000 atoms (including hydrogen atoms). The all-atom clashscore for this structure is 5.

All (53) close contacts within the same asymmetric unit are listed below, sorted by their clash magnitude.

Atom-1	Atom-2	Interatomic distance (Å)	Clash overlap (Å)
1:B:49:ASP:HB2	2:D:1126:78N:H172	1.61	0.82
2:A:1124:78N:H42C	1:B:114:ILE:HD11	1.74	0.70
2:B:1122:78N:H72	1:D:33:GLN:HG3	1.84	0.60
1:F:79:VAL:HG11	1:F:94:LYS:HE2	1.87	0.57
1:D:81:ARG:CZ	1:E:88:GLU:HB3	2.37	0.54
1:F:34:GLU:HB3	1:F:66:MET:HE1	1.89	0.54
1:A:7:PHE:HB2	1:A:10:ILE:HD12	1.88	0.54
1:A:8:THR:OG1	1:A:9:ARG:NH1	2.40	0.54
2:B:1122:78N:H2	1:C:110:ILE:HG23	1.90	0.54
2:B:1122:78N:H153	1:D:43:VAL:HG21	1.91	0.52
1:A:105:ILE:O	1:A:109:VAL:HG23	2.10	0.52
1:C:50:VAL:O	1:C:55:ARG:NH2	2.42	0.51
1:C:40:LEU:O	1:C:44:ILE:HG12	2.10	0.51
1:F:50:VAL:O	1:F:55:ARG:NH2	2.44	0.50
1:D:110:ILE:HG12	2:D:1126:78N:H121	1.94	0.50
1:D:85:GLU:CD	1:D:85:GLU:H	2.13	0.50
1:B:61:SER:HB2	1:B:108:ALA:HA	1.93	0.50
1:E:119:HIS:HD1	1:E:120:PHE:HD1	1.58	0.50
1:B:78:VAL:O	1:B:81:ARG:HB3	2.13	0.48
1:E:50:VAL:HG13	1:E:54:THR:HB	1.95	0.48
1:A:92:ARG:HH11	1:C:77:ALA:HB2	1.78	0.48
1:A:55:ARG:NH2	2:A:1124:78N:H171	2.29	0.47

*Continued on next page...*

*Continued from previous page...*

Atom-1	Atom-2	Interatomic distance (Å)	Clash overlap (Å)
1:B:55:ARG:NH1	2:B:1122:78N:H18	2.29	0.47
1:A:40:LEU:HD23	2:A:1123:78N:H1	1.97	0.47
1:A:53:VAL:HG11	1:B:53:VAL:HG23	1.97	0.47
2:A:1125:78N:H42C	1:B:117:TRP:CD2	2.51	0.46
1:A:66:MET:HG2	2:A:1122:78N:H1	1.97	0.46
1:B:47:TRP:HZ3	1:D:34:GLU:HG2	1.81	0.46
1:C:34:GLU:OE1	1:C:34:GLU:N	2.50	0.45
2:A:1122:78N:H18	2:A:1123:78N:H192	1.97	0.45
2:B:1122:78N:H132	1:D:39:LEU:HD12	1.99	0.45
1:B:46:ALA:O	2:B:1122:78N:H61C	2.17	0.44
1:E:38:VAL:HG21	1:E:66:MET:SD	2.58	0.44
1:B:40:LEU:HD23	1:B:40:LEU:HA	1.88	0.43
2:A:1124:78N:H2	2:A:1124:78N:H52C	1.68	0.43
1:A:35:GLY:O	1:A:39:LEU:HG	2.20	0.42
1:F:119:HIS:ND1	1:F:120:PHE:HD1	2.18	0.42
1:B:34:GLU:HA	2:B:1123:78N:H72	2.02	0.41
1:D:82:ILE:HD11	1:F:82:ILE:HD13	2.03	0.41
1:E:50:VAL:CG1	1:E:54:THR:HB	2.50	0.41
1:B:119:HIS:CG	1:B:119:HIS:O	2.74	0.41
1:B:34:GLU:OE2	2:B:1123:78N:H18	2.20	0.41
1:F:57:LEU:HA	1:F:57:LEU:HD23	1.84	0.41
1:C:46:ALA:HA	1:C:55:ARG:NH1	2.36	0.41
1:D:17:SER:HB3	1:E:102:LEU:HD22	2.02	0.41
1:D:81:ARG:HA	1:D:81:ARG:HD2	1.81	0.41
1:B:119:HIS:ND1	1:B:119:HIS:O	2.54	0.40
1:B:65:VAL:O	1:B:69:GLU:HG3	2.21	0.40
1:E:92:ARG:HB2	1:E:92:ARG:HE	1.74	0.40
1:B:33:GLN:OE1	2:B:1123:78N:O20	2.38	0.40
1:B:112:TRP:CD2	2:B:1123:78N:H112	2.56	0.40
1:C:50:VAL:HG12	1:C:119:HIS:CD2	2.57	0.40
1:D:72:ASN:OD1	1:D:97:GLY:HA3	2.22	0.40

There are no symmetry-related clashes.

## 5.3 Torsion angles [i](#)

### 5.3.1 Protein backbone [i](#)

In the following table, the Percentiles column shows the percent Ramachandran outliers of the chain as a percentile score with respect to all X-ray entries followed by that with respect to entries of similar resolution.

The Analysed column shows the number of residues for which the backbone conformation was analysed, and the total number of residues.

Mol	Chain	Analysed	Favoured	Allowed	Outliers	Percentiles	
1	A	113/130 (87%)	111 (98%)	2 (2%)	0	100	100
1	B	97/130 (75%)	96 (99%)	1 (1%)	0	100	100
1	C	91/130 (70%)	91 (100%)	0	0	100	100
1	D	106/130 (82%)	104 (98%)	2 (2%)	0	100	100
1	E	84/130 (65%)	81 (96%)	3 (4%)	0	100	100
1	F	90/130 (69%)	89 (99%)	1 (1%)	0	100	100
All	All	581/780 (74%)	572 (98%)	9 (2%)	0	100	100

There are no Ramachandran outliers to report.

### 5.3.2 Protein sidechains ⓘ

In the following table, the Percentiles column shows the percent sidechain outliers of the chain as a percentile score with respect to all X-ray entries followed by that with respect to entries of similar resolution.

The Analysed column shows the number of residues for which the sidechain conformation was analysed, and the total number of residues.

Mol	Chain	Analysed	Rotameric	Outliers	Percentiles	
1	A	90/102 (88%)	90 (100%)	0	100	100
1	B	78/102 (76%)	78 (100%)	0	100	100
1	C	74/102 (72%)	74 (100%)	0	100	100
1	D	84/102 (82%)	84 (100%)	0	100	100
1	E	70/102 (69%)	70 (100%)	0	100	100
1	F	74/102 (72%)	74 (100%)	0	100	100
All	All	470/612 (77%)	470 (100%)	0	100	100

There are no protein residues with a non-rotameric sidechain to report.

Some sidechains can be flipped to improve hydrogen bonding and reduce clashes. There are no such sidechains identified.

### 5.3.3 RNA ⓘ

There are no RNA molecules in this entry.



## 5.4 Non-standard residues in protein, DNA, RNA chains [i](#)

There are no non-standard protein/DNA/RNA residues in this entry.

## 5.5 Carbohydrates [i](#)

There are no carbohydrates in this entry.

## 5.6 Ligand geometry [i](#)

Of 13 ligands modelled in this entry, 1 is monoatomic - leaving 12 for Mogul analysis.

In the following table, the Counts columns list the number of bonds (or angles) for which Mogul statistics could be retrieved, the number of bonds (or angles) that are observed in the model and the number of bonds (or angles) that are defined in the Chemical Component Dictionary. The Link column lists molecule types, if any, to which the group is linked. The Z score for a bond length (or angle) is the number of standard deviations the observed value is removed from the expected value. A bond length (or angle) with  $|Z| > 2$  is considered an outlier worth inspection. RMSZ is the root-mean-square of all Z scores of the bond lengths (or angles).

Mol	Type	Chain	Res	Link	Bond lengths			Bond angles		
					Counts	RMSZ	# Z  > 2	Counts	RMSZ	# Z  > 2
2	78N	C	1122	-	21,21,21	0.22	0	22,22,22	0.37	0
2	78N	A	1121	-	21,21,21	0.27	0	22,22,22	0.40	0
5	ACT	D	1124	3	1,3,3	0.69	0	0,3,3	0.00	-
2	78N	B	1123	-	21,21,21	0.25	0	22,22,22	0.34	0
2	78N	A	1122	-	21,21,21	0.23	0	22,22,22	0.30	0
4	FLC	D	1123	3	3,12,12	3.46	3 (100%)	3,17,17	2.21	2 (66%)
2	78N	A	1123	-	21,21,21	0.21	0	22,22,22	0.46	0
2	78N	D	1125	-	21,21,21	0.21	0	22,22,22	0.42	0
2	78N	B	1122	-	21,21,21	0.25	0	22,22,22	0.21	0
2	78N	A	1124	-	21,21,21	0.21	0	22,22,22	0.37	0
2	78N	D	1126	-	21,21,21	0.29	0	22,22,22	0.60	1 (4%)
2	78N	A	1125	-	21,21,21	0.25	0	22,22,22	0.41	0

In the following table, the Chirals column lists the number of chiral outliers, the number of chiral centers analysed, the number of these observed in the model and the number defined in the Chemical Component Dictionary. Similar counts are reported in the Torsion and Rings columns. '-' means no outliers of that kind were identified.

Mol	Type	Chain	Res	Link	Chirals	Torsions	Rings
2	78N	C	1122	-	-	1/21/21/21	-
2	78N	A	1121	-	-	5/21/21/21	-

*Continued on next page...*

*Continued from previous page...*

Mol	Type	Chain	Res	Link	Chirals	Torsions	Rings
2	78N	B	1123	-	-	6/21/21/21	-
2	78N	A	1122	-	-	3/21/21/21	-
4	FLC	D	1123	3	-	1/6/16/16	-
2	78N	A	1123	-	-	4/21/21/21	-
2	78N	D	1125	-	-	9/21/21/21	-
2	78N	B	1122	-	-	6/21/21/21	-
2	78N	A	1124	-	-	3/21/21/21	-
2	78N	D	1126	-	-	3/21/21/21	-
2	78N	A	1125	-	-	5/21/21/21	-

All (3) bond length outliers are listed below:

Mol	Chain	Res	Type	Atoms	Z	Observed(Å)	Ideal(Å)
4	D	1123	FLC	CA-CB	-3.48	1.50	1.54
4	D	1123	FLC	OHB-CB	-3.45	1.37	1.43
4	D	1123	FLC	CG-CB	-3.44	1.50	1.54

All (3) bond angle outliers are listed below:

Mol	Chain	Res	Type	Atoms	Z	Observed(°)	Ideal(°)
4	D	1123	FLC	CB-CA-CAC	2.89	119.62	114.98
4	D	1123	FLC	CB-CG-CGC	2.52	119.01	114.98
2	D	1126	78N	O16-C17-C18	2.28	116.78	105.77

There are no chirality outliers.

All (46) torsion outliers are listed below:

Mol	Chain	Res	Type	Atoms
2	A	1121	78N	O16-C17-C18-O20
2	A	1122	78N	O16-C17-C18-C19
2	D	1125	78N	C17-C18-C19-O22
2	D	1125	78N	O16-C17-C18-O20
2	A	1125	78N	O16-C17-C18-C19
2	A	1125	78N	O16-C17-C18-O20
2	A	1123	78N	O16-C17-C18-O20
2	A	1124	78N	O16-C17-C18-C19
2	A	1122	78N	O16-C17-C18-O20
2	D	1126	78N	C5-C6-C7-C8
2	A	1124	78N	O16-C17-C18-O20

*Continued on next page...*

*Continued from previous page...*

Mol	Chain	Res	Type	Atoms
2	B	1122	78N	C9-C10-C11-C12
2	D	1125	78N	C9-C10-C11-C12
2	B	1122	78N	C4-C5-C6-C7
2	A	1123	78N	C17-C18-C19-O22
2	B	1122	78N	C17-C18-C19-O22
2	A	1121	78N	C4-C5-C6-C7
2	B	1123	78N	C2-C3-C4-C5
2	D	1126	78N	C4-C5-C6-C7
2	A	1121	78N	O16-C17-C18-C19
2	D	1125	78N	O16-C17-C18-C19
2	B	1122	78N	C11-C10-C9-C1
2	D	1126	78N	C11-C10-C9-C1
2	A	1125	78N	C11-C10-C9-C1
2	A	1124	78N	C4-C5-C6-C7
2	C	1122	78N	C5-C6-C7-C8
2	A	1121	78N	C12-C13-C14-C15
2	D	1125	78N	O20-C18-C19-O22
2	A	1125	78N	C3-C4-C5-C6
2	B	1123	78N	C5-C6-C7-C8
2	D	1125	78N	C3-C4-C5-C6
2	A	1121	78N	C2-C3-C4-C5
4	D	1123	FLC	CAC-CA-CB-CBC
2	B	1122	78N	O20-C18-C19-O22
2	D	1125	78N	C2-C1-C9-C10
2	A	1122	78N	C2-C1-C9-C10
2	B	1122	78N	C10-C11-C12-C13
2	B	1123	78N	C1-C2-C3-C4
2	B	1123	78N	O16-C17-C18-O20
2	D	1125	78N	C6-C7-C8-O16
2	B	1123	78N	C3-C4-C5-C6
2	B	1123	78N	C2-C1-C9-C10
2	A	1125	78N	C1-C2-C3-C4
2	A	1123	78N	C1-C2-C3-C4
2	A	1123	78N	C2-C1-C9-C10
2	D	1125	78N	C6-C7-C8-O15

There are no ring outliers.

7 monomers are involved in 19 short contacts:

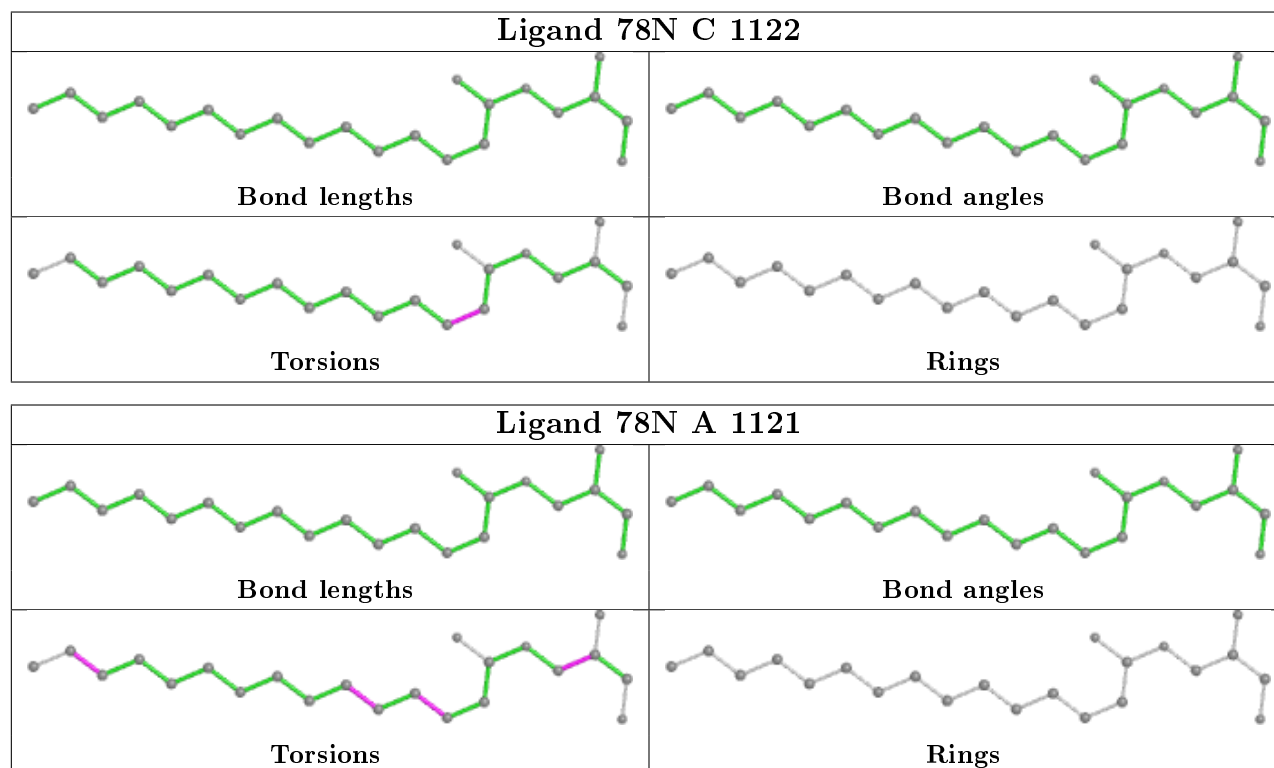
Mol	Chain	Res	Type	Clashes	Symm-Clashes
2	B	1123	78N	4	0
2	A	1122	78N	2	0

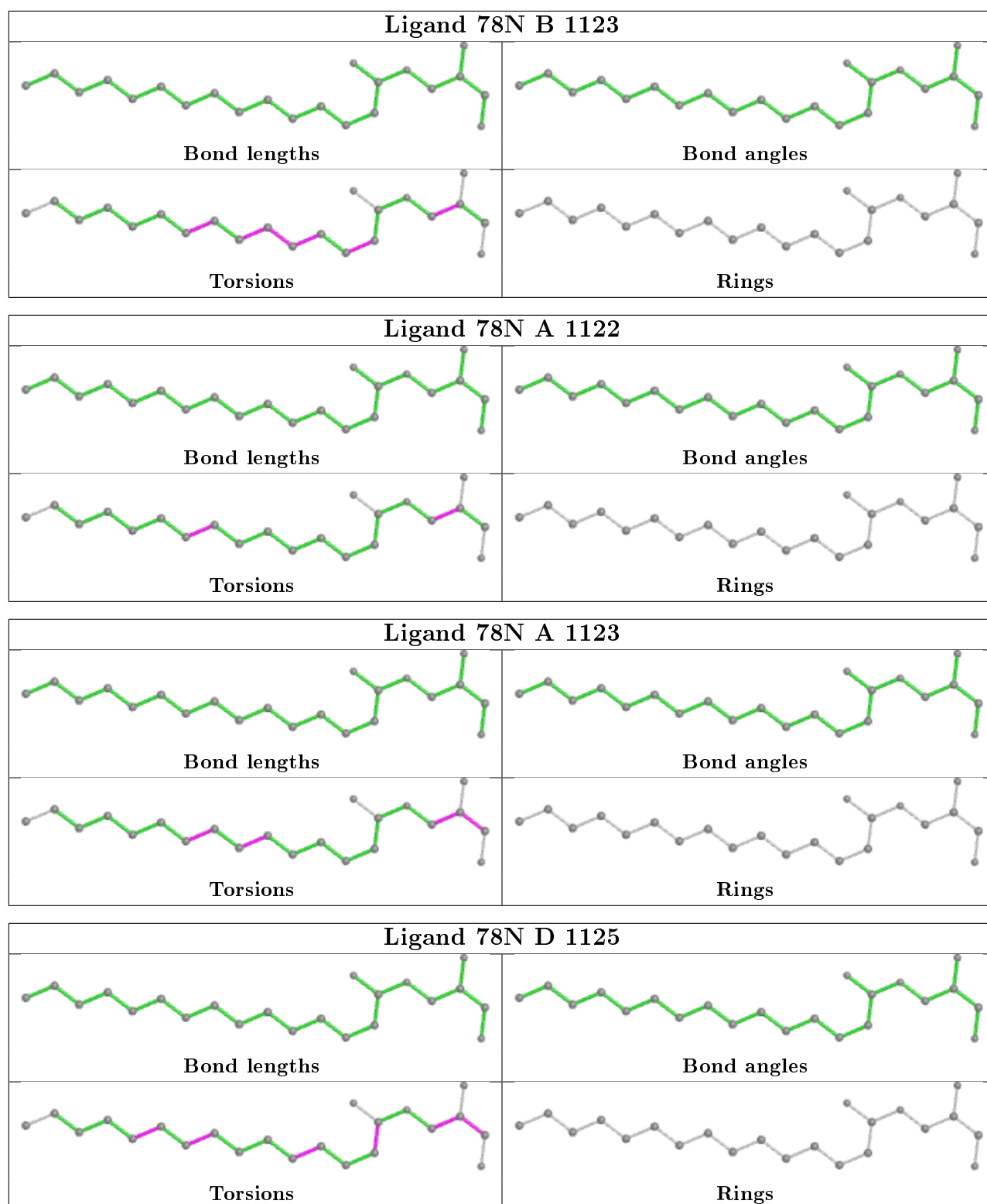
*Continued on next page...*

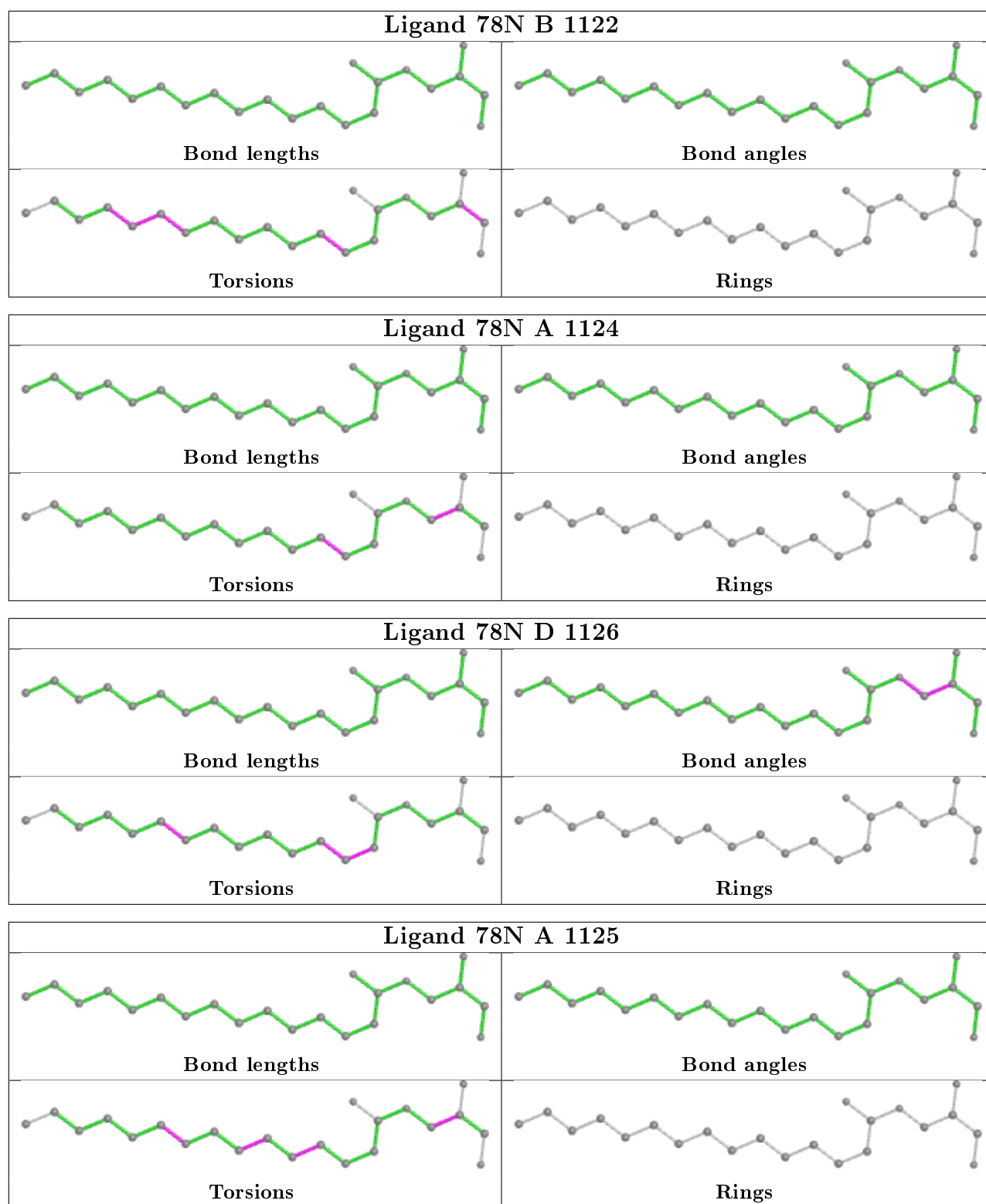
*Continued from previous page...*

Mol	Chain	Res	Type	Clashes	Symm-Clashes
2	A	1123	78N	2	0
2	B	1122	78N	6	0
2	A	1124	78N	3	0
2	D	1126	78N	2	0
2	A	1125	78N	1	0

The following is a two-dimensional graphical depiction of Mogul quality analysis of bond lengths, bond angles, torsion angles, and ring geometry for all instances of the Ligand of Interest. In addition, ligands with molecular weight > 250 and outliers as shown on the validation Tables will also be included. For torsion angles, if less than 5% of the Mogul distribution of torsion angles is within 10 degrees of the torsion angle in question, then that torsion angle is considered an outlier. Any bond that is central to one or more torsion angles identified as an outlier by Mogul will be highlighted in the graph. For rings, the root-mean-square deviation (RMSD) between the ring in question and similar rings identified by Mogul is calculated over all ring torsion angles. If the average RMSD is greater than 60 degrees and the minimal RMSD between the ring in question and any Mogul-identified rings is also greater than 60 degrees, then that ring is considered an outlier. The outliers are highlighted in purple. The color gray indicates Mogul did not find sufficient equivalents in the CSD to analyse the geometry.







## 5.7 Other polymers [i](#)

There are no such residues in this entry.

## 5.8 Polymer linkage issues ⓘ

There are no chain breaks in this entry.

## 6 Fit of model and data

### 6.1 Protein, DNA and RNA chains

In the following table, the column labelled ‘#RSRZ> 2’ contains the number (and percentage) of RSRZ outliers, followed by percent RSRZ outliers for the chain as percentile scores relative to all X-ray entries and entries of similar resolution. The OWAB column contains the minimum, median, 95<sup>th</sup> percentile and maximum values of the occupancy-weighted average B-factor per residue. The column labelled ‘Q< 0.9’ lists the number of (and percentage) of residues with an average occupancy less than 0.9.

Mol	Chain	Analysed	<RSRZ>	#RSRZ>2	OWAB(Å <sup>2</sup> )	Q<0.9
1	A	115/130 (88%)	0.31	8 (6%) 16 19	30, 50, 114, 171	0
1	B	99/130 (76%)	0.02	2 (2%) 65 72	30, 45, 113, 163	0
1	C	93/130 (71%)	0.17	6 (6%) 18 22	29, 52, 113, 167	0
1	D	108/130 (83%)	0.02	0 100 100	32, 49, 88, 109	0
1	E	86/130 (66%)	0.54	10 (11%) 4 6	29, 67, 168, 186	0
1	F	92/130 (70%)	0.52	15 (16%) 1 1	33, 61, 144, 175	0
All	All	593/780 (76%)	0.25	41 (6%) 16 20	29, 53, 134, 186	0

All (41) RSRZ outliers are listed below:

Mol	Chain	Res	Type	RSRZ
1	A	86	TYR	8.2
1	B	121	GLY	6.6
1	C	31	PHE	6.5
1	E	47	TRP	6.1
1	F	120	PHE	6.0
1	F	118	SER	6.0
1	E	48	LEU	5.1
1	F	119	HIS	4.6
1	F	117	TRP	4.4
1	F	43	VAL	4.1
1	E	45	ALA	3.8
1	C	84	SER	3.5
1	F	38	VAL	3.4
1	F	31	PHE	3.2
1	E	42	VAL	3.2
1	F	36	VAL	3.2
1	C	86	TYR	3.0
1	F	39	LEU	3.0
1	A	9	ARG	3.0

*Continued on next page...*



*Continued from previous page...*

Mol	Chain	Res	Type	RSRZ
1	C	30	ALA	2.9
1	A	12	LYS	2.8
1	C	32	ARG	2.8
1	F	40	LEU	2.7
1	E	86	TYR	2.7
1	B	120	PHE	2.6
1	F	45	ALA	2.6
1	F	46	ALA	2.5
1	E	35	GLY	2.5
1	A	109	VAL	2.3
1	E	38	VAL	2.3
1	F	42	VAL	2.3
1	E	39	LEU	2.3
1	A	108	ALA	2.3
1	A	11	ILE	2.2
1	A	88	GLU	2.2
1	E	40	LEU	2.2
1	E	120	PHE	2.1
1	C	29	ALA	2.1
1	A	119	HIS	2.1
1	F	32	ARG	2.0
1	F	116	LEU	2.0

## 6.2 Non-standard residues in protein, DNA, RNA chains [i](#)

There are no non-standard protein/DNA/RNA residues in this entry.

## 6.3 Carbohydrates [i](#)

There are no carbohydrates in this entry.

## 6.4 Ligands [i](#)

In the following table, the Atoms column lists the number of modelled atoms in the group and the number defined in the chemical component dictionary. The B-factors column lists the minimum, median, 95<sup>th</sup> percentile and maximum values of B factors of atoms in the group. The column labelled 'Q< 0.9' lists the number of atoms with occupancy less than 0.9.

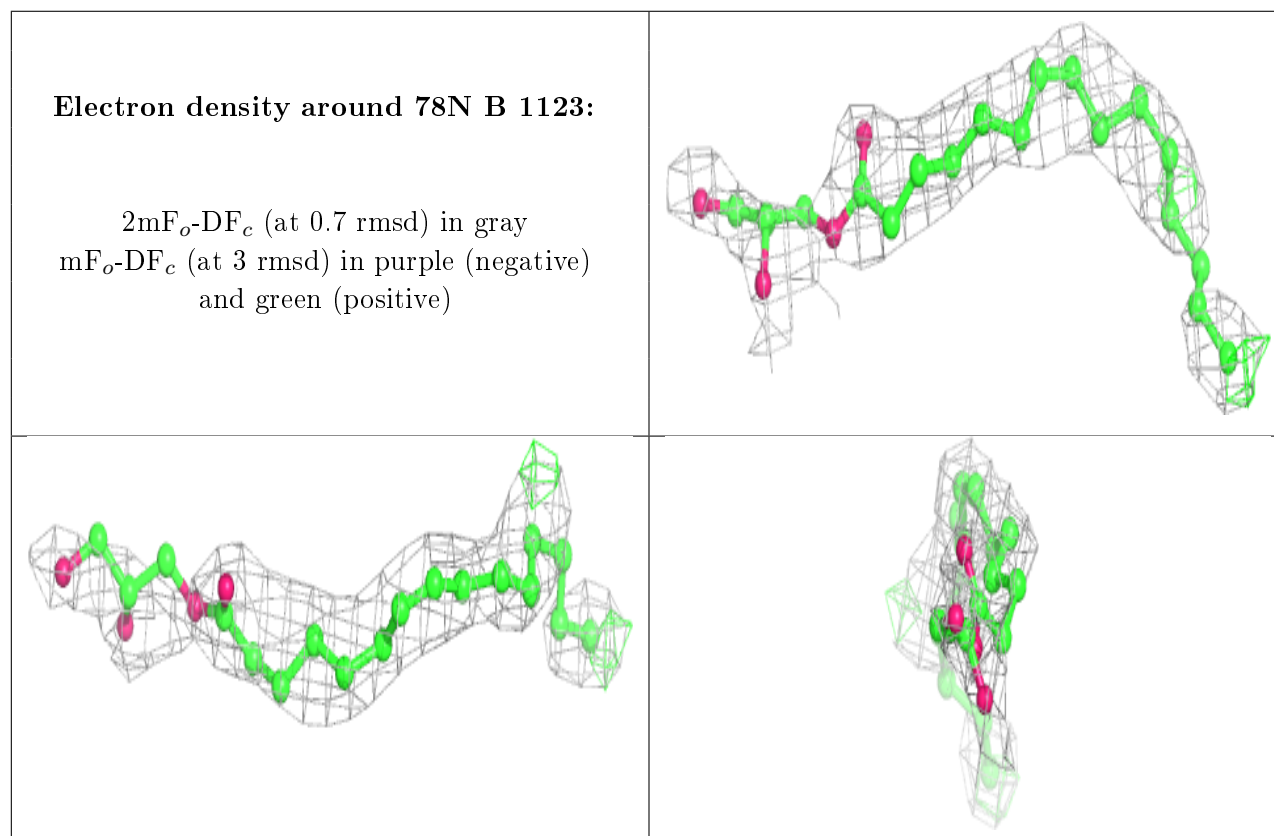
Mol	Type	Chain	Res	Atoms	RSCC	RSR	B-factors( $\text{\AA}^2$ )	Q<0.9
2	78N	B	1123	22/22	0.62	0.31	61,86,110,111	0

*Continued on next page...*

Continued from previous page...

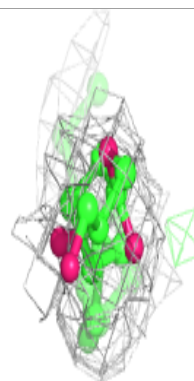
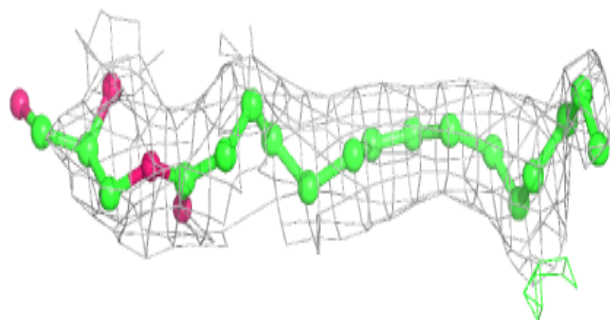
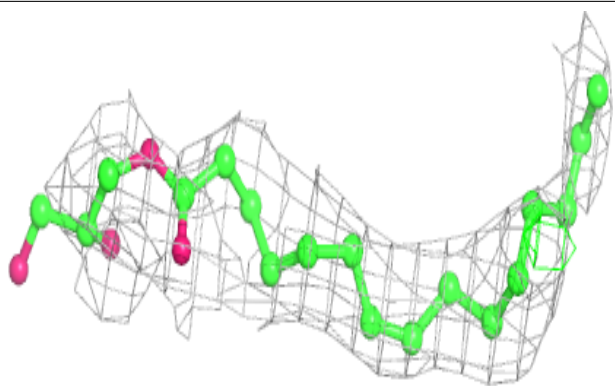
Mol	Type	Chain	Res	Atoms	RSCC	RSR	B-factors( $\text{\AA}^2$ )	Q<0.9
2	78N	A	1125	22/22	0.67	0.31	70,79,114,114	0
2	78N	C	1122	22/22	0.71	0.60	1,19,90,97	0
2	78N	D	1126	22/22	0.72	0.37	72,86,100,103	0
2	78N	D	1125	22/22	0.74	0.30	48,84,103,109	0
2	78N	A	1123	22/22	0.76	0.41	61,89,94,98	0
2	78N	B	1122	22/22	0.81	0.34	57,79,103,103	0
2	78N	A	1124	22/22	0.81	0.32	83,88,97,98	0
2	78N	A	1121	22/22	0.84	0.30	54,64,80,90	0
4	FLC	D	1123	13/13	0.84	0.24	71,95,109,110	0
2	78N	A	1122	22/22	0.88	0.31	66,83,94,99	0
5	ACT	D	1124	4/4	0.97	0.15	56,60,62,65	0
3	ZN	D	1122	1/1	0.99	0.05	40,40,40,40	1

The following is a graphical depiction of the model fit to experimental electron density of all instances of the Ligand of Interest. In addition, ligands with molecular weight > 250 and outliers as shown on the geometry validation Tables will also be included. Each fit is shown from different orientation to approximate a three-dimensional view.

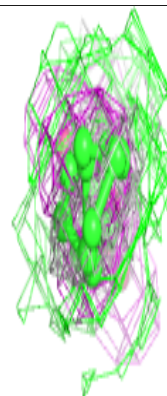
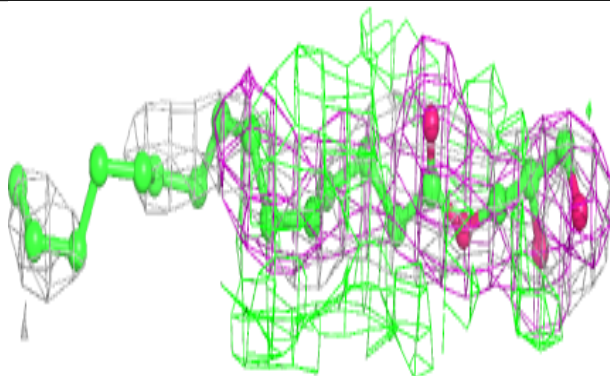
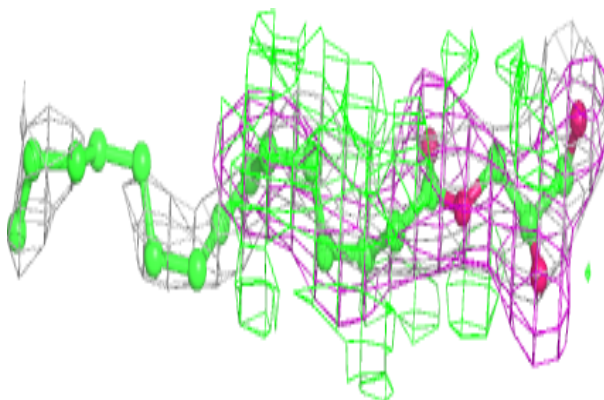


**Electron density around 78N A 1125:**

$2mF_o-DF_c$  (at 0.7 rmsd) in gray  
 $mF_o-DF_c$  (at 3 rmsd) in purple (negative)  
and green (positive)

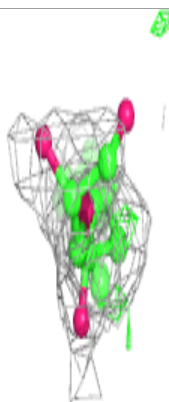
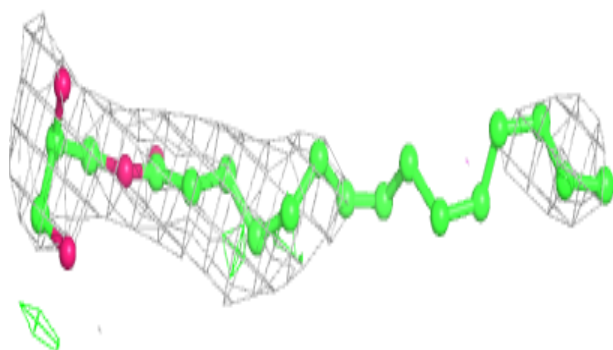
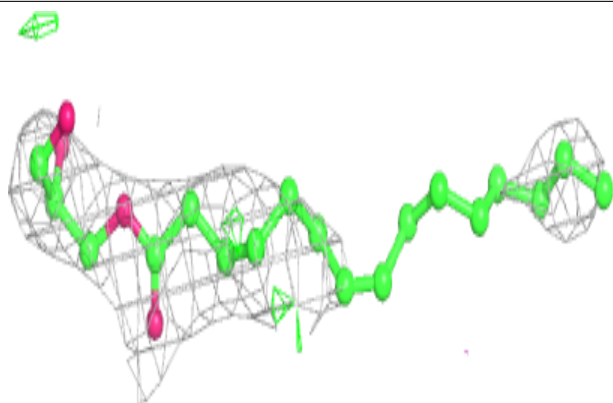
**Electron density around 78N C 1122:**

$2mF_o-DF_c$  (at 0.7 rmsd) in gray  
 $mF_o-DF_c$  (at 3 rmsd) in purple (negative)  
and green (positive)

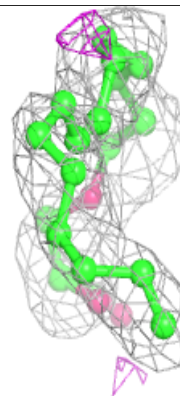
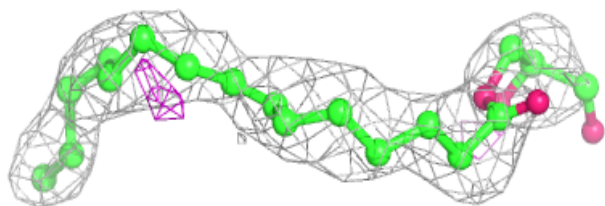
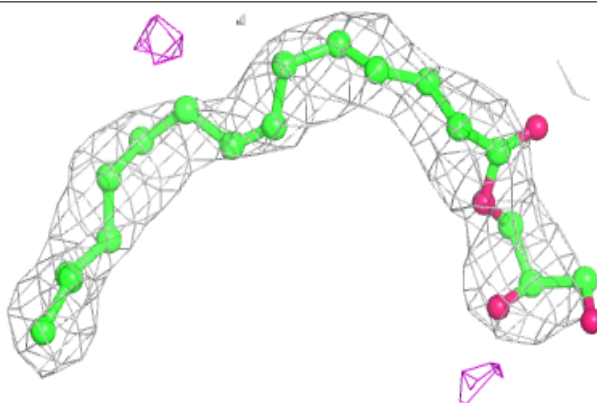


**Electron density around 78N D 1126:**

$2mF_o-DF_c$  (at 0.7 rmsd) in gray  
 $mF_o-DF_c$  (at 3 rmsd) in purple (negative)  
and green (positive)

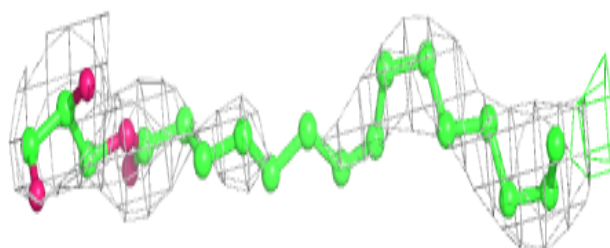
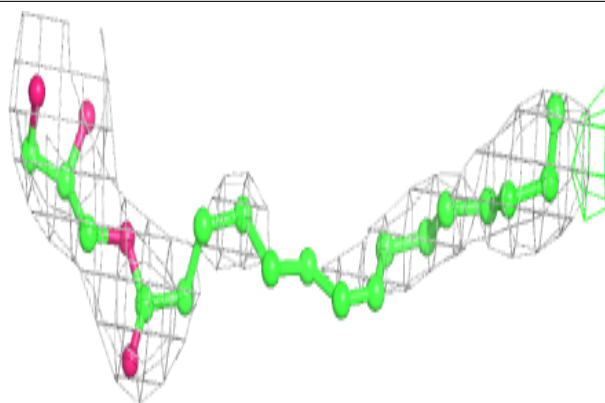
**Electron density around 78N D 1125:**

$2mF_o-DF_c$  (at 0.7 rmsd) in gray  
 $mF_o-DF_c$  (at 3 rmsd) in purple (negative)  
and green (positive)

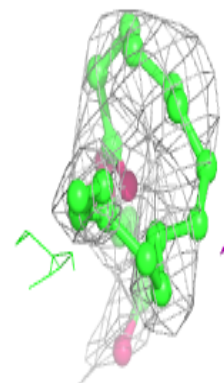
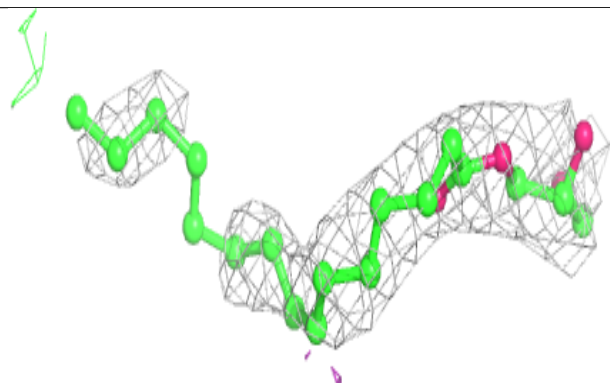
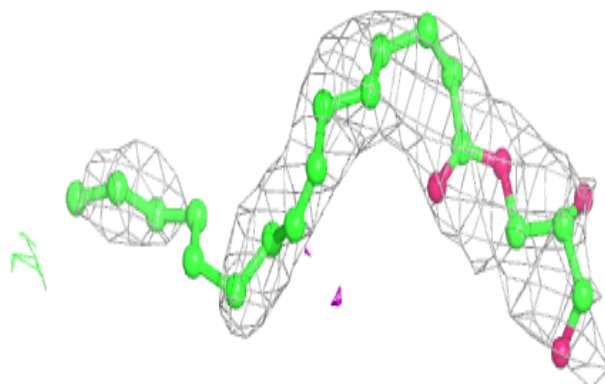


**Electron density around 78N A 1123:**

$2mF_o-DF_c$  (at 0.7 rmsd) in gray  
 $mF_o-DF_c$  (at 3 rmsd) in purple (negative)  
and green (positive)

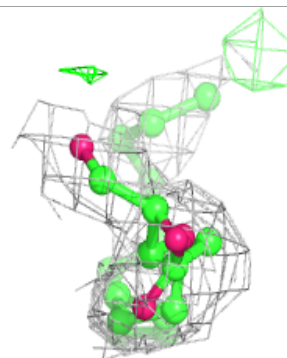
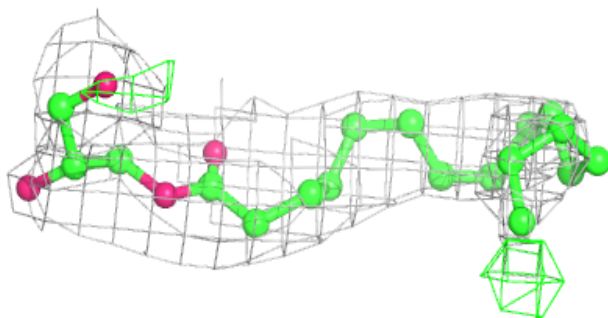
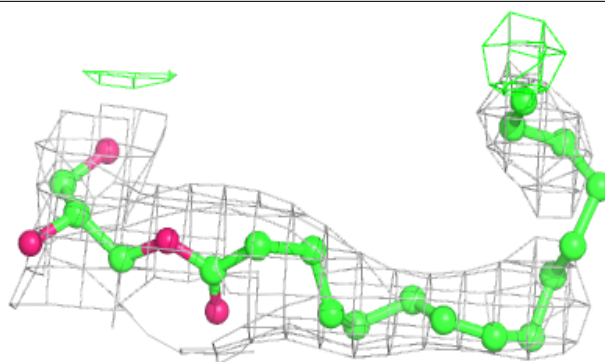
**Electron density around 78N B 1122:**

$2mF_o-DF_c$  (at 0.7 rmsd) in gray  
 $mF_o-DF_c$  (at 3 rmsd) in purple (negative)  
and green (positive)

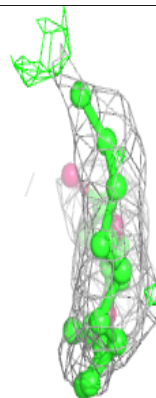
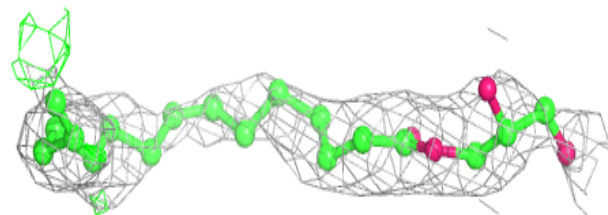
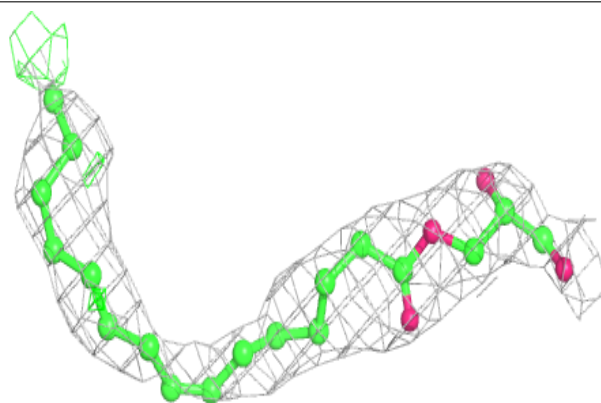


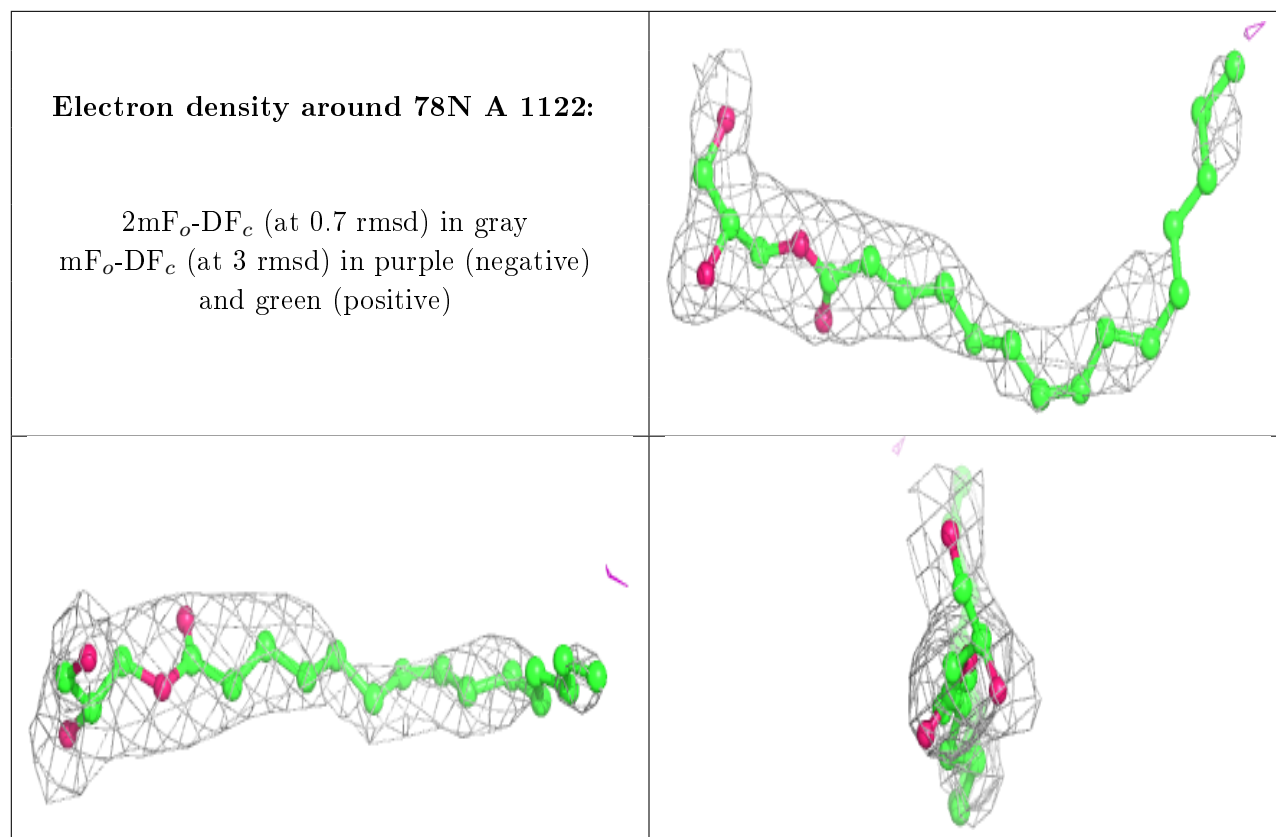
**Electron density around 78N A 1124:**

$2mF_o-DF_c$  (at 0.7 rmsd) in gray  
 $mF_o-DF_c$  (at 3 rmsd) in purple (negative)  
and green (positive)

**Electron density around 78N A 1121:**

$2mF_o-DF_c$  (at 0.7 rmsd) in gray  
 $mF_o-DF_c$  (at 3 rmsd) in purple (negative)  
and green (positive)





## 6.5 Other polymers [i](#)

There are no such residues in this entry.