



# Full wwPDB X-ray Structure Validation Report ⓘ

May 14, 2020 – 10:20 am BST

PDB ID : 6BRD  
Title : Crystal structure of rifampin monooxygenase from *Streptomyces venezuelae*, complexed with rifampin and FAD  
Authors : Cox, G.; Kelso, J.; Stogios, P.J.; Savchenko, A.; Anderson, W.F.; Wright, G.D.; Center for Structural Genomics of Infectious Diseases (CSGID)  
Deposited on : 2017-11-30  
Resolution : 3.32 Å(reported)

This is a Full wwPDB X-ray Structure Validation Report for a publicly released PDB entry.

We welcome your comments at [validation@mail.wwpdb.org](mailto:validation@mail.wwpdb.org)

A user guide is available at

<https://www.wwpdb.org/validation/2017/XrayValidationReportHelp>

with specific help available everywhere you see the ⓘ symbol.

---

The following versions of software and data (see [references ⓘ](#)) were used in the production of this report:

MolProbity	:	4.02b-467
Mogul	:	1.8.5 (274361), CSD as541be (2020)
Xtriage (Phenix)	:	1.13
EDS	:	2.11
buster-report	:	1.1.7 (2018)
Percentile statistics	:	20191225.v01 (using entries in the PDB archive December 25th 2019)
Refmac	:	5.8.0158
CCP4	:	7.0.044 (Gargrove)
Ideal geometry (proteins)	:	Engh & Huber (2001)
Ideal geometry (DNA, RNA)	:	Parkinson et al. (1996)
Validation Pipeline (wwPDB-VP)	:	2.11

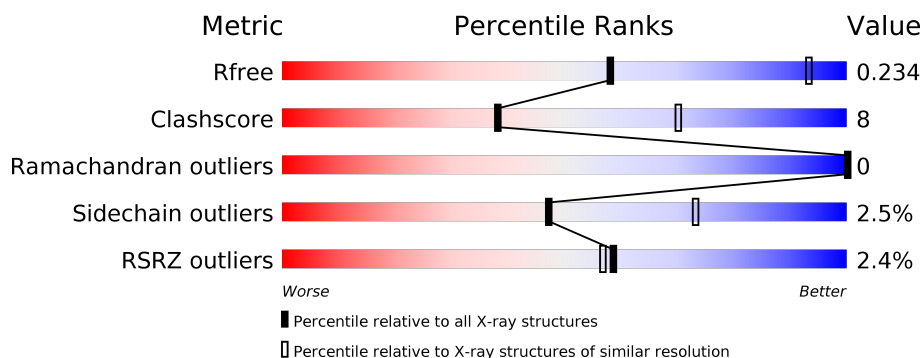
# 1 Overall quality at a glance

The following experimental techniques were used to determine the structure:

*X-RAY DIFFRACTION*

The reported resolution of this entry is 3.32 Å.

Percentile scores (ranging between 0-100) for global validation metrics of the entry are shown in the following graphic. The table shows the number of entries on which the scores are based.



Metric	Whole archive (#Entries)	Similar resolution (#Entries, resolution range(Å))
$R_{free}$	130704	1089 (3.36-3.28)
Clashscore	141614	1137 (3.36-3.28)
Ramachandran outliers	138981	1115 (3.36-3.28)
Sidechain outliers	138945	1114 (3.36-3.28)
RSRZ outliers	127900	1059 (3.36-3.28)

The table below summarises the geometric issues observed across the polymeric chains and their fit to the electron density. The red, orange, yellow and green segments on the lower bar indicate the fraction of residues that contain outliers for  $\geq 3$ , 2, 1 and 0 types of geometric quality criteria respectively. A grey segment represents the fraction of residues that are not modelled. The numeric value for each fraction is indicated below the corresponding segment, with a dot representing fractions  $\leq 5\%$ . The upper red bar (where present) indicates the fraction of residues that have poor fit to the electron density. The numeric value is given above the bar.

Mol	Chain	Length	Quality of chain
1	A	476	<div> <div>2%</div> <div> <div></div> <div>80%</div> <div>19%</div> <div>.</div> </div> </div>
1	B	476	<div> <div>3%</div> <div> <div></div> <div>84%</div> <div>15%</div> </div> </div>
1	C	476	<div> <div>2%</div> <div> <div></div> <div>81%</div> <div>16%</div> <div>..</div> </div> </div>

## 2 Entry composition [i](#)

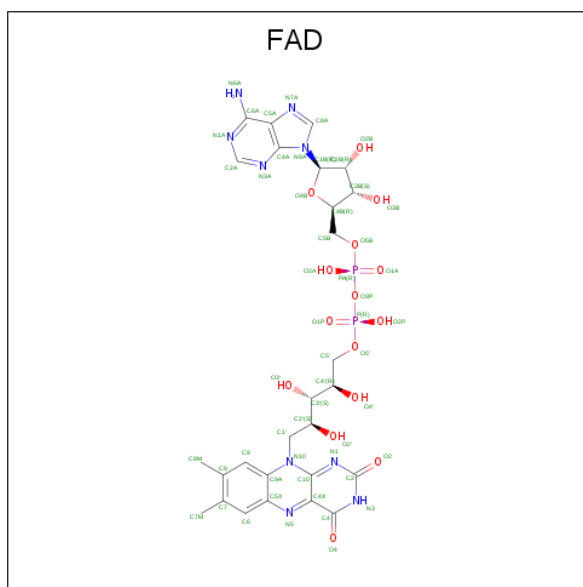
There are 6 unique types of molecules in this entry. The entry contains 11210 atoms, of which 0 are hydrogens and 0 are deuteriums.

In the tables below, the ZeroOcc column contains the number of atoms modelled with zero occupancy, the AltConf column contains the number of residues with at least one atom in alternate conformation and the Trace column contains the number of residues modelled with at most 2 atoms.

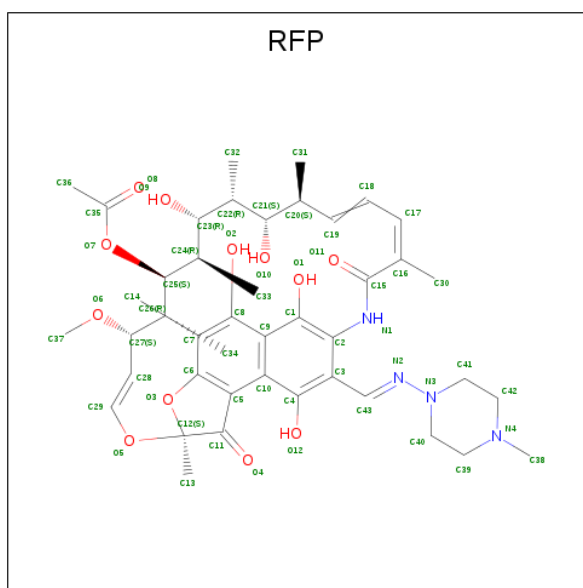
- Molecule 1 is a protein called Rifampin monooxygenase.

Mol	Chain	Residues	Atoms					ZeroOcc	AltConf	Trace
1	A	474	Total	C	N	O	S	0	0	0
			3602	2258	672	659	13			
1	B	474	Total	C	N	O	S	0	0	0
			3638	2276	675	674	13			
1	C	468	Total	C	N	O	S	0	0	0
			3553	2229	661	651	12			

- Molecule 2 is FLAVIN-ADENINE DINUCLEOTIDE (three-letter code: FAD) (formula:  $C_{27}H_{33}N_9O_{15}P_2$ ).



- Molecule 3 is RIFAMPICIN (three-letter code: RFP) (formula:  $C_{43}H_{58}N_4O_{12}$ ).



Mol	Chain	Residues	Atoms				ZeroOcc	AltConf
3	A	1	Total	C	N	O	0	0
			52	38	2	12		
3	B	1	Total	C	N	O	0	0
			52	38	2	12		
3	C	1	Total	C	N	O	0	0
			52	38	2	12		

- Molecule 4 is CHLORIDE ION (three-letter code: CL) (formula: Cl).

Mol	Chain	Residues	Atoms		ZeroOcc	AltConf
4	B	3	Total	Cl	0	0
			3	3		
4	A	4	Total	Cl	0	0
			4	4		
4	C	3	Total	Cl	0	0
			3	3		

- Molecule 5 is MAGNESIUM ION (three-letter code: MG) (formula: Mg).

Mol	Chain	Residues	Atoms		ZeroOcc	AltConf
5	B	1	Total	Mg	0	0
			1	1		

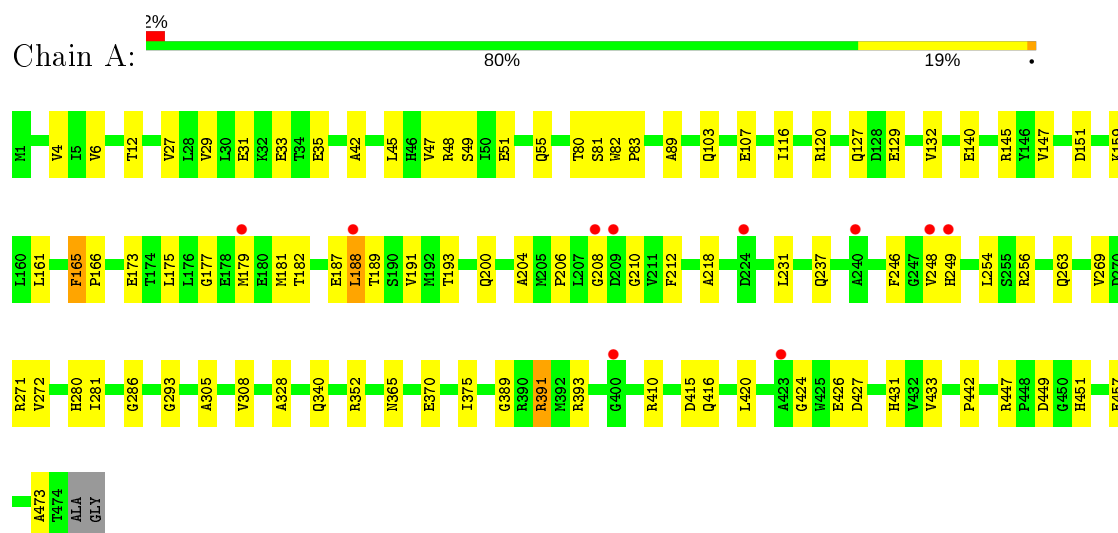
- Molecule 6 is water.

Mol	Chain	Residues	Atoms		ZeroOcc	AltConf
6	A	32	Total 32	O 32	0	0
6	B	35	Total 35	O 35	0	0
6	C	24	Total 24	O 24	0	0

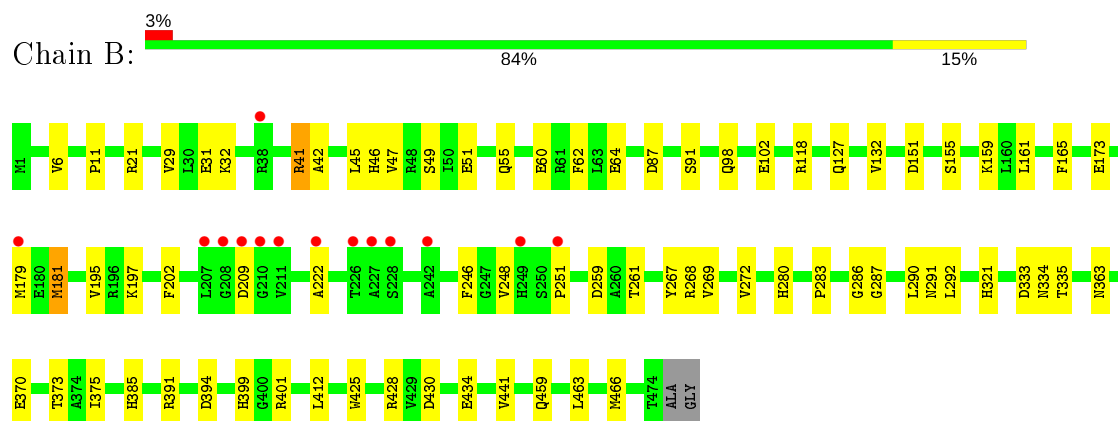
### 3 Residue-property plots [i](#)

These plots are drawn for all protein, RNA and DNA chains in the entry. The first graphic for a chain summarises the proportions of the various outlier classes displayed in the second graphic. The second graphic shows the sequence view annotated by issues in geometry and electron density. Residues are color-coded according to the number of geometric quality criteria for which they contain at least one outlier: green = 0, yellow = 1, orange = 2 and red = 3 or more. A red dot above a residue indicates a poor fit to the electron density ( $RSRZ > 2$ ). Stretches of 2 or more consecutive residues without any outlier are shown as a green connector. Residues present in the sample, but not in the model, are shown in grey.

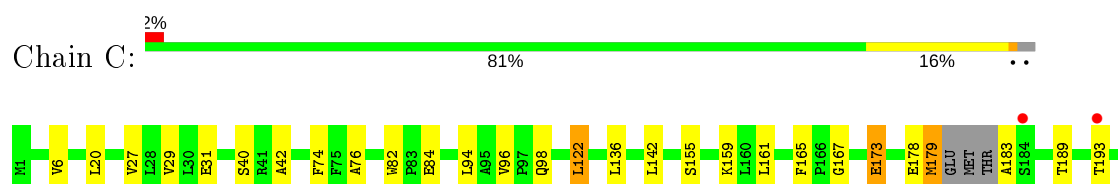
#### • Molecule 1: Rifampin monooxygenase

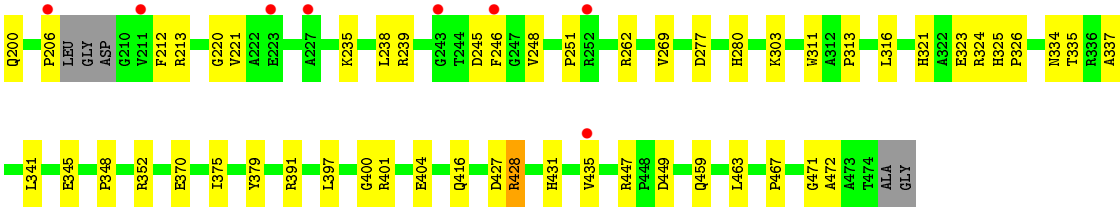


#### • Molecule 1: Rifampin monooxygenase



#### • Molecule 1: Rifampin monooxygenase





## 4 Data and refinement statistics

Property	Value	Source
Space group	C 1 2 1	Depositor
Cell constants a, b, c, $\alpha$ , $\beta$ , $\gamma$	202.03 Å   129.40 Å   74.34 Å 90.00°   105.45°   90.00°	Depositor
Resolution (Å)	33.42 – 3.32 33.42 – 3.27	Depositor EDS
% Data completeness (in resolution range)	97.8 (33.42-3.32) 91.0 (33.42-3.27)	Depositor EDS
$R_{merge}$	(Not available)	Depositor
$R_{sym}$	0.16	Depositor
$\langle I/\sigma(I) \rangle$ <sup>1</sup>	0.31 (at 3.25 Å)	Xtriage
Refinement program	PHENIX (dev_2733: ???)	Depositor
R, $R_{free}$	0.184   ,   0.234 0.185   ,   0.234	Depositor DCC
$R_{free}$ test set	1372 reflections (5.00%)	wwPDB-VP
Wilson B-factor (Å <sup>2</sup> )	48.3	Xtriage
Anisotropy	0.283	Xtriage
Bulk solvent $k_{sol}$ (e/Å <sup>3</sup> ), $B_{sol}$ (Å <sup>2</sup> )	0.31 , 57.6	EDS
L-test for twinning <sup>2</sup>	$\langle  L  \rangle = 0.47$ , $\langle L^2 \rangle = 0.30$	Xtriage
Estimated twinning fraction	No twinning to report.	Xtriage
$F_o, F_c$ correlation	0.91	EDS
Total number of atoms	11210	wwPDB-VP
Average B, all atoms (Å <sup>2</sup> )	58.0	wwPDB-VP

Xtriage's analysis on translational NCS is as follows: *The largest off-origin peak in the Patterson function is 3.08% of the height of the origin peak. No significant pseudotranslation is detected.*

<sup>1</sup>Intensities estimated from amplitudes.

<sup>2</sup>Theoretical values of  $\langle |L| \rangle$ ,  $\langle L^2 \rangle$  for acentric reflections are 0.5, 0.333 respectively for untwinned datasets, and 0.375, 0.2 for perfectly twinned datasets.



## 5 Model quality [i](#)

### 5.1 Standard geometry [i](#)

Bond lengths and bond angles in the following residue types are not validated in this section: MG, RFP, FAD, CL

The Z score for a bond length (or angle) is the number of standard deviations the observed value is removed from the expected value. A bond length (or angle) with  $|Z| > 5$  is considered an outlier worth inspection. RMSZ is the root-mean-square of all Z scores of the bond lengths (or angles).

Mol	Chain	Bond lengths		Bond angles	
		RMSZ	$\# Z  > 5$	RMSZ	$\# Z  > 5$
1	A	0.29	0/3671	0.50	0/4984
1	B	0.33	0/3707	0.51	0/5027
1	C	0.33	0/3620	0.49	0/4913
All	All	0.32	0/10998	0.50	0/14924

There are no bond length outliers.

There are no bond angle outliers.

There are no chirality outliers.

There are no planarity outliers.

### 5.2 Too-close contacts [i](#)

In the following table, the Non-H and H(model) columns list the number of non-hydrogen atoms and hydrogen atoms in the chain respectively. The H(added) column lists the number of hydrogen atoms added and optimized by MolProbity. The Clashes column lists the number of clashes within the asymmetric unit, whereas Symm-Clashes lists symmetry related clashes.

Mol	Chain	Non-H	H(model)	H(added)	Clashes	Symm-Clashes
1	A	3602	0	3531	59	0
1	B	3638	0	3576	47	0
1	C	3553	0	3466	46	0
2	A	53	0	30	3	0
2	B	53	0	30	2	0
2	C	53	0	30	3	0
3	A	52	0	47	6	0
3	B	52	0	47	7	0
3	C	52	0	47	3	0
4	A	4	0	0	1	0

*Continued on next page...*

*Continued from previous page...*

Mol	Chain	Non-H	H(model)	H(added)	Clashes	Symm-Clashes
4	B	3	0	0	0	0
4	C	3	0	0	0	0
5	B	1	0	0	0	0
6	A	32	0	0	0	0
6	B	35	0	0	0	0
6	C	24	0	0	0	0
All	All	11210	0	10804	166	0

The all-atom clashscore is defined as the number of clashes found per 1000 atoms (including hydrogen atoms). The all-atom clashscore for this structure is 8.

All (166) close contacts within the same asymmetric unit are listed below, sorted by their clash magnitude.

Atom-1	Atom-2	Interatomic distance (Å)	Clash overlap (Å)
1:C:370:GLU:HG2	1:C:375:ILE:HD11	1.46	0.96
1:C:179:MET:HB3	1:C:251:PRO:HB3	1.64	0.78
1:B:42:ALA:HB3	1:B:98:GLN:HB2	1.67	0.76
1:A:286:GLY:H	3:A:502:RFP:HC43	1.49	0.75
3:B:502:RFP:O9	3:B:502:RFP:O10	2.05	0.70
1:B:286:GLY:H	3:B:502:RFP:HC43	1.57	0.69
1:B:269:VAL:O	1:B:269:VAL:HG12	1.93	0.67
1:B:127:GLN:HE22	1:B:269:VAL:HG12	1.63	0.64
1:C:311:TRP:CB	1:C:428:ARG:NH1	2.61	0.64
1:A:175:LEU:HG	1:A:218:ALA:HB2	1.80	0.63
1:A:370:GLU:HG2	1:A:375:ILE:HD11	1.81	0.63
1:A:424:GLY:HA3	1:A:473:ALA:HB1	1.83	0.61
1:B:181:MET:HA	1:B:248:VAL:HA	1.83	0.61
1:A:389:GLY:O	1:A:451:HIS:ND1	2.33	0.60
1:C:235:LYS:HA	1:C:238:LEU:HB2	1.83	0.60
3:C:502:RFP:H12O	3:C:502:RFP:C11	2.15	0.59
1:C:311:TRP:HB3	1:C:428:ARG:NH1	2.17	0.59
1:C:428:ARG:NH2	1:C:472:ALA:O	2.35	0.59
3:B:502:RFP:H10O	3:B:502:RFP:HO9	1.50	0.59
1:B:41:ARG:HH21	2:B:501:FAD:HM81	1.66	0.59
1:C:40:SER:O	1:C:213:ARG:NH2	2.33	0.58
1:A:200:GLN:HG2	1:A:352:ARG:CZ	2.34	0.57
1:C:183:ALA:N	1:C:246:PHE:O	2.38	0.57
1:C:311:TRP:CB	1:C:428:ARG:HH11	2.18	0.56
3:B:502:RFP:H12O	3:B:502:RFP:C11	2.19	0.56
1:A:182:THR:N	1:A:246:PHE:O	2.39	0.55
1:A:173:GLU:HG3	1:A:256:ARG:HH21	1.72	0.55

*Continued on next page...*

*Continued from previous page...*

Atom-1	Atom-2	Interatomic distance (Å)	Clash overlap (Å)
1:C:206:PRO:HA	1:C:212:PHE:HB3	1.88	0.55
1:A:188:LEU:HD22	1:A:188:LEU:O	2.07	0.55
1:A:415:ASP:OD2	1:A:420:LEU:HB2	2.07	0.55
1:B:87:ASP:O	1:B:391:ARG:NH1	2.35	0.54
1:A:415:ASP:HB3	1:A:433:VAL:HG22	1.89	0.54
1:C:311:TRP:HB2	1:C:428:ARG:NH1	2.22	0.54
1:C:173:GLU:HG3	1:C:221:VAL:HA	1.89	0.54
1:A:188:LEU:HD11	1:A:204:ALA:HB3	1.88	0.54
3:A:502:RFP:O9	3:A:502:RFP:O7	2.20	0.53
1:C:324:ARG:NH1	1:C:379:TYR:OH	2.37	0.53
1:A:175:LEU:HD12	1:A:237:GLN:HG3	1.89	0.53
3:A:502:RFP:H12O	3:A:502:RFP:C11	2.13	0.53
3:C:502:RFP:O12	3:C:502:RFP:O4	2.24	0.53
3:C:502:RFP:O9	3:C:502:RFP:O7	2.26	0.53
1:B:151:ASP:OD1	1:B:151:ASP:N	2.42	0.52
1:A:151:ASP:OD1	1:A:151:ASP:N	2.42	0.52
1:B:41:ARG:HG3	1:B:98:GLN:OE1	2.10	0.52
1:A:427:ASP:OD1	1:A:427:ASP:N	2.43	0.52
1:B:31:GLU:HB3	1:B:118:ARG:HA	1.92	0.52
1:C:178:GLU:HA	1:C:213:ARG:HA	1.92	0.51
1:B:370:GLU:HG2	1:B:375:ILE:HD11	1.91	0.51
3:B:502:RFP:O4	3:B:502:RFP:O12	2.26	0.51
1:A:305:ALA:HA	1:A:308:VAL:HG22	1.92	0.51
1:C:401:ARG:N	1:C:404:GLU:OE2	2.44	0.51
1:C:42:ALA:HB3	1:C:98:GLN:HB2	1.93	0.51
1:A:127:GLN:HB3	1:A:132:VAL:HG13	1.94	0.50
1:B:11:PRO:HD3	1:B:102:GLU:HG2	1.92	0.50
1:A:145:ARG:O	1:A:271:ARG:HD3	2.11	0.50
1:B:259:ASP:HA	1:B:283:PRO:HG3	1.93	0.50
1:A:6:VAL:HG13	1:A:29:VAL:HA	1.93	0.50
1:C:370:GLU:HG2	1:C:375:ILE:CD1	2.31	0.50
1:A:151:ASP:HA	2:A:501:FAD:H52A	1.93	0.50
1:C:31:GLU:OE2	2:C:501:FAD:O3B	2.29	0.50
1:A:175:LEU:CD1	1:A:237:GLN:HG3	2.42	0.49
1:A:424:GLY:N	1:A:426:GLU:OE1	2.43	0.49
1:A:161:LEU:HD22	1:A:269:VAL:HG21	1.95	0.49
1:A:447:ARG:NH2	1:A:449:ASP:OD2	2.43	0.49
1:C:345:GLU:HB3	1:C:348:PRO:HD2	1.94	0.49
1:C:397:LEU:HB2	1:C:400:GLY:O	2.12	0.49
1:C:74:PHE:HE2	1:C:82:TRP:HZ3	1.60	0.49
1:A:159:LYS:HG2	4:A:504:CL:CL	2.49	0.49

*Continued on next page...*

*Continued from previous page...*

Atom-1	Atom-2	Interatomic distance (Å)	Clash overlap (Å)
1:B:173:GLU:OE2	1:B:222:ALA:N	2.41	0.49
1:A:269:VAL:HG23	1:A:272:VAL:HB	1.95	0.48
1:C:161:LEU:HD22	1:C:269:VAL:HG21	1.95	0.48
1:A:165:PHE:HZ	1:A:281:ILE:HG23	1.77	0.48
1:A:45:LEU:HB3	1:A:49:SER:HB2	1.96	0.48
3:B:502:RFP:H322	3:B:502:RFP:H313	1.95	0.47
1:B:195:VAL:O	1:B:197:LYS:N	2.45	0.47
1:C:447:ARG:NH2	1:C:449:ASP:OD2	2.35	0.47
1:B:127:GLN:HB3	1:B:132:VAL:HG13	1.96	0.47
1:C:235:LYS:O	1:C:239:ARG:HG3	2.15	0.47
1:C:416:GLN:HG2	1:C:435:VAL:HA	1.96	0.47
1:C:337:ALA:O	1:C:341:LEU:N	2.49	0.46
1:C:467:PRO:HA	1:C:471:GLY:O	2.15	0.46
1:B:334:ASN:OD1	1:B:335:THR:N	2.48	0.46
1:A:129:GLU:O	1:A:271:ARG:NH2	2.46	0.46
1:A:166:PRO:HD2	1:A:263:GLN:O	2.15	0.46
1:C:245:ASP:O	1:C:248:VAL:HG23	2.15	0.46
2:A:501:FAD:O4	3:A:502:RFP:O1	2.17	0.45
1:B:290:LEU:H	2:B:501:FAD:C2	2.29	0.45
1:C:173:GLU:HB2	1:C:220:GLY:O	2.17	0.45
1:C:76:ALA:O	1:C:352:ARG:NH2	2.38	0.45
3:A:502:RFP:HO9	3:A:502:RFP:C35	2.27	0.45
1:A:416:GLN:HB2	1:A:442:PRO:O	2.16	0.45
1:B:41:ARG:HG2	1:B:41:ARG:H	1.63	0.45
1:C:303:LYS:NZ	1:C:323:GLU:OE1	2.48	0.45
1:A:189:THR:O	1:A:193:THR:OG1	2.27	0.45
1:A:188:LEU:HD22	1:A:188:LEU:C	2.37	0.45
1:B:21:ARG:HA	1:B:21:ARG:HD2	1.80	0.45
1:B:47:VAL:O	1:B:51:GLU:HG3	2.17	0.45
1:A:375:ILE:HB	1:A:391:ARG:NH1	2.31	0.45
1:B:425:TRP:HA	1:B:428:ARG:HH21	1.82	0.44
1:C:94:LEU:HG	1:C:96:VAL:HG23	1.99	0.44
1:B:399:HIS:N	1:B:434:GLU:OE1	2.49	0.44
1:A:120:ARG:NH1	1:A:140:GLU:OE2	2.50	0.44
1:C:277:ASP:HA	1:C:280:HIS:O	2.17	0.44
1:B:287:GLY:O	1:B:291:ASN:ND2	2.51	0.44
1:B:45:LEU:HD11	1:B:62:PHE:CE2	2.53	0.44
1:C:200:GLN:HG2	1:C:352:ARG:NH2	2.33	0.44
1:B:46:HIS:HB3	1:B:373:THR:HG22	2.00	0.43
1:A:42:ALA:HA	2:A:501:FAD:C4X	2.48	0.43
1:A:80:THR:HG22	1:A:81:SER:H	1.83	0.43

*Continued on next page...*

*Continued from previous page...*

Atom-1	Atom-2	Interatomic distance (Å)	Clash overlap (Å)
1:B:46:HIS:CE1	3:B:502:RFP:H303	2.52	0.43
1:B:412:LEU:HD12	1:B:430:ASP:HB2	2.00	0.43
1:C:167:GLY:HA3	1:C:262:ARG:HA	2.00	0.43
1:C:334:ASN:OD1	1:C:335:THR:N	2.51	0.43
1:A:208:GLY:C	1:A:210:GLY:H	2.22	0.43
1:A:280:HIS:ND1	1:A:280:HIS:O	2.50	0.43
1:A:263:GLN:NE2	1:A:328:ALA:HB3	2.34	0.43
1:B:6:VAL:HG13	1:B:29:VAL:HA	2.01	0.43
1:B:280:HIS:HE1	1:B:292:LEU:HB3	1.84	0.43
1:B:394:ASP:OD2	1:B:401:ARG:HD2	2.19	0.43
1:C:427:ASP:N	1:C:427:ASP:OD2	2.34	0.43
3:A:502:RFP:O4	3:A:502:RFP:O12	2.27	0.43
1:B:45:LEU:HB3	1:B:49:SER:HB2	2.01	0.42
1:A:147:VAL:O	1:A:272:VAL:HA	2.19	0.42
1:A:31:GLU:OE1	1:A:33:GLU:N	2.46	0.42
1:C:122:LEU:HB3	2:C:501:FAD:H62A	1.83	0.42
1:B:51:GLU:O	1:B:55:GLN:HG3	2.20	0.42
1:B:179:MET:HA	1:B:251:PRO:HA	2.01	0.42
1:B:385:HIS:NE2	1:B:441:VAL:HG11	2.34	0.42
1:A:4:VAL:O	1:A:27:VAL:HA	2.19	0.42
1:B:60:GLU:O	1:B:64:GLU:HG3	2.20	0.42
1:C:189:THR:O	1:C:193:THR:HG23	2.19	0.42
1:B:155:SER:O	1:B:159:LYS:HG3	2.20	0.42
1:B:202:PHE:HZ	1:B:246:PHE:HE2	1.67	0.42
2:C:501:FAD:H1'1	2:C:501:FAD:H9	1.89	0.42
1:A:410:ARG:NH2	1:A:427:ASP:O	2.52	0.42
1:A:187:GLU:O	1:A:191:VAL:HG23	2.20	0.41
1:A:89:ALA:HB2	1:A:393:ARG:HH21	1.85	0.41
1:B:161:LEU:HD11	1:B:272:VAL:CG1	2.50	0.41
1:C:20:LEU:HB2	1:C:27:VAL:HG11	2.02	0.41
1:A:29:VAL:HB	1:A:116:ILE:HG23	2.01	0.41
1:B:268:ARG:HG3	1:B:269:VAL:N	2.34	0.41
1:C:155:SER:O	1:C:159:LYS:HG3	2.21	0.41
1:A:442:PRO:HG2	1:A:457:GLU:HB3	2.02	0.41
1:C:6:VAL:HG22	1:C:29:VAL:HA	2.00	0.41
1:A:81:SER:O	1:A:365:ASN:ND2	2.52	0.41
1:A:177:GLY:HA3	1:A:254:LEU:HD23	2.01	0.41
1:A:103:GLN:O	1:A:107:GLU:HG3	2.21	0.41
1:B:268:ARG:CG	1:B:269:VAL:N	2.80	0.41
1:C:313:PRO:HD2	1:C:316:LEU:HB2	2.02	0.41
1:B:31:GLU:OE1	1:B:32:LYS:N	2.53	0.41

*Continued on next page...*

Continued from previous page...

Atom-1	Atom-2	Interatomic distance (Å)	Clash overlap (Å)
1:C:459:GLN:HG3	1:C:463:LEU:HD23	2.03	0.41
1:B:261:THR:OG1	1:B:261:THR:O	2.36	0.40
1:B:267:TYR:HB2	1:B:321:HIS:HB2	2.02	0.40
1:A:200:GLN:HG2	1:A:352:ARG:NH2	2.36	0.40
1:A:82:TRP:HA	1:A:83:PRO:HD3	1.97	0.40
1:B:161:LEU:HD21	1:B:272:VAL:HG11	2.03	0.40
1:B:363:ASN:OD1	1:B:363:ASN:N	2.51	0.40
1:C:325:HIS:HB3	1:C:326:PRO:HD3	2.02	0.40
1:A:200:GLN:N	1:A:200:GLN:OE1	2.54	0.40
1:A:47:VAL:O	1:A:51:GLU:HG3	2.21	0.40
1:A:206:PRO:HB3	1:A:212:PHE:CE1	2.56	0.40
1:A:12:THR:HG23	1:A:293:GLY:O	2.22	0.40
1:A:424:GLY:O	1:A:473:ALA:HA	2.22	0.40
1:A:48:ARG:HH12	1:A:55:GLN:NE2	2.19	0.40
1:B:459:GLN:HE21	1:B:463:LEU:CD2	2.34	0.40
1:C:136:LEU:HD11	1:C:142:LEU:HD11	2.03	0.40

There are no symmetry-related clashes.

## 5.3 Torsion angles [i](#)

### 5.3.1 Protein backbone [i](#)

In the following table, the Percentiles column shows the percent Ramachandran outliers of the chain as a percentile score with respect to all X-ray entries followed by that with respect to entries of similar resolution.

The Analysed column shows the number of residues for which the backbone conformation was analysed, and the total number of residues.

Mol	Chain	Analysed	Favoured	Allowed	Outliers	Percentiles	
1	A	472/476 (99%)	436 (92%)	36 (8%)	0	100	100
1	B	472/476 (99%)	434 (92%)	38 (8%)	0	100	100
1	C	462/476 (97%)	434 (94%)	28 (6%)	0	100	100
All	All	1406/1428 (98%)	1304 (93%)	102 (7%)	0	100	100

There are no Ramachandran outliers to report.

### 5.3.2 Protein sidechains ⓘ

In the following table, the Percentiles column shows the percent sidechain outliers of the chain as a percentile score with respect to all X-ray entries followed by that with respect to entries of similar resolution.

The Analysed column shows the number of residues for which the sidechain conformation was analysed, and the total number of residues.

Mol	Chain	Analysed	Rotameric	Outliers	Percentiles	
1	A	357/379 (94%)	346 (97%)	11 (3%)	40	68
1	B	366/379 (97%)	359 (98%)	7 (2%)	57	78
1	C	350/379 (92%)	341 (97%)	9 (3%)	46	72
All	All	1073/1137 (94%)	1046 (98%)	27 (2%)	47	73

All (27) residues with a non-rotameric sidechain are listed below:

Mol	Chain	Res	Type
1	A	35	GLU
1	A	165	PHE
1	A	179	MET
1	A	181	MET
1	A	188	LEU
1	A	231	LEU
1	A	248	VAL
1	A	249	HIS
1	A	340	GLN
1	A	391	ARG
1	A	431	HIS
1	B	41	ARG
1	B	91	SER
1	B	165	PHE
1	B	181	MET
1	B	209	ASP
1	B	333	ASP
1	B	466	MET
1	C	84	GLU
1	C	122	LEU
1	C	165	PHE
1	C	173	GLU
1	C	179	MET
1	C	321	HIS
1	C	391	ARG
1	C	428	ARG

*Continued on next page...*

*Continued from previous page...*

Mol	Chain	Res	Type
1	C	431	HIS

Some sidechains can be flipped to improve hydrogen bonding and reduce clashes. All (2) such sidechains are listed below:

Mol	Chain	Res	Type
1	A	416	GLN
1	B	127	GLN

### 5.3.3 RNA [i](#)

There are no RNA molecules in this entry.

## 5.4 Non-standard residues in protein, DNA, RNA chains [i](#)

There are no non-standard protein/DNA/RNA residues in this entry.

## 5.5 Carbohydrates [i](#)

There are no carbohydrates in this entry.

## 5.6 Ligand geometry [i](#)

Of 17 ligands modelled in this entry, 11 are monoatomic - leaving 6 for Mogul analysis.

In the following table, the Counts columns list the number of bonds (or angles) for which Mogul statistics could be retrieved, the number of bonds (or angles) that are observed in the model and the number of bonds (or angles) that are defined in the Chemical Component Dictionary. The Link column lists molecule types, if any, to which the group is linked. The Z score for a bond length (or angle) is the number of standard deviations the observed value is removed from the expected value. A bond length (or angle) with  $|Z| > 2$  is considered an outlier worth inspection. RMSZ is the root-mean-square of all Z scores of the bond lengths (or angles).

Mol	Type	Chain	Res	Link	Bond lengths			Bond angles		
					Counts	RMSZ	$\# Z  > 2$	Counts	RMSZ	$\# Z  > 2$
3	RFP	B	502	-	54,55,63	2.82	15 (27%)	83,83,94	4.96	35 (42%)
2	FAD	B	501	-	51,58,58	4.91	24 (47%)	60,89,89	2.04	10 (16%)
2	FAD	C	501	-	51,58,58	4.90	23 (45%)	60,89,89	2.03	10 (16%)
2	FAD	A	501	-	51,58,58	4.91	24 (47%)	60,89,89	2.05	11 (18%)
3	RFP	C	502	-	54,55,63	2.85	15 (27%)	83,83,94	4.86	31 (37%)



Mol	Type	Chain	Res	Link	Bond lengths			Bond angles		
					Counts	RMSZ	# Z  > 2	Counts	RMSZ	# Z  > 2
3	RFP	A	502	-	54,55,63	2.77	15 (27%)	83,83,94	4.88	33 (39%)

In the following table, the Chirals column lists the number of chiral outliers, the number of chiral centers analysed, the number of these observed in the model and the number defined in the Chemical Component Dictionary. Similar counts are reported in the Torsion and Rings columns. '-' means no outliers of that kind were identified.

Mol	Type	Chain	Res	Link	Chirals	Torsions	Rings
3	RFP	B	502	-	-	25/56/72/85	0/4/4/5
2	FAD	B	501	-	-	10/30/50/50	0/6/6/6
2	FAD	C	501	-	-	13/30/50/50	0/6/6/6
2	FAD	A	501	-	-	11/30/50/50	0/6/6/6
3	RFP	C	502	-	-	25/56/72/85	0/4/4/5
3	RFP	A	502	-	-	17/56/72/85	0/4/4/5

All (116) bond length outliers are listed below:

Mol	Chain	Res	Type	Atoms	Z	Observed(Å)	Ideal(Å)
2	C	501	FAD	C2B-C1B	-15.77	1.29	1.53
2	B	501	FAD	C2B-C1B	-15.76	1.29	1.53
2	A	501	FAD	C2B-C1B	-15.62	1.30	1.53
2	A	501	FAD	O4B-C1B	15.36	1.62	1.41
2	C	501	FAD	O4B-C1B	15.24	1.62	1.41
2	B	501	FAD	O4B-C1B	15.17	1.62	1.41
2	A	501	FAD	C10-N1	11.26	1.47	1.33
2	B	501	FAD	C10-N1	11.13	1.47	1.33
2	C	501	FAD	C10-N1	11.09	1.47	1.33
2	B	501	FAD	C9A-N10	9.65	1.51	1.38
2	C	501	FAD	C4X-N5	9.64	1.47	1.33
2	A	501	FAD	C9A-N10	9.57	1.51	1.38
2	A	501	FAD	C4X-N5	9.55	1.46	1.33
2	B	501	FAD	C4X-N5	9.51	1.46	1.33
2	C	501	FAD	C5X-N5	9.28	1.50	1.35
2	C	501	FAD	C9A-N10	9.25	1.51	1.38
2	B	501	FAD	C5X-N5	9.16	1.50	1.35
2	A	501	FAD	C5X-N5	9.08	1.50	1.35
3	C	502	RFP	C17-C16	7.88	1.57	1.34
3	B	502	RFP	C17-C16	7.71	1.56	1.34
2	C	501	FAD	C4-N3	7.69	1.46	1.33
3	A	502	RFP	C17-C16	7.66	1.56	1.34
2	A	501	FAD	C4-N3	7.59	1.46	1.33

*Continued on next page...*

*Continued from previous page...*

Mol	Chain	Res	Type	Atoms	Z	Observed(Å)	Ideal(Å)
2	B	501	FAD	C4-N3	7.56	1.46	1.33
3	C	502	RFP	C15-N1	7.35	1.51	1.35
3	B	502	RFP	C15-N1	7.09	1.50	1.35
3	C	502	RFP	C1-C9	7.04	1.64	1.43
3	B	502	RFP	C1-C9	7.00	1.64	1.43
2	B	501	FAD	C4X-C10	6.98	1.45	1.38
3	A	502	RFP	C15-N1	6.86	1.50	1.35
2	A	501	FAD	C4X-C10	6.85	1.45	1.38
3	A	502	RFP	C1-C9	6.80	1.64	1.43
2	C	501	FAD	C4X-C10	6.63	1.45	1.38
2	B	501	FAD	C4-C4X	6.61	1.52	1.41
2	A	501	FAD	C4-C4X	6.56	1.52	1.41
2	C	501	FAD	C4-C4X	6.46	1.52	1.41
3	C	502	RFP	C29-C28	6.30	1.62	1.30
3	C	502	RFP	C18-C19	6.22	1.58	1.33
3	B	502	RFP	C29-C28	6.20	1.62	1.30
3	A	502	RFP	C29-C28	6.20	1.62	1.30
3	B	502	RFP	C18-C19	6.13	1.58	1.33
3	A	502	RFP	C18-C19	6.02	1.57	1.33
2	C	501	FAD	O4B-C4B	-6.02	1.31	1.45
2	B	501	FAD	O4B-C4B	-5.97	1.31	1.45
2	A	501	FAD	O4B-C4B	-5.80	1.32	1.45
2	C	501	FAD	C2-N3	5.79	1.49	1.38
2	A	501	FAD	C2-N3	5.70	1.49	1.38
2	B	501	FAD	C2-N3	5.66	1.49	1.38
2	A	501	FAD	C2-N1	5.65	1.49	1.38
2	B	501	FAD	C2-N1	5.48	1.49	1.38
2	C	501	FAD	C2-N1	5.47	1.49	1.38
3	B	502	RFP	O3-C6	5.28	1.47	1.37
3	C	502	RFP	O3-C6	5.27	1.47	1.37
3	A	502	RFP	O3-C6	5.24	1.47	1.37
3	B	502	RFP	C2-N1	5.03	1.53	1.43
3	C	502	RFP	C2-N1	4.96	1.52	1.43
3	C	502	RFP	C18-C17	4.86	1.58	1.43
3	B	502	RFP	C18-C17	4.71	1.58	1.43
3	A	502	RFP	C2-N1	4.63	1.52	1.43
3	A	502	RFP	C18-C17	4.63	1.57	1.43
3	B	502	RFP	C3-C43	4.57	1.55	1.46
3	C	502	RFP	C3-C43	4.48	1.55	1.46
3	A	502	RFP	C3-C43	4.46	1.55	1.46
3	A	502	RFP	O7-C35	4.02	1.44	1.35
3	B	502	RFP	O7-C35	4.02	1.44	1.35

*Continued on next page...*

*Continued from previous page...*

Mol	Chain	Res	Type	Atoms	Z	Observed(Å)	Ideal(Å)
3	C	502	RFP	O7-C35	3.85	1.43	1.35
2	C	501	FAD	C6A-N6A	3.79	1.47	1.34
2	B	501	FAD	C6A-N6A	3.78	1.47	1.34
2	A	501	FAD	C6A-N6A	3.76	1.47	1.34
3	C	502	RFP	O5-C29	3.59	1.48	1.39
3	B	502	RFP	O5-C29	3.57	1.48	1.39
3	A	502	RFP	O5-C29	3.56	1.48	1.39
2	B	501	FAD	C8M-C8	3.26	1.57	1.51
3	C	502	RFP	C12-C11	-3.24	1.41	1.54
2	C	501	FAD	C8M-C8	3.23	1.57	1.51
2	A	501	FAD	C8M-C8	3.23	1.57	1.51
3	A	502	RFP	C12-C11	-3.21	1.41	1.54
3	B	502	RFP	C12-C11	-3.10	1.42	1.54
2	A	501	FAD	O2B-C2B	3.06	1.50	1.43
2	B	501	FAD	O2B-C2B	3.02	1.50	1.43
2	C	501	FAD	O2B-C2B	2.92	1.49	1.43
2	C	501	FAD	O3B-C3B	-2.80	1.36	1.43
2	A	501	FAD	C5'-C4'	2.76	1.55	1.51
2	C	501	FAD	C5'-C4'	2.75	1.55	1.51
2	C	501	FAD	C2A-N3A	2.72	1.36	1.32
2	B	501	FAD	O3B-C3B	-2.70	1.36	1.43
2	A	501	FAD	O3B-C3B	-2.66	1.36	1.43
2	A	501	FAD	O2'-C2'	-2.66	1.37	1.43
2	A	501	FAD	C2A-N3A	2.65	1.36	1.32
2	B	501	FAD	C2A-N3A	2.59	1.36	1.32
2	C	501	FAD	O2'-C2'	-2.58	1.37	1.43
2	C	501	FAD	O4-C4	-2.57	1.18	1.24
3	B	502	RFP	O11-C15	-2.56	1.18	1.23
2	B	501	FAD	C5'-C4'	2.56	1.55	1.51
2	B	501	FAD	O2'-C2'	-2.55	1.37	1.43
3	A	502	RFP	O11-C15	-2.55	1.18	1.23
2	C	501	FAD	C5A-C4A	-2.46	1.34	1.40
2	B	501	FAD	C5A-C4A	-2.45	1.34	1.40
2	A	501	FAD	O4-C4	-2.43	1.18	1.24
2	B	501	FAD	O4-C4	-2.40	1.18	1.24
3	C	502	RFP	O11-C15	-2.39	1.19	1.23
2	A	501	FAD	C5A-C4A	-2.38	1.34	1.40
3	C	502	RFP	C15-C16	2.26	1.59	1.49
3	C	502	RFP	C5-C11	2.23	1.52	1.41
3	B	502	RFP	C5-C11	2.22	1.52	1.41
3	B	502	RFP	C15-C16	2.20	1.59	1.49
2	C	501	FAD	P-O5'	2.17	1.68	1.59

*Continued on next page...*

*Continued from previous page...*

Mol	Chain	Res	Type	Atoms	Z	Observed(Å)	Ideal(Å)
3	A	502	RFP	C15-C16	2.16	1.59	1.49
2	A	501	FAD	P-O5'	2.15	1.68	1.59
3	A	502	RFP	C5-C11	2.14	1.52	1.41
2	A	501	FAD	PA-O5B	2.09	1.67	1.59
2	B	501	FAD	O4'-C4'	-2.08	1.38	1.43
2	B	501	FAD	P-O5'	2.08	1.67	1.59
2	A	501	FAD	O4'-C4'	-2.05	1.39	1.43
2	C	501	FAD	PA-O5B	2.04	1.67	1.59
2	B	501	FAD	O3'-C3'	-2.03	1.38	1.43

All (130) bond angle outliers are listed below:

Mol	Chain	Res	Type	Atoms	Z	Observed(°)	Ideal(°)
3	A	502	RFP	C2-C3-C43	27.07	151.66	124.17
3	C	502	RFP	C2-C3-C43	26.96	151.55	124.17
3	B	502	RFP	C2-C3-C43	26.87	151.46	124.17
3	B	502	RFP	C4-C3-C43	-26.60	84.72	116.52
3	C	502	RFP	C4-C3-C43	-26.54	84.79	116.52
3	A	502	RFP	C4-C3-C43	-26.22	85.17	116.52
3	A	502	RFP	C3-C2-N1	10.49	136.69	119.25
3	B	502	RFP	C3-C2-N1	10.16	136.15	119.25
3	C	502	RFP	C3-C2-N1	9.66	135.32	119.25
2	B	501	FAD	C5A-C6A-N6A	7.69	132.03	120.35
2	A	501	FAD	C5A-C6A-N6A	7.64	131.97	120.35
2	C	501	FAD	C5A-C6A-N6A	7.51	131.77	120.35
3	B	502	RFP	C2-C3-C4	7.18	123.81	119.20
3	C	502	RFP	C2-C3-C4	6.93	123.66	119.20
3	A	502	RFP	C1-C2-N1	-6.81	98.90	119.64
3	B	502	RFP	C1-C2-N1	-6.47	99.91	119.64
3	A	502	RFP	O1-C1-C9	6.28	134.13	119.00
3	B	502	RFP	O1-C1-C9	6.26	134.08	119.00
3	A	502	RFP	C2-C3-C4	6.17	123.17	119.20
3	C	502	RFP	C1-C2-N1	-6.13	100.97	119.64
3	B	502	RFP	O12-C4-C3	6.11	131.69	117.71
3	A	502	RFP	O12-C4-C3	6.07	131.59	117.71
3	C	502	RFP	O12-C4-C3	6.06	131.56	117.71
3	C	502	RFP	O1-C1-C9	5.98	133.39	119.00
2	C	501	FAD	N3A-C2A-N1A	-5.41	120.22	128.68
2	B	501	FAD	N3A-C2A-N1A	-5.30	120.39	128.68
2	B	501	FAD	C4-N3-C2	5.26	119.58	115.14
2	C	501	FAD	C4-N3-C2	5.26	119.58	115.14
2	A	501	FAD	N3A-C2A-N1A	-5.24	120.50	128.68

*Continued on next page...*

*Continued from previous page...*

Mol	Chain	Res	Type	Atoms	Z	Observed(°)	Ideal(°)
3	A	502	RFP	C3-C2-C1	5.17	124.40	120.70
2	B	501	FAD	N6A-C6A-N1A	-5.16	107.86	118.57
2	A	501	FAD	C4-N3-C2	5.15	119.49	115.14
2	A	501	FAD	N6A-C6A-N1A	-5.13	107.93	118.57
2	C	501	FAD	N6A-C6A-N1A	-5.05	108.09	118.57
2	A	501	FAD	C7M-C7-C8	4.69	130.35	120.74
3	C	502	RFP	C20-C19-C18	-4.67	116.34	126.16
3	B	502	RFP	C20-C19-C18	-4.60	116.48	126.16
3	B	502	RFP	C3-C2-C1	4.52	123.93	120.70
3	B	502	RFP	C25-O7-C35	4.49	124.67	117.72
2	B	501	FAD	C7M-C7-C8	4.45	129.86	120.74
3	B	502	RFP	C24-C23-C22	-4.42	108.02	115.43
3	C	502	RFP	O7-C35-C36	4.41	119.21	111.09
2	A	501	FAD	C7M-C7-C6	-4.39	109.83	120.34
2	C	501	FAD	C7M-C7-C8	4.35	129.66	120.74
3	C	502	RFP	O12-C4-C10	-4.32	108.59	119.00
2	B	501	FAD	C7M-C7-C6	-4.29	110.09	120.34
2	C	501	FAD	C7M-C7-C6	-4.25	110.17	120.34
3	B	502	RFP	O12-C4-C10	-4.22	108.82	119.00
3	C	502	RFP	C3-C2-C1	4.20	123.71	120.70
3	A	502	RFP	O12-C4-C10	-4.18	108.92	119.00
3	B	502	RFP	O7-C25-C26	4.13	117.12	107.50
3	A	502	RFP	C25-O7-C35	4.12	124.10	117.72
3	B	502	RFP	O7-C35-C36	4.12	118.67	111.09
3	A	502	RFP	O7-C35-C36	3.95	118.35	111.09
3	A	502	RFP	C5-C10-C9	-3.90	112.55	119.66
3	B	502	RFP	C5-C10-C9	-3.62	113.06	119.66
3	A	502	RFP	O1-C1-C2	-3.60	112.08	119.26
3	B	502	RFP	C32-C22-C21	3.58	118.62	111.39
3	C	502	RFP	C5-C10-C9	-3.56	113.16	119.66
3	B	502	RFP	O1-C1-C2	-3.54	112.20	119.26
2	B	501	FAD	C4X-N5-C5X	3.54	120.30	116.77
3	C	502	RFP	C25-O7-C35	3.51	123.15	117.72
2	C	501	FAD	C4X-N5-C5X	3.51	120.28	116.77
2	A	501	FAD	C5X-C9A-N10	3.45	120.22	117.72
3	A	502	RFP	O4-C11-C12	3.45	127.58	120.56
2	B	501	FAD	C5X-C9A-N10	3.44	120.21	117.72
2	A	501	FAD	C4X-N5-C5X	3.44	120.21	116.77
3	A	502	RFP	C20-C19-C18	-3.43	118.94	126.16
3	C	502	RFP	O1-C1-C2	-3.35	112.58	119.26
3	C	502	RFP	O3-C12-C11	3.31	110.00	104.55
3	B	502	RFP	C20-C21-C22	3.29	121.66	114.96

*Continued on next page...*

*Continued from previous page...*

Mol	Chain	Res	Type	Atoms	Z	Observed(°)	Ideal(°)
3	B	502	RFP	O4-C11-C12	3.24	127.16	120.56
3	A	502	RFP	C8-C9-C10	3.22	126.00	119.41
3	B	502	RFP	C18-C17-C16	-3.20	117.21	126.61
2	C	501	FAD	C5X-C9A-N10	3.19	120.03	117.72
3	C	502	RFP	O4-C11-C12	3.16	126.99	120.56
3	C	502	RFP	C34-C26-C25	-3.10	105.85	111.40
3	B	502	RFP	C8-C9-C10	3.08	125.71	119.41
3	C	502	RFP	O7-C25-C26	3.02	114.54	107.50
3	A	502	RFP	C5-C10-C4	3.01	127.18	124.03
3	C	502	RFP	C8-C9-C10	2.96	125.47	119.41
3	C	502	RFP	C5-C10-C4	2.88	127.05	124.03
3	A	502	RFP	O7-C25-C26	2.84	114.12	107.50
3	B	502	RFP	C26-C25-C24	-2.82	108.92	114.68
3	B	502	RFP	C5-C10-C4	2.82	126.97	124.03
3	B	502	RFP	O7-C25-C24	2.81	114.05	107.50
3	B	502	RFP	C2-C1-C9	-2.81	113.72	120.73
3	A	502	RFP	C2-C1-C9	-2.78	113.78	120.73
3	A	502	RFP	C18-C17-C16	-2.78	118.43	126.61
3	C	502	RFP	O7-C25-C24	2.77	113.94	107.50
3	C	502	RFP	C2-C1-C9	-2.68	114.04	120.73
3	B	502	RFP	O3-C12-C11	2.61	108.84	104.55
3	C	502	RFP	C23-C22-C21	-2.57	107.37	112.54
3	B	502	RFP	C34-C26-C25	-2.50	106.91	111.40
3	A	502	RFP	C13-C12-C11	-2.49	107.72	113.90
3	A	502	RFP	O3-C6-C7	2.44	125.34	121.14
2	B	501	FAD	C4X-C4-N3	-2.42	120.12	123.43
3	A	502	RFP	C24-C23-C22	-2.39	111.42	115.43
3	A	502	RFP	O3-C12-C11	2.37	108.45	104.55
3	C	502	RFP	O3-C6-C7	2.36	125.19	121.14
2	B	501	FAD	C1'-N10-C10	2.34	120.50	118.41
3	A	502	RFP	C30-C16-C15	2.34	121.18	115.28
3	C	502	RFP	C21-C20-C19	2.31	116.87	111.42
3	A	502	RFP	O7-C25-C24	2.30	112.86	107.50
3	A	502	RFP	C20-C21-C22	-2.29	110.29	114.96
2	A	501	FAD	C4X-C4-N3	-2.28	120.32	123.43
3	A	502	RFP	C12-O3-C6	-2.26	103.86	107.68
3	B	502	RFP	O3-C6-C7	2.26	125.03	121.14
3	B	502	RFP	C30-C16-C15	2.26	120.99	115.28
3	C	502	RFP	C24-C23-C22	-2.24	111.67	115.43
3	C	502	RFP	C13-C12-C11	-2.23	108.36	113.90
3	C	502	RFP	C32-C22-C23	-2.23	106.88	111.39
3	A	502	RFP	O4-C11-C5	-2.22	127.58	131.81

*Continued on next page...*

*Continued from previous page...*

Mol	Chain	Res	Type	Atoms	Z	Observed(°)	Ideal(°)
2	A	501	FAD	C1'-N10-C10	2.22	120.40	118.41
2	A	501	FAD	C5'-C4'-C3'	-2.22	107.92	112.20
3	B	502	RFP	C26-C27-C28	-2.19	107.34	112.13
3	B	502	RFP	O4-C11-C5	-2.19	127.63	131.81
2	C	501	FAD	C4X-C4-N3	-2.16	120.48	123.43
3	B	502	RFP	C13-C12-C11	-2.14	108.59	113.90
3	A	502	RFP	C26-C27-C28	-2.13	107.48	112.13
3	B	502	RFP	C12-O5-C29	-2.11	112.62	117.84
3	A	502	RFP	C12-O5-C29	-2.09	112.67	117.84
2	C	501	FAD	C4'-C3'-C2'	-2.09	109.03	113.36
3	C	502	RFP	C12-O3-C6	-2.08	104.17	107.68
3	A	502	RFP	C3-C4-C10	-2.08	119.48	121.20
3	C	502	RFP	C26-C27-C28	2.07	116.65	112.13
3	B	502	RFP	C3-C4-C10	-2.07	119.49	121.20
3	C	502	RFP	O4-C11-C5	-2.06	127.88	131.81
3	B	502	RFP	C31-C20-C21	2.02	115.54	111.31
3	A	502	RFP	C23-C22-C21	-2.01	108.49	112.54

There are no chirality outliers.

All (101) torsion outliers are listed below:

Mol	Chain	Res	Type	Atoms
3	B	502	RFP	C4-C3-C43-N2
3	B	502	RFP	C20-C21-C22-C23
3	B	502	RFP	C20-C21-C22-C32
3	B	502	RFP	O10-C21-C22-C23
3	B	502	RFP	C32-C22-C23-C24
3	B	502	RFP	C26-C25-O7-C35
3	B	502	RFP	C26-C27-O6-C37
3	B	502	RFP	C28-C27-O6-C37
2	B	501	FAD	C5B-O5B-PA-O1A
2	B	501	FAD	C5B-O5B-PA-O2A
2	B	501	FAD	O4B-C4B-C5B-O5B
2	B	501	FAD	O4'-C4'-C5'-O5'
2	C	501	FAD	C5B-O5B-PA-O1A
2	C	501	FAD	C5B-O5B-PA-O2A
2	C	501	FAD	O4B-C4B-C5B-O5B
2	A	501	FAD	C5B-O5B-PA-O2A
3	C	502	RFP	C4-C3-C43-N2
3	C	502	RFP	C16-C17-C18-C19
3	C	502	RFP	C31-C20-C21-C22
3	C	502	RFP	C31-C20-C21-O10

*Continued on next page...*

*Continued from previous page...*

Mol	Chain	Res	Type	Atoms
3	C	502	RFP	C22-C23-C24-C25
3	C	502	RFP	C22-C23-C24-C33
3	C	502	RFP	O9-C23-C24-C25
3	C	502	RFP	O9-C23-C24-C33
3	A	502	RFP	C4-C3-C43-N2
3	A	502	RFP	C20-C21-C22-C23
3	A	502	RFP	C20-C21-C22-C32
3	A	502	RFP	O10-C21-C22-C23
3	A	502	RFP	O10-C21-C22-C32
3	A	502	RFP	C22-C23-C24-C25
3	A	502	RFP	C22-C23-C24-C33
3	A	502	RFP	O9-C23-C24-C25
3	A	502	RFP	O9-C23-C24-C33
3	A	502	RFP	C33-C24-C25-O7
3	A	502	RFP	C26-C25-O7-C35
3	A	502	RFP	C26-C27-O6-C37
3	A	502	RFP	C28-C27-O6-C37
3	C	502	RFP	C36-C35-O7-C25
3	B	502	RFP	O10-C21-C22-C32
3	B	502	RFP	C32-C22-C23-O9
3	C	502	RFP	C32-C22-C23-O9
3	C	502	RFP	C21-C22-C23-O9
3	B	502	RFP	C22-C23-C24-C33
3	C	502	RFP	C32-C22-C23-C24
3	B	502	RFP	C21-C22-C23-C24
3	B	502	RFP	C22-C23-C24-C25
3	C	502	RFP	C21-C22-C23-C24
2	C	501	FAD	C3B-C4B-C5B-O5B
2	A	501	FAD	O4B-C4B-C5B-O5B
2	A	501	FAD	C3B-C4B-C5B-O5B
2	C	501	FAD	C2'-C3'-C4'-O4'
2	C	501	FAD	C2'-C3'-C4'-C5'
3	C	502	RFP	O8-C35-O7-C25
2	B	501	FAD	C3B-C4B-C5B-O5B
3	A	502	RFP	C16-C17-C18-C19
2	C	501	FAD	O3'-C3'-C4'-C5'
3	B	502	RFP	O9-C23-C24-C33
3	A	502	RFP	C3-C2-N1-C15
3	B	502	RFP	C21-C22-C23-O9
3	C	502	RFP	C19-C20-C21-O10
3	C	502	RFP	C19-C20-C21-C22
3	B	502	RFP	O9-C23-C24-C25

*Continued on next page...*



*Continued from previous page...*

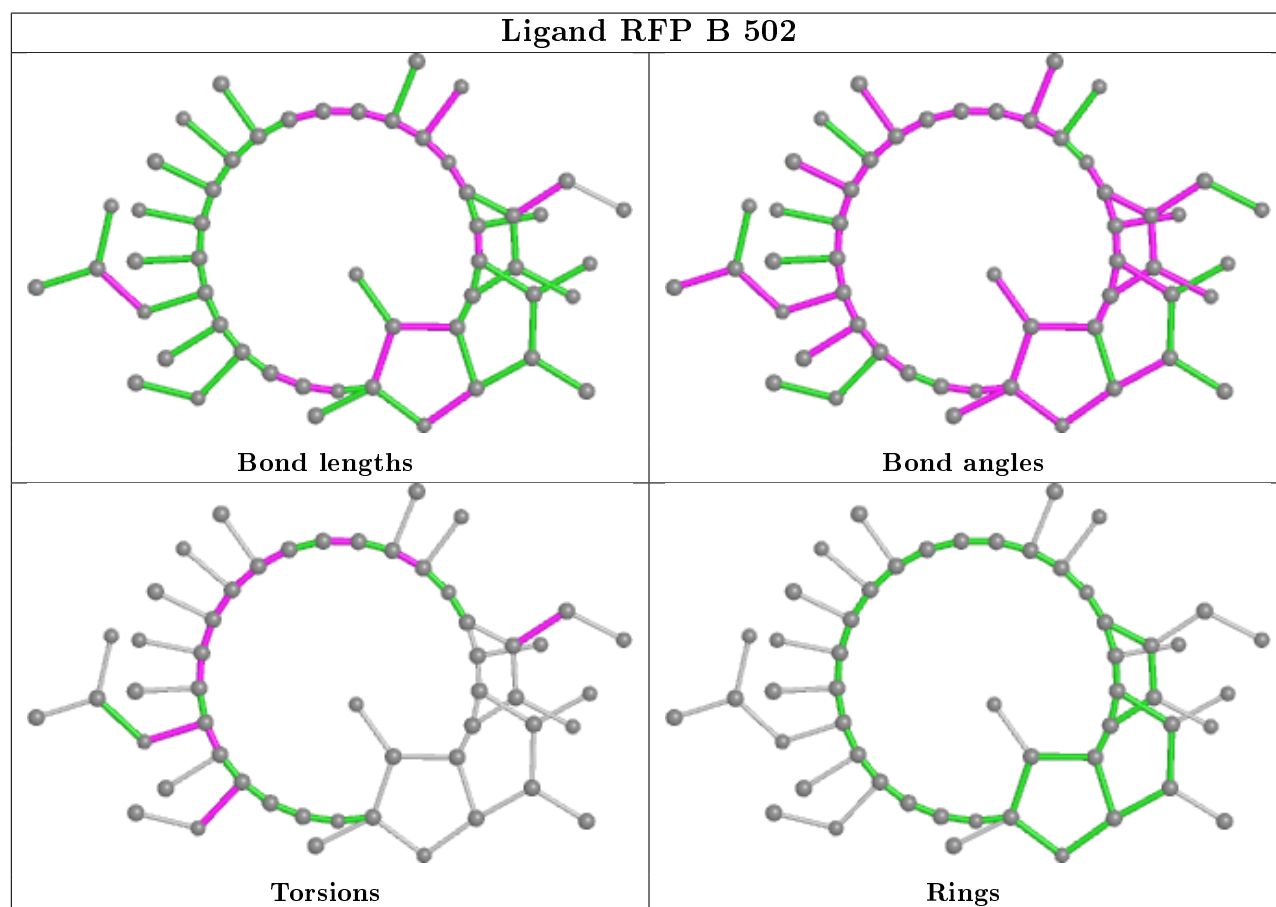
Mol	Chain	Res	Type	Atoms
2	C	501	FAD	O4'-C4'-C5'-O5'
3	C	502	RFP	C24-C25-O7-C35
3	C	502	RFP	C26-C25-O7-C35
3	B	502	RFP	C18-C19-C20-C31
2	C	501	FAD	O3'-C3'-C4'-O4'
2	B	501	FAD	C3'-C4'-C5'-O5'
3	C	502	RFP	C26-C27-C28-C29
3	A	502	RFP	C24-C25-O7-C35
3	B	502	RFP	C24-C25-O7-C35
2	B	501	FAD	P-O3P-PA-O5B
2	C	501	FAD	P-O3P-PA-O5B
2	A	501	FAD	P-O3P-PA-O5B
2	B	501	FAD	C4'-C5'-O5'-P
2	C	501	FAD	C5'-O5'-P-O3P
2	A	501	FAD	C5B-O5B-PA-O3P
2	A	501	FAD	C4'-C5'-O5'-P
2	A	501	FAD	C5B-O5B-PA-O1A
3	C	502	RFP	O6-C27-C28-C29
3	B	502	RFP	O7-C25-C26-C27
3	B	502	RFP	O7-C25-C26-C34
2	A	501	FAD	O3'-C3'-C4'-C5'
3	A	502	RFP	C23-C24-C25-O7
3	C	502	RFP	N1-C15-C16-C17
3	C	502	RFP	O11-C15-C16-C17
2	A	501	FAD	C2'-C3'-C4'-O4'
3	C	502	RFP	C28-C27-O6-C37
3	C	502	RFP	C25-C26-C27-O6
3	B	502	RFP	N1-C15-C16-C30
3	B	502	RFP	O11-C15-C16-C30
3	B	502	RFP	C16-C17-C18-C19
3	B	502	RFP	O11-C15-C16-C17
2	A	501	FAD	O3'-C3'-C4'-O4'
2	A	501	FAD	C2'-C3'-C4'-C5'
2	B	501	FAD	C5B-O5B-PA-O3P
2	C	501	FAD	C5B-O5B-PA-O3P
2	B	501	FAD	O3'-C3'-C4'-C5'
3	B	502	RFP	C19-C20-C21-O10
2	C	501	FAD	PA-O3P-P-O1P
3	C	502	RFP	C26-C27-O6-C37

There are no ring outliers.

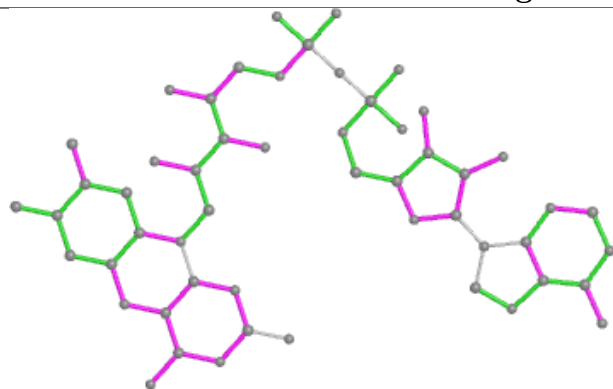
6 monomers are involved in 23 short contacts:

Mol	Chain	Res	Type	Clashes	Symm-Clashes
3	B	502	RFP	7	0
2	B	501	FAD	2	0
2	C	501	FAD	3	0
2	A	501	FAD	3	0
3	C	502	RFP	3	0
3	A	502	RFP	6	0

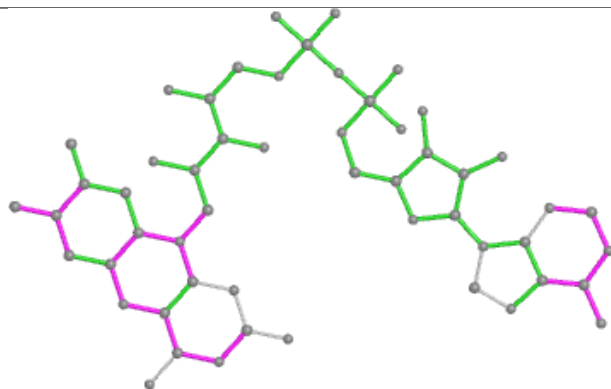
The following is a two-dimensional graphical depiction of Mogul quality analysis of bond lengths, bond angles, torsion angles, and ring geometry for all instances of the Ligand of Interest. In addition, ligands with molecular weight > 250 and outliers as shown on the validation Tables will also be included. For torsion angles, if less than 5% of the Mogul distribution of torsion angles is within 10 degrees of the torsion angle in question, then that torsion angle is considered an outlier. Any bond that is central to one or more torsion angles identified as an outlier by Mogul will be highlighted in the graph. For rings, the root-mean-square deviation (RMSD) between the ring in question and similar rings identified by Mogul is calculated over all ring torsion angles. If the average RMSD is greater than 60 degrees and the minimal RMSD between the ring in question and any Mogul-identified rings is also greater than 60 degrees, then that ring is considered an outlier. The outliers are highlighted in purple. The color gray indicates Mogul did not find sufficient equivalents in the CSD to analyse the geometry.



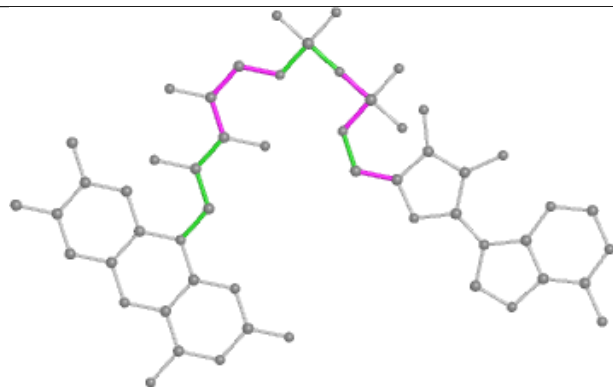
## Ligand FAD B 501



Bond lengths



Bond angles

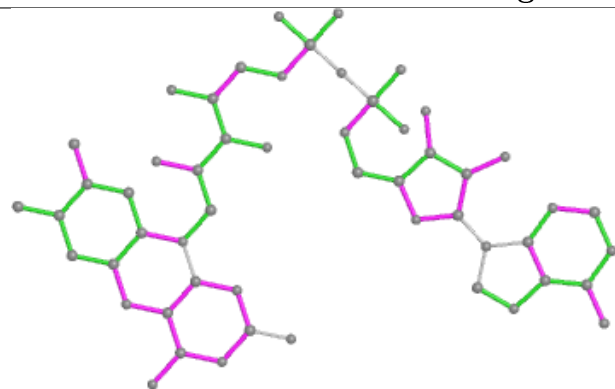


Torsions

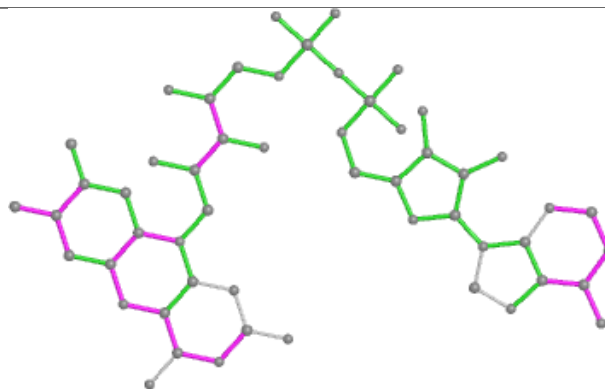


Rings

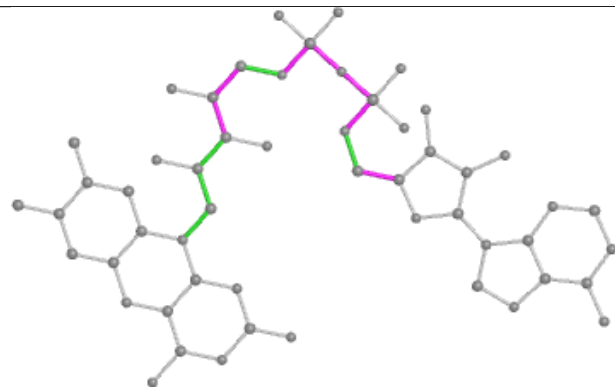
## Ligand FAD C 501



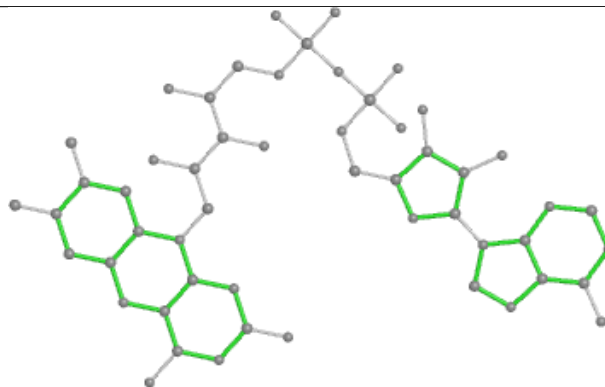
Bond lengths



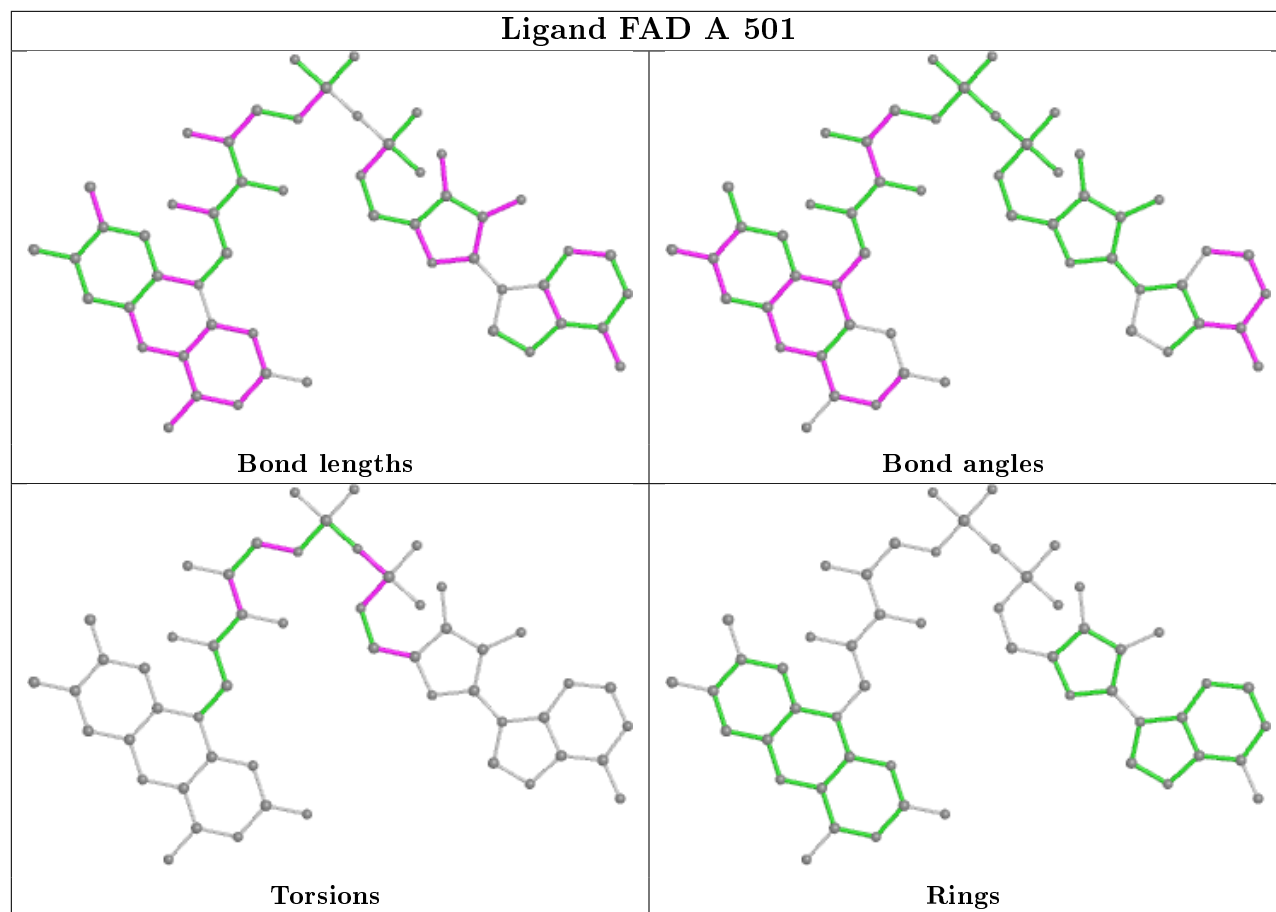
Bond angles

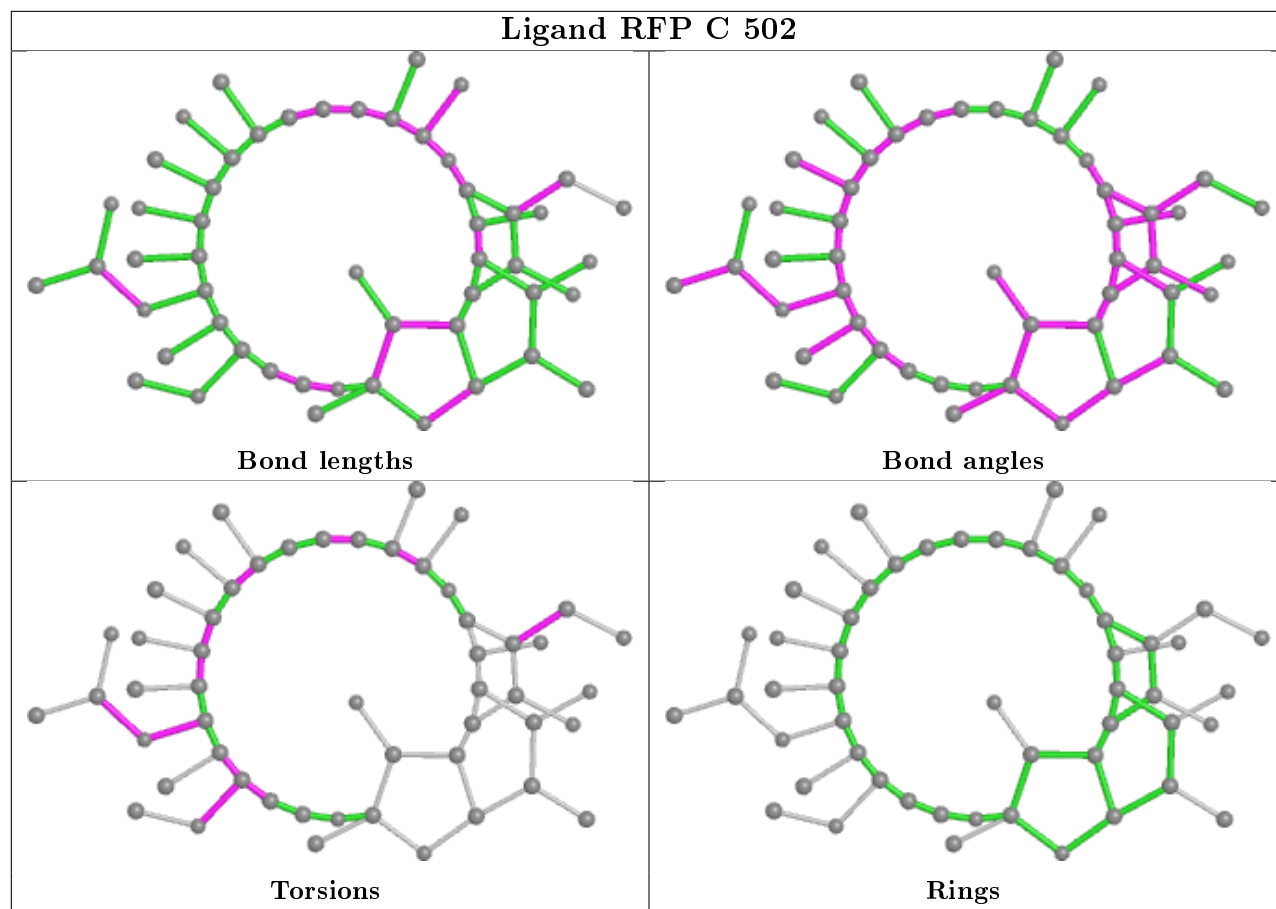


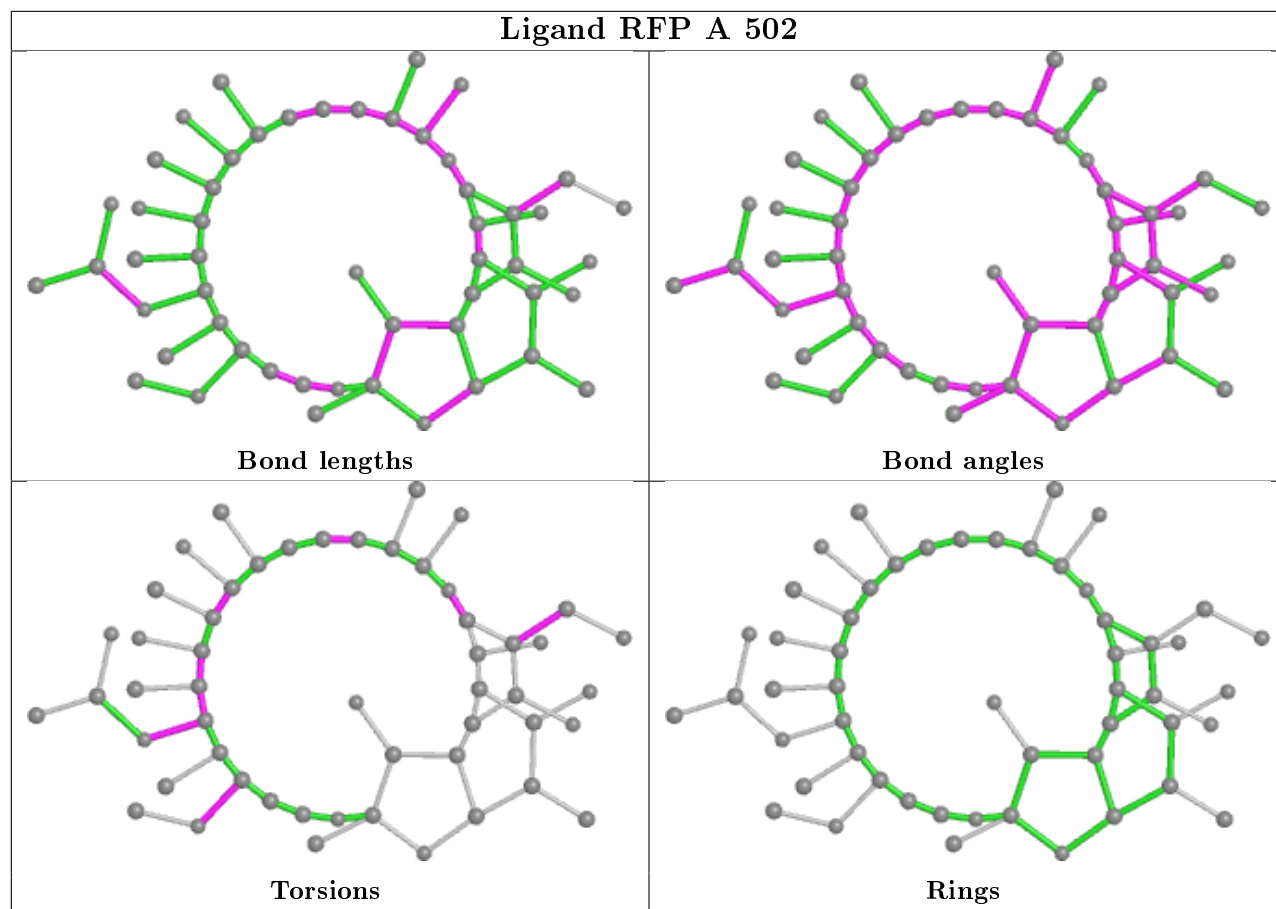
Torsions



Rings







## 5.7 Other polymers [i](#)

There are no such residues in this entry.

## 5.8 Polymer linkage issues [i](#)

There are no chain breaks in this entry.

## 6 Fit of model and data

### 6.1 Protein, DNA and RNA chains

In the following table, the column labelled ‘#RSRZ> 2’ contains the number (and percentage) of RSRZ outliers, followed by percent RSRZ outliers for the chain as percentile scores relative to all X-ray entries and entries of similar resolution. The OWAB column contains the minimum, median, 95<sup>th</sup> percentile and maximum values of the occupancy-weighted average B-factor per residue. The column labelled ‘Q< 0.9’ lists the number of (and percentage) of residues with an average occupancy less than 0.9.

Mol	Chain	Analysed	<RSRZ>	#RSRZ>2	OWAB(Å <sup>2</sup> )	Q<0.9
1	A	474/476 (99%)	-0.13	10 (2%) 63 62	18, 49, 115, 220	0
1	B	474/476 (99%)	-0.15	14 (2%) 50 49	22, 48, 108, 159	0
1	C	468/476 (98%)	-0.08	10 (2%) 63 62	24, 56, 120, 175	0
All	All	1416/1428 (99%)	-0.12	34 (2%) 59 57	18, 51, 116, 220	0

All (34) RSRZ outliers are listed below:

Mol	Chain	Res	Type	RSRZ
1	A	249	HIS	7.3
1	B	207	LEU	4.8
1	B	249	HIS	4.6
1	B	208	GLY	3.5
1	A	248	VAL	3.4
1	B	209	ASP	3.2
1	C	227	ALA	3.1
1	C	184	SER	3.0
1	B	222	ALA	3.0
1	B	228	SER	3.0
1	B	251	PRO	2.9
1	C	246	PHE	2.8
1	A	188	LEU	2.7
1	A	208	GLY	2.6
1	C	252	ARG	2.6
1	A	224	ASP	2.5
1	B	226	THR	2.5
1	C	223	GLU	2.5
1	B	210	GLY	2.4
1	A	240	ALA	2.4
1	A	423	ALA	2.4
1	C	211	VAL	2.4
1	C	243	GLY	2.4

*Continued on next page...*



*Continued from previous page...*

Mol	Chain	Res	Type	RSRZ
1	C	193	THR	2.4
1	C	435	VAL	2.3
1	B	227	ALA	2.2
1	B	211	VAL	2.2
1	A	209	ASP	2.1
1	A	400	GLY	2.1
1	A	179	MET	2.1
1	C	206	PRO	2.1
1	B	38	ARG	2.0
1	B	242	ALA	2.0
1	B	179	MET	2.0

## 6.2 Non-standard residues in protein, DNA, RNA chains [i](#)

There are no non-standard protein/DNA/RNA residues in this entry.

## 6.3 Carbohydrates [i](#)

There are no carbohydrates in this entry.

## 6.4 Ligands [i](#)

In the following table, the Atoms column lists the number of modelled atoms in the group and the number defined in the chemical component dictionary. The B-factors column lists the minimum, median, 95<sup>th</sup> percentile and maximum values of B factors of atoms in the group. The column labelled 'Q<0.9' lists the number of atoms with occupancy less than 0.9.

Mol	Type	Chain	Res	Atoms	RSCC	RSR	B-factors(Å <sup>2</sup> )	Q<0.9
4	CL	B	503	1/1	0.60	0.35	82,82,82,82	1
4	CL	A	506	1/1	0.75	0.19	63,63,63,63	0
4	CL	C	504	1/1	0.76	0.24	64,64,64,64	0
4	CL	C	503	1/1	0.76	0.19	57,57,57,57	0
4	CL	B	504	1/1	0.77	0.19	56,56,56,56	0
4	CL	C	505	1/1	0.78	0.14	44,44,44,44	0
3	RFP	C	502	52/59	0.86	0.28	62,89,111,117	0
3	RFP	B	502	52/59	0.87	0.26	49,74,91,98	0
4	CL	A	503	1/1	0.88	0.14	44,44,44,44	0
4	CL	A	504	1/1	0.89	0.30	48,48,48,48	0
4	CL	B	505	1/1	0.90	0.27	61,61,61,61	0
3	RFP	A	502	52/59	0.90	0.24	35,62,86,94	0

*Continued on next page...*

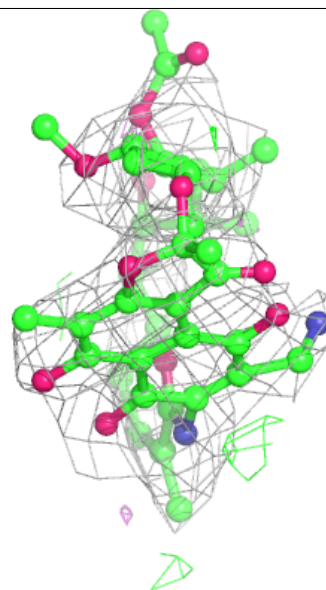
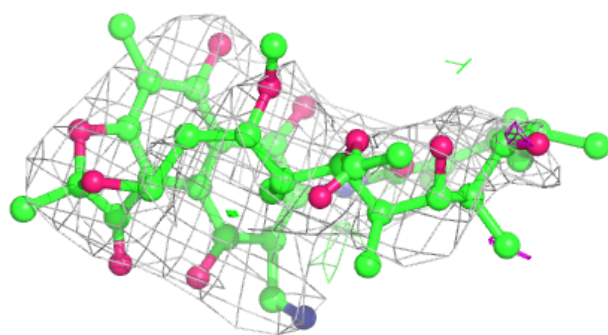
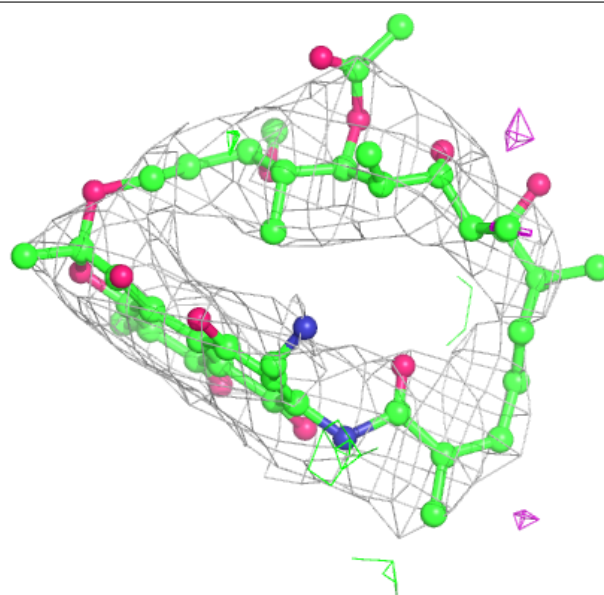
*Continued from previous page...*

Mol	Type	Chain	Res	Atoms	RSCC	RSR	B-factors( $\text{\AA}^2$ )	Q<0.9
2	FAD	C	501	53/53	0.92	0.21	55,84,99,104	0
4	CL	A	505	1/1	0.93	0.10	46,46,46,46	0
2	FAD	B	501	53/53	0.93	0.23	34,59,94,100	0
5	MG	B	506	1/1	0.94	0.07	46,46,46,46	0
2	FAD	A	501	53/53	0.95	0.19	15,59,92,95	0

The following is a graphical depiction of the model fit to experimental electron density of all instances of the Ligand of Interest. In addition, ligands with molecular weight > 250 and outliers as shown on the geometry validation Tables will also be included. Each fit is shown from different orientation to approximate a three-dimensional view.

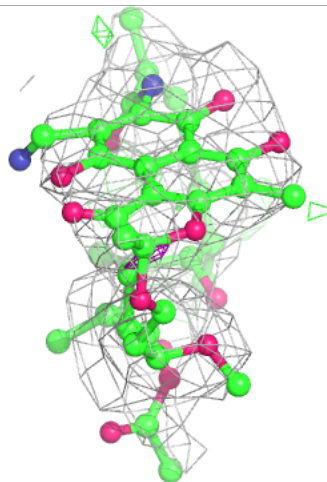
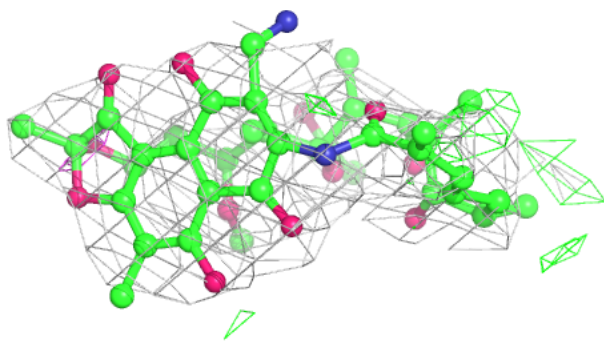
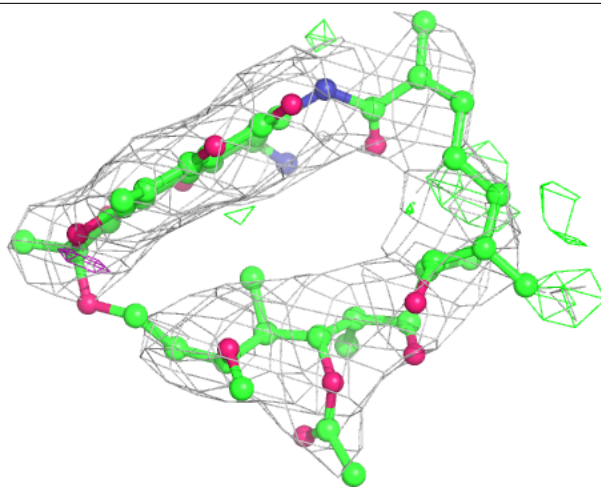
**Electron density around RFP C 502:**

2mF<sub>o</sub>-DF<sub>c</sub> (at 0.7 rmsd) in gray  
mF<sub>o</sub>-DF<sub>c</sub> (at 3 rmsd) in purple (negative)  
and green (positive)



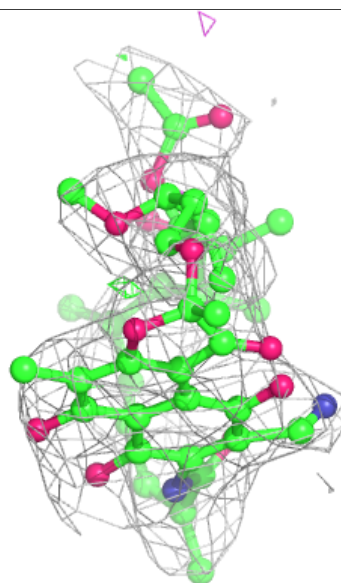
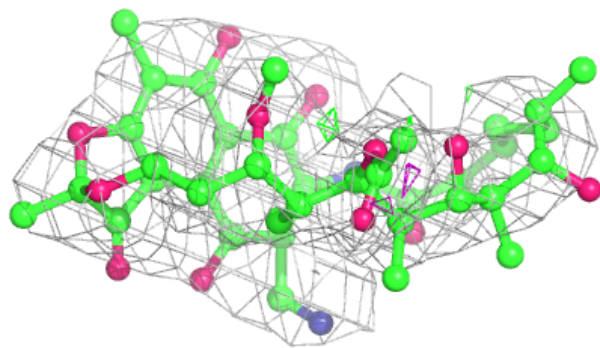
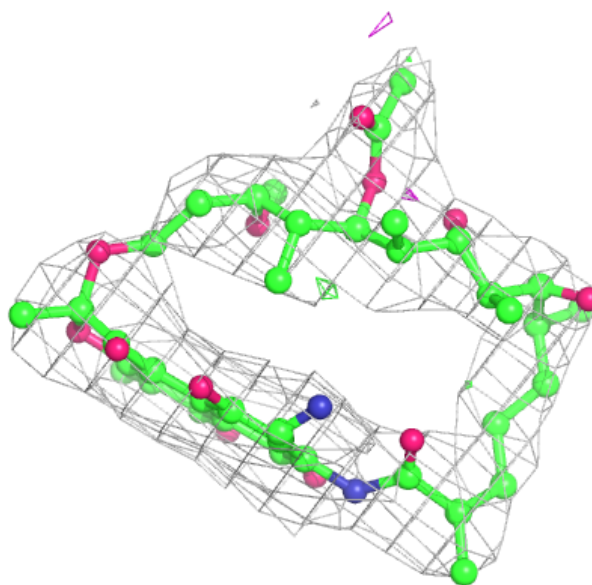
**Electron density around RFP B 502:**

$2mF_o-DF_c$  (at 0.7 rmsd) in gray  
 $mF_o-DF_c$  (at 3 rmsd) in purple (negative)  
and green (positive)



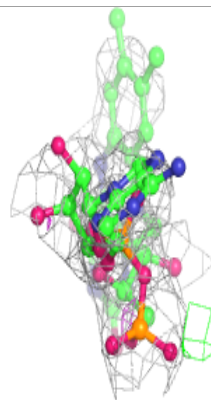
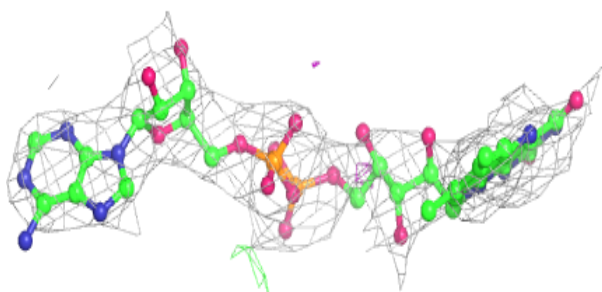
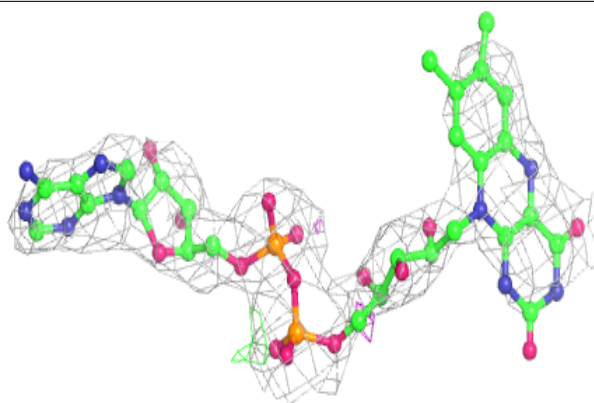
**Electron density around RFP A 502:**

$2mF_o-DF_c$  (at 0.7 rmsd) in gray  
 $mF_o-DF_c$  (at 3 rmsd) in purple (negative)  
and green (positive)

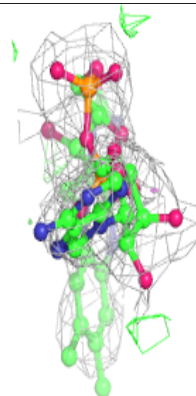
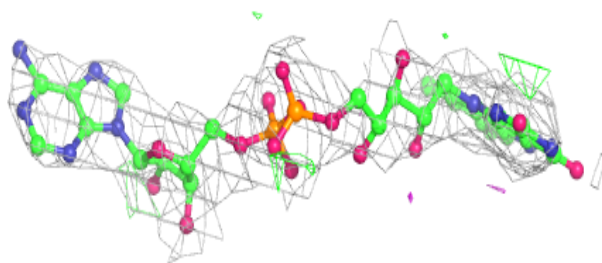
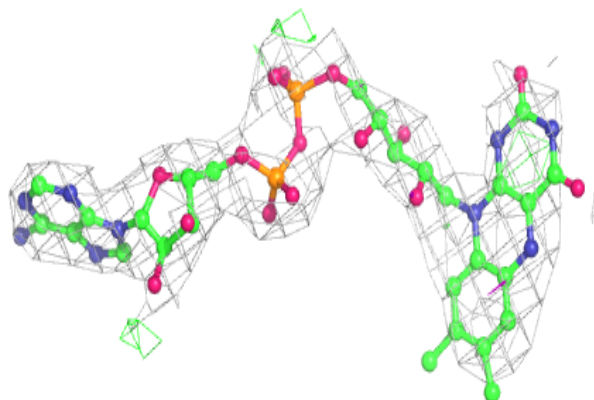


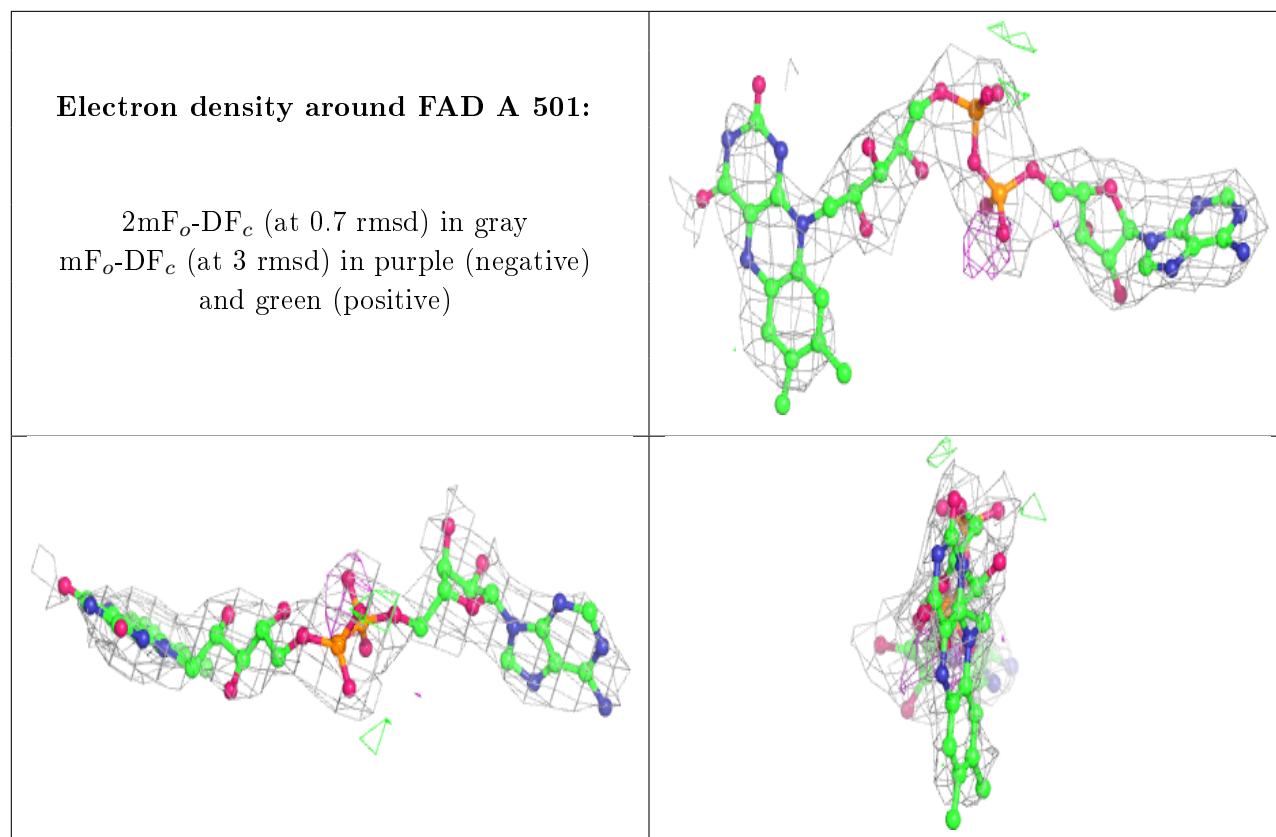
**Electron density around FAD C 501:**

$2mF_o-DF_c$  (at 0.7 rmsd) in gray  
 $mF_o-DF_c$  (at 3 rmsd) in purple (negative)  
and green (positive)

**Electron density around FAD B 501:**

$2mF_o-DF_c$  (at 0.7 rmsd) in gray  
 $mF_o-DF_c$  (at 3 rmsd) in purple (negative)  
and green (positive)





## 6.5 Other polymers [i](#)

There are no such residues in this entry.