



wwPDB X-ray Structure Validation Summary Report ⓘ

Aug 21, 2020 – 06:40 AM BST

PDB ID : 5BS3
Title : Crystal Structure of S.A. gyrase in complex with Compound 7
Authors : Lu, J.; Patel, S.; Soisson, S.
Deposited on : 2015-06-01
Resolution : 2.65 Å(reported)

This is a wwPDB X-ray Structure Validation Summary Report for a publicly released PDB entry.

We welcome your comments at validation@mail.wwpdb.org

A user guide is available at

<https://www.wwpdb.org/validation/2017/XrayValidationReportHelp>

with specific help available everywhere you see the ⓘ symbol.

The following versions of software and data (see [references ⓘ](#)) were used in the production of this report:

MolProbity	:	4.02b-467
Mogul	:	1.8.5 (274361), CSD as541be (2020)
Xtriage (Phenix)	:	1.13
EDS	:	2.13.1
buster-report	:	1.1.7 (2018)
Percentile statistics	:	20191225.v01 (using entries in the PDB archive December 25th 2019)
Refmac	:	5.8.0158
CCP4	:	7.0.044 (Gargrove)
Ideal geometry (proteins)	:	Engh & Huber (2001)
Ideal geometry (DNA, RNA)	:	Parkinson et al. (1996)
Validation Pipeline (wwPDB-VP)	:	2.13.1

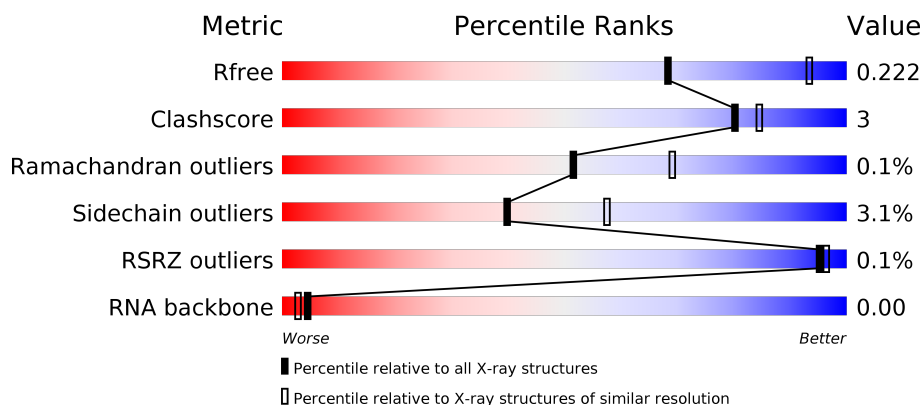
1 Overall quality at a glance

The following experimental techniques were used to determine the structure:

X-RAY DIFFRACTION

The reported resolution of this entry is 2.65 Å.

Percentile scores (ranging between 0-100) for global validation metrics of the entry are shown in the following graphic. The table shows the number of entries on which the scores are based.



Metric	Whole archive (#Entries)	Similar resolution (#Entries, resolution range(Å))
R_{free}	130704	1332 (2.68-2.64)
Clashscore	141614	1374 (2.68-2.64)
Ramachandran outliers	138981	1349 (2.68-2.64)
Sidechain outliers	138945	1349 (2.68-2.64)
RSRZ outliers	127900	1318 (2.68-2.64)
RNA backbone	3102	1010 (2.96-2.36)

The table below summarises the geometric issues observed across the polymeric chains and their fit to the electron density. The red, orange, yellow and green segments on the lower bar indicate the fraction of residues that contain outliers for ≥ 3 , 2, 1 and 0 types of geometric quality criteria respectively. A grey segment represents the fraction of residues that are not modelled. The numeric value for each fraction is indicated below the corresponding segment, with a dot representing fractions $\leq 5\%$. The upper red bar (where present) indicates the fraction of residues that have poor fit to the electron density. The numeric value is given above the bar.

Mol	Chain	Length	Quality of chain
1	B	692	<div> <div style="width: 89%;"></div> <div style="width: 8%;"></div> <div style="width: 3%;"></div> </div> <div>89% 8% .</div>
1	D	692	<div> <div style="width: 86%;"></div> <div style="width: 10%;"></div> <div style="width: 4%;"></div> </div> <div>86% 10% .</div>
2	E	20	<div> <div style="width: 20%;"></div> <div style="width: 70%;"></div> <div style="width: 10%;"></div> </div> <div>20% 70% 10%</div>
2	F	20	<div> <div style="width: 25%;"></div> <div style="width: 60%;"></div> <div style="width: 10%;"></div> <div style="width: 5%;"></div> </div> <div>25% 60% 10% 5%</div>

2 Entry composition

There are 6 unique types of molecules in this entry. The entry contains 11537 atoms, of which 0 are hydrogens and 0 are deuteriums.

In the tables below, the ZeroOcc column contains the number of atoms modelled with zero occupancy, the AltConf column contains the number of residues with at least one atom in alternate conformation and the Trace column contains the number of residues modelled with at most 2 atoms.

- Molecule 1 is a protein called DNA gyrase subunit A and B.

Mol	Chain	Residues	Atoms					ZeroOcc	AltConf	Trace
1	B	670	Total	C	N	O	S	0	0	0
			5262	3280	948	1009	25			
1	D	670	Total	C	N	O	S	0	2	0
			5284	3292	952	1015	25			

There are 10 discrepancies between the modelled and reference sequences:

Chain	Residue	Modelled	Actual	Comment	Reference
B	409	PRO	-	expression tag	UNP P0A0K8
B	544	THR	-	linker	UNP P0A0K8
B	545	GLY	-	linker	UNP P0A0K8
B	1123	PHE	TYR	engineered mutation	UNP P20831
B	1457	THR	ALA	engineered mutation	UNP P20831
D	409	PRO	-	expression tag	UNP P0A0K8
D	544	THR	-	linker	UNP P0A0K8
D	545	GLY	-	linker	UNP P0A0K8
D	1123	PHE	TYR	engineered mutation	UNP P20831
D	1457	THR	ALA	engineered mutation	UNP P20831

- Molecule 2 is a RNA chain called DNA/RNA (5'-R(P*AP*GP*CP*CP*G)-D(P*T)-R(P*A P*GP*GP*GP*CP*CP*C)-D(P*T)-R(P*AP*CP*GP*GP*C)-D(P*T)-3').

Mol	Chain	Residues	Atoms					ZeroOcc	AltConf	Trace
2	E	20	Total	C	N	O	P	0	0	0
			410	193	77	120	20			
2	F	19	Total	C	N	O	P	0	0	0
			390	183	75	113	19			

- Molecule 3 is MANGANESE (II) ION (three-letter code: MN) (formula: Mn).

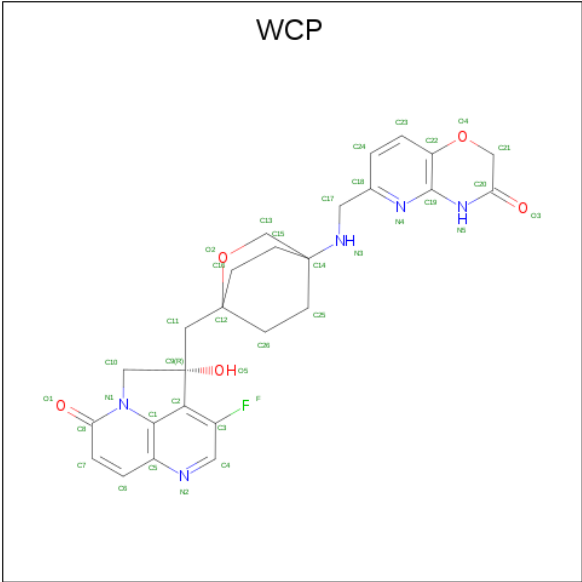
Mol	Chain	Residues	Atoms		ZeroOcc	AltConf
3	B	1	Total	Mn	0	0
			1	1		
3	D	1	Total	Mn	0	0
			1	1		

- Molecule 4 is SULFATE ION (three-letter code: SO4) (formula: O₄S).



Mol	Chain	Residues	Atoms			ZeroOcc	AltConf
4	D	1	Total	O	S	0	0
			5	4	1		
4	E	1	Total	O	S	0	0
			5	4	1		
4	F	1	Total	O	S	0	0
			5	4	1		

- Molecule 5 is (4R)-3-fluoro-4-hydroxy-4-{[(1r,4R)-4-{[(3-oxo-3,4-dihydro-2H-pyrido[3,2-b][1,4]oxazin-6-yl)methyl]amino}-2-oxabicyclo[2.2.2]oct-1-yl)methyl}-4,5-dihydro-7H-pyrrolo[3,2,1-de][1,5]naphthyridin-7-one (three-letter code: WCP) (formula: C₂₆H₂₆FN₅O₅).



Mol	Chain	Residues	Atoms					ZeroOcc	AltConf
5	F	1	Total	C	F	N	O	0	0
			37	26	1	5	5		

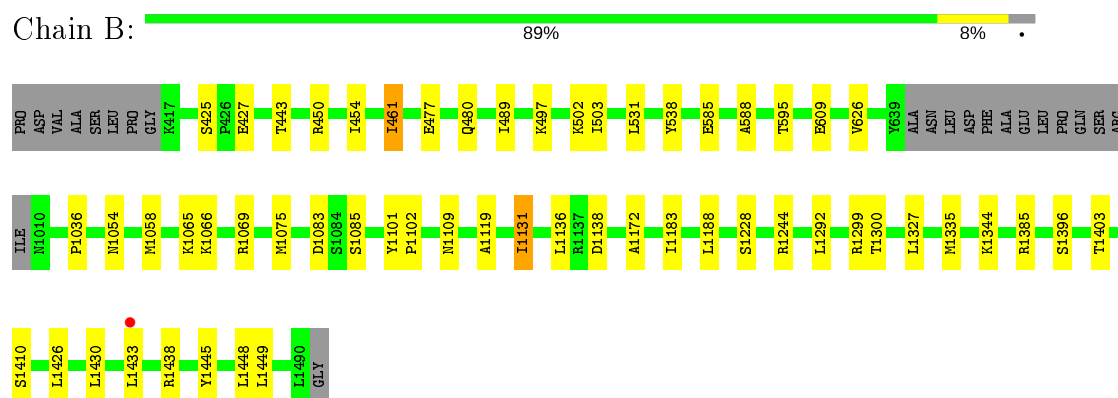
- Molecule 6 is water.

Mol	Chain	Residues	Atoms		ZeroOcc	AltConf
6	B	58	Total	O	0	0
			58	58		
6	D	61	Total	O	0	0
			61	61		
6	E	8	Total	O	0	0
			8	8		
6	F	10	Total	O	0	0
			10	10		

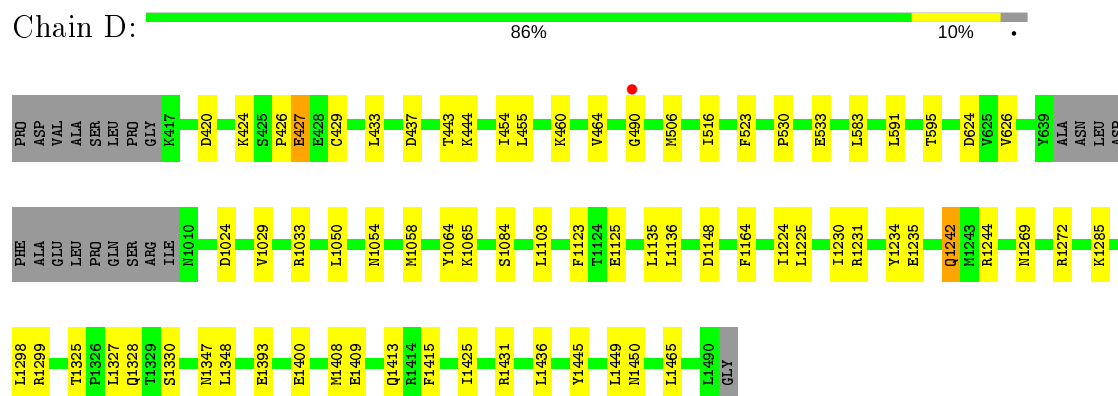
3 Residue-property plots

These plots are drawn for all protein, RNA, DNA and oligosaccharide chains in the entry. The first graphic for a chain summarises the proportions of the various outlier classes displayed in the second graphic. The second graphic shows the sequence view annotated by issues in geometry and electron density. Residues are color-coded according to the number of geometric quality criteria for which they contain at least one outlier: green = 0, yellow = 1, orange = 2 and red = 3 or more. A red dot above a residue indicates a poor fit to the electron density ($RSRZ > 2$). Stretches of 2 or more consecutive residues without any outlier are shown as a green connector. Residues present in the sample, but not in the model, are shown in grey.

- Molecule 1: DNA gyrase subunit A and B



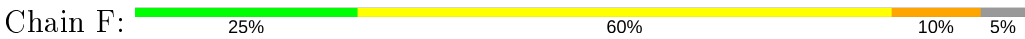
- Molecule 1: DNA gyrase subunit A and B



- Molecule 2: DNA/RNA (5'-R(P*AP*GP*CP*CP*G)-D(P*T)-R(P*AP*GP*GP*GP*CP*CP*C)-D(P*T)-R(P*AP*CP*GP*GP*C)-D(P*T)-3')



- Molecule 2: DNA/RNA (5'-R(P*AP*GP*CP*CP*G)-D(P*T)-R(P*AP*GP*GP*GP*CP*CP*C)-D(P*T)-R(P*AP*CP*GP*GP*C)-D(P*T)-3')



4 Data and refinement statistics

Property	Value	Source
Space group	P 61	Depositor
Cell constants a, b, c, α , β , γ	93.34Å 93.34Å 411.07Å 90.00° 90.00° 120.00°	Depositor
Resolution (Å)	26.71 – 2.65 26.44 – 2.65	Depositor EDS
% Data completeness (in resolution range)	100.0 (26.71-2.65) 100.0 (26.44-2.65)	Depositor EDS
R_{merge}	0.09	Depositor
R_{sym}	(Not available)	Depositor
$\langle I/\sigma(I) \rangle$ ¹	3.32 (at 2.64Å)	Xtriage
Refinement program	BUSTER 2.9.7	Depositor
R, R_{free}	0.170 , 0.213 0.179 , 0.222	Depositor DCC
R_{free} test set	2952 reflections (5.06%)	wwPDB-VP
Wilson B-factor (Å ²)	45.7	Xtriage
Anisotropy	0.081	Xtriage
Bulk solvent k_{sol} (e/Å ³), B_{sol} (Å ²)	0.34 , 19.1	EDS
L-test for twinning ²	$\langle L \rangle = 0.43$, $\langle L^2 \rangle = 0.25$	Xtriage
Estimated twinning fraction	0.165 for h,-h-k,-l	Xtriage
F_o, F_c correlation	0.95	EDS
Total number of atoms	11537	wwPDB-VP
Average B, all atoms (Å ²)	46.0	wwPDB-VP

Xtriage's analysis on translational NCS is as follows: *The largest off-origin peak in the Patterson function is 2.58% of the height of the origin peak. No significant pseudotranslation is detected.*

¹Intensities estimated from amplitudes.

²Theoretical values of $\langle |L| \rangle$, $\langle L^2 \rangle$ for acentric reflections are 0.5, 0.333 respectively for untwinned datasets, and 0.375, 0.2 for perfectly twinned datasets.

5 Model quality [i](#)

5.1 Standard geometry [i](#)

Bond lengths and bond angles in the following residue types are not validated in this section: WCP, MN, SO4

The Z score for a bond length (or angle) is the number of standard deviations the observed value is removed from the expected value. A bond length (or angle) with $|Z| > 5$ is considered an outlier worth inspection. RMSZ is the root-mean-square of all Z scores of the bond lengths (or angles).

Mol	Chain	Bond lengths		Bond angles	
		RMSZ	$\# Z > 5$	RMSZ	$\# Z > 5$
1	B	0.50	0/5333	0.71	0/7193
1	D	0.51	0/5355	0.72	0/7223
2	E	1.14	0/459	2.10	26/706 (3.7%)
2	F	1.08	0/437	1.97	16/672 (2.4%)
All	All	0.57	0/11584	0.91	42/15794 (0.3%)

There are no bond length outliers.

The worst 5 of 42 bond angle outliers are listed below:

Mol	Chain	Res	Type	Atoms	Z	Observed(°)	Ideal(°)
2	F	6	DT	O4'-C1'-N1	8.16	113.71	108.00
2	F	17	G	O4'-C1'-N9	-8.13	101.70	108.20
2	F	14	DT	O4'-C1'-N1	8.11	113.68	108.00
2	F	2	G	O4'-C1'-N9	8.05	114.64	108.20
2	E	1	A	OP1-P-OP2	-7.30	108.64	119.60

There are no chirality outliers.

There are no planarity outliers.

5.2 Too-close contacts [i](#)

In the following table, the Non-H and H(model) columns list the number of non-hydrogen atoms and hydrogen atoms in the chain respectively. The H(added) column lists the number of hydrogen atoms added and optimized by MolProbity. The Clashes column lists the number of clashes within the asymmetric unit, whereas Symm-Clashes lists symmetry related clashes.

Mol	Chain	Non-H	H(model)	H(added)	Clashes	Symm-Clashes
1	B	5262	0	5256	24	0
1	D	5284	0	5273	38	0

Continued on next page...

Continued from previous page...

Mol	Chain	Non-H	H(model)	H(added)	Clashes	Symm-Clashes
2	E	410	0	224	2	0
2	F	390	0	212	3	0
3	B	1	0	0	0	0
3	D	1	0	0	0	0
4	D	5	0	0	0	0
4	E	5	0	0	0	0
4	F	5	0	0	0	0
5	F	37	0	26	5	0
6	B	58	0	0	0	0
6	D	61	0	0	0	0
6	E	8	0	0	0	0
6	F	10	0	0	0	0
All	All	11537	0	10991	61	0

The all-atom clashscore is defined as the number of clashes found per 1000 atoms (including hydrogen atoms). The all-atom clashscore for this structure is 3.

The worst 5 of 61 close contacts within the same asymmetric unit are listed below, sorted by their clash magnitude.

Atom-1	Atom-2	Interatomic distance (Å)	Clash overlap (Å)
1:B:1058:MET:HG2	1:B:1065:LYS:HG3	1.74	0.68
5:F:101:WCP:H19	5:F:101:WCP:C10	2.25	0.66
1:D:1058:MET:HG2	1:D:1065:LYS:HG3	1.77	0.66
1:B:1403:THR:HG22	1:D:1436:LEU:HD22	1.78	0.64
5:F:101:WCP:H27	5:F:101:WCP:H19	1.83	0.61

There are no symmetry-related clashes.

5.3 Torsion angles [i](#)

5.3.1 Protein backbone [i](#)

In the following table, the Percentiles column shows the percent Ramachandran outliers of the chain as a percentile score with respect to all X-ray entries followed by that with respect to entries of similar resolution.

The Analysed column shows the number of residues for which the backbone conformation was analysed, and the total number of residues.

Mol	Chain	Analysed	Favoured	Allowed	Outliers	Percentiles	
1	B	664/692 (96%)	642 (97%)	22 (3%)	0	100	100
1	D	666/692 (96%)	643 (96%)	22 (3%)	1 (0%)	47	64
All	All	1330/1384 (96%)	1285 (97%)	44 (3%)	1 (0%)	51	69

All (1) Ramachandran outliers are listed below:

Mol	Chain	Res	Type
1	D	490	GLY

5.3.2 Protein sidechains ⓘ

In the following table, the Percentiles column shows the percent sidechain outliers of the chain as a percentile score with respect to all X-ray entries followed by that with respect to entries of similar resolution.

The Analysed column shows the number of residues for which the sidechain conformation was analysed, and the total number of residues.

Mol	Chain	Analysed	Rotameric	Outliers	Percentiles	
1	B	561/591 (95%)	541 (96%)	20 (4%)	35	51
1	D	564/591 (95%)	549 (97%)	15 (3%)	44	63
All	All	1125/1182 (95%)	1090 (97%)	35 (3%)	40	57

5 of 35 residues with a non-rotameric sidechain are listed below:

Mol	Chain	Res	Type
1	B	1327	LEU
1	B	1448	LEU
1	D	1413	GLN
1	B	1344	LYS
1	B	1396	SER

Some sidechains can be flipped to improve hydrogen bonding and reduce clashes. 5 of 11 such sidechains are listed below:

Mol	Chain	Res	Type
1	B	1010	ASN
1	B	1153	ASN
1	D	605	GLN
1	B	631	GLN
1	D	590	GLN

5.3.3 RNA ⓘ

Mol	Chain	Analysed	Backbone Outliers	Pucker Outliers
2	E	0/20	-	-
2	F	0/20	-	-
All	All	0/40	-	-

There are no RNA backbone outliers to report.

There are no RNA pucker outliers to report.

5.4 Non-standard residues in protein, DNA, RNA chains ⓘ

There are no non-standard protein/DNA/RNA residues in this entry.

5.5 Carbohydrates ⓘ

There are no monosaccharides in this entry.

5.6 Ligand geometry ⓘ

Of 6 ligands modelled in this entry, 2 are monoatomic - leaving 4 for Mogul analysis.

In the following table, the Counts columns list the number of bonds (or angles) for which Mogul statistics could be retrieved, the number of bonds (or angles) that are observed in the model and the number of bonds (or angles) that are defined in the Chemical Component Dictionary. The Link column lists molecule types, if any, to which the group is linked. The Z score for a bond length (or angle) is the number of standard deviations the observed value is removed from the expected value. A bond length (or angle) with $|Z| > 2$ is considered an outlier worth inspection. RMSZ is the root-mean-square of all Z scores of the bond lengths (or angles).

Mol	Type	Chain	Res	Link	Bond lengths			Bond angles		
					Counts	RMSZ	$\# Z > 2$	Counts	RMSZ	$\# Z > 2$
5	WCP	F	101	-	35,43,43	1.77	6 (17%)	44,68,68	2.01	15 (34%)
4	SO4	F	102	-	4,4,4	0.31	0	6,6,6	0.14	0
4	SO4	E	101	-	4,4,4	0.34	0	6,6,6	0.20	0
4	SO4	D	1502	-	4,4,4	0.19	0	6,6,6	0.06	0

In the following table, the Chirals column lists the number of chiral outliers, the number of chiral centers analysed, the number of these observed in the model and the number defined in the Chemical Component Dictionary. Similar counts are reported in the Torsion and Rings columns. '-' means no outliers of that kind were identified.

Mol	Type	Chain	Res	Link	Chirals	Torsions	Rings
5	WCP	F	101	-	-	1/12/53/53	0/8/7/7

The worst 5 of 6 bond length outliers are listed below:

Mol	Chain	Res	Type	Atoms	Z	Observed(Å)	Ideal(Å)
5	F	101	WCP	C11-C12	5.43	1.61	1.52
5	F	101	WCP	C13-C14	4.69	1.61	1.53
5	F	101	WCP	C4-C3	4.44	1.44	1.37
5	F	101	WCP	C6-C5	3.33	1.47	1.41
5	F	101	WCP	C8-N1	2.64	1.42	1.38

The worst 5 of 15 bond angle outliers are listed below:

Mol	Chain	Res	Type	Atoms	Z	Observed(°)	Ideal(°)
5	F	101	WCP	C16-C15-C14	-4.52	107.11	113.56
5	F	101	WCP	O2-C12-C26	-4.39	105.97	109.14
5	F	101	WCP	C6-C5-N2	3.91	124.93	118.52
5	F	101	WCP	C26-C25-C14	-3.75	108.21	113.56
5	F	101	WCP	O5-C9-C2	-3.46	103.78	111.84

There are no chirality outliers.

All (1) torsion outliers are listed below:

Mol	Chain	Res	Type	Atoms
5	F	101	WCP	C12-C11-C9-C2

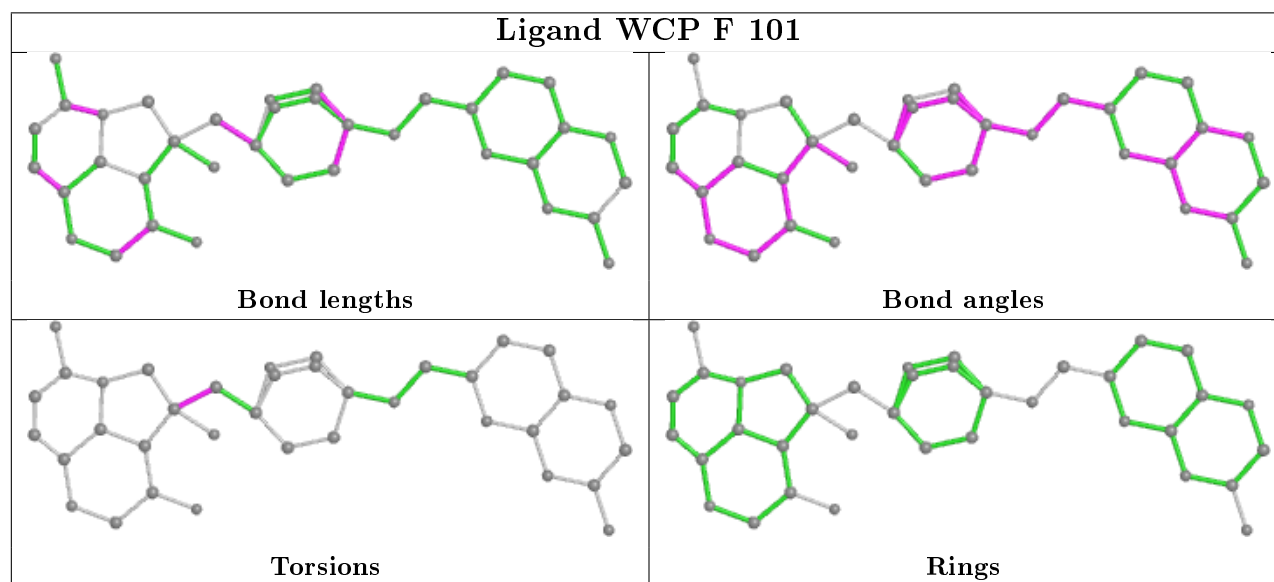
There are no ring outliers.

1 monomer is involved in 5 short contacts:

Mol	Chain	Res	Type	Clashes	Symm-Clashes
5	F	101	WCP	5	0

The following is a two-dimensional graphical depiction of Mogul quality analysis of bond lengths, bond angles, torsion angles, and ring geometry for all instances of the Ligand of Interest. In addition, ligands with molecular weight > 250 and outliers as shown on the validation Tables will also be included. For torsion angles, if less than 5% of the Mogul distribution of torsion angles is within 10 degrees of the torsion angle in question, then that torsion angle is considered an outlier. Any bond that is central to one or more torsion angles identified as an outlier by Mogul will be highlighted in the graph. For rings, the root-mean-square deviation (RMSD) between the ring in question and similar rings identified by Mogul is calculated over all ring torsion angles. If the average RMSD is greater than 60 degrees and the minimal RMSD between the ring in question and any Mogul-identified rings is also greater than 60 degrees, then that ring is considered an outlier.

The outliers are highlighted in purple. The color gray indicates Mogul did not find sufficient equivalents in the CSD to analyse the geometry.



5.7 Other polymers [i](#)

There are no such residues in this entry.

5.8 Polymer linkage issues [i](#)

The following chains have linkage breaks:

Mol	Chain	Number of breaks
1	B	1
1	D	1

All chain breaks are listed below:

Model	Chain	Residue-1	Atom-1	Residue-2	Atom-2	Distance (Å)
1	D	545:GLY	C	580:TYR	N	3.23
1	B	545:GLY	C	580:TYR	N	3.08

6 Fit of model and data [i](#)

6.1 Protein, DNA and RNA chains [i](#)

In the following table, the column labelled ‘#RSRZ> 2’ contains the number (and percentage) of RSRZ outliers, followed by percent RSRZ outliers for the chain as percentile scores relative to all X-ray entries and entries of similar resolution. The OWAB column contains the minimum, median, 95th percentile and maximum values of the occupancy-weighted average B-factor per residue. The column labelled ‘Q< 0.9’ lists the number of (and percentage) of residues with an average occupancy less than 0.9.

Mol	Chain	Analysed	<RSRZ>	#RSRZ>2	OWAB(Å ²)	Q<0.9
1	B	670/692 (96%)	-0.16	1 (0%) 95 96	28, 46, 62, 76	0
1	D	670/692 (96%)	-0.15	1 (0%) 95 96	30, 45, 65, 81	0
2	E	20/20 (100%)	-0.74	0 100 100	30, 39, 51, 57	0
2	F	19/20 (95%)	-0.57	0 100 100	33, 39, 60, 85	0
All	All	1379/1424 (96%)	-0.17	2 (0%) 95 96	28, 45, 64, 85	0

All (2) RSRZ outliers are listed below:

Mol	Chain	Res	Type	RSRZ
1	B	1433	LEU	2.1
1	D	490	GLY	2.1

6.2 Non-standard residues in protein, DNA, RNA chains [i](#)

There are no non-standard protein/DNA/RNA residues in this entry.

6.3 Carbohydrates [i](#)

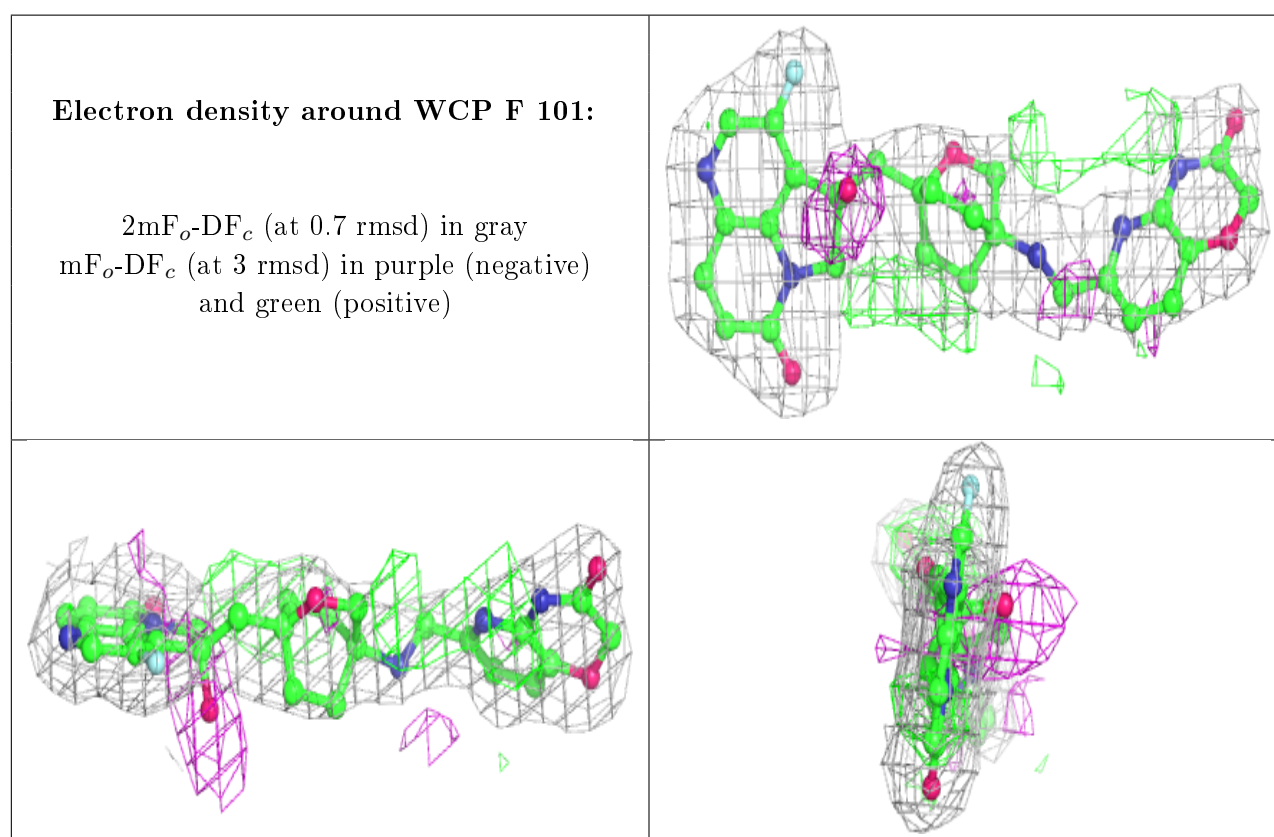
There are no monosaccharides in this entry.

6.4 Ligands [i](#)

In the following table, the Atoms column lists the number of modelled atoms in the group and the number defined in the chemical component dictionary. The B-factors column lists the minimum, median, 95th percentile and maximum values of B factors of atoms in the group. The column labelled ‘Q< 0.9’ lists the number of atoms with occupancy less than 0.9.

Mol	Type	Chain	Res	Atoms	RSCC	RSR	B-factors(\AA^2)	Q<0.9
5	WCP	F	101	37/37	0.90	0.20	42,50,65,67	0
4	SO4	E	101	5/5	0.91	0.15	101,106,106,107	0
4	SO4	F	102	5/5	0.92	0.14	93,97,98,98	0
4	SO4	D	1502	5/5	0.96	0.15	128,132,133,134	0
3	MN	D	1501	1/1	0.98	0.16	44,44,44,44	0
3	MN	B	1501	1/1	1.00	0.17	45,45,45,45	0

The following is a graphical depiction of the model fit to experimental electron density of all instances of the Ligand of Interest. In addition, ligands with molecular weight > 250 and outliers as shown on the geometry validation Tables will also be included. Each fit is shown from different orientation to approximate a three-dimensional view.



6.5 Other polymers [i](#)

There are no such residues in this entry.