



# Full wwPDB X-ray Structure Validation Report ⓘ

Aug 10, 2020 – 05:08 AM BST

PDB ID : 6BSZ  
Title : Human mGlu8 Receptor complexed with glutamate  
Authors : Schkeryantz, J.M.; Chen, Q.; Ho, J.D.; Atwell, S.; Zhang, A.; Vargas, M.C.;  
Wang, J.; Monn, J.A.; Hao, J.  
Deposited on : 2017-12-04  
Resolution : 2.65 Å(reported)

This is a Full wwPDB X-ray Structure Validation Report for a publicly released PDB entry.

We welcome your comments at [validation@mail.wwpdb.org](mailto:validation@mail.wwpdb.org)

A user guide is available at

<https://www.wwpdb.org/validation/2017/XrayValidationReportHelp>

with specific help available everywhere you see the ⓘ symbol.

---

The following versions of software and data (see [references ⓘ](#)) were used in the production of this report:

MolProbity : 4.02b-467  
Mogul : 1.8.5 (274361), CSD as541be (2020)  
Xtriage (Phenix) : 1.13  
EDS : 2.13.1  
Percentile statistics : 20191225.v01 (using entries in the PDB archive December 25th 2019)  
Refmac : 5.8.0158  
CCP4 : 7.0.044 (Gargrove)  
Ideal geometry (proteins) : Engh & Huber (2001)  
Ideal geometry (DNA, RNA) : Parkinson et al. (1996)  
Validation Pipeline (wwPDB-VP) : 2.13.1

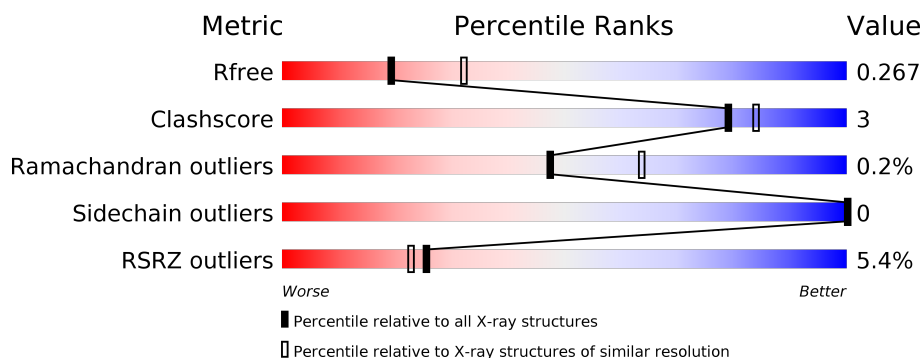
# 1 Overall quality at a glance

The following experimental techniques were used to determine the structure:

## *X-RAY DIFFRACTION*

The reported resolution of this entry is 2.65 Å.

Percentile scores (ranging between 0-100) for global validation metrics of the entry are shown in the following graphic. The table shows the number of entries on which the scores are based.



Metric	Whole archive (#Entries)	Similar resolution (#Entries, resolution range(Å))
$R_{free}$	130704	1332 (2.68-2.64)
Clashscore	141614	1374 (2.68-2.64)
Ramachandran outliers	138981	1349 (2.68-2.64)
Sidechain outliers	138945	1349 (2.68-2.64)
RSRZ outliers	127900	1318 (2.68-2.64)

The table below summarises the geometric issues observed across the polymeric chains and their fit to the electron density. The red, orange, yellow and green segments on the lower bar indicate the fraction of residues that contain outliers for  $\geq 3$ , 2, 1 and 0 types of geometric quality criteria respectively. A grey segment represents the fraction of residues that are not modelled. The numeric value for each fraction is indicated below the corresponding segment, with a dot representing fractions  $\leq 5\%$ . The upper red bar (where present) indicates the fraction of residues that have poor fit to the electron density. The numeric value is given above the bar.

Mol	Chain	Length	Quality of chain
1	A	479	 5% 86% 7% 7%
1	B	479	 5% 83% 8% 10%

## 2 Entry composition [i](#)

There are 5 unique types of molecules in this entry. The entry contains 6966 atoms, of which 0 are hydrogens and 0 are deuteriums.

In the tables below, the ZeroOcc column contains the number of atoms modelled with zero occupancy, the AltConf column contains the number of residues with at least one atom in alternate conformation and the Trace column contains the number of residues modelled with at most 2 atoms.

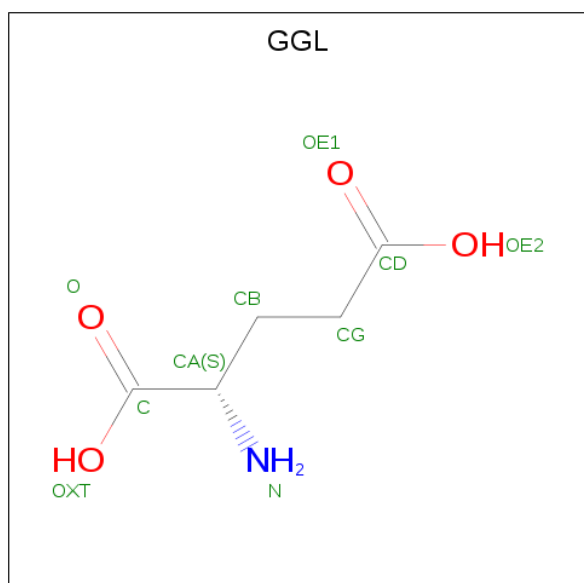
- Molecule 1 is a protein called Metabotropic glutamate receptor 8.

Mol	Chain	Residues	Atoms					ZeroOcc	AltConf	Trace
1	A	445	Total	C	N	O	S	0	1	0
			3427	2188	588	636	15			
1	B	433	Total	C	N	O	S	0	0	0
			3350	2139	570	627	14			

There are 6 discrepancies between the modelled and reference sequences:

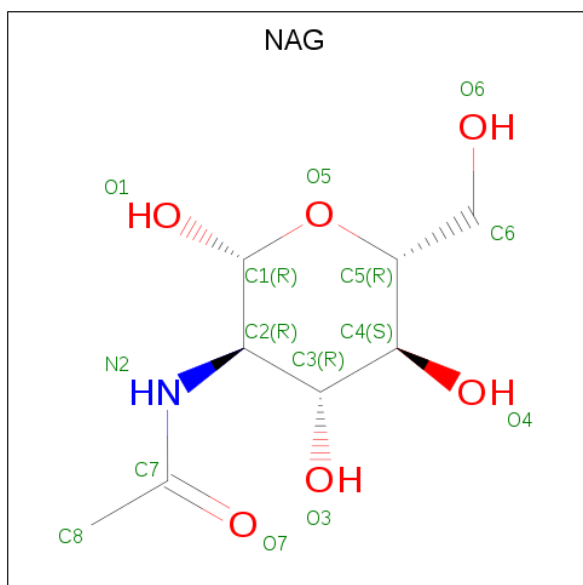
Chain	Residue	Modelled	Actual	Comment	Reference
A	246	SER	CYS	conflict	UNP O00222
A	298	GLN	ASN	conflict	UNP O00222
A	515	GLU	-	expression tag	UNP O00222
B	246	SER	CYS	conflict	UNP O00222
B	298	GLN	ASN	conflict	UNP O00222
B	515	GLU	-	expression tag	UNP O00222

- Molecule 2 is GAMMA-L-GLUTAMIC ACID (three-letter code: GGL) (formula: C<sub>5</sub>H<sub>9</sub>NO<sub>4</sub>).



Mol	Chain	Residues	Atoms				ZeroOcc	AltConf
2	A	1	Total	C	N	O	0	0
			10	5	1	4		
2	B	1	Total	C	N	O	0	0
			10	5	1	4		

- Molecule 3 is 2-acetamido-2-deoxy-beta-D-glucopyranose (three-letter code: NAG) (formula:  $C_8H_{15}NO_6$ ).



Mol	Chain	Residues	Atoms				ZeroOcc	AltConf
3	A	1	Total	C	N	O	0	0
			14	8	1	5		
3	B	1	Total	C	N	O	0	0
			14	8	1	5		

- Molecule 4 is SULFATE ION (three-letter code: SO4) (formula:  $O_4S$ ).



Mol	Chain	Residues	Atoms			ZeroOcc	AltConf
4	A	1	Total	O	S	0	0
			5	4	1		
4	B	1	Total	O	S	0	0
			5	4	1		
4	B	1	Total	O	S	0	0
			5	4	1		
4	B	1	Total	O	S	0	0
			5	4	1		

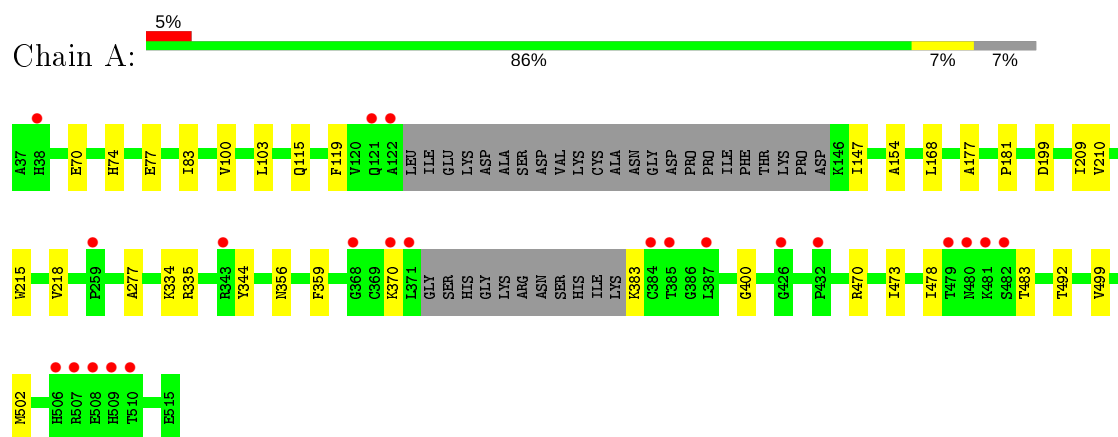
- Molecule 5 is water.

Mol	Chain	Residues	Atoms		ZeroOcc	AltConf
5	A	66	Total	O	0	0
			66	66		
5	B	55	Total	O	0	0
			55	55		

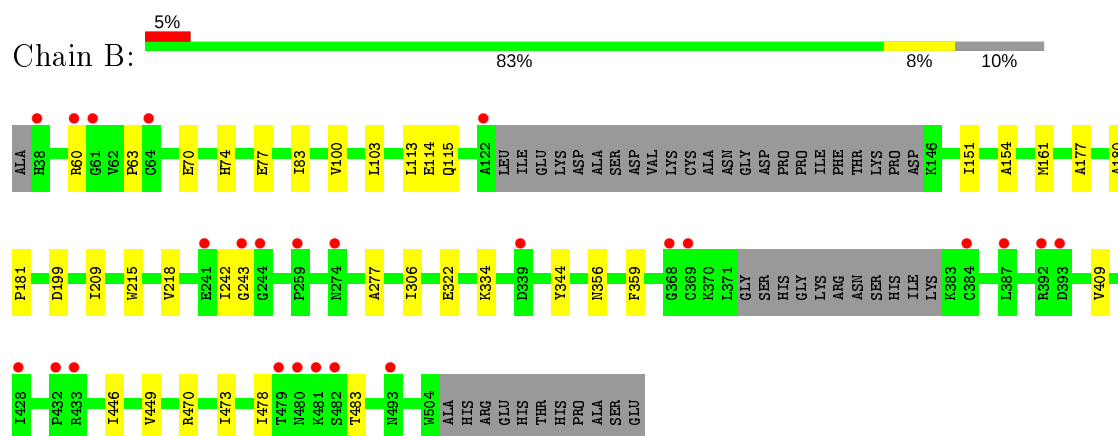
### 3 Residue-property plots [i](#)

These plots are drawn for all protein, RNA, DNA and oligosaccharide chains in the entry. The first graphic for a chain summarises the proportions of the various outlier classes displayed in the second graphic. The second graphic shows the sequence view annotated by issues in geometry and electron density. Residues are color-coded according to the number of geometric quality criteria for which they contain at least one outlier: green = 0, yellow = 1, orange = 2 and red = 3 or more. A red dot above a residue indicates a poor fit to the electron density ( $RSRZ > 2$ ). Stretches of 2 or more consecutive residues without any outlier are shown as a green connector. Residues present in the sample, but not in the model, are shown in grey.

- Molecule 1: Metabotropic glutamate receptor 8



- Molecule 1: Metabotropic glutamate receptor 8



## 4 Data and refinement statistics

Property	Value	Source
Space group	I 2 2 2	Depositor
Cell constants a, b, c, $\alpha$ , $\beta$ , $\gamma$	112.54Å 166.62Å 198.66Å 90.00° 90.00° 90.00°	Depositor
Resolution (Å)	19.91 – 2.65 19.91 – 2.65	Depositor EDS
% Data completeness (in resolution range)	98.8 (19.91-2.65) 98.8 (19.91-2.65)	Depositor EDS
$R_{merge}$	(Not available)	Depositor
$R_{sym}$	(Not available)	Depositor
$\langle I/\sigma(I) \rangle$ <sup>1</sup>	2.56 (at 2.67Å)	Xtriage
Refinement program	REFMAC 5.5.0109	Depositor
R, $R_{free}$	0.250 , 0.275 0.245 , 0.267	Depositor DCC
$R_{free}$ test set	2660 reflections (4.95%)	wwPDB-VP
Wilson B-factor (Å <sup>2</sup> )	44.1	Xtriage
Anisotropy	0.187	Xtriage
Bulk solvent $k_{sol}$ (e/Å <sup>3</sup> ), $B_{sol}$ (Å <sup>2</sup> )	0.35 , 44.3	EDS
L-test for twinning <sup>2</sup>	$\langle  L  \rangle = 0.49$ , $\langle L^2 \rangle = 0.32$	Xtriage
Estimated twinning fraction	No twinning to report.	Xtriage
$F_o, F_c$ correlation	0.90	EDS
Total number of atoms	6966	wwPDB-VP
Average B, all atoms (Å <sup>2</sup> )	38.0	wwPDB-VP

Xtriage's analysis on translational NCS is as follows: *The largest off-origin peak in the Patterson function is 3.31% of the height of the origin peak. No significant pseudotranslation is detected.*

<sup>1</sup>Intensities estimated from amplitudes.

<sup>2</sup>Theoretical values of  $\langle |L| \rangle$ ,  $\langle L^2 \rangle$  for acentric reflections are 0.5, 0.333 respectively for untwinned datasets, and 0.375, 0.2 for perfectly twinned datasets.

## 5 Model quality

### 5.1 Standard geometry

Bond lengths and bond angles in the following residue types are not validated in this section: GGL, NAG, SO4

The Z score for a bond length (or angle) is the number of standard deviations the observed value is removed from the expected value. A bond length (or angle) with  $|Z| > 5$  is considered an outlier worth inspection. RMSZ is the root-mean-square of all Z scores of the bond lengths (or angles).

Mol	Chain	Bond lengths		Bond angles	
		RMSZ	# Z  >5	RMSZ	# Z  >5
1	A	0.30	0/3504	0.43	0/4748
1	B	0.30	0/3421	0.43	0/4634
All	All	0.30	0/6925	0.43	0/9382

There are no bond length outliers.

There are no bond angle outliers.

There are no chirality outliers.

There are no planarity outliers.

### 5.2 Too-close contacts

In the following table, the Non-H and H(model) columns list the number of non-hydrogen atoms and hydrogen atoms in the chain respectively. The H(added) column lists the number of hydrogen atoms added and optimized by MolProbity. The Clashes column lists the number of clashes within the asymmetric unit, whereas Symm-Clashes lists symmetry related clashes.

Mol	Chain	Non-H	H(model)	H(added)	Clashes	Symm-Clashes
1	A	3427	0	3323	19	0
1	B	3350	0	3267	20	0
2	A	10	0	7	0	0
2	B	10	0	7	0	0
3	A	14	0	13	0	0
3	B	14	0	13	0	0
4	A	5	0	0	0	0
4	B	15	0	0	0	0
5	A	66	0	0	0	0
5	B	55	0	0	0	0
All	All	6966	0	6630	38	0



The all-atom clashscore is defined as the number of clashes found per 1000 atoms (including hydrogen atoms). The all-atom clashscore for this structure is 3.

All (38) close contacts within the same asymmetric unit are listed below, sorted by their clash magnitude.

Atom-1	Atom-2	Interatomic distance (Å)	Clash overlap (Å)
1:B:151:ILE:HD13	1:B:409:VAL:HG22	1.80	0.64
1:B:113:LEU:HD13	1:B:161:MET:HG2	1.86	0.57
1:A:499:VAL:HA	1:A:502[A]:MET:HE2	1.86	0.57
1:B:209:ILE:HD11	1:B:473:ILE:HG12	1.89	0.54
1:B:478:ILE:HG22	1:B:483:THR:HG22	1.88	0.54
1:A:70:GLU:O	1:A:74:HIS:HB2	2.08	0.54
1:A:77:GLU:HG3	1:A:344:TYR:HE2	1.73	0.53
1:B:215:TRP:HZ3	1:B:306:ILE:HD11	1.74	0.53
1:B:70:GLU:O	1:B:74:HIS:HB2	2.09	0.53
1:A:209:ILE:HD11	1:A:473:ILE:HG12	1.93	0.51
1:A:356:ASN:HB3	1:A:359:PHE:HB2	1.93	0.51
1:A:478:ILE:HG12	1:A:483:THR:HG22	1.94	0.50
1:B:356:ASN:HB3	1:B:359:PHE:HB2	1.94	0.49
1:B:103:LEU:HD13	1:B:115:GLN:HB3	1.95	0.49
1:A:470:ARG:HG2	1:A:492:THR:HG22	1.95	0.48
1:A:218:VAL:HG12	1:A:277:ALA:HB3	1.95	0.48
1:B:446:ILE:O	1:B:449:VAL:HG22	2.13	0.47
1:B:242:ILE:HG22	1:B:243:GLY:N	2.30	0.46
1:A:370:LYS:H	1:A:383:LYS:HB2	1.82	0.45
1:A:168:LEU:HD22	1:B:114:GLU:HG2	1.98	0.45
1:A:119:PHE:HD1	1:A:147:ILE:HG13	1.81	0.44
1:B:322:GLU:HG2	1:B:483:THR:HG21	1.99	0.44
1:A:335:ARG:HD3	1:A:400:GLY:O	2.17	0.44
1:A:154:ALA:HA	1:A:177:ALA:HB3	2.00	0.43
1:A:210:VAL:HG13	1:A:215:TRP:O	2.18	0.43
1:B:77:GLU:HG3	1:B:344:TYR:HE2	1.83	0.43
1:A:103:LEU:HD13	1:A:115:GLN:HB3	2.01	0.43
1:B:180:ALA:HA	1:B:181:PRO:HD3	1.94	0.43
1:A:83:ILE:HD13	1:A:100:VAL:HG23	2.02	0.42
1:A:77:GLU:HG3	1:A:344:TYR:CE2	2.52	0.42
1:B:218:VAL:HG12	1:B:277:ALA:HB3	2.00	0.42
1:B:154:ALA:HA	1:B:177:ALA:HB3	2.01	0.41
1:B:334:LYS:HG3	1:B:470:ARG:HB3	2.02	0.41
1:B:83:ILE:HD13	1:B:100:VAL:CG2	2.50	0.41
1:B:181:PRO:HD3	1:B:199:ASP:HB2	2.02	0.41
1:A:181:PRO:HD3	1:A:199:ASP:HB2	2.03	0.41
1:B:242:ILE:HG22	1:B:243:GLY:H	1.86	0.41

*Continued on next page...*

*Continued from previous page...*

Atom-1	Atom-2	Interatomic distance (Å)	Clash overlap (Å)
1:A:334:LYS:HG3	1:A:470:ARG:HB3	2.03	0.41

There are no symmetry-related clashes.

## 5.3 Torsion angles [i](#)

### 5.3.1 Protein backbone [i](#)

In the following table, the Percentiles column shows the percent Ramachandran outliers of the chain as a percentile score with respect to all X-ray entries followed by that with respect to entries of similar resolution.

The Analysed column shows the number of residues for which the backbone conformation was analysed, and the total number of residues.

Mol	Chain	Analysed	Favoured	Allowed	Outliers	Percentiles	
1	A	440/479 (92%)	420 (96%)	20 (4%)	0	100	100
1	B	427/479 (89%)	405 (95%)	20 (5%)	2 (0%)	29	43
All	All	867/958 (90%)	825 (95%)	40 (5%)	2 (0%)	47	64

All (2) Ramachandran outliers are listed below:

Mol	Chain	Res	Type
1	B	60	ARG
1	B	63	PRO

### 5.3.2 Protein sidechains [i](#)

In the following table, the Percentiles column shows the percent sidechain outliers of the chain as a percentile score with respect to all X-ray entries followed by that with respect to entries of similar resolution.

The Analysed column shows the number of residues for which the sidechain conformation was analysed, and the total number of residues.

Mol	Chain	Analysed	Rotameric	Outliers	Percentiles	
1	A	348/402 (87%)	348 (100%)	0	100	100
1	B	347/402 (86%)	347 (100%)	0	100	100
All	All	695/804 (86%)	695 (100%)	0	100	100

There are no protein residues with a non-rotameric sidechain to report.

Some sidechains can be flipped to improve hydrogen bonding and reduce clashes. There are no such sidechains identified.

### 5.3.3 RNA ⓘ

There are no RNA molecules in this entry.

## 5.4 Non-standard residues in protein, DNA, RNA chains ⓘ

There are no non-standard protein/DNA/RNA residues in this entry.

## 5.5 Carbohydrates ⓘ

There are no monosaccharides in this entry.

## 5.6 Ligand geometry ⓘ

8 ligands are modelled in this entry.

In the following table, the Counts columns list the number of bonds (or angles) for which Mogul statistics could be retrieved, the number of bonds (or angles) that are observed in the model and the number of bonds (or angles) that are defined in the Chemical Component Dictionary. The Link column lists molecule types, if any, to which the group is linked. The Z score for a bond length (or angle) is the number of standard deviations the observed value is removed from the expected value. A bond length (or angle) with  $|Z| > 2$  is considered an outlier worth inspection. RMSZ is the root-mean-square of all Z scores of the bond lengths (or angles).

Mol	Type	Chain	Res	Link	Bond lengths			Bond angles		
					Counts	RMSZ	$\# Z  > 2$	Counts	RMSZ	$\# Z  > 2$
4	SO4	B	605	-	4,4,4	0.14	0	6,6,6	0.05	0
3	NAG	A	602	1	14,14,15	0.46	0	17,19,21	0.84	1 (5%)
2	GGL	A	601	-	2,9,9	0.21	0	2,11,11	1.08	0
4	SO4	A	603	-	4,4,4	0.14	0	6,6,6	0.06	0
3	NAG	B	602	1	14,14,15	0.49	0	17,19,21	0.88	1 (5%)
4	SO4	B	604	-	4,4,4	0.14	0	6,6,6	0.05	0
4	SO4	B	603	-	4,4,4	0.15	0	6,6,6	0.10	0
2	GGL	B	601	-	2,9,9	0.24	0	2,11,11	0.96	0

In the following table, the Chirals column lists the number of chiral outliers, the number of chiral centers analysed, the number of these observed in the model and the number defined in the Chemical Component Dictionary. Similar counts are reported in the Torsion and Rings columns.

'-' means no outliers of that kind were identified.

Mol	Type	Chain	Res	Link	Chirals	Torsions	Rings
3	NAG	B	602	1	-	1/6/23/26	0/1/1/1
3	NAG	A	602	1	-	0/6/23/26	0/1/1/1
2	GGL	A	601	-	-	1/3/9/9	-
2	GGL	B	601	-	-	1/3/9/9	-

There are no bond length outliers.

All (2) bond angle outliers are listed below:

Mol	Chain	Res	Type	Atoms	Z	Observed(°)	Ideal(°)
3	B	602	NAG	C1-O5-C5	2.31	115.32	112.19
3	A	602	NAG	C1-O5-C5	2.20	115.18	112.19

There are no chirality outliers.

All (3) torsion outliers are listed below:

Mol	Chain	Res	Type	Atoms
2	B	601	GGL	C-CA-CB-CG
2	A	601	GGL	C-CA-CB-CG
3	B	602	NAG	C4-C5-C6-O6

There are no ring outliers.

No monomer is involved in short contacts.

## 5.7 Other polymers [i](#)

There are no such residues in this entry.

## 5.8 Polymer linkage issues [i](#)

There are no chain breaks in this entry.

## 6 Fit of model and data

### 6.1 Protein, DNA and RNA chains

In the following table, the column labelled ‘#RSRZ> 2’ contains the number (and percentage) of RSRZ outliers, followed by percent RSRZ outliers for the chain as percentile scores relative to all X-ray entries and entries of similar resolution. The OWAB column contains the minimum, median, 95<sup>th</sup> percentile and maximum values of the occupancy-weighted average B-factor per residue. The column labelled ‘Q< 0.9’ lists the number of (and percentage) of residues with an average occupancy less than 0.9.

Mol	Chain	Analysed	<RSRZ>	#RSRZ>2	OWAB(Å <sup>2</sup> )	Q<0.9
1	A	445/479 (92%)	0.08	22 (4%) 29 26	28, 37, 52, 56	0
1	B	433/479 (90%)	0.18	25 (5%) 23 19	27, 38, 52, 55	0
All	All	878/958 (91%)	0.13	47 (5%) 25 23	27, 38, 52, 56	0

All (47) RSRZ outliers are listed below:

Mol	Chain	Res	Type	RSRZ
1	B	481	LYS	5.6
1	B	479	THR	4.0
1	A	506	HIS	3.8
1	A	479	THR	3.6
1	A	481	LYS	3.6
1	A	480	ASN	3.5
1	A	122	ALA	3.4
1	A	482	SER	3.3
1	B	480	ASN	3.2
1	B	122	ALA	3.2
1	B	243	GLY	3.2
1	A	259	PRO	3.1
1	A	384	CYS	3.1
1	A	371	LEU	3.1
1	A	432	PRO	3.1
1	B	38	HIS	3.0
1	B	60	ARG	2.9
1	A	509	HIS	2.9
1	B	433	ARG	2.8
1	B	259	PRO	2.8
1	A	385	THR	2.8
1	A	370	LYS	2.8
1	B	61	GLY	2.7
1	A	510	THR	2.6

*Continued on next page...*

*Continued from previous page...*

Mol	Chain	Res	Type	RSRZ
1	A	38	HIS	2.6
1	A	508	GLU	2.6
1	B	244	GLY	2.5
1	B	432	PRO	2.5
1	B	339	ASP	2.5
1	B	274	ASN	2.4
1	A	121	GLN	2.4
1	A	426	GLY	2.4
1	B	387	LEU	2.4
1	A	387	LEU	2.4
1	A	507	ARG	2.4
1	B	493	ASN	2.4
1	B	241	GLU	2.4
1	A	368	GLY	2.3
1	B	482	SER	2.2
1	A	343	ARG	2.2
1	B	428	ILE	2.2
1	B	393	ASP	2.2
1	B	392	ARG	2.2
1	B	384	CYS	2.2
1	B	369	CYS	2.1
1	B	368	GLY	2.1
1	B	64	CYS	2.0

## 6.2 Non-standard residues in protein, DNA, RNA chains [i](#)

There are no non-standard protein/DNA/RNA residues in this entry.

## 6.3 Carbohydrates [i](#)

There are no monosaccharides in this entry.

## 6.4 Ligands [i](#)

In the following table, the Atoms column lists the number of modelled atoms in the group and the number defined in the chemical component dictionary. The B-factors column lists the minimum, median, 95<sup>th</sup> percentile and maximum values of B factors of atoms in the group. The column labelled 'Q< 0.9' lists the number of atoms with occupancy less than 0.9.

*Continued on next page...*

*Continued from previous page...*

Mol	Type	Chain	Res	Atoms	RSCC	RSR	B-factors( $\text{\AA}^2$ )	Q<0.9
-----	------	-------	-----	-------	------	-----	-----------------------------	-------

Mol	Type	Chain	Res	Atoms	RSCC	RSR	B-factors( $\text{\AA}^2$ )	Q<0.9
3	NAG	A	602	14/15	0.86	0.14	33,33,34,34	0
3	NAG	B	602	14/15	0.89	0.15	34,34,34,34	0
2	GGL	A	601	10/10	0.96	0.12	25,25,26,27	0
2	GGL	B	601	10/10	0.96	0.12	27,28,29,30	0
4	SO4	B	604	5/5	0.97	0.19	62,62,62,62	0
4	SO4	B	605	5/5	0.97	0.19	60,60,60,61	0
4	SO4	B	603	5/5	0.98	0.27	46,46,46,47	0
4	SO4	A	603	5/5	0.98	0.17	53,53,53,53	0

## 6.5 Other polymers [i](#)

There are no such residues in this entry.