



Full wwPDB X-ray Structure Validation Report ⓘ

Jun 14, 2020 – 11:25 am BST

PDB ID : 2BT6
Title : Ru(bpy)₂(mbpy)-Modified Bovine Adrenodoxin
Authors : Halavaty, A.; Mueller, J.J.; Contzen, J.; Jung, C.; Hannemann, F.; Bernhardt, R.; Galander, M.; Lenzian, F.; Heinemann, U.
Deposited on : 2005-05-26
Resolution : 1.50 Å(reported)

This is a Full wwPDB X-ray Structure Validation Report for a publicly released PDB entry.

We welcome your comments at validation@mail.wwpdb.org

A user guide is available at

<https://www.wwpdb.org/validation/2017/XrayValidationReportHelp>

with specific help available everywhere you see the ⓘ symbol.

The following versions of software and data (see [references ⓘ](#)) were used in the production of this report:

MolProbity : 4.02b-467
Mogul : 1.8.5 (274361), CSD as541be (2020)
Xtriage (Phenix) : 1.13
EDS : 2.11
buster-report : 1.1.7 (2018)
Percentile statistics : 20191225.v01 (using entries in the PDB archive December 25th 2019)
Refmac : 5.8.0158
CCP4 : 7.0.044 (Gargrove)
Ideal geometry (proteins) : Engh & Huber (2001)
Ideal geometry (DNA, RNA) : Parkinson et al. (1996)
Validation Pipeline (wwPDB-VP) : 2.11

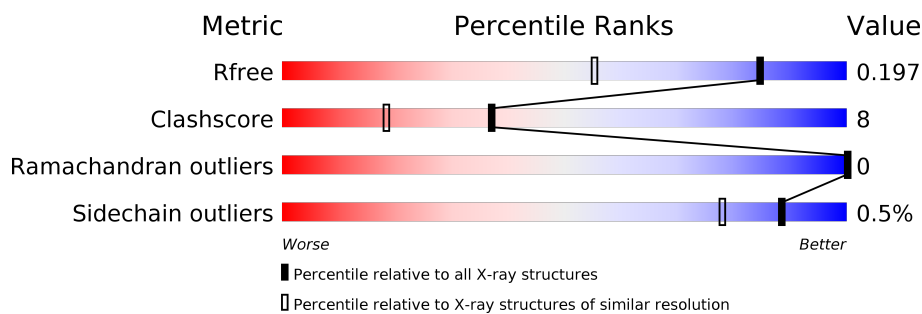
1 Overall quality at a glance

The following experimental techniques were used to determine the structure:

X-RAY DIFFRACTION

The reported resolution of this entry is 1.50 Å.

Percentile scores (ranging between 0-100) for global validation metrics of the entry are shown in the following graphic. The table shows the number of entries on which the scores are based.



Metric	Whole archive (#Entries)	Similar resolution (#Entries, resolution range(Å))
R_{free}	130704	2936 (1.50-1.50)
Clashscore	141614	3144 (1.50-1.50)
Ramachandran outliers	138981	3066 (1.50-1.50)
Sidechain outliers	138945	3064 (1.50-1.50)

The table below summarises the geometric issues observed across the polymeric chains and their fit to the electron density. The red, orange, yellow and green segments on the lower bar indicate the fraction of residues that contain outliers for ≥ 3 , 2, 1 and 0 types of geometric quality criteria respectively. A grey segment represents the fraction of residues that are not modelled. The numeric value for each fraction is indicated below the corresponding segment, with a dot representing fractions $\leq 5\%$.

Mol	Chain	Length	Quality of chain
1	A	108	
1	B	108	

The following table lists non-polymeric compounds, carbohydrate monomers and non-standard residues in protein, DNA, RNA chains that are outliers for geometric or electron-density-fit criteria:

Mol	Type	Chain	Res	Chirality	Geometry	Clashes	Electron density
3	RUA	A	1110[A]	X	-	-	-
3	RUA	A	1110[B]	X	-	-	-
3	RUA	B	1110[A]	X	-	-	-

Continued on next page...

Continued from previous page...

Mol	Type	Chain	Res	Chirality	Geometry	Clashes	Electron density
3	RUA	B	1110[B]	X	-	-	-

2 Entry composition

There are 5 unique types of molecules in this entry. The entry contains 2021 atoms, of which 0 are hydrogens and 0 are deuteriums.

In the tables below, the ZeroOcc column contains the number of atoms modelled with zero occupancy, the AltConf column contains the number of residues with at least one atom in alternate conformation and the Trace column contains the number of residues modelled with at most 2 atoms.

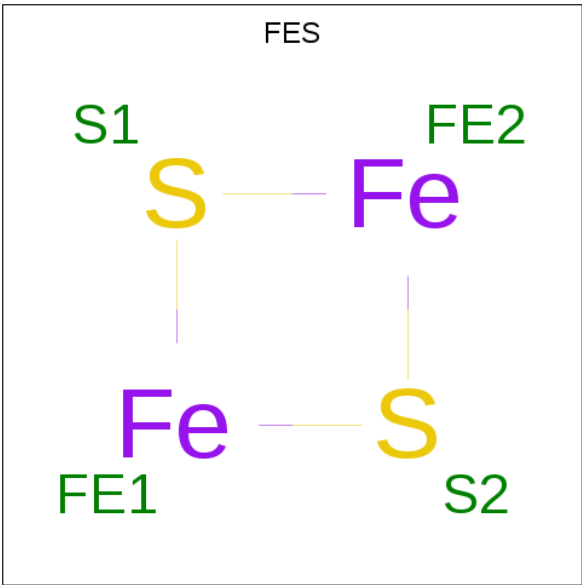
- Molecule 1 is a protein called ADRENODOXIN 1.

Mol	Chain	Residues	Atoms					ZeroOcc	AltConf	Trace
1	A	105	Total	C	N	O	S	0	6	1
			831	513	143	166	9			
1	B	104	Total	C	N	O	S	0	3	0
			814	503	137	165	9			

There are 8 discrepancies between the modelled and reference sequences:

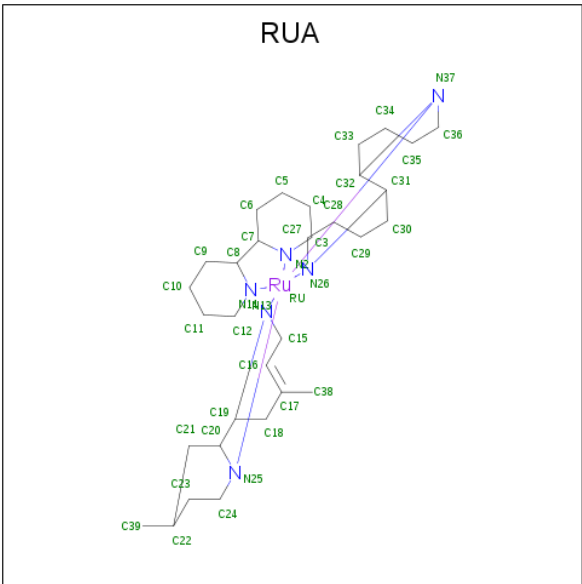
Chain	Residue	Modelled	Actual	Comment	Reference
A	1	GLY	-	expression tag	UNP P00257
A	2	SER	-	expression tag	UNP P00257
A	3	SER	-	expression tag	UNP P00257
A	4	GLY	-	expression tag	UNP P00257
B	1	GLY	-	expression tag	UNP P00257
B	2	SER	-	expression tag	UNP P00257
B	3	SER	-	expression tag	UNP P00257
B	4	GLY	-	expression tag	UNP P00257

- Molecule 2 is FE2/S2 (INORGANIC) CLUSTER (three-letter code: FES) (formula: Fe₂S₂).



Mol	Chain	Residues	Atoms			ZeroOcc	AltConf
2	A	1	Total	Fe	S	0	0
			4	2	2		
2	B	1	Total	Fe	S	0	0
			4	2	2		

- Molecule 3 is (4'-METHYL-2,2'-BIPYRIDINE)BIS(2,2'-BIPYRIDINE) (three-letter code: RUA) (formula: C₃₂H₅₆N₆Ru).



Mol	Chain	Residues	Atoms			ZeroOcc	AltConf
3	A	1	Total	C	N	0	1
			78	64	12		

Continued on next page...

Continued from previous page...

Mol	Chain	Residues	Atoms				ZeroOcc	AltConf
3	B	1	Total	C	N	Ru	0	1
			78	64	12	2		

- Molecule 4 is MAGNESIUM ION (three-letter code: MG) (formula: Mg).

Mol	Chain	Residues	Atoms		ZeroOcc	AltConf
4	B	1	Total	Mg	0	0
			1	1		

- Molecule 5 is water.

Mol	Chain	Residues	Atoms		ZeroOcc	AltConf
5	A	130	Total	O	0	0
			130	130		
5	B	81	Total	O	0	0
			81	81		

3 Residue-property plots [i](#)

These plots are drawn for all protein, RNA and DNA chains in the entry. The first graphic for a chain summarises the proportions of the various outlier classes displayed in the second graphic. The second graphic shows the sequence view annotated by issues in geometry. Residues are color-coded according to the number of geometric quality criteria for which they contain at least one outlier: green = 0, yellow = 1, orange = 2 and red = 3 or more. Stretches of 2 or more consecutive residues without any outlier are shown as a green connector. Residues present in the sample, but not in the model, are shown in grey.

- Molecule 1: ADRENODOXIN 1

Chain A:  93% 5% •



- Molecule 1: ADRENODOXIN 1

Chain B:  93% • •



4 Data and refinement statistics

Property	Value	Source
Space group	P 21 21 21	Depositor
Cell constants a, b, c, α , β , γ	50.51Å 56.97Å 79.08Å 90.00° 90.00° 90.00°	Depositor
Resolution (Å)	20.00 – 1.50 37.79 – 1.50	Depositor EDS
% Data completeness (in resolution range)	97.3 (20.00-1.50) 97.3 (37.79-1.50)	Depositor EDS
R_{merge}	0.05	Depositor
R_{sym}	(Not available)	Depositor
$\langle I/\sigma(I) \rangle$ ¹	2.10 (at 1.50Å)	Xtriage
Refinement program	REFMAC 5.2.0005	Depositor
R, R_{free}	0.161 , 0.186 0.180 , 0.197	Depositor DCC
R_{free} test set	1822 reflections (5.03%)	wwPDB-VP
Wilson B-factor (Å ²)	18.8	Xtriage
Anisotropy	0.241	Xtriage
Bulk solvent k_{sol} (e/Å ³), B_{sol} (Å ²)	0.36 , 38.1	EDS
L-test for twinning ²	$\langle L \rangle = 0.49$, $\langle L^2 \rangle = 0.32$	Xtriage
Estimated twinning fraction	No twinning to report.	Xtriage
F_o, F_c correlation	0.95	EDS
Total number of atoms	2021	wwPDB-VP
Average B, all atoms (Å ²)	21.0	wwPDB-VP

Xtriage's analysis on translational NCS is as follows: *The largest off-origin peak in the Patterson function is 7.21% of the height of the origin peak. No significant pseudotranslation is detected.*

¹Intensities estimated from amplitudes.

²Theoretical values of $\langle |L| \rangle$, $\langle L^2 \rangle$ for acentric reflections are 0.5, 0.333 respectively for untwinned datasets, and 0.375, 0.2 for perfectly twinned datasets.

5 Model quality

5.1 Standard geometry

Bond lengths and bond angles in the following residue types are not validated in this section: MG, RUA, FES

The Z score for a bond length (or angle) is the number of standard deviations the observed value is removed from the expected value. A bond length (or angle) with $|Z| > 5$ is considered an outlier worth inspection. RMSZ is the root-mean-square of all Z scores of the bond lengths (or angles).

Mol	Chain	Bond lengths		Bond angles	
		RMSZ	$\# Z > 5$	RMSZ	$\# Z > 5$
1	A	0.49	0/866	0.71	0/1166
1	B	0.40	0/835	0.64	0/1126
All	All	0.45	0/1701	0.68	0/2292

There are no bond length outliers.

There are no bond angle outliers.

There are no chirality outliers.

There are no planarity outliers.

5.2 Too-close contacts

In the following table, the Non-H and H(model) columns list the number of non-hydrogen atoms and hydrogen atoms in the chain respectively. The H(added) column lists the number of hydrogen atoms added and optimized by MolProbity. The Clashes column lists the number of clashes within the asymmetric unit, whereas Symm-Clashes lists symmetry related clashes.

Mol	Chain	Non-H	H(model)	H(added)	Clashes	Symm-Clashes
1	A	831	0	809	6	0
1	B	814	0	793	11	0
2	A	4	0	0	0	0
2	B	4	0	0	0	0
3	A	78	0	97	12	0
3	B	78	0	98	14	0
4	B	1	0	0	0	0
5	A	130	0	0	2	0
5	B	81	0	0	0	0
All	All	2021	0	1797	28	0

The all-atom clashscore is defined as the number of clashes found per 1000 atoms (including

hydrogen atoms). The all-atom clashscore for this structure is 8.

All (28) close contacts within the same asymmetric unit are listed below, sorted by their clash magnitude.

Atom-1	Atom-2	Interatomic distance (Å)	Clash overlap (Å)
1:A:95[B]:CYS:SG	3:A:1110[B]:RUA:H392	1.26	1.71
1:B:95[A]:CYS:SG	3:B:1110[A]:RUA:H392	1.52	1.47
1:A:95[B]:CYS:SG	3:A:1110[B]:RUA:C39	2.22	1.25
1:B:95[B]:CYS:SG	3:B:1110[B]:RUA:C22	2.30	1.18
1:B:95[B]:CYS:SG	3:B:1110[B]:RUA:H391	1.77	1.15
1:B:95[B]:CYS:SG	3:B:1110[B]:RUA:C39	1.06	1.12
1:B:95[B]:CYS:SG	3:B:1110[B]:RUA:H392	0.69	1.09
1:B:95[A]:CYS:SG	3:B:1110[A]:RUA:C39	2.47	1.02
1:B:95[B]:CYS:SG	3:B:1110[B]:RUA:H393	1.17	0.90
1:A:4:GLY:O	1:A:5:ASP:N	2.25	0.69
1:B:48:GLY:O	3:B:1110[A]:RUA:H11	1.99	0.61
3:A:1110[B]:RUA:H231	5:A:2024:HOH:O	2.01	0.60
1:B:95[B]:CYS:SG	3:B:1110[B]:RUA:C23	2.90	0.57
3:A:1110[B]:RUA:H361	3:A:1110[B]:RUA:H121	1.88	0.56
1:A:95[B]:CYS:SG	3:A:1110[B]:RUA:C22	2.92	0.55
3:A:1110[B]:RUA:H241	3:A:1110[B]:RUA:C31	2.36	0.55
3:A:1110[B]:RUA:H12	3:A:1110[B]:RUA:C32	2.37	0.54
3:A:1110[B]:RUA:C19	3:A:1110[B]:RUA:H36	2.38	0.53
3:B:1110[B]:RUA:H27	3:B:1110[B]:RUA:H151	1.91	0.51
1:A:48:GLY:O	3:A:1110[A]:RUA:H11	2.12	0.50
1:B:95[B]:CYS:HG	3:B:1110[B]:RUA:C39	1.27	0.48
3:A:1110[A]:RUA:H121	3:A:1110[A]:RUA:C32	2.45	0.46
3:B:1110[A]:RUA:H27	3:B:1110[A]:RUA:C7	2.47	0.45
1:A:45:ALA:HB1	1:B:45:ALA:HB1	1.99	0.45
3:B:1110[B]:RUA:C19	3:B:1110[B]:RUA:H31	2.47	0.43
3:A:1110[B]:RUA:C36	3:A:1110[B]:RUA:H121	2.48	0.43
3:B:1110[A]:RUA:H121	3:B:1110[A]:RUA:C32	2.49	0.42
3:A:1110[B]:RUA:H383	5:A:2059:HOH:O	2.21	0.40

There are no symmetry-related clashes.

5.3 Torsion angles

5.3.1 Protein backbone

In the following table, the Percentiles column shows the percent Ramachandran outliers of the chain as a percentile score with respect to all X-ray entries followed by that with respect to entries of similar resolution.

The Analysed column shows the number of residues for which the backbone conformation was analysed, and the total number of residues.

Mol	Chain	Analysed	Favoured	Allowed	Outliers	Percentiles	
1	A	108/108 (100%)	108 (100%)	0	0	100	100
1	B	105/108 (97%)	105 (100%)	0	0	100	100
All	All	213/216 (99%)	213 (100%)	0	0	100	100

There are no Ramachandran outliers to report.

5.3.2 Protein sidechains ⓘ

In the following table, the Percentiles column shows the percent sidechain outliers of the chain as a percentile score with respect to all X-ray entries followed by that with respect to entries of similar resolution.

The Analysed column shows the number of residues for which the sidechain conformation was analysed, and the total number of residues.

Mol	Chain	Analysed	Rotameric	Outliers	Percentiles	
1	A	97/93 (104%)	97 (100%)	0	100	100
1	B	94/93 (101%)	93 (99%)	1 (1%)	73	53
All	All	191/186 (103%)	190 (100%)	1 (0%)	88	78

All (1) residues with a non-rotameric sidechain are listed below:

Mol	Chain	Res	Type
1	B	5	ASP

Some sidechains can be flipped to improve hydrogen bonding and reduce clashes. There are no such sidechains identified.

5.3.3 RNA ⓘ

There are no RNA molecules in this entry.

5.4 Non-standard residues in protein, DNA, RNA chains ⓘ

There are no non-standard protein/DNA/RNA residues in this entry.

5.5 Carbohydrates

There are no carbohydrates in this entry.

5.6 Ligand geometry

Of 7 ligands modelled in this entry, 1 is monoatomic - leaving 6 for Mogul analysis.

In the following table, the Counts columns list the number of bonds (or angles) for which Mogul statistics could be retrieved, the number of bonds (or angles) that are observed in the model and the number of bonds (or angles) that are defined in the Chemical Component Dictionary. The Link column lists molecule types, if any, to which the group is linked. The Z score for a bond length (or angle) is the number of standard deviations the observed value is removed from the expected value. A bond length (or angle) with $|Z| > 2$ is considered an outlier worth inspection. RMSZ is the root-mean-square of all Z scores of the bond lengths (or angles).

Mol	Type	Chain	Res	Link	Bond lengths			Bond angles		
					Counts	RMSZ	# Z > 2	Counts	RMSZ	# Z > 2
3	RUA	B	1110[B]	-	41,47,47	5.54	35 (85%)	25,79,79	4.63	23 (92%)
2	FES	B	1109	1	0,4,4	0.00	-	-		
3	RUA	A	1110[B]	-	41,47,47	5.58	35 (85%)	25,79,79	4.66	23 (92%)
3	RUA	B	1110[A]	3	41,47,47	5.44	35 (85%)	25,79,79	4.65	23 (92%)
3	RUA	A	1110[A]	1,3	41,47,47	5.47	35 (85%)	25,79,79	4.63	23 (92%)
2	FES	A	1109	1	0,4,4	0.00	-	-		

In the following table, the Chirals column lists the number of chiral outliers, the number of chiral centers analysed, the number of these observed in the model and the number defined in the Chemical Component Dictionary. Similar counts are reported in the Torsion and Rings columns. '-' means no outliers of that kind were identified.

Mol	Type	Chain	Res	Link	Chirals	Torsions	Rings
3	RUA	B	1110[B]	-	7/7/15/16	-	0/9/9/9
2	FES	B	1109	1	-	-	0/1/1/1
3	RUA	A	1110[B]	-	7/7/15/16	-	0/9/9/9
3	RUA	B	1110[A]	3	7/7/15/16	-	0/9/9/9
3	RUA	A	1110[A]	1,3	7/7/15/16	-	0/9/9/9
2	FES	A	1109	1	-	-	0/1/1/1

All (140) bond length outliers are listed below:

Mol	Chain	Res	Type	Atoms	Z	Observed(Å)	Ideal(Å)
3	B	1110[B]	RUA	C21-C20	-12.46	1.33	1.53
3	A	1110[B]	RUA	C21-C20	-12.21	1.34	1.53

Continued on next page...

Continued from previous page...

Mol	Chain	Res	Type	Atoms	Z	Observed(Å)	Ideal(Å)
3	B	1110[A]	RUA	C21-C20	-11.61	1.35	1.53
3	A	1110[A]	RUA	C21-C20	-11.53	1.35	1.53
3	A	1110[A]	RUA	C18-C19	-8.65	1.39	1.53
3	B	1110[A]	RUA	C18-C19	-8.40	1.39	1.53
3	B	1110[B]	RUA	C18-C19	-8.38	1.39	1.53
3	A	1110[B]	RUA	RU-N37	-8.34	1.81	2.12
3	A	1110[B]	RUA	C15-N14	-8.08	1.35	1.49
3	A	1110[B]	RUA	C18-C19	-8.02	1.40	1.53
3	A	1110[A]	RUA	C15-N14	-7.67	1.35	1.49
3	B	1110[B]	RUA	C15-N14	-7.61	1.35	1.49
3	B	1110[A]	RUA	C15-N14	-7.43	1.36	1.49
3	A	1110[B]	RUA	C3-N2	-7.40	1.34	1.49
3	B	1110[B]	RUA	RU-N13	-7.35	1.85	2.12
3	A	1110[B]	RUA	C24-N25	-7.35	1.34	1.49
3	B	1110[A]	RUA	C12-N13	-7.17	1.35	1.49
3	B	1110[A]	RUA	C27-N26	-7.13	1.35	1.49
3	A	1110[A]	RUA	C27-N26	-7.12	1.35	1.49
3	B	1110[B]	RUA	C24-N25	-7.11	1.35	1.49
3	B	1110[B]	RUA	C27-N26	-7.06	1.35	1.49
3	A	1110[A]	RUA	C24-N25	-7.02	1.35	1.49
3	B	1110[B]	RUA	RU-N14	-6.97	1.86	2.12
3	B	1110[B]	RUA	RU-N37	-6.95	1.86	2.12
3	B	1110[B]	RUA	RU-N25	-6.95	1.86	2.12
3	A	1110[A]	RUA	C12-N13	-6.92	1.35	1.49
3	A	1110[B]	RUA	C27-N26	-6.91	1.35	1.49
3	A	1110[A]	RUA	C36-N37	-6.90	1.35	1.49
3	A	1110[A]	RUA	C3-N2	-6.86	1.35	1.49
3	A	1110[A]	RUA	RU-N14	-6.86	1.87	2.12
3	B	1110[B]	RUA	C3-N2	-6.83	1.35	1.49
3	A	1110[A]	RUA	RU-N2	-6.82	1.87	2.12
3	B	1110[A]	RUA	RU-N14	-6.80	1.87	2.12
3	A	1110[A]	RUA	RU-N37	-6.74	1.87	2.12
3	B	1110[A]	RUA	RU-N37	-6.70	1.87	2.12
3	B	1110[A]	RUA	C3-N2	-6.68	1.36	1.49
3	B	1110[B]	RUA	RU-N26	-6.68	1.87	2.12
3	B	1110[A]	RUA	C24-N25	-6.68	1.36	1.49
3	A	1110[B]	RUA	RU-N26	-6.67	1.87	2.12
3	A	1110[B]	RUA	RU-N2	-6.66	1.87	2.12
3	B	1110[A]	RUA	C36-N37	-6.63	1.36	1.49
3	A	1110[B]	RUA	C12-N13	-6.57	1.36	1.49
3	B	1110[A]	RUA	RU-N26	-6.57	1.88	2.12
3	B	1110[B]	RUA	C36-N37	-6.48	1.36	1.49

Continued on next page...

Continued from previous page...

Mol	Chain	Res	Type	Atoms	Z	Observed(Å)	Ideal(Å)
3	B	1110[B]	RUA	C30-C31	-6.47	1.39	1.53
3	A	1110[B]	RUA	RU-N14	-6.45	1.88	2.12
3	B	1110[A]	RUA	RU-N2	-6.44	1.88	2.12
3	A	1110[B]	RUA	C6-C7	-6.44	1.39	1.53
3	A	1110[A]	RUA	RU-N26	-6.41	1.88	2.12
3	B	1110[A]	RUA	C30-C31	-6.41	1.39	1.53
3	B	1110[A]	RUA	RU-N25	-6.40	1.88	2.12
3	B	1110[B]	RUA	C33-C32	-6.38	1.39	1.53
3	A	1110[B]	RUA	C30-C31	-6.38	1.39	1.53
3	A	1110[A]	RUA	C6-C7	-6.37	1.39	1.53
3	A	1110[B]	RUA	C9-C8	-6.36	1.39	1.53
3	B	1110[A]	RUA	C33-C32	-6.28	1.39	1.53
3	B	1110[A]	RUA	C9-C8	-6.28	1.39	1.53
3	A	1110[B]	RUA	C33-C32	-6.27	1.39	1.53
3	A	1110[A]	RUA	C30-C31	-6.26	1.39	1.53
3	A	1110[A]	RUA	RU-N13	-6.21	1.89	2.12
3	B	1110[A]	RUA	RU-N13	-6.21	1.89	2.12
3	A	1110[A]	RUA	C33-C32	-6.19	1.39	1.53
3	A	1110[B]	RUA	RU-N13	-6.17	1.89	2.12
3	B	1110[A]	RUA	C6-C7	-6.16	1.40	1.53
3	B	1110[B]	RUA	C9-C8	-6.15	1.40	1.53
3	B	1110[B]	RUA	C6-C7	-6.14	1.40	1.53
3	A	1110[B]	RUA	RU-N25	-6.14	1.89	2.12
3	A	1110[A]	RUA	C9-C8	-6.12	1.40	1.53
3	A	1110[B]	RUA	C36-N37	-6.11	1.37	1.49
3	B	1110[B]	RUA	C21-C22	-6.11	1.39	1.53
3	A	1110[A]	RUA	RU-N25	-6.09	1.90	2.12
3	A	1110[B]	RUA	C24-C23	-5.96	1.39	1.52
3	A	1110[B]	RUA	C21-C22	-5.93	1.39	1.53
3	B	1110[B]	RUA	C12-N13	-5.92	1.37	1.49
3	B	1110[B]	RUA	RU-N2	-5.90	1.90	2.12
3	B	1110[A]	RUA	C21-C22	-5.82	1.39	1.53
3	A	1110[A]	RUA	C21-C22	-5.78	1.39	1.53
3	B	1110[B]	RUA	C24-C23	-5.63	1.40	1.52
3	A	1110[A]	RUA	C10-C9	-5.57	1.38	1.53
3	B	1110[A]	RUA	C10-C9	-5.39	1.39	1.53
3	A	1110[A]	RUA	C34-C33	-5.36	1.39	1.53
3	A	1110[B]	RUA	C10-C9	-5.35	1.39	1.53
3	A	1110[A]	RUA	C5-C6	-5.32	1.39	1.53
3	A	1110[B]	RUA	C34-C33	-5.30	1.39	1.53
3	A	1110[B]	RUA	C5-C6	-5.30	1.39	1.53
3	B	1110[B]	RUA	C5-C6	-5.30	1.39	1.53

Continued on next page...

Continued from previous page...

Mol	Chain	Res	Type	Atoms	Z	Observed(Å)	Ideal(Å)
3	B	1110[B]	RUA	C10-C9	-5.21	1.39	1.53
3	B	1110[A]	RUA	C34-C33	-5.21	1.39	1.53
3	A	1110[B]	RUA	C29-C30	-5.20	1.39	1.53
3	B	1110[B]	RUA	C34-C33	-5.17	1.39	1.53
3	B	1110[A]	RUA	C29-C30	-5.16	1.39	1.53
3	B	1110[B]	RUA	C29-C30	-5.15	1.39	1.53
3	A	1110[A]	RUA	C29-C30	-5.14	1.39	1.53
3	B	1110[A]	RUA	C24-C23	-5.09	1.41	1.52
3	A	1110[A]	RUA	C24-C23	-5.07	1.41	1.52
3	B	1110[A]	RUA	C5-C6	-5.01	1.40	1.53
3	A	1110[B]	RUA	C23-C22	-4.68	1.39	1.52
3	A	1110[A]	RUA	C23-C22	-4.49	1.40	1.52
3	B	1110[B]	RUA	C23-C22	-4.39	1.40	1.52
3	A	1110[B]	RUA	C15-C16	-4.36	1.39	1.49
3	B	1110[A]	RUA	C23-C22	-4.25	1.40	1.52
3	B	1110[A]	RUA	C18-C17	-4.25	1.39	1.50
3	B	1110[B]	RUA	C18-C17	-4.22	1.39	1.50
3	A	1110[A]	RUA	C18-C17	-4.13	1.39	1.50
3	A	1110[B]	RUA	C18-C17	-3.84	1.40	1.50
3	B	1110[B]	RUA	C15-C16	-3.69	1.40	1.49
3	A	1110[A]	RUA	C15-C16	-3.69	1.40	1.49
3	B	1110[A]	RUA	C15-C16	-3.69	1.40	1.49
3	A	1110[B]	RUA	C36-C35	-3.23	1.39	1.51
3	A	1110[B]	RUA	C11-C10	-3.22	1.38	1.51
3	A	1110[B]	RUA	C12-C11	-3.19	1.39	1.51
3	B	1110[B]	RUA	C36-C35	-3.16	1.40	1.51
3	B	1110[A]	RUA	C12-C11	-3.14	1.40	1.51
3	B	1110[A]	RUA	C11-C10	-3.13	1.39	1.51
3	B	1110[A]	RUA	C3-C4	-3.11	1.40	1.51
3	A	1110[A]	RUA	C36-C35	-3.10	1.40	1.51
3	B	1110[B]	RUA	C12-C11	-3.10	1.40	1.51
3	A	1110[A]	RUA	C12-C11	-3.10	1.40	1.51
3	A	1110[A]	RUA	C11-C10	-3.09	1.39	1.51
3	A	1110[A]	RUA	C3-C4	-3.09	1.40	1.51
3	B	1110[B]	RUA	C27-C28	-3.09	1.40	1.51
3	A	1110[B]	RUA	C27-C28	-3.07	1.40	1.51
3	B	1110[A]	RUA	C36-C35	-3.06	1.40	1.51
3	B	1110[A]	RUA	C27-C28	-3.05	1.40	1.51
3	B	1110[B]	RUA	C5-C4	-3.04	1.39	1.51
3	B	1110[B]	RUA	C11-C10	-3.03	1.39	1.51
3	B	1110[B]	RUA	C3-C4	-3.01	1.40	1.51
3	A	1110[B]	RUA	C3-C4	-3.01	1.40	1.51

Continued on next page...

Continued from previous page...

Mol	Chain	Res	Type	Atoms	Z	Observed(Å)	Ideal(Å)
3	A	1110[A]	RUA	C35-C34	-3.00	1.39	1.51
3	A	1110[A]	RUA	C5-C4	-2.98	1.39	1.51
3	A	1110[B]	RUA	C35-C34	-2.96	1.39	1.51
3	B	1110[A]	RUA	C35-C34	-2.96	1.39	1.51
3	B	1110[B]	RUA	C35-C34	-2.96	1.39	1.51
3	B	1110[A]	RUA	C29-C28	-2.95	1.39	1.51
3	A	1110[A]	RUA	C27-C28	-2.95	1.40	1.51
3	B	1110[A]	RUA	C5-C4	-2.95	1.39	1.51
3	A	1110[B]	RUA	C5-C4	-2.94	1.40	1.51
3	B	1110[B]	RUA	C29-C28	-2.91	1.40	1.51
3	A	1110[A]	RUA	C29-C28	-2.84	1.40	1.51
3	A	1110[B]	RUA	C29-C28	-2.81	1.40	1.51

All (92) bond angle outliers are listed below:

Mol	Chain	Res	Type	Atoms	Z	Observed(°)	Ideal(°)
3	B	1110[A]	RUA	C19-C18-C17	7.59	118.64	108.42
3	A	1110[A]	RUA	C19-C18-C17	7.36	118.33	108.42
3	B	1110[B]	RUA	C19-C18-C17	7.33	118.29	108.42
3	A	1110[B]	RUA	C19-C18-C17	6.85	117.64	108.42
3	B	1110[A]	RUA	C24-C23-C22	6.69	122.25	112.59
3	B	1110[B]	RUA	C21-C22-C23	6.57	119.76	109.41
3	A	1110[B]	RUA	C24-C23-C22	6.51	121.99	112.59
3	A	1110[A]	RUA	C3-C4-C5	6.32	122.15	111.44
3	B	1110[A]	RUA	C3-C4-C5	6.32	122.14	111.44
3	B	1110[B]	RUA	C3-C4-C5	6.28	122.08	111.44
3	A	1110[B]	RUA	C39-C22-C21	6.21	121.75	111.18
3	A	1110[B]	RUA	C27-C28-C29	6.13	121.83	111.44
3	A	1110[B]	RUA	C3-C4-C5	6.12	121.81	111.44
3	B	1110[B]	RUA	C27-C28-C29	6.07	121.72	111.44
3	B	1110[B]	RUA	C24-C23-C22	6.05	121.33	112.59
3	B	1110[A]	RUA	C27-C28-C29	5.96	121.54	111.44
3	A	1110[A]	RUA	C24-C23-C22	5.96	121.19	112.59
3	A	1110[A]	RUA	C12-C11-C10	5.94	121.50	111.44
3	B	1110[A]	RUA	C12-C11-C10	5.90	121.43	111.44
3	A	1110[A]	RUA	C36-C35-C34	5.89	121.41	111.44
3	B	1110[A]	RUA	C39-C22-C21	5.82	121.08	111.18
3	A	1110[A]	RUA	C27-C28-C29	5.81	121.29	111.44
3	A	1110[B]	RUA	C21-C22-C23	5.79	118.53	109.41
3	B	1110[A]	RUA	C36-C35-C34	5.66	121.02	111.44
3	A	1110[A]	RUA	C39-C22-C21	5.62	120.74	111.18
3	A	1110[B]	RUA	C36-C35-C34	5.61	120.94	111.44

Continued on next page...

Continued from previous page...

Mol	Chain	Res	Type	Atoms	Z	Observed(°)	Ideal(°)
3	B	1110[B]	RUA	C11-C12-N13	5.51	121.98	113.00
3	B	1110[B]	RUA	C36-C35-C34	5.46	120.68	111.44
3	A	1110[B]	RUA	C12-C11-C10	5.39	120.57	111.44
3	A	1110[A]	RUA	C21-C22-C23	5.31	117.77	109.41
3	A	1110[B]	RUA	C11-C12-N13	5.27	121.59	113.00
3	B	1110[B]	RUA	C12-C11-C10	5.26	120.34	111.44
3	A	1110[A]	RUA	C35-C36-N37	4.91	121.01	113.00
3	B	1110[A]	RUA	C11-C12-N13	4.89	120.97	113.00
3	A	1110[A]	RUA	C11-C12-N13	4.81	120.85	113.00
3	A	1110[B]	RUA	C35-C36-N37	4.81	120.83	113.00
3	B	1110[A]	RUA	C21-C22-C23	4.75	116.89	109.41
3	A	1110[A]	RUA	C23-C24-N25	4.68	120.62	113.00
3	B	1110[B]	RUA	C39-C22-C21	4.62	119.05	111.18
3	B	1110[A]	RUA	C39-C22-C23	4.56	122.03	112.09
3	B	1110[B]	RUA	C10-C9-C8	4.54	119.41	111.22
3	B	1110[B]	RUA	C35-C36-N37	4.54	120.40	113.00
3	B	1110[A]	RUA	C35-C36-N37	4.52	120.37	113.00
3	B	1110[B]	RUA	C34-C33-C32	4.50	119.33	111.22
3	A	1110[B]	RUA	C10-C9-C8	4.49	119.32	111.22
3	B	1110[B]	RUA	C4-C3-N2	4.45	120.25	113.00
3	A	1110[A]	RUA	C39-C22-C23	4.32	121.49	112.09
3	A	1110[A]	RUA	C28-C29-C30	4.27	120.13	111.42
3	A	1110[A]	RUA	C34-C33-C32	4.25	118.87	111.22
3	B	1110[B]	RUA	C5-C6-C7	4.24	118.86	111.22
3	A	1110[B]	RUA	C34-C33-C32	4.20	118.78	111.22
3	B	1110[A]	RUA	C10-C9-C8	4.19	118.78	111.22
3	A	1110[B]	RUA	C28-C29-C30	4.18	119.94	111.42
3	B	1110[B]	RUA	C39-C22-C23	4.18	121.19	112.09
3	B	1110[A]	RUA	C23-C24-N25	4.16	119.79	113.00
3	B	1110[B]	RUA	C28-C29-C30	4.11	119.80	111.42
3	B	1110[A]	RUA	C28-C29-C30	4.08	119.74	111.42
3	B	1110[A]	RUA	C35-C34-C33	4.02	119.61	111.42
3	A	1110[B]	RUA	C5-C6-C7	4.01	118.44	111.22
3	A	1110[B]	RUA	C35-C34-C33	4.00	119.57	111.42
3	A	1110[A]	RUA	C10-C9-C8	3.98	118.40	111.22
3	B	1110[A]	RUA	C34-C33-C32	3.98	118.39	111.22
3	A	1110[B]	RUA	C23-C24-N25	3.97	119.48	113.00
3	B	1110[A]	RUA	C5-C6-C7	3.94	118.32	111.22
3	B	1110[B]	RUA	C35-C34-C33	3.88	119.33	111.42
3	A	1110[A]	RUA	C4-C5-C6	3.87	119.31	111.42
3	B	1110[B]	RUA	C11-C10-C9	3.82	119.21	111.42
3	A	1110[B]	RUA	C11-C10-C9	3.82	119.20	111.42

Continued on next page...

Continued from previous page...

Mol	Chain	Res	Type	Atoms	Z	Observed(°)	Ideal(°)
3	A	1110[B]	RUA	C4-C5-C6	3.81	119.19	111.42
3	A	1110[A]	RUA	C28-C27-N26	3.81	119.21	113.00
3	B	1110[A]	RUA	C28-C27-N26	3.77	119.15	113.00
3	A	1110[A]	RUA	C11-C10-C9	3.75	119.06	111.42
3	A	1110[B]	RUA	C38-C17-C18	3.73	122.52	116.16
3	A	1110[A]	RUA	C5-C6-C7	3.73	117.94	111.22
3	B	1110[A]	RUA	C4-C5-C6	3.72	119.00	111.42
3	B	1110[A]	RUA	C29-C30-C31	3.67	117.83	111.22
3	B	1110[B]	RUA	C29-C30-C31	3.66	117.81	111.22
3	B	1110[A]	RUA	C4-C3-N2	3.64	118.94	113.00
3	B	1110[A]	RUA	C11-C10-C9	3.60	118.76	111.42
3	A	1110[A]	RUA	C35-C34-C33	3.57	118.70	111.42
3	A	1110[A]	RUA	C4-C3-N2	3.57	118.83	113.00
3	A	1110[B]	RUA	C4-C3-N2	3.56	118.80	113.00
3	A	1110[B]	RUA	C29-C30-C31	3.52	117.57	111.22
3	A	1110[B]	RUA	C39-C22-C23	3.50	119.71	112.09
3	B	1110[B]	RUA	C28-C27-N26	3.46	118.63	113.00
3	A	1110[A]	RUA	C29-C30-C31	3.43	117.41	111.22
3	B	1110[B]	RUA	C4-C5-C6	3.37	118.30	111.42
3	A	1110[B]	RUA	C28-C27-N26	3.17	118.17	113.00
3	B	1110[B]	RUA	C23-C24-N25	2.73	117.44	113.00
3	B	1110[B]	RUA	C38-C17-C18	2.58	120.56	116.16
3	A	1110[A]	RUA	C38-C17-C18	2.45	120.34	116.16
3	B	1110[A]	RUA	C38-C17-C18	2.21	119.92	116.16

All (28) chirality outliers are listed below:

Mol	Chain	Res	Type	Atom
3	B	1110[B]	RUA	C8
3	B	1110[B]	RUA	C31
3	B	1110[B]	RUA	C19
3	B	1110[B]	RUA	C32
3	B	1110[B]	RUA	C22
3	B	1110[B]	RUA	C20
3	B	1110[B]	RUA	C7
3	A	1110[B]	RUA	C8
3	A	1110[B]	RUA	C31
3	A	1110[B]	RUA	C19
3	A	1110[B]	RUA	C32
3	A	1110[B]	RUA	C22
3	A	1110[B]	RUA	C20
3	A	1110[B]	RUA	C7

Continued on next page...

Continued from previous page...

Mol	Chain	Res	Type	Atom
3	B	1110[A]	RUA	C8
3	B	1110[A]	RUA	C31
3	B	1110[A]	RUA	C19
3	B	1110[A]	RUA	C32
3	B	1110[A]	RUA	C22
3	B	1110[A]	RUA	C20
3	B	1110[A]	RUA	C7
3	A	1110[A]	RUA	C8
3	A	1110[A]	RUA	C31
3	A	1110[A]	RUA	C19
3	A	1110[A]	RUA	C32
3	A	1110[A]	RUA	C22
3	A	1110[A]	RUA	C20
3	A	1110[A]	RUA	C7

There are no torsion outliers.

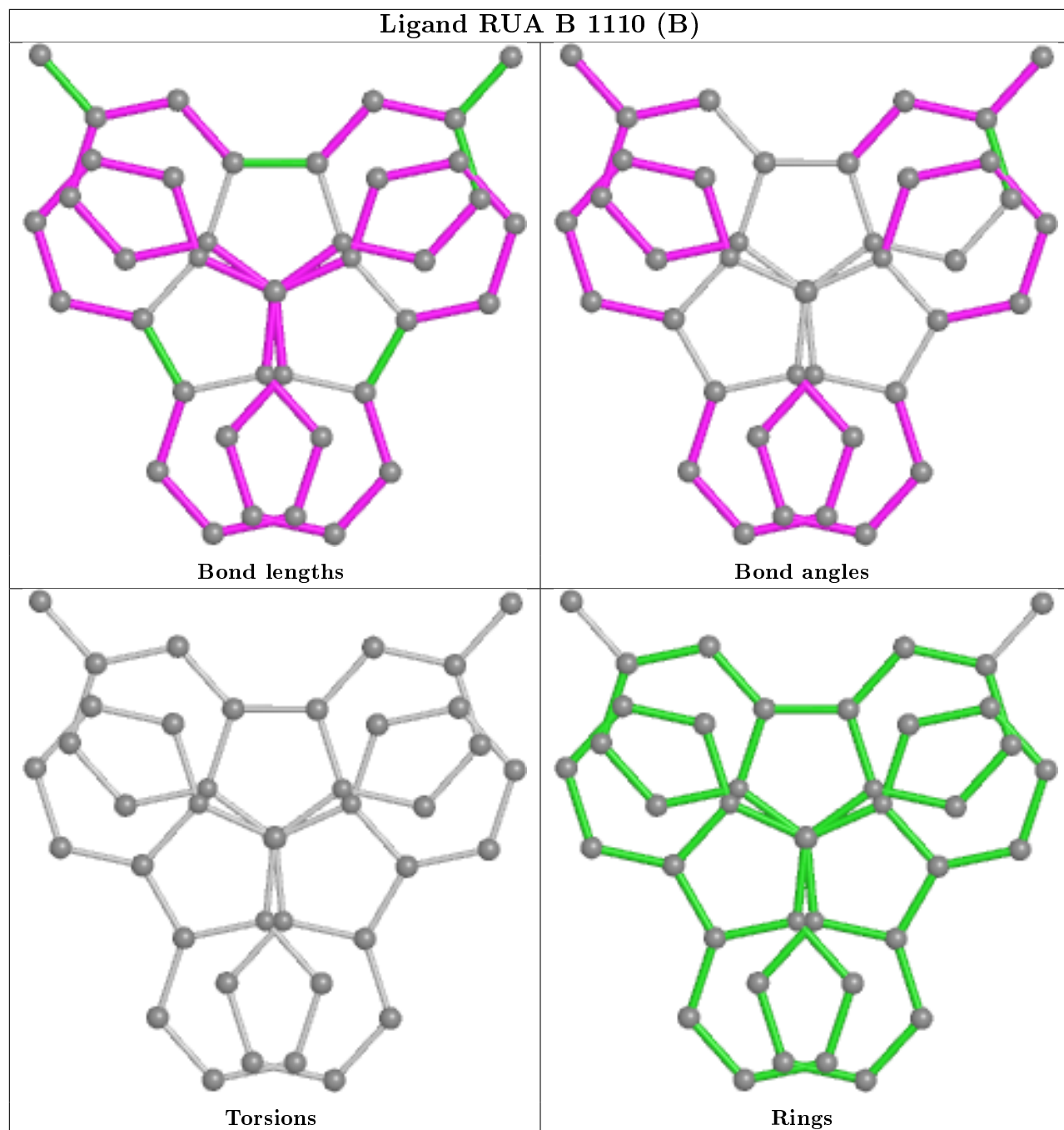
There are no ring outliers.

4 monomers are involved in 26 short contacts:

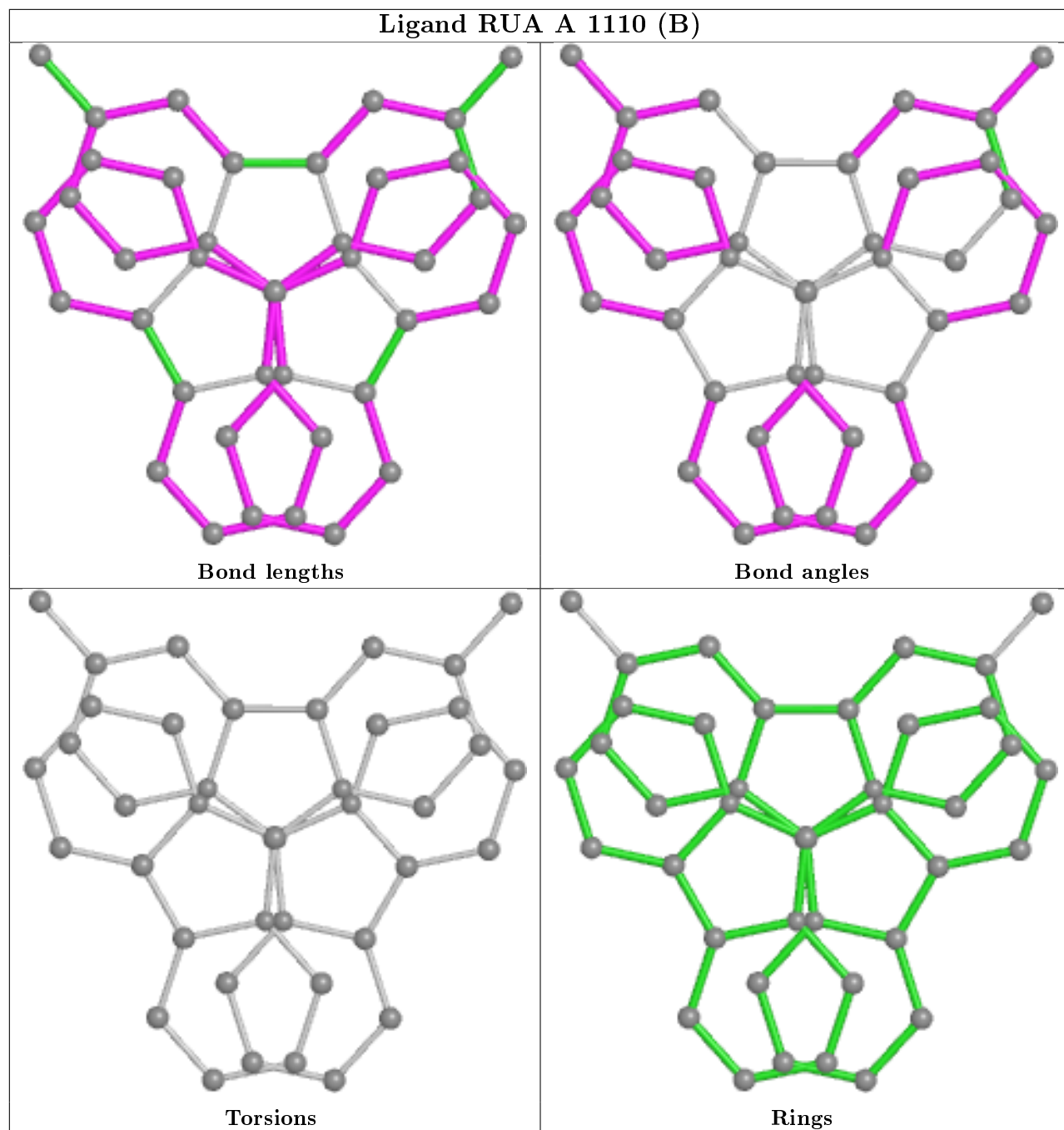
Mol	Chain	Res	Type	Clashes	Symm-Clashes
3	B	1110[B]	RUA	9	0
3	A	1110[B]	RUA	10	0
3	B	1110[A]	RUA	5	0
3	A	1110[A]	RUA	2	0

The following is a two-dimensional graphical depiction of Mogul quality analysis of bond lengths, bond angles, torsion angles, and ring geometry for all instances of the Ligand of Interest. In addition, ligands with molecular weight > 250 and outliers as shown on the validation Tables will also be included. For torsion angles, if less than 5% of the Mogul distribution of torsion angles is within 10 degrees of the torsion angle in question, then that torsion angle is considered an outlier. Any bond that is central to one or more torsion angles identified as an outlier by Mogul will be highlighted in the graph. For rings, the root-mean-square deviation (RMSD) between the ring in question and similar rings identified by Mogul is calculated over all ring torsion angles. If the average RMSD is greater than 60 degrees and the minimal RMSD between the ring in question and any Mogul-identified rings is also greater than 60 degrees, then that ring is considered an outlier. The outliers are highlighted in purple. The color gray indicates Mogul did not find sufficient equivalents in the CSD to analyse the geometry.

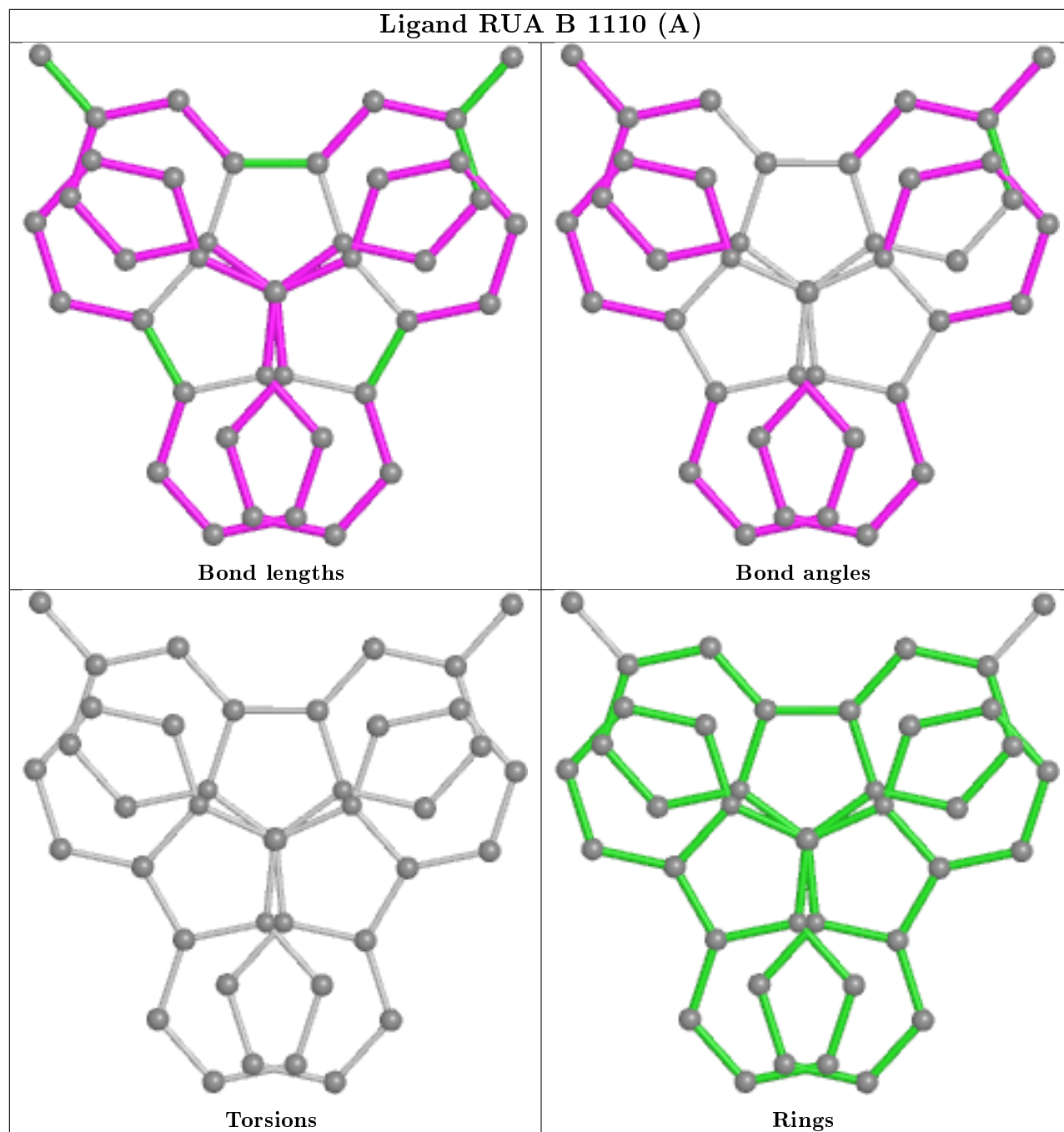
Ligand RUA B 1110 (B)

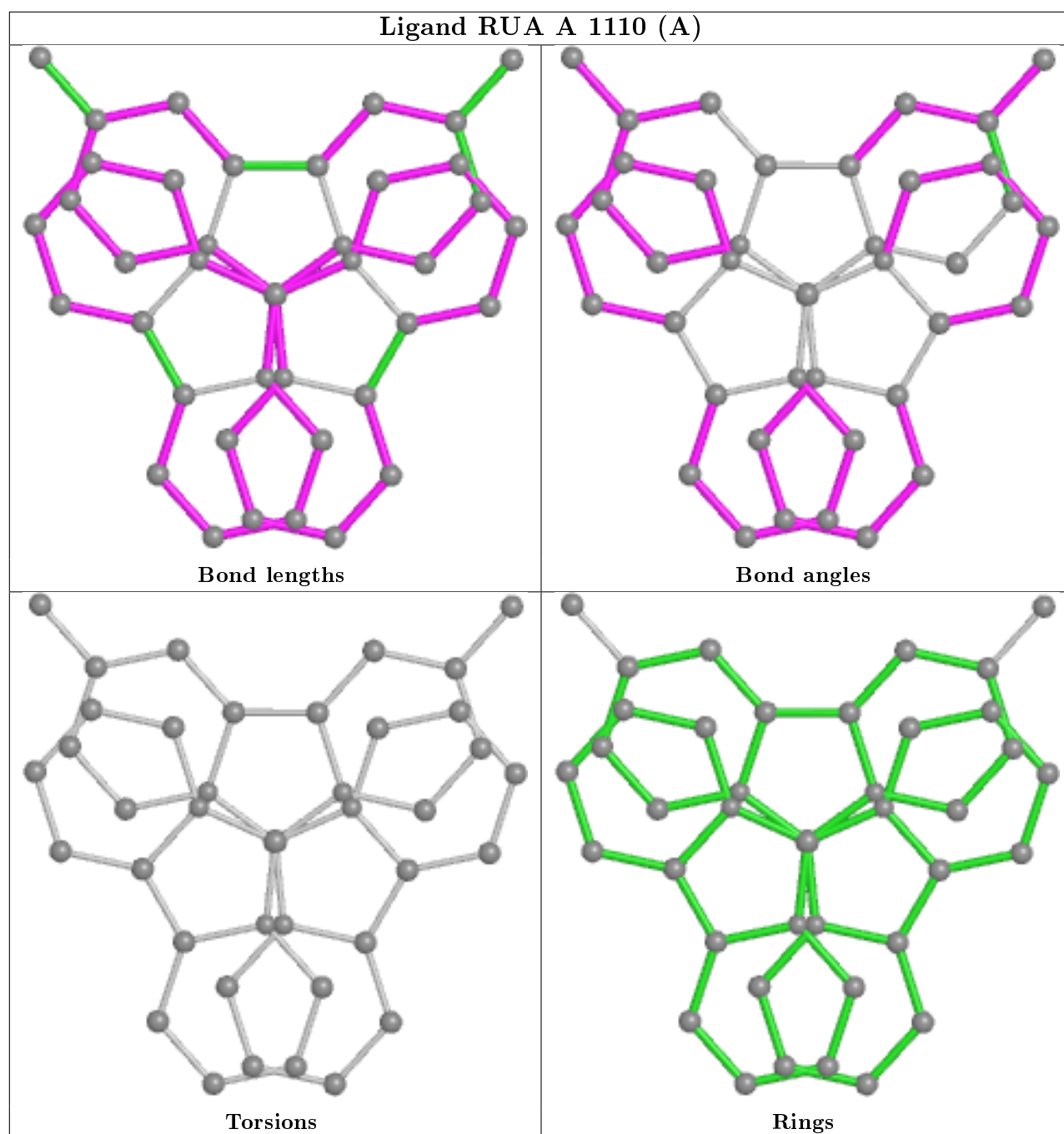


Ligand RUA A 1110 (B)



Ligand RUA B 1110 (A)





5.7 Other polymers [i](#)

There are no such residues in this entry.

5.8 Polymer linkage issues [i](#)

There are no chain breaks in this entry.

6 Fit of model and data

6.1 Protein, DNA and RNA chains

Unable to reproduce the depositors R factor - this section is therefore empty.

6.2 Non-standard residues in protein, DNA, RNA chains

Unable to reproduce the depositors R factor - this section is therefore empty.

6.3 Carbohydrates

Unable to reproduce the depositors R factor - this section is therefore empty.

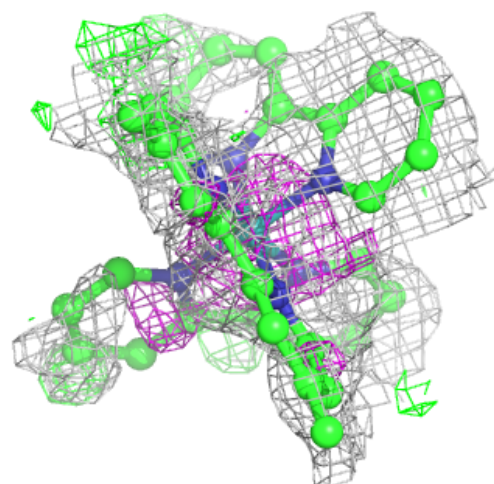
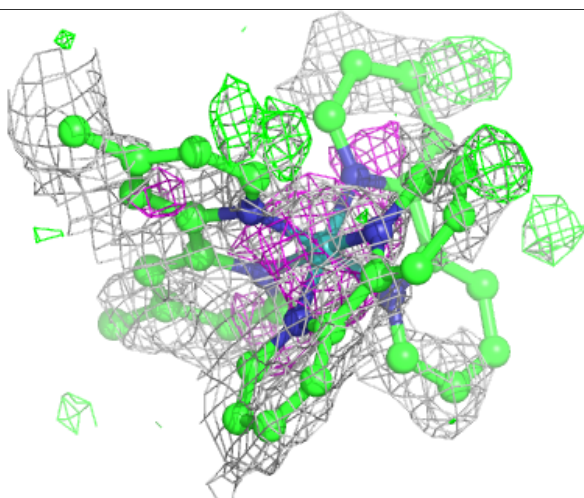
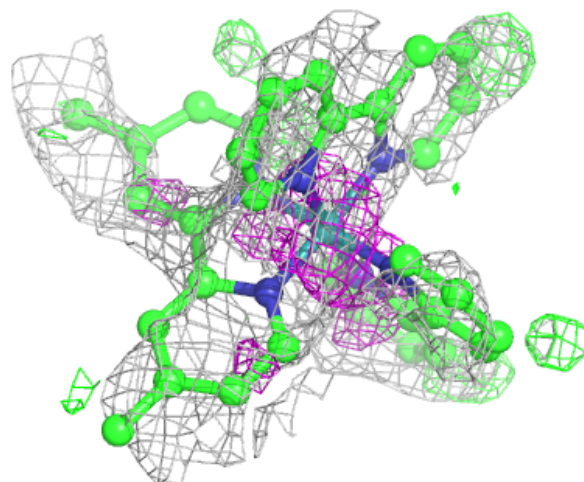
6.4 Ligands

Unable to reproduce the depositors R factor - this section is therefore empty.

The following is a graphical depiction of the model fit to experimental electron density of all instances of the Ligand of Interest. In addition, ligands with molecular weight > 250 and outliers as shown on the geometry validation Tables will also be included. Each fit is shown from different orientation to approximate a three-dimensional view.

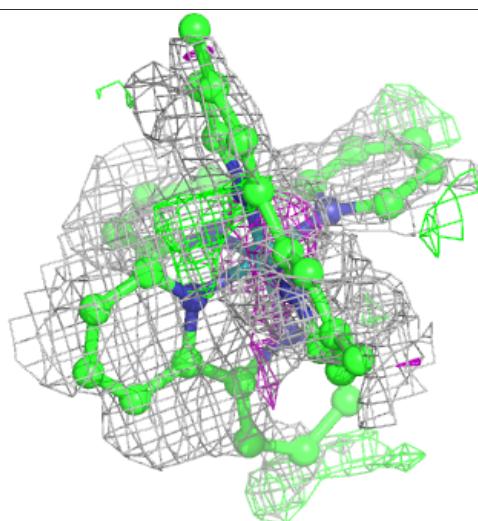
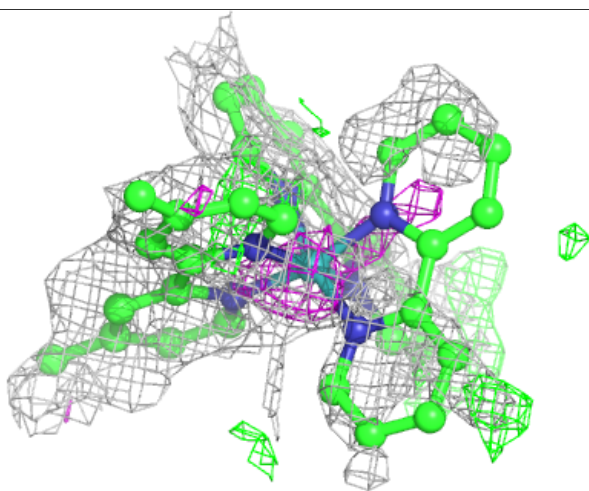
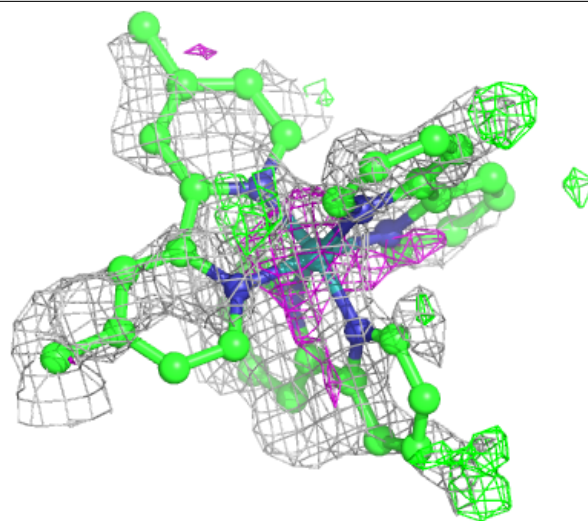
Electron density around RUA B 1110 (B):

$2mF_o-DF_c$ (at 0.7 rmsd) in gray
 mF_o-DF_c (at 3 rmsd) in purple (negative)
and green (positive)



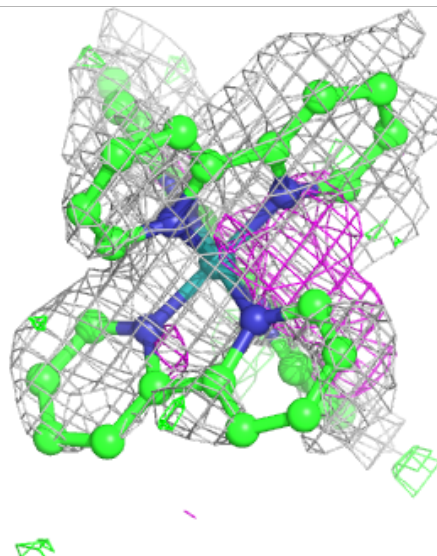
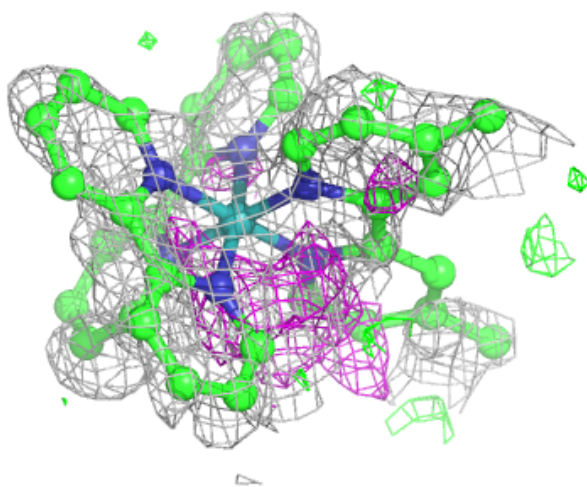
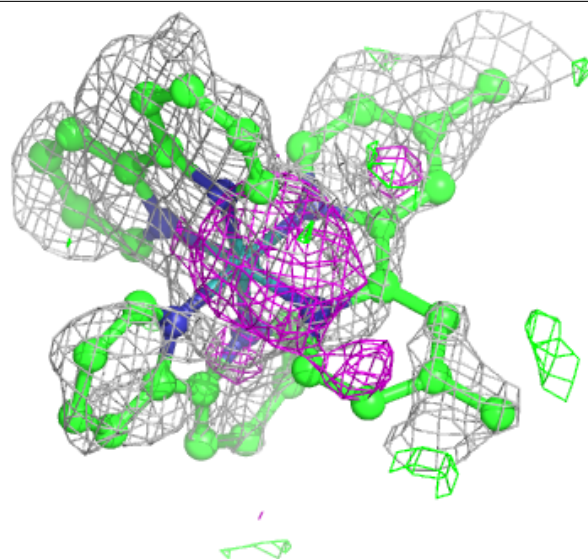
Electron density around RUA A 1110 (B):

$2mF_o-DF_c$ (at 0.7 rmsd) in gray
 mF_o-DF_c (at 3 rmsd) in purple (negative)
and green (positive)



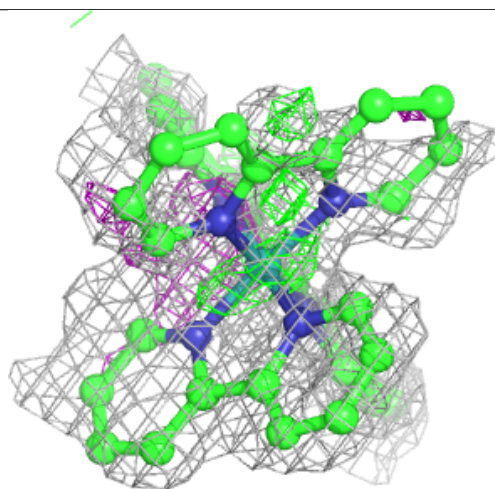
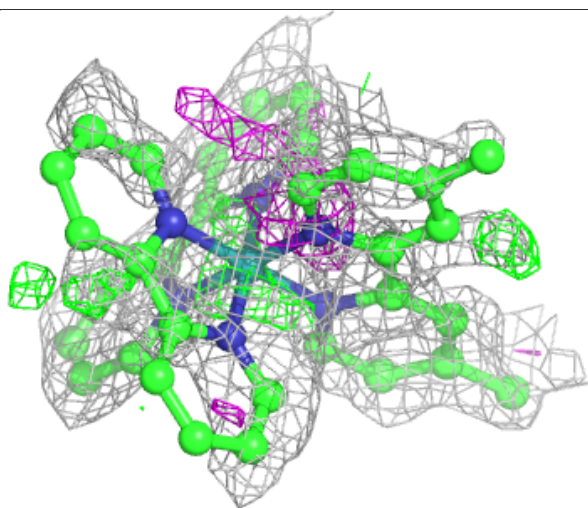
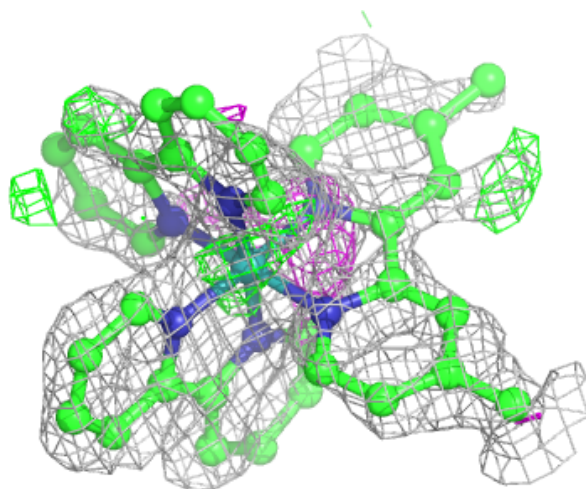
Electron density around RUA B 1110 (A):

$2mF_o-DF_c$ (at 0.7 rmsd) in gray
 mF_o-DF_c (at 3 rmsd) in purple (negative)
and green (positive)



Electron density around RUA A 1110 (A):

$2mF_o-DF_c$ (at 0.7 rmsd) in gray
 mF_o-DF_c (at 3 rmsd) in purple (negative)
and green (positive)



6.5 Other polymers ⓘ

Unable to reproduce the depositors R factor - this section is therefore empty.