



wwPDB X-ray Structure Validation Summary Report ⓘ

Oct 14, 2021 – 02:16 PM EDT

PDB ID : 3BTJ
Title : crystal structure of QacR(E58Q) bound to dequalinium
Authors : Schumacher, M.A.; Schuman, J.T.; Brennan, R.G.
Deposited on : 2007-12-28
Resolution : 2.98 Å(reported)

This is a wwPDB X-ray Structure Validation Summary Report for a publicly released PDB entry.

We welcome your comments at validation@mail.wwpdb.org

A user guide is available at

<https://www.wwpdb.org/validation/2017/XrayValidationReportHelp>

with specific help available everywhere you see the ⓘ symbol.

The following versions of software and data (see [references ⓘ](#)) were used in the production of this report:

MolProbity : 4.02b-467
Mogul : 1.8.5 (274361), CSD as541be (2020)
Xtriage (Phenix) : 1.13
EDS : 2.23.2
buster-report : 1.1.7 (2018)
Percentile statistics : 20191225.v01 (using entries in the PDB archive December 25th 2019)
Refmac : 5.8.0158
CCP4 : 7.0.044 (Gargrove)
Ideal geometry (proteins) : Engh & Huber (2001)
Ideal geometry (DNA, RNA) : Parkinson et al. (1996)
Validation Pipeline (wwPDB-VP) : 2.23.2

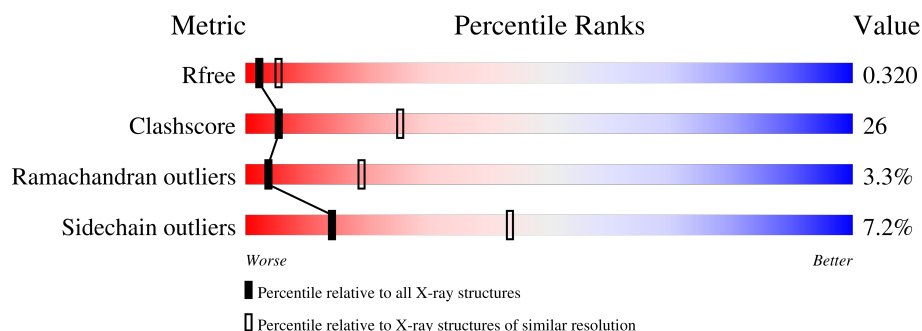
1 Overall quality at a glance ⓘ

The following experimental techniques were used to determine the structure:

X-RAY DIFFRACTION

The reported resolution of this entry is 2.98 Å.

Percentile scores (ranging between 0-100) for global validation metrics of the entry are shown in the following graphic. The table shows the number of entries on which the scores are based.



Metric	Whole archive (#Entries)	Similar resolution (#Entries, resolution range(Å))
R_{free}	130704	2754 (3.00-2.96)
Clashscore	141614	3103 (3.00-2.96)
Ramachandran outliers	138981	2993 (3.00-2.96)
Sidechain outliers	138945	2996 (3.00-2.96)

The table below summarises the geometric issues observed across the polymeric chains and their fit to the electron density. The red, orange, yellow and green segments of the lower bar indicate the fraction of residues that contain outliers for ≥ 3 , 2, 1 and 0 types of geometric quality criteria respectively. A grey segment represents the fraction of residues that are not modelled. The numeric value for each fraction is indicated below the corresponding segment, with a dot representing fractions $\leq 5\%$.

Mol	Chain	Length	Quality of chain
1	A	188	61% (green) 35% (yellow) . .. (red/orange/grey)
1	B	188	43% (green) 45% (yellow) 9% (orange) .. (red/grey)
1	D	188	48% (green) 45% (yellow) 5% (orange) . (red/grey)
1	E	188	55% (green) 39% (yellow) 5% (orange) . (red/grey)

The following table lists non-polymeric compounds, carbohydrate monomers and non-standard residues in protein, DNA, RNA chains that are outliers for geometric or electron-density-fit criteria:

Mol	Type	Chain	Res	Chirality	Geometry	Clashes	Electron density
3	DEQ	A	201	-	X	-	-

2 Entry composition

There are 4 unique types of molecules in this entry. The entry contains 6313 atoms, of which 0 are hydrogens and 0 are deuteriums.

In the tables below, the ZeroOcc column contains the number of atoms modelled with zero occupancy, the AltConf column contains the number of residues with at least one atom in alternate conformation and the Trace column contains the number of residues modelled with at most 2 atoms.

- Molecule 1 is a protein called HTH-type transcriptional regulator qacR.

Mol	Chain	Residues	Atoms					ZeroOcc	AltConf	Trace
1	B	186	Total	C	N	O	S	0	0	0
			1547	998	253	294	2			
1	D	186	Total	C	N	O	S	0	0	0
			1547	998	253	294	2			
1	A	186	Total	C	N	O	S	0	0	0
			1547	998	253	294	2			
1	E	186	Total	C	N	O	S	0	0	0
			1547	998	253	294	2			

There are 12 discrepancies between the modelled and reference sequences:

Chain	Residue	Modelled	Actual	Comment	Reference
B	58	GLN	GLU	engineered mutation	UNP P0A0N3
B	72	ALA	CYS	engineered mutation	UNP P0A0N3
B	141	SER	CYS	engineered mutation	UNP P0A0N3
D	58	GLN	GLU	engineered mutation	UNP P0A0N3
D	72	ALA	CYS	engineered mutation	UNP P0A0N3
D	141	SER	CYS	engineered mutation	UNP P0A0N3
A	58	GLN	GLU	engineered mutation	UNP P0A0N3
A	72	ALA	CYS	engineered mutation	UNP P0A0N3
A	141	SER	CYS	engineered mutation	UNP P0A0N3
E	58	GLN	GLU	engineered mutation	UNP P0A0N3
E	72	ALA	CYS	engineered mutation	UNP P0A0N3
E	141	SER	CYS	engineered mutation	UNP P0A0N3

- Molecule 2 is SULFATE ION (three-letter code: SO4) (formula: O₄S).



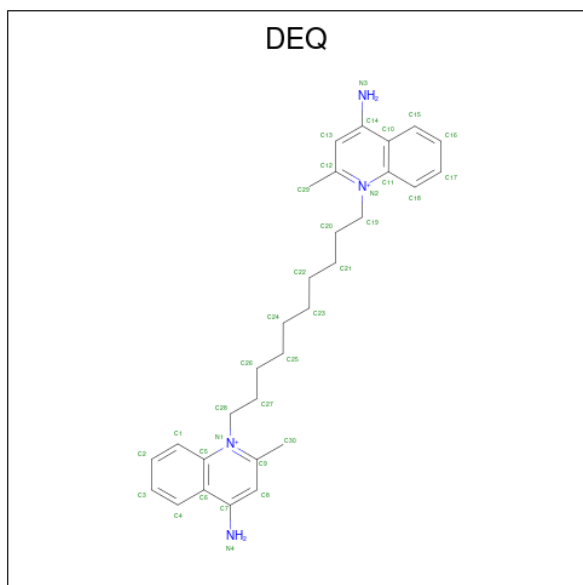
Mol	Chain	Residues	Atoms			ZeroOcc	AltConf
2	B	1	Total	O	S	0	0
			5	4	1		
2	D	1	Total	O	S	0	0
			5	4	1		
2	D	1	Total	O	S	0	0
			5	4	1		
2	D	1	Total	O	S	0	0
			5	4	1		
2	D	1	Total	O	S	0	0
			5	4	1		
2	A	1	Total	O	S	0	0
			5	4	1		
2	A	1	Total	O	S	0	0
			5	4	1		
2	A	1	Total	O	S	0	0
			5	4	1		
2	A	1	Total	O	S	0	0
			5	4	1		
2	A	1	Total	O	S	0	0
			5	4	1		
2	E	1	Total	O	S	0	0
			5	4	1		
2	E	1	Total	O	S	0	0
			5	4	1		

Continued on next page...

Continued from previous page...

Mol	Chain	Residues	Atoms			ZeroOcc	AltConf
2	E	1	Total	O	S	0	0
			5	4	1		
2	E	1	Total	O	S	0	0
			5	4	1		
2	E	1	Total	O	S	0	0
			5	4	1		

- Molecule 3 is DEQUALINIUM (three-letter code: DEQ) (formula: $C_{30}H_{40}N_4$).



Mol	Chain	Residues	Atoms			ZeroOcc	AltConf
3	A	1	Total	C	N	0	0
			34	30	4		

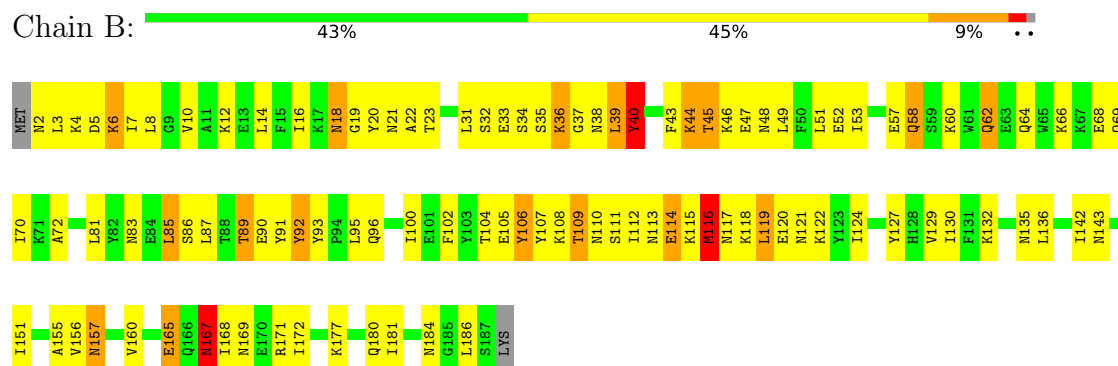
- Molecule 4 is water.

Mol	Chain	Residues	Atoms			ZeroOcc	AltConf
4	D	1	Total	O		0	0
			1	1			
4	A	4	Total	O		0	0
			4	4			
4	E	1	Total	O		0	0
			1	1			

3 Residue-property plots

These plots are drawn for all protein, RNA, DNA and oligosaccharide chains in the entry. The first graphic for a chain summarises the proportions of the various outlier classes displayed in the second graphic. The second graphic shows the sequence view annotated by issues in geometry. Residues are color-coded according to the number of geometric quality criteria for which they contain at least one outlier: green = 0, yellow = 1, orange = 2 and red = 3 or more. Stretches of 2 or more consecutive residues without any outlier are shown as a green connector. Residues present in the sample, but not in the model, are shown in grey.

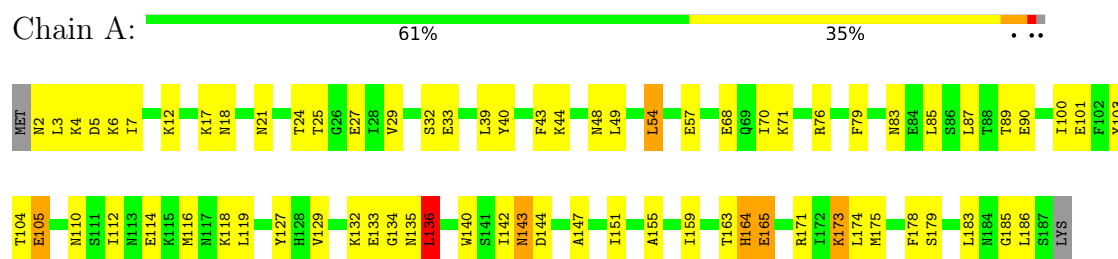
- Molecule 1: HTH-type transcriptional regulator qacR



- Molecule 1: HTH-type transcriptional regulator qacR

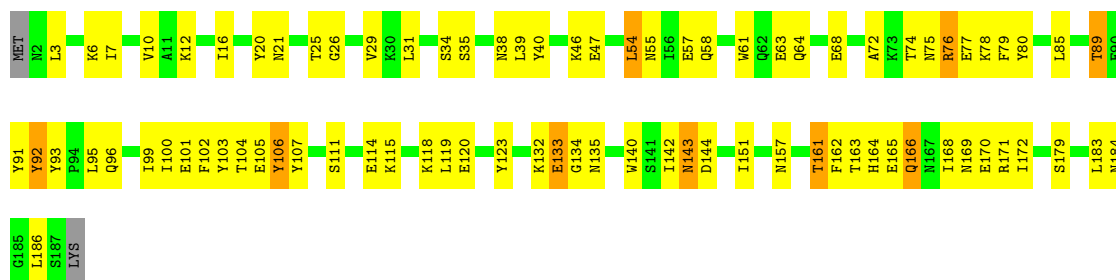


- Molecule 1: HTH-type transcriptional regulator qacR



- Molecule 1: HTH-type transcriptional regulator qacR





4 Data and refinement statistics

Property	Value	Source
Space group	P 42 21 2	Depositor
Cell constants a, b, c, α , β , γ	171.90Å 171.90Å 94.50Å 90.00° 90.00° 90.00°	Depositor
Resolution (Å)	76.88 – 2.98 76.88 – 2.98	Depositor EDS
% Data completeness (in resolution range)	99.3 (76.88-2.98) 99.4 (76.88-2.98)	Depositor EDS
R_{merge}	0.07	Depositor
R_{sym}	0.07	Depositor
$\langle I/\sigma(I) \rangle$ ¹	1.98 (at 2.96Å)	Xtriage
Refinement program	CNS 1.1	Depositor
R, R_{free}	0.216 , 0.264 0.297 , 0.320	Depositor DCC
R_{free} test set	1439 reflections (4.91%)	wwPDB-VP
Wilson B-factor (Å ²)	77.6	Xtriage
Anisotropy	0.170	Xtriage
Bulk solvent k_{sol} (e/Å ³), B_{sol} (Å ²)	0.35 , 85.1	EDS
L-test for twinning ²	$\langle L \rangle = 0.49$, $\langle L^2 \rangle = 0.32$	Xtriage
Estimated twinning fraction	No twinning to report.	Xtriage
F_o, F_c correlation	0.88	EDS
Total number of atoms	6313	wwPDB-VP
Average B, all atoms (Å ²)	70.0	wwPDB-VP

Xtriage's analysis on translational NCS is as follows: *The largest off-origin peak in the Patterson function is 3.89% of the height of the origin peak. No significant pseudotranslation is detected.*

¹Intensities estimated from amplitudes.

²Theoretical values of $\langle |L| \rangle$, $\langle L^2 \rangle$ for acentric reflections are 0.5, 0.333 respectively for untwinned datasets, and 0.375, 0.2 for perfectly twinned datasets.

5 Model quality [i](#)

5.1 Standard geometry [i](#)

Bond lengths and bond angles in the following residue types are not validated in this section: SO4, DEQ

The Z score for a bond length (or angle) is the number of standard deviations the observed value is removed from the expected value. A bond length (or angle) with $|Z| > 5$ is considered an outlier worth inspection. RMSZ is the root-mean-square of all Z scores of the bond lengths (or angles).

Mol	Chain	Bond lengths		Bond angles	
		RMSZ	$\# Z > 5$	RMSZ	$\# Z > 5$
1	A	0.44	0/1578	0.61	0/2126
1	B	0.38	0/1578	0.56	0/2126
1	D	0.40	0/1578	0.60	0/2126
1	E	0.42	0/1578	0.60	0/2126
All	All	0.41	0/6312	0.59	0/8504

There are no bond length outliers.

There are no bond angle outliers.

There are no chirality outliers.

There are no planarity outliers.

5.2 Too-close contacts [i](#)

In the following table, the Non-H and H(model) columns list the number of non-hydrogen atoms and hydrogen atoms in the chain respectively. The H(added) column lists the number of hydrogen atoms added and optimized by MolProbity. The Clashes column lists the number of clashes within the asymmetric unit, whereas Symm-Clashes lists symmetry-related clashes.

Mol	Chain	Non-H	H(model)	H(added)	Clashes	Symm-Clashes
1	A	1547	0	1538	72	0
1	B	1547	0	1538	116	0
1	D	1547	0	1538	77	2
1	E	1547	0	1538	78	0
2	A	30	0	0	2	0
2	B	5	0	0	0	0
2	D	25	0	0	0	1
2	E	25	0	0	2	0
3	A	34	0	40	7	0

Continued on next page...

Continued from previous page...

Mol	Chain	Non-H	H(model)	H(added)	Clashes	Symm-Clashes
4	A	4	0	0	0	0
4	D	1	0	0	0	0
4	E	1	0	0	0	0
All	All	6313	0	6192	326	2

The all-atom clashscore is defined as the number of clashes found per 1000 atoms (including hydrogen atoms). The all-atom clashscore for this structure is 26.

The worst 5 of 326 close contacts within the same asymmetric unit are listed below, sorted by their clash magnitude.

Atom-1	Atom-2	Interatomic distance (Å)	Clash overlap (Å)
1:B:89:THR:HG22	1:B:91:TYR:H	1.16	1.09
1:D:142:ILE:HD11	1:D:186:LEU:HD13	1.35	1.05
1:A:135:ASN:HD21	1:A:142:ILE:H	0.95	0.92
1:D:157:ASN:O	1:D:161:THR:HG23	1.78	0.83
1:E:3:LEU:O	1:E:7:ILE:HG12	1.77	0.83

All (2) symmetry-related close contacts are listed below. The label for Atom-2 includes the symmetry operator and encoded unit-cell translations to be applied.

Atom-1	Atom-2	Interatomic distance (Å)	Clash overlap (Å)
1:D:30:LYS:CB	2:D:779:SO4:O4[7_556]	1.84	0.36
1:D:13:GLU:CG	1:D:31:LEU:O[7_556]	1.87	0.33

5.3 Torsion angles ⓘ

5.3.1 Protein backbone ⓘ

In the following table, the Percentiles column shows the percent Ramachandran outliers of the chain as a percentile score with respect to all X-ray entries followed by that with respect to entries of similar resolution.

The Analysed column shows the number of residues for which the backbone conformation was analysed, and the total number of residues.

Mol	Chain	Analysed	Favoured	Allowed	Outliers	Percentiles
1	A	184/188 (98%)	166 (90%)	15 (8%)	3 (2%)	9 38
1	B	184/188 (98%)	144 (78%)	27 (15%)	13 (7%)	1 5

Continued on next page...

Continued from previous page...

Mol	Chain	Analysed	Favoured	Allowed	Outliers	Percentiles	
1	D	184/188 (98%)	161 (88%)	19 (10%)	4 (2%)	6	29
1	E	184/188 (98%)	161 (88%)	19 (10%)	4 (2%)	6	29
All	All	736/752 (98%)	632 (86%)	80 (11%)	24 (3%)	4	19

5 of 24 Ramachandran outliers are listed below:

Mol	Chain	Res	Type
1	B	44	LYS
1	B	89	THR
1	A	164	HIS
1	E	166	GLN
1	B	33	GLU

5.3.2 Protein sidechains ⓘ

In the following table, the Percentiles column shows the percent sidechain outliers of the chain as a percentile score with respect to all X-ray entries followed by that with respect to entries of similar resolution.

The Analysed column shows the number of residues for which the sidechain conformation was analysed, and the total number of residues.

Mol	Chain	Analysed	Rotameric	Outliers	Percentiles	
1	A	169/171 (99%)	156 (92%)	13 (8%)	13	40
1	B	169/171 (99%)	150 (89%)	19 (11%)	6	23
1	D	169/171 (99%)	160 (95%)	9 (5%)	22	56
1	E	169/171 (99%)	161 (95%)	8 (5%)	26	61
All	All	676/684 (99%)	627 (93%)	49 (7%)	14	43

5 of 49 residues with a non-rotameric sidechain are listed below:

Mol	Chain	Res	Type
1	A	33	GLU
1	A	105	GLU
1	A	48	ASN
1	A	70	ILE
1	A	136	LEU

Sometimes sidechains can be flipped to improve hydrogen bonding and reduce clashes. 5 of 46 such sidechains are listed below:

Mol	Chain	Res	Type
1	A	62	GLN
1	A	180	GLN
1	A	83	ASN
1	A	135	ASN
1	E	55	ASN

5.3.3 RNA [i](#)

There are no RNA molecules in this entry.

5.4 Non-standard residues in protein, DNA, RNA chains [i](#)

There are no non-standard protein/DNA/RNA residues in this entry.

5.5 Carbohydrates [i](#)

There are no monosaccharides in this entry.

5.6 Ligand geometry [i](#)

18 ligands are modelled in this entry.

In the following table, the Counts columns list the number of bonds (or angles) for which Mogul statistics could be retrieved, the number of bonds (or angles) that are observed in the model and the number of bonds (or angles) that are defined in the Chemical Component Dictionary. The Link column lists molecule types, if any, to which the group is linked. The Z score for a bond length (or angle) is the number of standard deviations the observed value is removed from the expected value. A bond length (or angle) with $|Z| > 2$ is considered an outlier worth inspection. RMSZ is the root-mean-square of all Z scores of the bond lengths (or angles).

Mol	Type	Chain	Res	Link	Bond lengths			Bond angles		
					Counts	RMSZ	$\# Z > 2$	Counts	RMSZ	$\# Z > 2$
2	SO4	A	801	-	4,4,4	0.30	0	6,6,6	0.10	0
2	SO4	D	280	-	4,4,4	0.25	0	6,6,6	0.05	0
2	SO4	D	999	-	4,4,4	0.26	0	6,6,6	0.10	0
2	SO4	A	279	-	4,4,4	0.30	0	6,6,6	0.12	0
2	SO4	D	400	-	4,4,4	0.26	0	6,6,6	0.07	0
2	SO4	D	779	-	4,4,4	0.27	0	6,6,6	0.08	0
2	SO4	E	900	-	4,4,4	0.29	0	6,6,6	0.23	0
2	SO4	E	249	-	4,4,4	0.33	0	6,6,6	0.14	0
2	SO4	E	399	-	4,4,4	0.25	0	6,6,6	0.08	0
2	SO4	E	799	-	4,4,4	0.29	0	6,6,6	0.14	0

Mol	Type	Chain	Res	Link	Bond lengths			Bond angles		
					Counts	RMSZ	# Z > 2	Counts	RMSZ	# Z > 2
2	SO4	E	239	-	4,4,4	0.27	0	6,6,6	0.11	0
2	SO4	A	299	-	4,4,4	0.29	0	6,6,6	0.08	0
2	SO4	A	699	-	4,4,4	0.31	0	6,6,6	0.13	0
3	DEQ	A	201	-	35,37,37	5.54	15 (42%)	42,50,50	4.67	24 (57%)
2	SO4	A	599	-	4,4,4	0.27	0	6,6,6	0.12	0
2	SO4	B	1000	-	4,4,4	0.25	0	6,6,6	0.09	0
2	SO4	D	899	-	4,4,4	0.26	0	6,6,6	0.07	0
2	SO4	A	595	-	4,4,4	0.22	0	6,6,6	0.11	0

In the following table, the Chirals column lists the number of chiral outliers, the number of chiral centers analysed, the number of these observed in the model and the number defined in the Chemical Component Dictionary. Similar counts are reported in the Torsion and Rings columns. '-' means no outliers of that kind were identified.

Mol	Type	Chain	Res	Link	Chirals	Torsions	Rings
3	DEQ	A	201	-	-	4/13/13/13	0/4/4/4

The worst 5 of 15 bond length outliers are listed below:

Mol	Chain	Res	Type	Atoms	Z	Observed(Å)	Ideal(Å)
3	A	201	DEQ	C12-N2	17.62	1.57	1.36
3	A	201	DEQ	C11-N2	17.30	1.62	1.40
3	A	201	DEQ	C5-N1	14.21	1.58	1.40
3	A	201	DEQ	C9-N1	11.17	1.49	1.36
3	A	201	DEQ	C10-C11	4.39	1.49	1.42

The worst 5 of 24 bond angle outliers are listed below:

Mol	Chain	Res	Type	Atoms	Z	Observed(°)	Ideal(°)
3	A	201	DEQ	C19-N2-C11	18.77	135.64	118.90
3	A	201	DEQ	C12-N2-C11	-10.92	111.39	122.15
3	A	201	DEQ	C28-N1-C5	9.88	127.72	118.90
3	A	201	DEQ	C27-C26-C25	6.83	149.12	114.42
3	A	201	DEQ	C14-C10-C11	5.49	121.68	118.35

There are no chirality outliers.

All (4) torsion outliers are listed below:

Mol	Chain	Res	Type	Atoms
3	A	201	DEQ	C27-C28-N1-C5
3	A	201	DEQ	C27-C28-N1-C9

Continued on next page...

Continued from previous page...

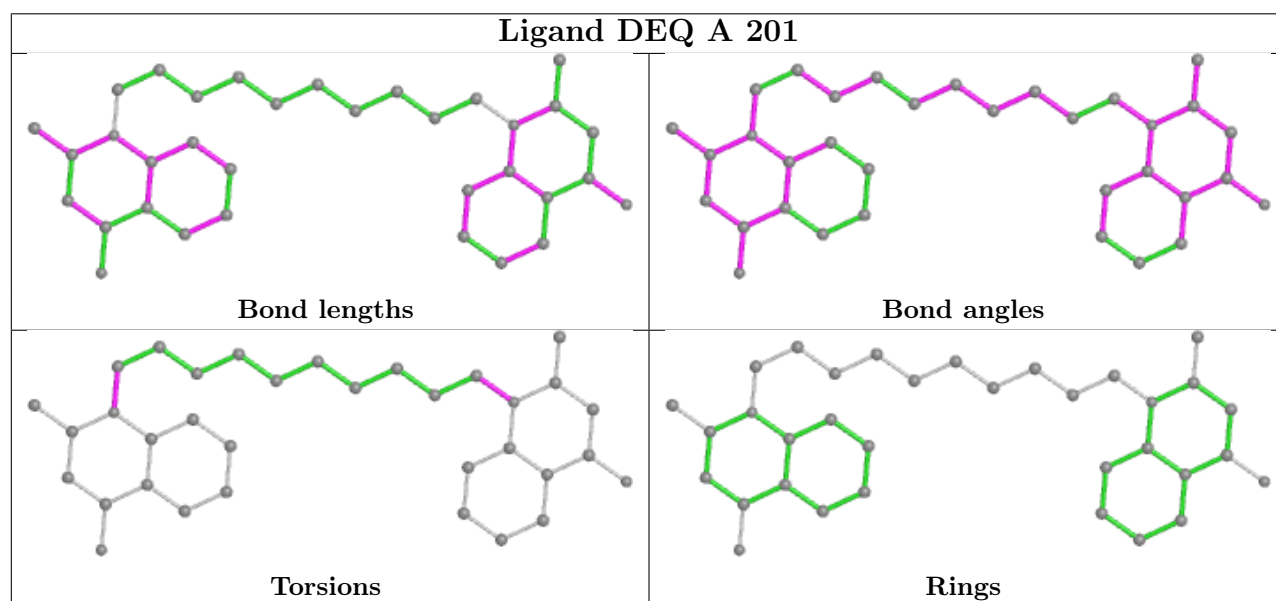
Mol	Chain	Res	Type	Atoms
3	A	201	DEQ	C20-C19-N2-C11
3	A	201	DEQ	C20-C19-N2-C12

There are no ring outliers.

6 monomers are involved in 12 short contacts:

Mol	Chain	Res	Type	Clashes	Symm-Clashes
2	A	279	SO4	1	0
2	D	779	SO4	0	1
2	E	900	SO4	1	0
2	E	399	SO4	1	0
3	A	201	DEQ	7	0
2	A	595	SO4	1	0

The following is a two-dimensional graphical depiction of Mogul quality analysis of bond lengths, bond angles, torsion angles, and ring geometry for all instances of the Ligand of Interest. In addition, ligands with molecular weight > 250 and outliers as shown on the validation Tables will also be included. For torsion angles, if less than 5% of the Mogul distribution of torsion angles is within 10 degrees of the torsion angle in question, then that torsion angle is considered an outlier. Any bond that is central to one or more torsion angles identified as an outlier by Mogul will be highlighted in the graph. For rings, the root-mean-square deviation (RMSD) between the ring in question and similar rings identified by Mogul is calculated over all ring torsion angles. If the average RMSD is greater than 60 degrees and the minimal RMSD between the ring in question and any Mogul-identified rings is also greater than 60 degrees, then that ring is considered an outlier. The outliers are highlighted in purple. The color gray indicates Mogul did not find sufficient equivalents in the CSD to analyse the geometry.



5.7 Other polymers [i](#)

There are no such residues in this entry.

5.8 Polymer linkage issues [i](#)

There are no chain breaks in this entry.

6 Fit of model and data ⓘ

6.1 Protein, DNA and RNA chains ⓘ

Unable to reproduce the depositors R factor - this section is therefore empty.

6.2 Non-standard residues in protein, DNA, RNA chains ⓘ

Unable to reproduce the depositors R factor - this section is therefore empty.

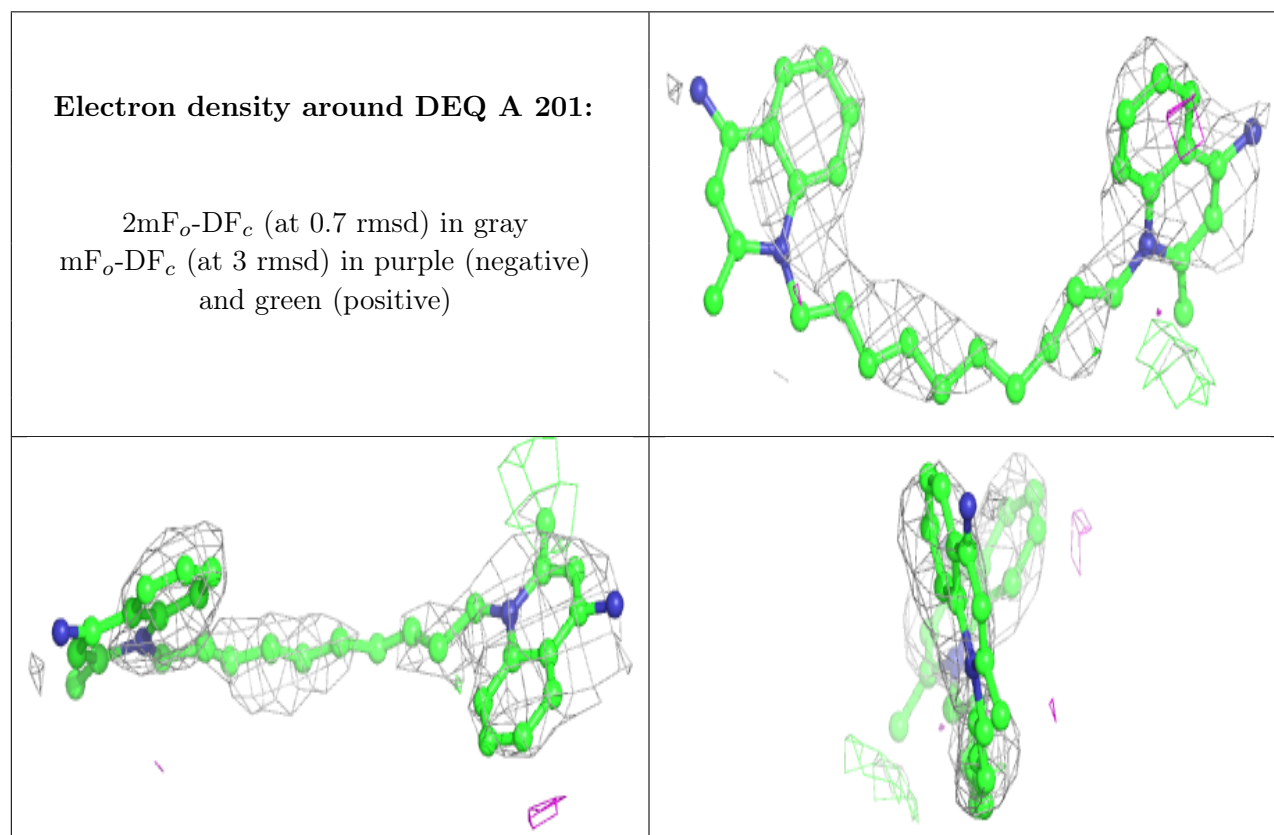
6.3 Carbohydrates ⓘ

Unable to reproduce the depositors R factor - this section is therefore empty.

6.4 Ligands ⓘ

Unable to reproduce the depositors R factor - this section is therefore empty.

The following is a graphical depiction of the model fit to experimental electron density of all instances of the Ligand of Interest. In addition, ligands with molecular weight > 250 and outliers as shown on the geometry validation Tables will also be included. Each fit is shown from different orientation to approximate a three-dimensional view.



6.5 Other polymers [i](#)

Unable to reproduce the depositors R factor - this section is therefore empty.