



Full wwPDB EM Validation Report ⓘ

Nov 16, 2022 – 04:41 PM JST

PDB ID : 7BT7
EMDB ID : EMD-30171
Title : F-actin-ADP complex structure
Authors : Kumari, A.; Ragunath, V.K.; Sirajuddin, M.
Deposited on : 2020-03-31
Resolution : 3.80 Å(reported)
Based on initial model : 5ONV

This is a Full wwPDB EM Validation Report for a publicly released PDB entry.

We welcome your comments at validation@mail.wwpdb.org

A user guide is available at

<https://www.wwpdb.org/validation/2017/EMValidationReportHelp>
with specific help available everywhere you see the ⓘ symbol.

The types of validation reports are described at

<http://www.wwpdb.org/validation/2017/FAQs#types>.

The following versions of software and data (see [references ⓘ](#)) were used in the production of this report:

EMDB validation analysis : 0.0.1.dev43
Mogul : 1.8.5 (274361), CSD as541be (2020)
MolProbity : 4.02b-467
buster-report : 1.1.7 (2018)
Percentile statistics : 20191225.v01 (using entries in the PDB archive December 25th 2019)
MapQ : 1.9.9
Ideal geometry (proteins) : Engh & Huber (2001)
Ideal geometry (DNA, RNA) : Parkinson et al. (1996)
Validation Pipeline (wwPDB-VP) : 2.31.2

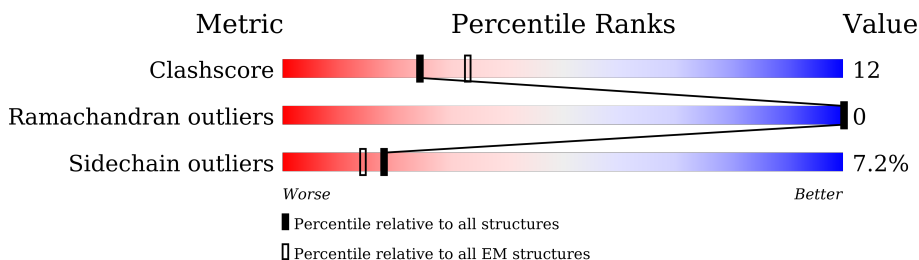
1 Overall quality at a glance

The following experimental techniques were used to determine the structure:

ELECTRON MICROSCOPY

The reported resolution of this entry is 3.80 Å.

Percentile scores (ranging between 0-100) for global validation metrics of the entry are shown in the following graphic. The table shows the number of entries on which the scores are based.



Metric	Whole archive (#Entries)	EM structures (#Entries)
Clashscore	158937	4297
Ramachandran outliers	154571	4023
Sidechain outliers	154315	3826

The table below summarises the geometric issues observed across the polymeric chains and their fit to the map. The red, orange, yellow and green segments of the bar indicate the fraction of residues that contain outliers for ≥ 3 , 2, 1 and 0 types of geometric quality criteria respectively. A grey segment represents the fraction of residues that are not modelled. The numeric value for each fraction is indicated below the corresponding segment, with a dot representing fractions $\leq 5\%$. The upper red bar (where present) indicates the fraction of residues that have poor fit to the EM map (all-atom inclusion $< 40\%$). The numeric value is given above the bar.

Mol	Chain	Length	Quality of chain
1	A	377	 65% 30% . .
1	B	377	 66% 29% . .
1	C	377	 69% 26% . .
1	D	377	 67% 28% . .
1	E	377	 5% 68% 28% . .

2 Entry composition [i](#)

There are 3 unique types of molecules in this entry. The entry contains 14530 atoms, of which 0 are hydrogens and 0 are deuteriums.

In the tables below, the AltConf column contains the number of residues with at least one atom in alternate conformation and the Trace column contains the number of residues modelled with at most 2 atoms.

- Molecule 1 is a protein called Actin, alpha skeletal muscle.

Mol	Chain	Residues	Atoms					AltConf	Trace
1	A	370	Total	C	N	O	S	0	0
			2875	1821	488	545	21		
1	B	370	Total	C	N	O	S	0	0
			2881	1824	488	548	21		
1	C	370	Total	C	N	O	S	0	0
			2878	1822	487	548	21		
1	D	370	Total	C	N	O	S	0	0
			2873	1820	487	545	21		
1	E	370	Total	C	N	O	S	0	0
			2883	1825	488	549	21		

- Molecule 2 is MAGNESIUM ION (three-letter code: MG) (formula: Mg) (labeled as "Ligand of Interest" by depositor).

Mol	Chain	Residues	Atoms		AltConf
2	A	1	Total	Mg	0
			1	1	
2	B	1	Total	Mg	0
			1	1	
2	C	1	Total	Mg	0
			1	1	
2	D	1	Total	Mg	0
			1	1	
2	E	1	Total	Mg	0
			1	1	

- Molecule 3 is ADENOSINE-5'-DIPHOSPHATE (three-letter code: ADP) (formula: C₁₀H₁₅N₅O₁₀P₂) (labeled as "Ligand of Interest" by depositor).

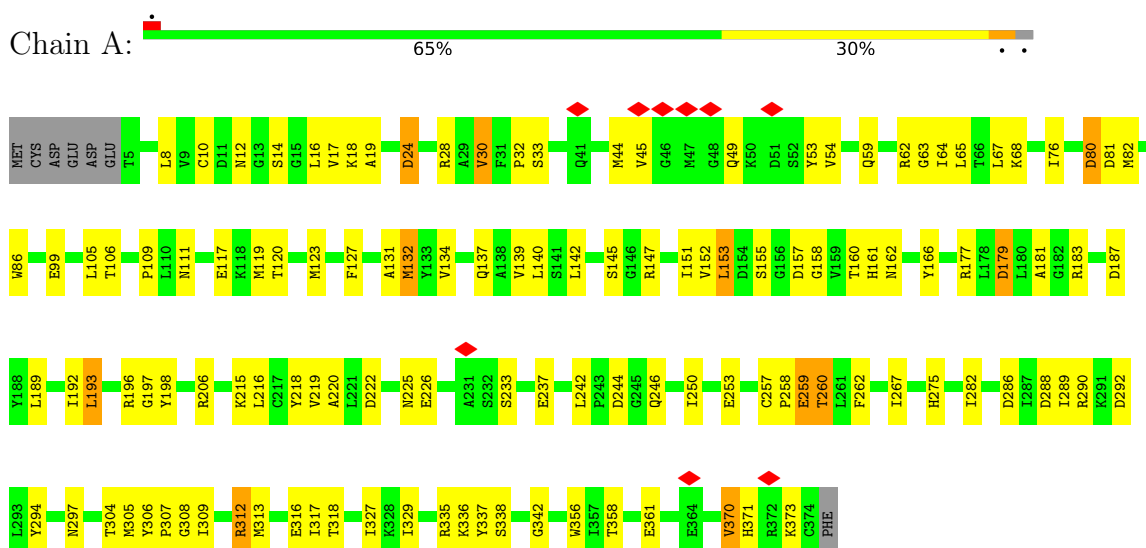


Mol	Chain	Residues	Atoms					AltConf
3	A	1	Total 27	C 10	N 5	O 10	P 2	0
3	B	1	Total 27	C 10	N 5	O 10	P 2	0
3	C	1	Total 27	C 10	N 5	O 10	P 2	0
3	D	1	Total 27	C 10	N 5	O 10	P 2	0
3	E	1	Total 27	C 10	N 5	O 10	P 2	0

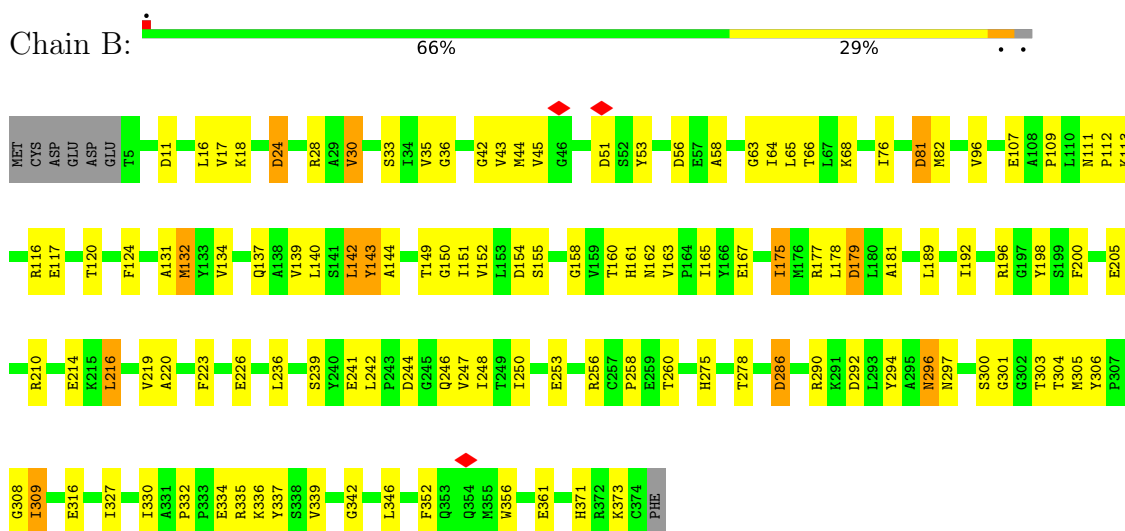
3 Residue-property plots

These plots are drawn for all protein, RNA, DNA and oligosaccharide chains in the entry. The first graphic for a chain summarises the proportions of the various outlier classes displayed in the second graphic. The second graphic shows the sequence view annotated by issues in geometry and atom inclusion in map density. Residues are color-coded according to the number of geometric quality criteria for which they contain at least one outlier: green = 0, yellow = 1, orange = 2 and red = 3 or more. A red diamond above a residue indicates a poor fit to the EM map for this residue (all-atom inclusion < 40%). Stretches of 2 or more consecutive residues without any outlier are shown as a green connector. Residues present in the sample, but not in the model, are shown in grey.

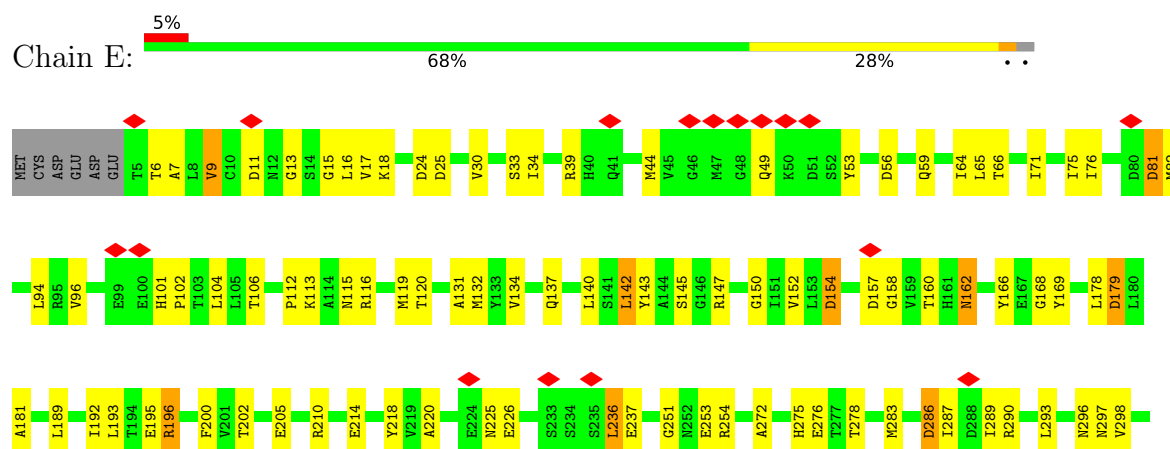
- Molecule 1: Actin, alpha skeletal muscle



- Molecule 1: Actin, alpha skeletal muscle



- Molecule 1: Actin, alpha skeletal muscle





4 Experimental information

Property	Value	Source
EM reconstruction method	HELICAL	Depositor
Imposed symmetry	HELICAL, twist=-166.6°, rise=27.5 Å, axial sym=C1	Depositor
Number of segments used	64194	Depositor
Resolution determination method	FSC 0.143 CUT-OFF	Depositor
CTF correction method	NONE; GCTF for CTF correction	Depositor
Microscope	FEI TITAN KRIOS	Depositor
Voltage (kV)	300	Depositor
Electron dose ($e^-/\text{\AA}^2$)	49.2	Depositor
Minimum defocus (nm)	Not provided	
Maximum defocus (nm)	Not provided	
Magnification	75000	Depositor
Image detector	FEI FALCON III (4k x 4k)	Depositor
Maximum map value	0.225	Depositor
Minimum map value	-0.101	Depositor
Average map value	0.000	Depositor
Map value standard deviation	0.008	Depositor
Recommended contour level	0.0477	Depositor
Map size (Å)	339.19998, 339.19998, 339.19998	wwPDB
Map dimensions	320, 320, 320	wwPDB
Map angles (°)	90.0, 90.0, 90.0	wwPDB
Pixel spacing (Å)	1.06, 1.06, 1.06	Depositor

5 Model quality [i](#)

5.1 Standard geometry [i](#)

Bond lengths and bond angles in the following residue types are not validated in this section: ADP, MG

The Z score for a bond length (or angle) is the number of standard deviations the observed value is removed from the expected value. A bond length (or angle) with $|Z| > 5$ is considered an outlier worth inspection. RMSZ is the root-mean-square of all Z scores of the bond lengths (or angles).

Mol	Chain	Bond lengths		Bond angles	
		RMSZ	# Z >5	RMSZ	# Z >5
1	A	0.30	0/2937	0.45	0/3980
1	B	0.30	0/2943	0.44	0/3988
1	C	0.30	0/2940	0.45	0/3985
1	D	0.29	0/2935	0.43	0/3978
1	E	0.28	0/2945	0.43	0/3990
All	All	0.29	0/14700	0.44	0/19921

There are no bond length outliers.

There are no bond angle outliers.

There are no chirality outliers.

There are no planarity outliers.

5.2 Too-close contacts [i](#)

In the following table, the Non-H and H(model) columns list the number of non-hydrogen atoms and hydrogen atoms in the chain respectively. The H(added) column lists the number of hydrogen atoms added and optimized by MolProbity. The Clashes column lists the number of clashes within the asymmetric unit, whereas Symm-Clashes lists symmetry-related clashes.

Mol	Chain	Non-H	H(model)	H(added)	Clashes	Symm-Clashes
1	A	2875	0	2844	80	0
1	B	2881	0	2853	78	0
1	C	2878	0	2844	65	0
1	D	2873	0	2837	73	0
1	E	2883	0	2852	70	0
2	A	1	0	0	0	0
2	B	1	0	0	0	0
2	C	1	0	0	0	0

Continued on next page...

Continued from previous page...

Mol	Chain	Non-H	H(model)	H(added)	Clashes	Symm-Clashes
2	D	1	0	0	0	0
2	E	1	0	0	0	0
3	A	27	0	12	1	0
3	B	27	0	12	1	0
3	C	27	0	12	2	0
3	D	27	0	12	2	0
3	E	27	0	12	1	0
All	All	14530	0	14290	341	0

The all-atom clashscore is defined as the number of clashes found per 1000 atoms (including hydrogen atoms). The all-atom clashscore for this structure is 12.

All (341) close contacts within the same asymmetric unit are listed below, sorted by their clash magnitude.

Atom-1	Atom-2	Interatomic distance (Å)	Clash overlap (Å)
1:B:219:VAL:HB	1:B:308:GLY:HA3	1.60	0.83
1:A:219:VAL:HB	1:A:308:GLY:HA3	1.61	0.81
1:B:179:ASP:N	1:B:179:ASP:OD1	2.14	0.80
1:A:179:ASP:OD1	1:A:179:ASP:N	2.14	0.78
1:C:158:GLY:H	1:C:181:ALA:HB3	1.46	0.77
1:B:241:GLU:HG2	1:B:247:VAL:HG12	1.70	0.74
1:A:153:LEU:HD12	1:A:162:ASN:HD21	1.58	0.69
1:E:81:ASP:OD1	1:E:81:ASP:N	2.22	0.69
1:A:145:SER:OG	1:A:147:ARG:NH1	2.27	0.68
1:C:62:ARG:HG2	1:C:67:LEU:HD11	1.76	0.68
1:C:42:GLY:HA2	1:E:169:TYR:HA	1.76	0.67
1:A:244:ASP:HB2	1:C:287:ILE:HG23	1.76	0.67
1:D:81:ASP:N	1:D:81:ASP:OD1	2.23	0.67
1:C:218:TYR:HA	1:C:307:PRO:HD2	1.77	0.66
1:D:71:ILE:HG12	1:D:76:ILE:HG12	1.78	0.66
1:C:179:ASP:OD1	1:C:179:ASP:N	2.27	0.65
1:C:35:VAL:HG21	1:C:81:ASP:HB2	1.80	0.64
1:C:81:ASP:OD1	1:C:81:ASP:N	2.29	0.64
1:C:196:ARG:NH1	1:C:253:GLU:OE2	2.30	0.64
1:A:158:GLY:H	1:A:181:ALA:HB3	1.63	0.63
1:D:56:ASP:N	1:D:56:ASP:OD1	2.31	0.63
1:D:162:ASN:OD1	1:D:162:ASN:N	2.32	0.63
1:B:210:ARG:NH1	1:B:214:GLU:OE2	2.31	0.63
1:A:68:LYS:NZ	1:A:81:ASP:OD2	2.30	0.62
1:A:80:ASP:OD1	1:A:80:ASP:N	2.32	0.62
1:C:45:VAL:HG21	1:E:352:PHE:HD2	1.64	0.62

Continued on next page...

Continued from previous page...

Atom-1	Atom-2	Interatomic distance (Å)	Clash overlap (Å)
1:C:17:VAL:HG23	1:C:33:SER:HB3	1.82	0.61
1:D:17:VAL:HG23	1:D:33:SER:HB3	1.82	0.61
1:E:17:VAL:HG23	1:E:33:SER:HB3	1.83	0.61
1:E:210:ARG:NH1	1:E:214:GLU:OE2	2.34	0.61
1:D:218:TYR:HA	1:D:307:PRO:HD2	1.83	0.60
1:A:216:LEU:HD13	1:A:250:ILE:HD11	1.84	0.60
1:E:11:ASP:OD1	1:E:137:GLN:NE2	2.34	0.60
1:C:157:ASP:HB2	3:C:402:ADP:H4'	1.84	0.59
1:D:131:ALA:HB1	1:D:356:TRP:HB3	1.84	0.59
1:A:30:VAL:HG11	1:A:337:TYR:HE2	1.68	0.58
1:D:220:ALA:HB1	1:D:226:GLU:HG3	1.86	0.58
1:C:300:SER:OG	1:C:301:GLY:N	2.36	0.58
1:E:237:GLU:OE1	1:E:237:GLU:N	2.35	0.58
1:D:210:ARG:NH1	1:D:214:GLU:OE2	2.36	0.58
1:B:24:ASP:N	1:B:24:ASP:OD1	2.36	0.58
1:E:158:GLY:H	1:E:181:ALA:HB3	1.68	0.58
1:B:42:GLY:HA2	1:D:169:TYR:HA	1.86	0.58
1:B:196:ARG:NH1	1:B:253:GLU:OE2	2.37	0.58
1:E:220:ALA:HB1	1:E:226:GLU:HG3	1.84	0.57
1:E:75:ILE:HA	1:E:115:ASN:HD21	1.69	0.57
1:B:158:GLY:H	1:B:181:ALA:HB3	1.68	0.57
1:A:14:SER:OG	1:A:183:ARG:NH2	2.38	0.57
1:B:162:ASN:ND2	1:B:278:THR:OG1	2.36	0.57
1:E:162:ASN:ND2	1:E:278:THR:OG1	2.38	0.57
1:E:286:ASP:OD1	1:E:286:ASP:N	2.37	0.57
1:C:304:THR:O	1:C:335:ARG:NE	2.34	0.57
1:D:142:LEU:HD23	1:D:165:ILE:HD12	1.87	0.57
1:D:195:GLU:HG3	1:E:113:LYS:HE2	1.87	0.57
1:B:63:GLY:HA3	1:D:289:ILE:HG13	1.86	0.56
1:A:105:LEU:HD11	1:A:123:MET:HG3	1.87	0.56
1:A:304:THR:O	1:A:335:ARG:NE	2.37	0.56
1:E:7:ALA:HA	1:E:102:PRO:HD2	1.87	0.56
1:A:45:VAL:HG11	1:C:352:PHE:HB2	1.87	0.56
1:A:237:GLU:N	1:A:237:GLU:OE1	2.37	0.56
1:A:244:ASP:OD2	1:A:246:GLN:NE2	2.39	0.56
1:C:30:VAL:HG11	1:C:337:TYR:HE1	1.70	0.56
1:E:71:ILE:HG12	1:E:76:ILE:HG12	1.86	0.56
1:E:304:THR:O	1:E:335:ARG:NE	2.39	0.56
1:A:305:MET:SD	1:A:336:LYS:HB2	2.46	0.56
1:C:24:ASP:OD1	1:C:24:ASP:N	2.39	0.56
1:A:120:THR:HG21	1:A:370:VAL:HG21	1.86	0.56

Continued on next page...

Continued from previous page...

Atom-1	Atom-2	Interatomic distance (Å)	Clash overlap (Å)
1:C:162:ASN:OD1	1:C:162:ASN:N	2.38	0.56
1:B:120:THR:HG23	1:B:132:MET:HE1	1.88	0.55
1:D:180:LEU:HD12	1:D:267:ILE:HD11	1.86	0.55
1:A:219:VAL:HG22	1:A:258:PRO:HB2	1.88	0.55
1:D:242:LEU:HD12	1:D:246:GLN:HG3	1.88	0.55
1:C:36:GLY:HA3	1:C:65:LEU:HD23	1.88	0.55
1:C:189:LEU:HD13	1:C:257:CYS:HB2	1.88	0.55
1:B:330:ILE:HG22	1:B:332:PRO:HD3	1.88	0.55
1:D:157:ASP:HB2	3:D:402:ADP:H4'	1.88	0.55
1:E:145:SER:OG	1:E:147:ARG:NH1	2.40	0.55
1:C:44:MET:HG3	1:E:168:GLY:HA2	1.89	0.55
1:D:317:ILE:HG22	1:D:327:ILE:HD13	1.89	0.55
1:A:259:GLU:OE2	1:A:312:ARG:NH1	2.36	0.55
1:D:189:LEU:HD13	1:D:257:CYS:HB2	1.88	0.55
1:D:106:THR:HB	1:D:137:GLN:HG2	1.89	0.55
1:B:117:GLU:OE2	1:B:371:HIS:NE2	2.40	0.54
1:C:260:THR:HG21	1:C:267:ILE:HD11	1.88	0.54
1:B:275:HIS:HD2	1:B:316:GLU:HB3	1.72	0.54
1:E:131:ALA:HB1	1:E:356:TRP:HB3	1.89	0.54
1:B:149:THR:O	1:B:296:ASN:ND2	2.40	0.54
1:E:16:LEU:O	1:E:18:LYS:NZ	2.41	0.54
1:A:24:ASP:OD1	1:A:24:ASP:N	2.40	0.54
1:B:219:VAL:HG22	1:B:258:PRO:HB2	1.90	0.54
1:A:131:ALA:HB1	1:A:356:TRP:HB3	1.88	0.54
1:B:275:HIS:CD2	1:B:316:GLU:HB3	2.43	0.54
1:A:166:TYR:HD1	1:A:289:ILE:HG23	1.73	0.54
1:B:286:ASP:OD1	1:B:286:ASP:N	2.39	0.54
1:B:305:MET:SD	1:B:336:LYS:HB2	2.48	0.53
1:D:286:ASP:N	1:D:286:ASP:OD1	2.40	0.53
1:C:45:VAL:N	1:E:143:TYR:OH	2.41	0.53
1:B:17:VAL:HG23	1:B:33:SER:HB3	1.91	0.53
1:D:47:MET:HB2	1:D:49:GLN:HE21	1.73	0.53
1:C:131:ALA:HB1	1:C:356:TRP:HB3	1.90	0.53
1:C:360:GLN:NE2	1:C:364:GLU:OE1	2.40	0.53
1:E:196:ARG:NH1	1:E:253:GLU:OE2	2.41	0.53
1:C:142:LEU:HD23	1:C:165:ILE:HD12	1.91	0.52
1:E:179:ASP:N	1:E:179:ASP:OD1	2.41	0.52
1:A:151:ILE:HD12	1:A:282:ILE:HG13	1.91	0.52
1:E:200:PHE:HB3	1:E:205:GLU:HB3	1.91	0.52
1:A:220:ALA:HB1	1:A:226:GLU:HG3	1.91	0.52
1:A:318:THR:HG22	1:A:327:ILE:HD13	1.91	0.52

Continued on next page...

Continued from previous page...

Atom-1	Atom-2	Interatomic distance (Å)	Clash overlap (Å)
1:B:64:ILE:HD11	1:D:166:TYR:HB3	1.91	0.52
1:E:283:MET:SD	1:E:290:ARG:NH1	2.82	0.52
1:A:17:VAL:HG23	1:A:33:SER:HB3	1.91	0.52
1:B:242:LEU:HD12	1:B:246:GLN:HG3	1.92	0.51
1:C:138:ALA:HB1	1:C:152:VAL:HG21	1.92	0.51
1:D:145:SER:OG	1:D:147:ARG:NH1	2.44	0.51
1:D:300:SER:O	1:D:304:THR:OG1	2.25	0.51
1:A:64:ILE:HD11	1:C:166:TYR:HB3	1.92	0.51
1:B:45:VAL:N	1:D:143:TYR:OH	2.34	0.51
1:B:45:VAL:HG21	1:D:352:PHE:HD2	1.75	0.51
1:E:76:ILE:HD13	1:E:82:MET:HG2	1.93	0.51
1:B:111:ASN:OD1	1:B:177:ARG:NH1	2.44	0.51
1:E:6:THR:O	1:E:101:HIS:ND1	2.31	0.51
1:A:157:ASP:HB2	3:A:402:ADP:H4'	1.92	0.50
1:A:242:LEU:HD12	1:A:246:GLN:HG3	1.94	0.50
1:B:131:ALA:HB1	1:B:356:TRP:HB3	1.92	0.50
1:D:78:ASN:ND2	1:D:81:ASP:OD2	2.44	0.50
1:C:9:VAL:O	1:C:340:TRP:NE1	2.37	0.50
1:D:116:ARG:HD3	1:D:134:VAL:HG21	1.93	0.50
1:A:189:LEU:HA	1:A:192:ILE:HG22	1.92	0.50
1:A:309:ILE:O	1:A:313:MET:N	2.30	0.50
1:E:218:TYR:HA	1:E:307:PRO:HD2	1.92	0.50
1:C:286:ASP:OD1	1:C:286:ASP:N	2.44	0.50
1:D:312:ARG:O	1:D:316:GLU:HG2	2.10	0.50
1:B:306:TYR:HB2	1:B:309:ILE:HG22	1.94	0.50
1:B:36:GLY:HA3	1:B:65:LEU:HD23	1.94	0.50
1:C:143:TYR:CE2	1:C:346:LEU:HD12	2.47	0.50
1:A:142:LEU:HD13	1:A:152:VAL:HG22	1.94	0.50
1:B:53:TYR:HB2	1:B:58:ALA:HB2	1.94	0.49
1:A:286:ASP:O	1:A:290:ARG:HG3	2.12	0.49
1:A:233:SER:OG	1:A:237:GLU:OE2	2.26	0.49
1:B:30:VAL:HG11	1:B:337:TYR:HE1	1.76	0.49
1:E:162:ASN:N	1:E:162:ASN:OD1	2.45	0.49
1:B:107:GLU:OE1	1:B:116:ARG:NE	2.42	0.49
1:B:154:ASP:OD1	1:B:155:SER:N	2.40	0.49
1:B:220:ALA:HB1	1:B:226:GLU:HG3	1.94	0.49
1:B:139:VAL:HG22	1:B:165:ILE:HD11	1.94	0.49
1:A:262:PHE:HZ	1:A:309:ILE:HG13	1.77	0.49
1:E:166:TYR:HD1	1:E:289:ILE:HG23	1.78	0.49
1:D:86:TRP:HH2	1:D:119:MET:HG3	1.77	0.49
1:A:63:GLY:HA3	1:C:289:ILE:HG13	1.95	0.49

Continued on next page...

Continued from previous page...

Atom-1	Atom-2	Interatomic distance (Å)	Clash overlap (Å)
1:D:160:THR:O	1:D:178:LEU:N	2.37	0.48
1:A:155:SER:HB3	1:A:160:THR:HG23	1.94	0.48
1:E:53:TYR:HB2	1:E:65:LEU:HD21	1.94	0.48
1:D:300:SER:OG	1:D:301:GLY:N	2.46	0.48
1:A:189:LEU:HD13	1:A:257:CYS:HB2	1.95	0.48
1:D:286:ASP:O	1:D:290:ARG:HG3	2.14	0.48
1:B:361:GLU:OE1	1:B:373:LYS:NZ	2.45	0.48
1:C:286:ASP:O	1:C:290:ARG:HG3	2.13	0.48
1:B:137:GLN:HG2	1:B:339:VAL:HG11	1.96	0.48
1:E:305:MET:SD	1:E:336:LYS:HB2	2.54	0.48
1:B:155:SER:HB3	1:B:303:THR:HB	1.96	0.48
1:D:361:GLU:OE2	1:D:373:LYS:NZ	2.46	0.48
1:E:286:ASP:O	1:E:290:ARG:HG3	2.14	0.48
1:B:286:ASP:O	1:B:290:ARG:HG3	2.13	0.48
1:C:140:LEU:O	1:C:342:GLY:HA3	2.14	0.48
1:E:142:LEU:HD13	1:E:152:VAL:HG22	1.96	0.47
1:E:34:ILE:HD11	1:E:59:GLN:HB2	1.95	0.47
1:B:304:THR:O	1:B:335:ARG:NE	2.33	0.47
1:C:220:ALA:HB1	1:C:226:GLU:HG3	1.96	0.47
1:C:305:MET:SD	1:C:336:LYS:HB2	2.54	0.47
1:A:76:ILE:HD13	1:A:82:MET:HG2	1.95	0.47
1:B:51:ASP:OD1	1:B:51:ASP:N	2.37	0.47
1:D:9:VAL:O	1:D:340:TRP:NE1	2.40	0.47
1:A:275:HIS:CD2	1:A:316:GLU:HB3	2.50	0.47
1:E:160:THR:O	1:E:178:LEU:N	2.47	0.47
1:A:140:LEU:O	1:A:342:GLY:HA3	2.15	0.47
1:D:189:LEU:HA	1:D:192:ILE:HG22	1.96	0.47
1:B:45:VAL:HG11	1:D:352:PHE:HB2	1.97	0.47
1:D:14:SER:N	3:D:402:ADP:O3B	2.46	0.47
1:E:236:LEU:HD13	1:E:254:ARG:HH11	1.80	0.47
1:B:142:LEU:HD13	1:B:152:VAL:HG22	1.96	0.47
1:C:219:VAL:HG22	1:C:258:PRO:HB2	1.96	0.47
1:E:140:LEU:O	1:E:342:GLY:HA3	2.15	0.47
1:A:153:LEU:HD12	1:A:162:ASN:ND2	2.27	0.46
1:C:63:GLY:HA3	1:E:289:ILE:HG13	1.97	0.46
1:E:317:ILE:HG22	1:E:327:ILE:HD13	1.96	0.46
1:A:44:MET:HB2	1:A:49:GLN:HE22	1.80	0.46
1:B:150:GLY:HA2	1:B:296:ASN:HD22	1.79	0.46
1:C:64:ILE:HG21	1:E:169:TYR:CD2	2.50	0.46
1:A:197:GLY:HA2	1:B:112:PRO:HG3	1.97	0.46
1:D:196:ARG:NH1	1:D:253:GLU:OE2	2.44	0.46

Continued on next page...

Continued from previous page...

Atom-1	Atom-2	Interatomic distance (Å)	Clash overlap (Å)
1:D:305:MET:SD	1:D:336:LYS:HB2	2.56	0.46
1:E:24:ASP:OD1	1:E:25:ASP:N	2.49	0.46
1:B:223:PHE:HE1	1:B:256:ARG:HG2	1.80	0.46
1:D:140:LEU:O	1:D:342:GLY:HA3	2.16	0.46
1:E:293:LEU:HD23	1:E:293:LEU:HA	1.74	0.46
1:A:117:GLU:OE2	1:A:371:HIS:NE2	2.43	0.46
1:C:200:PHE:HB3	1:C:205:GLU:HB3	1.98	0.46
1:D:237:GLU:HA	1:D:251:GLY:HA2	1.98	0.46
1:C:312:ARG:O	1:C:316:GLU:HG2	2.16	0.46
1:A:262:PHE:CE2	1:A:312:ARG:HD2	2.51	0.46
1:E:298:VAL:HG22	1:E:330:ILE:HB	1.98	0.46
1:A:111:ASN:OD1	1:A:177:ARG:NH1	2.49	0.45
1:B:76:ILE:HD13	1:B:82:MET:HG2	1.97	0.45
1:D:76:ILE:HD13	1:D:82:MET:HG2	1.97	0.45
1:D:272:ALA:HB1	1:D:276:GLU:HB3	1.97	0.45
1:A:18:LYS:HG2	1:A:30:VAL:HG12	1.98	0.45
1:A:260:THR:HG21	1:A:267:ILE:HD11	1.99	0.45
1:B:216:LEU:HD13	1:B:250:ILE:HD11	1.98	0.45
1:C:30:VAL:HG11	1:C:337:TYR:CE1	2.51	0.45
1:C:7:ALA:HA	1:C:102:PRO:HD2	1.99	0.45
1:A:187:ASP:OD2	1:A:206:ARG:NH2	2.49	0.45
1:B:306:TYR:CE1	3:B:402:ADP:H2	2.34	0.45
1:C:158:GLY:H	1:C:181:ALA:CB	2.21	0.45
1:B:64:ILE:HG21	1:D:169:TYR:CD2	2.51	0.45
1:B:113:LYS:HD2	1:B:371:HIS:CE1	2.51	0.45
1:E:160:THR:N	1:E:178:LEU:O	2.49	0.45
1:B:142:LEU:HD12	1:B:142:LEU:HA	1.76	0.45
1:B:334:GLU:N	1:B:334:GLU:OE1	2.50	0.45
1:A:32:PRO:HG3	1:A:59:GLN:HE21	1.82	0.45
1:B:163:VAL:HG22	1:B:175:ILE:HG22	1.99	0.45
1:C:56:ASP:OD1	1:C:56:ASP:N	2.49	0.45
1:C:189:LEU:HA	1:C:192:ILE:HG22	1.99	0.45
1:D:160:THR:HB	1:D:178:LEU:HB3	1.98	0.45
1:A:12:ASN:ND2	1:A:86:TRP:HE1	2.15	0.44
1:D:283:MET:SD	1:D:290:ARG:NH1	2.90	0.44
1:E:160:THR:HB	1:E:178:LEU:HB3	1.99	0.44
1:A:294:TYR:O	1:A:327:ILE:HA	2.16	0.44
1:C:295:ALA:O	1:C:328:LYS:HB2	2.18	0.44
1:D:197:GLY:HA2	1:E:112:PRO:HG3	1.99	0.44
1:E:158:GLY:CA	1:E:181:ALA:HB3	2.48	0.44
1:A:106:THR:HB	1:A:137:GLN:HG2	2.00	0.44

Continued on next page...

Continued from previous page...

Atom-1	Atom-2	Interatomic distance (Å)	Clash overlap (Å)
1:A:132:MET:HE3	1:A:132:MET:HB3	1.86	0.44
1:B:56:ASP:N	1:B:56:ASP:OD1	2.51	0.44
1:D:70:PRO:HG3	1:D:85:ILE:HD12	1.98	0.44
1:C:76:ILE:HD13	1:C:82:MET:HG2	2.00	0.43
1:D:7:ALA:HA	1:D:102:PRO:HD2	2.00	0.43
1:A:10:CYS:HA	1:A:19:ALA:HA	2.00	0.43
1:A:86:TRP:HH2	1:A:119:MET:HG3	1.82	0.43
1:C:106:THR:HB	1:C:137:GLN:HG2	2.00	0.43
1:E:106:THR:HB	1:E:137:GLN:HG2	1.99	0.43
1:A:53:TYR:HD2	1:A:65:LEU:HD21	1.83	0.43
1:C:21:PHE:HZ	1:C:96:VAL:HG11	1.81	0.43
1:C:216:LEU:HD12	1:C:250:ILE:HD11	2.00	0.43
1:C:348:SER:O	1:C:348:SER:OG	2.29	0.43
1:E:158:GLY:N	1:E:181:ALA:HB3	2.31	0.43
1:A:306:TYR:C	1:A:308:GLY:H	2.21	0.43
1:B:11:ASP:OD2	1:B:18:LYS:NZ	2.50	0.43
1:C:53:TYR:CD1	1:C:65:LEU:HD21	2.53	0.43
1:E:56:ASP:OD1	1:E:56:ASP:N	2.49	0.43
1:B:35:VAL:HG21	1:B:81:ASP:HB2	2.00	0.43
1:D:62:ARG:HG2	1:D:67:LEU:HD11	2.00	0.43
1:A:81:ASP:OD1	1:A:81:ASP:N	2.42	0.43
1:B:294:TYR:O	1:B:327:ILE:HA	2.19	0.43
1:C:91:TYR:HE1	1:C:98:PRO:HD3	1.83	0.43
1:D:32:PRO:HG3	1:D:59:GLN:HE21	1.84	0.43
1:E:13:GLY:HA3	3:E:402:ADP:O2B	2.18	0.43
1:E:15:GLY:HA3	1:E:157:ASP:OD2	2.18	0.43
1:E:189:LEU:HA	1:E:192:ILE:HG22	1.99	0.43
1:B:346:LEU:HD21	1:B:352:PHE:CE1	2.53	0.43
1:B:189:LEU:HA	1:B:192:ILE:HG12	2.01	0.43
1:C:161:HIS:O	1:C:161:HIS:ND1	2.52	0.43
1:B:140:LEU:O	1:B:342:GLY:HA3	2.18	0.42
1:B:151:ILE:HD13	1:B:278:THR:HG23	2.00	0.42
1:D:171:LEU:HD12	1:D:285:CYS:SG	2.59	0.42
1:E:275:HIS:CD2	1:E:316:GLU:HB3	2.54	0.42
1:E:9:VAL:HG22	1:E:340:TRP:CD1	2.54	0.42
1:E:44:MET:HB2	1:E:49:GLN:HE21	1.83	0.42
1:B:81:ASP:OD1	1:B:81:ASP:N	2.32	0.42
1:C:273:GLY:O	1:C:277:THR:HG23	2.19	0.42
1:D:162:ASN:HD22	1:D:278:THR:HA	1.84	0.42
1:A:222:ASP:HB3	1:A:225:ASN:HB2	2.00	0.42
1:A:335:ARG:HA	1:A:338:SER:HB3	2.00	0.42

Continued on next page...

Continued from previous page...

Atom-1	Atom-2	Interatomic distance (Å)	Clash overlap (Å)
1:D:193:LEU:HD12	1:D:193:LEU:HA	1.72	0.42
1:A:196:ARG:HD2	1:A:253:GLU:OE2	2.19	0.42
1:E:147:ARG:NH1	1:E:330:ILE:HG21	2.34	0.42
1:E:237:GLU:HA	1:E:251:GLY:HA2	2.01	0.42
1:A:86:TRP:CH2	1:A:119:MET:HG3	2.54	0.42
1:A:196:ARG:HD3	1:A:198:TYR:HE2	1.85	0.42
1:A:86:TRP:HB3	1:A:127:PHE:CE2	2.54	0.42
1:C:18:LYS:NZ	3:C:402:ADP:O2B	2.51	0.42
1:D:6:THR:O	1:D:101:HIS:ND1	2.52	0.42
1:A:109:PRO:HD2	1:A:161:HIS:CD2	2.55	0.42
1:B:53:TYR:CD1	1:B:65:LEU:HD21	2.55	0.42
1:B:198:TYR:CE1	1:B:248:ILE:HG22	2.55	0.42
1:D:147:ARG:NH1	1:D:330:ILE:HG21	2.35	0.42
1:D:351:THR:O	1:D:354:GLN:NE2	2.53	0.42
1:D:354:GLN:H	1:D:354:GLN:HG3	1.72	0.42
1:E:142:LEU:HD12	1:E:142:LEU:HA	1.82	0.42
1:E:115:ASN:O	1:E:119:MET:HB2	2.19	0.41
1:A:142:LEU:HD12	1:A:142:LEU:HA	1.70	0.41
1:B:297:ASN:N	1:B:297:ASN:OD1	2.53	0.41
1:A:62:ARG:HG3	1:A:67:LEU:HD11	2.02	0.41
1:A:63:GLY:N	1:C:288:ASP:OD2	2.54	0.41
1:A:86:TRP:HB3	1:A:127:PHE:HE2	1.86	0.41
1:B:44:MET:HG3	1:D:168:GLY:HA2	2.02	0.41
1:B:144:ALA:HB2	1:B:342:GLY:N	2.36	0.41
1:D:8:LEU:HD23	1:D:8:LEU:HA	1.89	0.41
1:D:50:LYS:HE3	1:D:50:LYS:HB3	1.97	0.41
1:A:12:ASN:CG	1:A:86:TRP:HE1	2.23	0.41
1:A:215:LYS:HE2	1:A:215:LYS:HB3	1.92	0.41
1:A:317:ILE:HG22	1:A:327:ILE:HG12	2.03	0.41
1:B:143:TYR:CE2	1:B:346:LEU:HD12	2.55	0.41
1:D:53:TYR:CD1	1:D:65:LEU:HD21	2.55	0.41
1:D:104:LEU:HD12	1:D:133:TYR:O	2.20	0.41
1:D:138:ALA:HB1	1:D:152:VAL:HG21	2.01	0.41
1:B:216:LEU:HA	1:B:216:LEU:HD23	1.85	0.41
1:B:236:LEU:HD13	1:B:236:LEU:HA	1.87	0.41
1:C:43:VAL:O	1:C:44:MET:HG2	2.20	0.41
1:E:39:ARG:HG2	1:E:64:ILE:O	2.21	0.41
1:C:34:ILE:HD12	1:C:67:LEU:HD22	2.02	0.41
1:D:293:LEU:HD23	1:D:293:LEU:HA	1.84	0.41
1:A:12:ASN:OD1	1:A:86:TRP:NE1	2.53	0.41
1:A:361:GLU:OE1	1:A:373:LYS:NZ	2.53	0.41

Continued on next page...

Continued from previous page...

Atom-1	Atom-2	Interatomic distance (Å)	Clash overlap (Å)
1:B:43:VAL:O	1:B:44:MET:HG2	2.20	0.41
1:C:135:ALA:HB3	1:C:140:LEU:HD21	2.03	0.41
1:D:291:LYS:HG3	1:D:325:MET:SD	2.61	0.41
1:E:116:ARG:O	1:E:120:THR:HG23	2.20	0.41
1:E:150:GLY:HA2	1:E:296:ASN:HB2	2.02	0.41
1:E:154:ASP:O	1:E:160:THR:HA	2.21	0.41
1:B:109:PRO:HD2	1:B:161:HIS:CE1	2.56	0.41
1:C:147:ARG:NH1	1:C:330:ILE:HG21	2.36	0.41
1:D:110:LEU:HG	1:D:175:ILE:HD11	2.03	0.41
1:D:273:GLY:O	1:D:277:THR:HG23	2.20	0.41
1:D:294:TYR:CD2	1:D:325:MET:HG2	2.56	0.41
1:B:200:PHE:HB3	1:B:205:GLU:HB3	2.02	0.40
1:E:94:LEU:HB3	1:E:96:VAL:HG13	2.01	0.40
1:A:297:ASN:HB2	1:A:329:ILE:HD13	2.02	0.40
1:C:171:LEU:HD12	1:C:285:CYS:SG	2.61	0.40
1:D:331:ALA:HB1	1:D:335:ARG:NH1	2.35	0.40
1:B:66:THR:HG23	1:C:270:GLU:OE2	2.22	0.40
1:E:297:ASN:HB2	1:E:329:ILE:HG12	2.04	0.40
1:B:244:ASP:HB3	1:D:287:ILE:HG23	2.04	0.40
1:D:190:MET:HB3	1:D:209:VAL:HG11	2.03	0.40
1:E:272:ALA:HB1	1:E:276:GLU:HB3	2.03	0.40
1:E:361:GLU:HA	1:E:364:GLU:HG2	2.04	0.40
1:A:193:LEU:HA	1:A:193:LEU:HD12	1.74	0.40
1:A:218:TYR:HA	1:A:307:PRO:HD2	2.02	0.40
1:B:160:THR:N	1:B:178:LEU:O	2.53	0.40
1:B:239:SER:HA	1:B:248:ILE:O	2.21	0.40
1:B:300:SER:OG	1:B:301:GLY:N	2.54	0.40
1:C:244:ASP:HB2	1:E:287:ILE:HG23	2.04	0.40

There are no symmetry-related clashes.

5.3 Torsion angles [i](#)

5.3.1 Protein backbone [i](#)

In the following table, the Percentiles column shows the percent Ramachandran outliers of the chain as a percentile score with respect to all PDB entries followed by that with respect to all EM entries.

The Analysed column shows the number of residues for which the backbone conformation was analysed, and the total number of residues.

Mol	Chain	Analysed	Favoured	Allowed	Outliers	Percentiles	
1	A	368/377 (98%)	335 (91%)	33 (9%)	0	100	100
1	B	368/377 (98%)	340 (92%)	28 (8%)	0	100	100
1	C	368/377 (98%)	341 (93%)	27 (7%)	0	100	100
1	D	368/377 (98%)	337 (92%)	31 (8%)	0	100	100
1	E	368/377 (98%)	346 (94%)	22 (6%)	0	100	100
All	All	1840/1885 (98%)	1699 (92%)	141 (8%)	0	100	100

There are no Ramachandran outliers to report.

5.3.2 Protein sidechains ⓘ

In the following table, the Percentiles column shows the percent sidechain outliers of the chain as a percentile score with respect to all PDB entries followed by that with respect to all EM entries.

The Analysed column shows the number of residues for which the sidechain conformation was analysed, and the total number of residues.

Mol	Chain	Analysed	Rotameric	Outliers	Percentiles	
1	A	309/320 (97%)	288 (93%)	21 (7%)	16	47
1	B	311/320 (97%)	290 (93%)	21 (7%)	16	47
1	C	310/320 (97%)	285 (92%)	25 (8%)	11	41
1	D	308/320 (96%)	287 (93%)	21 (7%)	16	47
1	E	311/320 (97%)	288 (93%)	23 (7%)	13	44
All	All	1549/1600 (97%)	1438 (93%)	111 (7%)	18	45

All (111) residues with a non-rotameric sidechain are listed below:

Mol	Chain	Res	Type
1	A	8	LEU
1	A	16	LEU
1	A	24	ASP
1	A	28	ARG
1	A	30	VAL
1	A	54	VAL
1	A	80	ASP
1	A	99	GLU
1	A	132	MET
1	A	134	VAL

Continued on next page...

Continued from previous page...

Mol	Chain	Res	Type
1	A	139	VAL
1	A	153	LEU
1	A	179	ASP
1	A	193	LEU
1	A	259	GLU
1	A	260	THR
1	A	288	ASP
1	A	292	ASP
1	A	312	ARG
1	A	358	THR
1	A	370	VAL
1	B	16	LEU
1	B	24	ASP
1	B	28	ARG
1	B	30	VAL
1	B	68	LYS
1	B	81	ASP
1	B	96	VAL
1	B	124	PHE
1	B	132	MET
1	B	134	VAL
1	B	142	LEU
1	B	143	TYR
1	B	167	GLU
1	B	175	ILE
1	B	179	ASP
1	B	216	LEU
1	B	260	THR
1	B	286	ASP
1	B	292	ASP
1	B	296	ASN
1	B	309	ILE
1	C	10	CYS
1	C	16	LEU
1	C	24	ASP
1	C	43	VAL
1	C	57	GLU
1	C	72	GLU
1	C	81	ASP
1	C	107	GLU
1	C	116	ARG
1	C	132	MET

Continued on next page...

Continued from previous page...

Mol	Chain	Res	Type
1	C	134	VAL
1	C	140	LEU
1	C	142	LEU
1	C	152	VAL
1	C	162	ASN
1	C	179	ASP
1	C	201	VAL
1	C	218	TYR
1	C	224	GLU
1	C	237	GLU
1	C	244	ASP
1	C	286	ASP
1	C	303	THR
1	C	320	LEU
1	C	351	THR
1	D	43	VAL
1	D	49	GLN
1	D	50	LYS
1	D	56	ASP
1	D	57	GLU
1	D	81	ASP
1	D	116	ARG
1	D	142	LEU
1	D	162	ASN
1	D	180	LEU
1	D	193	LEU
1	D	211	ASP
1	D	218	TYR
1	D	236	LEU
1	D	286	ASP
1	D	296	ASN
1	D	320	LEU
1	D	351	THR
1	D	353	GLN
1	D	354	GLN
1	D	358	THR
1	E	9	VAL
1	E	30	VAL
1	E	66	THR
1	E	81	ASP
1	E	104	LEU
1	E	132	MET

Continued on next page...

Continued from previous page...

Mol	Chain	Res	Type
1	E	134	VAL
1	E	142	LEU
1	E	154	ASP
1	E	162	ASN
1	E	179	ASP
1	E	193	LEU
1	E	195	GLU
1	E	196	ARG
1	E	202	THR
1	E	225	ASN
1	E	236	LEU
1	E	286	ASP
1	E	303	THR
1	E	312	ARG
1	E	320	LEU
1	E	346	LEU
1	E	370	VAL

Sometimes sidechains can be flipped to improve hydrogen bonding and reduce clashes. All (22) such sidechains are listed below:

Mol	Chain	Res	Type
1	A	12	ASN
1	A	78	ASN
1	A	162	ASN
1	A	173	HIS
1	A	275	HIS
1	A	353	GLN
1	A	360	GLN
1	B	78	ASN
1	B	162	ASN
1	B	173	HIS
1	B	296	ASN
1	C	78	ASN
1	C	111	ASN
1	C	246	GLN
1	D	41	GLN
1	D	49	GLN
1	D	246	GLN
1	D	353	GLN
1	E	49	GLN
1	E	115	ASN
1	E	162	ASN

Continued on next page...

Continued from previous page...

Mol	Chain	Res	Type
1	E	275	HIS

5.3.3 RNA [i](#)

There are no RNA molecules in this entry.

5.4 Non-standard residues in protein, DNA, RNA chains [i](#)

There are no non-standard protein/DNA/RNA residues in this entry.

5.5 Carbohydrates [i](#)

There are no monosaccharides in this entry.

5.6 Ligand geometry [i](#)

Of 10 ligands modelled in this entry, 5 are monoatomic - leaving 5 for Mogul analysis.

In the following table, the Counts columns list the number of bonds (or angles) for which Mogul statistics could be retrieved, the number of bonds (or angles) that are observed in the model and the number of bonds (or angles) that are defined in the Chemical Component Dictionary. The Link column lists molecule types, if any, to which the group is linked. The Z score for a bond length (or angle) is the number of standard deviations the observed value is removed from the expected value. A bond length (or angle) with $|Z| > 2$ is considered an outlier worth inspection. RMSZ is the root-mean-square of all Z scores of the bond lengths (or angles).

Mol	Type	Chain	Res	Link	Bond lengths			Bond angles		
					Counts	RMSZ	$\# Z > 2$	Counts	RMSZ	$\# Z > 2$
3	ADP	B	402	-	24,29,29	0.94	1 (4%)	29,45,45	1.43	4 (13%)
3	ADP	D	402	2	24,29,29	0.94	1 (4%)	29,45,45	1.42	4 (13%)
3	ADP	A	402	2	24,29,29	0.94	1 (4%)	29,45,45	1.44	4 (13%)
3	ADP	C	402	2	24,29,29	0.92	1 (4%)	29,45,45	1.45	4 (13%)
3	ADP	E	402	2	24,29,29	0.94	1 (4%)	29,45,45	1.46	4 (13%)

In the following table, the Chirals column lists the number of chiral outliers, the number of chiral centers analysed, the number of these observed in the model and the number defined in the Chemical Component Dictionary. Similar counts are reported in the Torsion and Rings columns. '-' means no outliers of that kind were identified.

Mol	Type	Chain	Res	Link	Chirals	Torsions	Rings
3	ADP	B	402	-	-	4/12/32/32	0/3/3/3
3	ADP	D	402	2	-	0/12/32/32	0/3/3/3
3	ADP	A	402	2	-	0/12/32/32	0/3/3/3
3	ADP	C	402	2	-	0/12/32/32	0/3/3/3
3	ADP	E	402	2	-	3/12/32/32	0/3/3/3

All (5) bond length outliers are listed below:

Mol	Chain	Res	Type	Atoms	Z	Observed(Å)	Ideal(Å)
3	A	402	ADP	C5-C4	2.38	1.47	1.40
3	C	402	ADP	C5-C4	2.36	1.47	1.40
3	E	402	ADP	C5-C4	2.36	1.47	1.40
3	B	402	ADP	C5-C4	2.33	1.47	1.40
3	D	402	ADP	C5-C4	2.33	1.47	1.40

All (20) bond angle outliers are listed below:

Mol	Chain	Res	Type	Atoms	Z	Observed(°)	Ideal(°)
3	E	402	ADP	PA-O3A-PB	-3.94	119.30	132.83
3	B	402	ADP	PA-O3A-PB	-3.69	120.16	132.83
3	A	402	ADP	PA-O3A-PB	-3.67	120.23	132.83
3	C	402	ADP	PA-O3A-PB	-3.66	120.26	132.83
3	D	402	ADP	PA-O3A-PB	-3.58	120.55	132.83
3	B	402	ADP	C3'-C2'-C1'	3.23	105.84	100.98
3	A	402	ADP	C3'-C2'-C1'	3.19	105.78	100.98
3	C	402	ADP	C3'-C2'-C1'	3.16	105.74	100.98
3	E	402	ADP	C3'-C2'-C1'	3.11	105.66	100.98
3	D	402	ADP	N3-C2-N1	-3.01	123.97	128.68
3	D	402	ADP	C3'-C2'-C1'	2.93	105.39	100.98
3	C	402	ADP	N3-C2-N1	-2.89	124.17	128.68
3	A	402	ADP	N3-C2-N1	-2.88	124.18	128.68
3	E	402	ADP	N3-C2-N1	-2.85	124.22	128.68
3	B	402	ADP	N3-C2-N1	-2.71	124.45	128.68
3	E	402	ADP	C4-C5-N7	-2.57	106.72	109.40
3	D	402	ADP	C4-C5-N7	-2.46	106.84	109.40
3	B	402	ADP	C4-C5-N7	-2.39	106.91	109.40
3	C	402	ADP	C4-C5-N7	-2.38	106.92	109.40
3	A	402	ADP	C4-C5-N7	-2.35	106.94	109.40

There are no chirality outliers.

All (7) torsion outliers are listed below:

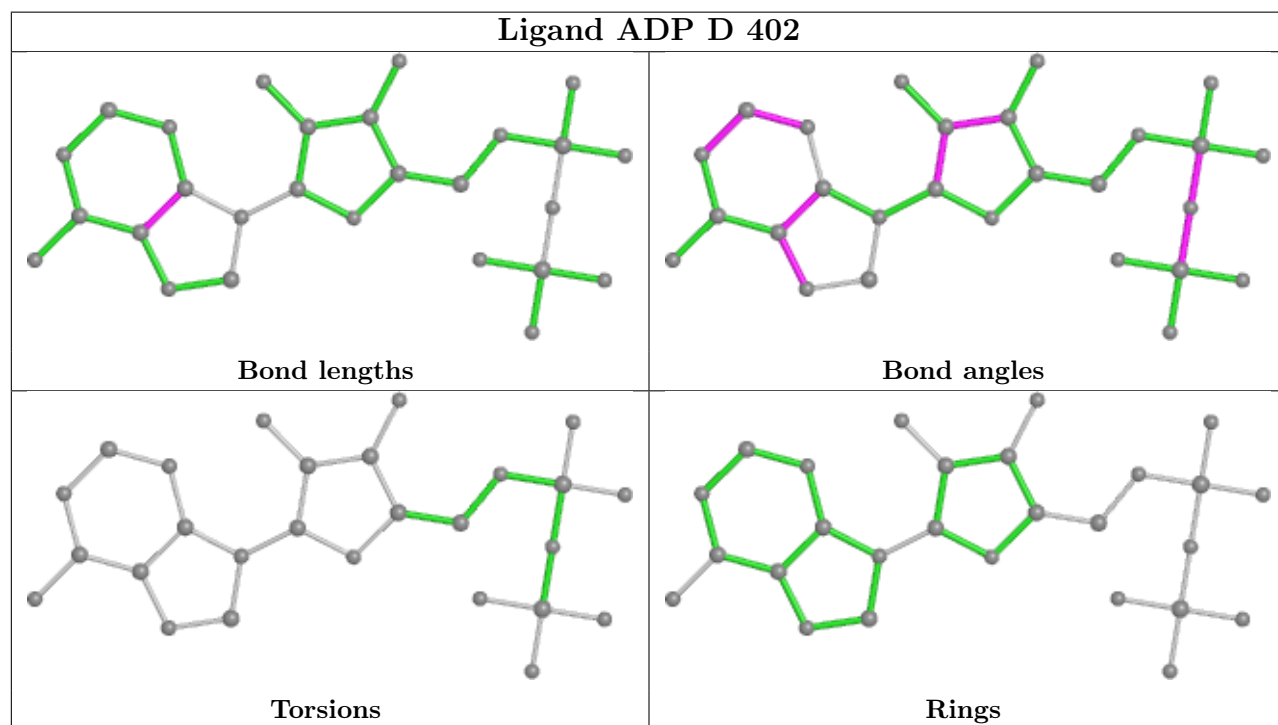
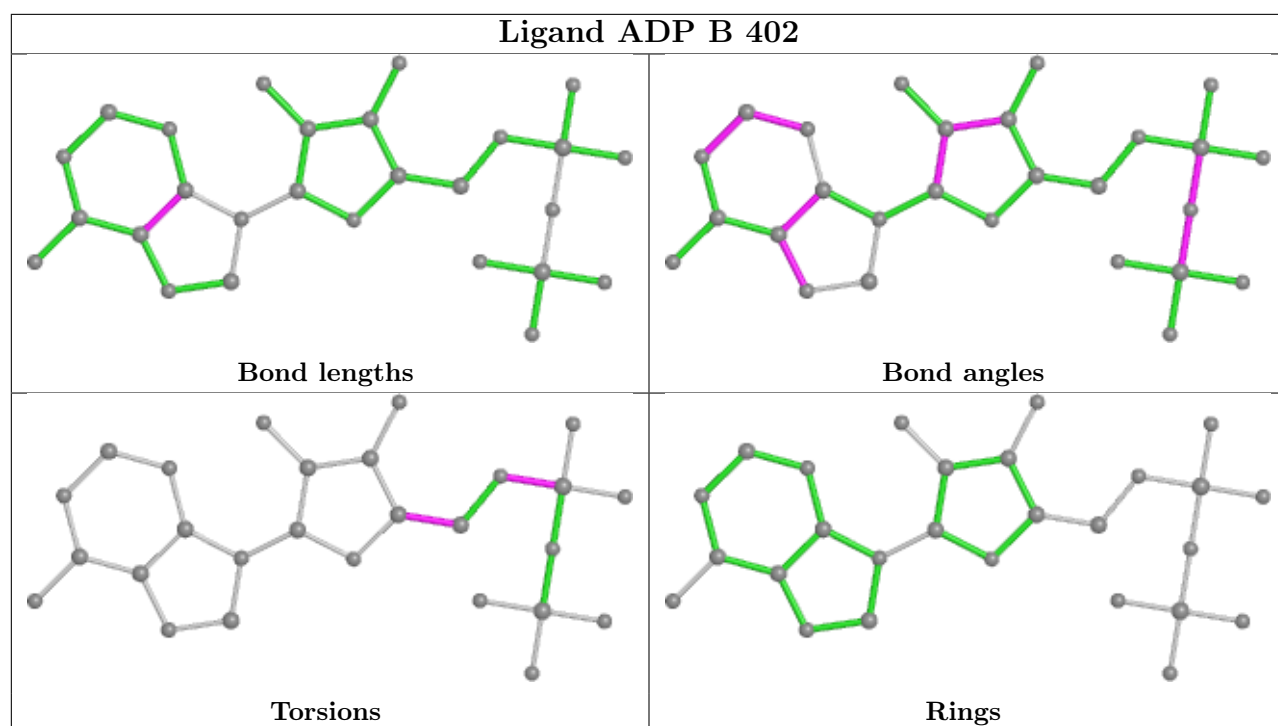
Mol	Chain	Res	Type	Atoms
3	B	402	ADP	C5'-O5'-PA-O2A
3	E	402	ADP	C5'-O5'-PA-O1A
3	E	402	ADP	C5'-O5'-PA-O3A
3	B	402	ADP	C5'-O5'-PA-O3A
3	B	402	ADP	C5'-O5'-PA-O1A
3	E	402	ADP	C3'-C4'-C5'-O5'
3	B	402	ADP	C3'-C4'-C5'-O5'

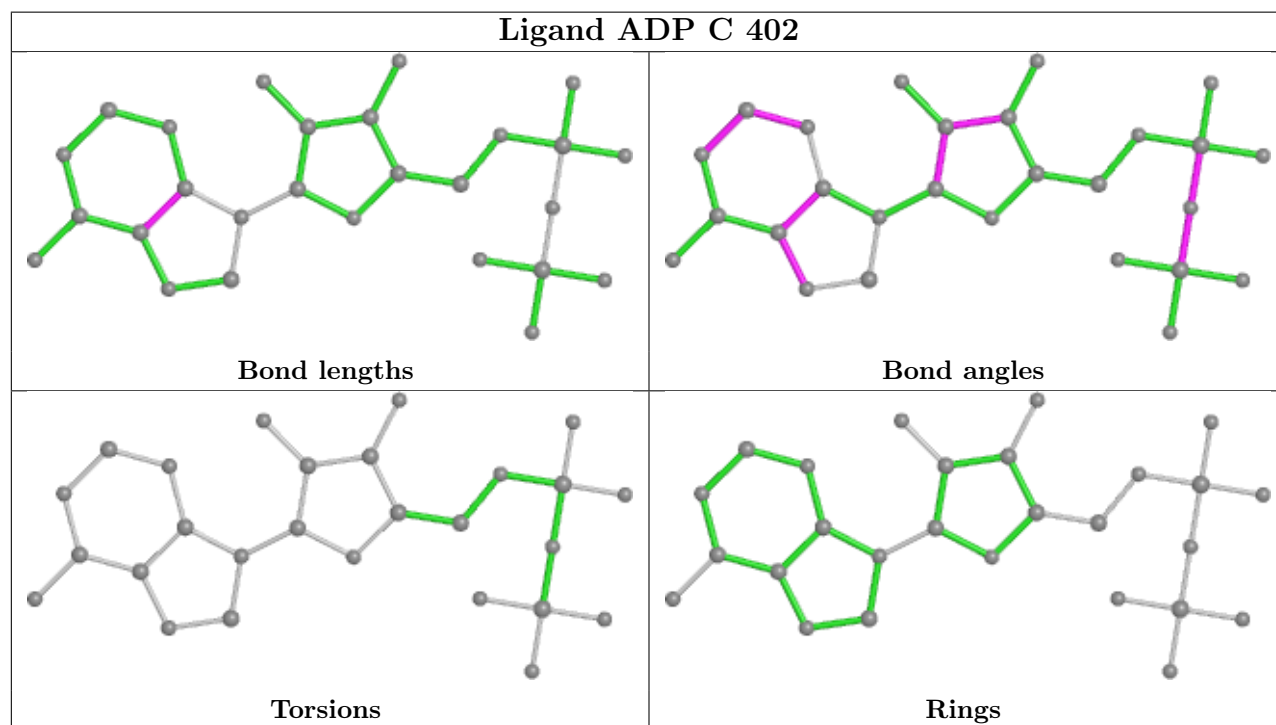
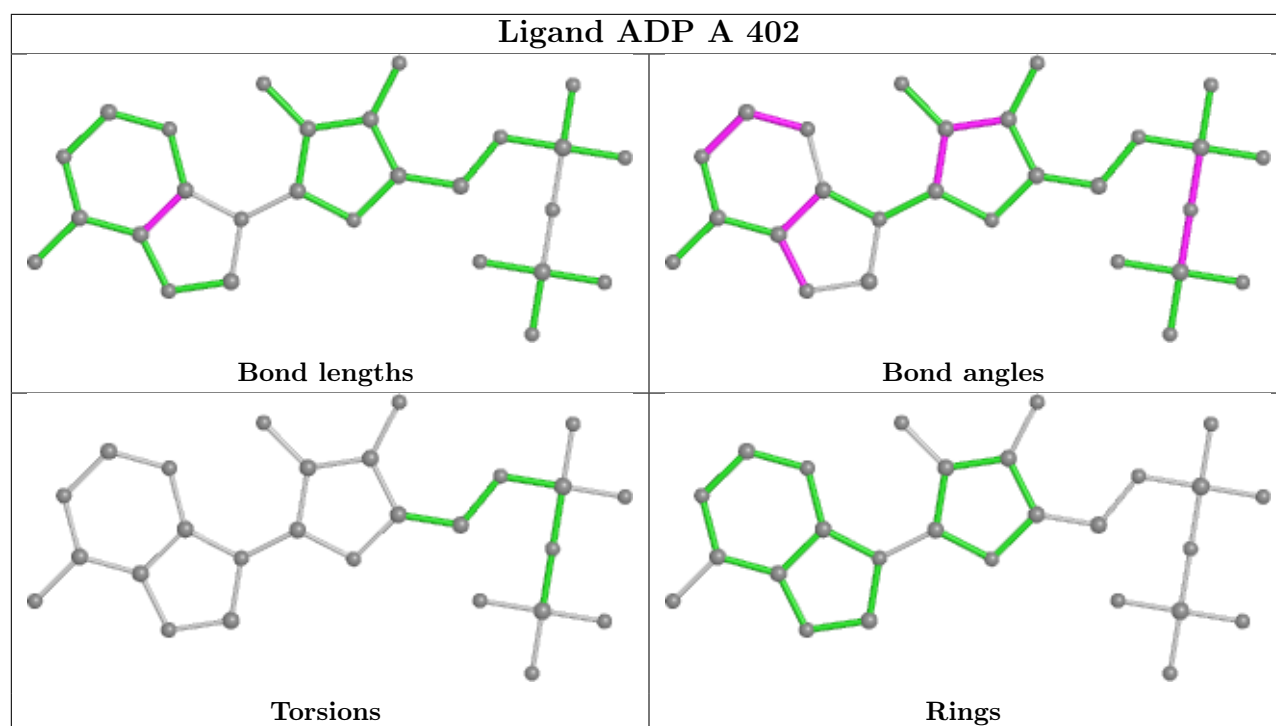
There are no ring outliers.

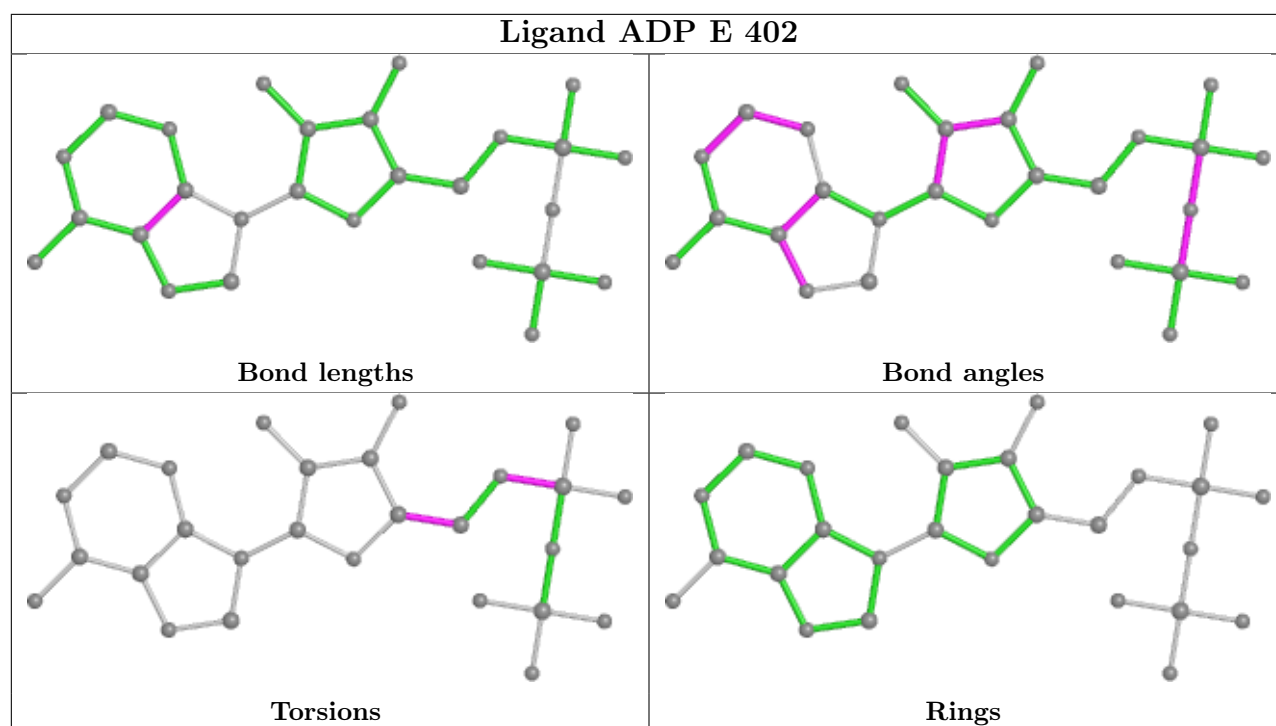
5 monomers are involved in 7 short contacts:

Mol	Chain	Res	Type	Clashes	Symm-Clashes
3	B	402	ADP	1	0
3	D	402	ADP	2	0
3	A	402	ADP	1	0
3	C	402	ADP	2	0
3	E	402	ADP	1	0

The following is a two-dimensional graphical depiction of Mogul quality analysis of bond lengths, bond angles, torsion angles, and ring geometry for all instances of the Ligand of Interest. In addition, ligands with molecular weight > 250 and outliers as shown on the validation Tables will also be included. For torsion angles, if less than 5% of the Mogul distribution of torsion angles is within 10 degrees of the torsion angle in question, then that torsion angle is considered an outlier. Any bond that is central to one or more torsion angles identified as an outlier by Mogul will be highlighted in the graph. For rings, the root-mean-square deviation (RMSD) between the ring in question and similar rings identified by Mogul is calculated over all ring torsion angles. If the average RMSD is greater than 60 degrees and the minimal RMSD between the ring in question and any Mogul-identified rings is also greater than 60 degrees, then that ring is considered an outlier. The outliers are highlighted in purple. The color gray indicates Mogul did not find sufficient equivalents in the CSD to analyse the geometry.







5.7 Other polymers [i](#)

There are no such residues in this entry.

5.8 Polymer linkage issues [i](#)

There are no chain breaks in this entry.

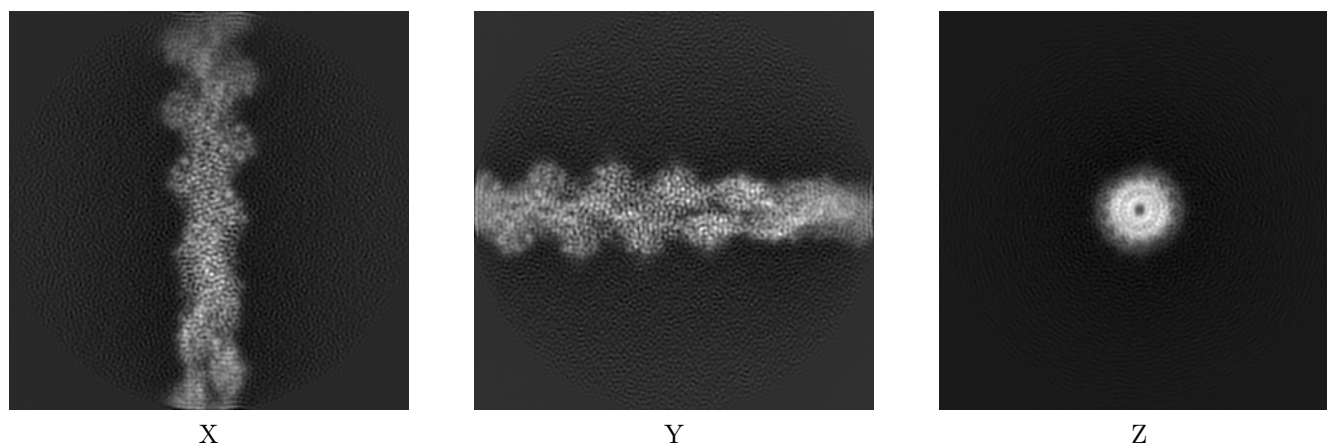
6 Map visualisation [i](#)

This section contains visualisations of the EMDB entry EMD-30171. These allow visual inspection of the internal detail of the map and identification of artifacts.

No raw map or half-maps were deposited for this entry and therefore no images, graphs, etc. pertaining to the raw map can be shown.

6.1 Orthogonal projections [i](#)

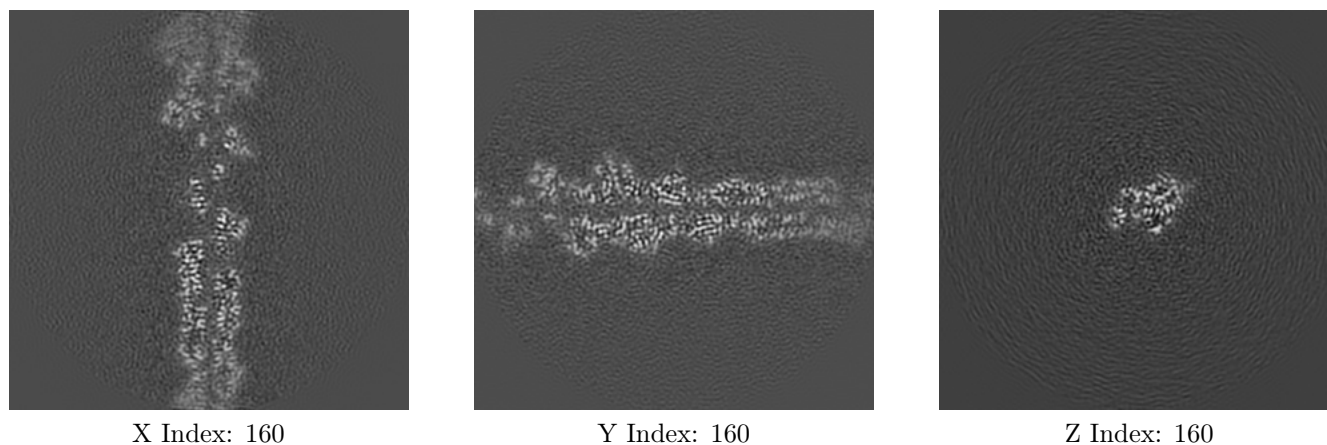
6.1.1 Primary map



The images above show the map projected in three orthogonal directions.

6.2 Central slices [i](#)

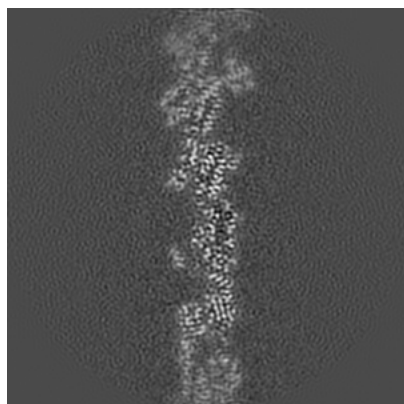
6.2.1 Primary map



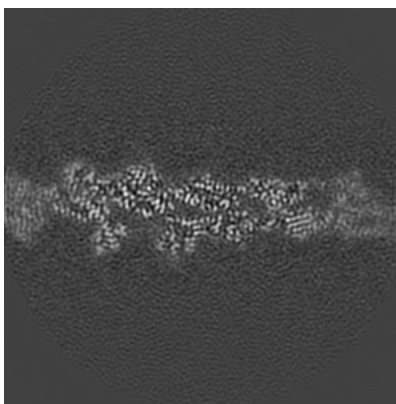
The images above show central slices of the map in three orthogonal directions.

6.3 Largest variance slices [i](#)

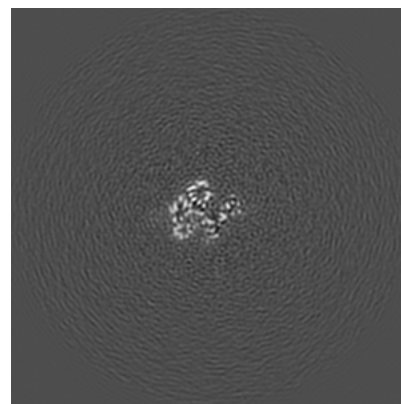
6.3.1 Primary map



X Index: 152



Y Index: 153



Z Index: 129

The images above show the largest variance slices of the map in three orthogonal directions.

6.4 Orthogonal surface views [i](#)

6.4.1 Primary map



X



Y



Z

The images above show the 3D surface view of the map at the recommended contour level 0.0477. These images, in conjunction with the slice images, may facilitate assessment of whether an appropriate contour level has been provided.

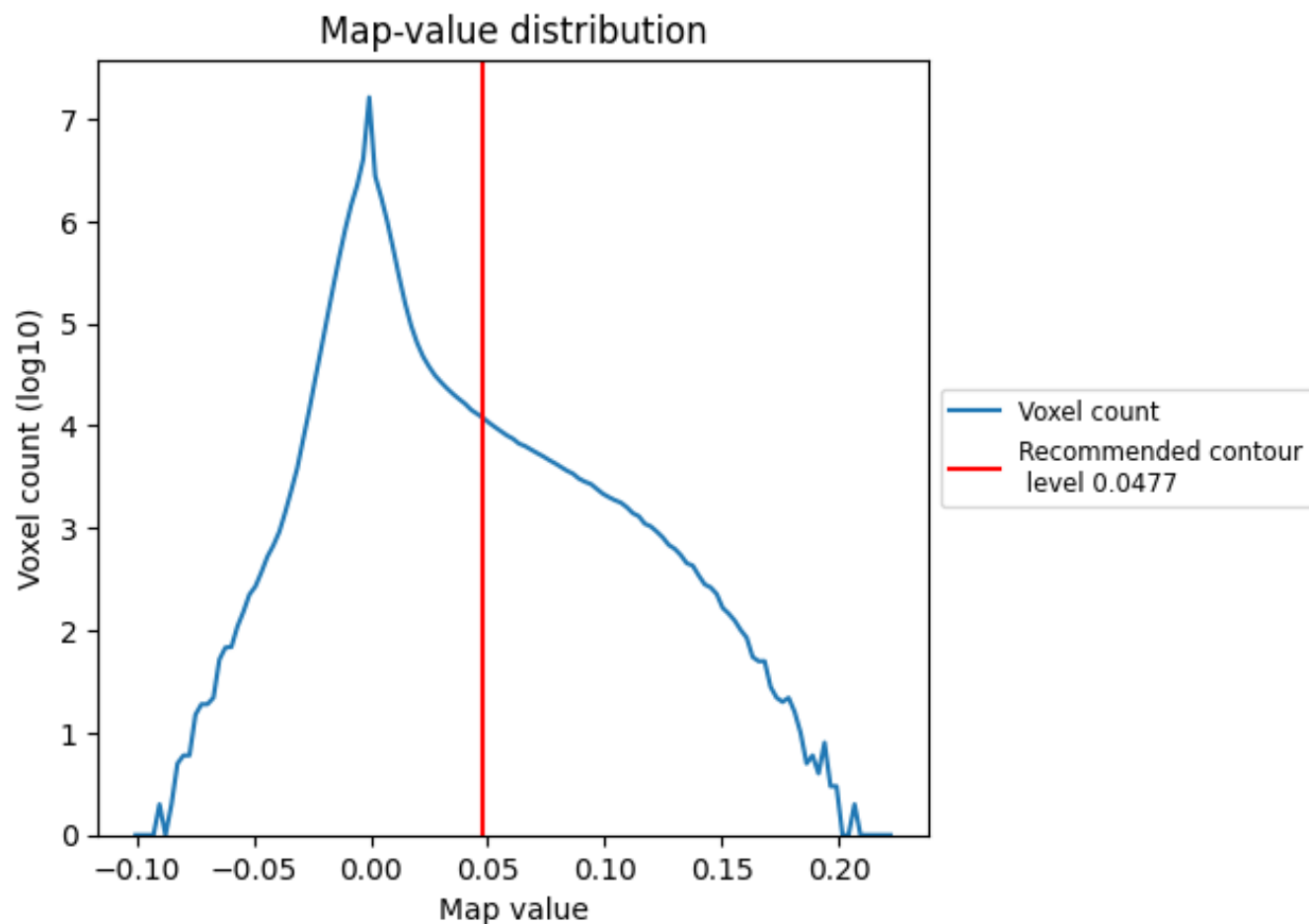
6.5 Mask visualisation

This section was not generated. No masks/segmentation were deposited.

7 Map analysis [i](#)

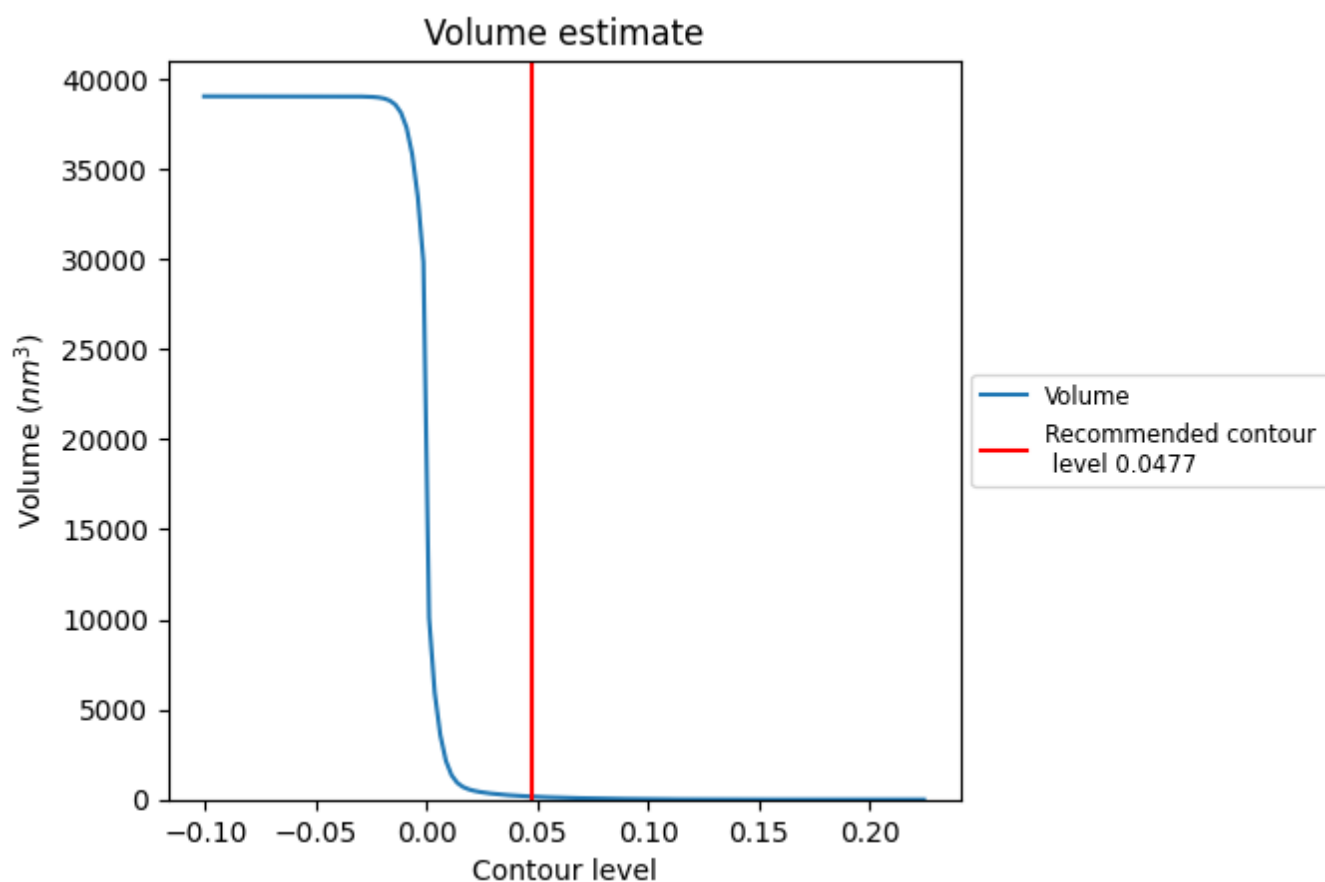
This section contains the results of statistical analysis of the map.

7.1 Map-value distribution [i](#)



The map-value distribution is plotted in 128 intervals along the x-axis. The y-axis is logarithmic. A spike in this graph at zero usually indicates that the volume has been masked.

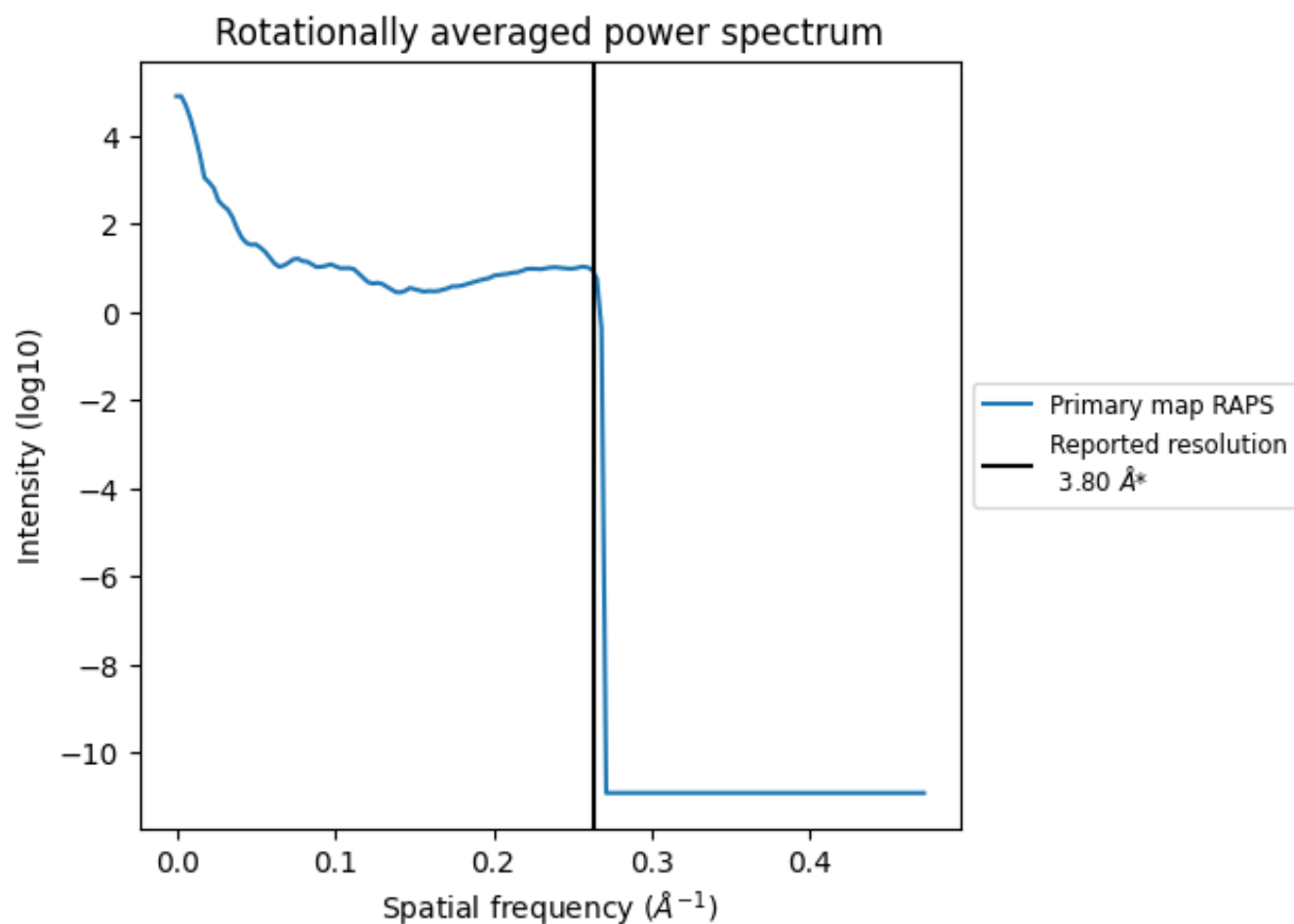
7.2 Volume estimate [i](#)



The volume at the recommended contour level is 166 nm^3 ; this corresponds to an approximate mass of 150 kDa.

The volume estimate graph shows how the enclosed volume varies with the contour level. The recommended contour level is shown as a vertical line and the intersection between the line and the curve gives the volume of the enclosed surface at the given level.

7.3 Rotationally averaged power spectrum ⓘ

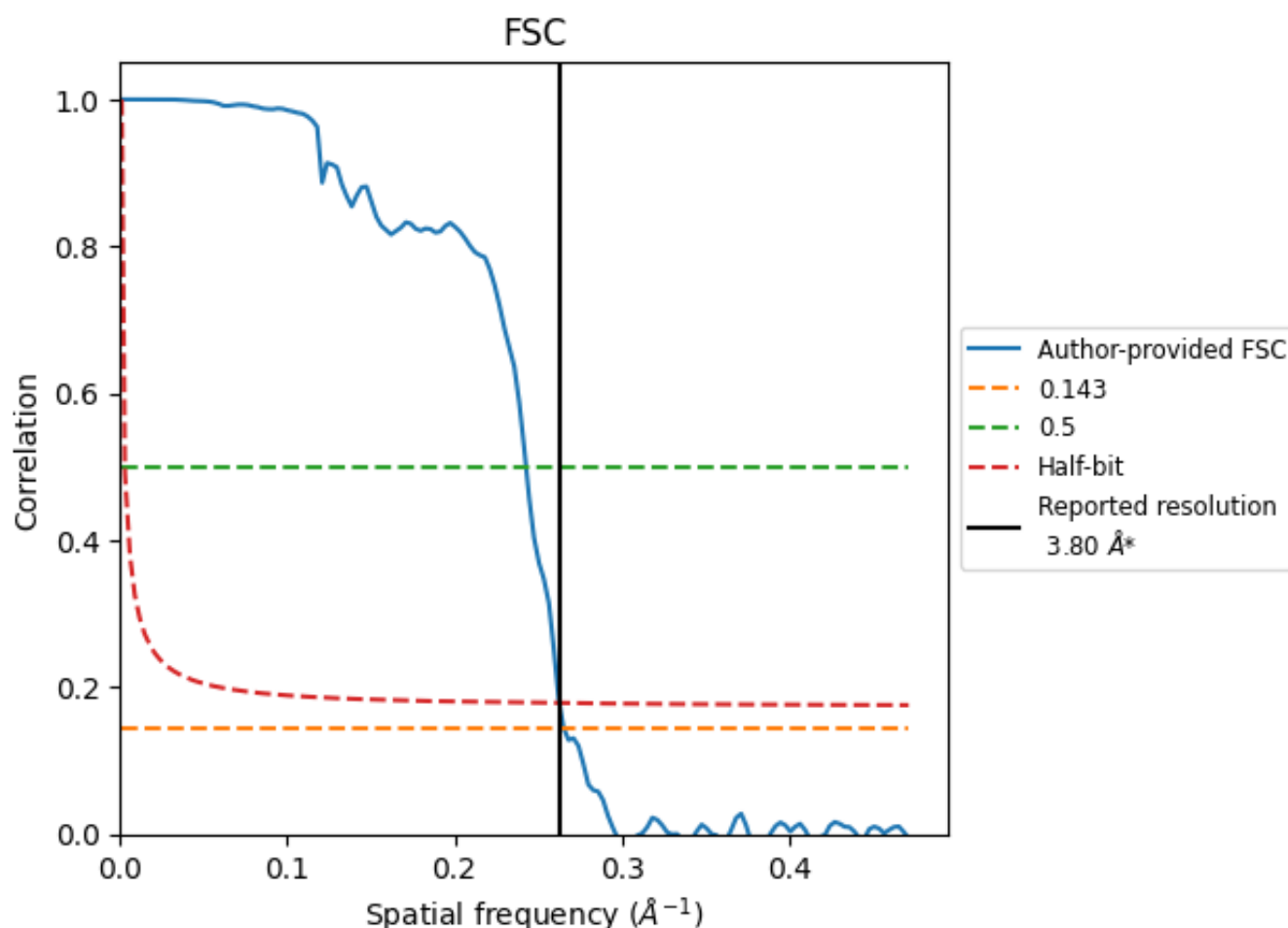


*Reported resolution corresponds to spatial frequency of 0.263 Å⁻¹

8 Fourier-Shell correlation [i](#)

Fourier-Shell Correlation (FSC) is the most commonly used method to estimate the resolution of single-particle and subtomogram-averaged maps. The shape of the curve depends on the imposed symmetry, mask and whether or not the two 3D reconstructions used were processed from a common reference. The reported resolution is shown as a black line. A curve is displayed for the half-bit criterion in addition to lines showing the 0.143 gold standard cut-off and 0.5 cut-off.

8.1 FSC [i](#)



*Reported resolution corresponds to spatial frequency of 0.263 Å⁻¹

8.2 Resolution estimates [i](#)

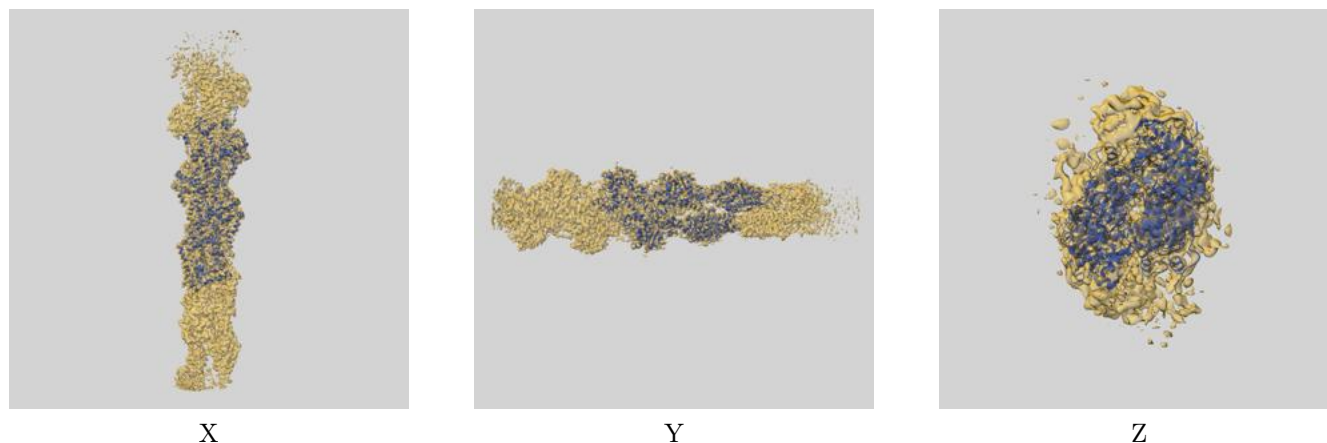
Resolution estimate (Å)	Estimation criterion (FSC cut-off)		
	0.143	0.5	Half-bit
Reported by author	3.80	-	-
Author-provided FSC curve	3.77	4.12	3.81
Unmasked-calculated*	-	-	-

*Resolution estimate based on FSC curve calculated by comparison of deposited half-maps.

9 Map-model fit [i](#)

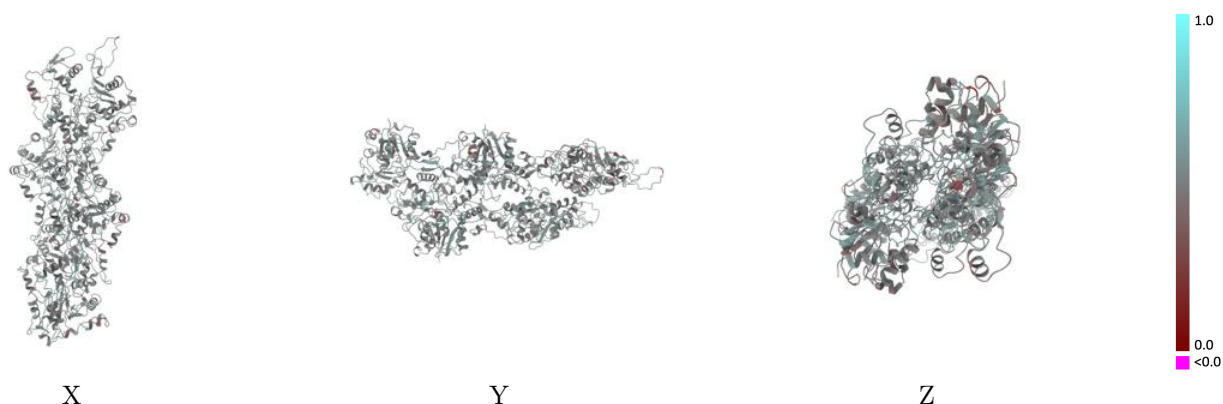
This section contains information regarding the fit between EMDB map EMD-30171 and PDB model 7BT7. Per-residue inclusion information can be found in section [3](#) on page [5](#).

9.1 Map-model overlay [i](#)



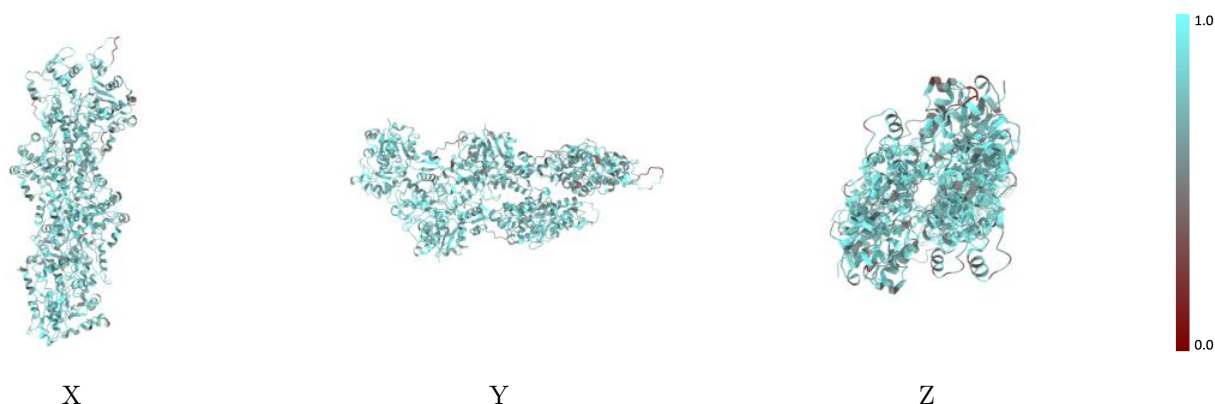
The images above show the 3D surface view of the map at the recommended contour level 0.0477 at 50% transparency in yellow overlaid with a ribbon representation of the model coloured in blue. These images allow for the visual assessment of the quality of fit between the atomic model and the map.

9.2 Q-score mapped to coordinate model [i](#)



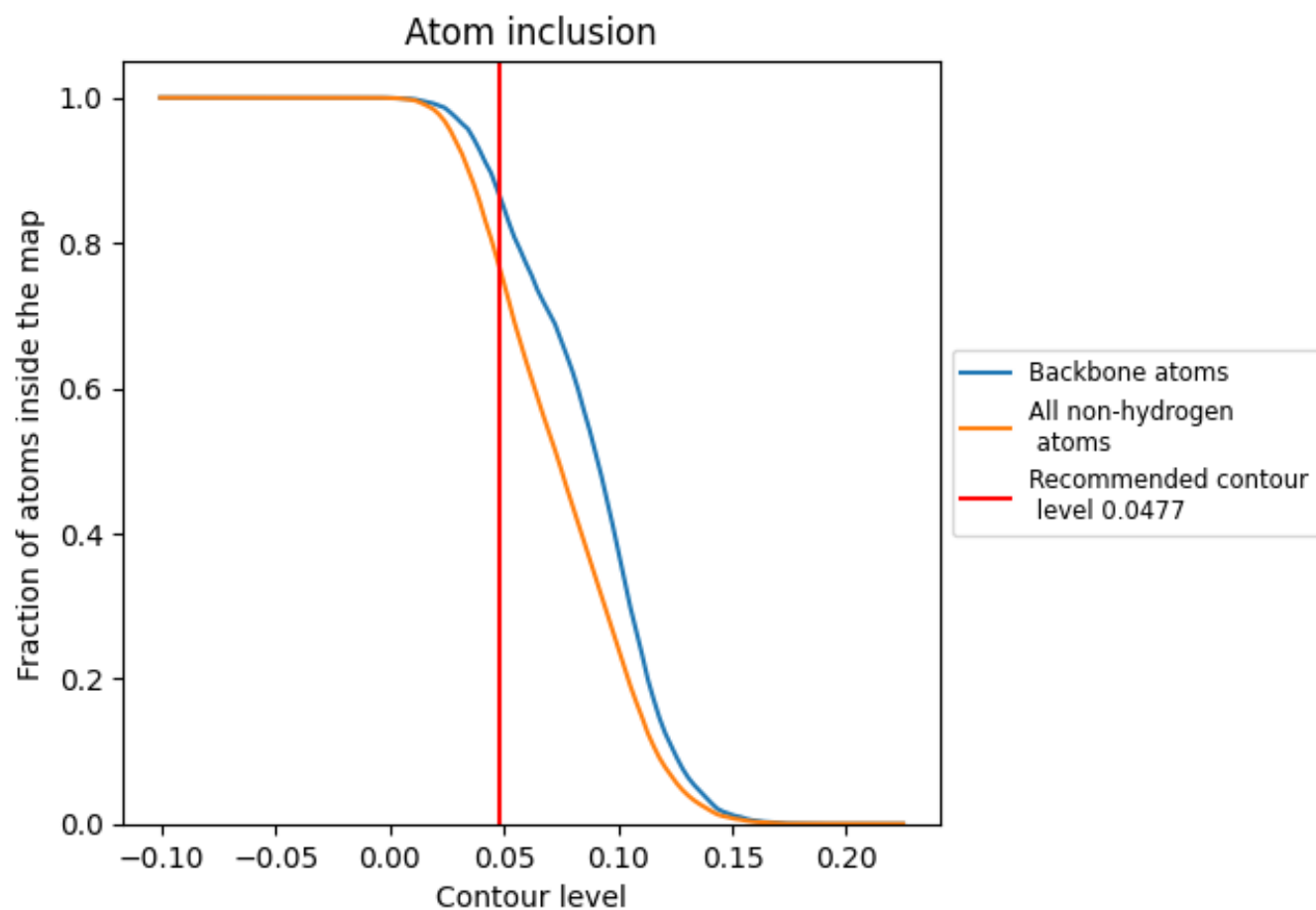
The images above show the model with each residue coloured according its Q-score. This shows their resolvability in the map with higher Q-score values reflecting better resolvability. Please note: Q-score is calculating the resolvability of atoms, and thus high values are only expected at resolutions at which atoms can be resolved. Low Q-score values may therefore be expected for many entries.

9.3 Atom inclusion mapped to coordinate model [i](#)



The images above show the model with each residue coloured according to its atom inclusion. This shows to what extent they are inside the map at the recommended contour level (0.0477).

9.4 Atom inclusion [i](#)



At the recommended contour level, 87% of all backbone atoms, 77% of all non-hydrogen atoms, are inside the map.

9.5 Map-model fit summary ⓘ

The table lists the average atom inclusion at the recommended contour level (0.0477) and Q-score for the entire model and for each chain.

Chain	Atom inclusion	Q-score
All	<div></div> 0.7699	<div></div> 0.5050
A	<div></div> 0.7847	<div></div> 0.5070
B	<div></div> 0.7897	<div></div> 0.5070
C	<div></div> 0.7772	<div></div> 0.5090
D	<div></div> 0.7666	<div></div> 0.5060
E	<div></div> 0.7313	<div></div> 0.4940

