



Full wwPDB X-ray Structure Validation Report ⓘ

Nov 2, 2020 – 06:09 PM JST

PDB ID : 7BTV
Title : Crystal structure of EHMT2 SET domain in complex with compound 5.
Authors : Suzuki, M.; Mizuno, T.; Katayama, K.
Deposited on : 2020-04-03
Resolution : 2.00 Å(reported)

This is a Full wwPDB X-ray Structure Validation Report for a publicly released PDB entry.

We welcome your comments at validation@mail.wwpdb.org

A user guide is available at

<https://www.wwpdb.org/validation/2017/XrayValidationReportHelp>

with specific help available everywhere you see the ⓘ symbol.

The following versions of software and data (see [references ⓘ](#)) were used in the production of this report:

MolProbity : 4.02b-467
Mogul : 1.8.5 (274361), CSD as541be (2020)
Xtriage (Phenix) : 1.13
EDS : 2.14.6
buster-report : 1.1.7 (2018)
Percentile statistics : 20191225.v01 (using entries in the PDB archive December 25th 2019)
Refmac : 5.8.0158
CCP4 : 7.0.044 (Gargrove)
Ideal geometry (proteins) : Engh & Huber (2001)
Ideal geometry (DNA, RNA) : Parkinson et al. (1996)
Validation Pipeline (wwPDB-VP) : 2.14.6

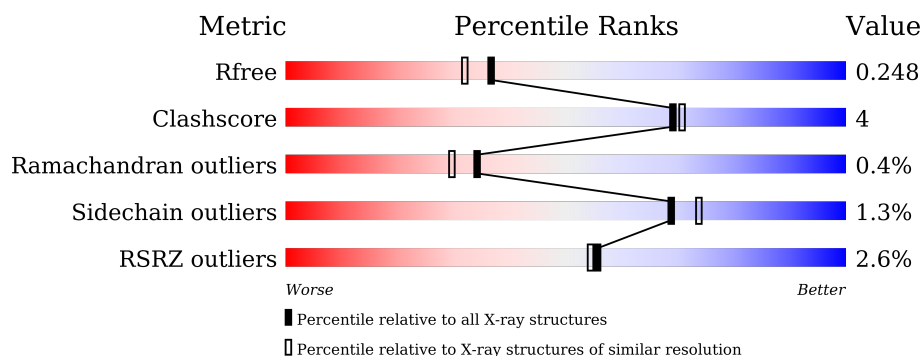
1 Overall quality at a glance

The following experimental techniques were used to determine the structure:

X-RAY DIFFRACTION

The reported resolution of this entry is 2.00 Å.

Percentile scores (ranging between 0-100) for global validation metrics of the entry are shown in the following graphic. The table shows the number of entries on which the scores are based.



Metric	Whole archive (#Entries)	Similar resolution (#Entries, resolution range(Å))
R_{free}	130704	8085 (2.00-2.00)
Clashscore	141614	9178 (2.00-2.00)
Ramachandran outliers	138981	9054 (2.00-2.00)
Sidechain outliers	138945	9053 (2.00-2.00)
RSRZ outliers	127900	7900 (2.00-2.00)

The table below summarises the geometric issues observed across the polymeric chains and their fit to the electron density. The red, orange, yellow and green segments on the lower bar indicate the fraction of residues that contain outliers for ≥ 3 , 2, 1 and 0 types of geometric quality criteria respectively. A grey segment represents the fraction of residues that are not modelled. The numeric value for each fraction is indicated below the corresponding segment, with a dot representing fractions $\leq 5\%$. The upper red bar (where present) indicates the fraction of residues that have poor fit to the electron density. The numeric value is given above the bar.

Mol	Chain	Length	Quality of chain
1	A	283	<div> <div>2%</div> <div> <div></div> <div>87%</div> <div>8%</div> <div>••</div> </div> </div>
1	B	283	<div> <div>3%</div> <div> <div></div> <div>87%</div> <div>9%</div> <div>•</div> </div> </div>

2 Entry composition

There are 5 unique types of molecules in this entry. The entry contains 4785 atoms, of which 0 are hydrogens and 0 are deuteriums.

In the tables below, the ZeroOcc column contains the number of atoms modelled with zero occupancy, the AltConf column contains the number of residues with at least one atom in alternate conformation and the Trace column contains the number of residues modelled with at most 2 atoms.

- Molecule 1 is a protein called Histone-lysine N-methyltransferase EHMT2.

Mol	Chain	Residues	Atoms					ZeroOcc	AltConf	Trace
1	A	271	Total	C	N	O	S	0	3	0
			2163	1350	378	412	23			
1	B	272	Total	C	N	O	S	0	3	0
			2184	1362	383	416	23			

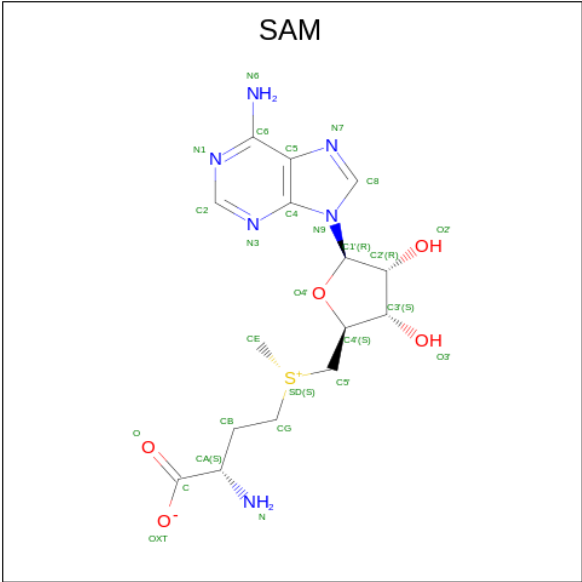
There are 4 discrepancies between the modelled and reference sequences:

Chain	Residue	Modelled	Actual	Comment	Reference
A	911	GLY	-	expression tag	UNP Q96KQ7
A	912	SER	-	expression tag	UNP Q96KQ7
B	911	GLY	-	expression tag	UNP Q96KQ7
B	912	SER	-	expression tag	UNP Q96KQ7

- Molecule 2 is ZINC ION (three-letter code: ZN) (formula: Zn).

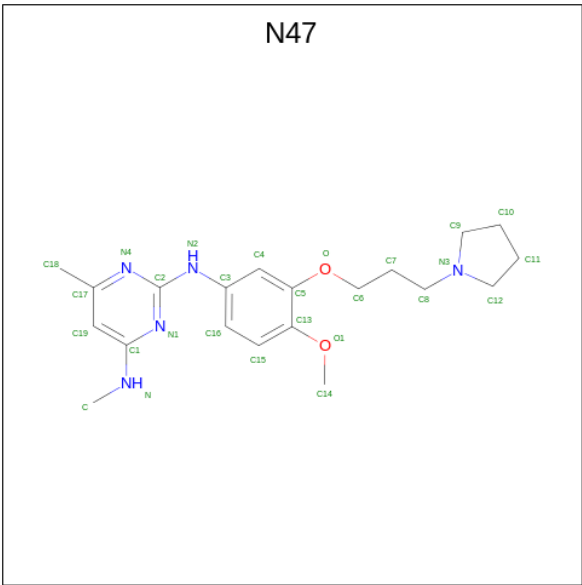
Mol	Chain	Residues	Atoms		ZeroOcc	AltConf
2	B	4	Total	Zn	0	0
			4	4		
2	A	4	Total	Zn	0	0
			4	4		

- Molecule 3 is S-ADENOSYLMETHIONINE (three-letter code: SAM) (formula: C₁₅H₂₂N₆O₅S).



Mol	Chain	Residues	Atoms					ZeroOcc	AltConf
3	A	1	Total	C	N	O	S	0	0
			27	15	6	5	1		
3	B	1	Total	C	N	O	S	0	0
			27	15	6	5	1		

- Molecule 4 is N 2 -{4-methoxy-3-[3-(pyrrolidin-1-yl)propoxy]phenyl}-N 4 ,6-dimethylpyrimidine-2,4-diamine (three-letter code: N47) (formula: C₂₀H₂₉N₅O₂) (labeled as "Ligand of Interest" by author).



Mol	Chain	Residues	Atoms				ZeroOcc	AltConf
4	A	1	Total	C	N	O	0	0
			27	20	5	2		

Continued on next page...

Continued from previous page...

Mol	Chain	Residues	Atoms				ZeroOcc	AltConf
4	B	1	Total	C	N	O	0	0
			27	20	5	2		

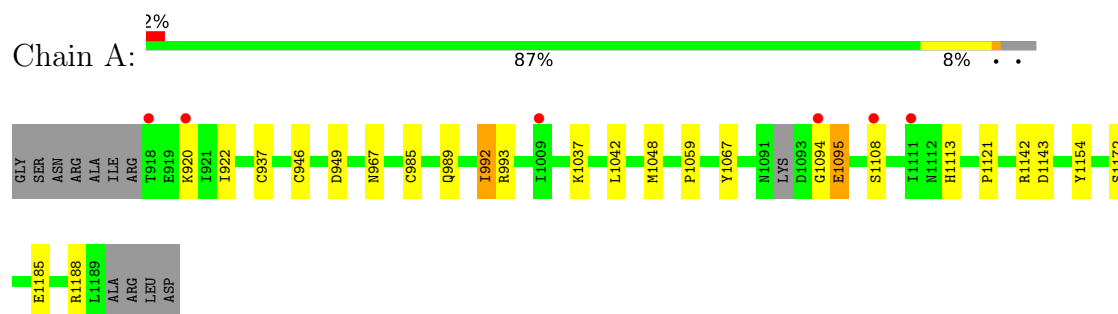
- Molecule 5 is water.

Mol	Chain	Residues	Atoms		ZeroOcc	AltConf
5	A	137	Total	O	0	0
			137	137		
5	B	185	Total	O	0	0
			185	185		

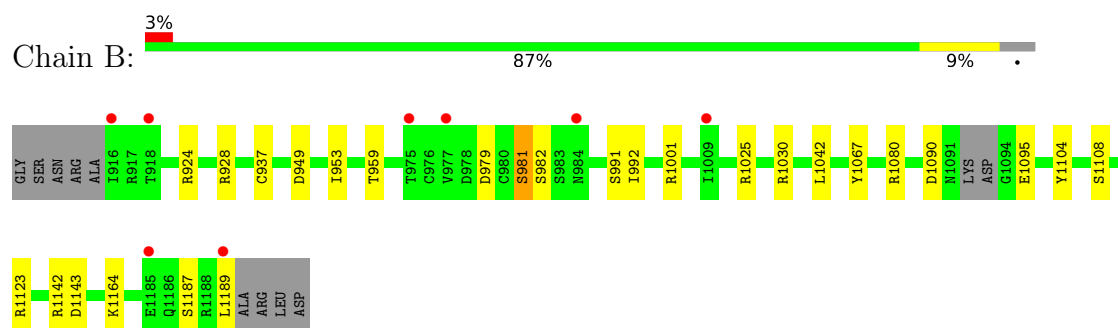
3 Residue-property plots [i](#)

These plots are drawn for all protein, RNA, DNA and oligosaccharide chains in the entry. The first graphic for a chain summarises the proportions of the various outlier classes displayed in the second graphic. The second graphic shows the sequence view annotated by issues in geometry and electron density. Residues are color-coded according to the number of geometric quality criteria for which they contain at least one outlier: green = 0, yellow = 1, orange = 2 and red = 3 or more. A red dot above a residue indicates a poor fit to the electron density ($RSRZ > 2$). Stretches of 2 or more consecutive residues without any outlier are shown as a green connector. Residues present in the sample, but not in the model, are shown in grey.

- Molecule 1: Histone-lysine N-methyltransferase EHMT2



- Molecule 1: Histone-lysine N-methyltransferase EHMT2



4 Data and refinement statistics

Property	Value	Source
Space group	P 1 21 1	Depositor
Cell constants a, b, c, α , β , γ	56.43Å 79.11Å 72.53Å 90.00° 91.80° 90.00°	Depositor
Resolution (Å)	25.00 – 2.00 24.71 – 2.00	Depositor EDS
% Data completeness (in resolution range)	98.7 (25.00-2.00) 98.8 (24.71-2.00)	Depositor EDS
R_{merge}	0.07	Depositor
R_{sym}	(Not available)	Depositor
$\langle I/\sigma(I) \rangle$ ¹	1.95 (at 1.99Å)	Xtriage
Refinement program	REFMAC 5.8.0258	Depositor
R, R_{free}	0.192 , 0.245 0.195 , 0.248	Depositor DCC
R_{free} test set	2085 reflections (4.89%)	wwPDB-VP
Wilson B-factor (Å ²)	28.8	Xtriage
Anisotropy	0.140	Xtriage
Bulk solvent k_{sol} (e/Å ³), B_{sol} (Å ²)	0.33 , 43.1	EDS
L-test for twinning ²	$\langle L \rangle = 0.50$, $\langle L^2 \rangle = 0.33$	Xtriage
Estimated twinning fraction	0.027 for h,-k,-l	Xtriage
F_o, F_c correlation	0.96	EDS
Total number of atoms	4785	wwPDB-VP
Average B, all atoms (Å ²)	36.0	wwPDB-VP

Xtriage's analysis on translational NCS is as follows: *The analyses of the Patterson function reveals a significant off-origin peak that is 27.47 % of the origin peak, indicating pseudo-translational symmetry. The chance of finding a peak of this or larger height randomly in a structure without pseudo-translational symmetry is equal to 2.1878e-03. The detected translational NCS is most likely also responsible for the elevated intensity ratio.*

¹Intensities estimated from amplitudes.

²Theoretical values of $\langle |L| \rangle$, $\langle L^2 \rangle$ for acentric reflections are 0.5, 0.333 respectively for untwinned datasets, and 0.375, 0.2 for perfectly twinned datasets.

5 Model quality [i](#)

5.1 Standard geometry [i](#)

Bond lengths and bond angles in the following residue types are not validated in this section: ZN, N47, SAM

The Z score for a bond length (or angle) is the number of standard deviations the observed value is removed from the expected value. A bond length (or angle) with $|Z| > 5$ is considered an outlier worth inspection. RMSZ is the root-mean-square of all Z scores of the bond lengths (or angles).

Mol	Chain	Bond lengths		Bond angles	
		RMSZ	$\# Z > 5$	RMSZ	$\# Z > 5$
1	A	0.37	0/2218	0.74	0/3000
1	B	0.40	0/2239	0.77	2/3027 (0.1%)
All	All	0.38	0/4457	0.76	2/6027 (0.0%)

There are no bond length outliers.

All (2) bond angle outliers are listed below:

Mol	Chain	Res	Type	Atoms	Z	Observed(°)	Ideal(°)
1	B	1080	ARG	CG-CD-NE	6.21	124.84	111.80
1	B	928	ARG	CG-CD-NE	5.05	122.40	111.80

There are no chirality outliers.

There are no planarity outliers.

5.2 Too-close contacts [i](#)

In the following table, the Non-H and H(model) columns list the number of non-hydrogen atoms and hydrogen atoms in the chain respectively. The H(added) column lists the number of hydrogen atoms added and optimized by MolProbity. The Clashes column lists the number of clashes within the asymmetric unit, whereas Symm-Clashes lists symmetry related clashes.

Mol	Chain	Non-H	H(model)	H(added)	Clashes	Symm-Clashes
1	A	2163	0	2023	16	0
1	B	2184	0	2053	18	0
2	A	4	0	0	0	0
2	B	4	0	0	0	0
3	A	27	0	22	0	0
3	B	27	0	22	0	0
4	A	27	0	0	0	0

Continued on next page...

Continued from previous page...

Mol	Chain	Non-H	H(model)	H(added)	Clashes	Symm-Clashes
4	B	27	0	0	0	0
5	A	137	0	0	3	0
5	B	185	0	0	5	0
All	All	4785	0	4120	32	0

The all-atom clashscore is defined as the number of clashes found per 1000 atoms (including hydrogen atoms). The all-atom clashscore for this structure is 4.

All (32) close contacts within the same asymmetric unit are listed below, sorted by their clash magnitude.

Atom-1	Atom-2	Interatomic distance (Å)	Clash overlap (Å)
1:B:949[A]:ASP:CG	5:B:1601:HOH:O	2.34	0.66
1:A:1048:MET:HE2	5:A:1650:HOH:O	2.01	0.61
1:A:967:ASN:CG	1:B:959:THR:O	2.40	0.60
1:A:1142[A]:ARG:HG3	1:A:1143:ASP:O	2.03	0.57
1:B:1142[A]:ARG:HG3	1:B:1143:ASP:O	2.08	0.53
1:A:985:CYS:O	1:A:989:GLN:HG3	2.08	0.53
1:B:991:SER:HB3	5:B:1602:HOH:O	2.09	0.53
1:A:967:ASN:ND2	1:B:959:THR:O	2.42	0.53
1:B:1001:ARG:HD2	5:B:1760:HOH:O	2.09	0.52
1:B:953:ILE:HD13	1:B:1104:TYR:HB3	1.90	0.52
1:A:922:ILE:HG13	1:A:946:CYS:HB2	1.93	0.50
1:B:991:SER:CB	5:B:1602:HOH:O	2.59	0.50
1:B:991:SER:O	1:B:992:ILE:HB	2.13	0.49
1:B:1187:SER:C	1:B:1189:LEU:H	2.15	0.48
1:B:1025:ARG:O	1:B:1030:ARG:HD2	2.14	0.48
1:A:1037:LYS:NZ	5:A:1607:HOH:O	2.47	0.48
1:A:1121:PRO:HD2	5:A:1683:HOH:O	2.15	0.47
1:A:1113:HIS:HB2	1:A:1154:TYR:CG	2.51	0.46
1:A:937:CYS:HA	1:A:1042:LEU:O	2.15	0.46
1:B:979:ASP:OD1	1:B:981:SER:OG	2.33	0.46
1:B:1095:GLU:O	1:B:1095:GLU:HG3	2.16	0.46
1:A:989:GLN:HA	1:A:992:ILE:O	2.18	0.44
1:B:1067:TYR:HA	1:B:1108:SER:OG	2.19	0.43
1:A:1067:TYR:HA	1:A:1108:SER:OG	2.20	0.41
1:A:1094:GLY:O	1:A:1095:GLU:CB	2.68	0.41
1:B:937:CYS:HA	1:B:1042:LEU:O	2.21	0.40
1:A:1059:PRO:HA	1:A:1143:ASP:OD1	2.22	0.40
1:A:1185:GLU:OE2	1:A:1188:ARG:HD3	2.22	0.40
1:B:1090:ASP:O	1:B:1123:ARG:NH2	2.48	0.40
1:B:924:ARG:HG2	5:B:1698:HOH:O	2.20	0.40

There are no symmetry-related clashes.

5.3 Torsion angles [i](#)

5.3.1 Protein backbone [i](#)

In the following table, the Percentiles column shows the percent Ramachandran outliers of the chain as a percentile score with respect to all X-ray entries followed by that with respect to entries of similar resolution.

The Analysed column shows the number of residues for which the backbone conformation was analysed, and the total number of residues.

Mol	Chain	Analysed	Favoured	Allowed	Outliers	Percentiles	
1	A	270/283 (95%)	252 (93%)	16 (6%)	2 (1%)	22	16
1	B	271/283 (96%)	250 (92%)	21 (8%)	0	100	100
All	All	541/566 (96%)	502 (93%)	37 (7%)	2 (0%)	34	30

All (2) Ramachandran outliers are listed below:

Mol	Chain	Res	Type
1	A	1095	GLU
1	A	992	ILE

5.3.2 Protein sidechains [i](#)

In the following table, the Percentiles column shows the percent sidechain outliers of the chain as a percentile score with respect to all X-ray entries followed by that with respect to entries of similar resolution.

The Analysed column shows the number of residues for which the sidechain conformation was analysed, and the total number of residues.

Mol	Chain	Analysed	Rotameric	Outliers	Percentiles	
1	A	236/253 (93%)	233 (99%)	3 (1%)	69	74
1	B	240/253 (95%)	237 (99%)	3 (1%)	69	74
All	All	476/506 (94%)	470 (99%)	6 (1%)	69	74

All (6) residues with a non-rotameric sidechain are listed below:

Mol	Chain	Res	Type
1	A	920	LYS

Continued on next page...

Continued from previous page...

Mol	Chain	Res	Type
1	A	993	ARG
1	A	1172	SER
1	B	981	SER
1	B	982	SER
1	B	1164	LYS

Some sidechains can be flipped to improve hydrogen bonding and reduce clashes. There are no such sidechains identified.

5.3.3 RNA [i](#)

There are no RNA molecules in this entry.

5.4 Non-standard residues in protein, DNA, RNA chains [i](#)

There are no non-standard protein/DNA/RNA residues in this entry.

5.5 Carbohydrates [i](#)

There are no monosaccharides in this entry.

5.6 Ligand geometry [i](#)

Of 12 ligands modelled in this entry, 8 are monoatomic - leaving 4 for Mogul analysis.

In the following table, the Counts columns list the number of bonds (or angles) for which Mogul statistics could be retrieved, the number of bonds (or angles) that are observed in the model and the number of bonds (or angles) that are defined in the Chemical Component Dictionary. The Link column lists molecule types, if any, to which the group is linked. The Z score for a bond length (or angle) is the number of standard deviations the observed value is removed from the expected value. A bond length (or angle) with $|Z| > 2$ is considered an outlier worth inspection. RMSZ is the root-mean-square of all Z scores of the bond lengths (or angles).

Mol	Type	Chain	Res	Link	Bond lengths			Bond angles		
					Counts	RMSZ	$\# Z > 2$	Counts	RMSZ	$\# Z > 2$
4	N47	B	1506	-	29,29,29	1.30	5 (17%)	37,38,38	1.98	8 (21%)
3	SAM	A	1505	-	21,29,29	0.65	0	18,42,42	0.94	1 (5%)
4	N47	A	1506	-	29,29,29	0.95	0	37,38,38	1.68	7 (18%)
3	SAM	B	1505	-	21,29,29	0.66	0	18,42,42	1.07	1 (5%)

In the following table, the Chirals column lists the number of chiral outliers, the number of chiral centers analysed, the number of these observed in the model and the number defined in the Chemical Component Dictionary. Similar counts are reported in the Torsion and Rings columns. '-' means no outliers of that kind were identified.

Mol	Type	Chain	Res	Link	Chirals	Torsions	Rings
4	N47	B	1506	-	-	0/15/22/22	0/3/3/3
3	SAM	A	1505	-	-	2/8/33/33	0/3/3/3
4	N47	A	1506	-	-	2/15/22/22	0/3/3/3
3	SAM	B	1505	-	-	3/8/33/33	0/3/3/3

All (5) bond length outliers are listed below:

Mol	Chain	Res	Type	Atoms	Z	Observed(Å)	Ideal(Å)
4	B	1506	N47	C2-N2	2.68	1.42	1.36
4	B	1506	N47	C13-C5	2.28	1.45	1.40
4	B	1506	N47	C4-C3	2.22	1.43	1.39
4	B	1506	N47	C16-C15	2.12	1.42	1.38
4	B	1506	N47	C4-C5	2.08	1.42	1.38

All (17) bond angle outliers are listed below:

Mol	Chain	Res	Type	Atoms	Z	Observed(°)	Ideal(°)
4	B	1506	N47	C-N-C1	-6.72	117.20	122.97
4	A	1506	N47	O-C5-C13	4.89	125.82	115.73
4	A	1506	N47	C-N-C1	-4.76	118.88	122.97
4	B	1506	N47	O1-C13-C5	4.29	121.39	115.41
4	B	1506	N47	O-C5-C13	4.03	124.06	115.73
4	A	1506	N47	O-C5-C4	-3.40	115.75	123.58
4	B	1506	N47	O-C5-C4	-3.17	116.29	123.58
4	B	1506	N47	C6-O-C5	2.91	124.80	117.69
4	B	1506	N47	C9-N3-C12	2.88	106.84	104.04
4	A	1506	N47	O1-C13-C5	2.64	119.08	115.41
4	B	1506	N47	C3-N2-C2	2.57	136.69	129.23
3	B	1505	SAM	C5-C6-N6	2.56	124.24	120.35
4	A	1506	N47	C14-O1-C13	2.36	121.10	117.53
4	A	1506	N47	C10-C9-N3	2.34	106.65	103.92
4	B	1506	N47	O1-C13-C15	-2.31	120.40	124.37
3	A	1505	SAM	C5-C6-N6	2.12	123.57	120.35
4	A	1506	N47	C7-C8-N3	-2.05	108.68	113.84

There are no chirality outliers.

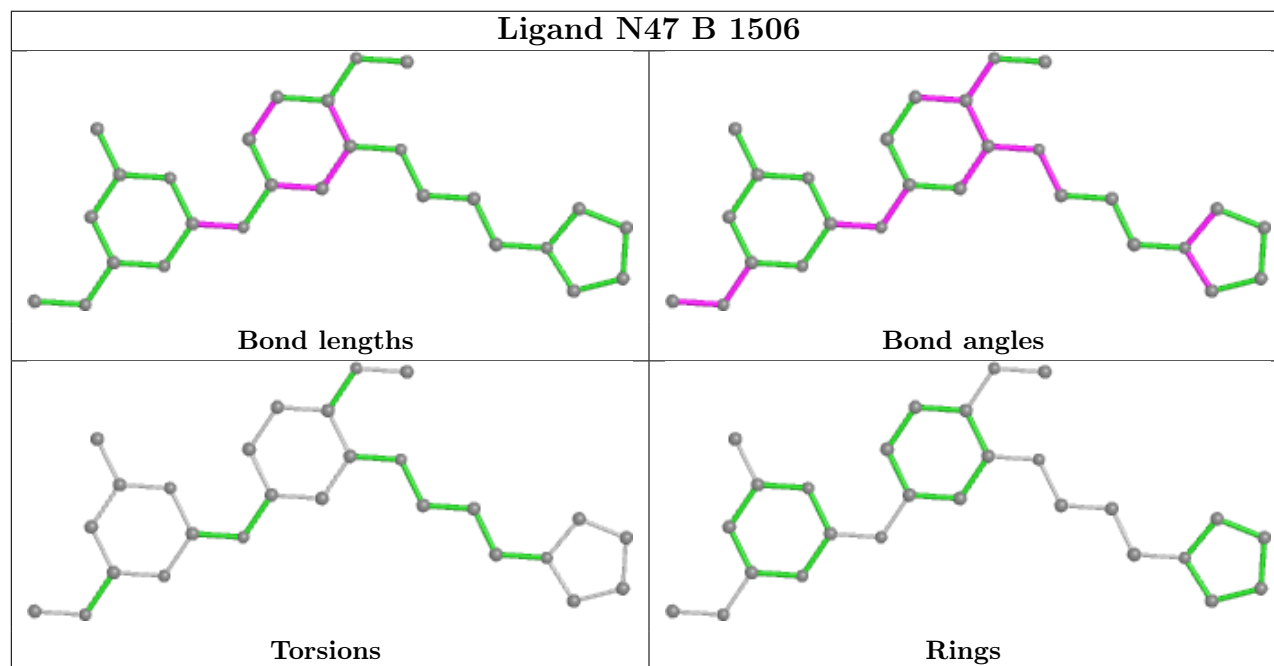
All (7) torsion outliers are listed below:

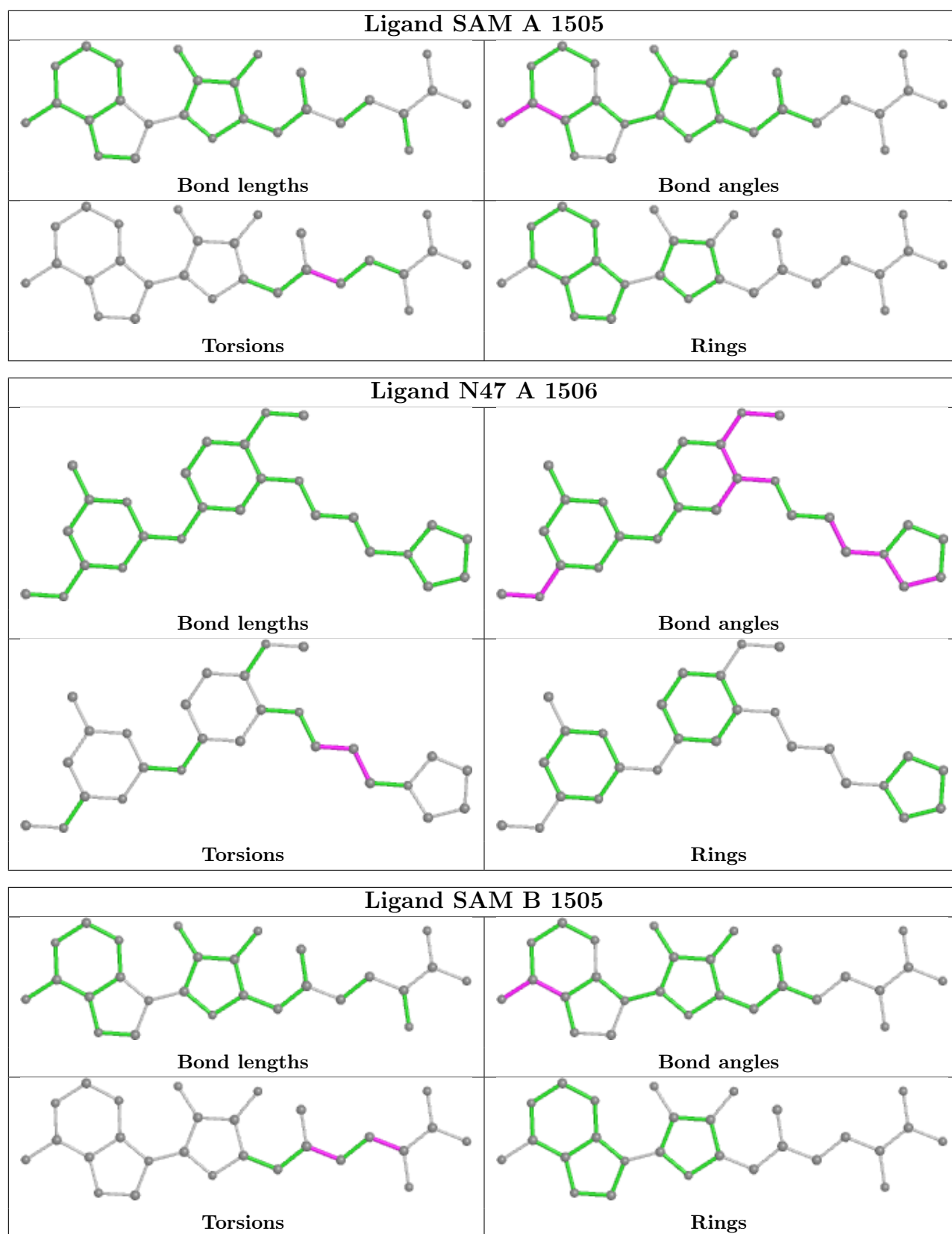
Mol	Chain	Res	Type	Atoms
3	A	1505	SAM	CB-CG-SD-CE
3	A	1505	SAM	CB-CG-SD-C5'
3	B	1505	SAM	CB-CG-SD-CE
3	B	1505	SAM	CB-CG-SD-C5'
4	A	1506	N47	O-C6-C7-C8
4	A	1506	N47	C6-C7-C8-N3
3	B	1505	SAM	C-CA-CB-CG

There are no ring outliers.

No monomer is involved in short contacts.

The following is a two-dimensional graphical depiction of Mogul quality analysis of bond lengths, bond angles, torsion angles, and ring geometry for all instances of the Ligand of Interest. In addition, ligands with molecular weight > 250 and outliers as shown on the validation Tables will also be included. For torsion angles, if less than 5% of the Mogul distribution of torsion angles is within 10 degrees of the torsion angle in question, then that torsion angle is considered an outlier. Any bond that is central to one or more torsion angles identified as an outlier by Mogul will be highlighted in the graph. For rings, the root-mean-square deviation (RMSD) between the ring in question and similar rings identified by Mogul is calculated over all ring torsion angles. If the average RMSD is greater than 60 degrees and the minimal RMSD between the ring in question and any Mogul-identified rings is also greater than 60 degrees, then that ring is considered an outlier. The outliers are highlighted in purple. The color gray indicates Mogul did not find sufficient equivalents in the CSD to analyse the geometry.





5.7 Other polymers [i](#)

There are no such residues in this entry.

5.8 Polymer linkage issues [i](#)

There are no chain breaks in this entry.

6 Fit of model and data [i](#)

6.1 Protein, DNA and RNA chains [i](#)

In the following table, the column labelled ‘#RSRZ > 2’ contains the number (and percentage) of RSRZ outliers, followed by percent RSRZ outliers for the chain as percentile scores relative to all X-ray entries and entries of similar resolution. The OWAB column contains the minimum, median, 95th percentile and maximum values of the occupancy-weighted average B-factor per residue. The column labelled ‘Q < 0.9’ lists the number of (and percentage) of residues with an average occupancy less than 0.9.

Mol	Chain	Analysed	<RSRZ>	#RSRZ>2	OWAB(Å ²)	Q<0.9
1	A	271/283 (95%)	-0.09	6 (2%) 62 60	21, 36, 65, 89	0
1	B	272/283 (96%)	-0.16	8 (2%) 51 50	20, 33, 60, 91	0
All	All	543/566 (95%)	-0.13	14 (2%) 56 54	20, 34, 64, 91	0

All (14) RSRZ outliers are listed below:

Mol	Chain	Res	Type	RSRZ
1	B	916	ILE	4.9
1	A	1009	ILE	4.1
1	A	920	LYS	3.8
1	A	918	THR	3.0
1	B	1189	LEU	2.7
1	A	1094	GLY	2.5
1	B	975	THR	2.4
1	A	1108	SER	2.3
1	B	977	VAL	2.2
1	B	1185	GLU	2.2
1	B	1009	ILE	2.0
1	B	918	THR	2.0
1	B	984	ASN	2.0
1	A	1111	ILE	2.0

6.2 Non-standard residues in protein, DNA, RNA chains [i](#)

There are no non-standard protein/DNA/RNA residues in this entry.

6.3 Carbohydrates [i](#)

There are no monosaccharides in this entry.

6.4 Ligands

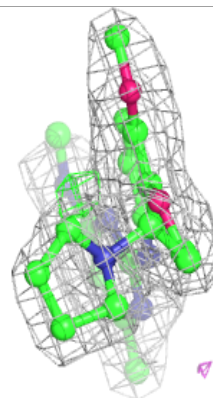
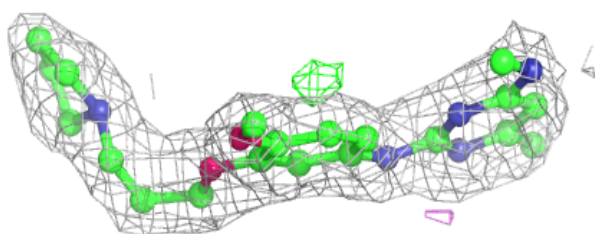
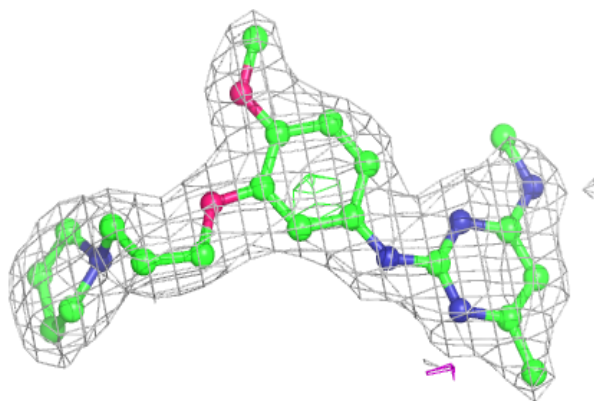
In the following table, the Atoms column lists the number of modelled atoms in the group and the number defined in the chemical component dictionary. The B-factors column lists the minimum, median, 95th percentile and maximum values of B factors of atoms in the group. The column labelled 'Q< 0.9' lists the number of atoms with occupancy less than 0.9.

Mol	Type	Chain	Res	Atoms	RSCC	RSR	B-factors(\AA^2)	Q<0.9
4	N47	A	1506	27/27	0.91	0.14	27,37,40,50	0
4	N47	B	1506	27/27	0.93	0.12	26,33,37,38	0
3	SAM	A	1505	27/27	0.96	0.09	24,30,32,36	0
3	SAM	B	1505	27/27	0.97	0.09	25,29,36,36	0
2	ZN	B	1503	1/1	0.98	0.03	37,37,37,37	0
2	ZN	B	1502	1/1	0.99	0.03	32,32,32,32	0
2	ZN	B	1501	1/1	0.99	0.03	32,32,32,32	0
2	ZN	A	1504	1/1	0.99	0.03	35,35,35,35	0
2	ZN	B	1504	1/1	0.99	0.02	32,32,32,32	0
2	ZN	A	1503	1/1	1.00	0.03	29,29,29,29	0
2	ZN	A	1501	1/1	1.00	0.03	26,26,26,26	0
2	ZN	A	1502	1/1	1.00	0.04	29,29,29,29	0

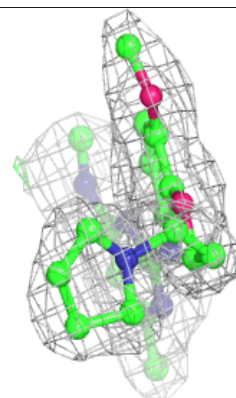
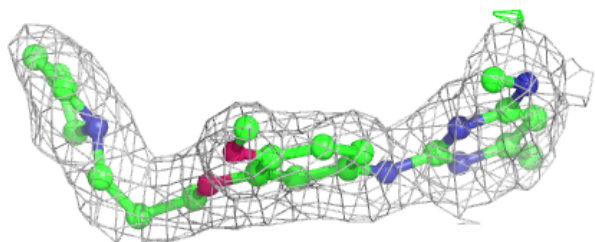
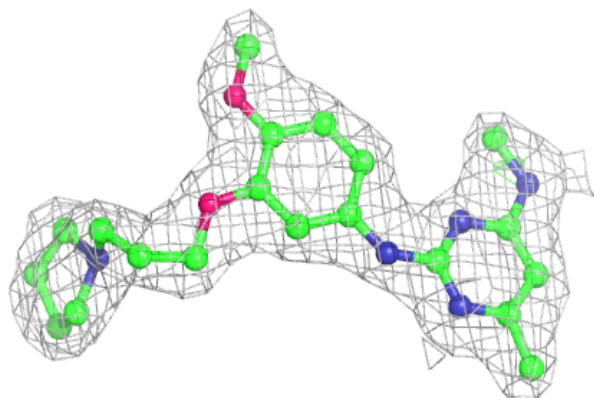
The following is a graphical depiction of the model fit to experimental electron density of all instances of the Ligand of Interest. In addition, ligands with molecular weight > 250 and outliers as shown on the geometry validation Tables will also be included. Each fit is shown from different orientation to approximate a three-dimensional view.

Electron density around N47 A 1506:

$2mF_o-DF_c$ (at 0.7 rmsd) in gray
 mF_o-DF_c (at 3 rmsd) in purple (negative)
and green (positive)

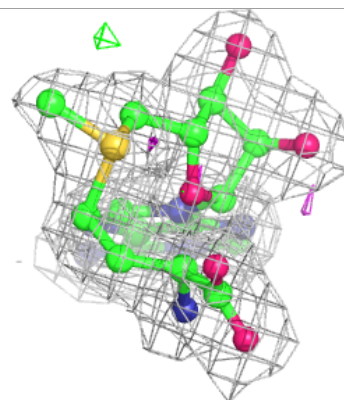
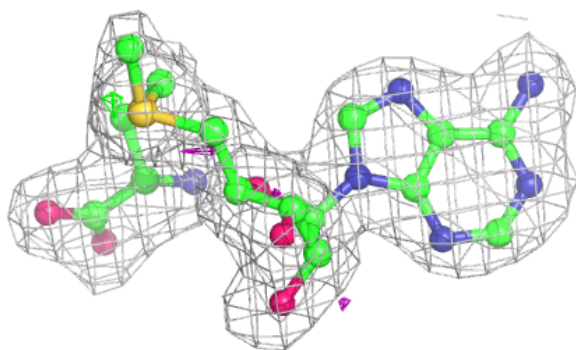
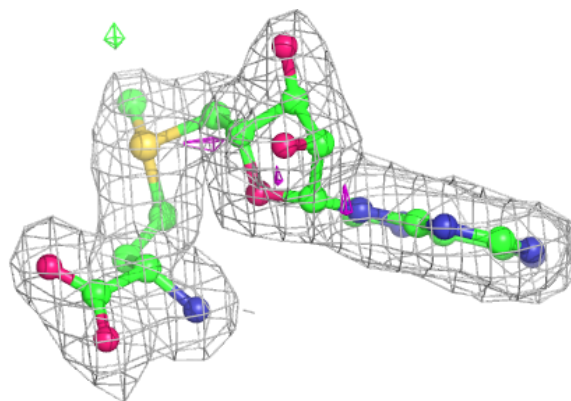
**Electron density around N47 B 1506:**

$2mF_o-DF_c$ (at 0.7 rmsd) in gray
 mF_o-DF_c (at 3 rmsd) in purple (negative)
and green (positive)

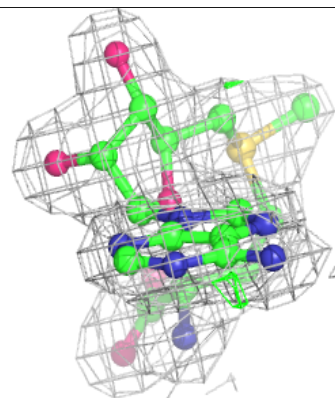
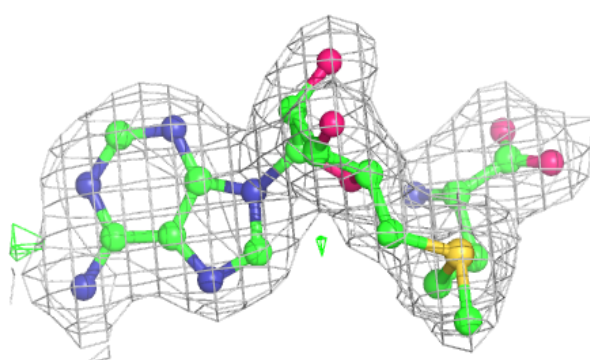
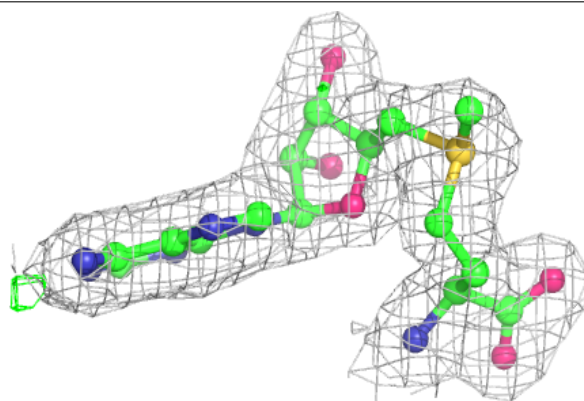


Electron density around SAM A 1505:

$2mF_o-DF_c$ (at 0.7 rmsd) in gray
 mF_o-DF_c (at 3 rmsd) in purple (negative)
and green (positive)

**Electron density around SAM B 1505:**

$2mF_o-DF_c$ (at 0.7 rmsd) in gray
 mF_o-DF_c (at 3 rmsd) in purple (negative)
and green (positive)



6.5 Other polymers [i](#)

There are no such residues in this entry.