



Full wwPDB X-ray Structure Validation Report ⓘ

May 14, 2020 – 11:28 am BST

PDB ID : 1BUX
Title : 3'-PHOSPHORYLATED NUCLEOTIDES BINDING TO NUCLEOSIDE
DIPHOSPHATE KINASE
Authors : Xu, Y.; Schneider, B.; Deville-Bonne, D.; Veron, M.; Janin, J.
Deposited on : 1998-09-07
Resolution : 2.80 Å(reported)

This is a Full wwPDB X-ray Structure Validation Report for a publicly released PDB entry.

We welcome your comments at validation@mail.wwpdb.org

A user guide is available at

<https://www.wwpdb.org/validation/2017/XrayValidationReportHelp>

with specific help available everywhere you see the ⓘ symbol.

The following versions of software and data (see [references ⓘ](#)) were used in the production of this report:

MolProbity : 4.02b-467
Mogul : 1.8.5 (274361), CSD as541be (2020)
Xtriage (Phenix) : **NOT EXECUTED**
EDS : **NOT EXECUTED**
buster-report : 1.1.7 (2018)
Percentile statistics : 20191225.v01 (using entries in the PDB archive December 25th 2019)
Ideal geometry (proteins) : Engh & Huber (2001)
Ideal geometry (DNA, RNA) : Parkinson et al. (1996)
Validation Pipeline (wwPDB-VP) : 2.11

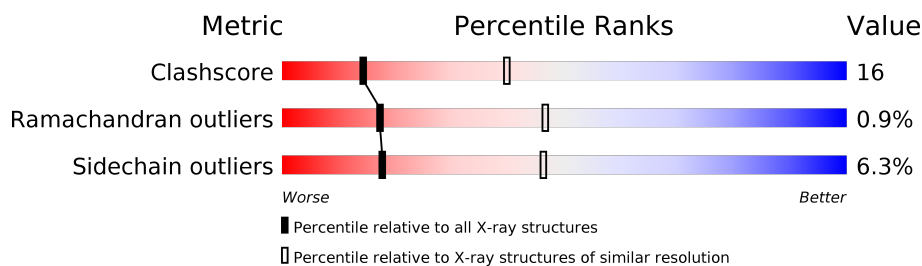
1 Overall quality at a glance

The following experimental techniques were used to determine the structure:

X-RAY DIFFRACTION

The reported resolution of this entry is 2.80 Å.

Percentile scores (ranging between 0-100) for global validation metrics of the entry are shown in the following graphic. The table shows the number of entries on which the scores are based.



Metric	Whole archive (#Entries)	Similar resolution (#Entries, resolution range(Å))
Clashscore	141614	3569 (2.80-2.80)
Ramachandran outliers	138981	3498 (2.80-2.80)
Sidechain outliers	138945	3500 (2.80-2.80)

The table below summarises the geometric issues observed across the polymeric chains and their fit to the electron density. The red, orange, yellow and green segments on the lower bar indicate the fraction of residues that contain outliers for ≥ 3 , 2, 1 and 0 types of geometric quality criteria respectively. A grey segment represents the fraction of residues that are not modelled. The numeric value for each fraction is indicated below the corresponding segment, with a dot representing fractions $\leq 5\%$.

Note EDS was not executed.

Mol	Chain	Length	Quality of chain
1	A	155	
1	B	155	
1	C	155	

2 Entry composition [i](#)

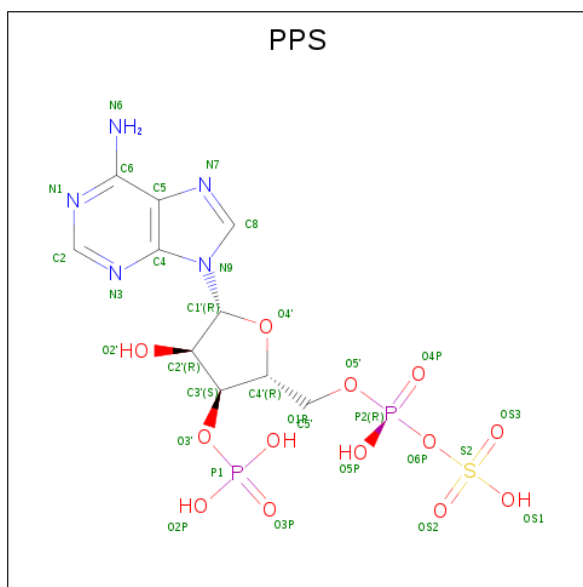
There are 2 unique types of molecules in this entry. The entry contains 3532 atoms, of which 0 are hydrogens and 0 are deuteriums.

In the tables below, the ZeroOcc column contains the number of atoms modelled with zero occupancy, the AltConf column contains the number of residues with at least one atom in alternate conformation and the Trace column contains the number of residues modelled with at most 2 atoms.

- Molecule 1 is a protein called NUCLEOSIDE DIPHOSPHATE KINASE.

Mol	Chain	Residues	Atoms					ZeroOcc	AltConf	Trace
1	A	150	Total	C	N	O	S	7	0	0
			1147	736	198	211	2			
1	B	150	Total	C	N	O	S	7	0	0
			1147	736	198	211	2			
1	C	150	Total	C	N	O	S	7	0	0
			1147	736	198	211	2			

- Molecule 2 is 3'-PHOSPHATE-ADENOSINE-5'-PHOSPHATE SULFATE (three-letter code: PPS) (formula: C₁₀H₁₅N₅O₁₃P₂S).



Mol	Chain	Residues	Atoms					ZeroOcc	AltConf
2	A	1	Total	C	N	O	P S	0	1
			37	10	5	18	2 2		
2	B	1	Total	C	N	O	P	0	0
			27	10	5	10	2		
2	C	1	Total	C	N	O	P	0	0
			27	10	5	10	2		

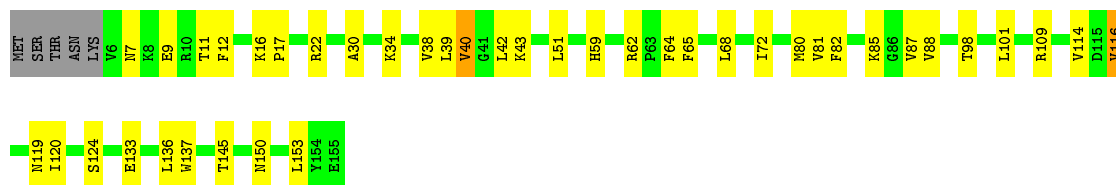
3 Residue-property plots [i](#)

These plots are drawn for all protein, RNA and DNA chains in the entry. The first graphic for a chain summarises the proportions of the various outlier classes displayed in the second graphic. The second graphic shows the sequence view annotated by issues in geometry. Residues are color-coded according to the number of geometric quality criteria for which they contain at least one outlier: green = 0, yellow = 1, orange = 2 and red = 3 or more. Stretches of 2 or more consecutive residues without any outlier are shown as a green connector. Residues present in the sample, but not in the model, are shown in grey.

Note EDS was not executed.

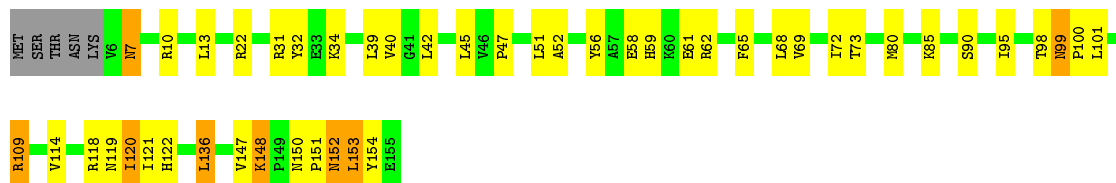
• Molecule 1: NUCLEOSIDE DIPHOSPHATE KINASE

Chain A: 



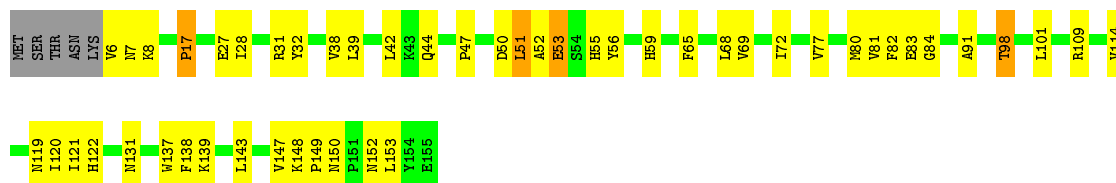
• Molecule 1: NUCLEOSIDE DIPHOSPHATE KINASE

Chain B: 



• Molecule 1: NUCLEOSIDE DIPHOSPHATE KINASE

Chain C: 



4 Data and refinement statistics

Xtriage (Phenix) and EDS were not executed - this section is therefore incomplete.

Property	Value	Source
Space group	P 31 2 1	Depositor
Cell constants a, b, c, α , β , γ	71.50 Å 71.50 Å 153.90 Å 90.00° 90.00° 120.00°	Depositor
Resolution (Å)	10.00 – 2.80	Depositor
% Data completeness (in resolution range)	89.5 (10.00-2.80)	Depositor
R_{merge}	0.07	Depositor
R_{sym}	(Not available)	Depositor
Refinement program	X-PLOR	Depositor
R, R_{free}	0.204 , 0.312	Depositor
Estimated twinning fraction	No twinning to report.	Xtriage
Total number of atoms	3532	wwPDB-VP
Average B, all atoms (Å ²)	31.0	wwPDB-VP

5 Model quality

5.1 Standard geometry

Bond lengths and bond angles in the following residue types are not validated in this section: PPS

The Z score for a bond length (or angle) is the number of standard deviations the observed value is removed from the expected value. A bond length (or angle) with $|Z| > 5$ is considered an outlier worth inspection. RMSZ is the root-mean-square of all Z scores of the bond lengths (or angles).

Mol	Chain	Bond lengths		Bond angles	
		RMSZ	$\# Z > 5$	RMSZ	$\# Z > 5$
1	A	0.60	0/1171	0.79	0/1583
1	B	0.60	0/1171	0.78	1/1583 (0.1%)
1	C	0.66	0/1171	0.79	1/1583 (0.1%)
All	All	0.62	0/3513	0.78	2/4749 (0.0%)

Chiral center outliers are detected by calculating the chiral volume of a chiral center and verifying if the center is modelled as a planar moiety or with the opposite hand. A planarity outlier is detected by checking planarity of atoms in a peptide group, atoms in a mainchain group or atoms of a sidechain that are expected to be planar.

Mol	Chain	#Chirality outliers	#Planarity outliers
1	B	0	1

There are no bond length outliers.

All (2) bond angle outliers are listed below:

Mol	Chain	Res	Type	Atoms	Z	Observed(°)	Ideal(°)
1	B	120	ILE	N-CA-C	5.69	126.36	111.00
1	C	120	ILE	N-CA-C	5.39	125.55	111.00

There are no chirality outliers.

All (1) planarity outliers are listed below:

Mol	Chain	Res	Type	Group
1	B	32	TYR	Sidechain

5.2 Too-close contacts ⓘ

In the following table, the Non-H and H(model) columns list the number of non-hydrogen atoms and hydrogen atoms in the chain respectively. The H(added) column lists the number of hydrogen atoms added and optimized by MolProbity. The Clashes column lists the number of clashes within the asymmetric unit, whereas Symm-Clashes lists symmetry related clashes.

Mol	Chain	Non-H	H(model)	H(added)	Clashes	Symm-Clashes
1	A	1147	0	1167	33	0
1	B	1147	0	1167	42	0
1	C	1147	0	1167	39	0
2	A	37	0	1	0	0
2	B	27	0	11	2	0
2	C	27	0	11	3	0
All	All	3532	0	3524	107	0

The all-atom clashscore is defined as the number of clashes found per 1000 atoms (including hydrogen atoms). The all-atom clashscore for this structure is 16.

All (107) close contacts within the same asymmetric unit are listed below, sorted by their clash magnitude.

Atom-1	Atom-2	Interatomic distance (Å)	Clash overlap (Å)
1:C:53:GLU:HG3	1:C:65:PHE:HZ	1.38	0.87
1:C:150:ASN:HB3	1:C:153:LEU:HD13	1.60	0.82
1:A:150:ASN:HB3	1:A:153:LEU:HD13	1.65	0.76
1:A:109:ARG:HD3	1:A:119:ASN:HB2	1.70	0.74
1:B:99:ASN:HD22	1:B:101:LEU:H	1.37	0.72
1:C:42:LEU:HD12	1:C:80:MET:HB3	1.75	0.68
1:B:150:ASN:HD21	1:B:152:ASN:HB2	1.61	0.65
1:C:53:GLU:HG3	1:C:65:PHE:CZ	2.27	0.62
1:B:99:ASN:ND2	1:B:101:LEU:H	1.96	0.62
1:A:59:HIS:O	1:A:65:PHE:HB2	2.00	0.62
1:C:109:ARG:HD3	1:C:119:ASN:HB2	1.80	0.62
1:A:39:LEU:HD21	1:A:42:LEU:HD22	1.83	0.61
1:B:47:PRO:HB2	1:B:73:THR:HG22	1.81	0.61
1:B:147:VAL:HA	1:B:148:LYS:HE3	1.84	0.60
1:A:51:LEU:HD12	1:A:136:LEU:CD2	2.33	0.59
1:A:85:LYS:HE2	1:C:101:LEU:HD11	1.84	0.59
1:C:39:LEU:HD13	1:C:82:PHE:CZ	2.38	0.58
1:B:59:HIS:CE1	2:B:160:PPS:H5'1	2.38	0.58
1:C:131:ASN:HD22	1:C:131:ASN:N	2.02	0.58
1:C:52:ALA:HB3	1:C:69:VAL:HG13	1.86	0.57
1:A:62:ARG:HH21	1:A:64:PHE:HZ	1.51	0.57

Continued on next page...

Continued from previous page...

Atom-1	Atom-2	Interatomic distance (Å)	Clash overlap (Å)
1:C:98:THR:HG21	2:C:160:PPS:O5P	2.04	0.57
1:A:133:GLU:O	1:A:137:TRP:HD1	1.88	0.56
1:B:52:ALA:HB3	1:B:69:VAL:HG13	1.87	0.56
1:B:99:ASN:HD21	1:B:101:LEU:HD12	1.71	0.56
1:B:39:LEU:HD21	1:B:42:LEU:HD22	1.88	0.56
1:B:109:ARG:HD3	1:B:119:ASN:O	2.06	0.56
1:A:40:VAL:HG12	1:A:81:VAL:HB	1.88	0.55
1:B:118:ARG:HG2	1:B:118:ARG:NH1	2.22	0.55
1:A:30:ALA:O	1:A:34:LYS:HG3	2.06	0.55
1:A:38:VAL:HG12	1:A:39:LEU:O	2.08	0.54
1:B:10:ARG:CZ	1:B:40:VAL:HG11	2.38	0.54
1:A:11:THR:HG23	1:A:124:SER:HB2	1.90	0.53
1:B:118:ARG:HG2	1:B:118:ARG:HH11	1.72	0.53
1:A:9:GLU:HG2	1:A:87:VAL:HG12	1.91	0.53
1:A:16:LYS:HB3	1:A:17:PRO:CD	2.38	0.53
1:B:147:VAL:CA	1:B:148:LYS:HE3	2.40	0.52
1:A:22:ARG:HG2	1:B:150:ASN:ND2	2.24	0.52
1:C:56:TYR:CD2	1:C:68:LEU:HB3	2.44	0.52
1:B:22:ARG:HD2	1:C:153:LEU:HD12	1.91	0.51
1:A:11:THR:OG1	1:A:87:VAL:HG13	2.11	0.51
1:A:22:ARG:HG2	1:B:150:ASN:HD21	1.76	0.51
1:C:147:VAL:HG12	1:C:149:PRO:HD3	1.93	0.50
1:C:81:VAL:HG23	1:C:138:PHE:CE2	2.46	0.50
1:C:51:LEU:HD12	1:C:51:LEU:O	2.12	0.50
1:A:39:LEU:HD13	1:A:82:PHE:CZ	2.47	0.50
1:B:109:ARG:NH1	1:B:121:ILE:O	2.45	0.50
1:B:58:GLU:H	1:B:58:GLU:CD	2.14	0.49
1:B:95:ILE:O	1:B:109:ARG:HG3	2.12	0.49
1:B:51:LEU:CD1	1:B:136:LEU:HD22	2.44	0.48
1:B:47:PRO:O	1:B:73:THR:HG22	2.14	0.48
1:C:83:GLU:HG2	1:C:84:GLY:N	2.29	0.48
1:C:32:TYR:HE1	1:C:91:ALA:HA	1.79	0.48
1:A:101:LEU:HD21	1:A:114:VAL:HG23	1.96	0.47
1:B:151:PRO:HG2	1:B:152:ASN:OD1	2.15	0.47
1:B:150:ASN:O	1:B:153:LEU:HB2	2.14	0.47
1:C:59:HIS:O	1:C:65:PHE:HB2	2.14	0.47
1:A:109:ARG:CD	1:A:119:ASN:HB2	2.41	0.47
1:A:80:MET:SD	1:A:82:PHE:HE2	2.38	0.47
1:A:16:LYS:HB3	1:A:17:PRO:HD2	1.96	0.46
1:C:68:LEU:HD11	2:C:160:PPS:H1'	1.97	0.46
1:A:85:LYS:HE2	1:C:101:LEU:CD1	2.43	0.46

Continued on next page...

Continued from previous page...

Atom-1	Atom-2	Interatomic distance (Å)	Clash overlap (Å)
1:C:131:ASN:ND2	1:C:131:ASN:N	2.64	0.46
1:B:45:LEU:N	1:B:45:LEU:HD23	2.31	0.46
1:C:55:HIS:CD2	1:C:56:TYR:CE1	3.03	0.46
1:C:138:PHE:HB3	1:C:143:LEU:HD21	1.98	0.46
1:B:47:PRO:C	1:B:73:THR:HG22	2.36	0.45
1:B:45:LEU:H	1:B:45:LEU:HD23	1.82	0.45
1:C:17:PRO:HD3	1:C:77:VAL:HG22	1.99	0.45
1:B:98:THR:HG23	2:B:160:PPS:O2'	2.17	0.45
1:C:72:ILE:O	1:C:72:ILE:HG12	2.17	0.44
1:C:65:PHE:CD1	1:C:65:PHE:C	2.91	0.44
1:B:31:ARG:HA	1:B:34:LYS:HE2	1.99	0.44
1:B:56:TYR:HB3	1:B:65:PHE:HE1	1.82	0.44
1:A:11:THR:HG22	1:A:12:PHE:N	2.33	0.43
1:A:68:LEU:O	1:A:72:ILE:HG22	2.19	0.43
1:B:13:LEU:HB2	1:B:80:MET:HG3	1.99	0.43
1:B:56:TYR:HB3	1:B:65:PHE:CE1	2.53	0.43
1:B:56:TYR:CE1	1:B:68:LEU:HD13	2.53	0.43
1:C:150:ASN:O	1:C:153:LEU:HB2	2.18	0.43
1:C:28:ILE:HG21	1:C:121:ILE:HD12	1.99	0.43
1:B:121:ILE:HG12	1:B:122:HIS:N	2.34	0.43
1:A:39:LEU:HA	1:A:39:LEU:HD12	1.93	0.42
1:B:98:THR:O	1:B:100:PRO:HD3	2.20	0.42
1:C:148:LYS:O	1:C:148:LYS:HG3	2.19	0.42
1:A:11:THR:OG1	1:A:88:VAL:HG22	2.19	0.42
1:C:138:PHE:CB	1:C:143:LEU:HD21	2.49	0.42
1:A:85:LYS:O	1:C:101:LEU:HD21	2.20	0.42
1:A:9:GLU:OE2	1:A:88:VAL:HG23	2.20	0.42
1:C:47:PRO:HG3	1:C:137:TRP:CZ3	2.55	0.42
1:A:98:THR:HG22	1:A:116:VAL:CG1	2.51	0.41
1:A:42:LEU:HD12	1:A:43:LYS:H	1.84	0.41
1:B:109:ARG:CD	1:B:119:ASN:HB2	2.50	0.41
1:B:59:HIS:HA	1:B:62:ARG:HG3	2.01	0.41
1:A:22:ARG:CG	1:B:150:ASN:HD21	2.32	0.41
1:C:27:GLU:O	1:C:31:ARG:HG3	2.21	0.41
1:B:85:LYS:HB2	1:B:154:TYR:HE1	1.85	0.41
1:C:131:ASN:H	1:C:131:ASN:ND2	2.19	0.41
1:C:68:LEU:HA	1:C:68:LEU:HD23	1.65	0.41
1:B:99:ASN:HD22	1:B:101:LEU:N	2.12	0.41
1:C:6:VAL:C	1:C:8:LYS:H	2.24	0.41
1:B:51:LEU:HD12	1:B:136:LEU:HD22	2.02	0.41
1:C:150:ASN:OD1	1:C:152:ASN:HB2	2.20	0.40

Continued on next page...

Continued from previous page...

Atom-1	Atom-2	Interatomic distance (Å)	Clash overlap (Å)
1:C:38:VAL:HG11	1:C:147:VAL:HG13	2.03	0.40
1:C:122:HIS:ND1	2:C:160:PPS:O3P	2.54	0.40
1:B:150:ASN:HD22	1:B:153:LEU:HD13	1.86	0.40

There are no symmetry-related clashes.

5.3 Torsion angles [i](#)

5.3.1 Protein backbone [i](#)

In the following table, the Percentiles column shows the percent Ramachandran outliers of the chain as a percentile score with respect to all X-ray entries followed by that with respect to entries of similar resolution.

The Analysed column shows the number of residues for which the backbone conformation was analysed, and the total number of residues.

Mol	Chain	Analysed	Favoured	Allowed	Outliers	Percentiles	
1	A	148/155 (96%)	139 (94%)	8 (5%)	1 (1%)	22	53
1	B	148/155 (96%)	134 (90%)	12 (8%)	2 (1%)	11	34
1	C	148/155 (96%)	139 (94%)	8 (5%)	1 (1%)	22	53
All	All	444/465 (96%)	412 (93%)	28 (6%)	4 (1%)	17	46

All (4) Ramachandran outliers are listed below:

Mol	Chain	Res	Type
1	B	7	ASN
1	C	7	ASN
1	B	120	ILE
1	A	120	ILE

5.3.2 Protein sidechains [i](#)

In the following table, the Percentiles column shows the percent sidechain outliers of the chain as a percentile score with respect to all X-ray entries followed by that with respect to entries of similar resolution.

The Analysed column shows the number of residues for which the sidechain conformation was analysed, and the total number of residues.

Mol	Chain	Analysed	Rotameric	Outliers	Percentiles	
1	A	122/127 (96%)	118 (97%)	4 (3%)	38	72
1	B	122/127 (96%)	111 (91%)	11 (9%)	9	28
1	C	122/127 (96%)	114 (93%)	8 (7%)	16	44
All	All	366/381 (96%)	343 (94%)	23 (6%)	18	46

All (23) residues with a non-rotameric sidechain are listed below:

Mol	Chain	Res	Type
1	A	7	ASN
1	A	40	VAL
1	A	116	VAL
1	A	145	THR
1	B	7	ASN
1	B	61	GLU
1	B	72	ILE
1	B	90	SER
1	B	99	ASN
1	B	109	ARG
1	B	114	VAL
1	B	136	LEU
1	B	148	LYS
1	B	152	ASN
1	B	153	LEU
1	C	17	PRO
1	C	44	GLN
1	C	50	ASP
1	C	51	LEU
1	C	53	GLU
1	C	98	THR
1	C	114	VAL
1	C	139	LYS

Some sidechains can be flipped to improve hydrogen bonding and reduce clashes. All (6) such sidechains are listed below:

Mol	Chain	Res	Type
1	A	44	GLN
1	A	131	ASN
1	B	59	HIS
1	B	99	ASN
1	C	55	HIS
1	C	131	ASN

5.3.3 RNA ⓘ

There are no RNA molecules in this entry.

5.4 Non-standard residues in protein, DNA, RNA chains ⓘ

There are no non-standard protein/DNA/RNA residues in this entry.

5.5 Carbohydrates ⓘ

There are no carbohydrates in this entry.

5.6 Ligand geometry ⓘ

4 ligands are modelled in this entry.

In the following table, the Counts columns list the number of bonds (or angles) for which Mogul statistics could be retrieved, the number of bonds (or angles) that are observed in the model and the number of bonds (or angles) that are defined in the Chemical Component Dictionary. The Link column lists molecule types, if any, to which the group is linked. The Z score for a bond length (or angle) is the number of standard deviations the observed value is removed from the expected value. A bond length (or angle) with $|Z| > 2$ is considered an outlier worth inspection. RMSZ is the root-mean-square of all Z scores of the bond lengths (or angles).

Mol	Type	Chain	Res	Link	Bond lengths			Bond angles		
					Counts	RMSZ	# $ Z > 2$	Counts	RMSZ	# $ Z > 2$
2	PPS	C	160	-	26,29,33	1.47	4 (15%)	31,45,52	1.38	5 (16%)
2	PPS	B	160	-	26,29,33	1.25	3 (11%)	31,45,52	1.45	7 (22%)
2	PPS	A	160[B]	-	29,33,33	1.38	5 (17%)	32,52,52	1.81	9 (28%)
2	PPS	A	160[A]	-	29,33,33	1.49	5 (17%)	32,52,52	1.58	8 (25%)

In the following table, the Chirals column lists the number of chiral outliers, the number of chiral centers analysed, the number of these observed in the model and the number defined in the Chemical Component Dictionary. Similar counts are reported in the Torsion and Rings columns. '-' means no outliers of that kind were identified.

Mol	Type	Chain	Res	Link	Chirals	Torsions	Rings
2	PPS	C	160	-	-	5/11/31/37	0/3/3/3
2	PPS	B	160	-	-	2/11/31/37	0/3/3/3
2	PPS	A	160[B]	-	-	3/11/37/37	0/3/3/3
2	PPS	A	160[A]	-	-	4/11/37/37	0/3/3/3

All (17) bond length outliers are listed below:

Mol	Chain	Res	Type	Atoms	Z	Observed(Å)	Ideal(Å)
2	C	160	PPS	C2'-C1'	-3.74	1.48	1.53
2	A	160[A]	PPS	P2-O6P	3.72	1.62	1.59
2	A	160[B]	PPS	O4'-C1'	3.45	1.45	1.41
2	A	160[A]	PPS	O4'-C1'	3.45	1.45	1.41
2	C	160	PPS	C3'-C4'	2.81	1.60	1.52
2	B	160	PPS	C4-N3	-2.74	1.31	1.35
2	B	160	PPS	C2'-C3'	-2.71	1.46	1.52
2	C	160	PPS	O4'-C1'	2.63	1.44	1.41
2	A	160[B]	PPS	C8-N7	-2.47	1.30	1.34
2	A	160[A]	PPS	C8-N7	-2.47	1.30	1.34
2	A	160[B]	PPS	O5'-C5'	-2.35	1.35	1.44
2	A	160[A]	PPS	O5'-C5'	-2.35	1.35	1.44
2	B	160	PPS	P2-O5P	2.25	1.63	1.54
2	A	160[B]	PPS	P2-O6P	2.18	1.60	1.59
2	C	160	PPS	C8-N7	-2.17	1.30	1.34
2	A	160[B]	PPS	C5'-C4'	-2.05	1.45	1.51
2	A	160[A]	PPS	C5'-C4'	-2.05	1.45	1.51

All (29) bond angle outliers are listed below:

Mol	Chain	Res	Type	Atoms	Z	Observed(°)	Ideal(°)
2	A	160[B]	PPS	O5P-P2-O4P	-5.17	86.67	112.24
2	C	160	PPS	P2-O5'-C5'	3.75	128.63	118.30
2	C	160	PPS	C1'-N9-C4	-3.50	120.49	126.64
2	A	160[B]	PPS	C5-C6-N1	-3.45	112.52	120.35
2	A	160[A]	PPS	C5-C6-N1	-3.45	112.52	120.35
2	B	160	PPS	C5-C6-N6	3.12	125.09	120.35
2	A	160[B]	PPS	C2'-C3'-C4'	-2.90	98.09	103.22
2	A	160[A]	PPS	C2'-C3'-C4'	-2.90	98.09	103.22
2	A	160[B]	PPS	N3-C2-N1	2.69	132.88	128.68
2	A	160[A]	PPS	N3-C2-N1	2.69	132.88	128.68
2	B	160	PPS	O2'-C2'-C1'	2.63	120.58	110.85
2	A	160[B]	PPS	O4'-C1'-C2'	-2.56	103.19	106.93
2	A	160[A]	PPS	O4'-C1'-C2'	-2.56	103.19	106.93
2	A	160[B]	PPS	O2P-P1-O1P	2.51	117.24	107.64
2	A	160[A]	PPS	O2P-P1-O1P	2.51	117.24	107.64
2	A	160[B]	PPS	O4'-C4'-C5'	-2.47	101.23	109.37
2	A	160[A]	PPS	O4'-C4'-C5'	-2.47	101.23	109.37
2	A	160[B]	PPS	C5-C6-N6	2.37	123.96	120.35
2	A	160[A]	PPS	C5-C6-N6	2.37	123.96	120.35
2	C	160	PPS	O6P-P2-O4P	2.35	119.87	110.68
2	B	160	PPS	O3'-P1-O3P	-2.34	100.36	109.39

Continued on next page...

Continued from previous page...

Mol	Chain	Res	Type	Atoms	Z	Observed($^{\circ}$)	Ideal($^{\circ}$)
2	C	160	PPS	O5P-P2-O5'	-2.29	100.63	106.73
2	A	160[B]	PPS	N6-C6-N1	2.29	123.32	118.57
2	A	160[A]	PPS	N6-C6-N1	2.29	123.32	118.57
2	B	160	PPS	O5P-P2-O5'	-2.18	100.93	106.73
2	B	160	PPS	O2P-P1-O1P	2.13	115.78	107.64
2	B	160	PPS	O6P-P2-O4P	2.08	118.83	110.68
2	C	160	PPS	O3'-C3'-C4'	2.07	117.58	110.08
2	B	160	PPS	O3'-C3'-C4'	-2.05	102.68	110.08

There are no chirality outliers.

All (14) torsion outliers are listed below:

Mol	Chain	Res	Type	Atoms
2	C	160	PPS	C5'-O5'-P2-O6P
2	C	160	PPS	C5'-O5'-P2-O5P
2	A	160[B]	PPS	C5'-O5'-P2-O6P
2	B	160	PPS	C3'-O3'-P1-O3P
2	A	160[B]	PPS	C5'-O5'-P2-O5P
2	A	160[A]	PPS	C5'-O5'-P2-O4P
2	A	160[A]	PPS	C5'-O5'-P2-O5P
2	A	160[A]	PPS	C5'-O5'-P2-O6P
2	B	160	PPS	C5'-O5'-P2-O4P
2	A	160[B]	PPS	O4'-C4'-C5'-O5'
2	A	160[A]	PPS	O4'-C4'-C5'-O5'
2	C	160	PPS	C4'-C3'-O3'-P1
2	C	160	PPS	O4'-C4'-C5'-O5'
2	C	160	PPS	C5'-O5'-P2-O4P

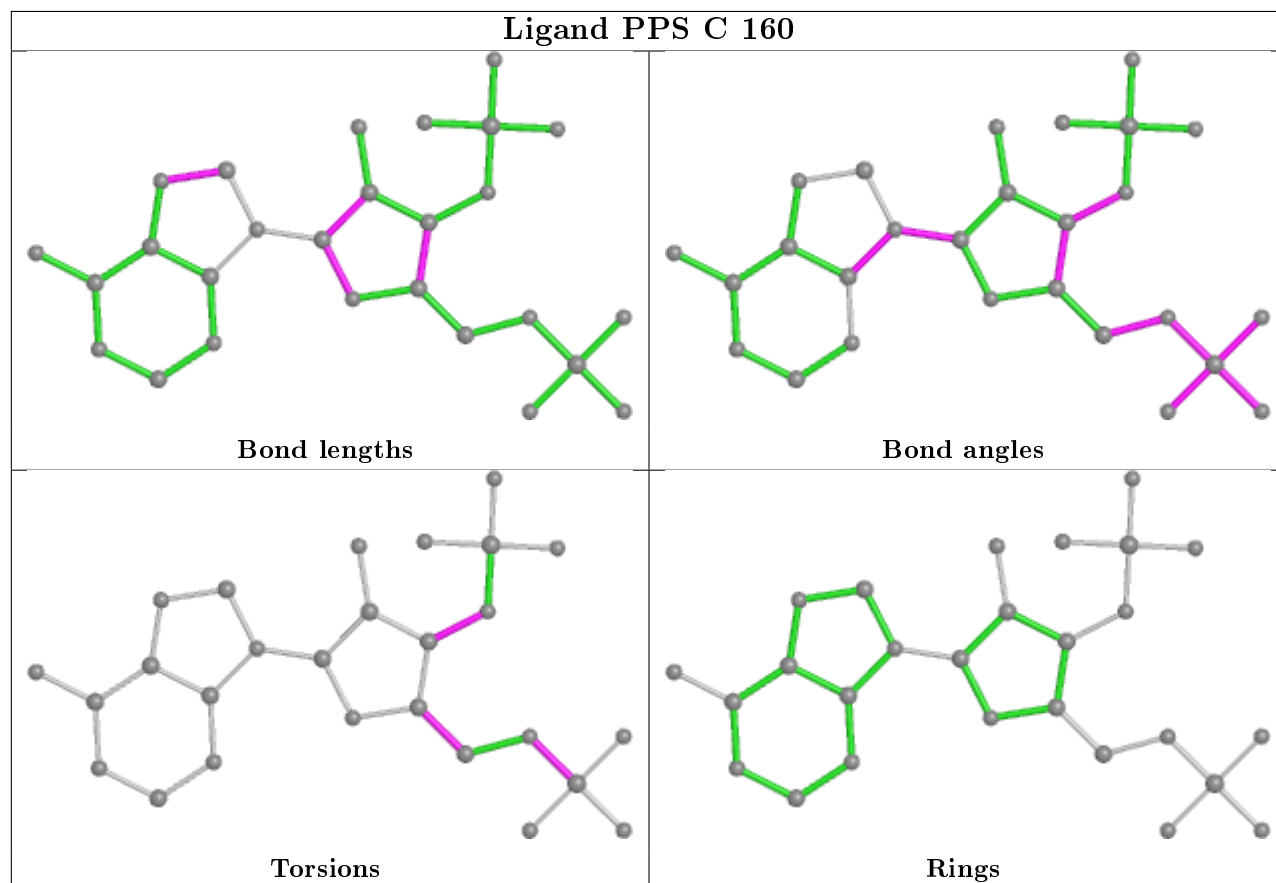
There are no ring outliers.

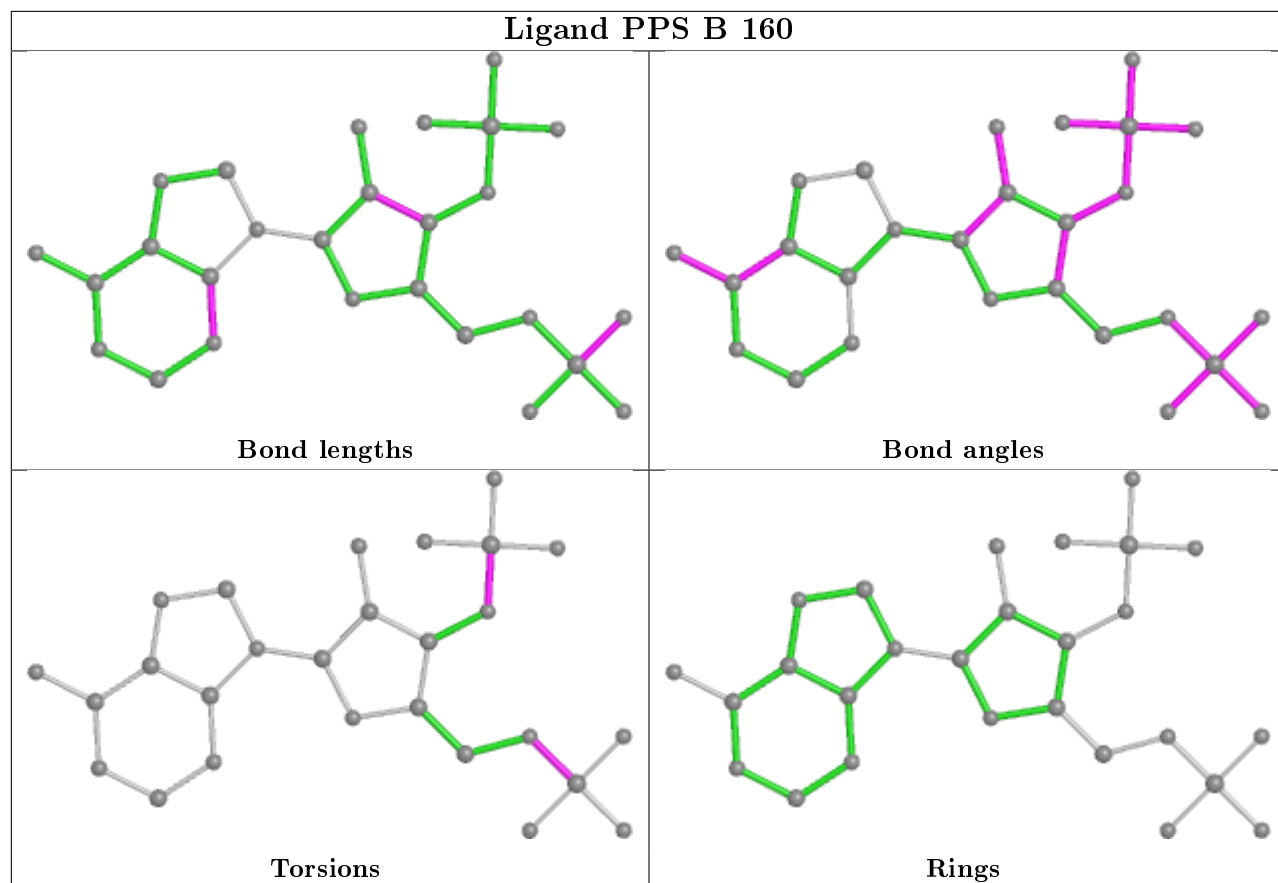
2 monomers are involved in 5 short contacts:

Mol	Chain	Res	Type	Clashes	Symm-Clashes
2	C	160	PPS	3	0
2	B	160	PPS	2	0

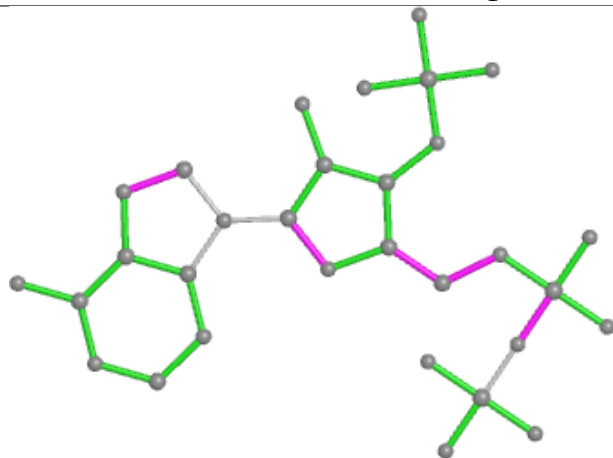
The following is a two-dimensional graphical depiction of Mogul quality analysis of bond lengths, bond angles, torsion angles, and ring geometry for all instances of the Ligand of Interest. In addition, ligands with molecular weight > 250 and outliers as shown on the validation Tables will also be included. For torsion angles, if less than 5% of the Mogul distribution of torsion angles is within 10 degrees of the torsion angle in question, then that torsion angle is considered an outlier. Any bond that is central to one or more torsion angles identified as an outlier by Mogul will be highlighted in the graph. For rings, the root-mean-square deviation (RMSD) between the ring

in question and similar rings identified by Mogul is calculated over all ring torsion angles. If the average RMSD is greater than 60 degrees and the minimal RMSD between the ring in question and any Mogul-identified rings is also greater than 60 degrees, then that ring is considered an outlier. The outliers are highlighted in purple. The color gray indicates Mogul did not find sufficient equivalents in the CSD to analyse the geometry.

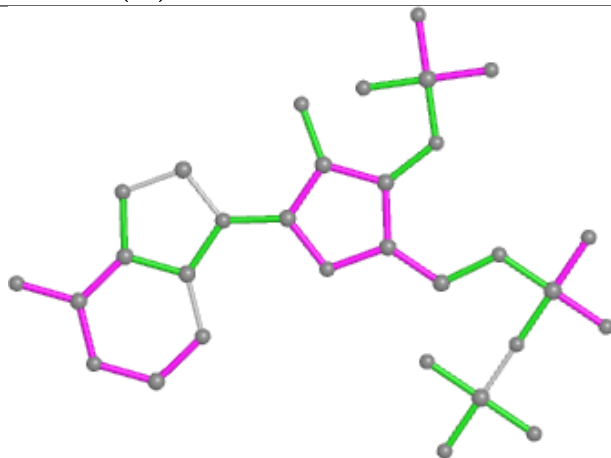




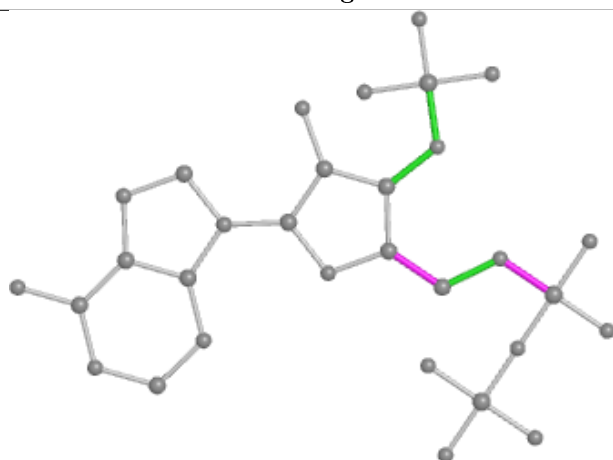
Ligand PPS A 160 (B)



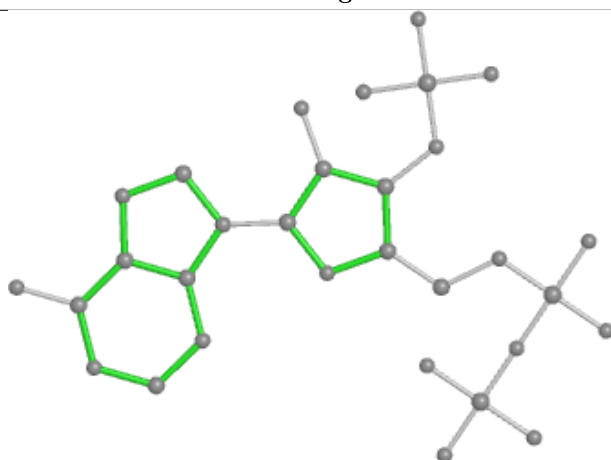
Bond lengths



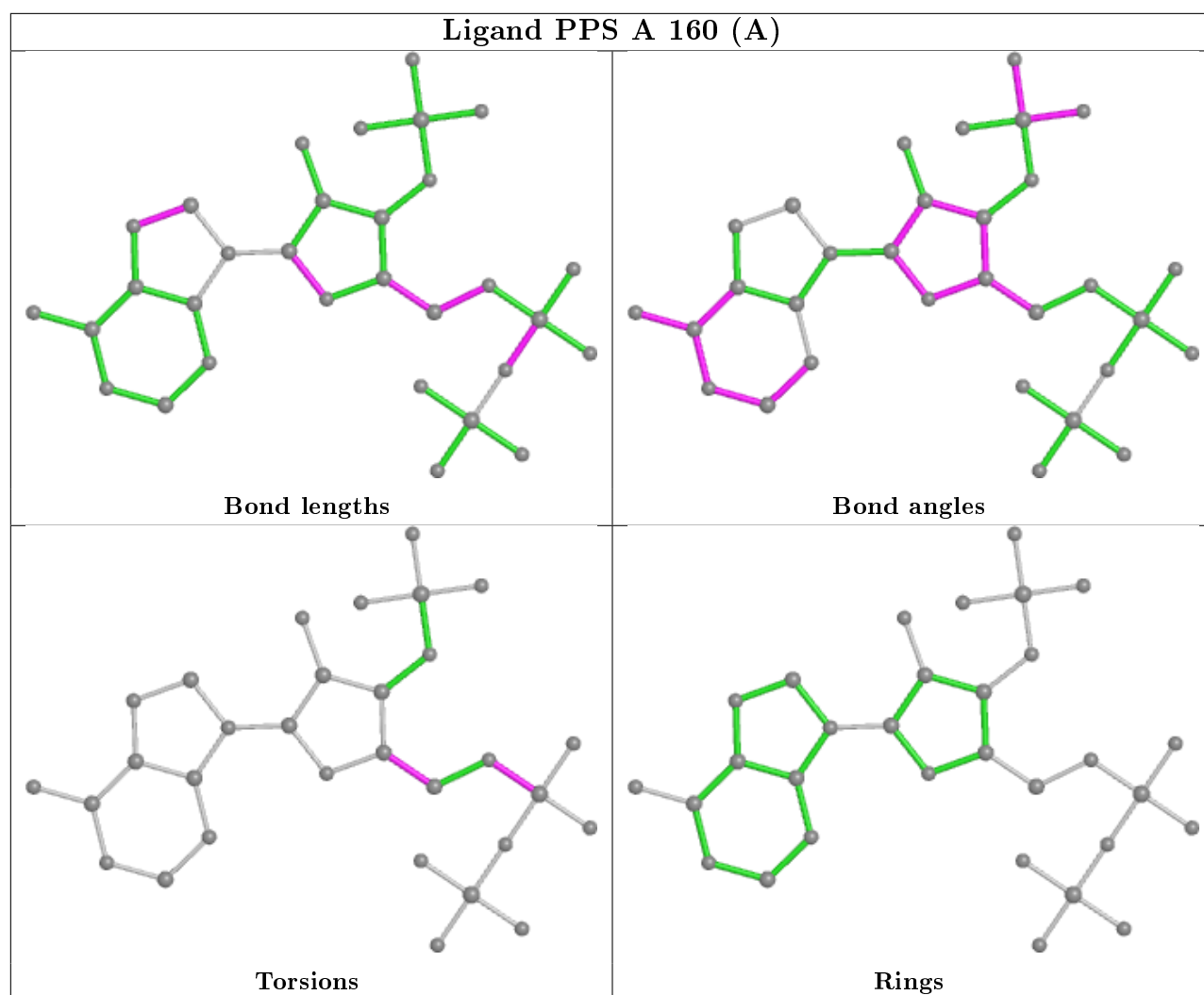
Bond angles



Torsions



Rings



5.7 Other polymers [i](#)

There are no such residues in this entry.

5.8 Polymer linkage issues [i](#)

There are no chain breaks in this entry.

6 Fit of model and data ⓘ

6.1 Protein, DNA and RNA chains ⓘ

EDS was not executed - this section is therefore empty.

6.2 Non-standard residues in protein, DNA, RNA chains ⓘ

EDS was not executed - this section is therefore empty.

6.3 Carbohydrates ⓘ

EDS was not executed - this section is therefore empty.

6.4 Ligands ⓘ

EDS was not executed - this section is therefore empty.

6.5 Other polymers ⓘ

EDS was not executed - this section is therefore empty.