



# Full wwPDB X-ray Structure Validation Report ⓘ

Nov 2, 2021 – 09:20 PM EDT

PDB ID : 3BUK  
Title : Crystal Structure of the Neurotrophin-3 and p75NTR Symmetrical Complex  
Authors : Jiang, T.; Gong, Y.; Cao, P.; Yu, H.J.  
Deposited on : 2008-01-02  
Resolution : 2.60 Å(reported)

This is a Full wwPDB X-ray Structure Validation Report for a publicly released PDB entry.

We welcome your comments at [validation@mail.wwpdb.org](mailto:validation@mail.wwpdb.org)

A user guide is available at

<https://www.wwpdb.org/validation/2017/XrayValidationReportHelp>

with specific help available everywhere you see the ⓘ symbol.

---

The following versions of software and data (see [references ⓘ](#)) were used in the production of this report:

MolProbity : 4.02b-467  
Mogul : 1.8.5 (274361), CSD as541be (2020)  
Xtriage (Phenix) : 1.13  
EDS : 2.23.2  
Percentile statistics : 20191225.v01 (using entries in the PDB archive December 25th 2019)  
Refmac : 5.8.0158  
CCP4 : 7.0.044 (Gargrove)  
Ideal geometry (proteins) : Engh & Huber (2001)  
Ideal geometry (DNA, RNA) : Parkinson et al. (1996)  
Validation Pipeline (wwPDB-VP) : 2.23.2

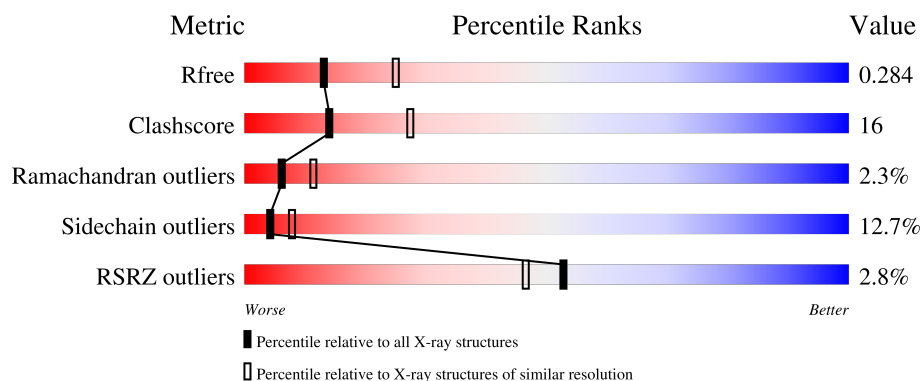
# 1 Overall quality at a glance

The following experimental techniques were used to determine the structure:

*X-RAY DIFFRACTION*

The reported resolution of this entry is 2.60 Å.

Percentile scores (ranging between 0-100) for global validation metrics of the entry are shown in the following graphic. The table shows the number of entries on which the scores are based.



Metric	Whole archive (#Entries)	Similar resolution (#Entries, resolution range(Å))
$R_{free}$	130704	3163 (2.60-2.60)
Clashscore	141614	3518 (2.60-2.60)
Ramachandran outliers	138981	3455 (2.60-2.60)
Sidechain outliers	138945	3455 (2.60-2.60)
RSRZ outliers	127900	3104 (2.60-2.60)

The table below summarises the geometric issues observed across the polymeric chains and their fit to the electron density. The red, orange, yellow and green segments of the lower bar indicate the fraction of residues that contain outliers for  $\geq 3$ , 2, 1 and 0 types of geometric quality criteria respectively. A grey segment represents the fraction of residues that are not modelled. The numeric value for each fraction is indicated below the corresponding segment, with a dot representing fractions  $\leq 5\%$ . The upper red bar (where present) indicates the fraction of residues that have poor fit to the electron density. The numeric value is given above the bar.

Mol	Chain	Length	Quality of chain
1	A	119	<div> <div>66%</div> <div>24%</div> <div>• 7%</div> </div>
1	B	119	<div> <div>65%</div> <div>24%</div> <div>• • 7%</div> </div>
2	C	167	<div> <div>4%</div> <div>66%</div> <div>23%</div> <div>5% • 5%</div> </div>
2	D	167	<div> <div>4%</div> <div>69%</div> <div>20%</div> <div>5% • 5%</div> </div>

## 2 Entry composition

There are 4 unique types of molecules in this entry. The entry contains 4251 atoms, of which 0 are hydrogens and 0 are deuteriums.

In the tables below, the ZeroOcc column contains the number of atoms modelled with zero occupancy, the AltConf column contains the number of residues with at least one atom in alternate conformation and the Trace column contains the number of residues modelled with at most 2 atoms.

- Molecule 1 is a protein called Neurotrophin-3.

Mol	Chain	Residues	Atoms					ZeroOcc	AltConf	Trace
1	A	111	Total	C	N	O	S	0	0	0
			881	542	165	168	6			
1	B	111	Total	C	N	O	S	0	0	0
			881	542	165	168	6			

- Molecule 2 is a protein called Tumor necrosis factor receptor superfamily member 16.

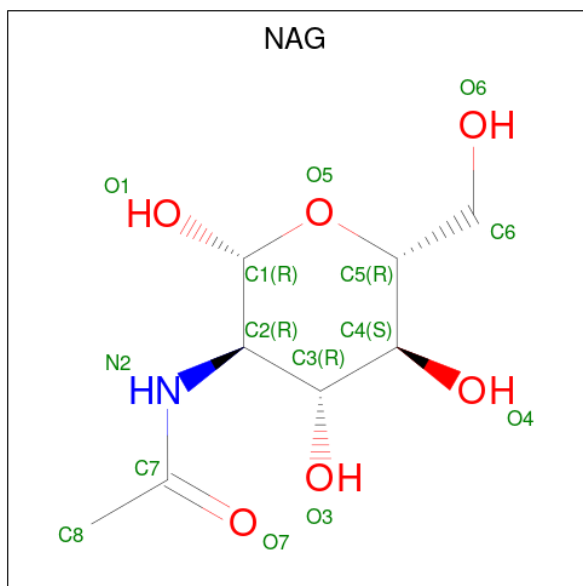
Mol	Chain	Residues	Atoms					ZeroOcc	AltConf	Trace
2	C	159	Total	C	N	O	S	0	0	0
			1159	689	188	257	25			
2	D	159	Total	C	N	O	S	0	0	0
			1159	689	188	257	25			

There are 14 discrepancies between the modelled and reference sequences:

Chain	Residue	Modelled	Actual	Comment	Reference
C	42	SER	ASN	engineered mutation	UNP P07174
C	162	HIS	-	expression tag	UNP P07174
C	163	HIS	-	expression tag	UNP P07174
C	164	HIS	-	expression tag	UNP P07174
C	165	HIS	-	expression tag	UNP P07174
C	166	HIS	-	expression tag	UNP P07174
C	167	HIS	-	expression tag	UNP P07174
D	42	SER	ASN	engineered mutation	UNP P07174
D	162	HIS	-	expression tag	UNP P07174
D	163	HIS	-	expression tag	UNP P07174
D	164	HIS	-	expression tag	UNP P07174
D	165	HIS	-	expression tag	UNP P07174
D	166	HIS	-	expression tag	UNP P07174
D	167	HIS	-	expression tag	UNP P07174

- Molecule 3 is 2-acetamido-2-deoxy-beta-D-glucopyranose (three-letter code: NAG) (formula:

C<sub>8</sub>H<sub>15</sub>NO<sub>6</sub>).



Mol	Chain	Residues	Atoms				ZeroOcc	AltConf
3	C	1	Total	C	N	O	0	0
			14	8	1	5		
3	D	1	Total	C	N	O	0	0
			14	8	1	5		

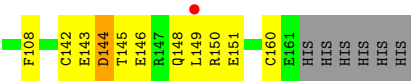
- Molecule 4 is water.

Mol	Chain	Residues	Atoms		ZeroOcc	AltConf
4	A	35	Total	O	0	0
			35	35		
4	B	38	Total	O	0	0
			38	38		
4	C	38	Total	O	0	0
			38	38		
4	D	32	Total	O	0	0
			32	32		



- Molecule 1: Neurotrophin-3





## 4 Data and refinement statistics

Property	Value	Source
Space group	H 3	Depositor
Cell constants a, b, c, $\alpha$ , $\beta$ , $\gamma$	125.80Å 125.80Å 133.10Å 90.00° 90.00° 120.00°	Depositor
Resolution (Å)	50.00 – 2.60 35.02 – 2.60	Depositor EDS
% Data completeness (in resolution range)	96.2 (50.00-2.60) 96.1 (35.02-2.60)	Depositor EDS
$R_{merge}$	0.06	Depositor
$R_{sym}$	(Not available)	Depositor
$\langle I/\sigma(I) \rangle$ <sup>1</sup>	2.39 (at 2.61Å)	Xtriage
Refinement program	REFMAC 5.2.0019	Depositor
R, $R_{free}$	0.224 , 0.288 0.222 , 0.284	Depositor DCC
$R_{free}$ test set	1194 reflections (5.12%)	wwPDB-VP
Wilson B-factor (Å <sup>2</sup> )	44.5	Xtriage
Anisotropy	0.119	Xtriage
Bulk solvent $k_{sol}$ (e/Å <sup>3</sup> ), $B_{sol}$ (Å <sup>2</sup> )	0.29 , 14.7	EDS
L-test for twinning <sup>2</sup>	$\langle  L  \rangle = 0.50$ , $\langle L^2 \rangle = 0.33$	Xtriage
Estimated twinning fraction	0.479 for h,-h-k,-l	Xtriage
$F_o, F_c$ correlation	0.93	EDS
Total number of atoms	4251	wwPDB-VP
Average B, all atoms (Å <sup>2</sup> )	45.0	wwPDB-VP

Xtriage's analysis on translational NCS is as follows: *The largest off-origin peak in the Patterson function is 5.65% of the height of the origin peak. No significant pseudotranslation is detected.*

<sup>1</sup>Intensities estimated from amplitudes.

<sup>2</sup>Theoretical values of  $\langle |L| \rangle$ ,  $\langle L^2 \rangle$  for acentric reflections are 0.5, 0.333 respectively for untwinned datasets, and 0.375, 0.2 for perfectly twinned datasets.

## 5 Model quality [i](#)

### 5.1 Standard geometry [i](#)

Bond lengths and bond angles in the following residue types are not validated in this section:  
NAG

The Z score for a bond length (or angle) is the number of standard deviations the observed value is removed from the expected value. A bond length (or angle) with  $|Z| > 5$  is considered an outlier worth inspection. RMSZ is the root-mean-square of all Z scores of the bond lengths (or angles).

Mol	Chain	Bond lengths		Bond angles	
		RMSZ	$\# Z  > 5$	RMSZ	$\# Z  > 5$
1	A	0.74	0/898	0.82	1/1213 (0.1%)
1	B	0.74	0/898	0.84	0/1213
2	C	0.73	0/1179	0.82	0/1609
2	D	0.75	0/1179	0.81	1/1609 (0.1%)
All	All	0.74	0/4154	0.82	2/5644 (0.0%)

Chiral center outliers are detected by calculating the chiral volume of a chiral center and verifying if the center is modelled as a planar moiety or with the opposite hand. A planarity outlier is detected by checking planarity of atoms in a peptide group, atoms in a mainchain group or atoms of a sidechain that are expected to be planar.

Mol	Chain	#Chirality outliers	#Planarity outliers
1	B	0	2
2	C	0	1
2	D	0	1
All	All	0	4

There are no bond length outliers.

All (2) bond angle outliers are listed below:

Mol	Chain	Res	Type	Atoms	Z	Observed(°)	Ideal(°)
1	A	29	ASP	CB-CG-OD2	5.15	122.94	118.30
2	D	142	CYS	CA-CB-SG	-5.03	104.94	114.00

There are no chirality outliers.

All (4) planarity outliers are listed below:

Mol	Chain	Res	Type	Group
1	B	44	GLY	Peptide

*Continued on next page...*



*Continued from previous page...*

Mol	Chain	Res	Type	Group
1	B	45	ASN	Peptide
2	C	9	TYR	Peptide
2	D	9	TYR	Peptide

## 5.2 Too-close contacts

In the following table, the Non-H and H(model) columns list the number of non-hydrogen atoms and hydrogen atoms in the chain respectively. The H(added) column lists the number of hydrogen atoms added and optimized by MolProbity. The Clashes column lists the number of clashes within the asymmetric unit, whereas Symm-Clashes lists symmetry-related clashes.

Mol	Chain	Non-H	H(model)	H(added)	Clashes	Symm-Clashes
1	A	881	0	849	22	0
1	B	881	0	849	23	0
2	C	1159	0	1005	44	0
2	D	1159	0	1005	40	0
3	C	14	0	13	0	0
3	D	14	0	13	0	0
4	A	35	0	0	4	0
4	B	38	0	0	3	0
4	C	38	0	0	2	0
4	D	32	0	0	1	0
All	All	4251	0	3734	123	0

The all-atom clashscore is defined as the number of clashes found per 1000 atoms (including hydrogen atoms). The all-atom clashscore for this structure is 16.

All (123) close contacts within the same asymmetric unit are listed below, sorted by their clash magnitude.

Atom-1	Atom-2	Interatomic distance (Å)	Clash overlap (Å)
2:C:44:THR:HG23	2:C:55:CYS:HB3	1.39	0.99
1:B:7:HIS:CE1	2:C:108:PHE:HA	1.98	0.98
1:B:43:THR:HG23	1:B:44:GLY:H	1.31	0.91
1:B:7:HIS:HE1	2:C:108:PHE:HA	1.35	0.89
2:D:21:LEU:HD22	2:D:21:LEU:H	1.37	0.87
2:C:40:LEU:HB3	2:C:43:VAL:HG22	1.55	0.87
1:B:43:THR:HG23	1:B:44:GLY:N	1.90	0.87
1:A:50:GLN:HE22	1:A:89:LEU:H	1.24	0.85
1:B:50:GLN:HE22	1:B:89:LEU:H	1.23	0.84
2:C:39:CYS:HB3	2:C:44:THR:HG22	1.61	0.82

*Continued on next page...*

*Continued from previous page...*

Atom-1	Atom-2	Interatomic distance (Å)	Clash overlap (Å)
2:C:80:ARG:HG3	2:C:80:ARG:HH11	1.43	0.82
1:B:67:CYS:HB2	1:B:70:ILE:HD13	1.61	0.80
2:D:44:THR:HG23	2:D:55:CYS:HB3	1.63	0.80
2:C:149:LEU:HG	2:C:150:ARG:N	1.97	0.79
2:C:44:THR:CG2	2:C:55:CYS:HB3	2.14	0.78
2:C:80:ARG:HH11	2:C:80:ARG:CG	1.98	0.77
2:D:149:LEU:HG	2:D:150:ARG:H	1.51	0.75
2:D:64:LEU:HD12	2:D:93:HIS:HD2	1.54	0.72
2:C:33:GLN:HG2	2:C:34:THR:H	1.56	0.70
1:B:43:THR:CG2	1:B:44:GLY:N	2.56	0.69
2:C:20:ASN:HB3	4:C:193:HOH:O	1.92	0.68
2:D:72:VAL:HG22	2:D:73:GLU:H	1.60	0.66
2:D:40:LEU:H	2:D:44:THR:HG22	1.59	0.66
2:C:149:LEU:HG	2:C:150:ARG:H	1.58	0.65
2:C:89:GLU:OE1	2:C:113:LYS:HD3	1.96	0.65
2:D:21:LEU:H	2:D:21:LEU:CD2	2.09	0.65
2:D:64:LEU:HD12	2:D:93:HIS:CD2	2.33	0.64
2:D:39:CYS:HB3	2:D:44:THR:HG22	1.80	0.64
1:B:85:TYR:CE1	1:B:103:ARG:HG2	2.34	0.63
2:D:149:LEU:HG	2:D:150:ARG:N	2.13	0.62
2:D:8:LEU:O	2:D:10:THR:HG23	1.99	0.62
1:A:43:THR:CG2	1:A:44:GLY:N	2.62	0.61
2:C:9:TYR:CD2	2:C:15:CYS:HB2	2.35	0.61
2:C:27:GLN:HB2	2:C:35:VAL:HG23	1.84	0.60
2:D:72:VAL:HG22	2:D:73:GLU:N	2.16	0.60
2:C:89:GLU:C	2:C:91:THR:H	2.05	0.59
1:B:7:HIS:CE1	2:C:109:SER:H	2.20	0.59
1:B:44:GLY:O	1:B:45:ASN:HB2	2.02	0.59
2:D:39:CYS:HB3	2:D:44:THR:CG2	2.32	0.59
2:D:148:GLN:HB3	2:D:160:CYS:SG	2.43	0.59
2:D:29:CYS:N	2:D:34:THR:HG22	2.18	0.58
1:A:62:PRO:HD2	1:A:66:GLY:O	2.03	0.58
2:C:39:CYS:CB	2:C:44:THR:HG22	2.33	0.58
2:D:11:HIS:CE1	4:D:169:HOH:O	2.56	0.57
2:D:19:CYS:SG	2:D:25:VAL:HG12	2.46	0.56
2:D:40:LEU:N	2:D:44:THR:HG22	2.22	0.55
2:C:89:GLU:O	2:C:91:THR:N	2.40	0.54
1:A:8:ARG:HB3	2:D:108:PHE:CE2	2.42	0.54
1:B:7:HIS:HE1	2:C:108:PHE:CA	2.15	0.54
2:C:27:GLN:OE1	2:C:35:VAL:HG21	2.07	0.54
1:B:87:ARG:HD2	1:B:99:TRP:HB3	1.89	0.54

*Continued on next page...*

*Continued from previous page...*

Atom-1	Atom-2	Interatomic distance (Å)	Clash overlap (Å)
2:C:72:VAL:HG22	2:C:73:GLU:N	2.23	0.54
2:C:9:TYR:HD2	2:C:15:CYS:HB2	1.72	0.53
1:B:65:ASN:ND2	1:B:72:ASP:OD2	2.41	0.52
2:D:9:TYR:CD2	2:D:15:CYS:HB2	2.44	0.52
1:A:9:GLY:HA2	4:A:124:HOH:O	2.10	0.52
1:B:62:PRO:HD2	1:B:66:GLY:O	2.09	0.52
2:D:143:GLU:CG	2:D:146:GLU:OE1	2.58	0.52
2:D:72:VAL:CG2	2:D:73:GLU:H	2.22	0.51
2:D:21:LEU:HD22	2:D:21:LEU:N	2.18	0.51
1:A:65:ASN:ND2	1:A:72:ASP:OD2	2.43	0.51
1:B:9:GLY:HA2	4:B:137:HOH:O	2.09	0.51
2:C:80:ARG:HD2	2:C:81:CYS:O	2.11	0.51
2:C:80:ARG:CG	2:C:80:ARG:NH1	2.66	0.50
2:C:11:HIS:CE1	4:C:171:HOH:O	2.64	0.50
2:C:39:CYS:HB3	2:C:44:THR:CG2	2.39	0.49
2:D:44:THR:CG2	2:D:55:CYS:HB3	2.39	0.49
1:A:63:VAL:O	1:A:64:LYS:C	2.51	0.48
2:C:72:VAL:HG22	2:C:73:GLU:H	1.77	0.48
1:A:87:ARG:HG2	1:A:101:TRP:CE2	2.49	0.48
1:B:50:GLN:HE22	1:B:89:LEU:N	2.03	0.48
2:D:143:GLU:HG2	2:D:146:GLU:OE1	2.14	0.48
1:A:43:THR:HG22	1:A:44:GLY:N	2.28	0.48
1:B:24:LYS:NZ	1:B:54:GLU:OE2	2.41	0.47
1:A:24:LYS:NZ	1:A:54:GLU:OE2	2.40	0.47
1:A:104:ILE:HG22	4:A:132:HOH:O	2.15	0.47
1:B:24:LYS:HE3	1:B:24:LYS:HB2	1.69	0.47
1:A:43:THR:HG23	1:A:44:GLY:H	1.79	0.47
1:B:7:HIS:HD2	1:B:10:GLU:O	1.98	0.47
1:A:13:VAL:HA	1:A:68:ARG:HB3	1.97	0.46
1:A:55:THR:CG2	4:B:143:HOH:O	2.62	0.46
1:B:90:THR:O	1:B:97:VAL:HA	2.16	0.46
1:A:43:THR:HG21	4:A:149:HOH:O	2.14	0.46
2:C:68:SER:HB3	2:C:80:ARG:HG2	1.98	0.46
2:D:40:LEU:HB3	2:D:43:VAL:HG22	1.98	0.46
2:D:90:GLU:O	2:D:90:GLU:HG3	2.16	0.46
2:C:102:VAL:CG1	2:C:155:TRP:HB2	2.47	0.45
2:D:72:VAL:CG2	2:D:73:GLU:N	2.80	0.45
2:C:59:THR:HB	2:C:76:ASP:OD1	2.16	0.44
1:A:8:ARG:HB3	2:D:108:PHE:CD2	2.52	0.44
2:C:148:GLN:HB3	2:C:160:CYS:SG	2.57	0.44
2:D:40:LEU:HD13	2:D:43:VAL:HG13	1.98	0.44

*Continued on next page...*

*Continued from previous page...*

Atom-1	Atom-2	Interatomic distance (Å)	Clash overlap (Å)
2:D:83:TYR:CD2	2:D:83:TYR:N	2.85	0.44
2:C:88:ASP:OD1	2:C:88:ASP:C	2.54	0.44
2:C:160:CYS:O	2:C:161:GLU:HB2	2.17	0.44
2:C:69:ALA:HA	2:C:70:PRO:HD3	1.82	0.44
2:C:148:GLN:CB	2:C:160:CYS:SG	3.06	0.44
2:C:27:GLN:HB2	2:C:35:VAL:CG2	2.47	0.43
2:C:149:LEU:CG	2:C:150:ARG:N	2.75	0.43
2:C:80:ARG:HG3	2:C:80:ARG:NH1	2.22	0.43
2:D:8:LEU:HG	2:D:29:CYS:HB3	2.00	0.42
2:D:29:CYS:SG	2:D:34:THR:HG23	2.58	0.42
1:A:17:GLU:OE1	1:A:58:LYS:HG2	2.19	0.42
1:B:85:TYR:HA	1:B:102:ILE:O	2.20	0.42
1:A:87:ARG:HD2	1:A:99:TRP:HB3	2.02	0.42
1:A:43:THR:HB	1:A:46:SER:O	2.20	0.42
2:D:80:ARG:HH11	2:D:80:ARG:HG3	1.84	0.42
1:A:55:THR:HG22	4:B:143:HOH:O	2.20	0.42
2:D:59:THR:HG1	2:D:76:ASP:CG	2.23	0.42
2:C:33:GLN:HG2	2:C:34:THR:N	2.31	0.41
2:D:8:LEU:HA	2:D:16:CYS:SG	2.59	0.41
1:A:61:ARG:HG3	4:A:134:HOH:O	2.20	0.41
2:C:44:THR:CG2	2:C:55:CYS:CB	2.93	0.41
2:D:40:LEU:H	2:D:44:THR:CG2	2.29	0.41
2:C:8:LEU:HG	2:C:29:CYS:HB3	2.01	0.41
2:D:40:LEU:HD13	2:D:43:VAL:CG1	2.51	0.41
2:C:29:CYS:N	2:C:34:THR:HG22	2.36	0.41
2:D:22:GLY:HA2	2:D:73:GLU:O	2.20	0.41
1:B:85:TYR:HE1	1:B:103:ARG:HG2	1.81	0.40
1:A:65:ASN:HD22	1:A:72:ASP:CG	2.25	0.40
2:C:40:LEU:H	2:C:44:THR:HG22	1.86	0.40
1:B:7:HIS:CG	1:B:8:ARG:N	2.89	0.40
2:D:83:TYR:H	2:D:83:TYR:HD2	1.70	0.40

There are no symmetry-related clashes.

## 5.3 Torsion angles

### 5.3.1 Protein backbone

In the following table, the Percentiles column shows the percent Ramachandran outliers of the chain as a percentile score with respect to all X-ray entries followed by that with respect to entries of similar resolution.

The Analysed column shows the number of residues for which the backbone conformation was analysed, and the total number of residues.

Mol	Chain	Analysed	Favoured	Allowed	Outliers	Percentiles	
1	A	109/119 (92%)	100 (92%)	7 (6%)	2 (2%)	8	16
1	B	109/119 (92%)	99 (91%)	7 (6%)	3 (3%)	5	7
2	C	157/167 (94%)	132 (84%)	21 (13%)	4 (2%)	5	9
2	D	157/167 (94%)	131 (83%)	23 (15%)	3 (2%)	8	15
All	All	532/572 (93%)	462 (87%)	58 (11%)	12 (2%)	6	11

All (12) Ramachandran outliers are listed below:

Mol	Chain	Res	Type
2	C	15	CYS
2	D	144	ASP
1	A	64	LYS
1	B	45	ASN
1	B	64	LYS
2	C	90	GLU
2	D	5	SER
2	D	15	CYS
1	A	71	ASP
2	C	144	ASP
2	C	11	HIS
1	B	44	GLY

### 5.3.2 Protein sidechains ⓘ

In the following table, the Percentiles column shows the percent sidechain outliers of the chain as a percentile score with respect to all X-ray entries followed by that with respect to entries of similar resolution.

The Analysed column shows the number of residues for which the sidechain conformation was analysed, and the total number of residues.

Mol	Chain	Analysed	Rotameric	Outliers	Percentiles	
1	A	98/106 (92%)	88 (90%)	10 (10%)	7	14
1	B	98/106 (92%)	86 (88%)	12 (12%)	5	9
2	C	135/144 (94%)	117 (87%)	18 (13%)	4	7
2	D	135/144 (94%)	116 (86%)	19 (14%)	3	6
All	All	466/500 (93%)	407 (87%)	59 (13%)	4	8

All (59) residues with a non-rotameric sidechain are listed below:

Mol	Chain	Res	Type
1	A	10	GLU
1	A	43	THR
1	A	49	LYS
1	A	55	THR
1	A	59	GLU
1	A	61	ARG
1	A	73	LYS
1	A	78	GLN
1	A	84	THR
1	A	87	ARG
1	B	7	HIS
1	B	42	LYS
1	B	43	THR
1	B	48	VAL
1	B	49	LYS
1	B	55	THR
1	B	59	GLU
1	B	73	LYS
1	B	78	GLN
1	B	84	THR
1	B	87	ARG
1	B	96	LEU
2	C	5	SER
2	C	6	THR
2	C	9	TYR
2	C	15	CYS
2	C	21	LEU
2	C	25	VAL
2	C	29	CYS
2	C	40	LEU
2	C	44	THR
2	C	48	VAL
2	C	62	LEU
2	C	80	ARG
2	C	81	CYS
2	C	123	GLU
2	C	144	ASP
2	C	145	THR
2	C	146	GLU
2	C	149	LEU
2	D	5	SER
2	D	6	THR

*Continued on next page...*

*Continued from previous page...*

Mol	Chain	Res	Type
2	D	8	LEU
2	D	9	TYR
2	D	15	CYS
2	D	21	LEU
2	D	33	GLN
2	D	40	LEU
2	D	43	VAL
2	D	44	THR
2	D	52	THR
2	D	62	LEU
2	D	80	ARG
2	D	81	CYS
2	D	83	TYR
2	D	95	GLU
2	D	144	ASP
2	D	145	THR
2	D	151	GLU

Sometimes sidechains can be flipped to improve hydrogen bonding and reduce clashes. All (14) such sidechains are listed below:

Mol	Chain	Res	Type
1	A	50	GLN
1	A	65	ASN
1	B	7	HIS
1	B	50	GLN
1	B	65	ASN
2	C	11	HIS
2	C	20	ASN
2	C	33	GLN
2	C	111	GLN
2	C	148	GLN
2	D	11	HIS
2	D	20	ASN
2	D	93	HIS
2	D	148	GLN

### 5.3.3 RNA ⓘ

There are no RNA molecules in this entry.

## 5.4 Non-standard residues in protein, DNA, RNA chains [i](#)

There are no non-standard protein/DNA/RNA residues in this entry.

## 5.5 Carbohydrates [i](#)

There are no monosaccharides in this entry.

## 5.6 Ligand geometry [i](#)

2 ligands are modelled in this entry.

In the following table, the Counts columns list the number of bonds (or angles) for which Mogul statistics could be retrieved, the number of bonds (or angles) that are observed in the model and the number of bonds (or angles) that are defined in the Chemical Component Dictionary. The Link column lists molecule types, if any, to which the group is linked. The Z score for a bond length (or angle) is the number of standard deviations the observed value is removed from the expected value. A bond length (or angle) with  $|Z| > 2$  is considered an outlier worth inspection. RMSZ is the root-mean-square of all Z scores of the bond lengths (or angles).

Mol	Type	Chain	Res	Link	Bond lengths			Bond angles		
					Counts	RMSZ	$\# Z  > 2$	Counts	RMSZ	$\# Z  > 2$
3	NAG	C	168	2	14,14,15	0.74	1 (7%)	17,19,21	1.69	4 (23%)
3	NAG	D	168	2	14,14,15	0.61	0	17,19,21	1.43	3 (17%)

In the following table, the Chirals column lists the number of chiral outliers, the number of chiral centers analysed, the number of these observed in the model and the number defined in the Chemical Component Dictionary. Similar counts are reported in the Torsion and Rings columns. '-' means no outliers of that kind were identified.

Mol	Type	Chain	Res	Link	Chirals	Torsions	Rings
3	NAG	C	168	2	-	4/6/23/26	0/1/1/1
3	NAG	D	168	2	-	6/6/23/26	0/1/1/1

All (1) bond length outliers are listed below:

Mol	Chain	Res	Type	Atoms	Z	Observed(Å)	Ideal(Å)
3	C	168	NAG	C1-C2	2.31	1.55	1.52

All (7) bond angle outliers are listed below:



Mol	Chain	Res	Type	Atoms	Z	Observed(°)	Ideal(°)
3	C	168	NAG	C1-O5-C5	5.00	118.97	112.19
3	D	168	NAG	C1-O5-C5	3.68	117.17	112.19
3	C	168	NAG	O5-C1-C2	2.68	115.53	111.29
3	D	168	NAG	O5-C1-C2	2.28	114.89	111.29
3	D	168	NAG	C4-C3-C2	-2.22	107.76	111.02
3	C	168	NAG	C3-C4-C5	-2.06	106.57	110.24
3	C	168	NAG	O4-C4-C5	2.02	114.31	109.30

There are no chirality outliers.

All (10) torsion outliers are listed below:

Mol	Chain	Res	Type	Atoms
3	C	168	NAG	C8-C7-N2-C2
3	C	168	NAG	O7-C7-N2-C2
3	D	168	NAG	O7-C7-N2-C2
3	D	168	NAG	C8-C7-N2-C2
3	D	168	NAG	C4-C5-C6-O6
3	D	168	NAG	O5-C5-C6-O6
3	C	168	NAG	C1-C2-N2-C7
3	C	168	NAG	C3-C2-N2-C7
3	D	168	NAG	C1-C2-N2-C7
3	D	168	NAG	C3-C2-N2-C7

There are no ring outliers.

No monomer is involved in short contacts.

## 5.7 Other polymers [i](#)

There are no such residues in this entry.

## 5.8 Polymer linkage issues [i](#)

There are no chain breaks in this entry.

## 6 Fit of model and data ⓘ

### 6.1 Protein, DNA and RNA chains ⓘ

In the following table, the column labelled ‘#RSRZ> 2’ contains the number (and percentage) of RSRZ outliers, followed by percent RSRZ outliers for the chain as percentile scores relative to all X-ray entries and entries of similar resolution. The OWAB column contains the minimum, median, 95<sup>th</sup> percentile and maximum values of the occupancy-weighted average B-factor per residue. The column labelled ‘Q< 0.9’ lists the number of (and percentage) of residues with an average occupancy less than 0.9.

Mol	Chain	Analysed	<RSRZ>	#RSRZ>2	OWAB(Å <sup>2</sup> )	Q<0.9
1	A	111/119 (93%)	-0.22	1 (0%) 84 82	21, 37, 59, 83	0
1	B	111/119 (93%)	-0.28	0 100 100	21, 37, 60, 81	0
2	C	159/167 (95%)	-0.11	7 (4%) 34 27	22, 43, 96, 100	0
2	D	159/167 (95%)	-0.08	7 (4%) 34 27	21, 43, 97, 100	0
All	All	540/572 (94%)	-0.16	15 (2%) 53 46	21, 40, 83, 100	0

All (15) RSRZ outliers are listed below:

Mol	Chain	Res	Type	RSRZ
2	D	3	THR	6.0
2	C	8	LEU	3.8
2	D	149	LEU	3.6
2	C	11	HIS	3.5
2	C	3	THR	3.5
2	D	8	LEU	3.0
2	D	11	HIS	2.9
2	C	5	SER	2.4
2	D	31	ALA	2.4
1	A	7	HIS	2.4
2	D	9	TYR	2.4
2	C	145	THR	2.3
2	C	149	LEU	2.2
2	D	30	GLY	2.1
2	C	30	GLY	2.0

### 6.2 Non-standard residues in protein, DNA, RNA chains ⓘ

There are no non-standard protein/DNA/RNA residues in this entry.

### 6.3 Carbohydrates [i](#)

There are no monosaccharides in this entry.

### 6.4 Ligands [i](#)

In the following table, the Atoms column lists the number of modelled atoms in the group and the number defined in the chemical component dictionary. The B-factors column lists the minimum, median, 95<sup>th</sup> percentile and maximum values of B factors of atoms in the group. The column labelled 'Q< 0.9' lists the number of atoms with occupancy less than 0.9.

Mol	Type	Chain	Res	Atoms	RSCC	RSR	B-factors( $\text{\AA}^2$ )	Q<0.9
3	NAG	C	168	14/15	0.85	0.23	86,89,89,90	0
3	NAG	D	168	14/15	0.85	0.20	88,91,92,93	0

### 6.5 Other polymers [i](#)

There are no such residues in this entry.