



Full wwPDB X-ray Structure Validation Report ⓘ

Nov 16, 2021 – 08:03 PM EST

PDB ID : 6BUL
Title : Crystal structure of Staphylococcus aureus ketol-acid reductoisomerase with hydroxyoxamate inhibitor 2
Authors : Kandale, A.; Patel, K.M.; Zheng, S.; You, L.; Guddat, L.W.; Schenk, G.; Schembri, M.A.; McFeary, R.P.
Deposited on : 2017-12-10
Resolution : 1.88 Å(reported)

This is a Full wwPDB X-ray Structure Validation Report for a publicly released PDB entry.

We welcome your comments at validation@mail.wwpdb.org

A user guide is available at

<https://www.wwpdb.org/validation/2017/XrayValidationReportHelp>

with specific help available everywhere you see the ⓘ symbol.

The following versions of software and data (see [references ⓘ](#)) were used in the production of this report:

MolProbity : 4.02b-467
Mogul : 1.8.5 (274361), CSD as541be (2020)
Xtriage (Phenix) : 1.13
EDS : 2.23.2
buster-report : 1.1.7 (2018)
Percentile statistics : 20191225.v01 (using entries in the PDB archive December 25th 2019)
Refmac : 5.8.0158
CCP4 : 7.0.044 (Gargrove)
Ideal geometry (proteins) : Engh & Huber (2001)
Ideal geometry (DNA, RNA) : Parkinson et al. (1996)
Validation Pipeline (wwPDB-VP) : 2.23.2

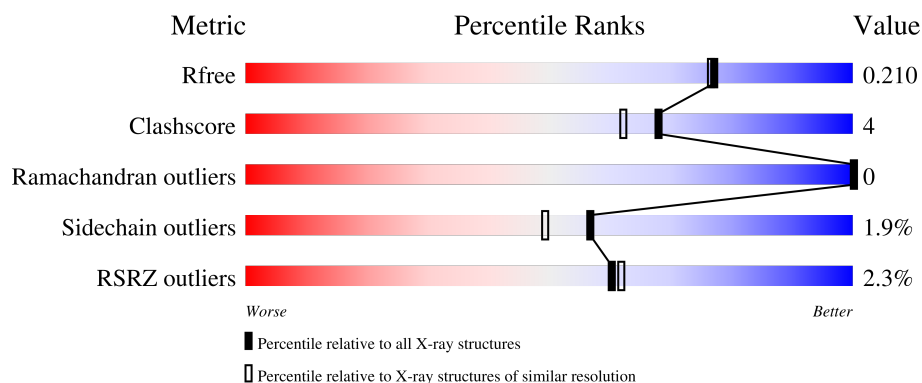
1 Overall quality at a glance

The following experimental techniques were used to determine the structure:

X-RAY DIFFRACTION

The reported resolution of this entry is 1.88 Å.

Percentile scores (ranging between 0-100) for global validation metrics of the entry are shown in the following graphic. The table shows the number of entries on which the scores are based.



Metric	Whole archive (#Entries)	Similar resolution (#Entries, resolution range(Å))
R_{free}	130704	9470 (1.90-1.86)
Clashscore	141614	10282 (1.90-1.86)
Ramachandran outliers	138981	10152 (1.90-1.86)
Sidechain outliers	138945	10152 (1.90-1.86)
RSRZ outliers	127900	9303 (1.90-1.86)

The table below summarises the geometric issues observed across the polymeric chains and their fit to the electron density. The red, orange, yellow and green segments of the lower bar indicate the fraction of residues that contain outliers for ≥ 3 , 2, 1 and 0 types of geometric quality criteria respectively. A grey segment represents the fraction of residues that are not modelled. The numeric value for each fraction is indicated below the corresponding segment, with a dot representing fractions $\leq 5\%$. The upper red bar (where present) indicates the fraction of residues that have poor fit to the electron density. The numeric value is given above the bar.

Mol	Chain	Length	Quality of chain
1	A	340	<div> <div>%</div> <div> <div></div> <div>87%</div> <div>7%</div> <div>6%</div> </div> </div>
1	B	340	<div> <div>4%</div> <div> <div></div> <div>86%</div> <div>9%</div> <div>.</div> <div>.</div> </div> </div>

2 Entry composition

There are 6 unique types of molecules in this entry. The entry contains 5584 atoms, of which 0 are hydrogens and 0 are deuteriums.

In the tables below, the ZeroOcc column contains the number of atoms modelled with zero occupancy, the AltConf column contains the number of residues with at least one atom in alternate conformation and the Trace column contains the number of residues modelled with at most 2 atoms.

- Molecule 1 is a protein called Ketol-acid reductoisomerase (NADP(+)).

Mol	Chain	Residues	Atoms					ZeroOcc	AltConf	Trace
1	A	321	Total	C	N	O	S	0	1	0
			2509	1589	427	486	7			
1	B	327	Total	C	N	O	S	0	0	0
			2554	1622	433	491	8			

There are 12 discrepancies between the modelled and reference sequences:

Chain	Residue	Modelled	Actual	Comment	Reference
A	335	HIS	-	expression tag	UNP Q2YUF3
A	336	HIS	-	expression tag	UNP Q2YUF3
A	337	HIS	-	expression tag	UNP Q2YUF3
A	338	HIS	-	expression tag	UNP Q2YUF3
A	339	HIS	-	expression tag	UNP Q2YUF3
A	340	HIS	-	expression tag	UNP Q2YUF3
B	335	HIS	-	expression tag	UNP Q2YUF3
B	336	HIS	-	expression tag	UNP Q2YUF3
B	337	HIS	-	expression tag	UNP Q2YUF3
B	338	HIS	-	expression tag	UNP Q2YUF3
B	339	HIS	-	expression tag	UNP Q2YUF3
B	340	HIS	-	expression tag	UNP Q2YUF3

- Molecule 2 is MAGNESIUM ION (three-letter code: MG) (formula: Mg).

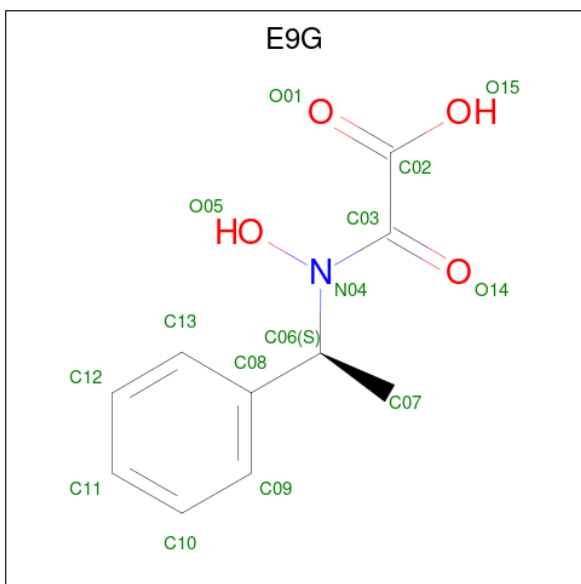
Mol	Chain	Residues	Atoms		ZeroOcc	AltConf
2	A	2	Total	Mg	0	0
			2	2		
2	B	2	Total	Mg	0	0
			2	2		

- Molecule 3 is NADP NICOTINAMIDE-ADENINE-DINUCLEOTIDE PHOSPHATE (three-letter code: NAP) (formula: C₂₁H₂₈N₇O₁₇P₃).



Mol	Chain	Residues	Atoms					ZeroOcc	AltConf
3	A	1	Total 48	C 21	N 7	O 17	P 3	0	0
3	B	1	Total 48	C 21	N 7	O 17	P 3	0	0

- Molecule 4 is {hydroxy[(1S)-1-phenylethyl]amino}(oxo)acetic acid (three-letter code: E9G) (formula: C₁₀H₁₁NO₄).



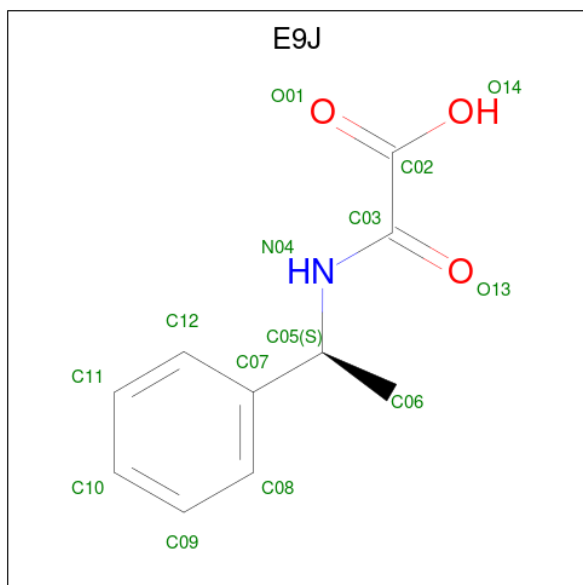
Mol	Chain	Residues	Atoms				ZeroOcc	AltConf
4	A	1	Total	C	N	O	0	1
			15	10	1	4		

Continued on next page...

Continued from previous page...

Mol	Chain	Residues	Atoms				ZeroOcc	AltConf
4	B	1	Total	C	N	O	0	1
			15	10	1	4		

- Molecule 5 is oxo{[(1S)-1-phenylethyl]amino}acetic acid (three-letter code: E9J) (formula: $C_{10}H_{11}NO_3$).



Mol	Chain	Residues	Atoms				ZeroOcc	AltConf
5	A	1	Total	C	N	O	0	1
			14	10	1	3		
5	B	1	Total	C	N	O	0	0
			14	10	1	3		

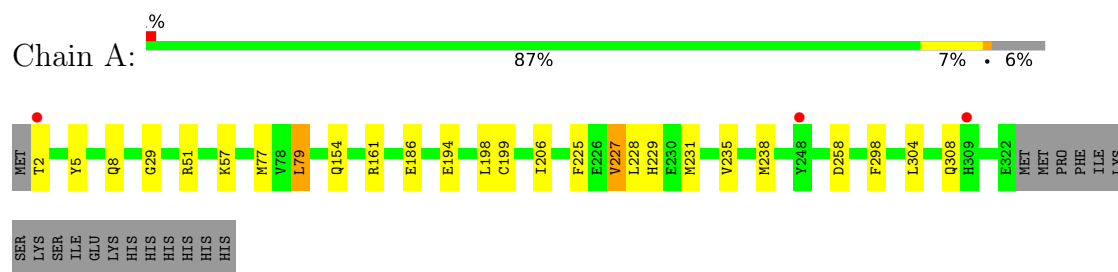
- Molecule 6 is water.

Mol	Chain	Residues	Atoms		ZeroOcc	AltConf
6	A	218	Total	O	0	0
			218	218		
6	B	145	Total	O	0	0
			145	145		

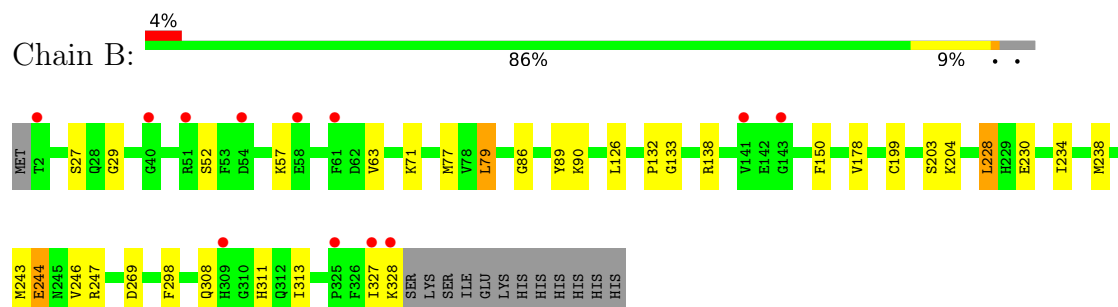
3 Residue-property plots [i](#)

These plots are drawn for all protein, RNA, DNA and oligosaccharide chains in the entry. The first graphic for a chain summarises the proportions of the various outlier classes displayed in the second graphic. The second graphic shows the sequence view annotated by issues in geometry and electron density. Residues are color-coded according to the number of geometric quality criteria for which they contain at least one outlier: green = 0, yellow = 1, orange = 2 and red = 3 or more. A red dot above a residue indicates a poor fit to the electron density ($RSRZ > 2$). Stretches of 2 or more consecutive residues without any outlier are shown as a green connector. Residues present in the sample, but not in the model, are shown in grey.

- Molecule 1: Ketol-acid reductoisomerase (NADP(+))



- Molecule 1: Ketol-acid reductoisomerase (NADP(+))



4 Data and refinement statistics

Property	Value	Source
Space group	P 1 21 1	Depositor
Cell constants a, b, c, α , β , γ	65.83Å 78.91Å 69.37Å 90.00° 101.10° 90.00°	Depositor
Resolution (Å)	39.46 – 1.88 39.46 – 1.88	Depositor EDS
% Data completeness (in resolution range)	98.8 (39.46-1.88) 98.7 (39.46-1.88)	Depositor EDS
R_{merge}	0.06	Depositor
R_{sym}	(Not available)	Depositor
$\langle I/\sigma(I) \rangle$ ¹	1.49 (at 1.88Å)	Xtriage
Refinement program	PHENIX (1.11.1 _2575: ???)	Depositor
R, R_{free}	0.163 , 0.209 0.163 , 0.210	Depositor DCC
R_{free} test set	2004 reflections (3.57%)	wwPDB-VP
Wilson B-factor (Å ²)	23.9	Xtriage
Anisotropy	0.697	Xtriage
Bulk solvent k_{sol} (e/Å ³), B_{sol} (Å ²)	0.39 , 57.7	EDS
L-test for twinning ²	$\langle L \rangle = 0.50$, $\langle L^2 \rangle = 0.34$	Xtriage
Estimated twinning fraction	No twinning to report.	Xtriage
F_o, F_c correlation	0.97	EDS
Total number of atoms	5584	wwPDB-VP
Average B, all atoms (Å ²)	30.0	wwPDB-VP

Xtriage's analysis on translational NCS is as follows: *The largest off-origin peak in the Patterson function is 6.05% of the height of the origin peak. No significant pseudotranslation is detected.*

¹Intensities estimated from amplitudes.

²Theoretical values of $\langle |L| \rangle$, $\langle L^2 \rangle$ for acentric reflections are 0.5, 0.333 respectively for untwinned datasets, and 0.375, 0.2 for perfectly twinned datasets.

5 Model quality

5.1 Standard geometry

Bond lengths and bond angles in the following residue types are not validated in this section: E9J, NAP, E9G, MG

The Z score for a bond length (or angle) is the number of standard deviations the observed value is removed from the expected value. A bond length (or angle) with $|Z| > 5$ is considered an outlier worth inspection. RMSZ is the root-mean-square of all Z scores of the bond lengths (or angles).

Mol	Chain	Bond lengths		Bond angles	
		RMSZ	$\# Z > 5$	RMSZ	$\# Z > 5$
1	A	0.74	2/2559 (0.1%)	0.75	1/3458 (0.0%)
1	B	0.65	0/2606	0.72	3/3520 (0.1%)
All	All	0.70	2/5165 (0.0%)	0.74	4/6978 (0.1%)

Chiral center outliers are detected by calculating the chiral volume of a chiral center and verifying if the center is modelled as a planar moiety or with the opposite hand. A planarity outlier is detected by checking planarity of atoms in a peptide group, atoms in a mainchain group or atoms of a sidechain that are expected to be planar.

Mol	Chain	#Chirality outliers	#Planarity outliers
1	B	0	1

All (2) bond length outliers are listed below:

Mol	Chain	Res	Type	Atoms	Z	Observed(Å)	Ideal(Å)
1	A	186	GLU	CB-CG	5.63	1.62	1.52
1	A	227	VAL	CB-CG1	-5.02	1.42	1.52

All (4) bond angle outliers are listed below:

Mol	Chain	Res	Type	Atoms	Z	Observed(°)	Ideal(°)
1	B	228	LEU	CA-CB-CG	7.05	131.52	115.30
1	A	231	MET	CG-SD-CE	6.11	109.97	100.20
1	B	126	LEU	CA-CB-CG	5.21	127.28	115.30
1	B	228	LEU	CB-CG-CD1	5.07	119.62	111.00

There are no chirality outliers.

All (1) planarity outliers are listed below:

Mol	Chain	Res	Type	Group
1	B	244	GLU	Peptide

5.2 Too-close contacts

In the following table, the Non-H and H(model) columns list the number of non-hydrogen atoms and hydrogen atoms in the chain respectively. The H(added) column lists the number of hydrogen atoms added and optimized by MolProbity. The Clashes column lists the number of clashes within the asymmetric unit, whereas Symm-Clashes lists symmetry-related clashes.

Mol	Chain	Non-H	H(model)	H(added)	Clashes	Symm-Clashes
1	A	2509	0	2442	17	0
1	B	2554	0	2497	25	0
2	A	2	0	0	0	0
2	B	2	0	0	0	0
3	A	48	0	25	0	0
3	B	48	0	24	2	0
4	A	15	0	0	2	0
4	B	15	0	0	1	0
5	A	14	0	0	0	0
5	B	14	0	0	0	0
6	A	218	0	0	3	2
6	B	145	0	0	5	1
All	All	5584	0	4988	39	2

The all-atom clashscore is defined as the number of clashes found per 1000 atoms (including hydrogen atoms). The all-atom clashscore for this structure is 4.

All (39) close contacts within the same asymmetric unit are listed below, sorted by their clash magnitude.

Atom-1	Atom-2	Interatomic distance (Å)	Clash overlap (Å)
1:A:57:LYS:NZ	6:A:502:HOH:O	1.79	1.14
4:B:401[A]:E9G:O05	6:B:501:HOH:O	1.82	0.97
1:B:86:GLY:O	1:B:90:LYS:HD3	1.66	0.95
1:B:308:GLN:O	6:B:502:HOH:O	1.90	0.88
1:B:57:LYS:HE2	1:B:63:VAL:HB	1.57	0.87
1:B:244:GLU:HG3	1:B:247:ARG:HG2	1.65	0.79
1:A:228:LEU:HD11	1:B:238:MET:HE2	1.72	0.71
1:B:29:GLY:HA2	1:B:79:LEU:HD23	1.76	0.66
1:B:234:ILE:HD11	1:B:246:VAL:HG13	1.77	0.66
1:B:311:HIS:HB2	6:B:502:HOH:O	1.96	0.64
1:A:199[B]:CYS:SG	4:A:404[B]:E9G:C10	2.88	0.61

Continued on next page...

Continued from previous page...

Atom-1	Atom-2	Interatomic distance (Å)	Clash overlap (Å)
1:A:29:GLY:HA2	1:A:79:LEU:HD23	1.82	0.61
1:A:194:GLU:O	1:A:199[B]:CYS:HB2	2.03	0.59
1:B:52:SER:OG	3:B:405:NAP:O2X	2.16	0.57
6:A:501:HOH:O	1:B:230:GLU:OE1	2.17	0.56
1:B:238:MET:HE3	1:B:243:MET:HG2	1.89	0.55
1:B:150:PHE:HD1	1:B:178:VAL:HG12	1.73	0.53
1:A:2:THR:HA	6:B:515:HOH:O	2.09	0.53
1:B:77:MET:HG3	1:B:79:LEU:HD22	1.91	0.52
1:A:5:TYR:OH	1:A:161:ARG:NH2	2.43	0.52
1:A:235:VAL:HG22	1:A:238:MET:HE3	1.92	0.52
1:A:206:ILE:HG23	1:A:227:VAL:CG1	2.41	0.51
1:A:304:LEU:O	1:A:308:GLN:HG2	2.12	0.50
1:A:154:GLN:NE2	6:A:504:HOH:O	2.35	0.49
1:A:77:MET:HG3	1:A:79:LEU:HD22	1.95	0.48
1:B:27:SER:O	1:B:133:GLY:HA3	2.14	0.48
1:B:89:TYR:HD2	1:B:90:LYS:HD2	1.79	0.47
1:A:228:LEU:CD1	1:B:238:MET:HE2	2.42	0.45
1:B:238:MET:HG2	1:B:246:VAL:HG21	2.00	0.44
1:B:311:HIS:HB3	1:B:313:ILE:HG22	2.00	0.43
1:A:258:ASP:HB2	1:B:199:CYS:HB2	2.01	0.43
1:B:247:ARG:O	6:B:504:HOH:O	2.22	0.41
1:A:225:PHE:HA	1:A:229:HIS:HB3	2.01	0.41
1:A:258:ASP:OD1	1:B:204:LYS:HE2	2.21	0.41
1:B:132:PRO:HA	3:B:405:NAP:O7N	2.21	0.41
1:B:327:ILE:HG22	1:B:328:LYS:HE3	2.02	0.40
1:A:198:LEU:HB3	4:A:404[B]:E9G:C11	2.51	0.40
1:B:90:LYS:HD2	1:B:90:LYS:N	2.37	0.40
1:B:138:ARG:HH11	1:B:138:ARG:HG2	1.87	0.40

All (2) symmetry-related close contacts are listed below. The label for Atom-2 includes the symmetry operator and encoded unit-cell translations to be applied.

Atom-1	Atom-2	Interatomic distance (Å)	Clash overlap (Å)
6:A:666:HOH:O	6:A:691:HOH:O[1_556]	2.10	0.10
6:A:659:HOH:O	6:B:519:HOH:O[1_656]	2.14	0.06

5.3 Torsion angles

5.3.1 Protein backbone

In the following table, the Percentiles column shows the percent Ramachandran outliers of the chain as a percentile score with respect to all X-ray entries followed by that with respect to entries of similar resolution.

The Analysed column shows the number of residues for which the backbone conformation was analysed, and the total number of residues.

Mol	Chain	Analysed	Favoured	Allowed	Outliers	Percentiles	
1	A	320/340 (94%)	308 (96%)	12 (4%)	0	100	100
1	B	325/340 (96%)	315 (97%)	10 (3%)	0	100	100
All	All	645/680 (95%)	623 (97%)	22 (3%)	0	100	100

There are no Ramachandran outliers to report.

5.3.2 Protein sidechains

In the following table, the Percentiles column shows the percent sidechain outliers of the chain as a percentile score with respect to all X-ray entries followed by that with respect to entries of similar resolution.

The Analysed column shows the number of residues for which the sidechain conformation was analysed, and the total number of residues.

Mol	Chain	Analysed	Rotameric	Outliers	Percentiles	
1	A	265/283 (94%)	261 (98%)	4 (2%)	65	59
1	B	270/283 (95%)	264 (98%)	6 (2%)	52	43
All	All	535/566 (94%)	525 (98%)	10 (2%)	57	49

All (10) residues with a non-rotameric sidechain are listed below:

Mol	Chain	Res	Type
1	A	8	GLN
1	A	51	ARG
1	A	79	LEU
1	A	298	PHE
1	B	71	LYS
1	B	79	LEU
1	B	203	SER
1	B	228	LEU

Continued on next page...

Continued from previous page...

Mol	Chain	Res	Type
1	B	269	ASP
1	B	298	PHE

Sometimes sidechains can be flipped to improve hydrogen bonding and reduce clashes. All (1) such sidechains are listed below:

Mol	Chain	Res	Type
1	B	8	GLN

5.3.3 RNA [i](#)

There are no RNA molecules in this entry.

5.4 Non-standard residues in protein, DNA, RNA chains [i](#)

There are no non-standard protein/DNA/RNA residues in this entry.

5.5 Carbohydrates [i](#)

There are no monosaccharides in this entry.

5.6 Ligand geometry [i](#)

Of 10 ligands modelled in this entry, 4 are monoatomic - leaving 6 for Mogul analysis.

In the following table, the Counts columns list the number of bonds (or angles) for which Mogul statistics could be retrieved, the number of bonds (or angles) that are observed in the model and the number of bonds (or angles) that are defined in the Chemical Component Dictionary. The Link column lists molecule types, if any, to which the group is linked. The Z score for a bond length (or angle) is the number of standard deviations the observed value is removed from the expected value. A bond length (or angle) with $|Z| > 2$ is considered an outlier worth inspection. RMSZ is the root-mean-square of all Z scores of the bond lengths (or angles).

Mol	Type	Chain	Res	Link	Bond lengths			Bond angles		
					Counts	RMSZ	$\# Z > 2$	Counts	RMSZ	$\# Z > 2$
5	E9J	B	402	2	11,14,14	1.80	2 (18%)	14,18,18	1.92	6 (42%)
3	NAP	B	405	-	45,52,52	2.76	17 (37%)	56,80,80	2.05	16 (28%)
3	NAP	A	403	-	45,52,52	2.61	15 (33%)	56,80,80	1.83	12 (21%)
4	E9G	A	404[B]	2	11,15,15	1.08	0	12,20,20	3.58	5 (41%)
5	E9J	A	405[A]	2	11,14,14	1.87	2 (18%)	14,18,18	3.10	5 (35%)

Mol	Type	Chain	Res	Link	Bond lengths			Bond angles		
					Counts	RMSZ	$\# Z > 2$	Counts	RMSZ	$\# Z > 2$
4	E9G	B	401[A]	2	11,15,15	0.74	0	12,20,20	1.76	3 (25%)

In the following table, the Chirals column lists the number of chiral outliers, the number of chiral centers analysed, the number of these observed in the model and the number defined in the Chemical Component Dictionary. Similar counts are reported in the Torsion and Rings columns. '-' means no outliers of that kind were identified.

Mol	Type	Chain	Res	Link	Chirals	Torsions	Rings
5	E9J	B	402	2	-	3/8/12/12	0/1/1/1
3	NAP	B	405	-	-	8/31/67/67	0/5/5/5
3	NAP	A	403	-	-	6/31/67/67	0/5/5/5
4	E9G	A	404[B]	2	-	2/10/16/16	0/1/1/1
5	E9J	A	405[A]	2	-	3/8/12/12	0/1/1/1
4	E9G	B	401[A]	2	-	3/10/16/16	0/1/1/1

All (36) bond length outliers are listed below:

Mol	Chain	Res	Type	Atoms	Z	Observed(Å)	Ideal(Å)
3	B	405	NAP	P2B-O2B	10.62	1.79	1.59
3	A	403	NAP	P2B-O2B	10.10	1.78	1.59
3	B	405	NAP	C5N-C4N	6.61	1.52	1.38
3	B	405	NAP	C4N-C3N	5.76	1.49	1.39
3	A	403	NAP	C4N-C3N	5.71	1.49	1.39
5	A	405[A]	E9J	C03-N04	5.66	1.46	1.34
3	A	403	NAP	C5N-C4N	5.40	1.50	1.38
3	B	405	NAP	C2N-N1N	5.40	1.41	1.35
5	B	402	E9J	C03-N04	5.37	1.45	1.34
3	A	403	NAP	C2N-N1N	4.33	1.40	1.35
3	B	405	NAP	C3N-C7N	-3.76	1.44	1.50
3	B	405	NAP	C6N-N1N	3.62	1.44	1.35
3	B	405	NAP	PN-O5D	3.57	1.73	1.59
3	A	403	NAP	C2A-N1A	3.55	1.40	1.33
3	A	403	NAP	C3N-C7N	-3.14	1.45	1.50
3	A	403	NAP	C5B-C4B	3.11	1.61	1.51
3	B	405	NAP	C3D-C4D	2.97	1.60	1.53
3	A	403	NAP	C4A-N3A	2.91	1.39	1.35
3	B	405	NAP	O2B-C2B	-2.86	1.33	1.44
3	B	405	NAP	O2D-C2D	-2.80	1.36	1.43
3	A	403	NAP	O4B-C4B	-2.69	1.39	1.45
3	A	403	NAP	C7N-N7N	2.47	1.37	1.33
3	B	405	NAP	C6N-C5N	-2.44	1.33	1.38

Continued on next page...

Continued from previous page...

Mol	Chain	Res	Type	Atoms	Z	Observed(Å)	Ideal(Å)
3	A	403	NAP	O5B-C5B	-2.39	1.35	1.44
5	A	405[A]	E9J	O13-C03	-2.31	1.18	1.23
3	B	405	NAP	O5D-C5D	-2.31	1.35	1.44
3	A	403	NAP	O2B-C2B	-2.29	1.35	1.44
3	A	403	NAP	PN-O5D	2.24	1.68	1.59
3	A	403	NAP	O3B-C3B	-2.19	1.37	1.43
3	B	405	NAP	O4B-C1B	2.18	1.44	1.41
3	B	405	NAP	C3B-C4B	2.11	1.58	1.53
3	A	403	NAP	C3D-C4D	2.09	1.58	1.53
3	B	405	NAP	C2A-N1A	2.08	1.37	1.33
5	B	402	E9J	O13-C03	-2.06	1.19	1.23
3	B	405	NAP	O4D-C1D	2.05	1.43	1.41
3	B	405	NAP	PA-O5B	2.03	1.67	1.59

All (47) bond angle outliers are listed below:

Mol	Chain	Res	Type	Atoms	Z	Observed(°)	Ideal(°)
4	A	404[B]	E9G	C07-C06-N04	6.94	121.27	110.24
3	B	405	NAP	C5N-C4N-C3N	-6.86	112.22	120.34
5	A	405[A]	E9J	C05-N04-C03	6.78	137.28	122.56
3	A	403	NAP	C5N-C4N-C3N	-6.61	112.52	120.34
4	A	404[B]	E9G	O14-C03-N04	-5.90	113.30	120.62
4	A	404[B]	E9G	C10-C09-C08	-5.48	113.87	120.65
3	B	405	NAP	C2N-C3N-C4N	5.34	124.31	118.26
5	A	405[A]	E9J	C02-C03-N04	5.27	129.15	115.39
3	B	405	NAP	PN-O3-PA	-5.04	115.54	132.83
5	A	405[A]	E9J	C06-C05-N04	4.83	117.57	109.05
5	A	405[A]	E9J	O13-C03-N04	-4.75	113.72	122.45
4	A	404[B]	E9G	C09-C08-C13	4.27	123.61	118.29
3	A	403	NAP	C2N-C3N-C4N	4.00	122.79	118.26
4	B	401[A]	E9G	C07-C06-C08	-3.79	103.69	113.24
3	A	403	NAP	PN-O3-PA	-3.72	120.05	132.83
3	A	403	NAP	C3N-C7N-N7N	3.60	122.07	117.75
3	B	405	NAP	O2B-P2B-O1X	-3.60	95.51	109.39
5	B	402	E9J	C06-C05-N04	-3.57	102.75	109.05
4	A	404[B]	E9G	C11-C10-C09	3.54	125.59	120.19
4	B	401[A]	E9G	C07-C06-N04	-3.35	104.92	110.24
3	B	405	NAP	C3N-C7N-N7N	3.27	121.67	117.75
5	B	402	E9J	C06-C05-C07	-3.25	104.83	112.25
3	A	403	NAP	C3B-C2B-C1B	-3.15	96.98	102.89
3	A	403	NAP	O7N-C7N-N7N	-3.11	118.17	122.58
5	B	402	E9J	C02-C03-N04	2.81	122.71	115.39

Continued on next page...

Continued from previous page...

Mol	Chain	Res	Type	Atoms	Z	Observed(°)	Ideal(°)
3	B	405	NAP	O3X-P2B-O2X	2.75	118.16	107.64
3	B	405	NAP	C6N-N1N-C2N	-2.69	119.52	121.97
3	A	403	NAP	O2B-P2B-O1X	-2.67	99.10	109.39
5	A	405[A]	E9J	C12-C07-C08	2.64	121.58	118.29
3	A	403	NAP	O3X-P2B-O2X	2.60	117.56	107.64
3	B	405	NAP	O2N-PN-O5D	-2.48	96.20	107.75
3	B	405	NAP	O2N-PN-O1N	2.47	124.45	112.24
3	B	405	NAP	PA-O5B-C5B	-2.47	107.21	121.68
5	B	402	E9J	C12-C07-C08	2.39	121.28	118.29
5	B	402	E9J	O13-C03-N04	-2.35	118.14	122.45
3	B	405	NAP	C3N-C2N-N1N	-2.26	118.22	120.43
5	B	402	E9J	C07-C05-N04	2.25	116.52	111.31
3	B	405	NAP	O2X-P2B-O2B	-2.22	96.03	105.99
3	B	405	NAP	O7N-C7N-N7N	-2.16	119.51	122.58
3	A	403	NAP	O3B-C3B-C2B	-2.14	105.10	111.17
3	B	405	NAP	O4D-C1D-C2D	-2.13	103.81	106.93
3	A	403	NAP	C3D-C2D-C1D	-2.13	97.76	100.98
4	B	401[A]	E9G	C08-C06-N04	2.08	117.69	109.85
3	B	405	NAP	O2A-PA-O5B	2.05	117.28	107.75
3	A	403	NAP	PA-O5B-C5B	-2.04	109.69	121.68
3	B	405	NAP	O4B-C4B-C3B	2.04	109.14	105.11
3	A	403	NAP	C3N-C2N-N1N	-2.02	118.46	120.43

There are no chirality outliers.

All (25) torsion outliers are listed below:

Mol	Chain	Res	Type	Atoms
3	A	403	NAP	C2B-O2B-P2B-O1X
3	A	403	NAP	O4D-C1D-N1N-C2N
3	A	403	NAP	O4D-C1D-N1N-C6N
3	A	403	NAP	C2D-C1D-N1N-C6N
3	B	405	NAP	C2B-O2B-P2B-O1X
3	B	405	NAP	O4D-C1D-N1N-C2N
3	B	405	NAP	O4D-C1D-N1N-C6N
3	B	405	NAP	C2D-C1D-N1N-C6N
4	A	404[B]	E9G	C07-C06-N04-C03
4	B	401[A]	E9G	C07-C06-N04-O05
4	B	401[A]	E9G	C08-C06-N04-C03
4	B	401[A]	E9G	C08-C06-N04-O05
5	A	405[A]	E9J	C02-C03-N04-C05
5	A	405[A]	E9J	O13-C03-N04-C05
5	A	405[A]	E9J	C06-C05-N04-C03

Continued on next page...

Continued from previous page...

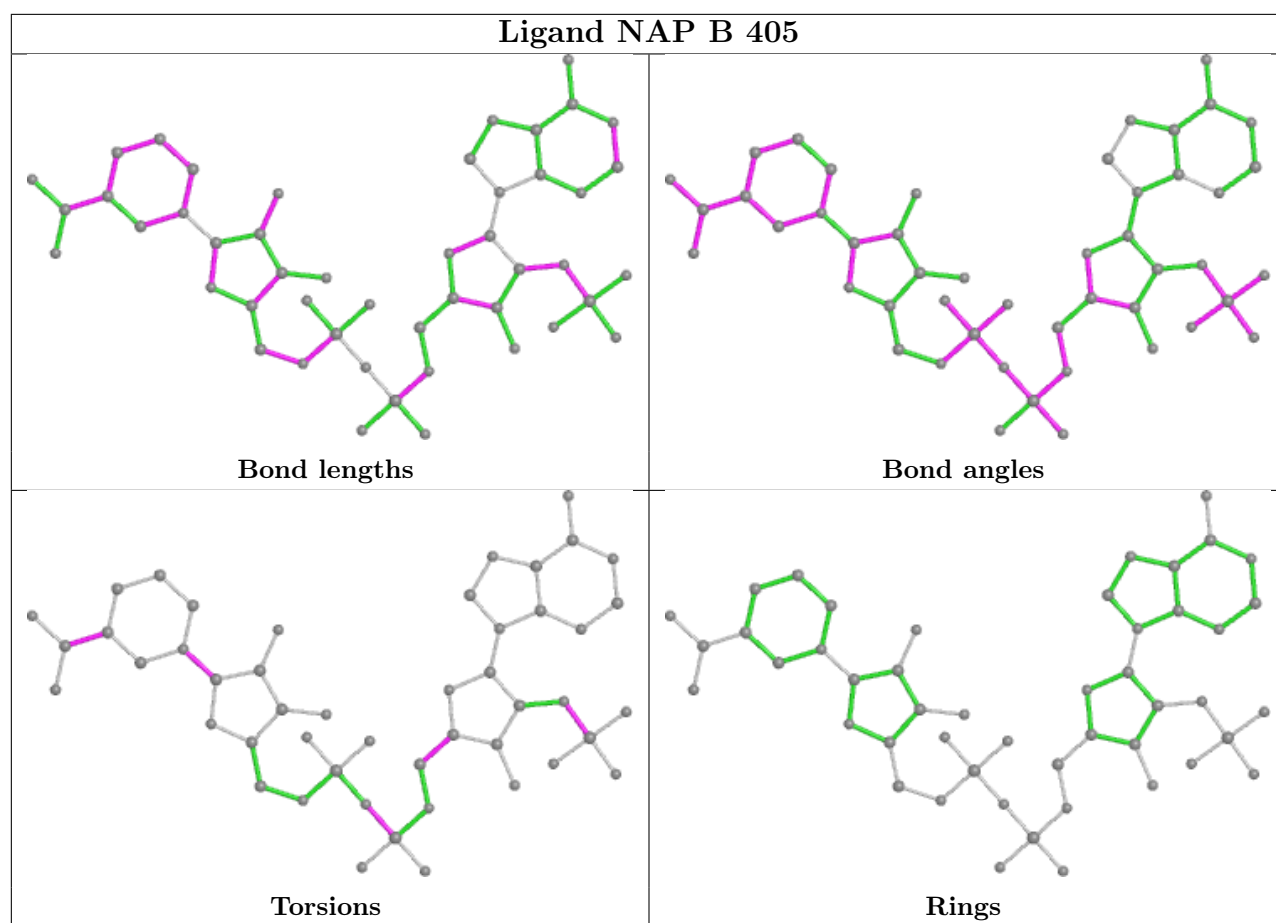
Mol	Chain	Res	Type	Atoms
5	B	402	E9J	C02-C03-N04-C05
5	B	402	E9J	O13-C03-N04-C05
5	B	402	E9J	C07-C05-N04-C03
4	A	404[B]	E9G	C07-C06-N04-O05
3	A	403	NAP	C2B-O2B-P2B-O3X
3	A	403	NAP	O4B-C4B-C5B-O5B
3	B	405	NAP	O4B-C4B-C5B-O5B
3	B	405	NAP	PN-O3-PA-O2A
3	B	405	NAP	C4N-C3N-C7N-O7N
3	B	405	NAP	C2N-C3N-C7N-O7N

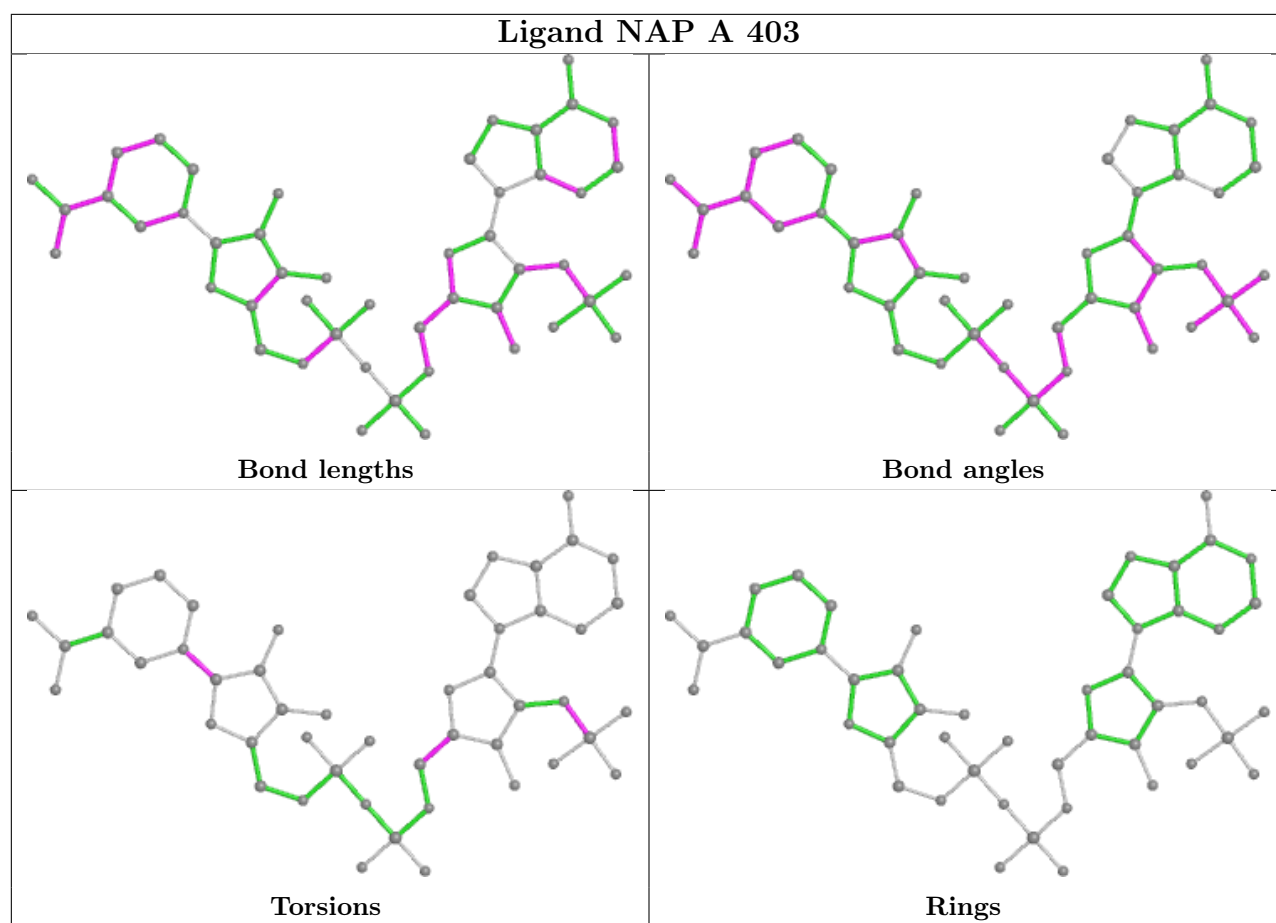
There are no ring outliers.

3 monomers are involved in 5 short contacts:

Mol	Chain	Res	Type	Clashes	Symm-Clashes
3	B	405	NAP	2	0
4	A	404[B]	E9G	2	0
4	B	401[A]	E9G	1	0

The following is a two-dimensional graphical depiction of Mogul quality analysis of bond lengths, bond angles, torsion angles, and ring geometry for all instances of the Ligand of Interest. In addition, ligands with molecular weight > 250 and outliers as shown on the validation Tables will also be included. For torsion angles, if less than 5% of the Mogul distribution of torsion angles is within 10 degrees of the torsion angle in question, then that torsion angle is considered an outlier. Any bond that is central to one or more torsion angles identified as an outlier by Mogul will be highlighted in the graph. For rings, the root-mean-square deviation (RMSD) between the ring in question and similar rings identified by Mogul is calculated over all ring torsion angles. If the average RMSD is greater than 60 degrees and the minimal RMSD between the ring in question and any Mogul-identified rings is also greater than 60 degrees, then that ring is considered an outlier. The outliers are highlighted in purple. The color gray indicates Mogul did not find sufficient equivalents in the CSD to analyse the geometry.





5.7 Other polymers [i](#)

There are no such residues in this entry.

5.8 Polymer linkage issues [i](#)

There are no chain breaks in this entry.

6 Fit of model and data [i](#)

6.1 Protein, DNA and RNA chains [i](#)

In the following table, the column labelled ‘#RSRZ> 2’ contains the number (and percentage) of RSRZ outliers, followed by percent RSRZ outliers for the chain as percentile scores relative to all X-ray entries and entries of similar resolution. The OWAB column contains the minimum, median, 95th percentile and maximum values of the occupancy-weighted average B-factor per residue. The column labelled ‘Q< 0.9’ lists the number of (and percentage) of residues with an average occupancy less than 0.9.

Mol	Chain	Analysed	<RSRZ>	#RSRZ>2	OWAB(Å ²)	Q<0.9
1	A	321/340 (94%)	-0.49	3 (0%) 84 85	16, 24, 41, 60	2 (0%)
1	B	327/340 (96%)	-0.09	12 (3%) 41 43	16, 30, 52, 75	2 (0%)
All	All	648/680 (95%)	-0.29	15 (2%) 60 62	16, 26, 50, 75	4 (0%)

All (15) RSRZ outliers are listed below:

Mol	Chain	Res	Type	RSRZ
1	B	328	LYS	5.3
1	B	58	GLU	4.9
1	A	2	THR	4.8
1	B	2	THR	4.6
1	B	325	PRO	3.3
1	B	51	ARG	3.3
1	B	309	HIS	3.2
1	B	143	GLY	3.1
1	A	248	TYR	3.0
1	B	141	VAL	2.7
1	B	327	ILE	2.4
1	A	309	HIS	2.2
1	B	54	ASP	2.2
1	B	61	PHE	2.1
1	B	40	GLY	2.1

6.2 Non-standard residues in protein, DNA, RNA chains [i](#)

There are no non-standard protein/DNA/RNA residues in this entry.

6.3 Carbohydrates [i](#)

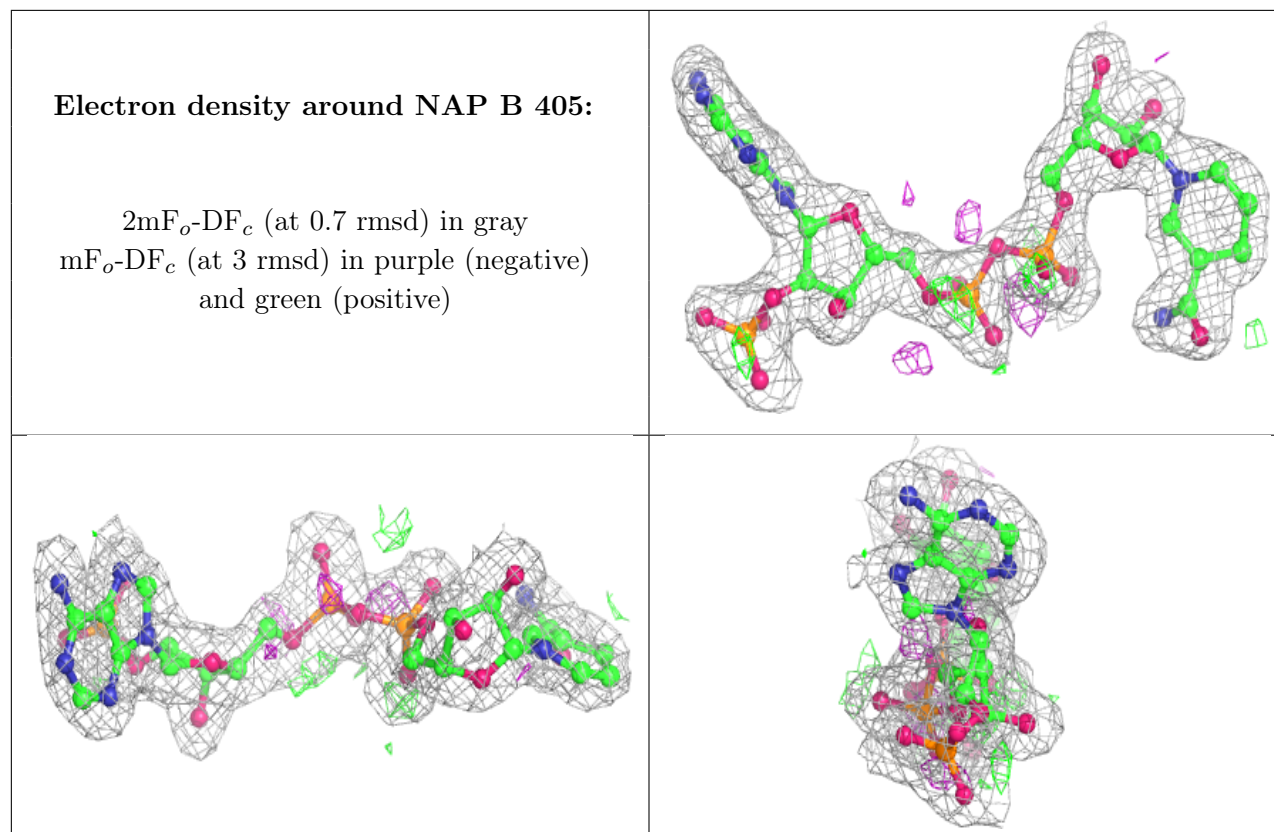
There are no monosaccharides in this entry.

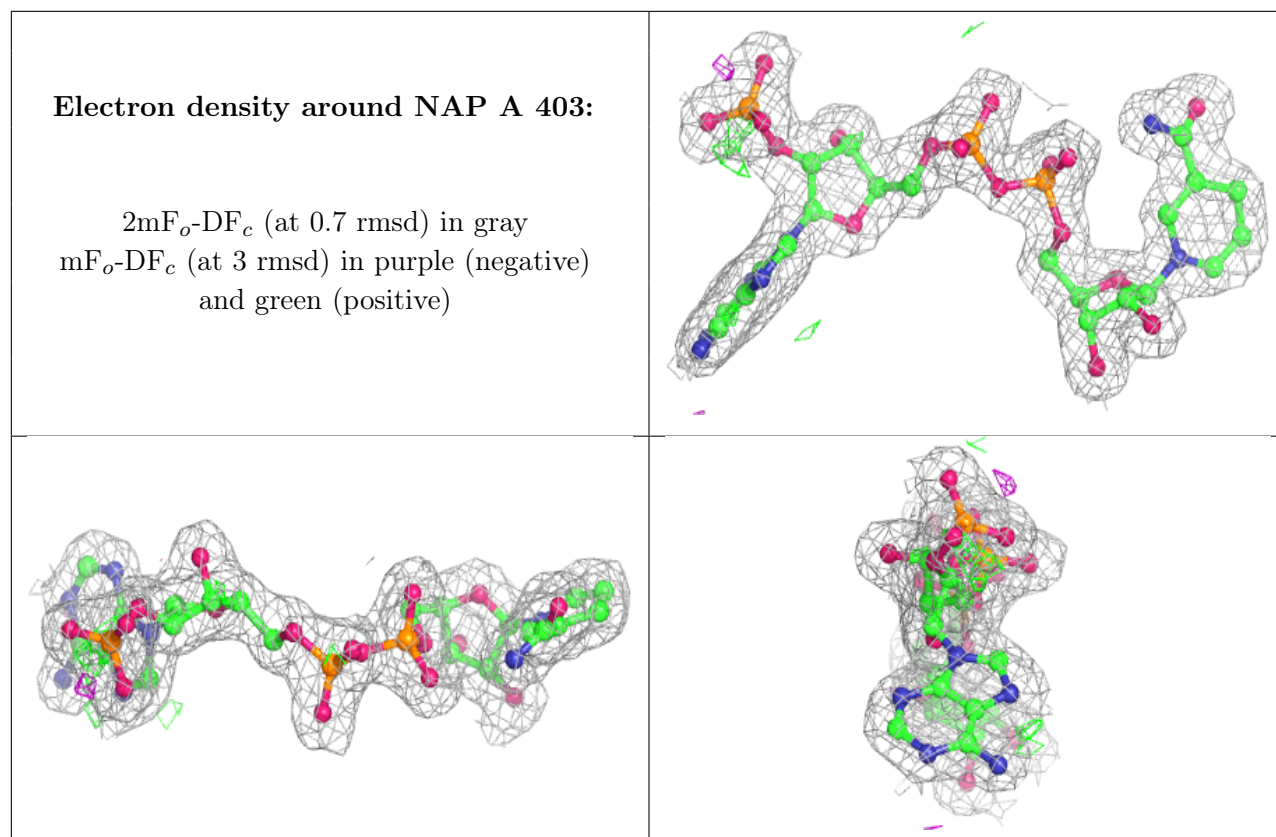
6.4 Ligands ⓘ

In the following table, the Atoms column lists the number of modelled atoms in the group and the number defined in the chemical component dictionary. The B-factors column lists the minimum, median, 95th percentile and maximum values of B factors of atoms in the group. The column labelled 'Q< 0.9' lists the number of atoms with occupancy less than 0.9.

Mol	Type	Chain	Res	Atoms	RSCC	RSR	B-factors(Å ²)	Q<0.9
4	E9G	B	401[A]	15/15	0.92	0.14	24,43,51,52	15
5	E9J	B	402	14/14	0.93	0.13	25,46,52,53	14
4	E9G	A	404[B]	15/15	0.94	0.16	19,28,35,37	15
3	NAP	B	405	48/48	0.95	0.08	19,36,43,48	0
5	E9J	A	405[A]	14/14	0.96	0.15	17,28,35,37	14
2	MG	B	404	1/1	0.96	0.06	30,30,30,30	0
3	NAP	A	403	48/48	0.98	0.09	15,21,27,31	0
2	MG	A	402	1/1	0.98	0.04	23,23,23,23	0
2	MG	A	401	1/1	0.98	0.06	17,17,17,17	0
2	MG	B	403	1/1	0.99	0.08	21,21,21,21	0

The following is a graphical depiction of the model fit to experimental electron density of all instances of the Ligand of Interest. In addition, ligands with molecular weight > 250 and outliers as shown on the geometry validation Tables will also be included. Each fit is shown from different orientation to approximate a three-dimensional view.





6.5 Other polymers [i](#)

There are no such residues in this entry.