



Full wwPDB X-ray Structure Validation Report ⓘ

May 23, 2020 – 12:59 am BST

PDB ID : 6BY0
Title : Crystal structure of catalase HP11 from E. coli in space group P1
Authors : Lisa, M.N.; Buschiazzi, A.
Deposited on : 2017-12-19
Resolution : 2.93 Å(reported)

This is a Full wwPDB X-ray Structure Validation Report for a publicly released PDB entry.

We welcome your comments at validation@mail.wwpdb.org

A user guide is available at

<https://www.wwpdb.org/validation/2017/XrayValidationReportHelp>

with specific help available everywhere you see the ⓘ symbol.

The following versions of software and data (see [references ⓘ](#)) were used in the production of this report:

MolProbity : 4.02b-467
Mogul : 1.8.5 (274361), CSD as541be (2020)
Xtriage (Phenix) : 1.13
EDS : 2.11
buster-report : 1.1.7 (2018)
Percentile statistics : 20191225.v01 (using entries in the PDB archive December 25th 2019)
Refmac : 5.8.0158
CCP4 : 7.0.044 (Gargrove)
Ideal geometry (proteins) : Engh & Huber (2001)
Ideal geometry (DNA, RNA) : Parkinson et al. (1996)
Validation Pipeline (wwPDB-VP) : 2.11

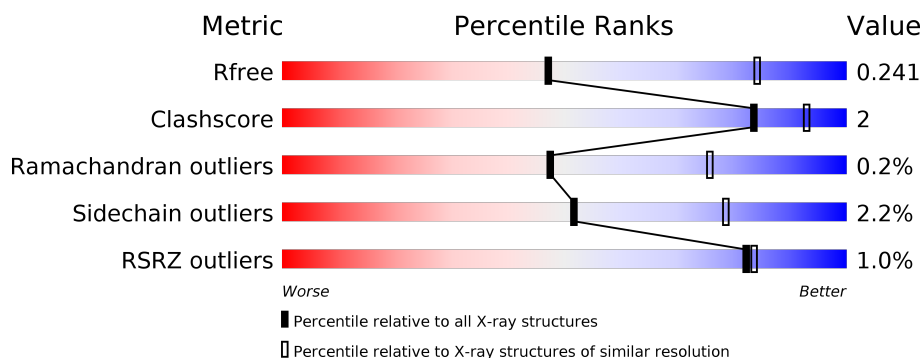
1 Overall quality at a glance

The following experimental techniques were used to determine the structure:

X-RAY DIFFRACTION

The reported resolution of this entry is 2.93 Å.

Percentile scores (ranging between 0-100) for global validation metrics of the entry are shown in the following graphic. The table shows the number of entries on which the scores are based.



Metric	Whole archive (#Entries)	Similar resolution (#Entries, resolution range(Å))
R_{free}	130704	2969 (2.98-2.90)
Clashscore	141614	3218 (2.98-2.90)
Ramachandran outliers	138981	3122 (2.98-2.90)
Sidechain outliers	138945	3124 (2.98-2.90)
RSRZ outliers	127900	2902 (2.98-2.90)

The table below summarises the geometric issues observed across the polymeric chains and their fit to the electron density. The red, orange, yellow and green segments on the lower bar indicate the fraction of residues that contain outliers for ≥ 3 , 2, 1 and 0 types of geometric quality criteria respectively. A grey segment represents the fraction of residues that are not modelled. The numeric value for each fraction is indicated below the corresponding segment, with a dot representing fractions $\leq 5\%$. The upper red bar (where present) indicates the fraction of residues that have poor fit to the electron density. The numeric value is given above the bar.

Mol	Chain	Length	Quality of chain
1	A	753	<div> <div>90%</div> <div>6%</div> <div>.</div> </div>
1	B	753	<div> <div>2%</div> <div>88%</div> <div>7%</div> <div>..</div> </div>
1	C	753	<div> <div>88%</div> <div>7%</div> <div>.</div> </div>
1	D	753	<div> <div>%</div> <div>89%</div> <div>7%</div> <div>.</div> </div>

2 Entry composition [i](#)

There are 3 unique types of molecules in this entry. The entry contains 23669 atoms, of which 0 are hydrogens and 0 are deuteriums.

In the tables below, the ZeroOcc column contains the number of atoms modelled with zero occupancy, the AltConf column contains the number of residues with at least one atom in alternate conformation and the Trace column contains the number of residues modelled with at most 2 atoms.

- Molecule 1 is a protein called Catalase HPIL.

Mol	Chain	Residues	Atoms					ZeroOcc	AltConf	Trace
1	A	726	Total	C	N	O	S	0	0	0
			5738	3643	1004	1079	12			
1	B	721	Total	C	N	O	S	0	0	0
			5706	3626	998	1070	12			
1	C	722	Total	C	N	O	S	0	0	0
			5712	3629	999	1072	12			
1	D	726	Total	C	N	O	S	0	0	0
			5738	3643	1004	1079	12			

- Molecule 2 is PROTOPORPHYRIN IX CONTAINING FE (three-letter code: HEM) (formula: $C_{34}H_{32}FeN_4O_4$).



Continued from previous page...

Mol	Chain	Residues	Atoms					ZeroOcc	AltConf
2	C	1	Total 43	C 34	Fe 1	N 4	O 4	0	0
2	D	1	Total 43	C 34	Fe 1	N 4	O 4	0	0

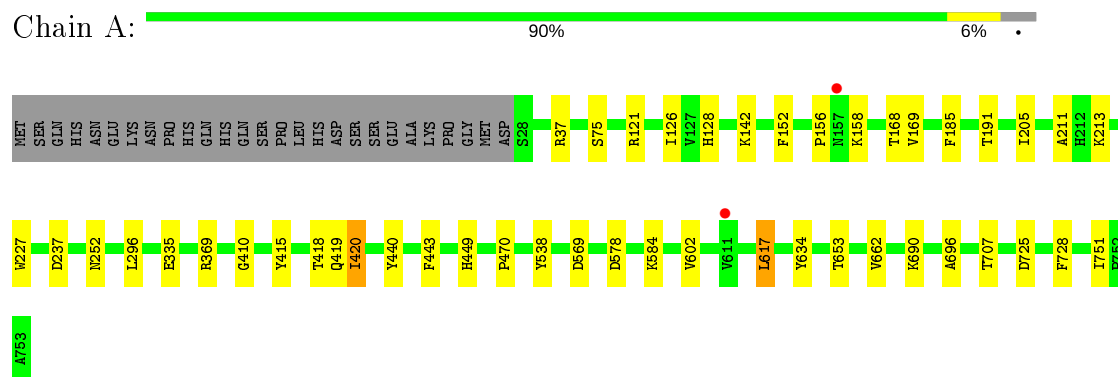
- Molecule 3 is water.

Mol	Chain	Residues	Atoms		ZeroOcc	AltConf
3	A	156	Total 156	O 156	0	0
3	B	150	Total 150	O 150	0	0
3	C	153	Total 153	O 153	0	0
3	D	144	Total 144	O 144	0	0

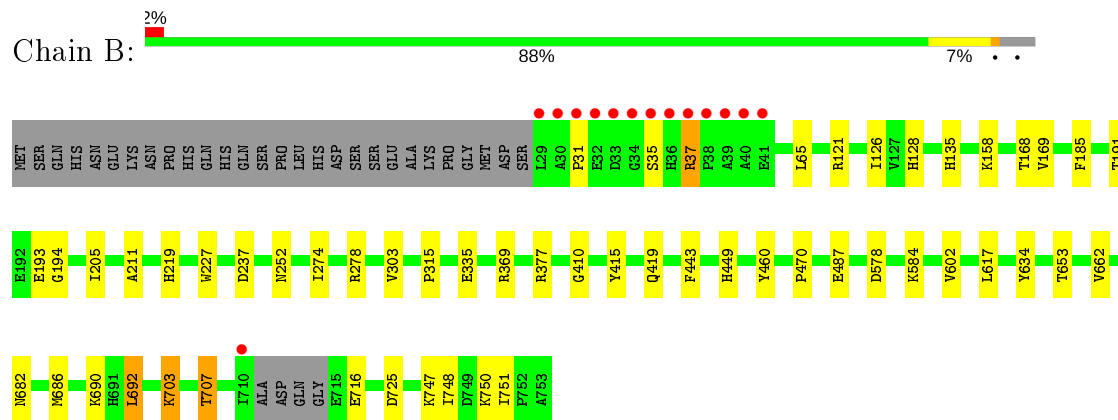
3 Residue-property plots [i](#)

These plots are drawn for all protein, RNA and DNA chains in the entry. The first graphic for a chain summarises the proportions of the various outlier classes displayed in the second graphic. The second graphic shows the sequence view annotated by issues in geometry and electron density. Residues are color-coded according to the number of geometric quality criteria for which they contain at least one outlier: green = 0, yellow = 1, orange = 2 and red = 3 or more. A red dot above a residue indicates a poor fit to the electron density ($RSRZ > 2$). Stretches of 2 or more consecutive residues without any outlier are shown as a green connector. Residues present in the sample, but not in the model, are shown in grey.

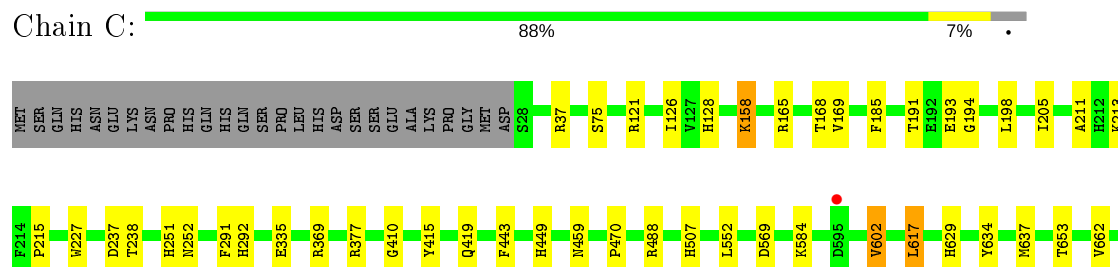
• Molecule 1: Catalase HP1I



• Molecule 1: Catalase HP1I

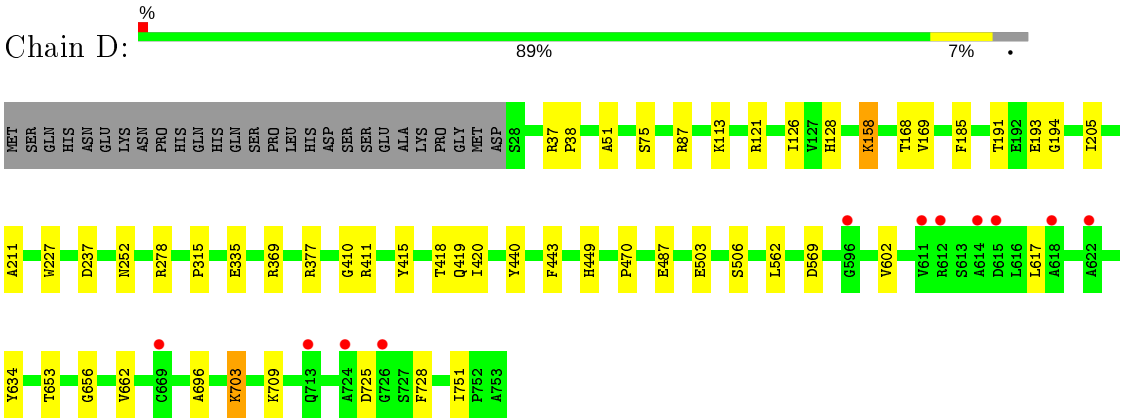


• Molecule 1: Catalase HP1I





● Molecule 1: Catalase HPII



4 Data and refinement statistics

Property	Value	Source
Space group	P 1	Depositor
Cell constants a, b, c, α , β , γ	69.34Å 90.14Å 114.76Å 107.10° 105.60° 95.98°	Depositor
Resolution (Å)	49.39 – 2.93 49.39 – 2.93	Depositor EDS
% Data completeness (in resolution range)	98.5 (49.39-2.93) 98.5 (49.39-2.93)	Depositor EDS
R_{merge}	0.17	Depositor
R_{sym}	(Not available)	Depositor
$\langle I/\sigma(I) \rangle$ ¹	1.80 (at 2.91Å)	Xtriage
Refinement program	BUSTER 2.10.2	Depositor
R, R_{free}	0.183 , 0.236 0.188 , 0.241	Depositor DCC
R_{free} test set	2598 reflections (4.90%)	wwPDB-VP
Wilson B-factor (Å ²)	19.7	Xtriage
Anisotropy	1.915	Xtriage
Bulk solvent k_{sol} (e/Å ³), B_{sol} (Å ²)	0.32 , 40.1	EDS
L-test for twinning ²	$\langle L \rangle = 0.50$, $\langle L^2 \rangle = 0.33$	Xtriage
Estimated twinning fraction	No twinning to report.	Xtriage
F_o, F_c correlation	0.93	EDS
Total number of atoms	23669	wwPDB-VP
Average B, all atoms (Å ²)	24.0	wwPDB-VP

Xtriage's analysis on translational NCS is as follows: *The largest off-origin peak in the Patterson function is 4.30% of the height of the origin peak. No significant pseudotranslation is detected.*

¹Intensities estimated from amplitudes.

²Theoretical values of $\langle |L| \rangle$, $\langle L^2 \rangle$ for acentric reflections are 0.5, 0.333 respectively for untwinned datasets, and 0.375, 0.2 for perfectly twinned datasets.

5 Model quality [i](#)

5.1 Standard geometry [i](#)

Bond lengths and bond angles in the following residue types are not validated in this section: HEM

The Z score for a bond length (or angle) is the number of standard deviations the observed value is removed from the expected value. A bond length (or angle) with $|Z| > 5$ is considered an outlier worth inspection. RMSZ is the root-mean-square of all Z scores of the bond lengths (or angles).

Mol	Chain	Bond lengths		Bond angles	
		RMSZ	$\# Z > 5$	RMSZ	$\# Z > 5$
1	A	0.49	0/5894	0.63	0/8013
1	B	0.50	0/5861	0.64	0/7967
1	C	0.50	0/5867	0.64	0/7975
1	D	0.49	0/5894	0.63	0/8013
All	All	0.50	0/23516	0.64	0/31968

There are no bond length outliers.

There are no bond angle outliers.

There are no chirality outliers.

There are no planarity outliers.

5.2 Too-close contacts [i](#)

In the following table, the Non-H and H(model) columns list the number of non-hydrogen atoms and hydrogen atoms in the chain respectively. The H(added) column lists the number of hydrogen atoms added and optimized by MolProbity. The Clashes column lists the number of clashes within the asymmetric unit, whereas Symm-Clashes lists symmetry related clashes.

Mol	Chain	Non-H	H(model)	H(added)	Clashes	Symm-Clashes
1	A	5738	0	5574	25	0
1	B	5706	0	5548	34	0
1	C	5712	0	5553	30	0
1	D	5738	0	5574	30	0
2	A	43	0	30	2	0
2	B	43	0	30	4	0
2	C	43	0	30	2	0
2	D	43	0	30	4	0
3	A	156	0	0	4	0

Continued on next page...

Continued from previous page...

Mol	Chain	Non-H	H(model)	H(added)	Clashes	Symm-Clashes
3	B	150	0	0	3	0
3	C	153	0	0	3	0
3	D	144	0	0	3	0
All	All	23669	0	22369	110	0

The all-atom clashscore is defined as the number of clashes found per 1000 atoms (including hydrogen atoms). The all-atom clashscore for this structure is 2.

All (110) close contacts within the same asymmetric unit are listed below, sorted by their clash magnitude.

Atom-1	Atom-2	Interatomic distance (Å)	Clash overlap (Å)
1:C:415:TYR:O	1:C:419:GLN:HG2	1.66	0.95
1:D:415:TYR:O	1:D:419:GLN:HG2	1.67	0.93
1:B:415:TYR:O	1:B:419:GLN:HG2	1.68	0.93
1:D:418:THR:HG21	2:D:801:HEM:HBD1	1.66	0.76
1:B:747:LYS:HB3	1:B:750:LYS:HE3	1.68	0.75
1:C:686:MET:HG2	1:C:708:ILE:HG22	1.68	0.75
1:A:415:TYR:O	1:A:419:GLN:HG2	1.87	0.74
1:A:121:ARG:HG2	1:B:126:ILE:HD13	1.72	0.72
1:A:578:ASP:HB2	3:A:1019:HOH:O	1.92	0.70
1:D:418:THR:HG21	2:D:801:HEM:CBD	2.22	0.68
1:A:152:PHE:HB3	1:A:191:THR:HG23	1.77	0.65
1:A:690:LYS:HB2	1:A:751:ILE:HD11	1.78	0.63
1:A:420:ILE:HD11	1:D:420:ILE:HG22	1.80	0.63
1:C:191:THR:HB	1:C:194:GLY:O	2.00	0.62
1:A:418:THR:HG21	2:A:801:HEM:HBD1	1.82	0.62
1:D:411:ARG:HA	2:D:801:HEM:HBC2	1.81	0.61
1:B:747:LYS:HB2	3:B:1013:HOH:O	2.01	0.61
1:C:602:VAL:HG23	1:C:629:HIS:HB2	1.83	0.61
1:A:142:LYS:HA	1:A:156:PRO:HG3	1.82	0.60
1:A:296:LEU:HB3	3:A:1038:HOH:O	2.00	0.60
1:C:690:LYS:HB2	1:C:751:ILE:HD11	1.83	0.60
1:A:126:ILE:HD13	1:B:121:ARG:HG2	1.84	0.59
1:B:748:ILE:O	1:B:751:ILE:HG13	2.03	0.59
1:D:709:LYS:HD2	1:D:751:ILE:HD13	1.85	0.59
1:C:121:ARG:HG2	1:D:126:ILE:HD13	1.85	0.58
1:B:191:THR:HG22	1:B:193:GLU:H	1.68	0.57
1:C:710:ILE:HG12	1:C:715:GLU:HB2	1.87	0.56
1:C:126:ILE:HD13	1:D:121:ARG:HG2	1.88	0.55
1:C:165:ARG:HD3	2:C:801:HEM:O2A	2.06	0.54
3:B:932:HOH:O	1:D:87:ARG:HB3	2.07	0.54

Continued on next page...

Continued from previous page...

Atom-1	Atom-2	Interatomic distance (Å)	Clash overlap (Å)
1:C:191:THR:HG22	1:C:193:GLU:H	1.72	0.53
1:A:602:VAL:HG13	1:A:662:VAL:HA	1.91	0.53
1:A:152:PHE:HB3	1:A:191:THR:CG2	2.40	0.52
1:D:191:THR:HB	1:D:194:GLY:O	2.10	0.51
1:B:682:ASN:HB3	1:B:707:THR:HG21	1.92	0.51
1:B:335:GLU:OE1	1:B:369:ARG:HG2	2.12	0.50
1:A:205:ILE:HD11	1:A:252:ASN:N	2.25	0.50
1:B:191:THR:HB	1:B:194:GLY:O	2.10	0.50
1:B:205:ILE:HD11	1:B:252:ASN:N	2.26	0.50
1:B:686:MET:CE	1:B:707:THR:HG22	2.41	0.50
1:B:716:GLU:H	1:B:716:GLU:CD	2.14	0.50
1:D:602:VAL:HG13	1:D:662:VAL:HA	1.94	0.50
2:D:801:HEM:HAA1	3:D:921:HOH:O	2.12	0.50
1:A:443:PHE:CZ	1:A:470:PRO:HD2	2.48	0.49
3:C:949:HOH:O	1:D:656:GLY:HA3	2.10	0.49
1:C:715:GLU:HG2	1:C:716:GLU:OE1	2.13	0.48
1:A:211:ALA:CB	1:A:410:GLY:HA3	2.44	0.48
1:B:443:PHE:CZ	1:B:470:PRO:HD2	2.49	0.48
1:C:211:ALA:CB	1:C:410:GLY:HA3	2.44	0.48
1:C:415:TYR:O	1:C:419:GLN:CG	2.50	0.48
1:C:725:ASP:H	1:C:728:PHE:HB3	1.78	0.47
1:C:602:VAL:HG13	1:C:662:VAL:HG12	1.96	0.47
1:C:251:HIS:CE1	1:C:507:HIS:HB3	2.50	0.47
1:A:696:ALA:HB1	1:A:728:PHE:CZ	2.50	0.47
1:D:191:THR:HG22	1:D:193:GLU:H	1.80	0.46
1:D:211:ALA:CB	1:D:410:GLY:HA3	2.45	0.46
1:A:335:GLU:OE1	1:A:369:ARG:HG2	2.15	0.46
1:C:443:PHE:CZ	1:C:470:PRO:HD2	2.51	0.45
1:C:634:TYR:O	1:C:653:THR:HA	2.15	0.45
1:C:617:LEU:HG	3:C:1008:HOH:O	2.15	0.45
1:B:315:PRO:HB2	3:B:982:HOH:O	2.16	0.45
1:B:602:VAL:HG13	1:B:662:VAL:HA	1.97	0.45
1:A:420:ILE:HD11	1:D:420:ILE:CG2	2.47	0.45
1:A:617:LEU:HD12	3:A:1026:HOH:O	2.17	0.44
1:D:335:GLU:OE1	1:D:369:ARG:HG2	2.16	0.44
2:A:801:HEM:HAA1	3:A:954:HOH:O	2.16	0.44
1:C:205:ILE:HD11	1:C:252:ASN:N	2.32	0.44
1:C:198:LEU:HD11	1:C:291:PHE:CD2	2.52	0.44
1:D:634:TYR:O	1:D:653:THR:HA	2.17	0.44
1:D:205:ILE:HD11	1:D:252:ASN:N	2.33	0.44
1:B:634:TYR:O	1:B:653:THR:HA	2.17	0.44

Continued on next page...

Continued from previous page...

Atom-1	Atom-2	Interatomic distance (Å)	Clash overlap (Å)
2:B:801:HEM:HMB1	2:B:801:HEM:HBB2	2.00	0.44
1:C:637:MET:HB2	1:D:562:LEU:HA	1.99	0.44
1:A:128:HIS:CE1	1:A:169:VAL:HG22	2.53	0.44
1:B:274:ILE:HD12	2:B:801:HEM:HBB2	2.00	0.44
1:C:215:PRO:HG2	1:D:113:LYS:HG2	2.00	0.43
1:B:219:HIS:HB3	1:C:459:ASN:OD1	2.19	0.43
1:D:38:PRO:HG2	1:D:51:ALA:HB2	1.99	0.43
1:A:538:TYR:CD1	1:B:31:PRO:HG3	2.53	0.43
1:C:128:HIS:CE1	1:C:169:VAL:HG22	2.53	0.43
1:C:158:LYS:HB2	1:C:158:LYS:HE2	1.90	0.43
1:A:128:HIS:HA	1:A:168:THR:O	2.19	0.43
1:D:315:PRO:HB2	3:D:911:HOH:O	2.18	0.43
1:D:703:LYS:HD3	1:D:703:LYS:HA	1.90	0.43
1:D:503:GLU:HA	3:D:961:HOH:O	2.17	0.43
1:B:211:ALA:CB	1:B:410:GLY:HA3	2.49	0.43
1:B:37:ARG:HE	1:B:37:ARG:HB2	1.71	0.42
1:D:158:LYS:HE2	1:D:158:LYS:HB2	1.80	0.42
1:A:634:TYR:O	1:A:653:THR:HA	2.18	0.42
1:B:128:HIS:HA	1:B:168:THR:O	2.19	0.42
1:D:443:PHE:CZ	1:D:470:PRO:HD2	2.54	0.42
1:B:690:LYS:HB2	1:B:751:ILE:HD11	2.01	0.42
1:D:278:ARG:HH12	1:D:487:GLU:CD	2.23	0.42
1:B:703:LYS:HD3	1:B:703:LYS:HA	1.91	0.41
1:D:696:ALA:HB1	1:D:728:PHE:CZ	2.55	0.41
1:A:538:TYR:CE2	1:B:31:PRO:HD3	2.56	0.41
1:D:128:HIS:CE1	1:D:169:VAL:HG22	2.56	0.41
1:A:121:ARG:CG	1:B:126:ILE:HD13	2.47	0.41
1:B:303:VAL:HG11	1:B:692:LEU:HD22	2.03	0.41
2:C:801:HEM:CMC	2:C:801:HEM:HBC2	2.50	0.41
1:B:460:TYR:CE1	1:C:238:THR:HB	2.56	0.41
1:B:278:ARG:HH12	1:B:487:GLU:CD	2.25	0.41
1:C:292:HIS:HB3	3:C:1040:HOH:O	2.20	0.41
1:D:128:HIS:HA	1:D:168:THR:O	2.20	0.41
1:C:128:HIS:HA	1:C:168:THR:O	2.21	0.41
1:B:128:HIS:CE1	1:B:169:VAL:HG22	2.55	0.40
1:B:274:ILE:HD12	2:B:801:HEM:HMB1	2.03	0.40
1:C:335:GLU:OE1	1:C:369:ARG:HG2	2.21	0.40
1:B:274:ILE:HD12	2:B:801:HEM:CBB	2.51	0.40
1:B:65:LEU:HD21	1:B:135:HIS:CD2	2.57	0.40

There are no symmetry-related clashes.

5.3 Torsion angles

5.3.1 Protein backbone

In the following table, the Percentiles column shows the percent Ramachandran outliers of the chain as a percentile score with respect to all X-ray entries followed by that with respect to entries of similar resolution.

The Analysed column shows the number of residues for which the backbone conformation was analysed, and the total number of residues.

Mol	Chain	Analysed	Favoured	Allowed	Outliers	Percentiles	
1	A	724/753 (96%)	709 (98%)	13 (2%)	2 (0%)	41	69
1	B	717/753 (95%)	704 (98%)	12 (2%)	1 (0%)	51	80
1	C	718/753 (95%)	701 (98%)	16 (2%)	1 (0%)	51	80
1	D	724/753 (96%)	707 (98%)	15 (2%)	2 (0%)	41	69
All	All	2883/3012 (96%)	2821 (98%)	56 (2%)	6 (0%)	47	76

All (6) Ramachandran outliers are listed below:

Mol	Chain	Res	Type
1	A	725	ASP
1	B	725	ASP
1	D	725	ASP
1	C	75	SER
1	D	75	SER
1	A	75	SER

5.3.2 Protein sidechains

In the following table, the Percentiles column shows the percent sidechain outliers of the chain as a percentile score with respect to all X-ray entries followed by that with respect to entries of similar resolution.

The Analysed column shows the number of residues for which the sidechain conformation was analysed, and the total number of residues.

Mol	Chain	Analysed	Rotameric	Outliers	Percentiles	
1	A	611/636 (96%)	598 (98%)	13 (2%)	53	79
1	B	608/636 (96%)	594 (98%)	14 (2%)	50	78
1	C	609/636 (96%)	594 (98%)	15 (2%)	47	76
1	D	611/636 (96%)	599 (98%)	12 (2%)	55	80

Continued on next page...

Continued from previous page...

Mol	Chain	Analysed	Rotameric	Outliers	Percentiles
All	All	2439/2544 (96%)	2385 (98%)	54 (2%)	52 78

All (54) residues with a non-rotameric sidechain are listed below:

Mol	Chain	Res	Type
1	A	37	ARG
1	A	158	LYS
1	A	185	PHE
1	A	213	LYS
1	A	227	TRP
1	A	237	ASP
1	A	420	ILE
1	A	440	TYR
1	A	449	HIS
1	A	569	ASP
1	A	584	LYS
1	A	617	LEU
1	A	707	THR
1	B	35	SER
1	B	37	ARG
1	B	158	LYS
1	B	185	PHE
1	B	227	TRP
1	B	237	ASP
1	B	377	ARG
1	B	449	HIS
1	B	578	ASP
1	B	584	LYS
1	B	617	LEU
1	B	692	LEU
1	B	703	LYS
1	B	707	THR
1	C	37	ARG
1	C	158	LYS
1	C	185	PHE
1	C	213	LYS
1	C	227	TRP
1	C	237	ASP
1	C	377	ARG
1	C	449	HIS
1	C	488	ARG
1	C	552	LEU

Continued on next page...

Continued from previous page...

Mol	Chain	Res	Type
1	C	569	ASP
1	C	584	LYS
1	C	602	VAL
1	C	617	LEU
1	C	707	THR
1	D	37	ARG
1	D	158	LYS
1	D	185	PHE
1	D	227	TRP
1	D	237	ASP
1	D	377	ARG
1	D	440	TYR
1	D	449	HIS
1	D	506	SER
1	D	569	ASP
1	D	617	LEU
1	D	703	LYS

Some sidechains can be flipped to improve hydrogen bonding and reduce clashes. All (1) such sidechains are listed below:

Mol	Chain	Res	Type
1	C	466	ASN

5.3.3 RNA [i](#)

There are no RNA molecules in this entry.

5.4 Non-standard residues in protein, DNA, RNA chains [i](#)

There are no non-standard protein/DNA/RNA residues in this entry.

5.5 Carbohydrates [i](#)

There are no carbohydrates in this entry.

5.6 Ligand geometry [i](#)

4 ligands are modelled in this entry.

In the following table, the Counts columns list the number of bonds (or angles) for which Mogul statistics could be retrieved, the number of bonds (or angles) that are observed in the model and the number of bonds (or angles) that are defined in the Chemical Component Dictionary. The Link column lists molecule types, if any, to which the group is linked. The Z score for a bond length (or angle) is the number of standard deviations the observed value is removed from the expected value. A bond length (or angle) with $|Z| > 2$ is considered an outlier worth inspection. RMSZ is the root-mean-square of all Z scores of the bond lengths (or angles).

Mol	Type	Chain	Res	Link	Bond lengths			Bond angles		
					Counts	RMSZ	# $ Z > 2$	Counts	RMSZ	# $ Z > 2$
2	HEM	C	801	1	27,50,50	2.14	6 (22%)	17,82,82	3.78	8 (47%)
2	HEM	B	801	1	27,50,50	2.09	6 (22%)	17,82,82	4.22	8 (47%)
2	HEM	D	801	1	27,50,50	2.23	9 (33%)	17,82,82	2.83	7 (41%)
2	HEM	A	801	1	27,50,50	1.99	8 (29%)	17,82,82	3.10	5 (29%)

In the following table, the Chirals column lists the number of chiral outliers, the number of chiral centers analysed, the number of these observed in the model and the number defined in the Chemical Component Dictionary. Similar counts are reported in the Torsion and Rings columns. '-' means no outliers of that kind were identified.

Mol	Type	Chain	Res	Link	Chirals	Torsions	Rings
2	HEM	C	801	1	-	0/6/54/54	-
2	HEM	B	801	1	-	0/6/54/54	-
2	HEM	D	801	1	-	3/6/54/54	-
2	HEM	A	801	1	-	0/6/54/54	-

All (29) bond length outliers are listed below:

Mol	Chain	Res	Type	Atoms	Z	Observed(Å)	Ideal(Å)
2	C	801	HEM	CAD-C3D	-6.92	1.40	1.52
2	D	801	HEM	C3B-C2B	-6.81	1.30	1.40
2	B	801	HEM	CAD-C3D	-6.80	1.40	1.52
2	A	801	HEM	CAD-C3D	-6.12	1.41	1.52
2	C	801	HEM	CAA-C2A	5.28	1.59	1.52
2	D	801	HEM	C1B-C2B	-4.31	1.32	1.42
2	A	801	HEM	C4D-C3D	4.17	1.52	1.42
2	B	801	HEM	C3B-C2B	-3.96	1.34	1.40
2	D	801	HEM	CAD-C3D	-3.40	1.46	1.52
2	B	801	HEM	C3C-CAC	3.25	1.54	1.47
2	B	801	HEM	C3D-C2D	-3.02	1.28	1.37
2	A	801	HEM	C3B-C2B	-2.90	1.36	1.40
2	C	801	HEM	C4D-C3D	2.84	1.49	1.42
2	C	801	HEM	C4B-CHC	-2.79	1.33	1.41

Continued on next page...

Continued from previous page...

Mol	Chain	Res	Type	Atoms	Z	Observed(Å)	Ideal(Å)
2	D	801	HEM	C2A-C3A	-2.77	1.29	1.37
2	D	801	HEM	CMC-C2C	2.70	1.58	1.51
2	B	801	HEM	C4D-C3D	2.69	1.48	1.42
2	D	801	HEM	C1C-C2C	2.67	1.48	1.42
2	C	801	HEM	C1D-CHD	-2.60	1.33	1.41
2	D	801	HEM	C4D-C3D	2.58	1.48	1.42
2	B	801	HEM	C4B-NB	-2.57	1.30	1.36
2	A	801	HEM	C3C-C2C	-2.45	1.37	1.40
2	A	801	HEM	CAA-C2A	2.43	1.55	1.52
2	A	801	HEM	C3B-CAB	2.20	1.52	1.47
2	A	801	HEM	C1D-CHD	-2.14	1.35	1.41
2	D	801	HEM	C3C-C2C	-2.06	1.37	1.40
2	A	801	HEM	C1D-ND	2.06	1.40	1.36
2	D	801	HEM	CMB-C2B	-2.05	1.46	1.51
2	C	801	HEM	CMD-C2D	-2.00	1.47	1.51

All (28) bond angle outliers are listed below:

Mol	Chain	Res	Type	Atoms	Z	Observed(°)	Ideal(°)
2	A	801	HEM	CBD-CAD-C3D	-10.22	93.65	112.48
2	B	801	HEM	C1D-C2D-C3D	-9.28	100.54	107.00
2	C	801	HEM	CBD-CAD-C3D	-9.23	95.48	112.48
2	B	801	HEM	CBD-CAD-C3D	-8.84	96.19	112.48
2	C	801	HEM	CAD-CBD-CGD	-8.44	98.51	112.67
2	B	801	HEM	CAD-CBD-CGD	-8.06	99.15	112.67
2	D	801	HEM	C1D-C2D-C3D	-7.88	101.51	107.00
2	C	801	HEM	C1D-C2D-C3D	-5.73	103.01	107.00
2	B	801	HEM	CAA-CBA-CGA	-5.11	104.10	112.67
2	D	801	HEM	CMD-C2D-C3D	4.60	133.61	124.94
2	D	801	HEM	CBD-CAD-C3D	-4.48	104.22	112.48
2	A	801	HEM	CMD-C2D-C3D	4.00	132.49	124.94
2	A	801	HEM	C1D-C2D-C3D	-3.94	104.26	107.00
2	C	801	HEM	C4A-C3A-C2A	-3.65	104.46	107.00
2	B	801	HEM	CMB-C2B-C3B	3.47	131.18	124.68
2	A	801	HEM	CMD-C2D-C1D	-3.47	123.13	128.46
2	C	801	HEM	CMB-C2B-C3B	3.47	131.17	124.68
2	B	801	HEM	CMC-C2C-C3C	3.12	130.52	124.68
2	B	801	HEM	C4A-C3A-C2A	-3.00	104.91	107.00
2	C	801	HEM	CMA-C3A-C2A	2.50	129.66	124.94
2	D	801	HEM	CMD-C2D-C1D	-2.34	124.86	128.46
2	C	801	HEM	CMD-C2D-C3D	2.32	129.31	124.94
2	D	801	HEM	CMC-C2C-C3C	-2.30	120.38	124.68

Continued on next page...

Continued from previous page...

Mol	Chain	Res	Type	Atoms	Z	Observed(°)	Ideal(°)
2	C	801	HEM	C4C-C3C-C2C	-2.27	105.31	106.90
2	B	801	HEM	CMD-C2D-C1D	2.24	131.91	128.46
2	D	801	HEM	CMB-C2B-C3B	2.13	128.67	124.68
2	D	801	HEM	CAD-CBD-CGD	-2.07	109.19	112.67
2	A	801	HEM	CMA-C3A-C4A	-2.05	125.31	128.46

There are no chirality outliers.

All (3) torsion outliers are listed below:

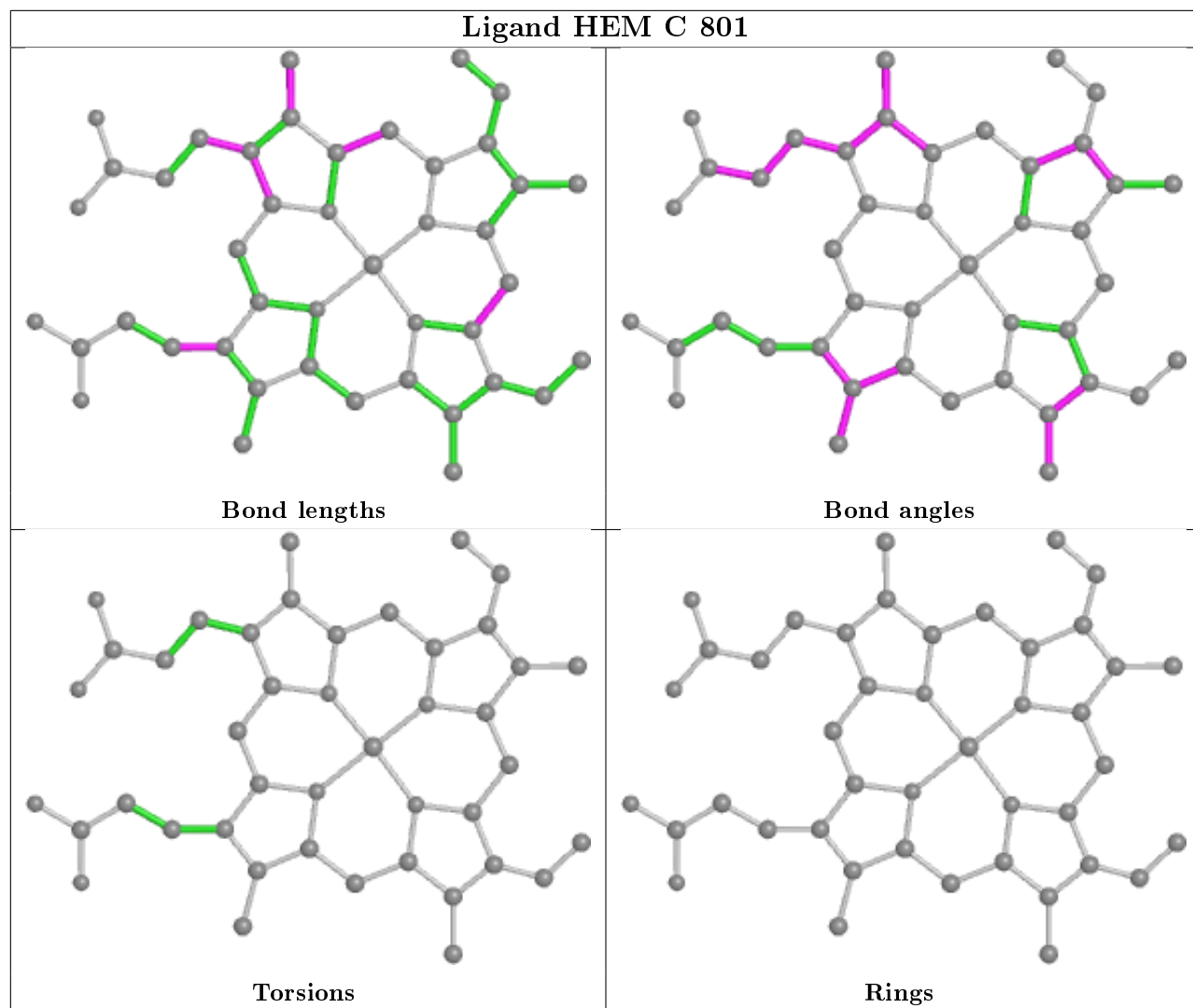
Mol	Chain	Res	Type	Atoms
2	D	801	HEM	C2D-C3D-CAD-CBD
2	D	801	HEM	C3D-CAD-CBD-CGD
2	D	801	HEM	C4D-C3D-CAD-CBD

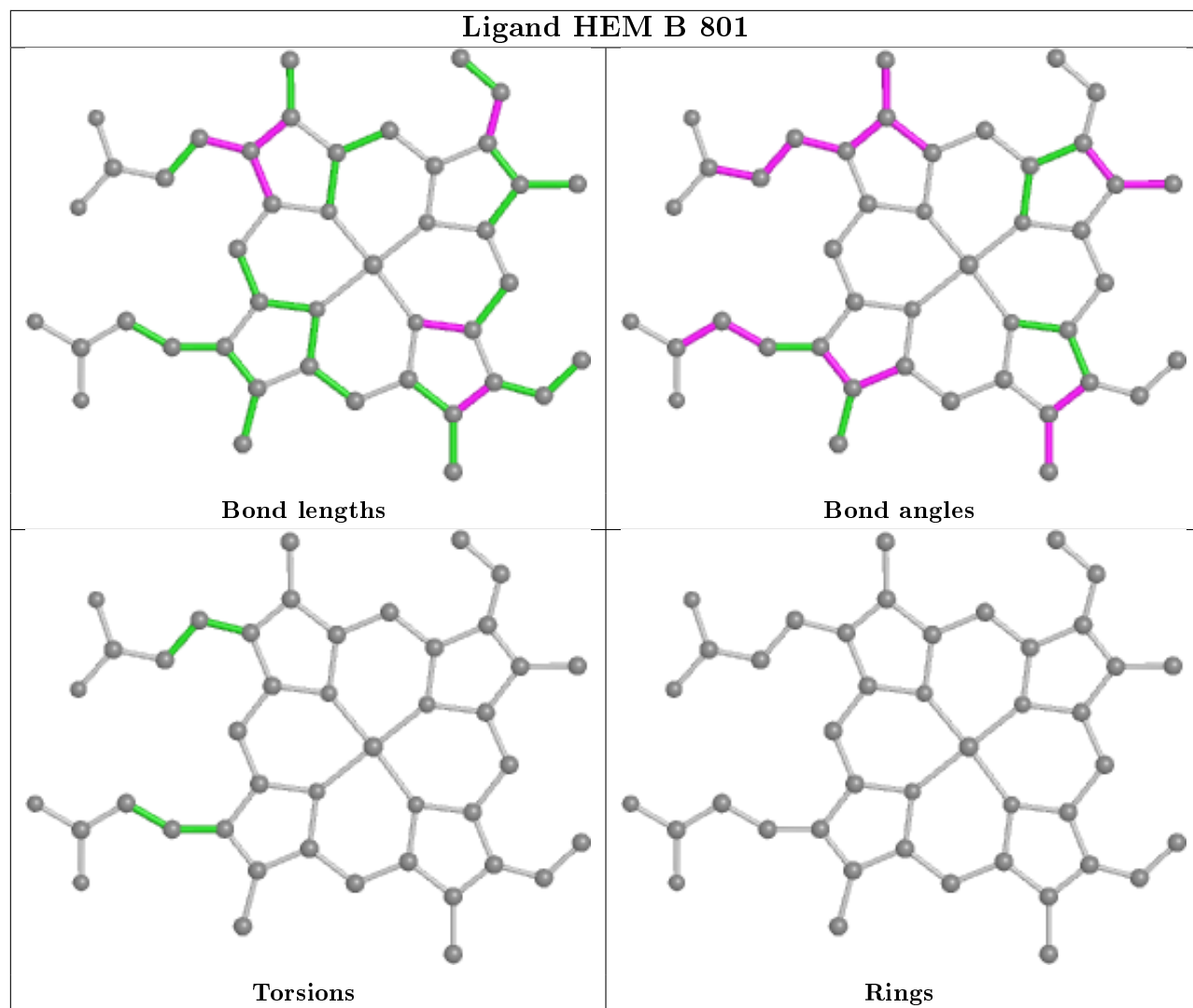
There are no ring outliers.

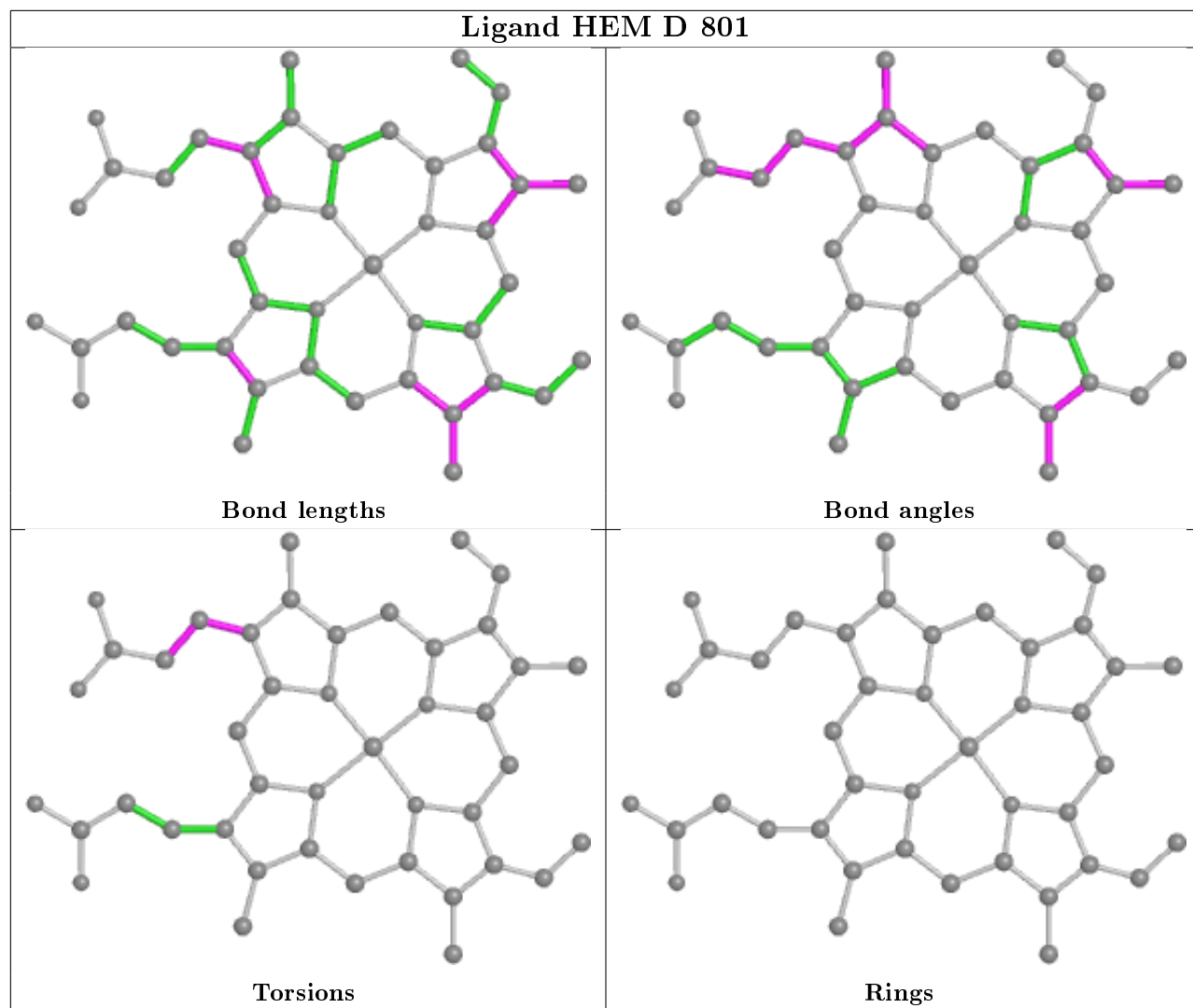
4 monomers are involved in 12 short contacts:

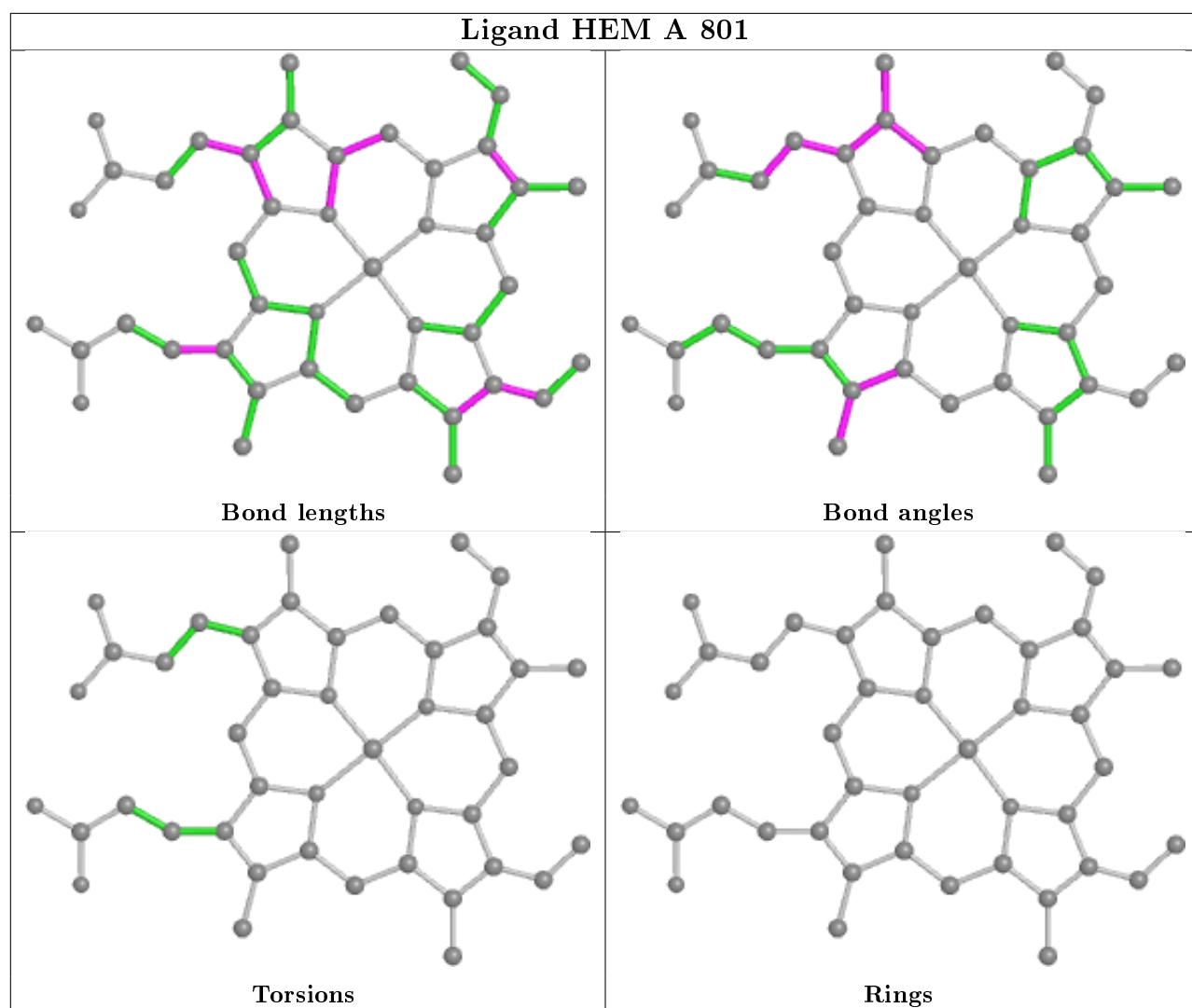
Mol	Chain	Res	Type	Clashes	Symm-Clashes
2	C	801	HEM	2	0
2	B	801	HEM	4	0
2	D	801	HEM	4	0
2	A	801	HEM	2	0

The following is a two-dimensional graphical depiction of Mogul quality analysis of bond lengths, bond angles, torsion angles, and ring geometry for all instances of the Ligand of Interest. In addition, ligands with molecular weight > 250 and outliers as shown on the validation Tables will also be included. For torsion angles, if less than 5% of the Mogul distribution of torsion angles is within 10 degrees of the torsion angle in question, then that torsion angle is considered an outlier. Any bond that is central to one or more torsion angles identified as an outlier by Mogul will be highlighted in the graph. For rings, the root-mean-square deviation (RMSD) between the ring in question and similar rings identified by Mogul is calculated over all ring torsion angles. If the average RMSD is greater than 60 degrees and the minimal RMSD between the ring in question and any Mogul-identified rings is also greater than 60 degrees, then that ring is considered an outlier. The outliers are highlighted in purple. The color gray indicates Mogul did not find sufficient equivalents in the CSD to analyse the geometry.









5.7 Other polymers [i](#)

There are no such residues in this entry.

5.8 Polymer linkage issues [i](#)

There are no chain breaks in this entry.

6 Fit of model and data ⓘ

6.1 Protein, DNA and RNA chains ⓘ

In the following table, the column labelled ‘#RSRZ> 2’ contains the number (and percentage) of RSRZ outliers, followed by percent RSRZ outliers for the chain as percentile scores relative to all X-ray entries and entries of similar resolution. The OWAB column contains the minimum, median, 95th percentile and maximum values of the occupancy-weighted average B-factor per residue. The column labelled ‘Q< 0.9’ lists the number of (and percentage) of residues with an average occupancy less than 0.9.

Mol	Chain	Analysed	<RSRZ>	#RSRZ>2	OWAB(Å ²)	Q<0.9
1	A	726/753 (96%)	-0.31	2 (0%) 94 94	7, 22, 43, 58	1 (0%)
1	B	721/753 (95%)	-0.31	14 (1%) 66 67	5, 21, 53, 100	1 (0%)
1	C	722/753 (95%)	-0.36	3 (0%) 92 93	5, 21, 45, 102	1 (0%)
1	D	726/753 (96%)	-0.20	11 (1%) 73 75	8, 24, 49, 78	1 (0%)
All	All	2895/3012 (96%)	-0.29	30 (1%) 82 83	5, 22, 47, 102	4 (0%)

All (30) RSRZ outliers are listed below:

Mol	Chain	Res	Type	RSRZ
1	C	710	ILE	5.4
1	B	35	SER	4.9
1	B	34	GLY	4.2
1	B	36	HIS	4.1
1	B	30	ALA	3.8
1	B	37	ARG	3.7
1	B	710	ILE	3.7
1	B	33	ASP	3.6
1	C	726	GLY	3.5
1	B	32	GLU	3.4
1	D	615	ASP	3.3
1	B	38	PRO	3.1
1	D	618	ALA	2.8
1	D	596	GLY	2.7
1	C	595	ASP	2.6
1	D	724	ALA	2.6
1	D	669	CYS	2.6
1	D	611	VAL	2.6
1	B	39	ALA	2.4
1	B	41	GLU	2.4
1	B	29	LEU	2.3

Continued on next page...

Continued from previous page...

Mol	Chain	Res	Type	RSRZ
1	B	31	PRO	2.3
1	A	611	VAL	2.3
1	D	612	ARG	2.3
1	D	713	GLN	2.3
1	D	726	GLY	2.3
1	A	157	ASN	2.2
1	B	40	ALA	2.1
1	D	622	ALA	2.1
1	D	614	ALA	2.0

6.2 Non-standard residues in protein, DNA, RNA chains [i](#)

There are no non-standard protein/DNA/RNA residues in this entry.

6.3 Carbohydrates [i](#)

There are no carbohydrates in this entry.

6.4 Ligands [i](#)

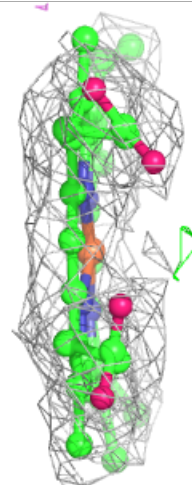
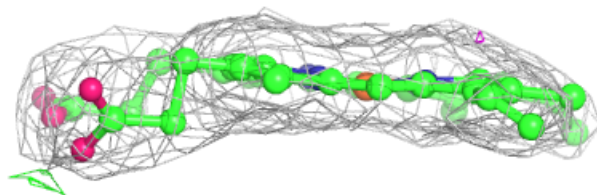
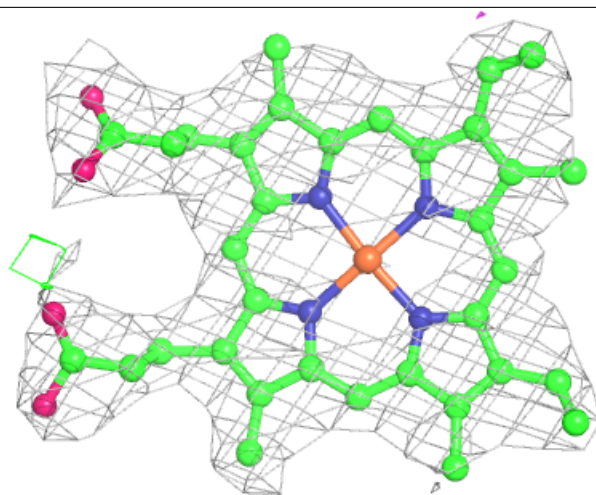
In the following table, the Atoms column lists the number of modelled atoms in the group and the number defined in the chemical component dictionary. The B-factors column lists the minimum, median, 95th percentile and maximum values of B factors of atoms in the group. The column labelled 'Q< 0.9' lists the number of atoms with occupancy less than 0.9.

Mol	Type	Chain	Res	Atoms	RSCC	RSR	B-factors(\AA^2)	Q<0.9
2	HEM	C	801	43/43	0.96	0.14	15,16,18,21	0
2	HEM	B	801	43/43	0.96	0.14	14,15,19,29	0
2	HEM	D	801	43/43	0.96	0.14	16,17,21,23	0
2	HEM	A	801	43/43	0.96	0.14	12,14,17,21	0

The following is a graphical depiction of the model fit to experimental electron density of all instances of the Ligand of Interest. In addition, ligands with molecular weight > 250 and outliers as shown on the geometry validation Tables will also be included. Each fit is shown from different orientation to approximate a three-dimensional view.

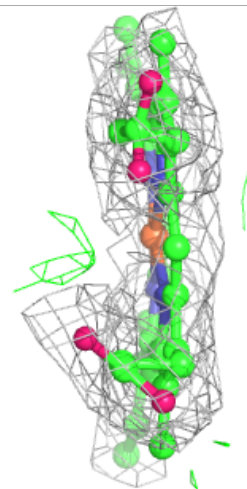
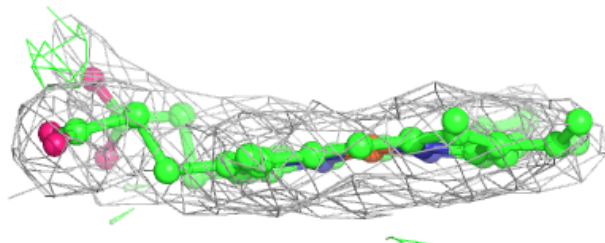
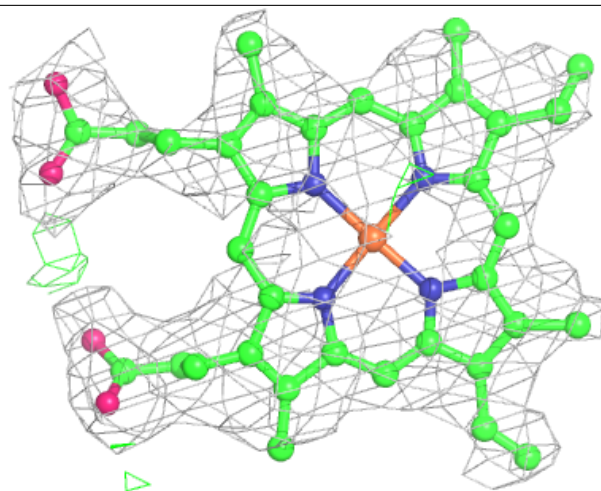
Electron density around HEM C 801:

$2mF_o-DF_c$ (at 0.7 rmsd) in gray
 mF_o-DF_c (at 3 rmsd) in purple (negative)
and green (positive)



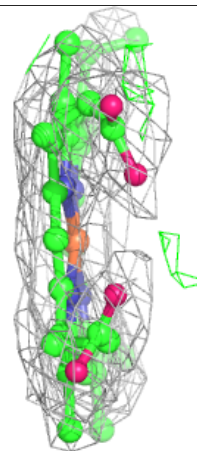
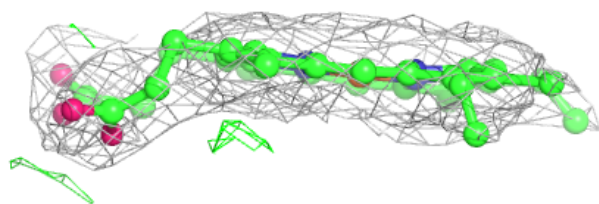
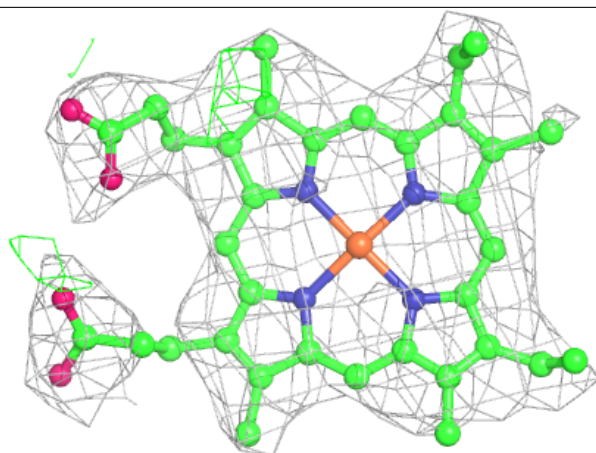
Electron density around HEM B 801:

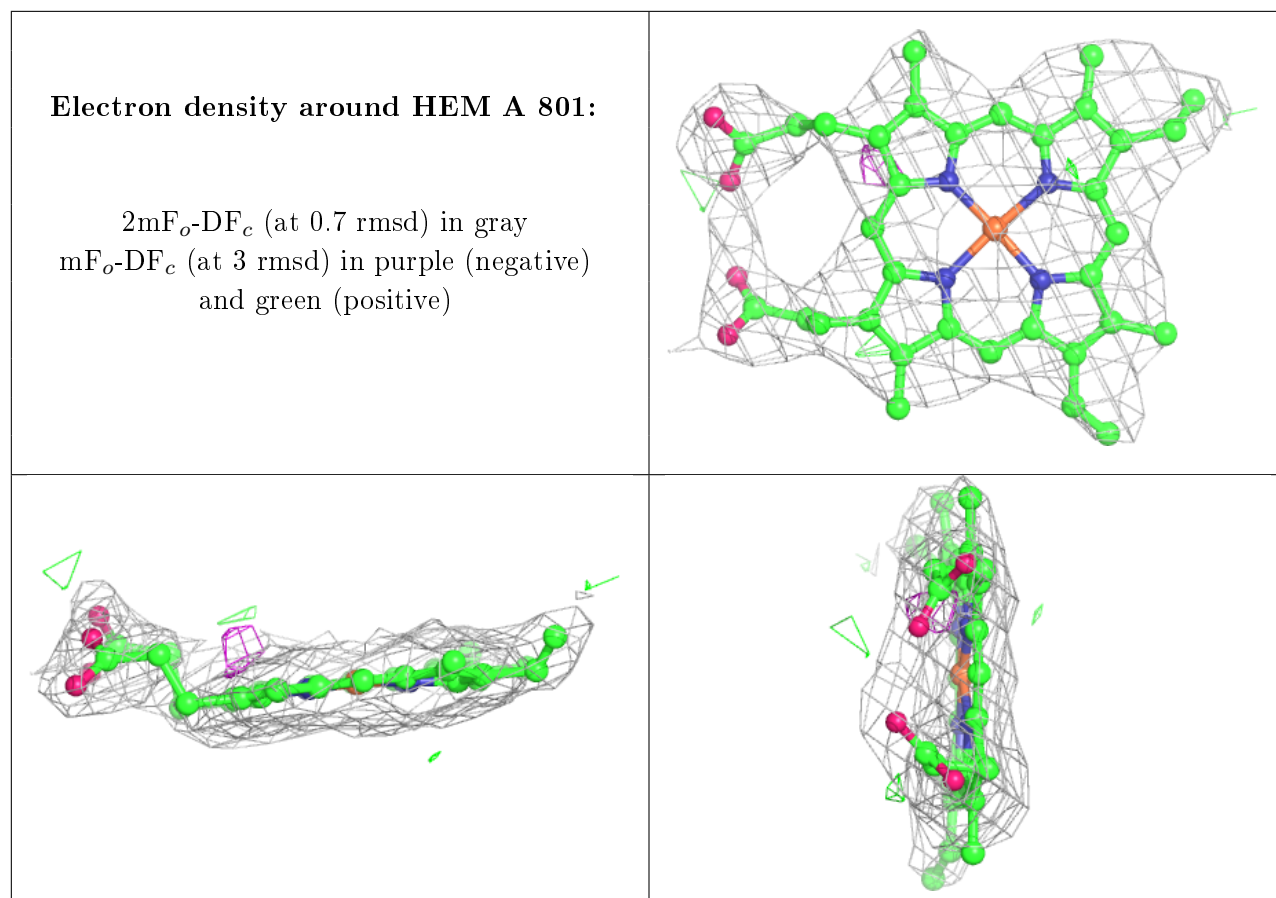
$2mF_o-DF_c$ (at 0.7 rmsd) in gray
 mF_o-DF_c (at 3 rmsd) in purple (negative)
and green (positive)



Electron density around HEM D 801:

$2mF_o-DF_c$ (at 0.7 rmsd) in gray
 mF_o-DF_c (at 3 rmsd) in purple (negative)
and green (positive)





6.5 Other polymers ⓘ

There are no such residues in this entry.