



# Full wwPDB X-ray Structure Validation Report ⓘ

May 18, 2020 – 09:59 pm BST

PDB ID : 4BZ6  
Title : Crystal structure of Schistosoma mansoni HDAC8 complexed with SAHA  
Authors : Marek, M.; Romier, C.  
Deposited on : 2013-07-24  
Resolution : 2.00 Å(reported)

This is a Full wwPDB X-ray Structure Validation Report for a publicly released PDB entry.

We welcome your comments at [validation@mail.wwpdb.org](mailto:validation@mail.wwpdb.org)

A user guide is available at

<https://www.wwpdb.org/validation/2017/XrayValidationReportHelp>

with specific help available everywhere you see the ⓘ symbol.

---

The following versions of software and data (see [references ⓘ](#)) were used in the production of this report:

MolProbity : 4.02b-467  
Mogul : 1.8.5 (274361), CSD as541be (2020)  
Xtriage (Phenix) : 1.13  
EDS : 2.11  
buster-report : 1.1.7 (2018)  
Percentile statistics : 20191225.v01 (using entries in the PDB archive December 25th 2019)  
Refmac : 5.8.0158  
CCP4 : 7.0.044 (Gargrove)  
Ideal geometry (proteins) : Engh & Huber (2001)  
Ideal geometry (DNA, RNA) : Parkinson et al. (1996)  
Validation Pipeline (wwPDB-VP) : 2.11

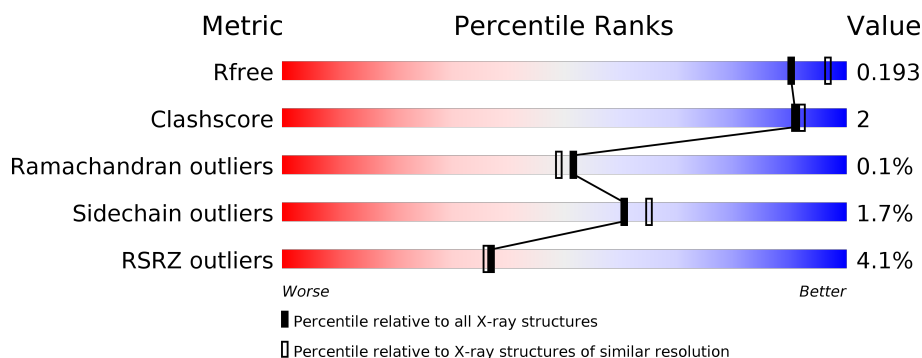
# 1 Overall quality at a glance

The following experimental techniques were used to determine the structure:

*X-RAY DIFFRACTION*

The reported resolution of this entry is 2.00 Å.

Percentile scores (ranging between 0-100) for global validation metrics of the entry are shown in the following graphic. The table shows the number of entries on which the scores are based.



Metric	Whole archive (#Entries)	Similar resolution (#Entries, resolution range(Å))
$R_{free}$	130704	8085 (2.00-2.00)
Clashscore	141614	9178 (2.00-2.00)
Ramachandran outliers	138981	9054 (2.00-2.00)
Sidechain outliers	138945	9053 (2.00-2.00)
RSRZ outliers	127900	7900 (2.00-2.00)

The table below summarises the geometric issues observed across the polymeric chains and their fit to the electron density. The red, orange, yellow and green segments on the lower bar indicate the fraction of residues that contain outliers for  $\geq 3$ , 2, 1 and 0 types of geometric quality criteria respectively. A grey segment represents the fraction of residues that are not modelled. The numeric value for each fraction is indicated below the corresponding segment, with a dot representing fractions  $\leq 5\%$ . The upper red bar (where present) indicates the fraction of residues that have poor fit to the electron density. The numeric value is given above the bar.

Mol	Chain	Length	Quality of chain
1	A	446	<div> <div>4%</div> <div> <div></div> <div>83%</div> <div>6%</div> <div>11%</div> </div> </div>
1	B	446	<div> <div>3%</div> <div> <div></div> <div>88%</div> <div>•</div> <div>8%</div> </div> </div>
1	C	446	<div> <div>3%</div> <div> <div></div> <div>88%</div> <div>•</div> <div>7%</div> </div> </div>
1	D	446	<div> <div>5%</div> <div> <div></div> <div>85%</div> <div>5%</div> <div>10%</div> </div> </div>

## 2 Entry composition

There are 7 unique types of molecules in this entry. The entry contains 14023 atoms, of which 0 are hydrogens and 0 are deuteriums.

In the tables below, the ZeroOcc column contains the number of atoms modelled with zero occupancy, the AltConf column contains the number of residues with at least one atom in alternate conformation and the Trace column contains the number of residues modelled with at most 2 atoms.

- Molecule 1 is a protein called HISTONE DEACETYLASE 8.

Mol	Chain	Residues	Atoms					ZeroOcc	AltConf	Trace
1	A	397	Total	C	N	O	S	0	1	0
			3183	2052	530	585	16			
1	B	410	Total	C	N	O	S	0	1	0
			3271	2108	548	599	16			
1	C	414	Total	C	N	O	S	0	1	0
			3304	2128	552	606	18			
1	D	401	Total	C	N	O	S	0	1	0
			3212	2072	534	590	16			

There are 24 discrepancies between the modelled and reference sequences:

Chain	Residue	Modelled	Actual	Comment	Reference
A	441	GLY	-	expression tag	UNP A5H660
A	442	SER	-	expression tag	UNP A5H660
A	443	LEU	-	expression tag	UNP A5H660
A	444	VAL	-	expression tag	UNP A5H660
A	445	PRO	-	expression tag	UNP A5H660
A	446	ARG	-	expression tag	UNP A5H660
B	441	GLY	-	expression tag	UNP A5H660
B	442	SER	-	expression tag	UNP A5H660
B	443	LEU	-	expression tag	UNP A5H660
B	444	VAL	-	expression tag	UNP A5H660
B	445	PRO	-	expression tag	UNP A5H660
B	446	ARG	-	expression tag	UNP A5H660
C	441	GLY	-	expression tag	UNP A5H660
C	442	SER	-	expression tag	UNP A5H660
C	443	LEU	-	expression tag	UNP A5H660
C	444	VAL	-	expression tag	UNP A5H660
C	445	PRO	-	expression tag	UNP A5H660
C	446	ARG	-	expression tag	UNP A5H660
D	441	GLY	-	expression tag	UNP A5H660
D	442	SER	-	expression tag	UNP A5H660
D	443	LEU	-	expression tag	UNP A5H660

*Continued on next page...*

*Continued from previous page...*

Chain	Residue	Modelled	Actual	Comment	Reference
D	444	VAL	-	expression tag	UNP A5H660
D	445	PRO	-	expression tag	UNP A5H660
D	446	ARG	-	expression tag	UNP A5H660

- Molecule 2 is ZINC ION (three-letter code: ZN) (formula: Zn).

Mol	Chain	Residues	Atoms		ZeroOcc	AltConf
2	B	1	Total	Zn	0	0
			1	1		
2	A	1	Total	Zn	0	0
			1	1		
2	D	1	Total	Zn	0	0
			1	1		
2	C	1	Total	Zn	0	0
			1	1		

- Molecule 3 is POTASSIUM ION (three-letter code: K) (formula: K).

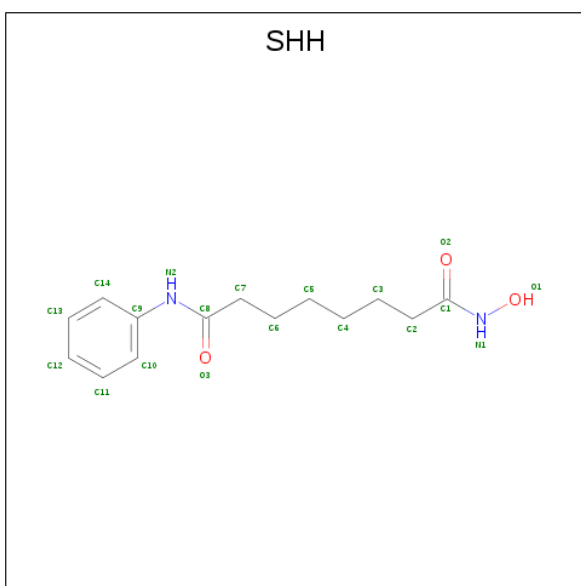
Mol	Chain	Residues	Atoms		ZeroOcc	AltConf
3	B	2	Total	K	0	0
			2	2		
3	A	2	Total	K	0	0
			2	2		
3	D	2	Total	K	0	0
			2	2		
3	C	2	Total	K	0	0
			2	2		

- Molecule 4 is GLYCEROL (three-letter code: GOL) (formula: C<sub>3</sub>H<sub>8</sub>O<sub>3</sub>).



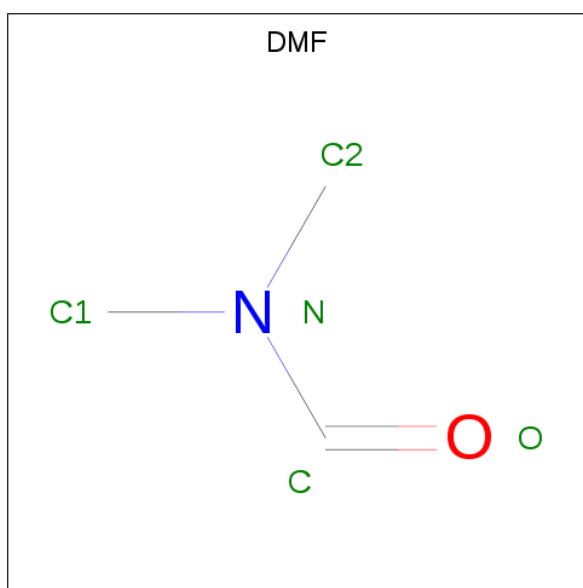
Mol	Chain	Residues	Atoms			ZeroOcc	AltConf
4	A	1	Total	C	O	0	0
			6	3	3		
4	B	1	Total	C	O	0	0
			6	3	3		
4	C	1	Total	C	O	0	0
			6	3	3		
4	D	1	Total	C	O	0	0
			6	3	3		

- Molecule 5 is OCTANEDIOIC ACID HYDROXYAMIDE PHENYLAMIDE (three-letter code: SHH) (formula:  $C_{14}H_{20}N_2O_3$ ).



Mol	Chain	Residues	Atoms				ZeroOcc	AltConf
5	A	1	Total	C	N	O	0	0
			19	14	2	3		
5	B	1	Total	C	N	O	0	0
			19	14	2	3		
5	C	1	Total	C	N	O	0	0
			19	14	2	3		
5	D	1	Total	C	N	O	0	0
			19	14	2	3		

- Molecule 6 is DIMETHYLFORMAMIDE (three-letter code: DMF) (formula:  $C_3H_7NO$ ).



Mol	Chain	Residues	Atoms				ZeroOcc	AltConf
6	B	1	Total	C	N	O	0	0
			5	3	1	1		
6	B	1	Total	C	N	O	0	0
			5	3	1	1		
6	C	1	Total	C	N	O	0	0
			5	3	1	1		

- Molecule 7 is water.

Mol	Chain	Residues	Atoms		ZeroOcc	AltConf
7	A	233	Total	O	0	0
			233	233		
7	B	254	Total	O	0	0
			254	254		
7	C	249	Total	O	0	0
			249	249		

*Continued on next page...*

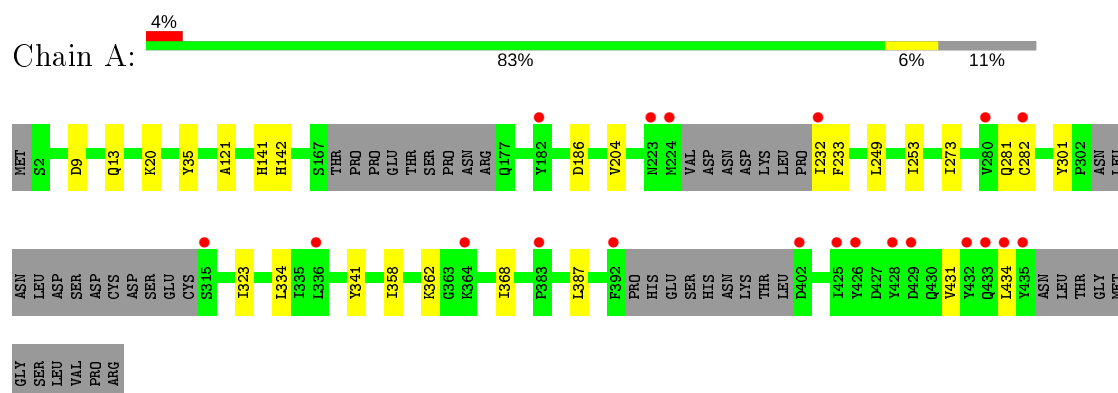
*Continued from previous page...*

Mol	Chain	Residues	Atoms		ZeroOcc	AltConf
7	D	190	Total 190	O 190	0	0

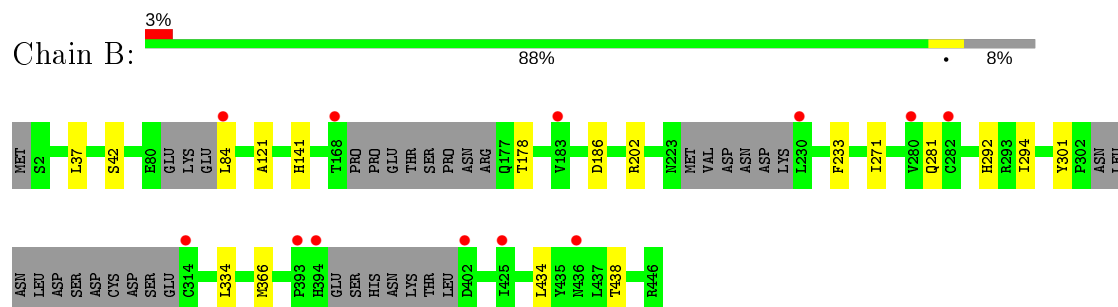
### 3 Residue-property plots [i](#)

These plots are drawn for all protein, RNA and DNA chains in the entry. The first graphic for a chain summarises the proportions of the various outlier classes displayed in the second graphic. The second graphic shows the sequence view annotated by issues in geometry and electron density. Residues are color-coded according to the number of geometric quality criteria for which they contain at least one outlier: green = 0, yellow = 1, orange = 2 and red = 3 or more. A red dot above a residue indicates a poor fit to the electron density ( $RSRZ > 2$ ). Stretches of 2 or more consecutive residues without any outlier are shown as a green connector. Residues present in the sample, but not in the model, are shown in grey.

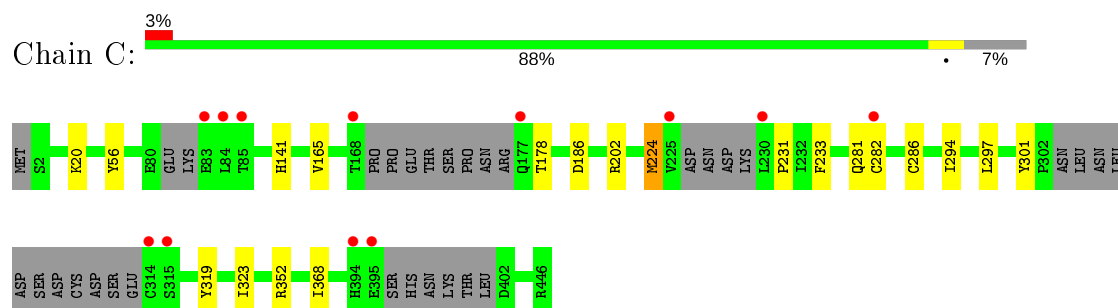
#### • Molecule 1: HISTONE DEACETYLASE 8



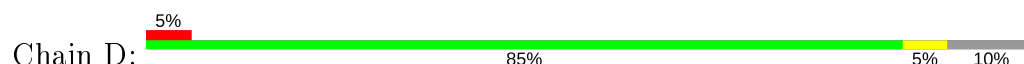
#### • Molecule 1: HISTONE DEACETYLASE 8



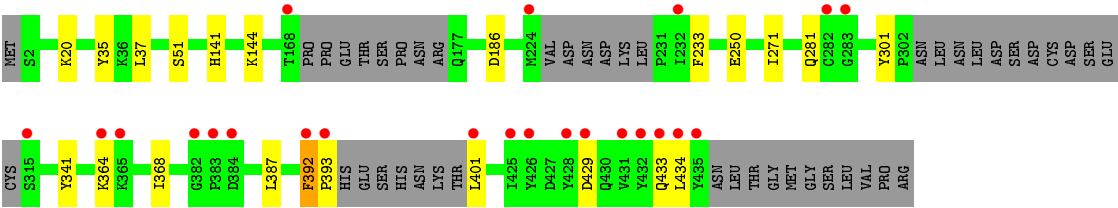
#### • Molecule 1: HISTONE DEACETYLASE 8



#### • Molecule 1: HISTONE DEACETYLASE 8







## 4 Data and refinement statistics

Property	Value	Source
Space group	P 1	Depositor
Cell constants a, b, c, $\alpha$ , $\beta$ , $\gamma$	70.64Å 70.64Å 97.99Å 77.88° 75.48° 85.69°	Depositor
Resolution (Å)	34.74 – 2.00 34.75 – 2.00	Depositor EDS
% Data completeness (in resolution range)	97.3 (34.74-2.00) 97.4 (34.75-2.00)	Depositor EDS
$R_{merge}$	0.09	Depositor
$R_{sym}$	(Not available)	Depositor
$\langle I/\sigma(I) \rangle$ <sup>1</sup>	3.00 (at 2.00Å)	Xtriage
Refinement program	BUSTER 2.10.0	Depositor
R, $R_{free}$	0.163 , 0.191 0.164 , 0.193	Depositor DCC
$R_{free}$ test set	5968 reflections (5.06%)	wwPDB-VP
Wilson B-factor (Å <sup>2</sup> )	22.4	Xtriage
Anisotropy	0.099	Xtriage
Bulk solvent $k_{sol}$ (e/Å <sup>3</sup> ), $B_{sol}$ (Å <sup>2</sup> )	0.38 , 53.5	EDS
L-test for twinning <sup>2</sup>	$\langle  L  \rangle = 0.49$ , $\langle L^2 \rangle = 0.32$	Xtriage
Estimated twinning fraction	0.088 for -k,-h,-l	Xtriage
$F_o, F_c$ correlation	0.96	EDS
Total number of atoms	14023	wwPDB-VP
Average B, all atoms (Å <sup>2</sup> )	28.0	wwPDB-VP

Xtriage's analysis on translational NCS is as follows: *The largest off-origin peak in the Patterson function is 4.54% of the height of the origin peak. No significant pseudotranslation is detected.*

<sup>1</sup>Intensities estimated from amplitudes.

<sup>2</sup>Theoretical values of  $\langle |L| \rangle$ ,  $\langle L^2 \rangle$  for acentric reflections are 0.5, 0.333 respectively for untwinned datasets, and 0.375, 0.2 for perfectly twinned datasets.

## 5 Model quality [i](#)

### 5.1 Standard geometry [i](#)

Bond lengths and bond angles in the following residue types are not validated in this section: SHH, GOL, ZN, K, DMF

The Z score for a bond length (or angle) is the number of standard deviations the observed value is removed from the expected value. A bond length (or angle) with  $|Z| > 5$  is considered an outlier worth inspection. RMSZ is the root-mean-square of all Z scores of the bond lengths (or angles).

Mol	Chain	Bond lengths		Bond angles	
		RMSZ	$\# Z  > 5$	RMSZ	$\# Z  > 5$
1	A	0.51	0/3274	0.59	0/4450
1	B	0.52	0/3365	0.59	0/4577
1	C	0.52	0/3398	0.59	0/4621
1	D	0.50	0/3305	0.60	0/4494
All	All	0.51	0/13342	0.59	0/18142

There are no bond length outliers.

There are no bond angle outliers.

There are no chirality outliers.

There are no planarity outliers.

### 5.2 Too-close contacts [i](#)

In the following table, the Non-H and H(model) columns list the number of non-hydrogen atoms and hydrogen atoms in the chain respectively. The H(added) column lists the number of hydrogen atoms added and optimized by MolProbity. The Clashes column lists the number of clashes within the asymmetric unit, whereas Symm-Clashes lists symmetry related clashes.

Mol	Chain	Non-H	H(model)	H(added)	Clashes	Symm-Clashes
1	A	3183	0	3075	19	0
1	B	3271	0	3169	7	0
1	C	3304	0	3198	8	0
1	D	3212	0	3108	10	0
2	A	1	0	0	0	0
2	B	1	0	0	0	0
2	C	1	0	0	0	0
2	D	1	0	0	0	0
3	A	2	0	0	0	0

*Continued on next page...*

*Continued from previous page...*

Mol	Chain	Non-H	H(model)	H(added)	Clashes	Symm-Clashes
3	B	2	0	0	0	0
3	C	2	0	0	0	0
3	D	2	0	0	0	0
4	A	6	0	8	0	0
4	B	6	0	8	0	0
4	C	6	0	8	0	0
4	D	6	0	8	0	0
5	A	19	0	19	3	0
5	B	19	0	19	0	0
5	C	19	0	19	0	0
5	D	19	0	19	0	0
6	B	10	0	14	0	0
6	C	5	0	7	0	0
7	A	233	0	0	0	0
7	B	254	0	0	0	0
7	C	249	0	0	0	0
7	D	190	0	0	0	0
All	All	14023	0	12679	43	0

The all-atom clashscore is defined as the number of clashes found per 1000 atoms (including hydrogen atoms). The all-atom clashscore for this structure is 2.

All (43) close contacts within the same asymmetric unit are listed below, sorted by their clash magnitude.

Atom-1	Atom-2	Interatomic distance (Å)	Clash overlap (Å)
1:A:20:LYS:HE3	1:A:341:TYR:HE1	1.43	0.83
1:D:392:PHE:HB2	1:D:393:PRO:HD3	1.73	0.69
1:A:20:LYS:HE3	1:A:341:TYR:CE1	2.25	0.68
1:D:392:PHE:CB	1:D:393:PRO:HD3	2.30	0.61
1:B:271:ILE:HD12	1:B:434:LEU:HD11	1.85	0.59
1:A:121:ALA:HB1	1:A:334:LEU:HD11	1.85	0.58
1:A:35:TYR:CE1	1:A:368:ILE:HG23	2.39	0.57
1:D:20:LYS:NZ	1:D:341:TYR:CE1	2.73	0.57
1:A:368:ILE:HG21	1:A:387:LEU:CD2	2.35	0.56
1:B:292:HIS:HB3	1:B:294:ILE:HD12	1.89	0.54
1:D:37:LEU:HD21	1:D:368:ILE:HD11	1.89	0.54
1:A:368:ILE:CG2	1:A:387:LEU:HD22	2.38	0.53
1:C:282[B]:CYS:SG	1:C:323:ILE:HD11	2.49	0.52
1:A:121:ALA:CB	1:A:334:LEU:HD11	2.41	0.50
1:C:352:ARG:HG2	1:C:368:ILE:HD11	1.94	0.49
1:A:20:LYS:NZ	5:A:700:SHH:H71	2.28	0.49

*Continued on next page...*

*Continued from previous page...*

Atom-1	Atom-2	Interatomic distance (Å)	Clash overlap (Å)
1:A:282[B]:CYS:SG	1:A:323:ILE:HD11	2.53	0.48
1:D:186:ASP:HB2	1:D:281:GLN:OE1	2.14	0.47
1:A:20:LYS:HZ1	5:A:700:SHH:H71	1.79	0.47
1:C:286:CYS:HB2	1:C:319:TYR:OH	2.15	0.46
1:A:368:ILE:HG21	1:A:387:LEU:HD22	1.98	0.45
1:B:178:THR:HB	1:B:202:ARG:HH21	1.82	0.45
1:A:186:ASP:HB2	1:A:281:GLN:OE1	2.16	0.45
1:A:204:VAL:HG21	1:A:273:ILE:HG12	1.98	0.45
1:A:368:ILE:CG2	1:A:387:LEU:CD2	2.94	0.45
1:B:271:ILE:CD1	1:B:434:LEU:HD11	2.47	0.45
1:A:249:LEU:HD13	1:A:253:ILE:HD13	1.99	0.44
1:B:121:ALA:HB1	1:B:334:LEU:HD11	1.98	0.44
1:C:294:ILE:HD11	1:D:51:SER:CB	2.47	0.44
1:C:186:ASP:HB2	1:C:281:GLN:OE1	2.18	0.44
1:D:368:ILE:HG21	1:D:387:LEU:CD2	2.49	0.43
1:D:429:ASP:O	1:D:433:GLN:HG2	2.18	0.43
1:B:37:LEU:CD2	1:B:366:MET:HE2	2.49	0.43
1:D:35:TYR:CE1	1:D:368:ILE:HG23	2.54	0.43
1:A:431:VAL:HA	1:A:434:LEU:HD12	2.00	0.42
1:C:178:THR:HB	1:C:202:ARG:HH21	1.84	0.42
1:C:286:CYS:HB3	1:C:297:LEU:HD22	2.01	0.42
1:D:271:ILE:HD12	1:D:434:LEU:HD11	2.01	0.42
1:A:9:ASP:O	1:A:13:GLN:HG2	2.19	0.42
1:A:142:HIS:CD2	5:A:700:SHH:HN1	2.39	0.41
1:C:224:MET:HB3	1:C:231:PRO:HB3	2.03	0.41
1:B:186:ASP:HB2	1:B:281:GLN:OE1	2.21	0.40
1:A:358:ILE:HG23	1:A:362:LYS:HD3	2.02	0.40

There are no symmetry-related clashes.

## 5.3 Torsion angles [i](#)

### 5.3.1 Protein backbone [i](#)

In the following table, the Percentiles column shows the percent Ramachandran outliers of the chain as a percentile score with respect to all X-ray entries followed by that with respect to entries of similar resolution.

The Analysed column shows the number of residues for which the backbone conformation was analysed, and the total number of residues.

Mol	Chain	Analysed	Favoured	Allowed	Outliers	Percentiles	
1	A	388/446 (87%)	380 (98%)	8 (2%)	0	100	100
1	B	399/446 (90%)	392 (98%)	7 (2%)	0	100	100
1	C	403/446 (90%)	397 (98%)	6 (2%)	0	100	100
1	D	392/446 (88%)	384 (98%)	7 (2%)	1 (0%)	41	37
All	All	1582/1784 (89%)	1553 (98%)	28 (2%)	1 (0%)	51	49

All (1) Ramachandran outliers are listed below:

Mol	Chain	Res	Type
1	D	392	PHE

### 5.3.2 Protein sidechains ⓘ

In the following table, the Percentiles column shows the percent sidechain outliers of the chain as a percentile score with respect to all X-ray entries followed by that with respect to entries of similar resolution.

The Analysed column shows the number of residues for which the sidechain conformation was analysed, and the total number of residues.

Mol	Chain	Analysed	Rotameric	Outliers	Percentiles	
1	A	345/391 (88%)	341 (99%)	4 (1%)	71	76
1	B	356/391 (91%)	349 (98%)	7 (2%)	55	58
1	C	360/391 (92%)	353 (98%)	7 (2%)	57	61
1	D	349/391 (89%)	342 (98%)	7 (2%)	55	58
All	All	1410/1564 (90%)	1385 (98%)	25 (2%)	60	63

All (25) residues with a non-rotameric sidechain are listed below:

Mol	Chain	Res	Type
1	A	141	HIS
1	A	232	ILE
1	A	233	PHE
1	A	301	TYR
1	B	42[A]	SER
1	B	42[B]	SER
1	B	84	LEU
1	B	141	HIS
1	B	233	PHE
1	B	301	TYR

*Continued on next page...*

*Continued from previous page...*

Mol	Chain	Res	Type
1	B	438	THR
1	C	20	LYS
1	C	56	TYR
1	C	141	HIS
1	C	165	VAL
1	C	224	MET
1	C	233	PHE
1	C	301	TYR
1	D	141	HIS
1	D	144	LYS
1	D	233	PHE
1	D	250	GLU
1	D	301	TYR
1	D	364	LYS
1	D	401	LEU

Some sidechains can be flipped to improve hydrogen bonding and reduce clashes. There are no such sidechains identified.

### 5.3.3 RNA [i](#)

There are no RNA molecules in this entry.

## 5.4 Non-standard residues in protein, DNA, RNA chains [i](#)

There are no non-standard protein/DNA/RNA residues in this entry.

## 5.5 Carbohydrates [i](#)

There are no carbohydrates in this entry.

## 5.6 Ligand geometry [i](#)

Of 23 ligands modelled in this entry, 12 are monoatomic - leaving 11 for Mogul analysis.

In the following table, the Counts columns list the number of bonds (or angles) for which Mogul statistics could be retrieved, the number of bonds (or angles) that are observed in the model and the number of bonds (or angles) that are defined in the Chemical Component Dictionary. The Link column lists molecule types, if any, to which the group is linked. The Z score for a bond length (or angle) is the number of standard deviations the observed value is removed from the

expected value. A bond length (or angle) with  $|Z| > 2$  is considered an outlier worth inspection. RMSZ is the root-mean-square of all Z scores of the bond lengths (or angles).

Mol	Type	Chain	Res	Link	Bond lengths			Bond angles		
					Counts	RMSZ	$\# Z  > 2$	Counts	RMSZ	$\# Z  > 2$
6	DMF	B	652	-	4,4,4	0.73	0	4,4,4	0.34	0
5	SHH	C	700	2	19,19,19	2.60	3 (15%)	21,22,22	1.29	4 (19%)
5	SHH	A	700	2	19,19,19	2.53	3 (15%)	21,22,22	1.09	2 (9%)
4	GOL	B	651	-	5,5,5	0.67	0	5,5,5	1.24	0
4	GOL	D	651	-	5,5,5	0.76	0	5,5,5	0.97	0
6	DMF	C	652	-	4,4,4	0.72	0	4,4,4	0.36	0
5	SHH	D	700	2	19,19,19	2.64	3 (15%)	21,22,22	1.65	4 (19%)
4	GOL	A	651	-	5,5,5	0.75	0	5,5,5	0.99	0
5	SHH	B	700	2	19,19,19	2.62	3 (15%)	21,22,22	1.16	2 (9%)
4	GOL	C	651	-	5,5,5	0.65	0	5,5,5	1.21	0
6	DMF	B	653	-	4,4,4	0.75	0	4,4,4	0.22	0

In the following table, the Chirals column lists the number of chiral outliers, the number of chiral centers analysed, the number of these observed in the model and the number defined in the Chemical Component Dictionary. Similar counts are reported in the Torsion and Rings columns. '-' means no outliers of that kind were identified.

Mol	Type	Chain	Res	Link	Chirals	Torsions	Rings
6	DMF	B	652	-	-	0/2/2/2	-
5	SHH	C	700	2	-	5/15/15/15	0/1/1/1
5	SHH	A	700	2	-	5/15/15/15	0/1/1/1
4	GOL	B	651	-	-	2/4/4/4	-
4	GOL	D	651	-	-	1/4/4/4	-
6	DMF	C	652	-	-	0/2/2/2	-
5	SHH	D	700	2	-	3/15/15/15	0/1/1/1
4	GOL	A	651	-	-	1/4/4/4	-
5	SHH	B	700	2	-	4/15/15/15	0/1/1/1
4	GOL	C	651	-	-	2/4/4/4	-
6	DMF	B	653	-	-	0/2/2/2	-

All (12) bond length outliers are listed below:

Mol	Chain	Res	Type	Atoms	Z	Observed(Å)	Ideal(Å)
5	B	700	SHH	C1-N1	9.66	1.42	1.32
5	D	700	SHH	C1-N1	9.63	1.42	1.32
5	C	700	SHH	C1-N1	9.37	1.42	1.32
5	A	700	SHH	C1-N1	9.16	1.42	1.32

*Continued on next page...*



*Continued from previous page...*

Mol	Chain	Res	Type	Atoms	Z	Observed(Å)	Ideal(Å)
5	D	700	SHH	C8-N2	4.11	1.44	1.35
5	C	700	SHH	O1-N1	-4.06	1.29	1.40
5	D	700	SHH	O1-N1	-4.01	1.29	1.40
5	C	700	SHH	C8-N2	3.95	1.44	1.35
5	B	700	SHH	O1-N1	-3.94	1.30	1.40
5	A	700	SHH	C8-N2	3.87	1.44	1.35
5	A	700	SHH	O1-N1	-3.87	1.30	1.40
5	B	700	SHH	C8-N2	3.81	1.44	1.35

All (12) bond angle outliers are listed below:

Mol	Chain	Res	Type	Atoms	Z	Observed(°)	Ideal(°)
5	D	700	SHH	C7-C8-N2	4.76	122.99	114.59
5	B	700	SHH	O2-C1-N1	-3.65	118.79	123.27
5	D	700	SHH	O3-C8-C7	-3.61	115.41	122.02
5	C	700	SHH	O2-C1-N1	-3.41	119.08	123.27
5	A	700	SHH	O2-C1-N1	-3.10	119.46	123.27
5	C	700	SHH	C7-C8-N2	2.79	119.51	114.59
5	D	700	SHH	O2-C1-N1	-2.66	120.01	123.27
5	C	700	SHH	C9-N2-C8	-2.46	123.19	127.50
5	A	700	SHH	O1-N1-C1	2.43	123.38	119.79
5	B	700	SHH	C7-C8-N2	2.35	118.73	114.59
5	D	700	SHH	C9-N2-C8	-2.32	123.43	127.50
5	C	700	SHH	O3-C8-C7	-2.13	118.12	122.02

There are no chirality outliers.

All (23) torsion outliers are listed below:

Mol	Chain	Res	Type	Atoms
4	C	651	GOL	O1-C1-C2-C3
4	C	651	GOL	C1-C2-C3-O3
5	D	700	SHH	C6-C7-C8-O3
5	D	700	SHH	C6-C7-C8-N2
4	B	651	GOL	O1-C1-C2-C3
4	D	651	GOL	O1-C1-C2-C3
4	A	651	GOL	C1-C2-C3-O3
5	A	700	SHH	C4-C5-C6-C7
5	B	700	SHH	C4-C5-C6-C7
5	C	700	SHH	C4-C5-C6-C7
5	A	700	SHH	C3-C4-C5-C6
5	C	700	SHH	C14-C9-N2-C8
5	C	700	SHH	C3-C4-C5-C6

*Continued on next page...*

*Continued from previous page...*

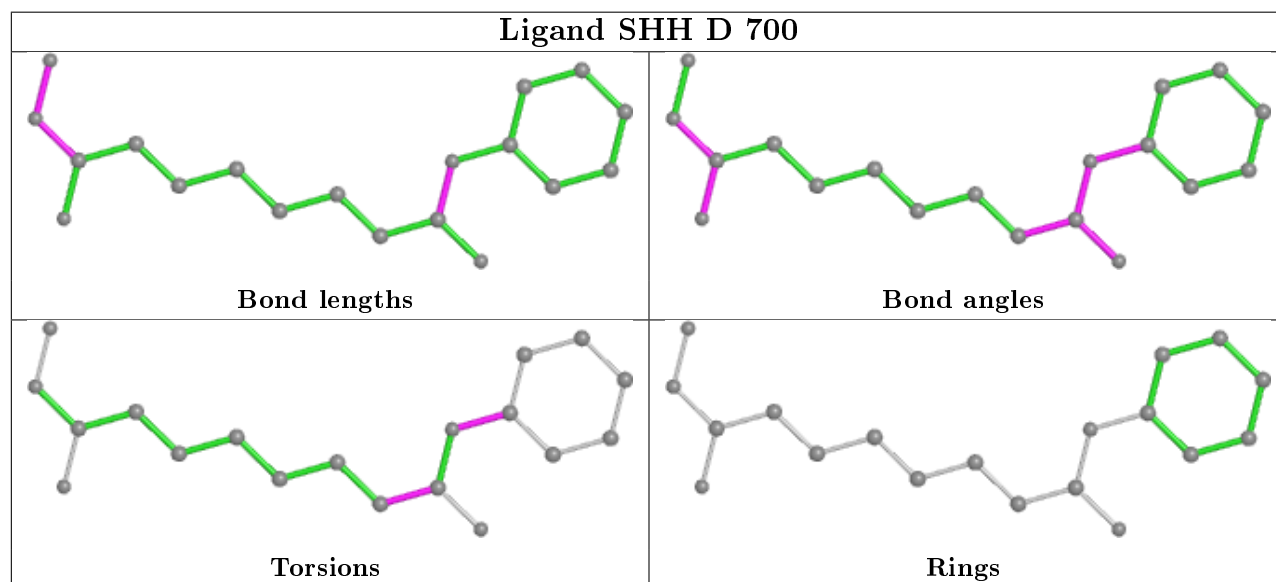
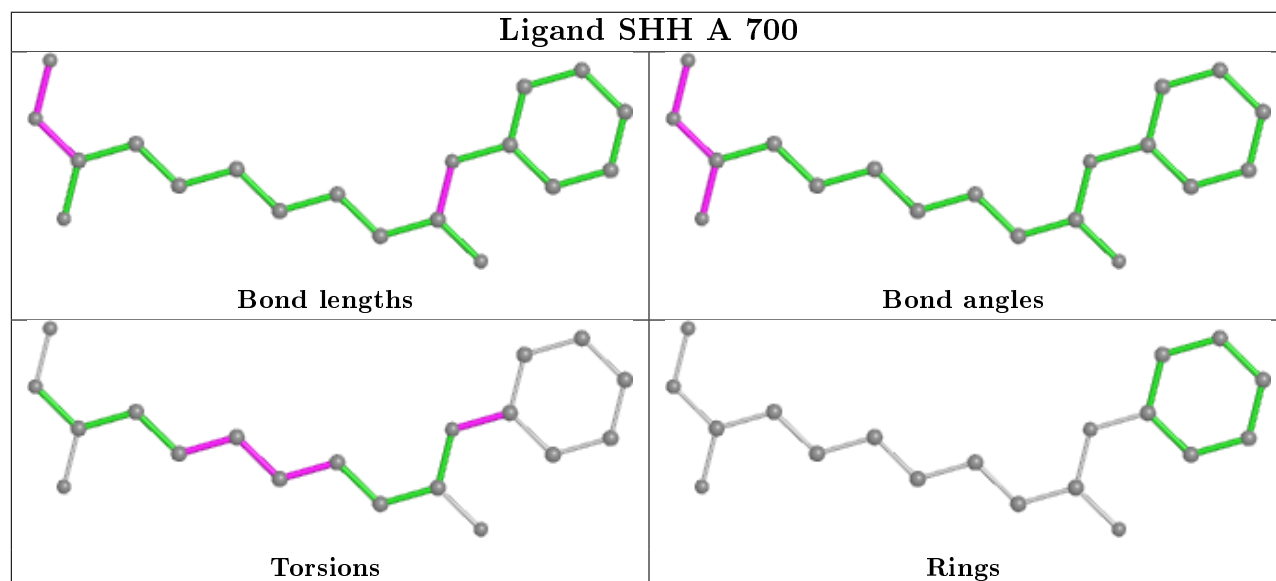
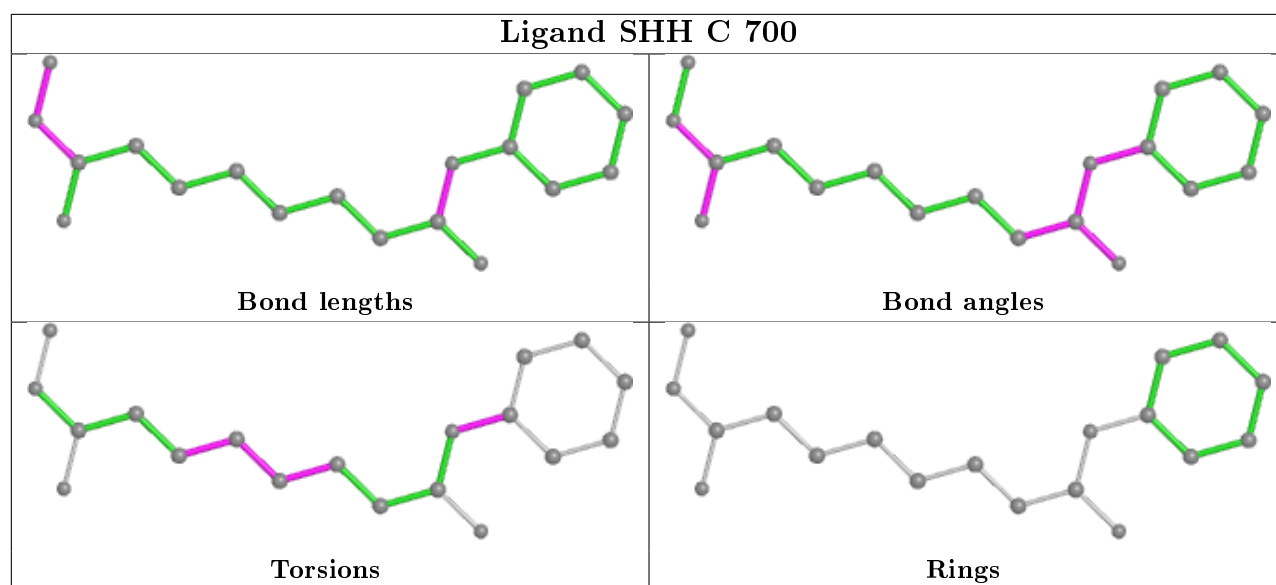
Mol	Chain	Res	Type	Atoms
5	A	700	SHH	C2-C3-C4-C5
5	B	700	SHH	C10-C9-N2-C8
5	B	700	SHH	C14-C9-N2-C8
5	A	700	SHH	C10-C9-N2-C8
5	C	700	SHH	C10-C9-N2-C8
5	A	700	SHH	C14-C9-N2-C8
5	B	700	SHH	C3-C4-C5-C6
4	B	651	GOL	C1-C2-C3-O3
5	C	700	SHH	C2-C3-C4-C5
5	D	700	SHH	C14-C9-N2-C8

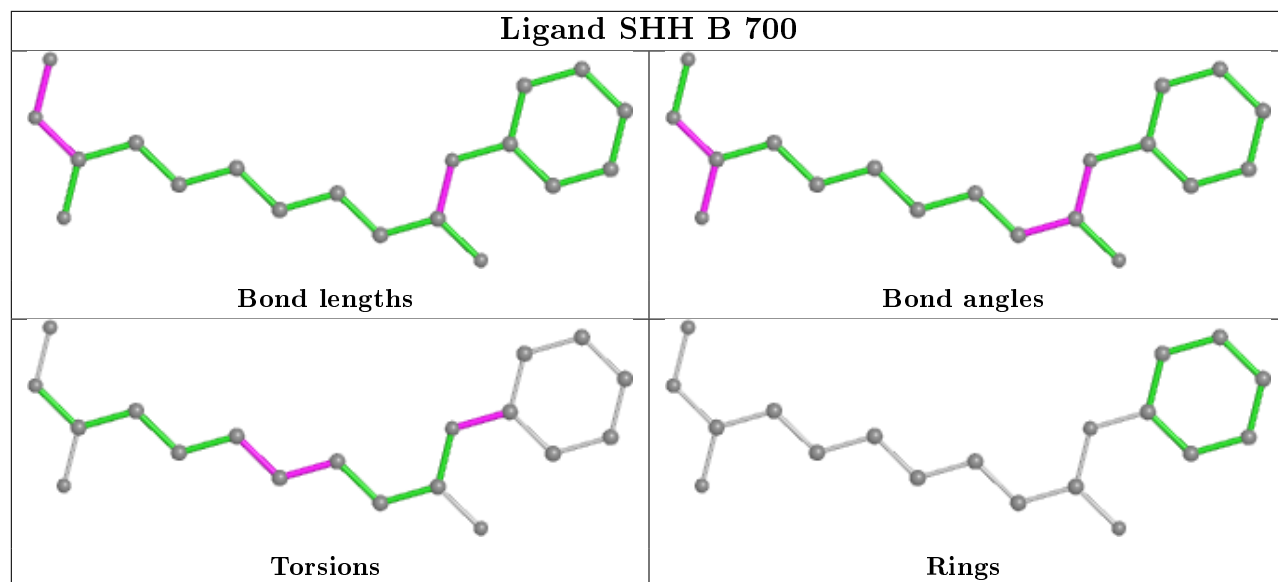
There are no ring outliers.

1 monomer is involved in 3 short contacts:

Mol	Chain	Res	Type	Clashes	Symm-Clashes
5	A	700	SHH	3	0

The following is a two-dimensional graphical depiction of Mogul quality analysis of bond lengths, bond angles, torsion angles, and ring geometry for all instances of the Ligand of Interest. In addition, ligands with molecular weight > 250 and outliers as shown on the validation Tables will also be included. For torsion angles, if less than 5% of the Mogul distribution of torsion angles is within 10 degrees of the torsion angle in question, then that torsion angle is considered an outlier. Any bond that is central to one or more torsion angles identified as an outlier by Mogul will be highlighted in the graph. For rings, the root-mean-square deviation (RMSD) between the ring in question and similar rings identified by Mogul is calculated over all ring torsion angles. If the average RMSD is greater than 60 degrees and the minimal RMSD between the ring in question and any Mogul-identified rings is also greater than 60 degrees, then that ring is considered an outlier. The outliers are highlighted in purple. The color gray indicates Mogul did not find sufficient equivalents in the CSD to analyse the geometry.





## 5.7 Other polymers [i](#)

There are no such residues in this entry.

## 5.8 Polymer linkage issues [i](#)

There are no chain breaks in this entry.

## 6 Fit of model and data ⓘ

### 6.1 Protein, DNA and RNA chains ⓘ

In the following table, the column labelled ‘#RSRZ> 2’ contains the number (and percentage) of RSRZ outliers, followed by percent RSRZ outliers for the chain as percentile scores relative to all X-ray entries and entries of similar resolution. The OWAB column contains the minimum, median, 95<sup>th</sup> percentile and maximum values of the occupancy-weighted average B-factor per residue. The column labelled ‘Q< 0.9’ lists the number of (and percentage) of residues with an average occupancy less than 0.9.

Mol	Chain	Analysed	<RSRZ>	#RSRZ>2		OWAB(Å <sup>2</sup> )	Q<0.9
1	A	397/446 (89%)	0.00	20 (5%)	28 28	16, 25, 55, 83	0
1	B	410/446 (91%)	-0.19	12 (2%)	51 50	13, 21, 42, 91	0
1	C	414/446 (92%)	-0.13	12 (2%)	51 50	12, 22, 45, 89	0
1	D	401/446 (89%)	0.08	23 (5%)	23 23	16, 27, 61, 92	0
All	All	1622/1784 (90%)	-0.06	67 (4%)	37 36	12, 24, 52, 92	0

All (67) RSRZ outliers are listed below:

Mol	Chain	Res	Type	RSRZ
1	D	428	TYR	11.2
1	D	392	PHE	7.0
1	C	225	VAL	6.0
1	A	425	ILE	6.0
1	A	428	TYR	6.0
1	A	432	TYR	6.0
1	D	401	LEU	5.7
1	D	425	ILE	5.6
1	D	426	TYR	5.1
1	B	168	THR	5.0
1	D	432	TYR	4.6
1	A	392	PHE	4.5
1	A	426	TYR	4.3
1	D	168	THR	4.1
1	C	230	LEU	3.9
1	D	315	SER	3.9
1	A	315	SER	3.8
1	D	429	ASP	3.8
1	A	232	ILE	3.7
1	A	429	ASP	3.7
1	D	434	LEU	3.6

*Continued on next page...*

*Continued from previous page...*

Mol	Chain	Res	Type	RSRZ
1	D	365	LYS	3.5
1	D	364	LYS	3.5
1	C	84	LEU	3.5
1	A	433	GLN	3.4
1	C	83	GLU	3.3
1	C	85	THR	3.3
1	D	232	ILE	3.1
1	D	435	TYR	3.1
1	A	224	MET	3.1
1	C	314	CYS	3.0
1	B	314	CYS	3.0
1	B	230	LEU	2.8
1	C	315	SER	2.8
1	A	434	LEU	2.8
1	C	282[A]	CYS	2.8
1	B	394	HIS	2.8
1	D	393	PRO	2.7
1	A	336	LEU	2.7
1	D	383	PRO	2.7
1	D	431	VAL	2.7
1	A	383	PRO	2.7
1	B	402	ASP	2.7
1	D	382	GLY	2.6
1	D	282[A]	CYS	2.6
1	A	282[A]	CYS	2.5
1	B	183	VAL	2.4
1	A	435	TYR	2.4
1	A	280	VAL	2.4
1	C	395	GLU	2.3
1	A	364	LYS	2.3
1	C	168	THR	2.3
1	B	282	CYS	2.2
1	C	177	GLN	2.1
1	B	393	PRO	2.1
1	B	436	ASN	2.1
1	B	280	VAL	2.1
1	A	182	TYR	2.1
1	A	402	ASP	2.1
1	D	283	GLY	2.1
1	A	223	ASN	2.1
1	D	224	MET	2.1
1	D	384	ASP	2.1

*Continued on next page...*

*Continued from previous page...*

Mol	Chain	Res	Type	RSRZ
1	D	433	GLN	2.0
1	C	394	HIS	2.0
1	B	84	LEU	2.0
1	B	425	ILE	2.0

## 6.2 Non-standard residues in protein, DNA, RNA chains [i](#)

There are no non-standard protein/DNA/RNA residues in this entry.

## 6.3 Carbohydrates [i](#)

There are no carbohydrates in this entry.

## 6.4 Ligands [i](#)

In the following table, the Atoms column lists the number of modelled atoms in the group and the number defined in the chemical component dictionary. The B-factors column lists the minimum, median, 95<sup>th</sup> percentile and maximum values of B factors of atoms in the group. The column labelled 'Q< 0.9' lists the number of atoms with occupancy less than 0.9.

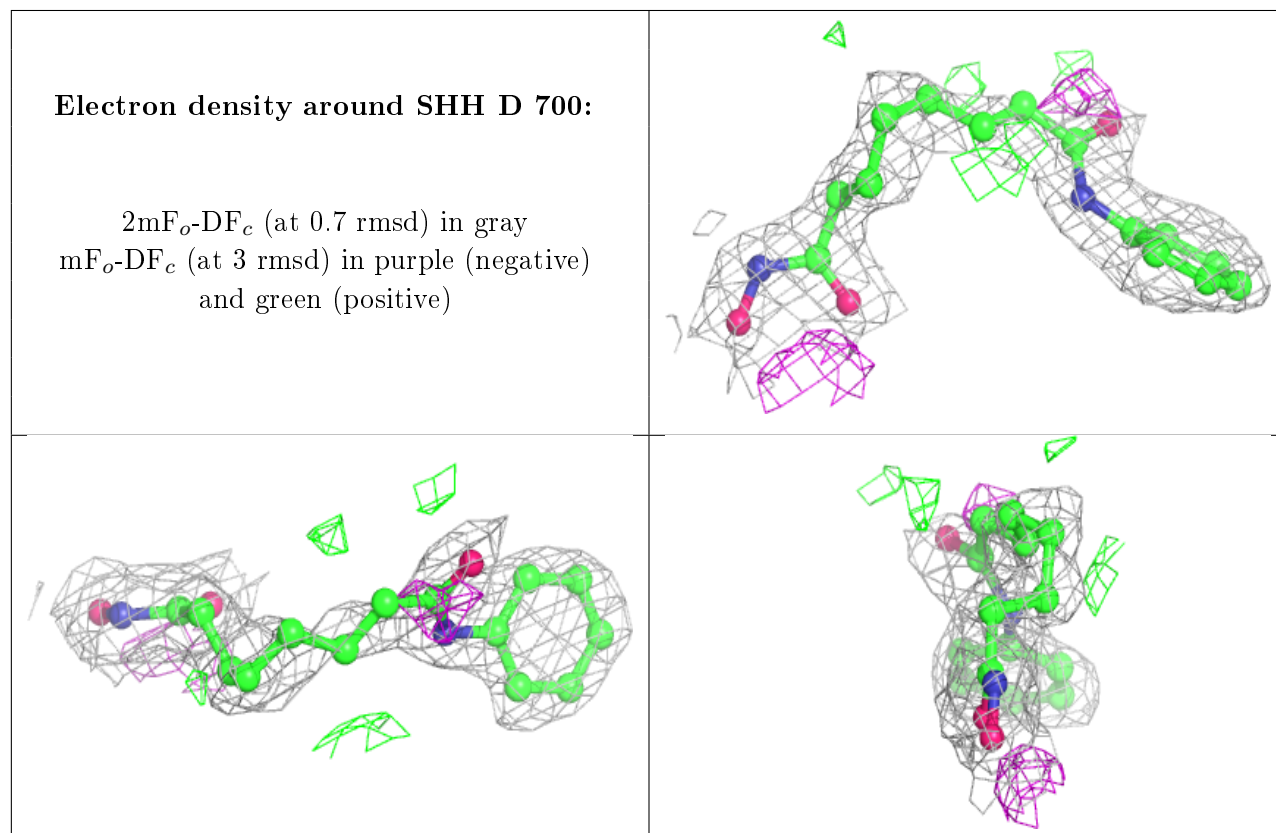
Mol	Type	Chain	Res	Atoms	RSCC	RSR	B-factors(Å <sup>2</sup> )	Q<0.9
6	DMF	C	652	5/5	0.77	0.21	49,50,53,54	0
4	GOL	B	651	6/6	0.83	0.19	27,33,37,38	0
4	GOL	C	651	6/6	0.84	0.18	25,37,39,39	0
6	DMF	B	653	5/5	0.88	0.12	58,59,60,61	0
5	SHH	D	700	19/19	0.90	0.15	26,42,47,47	0
5	SHH	B	700	19/19	0.90	0.18	23,39,48,51	0
5	SHH	A	700	19/19	0.90	0.18	24,46,47,48	0
5	SHH	C	700	19/19	0.91	0.16	19,34,44,45	0
4	GOL	A	651	6/6	0.91	0.15	30,33,34,34	0
6	DMF	B	652	5/5	0.92	0.15	46,49,50,52	0
4	GOL	D	651	6/6	0.92	0.16	25,34,34,36	0
3	K	D	601	1/1	0.99	0.04	24,24,24,24	0
3	K	A	601	1/1	0.99	0.04	21,21,21,21	0
3	K	D	600	1/1	0.99	0.11	17,17,17,17	0
2	ZN	A	500	1/1	1.00	0.03	26,26,26,26	0
3	K	C	601	1/1	1.00	0.05	26,26,26,26	0
3	K	A	600	1/1	1.00	0.12	16,16,16,16	0
2	ZN	B	500	1/1	1.00	0.03	24,24,24,24	0
3	K	C	600	1/1	1.00	0.09	15,15,15,15	0

*Continued on next page...*

*Continued from previous page...*

Mol	Type	Chain	Res	Atoms	RSCC	RSR	B-factors( $\text{\AA}^2$ )	Q<0.9
3	K	B	600	1/1	1.00	0.11	15,15,15,15	0
3	K	B	601	1/1	1.00	0.06	23,23,23,23	0
2	ZN	C	500	1/1	1.00	0.03	26,26,26,26	0
2	ZN	D	500	1/1	1.00	0.03	27,27,27,27	0

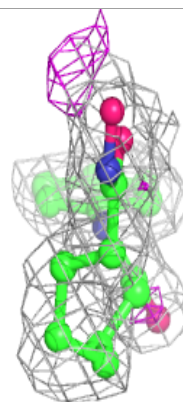
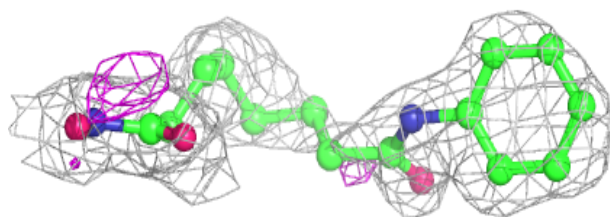
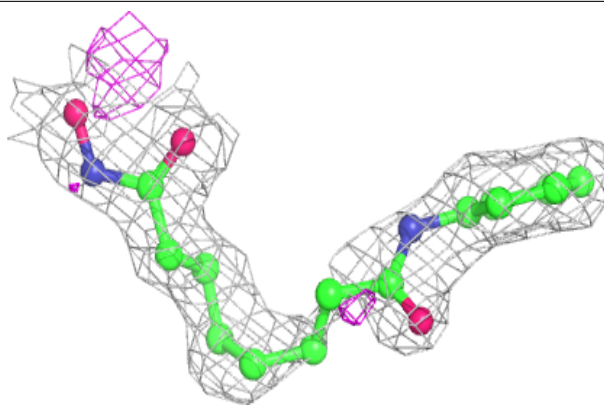
The following is a graphical depiction of the model fit to experimental electron density of all instances of the Ligand of Interest. In addition, ligands with molecular weight > 250 and outliers as shown on the geometry validation Tables will also be included. Each fit is shown from different orientation to approximate a three-dimensional view.



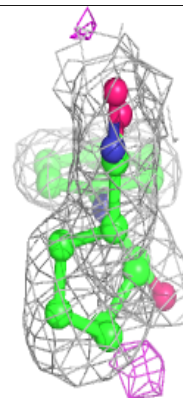
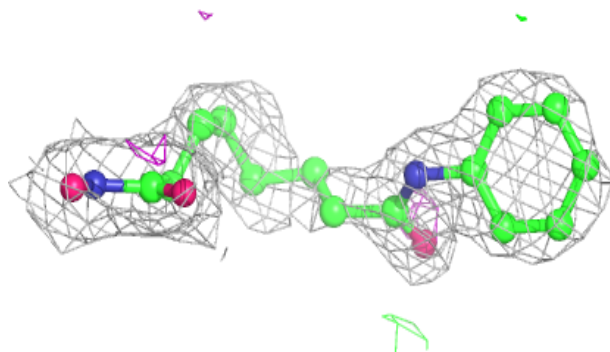
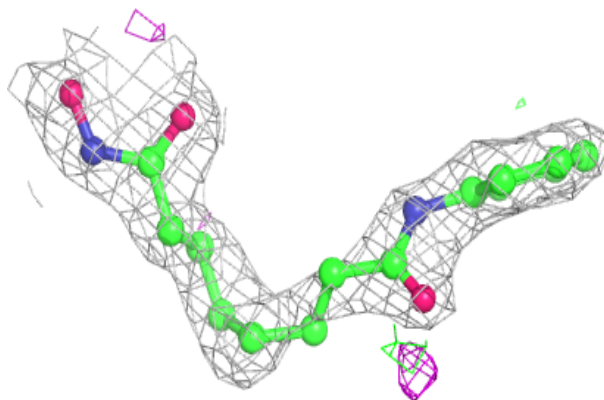


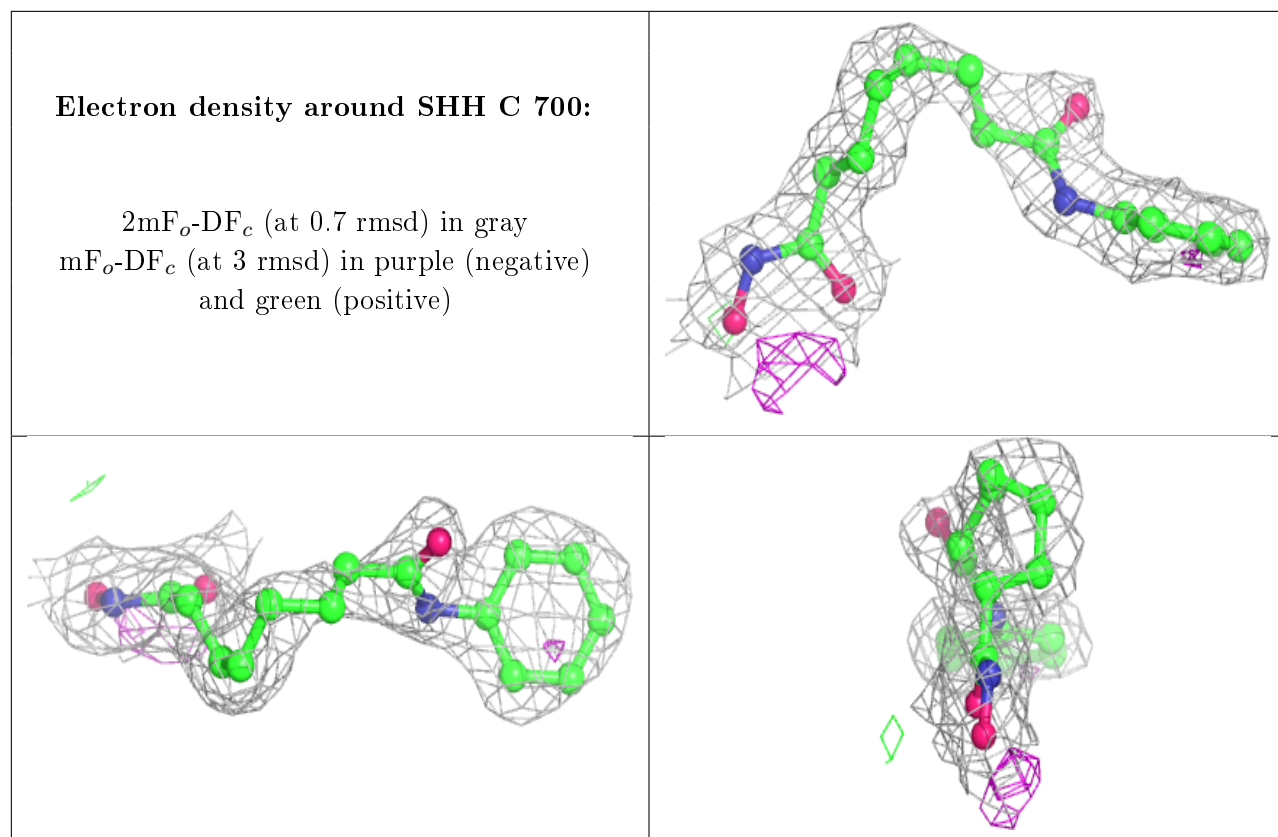
**Electron density around SHH B 700:**

$2mF_o-DF_c$  (at 0.7 rmsd) in gray  
 $mF_o-DF_c$  (at 3 rmsd) in purple (negative)  
and green (positive)

**Electron density around SHH A 700:**

$2mF_o-DF_c$  (at 0.7 rmsd) in gray  
 $mF_o-DF_c$  (at 3 rmsd) in purple (negative)  
and green (positive)





## 6.5 Other polymers [i](#)

There are no such residues in this entry.