



Full wwPDB X-ray Structure Validation Report ⓘ

Aug 20, 2020 – 07:38 PM BST

PDB ID : 6C0O
Title : Crystal structure of HIV-1 K103N mutant reverse transcriptase in complex with non-nucleoside inhibitor 25a
Authors : Yang, Y.; Nguyen, L.A.; Smithline, Z.B.; Steitz, T.A.
Deposited on : 2018-01-01
Resolution : 1.90 Å(reported)

This is a Full wwPDB X-ray Structure Validation Report for a publicly released PDB entry.

We welcome your comments at validation@mail.wwpdb.org

A user guide is available at

<https://www.wwpdb.org/validation/2017/XrayValidationReportHelp>

with specific help available everywhere you see the ⓘ symbol.

The following versions of software and data (see [references ⓘ](#)) were used in the production of this report:

MolProbity : 4.02b-467
Mogul : 1.8.5 (274361), CSD as541be (2020)
Xtriage (Phenix) : 1.13
EDS : 2.13.1
buster-report : 1.1.7 (2018)
Percentile statistics : 20191225.v01 (using entries in the PDB archive December 25th 2019)
Refmac : 5.8.0158
CCP4 : 7.0.044 (Gargrove)
Ideal geometry (proteins) : Engh & Huber (2001)
Ideal geometry (DNA, RNA) : Parkinson et al. (1996)
Validation Pipeline (wwPDB-VP) : 2.13.1

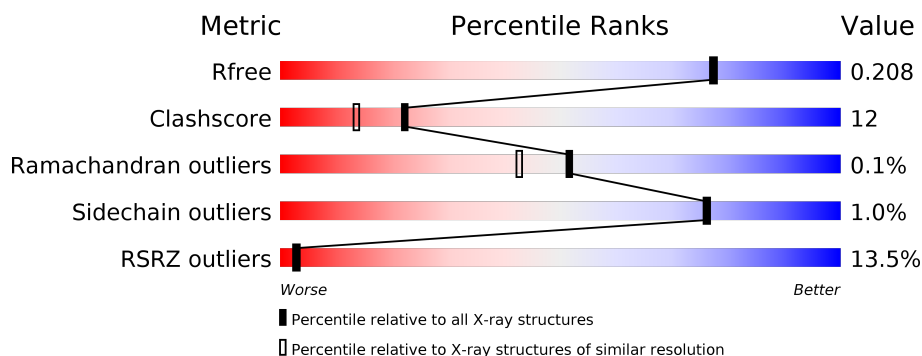
1 Overall quality at a glance

The following experimental techniques were used to determine the structure:

X-RAY DIFFRACTION

The reported resolution of this entry is 1.90 Å.

Percentile scores (ranging between 0-100) for global validation metrics of the entry are shown in the following graphic. The table shows the number of entries on which the scores are based.



Metric	Whole archive (#Entries)	Similar resolution (#Entries, resolution range(Å))
R_{free}	130704	6207 (1.90-1.90)
Clashscore	141614	6847 (1.90-1.90)
Ramachandran outliers	138981	6760 (1.90-1.90)
Sidechain outliers	138945	6760 (1.90-1.90)
RSRZ outliers	127900	6082 (1.90-1.90)

The table below summarises the geometric issues observed across the polymeric chains and their fit to the electron density. The red, orange, yellow and green segments on the lower bar indicate the fraction of residues that contain outliers for ≥ 3 , 2, 1 and 0 types of geometric quality criteria respectively. A grey segment represents the fraction of residues that are not modelled. The numeric value for each fraction is indicated below the corresponding segment, with a dot representing fractions $\leq 5\%$. The upper red bar (where present) indicates the fraction of residues that have poor fit to the electron density. The numeric value is given above the bar.

Mol	Chain	Length	Quality of chain
1	A	557	
2	B	428	

The following table lists non-polymeric compounds, carbohydrate monomers and non-standard residues in protein, DNA, RNA chains that are outliers for geometric or electron-density-fit criteria:

Mol	Type	Chain	Res	Chirality	Geometry	Clashes	Electron density
6	EDO	A	617	-	-	X	X
6	EDO	B	509	-	-	X	-

2 Entry composition

There are 8 unique types of molecules in this entry. The entry contains 8955 atoms, of which 0 are hydrogens and 0 are deuteriums.

In the tables below, the ZeroOcc column contains the number of atoms modelled with zero occupancy, the AltConf column contains the number of residues with at least one atom in alternate conformation and the Trace column contains the number of residues modelled with at most 2 atoms.

- Molecule 1 is a protein called Reverse transcriptase/ribonuclease H.

Mol	Chain	Residues	Atoms					ZeroOcc	AltConf	Trace
1	A	556	Total	C	N	O	S	0	11	0
			4610	2984	767	850	9			

There are 6 discrepancies between the modelled and reference sequences:

Chain	Residue	Modelled	Actual	Comment	Reference
A	-1	MET	-	initiating methionine	UNP P03366
A	0	VAL	-	expression tag	UNP P03366
A	103	ASN	LYS	engineered mutation	UNP P03366
A	172	ALA	LYS	engineered mutation	UNP P03366
A	173	ALA	LYS	engineered mutation	UNP P03366
A	280	SER	CYS	engineered mutation	UNP P03366

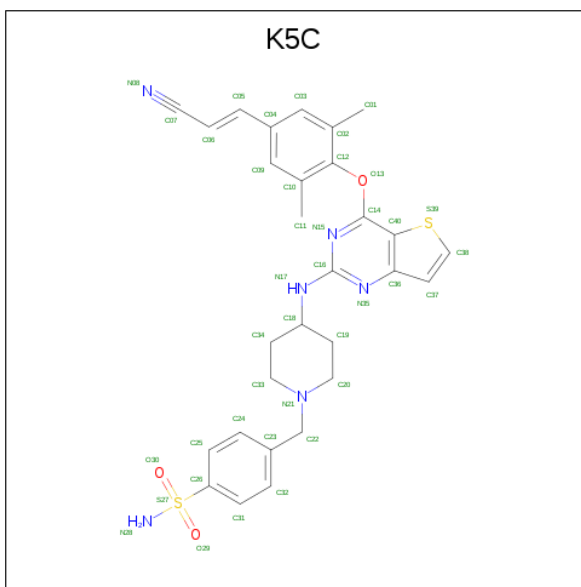
- Molecule 2 is a protein called Reverse transcriptase p51 subunit.

Mol	Chain	Residues	Atoms					ZeroOcc	AltConf	Trace
2	B	412	Total	C	N	O	S	0	8	0
			3472	2262	573	630	7			

There is a discrepancy between the modelled and reference sequences:

Chain	Residue	Modelled	Actual	Comment	Reference
B	280	SER	CYS	engineered mutation	UNP P03366

- Molecule 3 is 4-({4-[(4-{4-[(E)-2-cyanoethenyl]-2,6-dimethylphenoxy}thieno[3,2-d]pyrimidin-2-yl)amino]piperidin-1-yl}methyl)benzene-1-sulfonamide (three-letter code: K5C) (formula: C₂₉H₃₀N₆O₃S₂) (labeled as "Ligand of Interest" by author).

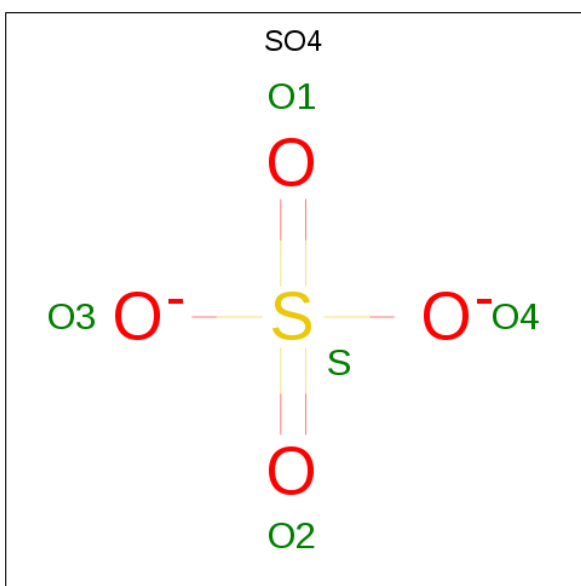


Mol	Chain	Residues	Atoms					ZeroOcc	AltConf
3	A	1	Total	C	N	O	S	0	0
			40	29	6	3	2		

- Molecule 4 is MAGNESIUM ION (three-letter code: MG) (formula: Mg).

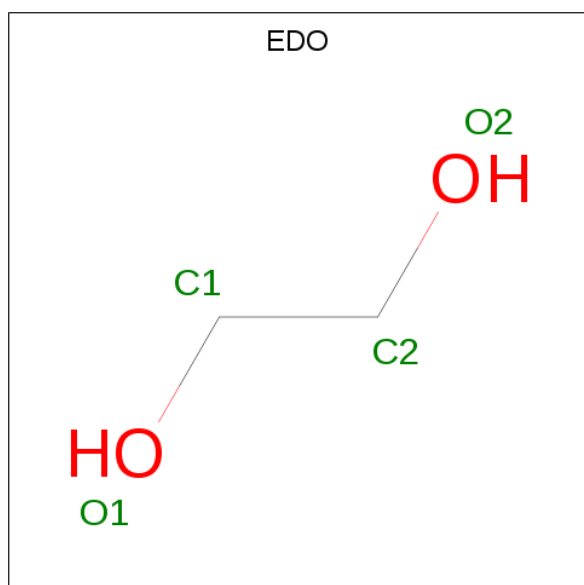
Mol	Chain	Residues	Atoms		ZeroOcc	AltConf
4	A	1	Total	Mg	0	0
			1	1		

- Molecule 5 is SULFATE ION (three-letter code: SO4) (formula: O₄S).



Mol	Chain	Residues	Atoms	ZeroOcc	AltConf
5	A	1	Total O S 5 4 1	0	0
5	A	1	Total O S 5 4 1	0	0
5	A	1	Total O S 5 4 1	0	0
5	A	1	Total O S 5 4 1	0	0
5	A	1	Total O S 5 4 1	0	0
5	A	1	Total O S 5 4 1	0	0
5	B	1	Total O S 5 4 1	0	0
5	B	1	Total O S 5 4 1	0	0
5	B	1	Total O S 5 4 1	0	0
5	B	1	Total O S 5 4 1	0	0

- Molecule 6 is 1,2-ETHANEDIOL (three-letter code: EDO) (formula: C₂H₆O₂).



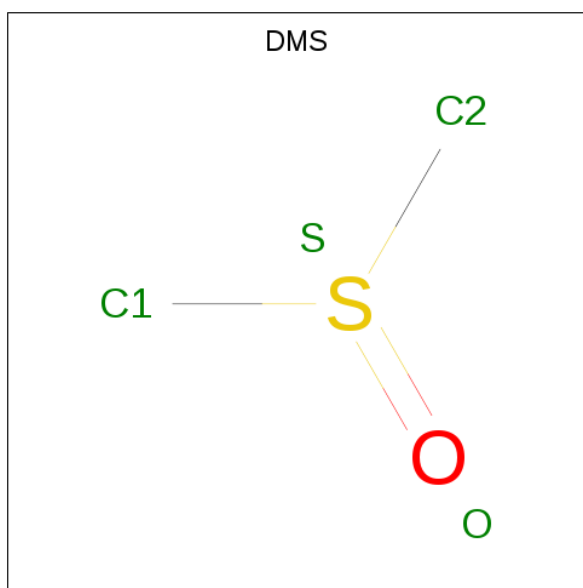
Mol	Chain	Residues	Atoms	ZeroOcc	AltConf
6	A	1	Total C O 4 2 2	0	0
6	A	1	Total C O 4 2 2	0	0

Continued on next page...

Continued from previous page...

Mol	Chain	Residues	Atoms			ZeroOcc	AltConf
6	A	1	Total	C	O	0	0
			4	2	2		
6	A	1	Total	C	O	0	0
			4	2	2		
6	A	1	Total	C	O	0	0
			4	2	2		
6	A	1	Total	C	O	0	0
			4	2	2		
6	A	1	Total	C	O	0	0
			4	2	2		
6	A	1	Total	C	O	0	0
			4	2	2		
6	B	1	Total	C	O	0	0
			4	2	2		
6	B	1	Total	C	O	0	0
			4	2	2		
6	B	1	Total	C	O	0	0
			4	2	2		
6	B	1	Total	C	O	0	0
			4	2	2		
6	B	1	Total	C	O	0	1
			8	4	4		

- Molecule 7 is DIMETHYL SULFOXIDE (three-letter code: DMS) (formula: C₂H₆OS).



Mol	Chain	Residues	Atoms				ZeroOcc	AltConf
7	B	1	Total	C	O	S	0	0
			4	2	1	1		

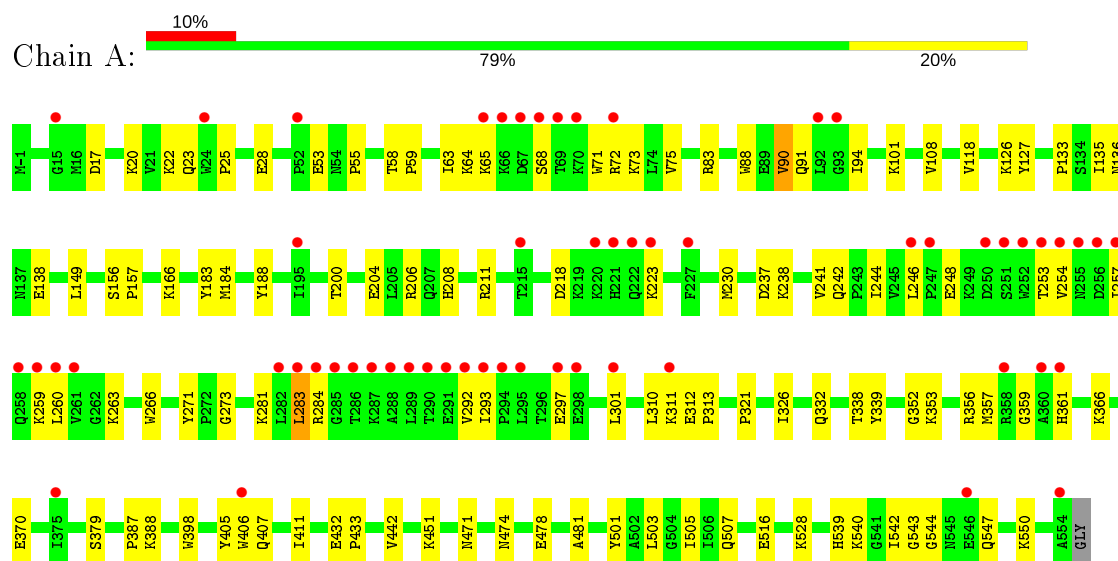
- Molecule 8 is water.

Mol	Chain	Residues	Atoms		ZeroOcc	AltConf
8	A	412	Total	O	0	0
			412	412		
8	B	306	Total	O	0	0
			306	306		

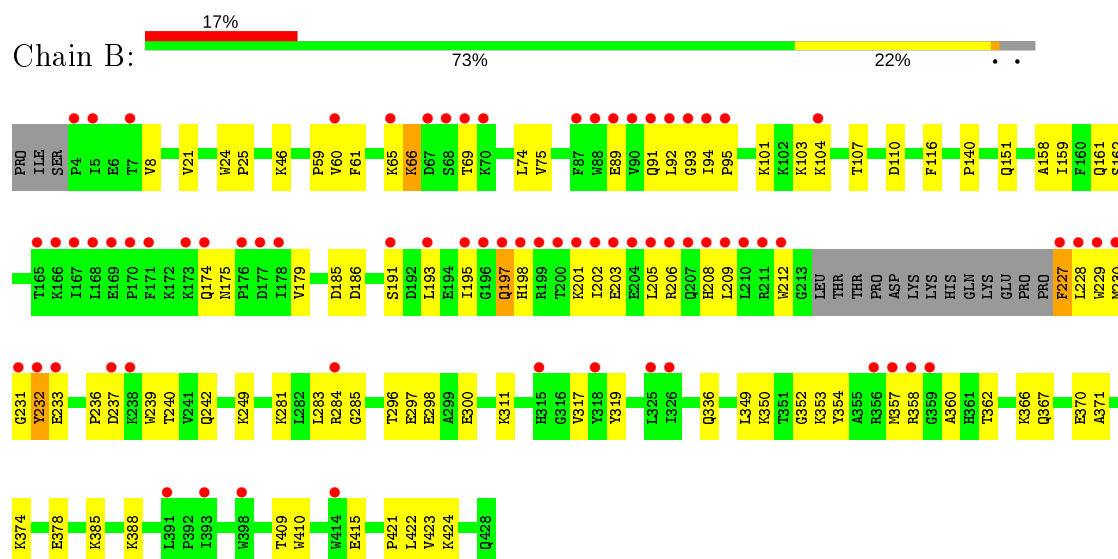
3 Residue-property plots [i](#)

These plots are drawn for all protein, RNA, DNA and oligosaccharide chains in the entry. The first graphic for a chain summarises the proportions of the various outlier classes displayed in the second graphic. The second graphic shows the sequence view annotated by issues in geometry and electron density. Residues are color-coded according to the number of geometric quality criteria for which they contain at least one outlier: green = 0, yellow = 1, orange = 2 and red = 3 or more. A red dot above a residue indicates a poor fit to the electron density ($RSRZ > 2$). Stretches of 2 or more consecutive residues without any outlier are shown as a green connector. Residues present in the sample, but not in the model, are shown in grey.

• Molecule 1: Reverse transcriptase/ribonuclease H



• Molecule 2: Reverse transcriptase p51 subunit



4 Data and refinement statistics

Property	Value	Source
Space group	C 1 2 1	Depositor
Cell constants a, b, c, α , β , γ	162.59Å 73.04Å 109.34Å 90.00° 100.75° 90.00°	Depositor
Resolution (Å)	43.45 – 1.90 43.45 – 1.90	Depositor EDS
% Data completeness (in resolution range)	99.1 (43.45-1.90) 99.1 (43.45-1.90)	Depositor EDS
R_{merge}	0.03	Depositor
R_{sym}	(Not available)	Depositor
$\langle I/\sigma(I) \rangle$ ¹	0.96 (at 1.89Å)	Xtriage
Refinement program	PHENIX (1.12_2829)	Depositor
R, R_{free}	0.178 , 0.209 0.179 , 0.208	Depositor DCC
R_{free} test set	4912 reflections (5.00%)	wwPDB-VP
Wilson B-factor (Å ²)	50.0	Xtriage
Anisotropy	0.069	Xtriage
Bulk solvent k_{sol} (e/Å ³), B_{sol} (Å ²)	0.31 , 61.9	EDS
L-test for twinning ²	$\langle L \rangle = 0.50$, $\langle L^2 \rangle = 0.33$	Xtriage
Estimated twinning fraction	No twinning to report.	Xtriage
F_o, F_c correlation	0.97	EDS
Total number of atoms	8955	wwPDB-VP
Average B, all atoms (Å ²)	68.0	wwPDB-VP

Xtriage's analysis on translational NCS is as follows: *The largest off-origin peak in the Patterson function is 4.37% of the height of the origin peak. No significant pseudotranslation is detected.*

¹Intensities estimated from amplitudes.

²Theoretical values of $\langle |L| \rangle$, $\langle L^2 \rangle$ for acentric reflections are 0.5, 0.333 respectively for untwinned datasets, and 0.375, 0.2 for perfectly twinned datasets.

5 Model quality [i](#)

5.1 Standard geometry [i](#)

Bond lengths and bond angles in the following residue types are not validated in this section: MG, DMS, K5C, EDO, SO4

The Z score for a bond length (or angle) is the number of standard deviations the observed value is removed from the expected value. A bond length (or angle) with $|Z| > 5$ is considered an outlier worth inspection. RMSZ is the root-mean-square of all Z scores of the bond lengths (or angles).

Mol	Chain	Bond lengths		Bond angles	
		RMSZ	# Z >5	RMSZ	# Z >5
1	A	0.38	0/4731	0.50	0/6432
2	B	0.40	0/3571	0.53	0/4849
All	All	0.39	0/8302	0.51	0/11281

There are no bond length outliers.

There are no bond angle outliers.

There are no chirality outliers.

There are no planarity outliers.

5.2 Too-close contacts [i](#)

In the following table, the Non-H and H(model) columns list the number of non-hydrogen atoms and hydrogen atoms in the chain respectively. The H(added) column lists the number of hydrogen atoms added and optimized by MolProbity. The Clashes column lists the number of clashes within the asymmetric unit, whereas Symm-Clashes lists symmetry related clashes.

Mol	Chain	Non-H	H(model)	H(added)	Clashes	Symm-Clashes
1	A	4610	0	4659	105	0
2	B	3472	0	3499	90	0
3	A	40	0	0	0	0
4	A	1	0	0	0	0
5	A	30	0	0	0	0
5	B	20	0	0	0	0
6	A	36	0	54	11	0
6	B	24	0	36	9	0
7	B	4	0	6	2	0
8	A	412	0	0	12	0
8	B	306	0	0	17	0
All	All	8955	0	8254	193	0

The all-atom clashscore is defined as the number of clashes found per 1000 atoms (including hydrogen atoms). The all-atom clashscore for this structure is 12.

All (193) close contacts within the same asymmetric unit are listed below, sorted by their clash magnitude.

Atom-1	Atom-2	Interatomic distance (Å)	Clash overlap (Å)
1:A:406:TRP:H	6:A:617:EDO:H12	1.33	0.93
2:B:385:LYS:HB2	6:B:508:EDO:H21	1.49	0.93
2:B:91:GLN:HG3	2:B:92:LEU:H	1.34	0.90
2:B:193:LEU:HD13	2:B:197:GLN:HB3	1.56	0.86
2:B:66:LYS:HE3	2:B:358:ARG:HH22	1.43	0.83
1:A:65:LYS:HB2	1:A:68:SER:HB2	1.62	0.81
2:B:239:TRP:HB3	2:B:350:LYS:HE2	1.64	0.80
1:A:478:GLU:HG2	8:A:916:HOH:O	1.84	0.77
1:A:63:ILE:HB	1:A:72:ARG:HD3	1.63	0.77
1:A:332:GLN:NE2	1:A:338[A]:THR:HG23	1.99	0.77
1:A:406:TRP:N	6:A:617:EDO:H12	2.02	0.74
2:B:240:THR:O	2:B:350:LYS:HD2	1.87	0.73
1:A:28:GLU:HG3	1:A:135:ILE:HD12	1.71	0.73
1:A:359:GLY:HA3	8:A:701:HOH:O	1.89	0.72
2:B:110:ASP:HB3	2:B:228:LEU:CD2	2.20	0.72
2:B:360:ALA:HB2	2:B:366:LYS:HD3	1.72	0.72
2:B:110:ASP:HB3	2:B:228:LEU:HD23	1.70	0.72
2:B:424:LYS:HD2	8:B:759:HOH:O	1.89	0.72
7:B:501:DMS:H12	8:B:641:HOH:O	1.90	0.71
2:B:239:TRP:HB3	2:B:350:LYS:CE	2.21	0.70
2:B:104:LYS:HA	2:B:237:ASP:OD1	1.92	0.70
2:B:91:GLN:HG3	2:B:92:LEU:N	2.05	0.70
2:B:352:GLY:HA2	6:B:509:EDO:H22	1.74	0.69
1:A:353:LYS:H	6:A:613:EDO:H12	1.58	0.69
1:A:297:GLU:O	1:A:301:LEU:HD13	1.94	0.68
2:B:107:THR:HA	2:B:232:TYR:O	1.93	0.68
2:B:385:LYS:HB2	6:B:508:EDO:C2	2.24	0.67
2:B:353:LYS:O	6:B:509:EDO:H11	1.94	0.66
1:A:326[B]:ILE:HD13	1:A:388:LYS:HB2	1.77	0.65
1:A:73:LYS:HE2	1:A:75:VAL:HG23	1.78	0.65
1:A:241[B]:VAL:HG12	1:A:242:GLN:O	1.96	0.65
2:B:66:LYS:HE3	2:B:358:ARG:NH2	2.11	0.65
1:A:63:ILE:O	1:A:72:ARG:HG2	1.98	0.64
1:A:361:HIS:HB2	8:A:981:HOH:O	1.98	0.63
1:A:543:GLY:HA3	2:B:283:LEU:O	1.98	0.62
1:A:547:GLN:O	1:A:550:LYS:HG2	1.99	0.62
2:B:239:TRP:CB	2:B:350:LYS:HE2	2.30	0.62

Continued on next page...

Continued from previous page...

Atom-1	Atom-2	Interatomic distance (Å)	Clash overlap (Å)
1:A:474:ASN:HB2	6:A:612:EDO:H11	1.81	0.61
1:A:241[B]:VAL:HG11	1:A:244:ILE:HD11	1.82	0.61
1:A:246:LEU:HD22	1:A:260:LEU:CD1	2.30	0.61
1:A:311:LYS:HG3	1:A:312:GLU:HG3	1.83	0.61
7:B:501:DMS:H11	8:B:799:HOH:O	2.00	0.60
2:B:89:GLU:H	2:B:89:GLU:CD	2.02	0.60
2:B:360:ALA:HB3	8:B:703:HOH:O	2.00	0.60
2:B:249[A]:LYS:NZ	8:B:609:HOH:O	2.34	0.60
1:A:254:VAL:HG22	1:A:293:ILE:HD12	1.84	0.59
1:A:63:ILE:HB	1:A:72:ARG:CD	2.32	0.59
2:B:409[A]:THR:HG22	8:B:741:HOH:O	2.03	0.58
2:B:89:GLU:HB3	2:B:158:ALA:HB1	1.85	0.58
2:B:174:GLN:HG3	2:B:175:ASN:OD1	2.04	0.58
2:B:60[B]:VAL:HG12	2:B:75:VAL:HG22	1.86	0.57
2:B:409[A]:THR:HG23	8:B:716:HOH:O	2.03	0.57
2:B:185:ASP:HB2	2:B:409[A]:THR:HG21	1.87	0.57
2:B:228:LEU:HD23	8:B:629:HOH:O	2.05	0.56
2:B:65:LYS:NZ	8:B:612:HOH:O	2.38	0.56
1:A:281:LYS:O	1:A:284:ARG:HG3	2.05	0.56
1:A:405:TYR:CE2	1:A:407:GLN:HB2	2.41	0.56
1:A:23:GLN:HG2	1:A:133:PRO:HD3	1.87	0.55
1:A:188:TYR:OH	1:A:223:LYS:NZ	2.36	0.55
1:A:22:LYS:NZ	8:A:710:HOH:O	2.39	0.55
1:A:101[B]:LYS:HD3	1:A:321:PRO:HG3	1.88	0.55
1:A:338[A]:THR:HG22	8:A:834:HOH:O	2.06	0.54
2:B:336:GLN:HA	2:B:354:TYR:O	2.07	0.54
2:B:317:VAL:CG1	2:B:349:LEU:HD23	2.37	0.54
2:B:353:LYS:H	6:B:509:EDO:H11	1.72	0.54
2:B:388:LYS:HE3	2:B:415:GLU:OE1	2.07	0.53
1:A:65:LYS:CB	1:A:68:SER:HB2	2.35	0.53
1:A:259:LYS:NZ	1:A:263:LYS:HE3	2.23	0.53
2:B:195:ILE:HA	2:B:198:HIS:HB3	1.90	0.53
2:B:91:GLN:CG	2:B:92:LEU:H	2.13	0.53
2:B:101:LYS:O	2:B:236:PRO:HB2	2.09	0.53
2:B:362:THR:HG21	8:B:829:HOH:O	2.08	0.53
1:A:20[B]:LYS:HZ1	1:A:55:PRO:HB2	1.74	0.52
1:A:241[B]:VAL:HG13	1:A:266:TRP:HE1	1.75	0.52
2:B:319:TYR:OH	2:B:385:LYS:HE2	2.09	0.52
1:A:20[B]:LYS:NZ	1:A:55:PRO:HB2	2.24	0.52
1:A:503:LEU:HD23	2:B:422:LEU:HD13	1.91	0.52
1:A:516:GLU:HA	1:A:516:GLU:OE1	2.10	0.52

Continued on next page...

Continued from previous page...

Atom-1	Atom-2	Interatomic distance (Å)	Clash overlap (Å)
2:B:352:GLY:CA	6:B:509:EDO:H22	2.40	0.52
1:A:208:HIS:O	1:A:211:ARG:HG2	2.10	0.51
1:A:28:GLU:HG3	1:A:135:ILE:CD1	2.39	0.51
1:A:90:VAL:HG22	2:B:140:PRO:HB3	1.91	0.51
1:A:357:MET:HE2	1:A:370:GLU:OE2	2.09	0.51
1:A:63:ILE:HB	1:A:72:ARG:CG	2.40	0.51
2:B:205:LEU:O	2:B:209:LEU:HG	2.11	0.51
2:B:69:THR:HA	8:B:837:HOH:O	2.09	0.51
2:B:298:GLU:N	2:B:298:GLU:OE1	2.37	0.50
1:A:90:VAL:HG23	8:A:873:HOH:O	2.12	0.50
2:B:162:SER:HB2	8:B:700:HOH:O	2.11	0.50
1:A:503:LEU:O	1:A:507[A]:GLN:HG3	2.11	0.50
2:B:103:LYS:HE3	2:B:179:VAL:HG23	1.93	0.49
2:B:175:ASN:HD21	2:B:201:LYS:HE3	1.77	0.49
1:A:183:TYR:C	1:A:184[B]:MET:HG3	2.33	0.49
1:A:257:ILE:HB	1:A:283:LEU:HD21	1.95	0.49
2:B:228:LEU:O	2:B:229:TRP:HB3	2.12	0.49
1:A:544:GLY:N	2:B:285:GLY:O	2.45	0.49
1:A:246:LEU:HD22	1:A:260:LEU:HD11	1.94	0.49
1:A:53:GLU:OE1	1:A:53:GLU:N	2.32	0.49
1:A:353:LYS:H	6:A:613:EDO:C1	2.24	0.49
1:A:63:ILE:HG22	1:A:64:LYS:N	2.27	0.49
2:B:110:ASP:HB3	2:B:228:LEU:HD22	1.95	0.48
2:B:186:ASP:HB2	8:B:628:HOH:O	2.12	0.48
1:A:398:TRP:CH2	1:A:411[A]:ILE:HG12	2.48	0.48
1:A:63:ILE:HG22	1:A:64:LYS:H	1.79	0.48
1:A:101[A]:LYS:HD3	1:A:321:PRO:HG3	1.94	0.48
1:A:90:VAL:HG13	1:A:90:VAL:O	2.14	0.48
6:B:509:EDO:H21	8:B:782:HOH:O	2.14	0.48
1:A:528:LYS:NZ	6:A:615:EDO:H11	2.29	0.47
1:A:223:LYS:HA	8:A:1053:HOH:O	2.13	0.47
2:B:227:PHE:O	2:B:228:LEU:HB3	2.13	0.47
1:A:63:ILE:C	1:A:72:ARG:HG2	2.35	0.47
2:B:21:VAL:HB	2:B:59:PRO:HD3	1.95	0.47
1:A:292:VAL:CG2	1:A:292:VAL:O	2.63	0.47
2:B:175:ASN:ND2	2:B:201:LYS:HE3	2.30	0.47
2:B:93:GLY:O	2:B:95:PRO:HD3	2.14	0.47
1:A:206:ARG:NH2	1:A:218:ASP:OD1	2.47	0.47
2:B:296:THR:O	2:B:300:GLU:HG3	2.15	0.47
1:A:25:PRO:HA	8:A:931:HOH:O	2.13	0.47
2:B:360:ALA:HB2	2:B:366:LYS:CD	2.44	0.47

Continued on next page...

Continued from previous page...

Atom-1	Atom-2	Interatomic distance (Å)	Clash overlap (Å)
1:A:366:LYS:O	1:A:370:GLU:HG3	2.15	0.46
1:A:64:LYS:HE2	1:A:71:TRP:CE2	2.51	0.46
1:A:253:THR:HA	1:A:292:VAL:HA	1.97	0.46
1:A:540:LYS:HB2	1:A:542:ILE:CD1	2.45	0.46
2:B:421:PRO:HB2	2:B:423:VAL:HG22	1.96	0.46
1:A:241[B]:VAL:HG13	1:A:266:TRP:NE1	2.31	0.46
2:B:46:LYS:HE2	2:B:116:PHE:HB3	1.97	0.46
2:B:311:LYS:HE3	8:B:621:HOH:O	2.15	0.46
1:A:108:VAL:HG22	1:A:188:TYR:CD2	2.51	0.45
2:B:357:MET:HE3	2:B:371:ALA:HB2	1.98	0.45
2:B:370:GLU:O	2:B:374:LYS:HG3	2.17	0.45
2:B:8:VAL:HG21	2:B:159:ILE:HG23	1.99	0.45
2:B:233:GLU:HG2	2:B:233:GLU:O	2.17	0.45
2:B:353:LYS:H	6:B:509:EDO:C1	2.28	0.45
1:A:246:LEU:HD11	1:A:310:LEU:HD12	1.99	0.45
1:A:361:HIS:O	8:A:701:HOH:O	2.21	0.45
1:A:405:TYR:HA	6:A:617:EDO:H11	1.97	0.45
1:A:156:SER:HB2	1:A:157:PRO:HD3	1.98	0.45
1:A:237:ASP:O	1:A:238:LYS:HD3	2.16	0.45
1:A:356:ARG:HG2	1:A:357:MET:O	2.17	0.44
1:A:550:LYS:HD2	8:A:940:HOH:O	2.16	0.44
1:A:94:ILE:CD1	1:A:230:MET:HG3	2.47	0.44
1:A:246:LEU:HD22	1:A:260:LEU:HD12	1.97	0.44
1:A:332:GLN:CD	1:A:338[A]:THR:HG23	2.37	0.44
2:B:191:SER:HG	2:B:198:HIS:CE1	2.34	0.44
1:A:259:LYS:NZ	1:A:263:LYS:HG3	2.32	0.44
1:A:118:VAL:HG11	1:A:149:LEU:HD11	2.00	0.44
2:B:242:GLN:O	8:B:601:HOH:O	2.21	0.44
2:B:354:TYR:HB3	2:B:357:MET:HE2	2.00	0.43
1:A:273:GLY:HA2	1:A:338[A]:THR:HG21	2.00	0.43
2:B:410:TRP:HA	6:B:507:EDO:H21	2.00	0.43
1:A:101[B]:LYS:HD3	1:A:321:PRO:CG	2.48	0.43
1:A:539:HIS:HA	8:A:1036:HOH:O	2.19	0.43
2:B:198:HIS:O	2:B:202:ILE:HG12	2.19	0.43
2:B:161:GLN:HG3	8:B:705:HOH:O	2.17	0.43
2:B:151:GLN:HB3	2:B:185:ASP:OD2	2.17	0.43
2:B:239:TRP:CA	2:B:350:LYS:HE2	2.48	0.43
1:A:405:TYR:HA	6:A:617:EDO:C1	2.49	0.43
1:A:73:LYS:HE2	1:A:75:VAL:CG2	2.47	0.43
2:B:203:GLU:OE1	2:B:206:ARG:HD2	2.18	0.43
1:A:90:VAL:HB	8:A:712:HOH:O	2.18	0.43

Continued on next page...

Continued from previous page...

Atom-1	Atom-2	Interatomic distance (Å)	Clash overlap (Å)
1:A:259:LYS:HZ2	1:A:263:LYS:HE3	1.83	0.43
2:B:24:TRP:HB2	2:B:25:PRO:HD2	2.01	0.43
2:B:354:TYR:CB	2:B:357:MET:HE2	2.49	0.43
2:B:357:MET:CE	2:B:371:ALA:HB2	2.49	0.43
1:A:442:VAL:HB	1:A:481:ALA:HB1	2.01	0.42
1:A:136:ASN:O	1:A:138:GLU:HG3	2.19	0.42
1:A:200:THR:O	1:A:204:GLU:HG3	2.19	0.42
1:A:353:LYS:O	6:A:613:EDO:H12	2.20	0.42
2:B:193:LEU:CD1	2:B:198:HIS:N	2.82	0.42
1:A:503:LEU:CD2	2:B:422:LEU:HD13	2.49	0.42
2:B:191:SER:OG	2:B:198:HIS:ND1	2.51	0.42
1:A:244:ILE:HG22	1:A:310:LEU:HD13	2.01	0.42
2:B:230:MET:HG2	2:B:231:GLY:N	2.34	0.42
1:A:379:SER:CB	1:A:387:PRO:HD3	2.50	0.42
1:A:501:TYR:CZ	1:A:505:ILE:HD11	2.55	0.42
1:A:58:THR:HG23	1:A:59:PRO:HD2	2.02	0.42
2:B:66:LYS:HB3	2:B:230:MET:CE	2.50	0.42
2:B:208:HIS:O	2:B:212:TRP:HD1	2.03	0.42
2:B:61:PHE:CZ	2:B:74:LEU:HD23	2.56	0.41
1:A:88:TRP:CH2	6:A:616:EDO:H21	2.56	0.41
2:B:357:MET:HB2	2:B:367:GLN:HG2	2.01	0.41
2:B:354:TYR:OH	2:B:378:GLU:OE2	2.33	0.41
1:A:126:LYS:HE3	1:A:127:TYR:CZ	2.55	0.41
2:B:46:LYS:HZ3	2:B:116:PHE:HD2	1.67	0.41
2:B:281:LYS:O	2:B:284:ARG:HG2	2.20	0.41
1:A:271:TYR:OH	1:A:313:PRO:HA	2.20	0.41
1:A:17:ASP:O	1:A:83:ARG:HD3	2.21	0.41
1:A:246:LEU:CD1	1:A:310:LEU:HD12	2.51	0.41
1:A:339:TYR:CZ	1:A:352:GLY:HA3	2.56	0.40
1:A:432:GLU:HB3	1:A:433:PRO:HD2	2.03	0.40
1:A:259:LYS:HZ2	1:A:263:LYS:HG3	1.87	0.40
1:A:166:LYS:HG2	6:A:610:EDO:H11	2.03	0.40
1:A:451:LYS:HB3	1:A:471:ASN:HA	2.04	0.40

There are no symmetry-related clashes.

5.3 Torsion angles [i](#)

5.3.1 Protein backbone [i](#)

In the following table, the Percentiles column shows the percent Ramachandran outliers of the chain as a percentile score with respect to all X-ray entries followed by that with respect to entries of similar resolution.

The Analysed column shows the number of residues for which the backbone conformation was analysed, and the total number of residues.

Mol	Chain	Analysed	Favoured	Allowed	Outliers	Percentiles	
1	A	565/557 (101%)	548 (97%)	17 (3%)	0	100	100
2	B	416/428 (97%)	397 (95%)	18 (4%)	1 (0%)	47	38
All	All	981/985 (100%)	945 (96%)	35 (4%)	1 (0%)	51	43

All (1) Ramachandran outliers are listed below:

Mol	Chain	Res	Type
2	B	66	LYS

5.3.2 Protein sidechains [i](#)

In the following table, the Percentiles column shows the percent sidechain outliers of the chain as a percentile score with respect to all X-ray entries followed by that with respect to entries of similar resolution.

The Analysed column shows the number of residues for which the sidechain conformation was analysed, and the total number of residues.

Mol	Chain	Analysed	Rotameric	Outliers	Percentiles	
1	A	506/495 (102%)	502 (99%)	4 (1%)	81	82
2	B	382/390 (98%)	377 (99%)	5 (1%)	69	68
All	All	888/885 (100%)	879 (99%)	9 (1%)	76	76

All (9) residues with a non-rotameric sidechain are listed below:

Mol	Chain	Res	Type
1	A	90	VAL
1	A	91	GLN
1	A	248	GLU
1	A	283	LEU
2	B	94	ILE

Continued on next page...

Continued from previous page...

Mol	Chain	Res	Type
2	B	197	GLN
2	B	227	PHE
2	B	232	TYR
2	B	297	GLU

Some sidechains can be flipped to improve hydrogen bonding and reduce clashes. All (1) such sidechains are listed below:

Mol	Chain	Res	Type
2	B	394	GLN

5.3.3 RNA [i](#)

There are no RNA molecules in this entry.

5.4 Non-standard residues in protein, DNA, RNA chains [i](#)

There are no non-standard protein/DNA/RNA residues in this entry.

5.5 Carbohydrates [i](#)

There are no monosaccharides in this entry.

5.6 Ligand geometry [i](#)

Of 28 ligands modelled in this entry, 1 is monoatomic - leaving 27 for Mogul analysis.

In the following table, the Counts columns list the number of bonds (or angles) for which Mogul statistics could be retrieved, the number of bonds (or angles) that are observed in the model and the number of bonds (or angles) that are defined in the Chemical Component Dictionary. The Link column lists molecule types, if any, to which the group is linked. The Z score for a bond length (or angle) is the number of standard deviations the observed value is removed from the expected value. A bond length (or angle) with $|Z| > 2$ is considered an outlier worth inspection. RMSZ is the root-mean-square of all Z scores of the bond lengths (or angles).

Mol	Type	Chain	Res	Link	Bond lengths			Bond angles		
					Counts	RMSZ	$\# Z > 2$	Counts	RMSZ	$\# Z > 2$
7	DMS	B	501	-	3,3,3	0.65	0	3,3,3	0.65	0
6	EDO	A	611	-	3,3,3	0.43	0	2,2,2	0.43	0
5	SO4	B	504	-	4,4,4	0.13	0	6,6,6	0.08	0
5	SO4	A	605	-	4,4,4	0.15	0	6,6,6	0.12	0

Mol	Type	Chain	Res	Link	Bond lengths			Bond angles		
					Counts	RMSZ	# Z > 2	Counts	RMSZ	# Z > 2
5	SO4	A	608	-	4,4,4	0.15	0	6,6,6	0.06	0
6	EDO	A	610	-	3,3,3	0.48	0	2,2,2	0.22	0
6	EDO	B	508	-	3,3,3	0.49	0	2,2,2	0.28	0
6	EDO	B	510[B]	-	3,3,3	0.52	0	2,2,2	0.20	0
6	EDO	A	609	-	3,3,3	0.50	0	2,2,2	0.23	0
6	EDO	B	510[A]	-	3,3,3	0.51	0	2,2,2	0.23	0
5	SO4	A	603	-	4,4,4	0.14	0	6,6,6	0.07	0
5	SO4	A	607	-	4,4,4	0.15	0	6,6,6	0.12	0
5	SO4	B	505	-	4,4,4	0.13	0	6,6,6	0.10	0
5	SO4	B	502	-	4,4,4	0.13	0	6,6,6	0.09	0
5	SO4	A	606	-	4,4,4	0.14	0	6,6,6	0.08	0
6	EDO	A	612	-	3,3,3	0.44	0	2,2,2	0.48	0
5	SO4	B	503	-	4,4,4	0.15	0	6,6,6	0.07	0
6	EDO	A	614	-	3,3,3	0.42	0	2,2,2	0.66	0
6	EDO	A	616	-	3,3,3	0.43	0	2,2,2	0.38	0
6	EDO	B	507	-	3,3,3	0.47	0	2,2,2	0.44	0
6	EDO	A	615	-	3,3,3	0.49	0	2,2,2	0.39	0
3	K5C	A	601	-	42,44,44	1.25	3 (7%)	51,63,63	2.08	14 (27%)
5	SO4	A	604	-	4,4,4	0.14	0	6,6,6	0.09	0
6	EDO	B	506	-	3,3,3	0.53	0	2,2,2	0.02	0
6	EDO	A	617	-	3,3,3	0.43	0	2,2,2	0.34	0
6	EDO	B	509	-	3,3,3	0.46	0	2,2,2	0.29	0
6	EDO	A	613	-	3,3,3	0.42	0	2,2,2	0.36	0

In the following table, the Chirals column lists the number of chiral outliers, the number of chiral centers analysed, the number of these observed in the model and the number defined in the Chemical Component Dictionary. Similar counts are reported in the Torsion and Rings columns. '-' means no outliers of that kind were identified.

Mol	Type	Chain	Res	Link	Chirals	Torsions	Rings
6	EDO	B	508	-	-	0/1/1/1	-
6	EDO	A	611	-	-	0/1/1/1	-
6	EDO	A	614	-	-	0/1/1/1	-
6	EDO	B	506	-	-	0/1/1/1	-
6	EDO	B	509	-	-	0/1/1/1	-
3	K5C	A	601	-	-	3/21/32/32	0/5/5/5
6	EDO	A	610	-	-	0/1/1/1	-
6	EDO	A	617	-	-	0/1/1/1	-
6	EDO	B	510[B]	-	-	0/1/1/1	-
6	EDO	A	616	-	-	0/1/1/1	-
6	EDO	B	510[A]	-	-	0/1/1/1	-
6	EDO	B	507	-	-	0/1/1/1	-

Continued on next page...

Continued from previous page...

Mol	Type	Chain	Res	Link	Chirals	Torsions	Rings
6	EDO	A	612	-	-	0/1/1/1	-
6	EDO	A	609	-	-	0/1/1/1	-
6	EDO	A	613	-	-	1/1/1/1	-
6	EDO	A	615	-	-	1/1/1/1	-

All (3) bond length outliers are listed below:

Mol	Chain	Res	Type	Atoms	Z	Observed(Å)	Ideal(Å)
3	A	601	K5C	S27-N28	3.27	1.66	1.60
3	A	601	K5C	C20-N21	2.86	1.54	1.46
3	A	601	K5C	C33-N21	2.39	1.53	1.46

All (14) bond angle outliers are listed below:

Mol	Chain	Res	Type	Atoms	Z	Observed(°)	Ideal(°)
3	A	601	K5C	C31-C26-C25	-5.76	112.41	120.44
3	A	601	K5C	C32-C31-C26	5.64	125.28	119.45
3	A	601	K5C	C22-N21-C20	-4.77	100.45	111.06
3	A	601	K5C	C24-C25-C26	4.70	124.31	119.45
3	A	601	K5C	C16-N17-C18	3.62	130.42	124.31
3	A	601	K5C	C31-C26-S27	3.26	124.46	119.73
3	A	601	K5C	O29-S27-C26	3.13	110.84	107.35
3	A	601	K5C	C33-N21-C20	2.86	115.26	108.83
3	A	601	K5C	C01-C02-C03	2.75	124.57	119.49
3	A	601	K5C	O13-C14-C40	2.44	119.67	115.69
3	A	601	K5C	C22-C23-C32	2.42	125.32	120.77
3	A	601	K5C	O30-S27-O29	-2.38	114.84	118.76
3	A	601	K5C	C25-C26-S27	2.34	123.13	119.73
3	A	601	K5C	C09-C04-C03	-2.27	116.03	119.12

There are no chirality outliers.

All (5) torsion outliers are listed below:

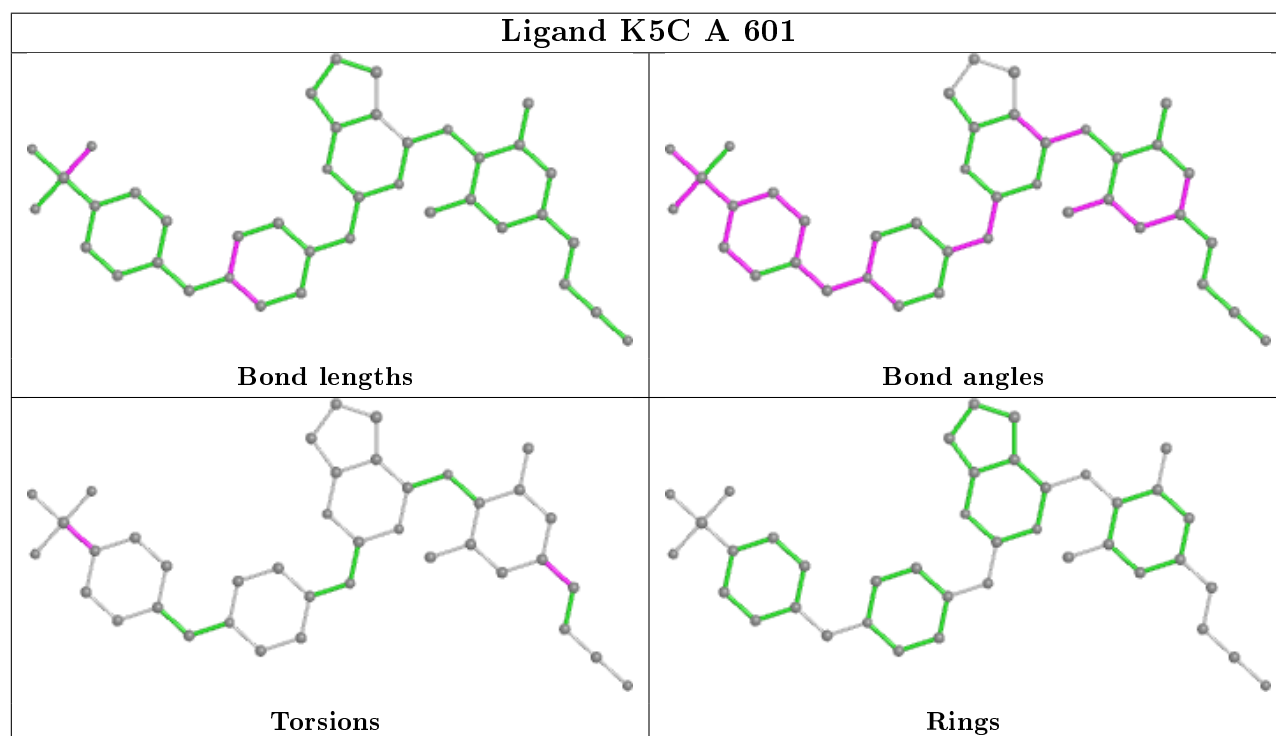
Mol	Chain	Res	Type	Atoms
3	A	601	K5C	C03-C04-C05-C06
3	A	601	K5C	C09-C04-C05-C06
6	A	615	EDO	O1-C1-C2-O2
6	A	613	EDO	O1-C1-C2-O2
3	A	601	K5C	C31-C26-S27-O29

There are no ring outliers.

10 monomers are involved in 22 short contacts:

Mol	Chain	Res	Type	Clashes	Symm-Clashes
7	B	501	DMS	2	0
6	A	610	EDO	1	0
6	B	508	EDO	2	0
6	A	612	EDO	1	0
6	A	616	EDO	1	0
6	B	507	EDO	1	0
6	A	615	EDO	1	0
6	A	617	EDO	4	0
6	B	509	EDO	6	0
6	A	613	EDO	3	0

The following is a two-dimensional graphical depiction of Mogul quality analysis of bond lengths, bond angles, torsion angles, and ring geometry for all instances of the Ligand of Interest. In addition, ligands with molecular weight > 250 and outliers as shown on the validation Tables will also be included. For torsion angles, if less than 5% of the Mogul distribution of torsion angles is within 10 degrees of the torsion angle in question, then that torsion angle is considered an outlier. Any bond that is central to one or more torsion angles identified as an outlier by Mogul will be highlighted in the graph. For rings, the root-mean-square deviation (RMSD) between the ring in question and similar rings identified by Mogul is calculated over all ring torsion angles. If the average RMSD is greater than 60 degrees and the minimal RMSD between the ring in question and any Mogul-identified rings is also greater than 60 degrees, then that ring is considered an outlier. The outliers are highlighted in purple. The color gray indicates Mogul did not find sufficient equivalents in the CSD to analyse the geometry.



5.7 Other polymers

There are no such residues in this entry.

5.8 Polymer linkage issues

There are no chain breaks in this entry.

6 Fit of model and data

6.1 Protein, DNA and RNA chains

In the following table, the column labelled ‘#RSRZ> 2’ contains the number (and percentage) of RSRZ outliers, followed by percent RSRZ outliers for the chain as percentile scores relative to all X-ray entries and entries of similar resolution. The OWAB column contains the minimum, median, 95th percentile and maximum values of the occupancy-weighted average B-factor per residue. The column labelled ‘Q< 0.9’ lists the number of (and percentage) of residues with an average occupancy less than 0.9.

Mol	Chain	Analysed	<RSRZ>	#RSRZ>2	OWAB(Å ²)	Q<0.9
1	A	556/557 (99%)	0.67	58 (10%) 6 7	36, 60, 125, 213	0
2	B	412/428 (96%)	1.03	73 (17%) 1 1	36, 59, 137, 199	0
All	All	968/985 (98%)	0.82	131 (13%) 3 3	36, 60, 131, 213	0

All (131) RSRZ outliers are listed below:

Mol	Chain	Res	Type	RSRZ
1	A	67	ASP	13.6
2	B	90	VAL	11.5
1	A	68	SER	9.5
2	B	230	MET	9.1
1	A	293	ILE	8.3
1	A	292	VAL	7.4
2	B	4	PRO	7.4
1	A	286	THR	7.4
2	B	229	TRP	6.8
1	A	289	LEU	6.8
2	B	228	LEU	6.8
2	B	93	GLY	6.7
2	B	67	ASP	6.7
2	B	210	LEU	6.6
2	B	231	GLY	6.6
1	A	290	THR	6.6
1	A	283	LEU	6.4
2	B	168	LEU	6.2
1	A	301	LEU	6.1
2	B	197	GLN	6.1
1	A	69	THR	6.1
1	A	285	GLY	6.1
1	A	288	ALA	6.1
1	A	254	VAL	6.1

Continued on next page...

Continued from previous page...

Mol	Chain	Res	Type	RSRZ
2	B	227	PHE	6.0
1	A	257	ILE	5.9
1	A	65	LYS	5.7
2	B	232	TYR	5.7
1	A	66	LYS	5.6
2	B	212	TRP	5.4
2	B	5	ILE	5.4
2	B	89	GLU	5.3
2	B	92	LEU	5.2
1	A	72	ARG	5.0
2	B	211	ARG	4.9
1	A	222	GLN	4.9
1	A	282	LEU	4.9
2	B	166	LYS	4.9
1	A	294	PRO	4.9
2	B	200	THR	4.9
2	B	68	SER	4.9
1	A	223	LYS	4.8
1	A	252	TRP	4.7
2	B	88	TRP	4.7
1	A	297	GLU	4.7
1	A	295	LEU	4.7
2	B	206	ARG	4.7
2	B	358	ARG	4.6
2	B	202	ILE	4.5
2	B	209	LEU	4.4
1	A	70	LYS	4.4
2	B	91	GLN	4.3
1	A	24	TRP	4.3
2	B	69	THR	4.3
2	B	208	HIS	4.3
2	B	193	LEU	4.2
1	A	260	LEU	4.2
2	B	207	GLN	4.1
1	A	246	LEU	4.1
1	A	291	GLU	4.1
2	B	173	LYS	4.0
2	B	199	ARG	3.9
2	B	165	THR	3.9
1	A	251	SER	3.9
1	A	287	LYS	3.9
2	B	356	ARG	3.8

Continued on next page...

Continued from previous page...

Mol	Chain	Res	Type	RSRZ
2	B	196	GLY	3.8
1	A	255	ASN	3.8
2	B	204	GLU	3.7
2	B	195	ILE	3.7
2	B	104	LYS	3.6
1	A	284	ARG	3.6
1	A	247	PRO	3.6
2	B	359	GLY	3.6
2	B	169	GLU	3.5
1	A	221	HIS	3.5
1	A	298	GLU	3.4
2	B	237	ASP	3.4
1	A	554	ALA	3.4
2	B	198	HIS	3.3
2	B	177	ASP	3.2
2	B	95	PRO	3.2
1	A	92	LEU	3.1
2	B	65	LYS	3.1
2	B	170	PRO	3.1
2	B	325	LEU	3.0
2	B	94	ILE	3.0
2	B	205	LEU	3.0
2	B	174	GLN	3.0
2	B	70	LYS	3.0
1	A	253	THR	3.0
2	B	203	GLU	2.9
1	A	215	THR	2.9
2	B	167	ILE	2.9
2	B	87	PHE	2.9
2	B	176	PRO	2.9
1	A	406	TRP	2.8
1	A	360	ALA	2.8
1	A	195	ILE	2.7
1	A	220	LYS	2.7
1	A	256	ASP	2.7
1	A	258	GLN	2.6
2	B	326[A]	ILE	2.6
2	B	357	MET	2.6
1	A	259	LYS	2.6
2	B	414	TRP	2.6
2	B	171	PHE	2.5
1	A	250	ASP	2.4

Continued on next page...

Continued from previous page...

Mol	Chain	Res	Type	RSRZ
1	A	261	VAL	2.4
1	A	358	ARG	2.3
2	B	60[A]	VAL	2.3
2	B	7	THR	2.3
2	B	391	LEU	2.3
2	B	201	LYS	2.2
2	B	191	SER	2.2
1	A	361	HIS	2.2
2	B	315	HIS	2.2
1	A	311	LYS	2.2
2	B	393	ILE	2.2
2	B	318	TYR	2.2
1	A	227	PHE	2.2
1	A	375	ILE	2.1
1	A	93	GLY	2.1
2	B	238	LYS	2.1
2	B	284	ARG	2.1
2	B	233	GLU	2.1
1	A	52	PRO	2.1
1	A	15	GLY	2.1
1	A	546	GLU	2.0
2	B	398	TRP	2.0
2	B	178	ILE	2.0

6.2 Non-standard residues in protein, DNA, RNA chains [i](#)

There are no non-standard protein/DNA/RNA residues in this entry.

6.3 Carbohydrates [i](#)

There are no monosaccharides in this entry.

6.4 Ligands [i](#)

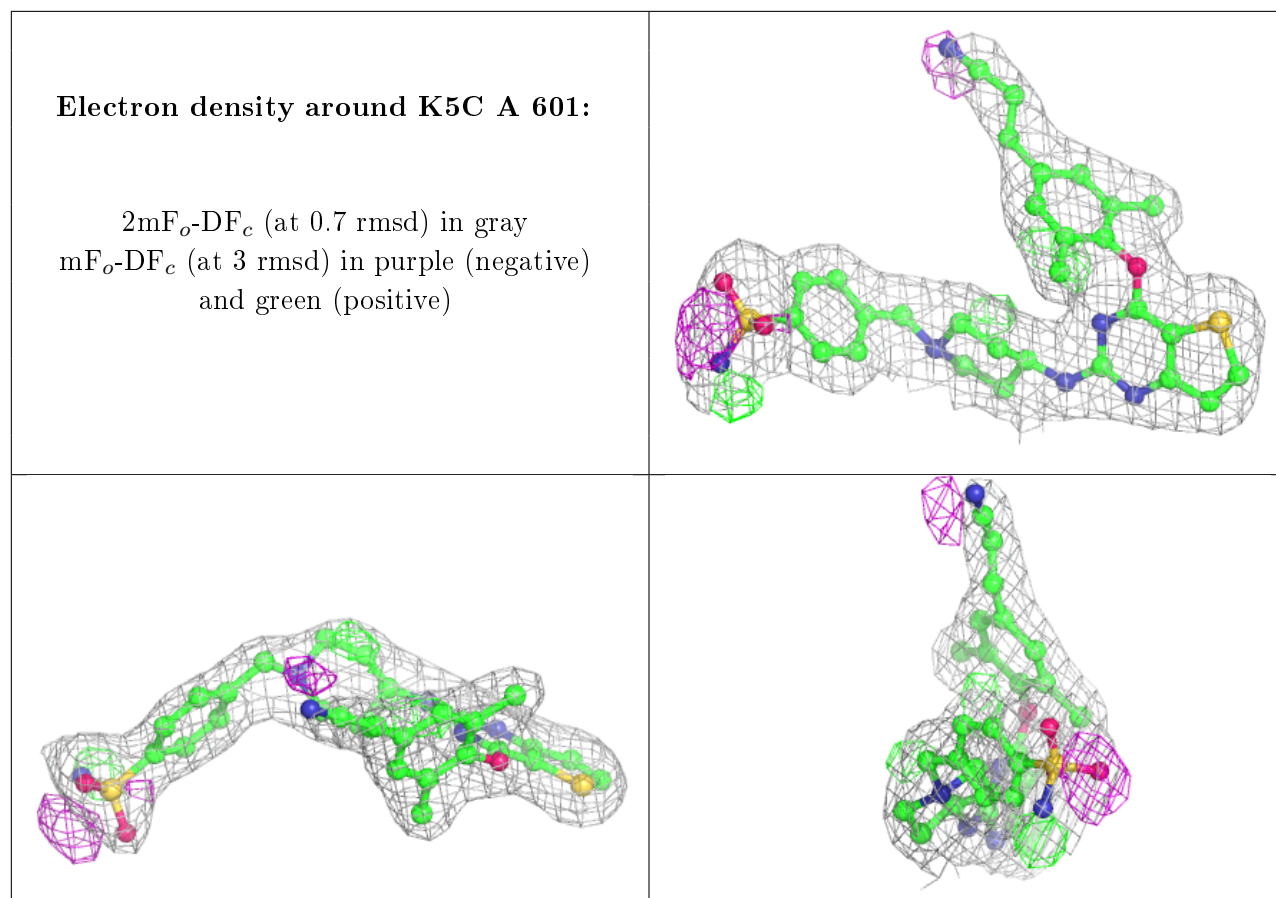
In the following table, the Atoms column lists the number of modelled atoms in the group and the number defined in the chemical component dictionary. The B-factors column lists the minimum, median, 95th percentile and maximum values of B factors of atoms in the group. The column labelled 'Q< 0.9' lists the number of atoms with occupancy less than 0.9.

Continued on next page...

Continued from previous page...

Mol	Type	Chain	Res	Atoms	RSCC	RSR	B-factors(\AA^2)	Q<0.9
4	MG	A	602	1/1	0.30	0.39	91,91,91,91	0
6	EDO	B	509	4/4	0.59	0.26	86,86,87,90	0
6	EDO	B	510[A]	4/4	0.74	0.18	66,68,69,70	4
6	EDO	B	508	4/4	0.74	0.21	78,79,81,82	0
6	EDO	B	510[B]	4/4	0.74	0.18	66,68,69,70	4
5	SO4	A	603	5/5	0.76	0.17	137,138,140,141	0
6	EDO	A	617	4/4	0.77	0.54	113,114,114,115	0
6	EDO	A	610	4/4	0.77	0.24	95,95,98,99	0
6	EDO	A	611	4/4	0.79	0.22	80,80,81,83	0
6	EDO	A	609	4/4	0.81	0.18	76,76,77,78	0
6	EDO	A	612	4/4	0.84	0.13	66,69,75,80	0
6	EDO	A	613	4/4	0.84	0.24	90,93,93,96	0
5	SO4	A	605	5/5	0.85	0.14	111,112,117,118	0
6	EDO	A	615	4/4	0.86	0.18	64,65,70,77	0
5	SO4	A	608	5/5	0.89	0.23	144,145,145,148	0
5	SO4	B	505	5/5	0.89	0.30	129,130,134,134	0
5	SO4	A	606	5/5	0.89	0.15	133,135,136,136	0
5	SO4	B	502	5/5	0.90	0.23	100,105,106,116	0
6	EDO	B	507	4/4	0.91	0.22	62,63,71,73	0
5	SO4	B	503	5/5	0.91	0.30	146,147,148,149	0
6	EDO	A	616	4/4	0.91	0.16	74,76,76,77	0
6	EDO	B	506	4/4	0.92	0.30	53,59,59,61	0
3	K5C	A	601	40/40	0.92	0.13	47,60,86,92	0
5	SO4	B	504	5/5	0.93	0.21	124,124,126,127	0
5	SO4	A	607	5/5	0.93	0.16	84,87,90,96	0
5	SO4	A	604	5/5	0.95	0.14	91,94,99,100	0
6	EDO	A	614	4/4	0.97	0.17	44,52,57,59	0
7	DMS	B	501	4/4	0.98	0.13	44,51,55,68	0

The following is a graphical depiction of the model fit to experimental electron density of all instances of the Ligand of Interest. In addition, ligands with molecular weight > 250 and outliers as shown on the geometry validation Tables will also be included. Each fit is shown from different orientation to approximate a three-dimensional view.



6.5 Other polymers ⓘ

There are no such residues in this entry.