



Full wwPDB X-ray Structure Validation Report ⓘ

Aug 21, 2020 – 01:07 AM BST

PDB ID : 6C0P
Title : Crystal structure of HIV-1 E138K mutant reverse transcriptase in complex with non-nucleoside inhibitor 25a
Authors : Yang, Y.; Nguyen, L.A.; Smithline, Z.B.; Steitz, T.A.
Deposited on : 2018-01-01
Resolution : 2.05 Å(reported)

This is a Full wwPDB X-ray Structure Validation Report for a publicly released PDB entry.

We welcome your comments at validation@mail.wwpdb.org

A user guide is available at

<https://www.wwpdb.org/validation/2017/XrayValidationReportHelp>

with specific help available everywhere you see the ⓘ symbol.

The following versions of software and data (see [references ⓘ](#)) were used in the production of this report:

MolProbity : 4.02b-467
Mogul : 1.8.5 (274361), CSD as541be (2020)
Xtriage (Phenix) : 1.13
EDS : 2.13.1
buster-report : 1.1.7 (2018)
Percentile statistics : 20191225.v01 (using entries in the PDB archive December 25th 2019)
Refmac : 5.8.0158
CCP4 : 7.0.044 (Gargrove)
Ideal geometry (proteins) : Engh & Huber (2001)
Ideal geometry (DNA, RNA) : Parkinson et al. (1996)
Validation Pipeline (wwPDB-VP) : 2.13.1

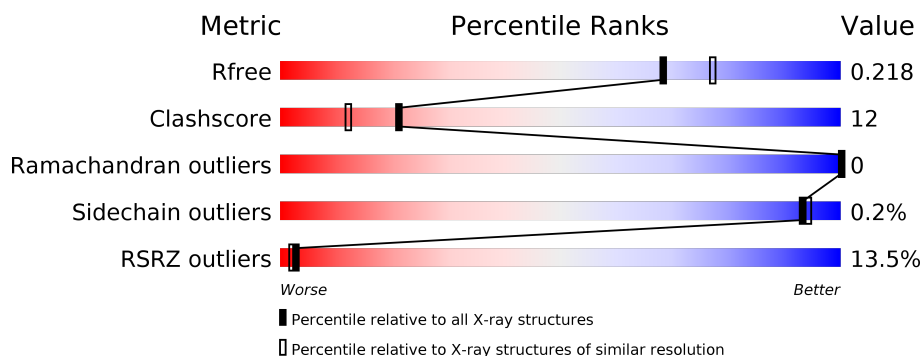
1 Overall quality at a glance

The following experimental techniques were used to determine the structure:

X-RAY DIFFRACTION

The reported resolution of this entry is 2.05 Å.

Percentile scores (ranging between 0-100) for global validation metrics of the entry are shown in the following graphic. The table shows the number of entries on which the scores are based.



Metric	Whole archive (#Entries)	Similar resolution (#Entries, resolution range(Å))
R_{free}	130704	1692 (2.04-2.04)
Clashscore	141614	1773 (2.04-2.04)
Ramachandran outliers	138981	1752 (2.04-2.04)
Sidechain outliers	138945	1752 (2.04-2.04)
RSRZ outliers	127900	1672 (2.04-2.04)

The table below summarises the geometric issues observed across the polymeric chains and their fit to the electron density. The red, orange, yellow and green segments on the lower bar indicate the fraction of residues that contain outliers for ≥ 3 , 2, 1 and 0 types of geometric quality criteria respectively. A grey segment represents the fraction of residues that are not modelled. The numeric value for each fraction is indicated below the corresponding segment, with a dot representing fractions $\leq 5\%$. The upper red bar (where present) indicates the fraction of residues that have poor fit to the electron density. The numeric value is given above the bar.

Mol	Chain	Length	Quality of chain
1	A	557	<div> <div>15%</div> <div>78%</div> <div>21%</div> </div>
2	B	428	<div> <div>11%</div> <div>75%</div> <div>21%</div> <div>.</div> </div>

The following table lists non-polymeric compounds, carbohydrate monomers and non-standard residues in protein, DNA, RNA chains that are outliers for geometric or electron-density-fit criteria:

Mol	Type	Chain	Res	Chirality	Geometry	Clashes	Electron density
4	MG	A	602	-	-	-	X
6	EDO	A	617	-	-	-	X
6	EDO	A	620	-	-	X	-
6	EDO	A	622	-	-	-	X
6	EDO	A	623	-	-	X	-
6	EDO	B	509	-	-	X	-
6	EDO	B	514	-	-	X	-

2 Entry composition

There are 8 unique types of molecules in this entry. The entry contains 8878 atoms, of which 0 are hydrogens and 0 are deuteriums.

In the tables below, the ZeroOcc column contains the number of atoms modelled with zero occupancy, the AltConf column contains the number of residues with at least one atom in alternate conformation and the Trace column contains the number of residues modelled with at most 2 atoms.

- Molecule 1 is a protein called Reverse transcriptase/ribonuclease H.

Mol	Chain	Residues	Atoms					ZeroOcc	AltConf	Trace
1	A	556	Total	C	N	O	S	0	9	0
			4593	2975	763	846	9			

There are 5 discrepancies between the modelled and reference sequences:

Chain	Residue	Modelled	Actual	Comment	Reference
A	-1	MET	-	initiating methionine	UNP P03366
A	0	VAL	-	expression tag	UNP P03366
A	172	ALA	LYS	engineered mutation	UNP P03366
A	173	ALA	LYS	engineered mutation	UNP P03366
A	280	SER	CYS	engineered mutation	UNP P03366

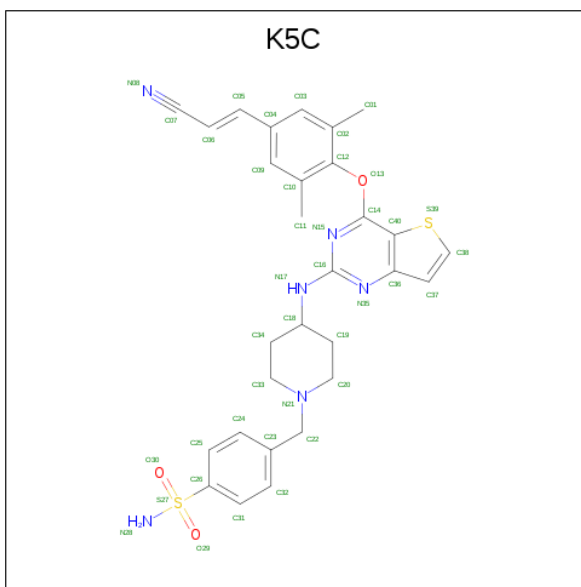
- Molecule 2 is a protein called Reverse transcriptase p51 subunit.

Mol	Chain	Residues	Atoms					ZeroOcc	AltConf	Trace
2	B	412	Total	C	N	O	S	0	6	0
			3454	2253	571	623	7			

There are 2 discrepancies between the modelled and reference sequences:

Chain	Residue	Modelled	Actual	Comment	Reference
B	138	LYS	GLU	engineered mutation	UNP P03366
B	280	SER	CYS	engineered mutation	UNP P03366

- Molecule 3 is 4-({4-[(4-{4-[(E)-2-cyanoethenyl]-2,6-dimethylphenoxy}thieno[3,2-d]pyrimidin-2-yl)amino]piperidin-1-yl}methyl)benzene-1-sulfonamide (three-letter code: K5C) (formula: C₂₉H₃₀N₆O₃S₂) (labeled as "Ligand of Interest" by author).

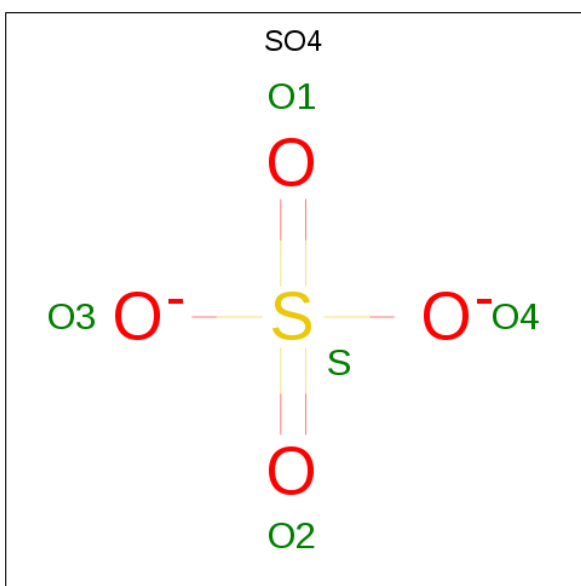


Mol	Chain	Residues	Atoms					ZeroOcc	AltConf
3	A	1	Total	C	N	O	S	0	0
			40	29	6	3	2		

- Molecule 4 is MAGNESIUM ION (three-letter code: MG) (formula: Mg).

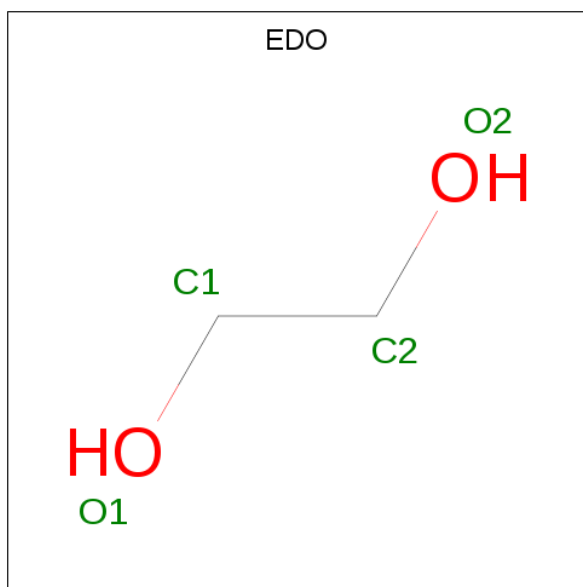
Mol	Chain	Residues	Atoms		ZeroOcc	AltConf
4	A	1	Total	Mg	0	0
			1	1		

- Molecule 5 is SULFATE ION (three-letter code: SO4) (formula: O₄S).



Mol	Chain	Residues	Atoms	ZeroOcc	AltConf
5	A	1	Total O S 5 4 1	0	0
5	A	1	Total O S 5 4 1	0	0
5	A	1	Total O S 5 4 1	0	0
5	A	1	Total O S 5 4 1	0	0
5	A	1	Total O S 5 4 1	0	0
5	A	1	Total O S 5 4 1	0	0
5	B	1	Total O S 5 4 1	0	0
5	B	1	Total O S 5 4 1	0	0
5	B	1	Total O S 5 4 1	0	0

- Molecule 6 is 1,2-ETHANEDIOL (three-letter code: EDO) (formula: C₂H₆O₂).



Mol	Chain	Residues	Atoms	ZeroOcc	AltConf
6	A	1	Total C O 4 2 2	0	0
6	A	1	Total C O 4 2 2	0	0
6	A	1	Total C O 4 2 2	0	0

Continued on next page...

Continued from previous page...

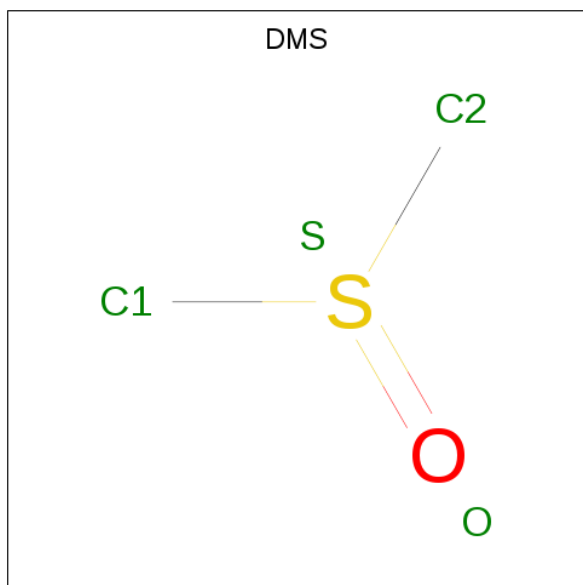
Mol	Chain	Residues	Atoms			ZeroOcc	AltConf
6	A	1	Total 4	C 2	O 2	0	0
6	A	1	Total 4	C 2	O 2	0	0
6	A	1	Total 4	C 2	O 2	0	0
6	A	1	Total 4	C 2	O 2	0	0
6	A	1	Total 4	C 2	O 2	0	0
6	A	1	Total 4	C 2	O 2	0	0
6	A	1	Total 4	C 2	O 2	0	0
6	A	1	Total 4	C 2	O 2	0	0
6	A	1	Total 4	C 2	O 2	0	0
6	A	1	Total 4	C 2	O 2	0	0
6	A	1	Total 4	C 2	O 2	0	0
6	A	1	Total 4	C 2	O 2	0	0
6	A	1	Total 4	C 2	O 2	0	0
6	A	1	Total 4	C 2	O 2	0	0
6	B	1	Total 4	C 2	O 2	0	0
6	B	1	Total 4	C 2	O 2	0	0
6	B	1	Total 4	C 2	O 2	0	0
6	B	1	Total 4	C 2	O 2	0	0
6	B	1	Total 4	C 2	O 2	0	0
6	B	1	Total 4	C 2	O 2	0	0
6	B	1	Total 4	C 2	O 2	0	0
6	B	1	Total 4	C 2	O 2	0	0

Continued on next page...

Continued from previous page...

Mol	Chain	Residues	Atoms			ZeroOcc	AltConf
6	B	1	Total	C	O	0	0
			4	2	2		
6	B	1	Total	C	O	0	0
			4	2	2		
6	B	1	Total	C	O	0	0
			4	2	2		

- Molecule 7 is DIMETHYL SULFOXIDE (three-letter code: DMS) (formula: C₂H₆OS).



Mol	Chain	Residues	Atoms				ZeroOcc	AltConf
7	B	1	Total	C	O	S	0	0
			4	2	1	1		

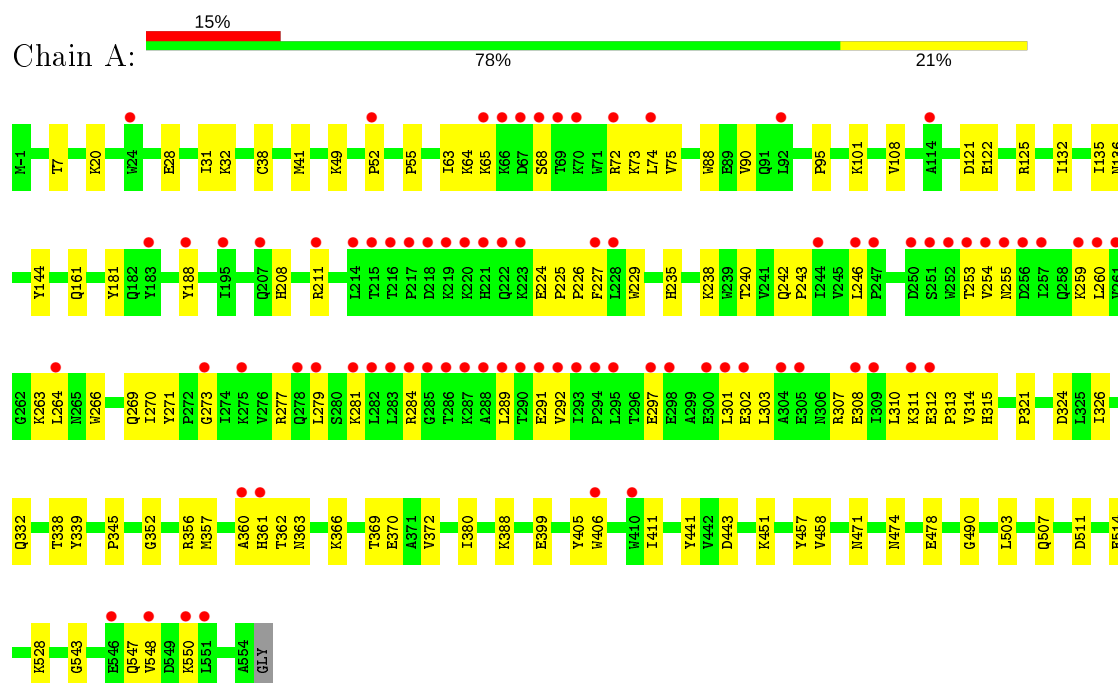
- Molecule 8 is water.

Mol	Chain	Residues	Atoms		ZeroOcc	AltConf
8	A	365	Total	O	0	0
			365	365		
8	B	268	Total	O	0	0
			268	268		

3 Residue-property plots

These plots are drawn for all protein, RNA, DNA and oligosaccharide chains in the entry. The first graphic for a chain summarises the proportions of the various outlier classes displayed in the second graphic. The second graphic shows the sequence view annotated by issues in geometry and electron density. Residues are color-coded according to the number of geometric quality criteria for which they contain at least one outlier: green = 0, yellow = 1, orange = 2 and red = 3 or more. A red dot above a residue indicates a poor fit to the electron density ($RSRZ > 2$). Stretches of 2 or more consecutive residues without any outlier are shown as a green connector. Residues present in the sample, but not in the model, are shown in grey.

• Molecule 1: Reverse transcriptase/ribonuclease H



• Molecule 2: Reverse transcriptase p51 subunit



4 Data and refinement statistics

Property	Value	Source
Space group	C 1 2 1	Depositor
Cell constants a, b, c, α , β , γ	162.83Å 73.19Å 109.31Å 90.00° 100.19° 90.00°	Depositor
Resolution (Å)	48.84 – 2.05 48.84 – 2.05	Depositor EDS
% Data completeness (in resolution range)	96.1 (48.84-2.05) 96.2 (48.84-2.05)	Depositor EDS
R_{merge}	0.04	Depositor
R_{sym}	(Not available)	Depositor
$\langle I/\sigma(I) \rangle$ ¹	0.99 (at 2.05Å)	Xtriage
Refinement program	PHENIX (1.12_2829)	Depositor
R, R_{free}	0.180 , 0.215 0.181 , 0.218	Depositor DCC
R_{free} test set	3828 reflections (5.00%)	wwPDB-VP
Wilson B-factor (Å ²)	62.8	Xtriage
Anisotropy	0.078	Xtriage
Bulk solvent k_{sol} (e/Å ³), B_{sol} (Å ²)	0.31 , 71.5	EDS
L-test for twinning ²	$\langle L \rangle = 0.50$, $\langle L^2 \rangle = 0.33$	Xtriage
Estimated twinning fraction	No twinning to report.	Xtriage
F_o, F_c correlation	0.97	EDS
Total number of atoms	8878	wwPDB-VP
Average B, all atoms (Å ²)	84.0	wwPDB-VP

Xtriage's analysis on translational NCS is as follows: *The largest off-origin peak in the Patterson function is 4.72% of the height of the origin peak. No significant pseudotranslation is detected.*

¹Intensities estimated from amplitudes.

²Theoretical values of $\langle |L| \rangle$, $\langle L^2 \rangle$ for acentric reflections are 0.5, 0.333 respectively for untwinned datasets, and 0.375, 0.2 for perfectly twinned datasets.

5 Model quality

5.1 Standard geometry

Bond lengths and bond angles in the following residue types are not validated in this section: MG, DMS, K5C, EDO, SO4

The Z score for a bond length (or angle) is the number of standard deviations the observed value is removed from the expected value. A bond length (or angle) with $|Z| > 5$ is considered an outlier worth inspection. RMSZ is the root-mean-square of all Z scores of the bond lengths (or angles).

Mol	Chain	Bond lengths		Bond angles	
		RMSZ	# Z >5	RMSZ	# Z >5
1	A	0.29	0/4714	0.45	0/6409
2	B	0.30	0/3553	0.46	0/4824
All	All	0.29	0/8267	0.46	0/11233

There are no bond length outliers.

There are no bond angle outliers.

There are no chirality outliers.

There are no planarity outliers.

5.2 Too-close contacts

In the following table, the Non-H and H(model) columns list the number of non-hydrogen atoms and hydrogen atoms in the chain respectively. The H(added) column lists the number of hydrogen atoms added and optimized by MolProbity. The Clashes column lists the number of clashes within the asymmetric unit, whereas Symm-Clashes lists symmetry related clashes.

Mol	Chain	Non-H	H(model)	H(added)	Clashes	Symm-Clashes
1	A	4593	0	4648	116	0
2	B	3454	0	3488	84	0
3	A	40	0	0	3	0
4	A	1	0	0	0	0
5	A	30	0	0	0	0
5	B	15	0	0	0	0
6	A	64	0	96	22	0
6	B	44	0	66	14	0
7	B	4	0	6	3	0
8	A	365	0	0	14	0
8	B	268	0	0	8	0
All	All	8878	0	8304	201	0

The all-atom clashscore is defined as the number of clashes found per 1000 atoms (including hydrogen atoms). The all-atom clashscore for this structure is 12.

All (201) close contacts within the same asymmetric unit are listed below, sorted by their clash magnitude.

Atom-1	Atom-2	Interatomic distance (Å)	Clash overlap (Å)
1:A:181:TYR:HA	6:A:622:EDO:H22	1.37	1.06
1:A:388:LYS:HG3	6:A:620:EDO:H21	1.43	0.96
1:A:65:LYS:HB2	1:A:68:SER:HB2	1.51	0.92
2:B:110:ASP:HB3	2:B:228:LEU:HD23	1.51	0.89
2:B:23:GLN:HB3	6:B:514:EDO:H22	1.53	0.89
2:B:201:LYS:HA	2:B:204:GLU:HB3	1.58	0.85
2:B:66:LYS:HE2	2:B:358:ARG:HH22	1.42	0.83
1:A:28:GLU:HG3	1:A:135:ILE:HD12	1.64	0.79
1:A:332:GLN:NE2	1:A:338[A]:THR:HG23	1.97	0.79
1:A:63:ILE:HB	1:A:72:ARG:HD3	1.63	0.79
1:A:242:GLN:HB3	1:A:243:PRO:HD2	1.65	0.79
1:A:478:GLU:HG2	8:A:933:HOH:O	1.87	0.73
1:A:255:ASN:HB2	1:A:289:LEU:HB3	1.73	0.71
2:B:360:ALA:HB2	2:B:366:LYS:HD3	1.73	0.70
1:A:388:LYS:HG3	6:A:620:EDO:C2	2.21	0.69
1:A:543:GLY:HA3	2:B:283:LEU:O	1.93	0.69
2:B:104:LYS:HA	2:B:237:ASP:OD1	1.94	0.68
1:A:253:THR:HG22	1:A:292:VAL:HG22	1.74	0.68
1:A:277:ARG:HH22	6:A:624:EDO:H22	1.58	0.68
2:B:107:THR:HA	2:B:232:TYR:O	1.94	0.67
1:A:326[B]:ILE:HD13	1:A:388:LYS:HB2	1.76	0.67
1:A:246:LEU:HD22	1:A:260:LEU:HD11	1.76	0.66
1:A:253:THR:HA	1:A:292:VAL:HA	1.78	0.65
1:A:101:LYS:HD3	1:A:321:PRO:CG	2.26	0.65
2:B:354:TYR:CB	2:B:357:MET:HE2	2.27	0.65
6:A:622:EDO:H12	2:B:140:PRO:HD3	1.79	0.64
2:B:353:LYS:H	6:B:509:EDO:H11	1.62	0.64
1:A:246:LEU:HD22	1:A:260:LEU:CD1	2.28	0.63
1:A:281:LYS:HE3	1:A:284:ARG:NH2	2.14	0.63
2:B:108:VAL:HB	2:B:232:TYR:HB3	1.78	0.63
1:A:254:VAL:N	1:A:291:GLU:O	2.32	0.63
2:B:296:THR:O	2:B:300:GLU:HG3	1.98	0.63
2:B:354:TYR:HB3	2:B:357:MET:HE2	1.81	0.62
1:A:161:GLN:HG2	8:A:782:HOH:O	1.98	0.62
1:A:63:ILE:HB	1:A:72:ARG:CD	2.29	0.62
2:B:60[B]:VAL:HG12	2:B:75:VAL:HG22	1.82	0.62
2:B:178:ILE:HD11	2:B:201:LYS:CD	2.30	0.61

Continued on next page...

Continued from previous page...

Atom-1	Atom-2	Interatomic distance (Å)	Clash overlap (Å)
1:A:406:TRP:N	6:A:617:EDO:H12	2.16	0.61
2:B:165:THR:O	2:B:169:GLU:HG2	2.01	0.61
6:A:611:EDO:H22	8:A:1027:HOH:O	2.01	0.61
1:A:73:LYS:NZ	1:A:75:VAL:HG23	2.16	0.60
1:A:260:LEU:HD21	1:A:303:LEU:HD13	1.82	0.60
1:A:227:PHE:HB3	3:A:601:K5C:N08	2.16	0.60
1:A:31:ILE:HD12	6:A:623:EDO:H12	1.82	0.60
1:A:63:ILE:HG22	1:A:64:LYS:H	1.67	0.60
2:B:69:THR:HA	8:B:739:HOH:O	2.01	0.60
2:B:66:LYS:HE3	6:B:510:EDO:H12	1.84	0.60
2:B:91:GLN:HG3	2:B:92:LEU:H	1.67	0.60
2:B:336:GLN:HA	2:B:354:TYR:O	2.02	0.59
2:B:82:LYS:HA	8:B:680:HOH:O	2.03	0.59
2:B:281:LYS:O	2:B:284:ARG:HG2	2.03	0.59
1:A:254:VAL:HG23	1:A:291:GLU:O	2.02	0.59
1:A:308:GLU:O	1:A:311:LYS:HG2	2.02	0.59
1:A:63:ILE:HB	1:A:72:ARG:CG	2.33	0.59
2:B:304:ALA:O	2:B:308:GLU:HG2	2.02	0.58
1:A:297:GLU:O	1:A:301:LEU:HD13	2.03	0.58
1:A:388:LYS:HE3	6:A:620:EDO:C2	2.34	0.58
1:A:208:HIS:O	1:A:211:ARG:HG2	2.04	0.58
1:A:88:TRP:CZ2	6:B:514:EDO:H12	2.38	0.58
1:A:547:GLN:O	1:A:550:LYS:HG2	2.04	0.58
2:B:205:LEU:O	2:B:209:LEU:HG	2.04	0.57
1:A:307:ARG:HB2	8:A:731:HOH:O	2.05	0.57
2:B:386:THR:OG1	6:B:507:EDO:H12	2.04	0.57
6:B:509:EDO:H22	8:B:661:HOH:O	2.04	0.57
1:A:108:VAL:HG22	1:A:188:TYR:CD2	2.40	0.57
2:B:66:LYS:HE2	2:B:358:ARG:NH2	2.15	0.57
6:A:619:EDO:H12	2:B:400:THR:O	2.06	0.56
1:A:281:LYS:HE3	1:A:284:ARG:HH21	1.69	0.56
1:A:372:VAL:HG11	1:A:411[A]:ILE:HG23	1.87	0.56
1:A:259:LYS:NZ	1:A:263:LYS:HE3	2.20	0.56
1:A:246:LEU:HD11	1:A:310:LEU:HD12	1.88	0.56
1:A:135:ILE:HA	6:A:623:EDO:O1	2.06	0.55
2:B:353:LYS:H	6:B:509:EDO:C1	2.19	0.55
1:A:315[B]:HIS:HE1	8:A:834:HOH:O	1.89	0.55
2:B:110:ASP:HB3	2:B:228:LEU:CD2	2.30	0.55
2:B:298:GLU:N	2:B:298:GLU:OE1	2.39	0.55
1:A:345:PRO:HA	8:A:855:HOH:O	2.05	0.54
1:A:458:VAL:HB	8:A:945:HOH:O	2.06	0.54

Continued on next page...

Continued from previous page...

Atom-1	Atom-2	Interatomic distance (Å)	Clash overlap (Å)
1:A:229:TRP:HB2	3:A:601:K5C:N08	2.23	0.54
1:A:88:TRP:CH2	6:B:514:EDO:H12	2.43	0.54
1:A:20[B]:LYS:HZ1	1:A:55:PRO:HB2	1.73	0.54
1:A:20[B]:LYS:NZ	1:A:55:PRO:HB2	2.22	0.54
2:B:206:ARG:NH1	2:B:229:TRP:HA	2.24	0.53
1:A:242:GLN:HB2	8:A:941:HOH:O	2.07	0.53
1:A:281:LYS:O	1:A:284:ARG:HG3	2.09	0.53
2:B:58:THR:HG23	2:B:76:ASP:O	2.08	0.53
2:B:66:LYS:HE3	6:B:510:EDO:C1	2.38	0.53
1:A:277:ARG:HH22	6:A:624:EDO:C2	2.22	0.53
2:B:91:GLN:HG3	2:B:92:LEU:N	2.23	0.53
2:B:353:LYS:O	6:B:509:EDO:H12	2.08	0.52
1:A:388:LYS:HE3	6:A:620:EDO:H22	1.92	0.52
2:B:319:TYR:OH	2:B:385:LYS:HE2	2.10	0.52
1:A:266:TRP:O	1:A:269:GLN:HG2	2.09	0.52
1:A:388:LYS:CG	6:A:620:EDO:H21	2.29	0.52
1:A:38:CYS:SG	1:A:132:ILE:HD11	2.50	0.52
1:A:451:LYS:HB3	1:A:471:ASN:HA	1.92	0.52
2:B:195:ILE:HG22	2:B:199:ARG:HE	1.75	0.52
1:A:63:ILE:C	1:A:72:ARG:HG2	2.31	0.51
2:B:374:LYS:HD3	8:B:631:HOH:O	2.09	0.51
2:B:108:VAL:HG22	2:B:188:TYR:CD2	2.44	0.51
2:B:24:TRP:CD2	6:B:508:EDO:H12	2.45	0.51
2:B:362:THR:HG22	8:B:807:HOH:O	2.11	0.51
1:A:279:LEU:HG	1:A:302:GLU:OE1	2.11	0.51
1:A:311:LYS:HG3	1:A:312:GLU:N	2.25	0.51
1:A:90:VAL:O	1:A:90:VAL:HG22	2.11	0.51
2:B:228:LEU:O	2:B:229:TRP:HB3	2.11	0.51
2:B:201:LYS:CA	2:B:204:GLU:HB3	2.37	0.51
1:A:52:PRO:HA	8:A:737:HOH:O	2.10	0.50
2:B:399:GLU:HG2	8:B:754:HOH:O	2.10	0.50
1:A:63:ILE:HG22	1:A:64:LYS:N	2.26	0.50
2:B:66:LYS:NZ	2:B:232:TYR:HE1	2.09	0.50
2:B:8:VAL:HG11	2:B:89:GLU:OE2	2.12	0.50
1:A:356:ARG:HG2	1:A:357:MET:O	2.12	0.50
1:A:366:LYS:HE2	1:A:405:TYR:OH	2.12	0.50
1:A:255:ASN:N	1:A:289:LEU:O	2.44	0.49
2:B:208:HIS:O	2:B:212:TRP:HD1	1.95	0.49
1:A:73:LYS:HZ2	1:A:75:VAL:HG23	1.77	0.49
1:A:63:ILE:CB	1:A:72:ARG:HD3	2.38	0.49
1:A:528:LYS:HD3	6:A:615:EDO:H22	1.94	0.49

Continued on next page...

Continued from previous page...

Atom-1	Atom-2	Interatomic distance (Å)	Clash overlap (Å)
2:B:350:LYS:HE3	2:B:378:GLU:OE1	2.11	0.49
1:A:224:GLU:HB3	1:A:225:PRO:HD2	1.94	0.49
8:A:916:HOH:O	2:B:394:GLN:HG3	2.12	0.49
2:B:191:SER:HB2	2:B:193:LEU:HG	1.95	0.49
1:A:136:ASN:H	6:A:623:EDO:H21	1.78	0.48
2:B:183:TYR:CD2	2:B:380:ILE:HD13	2.49	0.48
2:B:66:LYS:HZ2	2:B:232:TYR:HE1	1.60	0.48
1:A:369:THR:HG23	1:A:411[A]:ILE:HD11	1.94	0.48
1:A:181:TYR:CD1	6:A:622:EDO:H21	2.49	0.48
1:A:474:ASN:O	1:A:478:GLU:HG3	2.14	0.48
1:A:507:GLN:HG2	8:A:780:HOH:O	2.12	0.48
2:B:360:ALA:HB2	2:B:366:LYS:CD	2.44	0.48
1:A:366:LYS:O	1:A:370:GLU:HG3	2.13	0.48
2:B:91:GLN:HA	2:B:91:GLN:OE1	2.12	0.48
1:A:314[B]:VAL:HG22	1:A:315[B]:HIS:N	2.29	0.47
1:A:28:GLU:O	1:A:32:LYS:HG2	2.14	0.47
2:B:50:ILE:HG21	2:B:145:GLN:HB3	1.96	0.47
1:A:490:GLY:HA2	6:A:611:EDO:H12	1.95	0.47
2:B:195:ILE:HG21	2:B:199:ARG:HH21	1.78	0.47
2:B:357:MET:HB2	2:B:367:GLN:HG2	1.97	0.47
1:A:503:LEU:HD23	2:B:422:LEU:HD13	1.97	0.47
1:A:229:TRP:HB2	3:A:601:K5C:C07	2.45	0.47
1:A:260:LEU:O	1:A:264:LEU:HG	2.15	0.47
7:B:501:DMS:H11	8:B:779:HOH:O	2.14	0.46
2:B:229:TRP:CG	2:B:229:TRP:O	2.68	0.46
1:A:372:VAL:HG11	1:A:411[A]:ILE:HD12	1.98	0.46
1:A:528:LYS:NZ	6:A:615:EDO:H11	2.31	0.46
1:A:90:VAL:HG23	8:A:790:HOH:O	2.15	0.46
2:B:8:VAL:O	2:B:10:VAL:HG23	2.16	0.46
1:A:360:ALA:HA	1:A:514:GLU:HG3	1.98	0.45
2:B:423:VAL:HA	2:B:426:TRP:CD1	2.52	0.45
1:A:271:TYR:OH	1:A:313:PRO:HA	2.16	0.45
2:B:201:LYS:O	2:B:205:LEU:N	2.49	0.45
2:B:23:GLN:H	6:B:514:EDO:C2	2.30	0.45
2:B:163:SER:O	2:B:167:ILE:HG13	2.16	0.45
1:A:363:ASN:HA	1:A:511:ASP:OD1	2.17	0.45
1:A:273:GLY:HA2	1:A:338[A]:THR:HG21	1.99	0.45
1:A:41:MET:SD	1:A:73:LYS:HE2	2.57	0.44
1:A:101:LYS:HD3	1:A:321:PRO:CD	2.47	0.44
1:A:63:ILE:O	1:A:72:ARG:HG2	2.17	0.44
2:B:143:ARG:HG3	6:B:512:EDO:H11	1.99	0.44

Continued on next page...

Continued from previous page...

Atom-1	Atom-2	Interatomic distance (Å)	Clash overlap (Å)
2:B:236:PRO:HA	2:B:239:TRP:CE2	2.52	0.44
1:A:380:ILE:CD1	7:B:501:DMS:H22	2.47	0.44
2:B:189:VAL:HG21	2:B:205:LEU:HD23	2.00	0.44
2:B:151:GLN:HB3	2:B:185:ASP:OD2	2.16	0.44
2:B:233:GLU:HG2	2:B:233:GLU:O	2.18	0.44
2:B:23:GLN:CB	6:B:514:EDO:H22	2.38	0.44
1:A:7:THR:HG21	1:A:121:ASP:HA	1.98	0.44
1:A:332:GLN:HE22	1:A:338[A]:THR:HG23	1.81	0.44
1:A:240:THR:HB	1:A:315[A]:HIS:ND1	2.33	0.43
1:A:332:GLN:CD	1:A:338[A]:THR:HG23	2.38	0.43
2:B:240:THR:O	2:B:350:LYS:HG3	2.17	0.43
1:A:339:TYR:CZ	1:A:352:GLY:HA3	2.53	0.43
2:B:191:SER:CB	2:B:193:LEU:HG	2.48	0.43
1:A:259:LYS:HZ2	1:A:263:LYS:HE3	1.83	0.43
2:B:203:GLU:OE1	2:B:206:ARG:HD2	2.19	0.43
1:A:95:PRO:HA	2:B:136:ASN:O	2.18	0.43
1:A:270:ILE:HG13	1:A:314[A]:VAL:HG23	2.01	0.43
2:B:233:GLU:CD	2:B:233:GLU:H	2.21	0.42
1:A:74:LEU:C	1:A:74:LEU:HD23	2.39	0.42
1:A:136:ASN:H	6:A:623:EDO:C2	2.32	0.42
1:A:361:HIS:O	1:A:362:THR:HB	2.20	0.42
7:B:501:DMS:H12	8:B:607:HOH:O	2.20	0.42
1:A:443:ASP:HB2	1:A:548:VAL:HG13	2.01	0.42
2:B:91:GLN:CG	2:B:92:LEU:H	2.30	0.42
1:A:122:GLU:HG3	8:A:939:HOH:O	2.19	0.42
1:A:246:LEU:CD1	1:A:310:LEU:HD12	2.50	0.42
2:B:65:LYS:HD2	2:B:230:MET:SD	2.60	0.42
2:B:24:TRP:HB2	2:B:25:PRO:HD2	2.00	0.42
1:A:101:LYS:HD3	1:A:321:PRO:HG2	2.01	0.42
1:A:238:LYS:NZ	8:A:735:HOH:O	2.53	0.42
1:A:474:ASN:HB2	6:A:612:EDO:H11	2.01	0.42
2:B:13:LYS:HE3	2:B:84:THR:O	2.18	0.42
2:B:101:LYS:O	2:B:236:PRO:HB2	2.19	0.41
1:A:324:ASP:OD1	6:A:620:EDO:H11	2.20	0.41
1:A:49:LYS:HG2	1:A:144:TYR:CE1	2.55	0.41
2:B:317:VAL:CG1	2:B:349:LEU:HD23	2.50	0.41
2:B:195:ILE:O	2:B:199:ARG:HG3	2.20	0.41
1:A:226:PRO:HG3	1:A:235:HIS:CE1	2.55	0.41
1:A:441:TYR:O	1:A:457:TYR:HA	2.22	0.40
2:B:236:PRO:HA	2:B:239:TRP:CD2	2.57	0.40
1:A:122:GLU:HA	1:A:125:ARG:HG3	2.03	0.40

There are no symmetry-related clashes.

5.3 Torsion angles [i](#)

5.3.1 Protein backbone [i](#)

In the following table, the Percentiles column shows the percent Ramachandran outliers of the chain as a percentile score with respect to all X-ray entries followed by that with respect to entries of similar resolution.

The Analysed column shows the number of residues for which the backbone conformation was analysed, and the total number of residues.

Mol	Chain	Analysed	Favoured	Allowed	Outliers	Percentiles	
1	A	563/557 (101%)	544 (97%)	19 (3%)	0	100	100
2	B	414/428 (97%)	398 (96%)	16 (4%)	0	100	100
All	All	977/985 (99%)	942 (96%)	35 (4%)	0	100	100

There are no Ramachandran outliers to report.

5.3.2 Protein sidechains [i](#)

In the following table, the Percentiles column shows the percent sidechain outliers of the chain as a percentile score with respect to all X-ray entries followed by that with respect to entries of similar resolution.

The Analysed column shows the number of residues for which the sidechain conformation was analysed, and the total number of residues.

Mol	Chain	Analysed	Rotameric	Outliers	Percentiles	
1	A	504/495 (102%)	503 (100%)	1 (0%)	93	94
2	B	379/390 (97%)	378 (100%)	1 (0%)	92	93
All	All	883/885 (100%)	881 (100%)	2 (0%)	93	94

All (2) residues with a non-rotameric sidechain are listed below:

Mol	Chain	Res	Type
1	A	399	GLU
2	B	238	LYS

Some sidechains can be flipped to improve hydrogen bonding and reduce clashes. There are no such sidechains identified.

5.3.3 RNA ⓘ

There are no RNA molecules in this entry.

5.4 Non-standard residues in protein, DNA, RNA chains ⓘ

There are no non-standard protein/DNA/RNA residues in this entry.

5.5 Carbohydrates ⓘ

There are no monosaccharides in this entry.

5.6 Ligand geometry ⓘ

Of 39 ligands modelled in this entry, 1 is monoatomic - leaving 38 for Mogul analysis.

In the following table, the Counts columns list the number of bonds (or angles) for which Mogul statistics could be retrieved, the number of bonds (or angles) that are observed in the model and the number of bonds (or angles) that are defined in the Chemical Component Dictionary. The Link column lists molecule types, if any, to which the group is linked. The Z score for a bond length (or angle) is the number of standard deviations the observed value is removed from the expected value. A bond length (or angle) with $|Z| > 2$ is considered an outlier worth inspection. RMSZ is the root-mean-square of all Z scores of the bond lengths (or angles).

Mol	Type	Chain	Res	Link	Bond lengths			Bond angles		
					Counts	RMSZ	$\# Z > 2$	Counts	RMSZ	$\# Z > 2$
5	SO4	B	502	-	4,4,4	0.15	0	6,6,6	0.07	0
6	EDO	A	617	-	3,3,3	0.48	0	2,2,2	0.28	0
6	EDO	B	507	-	3,3,3	0.51	0	2,2,2	0.24	0
6	EDO	B	509	-	3,3,3	0.47	0	2,2,2	0.29	0
6	EDO	B	506	-	3,3,3	0.45	0	2,2,2	0.39	0
6	EDO	A	615	-	3,3,3	0.46	0	2,2,2	0.35	0
6	EDO	A	618	-	3,3,3	0.51	0	2,2,2	0.17	0
6	EDO	A	616	-	3,3,3	0.45	0	2,2,2	0.32	0
6	EDO	A	620	-	3,3,3	0.43	0	2,2,2	0.28	0
5	SO4	A	608	-	4,4,4	0.15	0	6,6,6	0.05	0
5	SO4	A	607	-	4,4,4	0.13	0	6,6,6	0.10	0
6	EDO	B	513	-	3,3,3	0.42	0	2,2,2	0.39	0
5	SO4	B	503	-	4,4,4	0.15	0	6,6,6	0.08	0
6	EDO	A	610	-	3,3,3	0.48	0	2,2,2	0.25	0
6	EDO	A	622	-	3,3,3	0.45	0	2,2,2	0.32	0
7	DMS	B	501	-	3,3,3	0.64	0	3,3,3	0.74	0
6	EDO	B	512	-	3,3,3	0.45	0	2,2,2	0.34	0
6	EDO	A	612	-	3,3,3	0.45	0	2,2,2	0.38	0

Mol	Type	Chain	Res	Link	Bond lengths			Bond angles		
					Counts	RMSZ	# Z > 2	Counts	RMSZ	# Z > 2
5	SO4	A	606	-	4,4,4	0.14	0	6,6,6	0.08	0
6	EDO	B	514	-	3,3,3	0.42	0	2,2,2	0.45	0
6	EDO	A	623	-	3,3,3	0.42	0	2,2,2	0.42	0
6	EDO	B	515	-	3,3,3	0.44	0	2,2,2	0.32	0
6	EDO	B	510	-	3,3,3	0.46	0	2,2,2	0.34	0
6	EDO	A	613	-	3,3,3	0.47	0	2,2,2	0.31	0
6	EDO	B	511	-	3,3,3	0.45	0	2,2,2	0.36	0
6	EDO	A	614	-	3,3,3	0.47	0	2,2,2	0.38	0
6	EDO	A	624	-	3,3,3	0.43	0	2,2,2	0.44	0
6	EDO	A	621	-	3,3,3	0.43	0	2,2,2	0.44	0
5	SO4	A	604	-	4,4,4	0.14	0	6,6,6	0.07	0
6	EDO	A	609	-	3,3,3	0.45	0	2,2,2	0.38	0
6	EDO	A	619	-	3,3,3	0.43	0	2,2,2	0.44	0
5	SO4	A	603	-	4,4,4	0.17	0	6,6,6	0.05	0
5	SO4	B	504	-	4,4,4	0.14	0	6,6,6	0.06	0
5	SO4	A	605	-	4,4,4	0.14	0	6,6,6	0.08	0
6	EDO	A	611	-	3,3,3	0.46	0	2,2,2	0.42	0
6	EDO	B	508	-	3,3,3	0.43	0	2,2,2	0.42	0
6	EDO	B	505	-	3,3,3	0.54	0	2,2,2	0.02	0
3	K5C	A	601	-	42,44,44	1.35	3 (7%)	51,63,63	2.16	14 (27%)

In the following table, the Chirals column lists the number of chiral outliers, the number of chiral centers analysed, the number of these observed in the model and the number defined in the Chemical Component Dictionary. Similar counts are reported in the Torsion and Rings columns. '-' means no outliers of that kind were identified.

Mol	Type	Chain	Res	Link	Chirals	Torsions	Rings
6	EDO	A	617	-	-	0/1/1/1	-
6	EDO	B	507	-	-	0/1/1/1	-
6	EDO	B	509	-	-	0/1/1/1	-
6	EDO	B	506	-	-	0/1/1/1	-
6	EDO	A	615	-	-	0/1/1/1	-
6	EDO	A	618	-	-	0/1/1/1	-
6	EDO	A	616	-	-	0/1/1/1	-
6	EDO	A	620	-	-	0/1/1/1	-
6	EDO	B	513	-	-	0/1/1/1	-
6	EDO	A	614	-	-	0/1/1/1	-
6	EDO	A	610	-	-	0/1/1/1	-
6	EDO	A	622	-	-	0/1/1/1	-
6	EDO	B	512	-	-	0/1/1/1	-
6	EDO	A	612	-	-	0/1/1/1	-
6	EDO	B	514	-	-	0/1/1/1	-

Continued on next page...

Continued from previous page...

Mol	Type	Chain	Res	Link	Chirals	Torsions	Rings
6	EDO	A	623	-	-	1/1/1/1	-
6	EDO	B	515	-	-	0/1/1/1	-
6	EDO	B	510	-	-	0/1/1/1	-
6	EDO	A	613	-	-	0/1/1/1	-
6	EDO	B	511	-	-	0/1/1/1	-
6	EDO	A	624	-	-	1/1/1/1	-
6	EDO	A	621	-	-	0/1/1/1	-
6	EDO	A	609	-	-	0/1/1/1	-
6	EDO	A	619	-	-	0/1/1/1	-
6	EDO	A	611	-	-	0/1/1/1	-
6	EDO	B	508	-	-	1/1/1/1	-
6	EDO	B	505	-	-	0/1/1/1	-
3	K5C	A	601	-	-	4/21/32/32	0/5/5/5

All (3) bond length outliers are listed below:

Mol	Chain	Res	Type	Atoms	Z	Observed(Å)	Ideal(Å)
3	A	601	K5C	C16-N17	3.98	1.39	1.34
3	A	601	K5C	C20-N21	3.18	1.55	1.46
3	A	601	K5C	S27-N28	3.18	1.66	1.60

All (14) bond angle outliers are listed below:

Mol	Chain	Res	Type	Atoms	Z	Observed(°)	Ideal(°)
3	A	601	K5C	C31-C26-C25	-5.86	112.27	120.44
3	A	601	K5C	C32-C31-C26	5.38	125.01	119.45
3	A	601	K5C	C24-C25-C26	5.02	124.64	119.45
3	A	601	K5C	C22-N21-C20	-4.72	100.55	111.06
3	A	601	K5C	C16-N17-C18	4.06	131.17	124.31
3	A	601	K5C	C31-C26-S27	3.92	125.43	119.73
3	A	601	K5C	O29-S27-C26	3.12	110.83	107.35
3	A	601	K5C	O13-C14-C40	3.03	120.62	115.69
3	A	601	K5C	O30-S27-O29	-2.93	113.95	118.76
3	A	601	K5C	C22-C23-C32	2.83	126.08	120.77
3	A	601	K5C	C09-C04-C03	-2.68	115.48	119.12
3	A	601	K5C	C01-C02-C03	2.60	124.30	119.49
3	A	601	K5C	C33-N21-C20	2.59	114.66	108.83
3	A	601	K5C	O13-C12-C02	2.21	123.17	118.35

There are no chirality outliers.

All (7) torsion outliers are listed below:

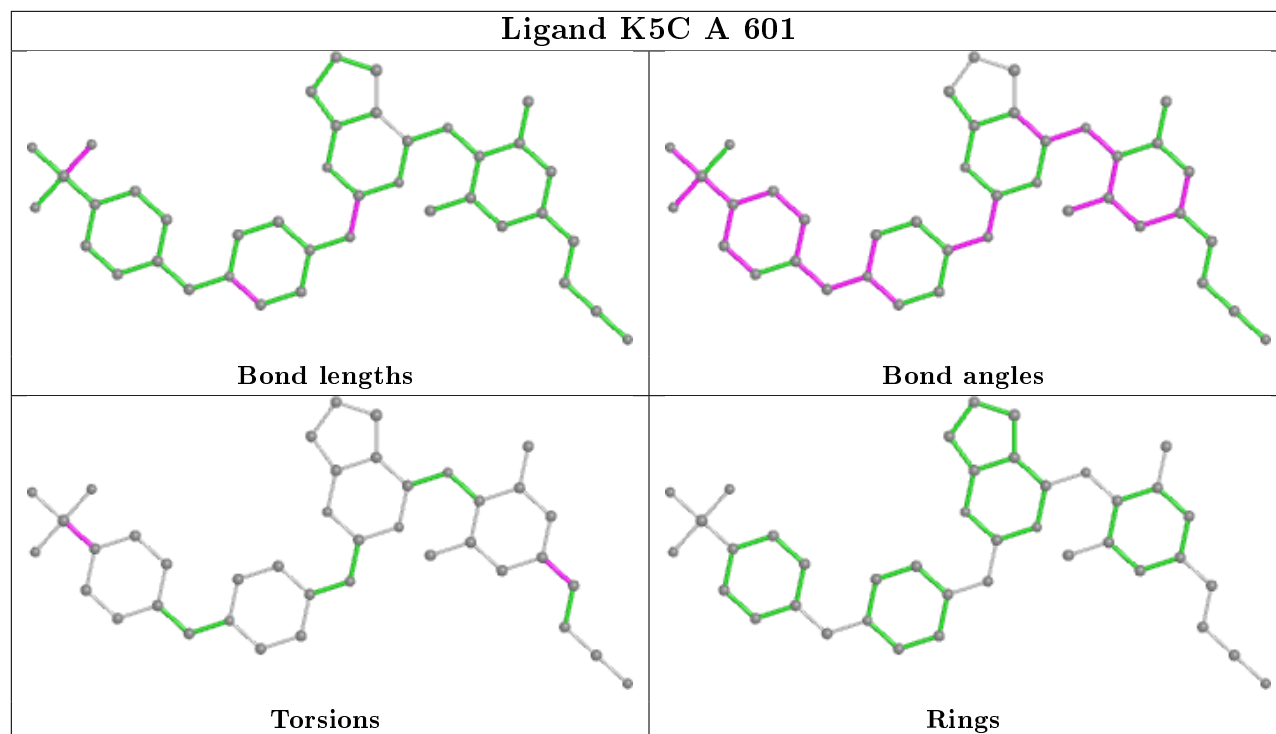
Mol	Chain	Res	Type	Atoms
3	A	601	K5C	C03-C04-C05-C06
3	A	601	K5C	C09-C04-C05-C06
6	A	624	EDO	O1-C1-C2-O2
3	A	601	K5C	C25-C26-S27-O29
3	A	601	K5C	C31-C26-S27-O29
6	B	508	EDO	O1-C1-C2-O2
6	A	623	EDO	O1-C1-C2-O2

There are no ring outliers.

17 monomers are involved in 42 short contacts:

Mol	Chain	Res	Type	Clashes	Symm-Clashes
6	A	617	EDO	1	0
6	B	507	EDO	1	0
6	B	509	EDO	4	0
6	A	615	EDO	2	0
6	A	620	EDO	6	0
6	A	622	EDO	3	0
7	B	501	DMS	3	0
6	B	512	EDO	1	0
6	A	612	EDO	1	0
6	B	514	EDO	5	0
6	A	623	EDO	4	0
6	B	510	EDO	2	0
6	A	624	EDO	2	0
6	A	619	EDO	1	0
6	A	611	EDO	2	0
6	B	508	EDO	1	0
3	A	601	K5C	3	0

The following is a two-dimensional graphical depiction of Mogul quality analysis of bond lengths, bond angles, torsion angles, and ring geometry for all instances of the Ligand of Interest. In addition, ligands with molecular weight > 250 and outliers as shown on the validation Tables will also be included. For torsion angles, if less than 5% of the Mogul distribution of torsion angles is within 10 degrees of the torsion angle in question, then that torsion angle is considered an outlier. Any bond that is central to one or more torsion angles identified as an outlier by Mogul will be highlighted in the graph. For rings, the root-mean-square deviation (RMSD) between the ring in question and similar rings identified by Mogul is calculated over all ring torsion angles. If the average RMSD is greater than 60 degrees and the minimal RMSD between the ring in question and any Mogul-identified rings is also greater than 60 degrees, then that ring is considered an outlier. The outliers are highlighted in purple. The color gray indicates Mogul did not find sufficient equivalents in the CSD to analyse the geometry.



5.7 Other polymers [i](#)

There are no such residues in this entry.

5.8 Polymer linkage issues [i](#)

There are no chain breaks in this entry.

6 Fit of model and data ⓘ

6.1 Protein, DNA and RNA chains ⓘ

In the following table, the column labelled ‘#RSRZ> 2’ contains the number (and percentage) of RSRZ outliers, followed by percent RSRZ outliers for the chain as percentile scores relative to all X-ray entries and entries of similar resolution. The OWAB column contains the minimum, median, 95th percentile and maximum values of the occupancy-weighted average B-factor per residue. The column labelled ‘Q< 0.9’ lists the number of (and percentage) of residues with an average occupancy less than 0.9.

Mol	Chain	Analysed	<RSRZ>	#RSRZ>2		OWAB(Å ²)	Q<0.9
1	A	556/557 (99%)	0.80	82 (14%)	2 2	46, 77, 161, 225	0
2	B	412/428 (96%)	0.85	49 (11%)	4 4	46, 72, 153, 296	0
All	All	968/985 (98%)	0.82	131 (13%)	3 2	46, 75, 159, 296	0

All (131) RSRZ outliers are listed below:

Mol	Chain	Res	Type	RSRZ
2	B	90	VAL	14.2
1	A	257	ILE	12.8
2	B	89	GLU	12.2
1	A	67	ASP	11.6
2	B	230	MET	11.3
1	A	286	THR	8.2
2	B	92	LEU	7.9
1	A	254	VAL	7.8
1	A	290	THR	7.8
2	B	231	GLY	7.6
1	A	260	LEU	7.3
1	A	301	LEU	7.2
2	B	232	TYR	7.2
1	A	68	SER	7.1
1	A	294	PRO	7.0
1	A	293	ILE	6.8
1	A	223	LYS	6.7
1	A	66	LYS	6.7
1	A	282	LEU	6.6
2	B	91	GLN	6.6
2	B	229	TRP	6.2
1	A	292	VAL	6.1
1	A	69	THR	6.1
2	B	202	ILE	5.8

Continued on next page...

Continued from previous page...

Mol	Chain	Res	Type	RSRZ
1	A	246	LEU	5.8
1	A	289	LEU	5.6
2	B	227	PHE	5.5
1	A	295	LEU	5.4
1	A	252	TRP	5.4
1	A	218	ASP	5.2
1	A	221	HIS	5.2
1	A	227	PHE	4.9
1	A	297	GLU	4.9
2	B	4	PRO	4.9
2	B	209	LEU	4.7
2	B	315	HIS	4.6
1	A	283	LEU	4.5
2	B	228	LEU	4.4
1	A	244	ILE	4.4
2	B	205	LEU	4.3
1	A	259	LYS	4.3
2	B	65	LYS	4.3
1	A	250	ASP	4.2
1	A	222	GLN	4.2
2	B	206	ARG	4.2
1	A	288	ALA	4.2
1	A	291	GLU	4.1
1	A	256	ASP	4.0
1	A	220	LYS	4.0
2	B	197	GLN	3.9
1	A	72	ARG	3.9
2	B	5	ILE	3.9
2	B	88	TRP	3.9
2	B	212	TRP	3.9
1	A	285	GLY	3.8
1	A	284	ARG	3.8
1	A	65	LYS	3.8
2	B	359	GLY	3.8
2	B	195	ILE	3.7
1	A	261	VAL	3.7
2	B	168	LEU	3.6
1	A	311	LYS	3.5
1	A	92	LEU	3.5
2	B	210	LEU	3.5
1	A	287	LYS	3.4
2	B	70	LYS	3.3

Continued on next page...

Continued from previous page...

Mol	Chain	Res	Type	RSRZ
2	B	67	ASP	3.3
1	A	228	LEU	3.2
1	A	219	LYS	3.2
1	A	298	GLU	3.2
2	B	357	MET	3.2
2	B	173	LYS	3.2
1	A	302	GLU	3.2
1	A	215	THR	3.1
2	B	198	HIS	3.1
1	A	546	GLU	3.1
1	A	247	PRO	3.1
1	A	253	THR	3.1
1	A	195	ILE	3.1
2	B	166	LYS	3.1
1	A	24	TRP	3.0
1	A	70	LYS	3.0
1	A	214	LEU	3.0
1	A	309	ILE	3.0
1	A	217	PRO	2.9
1	A	273	GLY	2.9
2	B	69	THR	2.9
1	A	207	GLN	2.9
1	A	304	ALA	2.9
2	B	7	THR	2.8
2	B	203	GLU	2.8
1	A	183	TYR	2.8
2	B	66	LYS	2.8
1	A	279	LEU	2.8
2	B	193	LEU	2.7
2	B	169	GLU	2.6
2	B	201	LYS	2.6
1	A	410[A]	TRP	2.6
1	A	216	THR	2.6
2	B	211	ARG	2.6
2	B	358	ARG	2.6
2	B	104	LYS	2.5
1	A	551	LEU	2.5
1	A	278	GLN	2.5
1	A	308	GLU	2.5
1	A	255	ASN	2.4
1	A	550	LYS	2.4
1	A	74	LEU	2.4

Continued on next page...

Continued from previous page...

Mol	Chain	Res	Type	RSRZ
1	A	264	LEU	2.4
2	B	318	TYR	2.4
2	B	87	PHE	2.4
1	A	211	ARG	2.3
2	B	207	GLN	2.3
1	A	275	LYS	2.3
2	B	208	HIS	2.3
1	A	251	SER	2.2
1	A	312	GLU	2.2
2	B	68	SER	2.2
2	B	172	LYS	2.2
1	A	305	GLU	2.2
1	A	406	TRP	2.2
1	A	361	HIS	2.2
1	A	300	GLU	2.1
1	A	188	TYR	2.1
2	B	391	LEU	2.1
1	A	52	PRO	2.0
1	A	114	ALA	2.0
1	A	360	ALA	2.0
2	B	393	ILE	2.0
1	A	281	LYS	2.0
1	A	548	VAL	2.0

6.2 Non-standard residues in protein, DNA, RNA chains [i](#)

There are no non-standard protein/DNA/RNA residues in this entry.

6.3 Carbohydrates [i](#)

There are no monosaccharides in this entry.

6.4 Ligands [i](#)

In the following table, the Atoms column lists the number of modelled atoms in the group and the number defined in the chemical component dictionary. The B-factors column lists the minimum, median, 95th percentile and maximum values of B factors of atoms in the group. The column labelled 'Q< 0.9' lists the number of atoms with occupancy less than 0.9.

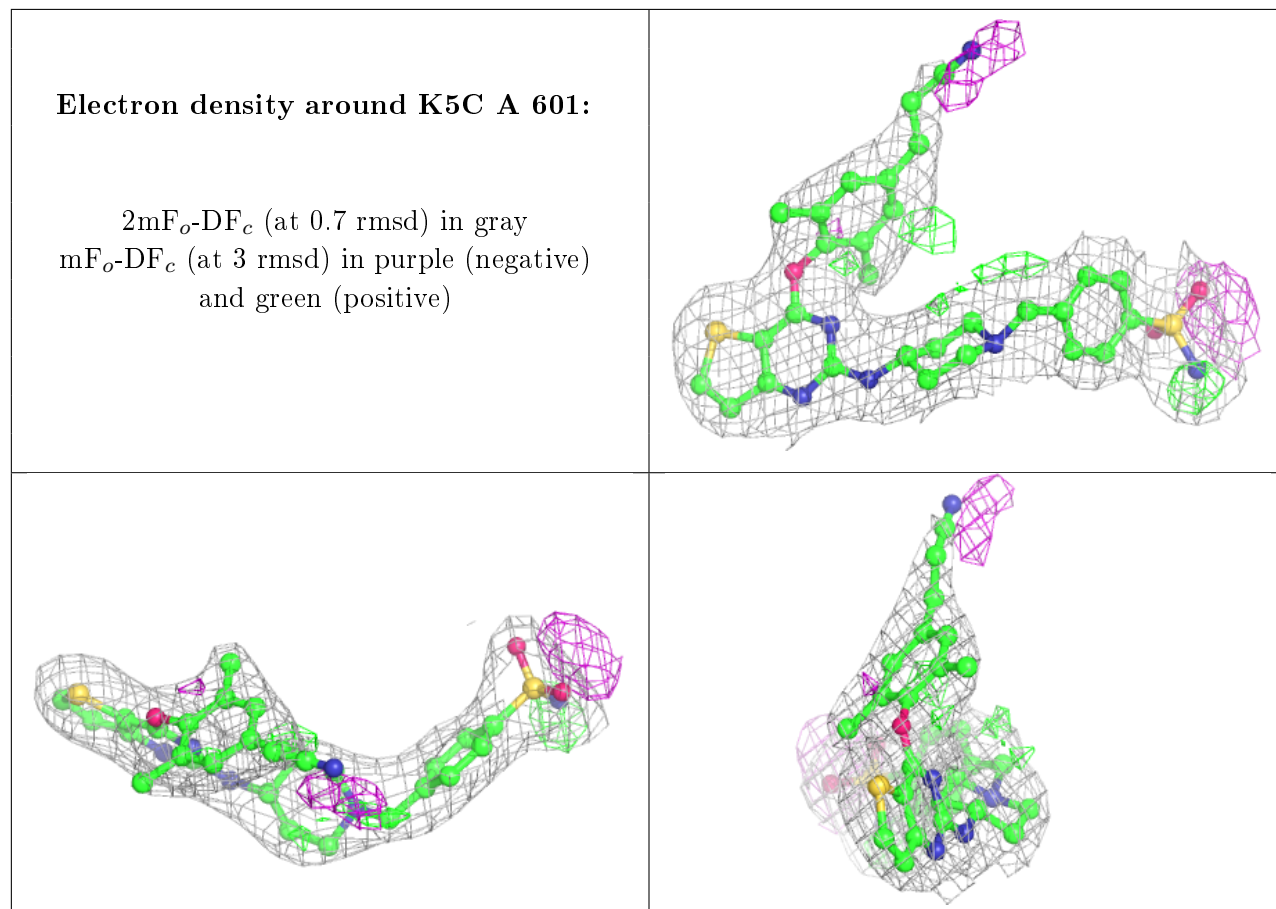
Continued on next page...

Continued from previous page...

Mol	Type	Chain	Res	Atoms	RSCC	RSR	B-factors(Å ²)	Q<0.9
6	EDO	B	509	4/4	0.57	0.27	93,94,95,99	0
6	EDO	A	610	4/4	0.61	0.28	117,120,123,125	0
6	EDO	A	613	4/4	0.65	0.17	111,112,112,113	0
6	EDO	B	507	4/4	0.69	0.20	86,88,90,92	0
6	EDO	A	622	4/4	0.69	0.61	142,143,145,147	0
6	EDO	A	617	4/4	0.69	0.40	82,91,104,110	0
4	MG	A	602	1/1	0.71	0.47	97,97,97,97	0
6	EDO	A	615	4/4	0.73	0.17	76,76,81,88	0
6	EDO	A	611	4/4	0.73	0.21	85,86,87,89	0
6	EDO	A	621	4/4	0.80	0.41	105,107,109,112	0
6	EDO	A	624	4/4	0.80	0.15	102,102,102,105	0
6	EDO	A	609	4/4	0.81	0.20	88,91,91,93	0
6	EDO	B	510	4/4	0.81	0.17	92,93,93,96	0
6	EDO	B	505	4/4	0.81	0.30	70,75,80,81	0
6	EDO	B	513	4/4	0.82	0.37	123,123,124,124	0
6	EDO	A	623	4/4	0.85	0.29	101,102,104,109	0
5	SO4	A	606	5/5	0.85	0.13	139,140,143,144	0
6	EDO	B	514	4/4	0.87	0.33	78,89,97,109	0
6	EDO	A	619	4/4	0.87	0.34	93,94,95,97	0
6	EDO	A	612	4/4	0.88	0.10	80,81,85,89	0
6	EDO	A	616	4/4	0.90	0.15	80,80,81,81	0
6	EDO	A	620	4/4	0.90	0.26	77,78,82,85	0
5	SO4	A	608	5/5	0.90	0.33	149,151,153,154	0
6	EDO	B	508	4/4	0.91	0.31	66,74,74,78	0
5	SO4	B	503	5/5	0.91	0.34	157,158,159,161	0
3	K5C	A	601	40/40	0.91	0.15	54,73,107,107	0
6	EDO	B	512	4/4	0.92	0.54	124,128,132,135	0
6	EDO	B	515	4/4	0.92	0.41	108,109,109,109	0
5	SO4	B	502	5/5	0.92	0.27	129,133,134,140	0
6	EDO	A	618	4/4	0.93	0.15	73,82,83,84	0
6	EDO	B	506	4/4	0.93	0.20	70,76,83,87	0
5	SO4	A	604	5/5	0.93	0.11	125,126,129,130	0
6	EDO	B	511	4/4	0.94	0.18	80,82,86,91	0
5	SO4	A	605	5/5	0.94	0.10	115,116,118,124	0
6	EDO	A	614	4/4	0.94	0.18	65,66,66,71	0
5	SO4	B	504	5/5	0.95	0.20	128,128,129,132	0
5	SO4	A	607	5/5	0.95	0.22	107,108,111,115	0
5	SO4	A	603	5/5	0.95	0.36	146,147,152,161	0
7	DMS	B	501	4/4	0.99	0.17	55,72,72,79	0

The following is a graphical depiction of the model fit to experimental electron density of all

instances of the Ligand of Interest. In addition, ligands with molecular weight > 250 and outliers as shown on the geometry validation Tables will also be included. Each fit is shown from different orientation to approximate a three-dimensional view.



6.5 Other polymers ⓘ

There are no such residues in this entry.