



# Full wwPDB X-ray Structure Validation Report ⓘ

Oct 31, 2021 – 06:13 AM EDT

PDB ID : 3C1H  
Title : Substrate binding, deprotonation and selectivity at the periplasmic entrance of the E. coli ammonia channel AmtB  
Authors : Lupo, D.; Winkler, F.K.  
Deposited on : 2008-01-23  
Resolution : 2.20 Å(reported)

This is a Full wwPDB X-ray Structure Validation Report for a publicly released PDB entry.

We welcome your comments at [validation@mail.wwpdb.org](mailto:validation@mail.wwpdb.org)

A user guide is available at

<https://www.wwpdb.org/validation/2017/XrayValidationReportHelp>

with specific help available everywhere you see the ⓘ symbol.

---

The following versions of software and data (see [references ⓘ](#)) were used in the production of this report:

MolProbity	:	4.02b-467
Mogul	:	1.8.5 (274361), CSD as541be (2020)
Xtriage (Phenix)	:	1.13
EDS	:	2.23.2
Percentile statistics	:	20191225.v01 (using entries in the PDB archive December 25th 2019)
Refmac	:	5.8.0158
CCP4	:	7.0.044 (Gargrove)
Ideal geometry (proteins)	:	Engh & Huber (2001)
Ideal geometry (DNA, RNA)	:	Parkinson et al. (1996)
Validation Pipeline (wwPDB-VP)	:	2.23.2

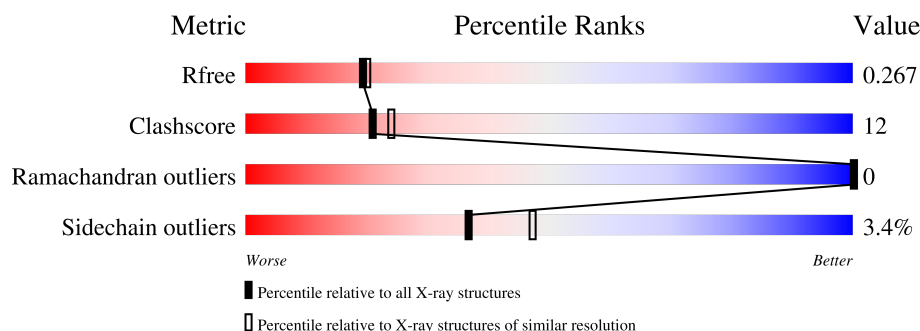
# 1 Overall quality at a glance

The following experimental techniques were used to determine the structure:

*X-RAY DIFFRACTION*

The reported resolution of this entry is 2.20 Å.

Percentile scores (ranging between 0-100) for global validation metrics of the entry are shown in the following graphic. The table shows the number of entries on which the scores are based.



Metric	Whole archive (#Entries)	Similar resolution (#Entries, resolution range(Å))
$R_{free}$	130704	4898 (2.20-2.20)
Clashscore	141614	5594 (2.20-2.20)
Ramachandran outliers	138981	5503 (2.20-2.20)
Sidechain outliers	138945	5504 (2.20-2.20)

The table below summarises the geometric issues observed across the polymeric chains and their fit to the electron density. The red, orange, yellow and green segments of the lower bar indicate the fraction of residues that contain outliers for  $\geq 3$ , 2, 1 and 0 types of geometric quality criteria respectively. A grey segment represents the fraction of residues that are not modelled. The numeric value for each fraction is indicated below the corresponding segment, with a dot representing fractions  $\leq 5\%$ .

Mol	Chain	Length	Quality of chain
1	A	424	

The following table lists non-polymeric compounds, carbohydrate monomers and non-standard residues in protein, DNA, RNA chains that are outliers for geometric or electron-density-fit criteria:

Mol	Type	Chain	Res	Chirality	Geometry	Clashes	Electron density
3	LDA	A	426	-	-	X	-
4	IMD	A	427	-	-	X	-

## 2 Entry composition

There are 5 unique types of molecules in this entry. The entry contains 2796 atoms, of which 0 are hydrogens and 0 are deuteriums.

In the tables below, the ZeroOcc column contains the number of atoms modelled with zero occupancy, the AltConf column contains the number of residues with at least one atom in alternate conformation and the Trace column contains the number of residues modelled with at most 2 atoms.

- Molecule 1 is a protein called Ammonia channel.

Mol	Chain	Residues	Atoms					ZeroOcc	AltConf	Trace
1	A	363	Total	C	N	O	S	0	1	0
			2641	1747	425	450	19			

There are 19 discrepancies between the modelled and reference sequences:

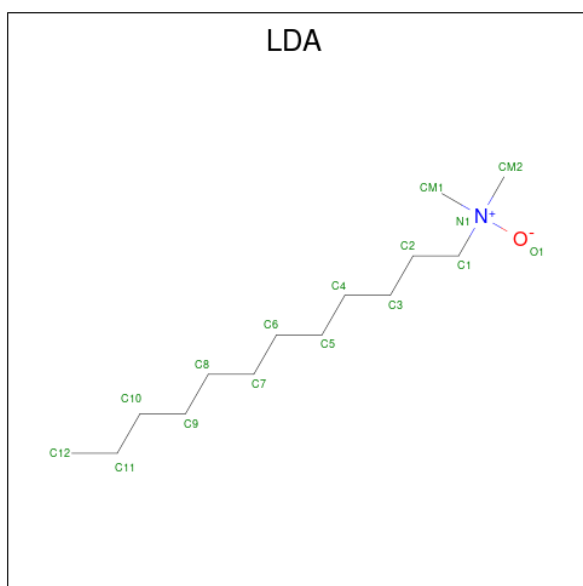
Chain	Residue	Modelled	Actual	Comment	Reference
A	107	ALA	PHE	engineered mutation	UNP P69681
A	407	ASP	-	expression tag	UNP P69681
A	408	GLN	-	expression tag	UNP P69681
A	409	ALA	-	expression tag	UNP P69681
A	410	GLN	-	expression tag	UNP P69681
A	411	GLN	-	expression tag	UNP P69681
A	412	PRO	-	expression tag	UNP P69681
A	413	ALA	-	expression tag	UNP P69681
A	414	GLN	-	expression tag	UNP P69681
A	415	ALA	-	expression tag	UNP P69681
A	416	ASP	-	expression tag	UNP P69681
A	417	LEU	-	expression tag	UNP P69681
A	418	GLU	-	expression tag	UNP P69681
A	419	HIS	-	expression tag	UNP P69681
A	420	HIS	-	expression tag	UNP P69681
A	421	HIS	-	expression tag	UNP P69681
A	422	HIS	-	expression tag	UNP P69681
A	423	HIS	-	expression tag	UNP P69681
A	424	HIS	-	expression tag	UNP P69681

- Molecule 2 is ACETATE ION (three-letter code: ACT) (formula: C<sub>2</sub>H<sub>3</sub>O<sub>2</sub>).



Mol	Chain	Residues	Atoms			ZeroOcc	AltConf
2	A	1	Total	C	O	0	0
			4	2	2		

- Molecule 3 is LAURYL DIMETHYLAMINE-N-OXIDE (three-letter code: LDA) (formula:  $C_{14}H_{31}NO$ ).



Mol	Chain	Residues	Atoms				ZeroOcc	AltConf
3	A	1	Total	C	N	O	0	0
			16	14	1	1		

- Molecule 4 is IMIDAZOLE (three-letter code: IMD) (formula:  $C_3H_5N_2$ ).



Mol	Chain	Residues	Atoms			ZeroOcc	AltConf
4	A	1	Total	C	N	0	0
			5	3	2		

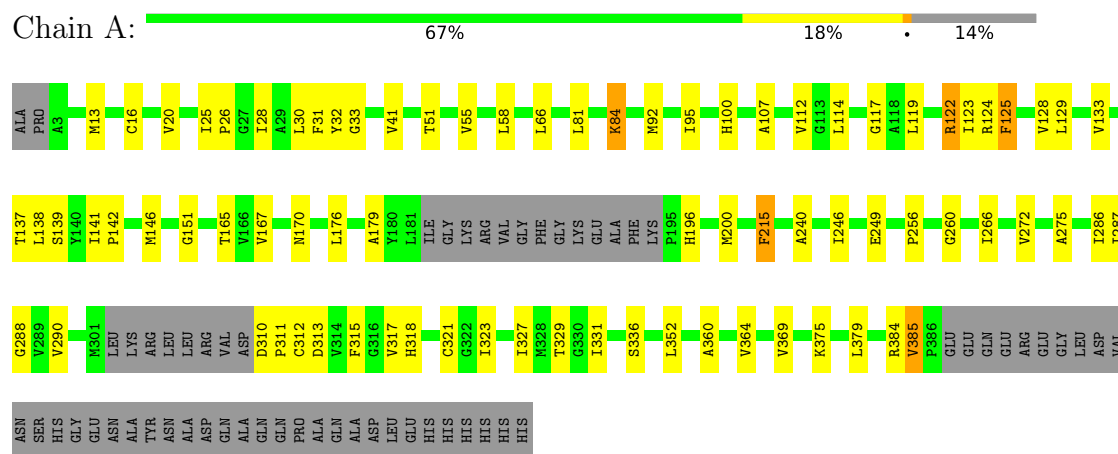
- Molecule 5 is water.

Mol	Chain	Residues	Atoms		ZeroOcc	AltConf
5	A	130	Total	O	0	0
			130	130		

### 3 Residue-property plots [i](#)

These plots are drawn for all protein, RNA, DNA and oligosaccharide chains in the entry. The first graphic for a chain summarises the proportions of the various outlier classes displayed in the second graphic. The second graphic shows the sequence view annotated by issues in geometry. Residues are color-coded according to the number of geometric quality criteria for which they contain at least one outlier: green = 0, yellow = 1, orange = 2 and red = 3 or more. Stretches of 2 or more consecutive residues without any outlier are shown as a green connector. Residues present in the sample, but not in the model, are shown in grey.

- Molecule 1: Ammonia channel



## 4 Data and refinement statistics

Property	Value	Source
Space group	P 63	Depositor
Cell constants a, b, c, $\alpha$ , $\beta$ , $\gamma$	108.17Å 108.17Å 84.66Å 90.00° 90.00° 120.00°	Depositor
Resolution (Å)	15.00 – 2.20 15.00 – 2.20	Depositor EDS
% Data completeness (in resolution range)	99.7 (15.00-2.20) 99.7 (15.00-2.20)	Depositor EDS
$R_{merge}$	(Not available)	Depositor
$R_{sym}$	0.07	Depositor
$\langle I/\sigma(I) \rangle$ <sup>1</sup>	2.36 (at 2.20Å)	Xtriage
Refinement program	REFMAC 5.2.0019	Depositor
R, $R_{free}$	0.204 , 0.231 0.252 , 0.267	Depositor DCC
$R_{free}$ test set	1447 reflections (5.07%)	wwPDB-VP
Wilson B-factor (Å <sup>2</sup> )	32.9	Xtriage
Anisotropy	0.380	Xtriage
Bulk solvent $k_{sol}$ (e/Å <sup>3</sup> ), $B_{sol}$ (Å <sup>2</sup> )	0.31 , 68.5	EDS
L-test for twinning <sup>2</sup>	$\langle  L  \rangle = 0.47$ , $\langle L^2 \rangle = 0.29$	Xtriage
Estimated twinning fraction	0.068 for h,-h-k,-l	Xtriage
$F_o, F_c$ correlation	0.94	EDS
Total number of atoms	2796	wwPDB-VP
Average B, all atoms (Å <sup>2</sup> )	30.0	wwPDB-VP

Xtriage's analysis on translational NCS is as follows: *The largest off-origin peak in the Patterson function is 4.30% of the height of the origin peak. No significant pseudotranslation is detected.*

<sup>1</sup>Intensities estimated from amplitudes.

<sup>2</sup>Theoretical values of  $\langle |L| \rangle$ ,  $\langle L^2 \rangle$  for acentric reflections are 0.5, 0.333 respectively for untwinned datasets, and 0.375, 0.2 for perfectly twinned datasets.

## 5 Model quality

### 5.1 Standard geometry

Bond lengths and bond angles in the following residue types are not validated in this section: ACT, LDA, IMD

The Z score for a bond length (or angle) is the number of standard deviations the observed value is removed from the expected value. A bond length (or angle) with  $|Z| > 5$  is considered an outlier worth inspection. RMSZ is the root-mean-square of all Z scores of the bond lengths (or angles).

Mol	Chain	Bond lengths		Bond angles	
		RMSZ	$\# Z  > 5$	RMSZ	$\# Z  > 5$
1	A	0.53	0/2705	0.60	0/3690

There are no bond length outliers.

There are no bond angle outliers.

There are no chirality outliers.

There are no planarity outliers.

### 5.2 Too-close contacts

In the following table, the Non-H and H(model) columns list the number of non-hydrogen atoms and hydrogen atoms in the chain respectively. The H(added) column lists the number of hydrogen atoms added and optimized by MolProbity. The Clashes column lists the number of clashes within the asymmetric unit, whereas Symm-Clashes lists symmetry-related clashes.

Mol	Chain	Non-H	H(model)	H(added)	Clashes	Symm-Clashes
1	A	2641	0	2707	65	0
2	A	4	0	3	0	0
3	A	16	0	31	11	0
4	A	5	0	5	4	0
5	A	130	0	0	4	0
All	All	2796	0	2746	66	0

The all-atom clashscore is defined as the number of clashes found per 1000 atoms (including hydrogen atoms). The all-atom clashscore for this structure is 12.

All (66) close contacts within the same asymmetric unit are listed below, sorted by their clash magnitude.



Atom-1	Atom-2	Interatomic distance (Å)	Clash overlap (Å)
1:A:176:LEU:HD11	1:A:315:PHE:HB2	1.34	1.09
1:A:176:LEU:CD1	1:A:315:PHE:HB2	1.84	1.06
1:A:179:ALA:HB2	1:A:311:PRO:HD3	1.41	1.00
1:A:384:ARG:HB3	1:A:385:VAL:HA	1.48	0.93
1:A:384:ARG:HB3	1:A:385:VAL:CA	2.01	0.90
1:A:176:LEU:HD11	1:A:315:PHE:CB	2.03	0.87
1:A:246:ILE:HD12	1:A:256:PRO:HB3	1.57	0.85
1:A:167:VAL:HG11	3:A:426:LDA:H101	1.59	0.83
1:A:119:LEU:HB2	5:A:557:HOH:O	1.79	0.82
1:A:176:LEU:HD13	1:A:315:PHE:HB2	1.68	0.76
1:A:310:ASP:OD2	1:A:313:ASP:HA	1.87	0.73
1:A:384:ARG:CB	1:A:385:VAL:HA	2.18	0.73
1:A:286:ILE:O	1:A:290:VAL:HG23	1.88	0.73
1:A:125:PHE:O	1:A:128:VAL:HG12	1.92	0.69
1:A:33:GLY:O	1:A:196:HIS:HE1	1.76	0.68
1:A:384:ARG:HB3	1:A:385:VAL:C	2.16	0.65
1:A:124:ARG:HH21	1:A:384:ARG:HG3	1.61	0.64
1:A:137:THR:HA	1:A:141:ILE:HD12	1.81	0.63
1:A:179:ALA:CB	1:A:311:PRO:HD3	2.24	0.62
1:A:287:ILE:HG13	5:A:504:HOH:O	1.98	0.62
1:A:119:LEU:O	1:A:123:ILE:HG22	2.00	0.61
1:A:100[B]:HIS:CD2	4:A:427:IMD:HN1	2.19	0.60
1:A:33:GLY:O	1:A:196:HIS:CE1	2.55	0.60
1:A:124:ARG:NH2	1:A:384:ARG:HG3	2.18	0.58
1:A:323:ILE:O	1:A:327:ILE:HG12	2.03	0.57
1:A:215:PHE:CD2	3:A:426:LDA:H123	2.40	0.56
1:A:215:PHE:CG	3:A:426:LDA:H123	2.42	0.55
1:A:51:THR:HG22	1:A:129:LEU:HD23	1.89	0.55
1:A:240:ALA:HB3	1:A:288:GLY:HA3	1.89	0.54
1:A:375:LYS:O	1:A:379:LEU:HG	2.08	0.54
1:A:100[B]:HIS:HE2	4:A:427:IMD:C2	2.22	0.53
1:A:28:ILE:CD1	3:A:426:LDA:H42	2.38	0.53
1:A:312:CYS:O	3:A:426:LDA:HM23	2.09	0.52
1:A:66:LEU:HB3	1:A:141:ILE:HG21	1.92	0.51
1:A:95:ILE:HD11	1:A:100[B]:HIS:CD2	2.46	0.51
1:A:146:MET:HA	1:A:151:GLY:HA3	1.93	0.51
1:A:55:VAL:HG21	1:A:112:VAL:HG21	1.93	0.50
1:A:31:PHE:CZ	3:A:426:LDA:H11	2.47	0.50
1:A:41:VAL:HG21	1:A:196:HIS:CE1	2.47	0.50
1:A:30:LEU:O	1:A:200:MET:HG2	2.12	0.50
1:A:58:LEU:HD11	1:A:133:VAL:HG22	1.95	0.48
1:A:138:LEU:O	1:A:142:PRO:HG2	2.14	0.48

*Continued on next page...*

Continued from previous page...

Atom-1	Atom-2	Interatomic distance (Å)	Clash overlap (Å)
1:A:100[B]:HIS:CD2	4:A:427:IMD:N1	2.82	0.47
3:A:426:LDA:HM11	5:A:520:HOH:O	2.15	0.46
1:A:84:LYS:HD2	1:A:84:LYS:HA	1.59	0.46
1:A:266:ILE:HG21	3:A:426:LDA:H12	1.98	0.46
1:A:331:ILE:HG13	1:A:352:LEU:HD21	1.98	0.46
1:A:100[B]:HIS:HE2	4:A:427:IMD:H2	1.82	0.45
1:A:13:MET:HG3	1:A:95:ILE:HD13	1.98	0.44
1:A:167:VAL:HG11	3:A:426:LDA:C10	2.41	0.44
1:A:107:ALA:HB1	1:A:215:PHE:CZ	2.53	0.44
1:A:165:THR:O	1:A:170:ASN:HB2	2.18	0.43
1:A:124:ARG:HA	1:A:385:VAL:HG12	2.00	0.43
1:A:32:TYR:CD2	1:A:117:GLY:HA3	2.53	0.42
1:A:124:ARG:HB2	1:A:384:ARG:HB2	2.00	0.42
1:A:249:GLU:OE1	1:A:260:GLY:HA3	2.19	0.42
1:A:317:VAL:O	1:A:321:CYS:HB2	2.19	0.42
1:A:275:ALA:HB2	1:A:329:THR:OG1	2.20	0.42
1:A:114:LEU:HD13	3:A:426:LDA:H41	2.01	0.42
1:A:318:HIS:HE2	3:A:426:LDA:H21	1.84	0.42
1:A:16:CYS:O	1:A:20:VAL:HG23	2.20	0.41
1:A:122:ARG:H	1:A:122:ARG:HG2	1.66	0.41
1:A:360:ALA:O	1:A:364:VAL:HG23	2.21	0.41
1:A:286:ILE:HB	5:A:504:HOH:O	2.22	0.40
1:A:139:SER:HB2	1:A:369:VAL:HG11	2.03	0.40
1:A:25:ILE:HA	1:A:26:PRO:HA	1.94	0.40

There are no symmetry-related clashes.

## 5.3 Torsion angles [i](#)

### 5.3.1 Protein backbone [i](#)

In the following table, the Percentiles column shows the percent Ramachandran outliers of the chain as a percentile score with respect to all X-ray entries followed by that with respect to entries of similar resolution.

The Analysed column shows the number of residues for which the backbone conformation was analysed, and the total number of residues.

Mol	Chain	Analysed	Favoured	Allowed	Outliers	Percentiles	
1	A	358/424 (84%)	337 (94%)	21 (6%)	0	100	100

There are no Ramachandran outliers to report.

### 5.3.2 Protein sidechains ⓘ

In the following table, the Percentiles column shows the percent sidechain outliers of the chain as a percentile score with respect to all X-ray entries followed by that with respect to entries of similar resolution.

The Analysed column shows the number of residues for which the sidechain conformation was analysed, and the total number of residues.

Mol	Chain	Analysed	Rotameric	Outliers	Percentiles
1	A	263/311 (85%)	254 (97%)	9 (3%)	37 47

All (9) residues with a non-rotameric sidechain are listed below:

Mol	Chain	Res	Type
1	A	81	LEU
1	A	84	LYS
1	A	92	MET
1	A	122	ARG
1	A	125	PHE
1	A	215	PHE
1	A	272	VAL
1	A	336	SER
1	A	385	VAL

Sometimes sidechains can be flipped to improve hydrogen bonding and reduce clashes. All (3) such sidechains are listed below:

Mol	Chain	Res	Type
1	A	79	ASN
1	A	104	GLN
1	A	196	HIS

### 5.3.3 RNA ⓘ

There are no RNA molecules in this entry.

## 5.4 Non-standard residues in protein, DNA, RNA chains ⓘ

There are no non-standard protein/DNA/RNA residues in this entry.

## 5.5 Carbohydrates [i](#)

There are no monosaccharides in this entry.

## 5.6 Ligand geometry [i](#)

3 ligands are modelled in this entry.

In the following table, the Counts columns list the number of bonds (or angles) for which Mogul statistics could be retrieved, the number of bonds (or angles) that are observed in the model and the number of bonds (or angles) that are defined in the Chemical Component Dictionary. The Link column lists molecule types, if any, to which the group is linked. The Z score for a bond length (or angle) is the number of standard deviations the observed value is removed from the expected value. A bond length (or angle) with  $|Z| > 2$  is considered an outlier worth inspection. RMSZ is the root-mean-square of all Z scores of the bond lengths (or angles).

Mol	Type	Chain	Res	Link	Bond lengths			Bond angles		
					Counts	RMSZ	$\# Z  > 2$	Counts	RMSZ	$\# Z  > 2$
2	ACT	A	425	-	1,3,3	1.41	0	0,3,3	-	-
4	IMD	A	427	-	3,5,5	0.50	0	4,5,5	0.44	0
3	LDA	A	426	-	12,15,15	2.01	1 (8%)	14,17,17	0.73	0

In the following table, the Chirals column lists the number of chiral outliers, the number of chiral centers analysed, the number of these observed in the model and the number defined in the Chemical Component Dictionary. Similar counts are reported in the Torsion and Rings columns. '-' means no outliers of that kind were identified.

Mol	Type	Chain	Res	Link	Chirals	Torsions	Rings
4	IMD	A	427	-	-	-	0/1/1/1
3	LDA	A	426	-	-	8/13/13/13	-

All (1) bond length outliers are listed below:

Mol	Chain	Res	Type	Atoms	Z	Observed(Å)	Ideal(Å)
3	A	426	LDA	O1-N1	-6.87	1.26	1.42

There are no bond angle outliers.

There are no chirality outliers.

All (8) torsion outliers are listed below:

Mol	Chain	Res	Type	Atoms
3	A	426	LDA	C2-C1-N1-CM1
3	A	426	LDA	C2-C1-N1-CM2

*Continued on next page...*

*Continued from previous page...*

Mol	Chain	Res	Type	Atoms
3	A	426	LDA	C6-C7-C8-C9
3	A	426	LDA	C11-C10-C9-C8
3	A	426	LDA	C1-C2-C3-C4
3	A	426	LDA	C2-C1-N1-O1
3	A	426	LDA	C7-C8-C9-C10
3	A	426	LDA	C5-C6-C7-C8

There are no ring outliers.

2 monomers are involved in 15 short contacts:

Mol	Chain	Res	Type	Clashes	Symm-Clashes
4	A	427	IMD	4	0
3	A	426	LDA	11	0

## 5.7 Other polymers [i](#)

There are no such residues in this entry.

## 5.8 Polymer linkage issues [i](#)

There are no chain breaks in this entry.

## 6 Fit of model and data [i](#)

### 6.1 Protein, DNA and RNA chains [i](#)

Unable to reproduce the depositors R factor - this section is therefore empty.

### 6.2 Non-standard residues in protein, DNA, RNA chains [i](#)

Unable to reproduce the depositors R factor - this section is therefore empty.

### 6.3 Carbohydrates [i](#)

Unable to reproduce the depositors R factor - this section is therefore empty.

### 6.4 Ligands [i](#)

Unable to reproduce the depositors R factor - this section is therefore empty.

### 6.5 Other polymers [i](#)

Unable to reproduce the depositors R factor - this section is therefore empty.