



Full wwPDB X-ray Structure Validation Report ⓘ

Apr 20, 2021 – 12:29 AM JST

PDB ID : 7C3G
Title : Crystal structure of human ALK2 kinase domain with R206H mutation in complex with a bicyclic pyrazole inhibitor RK-73134
Authors : Sakai, N.; Mishima-Tsumagari, C.; Matsumoto, T.; Shirouzu, M.
Deposited on : 2020-05-12
Resolution : 1.80 Å(reported)

This is a Full wwPDB X-ray Structure Validation Report for a publicly released PDB entry.

We welcome your comments at validation@mail.wwpdb.org

A user guide is available at

<https://www.wwpdb.org/validation/2017/XrayValidationReportHelp>

with specific help available everywhere you see the ⓘ symbol.

The following versions of software and data (see [references ⓘ](#)) were used in the production of this report:

MolProbity : 4.02b-467
Mogul : 1.8.5 (274361), CSD as541be (2020)
Xtriage (Phenix) : 1.13
EDS : 2.18
buster-report : 1.1.7 (2018)
Percentile statistics : 20191225.v01 (using entries in the PDB archive December 25th 2019)
Refmac : 5.8.0158
CCP4 : 7.0.044 (Gargrove)
Ideal geometry (proteins) : Engh & Huber (2001)
Ideal geometry (DNA, RNA) : Parkinson et al. (1996)
Validation Pipeline (wwPDB-VP) : 2.18

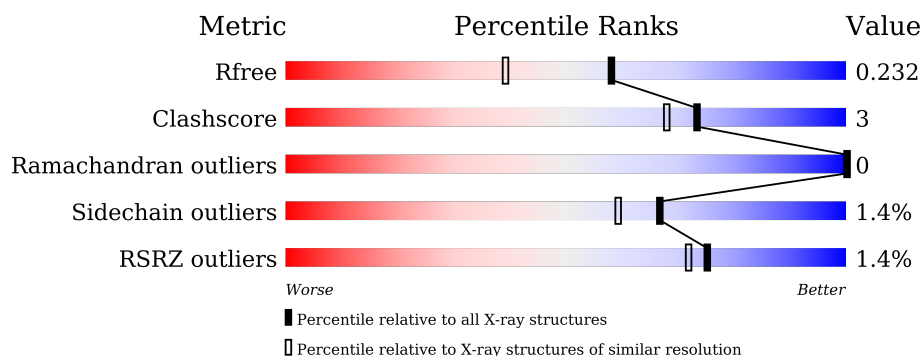
1 Overall quality at a glance

The following experimental techniques were used to determine the structure:

X-RAY DIFFRACTION

The reported resolution of this entry is 1.80 Å.

Percentile scores (ranging between 0-100) for global validation metrics of the entry are shown in the following graphic. The table shows the number of entries on which the scores are based.



Metric	Whole archive (#Entries)	Similar resolution (#Entries, resolution range(Å))
R_{free}	130704	5950 (1.80-1.80)
Clashscore	141614	6793 (1.80-1.80)
Ramachandran outliers	138981	6697 (1.80-1.80)
Sidechain outliers	138945	6696 (1.80-1.80)
RSRZ outliers	127900	5850 (1.80-1.80)

The table below summarises the geometric issues observed across the polymeric chains and their fit to the electron density. The red, orange, yellow and green segments of the lower bar indicate the fraction of residues that contain outliers for ≥ 3 , 2, 1 and 0 types of geometric quality criteria respectively. A grey segment represents the fraction of residues that are not modelled. The numeric value for each fraction is indicated below the corresponding segment, with a dot representing fractions $\leq 5\%$. The upper red bar (where present) indicates the fraction of residues that have poor fit to the electron density. The numeric value is given above the bar.

Mol	Chain	Length	Quality of chain
1	A	301	 % 88% 9% .
1	B	301	 % 89% 7% ..

The following table lists non-polymeric compounds, carbohydrate monomers and non-standard residues in protein, DNA, RNA chains that are outliers for geometric or electron-density-fit criteria:

Mol	Type	Chain	Res	Chirality	Geometry	Clashes	Electron density
3	SO4	A	508	-	-	-	X

2 Entry composition

There are 5 unique types of molecules in this entry. The entry contains 5335 atoms, of which 0 are hydrogens and 0 are deuteriums.

In the tables below, the ZeroOcc column contains the number of atoms modelled with zero occupancy, the AltConf column contains the number of residues with at least one atom in alternate conformation and the Trace column contains the number of residues modelled with at most 2 atoms.

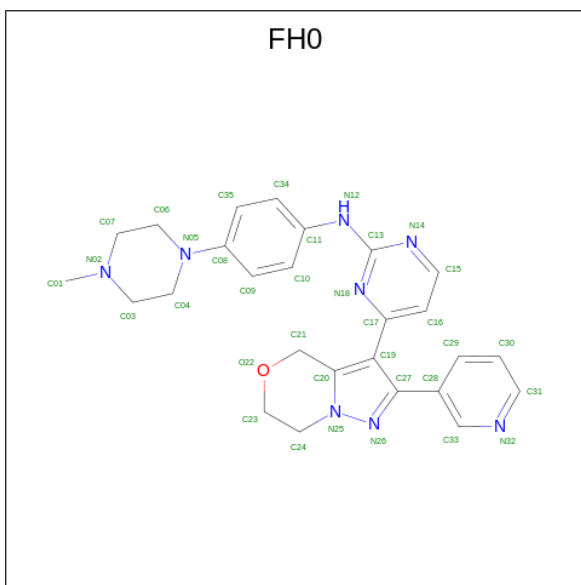
- Molecule 1 is a protein called Activin receptor type-1.

Mol	Chain	Residues	Atoms					ZeroOcc	AltConf	Trace
1	A	294	Total	C	N	O	S	0	2	0
			2355	1501	406	431	17			
1	B	292	Total	C	N	O	S	0	1	0
			2340	1489	404	432	15			

There are 6 discrepancies between the modelled and reference sequences:

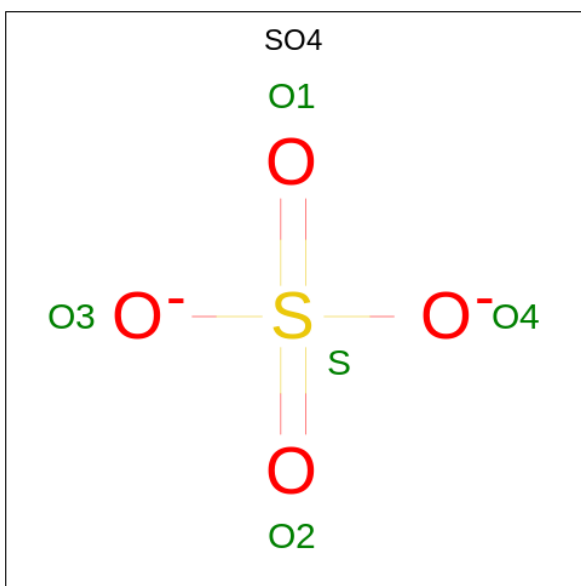
Chain	Residue	Modelled	Actual	Comment	Reference
A	199	SER	-	expression tag	UNP Q04771
A	200	MET	-	expression tag	UNP Q04771
A	206	HIS	ARG	engineered mutation	UNP Q04771
B	199	SER	-	expression tag	UNP Q04771
B	200	MET	-	expression tag	UNP Q04771
B	206	HIS	ARG	engineered mutation	UNP Q04771

- Molecule 2 is {N}-[4-(4-methylpiperazin-1-yl)phenyl]-4-(2-pyridin-3-yl-6,7-dihydro-4 {H}-pyrazolo[5,1-c][1,4]oxazin-3-yl)pyrimidin-2-amine (three-letter code: FH0) (formula: C₂₆H₂₈N₈O) (labeled as "Ligand of Interest" by depositor).



Mol	Chain	Residues	Atoms				ZeroOcc	AltConf
2	A	1	Total	C	N	O	0	0
			35	26	8	1		
2	B	1	Total	C	N	O	0	0
			35	26	8	1		

- Molecule 3 is SULFATE ION (three-letter code: SO4) (formula: O₄S).



Mol	Chain	Residues	Atoms			ZeroOcc	AltConf
3	A	1	Total	O	S	0	0
			5	4	1		
3	A	1	Total	O	S	0	0
			5	4	1		

Continued on next page...

Continued from previous page...

Mol	Chain	Residues	Atoms			ZeroOcc	AltConf
3	A	1	Total	O	S	0	0
			5	4	1		
3	A	1	Total	O	S	0	0
			5	4	1		
3	A	1	Total	O	S	0	0
			5	4	1		
3	A	1	Total	O	S	0	0
			5	4	1		
3	A	1	Total	O	S	0	0
			5	4	1		
3	A	1	Total	O	S	0	0
			5	4	1		
3	A	1	Total	O	S	0	0
			5	4	1		
3	B	1	Total	O	S	0	0
			5	4	1		
3	B	1	Total	O	S	0	0
			5	4	1		
3	B	1	Total	O	S	0	0
			5	4	1		
3	B	1	Total	O	S	0	0
			5	4	1		
3	B	1	Total	O	S	0	0
			5	4	1		
3	B	1	Total	O	S	0	0
			5	4	1		
3	B	1	Total	O	S	0	0
			5	4	1		

- Molecule 4 is 1,2-ETHANEDIOL (three-letter code: EDO) (formula: C₂H₆O₂).



Mol	Chain	Residues	Atoms			ZeroOcc	AltConf
4	A	1	Total	C	O	0	0
			4	2	2		
4	A	1	Total	C	O	0	0
			4	2	2		
4	B	1	Total	C	O	0	0
			4	2	2		
4	B	1	Total	C	O	0	0
			4	2	2		

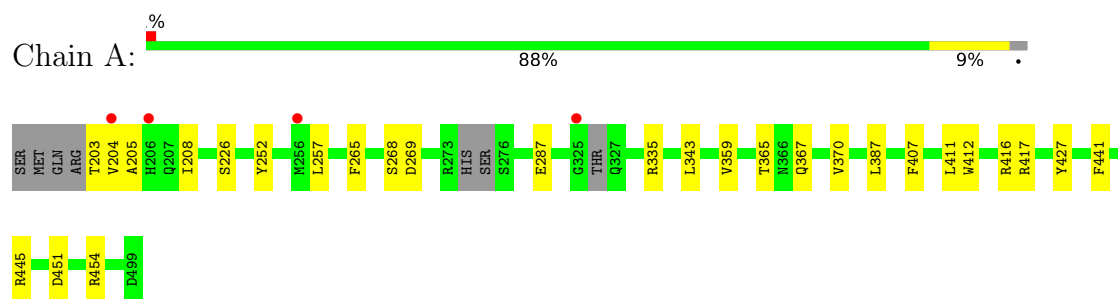
- Molecule 5 is water.

Mol	Chain	Residues	Atoms		ZeroOcc	AltConf
5	A	245	Total	O	0	0
			245	245		
5	B	224	Total	O	0	0
			224	224		

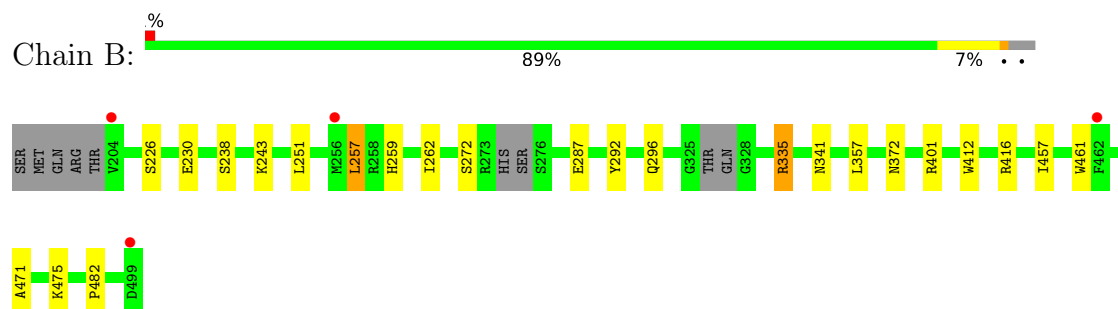
3 Residue-property plots [i](#)

These plots are drawn for all protein, RNA, DNA and oligosaccharide chains in the entry. The first graphic for a chain summarises the proportions of the various outlier classes displayed in the second graphic. The second graphic shows the sequence view annotated by issues in geometry and electron density. Residues are color-coded according to the number of geometric quality criteria for which they contain at least one outlier: green = 0, yellow = 1, orange = 2 and red = 3 or more. A red dot above a residue indicates a poor fit to the electron density ($RSRZ > 2$). Stretches of 2 or more consecutive residues without any outlier are shown as a green connector. Residues present in the sample, but not in the model, are shown in grey.

- Molecule 1: Activin receptor type-1



- Molecule 1: Activin receptor type-1



4 Data and refinement statistics

Property	Value	Source
Space group	P 21 21 2	Depositor
Cell constants a, b, c, α , β , γ	84.34Å 140.26Å 59.76Å 90.00° 90.00° 90.00°	Depositor
Resolution (Å)	46.10 – 1.80 46.06 – 1.80	Depositor EDS
% Data completeness (in resolution range)	99.6 (46.10-1.80) 99.7 (46.06-1.80)	Depositor EDS
R_{merge}	0.11	Depositor
R_{sym}	(Not available)	Depositor
$\langle I/\sigma(I) \rangle$ ¹	1.81 (at 1.81Å)	Xtriage
Refinement program	REFMAC 5.8.0257	Depositor
R, R_{free}	0.185 , 0.227 0.194 , 0.232	Depositor DCC
R_{free} test set	3302 reflections (5.00%)	wwPDB-VP
Wilson B-factor (Å ²)	27.5	Xtriage
Anisotropy	0.535	Xtriage
Bulk solvent k_{sol} (e/Å ³), B_{sol} (Å ²)	0.35 , 40.6	EDS
L-test for twinning ²	$\langle L \rangle = 0.49$, $\langle L^2 \rangle = 0.32$	Xtriage
Estimated twinning fraction	No twinning to report.	Xtriage
F_o, F_c correlation	0.96	EDS
Total number of atoms	5335	wwPDB-VP
Average B, all atoms (Å ²)	36.0	wwPDB-VP

Xtriage's analysis on translational NCS is as follows: *The analyses of the Patterson function reveals a significant off-origin peak that is 27.58 % of the origin peak, indicating pseudo-translational symmetry. The chance of finding a peak of this or larger height randomly in a structure without pseudo-translational symmetry is equal to 2.1430e-03. The detected translational NCS is most likely also responsible for the elevated intensity ratio.*

¹Intensities estimated from amplitudes.

²Theoretical values of $\langle |L| \rangle$, $\langle L^2 \rangle$ for acentric reflections are 0.5, 0.333 respectively for untwinned datasets, and 0.375, 0.2 for perfectly twinned datasets.

5 Model quality ⓘ

5.1 Standard geometry ⓘ

Bond lengths and bond angles in the following residue types are not validated in this section: EDO, FH0, SO4

The Z score for a bond length (or angle) is the number of standard deviations the observed value is removed from the expected value. A bond length (or angle) with $|Z| > 5$ is considered an outlier worth inspection. RMSZ is the root-mean-square of all Z scores of the bond lengths (or angles).

Mol	Chain	Bond lengths		Bond angles	
		RMSZ	# Z >5	RMSZ	# Z >5
1	A	0.86	1/2412 (0.0%)	0.99	5/3269 (0.2%)
1	B	0.85	0/2394	0.97	2/3245 (0.1%)
All	All	0.86	1/4806 (0.0%)	0.98	7/6514 (0.1%)

All (1) bond length outliers are listed below:

Mol	Chain	Res	Type	Atoms	Z	Observed(Å)	Ideal(Å)
1	A	287	GLU	CD-OE1	-6.86	1.18	1.25

All (7) bond angle outliers are listed below:

Mol	Chain	Res	Type	Atoms	Z	Observed(°)	Ideal(°)
1	A	417	ARG	NE-CZ-NH2	-6.47	117.06	120.30
1	B	335	ARG	NE-CZ-NH1	6.33	123.47	120.30
1	A	454	ARG	NE-CZ-NH2	-5.99	117.30	120.30
1	A	335	ARG	NE-CZ-NH1	5.25	122.93	120.30
1	B	341	ASN	CB-CA-C	5.21	120.81	110.40
1	A	445	ARG	CG-CD-NE	-5.17	100.94	111.80
1	A	343	LEU	CA-CB-CG	-5.08	103.63	115.30

There are no chirality outliers.

There are no planarity outliers.

5.2 Too-close contacts ⓘ

In the following table, the Non-H and H(model) columns list the number of non-hydrogen atoms and hydrogen atoms in the chain respectively. The H(added) column lists the number of hydrogen atoms added and optimized by MolProbity. The Clashes column lists the number of clashes within the asymmetric unit, whereas Symm-Clashes lists symmetry-related clashes.

Mol	Chain	Non-H	H(model)	H(added)	Clashes	Symm-Clashes
1	A	2355	0	2336	19	0
1	B	2340	0	2319	12	0
2	A	35	0	0	0	0
2	B	35	0	0	0	0
3	A	45	0	0	0	0
3	B	40	0	0	0	0
4	A	8	0	12	0	0
4	B	8	0	12	0	0
5	A	245	0	0	1	0
5	B	224	0	0	0	0
All	All	5335	0	4679	31	0

The all-atom clashscore is defined as the number of clashes found per 1000 atoms (including hydrogen atoms). The all-atom clashscore for this structure is 3.

All (31) close contacts within the same asymmetric unit are listed below, sorted by their clash magnitude.

Atom-1	Atom-2	Interatomic distance (Å)	Clash overlap (Å)
1:A:205:ALA:HB3	1:A:269:ASP:OD2	1.75	0.84
1:A:205:ALA:CB	1:A:269:ASP:OD2	2.26	0.84
1:A:205:ALA:HB3	1:A:269:ASP:CG	2.10	0.71
1:B:243:LYS:HD3	1:B:372:ASN:O	1.94	0.66
1:A:204:VAL:O	1:A:208:ILE:HG13	1.96	0.66
1:A:203:THR:HG22	1:A:204:VAL:H	1.63	0.62
1:A:205:ALA:CB	1:A:269:ASP:CG	2.66	0.62
1:A:205:ALA:HB2	1:A:269:ASP:CB	2.33	0.58
1:A:407:PHE:CZ	1:A:411:LEU:HD21	2.42	0.54
1:B:292:TYR:CE2	1:B:296:GLN:NE2	2.76	0.53
1:A:252:TYR:CD1	1:A:265:PHE:HB2	2.44	0.52
1:A:451:ASP:OD2	5:A:601:HOH:O	2.19	0.51
1:B:401:ARG:HD3	1:B:482:PRO:HB2	1.92	0.51
1:B:412:TRP:CZ2	1:B:416:ARG:HD2	2.46	0.50
1:A:203:THR:HG22	1:A:204:VAL:N	2.27	0.49
1:A:427:TYR:CD2	1:A:427:TYR:C	2.88	0.47
1:A:208:ILE:HA	1:A:226:SER:O	2.15	0.47
1:A:359:VAL:HG22	1:A:370:VAL:HA	1.97	0.47
1:B:471:ALA:O	1:B:475:LYS:HG3	2.15	0.47
1:A:365:THR:OG1	1:A:367:GLN:HG2	2.15	0.46
1:A:412:TRP:CZ2	1:A:416:ARG:HD2	2.49	0.46
1:B:335:ARG:HD3	1:B:357:LEU:O	2.15	0.45
1:B:226:SER:HA	1:B:230:GLU:O	2.17	0.44
1:B:259:HIS:HB3	1:B:262:ILE:HD12	2.00	0.43

Continued on next page...

Continued from previous page...

Atom-1	Atom-2	Interatomic distance (Å)	Clash overlap (Å)
1:A:205:ALA:HB2	1:A:269:ASP:HB3	2.01	0.43
1:B:457:ILE:HG23	1:B:461:TRP:CE3	2.54	0.43
1:B:257:LEU:HD23	1:B:257:LEU:HA	1.76	0.42
1:A:204:VAL:HG12	1:A:208:ILE:CD1	2.50	0.42
1:B:292:TYR:CZ	1:B:296:GLN:NE2	2.87	0.42
1:A:387:LEU:O	1:A:441:PHE:CE1	2.74	0.41
1:B:292:TYR:O	1:B:296:GLN:HG2	2.21	0.40

There are no symmetry-related clashes.

5.3 Torsion angles [i](#)

5.3.1 Protein backbone [i](#)

In the following table, the Percentiles column shows the percent Ramachandran outliers of the chain as a percentile score with respect to all X-ray entries followed by that with respect to entries of similar resolution.

The Analysed column shows the number of residues for which the backbone conformation was analysed, and the total number of residues.

Mol	Chain	Analysed	Favoured	Allowed	Outliers	Percentiles	
1	A	290/301 (96%)	285 (98%)	5 (2%)	0	100	100
1	B	287/301 (95%)	278 (97%)	9 (3%)	0	100	100
All	All	577/602 (96%)	563 (98%)	14 (2%)	0	100	100

There are no Ramachandran outliers to report.

5.3.2 Protein sidechains [i](#)

In the following table, the Percentiles column shows the percent sidechain outliers of the chain as a percentile score with respect to all X-ray entries followed by that with respect to entries of similar resolution.

The Analysed column shows the number of residues for which the sidechain conformation was analysed, and the total number of residues.

Mol	Chain	Analysed	Rotameric	Outliers	Percentiles	
1	A	259/270 (96%)	257 (99%)	2 (1%)	81	78

Continued on next page...

Continued from previous page...

Mol	Chain	Analysed	Rotameric	Outliers	Percentiles	
1	B	259/270 (96%)	254 (98%)	5 (2%)	57	46
All	All	518/540 (96%)	511 (99%)	7 (1%)	67	59

All (7) residues with a non-rotameric sidechain are listed below:

Mol	Chain	Res	Type
1	A	257	LEU
1	A	268	SER
1	B	238	SER
1	B	251	LEU
1	B	257	LEU
1	B	272	SER
1	B	287	GLU

Sometimes sidechains can be flipped to improve hydrogen bonding and reduce clashes. All (3) such sidechains are listed below:

Mol	Chain	Res	Type
1	A	284	HIS
1	A	318	HIS
1	A	421	ASN

5.3.3 RNA ⓘ

There are no RNA molecules in this entry.

5.4 Non-standard residues in protein, DNA, RNA chains ⓘ

There are no non-standard protein/DNA/RNA residues in this entry.

5.5 Carbohydrates ⓘ

There are no monosaccharides in this entry.

5.6 Ligand geometry ⓘ

23 ligands are modelled in this entry.

In the following table, the Counts columns list the number of bonds (or angles) for which Mogul statistics could be retrieved, the number of bonds (or angles) that are observed in the model and the number of bonds (or angles) that are defined in the Chemical Component Dictionary. The Link column lists molecule types, if any, to which the group is linked. The Z score for a bond length (or angle) is the number of standard deviations the observed value is removed from the expected value. A bond length (or angle) with $|Z| > 2$ is considered an outlier worth inspection. RMSZ is the root-mean-square of all Z scores of the bond lengths (or angles).

Mol	Type	Chain	Res	Link	Bond lengths			Bond angles		
					Counts	RMSZ	# Z > 2	Counts	RMSZ	# Z > 2
3	SO4	A	502	-	4,4,4	0.42	0	6,6,6	0.23	0
2	FH0	B	501	-	39,40,40	2.39	15 (38%)	49,56,56	2.77	11 (22%)
3	SO4	B	509	-	4,4,4	0.34	0	6,6,6	0.16	0
3	SO4	B	505	-	4,4,4	0.30	0	6,6,6	0.26	0
3	SO4	B	511	-	4,4,4	0.37	0	6,6,6	0.09	0
3	SO4	A	511	-	4,4,4	0.32	0	6,6,6	0.06	0
3	SO4	A	507	-	4,4,4	0.34	0	6,6,6	0.10	0
3	SO4	B	502	-	4,4,4	0.40	0	6,6,6	0.26	0
4	EDO	B	504	-	3,3,3	0.07	0	2,2,2	0.18	0
3	SO4	A	512	-	4,4,4	0.32	0	6,6,6	0.10	0
3	SO4	B	506	-	4,4,4	0.26	0	6,6,6	0.10	0
3	SO4	A	510	-	4,4,4	0.37	0	6,6,6	0.12	0
4	EDO	A	503	-	3,3,3	0.16	0	2,2,2	0.16	0
4	EDO	A	504	-	3,3,3	0.08	0	2,2,2	0.22	0
3	SO4	B	507	-	4,4,4	0.38	0	6,6,6	0.15	0
3	SO4	A	506	-	4,4,4	0.36	0	6,6,6	0.17	0
3	SO4	B	510	-	4,4,4	0.38	0	6,6,6	0.06	0
3	SO4	A	508	-	4,4,4	0.33	0	6,6,6	0.09	0
3	SO4	A	505	-	4,4,4	0.43	0	6,6,6	0.15	0
2	FH0	A	501	-	39,40,40	2.68	12 (30%)	49,56,56	2.91	17 (34%)
3	SO4	A	509	-	4,4,4	0.32	0	6,6,6	0.13	0
4	EDO	B	503	-	3,3,3	0.25	0	2,2,2	0.31	0
3	SO4	B	508	-	4,4,4	0.35	0	6,6,6	0.06	0

In the following table, the Chirals column lists the number of chiral outliers, the number of chiral centers analysed, the number of these observed in the model and the number defined in the Chemical Component Dictionary. Similar counts are reported in the Torsion and Rings columns. '-' means no outliers of that kind were identified.

Mol	Type	Chain	Res	Link	Chirals	Torsions	Rings
2	FH0	A	501	-	-	4/14/33/33	0/5/6/6
2	FH0	B	501	-	-	3/14/33/33	0/5/6/6
4	EDO	A	504	-	-	1/1/1/1	-
4	EDO	B	503	-	-	0/1/1/1	-

Continued on next page...

Continued from previous page...

Mol	Type	Chain	Res	Link	Chirals	Torsions	Rings
4	EDO	B	504	-	-	1/1/1/1	-
4	EDO	A	503	-	-	1/1/1/1	-

All (27) bond length outliers are listed below:

Mol	Chain	Res	Type	Atoms	Z	Observed(Å)	Ideal(Å)
2	A	501	FH0	C28-C27	-8.89	1.39	1.49
2	A	501	FH0	C06-N05	-7.84	1.34	1.46
2	A	501	FH0	C03-N02	-5.44	1.34	1.46
2	B	501	FH0	C03-N02	-5.35	1.34	1.46
2	B	501	FH0	C27-N26	4.65	1.39	1.35
2	B	501	FH0	C04-N05	-4.47	1.39	1.46
2	B	501	FH0	C19-C17	-4.25	1.45	1.50
2	B	501	FH0	C19-C27	4.16	1.47	1.41
2	B	501	FH0	C28-C27	-3.80	1.44	1.49
2	B	501	FH0	C10-C11	3.63	1.45	1.39
2	A	501	FH0	C19-C17	3.36	1.53	1.50
2	A	501	FH0	C04-C03	-3.28	1.39	1.51
2	B	501	FH0	C09-C08	3.24	1.45	1.39
2	B	501	FH0	C06-N05	-3.20	1.41	1.46
2	A	501	FH0	C17-N18	3.16	1.39	1.34
2	B	501	FH0	C07-C06	-3.08	1.39	1.51
2	A	501	FH0	O22-C21	-2.99	1.35	1.42
2	A	501	FH0	C19-C27	2.83	1.45	1.41
2	B	501	FH0	C07-N02	-2.80	1.40	1.46
2	B	501	FH0	C04-C03	-2.78	1.40	1.51
2	A	501	FH0	C07-C06	-2.69	1.41	1.51
2	B	501	FH0	C34-C11	2.63	1.43	1.39
2	A	501	FH0	C13-N14	2.55	1.38	1.34
2	B	501	FH0	C13-N14	2.51	1.38	1.34
2	A	501	FH0	C33-C28	2.21	1.43	1.39
2	A	501	FH0	C04-N05	-2.17	1.43	1.46
2	B	501	FH0	C21-C20	2.01	1.53	1.50

All (28) bond angle outliers are listed below:

Mol	Chain	Res	Type	Atoms	Z	Observed(°)	Ideal(°)
2	B	501	FH0	C07-N02-C03	8.91	121.98	109.52
2	A	501	FH0	C06-C07-N02	8.71	120.64	110.80
2	A	501	FH0	C07-N02-C03	8.37	121.23	109.52
2	B	501	FH0	C06-C07-N02	7.85	119.67	110.80
2	B	501	FH0	C04-C03-N02	7.20	118.94	110.80

Continued on next page...

Continued from previous page...

Mol	Chain	Res	Type	Atoms	Z	Observed(°)	Ideal(°)
2	A	501	FH0	C01-N02-C07	7.01	121.15	110.66
2	A	501	FH0	C03-C04-N05	6.11	122.56	110.70
2	A	501	FH0	C04-C03-N02	5.77	117.32	110.80
2	B	501	FH0	C01-N02-C07	5.75	119.27	110.66
2	B	501	FH0	C01-N02-C03	5.24	118.49	110.66
2	B	501	FH0	C03-C04-N05	5.17	120.74	110.70
2	A	501	FH0	C01-N02-C03	4.57	117.49	110.66
2	B	501	FH0	C21-C20-C19	4.28	135.82	128.44
2	B	501	FH0	C07-C06-N05	4.15	118.75	110.70
2	A	501	FH0	C07-C06-N05	4.08	118.63	110.70
2	A	501	FH0	N14-C13-N18	-3.82	122.93	126.55
2	B	501	FH0	C06-N05-C04	3.49	119.22	111.52
2	A	501	FH0	C21-C20-C19	3.45	134.39	128.44
2	A	501	FH0	C06-N05-C04	3.45	119.13	111.52
2	B	501	FH0	N14-C13-N18	-3.35	123.37	126.55
2	A	501	FH0	C06-N05-C08	3.31	127.04	118.09
2	A	501	FH0	C15-N14-C13	3.19	118.28	115.45
2	A	501	FH0	C31-N32-C33	2.68	121.48	116.85
2	A	501	FH0	C09-C10-C11	2.33	122.99	120.30
2	A	501	FH0	C35-C08-N05	-2.23	118.31	121.38
2	A	501	FH0	C30-C29-C28	2.13	123.24	120.56
2	B	501	FH0	C17-N18-C13	2.10	118.42	116.69
2	A	501	FH0	C34-C11-C10	-2.02	116.27	119.03

There are no chirality outliers.

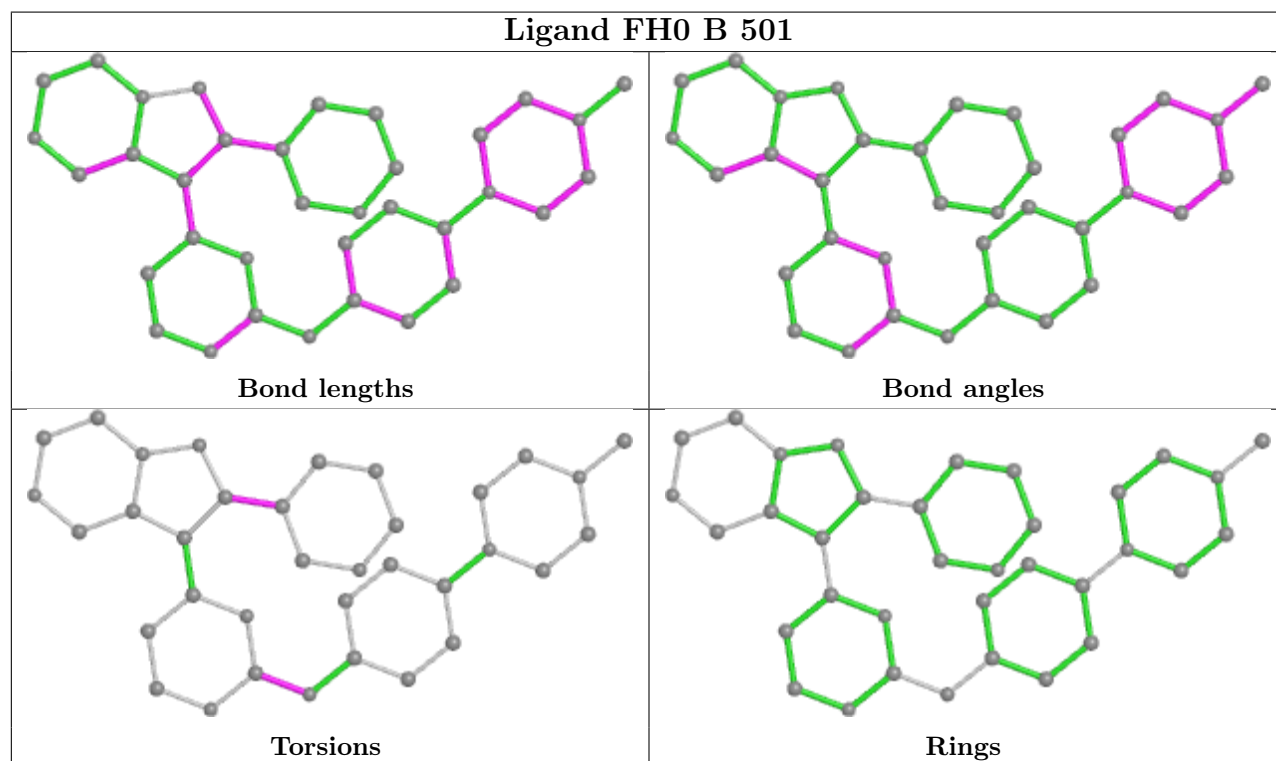
All (10) torsion outliers are listed below:

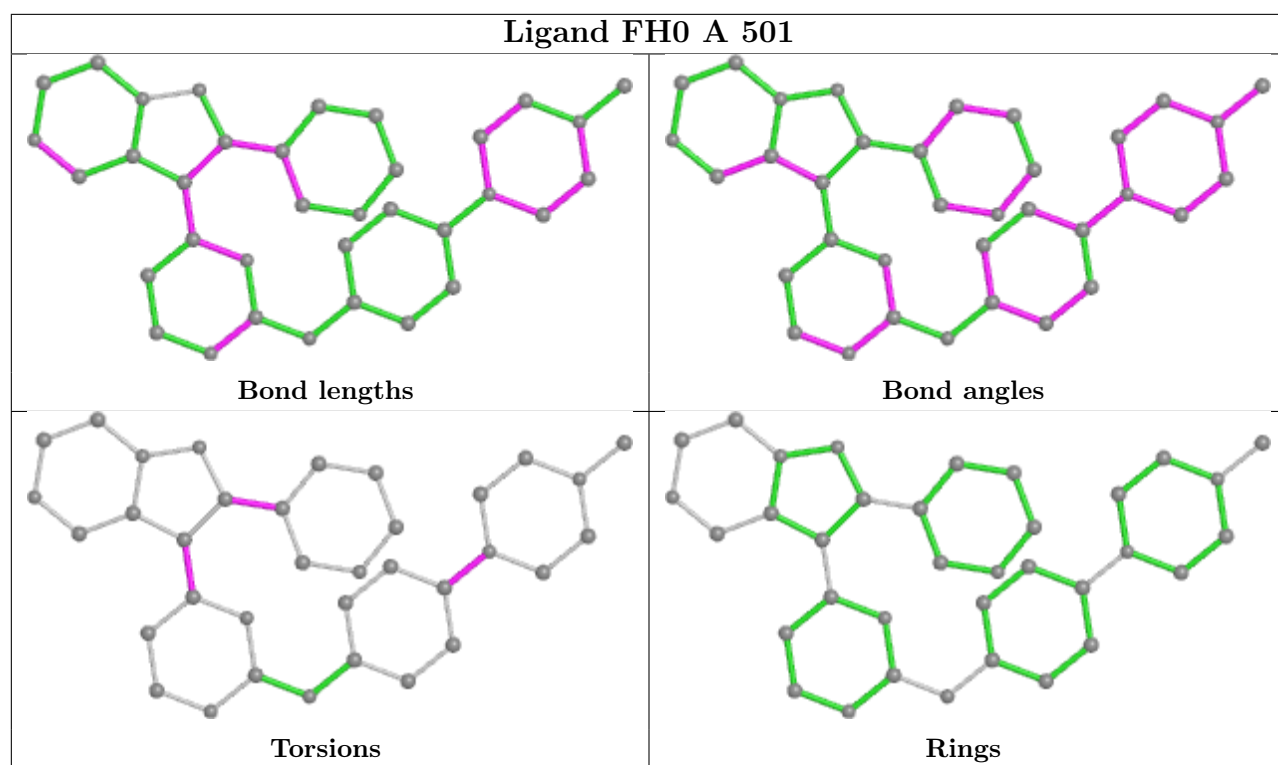
Mol	Chain	Res	Type	Atoms
2	A	501	FH0	C16-C17-C19-C20
4	B	504	EDO	O1-C1-C2-O2
2	A	501	FH0	N26-C27-C28-C29
2	B	501	FH0	N14-C13-N12-C11
4	A	504	EDO	O1-C1-C2-O2
2	B	501	FH0	N18-C13-N12-C11
2	B	501	FH0	N26-C27-C28-C29
2	A	501	FH0	N26-C27-C28-C33
4	A	503	EDO	O1-C1-C2-O2
2	A	501	FH0	C09-C08-N05-C04

There are no ring outliers.

No monomer is involved in short contacts.

The following is a two-dimensional graphical depiction of Mogul quality analysis of bond lengths, bond angles, torsion angles, and ring geometry for all instances of the Ligand of Interest. In addition, ligands with molecular weight > 250 and outliers as shown on the validation Tables will also be included. For torsion angles, if less than 5% of the Mogul distribution of torsion angles is within 10 degrees of the torsion angle in question, then that torsion angle is considered an outlier. Any bond that is central to one or more torsion angles identified as an outlier by Mogul will be highlighted in the graph. For rings, the root-mean-square deviation (RMSD) between the ring in question and similar rings identified by Mogul is calculated over all ring torsion angles. If the average RMSD is greater than 60 degrees and the minimal RMSD between the ring in question and any Mogul-identified rings is also greater than 60 degrees, then that ring is considered an outlier. The outliers are highlighted in purple. The color gray indicates Mogul did not find sufficient equivalents in the CSD to analyse the geometry.





5.7 Other polymers [i](#)

There are no such residues in this entry.

5.8 Polymer linkage issues [i](#)

There are no chain breaks in this entry.

6 Fit of model and data [i](#)

6.1 Protein, DNA and RNA chains [i](#)

In the following table, the column labelled ‘#RSRZ> 2’ contains the number (and percentage) of RSRZ outliers, followed by percent RSRZ outliers for the chain as percentile scores relative to all X-ray entries and entries of similar resolution. The OWAB column contains the minimum, median, 95th percentile and maximum values of the occupancy-weighted average B-factor per residue. The column labelled ‘Q< 0.9’ lists the number of (and percentage) of residues with an average occupancy less than 0.9.

Mol	Chain	Analysed	<RSRZ>	#RSRZ>2	OWAB(Å ²)	Q<0.9
1	A	294/301 (97%)	-0.17	4 (1%) 75 72	20, 31, 53, 72	0
1	B	292/301 (97%)	-0.08	4 (1%) 75 72	20, 33, 54, 80	0
All	All	586/602 (97%)	-0.13	8 (1%) 75 72	20, 32, 54, 80	0

All (8) RSRZ outliers are listed below:

Mol	Chain	Res	Type	RSRZ
1	A	204	VAL	3.6
1	A	256	MET	3.6
1	B	256	MET	3.5
1	A	206	HIS	3.1
1	A	325	GLY	2.9
1	B	462	PHE	2.2
1	B	499	ASP	2.1
1	B	204	VAL	2.1

6.2 Non-standard residues in protein, DNA, RNA chains [i](#)

There are no non-standard protein/DNA/RNA residues in this entry.

6.3 Carbohydrates [i](#)

There are no monosaccharides in this entry.

6.4 Ligands [i](#)

In the following table, the Atoms column lists the number of modelled atoms in the group and the number defined in the chemical component dictionary. The B-factors column lists the minimum,

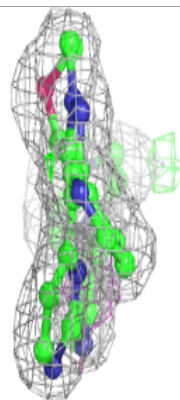
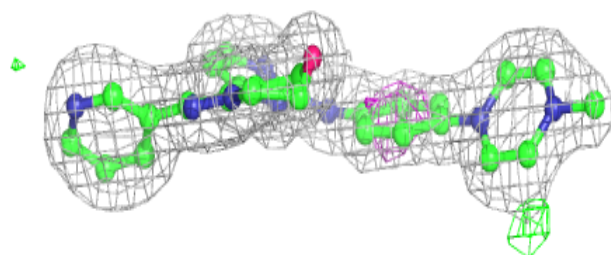
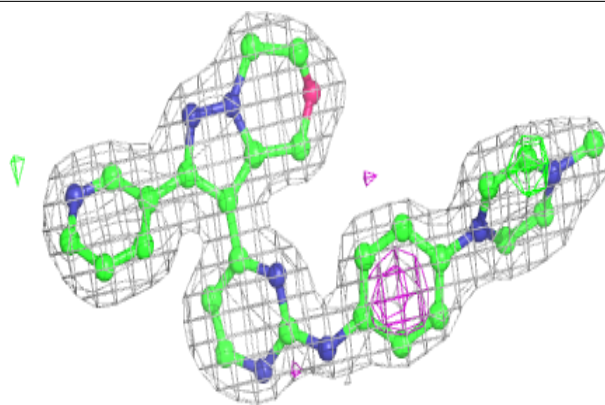
median, 95th percentile and maximum values of B factors of atoms in the group. The column labelled 'Q< 0.9' lists the number of atoms with occupancy less than 0.9.

Mol	Type	Chain	Res	Atoms	RSCC	RSR	B-factors(Å ²)	Q<0.9
3	SO4	A	508	5/5	0.64	0.49	92,94,119,120	0
3	SO4	B	511	5/5	0.65	0.31	88,99,106,109	0
4	EDO	A	504	4/4	0.70	0.14	55,61,62,62	0
3	SO4	A	507	5/5	0.74	0.36	91,98,110,115	0
3	SO4	B	508	5/5	0.77	0.30	86,87,95,99	0
3	SO4	A	510	5/5	0.81	0.27	70,82,87,92	0
3	SO4	B	510	5/5	0.81	0.45	123,125,132,134	0
3	SO4	B	509	5/5	0.83	0.25	73,73,77,79	0
3	SO4	A	511	5/5	0.85	0.32	66,87,93,97	0
4	EDO	B	504	4/4	0.88	0.12	56,58,58,60	0
3	SO4	A	512	5/5	0.90	0.16	64,72,76,83	0
3	SO4	A	509	5/5	0.92	0.15	53,62,72,76	0
3	SO4	B	505	5/5	0.92	0.16	44,52,56,56	0
2	FH0	B	501	35/35	0.94	0.10	25,29,34,35	0
2	FH0	A	501	35/35	0.95	0.10	20,23,41,42	0
3	SO4	B	507	5/5	0.96	0.15	59,60,69,70	0
4	EDO	B	503	4/4	0.97	0.11	32,32,32,34	0
3	SO4	B	506	5/5	0.97	0.12	46,46,47,51	0
4	EDO	A	503	4/4	0.98	0.07	36,41,42,44	0
3	SO4	A	505	5/5	0.98	0.06	34,36,43,44	0
3	SO4	A	506	5/5	0.98	0.09	37,38,41,45	0
3	SO4	A	502	5/5	0.98	0.12	41,44,48,50	0
3	SO4	B	502	5/5	0.99	0.07	29,29,31,32	0

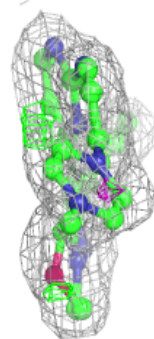
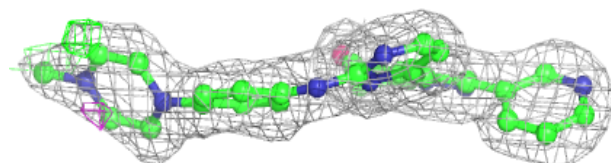
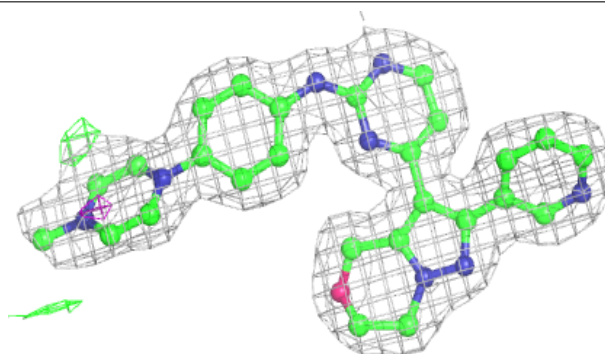
The following is a graphical depiction of the model fit to experimental electron density of all instances of the Ligand of Interest. In addition, ligands with molecular weight > 250 and outliers as shown on the geometry validation Tables will also be included. Each fit is shown from different orientation to approximate a three-dimensional view.

Electron density around FH0 B 501:

$2mF_o-DF_c$ (at 0.7 rmsd) in gray
 mF_o-DF_c (at 3 rmsd) in purple (negative)
and green (positive)

**Electron density around FH0 A 501:**

$2mF_o-DF_c$ (at 0.7 rmsd) in gray
 mF_o-DF_c (at 3 rmsd) in purple (negative)
and green (positive)



6.5 Other polymers [i](#)

There are no such residues in this entry.