



# Full wwPDB X-ray Structure Validation Report ⓘ

Sep 15, 2020 – 08:56 PM JST

PDB ID : 7C3J  
Title : Structure of L-lysine oxidase D212A/D315A in complex with L-phenylalanine  
Authors : Kitagawa, M.; Matsumoto, Y.; Inagaki, K.; Imada, K.  
Deposited on : 2020-05-12  
Resolution : 2.20 Å(reported)

This is a Full wwPDB X-ray Structure Validation Report for a publicly released PDB entry.

We welcome your comments at [validation@mail.wwpdb.org](mailto:validation@mail.wwpdb.org)

A user guide is available at

<https://www.wwpdb.org/validation/2017/XrayValidationReportHelp>

with specific help available everywhere you see the ⓘ symbol.

---

The following versions of software and data (see [references ⓘ](#)) were used in the production of this report:

MolProbity : 4.02b-467  
Mogul : 1.8.5 (274361), CSD as541be (2020)  
Xtriage (Phenix) : 1.13  
EDS : 2.14.4  
buster-report : 1.1.7 (2018)  
Percentile statistics : 20191225.v01 (using entries in the PDB archive December 25th 2019)  
Refmac : 5.8.0158  
CCP4 : 7.0.044 (Gargrove)  
Ideal geometry (proteins) : Engh & Huber (2001)  
Ideal geometry (DNA, RNA) : Parkinson et al. (1996)  
Validation Pipeline (wwPDB-VP) : 2.14.4



Mol	Type	Chain	Res	Chirality	Geometry	Clashes	Electron density
3	PHE	A	602	-	-	X	-

## 2 Entry composition [i](#)

There are 6 unique types of molecules in this entry. The entry contains 8898 atoms, of which 0 are hydrogens and 0 are deuteriums.

In the tables below, the ZeroOcc column contains the number of atoms modelled with zero occupancy, the AltConf column contains the number of residues with at least one atom in alternate conformation and the Trace column contains the number of residues modelled with at most 2 atoms.

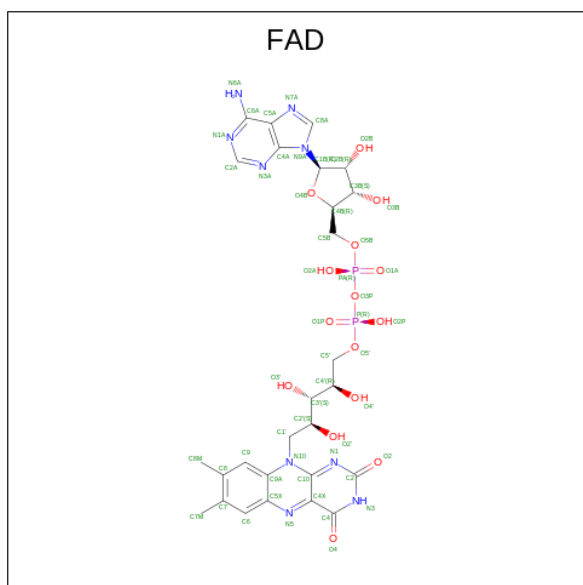
- Molecule 1 is a protein called L-lysine oxidase.

Mol	Chain	Residues	Atoms					ZeroOcc	AltConf	Trace
1	A	509	Total	C	N	O	S	0	1	0
			4042	2596	662	762	22			
1	B	509	Total	C	N	O	S	0	2	0
			4045	2598	662	763	22			

There are 4 discrepancies between the modelled and reference sequences:

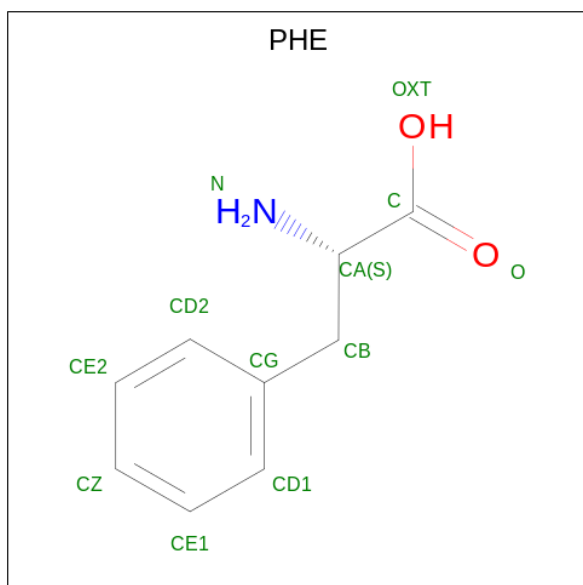
Chain	Residue	Modelled	Actual	Comment	Reference
A	212	ALA	ASP	engineered mutation	UNP A0A0J9X1X3
A	315	ALA	ASP	engineered mutation	UNP A0A0J9X1X3
B	212	ALA	ASP	engineered mutation	UNP A0A0J9X1X3
B	315	ALA	ASP	engineered mutation	UNP A0A0J9X1X3

- Molecule 2 is FLAVIN-ADENINE DINUCLEOTIDE (three-letter code: FAD) (formula:  $C_{27}H_{33}N_9O_{15}P_2$ ).



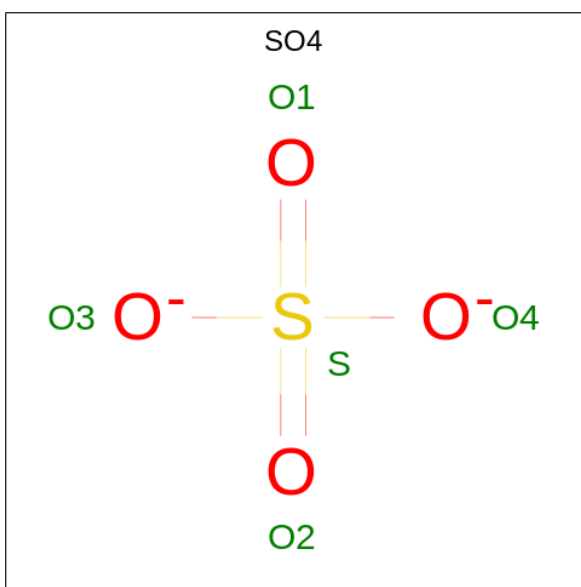
Mol	Chain	Residues	Atoms					ZeroOcc	AltConf
2	A	1	Total	C	N	O	P	0	0
			53	27	9	15	2		
2	B	1	Total	C	N	O	P	0	0
			53	27	9	15	2		

- Molecule 3 is PHENYLALANINE (three-letter code: PHE) (formula:  $C_9H_{11}NO_2$ ) (labeled as "Ligand of Interest" by author).



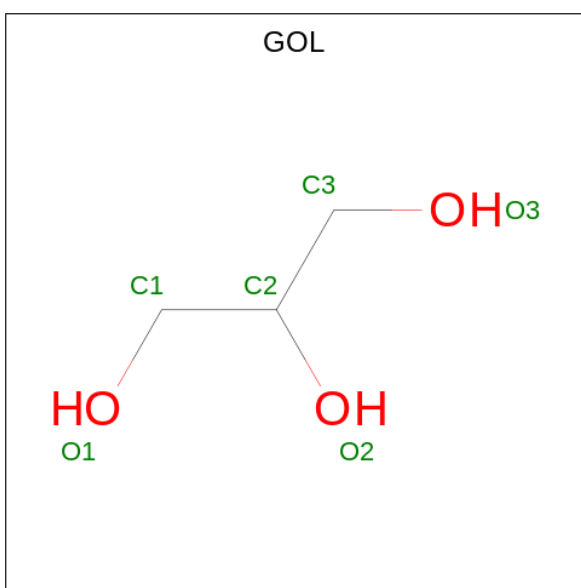
Mol	Chain	Residues	Atoms				ZeroOcc	AltConf
3	A	1	Total	C	N	O	0	0
			12	9	1	2		
3	B	1	Total	C	N	O	0	0
			12	9	1	2		

- Molecule 4 is SULFATE ION (three-letter code: SO<sub>4</sub>) (formula:  $O_4S$ ).



Mol	Chain	Residues	Atoms			ZeroOcc	AltConf
4	A	1	Total	O	S	0	0
			5	4	1		
4	B	1	Total	O	S	0	0
			5	4	1		

- Molecule 5 is GLYCEROL (three-letter code: GOL) (formula: C<sub>3</sub>H<sub>8</sub>O<sub>3</sub>).



Mol	Chain	Residues	Atoms			ZeroOcc	AltConf
5	A	1	Total	C	O	0	0
			6	3	3		
5	A	1	Total	C	O	0	0
			6	3	3		

*Continued on next page...*

*Continued from previous page...*

Mol	Chain	Residues	Atoms			ZeroOcc	AltConf
5	B	1	Total	C	O	0	0
			6	3	3		
5	B	1	Total	C	O	0	0
			6	3	3		

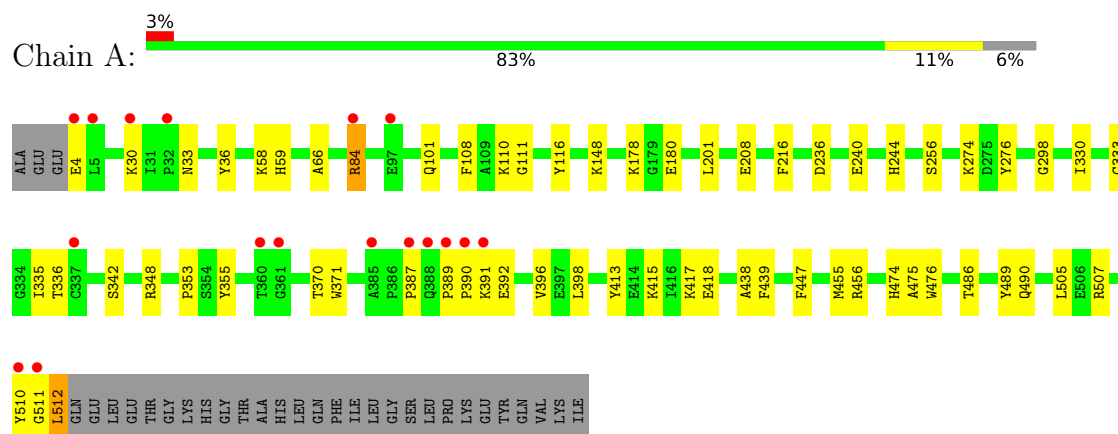
- Molecule 6 is water.

Mol	Chain	Residues	Atoms		ZeroOcc	AltConf
6	A	332	Total	O	0	0
			332	332		
6	B	315	Total	O	0	0
			315	315		

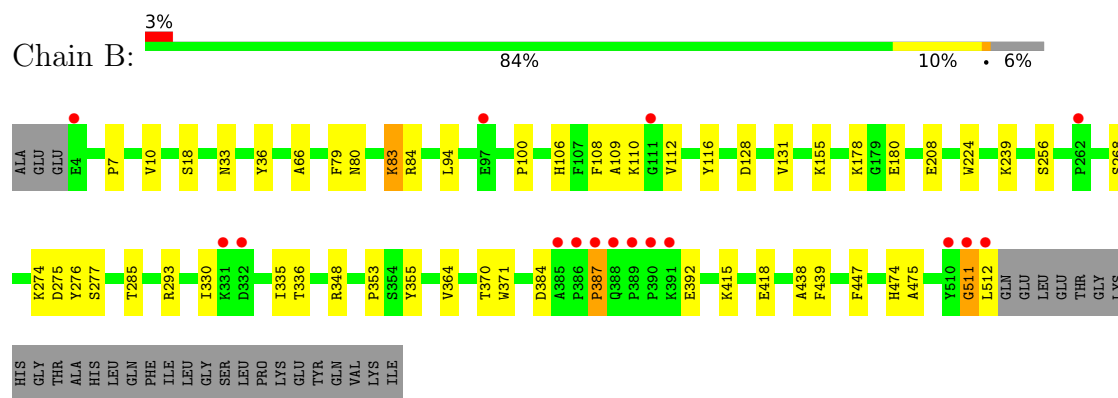
### 3 Residue-property plots [i](#)

These plots are drawn for all protein, RNA, DNA and oligosaccharide chains in the entry. The first graphic for a chain summarises the proportions of the various outlier classes displayed in the second graphic. The second graphic shows the sequence view annotated by issues in geometry and electron density. Residues are color-coded according to the number of geometric quality criteria for which they contain at least one outlier: green = 0, yellow = 1, orange = 2 and red = 3 or more. A red dot above a residue indicates a poor fit to the electron density ( $RSRZ > 2$ ). Stretches of 2 or more consecutive residues without any outlier are shown as a green connector. Residues present in the sample, but not in the model, are shown in grey.

- Molecule 1: L-lysine oxidase



- Molecule 1: L-lysine oxidase





## 4 Data and refinement statistics

Property	Value	Source
Space group	C 2 2 21	Depositor
Cell constants a, b, c, $\alpha$ , $\beta$ , $\gamma$	114.92Å 169.68Å 118.53Å 90.00° 90.00° 90.00°	Depositor
Resolution (Å)	68.99 – 2.20 68.99 – 2.20	Depositor EDS
% Data completeness (in resolution range)	98.8 (68.99-2.20) 98.8 (68.99-2.20)	Depositor EDS
$R_{merge}$	0.10	Depositor
$R_{sym}$	(Not available)	Depositor
$\langle I/\sigma(I) \rangle$ <sup>1</sup>	3.22 (at 2.20Å)	Xtrriage
Refinement program	PHENIX 1.15.2_3472	Depositor
R, $R_{free}$	0.186 , 0.236 0.186 , 0.235	Depositor DCC
$R_{free}$ test set	3004 reflections (5.16%)	wwPDB-VP
Wilson B-factor (Å <sup>2</sup> )	20.5	Xtrriage
Anisotropy	0.282	Xtrriage
Bulk solvent $k_{sol}$ (e/Å <sup>3</sup> ), $B_{sol}$ (Å <sup>2</sup> )	0.35 , 45.0	EDS
L-test for twinning <sup>2</sup>	$\langle  L  \rangle = 0.51$ , $\langle L^2 \rangle = 0.34$	Xtrriage
Estimated twinning fraction	No twinning to report.	Xtrriage
$F_o, F_c$ correlation	0.96	EDS
Total number of atoms	8898	wwPDB-VP
Average B, all atoms (Å <sup>2</sup> )	23.0	wwPDB-VP

Xtrriage's analysis on translational NCS is as follows: *The analyses of the Patterson function reveals a significant off-origin peak that is 55.89 % of the origin peak, indicating pseudo-translational symmetry. The chance of finding a peak of this or larger height randomly in a structure without pseudo-translational symmetry is equal to 2.9638e-05. The detected translational NCS is most likely also responsible for the elevated intensity ratio.*

<sup>1</sup>Intensities estimated from amplitudes.

<sup>2</sup>Theoretical values of  $\langle |L| \rangle$ ,  $\langle L^2 \rangle$  for acentric reflections are 0.5, 0.333 respectively for untwinned datasets, and 0.375, 0.2 for perfectly twinned datasets.

## 5 Model quality [i](#)

### 5.1 Standard geometry [i](#)

Bond lengths and bond angles in the following residue types are not validated in this section: GOL, SO4, FAD

The Z score for a bond length (or angle) is the number of standard deviations the observed value is removed from the expected value. A bond length (or angle) with  $|Z| > 5$  is considered an outlier worth inspection. RMSZ is the root-mean-square of all Z scores of the bond lengths (or angles).

Mol	Chain	Bond lengths		Bond angles	
		RMSZ	$\# Z  > 5$	RMSZ	$\# Z  > 5$
1	A	0.27	0/4157	0.47	0/5648
1	B	0.27	0/4163	0.46	0/5656
All	All	0.27	0/8320	0.46	0/11304

Chiral center outliers are detected by calculating the chiral volume of a chiral center and verifying if the center is modelled as a planar moiety or with the opposite hand. A planarity outlier is detected by checking planarity of atoms in a peptide group, atoms in a mainchain group or atoms of a sidechain that are expected to be planar.

Mol	Chain	#Chirality outliers	#Planarity outliers
1	B	0	1

There are no bond length outliers.

There are no bond angle outliers.

There are no chirality outliers.

All (1) planarity outliers are listed below:

Mol	Chain	Res	Type	Group
1	B	511	GLY	Peptide

### 5.2 Too-close contacts [i](#)

In the following table, the Non-H and H(model) columns list the number of non-hydrogen atoms and hydrogen atoms in the chain respectively. The H(added) column lists the number of hydrogen atoms added and optimized by MolProbity. The Clashes column lists the number of clashes within the asymmetric unit, whereas Symm-Clashes lists symmetry related clashes.

Mol	Chain	Non-H	H(model)	H(added)	Clashes	Symm-Clashes
1	A	4042	0	3902	46	1
1	B	4045	0	3907	38	1
2	A	53	0	31	4	0
2	B	53	0	31	3	0
3	A	12	0	8	6	0
3	B	12	0	8	4	0
4	A	5	0	0	0	0
4	B	5	0	0	0	0
5	A	12	0	16	1	0
5	B	12	0	16	2	0
6	A	332	0	0	5	0
6	B	315	0	0	2	0
All	All	8898	0	7919	83	1

The all-atom clashscore is defined as the number of clashes found per 1000 atoms (including hydrogen atoms). The all-atom clashscore for this structure is 5.

All (83) close contacts within the same asymmetric unit are listed below, sorted by their clash magnitude.

Atom-1	Atom-2	Interatomic distance (Å)	Clash overlap (Å)
1:A:216:PHE:HE2	3:A:602:PHE:CE1	1.92	0.88
1:A:148:LYS:NZ	6:A:702:HOH:O	2.21	0.73
1:A:216:PHE:HE2	3:A:602:PHE:CD1	2.07	0.72
1:A:418:GLU:OE2	6:A:701:HOH:O	2.09	0.70
1:B:418:GLU:OE2	6:B:701:HOH:O	2.08	0.70
1:B:387:PRO:HG2	1:B:392:GLU:HG3	1.74	0.70
1:B:178:LYS:HG3	1:B:180:GLU:HG3	1.74	0.69
1:A:216:PHE:CE2	3:A:602:PHE:CE1	2.81	0.67
1:A:455:MET:HA	1:A:455:MET:HE2	1.79	0.65
1:A:456:ARG:NH2	6:A:706:HOH:O	2.33	0.62
1:B:475:ALA:HB1	3:B:602:PHE:HB3	1.82	0.61
1:B:274:LYS:HD2	1:B:276:TYR:CE1	2.36	0.60
1:A:391:LYS:HG3	1:A:392:GLU:N	2.16	0.59
1:A:66:ALA:HA	2:A:601:FAD:C4X	2.32	0.59
1:B:66:ALA:HA	2:B:601:FAD:C4X	2.33	0.59
1:A:330:ILE:HG23	1:A:336:THR:HG22	1.84	0.58
1:B:371:TRP:CH2	3:B:602:PHE:CE2	2.91	0.58
1:A:507:ARG:O	1:A:511:GLY:HA3	2.05	0.57
1:B:371:TRP:CZ2	3:B:602:PHE:CD2	2.93	0.56
1:A:178:LYS:HG3	1:A:180:GLU:HG3	1.86	0.56
1:B:83:LYS:NZ	5:B:605:GOL:H31	2.21	0.55
1:A:348:ARG:HB2	1:A:370:THR:HG22	1.90	0.54

*Continued on next page...*

*Continued from previous page...*

Atom-1	Atom-2	Interatomic distance (Å)	Clash overlap (Å)
1:A:216:PHE:CE2	3:A:602:PHE:CD1	2.92	0.54
1:B:330:ILE:HG23	1:B:336:THR:HG22	1.89	0.54
1:B:84:ARG:CG	1:B:512:LEU:HB3	2.39	0.54
1:B:18[A]:SER:OG	1:B:285:THR:HB	2.08	0.53
1:A:438:ALA:HB1	2:A:601:FAD:HM83	1.91	0.53
1:B:415:LYS:HA	1:B:418:GLU:HG3	1.90	0.53
1:A:333:CYS:HB2	1:A:335:ILE:HD12	1.89	0.53
1:B:83:LYS:HZ1	5:B:605:GOL:H31	1.74	0.52
1:B:268:SER:HB3	1:B:277:SER:HB3	1.91	0.52
1:A:475:ALA:HB3	3:A:602:PHE:CD2	2.45	0.52
1:A:390:PRO:HB3	1:A:396:VAL:HG11	1.92	0.51
1:B:79:PHE:HD2	6:B:766:HOH:O	1.92	0.51
1:B:371:TRP:CZ2	3:B:602:PHE:CE2	2.98	0.51
1:B:348:ARG:HB2	1:B:370:THR:HG22	1.92	0.51
1:A:66:ALA:HA	2:A:601:FAD:N5	2.26	0.51
1:B:208:GLU:OE2	1:B:474:HIS:HD2	1.93	0.51
1:B:94:LEU:HD22	1:B:224:TRP:CE2	2.45	0.51
1:B:108:PHE:HB2	1:B:116:TYR:OH	2.10	0.50
1:A:110:LYS:HD3	1:A:111:GLY:N	2.27	0.50
1:A:208:GLU:OE2	1:A:474:HIS:HD2	1.94	0.50
1:A:58:LYS:HD2	1:A:59:HIS:CE1	2.48	0.49
1:A:236:ASP:O	1:A:240:GLU:HG3	2.13	0.49
1:B:66:ALA:HA	2:B:601:FAD:N5	2.27	0.49
1:A:108:PHE:HB2	1:A:116:TYR:OH	2.12	0.49
1:B:274:LYS:HD3	1:B:275:ASP:O	2.13	0.48
1:B:80:ASN:ND2	1:B:511:GLY:HA2	2.27	0.48
1:B:438:ALA:HB1	2:B:601:FAD:HM83	1.96	0.47
1:B:7:PRO:HA	1:B:33:ASN:HB3	1.97	0.47
1:A:415:LYS:O	1:A:418:GLU:HG3	2.14	0.47
1:A:30:LYS:HG3	6:A:845:HOH:O	2.13	0.47
1:A:455:MET:CA	1:A:455:MET:HE2	2.45	0.47
1:B:353:PRO:HB3	1:B:355:TYR:CE1	2.50	0.46
1:A:371:TRP:CH2	3:A:602:PHE:HD1	2.34	0.46
1:A:486:THR:O	1:A:490:GLN:HG3	2.16	0.46
1:A:256:SER:OG	1:A:298:GLY:HA3	2.17	0.45
1:A:387:PRO:HB2	1:A:392:GLU:OE1	2.16	0.45
1:B:84:ARG:NH1	1:B:512:LEU:O	2.50	0.44
1:B:109:ALA:O	1:B:112:VAL:HG12	2.17	0.44
1:B:84:ARG:HG3	1:B:512:LEU:HB3	2.01	0.43
1:A:201:LEU:HA	1:A:201:LEU:HD23	1.83	0.43
1:B:353:PRO:HG2	1:B:364:VAL:O	2.17	0.43

*Continued on next page...*

Continued from previous page...

Atom-1	Atom-2	Interatomic distance (Å)	Clash overlap (Å)
1:A:84:ARG:HG3	1:A:512:LEU:C	2.39	0.43
1:A:371:TRP:CE3	5:A:604:GOL:H12	2.54	0.43
1:A:4:GLU:OE1	1:A:33:ASN:ND2	2.51	0.42
1:A:58:LYS:HD2	1:A:59:HIS:NE2	2.34	0.42
1:A:476:TRP:HA	2:A:601:FAD:N1	2.34	0.42
1:A:274:LYS:HD3	1:A:276:TYR:CE1	2.54	0.42
1:A:389:PRO:HG2	1:A:391:LYS:CG	2.50	0.42
1:A:353:PRO:HB3	1:A:355:TYR:CE1	2.54	0.42
1:A:389:PRO:HB2	6:A:987:HOH:O	2.20	0.42
1:B:100:PRO:HD3	1:B:335:ILE:HD11	2.01	0.42
1:A:413:TYR:OH	1:A:417:LYS:NZ	2.38	0.41
1:A:36:TYR:CE1	1:A:244:HIS:HB2	2.55	0.41
1:A:101:GLN:OE1	1:A:342:SER:HB2	2.21	0.41
1:A:398:LEU:HD22	1:B:293:ARG:HD2	2.01	0.41
1:B:106:HIS:HB2	1:B:116:TYR:HA	2.03	0.41
1:B:128:ASP:O	1:B:131:VAL:HG12	2.20	0.41
1:B:415:LYS:HA	1:B:418:GLU:CG	2.51	0.41
1:B:10:VAL:O	1:B:36:TYR:HA	2.21	0.40
1:B:239:LYS:HE2	1:B:239:LYS:HB3	1.74	0.40
1:A:489:TYR:CE2	1:A:505:LEU:HD21	2.57	0.40

All (1) symmetry-related close contacts are listed below. The label for Atom-2 includes the symmetry operator and encoded unit-cell translations to be applied.

Atom-1	Atom-2	Interatomic distance (Å)	Clash overlap (Å)
1:A:510:TYR:OH	1:B:155:LYS:NZ[8_456]	2.07	0.13

## 5.3 Torsion angles

### 5.3.1 Protein backbone

In the following table, the Percentiles column shows the percent Ramachandran outliers of the chain as a percentile score with respect to all X-ray entries followed by that with respect to entries of similar resolution.

The Analysed column shows the number of residues for which the backbone conformation was analysed, and the total number of residues.

Mol	Chain	Analysed	Favoured	Allowed	Outliers	Percentiles
1	A	508/540 (94%)	491 (97%)	17 (3%)	0	<b>100</b> <b>100</b>

Continued on next page...

*Continued from previous page...*

Mol	Chain	Analysed	Favoured	Allowed	Outliers	Percentiles	
1	B	509/540 (94%)	491 (96%)	17 (3%)	1 (0%)	47	55
All	All	1017/1080 (94%)	982 (97%)	34 (3%)	1 (0%)	51	60

All (1) Ramachandran outliers are listed below:

Mol	Chain	Res	Type
1	B	387	PRO

### 5.3.2 Protein sidechains ⓘ

In the following table, the Percentiles column shows the percent sidechain outliers of the chain as a percentile score with respect to all X-ray entries followed by that with respect to entries of similar resolution.

The Analysed column shows the number of residues for which the sidechain conformation was analysed, and the total number of residues.

Mol	Chain	Analysed	Rotameric	Outliers	Percentiles	
1	A	429/454 (94%)	425 (99%)	4 (1%)	78	88
1	B	430/454 (95%)	424 (99%)	6 (1%)	67	80
All	All	859/908 (95%)	849 (99%)	10 (1%)	71	83

All (10) residues with a non-rotameric sidechain are listed below:

Mol	Chain	Res	Type
1	A	84	ARG
1	A	439	PHE
1	A	447	PHE
1	A	512	LEU
1	B	83	LYS
1	B	110	LYS
1	B	256	SER
1	B	384	ASP
1	B	439	PHE
1	B	447	PHE

Some sidechains can be flipped to improve hydrogen bonding and reduce clashes. There are no such sidechains identified.

### 5.3.3 RNA ⓘ

There are no RNA molecules in this entry.

## 5.4 Non-standard residues in protein, DNA, RNA chains ⓘ

There are no non-standard protein/DNA/RNA residues in this entry.

## 5.5 Carbohydrates ⓘ

There are no monosaccharides in this entry.

## 5.6 Ligand geometry ⓘ

10 ligands are modelled in this entry.

In the following table, the Counts columns list the number of bonds (or angles) for which Mogul statistics could be retrieved, the number of bonds (or angles) that are observed in the model and the number of bonds (or angles) that are defined in the Chemical Component Dictionary. The Link column lists molecule types, if any, to which the group is linked. The Z score for a bond length (or angle) is the number of standard deviations the observed value is removed from the expected value. A bond length (or angle) with  $|Z| > 2$  is considered an outlier worth inspection. RMSZ is the root-mean-square of all Z scores of the bond lengths (or angles).

Mol	Type	Chain	Res	Link	Bond lengths			Bond angles		
					Counts	RMSZ	$\# Z  > 2$	Counts	RMSZ	$\# Z  > 2$
4	SO4	A	603	-	4,4,4	0.14	0	6,6,6	0.05	0
4	SO4	B	603	-	4,4,4	0.14	0	6,6,6	0.05	0
5	GOL	B	605	-	5,5,5	0.84	0	5,5,5	0.98	0
3	PHE	A	602	-	9,12,12	0.47	0	10,15,15	0.58	0
5	GOL	A	604	-	5,5,5	0.87	0	5,5,5	0.98	0
2	FAD	B	601	-	51,58,58	1.21	5 (9%)	60,89,89	2.23	7 (11%)
2	FAD	A	601	-	51,58,58	1.21	5 (9%)	60,89,89	2.22	7 (11%)
5	GOL	B	604	-	5,5,5	0.86	0	5,5,5	0.97	0
3	PHE	B	602	-	9,12,12	0.82	0	10,15,15	0.49	0
5	GOL	A	605	-	5,5,5	0.93	0	5,5,5	1.00	0

In the following table, the Chirals column lists the number of chiral outliers, the number of chiral centers analysed, the number of these observed in the model and the number defined in the Chemical Component Dictionary. Similar counts are reported in the Torsion and Rings columns. '-' means no outliers of that kind were identified.

Mol	Type	Chain	Res	Link	Chirals	Torsions	Rings
5	GOL	B	605	-	-	2/4/4/4	-
3	PHE	A	602	-	-	2/4/8/8	0/1/1/1
5	GOL	A	604	-	-	3/4/4/4	-
2	FAD	B	601	-	-	4/30/50/50	0/6/6/6
2	FAD	A	601	-	-	3/30/50/50	0/6/6/6
5	GOL	B	604	-	-	2/4/4/4	-
3	PHE	B	602	-	-	0/4/8/8	0/1/1/1
5	GOL	A	605	-	-	4/4/4/4	-

All (10) bond length outliers are listed below:

Mol	Chain	Res	Type	Atoms	Z	Observed(Å)	Ideal(Å)
2	A	601	FAD	C4X-C10	5.50	1.44	1.38
2	B	601	FAD	C4X-C10	5.50	1.44	1.38
2	A	601	FAD	C4-N3	3.07	1.38	1.33
2	B	601	FAD	C4-N3	3.06	1.38	1.33
2	B	601	FAD	C4-C4X	2.34	1.45	1.41
2	A	601	FAD	C4-C4X	2.34	1.45	1.41
2	B	601	FAD	C9A-N10	2.17	1.41	1.38
2	A	601	FAD	C9A-N10	2.13	1.41	1.38
2	A	601	FAD	C5X-N5	2.10	1.38	1.35
2	B	601	FAD	C5X-N5	2.05	1.38	1.35

All (14) bond angle outliers are listed below:

Mol	Chain	Res	Type	Atoms	Z	Observed(°)	Ideal(°)
2	A	601	FAD	C4-N3-C2	12.96	126.08	115.14
2	B	601	FAD	C4-N3-C2	12.90	126.04	115.14
2	B	601	FAD	C4X-C4-N3	-7.08	113.75	123.43
2	A	601	FAD	C4X-C4-N3	-7.07	113.76	123.43
2	B	601	FAD	C10-C4X-N5	4.68	124.49	121.26
2	A	601	FAD	C10-C4X-N5	4.68	124.49	121.26
2	A	601	FAD	C4-C4X-C10	-3.77	117.45	119.95
2	B	601	FAD	C4-C4X-C10	-3.73	117.48	119.95
2	B	601	FAD	C4X-C10-N10	-3.46	116.75	120.30
2	A	601	FAD	C4X-C10-N10	-3.46	116.75	120.30
2	B	601	FAD	C1'-N10-C9A	3.11	120.74	118.29
2	A	601	FAD	C1'-N10-C9A	3.08	120.72	118.29
2	B	601	FAD	C5A-C6A-N6A	2.31	123.86	120.35
2	A	601	FAD	C5A-C6A-N6A	2.27	123.80	120.35



There are no chirality outliers.

All (20) torsion outliers are listed below:

Mol	Chain	Res	Type	Atoms
5	B	605	GOL	O1-C1-C2-C3
5	B	604	GOL	O1-C1-C2-C3
5	A	605	GOL	O1-C1-C2-C3
5	A	605	GOL	C1-C2-C3-O3
5	B	605	GOL	O1-C1-C2-O2
5	B	604	GOL	O1-C1-C2-O2
5	A	605	GOL	O1-C1-C2-O2
5	A	605	GOL	O2-C2-C3-O3
5	A	604	GOL	O1-C1-C2-O2
5	A	604	GOL	O2-C2-C3-O3
2	A	601	FAD	C2'-C3'-C4'-O4'
2	B	601	FAD	C2'-C3'-C4'-O4'
3	A	602	PHE	N-CA-CB-CG
5	A	604	GOL	C1-C2-C3-O3
3	A	602	PHE	C-CA-CB-CG
2	B	601	FAD	O4B-C4B-C5B-O5B
2	B	601	FAD	C5B-O5B-PA-O1A
2	B	601	FAD	C5'-O5'-P-O1P
2	A	601	FAD	C5B-O5B-PA-O1A
2	A	601	FAD	O4B-C4B-C5B-O5B

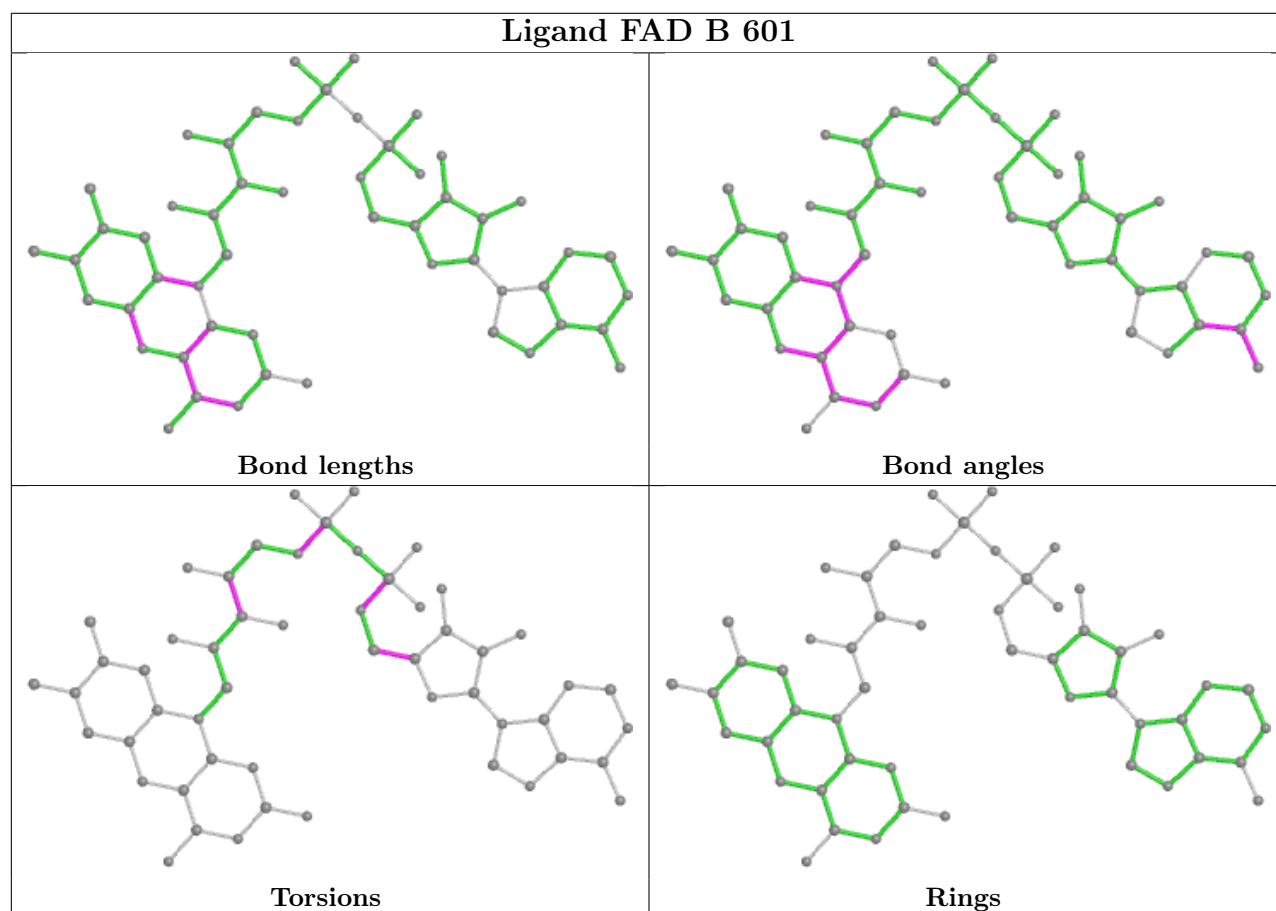
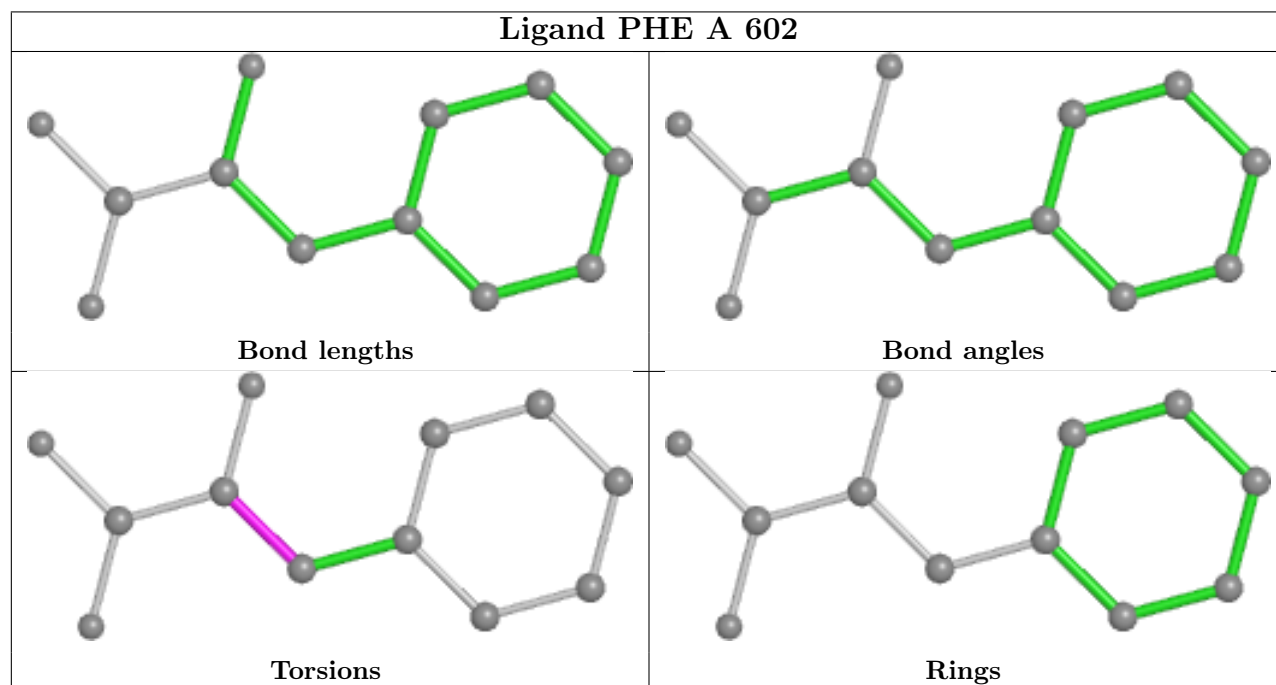
There are no ring outliers.

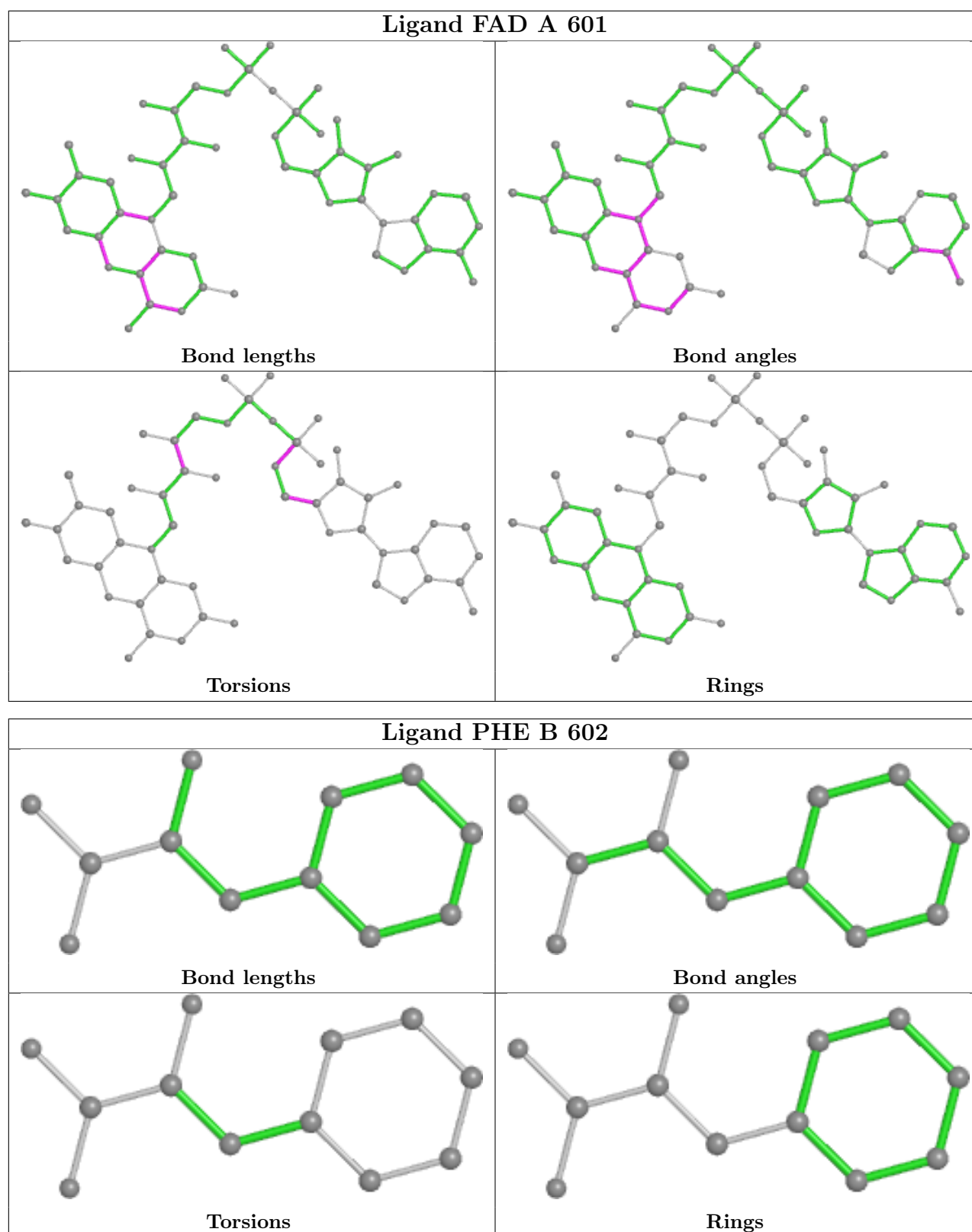
6 monomers are involved in 20 short contacts:

Mol	Chain	Res	Type	Clashes	Symm-Clashes
5	B	605	GOL	2	0
3	A	602	PHE	6	0
5	A	604	GOL	1	0
2	B	601	FAD	3	0
2	A	601	FAD	4	0
3	B	602	PHE	4	0

The following is a two-dimensional graphical depiction of Mogul quality analysis of bond lengths, bond angles, torsion angles, and ring geometry for all instances of the Ligand of Interest. In addition, ligands with molecular weight > 250 and outliers as shown on the validation Tables will also be included. For torsion angles, if less than 5% of the Mogul distribution of torsion angles is within 10 degrees of the torsion angle in question, then that torsion angle is considered an outlier. Any bond that is central to one or more torsion angles identified as an outlier by Mogul will be highlighted in the graph. For rings, the root-mean-square deviation (RMSD) between the ring in question and similar rings identified by Mogul is calculated over all ring torsion angles. If the

average RMSD is greater than 60 degrees and the minimal RMSD between the ring in question and any Mogul-identified rings is also greater than 60 degrees, then that ring is considered an outlier. The outliers are highlighted in purple. The color gray indicates Mogul did not find sufficient equivalents in the CSD to analyse the geometry.





## 5.7 Other polymers ⓘ

There are no such residues in this entry.

## 5.8 Polymer linkage issues ⓘ

There are no chain breaks in this entry.

## 6 Fit of model and data ⓘ

### 6.1 Protein, DNA and RNA chains ⓘ

In the following table, the column labelled ‘#RSRZ> 2’ contains the number (and percentage) of RSRZ outliers, followed by percent RSRZ outliers for the chain as percentile scores relative to all X-ray entries and entries of similar resolution. The OWAB column contains the minimum, median, 95<sup>th</sup> percentile and maximum values of the occupancy-weighted average B-factor per residue. The column labelled ‘Q< 0.9’ lists the number of (and percentage) of residues with an average occupancy less than 0.9.

Mol	Chain	Analysed	<RSRZ>	#RSRZ>2	OWAB(Å <sup>2</sup> )	Q<0.9
1	A	509/540 (94%)	-0.08	17 (3%) 46 44	10, 20, 42, 64	0
1	B	509/540 (94%)	-0.09	16 (3%) 49 47	10, 20, 41, 67	0
All	All	1018/1080 (94%)	-0.09	33 (3%) 47 45	10, 20, 42, 67	0

All (33) RSRZ outliers are listed below:

Mol	Chain	Res	Type	RSRZ
1	B	391	LYS	9.3
1	B	510	TYR	5.3
1	B	387	PRO	5.1
1	A	510	TYR	4.9
1	A	391	LYS	4.8
1	B	4	GLU	3.9
1	B	512	LEU	3.9
1	B	389	PRO	3.6
1	A	390	PRO	3.4
1	A	4	GLU	3.3
1	B	388	GLN	3.2
1	A	337	CYS	3.2
1	B	332	ASP	3.0
1	A	361	GLY	3.0
1	A	84	ARG	3.0
1	B	511	GLY	2.9
1	B	331	LYS	2.8
1	A	32	PRO	2.7
1	A	5	LEU	2.6
1	B	385	ALA	2.5
1	A	387	PRO	2.5
1	B	111	GLY	2.5
1	A	388	GLN	2.5
1	B	97	GLU	2.5

*Continued on next page...*

*Continued from previous page...*

Mol	Chain	Res	Type	RSRZ
1	A	389	PRO	2.4
1	B	386	PRO	2.3
1	A	97	GLU	2.2
1	A	30	LYS	2.1
1	A	360	THR	2.1
1	B	390	PRO	2.1
1	A	511	GLY	2.0
1	A	385	ALA	2.0
1	B	262	PRO	2.0

## 6.2 Non-standard residues in protein, DNA, RNA chains [i](#)

There are no non-standard protein/DNA/RNA residues in this entry.

## 6.3 Carbohydrates [i](#)

There are no monosaccharides in this entry.

## 6.4 Ligands [i](#)

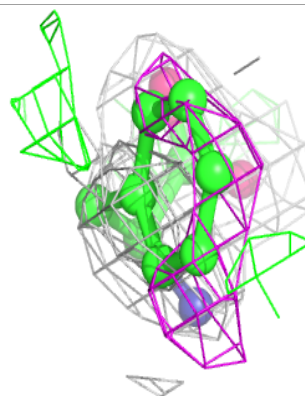
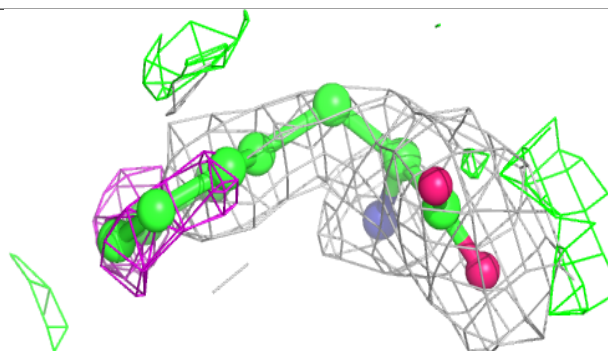
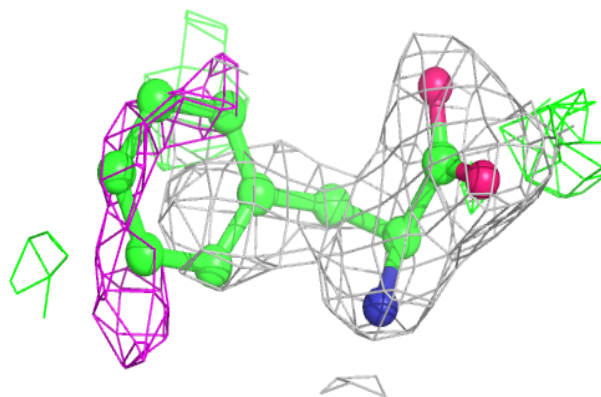
In the following table, the Atoms column lists the number of modelled atoms in the group and the number defined in the chemical component dictionary. The B-factors column lists the minimum, median, 95<sup>th</sup> percentile and maximum values of B factors of atoms in the group. The column labelled 'Q< 0.9' lists the number of atoms with occupancy less than 0.9.

Mol	Type	Chain	Res	Atoms	RSCC	RSR	B-factors(Å <sup>2</sup> )	Q<0.9
5	GOL	A	604	6/6	0.73	0.27	20,24,31,33	6
3	PHE	A	602	12/12	0.79	0.39	18,24,37,39	12
5	GOL	B	604	6/6	0.79	0.22	20,27,28,31	6
3	PHE	B	602	12/12	0.79	0.33	16,23,32,35	12
5	GOL	B	605	6/6	0.80	0.18	29,32,38,44	6
5	GOL	A	605	6/6	0.85	0.21	29,36,41,43	0
4	SO4	A	603	5/5	0.92	0.13	30,37,46,51	5
4	SO4	B	603	5/5	0.92	0.17	27,35,54,55	5
2	FAD	A	601	53/53	0.95	0.13	9,14,18,20	0
2	FAD	B	601	53/53	0.96	0.13	10,14,16,18	0

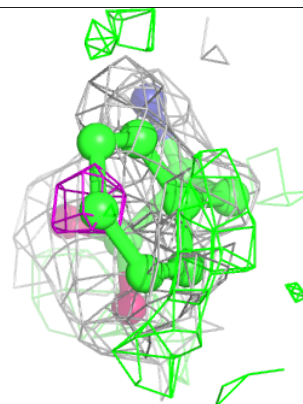
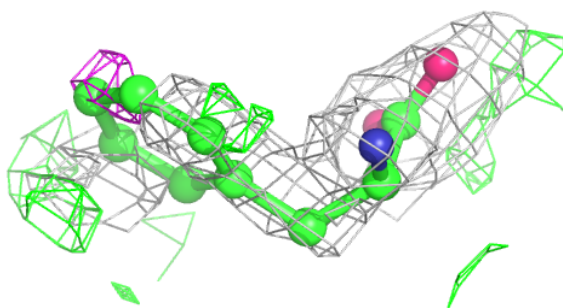
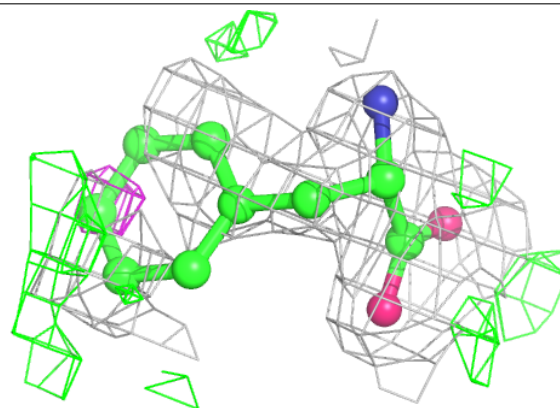
The following is a graphical depiction of the model fit to experimental electron density of all instances of the Ligand of Interest. In addition, ligands with molecular weight > 250 and outliers as shown on the geometry validation Tables will also be included. Each fit is shown from different orientation to approximate a three-dimensional view.

**Electron density around PHE A 602:**

$2mF_o-DF_c$  (at 0.7 rmsd) in gray  
 $mF_o-DF_c$  (at 3 rmsd) in purple (negative)  
and green (positive)

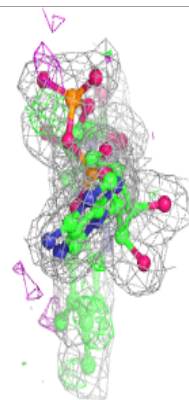
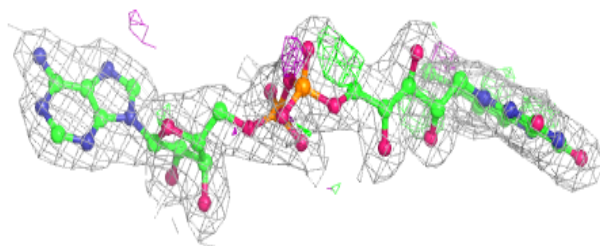
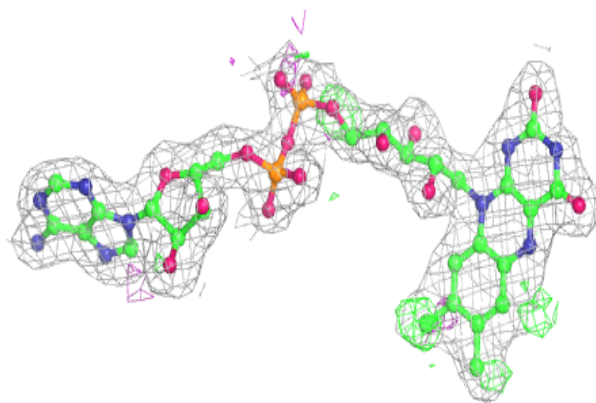
**Electron density around PHE B 602:**

$2mF_o-DF_c$  (at 0.7 rmsd) in gray  
 $mF_o-DF_c$  (at 3 rmsd) in purple (negative)  
and green (positive)

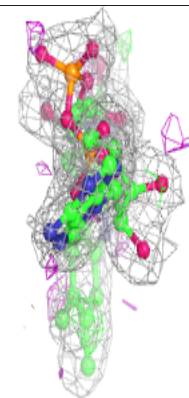
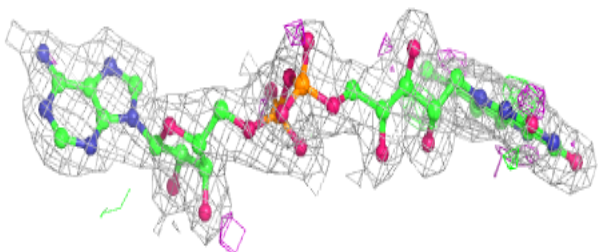
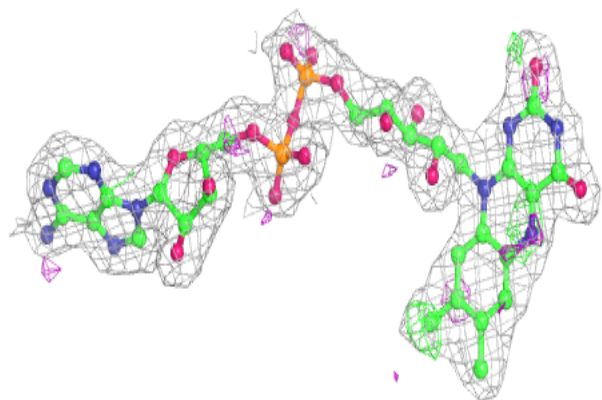


**Electron density around FAD A 601:**

$2mF_o-DF_c$  (at 0.7 rmsd) in gray  
 $mF_o-DF_c$  (at 3 rmsd) in purple (negative)  
and green (positive)

**Electron density around FAD B 601:**

$2mF_o-DF_c$  (at 0.7 rmsd) in gray  
 $mF_o-DF_c$  (at 3 rmsd) in purple (negative)  
and green (positive)





## 6.5 Other polymers [i](#)

There are no such residues in this entry.