



# Full wwPDB X-ray Structure Validation Report ⓘ

May 24, 2020 – 02:56 pm BST

PDB ID : 6C4N  
Title : Pseudopaline dehydrogenase (PaODH) - NADP<sup>+</sup> bound  
Authors : McFarlane, J.S.; Davis, C.L.; Lamb, A.L.  
Deposited on : 2018-01-12  
Resolution : 1.95 Å(reported)

This is a Full wwPDB X-ray Structure Validation Report for a publicly released PDB entry.

We welcome your comments at [validation@mail.wwpdb.org](mailto:validation@mail.wwpdb.org)

A user guide is available at

<https://www.wwpdb.org/validation/2017/XrayValidationReportHelp>

with specific help available everywhere you see the ⓘ symbol.

---

The following versions of software and data (see [references ⓘ](#)) were used in the production of this report:

MolProbity : 4.02b-467  
Mogul : 1.8.5 (274361), CSD as541be (2020)  
Xtriage (Phenix) : 1.13  
EDS : 2.11  
buster-report : 1.1.7 (2018)  
Percentile statistics : 20191225.v01 (using entries in the PDB archive December 25th 2019)  
Refmac : 5.8.0158  
CCP4 : 7.0.044 (Gargrove)  
Ideal geometry (proteins) : Engh & Huber (2001)  
Ideal geometry (DNA, RNA) : Parkinson et al. (1996)  
Validation Pipeline (wwPDB-VP) : 2.11

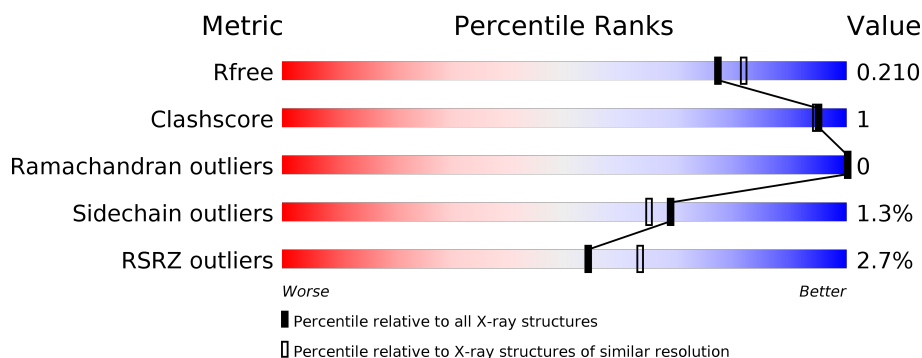
# 1 Overall quality at a glance

The following experimental techniques were used to determine the structure:

## *X-RAY DIFFRACTION*

The reported resolution of this entry is 1.95 Å.

Percentile scores (ranging between 0-100) for global validation metrics of the entry are shown in the following graphic. The table shows the number of entries on which the scores are based.



Metric	Whole archive (#Entries)	Similar resolution (#Entries, resolution range(Å))
$R_{free}$	130704	2580 (1.96-1.96)
Clashscore	141614	2705 (1.96-1.96)
Ramachandran outliers	138981	2678 (1.96-1.96)
Sidechain outliers	138945	2678 (1.96-1.96)
RSRZ outliers	127900	2539 (1.96-1.96)

The table below summarises the geometric issues observed across the polymeric chains and their fit to the electron density. The red, orange, yellow and green segments on the lower bar indicate the fraction of residues that contain outliers for  $\geq 3$ , 2, 1 and 0 types of geometric quality criteria respectively. A grey segment represents the fraction of residues that are not modelled. The numeric value for each fraction is indicated below the corresponding segment, with a dot representing fractions  $\leq 5\%$ . The upper red bar (where present) indicates the fraction of residues that have poor fit to the electron density. The numeric value is given above the bar.

Mol	Chain	Length	Quality of chain
1	A	449	<div> <div>2%</div> <div> <div></div> <div>90%</div> <div>• 6%</div> </div> </div>
1	B	449	<div> <div>3%</div> <div> <div></div> <div>90%</div> <div>• 7%</div> </div> </div>

## 2 Entry composition [i](#)

There are 4 unique types of molecules in this entry. The entry contains 13613 atoms, of which 6573 are hydrogens and 0 are deuteriums.

In the tables below, the ZeroOcc column contains the number of atoms modelled with zero occupancy, the AltConf column contains the number of residues with at least one atom in alternate conformation and the Trace column contains the number of residues modelled with at most 2 atoms.

- Molecule 1 is a protein called Pseudopaline dehydrogenase.

Mol	Chain	Residues	Atoms						ZeroOcc	AltConf	Trace
1	A	424	Total	C	H	N	O	S	0	1	0
			6600	2095	3298	602	591	14			
1	B	418	Total	C	H	N	O	S	0	0	0
			6460	2057	3219	588	583	13			

There are 32 discrepancies between the modelled and reference sequences:

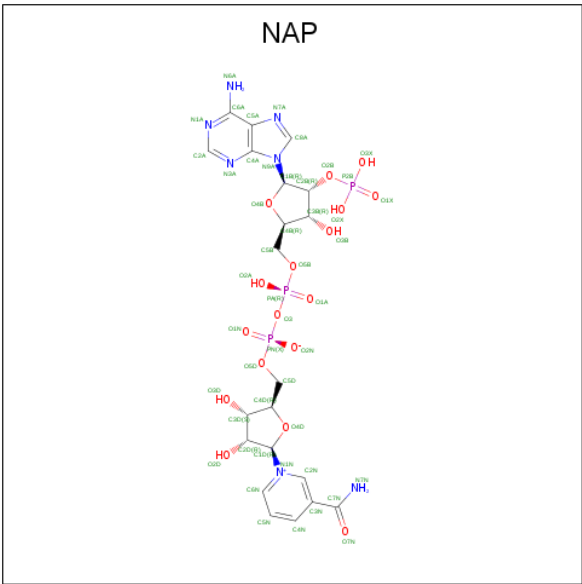
Chain	Residue	Modelled	Actual	Comment	Reference
A	-15	HIS	-	expression tag	UNP Q9HUX5
A	-14	HIS	-	expression tag	UNP Q9HUX5
A	-13	HIS	-	expression tag	UNP Q9HUX5
A	-12	HIS	-	expression tag	UNP Q9HUX5
A	-11	HIS	-	expression tag	UNP Q9HUX5
A	-10	HIS	-	expression tag	UNP Q9HUX5
A	-9	SER	-	expression tag	UNP Q9HUX5
A	-8	SER	-	expression tag	UNP Q9HUX5
A	-7	GLY	-	expression tag	UNP Q9HUX5
A	-6	LEU	-	expression tag	UNP Q9HUX5
A	-5	VAL	-	expression tag	UNP Q9HUX5
A	-4	PRO	-	expression tag	UNP Q9HUX5
A	-3	ARG	-	expression tag	UNP Q9HUX5
A	-2	GLY	-	expression tag	UNP Q9HUX5
A	-1	SER	-	expression tag	UNP Q9HUX5
A	0	HIS	-	expression tag	UNP Q9HUX5
B	-15	HIS	-	expression tag	UNP Q9HUX5
B	-14	HIS	-	expression tag	UNP Q9HUX5
B	-13	HIS	-	expression tag	UNP Q9HUX5
B	-12	HIS	-	expression tag	UNP Q9HUX5
B	-11	HIS	-	expression tag	UNP Q9HUX5
B	-10	HIS	-	expression tag	UNP Q9HUX5
B	-9	SER	-	expression tag	UNP Q9HUX5
B	-8	SER	-	expression tag	UNP Q9HUX5
B	-7	GLY	-	expression tag	UNP Q9HUX5

*Continued on next page...*

Continued from previous page...

Chain	Residue	Modelled	Actual	Comment	Reference
B	-6	LEU	-	expression tag	UNP Q9HUX5
B	-5	VAL	-	expression tag	UNP Q9HUX5
B	-4	PRO	-	expression tag	UNP Q9HUX5
B	-3	ARG	-	expression tag	UNP Q9HUX5
B	-2	GLY	-	expression tag	UNP Q9HUX5
B	-1	SER	-	expression tag	UNP Q9HUX5
B	0	HIS	-	expression tag	UNP Q9HUX5

- Molecule 2 is NADP NICOTINAMIDE-ADENINE-DINUCLEOTIDE PHOSPHATE (three-letter code: NAP) (formula: C<sub>21</sub>H<sub>28</sub>N<sub>7</sub>O<sub>17</sub>P<sub>3</sub>).



Mol	Chain	Residues	Atoms						ZeroOcc	AltConf
2	A	1	Total	C	H	N	O	P	0	0
			73	21	25	7	17	3		
2	B	1	Total	C	H	N	O	P	0	0
			73	21	25	7	17	3		

- Molecule 3 is 1,2-ETHANEDIOL (three-letter code: EDO) (formula: C<sub>2</sub>H<sub>6</sub>O<sub>2</sub>).



Mol	Chain	Residues	Atoms				ZeroOcc	AltConf
3	A	1	Total	C	H	O	0	0
			10	2	6	2		

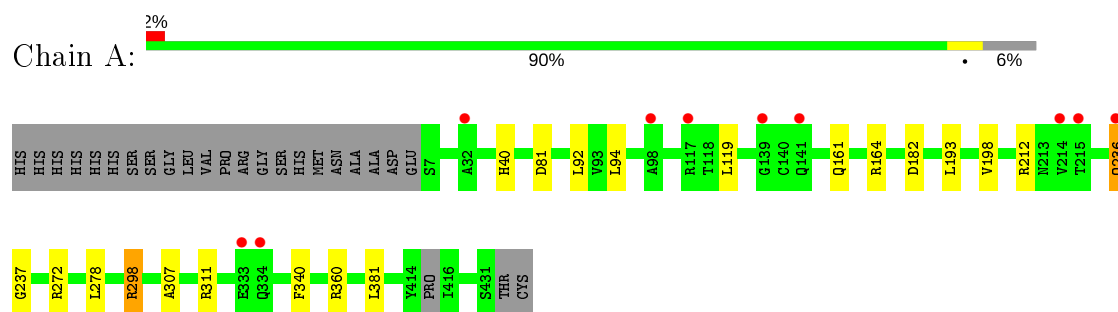
- Molecule 4 is water.

Mol	Chain	Residues	Atoms		ZeroOcc	AltConf
4	A	212	Total	O	0	0
			212	212		
4	B	185	Total	O	0	0
			185	185		

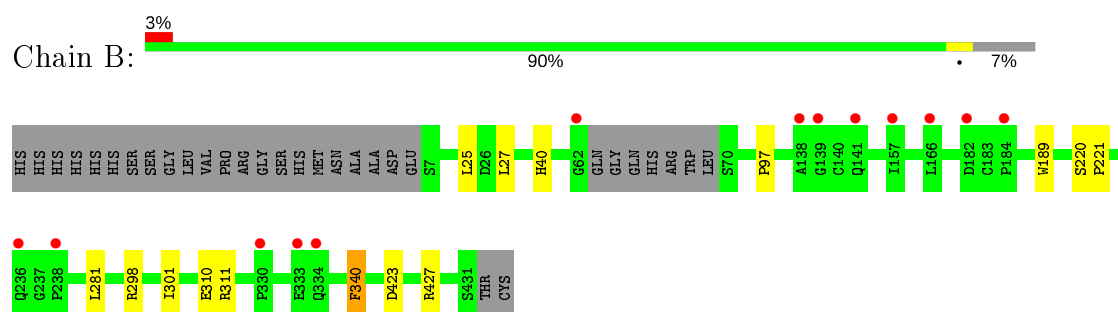
### 3 Residue-property plots [i](#)

These plots are drawn for all protein, RNA and DNA chains in the entry. The first graphic for a chain summarises the proportions of the various outlier classes displayed in the second graphic. The second graphic shows the sequence view annotated by issues in geometry and electron density. Residues are color-coded according to the number of geometric quality criteria for which they contain at least one outlier: green = 0, yellow = 1, orange = 2 and red = 3 or more. A red dot above a residue indicates a poor fit to the electron density ( $RSRZ > 2$ ). Stretches of 2 or more consecutive residues without any outlier are shown as a green connector. Residues present in the sample, but not in the model, are shown in grey.

- Molecule 1: Pseudopaline dehydrogenase



- Molecule 1: Pseudopaline dehydrogenase



## 4 Data and refinement statistics

Property	Value	Source
Space group	C 1 2 1	Depositor
Cell constants a, b, c, $\alpha$ , $\beta$ , $\gamma$	180.05Å 53.63Å 96.76Å 90.00° 99.03° 90.00°	Depositor
Resolution (Å)	38.17 – 1.95 38.17 – 1.95	Depositor EDS
% Data completeness (in resolution range)	96.7 (38.17-1.95) 96.7 (38.17-1.95)	Depositor EDS
$R_{merge}$	0.07	Depositor
$R_{sym}$	(Not available)	Depositor
$\langle I/\sigma(I) \rangle$ <sup>1</sup>	2.07 (at 1.95Å)	Xtriage
Refinement program	PHENIX (1.12_2829: ???)	Depositor
R, $R_{free}$	0.168 , 0.211 0.169 , 0.210	Depositor DCC
$R_{free}$ test set	1998 reflections (3.08%)	wwPDB-VP
Wilson B-factor (Å <sup>2</sup> )	24.3	Xtriage
Anisotropy	0.652	Xtriage
Bulk solvent $k_{sol}$ (e/Å <sup>3</sup> ), $B_{sol}$ (Å <sup>2</sup> )	0.43 , 48.5	EDS
L-test for twinning <sup>2</sup>	$\langle  L  \rangle = 0.50$ , $\langle L^2 \rangle = 0.33$	Xtriage
Estimated twinning fraction	No twinning to report.	Xtriage
$F_o, F_c$ correlation	0.96	EDS
Total number of atoms	13613	wwPDB-VP
Average B, all atoms (Å <sup>2</sup> )	29.0	wwPDB-VP

Xtriage's analysis on translational NCS is as follows: *The largest off-origin peak in the Patterson function is 5.47% of the height of the origin peak. No significant pseudotranslation is detected.*

<sup>1</sup>Intensities estimated from amplitudes.

<sup>2</sup>Theoretical values of  $\langle |L| \rangle$ ,  $\langle L^2 \rangle$  for acentric reflections are 0.5, 0.333 respectively for untwinned datasets, and 0.375, 0.2 for perfectly twinned datasets.

## 5 Model quality [i](#)

### 5.1 Standard geometry [i](#)

Bond lengths and bond angles in the following residue types are not validated in this section: NAP, EDO

The Z score for a bond length (or angle) is the number of standard deviations the observed value is removed from the expected value. A bond length (or angle) with  $|Z| > 5$  is considered an outlier worth inspection. RMSZ is the root-mean-square of all Z scores of the bond lengths (or angles).

Mol	Chain	Bond lengths		Bond angles	
		RMSZ	$\# Z  > 5$	RMSZ	$\# Z  > 5$
1	A	0.53	0/3382	0.70	2/4599 (0.0%)
1	B	0.52	0/3316	0.66	1/4511 (0.0%)
All	All	0.53	0/6698	0.68	3/9110 (0.0%)

There are no bond length outliers.

All (3) bond angle outliers are listed below:

Mol	Chain	Res	Type	Atoms	Z	Observed(°)	Ideal(°)
1	A	298	ARG	NE-CZ-NH2	-8.46	116.07	120.30
1	A	94	LEU	CB-CG-CD2	7.10	123.07	111.00
1	B	298	ARG	NE-CZ-NH2	-6.05	117.28	120.30

There are no chirality outliers.

There are no planarity outliers.

### 5.2 Too-close contacts [i](#)

In the following table, the Non-H and H(model) columns list the number of non-hydrogen atoms and hydrogen atoms in the chain respectively. The H(added) column lists the number of hydrogen atoms added and optimized by MolProbity. The Clashes column lists the number of clashes within the asymmetric unit, whereas Symm-Clashes lists symmetry related clashes.

Mol	Chain	Non-H	H(model)	H(added)	Clashes	Symm-Clashes
1	A	3302	3298	3298	9	0
1	B	3241	3219	3240	8	0
2	A	48	25	24	0	0
2	B	48	25	24	1	0
3	A	4	6	6	0	0
4	A	212	0	0	0	0

*Continued on next page...*



*Continued from previous page...*

Mol	Chain	Non-H	H(model)	H(added)	Clashes	Symm-Clashes
4	B	185	0	0	0	0
All	All	7040	6573	6592	16	0

The all-atom clashscore is defined as the number of clashes found per 1000 atoms (including hydrogen atoms). The all-atom clashscore for this structure is 1.

All (16) close contacts within the same asymmetric unit are listed below, sorted by their clash magnitude.

Atom-1	Atom-2	Interatomic distance (Å)	Clash overlap (Å)
1:A:161:GLN:OE1	1:A:164:ARG:NH1	2.32	0.61
1:A:272:ARG:CZ	1:A:381:LEU:HD21	2.35	0.56
1:A:311:ARG:HD2	1:B:310:GLU:OE1	2.06	0.55
1:A:236:GLN:HG3	1:A:237:GLY:N	2.23	0.53
1:A:193:LEU:HB3	1:A:198:VAL:HG13	1.97	0.47
1:A:92:LEU:HB2	1:A:119:LEU:HD13	1.97	0.47
1:B:97:PRO:HA	2:B:501:NAP:O3D	2.16	0.45
1:B:27:LEU:HD21	1:B:189:TRP:CH2	2.51	0.45
1:A:212:ARG:HG2	1:A:278:LEU:HD23	2.00	0.43
1:B:25:LEU:HD13	1:B:25:LEU:HA	1.81	0.42
1:B:281:LEU:HD23	1:B:301:ILE:HA	2.02	0.42
1:B:340:PHE:C	1:B:340:PHE:CD1	2.94	0.41
1:B:220:SER:HB2	1:B:221:PRO:HD3	2.02	0.41
1:A:81:ASP:C	1:A:81:ASP:OD1	2.58	0.41
1:B:423:ASP:OD2	1:B:427:ARG:CZ	2.69	0.41
1:A:307:ALA:HB1	1:A:311:ARG:HG2	2.04	0.40

There are no symmetry-related clashes.

## 5.3 Torsion angles ⓘ

### 5.3.1 Protein backbone ⓘ

In the following table, the Percentiles column shows the percent Ramachandran outliers of the chain as a percentile score with respect to all X-ray entries followed by that with respect to entries of similar resolution.

The Analysed column shows the number of residues for which the backbone conformation was analysed, and the total number of residues.

Mol	Chain	Analysed	Favoured	Allowed	Outliers	Percentiles	
1	A	421/449 (94%)	414 (98%)	7 (2%)	0	100	100
1	B	414/449 (92%)	407 (98%)	7 (2%)	0	100	100
All	All	835/898 (93%)	821 (98%)	14 (2%)	0	100	100

There are no Ramachandran outliers to report.

### 5.3.2 Protein sidechains ⓘ

In the following table, the Percentiles column shows the percent sidechain outliers of the chain as a percentile score with respect to all X-ray entries followed by that with respect to entries of similar resolution.

The Analysed column shows the number of residues for which the sidechain conformation was analysed, and the total number of residues.

Mol	Chain	Analysed	Rotameric	Outliers	Percentiles	
1	A	341/361 (94%)	335 (98%)	6 (2%)	59	53
1	B	335/361 (93%)	332 (99%)	3 (1%)	78	77
All	All	676/722 (94%)	667 (99%)	9 (1%)	69	65

All (9) residues with a non-rotameric sidechain are listed below:

Mol	Chain	Res	Type
1	A	40	HIS
1	A	182	ASP
1	A	236	GLN
1	A	298	ARG
1	A	340	PHE
1	A	360	ARG
1	B	40	HIS
1	B	311	ARG
1	B	340	PHE

Some sidechains can be flipped to improve hydrogen bonding and reduce clashes. All (1) such sidechains are listed below:

Mol	Chain	Res	Type
1	B	337	HIS

### 5.3.3 RNA ⓘ

There are no RNA molecules in this entry.

## 5.4 Non-standard residues in protein, DNA, RNA chains ⓘ

There are no non-standard protein/DNA/RNA residues in this entry.

## 5.5 Carbohydrates ⓘ

There are no carbohydrates in this entry.

## 5.6 Ligand geometry ⓘ

3 ligands are modelled in this entry.

In the following table, the Counts columns list the number of bonds (or angles) for which Mogul statistics could be retrieved, the number of bonds (or angles) that are observed in the model and the number of bonds (or angles) that are defined in the Chemical Component Dictionary. The Link column lists molecule types, if any, to which the group is linked. The Z score for a bond length (or angle) is the number of standard deviations the observed value is removed from the expected value. A bond length (or angle) with  $|Z| > 2$  is considered an outlier worth inspection. RMSZ is the root-mean-square of all Z scores of the bond lengths (or angles).

Mol	Type	Chain	Res	Link	Bond lengths			Bond angles		
					Counts	RMSZ	$\# Z  > 2$	Counts	RMSZ	$\# Z  > 2$
3	EDO	A	502	-	3,3,3	0.31	0	2,2,2	1.24	0
2	NAP	A	501	-	45,52,52	4.29	19 (42%)	56,80,80	1.64	10 (17%)
2	NAP	B	501	-	45,52,52	4.33	14 (31%)	56,80,80	1.51	7 (12%)

In the following table, the Chirals column lists the number of chiral outliers, the number of chiral centers analysed, the number of these observed in the model and the number defined in the Chemical Component Dictionary. Similar counts are reported in the Torsion and Rings columns. '-' means no outliers of that kind were identified.

Mol	Type	Chain	Res	Link	Chirals	Torsions	Rings
3	EDO	A	502	-	-	1/1/1/1	-
2	NAP	A	501	-	-	5/31/67/67	0/5/5/5
2	NAP	B	501	-	-	1/31/67/67	0/5/5/5

All (33) bond length outliers are listed below:

Mol	Chain	Res	Type	Atoms	Z	Observed(Å)	Ideal(Å)
2	B	501	NAP	O4D-C1D	15.98	1.63	1.41
2	B	501	NAP	C2D-C1D	-15.50	1.30	1.53
2	A	501	NAP	O4D-C1D	15.44	1.62	1.41
2	A	501	NAP	C2D-C1D	-14.57	1.31	1.53
2	A	501	NAP	O4B-C1B	14.47	1.61	1.41
2	B	501	NAP	O4B-C1B	14.00	1.60	1.41
2	B	501	NAP	O4B-C4B	-5.30	1.33	1.45
2	A	501	NAP	O4B-C4B	-5.24	1.33	1.45
2	B	501	NAP	O4D-C4D	-4.48	1.35	1.45
2	A	501	NAP	O4D-C4D	-4.08	1.35	1.45
2	B	501	NAP	C7N-N7N	3.81	1.40	1.33
2	A	501	NAP	C7N-N7N	3.78	1.40	1.33
2	A	501	NAP	O3D-C3D	-3.63	1.34	1.43
2	A	501	NAP	O2D-C2D	3.40	1.51	1.43
2	B	501	NAP	C5A-C4A	-3.22	1.32	1.40
2	B	501	NAP	O3D-C3D	-2.85	1.36	1.43
2	B	501	NAP	O2D-C2D	2.75	1.49	1.43
2	A	501	NAP	C3N-C7N	2.66	1.54	1.50
2	A	501	NAP	PA-O5B	2.54	1.69	1.59
2	A	501	NAP	C2A-N3A	2.52	1.36	1.32
2	A	501	NAP	C5A-C4A	-2.50	1.34	1.40
2	B	501	NAP	C4N-C3N	-2.49	1.35	1.39
2	A	501	NAP	O3B-C3B	-2.37	1.37	1.43
2	A	501	NAP	P2B-O3X	-2.35	1.45	1.54
2	B	501	NAP	O3B-C3B	-2.24	1.37	1.43
2	A	501	NAP	P2B-O2B	2.23	1.63	1.59
2	B	501	NAP	PA-O5B	2.22	1.68	1.59
2	A	501	NAP	C4N-C3N	-2.20	1.35	1.39
2	A	501	NAP	C6A-N6A	2.20	1.42	1.34
2	B	501	NAP	C6A-N6A	2.18	1.42	1.34
2	A	501	NAP	O5B-C5B	-2.15	1.36	1.44
2	A	501	NAP	C2N-N1N	2.13	1.37	1.35
2	B	501	NAP	O5B-C5B	-2.08	1.36	1.44

All (17) bond angle outliers are listed below:

Mol	Chain	Res	Type	Atoms	Z	Observed(°)	Ideal(°)
2	A	501	NAP	N3A-C2A-N1A	-5.21	120.53	128.68
2	B	501	NAP	N3A-C2A-N1A	-5.04	120.80	128.68
2	B	501	NAP	C1B-N9A-C4A	-4.98	117.89	126.64
2	A	501	NAP	O2D-C2D-C3D	-4.35	97.74	111.82
2	B	501	NAP	PN-O3-PA	-3.76	119.93	132.83
2	A	501	NAP	PN-O3-PA	-3.52	120.73	132.83

*Continued on next page...*

*Continued from previous page...*

Mol	Chain	Res	Type	Atoms	Z	Observed(°)	Ideal(°)
2	A	501	NAP	C1B-N9A-C4A	-3.42	120.64	126.64
2	B	501	NAP	C6N-N1N-C2N	-3.00	119.24	121.97
2	A	501	NAP	C3N-C7N-N7N	2.84	121.16	117.75
2	A	501	NAP	O7N-C7N-N7N	-2.75	118.67	122.58
2	A	501	NAP	C6N-N1N-C2N	-2.66	119.55	121.97
2	B	501	NAP	C5B-C4B-C3B	-2.47	105.92	115.18
2	A	501	NAP	C5A-C6A-N6A	2.47	124.10	120.35
2	A	501	NAP	C3D-C2D-C1D	2.18	104.26	100.98
2	A	501	NAP	C5D-C4D-C3D	-2.16	107.11	115.18
2	B	501	NAP	O2N-PN-O5D	2.11	117.56	107.75
2	B	501	NAP	O5B-C5B-C4B	-2.03	102.00	108.99

There are no chirality outliers.

All (7) torsion outliers are listed below:

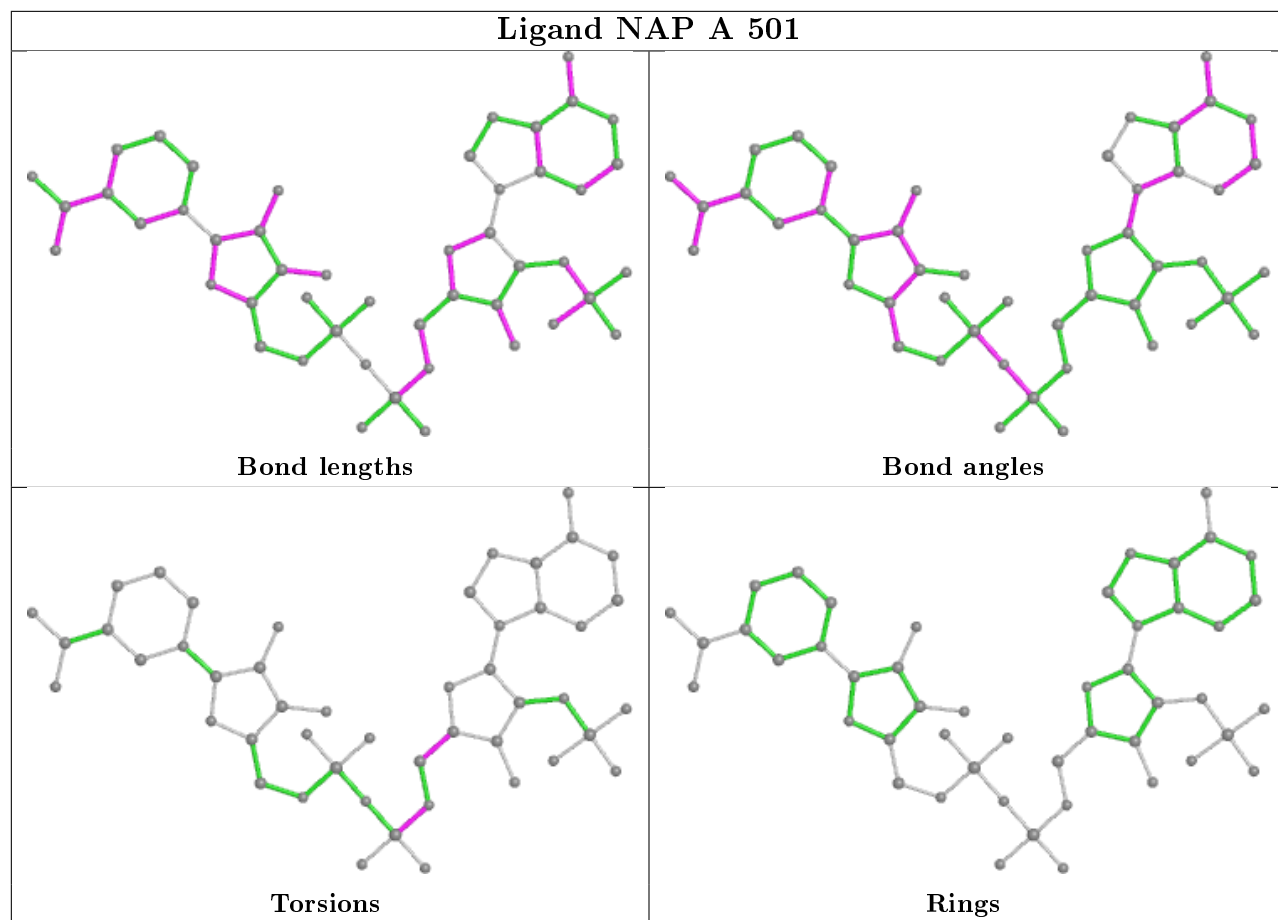
Mol	Chain	Res	Type	Atoms
2	A	501	NAP	C5B-O5B-PA-O1A
2	A	501	NAP	C5B-O5B-PA-O2A
2	A	501	NAP	C5B-O5B-PA-O3
2	A	501	NAP	O4B-C4B-C5B-O5B
2	A	501	NAP	C3B-C4B-C5B-O5B
3	A	502	EDO	O1-C1-C2-O2
2	B	501	NAP	O4B-C4B-C5B-O5B

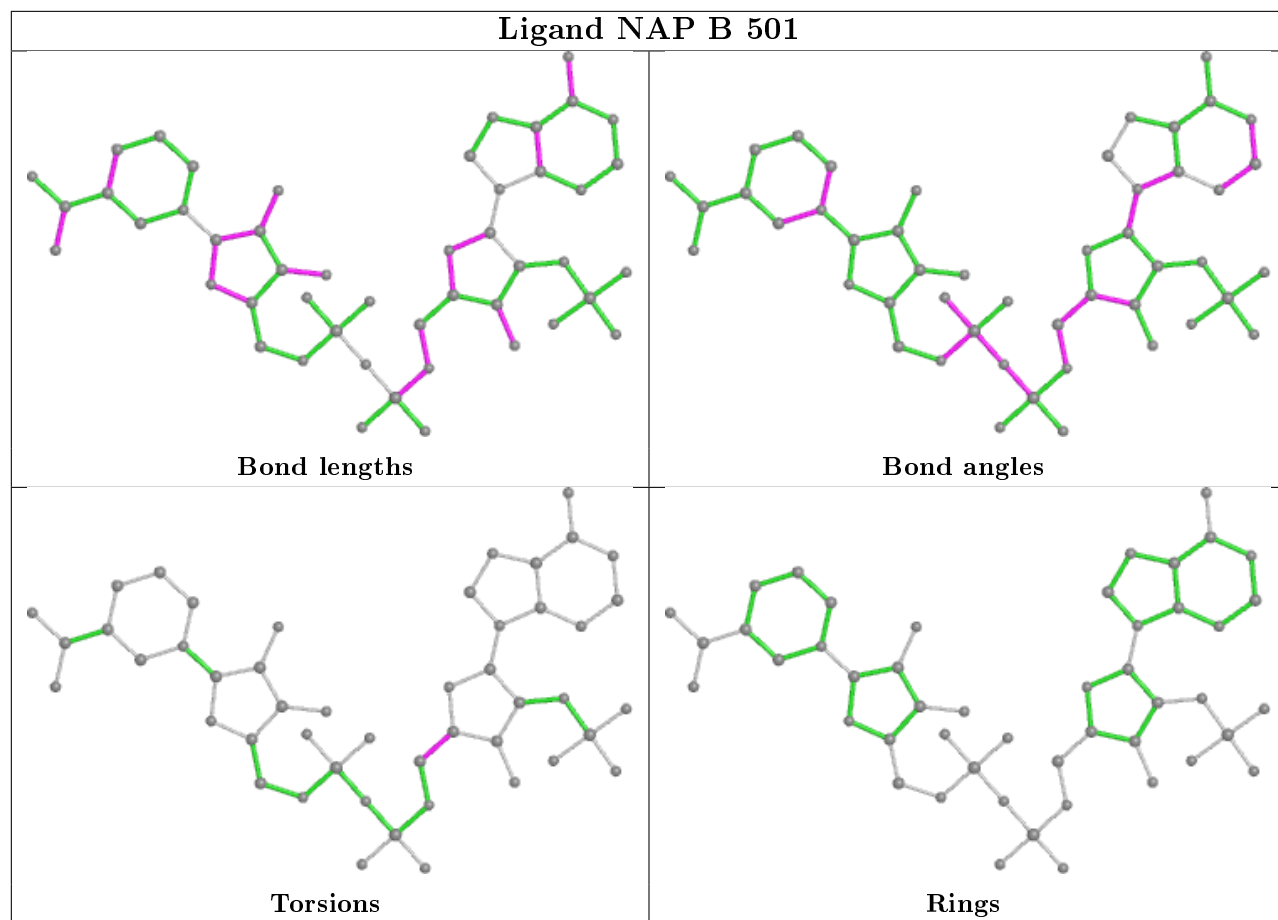
There are no ring outliers.

1 monomer is involved in 1 short contact:

Mol	Chain	Res	Type	Clashes	Symm-Clashes
2	B	501	NAP	1	0

The following is a two-dimensional graphical depiction of Mogul quality analysis of bond lengths, bond angles, torsion angles, and ring geometry for all instances of the Ligand of Interest. In addition, ligands with molecular weight > 250 and outliers as shown on the validation Tables will also be included. For torsion angles, if less than 5% of the Mogul distribution of torsion angles is within 10 degrees of the torsion angle in question, then that torsion angle is considered an outlier. Any bond that is central to one or more torsion angles identified as an outlier by Mogul will be highlighted in the graph. For rings, the root-mean-square deviation (RMSD) between the ring in question and similar rings identified by Mogul is calculated over all ring torsion angles. If the average RMSD is greater than 60 degrees and the minimal RMSD between the ring in question and any Mogul-identified rings is also greater than 60 degrees, then that ring is considered an outlier. The outliers are highlighted in purple. The color gray indicates Mogul did not find sufficient equivalents in the CSD to analyse the geometry.





## 5.7 Other polymers [i](#)

There are no such residues in this entry.

## 5.8 Polymer linkage issues [i](#)

There are no chain breaks in this entry.

## 6 Fit of model and data ⓘ

### 6.1 Protein, DNA and RNA chains ⓘ

In the following table, the column labelled ‘#RSRZ> 2’ contains the number (and percentage) of RSRZ outliers, followed by percent RSRZ outliers for the chain as percentile scores relative to all X-ray entries and entries of similar resolution. The OWAB column contains the minimum, median, 95<sup>th</sup> percentile and maximum values of the occupancy-weighted average B-factor per residue. The column labelled ‘Q< 0.9’ lists the number of (and percentage) of residues with an average occupancy less than 0.9.

Mol	Chain	Analysed	<RSRZ>	#RSRZ>2	OWAB(Å <sup>2</sup> )	Q<0.9
1	A	424/449 (94%)	0.01	10 (2%) 59 68	14, 22, 45, 72	0
1	B	418/449 (93%)	-0.04	13 (3%) 49 58	15, 24, 48, 73	0
All	All	842/898 (93%)	-0.02	23 (2%) 54 63	14, 23, 46, 73	0

All (23) RSRZ outliers are listed below:

Mol	Chain	Res	Type	RSRZ
1	B	157	ILE	5.6
1	A	236	GLN	5.6
1	B	182	ASP	4.2
1	A	32	ALA	4.0
1	A	141	GLN	4.0
1	A	333	GLU	3.6
1	B	236	GLN	3.4
1	B	184	PRO	3.1
1	A	334	GLN	3.0
1	B	166	LEU	3.0
1	B	139	GLY	2.7
1	B	138	ALA	2.7
1	B	334	GLN	2.6
1	A	215	THR	2.6
1	A	214	VAL	2.6
1	A	117	ARG	2.5
1	B	238	PRO	2.3
1	B	141	GLN	2.3
1	B	333	GLU	2.2
1	A	139	GLY	2.2
1	A	98	ALA	2.1
1	B	62	GLY	2.1
1	B	330	PRO	2.1



## 6.2 Non-standard residues in protein, DNA, RNA chains [i](#)

There are no non-standard protein/DNA/RNA residues in this entry.

## 6.3 Carbohydrates [i](#)

There are no carbohydrates in this entry.

## 6.4 Ligands [i](#)

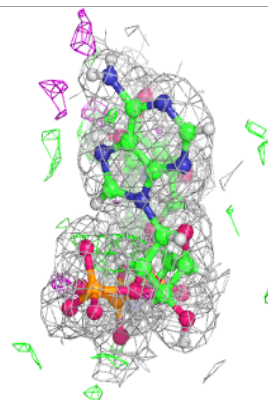
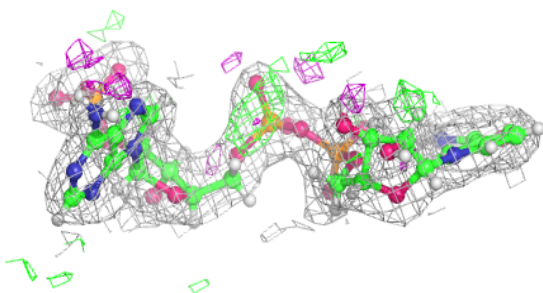
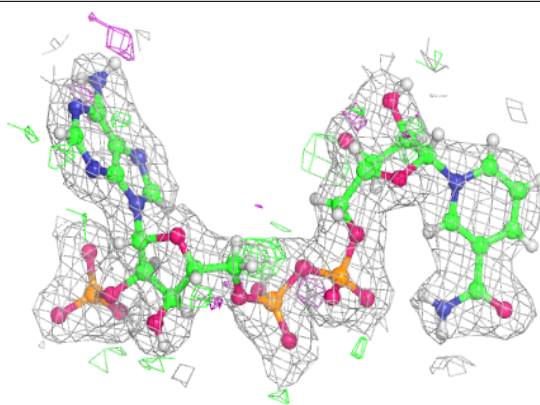
In the following table, the Atoms column lists the number of modelled atoms in the group and the number defined in the chemical component dictionary. The B-factors column lists the minimum, median, 95<sup>th</sup> percentile and maximum values of B factors of atoms in the group. The column labelled 'Q< 0.9' lists the number of atoms with occupancy less than 0.9.

Mol	Type	Chain	Res	Atoms	RSCC	RSR	B-factors( $\text{\AA}^2$ )	Q<0.9
3	EDO	A	502	4/4	0.96	0.10	23,29,35,37	0
2	NAP	A	501	48/48	0.97	0.14	16,25,36,44	0
2	NAP	B	501	48/48	0.97	0.11	19,29,45,66	0

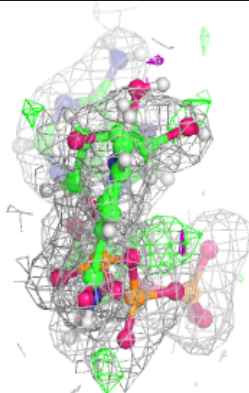
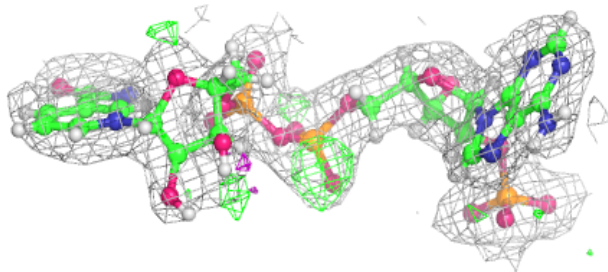
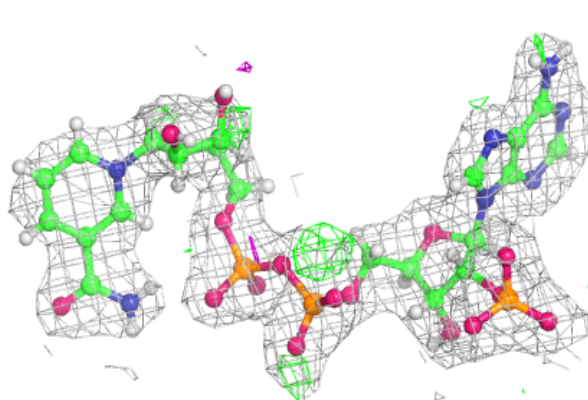
The following is a graphical depiction of the model fit to experimental electron density of all instances of the Ligand of Interest. In addition, ligands with molecular weight > 250 and outliers as shown on the geometry validation Tables will also be included. Each fit is shown from different orientation to approximate a three-dimensional view.

**Electron density around NAP A 501:**

$2mF_o-DF_c$  (at 0.7 rmsd) in gray  
 $mF_o-DF_c$  (at 3 rmsd) in purple (negative)  
and green (positive)

**Electron density around NAP B 501:**

$2mF_o-DF_c$  (at 0.7 rmsd) in gray  
 $mF_o-DF_c$  (at 3 rmsd) in purple (negative)  
and green (positive)



## 6.5 Other polymers [i](#)

There are no such residues in this entry.