



Full wwPDB X-ray Structure Validation Report ⓘ

May 14, 2020 – 11:40 am BST

PDB ID : 2C5V
Title : Differential Binding Of Inhibitors To Active And Inactive Cdk2 Provides Insights For Drug Design
Authors : Kontopidis, G.; McInnes, C.; Pandalaneni, S.R.; McNae, I.; Gibson, D.; Mezna, M.; Thomas, M.; Wood, G.; Wang, S.; Walkinshaw, M.D.; Fischer, P.M.
Deposited on : 2005-11-02
Resolution : 2.90 Å(reported)

This is a Full wwPDB X-ray Structure Validation Report for a publicly released PDB entry.

We welcome your comments at validation@mail.wwpdb.org

A user guide is available at

<https://www.wwpdb.org/validation/2017/XrayValidationReportHelp>

with specific help available everywhere you see the ⓘ symbol.

The following versions of software and data (see [references ⓘ](#)) were used in the production of this report:

MolProbity : 4.02b-467
Mogul : 1.8.5 (274361), CSD as541be (2020)
Xtriage (Phenix) : 1.13
EDS : 2.11
buster-report : 1.1.7 (2018)
Percentile statistics : 20191225.v01 (using entries in the PDB archive December 25th 2019)
Refmac : 5.8.0158
CCP4 : 7.0.044 (Gargrove)
Ideal geometry (proteins) : Engh & Huber (2001)
Ideal geometry (DNA, RNA) : Parkinson et al. (1996)
Validation Pipeline (wwPDB-VP) : 2.11

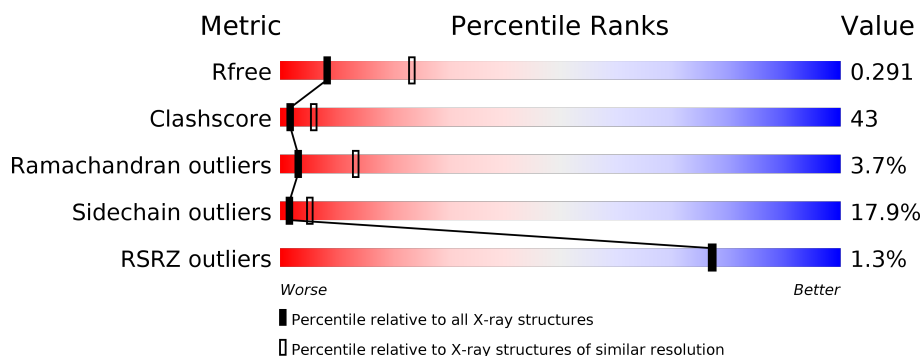
1 Overall quality at a glance ⓘ

The following experimental techniques were used to determine the structure:

X-RAY DIFFRACTION

The reported resolution of this entry is 2.90 Å.

Percentile scores (ranging between 0-100) for global validation metrics of the entry are shown in the following graphic. The table shows the number of entries on which the scores are based.



Metric	Whole archive (#Entries)	Similar resolution (#Entries, resolution range(Å))
R_{free}	130704	1957 (2.90-2.90)
Clashscore	141614	2172 (2.90-2.90)
Ramachandran outliers	138981	2115 (2.90-2.90)
Sidechain outliers	138945	2117 (2.90-2.90)
RSRZ outliers	127900	1906 (2.90-2.90)

The table below summarises the geometric issues observed across the polymeric chains and their fit to the electron density. The red, orange, yellow and green segments on the lower bar indicate the fraction of residues that contain outliers for ≥ 3 , 2, 1 and 0 types of geometric quality criteria respectively. A grey segment represents the fraction of residues that are not modelled. The numeric value for each fraction is indicated below the corresponding segment, with a dot representing fractions $\leq 5\%$. The upper red bar (where present) indicates the fraction of residues that have poor fit to the electron density. The numeric value is given above the bar.

Mol	Chain	Length	Quality of chain
1	A	298	<div> <div>%</div> <div> <div></div> <div>39%</div> <div>45%</div> <div>13%</div> <div>..</div> </div> </div>
1	C	298	<div> <div>2%</div> <div> <div></div> <div>40%</div> <div>46%</div> <div>12%</div> <div>..</div> </div> </div>
2	B	259	<div> <div>%</div> <div> <div></div> <div>42%</div> <div>45%</div> <div>11%</div> <div>.</div> </div> </div>
2	D	259	<div> <div>%</div> <div> <div></div> <div>48%</div> <div>41%</div> <div>10%</div> <div>.</div> </div> </div>
3	F	9	<div> <div></div> <div> <div>22%</div> <div>22%</div> <div>56%</div> </div> </div>
3	H	9	<div> <div>11%</div> <div> <div>11%</div> <div>67%</div> <div>11%</div> <div>11%</div> </div> </div>

The following table lists non-polymeric compounds, carbohydrate monomers and non-standard residues in protein, DNA, RNA chains that are outliers for geometric or electron-density-fit criteria:

Mol	Type	Chain	Res	Chirality	Geometry	Clashes	Electron density
3	PFF	F	508	-	-	X	-
4	CK4	A	1297	-	-	X	-

2 Entry composition

There are 5 unique types of molecules in this entry. The entry contains 9289 atoms, of which 0 are hydrogens and 0 are deuteriums.

In the tables below, the ZeroOcc column contains the number of atoms modelled with zero occupancy, the AltConf column contains the number of residues with at least one atom in alternate conformation and the Trace column contains the number of residues modelled with at most 2 atoms.

- Molecule 1 is a protein called CELL DIVISION PROTEIN KINASE 2.

Mol	Chain	Residues	Atoms					ZeroOcc	AltConf	Trace
1	A	296	Total	C	N	O	S	0	0	0
			2378	1547	403	420	8			
1	C	296	Total	C	N	O	S	0	1	0
			2384	1550	406	420	8			

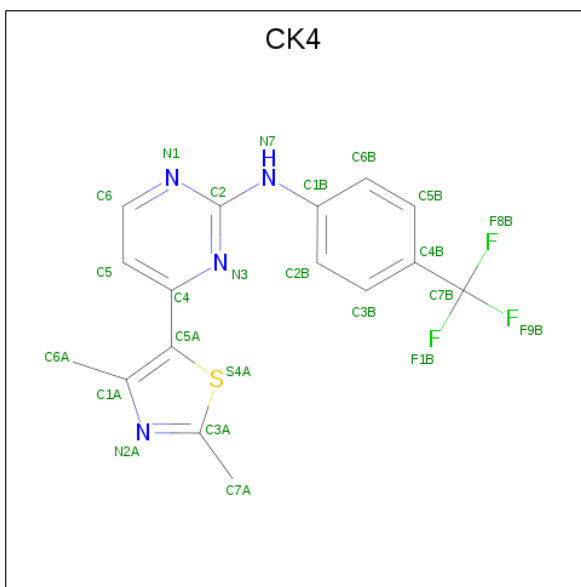
- Molecule 2 is a protein called CYCLIN A2.

Mol	Chain	Residues	Atoms					ZeroOcc	AltConf	Trace
2	B	258	Total	C	N	O	S	0	0	0
			2083	1350	339	383	11			
2	D	258	Total	C	N	O	S	0	0	0
			2084	1350	339	384	11			

- Molecule 3 is a protein called ALA-ALA-ABA-ARG-SER-LEU-ILE-PFF-NH2.

Mol	Chain	Residues	Atoms					ZeroOcc	AltConf	Trace
3	F	9	Total	C	F	N	O	0	0	1
			62	40	1	12	9			
3	H	9	Total	C	F	N	O	0	0	1
			62	40	1	12	9			

- Molecule 4 is 4-(2,4-DIMETHYL-1,3-THIAZOL-5-YL)-N-[4-(TRIFLUOROMETHYL)PHE NYL]PYRIMIDIN-2-AMINE (three-letter code: CK4) (formula: C₁₆H₁₃F₃N₄S).



Mol	Chain	Residues	Atoms					ZeroOcc	AltConf
4	A	1	Total	C	F	N	S	0	0
			24	16	3	4	1		
4	C	1	Total	C	F	N	S	0	0
			24	16	3	4	1		

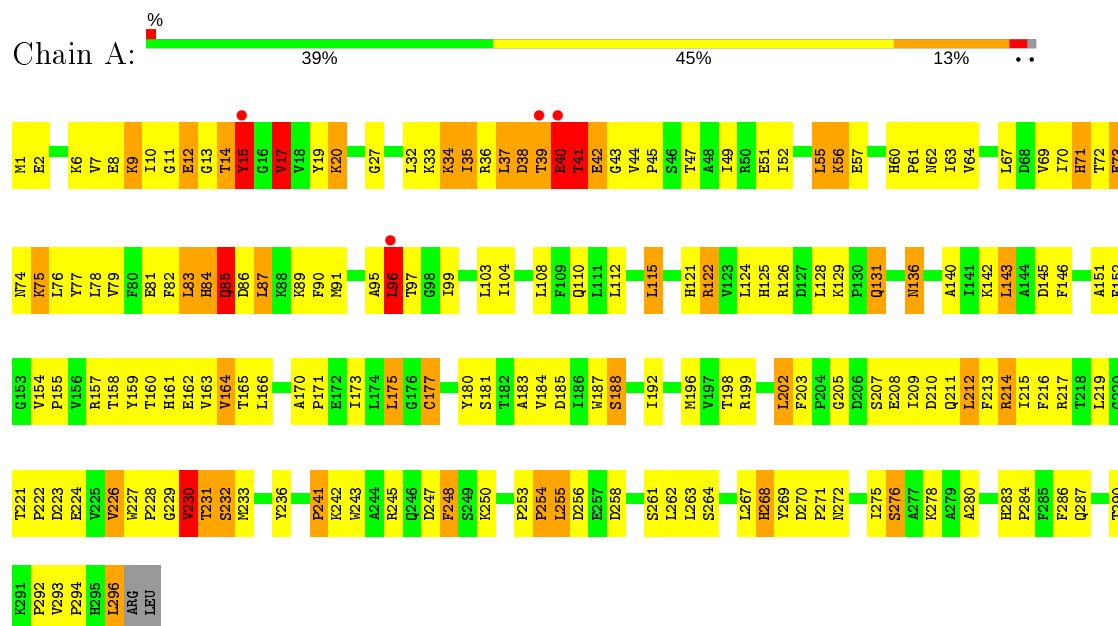
- Molecule 5 is water.

Mol	Chain	Residues	Atoms		ZeroOcc	AltConf
5	A	48	Total	O	0	0
			48	48		
5	B	44	Total	O	0	0
			44	44		
5	C	39	Total	O	0	0
			39	39		
5	D	52	Total	O	0	0
			52	52		
5	F	2	Total	O	0	0
			2	2		
5	H	3	Total	O	0	0
			3	3		

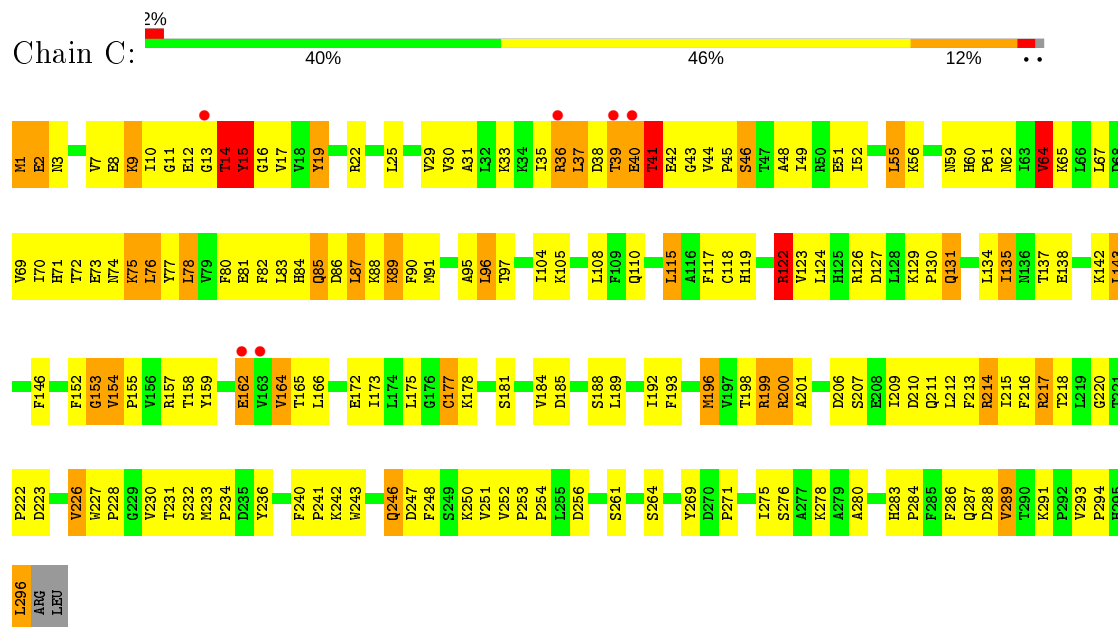
3 Residue-property plots

These plots are drawn for all protein, RNA and DNA chains in the entry. The first graphic for a chain summarises the proportions of the various outlier classes displayed in the second graphic. The second graphic shows the sequence view annotated by issues in geometry and electron density. Residues are color-coded according to the number of geometric quality criteria for which they contain at least one outlier: green = 0, yellow = 1, orange = 2 and red = 3 or more. A red dot above a residue indicates a poor fit to the electron density ($RSRZ > 2$). Stretches of 2 or more consecutive residues without any outlier are shown as a green connector. Residues present in the sample, but not in the model, are shown in grey.

• Molecule 1: CELL DIVISION PROTEIN KINASE 2



• Molecule 1: CELL DIVISION PROTEIN KINASE 2



4 Data and refinement statistics

Property	Value	Source
Space group	P 21 21 21	Depositor
Cell constants a, b, c, α , β , γ	74.50Å 114.55Å 156.99Å 90.00° 90.00° 90.00°	Depositor
Resolution (Å)	10.00 – 2.90 11.93 – 2.90	Depositor EDS
% Data completeness (in resolution range)	84.5 (10.00-2.90) 84.5 (11.93-2.90)	Depositor EDS
R_{merge}	0.10	Depositor
R_{sym}	(Not available)	Depositor
$\langle I/\sigma(I) \rangle$ ¹	2.46 (at 2.92Å)	Xtriage
Refinement program	REFMAC 5.2.0005	Depositor
R, R_{free}	0.171 , 0.282 0.182 , 0.291	Depositor DCC
R_{free} test set	1029 reflections (4.06%)	wwPDB-VP
Wilson B-factor (Å ²)	46.1	Xtriage
Anisotropy	0.049	Xtriage
Bulk solvent k_{sol} (e/Å ³), B_{sol} (Å ²)	0.35 , 59.8	EDS
L-test for twinning ²	$\langle L \rangle = 0.49$, $\langle L^2 \rangle = 0.32$	Xtriage
Estimated twinning fraction	No twinning to report.	Xtriage
F_o, F_c correlation	0.94	EDS
Total number of atoms	9289	wwPDB-VP
Average B, all atoms (Å ²)	38.0	wwPDB-VP

Xtriage's analysis on translational NCS is as follows: *The largest off-origin peak in the Patterson function is 3.77% of the height of the origin peak. No significant pseudotranslation is detected.*

¹Intensities estimated from amplitudes.

²Theoretical values of $\langle |L| \rangle$, $\langle L^2 \rangle$ for acentric reflections are 0.5, 0.333 respectively for untwinned datasets, and 0.375, 0.2 for perfectly twinned datasets.

5 Model quality [i](#)

5.1 Standard geometry [i](#)

Bond lengths and bond angles in the following residue types are not validated in this section: ABA, NH2, CK4, PFF

The Z score for a bond length (or angle) is the number of standard deviations the observed value is removed from the expected value. A bond length (or angle) with $|Z| > 5$ is considered an outlier worth inspection. RMSZ is the root-mean-square of all Z scores of the bond lengths (or angles).

Mol	Chain	Bond lengths		Bond angles	
		RMSZ	# $ Z > 5$	RMSZ	# $ Z > 5$
1	A	0.56	0/2440	0.86	2/3313 (0.1%)
1	C	0.55	1/2451 (0.0%)	0.84	1/3327 (0.0%)
2	B	0.55	0/2133	0.84	2/2897 (0.1%)
2	D	0.57	0/2134	0.86	1/2897 (0.0%)
3	F	1.21	1/41 (2.4%)	1.70	1/52 (1.9%)
3	H	1.21	1/41 (2.4%)	2.18	3/52 (5.8%)
All	All	0.57	3/9240 (0.0%)	0.87	10/12538 (0.1%)

Chiral center outliers are detected by calculating the chiral volume of a chiral center and verifying if the center is modelled as a planar moiety or with the opposite hand. A planarity outlier is detected by checking planarity of atoms in a peptide group, atoms in a mainchain group or atoms of a sidechain that are expected to be planar.

Mol	Chain	#Chirality outliers	#Planarity outliers
1	A	0	6
1	C	0	2
2	B	0	4
2	D	0	6
3	F	0	1
3	H	0	1
All	All	0	20

All (3) bond length outliers are listed below:

Mol	Chain	Res	Type	Atoms	Z	Observed(Å)	Ideal(Å)
3	F	504	ARG	CB-CG	-6.92	1.33	1.52
3	H	504	ARG	CB-CG	-6.88	1.33	1.52
1	C	177	CYS	CB-SG	-5.01	1.73	1.81

All (10) bond angle outliers are listed below:

Mol	Chain	Res	Type	Atoms	Z	Observed(°)	Ideal(°)
3	H	504	ARG	NE-CZ-NH2	-7.77	116.42	120.30
2	B	175	VAL	CB-CA-C	6.16	123.10	111.40
2	D	205	ASP	CB-CG-OD1	-6.04	112.86	118.30
3	F	504	ARG	NE-CZ-NH2	-5.79	117.41	120.30
1	C	64	VAL	CB-CA-C	-5.57	100.81	111.40
1	A	230	VAL	CB-CA-C	-5.54	100.88	111.40
3	H	504	ARG	CA-CB-CG	5.50	125.49	113.40
2	B	175	VAL	C-N-CD	5.17	139.27	128.40
3	H	504	ARG	NE-CZ-NH1	5.14	122.87	120.30
1	A	17	VAL	N-CA-C	5.02	124.55	111.00

There are no chirality outliers.

All (20) planarity outliers are listed below:

Mol	Chain	Res	Type	Group
1	A	177	CYS	Peptide
1	A	19	TYR	Peptide
1	A	35	ILE	Peptide
1	A	41	THR	Peptide
1	A	83	LEU	Peptide
1	A	85	GLN	Mainchain
2	B	175	VAL	Mainchain
2	B	270	ILE	Peptide
2	B	424	LEU	Mainchain
2	B	429	THR	Peptide
1	C	19	TYR	Peptide
1	C	41	THR	Mainchain
2	D	179	HIS	Sidechain
2	D	206	ILE	Peptide
2	D	271	TYR	Mainchain
2	D	344	ALA	Peptide
2	D	345	ASP	Peptide
2	D	347	TYR	Sidechain
3	F	501	ALA	Peptide
3	H	504	ARG	Sidechain

5.2 Too-close contacts ⓘ

In the following table, the Non-H and H(model) columns list the number of non-hydrogen atoms and hydrogen atoms in the chain respectively. The H(added) column lists the number of hydrogen atoms added and optimized by MolProbity. The Clashes column lists the number of clashes within the asymmetric unit, whereas Symm-Clashes lists symmetry related clashes.

Mol	Chain	Non-H	H(model)	H(added)	Clashes	Symm-Clashes
1	A	2378	0	2426	253	0
1	C	2384	0	2435	211	1
2	B	2083	0	2107	181	1
2	D	2084	0	2107	150	0
3	F	62	0	62	22	0
3	H	62	0	63	11	0
4	A	24	0	13	9	0
4	C	24	0	13	5	0
5	A	48	0	0	27	0
5	B	44	0	0	15	0
5	C	39	0	0	7	0
5	D	52	0	0	15	0
5	F	2	0	0	0	0
5	H	3	0	0	1	0
All	All	9289	0	9226	789	1

The all-atom clashscore is defined as the number of clashes found per 1000 atoms (including hydrogen atoms). The all-atom clashscore for this structure is 43.

All (789) close contacts within the same asymmetric unit are listed below, sorted by their clash magnitude.

Atom-1	Atom-2	Interatomic distance (Å)	Clash overlap (Å)
2:B:210:MET:HG3	3:F:508:PFF:CD2	1.58	1.33
1:A:71:HIS:CE1	2:B:296:HIS:CE1	2.24	1.26
1:A:163:VAL:HG12	5:A:2026:HOH:O	1.29	1.23
1:A:268:HIS:CG	5:A:2044:HOH:O	1.86	1.23
5:B:2015:HOH:O	3:F:502:ALA:HB1	1.33	1.22
1:A:40:GLU:O	1:A:41:THR:HG23	1.41	1.18
5:D:2018:HOH:O	3:H:503:ABA:HG1	1.43	1.17
1:A:164:VAL:HG21	5:A:2023:HOH:O	1.46	1.16
1:C:131:GLN:H	1:C:131:GLN:NE2	1.44	1.15
1:A:11:GLY:HA3	5:A:2005:HOH:O	1.45	1.12
1:C:15:TYR:CE2	1:C:33:LYS:HD3	1.85	1.11
1:C:39:THR:HG21	1:C:43:GLY:HA2	1.21	1.10
1:A:57:GLU:OE1	2:B:185:TYR:OH	1.74	1.05
2:B:210:MET:HG3	3:F:508:PFF:HD2	1.36	1.05
1:C:214:ARG:HG2	1:C:214:ARG:HH11	1.21	1.04
1:C:39:THR:HG21	1:C:43:GLY:CA	1.86	1.03
3:F:501:ALA:CB	3:F:502:ALA:HB2	1.88	1.03
3:F:501:ALA:HB1	3:F:502:ALA:HB2	1.39	1.03
2:D:178:TYR:O	2:D:181:ASP:N	1.91	1.03
1:C:162:GLU:HG3	1:C:164:VAL:HG23	1.41	1.03

Continued on next page...

Continued from previous page...

Atom-1	Atom-2	Interatomic distance (Å)	Clash overlap (Å)
2:D:388:LYS:O	2:D:392:MET:HG2	1.60	1.02
1:A:85:GLN:HA	4:A:1297:CK4:C5B	1.90	1.01
2:B:282:THR:O	2:B:285:THR:HG22	1.60	0.99
2:D:404:HIS:CD2	2:D:406:GLN:HB2	1.97	0.99
1:C:85:GLN:HE22	1:C:89:LYS:HB3	1.29	0.98
1:A:159:TYR:HD2	5:A:2022:HOH:O	1.48	0.96
1:A:37:LEU:HA	1:A:39:THR:OG1	1.65	0.96
1:A:15:TYR:CE2	1:A:33:LYS:HD2	1.99	0.96
1:C:286:PHE:O	1:C:289:VAL:HG12	1.64	0.95
1:A:95:ALA:O	1:A:96:LEU:HB3	1.64	0.95
1:C:162:GLU:CG	1:C:164:VAL:HG23	1.96	0.95
5:B:2015:HOH:O	3:F:502:ALA:CB	1.97	0.95
1:A:71:HIS:CE1	2:B:296:HIS:NE2	2.35	0.94
2:D:190:GLU:HG3	2:D:351:LEU:HD22	1.50	0.94
2:B:210:MET:CG	3:F:508:PFF:CD2	2.46	0.93
1:C:214:ARG:CG	1:C:214:ARG:HH11	1.81	0.93
1:C:38:ASP:O	1:C:40:GLU:N	2.02	0.93
1:C:85:GLN:NE2	1:C:89:LYS:HB3	1.84	0.92
2:B:412:LYS:HA	5:B:2039:HOH:O	1.69	0.92
1:C:115:LEU:HD11	1:C:185:ASP:HB3	1.52	0.92
2:D:431:ASN:O	2:D:432:LEU:HD22	1.70	0.92
1:A:39:THR:HG21	1:A:43:GLY:C	1.91	0.91
1:A:216:PHE:CE1	1:A:222:PRO:HD3	2.06	0.91
2:B:282:THR:O	2:B:285:THR:CG2	2.18	0.91
2:D:229:ASN:HB3	5:D:2029:HOH:O	1.70	0.90
1:C:131:GLN:HE21	1:C:131:GLN:N	1.69	0.90
1:A:227:TRP:HB3	1:A:230:VAL:HG22	1.53	0.90
2:B:404:HIS:HA	5:B:2036:HOH:O	1.72	0.90
1:C:135:ILE:HD12	5:C:2014:HOH:O	1.71	0.89
2:D:374:GLU:HG3	5:D:2034:HOH:O	1.72	0.89
1:C:39:THR:CG2	1:C:43:GLY:HA2	2.03	0.89
1:C:13:GLY:O	1:C:14:THR:O	1.90	0.89
1:C:127:ASP:OD1	1:C:164:VAL:HG12	1.73	0.88
3:F:501:ALA:CB	3:F:502:ALA:CB	2.51	0.88
1:C:127:ASP:OD1	1:C:164:VAL:CG1	2.20	0.88
1:A:15:TYR:HB3	1:A:35:ILE:HG23	1.55	0.88
1:C:44:VAL:O	2:D:266:LYS:NZ	2.06	0.87
2:B:404:HIS:NE2	2:B:406:GLN:HB2	1.89	0.87
1:A:39:THR:HG21	1:A:43:GLY:O	1.73	0.87
1:A:242:LYS:HE2	5:A:2040:HOH:O	1.74	0.87
2:B:190:GLU:HG3	2:B:351:LEU:HD22	1.56	0.86

Continued on next page...

Continued from previous page...

Atom-1	Atom-2	Interatomic distance (Å)	Clash overlap (Å)
1:C:39:THR:HG22	1:C:39:THR:O	1.74	0.86
1:A:37:LEU:HD22	1:A:39:THR:OG1	1.76	0.86
1:C:294:PRO:HG2	1:C:296:LEU:HD11	1.57	0.86
1:C:131:GLN:HE21	1:C:131:GLN:H	0.90	0.85
1:A:60:HIS:HD2	1:A:62:ASN:H	1.19	0.85
1:C:253:PRO:HG2	1:C:254:PRO:HD3	1.54	0.85
1:C:76:LEU:HD12	1:C:77:TYR:N	1.92	0.85
1:A:214:ARG:HH11	1:A:214:ARG:HG2	1.41	0.85
2:D:178:TYR:HE2	5:D:2006:HOH:O	1.59	0.85
1:C:1:MET:HA	1:C:1:MET:HE2	1.60	0.84
1:C:39:THR:CG2	1:C:43:GLY:CA	2.56	0.84
1:A:60:HIS:CD2	1:A:62:ASN:H	1.96	0.84
2:D:404:HIS:HD2	2:D:406:GLN:HB2	1.41	0.84
1:A:71:HIS:HE1	2:B:296:HIS:CE1	1.92	0.83
2:B:200:MET:HG2	2:B:208:ASN:HD22	1.42	0.83
1:A:40:GLU:O	1:A:41:THR:CG2	2.26	0.83
2:D:319:PHE:CD2	2:D:330:GLU:HG2	2.13	0.83
3:H:501:ALA:N	3:H:502:ALA:HB3	1.93	0.83
1:C:39:THR:O	1:C:39:THR:CG2	2.27	0.83
1:C:231:THR:HA	1:C:236:TYR:CD1	2.13	0.82
1:A:162:GLU:HB2	5:A:2024:HOH:O	1.78	0.82
2:B:430:LEU:HB3	2:B:432:LEU:HD23	1.61	0.82
1:A:73:GLU:CG	1:C:2:GLU:HG2	2.10	0.82
1:A:15:TYR:CD2	1:A:33:LYS:HD2	2.15	0.81
1:A:37:LEU:C	1:A:39:THR:H	1.82	0.81
1:A:73:GLU:CD	1:C:2:GLU:HG2	2.01	0.81
1:A:89:LYS:HE2	5:A:2018:HOH:O	1.82	0.80
2:D:210:MET:HG3	3:H:508:PFF:HD2	1.64	0.80
2:D:400:LYS:HD2	5:D:2041:HOH:O	1.80	0.80
1:C:52:ILE:O	1:C:56:LYS:HG3	1.81	0.80
1:A:217:ARG:HD2	5:A:2035:HOH:O	1.81	0.79
2:B:332:LEU:HD23	2:B:363:ALA:HA	1.63	0.79
1:C:131:GLN:N	1:C:131:GLN:NE2	2.26	0.79
1:A:175:LEU:HD21	1:A:212:LEU:HD21	1.65	0.79
3:F:501:ALA:HB3	3:F:502:ALA:CB	2.11	0.79
2:B:209:SER:HA	5:B:2014:HOH:O	1.81	0.79
2:B:404:HIS:CD2	2:B:405:ALA:N	2.50	0.78
1:C:35:ILE:HD12	1:C:76:LEU:HG	1.64	0.78
1:C:60:HIS:HD2	1:C:62:ASN:H	1.31	0.78
1:A:20:LYS:HD3	1:A:82:PHE:CE2	2.18	0.78
1:A:154:VAL:HG21	2:B:312:ASN:HD21	1.49	0.78

Continued on next page...

Continued from previous page...

Atom-1	Atom-2	Interatomic distance (Å)	Clash overlap (Å)
2:D:183:HIS:HB2	2:D:317:GLN:HE22	1.46	0.78
1:A:13:GLY:O	1:A:14:THR:O	2.02	0.78
2:B:319:PHE:CE2	2:B:330:GLU:HG2	2.20	0.77
2:D:335:PHE:HE1	2:D:409:ILE:HG22	1.48	0.77
2:B:207:THR:HG22	2:B:210:MET:H	1.50	0.77
1:A:164:VAL:CG2	5:A:2023:HOH:O	2.12	0.77
1:A:51:GLU:HG2	1:A:55:LEU:HD22	1.66	0.76
1:A:163:VAL:HG13	5:A:2025:HOH:O	1.84	0.76
1:C:162:GLU:CD	1:C:164:VAL:HG23	2.05	0.76
1:C:1:MET:HA	1:C:1:MET:CE	2.15	0.76
2:D:203:GLN:NE2	2:D:246:MET:O	2.18	0.76
1:C:212:LEU:HD22	1:C:216:PHE:CZ	2.21	0.76
2:D:388:LYS:O	2:D:392:MET:CG	2.33	0.76
1:C:60:HIS:CD2	1:C:62:ASN:H	2.04	0.75
2:D:210:MET:HG2	3:H:508:PFF:CD2	2.15	0.75
1:A:9:LYS:NZ	1:A:12:GLU:OE1	2.20	0.75
2:D:175:VAL:HG12	2:D:179:HIS:CG	2.21	0.75
1:A:175:LEU:CD2	1:A:212:LEU:HD11	2.17	0.75
2:D:178:TYR:CE2	5:D:2006:HOH:O	2.37	0.75
2:B:404:HIS:HD2	2:B:405:ALA:N	1.84	0.75
2:D:207:THR:HG22	2:D:210:MET:CE	2.17	0.75
1:A:39:THR:HG21	1:A:43:GLY:CA	2.16	0.74
2:B:220:GLU:OE2	3:F:501:ALA:HA	1.87	0.74
2:B:404:HIS:CD2	2:B:406:GLN:HB2	2.22	0.74
2:D:335:PHE:CE1	2:D:409:ILE:HG22	2.21	0.74
1:C:15:TYR:CD2	1:C:33:LYS:HD3	2.22	0.74
1:A:216:PHE:CE1	1:A:222:PRO:CD	2.71	0.74
2:B:324:PRO:HA	5:B:2030:HOH:O	1.86	0.74
4:C:1297:CK4:N3	4:C:1297:CK4:H2B	2.03	0.73
2:D:207:THR:CG2	2:D:210:MET:HE2	2.19	0.73
1:C:7:VAL:HG12	1:C:8:GLU:HG2	1.71	0.73
1:C:37:LEU:C	1:C:39:THR:H	1.90	0.72
1:A:104:ILE:HD13	1:A:196:MET:HB3	1.71	0.72
2:D:233:HIS:HD2	5:D:2026:HOH:O	1.71	0.72
2:D:207:THR:CG2	2:D:210:MET:CE	2.67	0.72
2:D:319:PHE:CE2	2:D:330:GLU:HG2	2.24	0.72
1:A:13:GLY:O	5:A:2007:HOH:O	2.07	0.72
1:A:13:GLY:C	1:A:14:THR:O	2.27	0.72
2:D:417:LYS:O	2:D:417:LYS:HG2	1.90	0.72
1:A:71:HIS:ND1	2:B:296:HIS:CE1	2.56	0.71
2:B:178:TYR:O	2:B:181:ASP:N	2.23	0.71

Continued on next page...

Continued from previous page...

Atom-1	Atom-2	Interatomic distance (Å)	Clash overlap (Å)
1:C:217:ARG:HD2	5:C:2030:HOH:O	1.91	0.71
1:A:91:MET:HE3	1:A:196:MET:HA	1.72	0.71
2:B:210:MET:HG3	3:F:508:PFF:CE2	2.19	0.71
1:C:78:LEU:N	1:C:78:LEU:HD23	2.05	0.71
1:A:145:ASP:OD2	4:A:1297:CK4:H7A1	1.91	0.71
1:A:162:GLU:HG3	1:A:164:VAL:HG23	1.72	0.71
1:A:121:HIS:O	1:A:122:ARG:HD2	1.91	0.70
2:B:217:TRP:HZ2	2:B:281:ILE:HG23	1.57	0.70
2:D:392:MET:HA	2:D:392:MET:HE3	1.73	0.70
1:A:42:GLU:HA	2:B:275:VAL:CG2	2.21	0.70
1:C:39:THR:CG2	1:C:43:GLY:N	2.54	0.70
1:C:253:PRO:CG	1:C:254:PRO:HD3	2.20	0.70
2:D:332:LEU:HD23	2:D:363:ALA:HA	1.72	0.70
1:C:115:LEU:HD13	1:C:119:HIS:CE1	2.27	0.70
1:A:42:GLU:O	2:B:266:LYS:NZ	2.14	0.70
2:B:200:MET:HG2	2:B:208:ASN:ND2	2.06	0.70
3:F:501:ALA:HB3	3:F:502:ALA:HB2	1.70	0.70
2:B:323:GLN:H	2:B:323:GLN:NE2	1.90	0.70
2:D:210:MET:CG	3:H:508:PFF:CD2	2.69	0.70
2:D:207:THR:HG22	2:D:210:MET:HE2	1.73	0.70
1:A:162:GLU:OE1	1:A:164:VAL:CG2	2.40	0.69
1:A:34:LYS:HB2	1:A:77:TYR:CE2	2.27	0.69
2:B:210:MET:CG	3:F:508:PFF:HD2	2.16	0.69
1:C:177:CYS:HB2	5:C:2024:HOH:O	1.90	0.69
2:D:287:THR:HG23	2:D:290:GLN:HG3	1.74	0.69
2:D:401:ALA:HA	5:D:2040:HOH:O	1.92	0.69
2:B:404:HIS:HD2	2:B:406:GLN:N	1.90	0.69
2:D:431:ASN:C	2:D:432:LEU:HD22	2.12	0.69
1:C:39:THR:O	1:C:41:THR:N	2.25	0.69
1:C:15:TYR:CE2	1:C:33:LYS:CD	2.72	0.69
2:B:200:MET:CG	2:B:208:ASN:HD22	2.07	0.68
2:D:363:ALA:O	2:D:367:VAL:HG23	1.93	0.68
1:A:227:TRP:HB3	1:A:230:VAL:CG2	2.23	0.68
1:A:45:PRO:O	1:A:49:ILE:HG12	1.93	0.68
1:C:175:LEU:HD23	1:C:212:LEU:HD11	1.76	0.68
1:C:2:GLU:OE2	1:C:2:GLU:N	2.23	0.68
1:C:64:VAL:HG22	1:C:143:LEU:O	1.93	0.68
2:B:218:LEU:HD22	2:B:261:MET:SD	2.33	0.68
2:D:207:THR:HG22	2:D:210:MET:HB2	1.75	0.68
1:A:75:LYS:HE3	1:A:77:TYR:OH	1.94	0.68
1:A:72:THR:HB	5:A:2016:HOH:O	1.93	0.68

Continued on next page...

Continued from previous page...

Atom-1	Atom-2	Interatomic distance (Å)	Clash overlap (Å)
2:B:187:ARG:HD2	2:B:190:GLU:OE2	1.93	0.68
1:C:15:TYR:OH	1:C:51:GLU:OE1	2.10	0.68
1:A:51:GLU:HG3	1:A:146:PHE:HB2	1.75	0.67
1:A:177:CYS:HB3	1:A:233:MET:HE2	1.76	0.67
2:B:271:TYR:CD1	2:B:271:TYR:N	2.63	0.67
2:D:345:ASP:OD2	2:D:346:PRO:CD	2.42	0.67
2:D:221:VAL:HG22	2:D:281:ILE:HD12	1.77	0.67
1:C:76:LEU:HD12	1:C:76:LEU:C	2.15	0.67
2:D:225:TYR:CE1	2:D:281:ILE:HG21	2.29	0.67
1:C:13:GLY:O	1:C:14:THR:C	2.32	0.67
1:C:39:THR:HG23	1:C:43:GLY:N	2.10	0.67
1:A:294:PRO:HG2	1:A:296:LEU:HD11	1.75	0.67
2:B:430:LEU:CB	2:B:432:LEU:HD23	2.25	0.67
1:A:227:TRP:O	1:A:228:PRO:C	2.33	0.66
2:D:178:TYR:O	2:D:179:HIS:C	2.33	0.66
1:A:84:HIS:O	4:A:1297:CK4:H5B	1.95	0.66
2:D:361:HIS:CE1	2:D:371:SER:HB3	2.31	0.66
1:C:85:GLN:HA	4:C:1297:CK4:C5B	2.25	0.66
1:A:143:LEU:HD23	1:A:143:LEU:N	2.10	0.66
2:D:207:THR:HG22	2:D:210:MET:H	1.59	0.66
2:D:424:LEU:HD13	5:D:2048:HOH:O	1.96	0.66
1:A:232:SER:OG	1:A:232:SER:O	2.12	0.66
2:B:175:VAL:O	2:B:179:HIS:CG	2.49	0.66
2:B:396:GLN:HA	2:B:396:GLN:OE1	1.95	0.66
1:C:15:TYR:HB3	1:C:35:ILE:HG23	1.76	0.66
2:D:221:VAL:HG13	2:D:281:ILE:HD13	1.78	0.66
2:D:384:LEU:O	2:D:384:LEU:HD12	1.96	0.66
1:C:218:THR:HA	1:C:246:GLN:HE21	1.61	0.65
1:C:294:PRO:HG2	1:C:296:LEU:CD1	2.26	0.65
1:A:247:ASP:O	1:A:250:LYS:HB2	1.96	0.65
1:A:263:LEU:HD12	1:A:263:LEU:O	1.97	0.65
1:A:51:GLU:HG2	1:A:55:LEU:CD2	2.26	0.65
1:A:42:GLU:HA	2:B:275:VAL:HG21	1.77	0.65
1:C:214:ARG:NH1	1:C:214:ARG:CG	2.47	0.65
2:D:207:THR:HB	2:D:210:MET:CE	2.26	0.65
1:A:164:VAL:HG12	1:A:165:THR:HG22	1.79	0.65
3:F:501:ALA:HB3	3:F:502:ALA:HB3	1.79	0.65
1:A:38:ASP:O	1:A:40:GLU:N	2.24	0.65
1:A:175:LEU:HD21	1:A:212:LEU:HD11	1.78	0.65
2:B:207:THR:CG2	2:B:209:SER:HB3	2.27	0.65
2:B:338:GLU:OE1	2:B:412:LYS:NZ	2.30	0.65

Continued on next page...

Continued from previous page...

Atom-1	Atom-2	Interatomic distance (Å)	Clash overlap (Å)
2:B:404:HIS:CD2	2:B:406:GLN:N	2.66	0.64
2:B:430:LEU:HB3	2:B:432:LEU:CD2	2.27	0.64
1:C:3:ASN:HB2	5:C:2001:HOH:O	1.96	0.64
2:B:254:GLN:HG2	2:B:286:TYR:HE2	1.62	0.64
1:C:143:LEU:HD23	1:C:143:LEU:N	2.11	0.64
1:A:161:HIS:O	5:A:2022:HOH:O	2.15	0.64
1:A:39:THR:HG22	1:A:43:GLY:H	1.63	0.64
2:B:319:PHE:CD2	2:B:330:GLU:HG2	2.32	0.64
1:C:115:LEU:HD11	1:C:185:ASP:CB	2.26	0.64
1:C:95:ALA:O	1:C:96:LEU:HB3	1.98	0.64
1:A:85:GLN:OE1	1:A:296:LEU:HD23	1.98	0.63
1:A:15:TYR:HE2	1:A:33:LYS:HZ2	1.44	0.63
1:A:85:GLN:HA	4:A:1297:CK4:H5B	1.79	0.63
2:D:361:HIS:HE1	2:D:371:SER:HB3	1.63	0.63
2:B:283:ASP:O	2:B:285:THR:N	2.31	0.63
1:C:85:GLN:NE2	1:C:89:LYS:CB	2.58	0.63
1:C:9:LYS:C	1:C:9:LYS:HE3	2.19	0.63
2:D:221:VAL:CG2	2:D:281:ILE:CD1	2.76	0.63
1:A:253:PRO:O	1:A:255:LEU:N	2.31	0.63
1:C:39:THR:HA	1:C:41:THR:OG1	1.99	0.63
1:C:42:GLU:OE2	2:D:275:VAL:HG23	1.99	0.63
2:D:397:THR:HG23	5:D:2039:HOH:O	1.99	0.63
1:C:216:PHE:O	1:C:220:GLY:N	2.32	0.63
2:D:345:ASP:OD2	2:D:346:PRO:HD3	1.99	0.63
2:B:266:LYS:NZ	2:B:295:GLU:OE1	2.32	0.62
1:A:67:LEU:HB2	1:A:79:VAL:HG12	1.82	0.62
2:B:335:PHE:CZ	2:B:339:LEU:HD11	2.34	0.62
1:A:37:LEU:C	1:A:39:THR:N	2.52	0.62
2:B:200:MET:CG	2:B:208:ASN:ND2	2.63	0.62
1:C:214:ARG:HG2	1:C:214:ARG:NH1	2.02	0.62
1:A:231:THR:HA	1:A:236:TYR:CD1	2.35	0.62
2:B:288:LYS:HE2	5:B:2026:HOH:O	1.98	0.62
2:D:210:MET:CG	3:H:508:PFF:HD2	2.27	0.62
1:A:27:GLY:HA3	2:D:249:LEU:HD22	1.81	0.62
2:D:338:GLU:O	2:D:341:LEU:HB2	1.98	0.62
1:A:162:GLU:HA	5:A:2022:HOH:O	1.99	0.61
1:A:76:LEU:HD23	1:A:76:LEU:C	2.20	0.61
1:A:7:VAL:HG12	1:A:8:GLU:HG2	1.82	0.61
2:B:401:ALA:N	2:B:402:PRO:CD	2.63	0.61
1:A:268:HIS:ND1	5:A:2044:HOH:O	2.10	0.61
2:B:207:THR:HG23	2:B:209:SER:N	2.15	0.61

Continued on next page...

Continued from previous page...

Atom-1	Atom-2	Interatomic distance (Å)	Clash overlap (Å)
2:D:207:THR:CG2	2:D:210:MET:H	2.14	0.61
4:A:1297:CK4:H2B	4:A:1297:CK4:N3	2.16	0.61
1:A:121:HIS:HD2	2:B:185:TYR:CE1	2.19	0.61
1:A:71:HIS:ND1	2:B:296:HIS:NE2	2.49	0.61
1:A:108:LEU:HD11	1:A:112:LEU:HD11	1.82	0.61
2:B:194:LYS:O	2:B:195:PRO:O	2.19	0.61
1:C:39:THR:CG2	1:C:43:GLY:H	2.14	0.61
1:A:162:GLU:OE2	5:A:2024:HOH:O	2.16	0.61
2:B:277:GLU:CD	5:B:2023:HOH:O	2.39	0.61
1:C:138:GLU:H	1:C:138:GLU:CD	2.04	0.61
2:D:344:ALA:HB1	2:D:348:LEU:HD22	1.82	0.60
2:D:221:VAL:CG2	2:D:281:ILE:HD12	2.31	0.60
2:D:175:VAL:O	2:D:176:PRO:C	2.39	0.60
1:A:162:GLU:OE1	1:A:164:VAL:HG21	2.02	0.60
1:A:44:VAL:HG11	1:A:49:ILE:CD1	2.31	0.60
1:A:70:ILE:HB	1:A:77:TYR:HB2	1.82	0.60
1:C:152:PHE:C	1:C:154:VAL:H	2.05	0.60
1:C:91:MET:HE3	1:C:196:MET:HG3	1.82	0.60
2:D:388:LYS:N	2:D:389:PRO:HD2	2.16	0.60
1:A:96:LEU:HG	1:A:97:THR:HG23	1.84	0.60
2:B:175:VAL:O	2:B:179:HIS:ND1	2.35	0.60
2:B:401:ALA:N	2:B:402:PRO:HD3	2.17	0.60
1:A:294:PRO:HG2	1:A:296:LEU:CD1	2.32	0.59
1:A:39:THR:CG2	1:A:43:GLY:CA	2.80	0.59
1:A:202:LEU:HD22	1:A:203:PHE:CE1	2.37	0.59
1:C:77:TYR:C	1:C:78:LEU:HD23	2.23	0.59
2:D:178:TYR:O	2:D:180:GLU:N	2.35	0.59
1:A:211:GLN:O	1:A:212:LEU:C	2.41	0.59
1:A:89:LYS:CE	5:A:2018:HOH:O	2.47	0.59
1:C:15:TYR:HE2	1:C:33:LYS:HD3	1.60	0.59
2:D:346:PRO:O	2:D:349:LYS:HG3	2.03	0.59
2:D:221:VAL:HG22	2:D:281:ILE:CD1	2.31	0.59
2:B:175:VAL:HG13	2:B:176:PRO:HD3	1.84	0.59
2:D:342:ILE:O	2:D:342:ILE:HG22	2.01	0.59
2:B:207:THR:CG2	2:B:210:MET:H	2.16	0.59
2:B:268:GLU:HG3	2:B:268:GLU:O	2.00	0.59
1:C:175:LEU:CD2	1:C:212:LEU:HD11	2.33	0.59
1:A:34:LYS:HB2	1:A:77:TYR:CD2	2.38	0.58
1:A:39:THR:HG22	1:A:43:GLY:N	2.17	0.58
1:A:60:HIS:CG	1:A:61:PRO:HD2	2.38	0.58
2:B:297:LEU:O	2:B:301:VAL:HG23	2.03	0.58

Continued on next page...

Continued from previous page...

Atom-1	Atom-2	Interatomic distance (Å)	Clash overlap (Å)
2:B:414:LYS:O	2:B:415:ASN:C	2.41	0.58
1:C:36:ARG:HA	5:C:2008:HOH:O	2.03	0.58
1:A:83:LEU:O	4:A:1297:CK4:H6B	2.03	0.58
1:A:214:ARG:HG2	1:A:214:ARG:NH1	2.13	0.58
2:B:415:ASN:HB2	5:B:2040:HOH:O	2.02	0.58
1:A:2:GLU:CD	1:A:2:GLU:H	2.06	0.58
2:B:383:THR:O	2:B:386:SER:OG	2.21	0.58
1:A:188:SER:O	1:A:192:ILE:HG13	2.04	0.58
2:B:277:GLU:HG3	5:B:2023:HOH:O	2.04	0.58
1:C:105:LYS:NZ	1:C:288:ASP:OD1	2.37	0.58
1:C:177:CYS:HB3	1:C:233:MET:CE	2.33	0.58
2:D:190:GLU:HG3	2:D:351:LEU:CD2	2.30	0.58
1:A:81:GLU:HG3	1:A:83:LEU:HD11	1.84	0.58
1:C:104:ILE:HD13	1:C:196:MET:HB3	1.86	0.58
2:B:303:THR:O	2:B:303:THR:OG1	2.21	0.58
1:A:40:GLU:HG3	1:A:40:GLU:O	2.03	0.57
2:B:178:TYR:O	2:B:179:HIS:C	2.43	0.57
2:B:252:LYS:O	2:B:255:LEU:HB3	2.04	0.57
1:A:216:PHE:CD1	1:A:222:PRO:HD3	2.38	0.57
1:C:152:PHE:C	1:C:154:VAL:N	2.56	0.57
1:A:15:TYR:CB	1:A:35:ILE:HG23	2.32	0.57
2:B:415:ASN:ND2	5:B:2041:HOH:O	2.37	0.57
1:A:85:GLN:NE2	1:A:89:LYS:HB3	2.20	0.57
1:A:76:LEU:HD21	1:A:78:LEU:HD21	1.86	0.57
2:B:418:TYR:O	2:B:421:VAL:HG22	2.05	0.57
2:D:357:GLY:O	2:D:360:PHE:N	2.33	0.57
1:C:231:THR:HA	1:C:236:TYR:CE1	2.39	0.57
1:C:40:GLU:O	1:C:40:GLU:HG3	2.05	0.57
1:A:14:THR:OG1	1:A:15:TYR:CE2	2.56	0.57
1:A:241:PRO:HB2	1:A:243:TRP:CZ3	2.40	0.57
1:C:223:ASP:OD1	1:C:226:VAL:HG23	2.05	0.57
2:B:420:GLY:O	2:B:423:LEU:HB2	2.05	0.56
3:F:501:ALA:HB1	3:F:502:ALA:CB	2.21	0.56
1:A:95:ALA:O	1:A:96:LEU:CB	2.43	0.56
2:B:207:THR:HG22	2:B:210:MET:HB2	1.86	0.56
1:C:36:ARG:NH1	1:C:36:ARG:HG3	2.20	0.56
1:C:37:LEU:C	1:C:39:THR:N	2.58	0.56
1:A:177:CYS:HB3	1:A:233:MET:CE	2.35	0.56
1:A:87:LEU:O	1:A:87:LEU:HD22	2.06	0.56
1:C:123:VAL:HG12	1:C:124:LEU:N	2.20	0.56
2:D:431:ASN:HB2	5:D:2052:HOH:O	2.05	0.56

Continued on next page...

Continued from previous page...

Atom-1	Atom-2	Interatomic distance (Å)	Clash overlap (Å)
2:D:207:THR:HG22	2:D:210:MET:HE3	1.86	0.56
2:D:388:LYS:N	2:D:389:PRO:CD	2.67	0.56
2:B:220:GLU:OE1	3:F:504:ARG:NH2	2.39	0.56
1:A:270:ASP:OD1	1:A:270:ASP:C	2.44	0.56
2:D:225:TYR:HE1	2:D:281:ILE:HG21	1.67	0.56
2:B:312:ASN:C	2:B:312:ASN:ND2	2.59	0.56
1:C:154:VAL:O	1:C:155:PRO:C	2.43	0.56
1:C:90:PHE:CZ	1:C:294:PRO:CB	2.88	0.56
1:C:37:LEU:HD22	1:C:39:THR:OG1	2.05	0.56
2:D:321:HIS:HD1	2:D:375:SER:HB2	1.71	0.56
1:A:175:LEU:HD22	1:A:212:LEU:HD11	1.86	0.56
2:D:221:VAL:CG1	2:D:281:ILE:HD13	2.35	0.55
1:C:86:ASP:OD1	1:C:88:LYS:HB3	2.06	0.55
2:B:220:GLU:OE2	3:F:501:ALA:CA	2.55	0.55
2:D:195:PRO:HG2	5:D:2015:HOH:O	2.05	0.55
2:D:207:THR:CB	2:D:210:MET:CE	2.85	0.55
1:A:207:SER:O	1:A:208:GLU:C	2.43	0.55
1:A:154:VAL:O	1:A:155:PRO:C	2.45	0.55
1:A:115:LEU:HD11	1:A:185:ASP:HB3	1.88	0.55
2:B:404:HIS:CD2	2:B:404:HIS:C	2.79	0.55
2:B:404:HIS:CD2	2:B:406:GLN:H	2.23	0.55
1:A:202:LEU:HD13	1:A:203:PHE:CE2	2.42	0.55
2:B:396:GLN:O	2:B:400:LYS:HG3	2.07	0.55
1:C:218:THR:HG22	1:C:218:THR:O	2.06	0.55
1:C:70:ILE:HB	1:C:77:TYR:HB2	1.89	0.55
2:D:175:VAL:O	2:D:176:PRO:O	2.24	0.55
1:A:10:ILE:O	1:A:10:ILE:HG13	2.07	0.54
1:A:212:LEU:HD22	1:A:216:PHE:CZ	2.42	0.54
2:B:254:GLN:OE1	3:F:506:LEU:HG	2.07	0.54
2:B:323:GLN:N	2:B:323:GLN:NE2	2.55	0.54
1:C:75:LYS:NZ	1:C:77:TYR:OH	2.41	0.54
2:D:216:ASP:O	2:D:219:VAL:HB	2.07	0.54
2:B:241:ARG:HA	2:B:244:SER:OG	2.07	0.54
3:H:501:ALA:CA	3:H:502:ALA:HB3	2.37	0.54
1:A:108:LEU:CD1	1:A:112:LEU:HD11	2.37	0.54
1:A:122:ARG:HA	1:A:152:PHE:CE1	2.41	0.54
2:D:400:LYS:C	2:D:402:PRO:CD	2.76	0.54
1:A:162:GLU:OE1	1:A:164:VAL:HG23	2.07	0.54
1:A:256:ASP:OD1	1:A:256:ASP:C	2.45	0.54
1:A:268:HIS:CE1	5:A:2044:HOH:O	2.57	0.54
1:A:15:TYR:CE2	1:A:33:LYS:CD	2.86	0.54

Continued on next page...

Continued from previous page...

Atom-1	Atom-2	Interatomic distance (Å)	Clash overlap (Å)
1:A:275:ILE:HA	5:A:2046:HOH:O	2.07	0.54
1:C:38:ASP:C	1:C:40:GLU:H	2.06	0.54
2:D:347:TYR:OH	2:D:394:LEU:HA	2.08	0.54
2:D:411:GLU:HG3	5:D:2044:HOH:O	2.06	0.54
1:A:203:PHE:O	1:A:211:GLN:NE2	2.26	0.54
1:A:283:HIS:ND1	1:A:284:PRO:HD2	2.23	0.54
1:C:40:GLU:O	1:C:40:GLU:CG	2.55	0.54
1:C:158:THR:HB	1:C:178:LYS:O	2.08	0.54
1:C:177:CYS:HB3	1:C:233:MET:HE1	1.89	0.54
1:A:13:GLY:O	1:A:14:THR:C	2.47	0.53
1:C:207:SER:OG	1:C:209:ILE:HG22	2.07	0.53
1:A:44:VAL:HG11	1:A:49:ILE:HD13	1.89	0.53
1:A:96:LEU:HG	1:A:97:THR:CG2	2.38	0.53
2:B:320:LEU:HD23	2:B:320:LEU:N	2.23	0.53
2:B:335:PHE:CE1	2:B:409:ILE:HG22	2.43	0.53
1:C:55:LEU:HD11	1:C:146:PHE:CD1	2.43	0.53
1:A:9:LYS:CE	1:A:12:GLU:OE1	2.56	0.53
1:C:162:GLU:CD	1:C:164:VAL:CG2	2.77	0.53
2:B:217:TRP:O	2:B:221:VAL:HG23	2.09	0.53
2:B:220:GLU:HG3	2:B:408:SER:HB3	1.89	0.53
1:A:71:HIS:CE1	2:B:296:HIS:CD2	2.95	0.53
1:A:37:LEU:HB2	1:A:75:LYS:HA	1.90	0.53
1:A:86:ASP:OD1	1:A:86:ASP:C	2.47	0.53
1:A:87:LEU:HD22	1:A:91:MET:HG3	1.89	0.53
2:B:400:LYS:C	2:B:402:PRO:CD	2.76	0.53
1:A:163:VAL:CG1	5:A:2025:HOH:O	2.48	0.53
1:A:248:PHE:CE2	1:A:264:SER:HB3	2.43	0.53
2:B:335:PHE:HB2	2:B:413:TYR:CD2	2.44	0.53
1:C:124:LEU:HD12	1:C:126:ARG:HG3	1.89	0.53
1:A:205:GLY:HA3	1:A:211:GLN:OE1	2.09	0.53
2:B:225:TYR:HE2	2:B:277:GLU:OE1	1.91	0.53
4:C:1297:CK4:C6A	4:C:1297:CK4:H5	2.39	0.53
1:C:256:ASP:OD1	1:C:256:ASP:C	2.45	0.53
1:A:112:LEU:HD22	1:A:280:ALA:HB3	1.92	0.52
1:A:253:PRO:HG2	1:A:254:PRO:HD3	1.91	0.52
2:B:230:GLU:OE1	2:B:312:ASN:ND2	2.43	0.52
1:C:222:PRO:HG3	1:C:269:TYR:CZ	2.44	0.52
2:D:357:GLY:O	2:D:358:ALA:C	2.48	0.52
2:D:404:HIS:HD2	2:D:406:GLN:CB	2.16	0.52
1:A:40:GLU:CG	1:A:40:GLU:O	2.57	0.52
1:A:89:LYS:NZ	5:A:2018:HOH:O	2.43	0.52

Continued on next page...

Continued from previous page...

Atom-1	Atom-2	Interatomic distance (Å)	Clash overlap (Å)
2:B:207:THR:HG23	2:B:209:SER:H	1.74	0.52
2:D:342:ILE:O	2:D:342:ILE:CG2	2.57	0.52
2:B:195:PRO:HG3	2:B:240:ASP:HB3	1.92	0.52
2:B:388:LYS:HE2	2:B:392:MET:SD	2.49	0.52
2:B:409:ILE:O	2:B:412:LYS:HB3	2.10	0.52
1:A:73:GLU:HG3	1:C:2:GLU:HG2	1.89	0.51
1:C:159:TYR:CE1	2:D:270:ILE:HG23	2.45	0.51
2:D:343:ASP:HB3	2:D:345:ASP:OD2	2.10	0.51
2:D:230:GLU:OE2	2:D:313:GLN:NE2	2.35	0.51
2:B:182:ILE:HG22	2:B:183:HIS:N	2.26	0.51
1:A:15:TYR:CE1	1:A:47:THR:OG1	2.63	0.51
1:A:173:ILE:HD11	1:A:184:VAL:HG11	1.91	0.51
1:A:275:ILE:HG12	1:A:276:SER:O	2.11	0.51
1:C:223:ASP:C	1:C:223:ASP:OD1	2.48	0.51
1:C:39:THR:HG23	1:C:43:GLY:H	1.73	0.51
1:C:31:ALA:HB3	1:C:80:PHE:HB2	1.91	0.51
1:A:268:HIS:CD2	5:A:2044:HOH:O	2.34	0.51
1:A:51:GLU:O	1:A:55:LEU:HB2	2.11	0.51
2:D:268:GLU:O	2:D:268:GLU:HG3	2.11	0.51
1:A:125:HIS:CG	1:A:128:LEU:HD21	2.46	0.51
2:D:183:HIS:HB2	2:D:317:GLN:NE2	2.20	0.51
2:D:255:LEU:HB2	2:D:286:TYR:CZ	2.46	0.51
2:D:345:ASP:OD2	2:D:346:PRO:HD2	2.10	0.51
1:A:122:ARG:CD	1:A:122:ARG:O	2.59	0.51
2:B:236:VAL:HG21	2:B:341:LEU:HD13	1.93	0.51
1:C:192:ILE:O	1:C:196:MET:HE2	2.11	0.51
1:C:253:PRO:N	1:C:254:PRO:CD	2.73	0.51
2:D:332:LEU:HB3	2:D:363:ALA:HB1	1.92	0.51
1:A:99:ILE:HG23	1:A:103:LEU:HD23	1.93	0.50
1:C:227:TRP:O	1:C:230:VAL:HG12	2.10	0.50
1:C:7:VAL:HG12	1:C:8:GLU:N	2.26	0.50
2:D:400:LYS:O	2:D:402:PRO:HD2	2.10	0.50
3:H:503:ABA:HG2	3:H:503:ABA:O	2.10	0.50
1:A:108:LEU:O	1:A:112:LEU:HD12	2.11	0.50
1:C:162:GLU:HA	1:C:162:GLU:OE2	2.11	0.50
2:D:430:LEU:HB3	2:D:432:LEU:HD23	1.92	0.50
1:C:172:GLU:OE1	1:C:184:VAL:HG12	2.12	0.50
2:D:207:THR:CB	2:D:210:MET:HE3	2.42	0.50
3:F:506:LEU:HD12	3:F:508:PFF:F	2.01	0.50
1:A:39:THR:CG2	1:A:43:GLY:N	2.74	0.50
2:D:224:GLU:HG3	2:D:224:GLU:O	2.11	0.50

Continued on next page...

Continued from previous page...

Atom-1	Atom-2	Interatomic distance (Å)	Clash overlap (Å)
2:D:277:GLU:O	2:D:281:ILE:HG23	2.11	0.50
1:A:157:ARG:HD3	5:B:2016:HOH:O	2.12	0.50
1:C:71:HIS:CG	2:D:296:HIS:NE2	2.80	0.50
2:D:323:GLN:O	2:D:323:GLN:HG2	2.10	0.50
1:C:42:GLU:O	2:D:266:LYS:NZ	2.41	0.50
2:D:190:GLU:CG	2:D:351:LEU:HD22	2.33	0.50
2:B:216:ASP:OD1	2:B:408:SER:OG	2.29	0.50
2:B:335:PHE:HE1	2:B:409:ILE:HG22	1.77	0.50
1:A:9:LYS:HE3	1:A:12:GLU:OE1	2.11	0.50
4:C:1297:CK4:H6A2	4:C:1297:CK4:H5	1.93	0.50
1:A:40:GLU:CA	1:A:40:GLU:OE1	2.60	0.49
2:B:266:LYS:HZ2	2:B:295:GLU:CD	2.14	0.49
1:C:123:VAL:CG1	1:C:124:LEU:N	2.75	0.49
1:C:9:LYS:O	1:C:9:LYS:HE3	2.13	0.49
1:C:90:PHE:CZ	1:C:294:PRO:HB3	2.47	0.49
1:A:64:VAL:HG12	1:A:143:LEU:O	2.13	0.49
2:B:402:PRO:HB2	2:B:403:GLN:HE22	1.78	0.49
2:D:431:ASN:C	2:D:432:LEU:CD2	2.79	0.49
1:A:39:THR:CG2	1:A:43:GLY:O	2.53	0.49
2:D:410:ARG:O	2:D:414:LYS:HG3	2.12	0.49
2:B:431:ASN:C	2:B:432:LEU:HD22	2.32	0.49
1:C:71:HIS:CG	2:D:296:HIS:HE2	2.31	0.49
2:D:400:LYS:C	2:D:402:PRO:HD2	2.33	0.49
2:B:391:LEU:O	2:B:391:LEU:HD12	2.13	0.49
1:C:275:ILE:HD11	1:C:280:ALA:HA	1.95	0.49
1:C:85:GLN:OE1	1:C:296:LEU:HD23	2.13	0.49
1:A:227:TRP:CB	1:A:230:VAL:HG22	2.35	0.49
2:B:338:GLU:O	2:B:341:LEU:HB2	2.13	0.49
1:A:44:VAL:CG1	1:A:49:ILE:HD11	2.43	0.49
2:B:283:ASP:C	2:B:285:THR:N	2.66	0.49
2:B:404:HIS:HD2	2:B:406:GLN:H	1.56	0.49
1:C:84:HIS:ND1	1:C:137:THR:HG23	2.28	0.49
1:A:122:ARG:HA	1:A:152:PHE:CZ	2.48	0.48
4:A:1297:CK4:H5	4:A:1297:CK4:C6A	2.43	0.48
1:A:198:THR:O	1:A:199:ARG:HB2	2.13	0.48
1:A:209:ILE:HG23	1:A:210:ASP:N	2.26	0.48
2:B:210:MET:HA	2:B:213:ILE:HD13	1.95	0.48
2:B:302:LEU:N	2:B:302:LEU:HD23	2.26	0.48
1:C:122:ARG:HA	1:C:152:PHE:CE1	2.47	0.48
2:B:199:TYR:CD1	2:B:199:TYR:C	2.86	0.48
2:B:326:ASN:CG	2:B:329:VAL:HG23	2.34	0.48

Continued on next page...

Continued from previous page...

Atom-1	Atom-2	Interatomic distance (Å)	Clash overlap (Å)
1:A:15:TYR:HE2	1:A:33:LYS:NZ	2.09	0.48
1:C:157:ARG:HD3	5:D:2012:HOH:O	2.13	0.48
1:C:247:ASP:O	1:C:250:LYS:HB2	2.13	0.48
1:C:83:LEU:O	4:C:1297:CK4:H6B	2.12	0.48
1:A:129:LYS:HA	1:A:192:ILE:HD11	1.96	0.48
1:C:230:VAL:O	1:C:233:MET:HG3	2.13	0.48
2:D:246:MET:CE	2:D:297:LEU:HD21	2.44	0.48
1:A:207:SER:OG	1:A:209:ILE:HG22	2.13	0.48
1:A:223:ASP:OD1	1:A:226:VAL:HG23	2.14	0.48
2:B:412:LYS:CA	5:B:2039:HOH:O	2.44	0.48
1:C:117:PHE:O	1:C:118:CYS:C	2.51	0.48
2:D:287:THR:HG23	2:D:290:GLN:CG	2.42	0.48
2:B:277:GLU:CG	5:B:2023:HOH:O	2.59	0.48
1:A:222:PRO:HG3	1:A:269:TYR:CE1	2.49	0.48
1:A:81:GLU:OE1	1:A:142:LYS:NZ	2.45	0.48
2:B:178:TYR:O	2:B:180:GLU:N	2.47	0.48
2:B:213:ILE:HD12	2:B:213:ILE:H	1.78	0.48
1:C:83:LEU:HD21	1:C:142:LYS:HE3	1.96	0.48
2:B:207:THR:HG22	2:B:210:MET:HE2	1.96	0.47
1:C:59:ASN:HB2	5:C:2010:HOH:O	2.14	0.47
2:D:343:ASP:C	2:D:345:ASP:H	2.17	0.47
2:B:339:LEU:HD23	2:B:409:ILE:HD12	1.96	0.47
2:D:349:LYS:NZ	5:D:2031:HOH:O	2.30	0.47
1:A:170:ALA:O	1:A:171:PRO:C	2.52	0.47
2:B:217:TRP:CZ2	2:B:281:ILE:HG23	2.45	0.47
1:C:78:LEU:N	1:C:78:LEU:CD2	2.76	0.47
2:B:283:ASP:O	2:B:284:ASP:C	2.52	0.47
1:C:15:TYR:HE2	1:C:33:LYS:CD	2.22	0.47
1:C:230:VAL:HA	1:C:233:MET:HG3	1.97	0.47
1:A:253:PRO:CG	1:A:254:PRO:HD3	2.45	0.47
2:B:371:SER:OG	2:B:372:TRP:N	2.48	0.47
2:B:400:LYS:C	2:B:402:PRO:HD2	2.35	0.47
1:A:224:GLU:CD	1:A:229:GLY:H	2.18	0.47
1:A:63:ILE:O	1:A:64:VAL:C	2.53	0.47
1:C:115:LEU:HD13	1:C:119:HIS:HE1	1.78	0.47
3:F:505:SER:O	3:F:506:LEU:C	2.53	0.47
1:A:20:LYS:CD	1:A:82:PHE:CE2	2.95	0.47
1:C:188:SER:O	1:C:192:ILE:HG13	2.14	0.47
1:C:39:THR:C	1:C:41:THR:OG1	2.53	0.47
1:A:108:LEU:CD1	1:A:112:LEU:CD1	2.92	0.47
1:A:83:LEU:N	1:A:83:LEU:HD12	2.30	0.47

Continued on next page...

Continued from previous page...

Atom-1	Atom-2	Interatomic distance (Å)	Clash overlap (Å)
1:C:122:ARG:HA	1:C:152:PHE:CZ	2.50	0.47
1:C:211:GLN:O	1:C:212:LEU:C	2.52	0.47
1:C:9:LYS:HB3	1:C:9:LYS:HE2	1.75	0.47
1:A:125:HIS:CE1	1:A:128:LEU:HD23	2.50	0.46
2:B:404:HIS:C	2:B:406:GLN:H	2.18	0.46
2:B:254:GLN:HG3	2:B:254:GLN:O	2.15	0.46
2:B:312:ASN:C	2:B:312:ASN:HD22	2.18	0.46
1:C:15:TYR:HE1	1:C:48:ALA:N	2.14	0.46
1:A:253:PRO:CB	1:A:254:PRO:HD3	2.46	0.46
2:B:216:ASP:CG	2:B:408:SER:OG	2.54	0.46
1:C:233:MET:O	1:C:234:PRO:C	2.54	0.46
2:D:221:VAL:HG21	2:D:281:ILE:CD1	2.44	0.46
1:C:153:GLY:HA3	2:D:313:GLN:HG2	1.96	0.46
1:A:44:VAL:CG1	1:A:49:ILE:CD1	2.94	0.46
1:C:135:ILE:HB	5:C:2015:HOH:O	2.15	0.46
1:C:71:HIS:CE1	2:D:296:HIS:CD2	3.04	0.46
1:C:90:PHE:CZ	1:C:294:PRO:HB2	2.51	0.46
2:D:401:ALA:N	2:D:402:PRO:CD	2.79	0.46
1:C:76:LEU:CD1	1:C:76:LEU:C	2.84	0.46
2:D:374:GLU:O	2:D:375:SER:C	2.54	0.46
1:A:231:THR:HG22	1:A:236:TYR:CE1	2.51	0.46
2:D:207:THR:HB	2:D:210:MET:HE3	1.98	0.46
2:D:273:PRO:HB2	2:D:278:PHE:CE2	2.50	0.46
1:A:166:LEU:HD13	1:A:166:LEU:HA	1.79	0.46
1:A:69:VAL:HG13	1:A:78:LEU:CD2	2.45	0.46
2:B:432:LEU:HD13	2:B:432:LEU:HA	1.76	0.46
1:C:90:PHE:CE1	1:C:294:PRO:HB2	2.50	0.46
2:D:340:SER:HB2	2:D:347:TYR:CG	2.51	0.46
1:A:212:LEU:HA	1:A:212:LEU:HD23	1.84	0.45
1:A:9:LYS:HE2	5:A:2004:HOH:O	2.17	0.45
3:F:507:ILE:HG13	3:F:507:ILE:O	2.14	0.45
1:A:125:HIS:ND1	1:A:128:LEU:HD23	2.31	0.45
1:A:37:LEU:HA	1:A:39:THR:HG1	1.77	0.45
2:B:363:ALA:O	2:B:364:LEU:C	2.54	0.45
2:B:361:HIS:HB2	2:B:372:TRP:HB2	1.97	0.45
1:A:81:GLU:HG3	1:A:83:LEU:CD1	2.47	0.45
1:A:87:LEU:O	1:A:87:LEU:CD2	2.65	0.45
1:C:67:LEU:HD11	1:C:81:GLU:HA	1.98	0.45
1:A:14:THR:C	1:A:15:TYR:CD2	2.90	0.45
1:A:6:LYS:HZ2	1:A:34:LYS:HZ3	1.63	0.45
2:B:207:THR:CG2	2:B:210:MET:HE2	2.46	0.45

Continued on next page...

Continued from previous page...

Atom-1	Atom-2	Interatomic distance (Å)	Clash overlap (Å)
1:A:44:VAL:HG11	1:A:49:ILE:HD11	1.99	0.45
1:C:162:GLU:HG3	1:C:164:VAL:CG2	2.28	0.45
1:C:9:LYS:HA	1:C:19:TYR:CD2	2.51	0.45
1:C:200:ARG:HG3	1:C:201:ALA:N	2.32	0.45
2:D:207:THR:HG23	2:D:209:SER:N	2.31	0.45
2:B:271:TYR:HA	2:B:272:PRO:HD3	1.79	0.45
2:B:424:LEU:HA	2:B:424:LEU:HD12	1.63	0.45
1:C:37:LEU:HB2	1:C:75:LYS:HA	1.98	0.45
3:H:502:ALA:O	3:H:503:ABA:C	2.63	0.45
3:F:506:LEU:H	3:F:506:LEU:HD23	1.81	0.45
1:A:171:PRO:HD3	1:A:187:TRP:CZ2	2.52	0.45
2:D:190:GLU:OE1	2:D:352:PRO:HD2	2.17	0.45
2:D:221:VAL:O	2:D:221:VAL:HG12	2.16	0.45
2:D:372:TRP:CD1	2:D:377:ILE:CG1	3.00	0.45
1:A:40:GLU:O	1:A:41:THR:CB	2.63	0.45
2:B:190:GLU:OE1	2:B:352:PRO:HD2	2.17	0.45
2:B:223:GLU:OE1	2:B:412:LYS:HG3	2.17	0.44
1:C:173:ILE:HD11	1:C:184:VAL:HG11	1.99	0.44
1:C:189:LEU:HA	1:C:189:LEU:HD12	1.81	0.44
1:C:71:HIS:CE1	2:D:296:HIS:NE2	2.85	0.44
1:C:60:HIS:CG	1:C:61:PRO:HD2	2.51	0.44
1:A:253:PRO:C	1:A:255:LEU:H	2.19	0.44
1:A:86:ASP:O	1:A:86:ASP:OD1	2.34	0.44
1:C:172:GLU:HG2	1:C:173:ILE:N	2.32	0.44
1:C:218:THR:CG2	1:C:218:THR:O	2.65	0.44
2:B:430:LEU:O	2:B:431:ASN:HB2	2.16	0.44
1:C:15:TYR:HB2	1:C:16:GLY:H	1.60	0.44
1:C:1:MET:N	1:C:2:GLU:OE2	2.44	0.44
2:D:225:TYR:CE2	2:D:277:GLU:HB3	2.53	0.44
2:D:332:LEU:O	2:D:333:ALA:C	2.55	0.44
1:A:42:GLU:HA	2:B:275:VAL:HG23	1.95	0.44
1:A:62:ASN:HD22	1:A:110:GLN:HB3	1.82	0.44
2:B:293:ARG:CG	2:B:293:ARG:HH11	2.30	0.44
1:C:25:LEU:HD23	1:C:25:LEU:HA	1.58	0.44
1:A:2:GLU:HG2	1:C:73:GLU:HG3	1.99	0.44
1:C:95:ALA:O	1:C:96:LEU:CB	2.63	0.44
1:A:181:SER:C	1:A:183:ALA:N	2.71	0.44
2:B:175:VAL:O	2:B:179:HIS:CE1	2.70	0.44
1:A:73:GLU:OE1	1:C:2:GLU:HG2	2.16	0.44
2:D:225:TYR:CE1	2:D:281:ILE:CG2	2.98	0.44
1:A:136:ASN:OD1	1:A:136:ASN:C	2.56	0.44

Continued on next page...

Continued from previous page...

Atom-1	Atom-2	Interatomic distance (Å)	Clash overlap (Å)
2:B:196:LYS:NZ	5:B:2010:HOH:O	2.50	0.44
1:C:152:PHE:O	1:C:154:VAL:N	2.51	0.44
2:D:207:THR:HG23	2:D:209:SER:H	1.83	0.44
2:D:430:LEU:CB	2:D:432:LEU:HD23	2.48	0.44
1:A:262:LEU:O	1:A:263:LEU:C	2.56	0.44
2:B:275:VAL:HG11	2:B:292:LEU:HD13	2.00	0.44
1:C:39:THR:C	1:C:41:THR:N	2.69	0.44
2:B:223:GLU:CD	2:B:412:LYS:HG3	2.37	0.44
2:D:428:GLU:C	2:D:429:THR:CG2	2.86	0.44
1:A:84:HIS:O	4:A:1297:CK4:C5B	2.64	0.43
2:B:209:SER:O	2:B:212:ALA:HB3	2.17	0.43
2:B:212:ALA:O	2:B:213:ILE:C	2.55	0.43
1:C:42:GLU:HA	1:C:42:GLU:OE2	2.18	0.43
1:C:88:LYS:HA	1:C:88:LYS:HD3	1.82	0.43
1:C:9:LYS:HD2	1:C:11:GLY:H	1.83	0.43
1:A:9:LYS:HD2	1:A:11:GLY:H	1.83	0.43
2:B:207:THR:N	2:B:210:MET:HE3	2.33	0.43
2:B:323:GLN:HA	2:B:324:PRO:HA	1.65	0.43
1:C:29:VAL:HG12	1:C:82:PHE:HB3	2.00	0.43
1:A:270:ASP:OD1	1:A:272:ASN:N	2.41	0.43
2:B:207:THR:O	2:B:208:ASN:C	2.56	0.43
3:H:505:SER:O	3:H:506:LEU:C	2.55	0.43
1:C:1:MET:CE	1:C:1:MET:CA	2.89	0.43
1:C:3:ASN:HD21	1:C:25:LEU:HD12	1.83	0.43
1:C:55:LEU:HD12	1:C:55:LEU:HA	1.70	0.43
2:B:372:TRP:HA	2:B:373:PRO:HD3	1.72	0.43
1:C:17:VAL:HG13	1:C:19:TYR:CE1	2.54	0.43
1:C:214:ARG:HG3	1:C:214:ARG:NH1	2.32	0.43
1:C:72:THR:OG1	1:C:75:LYS:HG3	2.18	0.43
1:A:256:ASP:OD1	1:A:258:ASP:N	2.51	0.43
2:B:281:ILE:HD12	2:B:281:ILE:HA	1.83	0.43
1:C:283:HIS:HA	1:C:284:PRO:HD3	1.84	0.43
1:C:198:THR:C	1:C:199:ARG:HG3	2.39	0.43
2:D:176:PRO:HG2	2:D:179:HIS:CD2	2.53	0.43
2:D:420:GLY:O	2:D:422:SER:N	2.52	0.43
2:B:211:ARG:O	2:B:214:LEU:HB3	2.19	0.43
1:C:39:THR:CA	1:C:41:THR:OG1	2.66	0.43
1:A:122:ARG:O	1:A:151:ALA:HA	2.18	0.43
2:B:315:LEU:O	2:B:319:PHE:CD1	2.71	0.43
1:C:165:THR:HG23	1:C:165:THR:O	2.19	0.43
2:D:283:ASP:O	2:D:285:THR:N	2.51	0.43

Continued on next page...

Continued from previous page...

Atom-1	Atom-2	Interatomic distance (Å)	Clash overlap (Å)
2:B:361:HIS:CD2	2:B:361:HIS:C	2.92	0.43
2:B:384:LEU:HD12	2:B:384:LEU:O	2.19	0.43
1:C:62:ASN:ND2	1:C:110:GLN:HB3	2.34	0.43
1:C:96:LEU:O	1:C:199:ARG:NH1	2.52	0.43
2:D:225:TYR:HE1	2:D:281:ILE:CG2	2.32	0.43
1:A:110:GLN:OE1	1:A:140:ALA:HA	2.19	0.42
2:B:194:LYS:C	2:B:195:PRO:O	2.57	0.42
2:B:213:ILE:HD12	2:B:213:ILE:N	2.34	0.42
1:A:121:HIS:HD2	2:B:185:TYR:CZ	2.36	0.42
1:C:162:GLU:CG	1:C:164:VAL:CG2	2.82	0.42
1:C:74:ASN:OD1	1:C:74:ASN:N	2.52	0.42
1:A:270:ASP:HA	1:A:271:PRO:HD3	1.69	0.42
1:A:64:VAL:HG13	1:A:64:VAL:O	2.19	0.42
1:A:71:HIS:CE1	2:B:296:HIS:ND1	2.79	0.42
2:B:368:THR:OG1	2:B:370:GLN:HG3	2.19	0.42
2:B:432:LEU:N	2:B:432:LEU:HD22	2.34	0.42
1:C:36:ARG:HH11	1:C:36:ARG:HG3	1.82	0.42
1:C:65:LYS:H	1:C:81:GLU:HG2	1.82	0.42
2:D:368:THR:OG1	2:D:370:GLN:HG3	2.19	0.42
2:B:357:GLY:O	2:B:360:PHE:N	2.52	0.42
1:C:15:TYR:HE2	1:C:33:LYS:CE	2.33	0.42
2:B:207:THR:HG21	2:B:209:SER:HB3	2.01	0.42
1:C:108:LEU:HD22	1:C:193:PHE:CG	2.55	0.42
1:A:125:HIS:CG	1:A:128:LEU:CD2	3.03	0.42
1:A:159:TYR:CD2	5:A:2022:HOH:O	2.38	0.42
1:A:290:THR:OG1	1:A:292:PRO:HD3	2.19	0.42
1:A:128:LEU:HB2	1:A:188:SER:HB2	2.02	0.42
2:B:253:LEU:C	2:B:255:LEU:N	2.73	0.42
2:B:343:ASP:C	2:B:345:ASP:N	2.71	0.42
2:B:411:GLU:O	2:B:412:LYS:C	2.55	0.42
1:C:124:LEU:HD12	1:C:126:ARG:CG	2.49	0.42
1:C:46:SER:O	1:C:49:ILE:HB	2.20	0.42
2:D:318:TYR:O	2:D:319:PHE:C	2.57	0.42
1:A:37:LEU:HD22	1:A:37:LEU:HA	1.85	0.42
2:B:387:LEU:O	2:B:388:LYS:C	2.58	0.42
1:A:231:THR:HA	1:A:236:TYR:CE1	2.55	0.42
1:A:40:GLU:OE1	1:A:40:GLU:C	2.57	0.42
1:C:17:VAL:HG13	1:C:19:TYR:HE1	1.85	0.42
2:D:376:LEU:HD23	2:D:376:LEU:HA	1.80	0.42
2:D:399:LEU:O	2:D:402:PRO:HD3	2.19	0.42
1:A:122:ARG:HD3	1:A:122:ARG:O	2.20	0.42

Continued on next page...

Continued from previous page...

Atom-1	Atom-2	Interatomic distance (Å)	Clash overlap (Å)
1:A:126:ARG:NH1	5:A:2023:HOH:O	2.53	0.42
1:A:223:ASP:C	1:A:223:ASP:OD1	2.59	0.42
2:B:209:SER:O	2:B:213:ILE:CD1	2.68	0.42
2:B:202:LYS:O	2:B:204:PRO:HD3	2.20	0.41
1:C:45:PRO:HD2	1:C:48:ALA:HB3	2.02	0.41
1:A:248:PHE:C	1:A:250:LYS:N	2.72	0.41
2:B:315:LEU:O	2:B:319:PHE:CG	2.73	0.41
4:A:1297:CK4:C2B	4:A:1297:CK4:N3	2.81	0.41
1:A:181:SER:O	1:A:183:ALA:N	2.53	0.41
1:A:211:GLN:O	1:A:213:PHE:N	2.53	0.41
1:C:3:ASN:ND2	1:C:25:LEU:HD12	2.35	0.41
2:D:207:THR:HB	2:D:210:MET:HE1	2.01	0.41
1:A:32:LEU:HA	1:A:32:LEU:HD23	1.71	0.41
2:B:207:THR:O	2:B:210:MET:N	2.53	0.41
2:B:256:VAL:HG22	2:B:294:MET:HE1	2.02	0.41
1:C:275:ILE:CD1	1:C:280:ALA:HA	2.49	0.41
1:A:215:ILE:HG23	1:A:219:LEU:HD12	2.03	0.41
2:D:215:VAL:O	2:D:218:LEU:HB2	2.21	0.41
1:A:162:GLU:HG3	1:A:164:VAL:CG2	2.44	0.41
1:A:41:THR:C	1:A:42:GLU:HG2	2.41	0.41
1:A:89:LYS:O	1:A:90:PHE:C	2.58	0.41
2:B:287:THR:H	2:B:290:GLN:HB2	1.86	0.41
1:C:30:VAL:C	1:C:82:PHE:HB2	2.40	0.41
1:A:38:ASP:OD1	1:A:38:ASP:C	2.58	0.41
1:A:267:LEU:HD23	1:A:267:LEU:HA	1.82	0.41
1:C:129:LYS:HB2	1:C:130:PRO:HD2	2.03	0.41
2:D:287:THR:O	2:D:288:LYS:C	2.59	0.41
1:A:108:LEU:HG	1:A:286:PHE:HZ	1.86	0.41
1:A:162:GLU:CG	1:A:164:VAL:HG23	2.47	0.41
1:A:72:THR:CB	5:A:2016:HOH:O	2.60	0.41
2:B:208:ASN:O	2:B:209:SER:C	2.57	0.41
2:B:230:GLU:O	2:B:231:THR:C	2.59	0.41
2:D:287:THR:O	2:D:290:GLN:HB2	2.20	0.41
1:A:275:ILE:HD11	1:A:280:ALA:HA	2.02	0.41
2:B:249:LEU:HA	2:B:249:LEU:HD12	1.72	0.41
2:B:315:LEU:HA	2:B:315:LEU:HD23	1.83	0.41
1:C:251:VAL:HG12	1:C:251:VAL:O	2.21	0.41
1:C:71:HIS:CE1	1:C:76:LEU:HD22	2.56	0.41
1:A:108:LEU:HD12	1:A:108:LEU:O	2.20	0.41
1:A:209:ILE:CG2	1:A:210:ASP:N	2.84	0.41
2:B:207:THR:HG23	2:B:209:SER:HB3	2.03	0.41

Continued on next page...

Continued from previous page...

Atom-1	Atom-2	Interatomic distance (Å)	Clash overlap (Å)
2:B:404:HIS:HD2	2:B:405:ALA:CA	2.34	0.41
1:C:71:HIS:ND1	2:D:296:HIS:NE2	2.67	0.41
2:D:215:VAL:O	2:D:218:LEU:N	2.54	0.41
2:D:401:ALA:N	2:D:402:PRO:HD3	2.36	0.41
1:A:115:LEU:HA	1:A:115:LEU:HD23	1.76	0.40
1:A:52:ILE:O	1:A:56:LYS:HG3	2.21	0.40
1:A:71:HIS:HE1	2:B:296:HIS:ND1	2.17	0.40
2:D:230:GLU:OE1	2:D:312:ASN:ND2	2.50	0.40
2:D:228:GLN:N	2:D:269:GLU:OE2	2.48	0.40
2:D:292:LEU:HA	2:D:292:LEU:HD12	1.57	0.40
2:D:323:GLN:HA	2:D:324:PRO:HA	1.74	0.40
1:A:62:ASN:ND2	1:A:110:GLN:HB3	2.35	0.40
2:B:214:LEU:O	2:B:217:TRP:HB3	2.20	0.40
1:C:211:GLN:C	1:C:213:PHE:N	2.74	0.40
1:C:240:PHE:HA	1:C:241:PRO:HD2	1.77	0.40
2:D:409:ILE:O	2:D:412:LYS:HB3	2.21	0.40
1:C:269:TYR:O	1:C:271:PRO:HD3	2.22	0.40
2:D:362:LEU:HA	2:D:362:LEU:HD13	1.87	0.40
1:A:162:GLU:OE2	1:A:180:TYR:OH	2.39	0.40
1:A:6:LYS:NZ	1:A:34:LYS:HZ3	2.19	0.40
2:B:345:ASP:HA	2:B:346:PRO:HA	1.74	0.40
1:C:166:LEU:HB3	1:C:211:GLN:OE1	2.22	0.40
1:C:217:ARG:HB3	1:C:243:TRP:CZ3	2.56	0.40
1:C:69:VAL:HG12	1:C:70:ILE:N	2.37	0.40
1:C:87:LEU:HA	1:C:87:LEU:HD23	1.79	0.40
2:D:283:ASP:C	2:D:285:THR:N	2.75	0.40
1:A:131:GLN:HG2	1:A:131:GLN:H	1.43	0.40
2:D:176:PRO:HG2	2:D:179:HIS:NE2	2.36	0.40
2:D:354:VAL:HG12	2:D:355:ILE:N	2.36	0.40
2:D:365:TYR:CD2	2:D:365:TYR:C	2.94	0.40
3:H:507:ILE:O	5:H:2003:HOH:O	2.22	0.40

All (1) symmetry-related close contacts are listed below. The label for Atom-2 includes the symmetry operator and encoded unit-cell translations to be applied.

Atom-1	Atom-2	Interatomic distance (Å)	Clash overlap (Å)
2:B:431:ASN:ND2	1:C:210:ASP:OD1[2_664]	2.06	0.14

5.3 Torsion angles

5.3.1 Protein backbone

In the following table, the Percentiles column shows the percent Ramachandran outliers of the chain as a percentile score with respect to all X-ray entries followed by that with respect to entries of similar resolution.

The Analysed column shows the number of residues for which the backbone conformation was analysed, and the total number of residues.

Mol	Chain	Analysed	Favoured	Allowed	Outliers	Percentiles	
1	A	294/298 (99%)	254 (86%)	27 (9%)	13 (4%)	2	10
1	C	295/298 (99%)	259 (88%)	26 (9%)	10 (3%)	3	15
2	B	256/259 (99%)	217 (85%)	31 (12%)	8 (3%)	4	16
2	D	256/259 (99%)	228 (89%)	21 (8%)	7 (3%)	5	19
3	F	5/9 (56%)	2 (40%)	1 (20%)	2 (40%)	0	0
3	H	5/9 (56%)	3 (60%)	1 (20%)	1 (20%)	0	0
All	All	1111/1132 (98%)	963 (87%)	107 (10%)	41 (4%)	3	13

All (41) Ramachandran outliers are listed below:

Mol	Chain	Res	Type
1	A	14	THR
1	A	17	VAL
1	A	39	THR
1	A	41	THR
2	B	179	HIS
2	B	195	PRO
2	B	284	ASP
2	B	344	ALA
2	B	424	LEU
1	C	14	THR
1	C	15	TYR
1	C	39	THR
1	C	164	VAL
2	D	176	PRO
2	D	179	HIS
2	D	424	LEU
1	A	38	ASP
1	A	164	VAL
1	C	40	GLU
2	D	346	PRO

Continued on next page...

Continued from previous page...

Mol	Chain	Res	Type
3	F	502	ALA
3	H	502	ALA
1	A	15	TYR
1	A	96	LEU
2	B	358	ALA
2	B	405	ALA
1	C	122	ARG
2	D	195	PRO
2	D	358	ALA
3	F	506	LEU
1	A	42	GLU
1	A	73	GLU
2	B	415	ASN
2	D	284	ASP
1	A	40	GLU
1	A	241	PRO
1	C	41	THR
1	C	153	GLY
1	C	228	PRO
1	C	215	ILE
1	A	254	PRO

5.3.2 Protein sidechains ⓘ

In the following table, the Percentiles column shows the percent sidechain outliers of the chain as a percentile score with respect to all X-ray entries followed by that with respect to entries of similar resolution.

The Analysed column shows the number of residues for which the sidechain conformation was analysed, and the total number of residues.

Mol	Chain	Analysed	Rotameric	Outliers	Percentiles	
1	A	261/263 (99%)	214 (82%)	47 (18%)	1	5
1	C	262/263 (100%)	209 (80%)	53 (20%)	1	4
2	B	232/233 (100%)	189 (82%)	43 (18%)	1	5
2	D	232/233 (100%)	198 (85%)	34 (15%)	3	9
3	F	4/4 (100%)	3 (75%)	1 (25%)	0	2
3	H	4/4 (100%)	3 (75%)	1 (25%)	0	2
All	All	995/1000 (100%)	816 (82%)	179 (18%)	2	5

All (179) residues with a non-rotameric sidechain are listed below:

Mol	Chain	Res	Type
1	A	1	MET
1	A	9	LYS
1	A	12	GLU
1	A	15	TYR
1	A	17	VAL
1	A	20	LYS
1	A	34	LYS
1	A	36	ARG
1	A	37	LEU
1	A	40	GLU
1	A	55	LEU
1	A	56	LYS
1	A	71	HIS
1	A	74	ASN
1	A	75	LYS
1	A	84	HIS
1	A	85	GLN
1	A	87	LEU
1	A	96	LEU
1	A	115	LEU
1	A	122	ARG
1	A	124	LEU
1	A	131	GLN
1	A	136	ASN
1	A	143	LEU
1	A	158	THR
1	A	160	THR
1	A	175	LEU
1	A	188	SER
1	A	202	LEU
1	A	212	LEU
1	A	214	ARG
1	A	221	THR
1	A	226	VAL
1	A	230	VAL
1	A	231	THR
1	A	232	SER
1	A	245	ARG
1	A	248	PHE
1	A	255	LEU
1	A	261	SER
1	A	268	HIS

Continued on next page...

Continued from previous page...

Mol	Chain	Res	Type
1	A	276	SER
1	A	278	LYS
1	A	287	GLN
1	A	293	VAL
1	A	296	LEU
2	B	175	VAL
2	B	177	ASP
2	B	180	GLU
2	B	197	VAL
2	B	199	TYR
2	B	200	MET
2	B	201	LYS
2	B	207	THR
2	B	210	MET
2	B	232	LEU
2	B	244	SER
2	B	245	SER
2	B	249	LEU
2	B	250	ARG
2	B	271	TYR
2	B	281	ILE
2	B	284	ASP
2	B	285	THR
2	B	291	VAL
2	B	292	LEU
2	B	293	ARG
2	B	303	THR
2	B	312	ASN
2	B	322	GLN
2	B	323	GLN
2	B	327	CYS
2	B	362	LEU
2	B	364	LEU
2	B	374	GLU
2	B	375	SER
2	B	378	ARG
2	B	383	THR
2	B	384	LEU
2	B	391	LEU
2	B	392	MET
2	B	396	GLN
2	B	403	GLN

Continued on next page...

Continued from previous page...

Mol	Chain	Res	Type
2	B	404	HIS
2	B	408	SER
2	B	424	LEU
2	B	425	ASN
2	B	428	GLU
2	B	429	THR
1	C	1	MET
1	C	2	GLU
1	C	9	LYS
1	C	10	ILE
1	C	12	GLU
1	C	14	THR
1	C	15	TYR
1	C	22[A]	ARG
1	C	22[B]	ARG
1	C	36	ARG
1	C	37	LEU
1	C	41	THR
1	C	46	SER
1	C	55	LEU
1	C	64	VAL
1	C	75	LYS
1	C	76	LEU
1	C	78	LEU
1	C	85	GLN
1	C	87	LEU
1	C	89	LYS
1	C	96	LEU
1	C	97	THR
1	C	115	LEU
1	C	122	ARG
1	C	131	GLN
1	C	134	LEU
1	C	135	ILE
1	C	143	LEU
1	C	154	VAL
1	C	162	GLU
1	C	181	SER
1	C	196	MET
1	C	199	ARG
1	C	200	ARG
1	C	206	ASP

Continued on next page...

Continued from previous page...

Mol	Chain	Res	Type
1	C	214	ARG
1	C	217	ARG
1	C	226	VAL
1	C	232	SER
1	C	242	LYS
1	C	246	GLN
1	C	248	PHE
1	C	252	VAL
1	C	261	SER
1	C	264	SER
1	C	276	SER
1	C	278	LYS
1	C	287	GLN
1	C	289	VAL
1	C	291	LYS
1	C	293	VAL
1	C	296	LEU
2	D	178	TYR
2	D	187	ARG
2	D	196	LYS
2	D	197	VAL
2	D	199	TYR
2	D	200	MET
2	D	206	ILE
2	D	207	THR
2	D	210	MET
2	D	232	LEU
2	D	287	THR
2	D	292	LEU
2	D	316	THR
2	D	317	GLN
2	D	328	LYS
2	D	345	ASP
2	D	348	LEU
2	D	362	LEU
2	D	364	LEU
2	D	371	SER
2	D	374	GLU
2	D	375	SER
2	D	378	ARG
2	D	383	THR
2	D	384	LEU

Continued on next page...

Continued from previous page...

Mol	Chain	Res	Type
2	D	385	GLU
2	D	392	MET
2	D	396	GLN
2	D	403	GLN
2	D	417	LYS
2	D	425	ASN
2	D	428	GLU
2	D	431	ASN
2	D	432	LEU
3	F	507	ILE
3	H	504	ARG

Some sidechains can be flipped to improve hydrogen bonding and reduce clashes. All (24) such sidechains are listed below:

Mol	Chain	Res	Type
1	A	60	HIS
1	A	62	ASN
1	A	71	HIS
1	A	74	ASN
1	A	121	HIS
2	B	208	ASN
2	B	229	ASN
2	B	296	HIS
2	B	312	ASN
2	B	317	GLN
2	B	323	GLN
2	B	403	GLN
2	B	404	HIS
2	B	419	HIS
1	C	60	HIS
1	C	85	GLN
1	C	131	GLN
1	C	246	GLN
2	D	208	ASN
2	D	233	HIS
2	D	317	GLN
2	D	322	GLN
2	D	403	GLN
2	D	404	HIS

5.3.3 RNA ⓘ

There are no RNA molecules in this entry.

5.4 Non-standard residues in protein, DNA, RNA chains ⓘ

4 non-standard protein/DNA/RNA residues are modelled in this entry.

In the following table, the Counts columns list the number of bonds (or angles) for which Mogul statistics could be retrieved, the number of bonds (or angles) that are observed in the model and the number of bonds (or angles) that are defined in the Chemical Component Dictionary. The Link column lists molecule types, if any, to which the group is linked. The Z score for a bond length (or angle) is the number of standard deviations the observed value is removed from the expected value. A bond length (or angle) with $|Z| > 2$ is considered an outlier worth inspection. RMSZ is the root-mean-square of all Z scores of the bond lengths (or angles).

Mol	Type	Chain	Res	Link	Bond lengths			Bond angles		
					Counts	RMSZ	# Z > 2	Counts	RMSZ	# Z > 2
3	PFF	F	508	3	11,12,13	0.81	0	12,15,17	1.98	7 (58%)
3	ABA	H	503	3	4,5,6	0.55	0	1,5,7	3.08	1 (100%)
3	PFF	H	508	3	11,12,13	0.90	0	12,15,17	1.92	3 (25%)
3	ABA	F	503	3	4,5,6	0.41	0	1,5,7	4.34	1 (100%)

In the following table, the Chirals column lists the number of chiral outliers, the number of chiral centers analysed, the number of these observed in the model and the number defined in the Chemical Component Dictionary. Similar counts are reported in the Torsion and Rings columns. '-' means no outliers of that kind were identified.

Mol	Type	Chain	Res	Link	Chirals	Torsions	Rings
3	PFF	F	508	3	-	2/5/6/8	0/1/1/1
3	ABA	H	503	3	-	1/3/4/6	-
3	PFF	H	508	3	-	2/5/6/8	0/1/1/1
3	ABA	F	503	3	-	2/3/4/6	-

There are no bond length outliers.

All (12) bond angle outliers are listed below:

Mol	Chain	Res	Type	Atoms	Z	Observed(°)	Ideal(°)
3	H	508	PFF	CB-CA-C	-5.26	101.60	111.47
3	F	503	ABA	CG-CB-CA	4.34	123.34	113.42
3	F	508	PFF	CE2-CZ-CE1	-3.09	118.72	122.83
3	H	503	ABA	CG-CB-CA	3.08	120.47	113.42

Continued on next page...

Continued from previous page...

Mol	Chain	Res	Type	Atoms	Z	Observed(°)	Ideal(°)
3	F	508	PFF	CB-CA-C	-2.94	105.95	111.47
3	F	508	PFF	CB-CG-CD1	-2.64	115.66	120.91
3	F	508	PFF	CB-CG-CD2	-2.27	116.40	120.91
3	F	508	PFF	CD1-CE1-CZ	2.21	120.65	118.36
3	F	508	PFF	CG-CB-CA	2.15	118.46	114.10
3	H	508	PFF	CE1-CD1-CG	-2.05	118.20	121.03
3	H	508	PFF	CD1-CE1-CZ	2.04	120.47	118.36
3	F	508	PFF	CD2-CE2-CZ	2.02	120.45	118.36

There are no chirality outliers.

All (7) torsion outliers are listed below:

Mol	Chain	Res	Type	Atoms
3	F	508	PFF	C-CA-CB-CG
3	F	503	ABA	C-CA-CB-CG
3	F	503	ABA	N-CA-CB-CG
3	H	503	ABA	C-CA-CB-CG
3	F	508	PFF	N-CA-CB-CG
3	H	508	PFF	N-CA-CB-CG
3	H	508	PFF	C-CA-CB-CG

There are no ring outliers.

3 monomers are involved in 13 short contacts:

Mol	Chain	Res	Type	Clashes	Symm-Clashes
3	F	508	PFF	6	0
3	H	503	ABA	3	0
3	H	508	PFF	4	0

5.5 Carbohydrates [i](#)

There are no carbohydrates in this entry.

5.6 Ligand geometry [i](#)

2 ligands are modelled in this entry.

In the following table, the Counts columns list the number of bonds (or angles) for which Mogul statistics could be retrieved, the number of bonds (or angles) that are observed in the model and the number of bonds (or angles) that are defined in the Chemical Component Dictionary. The

Link column lists molecule types, if any, to which the group is linked. The Z score for a bond length (or angle) is the number of standard deviations the observed value is removed from the expected value. A bond length (or angle) with $|Z| > 2$ is considered an outlier worth inspection. RMSZ is the root-mean-square of all Z scores of the bond lengths (or angles).

Mol	Type	Chain	Res	Link	Bond lengths			Bond angles		
					Counts	RMSZ	# Z > 2	Counts	RMSZ	# Z > 2
4	CK4	C	1297	-	22,26,26	0.98	2 (9%)	29,38,38	2.50	8 (27%)
4	CK4	A	1297	-	22,26,26	1.07	2 (9%)	29,38,38	2.39	8 (27%)

In the following table, the Chirals column lists the number of chiral outliers, the number of chiral centers analysed, the number of these observed in the model and the number defined in the Chemical Component Dictionary. Similar counts are reported in the Torsion and Rings columns. '-' means no outliers of that kind were identified.

Mol	Type	Chain	Res	Link	Chirals	Torsions	Rings
4	CK4	C	1297	-	-	0/10/14/14	0/3/3/3
4	CK4	A	1297	-	-	0/10/14/14	0/3/3/3

All (4) bond length outliers are listed below:

Mol	Chain	Res	Type	Atoms	Z	Observed(Å)	Ideal(Å)
4	A	1297	CK4	C4-C5A	-3.68	1.40	1.49
4	C	1297	CK4	C4-C5A	-3.35	1.41	1.49
4	A	1297	CK4	C1B-N7	-2.25	1.35	1.40
4	C	1297	CK4	C1B-N7	-2.22	1.35	1.40

All (16) bond angle outliers are listed below:

Mol	Chain	Res	Type	Atoms	Z	Observed(°)	Ideal(°)
4	A	1297	CK4	C4-N3-C2	5.88	121.54	116.69
4	C	1297	CK4	C6-N1-C2	5.77	120.57	115.45
4	C	1297	CK4	N1-C2-N3	-5.73	121.12	126.55
4	C	1297	CK4	C4-N3-C2	5.68	121.37	116.69
4	A	1297	CK4	N1-C2-N3	-5.66	121.19	126.55
4	A	1297	CK4	C6-N1-C2	5.22	120.08	115.45
4	A	1297	CK4	C5A-C4-N3	4.37	121.70	116.59
4	C	1297	CK4	C5-C6-N1	-3.89	119.12	123.96
4	C	1297	CK4	C5A-C4-N3	3.72	120.94	116.59
4	C	1297	CK4	C5-C4-N3	-3.53	117.39	121.97
4	A	1297	CK4	C5-C4-N3	-3.47	117.47	121.97
4	C	1297	CK4	C6-C5-C4	3.27	120.31	117.22
4	C	1297	CK4	F1B-C7B-C4B	-3.01	106.32	112.93
4	A	1297	CK4	C5-C6-N1	-2.92	120.33	123.96

Continued on next page...

Continued from previous page...

Mol	Chain	Res	Type	Atoms	Z	Observed(°)	Ideal(°)
4	A	1297	CK4	C3B-C4B-C7B	2.38	123.75	119.97
4	A	1297	CK4	C6-C5-C4	2.25	119.34	117.22

There are no chirality outliers.

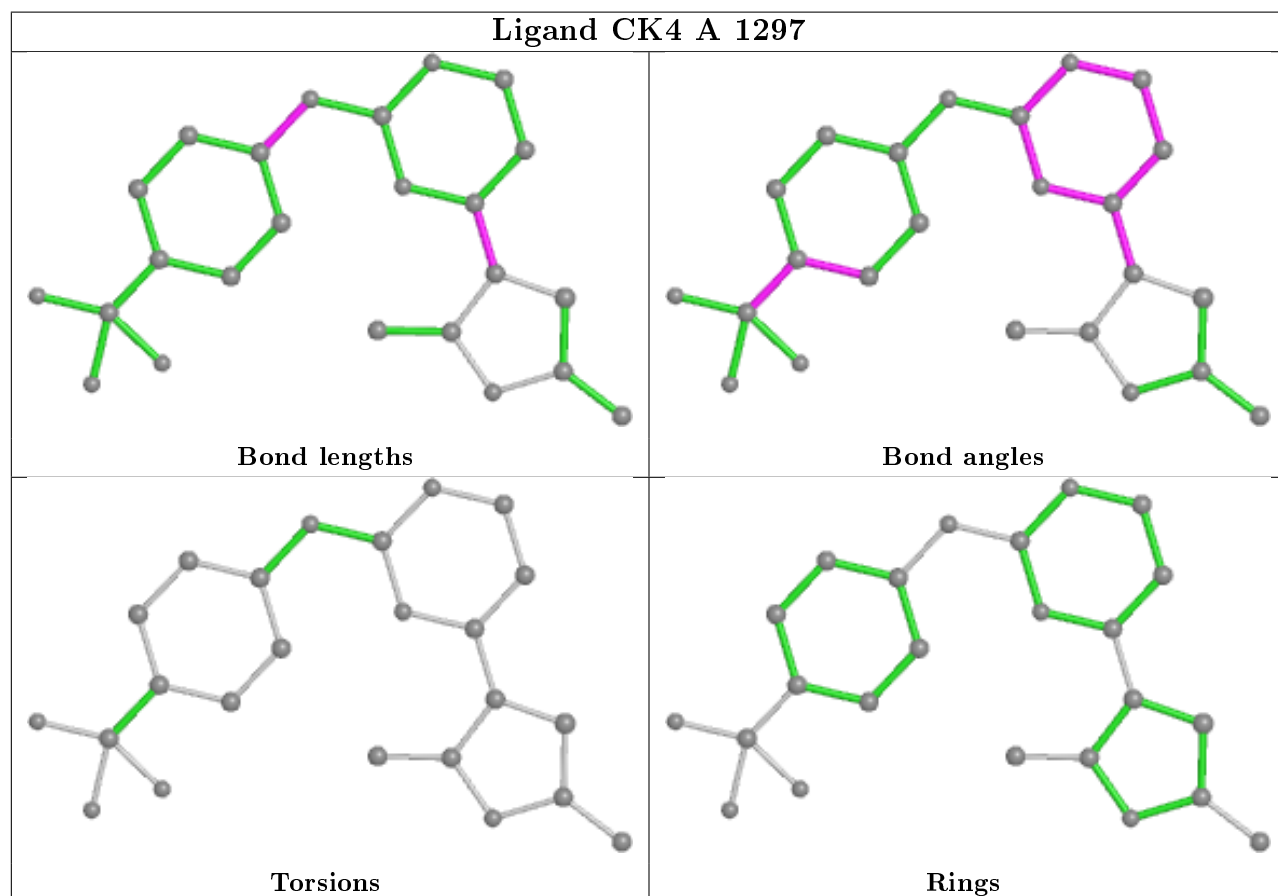
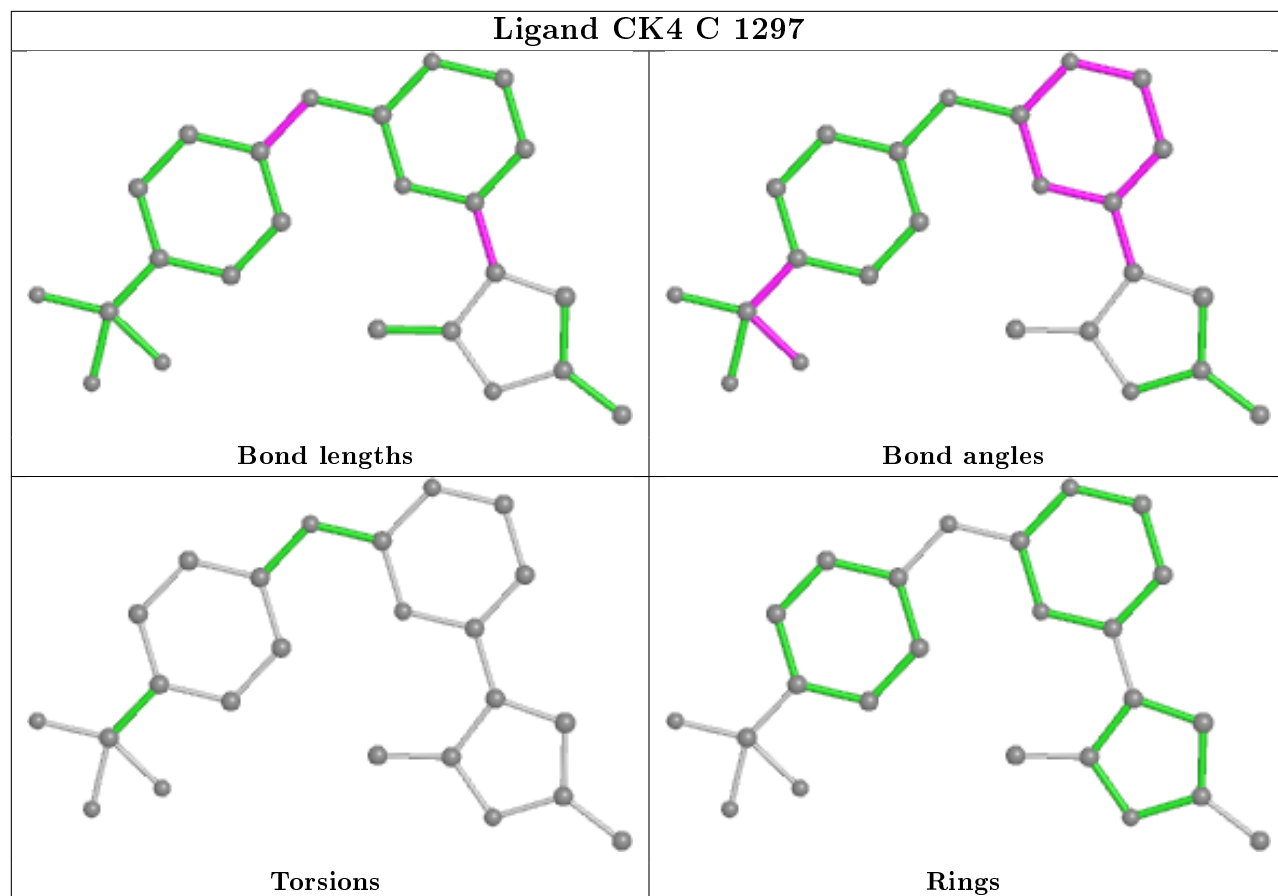
There are no torsion outliers.

There are no ring outliers.

2 monomers are involved in 14 short contacts:

Mol	Chain	Res	Type	Clashes	Symm-Clashes
4	C	1297	CK4	5	0
4	A	1297	CK4	9	0

The following is a two-dimensional graphical depiction of Mogul quality analysis of bond lengths, bond angles, torsion angles, and ring geometry for all instances of the Ligand of Interest. In addition, ligands with molecular weight > 250 and outliers as shown on the validation Tables will also be included. For torsion angles, if less than 5% of the Mogul distribution of torsion angles is within 10 degrees of the torsion angle in question, then that torsion angle is considered an outlier. Any bond that is central to one or more torsion angles identified as an outlier by Mogul will be highlighted in the graph. For rings, the root-mean-square deviation (RMSD) between the ring in question and similar rings identified by Mogul is calculated over all ring torsion angles. If the average RMSD is greater than 60 degrees and the minimal RMSD between the ring in question and any Mogul-identified rings is also greater than 60 degrees, then that ring is considered an outlier. The outliers are highlighted in purple. The color gray indicates Mogul did not find sufficient equivalents in the CSD to analyse the geometry.



5.7 Other polymers

There are no such residues in this entry.

5.8 Polymer linkage issues

There are no chain breaks in this entry.

6 Fit of model and data ⓘ

6.1 Protein, DNA and RNA chains ⓘ

In the following table, the column labelled ‘#RSRZ> 2’ contains the number (and percentage) of RSRZ outliers, followed by percent RSRZ outliers for the chain as percentile scores relative to all X-ray entries and entries of similar resolution. The OWAB column contains the minimum, median, 95th percentile and maximum values of the occupancy-weighted average B-factor per residue. The column labelled ‘Q< 0.9’ lists the number of (and percentage) of residues with an average occupancy less than 0.9.

Mol	Chain	Analysed	<RSRZ>	#RSRZ>2	OWAB(Å ²)	Q<0.9
1	A	296/298 (99%)	-0.58	4 (1%) 75 75	14, 33, 73, 107	0
1	C	296/298 (99%)	-0.50	6 (2%) 65 63	13, 34, 74, 106	0
2	B	258/259 (99%)	-0.63	2 (0%) 86 86	19, 37, 60, 103	0
2	D	258/259 (99%)	-0.62	2 (0%) 86 86	16, 36, 58, 102	0
3	F	6/9 (66%)	-0.40	0 100 100	45, 47, 54, 58	0
3	H	6/9 (66%)	0.08	1 (16%) 1 1	15, 25, 72, 76	0
All	All	1120/1132 (98%)	-0.58	15 (1%) 77 77	13, 35, 67, 107	0

All (15) RSRZ outliers are listed below:

Mol	Chain	Res	Type	RSRZ
3	H	501	ALA	4.3
2	D	175	VAL	3.6
1	C	40	GLU	3.5
1	C	13	GLY	3.4
1	C	39	THR	3.4
1	A	39	THR	3.0
1	A	15	TYR	3.0
1	C	163	VAL	2.8
1	A	96	LEU	2.6
1	A	40	GLU	2.4
1	C	162	GLU	2.3
2	B	378	ARG	2.2
2	B	271	TYR	2.2
1	C	36	ARG	2.2
2	D	176	PRO	2.1

6.2 Non-standard residues in protein, DNA, RNA chains [i](#)

In the following table, the Atoms column lists the number of modelled atoms in the group and the number defined in the chemical component dictionary. The B-factors column lists the minimum, median, 95th percentile and maximum values of B factors of atoms in the group. The column labelled 'Q< 0.9' lists the number of atoms with occupancy less than 0.9.

Mol	Type	Chain	Res	Atoms	RSCC	RSR	B-factors(\AA^2)	Q<0.9
3	PFF	F	508	12/13	0.89	0.19	56,64,72,72	0
3	ABA	H	503	6/7	0.95	0.10	24,37,52,53	0
3	PFF	H	508	12/13	0.95	0.13	25,34,44,44	0
3	ABA	F	503	6/7	0.97	0.11	12,42,54,56	0

6.3 Carbohydrates [i](#)

There are no carbohydrates in this entry.

6.4 Ligands [i](#)

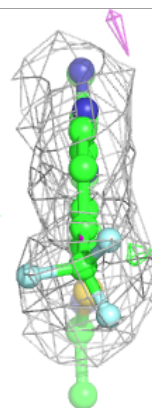
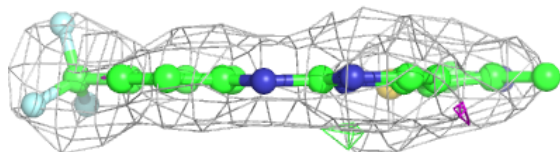
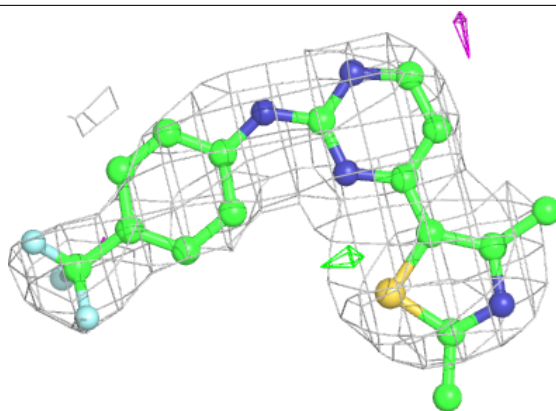
In the following table, the Atoms column lists the number of modelled atoms in the group and the number defined in the chemical component dictionary. The B-factors column lists the minimum, median, 95th percentile and maximum values of B factors of atoms in the group. The column labelled 'Q< 0.9' lists the number of atoms with occupancy less than 0.9.

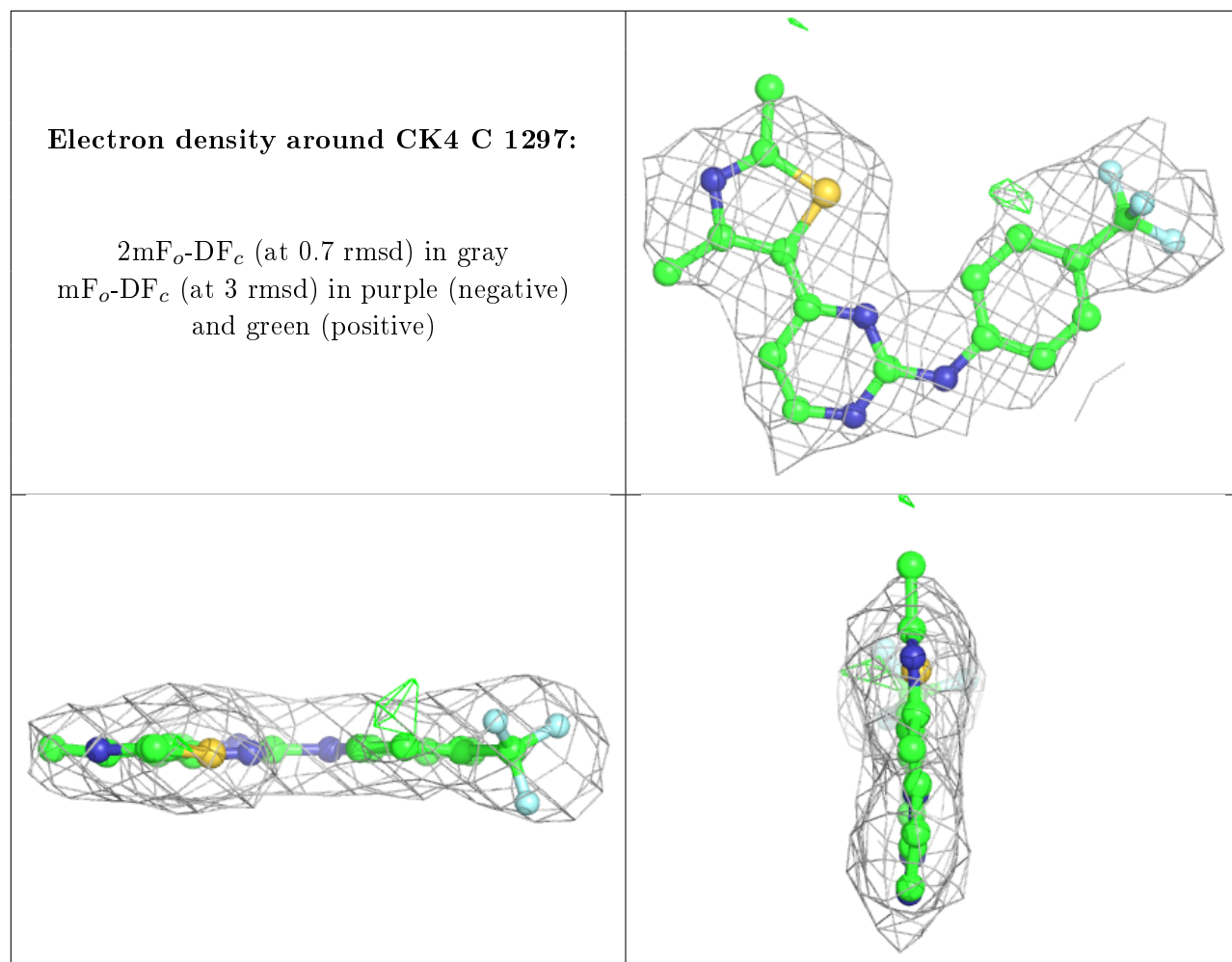
Mol	Type	Chain	Res	Atoms	RSCC	RSR	B-factors(\AA^2)	Q<0.9
4	CK4	A	1297	24/24	0.90	0.21	72,77,80,92	0
4	CK4	C	1297	24/24	0.94	0.14	42,54,58,59	0

The following is a graphical depiction of the model fit to experimental electron density of all instances of the Ligand of Interest. In addition, ligands with molecular weight > 250 and outliers as shown on the geometry validation Tables will also be included. Each fit is shown from different orientation to approximate a three-dimensional view.

Electron density around CK4 A 1297:

$2mF_o - DF_c$ (at 0.7 rmsd) in gray
 $mF_o - DF_c$ (at 3 rmsd) in purple (negative)
and green (positive)





6.5 Other polymers ⓘ

There are no such residues in this entry.