



# Full wwPDB X-ray Structure Validation Report ⓘ

May 27, 2020 – 03:01 am BST

PDB ID : 5C5J  
Title : Polymerase Nucleotide complex  
Authors : Nair, D.T.; Kottur, J.  
Deposited on : 2015-06-20  
Resolution : 2.10 Å(reported)

This is a Full wwPDB X-ray Structure Validation Report for a publicly released PDB entry.

We welcome your comments at [validation@mail.wwpdb.org](mailto:validation@mail.wwpdb.org)

A user guide is available at

<https://www.wwpdb.org/validation/2017/XrayValidationReportHelp>

with specific help available everywhere you see the ⓘ symbol.

---

The following versions of software and data (see [references ⓘ](#)) were used in the production of this report:

MolProbity : 4.02b-467  
Mogul : 1.8.5 (274361), CSD as541be (2020)  
Xtriage (Phenix) : 1.13  
EDS : 2.11  
buster-report : 1.1.7 (2018)  
Percentile statistics : 20191225.v01 (using entries in the PDB archive December 25th 2019)  
Refmac : 5.8.0158  
CCP4 : 7.0.044 (Gargrove)  
Ideal geometry (proteins) : Engh & Huber (2001)  
Ideal geometry (DNA, RNA) : Parkinson et al. (1996)  
Validation Pipeline (wwPDB-VP) : 2.11

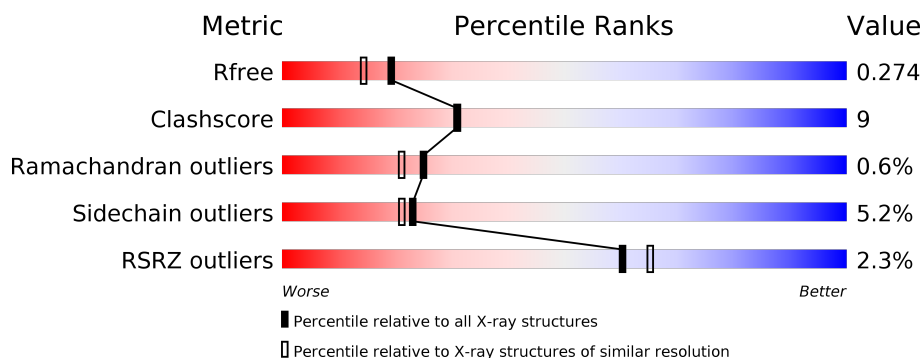
# 1 Overall quality at a glance ⓘ

The following experimental techniques were used to determine the structure:

*X-RAY DIFFRACTION*

The reported resolution of this entry is 2.10 Å.

Percentile scores (ranging between 0-100) for global validation metrics of the entry are shown in the following graphic. The table shows the number of entries on which the scores are based.



Metric	Whole archive (#Entries)	Similar resolution (#Entries, resolution range(Å))
$R_{free}$	130704	5197 (2.10-2.10)
Clashscore	141614	5710 (2.10-2.10)
Ramachandran outliers	138981	5647 (2.10-2.10)
Sidechain outliers	138945	5648 (2.10-2.10)
RSRZ outliers	127900	5083 (2.10-2.10)

The table below summarises the geometric issues observed across the polymeric chains and their fit to the electron density. The red, orange, yellow and green segments on the lower bar indicate the fraction of residues that contain outliers for  $\geq 3$ , 2, 1 and 0 types of geometric quality criteria respectively. A grey segment represents the fraction of residues that are not modelled. The numeric value for each fraction is indicated below the corresponding segment, with a dot representing fractions  $\leq 5\%$ . The upper red bar (where present) indicates the fraction of residues that have poor fit to the electron density. The numeric value is given above the bar.

Mol	Chain	Length	Quality of chain
1	A	352	<div> <div>2%</div> <div> <div></div> <div>78%</div> <div>16%</div> <div>• •</div> </div> </div>
1	F	352	<div> <div>2%</div> <div> <div></div> <div>74%</div> <div>21%</div> <div>• •</div> </div> </div>
2	B	18	<div> <div></div> <div> <div>72%</div> <div>28%</div> </div> </div>
2	C	18	<div> <div>6%</div> <div> <div></div> <div>61%</div> <div>22%</div> <div>11%</div> <div>6%</div> </div> </div>
2	G	18	<div> <div>6%</div> <div> <div></div> <div>50%</div> <div>39%</div> <div>11%</div> </div> </div>
2	H	18	<div> <div>6%</div> <div> <div></div> <div>39%</div> <div>39%</div> <div>22%</div> </div> </div>

## 2 Entry composition

There are 5 unique types of molecules in this entry. The entry contains 7204 atoms, of which 0 are hydrogens and 0 are deuteriums.

In the tables below, the ZeroOcc column contains the number of atoms modelled with zero occupancy, the AltConf column contains the number of residues with at least one atom in alternate conformation and the Trace column contains the number of residues modelled with at most 2 atoms.

- Molecule 1 is a protein called DNA polymerase IV.

Mol	Chain	Residues	Atoms					ZeroOcc	AltConf	Trace
1	F	342	Total	C	N	O	S	0	0	0
			2687	1695	494	484	14			
1	A	342	Total	C	N	O	S	0	0	0
			2687	1695	494	484	14			

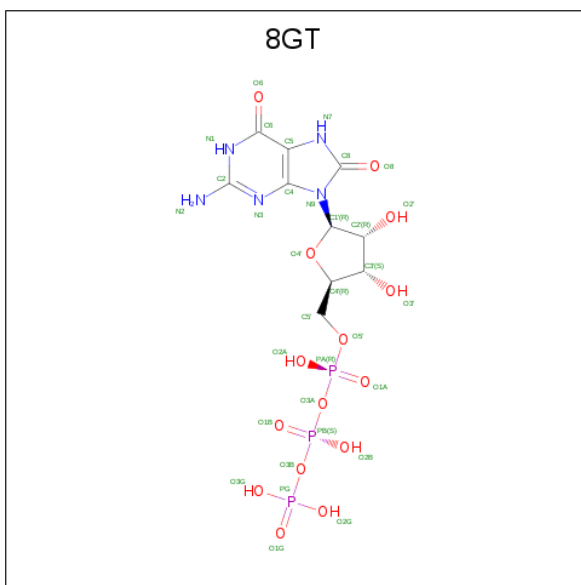
There are 4 discrepancies between the modelled and reference sequences:

Chain	Residue	Modelled	Actual	Comment	Reference
F	0	GLY	-	expression tag	UNP W8STT9
F	1	SER	-	expression tag	UNP W8STT9
A	0	GLY	-	expression tag	UNP W8STT9
A	1	SER	-	expression tag	UNP W8STT9

- Molecule 2 is a DNA chain called DNA (5'-D(\*TP\*CP\*TP\*AP\*GP\*GP\*GP\*TP\*CP\*CP\*TP\*AP\*GP\*GP\*AP\*CP\*CP\*C)-3').

Mol	Chain	Residues	Atoms					ZeroOcc	AltConf	Trace
2	G	18	Total	C	N	O	P	0	0	0
			364	174	66	107	17			
2	H	14	Total	C	N	O	P	0	0	0
			283	135	54	81	13			
2	B	18	Total	C	N	O	P	0	0	0
			364	174	66	107	17			
2	C	17	Total	C	N	O	P	0	0	0
			343	164	64	99	16			

- Molecule 3 is 8-OXO-GUANOSINE-5'-TRIPHOSPHATE (three-letter code: 8GT) (formula: C<sub>10</sub>H<sub>16</sub>N<sub>5</sub>O<sub>15</sub>P<sub>3</sub>).



Mol	Chain	Residues	Atoms					ZeroOcc	AltConf
3	A	1	Total	C	N	O	P	0	0
			32	10	5	14	3		

- Molecule 4 is MAGNESIUM ION (three-letter code: MG) (formula: Mg).

Mol	Chain	Residues	Atoms	ZeroOcc	AltConf
4	A	1	Total Mg 1 1	0	0

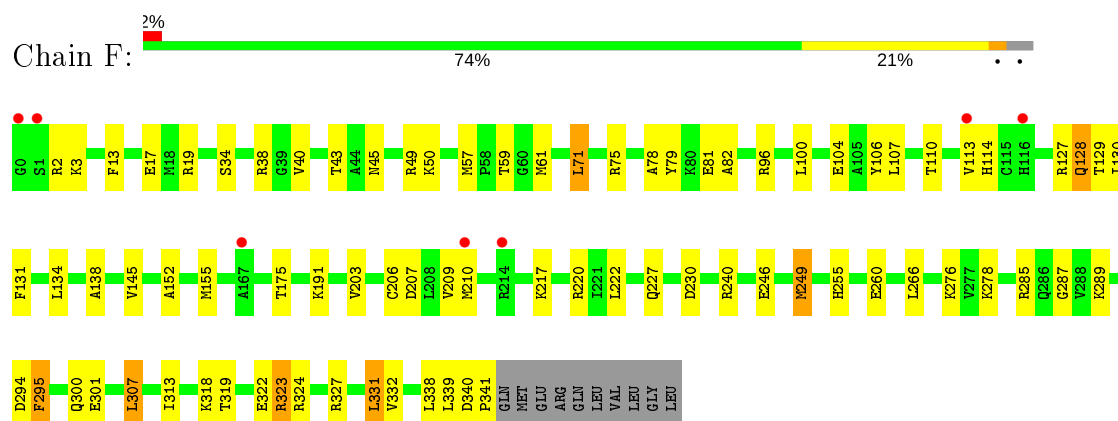
- Molecule 5 is water.

Mol	Chain	Residues	Atoms	ZeroOcc	AltConf
5	F	186	Total O 186 186	0	0
5	A	151	Total O 151 151	0	0
5	G	28	Total O 28 28	0	0
5	H	26	Total O 26 26	0	0
5	B	25	Total O 25 25	0	0
5	C	27	Total O 27 27	0	0

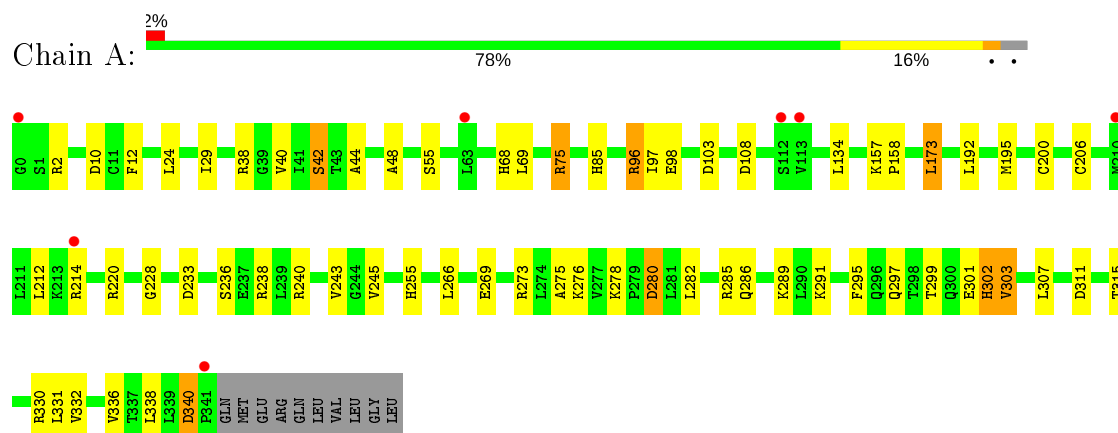
### 3 Residue-property plots [i](#)

These plots are drawn for all protein, RNA and DNA chains in the entry. The first graphic for a chain summarises the proportions of the various outlier classes displayed in the second graphic. The second graphic shows the sequence view annotated by issues in geometry and electron density. Residues are color-coded according to the number of geometric quality criteria for which they contain at least one outlier: green = 0, yellow = 1, orange = 2 and red = 3 or more. A red dot above a residue indicates a poor fit to the electron density ( $RSRZ > 2$ ). Stretches of 2 or more consecutive residues without any outlier are shown as a green connector. Residues present in the sample, but not in the model, are shown in grey.

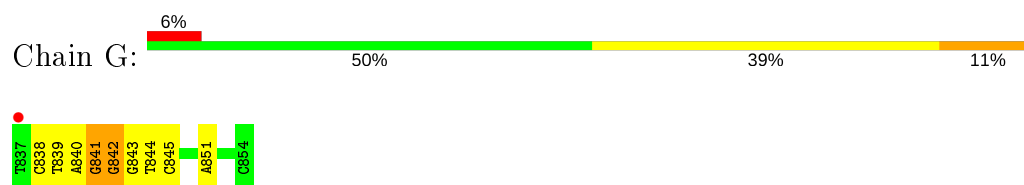
#### • Molecule 1: DNA polymerase IV



#### • Molecule 1: DNA polymerase IV



#### • Molecule 2: DNA (5'-D(\*TP\*CP\*TP\*AP\*GP\*GP\*GP\*TP\*CP\*CP\*TP\*AP\*GP\*GP\*AP\*CP\*CP\*C)-3')



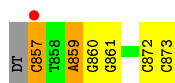
- Molecule 2: DNA (5'-D(\*TP\*CP\*TP\*AP\*GP\*GP\*GP\*TP\*CP\*CP\*TP\*AP\*GP\*GP\*AP\*CP\*CP\*C)-3')



- Molecule 2: DNA (5'-D(\*TP\*CP\*TP\*AP\*GP\*GP\*GP\*TP\*CP\*CP\*TP\*AP\*GP\*GP\*AP\*CP\*CP\*C)-3')



- Molecule 2: DNA (5'-D(\*TP\*CP\*TP\*AP\*GP\*GP\*GP\*TP\*CP\*CP\*TP\*AP\*GP\*GP\*AP\*CP\*CP\*C)-3')



## 4 Data and refinement statistics

Property	Value	Source
Space group	P 1 21 1	Depositor
Cell constants a, b, c, $\alpha$ , $\beta$ , $\gamma$	86.45Å 57.38Å 110.64Å 90.00° 94.51° 90.00°	Depositor
Resolution (Å)	36.91 – 2.10 39.11 – 2.10	Depositor EDS
% Data completeness (in resolution range)	99.5 (36.91-2.10) 99.7 (39.11-2.10)	Depositor EDS
$R_{merge}$	0.07	Depositor
$R_{sym}$	0.08	Depositor
$\langle I/\sigma(I) \rangle$ <sup>1</sup>	2.26 (at 2.10Å)	Xtriage
Refinement program	PHENIX (1.10.1 _2155: ???)	Depositor
R, $R_{free}$	0.222 , 0.274 0.223 , 0.274	Depositor DCC
$R_{free}$ test set	3222 reflections (5.08%)	wwPDB-VP
Wilson B-factor (Å <sup>2</sup> )	41.9	Xtriage
Anisotropy	0.400	Xtriage
Bulk solvent $k_{sol}$ (e/Å <sup>3</sup> ), $B_{sol}$ (Å <sup>2</sup> )	0.32 , 42.9	EDS
L-test for twinning <sup>2</sup>	$\langle  L  \rangle = 0.49$ , $\langle L^2 \rangle = 0.32$	Xtriage
Estimated twinning fraction	No twinning to report.	Xtriage
$F_o, F_c$ correlation	0.94	EDS
Total number of atoms	7204	wwPDB-VP
Average B, all atoms (Å <sup>2</sup> )	48.0	wwPDB-VP

Xtriage's analysis on translational NCS is as follows: *The largest off-origin peak in the Patterson function is 4.53% of the height of the origin peak. No significant pseudotranslation is detected.*

<sup>1</sup>Intensities estimated from amplitudes.

<sup>2</sup>Theoretical values of  $\langle |L| \rangle$ ,  $\langle L^2 \rangle$  for acentric reflections are 0.5, 0.333 respectively for untwinned datasets, and 0.375, 0.2 for perfectly twinned datasets.

## 5 Model quality ⓘ

### 5.1 Standard geometry ⓘ

Bond lengths and bond angles in the following residue types are not validated in this section: MG, 8GT

The Z score for a bond length (or angle) is the number of standard deviations the observed value is removed from the expected value. A bond length (or angle) with  $|Z| > 5$  is considered an outlier worth inspection. RMSZ is the root-mean-square of all Z scores of the bond lengths (or angles).

Mol	Chain	Bond lengths		Bond angles	
		RMSZ	$\# Z  > 5$	RMSZ	$\# Z  > 5$
1	A	0.39	0/2738	0.60	1/3699 (0.0%)
1	F	0.45	0/2738	0.66	1/3699 (0.0%)
2	B	0.98	0/407	1.11	1/626 (0.2%)
2	C	0.97	1/384 (0.3%)	1.00	1/590 (0.2%)
2	G	1.15	1/407 (0.2%)	1.20	2/626 (0.3%)
2	H	1.02	0/317	0.95	0/487
All	All	0.61	2/6991 (0.0%)	0.76	6/9727 (0.1%)

All (2) bond length outliers are listed below:

Mol	Chain	Res	Type	Atoms	Z	Observed(Å)	Ideal(Å)
2	C	857	DC	C1'-N1	5.59	1.56	1.49
2	G	842	DG	O5'-C5'	-5.45	1.28	1.42

All (6) bond angle outliers are listed below:

Mol	Chain	Res	Type	Atoms	Z	Observed(°)	Ideal(°)
2	G	841	DG	OP1-P-OP2	8.03	131.65	119.60
2	B	850	DG	O4'-C1'-N9	7.59	113.31	108.00
2	G	842	DG	O5'-P-OP1	-7.00	99.40	105.70
1	A	75	ARG	NE-CZ-NH1	-5.72	117.44	120.30
2	C	859	DA	O5'-P-OP2	-5.10	101.11	105.70
1	F	307	LEU	CA-CB-CG	5.06	126.94	115.30

There are no chirality outliers.

There are no planarity outliers.



## 5.2 Too-close contacts ⓘ

In the following table, the Non-H and H(model) columns list the number of non-hydrogen atoms and hydrogen atoms in the chain respectively. The H(added) column lists the number of hydrogen atoms added and optimized by MolProbity. The Clashes column lists the number of clashes within the asymmetric unit, whereas Symm-Clashes lists symmetry related clashes.

Mol	Chain	Non-H	H(model)	H(added)	Clashes	Symm-Clashes
1	A	2687	0	2739	44	0
1	F	2687	0	2739	55	1
2	B	364	0	204	8	0
2	C	343	0	190	5	1
2	G	364	0	204	7	0
2	H	283	0	156	6	0
3	A	32	0	10	3	0
4	A	1	0	0	0	0
5	A	151	0	0	7	1
5	B	25	0	0	0	0
5	C	27	0	0	1	0
5	F	186	0	0	14	0
5	G	28	0	0	1	0
5	H	26	0	0	0	0
All	All	7204	0	6242	118	2

The all-atom clashscore is defined as the number of clashes found per 1000 atoms (including hydrogen atoms). The all-atom clashscore for this structure is 9.

All (118) close contacts within the same asymmetric unit are listed below, sorted by their clash magnitude.

Atom-1	Atom-2	Interatomic distance (Å)	Clash overlap (Å)
1:A:240:ARG:NH2	2:B:843:DG:OP1	2.01	0.94
1:F:128:GLN:O	1:F:130:ILE:N	2.11	0.83
1:F:285:ARG:NH1	2:H:866:DT:OP2	2.12	0.82
1:F:57:MET:HG3	1:F:61:MET:HE2	1.62	0.81
1:F:191:LYS:NZ	5:F:402:HOH:O	2.15	0.80
1:F:246:GLU:OE1	1:F:289:LYS:NZ	2.14	0.79
1:F:81:GLU:OE1	5:F:401:HOH:O	2.03	0.75
1:F:300:GLN:HE22	1:F:318:LYS:HE3	1.50	0.74
1:A:291:LYS:NZ	5:A:508:HOH:O	2.23	0.72
1:A:69:LEU:O	5:A:501:HOH:O	2.11	0.69
1:F:19:ARG:NH2	5:F:401:HOH:O	2.27	0.67
1:F:340:ASP:N	1:F:341:PRO:HD2	2.10	0.67
1:F:255:HIS:ND1	5:F:409:HOH:O	2.28	0.66

*Continued on next page...*

*Continued from previous page...*

Atom-1	Atom-2	Interatomic distance (Å)	Clash overlap (Å)
2:G:851:DA:OP1	5:G:901:HOH:O	2.13	0.65
1:A:240:ARG:HH21	1:A:243:VAL:HG22	1.62	0.64
1:A:303:VAL:O	5:A:502:HOH:O	2.16	0.62
1:F:294:ASP:O	1:F:295:PHE:HB2	2.00	0.61
1:A:278:LYS:HE3	1:A:280:ASP:OD2	2.01	0.61
1:F:45:ASN:O	1:F:49:ARG:HG3	2.01	0.61
1:A:301:GLU:OE1	5:A:504:HOH:O	2.17	0.60
1:F:175:THR:OG1	5:F:403:HOH:O	2.16	0.60
1:F:318:LYS:NZ	1:F:322:GLU:OE1	2.32	0.60
1:F:324:ARG:O	1:F:327:ARG:HG3	2.02	0.58
1:A:96:ARG:NH2	1:A:233:ASP:OD1	2.37	0.58
1:A:108:ASP:OD2	5:A:503:HOH:O	2.16	0.57
1:F:38:ARG:NH1	5:F:408:HOH:O	2.38	0.57
1:A:285:ARG:NH2	1:A:302:HIS:HA	2.20	0.57
1:F:96:ARG:NH1	5:F:410:HOH:O	2.30	0.57
1:A:97:ILE:O	1:A:236:SER:HA	2.05	0.56
2:H:872:DC:H2'	2:H:873:DC:C6	2.40	0.56
1:F:145:VAL:HB	1:F:230:ASP:HB3	1.87	0.56
1:F:127:ARG:HD2	1:F:138:ALA:O	2.05	0.55
1:A:340:ASP:OD1	1:A:340:ASP:N	2.37	0.55
1:F:2:ARG:NH2	1:F:230:ASP:O	2.41	0.54
1:A:275:ALA:HB3	1:A:276:LYS:NZ	2.23	0.54
1:F:276:LYS:NZ	5:F:414:HOH:O	2.33	0.54
2:B:841:DG:H2''	2:B:842:DG:H5''	1.91	0.52
1:A:330:ARG:NH2	2:B:839:DT:H5'	2.25	0.52
1:F:300:GLN:NE2	1:F:318:LYS:HE3	2.23	0.52
1:A:157:LYS:HE2	3:A:401:8GT:O1G	2.09	0.51
1:F:3:LYS:HE2	1:F:110:THR:HA	1.92	0.51
1:F:50:LYS:NZ	5:F:423:HOH:O	2.43	0.51
2:G:838:DC:H4'	2:G:839:DT:H5'	1.93	0.51
1:A:157:LYS:HG2	1:A:158:PRO:HA	1.93	0.51
2:C:859:DA:H2''	2:C:860:DG:N7	2.26	0.51
1:A:173:LEU:HD21	1:A:228:GLY:N	2.26	0.50
1:F:300:GLN:OE1	1:F:319:THR:OG1	2.21	0.50
1:A:212:LEU:HD21	1:A:220:ARG:HB2	1.94	0.50
2:C:861:DG:OP2	5:C:901:HOH:O	2.19	0.50
1:F:227:GLN:OE1	5:F:404:HOH:O	2.19	0.50
1:F:217:LYS:HE2	1:F:220:ARG:HE	1.78	0.49
1:A:291:LYS:HB3	1:A:331:LEU:HB3	1.93	0.49
1:F:13:PHE:HB2	1:F:43:THR:CG2	2.43	0.49
1:A:285:ARG:HH21	1:A:302:HIS:HA	1.78	0.49

*Continued on next page...*

*Continued from previous page...*

Atom-1	Atom-2	Interatomic distance (Å)	Clash overlap (Å)
1:F:152:ALA:HA	1:F:155:MET:HG2	1.94	0.48
1:A:12:PHE:CD2	1:A:103:ASP:HB3	2.48	0.48
1:A:330:ARG:HH22	2:B:839:DT:H5'	1.78	0.48
1:F:289:LYS:HD2	1:F:331:LEU:HD11	1.96	0.48
2:C:872:DC:H2'	2:C:873:DC:C6	2.50	0.47
2:C:872:DC:H2''	2:C:873:DC:H5'	1.95	0.47
1:F:287:GLY:HA3	1:F:301:GLU:HB3	1.96	0.47
1:F:59:THR:HG21	1:F:71:LEU:HD21	1.96	0.47
2:G:842:DG:H2'	2:G:843:DG:O4'	2.15	0.47
1:A:24:LEU:HB3	1:A:29:ILE:HG21	1.96	0.47
1:F:104:GLU:OE1	5:F:406:HOH:O	2.21	0.47
1:F:294:ASP:O	1:A:255:HIS:ND1	2.46	0.47
1:A:291:LYS:HG3	1:A:297:GLN:HB3	1.98	0.46
1:F:34:SER:HA	1:F:71:LEU:HD23	1.97	0.46
1:F:40:VAL:HG13	2:G:840:DA:H5'	1.97	0.46
1:F:207:ASP:OD2	1:F:209:VAL:HB	2.15	0.45
1:A:38:ARG:HD2	2:B:839:DT:OP2	2.16	0.45
1:F:249:MET:HE2	1:F:249:MET:HB3	1.82	0.45
1:A:44:ALA:HB1	1:A:48:ALA:HB3	1.98	0.45
2:G:838:DC:H1'	2:G:839:DT:C6	2.51	0.45
2:H:864:DC:H2'	2:H:865:DC:C6	2.52	0.45
1:A:98:GLU:OE2	1:A:238:ARG:HD2	2.17	0.45
1:A:85:HIS:CG	1:A:134:LEU:HD11	2.52	0.44
1:F:13:PHE:HB2	1:F:43:THR:HG21	1.99	0.44
1:F:78:ALA:O	1:F:81:GLU:OE2	2.35	0.44
1:A:10:ASP:OD1	1:A:157:LYS:HE3	2.17	0.44
2:B:839:DT:H6	2:B:839:DT:H5''	1.80	0.44
1:A:289:LYS:HB2	1:A:299:THR:HG22	1.99	0.44
1:A:315:THR:OG1	5:A:506:HOH:O	2.21	0.44
1:F:100:LEU:HD11	1:F:106:TYR:CE2	2.52	0.44
1:F:322:GLU:O	1:F:323:ARG:HG2	2.17	0.44
1:A:286:GLN:NE2	1:A:311:ASP:OD2	2.37	0.43
1:A:55:SER:HB3	3:A:401:8GT:N1	2.33	0.43
2:C:859:DA:H2''	2:C:860:DG:C8	2.54	0.43
1:F:260:GLU:OE2	1:F:313:ILE:HD13	2.18	0.43
2:H:861:DG:H5'	2:H:861:DG:C8	2.53	0.43
1:F:17:GLU:OE1	1:F:75:ARG:NH2	2.52	0.43
2:G:841:DG:H2''	2:G:842:DG:H5''	2.00	0.43
1:F:106:TYR:C	1:F:107:LEU:HD12	2.38	0.43
1:F:324:ARG:HD3	5:F:445:HOH:O	2.18	0.43
2:H:864:DC:H2''	2:H:865:DC:H5'	2.01	0.43

*Continued on next page...*

Continued from previous page...

Atom-1	Atom-2	Interatomic distance (Å)	Clash overlap (Å)
1:A:195:MET:HE1	1:A:214:ARG:HG2	2.01	0.42
2:G:844:DT:H2''	2:G:845:DC:H5'	2.01	0.42
1:A:157:LYS:HE2	3:A:401:8GT:PG	2.58	0.42
1:A:302:HIS:HE1	1:A:311:ASP:OD2	2.03	0.42
1:A:173:LEU:O	1:A:200:CYS:HB2	2.19	0.42
1:A:276:LYS:HD3	1:A:276:LYS:HA	1.85	0.42
1:F:339:LEU:C	1:F:341:PRO:HD2	2.40	0.42
1:A:42:SER:OG	5:A:507:HOH:O	2.22	0.41
1:A:280:ASP:OD2	1:A:282:LEU:HD12	2.21	0.41
2:B:842:DG:H2'	2:B:843:DG:O4'	2.20	0.41
2:B:839:DT:C6	2:B:839:DT:H5''	2.55	0.41
1:F:114:HIS:N	5:F:405:HOH:O	2.48	0.41
1:A:245:VAL:HG12	1:A:266:LEU:HD22	2.02	0.41
1:F:17:GLU:OE2	1:F:79:TYR:OH	2.24	0.41
1:F:323:ARG:HE	1:F:323:ARG:HB3	1.43	0.41
2:H:861:DG:C4	2:H:862:DG:C8	3.09	0.41
1:F:217:LYS:HD2	1:F:217:LYS:HA	1.75	0.41
1:F:285:ARG:HH21	1:F:301:GLU:HG3	1.86	0.41
1:A:269:GLU:O	1:A:273:ARG:HG3	2.21	0.40
1:F:278:LYS:NZ	5:F:433:HOH:O	2.54	0.40
1:F:81:GLU:OE2	1:F:82:ALA:N	2.52	0.40
1:F:203:VAL:O	1:F:206:CYS:HB2	2.21	0.40
1:A:285:ARG:HH12	1:A:301:GLU:HG3	1.87	0.40

All (2) symmetry-related close contacts are listed below. The label for Atom-2 includes the symmetry operator and encoded unit-cell translations to be applied.

Atom-1	Atom-2	Interatomic distance (Å)	Clash overlap (Å)
1:F:240:ARG:NH1	2:C:857:DC:O5'[2_555]	2.10	0.10
5:A:609:HOH:O	5:A:613:HOH:O[2_554]	2.15	0.05

## 5.3 Torsion angles [i](#)

### 5.3.1 Protein backbone [i](#)

In the following table, the Percentiles column shows the percent Ramachandran outliers of the chain as a percentile score with respect to all X-ray entries followed by that with respect to entries of similar resolution.

The Analysed column shows the number of residues for which the backbone conformation was

analysed, and the total number of residues.

Mol	Chain	Analysed	Favoured	Allowed	Outliers	Percentiles	
1	A	340/352 (97%)	334 (98%)	6 (2%)	0	100	100
1	F	340/352 (97%)	323 (95%)	13 (4%)	4 (1%)	13	8
All	All	680/704 (97%)	657 (97%)	19 (3%)	4 (1%)	25	21

All (4) Ramachandran outliers are listed below:

Mol	Chain	Res	Type
1	F	129	THR
1	F	128	GLN
1	F	295	PHE
1	F	113	VAL

### 5.3.2 Protein sidechains ⓘ

In the following table, the Percentiles column shows the percent sidechain outliers of the chain as a percentile score with respect to all X-ray entries followed by that with respect to entries of similar resolution.

The Analysed column shows the number of residues for which the sidechain conformation was analysed, and the total number of residues.

Mol	Chain	Analysed	Rotameric	Outliers	Percentiles	
1	A	286/297 (96%)	268 (94%)	18 (6%)	18	15
1	F	286/297 (96%)	274 (96%)	12 (4%)	30	30
All	All	572/594 (96%)	542 (95%)	30 (5%)	23	21

All (30) residues with a non-rotameric sidechain are listed below:

Mol	Chain	Res	Type
1	F	71	LEU
1	F	131	PHE
1	F	134	LEU
1	F	210	MET
1	F	222	LEU
1	F	249	MET
1	F	266	LEU
1	F	307	LEU
1	F	323	ARG
1	F	331	LEU

*Continued on next page...*

*Continued from previous page...*

Mol	Chain	Res	Type
1	F	332	VAL
1	F	338	LEU
1	A	2	ARG
1	A	40	VAL
1	A	42	SER
1	A	68	HIS
1	A	75	ARG
1	A	96	ARG
1	A	173	LEU
1	A	192	LEU
1	A	206	CYS
1	A	280	ASP
1	A	295	PHE
1	A	302	HIS
1	A	303	VAL
1	A	307	LEU
1	A	332	VAL
1	A	336	VAL
1	A	338	LEU
1	A	340	ASP

Some sidechains can be flipped to improve hydrogen bonding and reduce clashes. All (1) such sidechains are listed below:

Mol	Chain	Res	Type
1	A	227	GLN

### 5.3.3 RNA ⓘ

There are no RNA molecules in this entry.

## 5.4 Non-standard residues in protein, DNA, RNA chains ⓘ

There are no non-standard protein/DNA/RNA residues in this entry.

## 5.5 Carbohydrates ⓘ

There are no carbohydrates in this entry.

## 5.6 Ligand geometry

Of 2 ligands modelled in this entry, 1 is monoatomic - leaving 1 for Mogul analysis.

In the following table, the Counts columns list the number of bonds (or angles) for which Mogul statistics could be retrieved, the number of bonds (or angles) that are observed in the model and the number of bonds (or angles) that are defined in the Chemical Component Dictionary. The Link column lists molecule types, if any, to which the group is linked. The Z score for a bond length (or angle) is the number of standard deviations the observed value is removed from the expected value. A bond length (or angle) with  $|Z| > 2$  is considered an outlier worth inspection. RMSZ is the root-mean-square of all Z scores of the bond lengths (or angles).

Mol	Type	Chain	Res	Link	Bond lengths			Bond angles		
					Counts	RMSZ	# Z  > 2	Counts	RMSZ	# Z  > 2
3	8GT	A	401	4	26,34,35	5.27	16 (61%)	34,54,56	1.86	6 (17%)

In the following table, the Chirals column lists the number of chiral outliers, the number of chiral centers analysed, the number of these observed in the model and the number defined in the Chemical Component Dictionary. Similar counts are reported in the Torsion and Rings columns. '-' means no outliers of that kind were identified.

Mol	Type	Chain	Res	Link	Chirals	Torsions	Rings
3	8GT	A	401	4	-	2/18/34/38	0/3/3/3

All (16) bond length outliers are listed below:

Mol	Chain	Res	Type	Atoms	Z	Observed(Å)	Ideal(Å)
3	A	401	8GT	C8-N7	15.67	1.51	1.34
3	A	401	8GT	C2'-C3'	-10.61	1.24	1.52
3	A	401	8GT	C4-N3	7.88	1.48	1.35
3	A	401	8GT	C6-N1	7.54	1.46	1.33
3	A	401	8GT	C2-N1	7.02	1.47	1.35
3	A	401	8GT	C6-C5	6.18	1.52	1.41
3	A	401	8GT	C2-N2	5.85	1.45	1.33
3	A	401	8GT	C2'-C1'	5.28	1.67	1.52
3	A	401	8GT	O4'-C1'	-4.83	1.31	1.42
3	A	401	8GT	O3'-C3'	3.89	1.51	1.43
3	A	401	8GT	C5'-C4'	-3.54	1.40	1.51
3	A	401	8GT	C3'-C4'	3.12	1.61	1.53
3	A	401	8GT	C2-N3	2.96	1.48	1.34
3	A	401	8GT	O4'-C4'	2.79	1.51	1.45
3	A	401	8GT	O6-C6	-2.24	1.18	1.24
3	A	401	8GT	C1'-N9	-2.12	1.43	1.49

All (6) bond angle outliers are listed below:

Mol	Chain	Res	Type	Atoms	Z	Observed( $^{\circ}$ )	Ideal( $^{\circ}$ )
3	A	401	8GT	N3-C2-N1	-5.28	120.17	127.22
3	A	401	8GT	C2'-C1'-N9	-5.17	110.36	116.01
3	A	401	8GT	C2-N3-C4	4.41	120.39	115.36
3	A	401	8GT	PB-O3B-PG	-2.64	123.76	132.83
3	A	401	8GT	C5-C6-N1	-2.56	119.93	123.43
3	A	401	8GT	C6-N1-C2	2.20	119.42	115.93

There are no chirality outliers.

All (2) torsion outliers are listed below:

Mol	Chain	Res	Type	Atoms
3	A	401	8GT	PB-O3A-PA-O5'
3	A	401	8GT	C5'-O5'-PA-O3A

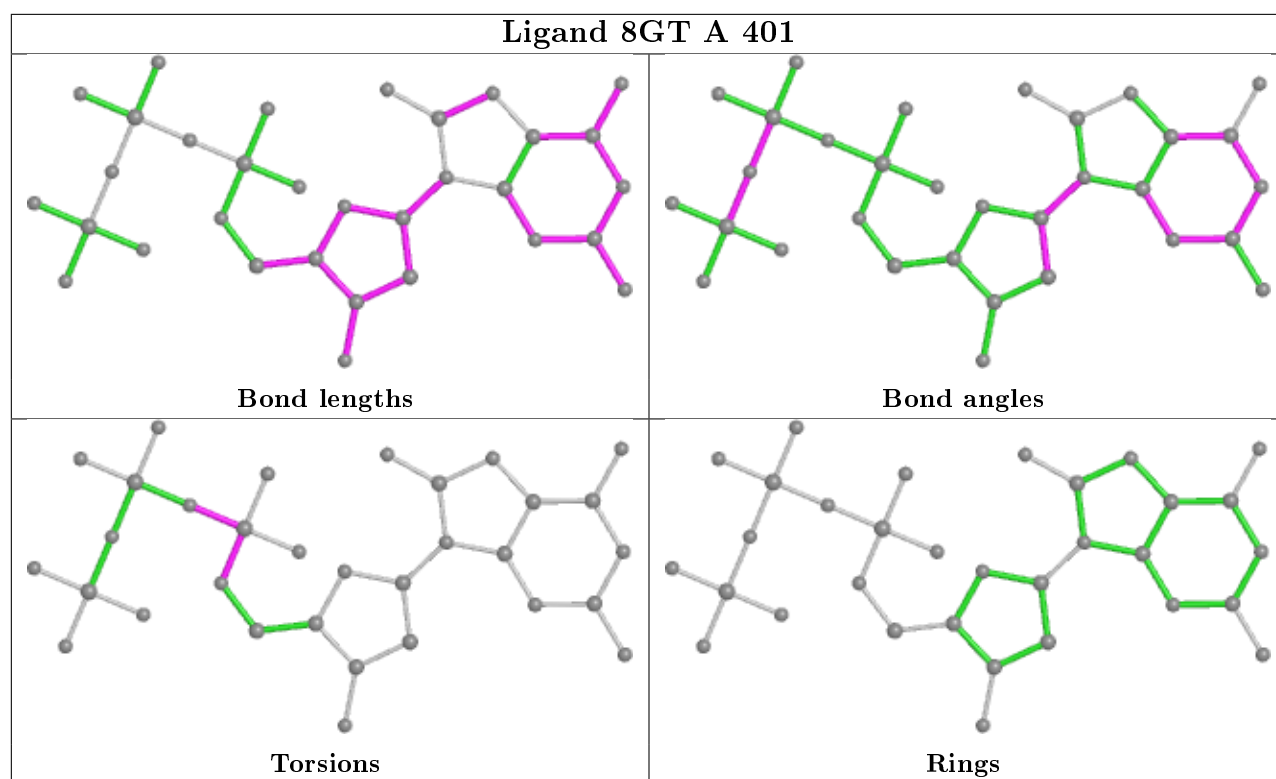
There are no ring outliers.

1 monomer is involved in 3 short contacts:

Mol	Chain	Res	Type	Clashes	Symm-Clashes
3	A	401	8GT	3	0

The following is a two-dimensional graphical depiction of Mogul quality analysis of bond lengths, bond angles, torsion angles, and ring geometry for all instances of the Ligand of Interest. In addition, ligands with molecular weight > 250 and outliers as shown on the validation Tables will also be included. For torsion angles, if less than 5% of the Mogul distribution of torsion angles is within 10 degrees of the torsion angle in question, then that torsion angle is considered an outlier. Any bond that is central to one or more torsion angles identified as an outlier by Mogul will be highlighted in the graph. For rings, the root-mean-square deviation (RMSD) between the ring in question and similar rings identified by Mogul is calculated over all ring torsion angles. If the average RMSD is greater than 60 degrees and the minimal RMSD between the ring in question and any Mogul-identified rings is also greater than 60 degrees, then that ring is considered an outlier. The outliers are highlighted in purple. The color gray indicates Mogul did not find sufficient equivalents in the CSD to analyse the geometry.





## 5.7 Other polymers [i](#)

There are no such residues in this entry.

## 5.8 Polymer linkage issues [i](#)

There are no chain breaks in this entry.

## 6 Fit of model and data ⓘ

### 6.1 Protein, DNA and RNA chains ⓘ

In the following table, the column labelled ‘#RSRZ> 2’ contains the number (and percentage) of RSRZ outliers, followed by percent RSRZ outliers for the chain as percentile scores relative to all X-ray entries and entries of similar resolution. The OWAB column contains the minimum, median, 95<sup>th</sup> percentile and maximum values of the occupancy-weighted average B-factor per residue. The column labelled ‘Q< 0.9’ lists the number of (and percentage) of residues with an average occupancy less than 0.9.

Mol	Chain	Analysed	<RSRZ>	#RSRZ>2	OWAB(Å <sup>2</sup> )	Q<0.9
1	A	342/352 (97%)	0.17	7 (2%) 65 69	30, 50, 65, 78	0
1	F	342/352 (97%)	0.18	7 (2%) 65 69	26, 43, 62, 78	0
2	B	18/18 (100%)	-0.14	0 100 100	40, 53, 68, 69	0
2	C	17/18 (94%)	-0.04	1 (5%) 22 27	43, 49, 55, 63	0
2	G	18/18 (100%)	0.06	1 (5%) 24 29	31, 48, 73, 77	0
2	H	14/18 (77%)	0.39	1 (7%) 16 20	33, 43, 79, 79	0
All	All	751/776 (96%)	0.17	17 (2%) 60 65	26, 47, 65, 79	0

All (17) RSRZ outliers are listed below:

Mol	Chain	Res	Type	RSRZ
2	C	857	DC	4.6
1	F	0	GLY	4.2
2	G	837	DT	3.7
1	F	116	HIS	3.4
1	A	341	PRO	3.3
1	F	1	SER	3.2
1	F	113	VAL	3.0
1	F	214	ARG	2.8
1	A	214	ARG	2.7
2	H	861	DG	2.6
1	A	0	GLY	2.4
1	F	167	ALA	2.2
1	A	112	SER	2.2
1	A	210	MET	2.2
1	F	210	MET	2.1
1	A	63	LEU	2.0
1	A	113	VAL	2.0

## 6.2 Non-standard residues in protein, DNA, RNA chains [i](#)

There are no non-standard protein/DNA/RNA residues in this entry.

## 6.3 Carbohydrates [i](#)

There are no carbohydrates in this entry.

## 6.4 Ligands [i](#)

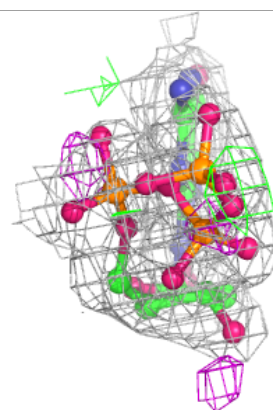
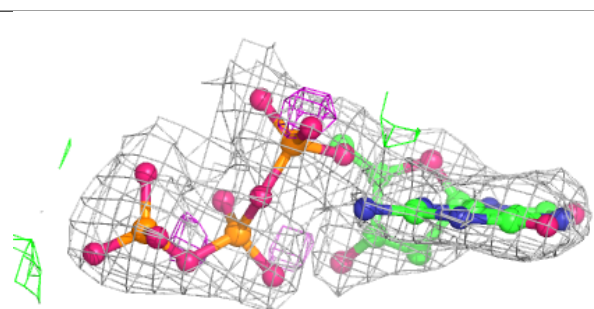
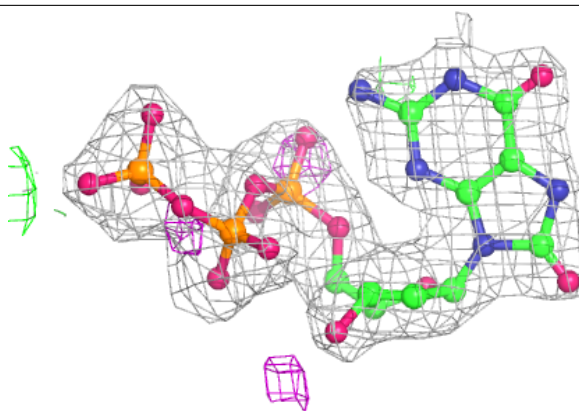
In the following table, the Atoms column lists the number of modelled atoms in the group and the number defined in the chemical component dictionary. The B-factors column lists the minimum, median, 95<sup>th</sup> percentile and maximum values of B factors of atoms in the group. The column labelled 'Q< 0.9' lists the number of atoms with occupancy less than 0.9.

Mol	Type	Chain	Res	Atoms	RSCC	RSR	B-factors( $\text{\AA}^2$ )	Q<0.9
3	8GT	A	401	32/33	0.95	0.12	48,54,63,63	0
4	MG	A	402	1/1	0.98	0.14	46,46,46,46	0

The following is a graphical depiction of the model fit to experimental electron density of all instances of the Ligand of Interest. In addition, ligands with molecular weight > 250 and outliers as shown on the geometry validation Tables will also be included. Each fit is shown from different orientation to approximate a three-dimensional view.

**Electron density around 8GT A 401:**

$2mF_o-DF_c$  (at 0.7 rmsd) in gray  
 $mF_o-DF_c$  (at 3 rmsd) in purple (negative)  
and green (positive)



## 6.5 Other polymers [i](#)

There are no such residues in this entry.