



Full wwPDB X-ray Structure Validation Report ⓘ

Oct 7, 2020 – 12:27 PM EDT

PDB ID : 3C6P
Title : Small molecule agonists and antagonists of F-box protein-substrate interactions in auxin perception and signaling
Authors : Tan, X.
Deposited on : 2008-02-04
Resolution : 2.70 Å(reported)

This is a Full wwPDB X-ray Structure Validation Report for a publicly released PDB entry.

We welcome your comments at validation@mail.wwpdb.org

A user guide is available at

<https://www.wwpdb.org/validation/2017/XrayValidationReportHelp>

with specific help available everywhere you see the ⓘ symbol.

The following versions of software and data (see [references ⓘ](#)) were used in the production of this report:

MolProbity	:	4.02b-467
Mogul	:	1.8.5 (274361), CSD as541be (2020)
Xtriage (Phenix)	:	1.13
EDS	:	2.14.6
buster-report	:	1.1.7 (2018)
Percentile statistics	:	20191225.v01 (using entries in the PDB archive December 25th 2019)
Refmac	:	5.8.0158
CCP4	:	7.0.044 (Gargrove)
Ideal geometry (proteins)	:	Engh & Huber (2001)
Ideal geometry (DNA, RNA)	:	Parkinson et al. (1996)
Validation Pipeline (wwPDB-VP)	:	2.14.6

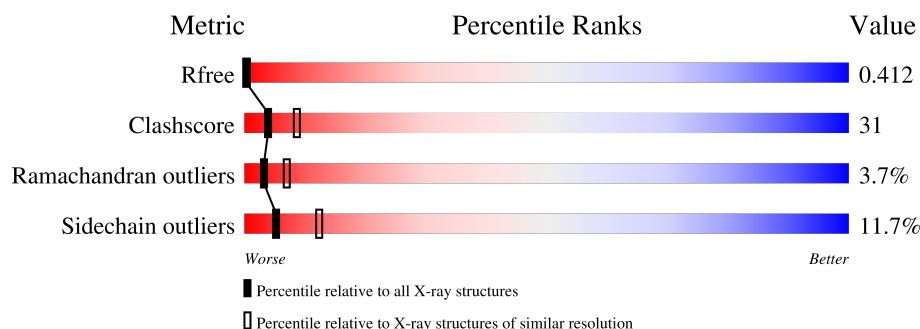
1 Overall quality at a glance

The following experimental techniques were used to determine the structure:

X-RAY DIFFRACTION

The reported resolution of this entry is 2.70 Å.

Percentile scores (ranging between 0-100) for global validation metrics of the entry are shown in the following graphic. The table shows the number of entries on which the scores are based.



Metric	Whole archive (#Entries)	Similar resolution (#Entries, resolution range(Å))
R_{free}	130704	2808 (2.70-2.70)
Clashscore	141614	3122 (2.70-2.70)
Ramachandran outliers	138981	3069 (2.70-2.70)
Sidechain outliers	138945	3069 (2.70-2.70)

The table below summarises the geometric issues observed across the polymeric chains and their fit to the electron density. The red, orange, yellow and green segments on the lower bar indicate the fraction of residues that contain outliers for ≥ 3 , 2, 1 and 0 types of geometric quality criteria respectively. A grey segment represents the fraction of residues that are not modelled. The numeric value for each fraction is indicated below the corresponding segment, with a dot representing fractions $\leq 5\%$

Mol	Chain	Length	Quality of chain
1	A	160	
2	B	594	

The following table lists non-polymeric compounds, carbohydrate monomers and non-standard residues in protein, DNA, RNA chains that are outliers for geometric or electron-density-fit criteria:

Mol	Type	Chain	Res	Chirality	Geometry	Clashes	Electron density
4	2S3	B	1001	-	-	X	-

2 Entry composition [i](#)

There are 5 unique types of molecules in this entry. The entry contains 5535 atoms, of which 0 are hydrogens and 0 are deuteriums.

In the tables below, the ZeroOcc column contains the number of atoms modelled with zero occupancy, the AltConf column contains the number of residues with at least one atom in alternate conformation and the Trace column contains the number of residues modelled with at most 2 atoms.

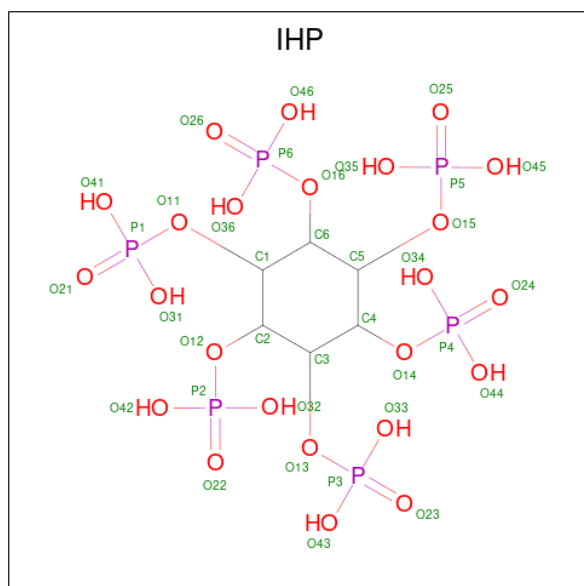
- Molecule 1 is a protein called SKP1-like protein 1A.

Mol	Chain	Residues	Atoms					ZeroOcc	AltConf	Trace
1	A	90	Total	C	N	O	S	0	0	0
			721	459	117	143	2			

- Molecule 2 is a protein called TRANSPORT INHIBITOR RESPONSE 1.

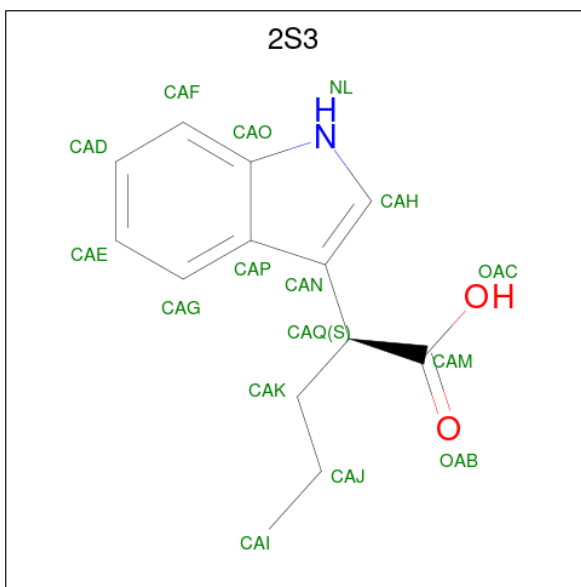
Mol	Chain	Residues	Atoms					ZeroOcc	AltConf	Trace
2	B	567	Total	C	N	O	S	0	0	0
			4461	2850	754	820	37			

- Molecule 3 is INOSITOL HEXAKISPHOSPHATE (three-letter code: IHP) (formula: $C_6H_{18}O_{24}P_6$).



Mol	Chain	Residues	Atoms				ZeroOcc	AltConf
3	B	1	Total	C	O	P	0	0
			36	6	24	6		

- Molecule 4 is (2S)-2-(1H-indol-3-yl)pentanoic acid (three-letter code: 2S3) (formula: $C_{13}H_{15}NO_2$).



Mol	Chain	Residues	Atoms				ZeroOcc	AltConf
4	B	1	Total	C	N	O	0	0
			16	13	1	2		

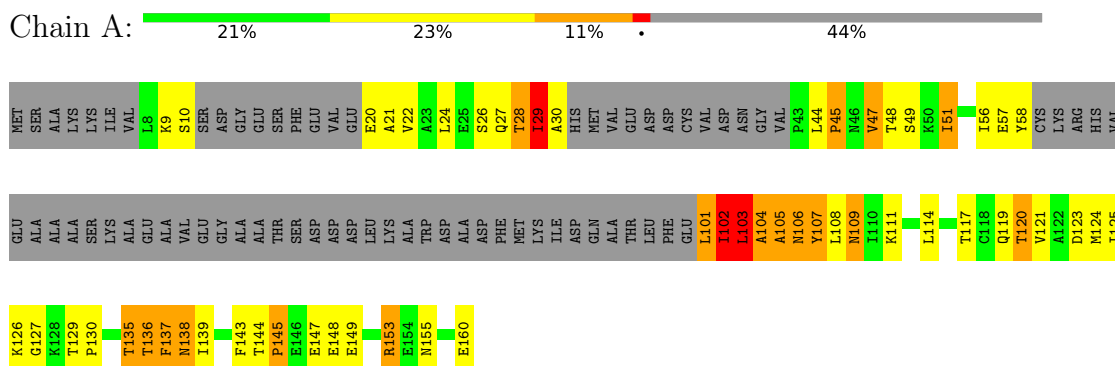
- Molecule 5 is water.

Mol	Chain	Residues	Atoms		ZeroOcc	AltConf
5	A	37	Total	O	0	0
			37	37		
5	B	264	Total	O	0	0
			264	264		

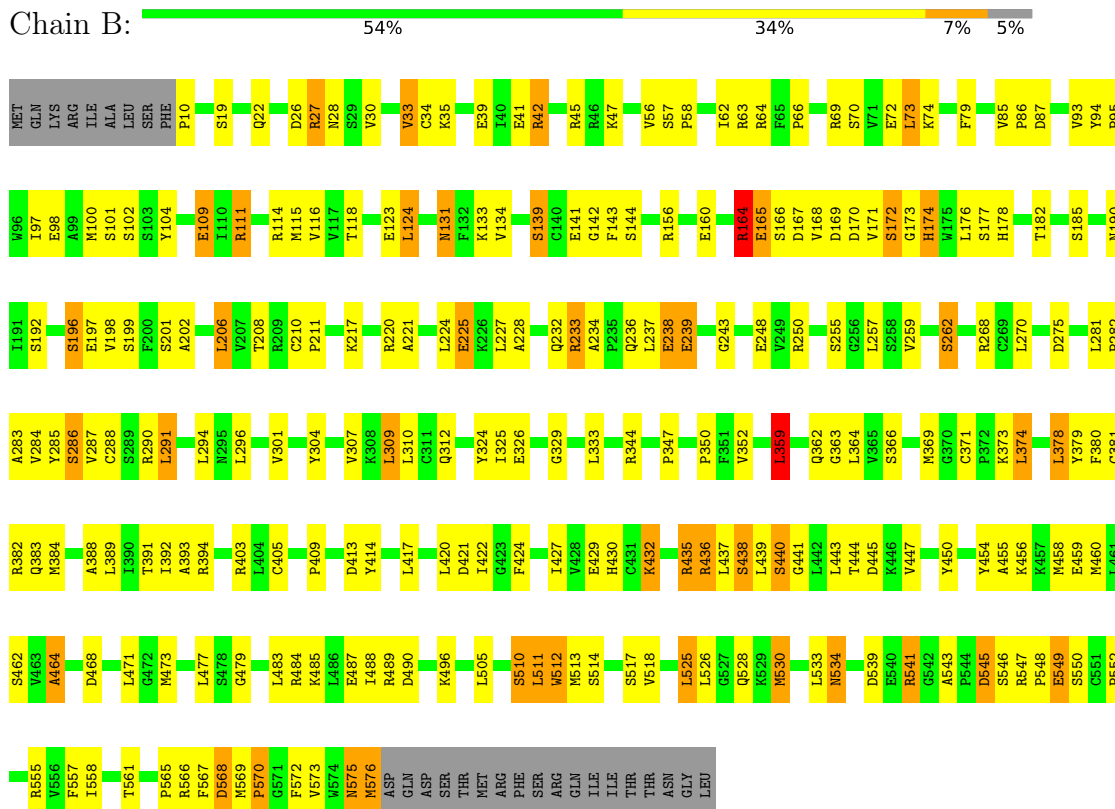
3 Residue-property plots

These plots are drawn for all protein, RNA, DNA and oligosaccharide chains in the entry. The first graphic for a chain summarises the proportions of the various outlier classes displayed in the second graphic. The second graphic shows the sequence view annotated by issues in geometry. Residues are color-coded according to the number of geometric quality criteria for which they contain at least one outlier: green = 0, yellow = 1, orange = 2 and red = 3 or more. Stretches of 2 or more consecutive residues without any outlier are shown as a green connector. Residues present in the sample, but not in the model, are shown in grey.

- Molecule 1: SKP1-like protein 1A



- Molecule 2: TRANSPORT INHIBITOR RESPONSE 1



4 Data and refinement statistics

Property	Value	Source
Space group	C 1 2 1	Depositor
Cell constants a, b, c, α , β , γ	102.79Å 80.39Å 125.21Å 90.00° 104.72° 90.00°	Depositor
Resolution (Å)	49.71 – 2.70 49.71 – 2.70	Depositor EDS
% Data completeness (in resolution range)	47.8 (49.71-2.70) 95.5 (49.71-2.70)	Depositor EDS
R_{merge}	(Not available)	Depositor
R_{sym}	(Not available)	Depositor
$\langle I/\sigma(I) \rangle$ ¹	3.22 (at 2.69Å)	Xtriage
Refinement program	REFMAC 5.2.0005	Depositor
R, R_{free}	0.180 , 0.261 0.385 , 0.412	Depositor DCC
R_{free} test set	1324 reflections (5.08%)	wwPDB-VP
Wilson B-factor (Å ²)	61.0	Xtriage
Anisotropy	0.341	Xtriage
Bulk solvent k_{sol} (e/Å ³), B_{sol} (Å ²)	0.31 , 48.2	EDS
L-test for twinning ²	$\langle L \rangle = 0.50$, $\langle L^2 \rangle = 0.34$	Xtriage
Estimated twinning fraction	No twinning to report.	Xtriage
F_o, F_c correlation	0.75	EDS
Total number of atoms	5535	wwPDB-VP
Average B, all atoms (Å ²)	46.0	wwPDB-VP

Xtriage's analysis on translational NCS is as follows: *The largest off-origin peak in the Patterson function is 5.48% of the height of the origin peak. No significant pseudotranslation is detected.*

¹Intensities estimated from amplitudes.

²Theoretical values of $\langle |L| \rangle$, $\langle L^2 \rangle$ for acentric reflections are 0.5, 0.333 respectively for untwinned datasets, and 0.375, 0.2 for perfectly twinned datasets.

5 Model quality

5.1 Standard geometry

Bond lengths and bond angles in the following residue types are not validated in this section: IHP, 2S3

The Z score for a bond length (or angle) is the number of standard deviations the observed value is removed from the expected value. A bond length (or angle) with $|Z| > 5$ is considered an outlier worth inspection. RMSZ is the root-mean-square of all Z scores of the bond lengths (or angles).

Mol	Chain	Bond lengths		Bond angles	
		RMSZ	$\# Z > 5$	RMSZ	$\# Z > 5$
1	A	0.75	0/728	0.77	0/982
2	B	1.30	16/4558 (0.4%)	1.20	30/6178 (0.5%)
All	All	1.24	16/5286 (0.3%)	1.15	30/7160 (0.4%)

Chiral center outliers are detected by calculating the chiral volume of a chiral center and verifying if the center is modelled as a planar moiety or with the opposite hand. A planarity outlier is detected by checking planarity of atoms in a peptide group, atoms in a mainchain group or atoms of a sidechain that are expected to be planar.

Mol	Chain	#Chirality outliers	#Planarity outliers
1	A	0	3

All (16) bond length outliers are listed below:

Mol	Chain	Res	Type	Atoms	Z	Observed(Å)	Ideal(Å)
2	B	512	TRP	CZ2-CH2	32.95	2.00	1.37
2	B	512	TRP	CD1-NE1	15.46	1.64	1.38
2	B	512	TRP	CG-CD2	13.82	1.67	1.43
2	B	512	TRP	CG-CD1	-10.62	1.21	1.36
2	B	512	TRP	CD2-CE2	8.32	1.51	1.41
2	B	512	TRP	CA-C	7.43	1.72	1.52
2	B	225	GLU	CG-CD	7.36	1.62	1.51
2	B	239	GLU	CB-CG	7.26	1.66	1.52
2	B	512	TRP	CD2-CE3	7.10	1.50	1.40
2	B	239	GLU	CD-OE2	7.08	1.33	1.25
2	B	512	TRP	CA-CB	6.86	1.69	1.53
2	B	511	LEU	C-O	6.68	1.36	1.23
2	B	512	TRP	CZ3-CH2	6.65	1.50	1.40
2	B	464	ALA	CA-CB	-6.07	1.39	1.52
2	B	512	TRP	C-O	5.60	1.33	1.23
2	B	239	GLU	CG-CD	5.49	1.60	1.51

All (30) bond angle outliers are listed below:

Mol	Chain	Res	Type	Atoms	Z	Observed(°)	Ideal(°)
2	B	512	TRP	CG-CD2-CE3	-20.39	115.55	133.90
2	B	512	TRP	NE1-CE2-CD2	-11.36	95.94	107.30
2	B	512	TRP	CE2-CD2-CG	10.30	115.54	107.30
2	B	512	TRP	CA-CB-CG	-9.63	95.40	113.70
2	B	512	TRP	CH2-CZ2-CE2	-9.40	108.00	117.40
2	B	512	TRP	CE2-CD2-CE3	8.50	128.90	118.70
2	B	512	TRP	CD1-NE1-CE2	8.30	116.47	109.00
2	B	512	TRP	CB-CA-C	8.18	126.76	110.40
2	B	512	TRP	CD1-CG-CD2	-7.90	99.98	106.30
2	B	512	TRP	N-CA-C	-7.89	89.69	111.00
2	B	526	LEU	CB-CG-CD2	-7.35	98.51	111.00
2	B	421	ASP	CB-CG-OD1	6.86	124.47	118.30
2	B	511	LEU	CA-C-O	-6.81	105.81	120.10
2	B	436	ARG	NE-CZ-NH2	6.67	123.63	120.30
2	B	512	TRP	NE1-CE2-CZ2	6.54	137.59	130.40
2	B	513	MET	N-CA-C	-6.40	93.71	111.00
2	B	359	LEU	CA-CB-CG	-6.16	101.14	115.30
2	B	525	LEU	CA-CB-CG	6.09	129.30	115.30
2	B	420	LEU	CB-CG-CD1	-6.07	100.67	111.00
2	B	220	ARG	NE-CZ-NH1	-5.93	117.33	120.30
2	B	435	ARG	NE-CZ-NH2	-5.56	117.52	120.30
2	B	511	LEU	N-CA-CB	-5.50	99.40	110.40
2	B	250	ARG	NE-CZ-NH1	5.44	123.02	120.30
2	B	73	LEU	CA-CB-CG	5.42	127.76	115.30
2	B	243	GLY	N-CA-C	-5.27	99.92	113.10
2	B	510	SER	CA-C-O	-5.10	109.39	120.10
2	B	533	LEU	CB-CG-CD1	-5.09	102.34	111.00
2	B	233	ARG	NE-CZ-NH1	5.08	122.84	120.30
2	B	479	GLY	N-CA-C	5.05	125.71	113.10
2	B	568	ASP	CB-CG-OD2	5.03	122.82	118.30

There are no chirality outliers.

All (3) planarity outliers are listed below:

Mol	Chain	Res	Type	Group
1	A	103	LEU	Peptide
1	A	104	ALA	Peptide
1	A	28	THR	Peptide

5.2 Too-close contacts ⓘ

In the following table, the Non-H and H(model) columns list the number of non-hydrogen atoms and hydrogen atoms in the chain respectively. The H(added) column lists the number of hydrogen atoms added and optimized by MolProbity. The Clashes column lists the number of clashes within the asymmetric unit, whereas Symm-Clashes lists symmetry related clashes.

Mol	Chain	Non-H	H(model)	H(added)	Clashes	Symm-Clashes
1	A	721	0	731	118	0
2	B	4461	0	4504	200	6
3	B	36	0	5	6	0
4	B	16	0	14	8	0
5	A	37	0	0	11	2
5	B	264	0	0	58	3
All	All	5535	0	5254	321	7

The all-atom clashscore is defined as the number of clashes found per 1000 atoms (including hydrogen atoms). The all-atom clashscore for this structure is 31.

All (321) close contacts within the same asymmetric unit are listed below, sorted by their clash magnitude.

Atom-1	Atom-2	Interatomic distance (Å)	Clash overlap (Å)
1:A:101:LEU:HD13	1:A:102:ILE:CD1	1.41	1.49
2:B:512:TRP:CZ2	2:B:512:TRP:CH2	1.99	1.48
1:A:29:ILE:CG2	1:A:30:ALA:H	1.18	1.46
1:A:101:LEU:HD22	1:A:102:ILE:N	1.48	1.28
1:A:29:ILE:CG2	1:A:30:ALA:N	1.86	1.22
2:B:576:MET:O	5:B:1006:HOH:O	1.56	1.19
1:A:102:ILE:HD13	1:A:102:ILE:N	1.54	1.17
2:B:569:MET:HE1	5:B:1088:HOH:O	1.40	1.16
1:A:102:ILE:CD1	1:A:102:ILE:H	1.56	1.15
4:B:1001:2S3:CAI	4:B:1001:2S3:HAH	1.79	1.12
1:A:106:ASN:O	1:A:108:LEU:N	1.83	1.12
4:B:1001:2S3:CAH	4:B:1001:2S3:HAIA	1.84	1.08
1:A:101:LEU:HD13	1:A:102:ILE:HD12	1.15	1.07
1:A:101:LEU:CD1	1:A:102:ILE:CD1	2.30	1.07
1:A:29:ILE:HG23	1:A:30:ALA:N	1.64	1.06
2:B:66:PRO:HB3	5:B:1047:HOH:O	1.57	1.03
1:A:29:ILE:HG22	1:A:30:ALA:N	1.52	1.03
2:B:10:PRO:HB2	5:B:1091:HOH:O	1.57	1.02
2:B:109:GLU:HB3	2:B:134:VAL:HB	1.43	1.01
1:A:26:SER:O	1:A:29:ILE:CG2	2.12	0.97
1:A:101:LEU:N	1:A:103:LEU:HG	1.82	0.95

Continued on next page...

Continued from previous page...

Atom-1	Atom-2	Interatomic distance (Å)	Clash overlap (Å)
2:B:287:VAL:HA	5:B:1256:HOH:O	1.66	0.95
1:A:101:LEU:N	1:A:103:LEU:HD21	1.80	0.95
1:A:101:LEU:N	1:A:103:LEU:CG	2.30	0.94
1:A:101:LEU:CD2	1:A:102:ILE:N	2.30	0.94
1:A:101:LEU:N	1:A:103:LEU:CD2	2.30	0.94
1:A:101:LEU:HD13	1:A:102:ILE:HD13	1.49	0.94
4:B:1001:2S3:HAH	4:B:1001:2S3:HAIA	0.94	0.93
1:A:26:SER:O	1:A:29:ILE:HG22	1.66	0.92
1:A:103:LEU:HD23	1:A:103:LEU:H	1.32	0.91
1:A:28:THR:HG21	1:A:107:TYR:O	1.71	0.91
2:B:432:LYS:HZ3	2:B:432:LYS:HB2	1.37	0.89
1:A:102:ILE:HD13	1:A:102:ILE:H	0.74	0.88
1:A:160:GLU:HG3	2:B:28:ASN:ND2	1.88	0.88
2:B:22:GLN:O	2:B:47:LYS:NZ	2.07	0.88
1:A:101:LEU:O	1:A:104:ALA:HB3	1.73	0.87
1:A:130:PRO:HD2	5:A:191:HOH:O	1.72	0.86
1:A:28:THR:OG1	1:A:108:LEU:HA	1.75	0.86
2:B:576:MET:O	5:B:1237:HOH:O	1.93	0.86
1:A:29:ILE:HG22	1:A:30:ALA:H	0.69	0.85
1:A:101:LEU:CD2	1:A:101:LEU:C	2.46	0.84
2:B:362:GLN:HB2	5:B:1218:HOH:O	1.79	0.83
1:A:101:LEU:HB3	1:A:102:ILE:HD13	1.59	0.83
2:B:73:LEU:HB3	2:B:115:MET:HE1	1.62	0.82
2:B:309:LEU:HD23	2:B:309:LEU:O	1.80	0.82
2:B:432:LYS:NZ	2:B:432:LYS:HB2	1.93	0.82
1:A:101:LEU:C	1:A:101:LEU:HD22	2.01	0.81
1:A:101:LEU:CB	1:A:102:ILE:HD13	2.10	0.81
1:A:101:LEU:HD22	1:A:102:ILE:H	1.41	0.80
4:B:1001:2S3:CAH	4:B:1001:2S3:CAI	2.52	0.80
2:B:111:ARG:HH11	2:B:111:ARG:HG2	1.47	0.79
1:A:101:LEU:O	1:A:104:ALA:CB	2.30	0.79
1:A:56:ILE:C	1:A:58:TYR:H	1.89	0.77
2:B:144:SER:HB3	2:B:169:ASP:HB3	1.65	0.76
2:B:389:LEU:HG	5:B:1264:HOH:O	1.85	0.76
4:B:1001:2S3:CAJ	4:B:1001:2S3:CAH	2.62	0.76
1:A:101:LEU:HB3	1:A:102:ILE:CD1	2.15	0.75
2:B:352:VAL:O	2:B:382:ARG:NH2	2.18	0.75
2:B:63:ARG:HB3	5:B:1071:HOH:O	1.84	0.75
1:A:101:LEU:HD13	1:A:102:ILE:HD11	1.63	0.75
2:B:255:SER:O	2:B:259:VAL:HG23	1.85	0.75
2:B:384:MET:SD	5:B:1264:HOH:O	2.46	0.74

Continued on next page...

Continued from previous page...

Atom-1	Atom-2	Interatomic distance (Å)	Clash overlap (Å)
2:B:281:LEU:O	2:B:284:VAL:HG22	1.88	0.74
1:A:101:LEU:CG	1:A:102:ILE:HD13	2.19	0.73
2:B:233:ARG:HD2	5:B:1111:HOH:O	1.86	0.73
2:B:288:CYS:HB3	2:B:312:GLN:HB2	1.70	0.73
2:B:394:ARG:HD2	5:B:1152:HOH:O	1.88	0.72
1:A:160:GLU:HG3	2:B:28:ASN:HD22	1.53	0.72
2:B:73:LEU:HB3	2:B:115:MET:CE	2.20	0.72
1:A:106:ASN:O	1:A:107:TYR:C	2.29	0.71
2:B:10:PRO:HD2	5:B:1089:HOH:O	1.88	0.71
2:B:284:VAL:O	2:B:287:VAL:HB	1.90	0.71
1:A:28:THR:O	1:A:29:ILE:HD13	1.91	0.70
2:B:459:GLU:OE1	2:B:484:ARG:NH1	2.24	0.70
2:B:545:ASP:HB3	5:B:1192:HOH:O	1.90	0.70
1:A:101:LEU:CD1	1:A:102:ILE:HD13	2.12	0.70
1:A:104:ALA:O	1:A:106:ASN:C	2.30	0.69
1:A:27:GLN:O	1:A:27:GLN:HG3	1.93	0.69
2:B:566:ARG:NH1	2:B:568:ASP:OD1	2.26	0.68
2:B:111:ARG:HH11	2:B:111:ARG:CG	2.07	0.68
1:A:104:ALA:C	1:A:106:ASN:N	2.47	0.68
2:B:409:PRO:HA	5:B:1029:HOH:O	1.92	0.68
1:A:10:SER:HA	5:A:167:HOH:O	1.94	0.67
2:B:72:GLU:HB2	5:B:1151:HOH:O	1.92	0.67
2:B:178:HIS:NE2	5:B:1014:HOH:O	1.67	0.67
1:A:102:ILE:HG23	1:A:117:THR:OG1	1.95	0.67
2:B:174:HIS:O	2:B:178:HIS:HD2	1.76	0.67
2:B:325:ILE:HG13	2:B:329:GLY:HA3	1.76	0.67
2:B:389:LEU:N	5:B:1264:HOH:O	2.25	0.67
2:B:39:GLU:OE2	2:B:42:ARG:NH1	2.28	0.67
1:A:102:ILE:C	1:A:104:ALA:H	1.97	0.66
2:B:94:TYR:HB3	2:B:95:PRO:HD3	1.78	0.66
2:B:185:SER:O	5:B:1031:HOH:O	2.13	0.66
2:B:287:VAL:CG1	2:B:291:LEU:HD13	2.26	0.65
1:A:101:LEU:O	1:A:103:LEU:N	2.30	0.65
1:A:108:LEU:O	1:A:109:ASN:HB2	1.95	0.65
1:A:56:ILE:O	1:A:58:TYR:N	2.30	0.65
1:A:101:LEU:O	1:A:104:ALA:N	2.30	0.65
2:B:539:ASP:OD2	2:B:541:ARG:HD2	1.97	0.65
2:B:286:SER:HB3	5:B:1223:HOH:O	1.98	0.65
2:B:534:ASN:HD21	2:B:565:PRO:HA	1.62	0.64
1:A:104:ALA:O	1:A:106:ASN:N	2.30	0.64
1:A:102:ILE:O	1:A:104:ALA:N	2.30	0.64

Continued on next page...

Continued from previous page...

Atom-1	Atom-2	Interatomic distance (Å)	Clash overlap (Å)
2:B:378:LEU:HD11	2:B:380:PHE:CE1	2.31	0.64
2:B:232:GLN:HG3	5:B:1079:HOH:O	1.96	0.64
2:B:285:TYR:HA	2:B:288:CYS:SG	2.37	0.64
2:B:422:ILE:HG12	5:B:1080:HOH:O	1.97	0.63
1:A:144:THR:OG1	1:A:147:GLU:HG3	1.98	0.63
2:B:393:ALA:HB2	2:B:427:ILE:HD13	1.81	0.63
2:B:505:LEU:HD13	2:B:558:ILE:HG21	1.81	0.63
4:B:1001:2S3:CAH	4:B:1001:2S3:HAJA	2.29	0.63
2:B:281:LEU:HD11	2:B:301:VAL:HG21	1.80	0.62
1:A:129:THR:HB	5:A:191:HOH:O	1.99	0.62
1:A:28:THR:O	1:A:29:ILE:CD1	2.47	0.62
2:B:484:ARG:HG2	5:B:1099:HOH:O	1.99	0.62
1:A:48:THR:HG22	1:A:51:ILE:HD13	1.80	0.62
1:A:101:LEU:O	1:A:102:ILE:C	2.36	0.61
1:A:106:ASN:C	1:A:108:LEU:N	2.54	0.61
2:B:70:SER:OG	2:B:109:GLU:HG3	2.00	0.61
2:B:27:ARG:HB3	2:B:45:ARG:NH2	2.15	0.61
2:B:403:ARG:HG2	2:B:438:SER:HB3	1.81	0.61
1:A:101:LEU:C	1:A:103:LEU:N	2.50	0.60
1:A:135:THR:HG22	1:A:136:THR:N	2.17	0.60
2:B:512:TRP:NE1	2:B:514:SER:HB3	2.15	0.60
2:B:447:VAL:O	2:B:450:TYR:HB2	2.02	0.60
2:B:359:LEU:HD21	2:B:379:TYR:CZ	2.37	0.60
2:B:176:LEU:HD21	2:B:206:LEU:HD12	1.83	0.59
1:A:102:ILE:HG23	1:A:117:THR:CB	2.33	0.58
1:A:120:THR:O	1:A:123:ASP:HB2	2.04	0.58
2:B:414:TYR:HB2	5:B:1201:HOH:O	2.02	0.58
2:B:281:LEU:HB2	2:B:282:PRO:HD3	1.84	0.58
1:A:26:SER:O	1:A:29:ILE:HG21	2.01	0.58
1:A:102:ILE:C	1:A:104:ALA:N	2.57	0.58
1:A:27:GLN:HB3	1:A:109:ASN:HD22	1.69	0.58
2:B:378:LEU:HD11	2:B:380:PHE:HE1	1.66	0.57
2:B:64:ARG:NH2	5:B:1133:HOH:O	2.27	0.57
2:B:512:TRP:HE1	2:B:514:SER:CB	2.17	0.57
1:A:107:TYR:CD2	1:A:108:LEU:HD23	2.40	0.57
2:B:42:ARG:HB2	2:B:64:ARG:O	2.05	0.57
2:B:63:ARG:HG3	5:B:1085:HOH:O	2.05	0.57
2:B:66:PRO:HA	5:B:1047:HOH:O	2.05	0.57
1:A:48:THR:HG22	1:A:51:ILE:CD1	2.35	0.56
1:A:56:ILE:C	1:A:58:TYR:N	2.57	0.56
1:A:144:THR:HB	5:A:175:HOH:O	2.04	0.56

Continued on next page...

Continued from previous page...

Atom-1	Atom-2	Interatomic distance (Å)	Clash overlap (Å)
2:B:485:LYS:NZ	3:B:1000:IHP:O31	2.37	0.56
2:B:160:GLU:CG	5:B:1105:HOH:O	2.53	0.56
2:B:324:TYR:O	2:B:326:GLU:HG3	2.04	0.56
2:B:171:VAL:O	2:B:172:SER:HB3	2.06	0.56
2:B:131:ASN:O	2:B:133:LYS:HG3	2.06	0.56
2:B:539:ASP:O	2:B:572:PHE:HB2	2.06	0.55
2:B:100:MET:HG2	2:B:104:TYR:CD1	2.41	0.55
2:B:445:ASP:OD1	2:B:468:ASP:HB2	2.07	0.55
2:B:10:PRO:HD3	5:B:1247:HOH:O	2.07	0.54
2:B:94:TYR:CE1	2:B:124:LEU:HD12	2.42	0.54
2:B:66:PRO:CA	5:B:1047:HOH:O	2.54	0.54
1:A:106:ASN:C	1:A:108:LEU:H	2.10	0.54
2:B:378:LEU:HD12	2:B:378:LEU:C	2.27	0.54
1:A:29:ILE:O	1:A:30:ALA:O	2.26	0.54
2:B:262:SER:HB3	2:B:286:SER:HB3	1.87	0.54
1:A:160:GLU:C	5:A:169:HOH:O	2.46	0.54
2:B:512:TRP:HE1	2:B:514:SER:HB3	1.70	0.54
2:B:94:TYR:CE2	2:B:98:GLU:HG3	2.43	0.54
2:B:174:HIS:O	2:B:178:HIS:CD2	2.60	0.54
2:B:234:ALA:HB1	2:B:237:LEU:HD13	1.90	0.54
2:B:93:VAL:HG12	2:B:116:VAL:O	2.07	0.54
1:A:101:LEU:CD2	1:A:102:ILE:H	2.11	0.53
2:B:454:TYR:O	2:B:456:LYS:N	2.42	0.53
2:B:144:SER:CB	2:B:169:ASP:HB3	2.38	0.53
2:B:86:PRO:HG3	5:B:1251:HOH:O	2.07	0.53
1:A:153:ARG:HD2	5:A:194:HOH:O	2.08	0.53
2:B:239:GLU:HB3	5:B:1018:HOH:O	2.09	0.53
2:B:287:VAL:HG12	2:B:291:LEU:HD13	1.91	0.52
2:B:19:SER:O	2:B:22:GLN:NE2	2.42	0.52
2:B:62:ILE:HD13	5:B:1027:HOH:O	2.09	0.52
1:A:103:LEU:H	1:A:103:LEU:CD2	2.04	0.51
2:B:288:CYS:CB	2:B:312:GLN:HB2	2.39	0.51
2:B:288:CYS:HA	2:B:291:LEU:HD22	1.92	0.51
2:B:236:GLN:OE1	2:B:236:GLN:N	2.37	0.51
1:A:101:LEU:C	1:A:101:LEU:HD23	2.28	0.51
2:B:484:ARG:NH2	3:B:1000:IHP:O31	2.42	0.51
2:B:282:PRO:HA	2:B:285:TYR:CZ	2.46	0.51
2:B:441:GLY:O	2:B:443:LEU:HG	2.10	0.51
2:B:97:ILE:O	2:B:101:SER:HB3	2.10	0.51
1:A:106:ASN:O	1:A:109:ASN:N	2.44	0.51
3:B:1000:IHP:O44	3:B:1000:IHP:O33	2.29	0.51

Continued on next page...

Continued from previous page...

Atom-1	Atom-2	Interatomic distance (Å)	Clash overlap (Å)
2:B:160:GLU:HG3	5:B:1105:HOH:O	2.09	0.51
2:B:405:CYS:HB2	4:B:1001:2S3:HAI	1.93	0.51
2:B:190:ASN:HA	2:B:217:LYS:HB2	1.93	0.50
2:B:63:ARG:NE	5:B:1109:HOH:O	2.44	0.50
1:A:102:ILE:CG2	1:A:117:THR:OG1	2.60	0.50
1:A:126:LYS:HB3	5:A:164:HOH:O	2.11	0.50
2:B:347:PRO:HG2	2:B:350:PRO:HG3	1.93	0.50
1:A:48:THR:CG2	1:A:51:ILE:CD1	2.90	0.50
2:B:62:ILE:HG22	5:B:1216:HOH:O	2.12	0.49
2:B:388:ALA:HB3	5:B:1264:HOH:O	2.12	0.49
2:B:66:PRO:CB	5:B:1047:HOH:O	2.32	0.49
1:A:27:GLN:O	1:A:27:GLN:CG	2.60	0.49
2:B:569:MET:O	2:B:570:PRO:O	2.30	0.49
2:B:224:LEU:HD11	2:B:257:LEU:HD11	1.95	0.49
2:B:287:VAL:CG1	2:B:291:LEU:CD1	2.90	0.49
2:B:309:LEU:HD23	2:B:309:LEU:C	2.29	0.49
3:B:1000:IHP:O23	5:B:1044:HOH:O	2.19	0.49
1:A:20:GLU:O	1:A:20:GLU:HG2	2.12	0.49
2:B:413:ASP:OD1	2:B:413:ASP:C	2.50	0.49
2:B:569:MET:CE	2:B:575:ASN:HB2	2.42	0.49
2:B:464:ALA:HB2	4:B:1001:2S3:HAD	1.95	0.49
2:B:164:ARG:O	2:B:166:SER:N	2.46	0.49
2:B:530:MET:HE2	5:B:1052:HOH:O	2.13	0.49
2:B:569:MET:SD	2:B:573:VAL:HG12	2.53	0.49
1:A:104:ALA:O	1:A:105:ALA:C	2.51	0.48
1:A:160:GLU:HG3	2:B:28:ASN:HD21	1.75	0.48
2:B:304:TYR:O	2:B:307:VAL:HB	2.13	0.48
2:B:359:LEU:HD21	2:B:379:TYR:OH	2.13	0.48
2:B:517:SER:C	5:B:1115:HOH:O	2.51	0.48
2:B:570:PRO:HG2	2:B:573:VAL:CG2	2.44	0.48
2:B:118:THR:HA	2:B:142:GLY:O	2.14	0.48
2:B:290:ARG:NH2	5:B:1256:HOH:O	2.46	0.48
2:B:569:MET:C	2:B:570:PRO:O	2.50	0.48
2:B:114:ARG:HA	2:B:139:SER:O	2.14	0.47
2:B:436:ARG:HD2	2:B:460:MET:HE3	1.96	0.47
2:B:487:GLU:C	2:B:488:ILE:HG13	2.34	0.47
2:B:383:GLN:HG2	5:B:1053:HOH:O	2.14	0.47
1:A:101:LEU:CD1	1:A:102:ILE:HD11	2.32	0.47
1:A:103:LEU:HD23	1:A:103:LEU:N	2.15	0.47
2:B:325:ILE:O	2:B:329:GLY:HA3	2.13	0.47
2:B:512:TRP:CZ2	2:B:555:ARG:HD3	2.49	0.47

Continued on next page...

Continued from previous page...

Atom-1	Atom-2	Interatomic distance (Å)	Clash overlap (Å)
2:B:569:MET:CE	5:B:1088:HOH:O	2.22	0.47
1:A:137:PHE:HB3	1:A:138:ASN:H	1.49	0.47
2:B:312:GLN:NE2	5:B:1095:HOH:O	2.48	0.47
2:B:460:MET:CE	5:B:1016:HOH:O	2.62	0.47
1:A:101:LEU:HD22	1:A:102:ILE:HD13	1.97	0.47
1:A:107:TYR:CD2	1:A:108:LEU:CD2	2.98	0.47
2:B:257:LEU:HA	2:B:257:LEU:HD23	1.81	0.47
2:B:294:LEU:HD21	2:B:296:LEU:HD11	1.97	0.46
2:B:79:PHE:CE2	2:B:489:ARG:HD3	2.50	0.46
2:B:510:SER:HB2	2:B:557:PHE:CE1	2.51	0.46
1:A:121:VAL:C	1:A:123:ASP:N	2.69	0.46
2:B:310:LEU:HD13	2:B:333:LEU:HD13	1.97	0.46
2:B:429:GLU:HB2	5:B:1259:HOH:O	2.15	0.46
2:B:518:VAL:O	2:B:552:PRO:HA	2.16	0.46
1:A:101:LEU:CD1	1:A:102:ILE:HD12	2.10	0.46
2:B:19:SER:HB3	5:B:1030:HOH:O	2.15	0.46
2:B:74:LYS:NZ	3:B:1000:IHP:H1	2.31	0.46
2:B:143:PHE:CE1	2:B:168:VAL:HG22	2.50	0.46
2:B:170:ASP:OD1	2:B:196:SER:HB3	2.15	0.46
1:A:160:GLU:CG	2:B:28:ASN:HD22	2.27	0.46
2:B:57:SER:O	2:B:58:PRO:C	2.55	0.45
2:B:543:ALA:O	2:B:546:SER:OG	2.28	0.45
2:B:202:ALA:O	2:B:206:LEU:HB2	2.17	0.45
2:B:545:ASP:C	2:B:547:ARG:H	2.18	0.45
2:B:570:PRO:HG2	2:B:573:VAL:HG23	1.97	0.45
2:B:569:MET:HE3	2:B:575:ASN:HB2	1.98	0.45
1:A:101:LEU:HD22	1:A:102:ILE:CA	2.40	0.45
2:B:238:GLU:C	2:B:239:GLU:HG3	2.36	0.45
1:A:137:PHE:O	1:A:138:ASN:HB2	2.16	0.45
2:B:33:VAL:O	2:B:34:CYS:HB3	2.16	0.45
2:B:437:LEU:HG	2:B:438:SER:N	2.32	0.45
1:A:138:ASN:ND2	1:A:138:ASN:O	2.50	0.45
1:A:119:GLN:O	1:A:123:ASP:OD2	2.34	0.45
1:A:125:ILE:O	1:A:126:LYS:C	2.53	0.45
2:B:262:SER:HB3	2:B:286:SER:CB	2.46	0.45
2:B:548:PRO:O	2:B:550:SER:N	2.49	0.45
1:A:107:TYR:HD2	1:A:108:LEU:CD2	2.30	0.44
1:A:101:LEU:CD2	1:A:102:ILE:HD13	2.47	0.44
2:B:228:ALA:HB3	5:B:1005:HOH:O	2.17	0.44
1:A:44:LEU:HD13	1:A:47:VAL:HG21	1.99	0.44
1:A:149:GLU:CB	5:A:189:HOH:O	2.64	0.44

Continued on next page...

Continued from previous page...

Atom-1	Atom-2	Interatomic distance (Å)	Clash overlap (Å)
1:A:49:SER:HA	5:A:173:HOH:O	2.18	0.44
1:A:121:VAL:C	1:A:123:ASP:H	2.20	0.44
1:A:149:GLU:HB3	5:A:162:HOH:O	2.17	0.44
1:A:102:ILE:HA	1:A:105:ALA:HB3	2.00	0.43
1:A:155:ASN:OD1	2:B:64:ARG:NH2	2.36	0.43
2:B:109:GLU:CB	2:B:134:VAL:HB	2.31	0.43
2:B:210:CYS:HA	2:B:211:PRO:HD2	1.85	0.43
2:B:63:ARG:HD2	5:B:1209:HOH:O	2.17	0.43
2:B:197:GLU:HG3	2:B:221:ALA:HB1	2.00	0.43
2:B:363:GLY:O	2:B:366:SER:HB2	2.19	0.43
2:B:10:PRO:C	5:B:1091:HOH:O	2.56	0.43
2:B:94:TYR:HE2	2:B:98:GLU:OE1	2.01	0.43
2:B:382:ARG:HG3	2:B:382:ARG:HH11	1.83	0.43
1:A:28:THR:HG23	1:A:108:LEU:O	2.18	0.43
2:B:525:LEU:O	2:B:528:GLN:HB2	2.19	0.43
2:B:208:THR:HG23	5:B:1235:HOH:O	2.19	0.43
2:B:239:GLU:CB	5:B:1018:HOH:O	2.67	0.43
2:B:545:ASP:C	2:B:547:ARG:N	2.72	0.43
2:B:424:PHE:CD2	2:B:439:LEU:HD23	2.54	0.42
1:A:149:GLU:HB2	5:A:189:HOH:O	2.19	0.42
1:A:48:THR:CG2	1:A:51:ILE:HD12	2.48	0.42
2:B:489:ARG:HD2	5:B:1048:HOH:O	2.19	0.42
2:B:30:VAL:HG23	2:B:41:GLU:HG3	2.02	0.42
2:B:382:ARG:HG3	2:B:382:ARG:NH1	2.34	0.42
2:B:104:TYR:HA	5:B:1090:HOH:O	2.19	0.42
2:B:435:ARG:HA	2:B:458:MET:HA	2.02	0.42
2:B:285:TYR:N	5:B:1239:HOH:O	2.52	0.42
1:A:143:PHE:HB3	1:A:148:GLU:HB2	2.02	0.42
2:B:344:ARG:HG2	2:B:378:LEU:HB3	2.01	0.42
1:A:20:GLU:OE1	1:A:24:LEU:HD11	2.18	0.42
2:B:374:LEU:HA	2:B:374:LEU:HD23	1.93	0.42
2:B:444:THR:HB	2:B:468:ASP:OD2	2.20	0.42
2:B:56:VAL:HG22	2:B:57:SER:N	2.35	0.42
2:B:62:ILE:HG21	5:B:1027:HOH:O	2.20	0.41
1:A:101:LEU:N	1:A:103:LEU:CD1	2.82	0.41
2:B:270:LEU:HD12	2:B:291:LEU:HD21	2.01	0.41
2:B:288:CYS:HB3	2:B:312:GLN:CB	2.45	0.41
2:B:405:CYS:HA	2:B:440:SER:OG	2.20	0.41
3:B:1000:IHP:O25	3:B:1000:IHP:O16	2.38	0.41
2:B:173:GLY:HA3	2:B:197:GLU:O	2.20	0.41
2:B:287:VAL:HG13	2:B:291:LEU:HD13	1.97	0.41

Continued on next page...

Continued from previous page...

Atom-1	Atom-2	Interatomic distance (Å)	Clash overlap (Å)
1:A:9:LYS:HB3	1:A:10:SER:H	1.65	0.41
2:B:371:CYS:O	2:B:373:LYS:N	2.53	0.41
2:B:496:LYS:HG3	2:B:496:LYS:HZ3	1.76	0.41
1:A:22:VAL:HG13	1:A:22:VAL:O	2.21	0.41
1:A:127:GLY:HA2	2:B:26:ASP:OD1	2.21	0.41
2:B:473:MET:HE2	2:B:511:LEU:HD21	2.03	0.41
1:A:101:LEU:HB3	1:A:102:ILE:HD11	1.99	0.41
2:B:178:HIS:NE2	5:B:1231:HOH:O	2.37	0.41
2:B:391:THR:O	2:B:392:ILE:C	2.60	0.41
2:B:85:VAL:HG22	2:B:512:TRP:CH2	2.56	0.41
2:B:477:LEU:HA	2:B:477:LEU:HD23	1.77	0.41
1:A:44:LEU:HA	1:A:45:PRO:HD3	1.97	0.40
2:B:268:ARG:HA	2:B:268:ARG:HD3	1.81	0.40

All (7) symmetry-related close contacts are listed below. The label for Atom-2 includes the symmetry operator and encoded unit-cell translations to be applied.

Atom-1	Atom-2	Interatomic distance (Å)	Clash overlap (Å)
2:B:565:PRO:CD	2:B:567:PHE:CE1[2_656]	1.62	0.58
5:A:166:HOH:O	5:B:1065:HOH:O[3_545]	1.78	0.42
2:B:567:PHE:O	5:B:1083:HOH:O[2_656]	1.81	0.39
2:B:565:PRO:CG	2:B:567:PHE:CD1[2_656]	1.83	0.37
2:B:417:LEU:CD1	5:B:1119:HOH:O[3_455]	1.92	0.28
2:B:430:HIS:CE1	5:A:166:HOH:O[3_455]	2.01	0.19
2:B:565:PRO:CG	2:B:567:PHE:CE1[2_656]	2.06	0.14

5.3 Torsion angles [i](#)

5.3.1 Protein backbone [i](#)

In the following table, the Percentiles column shows the percent Ramachandran outliers of the chain as a percentile score with respect to all X-ray entries followed by that with respect to entries of similar resolution.

The Analysed column shows the number of residues for which the backbone conformation was analysed, and the total number of residues.

Mol	Chain	Analysed	Favoured	Allowed	Outliers	Percentiles
1	A	82/160 (51%)	58 (71%)	10 (12%)	14 (17%)	0 0

Continued on next page...

Continued from previous page...

Mol	Chain	Analysed	Favoured	Allowed	Outliers	Percentiles	
2	B	565/594 (95%)	508 (90%)	47 (8%)	10 (2%)	8	21
All	All	647/754 (86%)	566 (88%)	57 (9%)	24 (4%)	3	7

All (24) Ramachandran outliers are listed below:

Mol	Chain	Res	Type
1	A	21	ALA
1	A	29	ILE
1	A	57	GLU
1	A	105	ALA
1	A	107	TYR
2	B	165	GLU
2	B	570	PRO
1	A	102	ILE
1	A	103	LEU
1	A	109	ASN
1	A	138	ASN
2	B	549	GLU
1	A	106	ASN
1	A	135	THR
1	A	136	THR
2	B	225	GLU
2	B	455	ALA
2	B	164	ARG
2	B	172	SER
2	B	283	ALA
1	A	145	PRO
2	B	196	SER
1	A	45	PRO
2	B	131	ASN

5.3.2 Protein sidechains ⓘ

In the following table, the Percentiles column shows the percent sidechain outliers of the chain as a percentile score with respect to all X-ray entries followed by that with respect to entries of similar resolution.

The Analysed column shows the number of residues for which the sidechain conformation was analysed, and the total number of residues.

Mol	Chain	Analysed	Rotameric	Outliers	Percentiles	
1	A	81/137 (59%)	67 (83%)	14 (17%)	2	5
2	B	500/525 (95%)	446 (89%)	54 (11%)	6	15
All	All	581/662 (88%)	513 (88%)	68 (12%)	5	12

All (68) residues with a non-rotameric sidechain are listed below:

Mol	Chain	Res	Type
1	A	29	ILE
1	A	47	VAL
1	A	51	ILE
1	A	101	LEU
1	A	102	ILE
1	A	103	LEU
1	A	111	LYS
1	A	114	LEU
1	A	120	THR
1	A	124	MET
1	A	137	PHE
1	A	139	ILE
1	A	145	PRO
1	A	153	ARG
2	B	27	ARG
2	B	33	VAL
2	B	35	LYS
2	B	42	ARG
2	B	69	ARG
2	B	87	ASP
2	B	102	SER
2	B	109	GLU
2	B	111	ARG
2	B	123	GLU
2	B	124	LEU
2	B	139	SER
2	B	141	GLU
2	B	156	ARG
2	B	164	ARG
2	B	165	GLU
2	B	167	ASP
2	B	174	HIS
2	B	177	SER
2	B	182	THR
2	B	192	SER

Continued on next page...

Continued from previous page...

Mol	Chain	Res	Type
2	B	198	VAL
2	B	199	SER
2	B	201	SER
2	B	206	LEU
2	B	227	LEU
2	B	238	GLU
2	B	248	GLU
2	B	262	SER
2	B	275	ASP
2	B	286	SER
2	B	291	LEU
2	B	309	LEU
2	B	359	LEU
2	B	364	LEU
2	B	369	MET
2	B	374	LEU
2	B	378	LEU
2	B	381	CYS
2	B	432	LYS
2	B	438	SER
2	B	440	SER
2	B	462	SER
2	B	471	LEU
2	B	483	LEU
2	B	490	ASP
2	B	530	MET
2	B	534	ASN
2	B	541	ARG
2	B	545	ASP
2	B	549	GLU
2	B	561	THR
2	B	575	ASN
2	B	576	MET

Some sidechains can be flipped to improve hydrogen bonding and reduce clashes. All (4) such sidechains are listed below:

Mol	Chain	Res	Type
1	A	109	ASN
2	B	178	HIS
2	B	312	GLN
2	B	317	GLN

5.3.3 RNA ⓘ

There are no RNA molecules in this entry.

5.4 Non-standard residues in protein, DNA, RNA chains ⓘ

There are no non-standard protein/DNA/RNA residues in this entry.

5.5 Carbohydrates ⓘ

There are no monosaccharides in this entry.

5.6 Ligand geometry ⓘ

2 ligands are modelled in this entry.

In the following table, the Counts columns list the number of bonds (or angles) for which Mogul statistics could be retrieved, the number of bonds (or angles) that are observed in the model and the number of bonds (or angles) that are defined in the Chemical Component Dictionary. The Link column lists molecule types, if any, to which the group is linked. The Z score for a bond length (or angle) is the number of standard deviations the observed value is removed from the expected value. A bond length (or angle) with $|Z| > 2$ is considered an outlier worth inspection. RMSZ is the root-mean-square of all Z scores of the bond lengths (or angles).

Mol	Type	Chain	Res	Link	Bond lengths			Bond angles		
					Counts	RMSZ	$\# Z > 2$	Counts	RMSZ	$\# Z > 2$
4	2S3	B	1001	-	14,17,17	1.53	3 (21%)	15,23,23	2.04	5 (33%)
3	IHP	B	1000	-	36,36,36	1.24	3 (8%)	54,60,60	2.85	22 (40%)

In the following table, the Chirals column lists the number of chiral outliers, the number of chiral centers analysed, the number of these observed in the model and the number defined in the Chemical Component Dictionary. Similar counts are reported in the Torsion and Rings columns. '-' means no outliers of that kind were identified.

Mol	Type	Chain	Res	Link	Chirals	Torsions	Rings
4	2S3	B	1001	-	-	3/4/11/11	0/2/2/2
3	IHP	B	1000	-	-	7/30/54/54	0/1/1/1

All (6) bond length outliers are listed below:

Mol	Chain	Res	Type	Atoms	Z	Observed(Å)	Ideal(Å)
3	B	1000	IHP	P3-O13	4.59	1.68	1.59

Continued on next page...

Continued from previous page...

Mol	Chain	Res	Type	Atoms	Z	Observed(Å)	Ideal(Å)
4	B	1001	2S3	CAH-CAN	3.14	1.45	1.37
3	B	1000	IHP	P4-O14	2.83	1.64	1.59
4	B	1001	2S3	CAD-CAF	2.59	1.42	1.36
3	B	1000	IHP	P1-O11	2.39	1.63	1.59
4	B	1001	2S3	CAN-CAP	-2.06	1.38	1.40

All (27) bond angle outliers are listed below:

Mol	Chain	Res	Type	Atoms	Z	Observed(°)	Ideal(°)
3	B	1000	IHP	O13-C3-C2	8.43	128.56	108.69
3	B	1000	IHP	C3-C2-C1	6.73	125.14	110.41
3	B	1000	IHP	O12-C2-C3	6.19	123.28	108.69
3	B	1000	IHP	C4-C3-C2	-5.72	97.89	110.41
3	B	1000	IHP	C6-C5-C4	4.81	120.95	110.41
3	B	1000	IHP	O11-C1-C6	4.47	119.23	108.69
4	B	1001	2S3	CAG-CAP-CAO	4.40	124.00	118.17
3	B	1000	IHP	O11-C1-C2	4.11	118.39	108.69
3	B	1000	IHP	O15-C5-C6	4.08	118.31	108.69
3	B	1000	IHP	O16-C6-C5	3.90	117.88	108.69
3	B	1000	IHP	C5-C4-C3	3.71	118.52	110.41
3	B	1000	IHP	C6-C1-C2	-3.69	102.34	110.41
3	B	1000	IHP	O14-C4-C3	3.53	117.02	108.69
3	B	1000	IHP	O31-P1-O11	-3.16	91.82	105.99
3	B	1000	IHP	O16-C6-C1	3.11	116.03	108.69
4	B	1001	2S3	CAG-CAP-CAN	-3.09	128.51	134.68
3	B	1000	IHP	O42-P2-O12	-3.02	92.45	105.99
4	B	1001	2S3	CAE-CAD-CAF	2.99	124.62	120.44
3	B	1000	IHP	C5-C6-C1	2.98	116.93	110.41
3	B	1000	IHP	O33-P3-O13	2.61	117.67	105.99
4	B	1001	2S3	CAM-CAQ-CAN	-2.57	107.43	111.17
3	B	1000	IHP	O43-P3-O23	2.56	120.69	110.68
3	B	1000	IHP	O43-P3-O13	-2.46	94.97	105.99
3	B	1000	IHP	O46-P6-O36	2.43	116.92	107.64
3	B	1000	IHP	O36-P6-O16	-2.35	95.45	105.99
3	B	1000	IHP	O45-P5-O35	2.28	116.34	107.64
4	B	1001	2S3	CAE-CAG-CAP	-2.22	117.81	120.89

There are no chirality outliers.

All (10) torsion outliers are listed below:

Mol	Chain	Res	Type	Atoms
4	B	1001	2S3	CAJ-CAK-CAQ-CAN

Continued on next page...

Continued from previous page...

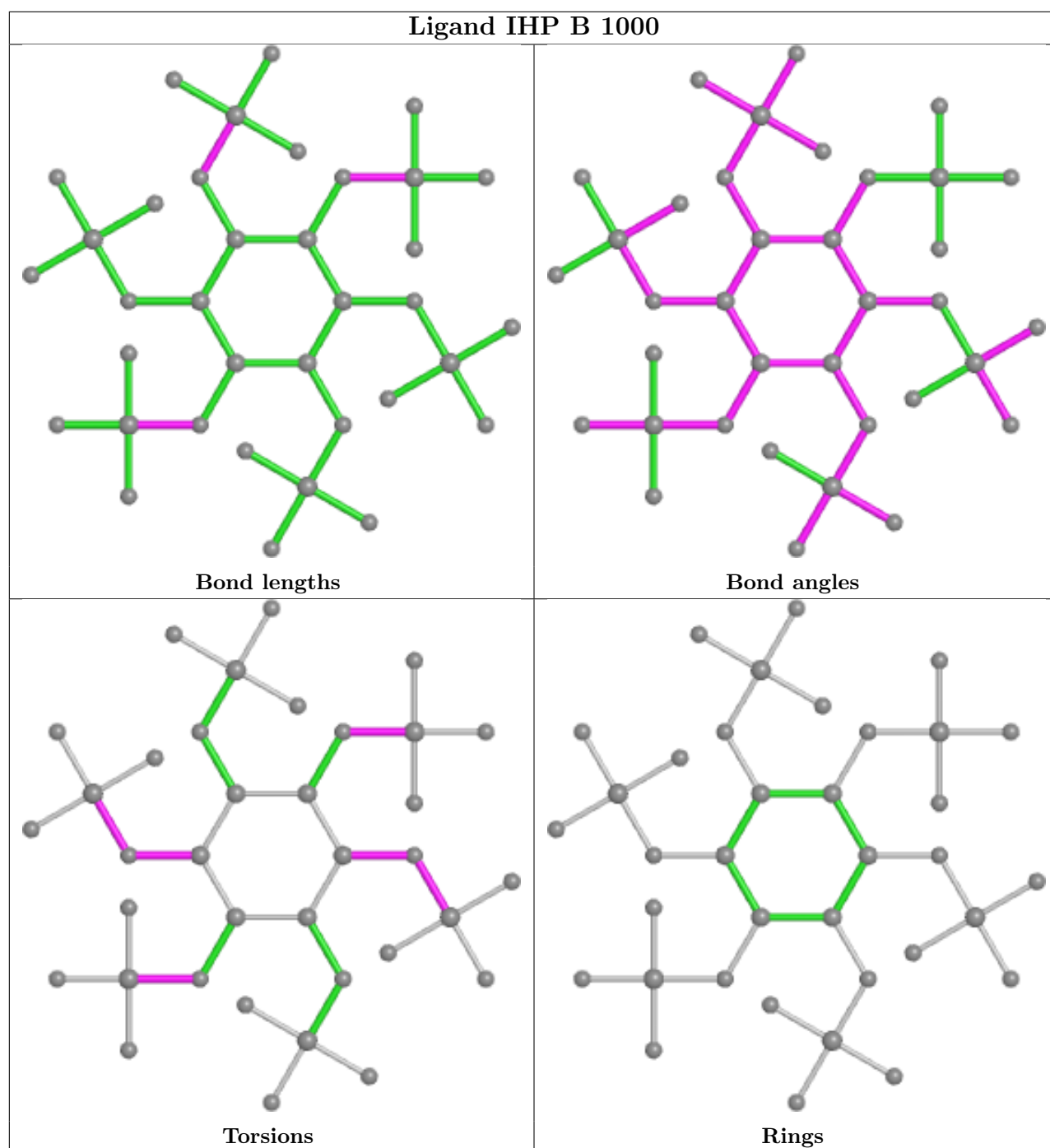
Mol	Chain	Res	Type	Atoms
3	B	1000	IHP	C3-C2-O12-P2
3	B	1000	IHP	C6-C5-O15-P5
3	B	1000	IHP	C2-O12-P2-O22
3	B	1000	IHP	C4-O14-P4-O24
4	B	1001	2S3	CAJ-CAK-CAQ-CAM
4	B	1001	2S3	CAI-CAJ-CAK-CAQ
3	B	1000	IHP	C1-O11-P1-O31
3	B	1000	IHP	C5-O15-P5-O35
3	B	1000	IHP	C5-O15-P5-O45

There are no ring outliers.

2 monomers are involved in 14 short contacts:

Mol	Chain	Res	Type	Clashes	Symm-Clashes
4	B	1001	2S3	8	0
3	B	1000	IHP	6	0

The following is a two-dimensional graphical depiction of Mogul quality analysis of bond lengths, bond angles, torsion angles, and ring geometry for all instances of the Ligand of Interest. In addition, ligands with molecular weight > 250 and outliers as shown on the validation Tables will also be included. For torsion angles, if less than 5% of the Mogul distribution of torsion angles is within 10 degrees of the torsion angle in question, then that torsion angle is considered an outlier. Any bond that is central to one or more torsion angles identified as an outlier by Mogul will be highlighted in the graph. For rings, the root-mean-square deviation (RMSD) between the ring in question and similar rings identified by Mogul is calculated over all ring torsion angles. If the average RMSD is greater than 60 degrees and the minimal RMSD between the ring in question and any Mogul-identified rings is also greater than 60 degrees, then that ring is considered an outlier. The outliers are highlighted in purple. The color gray indicates Mogul did not find sufficient equivalents in the CSD to analyse the geometry.



5.7 Other polymers [i](#)

There are no such residues in this entry.

5.8 Polymer linkage issues [i](#)

There are no chain breaks in this entry.

6 Fit of model and data

6.1 Protein, DNA and RNA chains

Unable to reproduce the depositors R factor - this section is therefore empty.

6.2 Non-standard residues in protein, DNA, RNA chains

Unable to reproduce the depositors R factor - this section is therefore empty.

6.3 Carbohydrates

Unable to reproduce the depositors R factor - this section is therefore empty.

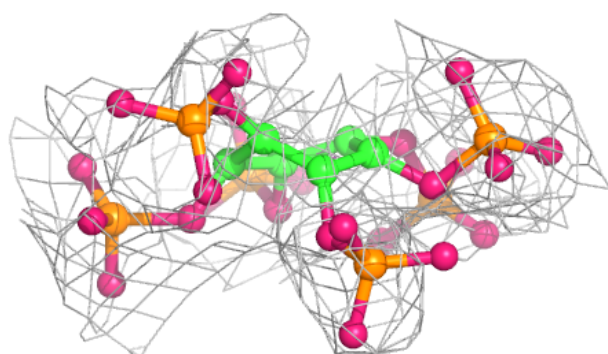
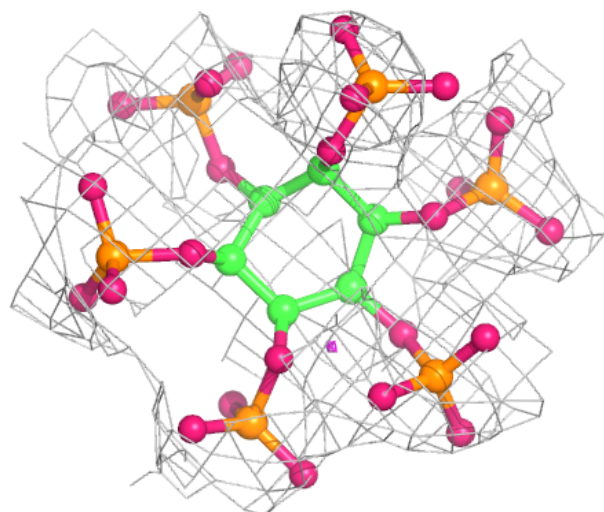
6.4 Ligands

Unable to reproduce the depositors R factor - this section is therefore empty.

The following is a graphical depiction of the model fit to experimental electron density of all instances of the Ligand of Interest. In addition, ligands with molecular weight > 250 and outliers as shown on the geometry validation Tables will also be included. Each fit is shown from different orientation to approximate a three-dimensional view.

Electron density around IHP B 1000:

$2mF_o-DF_c$ (at 0.7 rmsd) in gray
 mF_o-DF_c (at 3 rmsd) in purple (negative)
and green (positive)



6.5 Other polymers [i](#)

Unable to reproduce the depositors R factor - this section is therefore empty.