



Full wwPDB X-ray Structure Validation Report ⓘ

May 15, 2020 – 05:44 am BST

PDB ID : 4C6Y
Title : Ancestral PNCA (last common ancestors of Gram-positive and Gram-negative bacteria) beta-lactamase class A
Authors : Gavira, J.A.; Risso, V.A.; Sanchez-Ruiz, J.M.
Deposited on : 2013-09-19
Resolution : 1.80 Å(reported)

This is a Full wwPDB X-ray Structure Validation Report for a publicly released PDB entry.

We welcome your comments at validation@mail.wwpdb.org

A user guide is available at

<https://www.wwpdb.org/validation/2017/XrayValidationReportHelp>

with specific help available everywhere you see the ⓘ symbol.

The following versions of software and data (see [references ⓘ](#)) were used in the production of this report:

MolProbity : 4.02b-467
Mogul : 1.8.5 (274361), CSD as541be (2020)
Xtriage (Phenix) : 1.13
EDS : 2.11
Percentile statistics : 20191225.v01 (using entries in the PDB archive December 25th 2019)
Refmac : 5.8.0158
CCP4 : 7.0.044 (Gargrove)
Ideal geometry (proteins) : Engh & Huber (2001)
Ideal geometry (DNA, RNA) : Parkinson et al. (1996)
Validation Pipeline (wwPDB-VP) : 2.11

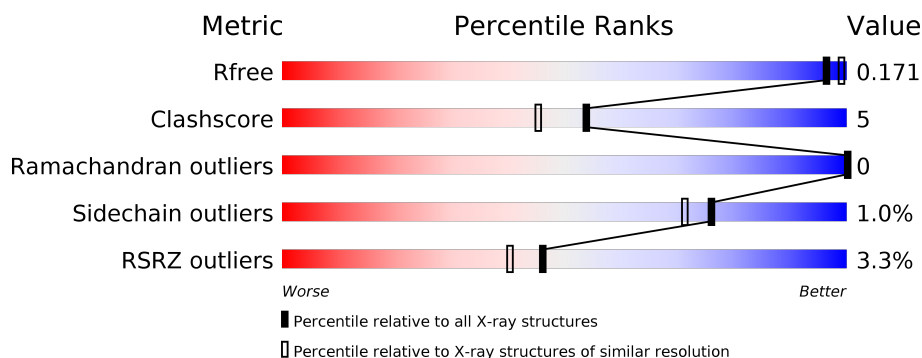
1 Overall quality at a glance

The following experimental techniques were used to determine the structure:

X-RAY DIFFRACTION

The reported resolution of this entry is 1.80 Å.

Percentile scores (ranging between 0-100) for global validation metrics of the entry are shown in the following graphic. The table shows the number of entries on which the scores are based.



Metric	Whole archive (#Entries)	Similar resolution (#Entries, resolution range(Å))
R_{free}	130704	5950 (1.80-1.80)
Clashscore	141614	6793 (1.80-1.80)
Ramachandran outliers	138981	6697 (1.80-1.80)
Sidechain outliers	138945	6696 (1.80-1.80)
RSRZ outliers	127900	5850 (1.80-1.80)

The table below summarises the geometric issues observed across the polymeric chains and their fit to the electron density. The red, orange, yellow and green segments on the lower bar indicate the fraction of residues that contain outliers for ≥ 3 , 2, 1 and 0 types of geometric quality criteria respectively. A grey segment represents the fraction of residues that are not modelled. The numeric value for each fraction is indicated below the corresponding segment, with a dot representing fractions $\leq 5\%$. The upper red bar (where present) indicates the fraction of residues that have poor fit to the electron density. The numeric value is given above the bar.

Mol	Chain	Length	Quality of chain
1	A	262	
1	B	262	

The following table lists non-polymeric compounds, carbohydrate monomers and non-standard residues in protein, DNA, RNA chains that are outliers for geometric or electron-density-fit criteria:

Mol	Type	Chain	Res	Chirality	Geometry	Clashes	Electron density
3	PEG	A	307	-	X	X	-
5	ACT	B	300	-	-	X	-

2 Entry composition [i](#)

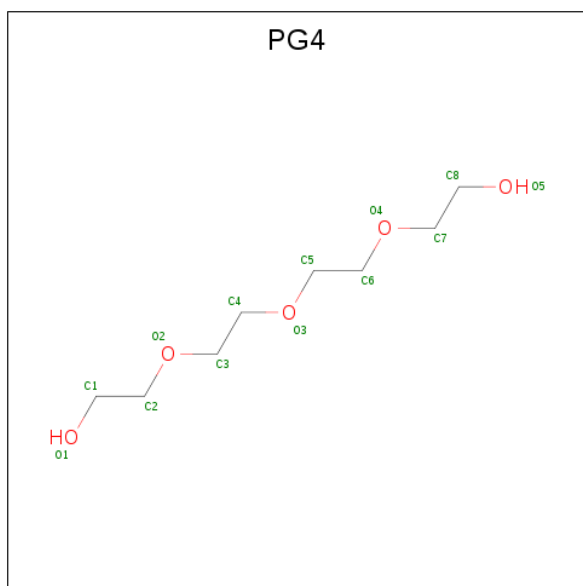
There are 8 unique types of molecules in this entry. The entry contains 9212 atoms, of which 4539 are hydrogens and 0 are deuteriums.

In the tables below, the ZeroOcc column contains the number of atoms modelled with zero occupancy, the AltConf column contains the number of residues with at least one atom in alternate conformation and the Trace column contains the number of residues modelled with at most 2 atoms.

- Molecule 1 is a protein called BETA-LACTAMASE.

Mol	Chain	Residues	Atoms						ZeroOcc	AltConf	Trace
1	A	262	Total	C	H	N	O	S	0	19	0
			4213	1306	2126	377	399	5			
1	B	261	Total	C	H	N	O	S	0	22	0
			4246	1311	2153	382	395	5			

- Molecule 2 is TETRAETHYLENE GLYCOL (three-letter code: PG4) (formula: C₈H₁₈O₅).



Mol	Chain	Residues	Atoms				ZeroOcc	AltConf
2	A	1	Total	C	H	O	0	0
			31	8	18	5		
2	B	1	Total	C	H	O	0	0
			31	8	18	5		

- Molecule 3 is DI(HYDROXYETHYL)ETHER (three-letter code: PEG) (formula: C₄H₁₀O₃).



Mol	Chain	Residues	Atoms				ZeroOcc	AltConf
3	A	1	Total	C	H	O	0	0
			17	4	10	3		
3	A	1	Total	C	H	O	0	0
			17	4	10	3		
3	A	1	Total	C	H	O	0	0
			17	4	10	3		
3	A	1	Total	C	H	O	0	0
			17	4	10	3		
3	A	1	Total	C	H	O	0	0
			17	4	10	3		
3	A	1	Total	C	H	O	0	0
			17	4	10	3		
3	A	1	Total	C	H	O	0	0
			17	4	10	3		
3	A	1	Total	C	H	O	0	0
			17	4	10	3		
3	A	1	Total	C	H	O	0	0
			17	4	10	3		
3	B	1	Total	C	H	O	0	0
			17	4	10	3		

Continued on next page...

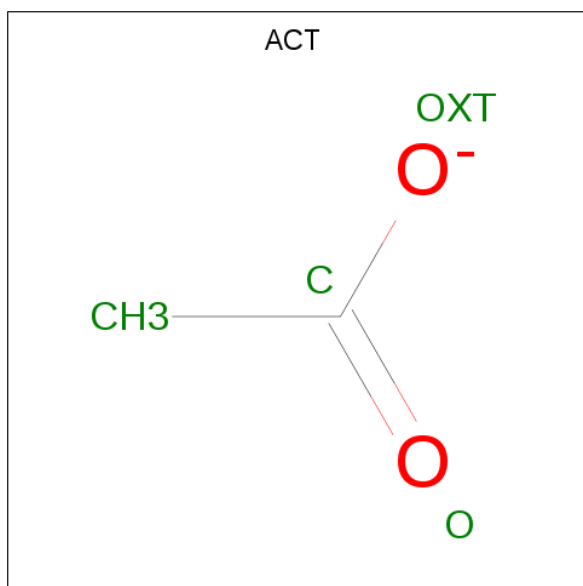
Continued from previous page...

Mol	Chain	Residues	Atoms				ZeroOcc	AltConf
3	B	1	Total	C	H	O	0	0
			17	4	10	3		
3	B	1	Total	C	H	O	0	0
			17	4	10	3		
3	B	1	Total	C	H	O	0	0
			17	4	10	3		
3	B	1	Total	C	H	O	0	0
			17	4	10	3		
3	B	1	Total	C	H	O	0	0
			17	4	10	3		
3	B	1	Total	C	H	O	0	0
			17	4	10	3		

- Molecule 4 is SODIUM ION (three-letter code: NA) (formula: Na).

Mol	Chain	Residues	Atoms		ZeroOcc	AltConf
4	A	2	Total	Na	0	0
			2	2		

- Molecule 5 is ACETATE ION (three-letter code: ACT) (formula: C₂H₃O₂).



Mol	Chain	Residues	Atoms				ZeroOcc	AltConf
5	A	1	Total	C	H	O	0	0
			7	2	3	2		

Continued on next page...

Continued from previous page...

Mol	Chain	Residues	Atoms				ZeroOcc	AltConf
5	B	1	Total	C	H	O	0	0
			7	2	3	2		

- Molecule 6 is GLYCEROL (three-letter code: GOL) (formula: $C_3H_8O_3$).



Mol	Chain	Residues	Atoms				ZeroOcc	AltConf
6	A	1	Total	C	H	O	0	0
			14	3	8	3		

- Molecule 7 is CHLORIDE ION (three-letter code: CL) (formula: Cl).

Mol	Chain	Residues	Atoms		ZeroOcc	AltConf
7	B	1	Total	Cl	0	0
			1	1		

- Molecule 8 is water.

Mol	Chain	Residues	Atoms		ZeroOcc	AltConf
8	A	209	Total	O	0	0
			209	209		
8	B	94	Total	O	0	0
			94	94		

3 Residue-property plots [i](#)

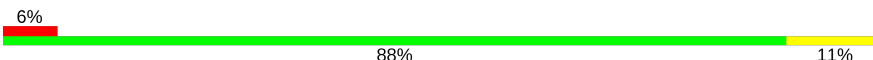
These plots are drawn for all protein, RNA and DNA chains in the entry. The first graphic for a chain summarises the proportions of the various outlier classes displayed in the second graphic. The second graphic shows the sequence view annotated by issues in geometry and electron density. Residues are color-coded according to the number of geometric quality criteria for which they contain at least one outlier: green = 0, yellow = 1, orange = 2 and red = 3 or more. A red dot above a residue indicates a poor fit to the electron density ($RSRZ > 2$). Stretches of 2 or more consecutive residues without any outlier are shown as a green connector. Residues present in the sample, but not in the model, are shown in grey.

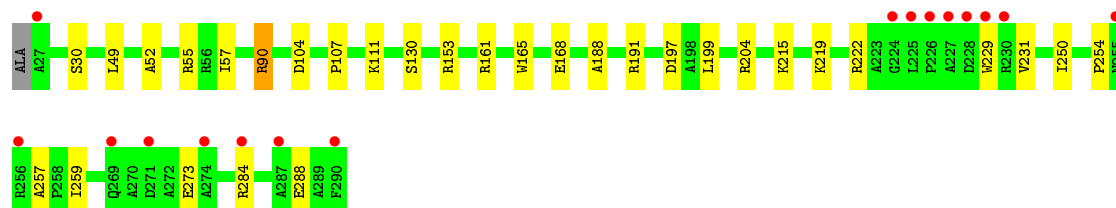
• Molecule 1: BETA-LACTAMASE

Chain A: 



• Molecule 1: BETA-LACTAMASE

Chain B: 



4 Data and refinement statistics

Property	Value	Source
Space group	P 21 21 21	Depositor
Cell constants a, b, c, α , β , γ	39.58 Å 57.47 Å 240.40 Å 90.00° 90.00° 90.00°	Depositor
Resolution (Å)	46.70 – 1.80 46.70 – 1.80	Depositor EDS
% Data completeness (in resolution range)	99.8 (46.70-1.80) 99.9 (46.70-1.80)	Depositor EDS
R_{merge}	0.06	Depositor
R_{sym}	(Not available)	Depositor
$\langle I/\sigma(I) \rangle$ ¹	1.48 (at 1.79 Å)	Xtriage
Refinement program	PHENIX (PHENIX.REFINE)	Depositor
R, R_{free}	0.142 , 0.170 0.146 , 0.171	Depositor DCC
R_{free} test set	2662 reflections (5.11%)	wwPDB-VP
Wilson B-factor (Å ²)	20.3	Xtriage
Anisotropy	0.723	Xtriage
Bulk solvent k_{sol} (e/Å ³), B_{sol} (Å ²)	0.42 , 62.9	EDS
L-test for twinning ²	$\langle L \rangle = 0.48$, $\langle L^2 \rangle = 0.31$	Xtriage
Estimated twinning fraction	No twinning to report.	Xtriage
F_o, F_c correlation	0.97	EDS
Total number of atoms	9212	wwPDB-VP
Average B, all atoms (Å ²)	30.0	wwPDB-VP

Xtriage's analysis on translational NCS is as follows: *The largest off-origin peak in the Patterson function is 5.05% of the height of the origin peak. No significant pseudotranslation is detected.*

¹Intensities estimated from amplitudes.

²Theoretical values of $\langle |L| \rangle$, $\langle L^2 \rangle$ for acentric reflections are 0.5, 0.333 respectively for untwinned datasets, and 0.375, 0.2 for perfectly twinned datasets.

5 Model quality [i](#)

5.1 Standard geometry [i](#)

Bond lengths and bond angles in the following residue types are not validated in this section: GOL, CL, NA, PG4, ACT, PEG

The Z score for a bond length (or angle) is the number of standard deviations the observed value is removed from the expected value. A bond length (or angle) with $|Z| > 5$ is considered an outlier worth inspection. RMSZ is the root-mean-square of all Z scores of the bond lengths (or angles).

Mol	Chain	Bond lengths		Bond angles	
		RMSZ	$\# Z > 5$	RMSZ	$\# Z > 5$
1	A	0.54	0/2181	0.66	0/2957
1	B	0.44	0/2203	0.60	1/2988 (0.0%)
All	All	0.49	0/4384	0.63	1/5945 (0.0%)

There are no bond length outliers.

All (1) bond angle outliers are listed below:

Mol	Chain	Res	Type	Atoms	Z	Observed(°)	Ideal(°)
1	B	90	ARG	O-C-N	-6.15	112.85	122.70

There are no chirality outliers.

There are no planarity outliers.

5.2 Too-close contacts [i](#)

In the following table, the Non-H and H(model) columns list the number of non-hydrogen atoms and hydrogen atoms in the chain respectively. The H(added) column lists the number of hydrogen atoms added and optimized by MolProbity. The Clashes column lists the number of clashes within the asymmetric unit, whereas Symm-Clashes lists symmetry related clashes.

Mol	Chain	Non-H	H(model)	H(added)	Clashes	Symm-Clashes
1	A	2087	2126	2099	20	0
1	B	2093	2153	2122	23	0
2	A	13	18	18	1	0
2	B	13	18	18	2	0
3	A	91	130	129	11	1
3	B	56	80	79	4	0
4	A	2	0	0	0	0
5	A	4	3	3	1	0

Continued on next page...

Continued from previous page...

Mol	Chain	Non-H	H(model)	H(added)	Clashes	Symm-Clashes
5	B	4	3	3	3	0
6	A	6	8	8	0	0
7	B	1	0	0	0	0
8	A	209	0	0	8	3
8	B	94	0	0	3	0
All	All	4673	4539	4479	47	3

The all-atom clashscore is defined as the number of clashes found per 1000 atoms (including hydrogen atoms). The all-atom clashscore for this structure is 5.

All (47) close contacts within the same asymmetric unit are listed below, sorted by their clash magnitude.

Atom-1	Atom-2	Interatomic distance (Å)	Clash overlap (Å)
1:B:90:ARG:NH1	8:B:2028:HOH:O	2.01	0.94
1:A:105[B]:TYR:OH	8:A:2092:HOH:O	1.91	0.89
1:A:255[B]:ASN:ND2	8:A:2181:HOH:O	2.11	0.84
1:B:219[A]:LYS:HZ2	2:B:301:PG4:H42	1.51	0.74
1:B:284:ARG:NH1	1:B:288:GLU:OE2	2.22	0.73
1:A:130[A]:SER:OG	3:A:307:PEG:H41	1.94	0.68
1:A:188:ALA:HB3	3:A:294:PEG:H32	1.77	0.66
1:A:230[B]:ARG:NH2	8:A:2173:HOH:O	2.27	0.64
1:A:288:GLU:OE1	8:A:2201:HOH:O	2.15	0.62
1:A:229:TRP:O	5:A:296:ACT:H1	2.01	0.60
8:A:2200:HOH:O	3:B:291:PEG:H41	2.00	0.59
1:A:93:ARG:HD3	3:A:302:PEG:H11	1.84	0.59
1:A:55[A]:ARG:HD2	1:B:153[A]:ARG:NH1	2.20	0.57
1:B:161:ARG:HH12	5:B:300:ACT:H2	1.69	0.57
1:B:49[B]:LEU:HD12	3:B:291:PEG:H31	1.87	0.55
1:A:26:ALA:N	1:B:197:ASP:OD1	2.42	0.52
1:A:184[A]:ARG:HE	3:A:301:PEG:H42	1.76	0.51
3:A:295:PEG:H12	8:A:2098:HOH:O	2.10	0.51
1:A:190:LEU:HG	1:A:194[B]:LEU:HD12	1.94	0.50
1:B:52:ALA:HB2	1:B:257:ALA:HB3	1.94	0.50
1:B:199:LEU:HB2	1:B:204[B]:ARG:HG3	1.94	0.49
1:B:229:TRP:CD1	1:B:254:PRO:HD3	2.47	0.49
1:B:250:ILE:CG1	1:B:259[B]:ILE:HG12	2.43	0.49
1:A:126:ALA:O	1:A:130[B]:SER:HA	2.14	0.47
1:B:55[B]:ARG:CZ	1:B:57:ILE:HD11	2.45	0.47
1:B:250:ILE:HG12	1:B:259[B]:ILE:HG12	1.96	0.46
1:B:222:ARG:HG2	1:B:231:VAL:HG11	1.98	0.46
1:B:107:PRO:O	1:B:111:LYS:HD3	2.16	0.46

Continued on next page...

Continued from previous page...

Atom-1	Atom-2	Interatomic distance (Å)	Clash overlap (Å)
1:B:250:ILE:HD11	1:B:259[B]:ILE:HD11	1.96	0.46
1:A:130[A]:SER:HB3	3:A:307:PEG:O2	2.15	0.45
1:B:165:TRP:H	3:B:295:PEG:H11	1.81	0.45
1:A:63:ASP:OD1	1:A:184[A]:ARG:NH1	2.44	0.45
3:A:307:PEG:H31	8:A:2052:HOH:O	2.17	0.45
1:A:70:SER:HB2	3:A:307:PEG:H42	1.99	0.44
1:B:188:ALA:HA	3:B:291:PEG:H32	1.98	0.44
1:B:49[B]:LEU:HD11	1:B:191:ARG:HD2	2.00	0.44
1:A:55[A]:ARG:HE	5:B:300:ACT:H3	1.83	0.43
1:A:105[B]:TYR:OH	1:A:129:TYR:O	2.28	0.43
1:B:168:GLU:CG	8:B:2094:HOH:O	2.67	0.42
3:A:297:PEG:H31	3:A:298:PEG:H31	2.01	0.42
1:A:105[B]:TYR:HE2	1:A:130[B]:SER:HB3	1.85	0.42
1:B:161:ARG:NH1	5:B:300:ACT:H2	2.32	0.42
3:A:297:PEG:C3	3:A:298:PEG:H31	2.49	0.42
1:A:95:ILE:HG12	3:A:304:PEG:H21	2.01	0.41
2:A:291:PG4:H41	8:A:2058:HOH:O	2.21	0.41
1:B:215:LYS:HE3	8:B:2078:HOH:O	2.21	0.41
1:B:219[A]:LYS:HZ2	2:B:301:PG4:C4	2.26	0.41

All (3) symmetry-related close contacts are listed below. The label for Atom-2 includes the symmetry operator and encoded unit-cell translations to be applied.

Atom-1	Atom-2	Interatomic distance (Å)	Clash overlap (Å)
8:A:2039:HOH:O	8:A:2121:HOH:O[3_444]	1.83	0.37
3:A:300:PEG:O1	8:A:2145:HOH:O[1_655]	1.90	0.30
8:A:2147:HOH:O	8:A:2175:HOH:O[1_455]	2.04	0.16

5.3 Torsion angles ⓘ

5.3.1 Protein backbone ⓘ

In the following table, the Percentiles column shows the percent Ramachandran outliers of the chain as a percentile score with respect to all X-ray entries followed by that with respect to entries of similar resolution.

The Analysed column shows the number of residues for which the backbone conformation was analysed, and the total number of residues.

Mol	Chain	Analysed	Favoured	Allowed	Outliers	Percentiles	
1	A	279/262 (106%)	275 (99%)	4 (1%)	0	100	100
1	B	283/262 (108%)	279 (99%)	4 (1%)	0	100	100
All	All	562/524 (107%)	554 (99%)	8 (1%)	0	100	100

There are no Ramachandran outliers to report.

5.3.2 Protein sidechains ⓘ

In the following table, the Percentiles column shows the percent sidechain outliers of the chain as a percentile score with respect to all X-ray entries followed by that with respect to entries of similar resolution.

The Analysed column shows the number of residues for which the sidechain conformation was analysed, and the total number of residues.

Mol	Chain	Analysed	Rotameric	Outliers	Percentiles	
1	A	217/199 (109%)	217 (100%)	0	100	100
1	B	220/199 (111%)	215 (98%)	5 (2%)	50	37
All	All	437/398 (110%)	432 (99%)	5 (1%)	76	68

All (5) residues with a non-rotameric sidechain are listed below:

Mol	Chain	Res	Type
1	B	30[A]	SER
1	B	30[B]	SER
1	B	104	ASP
1	B	130	SER
1	B	273	GLU

Some sidechains can be flipped to improve hydrogen bonding and reduce clashes. All (1) such sidechains are listed below:

Mol	Chain	Res	Type
1	B	112	HIS

5.3.3 RNA ⓘ

There are no RNA molecules in this entry.

5.4 Non-standard residues in protein, DNA, RNA chains ⓘ

There are no non-standard protein/DNA/RNA residues in this entry.

5.5 Carbohydrates ⓘ

There are no carbohydrates in this entry.

5.6 Ligand geometry ⓘ

Of 29 ligands modelled in this entry, 3 are monoatomic - leaving 26 for Mogul analysis.

In the following table, the Counts columns list the number of bonds (or angles) for which Mogul statistics could be retrieved, the number of bonds (or angles) that are observed in the model and the number of bonds (or angles) that are defined in the Chemical Component Dictionary. The Link column lists molecule types, if any, to which the group is linked. The Z score for a bond length (or angle) is the number of standard deviations the observed value is removed from the expected value. A bond length (or angle) with $|Z| > 2$ is considered an outlier worth inspection. RMSZ is the root-mean-square of all Z scores of the bond lengths (or angles).

Mol	Type	Chain	Res	Link	Bond lengths			Bond angles		
					Counts	RMSZ	$\# Z > 2$	Counts	RMSZ	$\# Z > 2$
3	PEG	B	297	-	6,6,6	0.49	0	5,5,5	0.73	0
3	PEG	B	298	-	6,6,6	0.55	0	5,5,5	0.74	0
3	PEG	A	304	-	6,6,6	0.60	0	5,5,5	0.66	0
3	PEG	A	307	-	6,6,6	1.86	1 (16%)	5,5,5	1.69	2 (40%)
3	PEG	A	297	-	6,6,6	0.62	0	5,5,5	0.77	0
3	PEG	A	305	-	6,6,6	0.60	0	5,5,5	0.93	0
6	GOL	A	306	-	5,5,5	0.43	0	5,5,5	0.40	0
3	PEG	A	301	4	6,6,6	0.59	0	5,5,5	1.03	0
3	PEG	A	299	-	6,6,6	0.63	0	5,5,5	0.59	0
3	PEG	A	300	-	6,6,6	0.76	0	5,5,5	0.53	0
3	PEG	A	302	-	6,6,6	0.63	0	5,5,5	0.64	0
3	PEG	A	303	-	6,6,6	0.60	0	5,5,5	0.53	0
3	PEG	A	298	-	6,6,6	0.58	0	5,5,5	0.76	0
3	PEG	A	292	-	6,6,6	0.53	0	5,5,5	0.91	0
2	PG4	A	291	-	12,12,12	0.66	0	11,11,11	0.93	0
3	PEG	B	291	-	6,6,6	0.70	0	5,5,5	0.62	0
3	PEG	B	295	-	6,6,6	0.58	0	5,5,5	0.93	0
3	PEG	B	296	-	6,6,6	0.64	0	5,5,5	0.48	0
5	ACT	B	300	-	1,3,3	0.38	0	0,3,3	0.00	-
5	ACT	A	296	-	1,3,3	0.76	0	0,3,3	0.00	-
3	PEG	A	294	-	6,6,6	0.66	0	5,5,5	1.43	1 (20%)
3	PEG	A	295	-	6,6,6	0.57	0	5,5,5	0.53	0

Mol	Type	Chain	Res	Link	Bond lengths			Bond angles		
					Counts	RMSZ	# Z > 2	Counts	RMSZ	# Z > 2
3	PEG	B	293	-	6,6,6	0.64	0	5,5,5	1.15	1 (20%)
3	PEG	B	299	-	6,6,6	0.56	0	5,5,5	0.93	0
2	PG4	B	301	-	12,12,12	0.64	0	11,11,11	1.11	2 (18%)
3	PEG	B	294	-	6,6,6	0.62	0	5,5,5	0.57	0

In the following table, the Chirals column lists the number of chiral outliers, the number of chiral centers analysed, the number of these observed in the model and the number defined in the Chemical Component Dictionary. Similar counts are reported in the Torsion and Rings columns. '-' means no outliers of that kind were identified.

Mol	Type	Chain	Res	Link	Chirals	Torsions	Rings
3	PEG	B	297	-	-	1/4/4/4	-
3	PEG	B	298	-	-	2/4/4/4	-
3	PEG	A	304	-	-	2/4/4/4	-
3	PEG	A	307	-	-	4/4/4/4	-
3	PEG	A	297	-	-	3/4/4/4	-
3	PEG	A	305	-	-	2/4/4/4	-
6	GOL	A	306	-	-	2/4/4/4	-
3	PEG	A	301	4	-	1/4/4/4	-
3	PEG	A	299	-	-	1/4/4/4	-
3	PEG	A	300	-	-	2/4/4/4	-
3	PEG	A	302	-	-	2/4/4/4	-
3	PEG	A	303	-	-	0/4/4/4	-
3	PEG	A	298	-	-	1/4/4/4	-
3	PEG	A	292	-	-	2/4/4/4	-
2	PG4	A	291	-	-	7/10/10/10	-
3	PEG	B	291	-	-	2/4/4/4	-
3	PEG	B	295	-	-	1/4/4/4	-
3	PEG	B	296	-	-	1/4/4/4	-
3	PEG	A	294	-	-	3/4/4/4	-
3	PEG	A	295	-	-	2/4/4/4	-
3	PEG	B	293	-	-	2/4/4/4	-
3	PEG	B	299	-	-	3/4/4/4	-
2	PG4	B	301	-	-	6/10/10/10	-
3	PEG	B	294	-	-	1/4/4/4	-

All (1) bond length outliers are listed below:

Mol	Chain	Res	Type	Atoms	Z	Observed(Å)	Ideal(Å)
3	A	307	PEG	O4-C4	-4.33	1.19	1.42

All (6) bond angle outliers are listed below:

Mol	Chain	Res	Type	Atoms	Z	Observed(°)	Ideal(°)
3	A	294	PEG	C3-O2-C2	3.09	126.68	113.29
3	A	307	PEG	O4-C4-C3	-2.89	95.05	111.81
2	B	301	PG4	C5-O3-C4	2.28	123.19	113.29
2	B	301	PG4	C3-O2-C2	2.28	123.15	113.29
3	A	307	PEG	C3-O2-C2	2.27	123.12	113.29
3	B	293	PEG	C3-O2-C2	2.07	122.27	113.29

There are no chirality outliers.

All (53) torsion outliers are listed below:

Mol	Chain	Res	Type	Atoms
6	A	306	GOL	C1-C2-C3-O3
2	B	301	PG4	C6-C5-O3-C4
2	B	301	PG4	C4-C3-O2-C2
3	A	305	PEG	C4-C3-O2-C2
3	B	293	PEG	O2-C3-C4-O4
3	A	297	PEG	O1-C1-C2-O2
3	A	302	PEG	O1-C1-C2-O2
6	A	306	GOL	O2-C2-C3-O3
3	B	298	PEG	O1-C1-C2-O2
3	A	292	PEG	O2-C3-C4-O4
3	B	299	PEG	O2-C3-C4-O4
3	A	297	PEG	O2-C3-C4-O4
3	A	294	PEG	O2-C3-C4-O4
2	B	301	PG4	O4-C7-C8-O5
3	B	291	PEG	O2-C3-C4-O4
3	A	300	PEG	O2-C3-C4-O4
3	B	296	PEG	O1-C1-C2-O2
3	A	307	PEG	O2-C3-C4-O4
3	B	295	PEG	O1-C1-C2-O2
3	B	299	PEG	O1-C1-C2-O2
3	A	295	PEG	O1-C1-C2-O2
3	A	307	PEG	C1-C2-O2-C3
3	A	295	PEG	O2-C3-C4-O4
3	B	293	PEG	C4-C3-O2-C2
2	B	301	PG4	C8-C7-O4-C6
3	A	301	PEG	C4-C3-O2-C2

Continued on next page...

Continued from previous page...

Mol	Chain	Res	Type	Atoms
3	B	291	PEG	C4-C3-O2-C2
3	A	298	PEG	C1-C2-O2-C3
3	A	300	PEG	C1-C2-O2-C3
3	A	297	PEG	C4-C3-O2-C2
2	A	291	PG4	O4-C7-C8-O5
3	B	294	PEG	C4-C3-O2-C2
3	B	298	PEG	C1-C2-O2-C3
3	A	299	PEG	O1-C1-C2-O2
3	A	304	PEG	C4-C3-O2-C2
2	A	291	PG4	O2-C3-C4-O3
2	A	291	PG4	C8-C7-O4-C6
3	B	297	PEG	C1-C2-O2-C3
3	A	292	PEG	C4-C3-O2-C2
3	A	305	PEG	O1-C1-C2-O2
3	B	299	PEG	C4-C3-O2-C2
3	A	294	PEG	C1-C2-O2-C3
3	A	307	PEG	C4-C3-O2-C2
3	A	304	PEG	C1-C2-O2-C3
2	A	291	PG4	C5-C6-O4-C7
3	A	307	PEG	O1-C1-C2-O2
3	A	294	PEG	C4-C3-O2-C2
2	A	291	PG4	O3-C5-C6-O4
2	A	291	PG4	C6-C5-O3-C4
2	B	301	PG4	O3-C5-C6-O4
2	A	291	PG4	C1-C2-O2-C3
2	B	301	PG4	O2-C3-C4-O3
3	A	302	PEG	C1-C2-O2-C3

There are no ring outliers.

15 monomers are involved in 23 short contacts:

Mol	Chain	Res	Type	Clashes	Symm-Clashes
3	A	304	PEG	1	0
3	A	307	PEG	4	0
3	A	297	PEG	2	0
3	A	301	PEG	1	0
3	A	300	PEG	0	1
3	A	302	PEG	1	0
3	A	298	PEG	2	0
2	A	291	PG4	1	0
3	B	291	PEG	3	0
3	B	295	PEG	1	0

Continued on next page...

Continued from previous page...

Mol	Chain	Res	Type	Clashes	Symm-Clashes
5	B	300	ACT	3	0
5	A	296	ACT	1	0
3	A	294	PEG	1	0
3	A	295	PEG	1	0
2	B	301	PG4	2	0

5.7 Other polymers [i](#)

There are no such residues in this entry.

5.8 Polymer linkage issues [i](#)

There are no chain breaks in this entry.

6 Fit of model and data ⓘ

6.1 Protein, DNA and RNA chains ⓘ

In the following table, the column labelled ‘#RSRZ> 2’ contains the number (and percentage) of RSRZ outliers, followed by percent RSRZ outliers for the chain as percentile scores relative to all X-ray entries and entries of similar resolution. The OWAB column contains the minimum, median, 95th percentile and maximum values of the occupancy-weighted average B-factor per residue. The column labelled ‘Q< 0.9’ lists the number of (and percentage) of residues with an average occupancy less than 0.9.

Mol	Chain	Analysed	<RSRZ>	#RSRZ>2	OWAB(Å ²)	Q<0.9
1	A	262/262 (100%)	-0.43	1 (0%) 92 90	11, 17, 32, 52	0
1	B	261/262 (99%)	0.03	16 (6%) 21 16	15, 29, 54, 73	0
All	All	523/524 (99%)	-0.20	17 (3%) 46 40	11, 22, 49, 73	0

All (17) RSRZ outliers are listed below:

Mol	Chain	Res	Type	RSRZ
1	B	27	ALA	5.8
1	B	229	TRP	4.5
1	B	271	ASP	3.9
1	B	226	PRO	3.9
1	B	290	PHE	3.2
1	B	255	ASN	3.1
1	A	105[A]	TYR	2.8
1	B	227	ALA	2.7
1	B	230[A]	ARG	2.6
1	B	287	ALA	2.6
1	B	269[A]	GLN	2.5
1	B	228	ASP	2.5
1	B	224	GLY	2.2
1	B	225	LEU	2.2
1	B	274	ALA	2.2
1	B	256[A]	ARG	2.0
1	B	284	ARG	2.0

6.2 Non-standard residues in protein, DNA, RNA chains ⓘ

There are no non-standard protein/DNA/RNA residues in this entry.

6.3 Carbohydrates ⓘ

There are no carbohydrates in this entry.

6.4 Ligands ⓘ

In the following table, the Atoms column lists the number of modelled atoms in the group and the number defined in the chemical component dictionary. The B-factors column lists the minimum, median, 95th percentile and maximum values of B factors of atoms in the group. The column labelled 'Q< 0.9' lists the number of atoms with occupancy less than 0.9.

Mol	Type	Chain	Res	Atoms	RSCC	RSR	B-factors(Å ²)	Q<0.9
3	PEG	B	297	7/7	0.65	0.16	52,63,69,69	0
6	GOL	A	306	6/6	0.66	0.24	50,70,78,84	0
5	ACT	B	300	4/4	0.72	0.18	45,55,60,60	0
3	PEG	B	294	7/7	0.72	0.24	46,62,71,78	0
3	PEG	A	298	7/7	0.74	0.17	52,64,79,84	0
4	NA	A	308	1/1	0.77	0.15	70,70,70,70	0
2	PG4	B	301	13/13	0.80	0.26	48,82,106,107	0
3	PEG	A	294	7/7	0.80	0.19	33,44,59,63	0
3	PEG	A	295	7/7	0.81	0.14	45,60,79,79	0
3	PEG	A	305	7/7	0.82	0.16	58,71,78,81	0
3	PEG	B	298	7/7	0.82	0.19	49,63,74,82	0
3	PEG	B	295	7/7	0.83	0.28	32,53,73,75	0
3	PEG	A	292	7/7	0.83	0.14	31,44,56,67	0
2	PG4	A	291	13/13	0.85	0.13	26,38,59,60	0
3	PEG	A	297	7/7	0.86	0.17	43,53,67,74	0
3	PEG	A	302	7/7	0.88	0.13	44,56,68,80	0
5	ACT	A	296	4/4	0.88	0.16	27,33,39,43	0
3	PEG	B	296	7/7	0.88	0.23	46,65,79,94	0
3	PEG	A	303	7/7	0.90	0.21	28,43,58,58	0
3	PEG	A	299	7/7	0.90	0.21	43,53,67,70	0
3	PEG	B	293	7/7	0.90	0.13	23,49,66,67	0
3	PEG	B	299	7/7	0.90	0.13	40,56,67,72	0
3	PEG	A	300	7/7	0.90	0.17	47,56,79,90	0
3	PEG	A	307	7/7	0.90	0.25	15,66,95,95	0
3	PEG	A	301	7/7	0.91	0.17	32,48,58,62	0
3	PEG	B	291	7/7	0.93	0.10	35,55,66,67	0
3	PEG	A	304	7/7	0.95	0.14	24,42,62,67	0
4	NA	A	293	1/1	0.96	0.16	27,27,27,27	0
7	CL	B	292	1/1	0.99	0.08	21,21,21,21	0

6.5 Other polymers

There are no such residues in this entry.