



# wwPDB X-ray Structure Validation Summary Report ⓘ

May 15, 2020 – 08:24 pm BST

PDB ID : 6C80  
Title : Crystal structure of a flax cytokinin oxidase  
Authors : Wan, L.; Williams, S.; Kobe, B.  
Deposited on : 2018-01-23  
Resolution : 1.78 Å(reported)

This is a wwPDB X-ray Structure Validation Summary Report for a publicly released PDB entry.

We welcome your comments at [validation@mail.wwpdb.org](mailto:validation@mail.wwpdb.org)

A user guide is available at

<https://www.wwpdb.org/validation/2017/XrayValidationReportHelp>

with specific help available everywhere you see the ⓘ symbol.

---

The following versions of software and data (see [references ⓘ](#)) were used in the production of this report:

MolProbity : 4.02b-467  
Mogul : 1.8.5 (274361), CSD as541be (2020)  
Xtriage (Phenix) : 1.13  
EDS : 2.11  
buster-report : 1.1.7 (2018)  
Percentile statistics : 20191225.v01 (using entries in the PDB archive December 25th 2019)  
Refmac : 5.8.0158  
CCP4 : 7.0.044 (Gargrove)  
Ideal geometry (proteins) : Engh & Huber (2001)  
Ideal geometry (DNA, RNA) : Parkinson et al. (1996)  
Validation Pipeline (wwPDB-VP) : 2.11

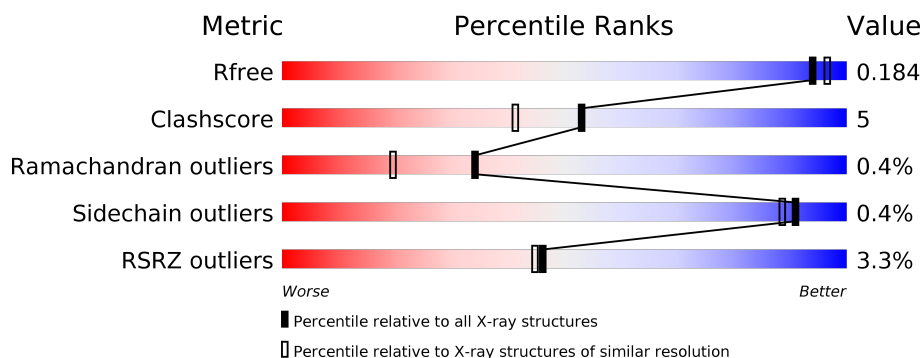
# 1 Overall quality at a glance

The following experimental techniques were used to determine the structure:

## *X-RAY DIFFRACTION*

The reported resolution of this entry is 1.78 Å.

Percentile scores (ranging between 0-100) for global validation metrics of the entry are shown in the following graphic. The table shows the number of entries on which the scores are based.



Metric	Whole archive (#Entries)	Similar resolution (#Entries, resolution range(Å))
$R_{free}$	130704	9185 (1.80-1.76)
Clashscore	141614	10184 (1.80-1.76)
Ramachandran outliers	138981	10051 (1.80-1.76)
Sidechain outliers	138945	10050 (1.80-1.76)
RSRZ outliers	127900	9032 (1.80-1.76)

The table below summarises the geometric issues observed across the polymeric chains and their fit to the electron density. The red, orange, yellow and green segments on the lower bar indicate the fraction of residues that contain outliers for  $\geq 3$ , 2, 1 and 0 types of geometric quality criteria respectively. A grey segment represents the fraction of residues that are not modelled. The numeric value for each fraction is indicated below the corresponding segment, with a dot representing fractions  $\leq 5\%$ . The upper red bar (where present) indicates the fraction of residues that have poor fit to the electron density. The numeric value is given above the bar.

Mol	Chain	Length	Quality of chain
1	A	489	<div> <div>3%</div> <div> <div></div> <div>88%</div> <div>10%</div> <div></div> </div> <div></div> </div>
1	B	489	<div> <div>3%</div> <div> <div></div> <div>88%</div> <div>11%</div> <div></div> </div> <div></div> </div>

The following table lists non-polymeric compounds, carbohydrate monomers and non-standard residues in protein, DNA, RNA chains that are outliers for geometric or electron-density-fit criteria:

Mol	Type	Chain	Res	Chirality	Geometry	Clashes	Electron density
4	GOL	A	604	-	-	X	-

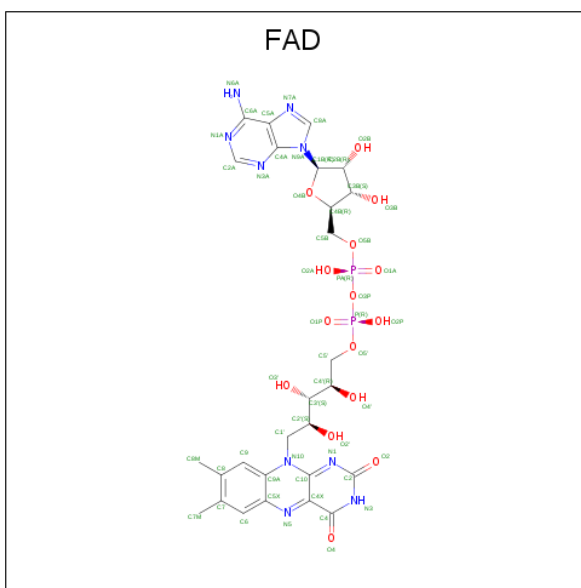


In the tables below, the ZeroOcc column contains the number of atoms modelled with zero occupancy, the AltConf column contains the number of residues with at least one atom in alternate conformation and the Trace column contains the number of residues modelled with at most 2 atoms.

- Molecule 1 is a protein called cytokinin oxidase LuCKX1.1.

Mol	Chain	Residues	Atoms					ZeroOcc	AltConf	Trace
1	A	478	Total 3759	C 2397	N 651	O 695	S 16	3	3	0
1	B	486	Total 3847	C 2451	N 668	O 710	S 18	0	9	0

- Molecule 2 is FLAVIN-ADENINE DINUCLEOTIDE (three-letter code: FAD) (formula:  $\text{C}_{27}\text{H}_{33}\text{N}_9\text{O}_{15}\text{P}_2$ ).



Mol	Chain	Residues	Atoms					ZeroOcc	AltConf
2	A	1	Total 53	C 27	N 9	O 15	P 2	0	0
2	B	1	Total 53	C 27	N 9	O 15	P 2	0	0

- Molecule 3 is DI(HYDROXYETHYL)ETHER (three-letter code: PEG) (formula:  $C_4H_{10}O_3$ ).



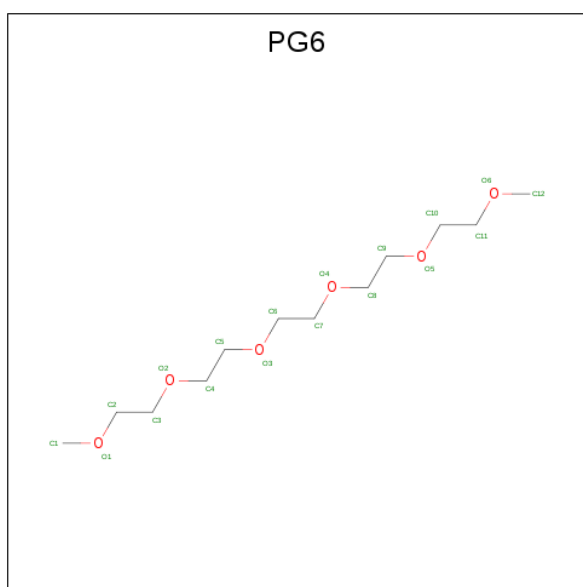
Mol	Chain	Residues	Atoms			ZeroOcc	AltConf
3	A	1	Total	C	O	0	0
			7	4	3		
3	B	1	Total	C	O	0	0
			7	4	3		
3	B	1	Total	C	O	0	0
			7	4	3		
3	B	1	Total	C	O	0	0
			7	4	3		

- Molecule 4 is GLYCEROL (three-letter code: GOL) (formula:  $C_3H_8O_3$ ).



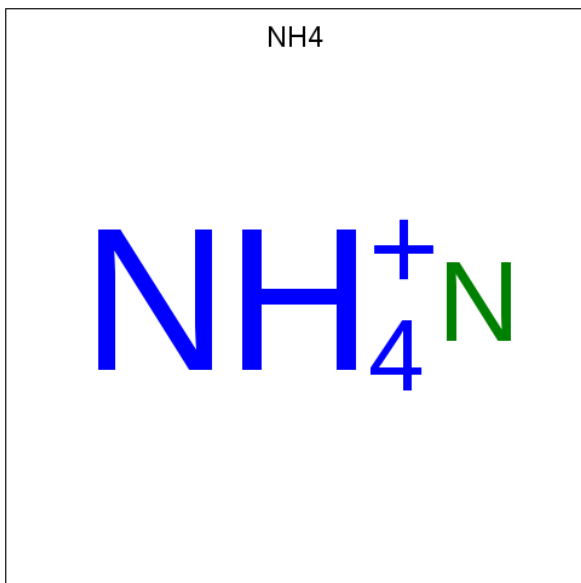
Mol	Chain	Residues	Atoms	ZeroOcc	AltConf
4	A	1	Total C O 6 3 3	0	0
4	A	1	Total C O 6 3 3	0	0
4	A	1	Total C O 6 3 3	0	0
4	A	1	Total C O 6 3 3	0	0
4	B	1	Total C O 6 3 3	0	0
4	B	1	Total C O 6 3 3	0	0
4	B	1	Total C O 6 3 3	0	0
4	B	1	Total C O 6 3 3	0	0
4	B	1	Total C O 6 3 3	0	0
4	B	1	Total C O 6 3 3	0	0
4	B	1	Total C O 6 3 3	0	0

- Molecule 5 is 1-(2-METHOXY-ETHOXY)-2-{2-[2-(2-METHOXY-ETHOXY)-ETHOXY]-ETHANE (three-letter code: PG6) (formula: C<sub>12</sub>H<sub>26</sub>O<sub>6</sub>).



Mol	Chain	Residues	Atoms			ZeroOcc	AltConf
5	A	1	Total	C	O	0	0
			18	12	6		

- Molecule 6 is AMMONIUM ION (three-letter code: NH4) (formula: H<sub>4</sub>N).



Mol	Chain	Residues	Atoms			ZeroOcc	AltConf
6	A	1	Total	H	N	0	0
			5	4	1		
6	B	1	Total	H	N	0	0
			5	4	1		

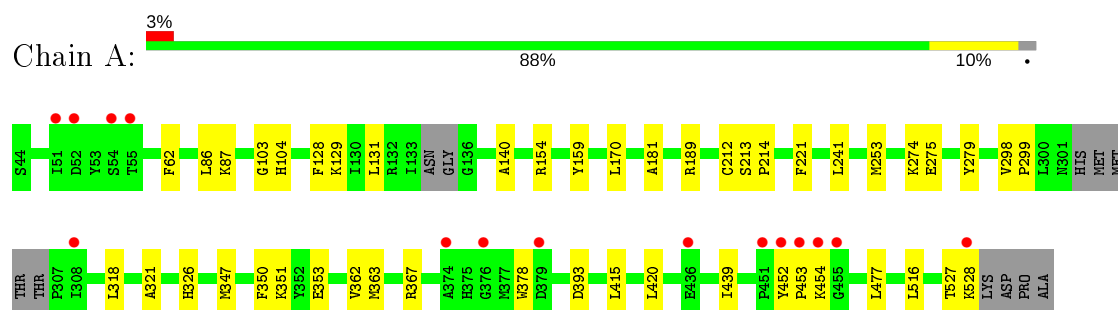
- Molecule 7 is water.

Mol	Chain	Residues	Atoms		ZeroOcc	AltConf
7	A	293	Total	O	0	0
			293	293		
7	B	286	Total	O	0	0
			286	286		

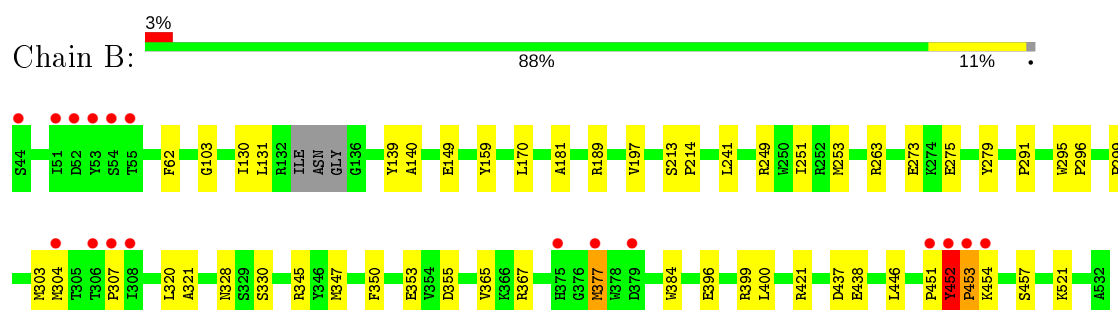
### 3 Residue-property plots [i](#)

These plots are drawn for all protein, RNA and DNA chains in the entry. The first graphic for a chain summarises the proportions of the various outlier classes displayed in the second graphic. The second graphic shows the sequence view annotated by issues in geometry and electron density. Residues are color-coded according to the number of geometric quality criteria for which they contain at least one outlier: green = 0, yellow = 1, orange = 2 and red = 3 or more. A red dot above a residue indicates a poor fit to the electron density ( $RSRZ > 2$ ). Stretches of 2 or more consecutive residues without any outlier are shown as a green connector. Residues present in the sample, but not in the model, are shown in grey.

- Molecule 1: cytokinin oxidase LuCKX1.1



- Molecule 1: cytokinin oxidase LuCKX1.1





## 4 Data and refinement statistics

Property	Value	Source
Space group	I 1 2 1	Depositor
Cell constants a, b, c, $\alpha$ , $\beta$ , $\gamma$	91.23 Å   58.93 Å   188.87 Å 90.00°   95.62°   90.00°	Depositor
Resolution (Å)	49.35 – 1.78 85.08 – 1.78	Depositor EDS
% Data completeness (in resolution range)	99.7 (49.35-1.78) 99.7 (85.08-1.78)	Depositor EDS
$R_{merge}$	(Not available)	Depositor
$R_{sym}$	(Not available)	Depositor
$\langle I/\sigma(I) \rangle$ <sup>1</sup>	2.14 (at 1.78 Å)	Xtriage
Refinement program	PHENIX 1.8.4_1496	Depositor
R, $R_{free}$	0.151   ,   0.184 0.152   ,   0.184	Depositor DCC
$R_{free}$ test set	4796 reflections (5.01%)	wwPDB-VP
Wilson B-factor (Å <sup>2</sup> )	17.6	Xtriage
Anisotropy	0.051	Xtriage
Bulk solvent $k_{sol}$ (e/Å <sup>3</sup> ), $B_{sol}$ (Å <sup>2</sup> )	0.39 , 54.2	EDS
L-test for twinning <sup>2</sup>	$\langle  L  \rangle = 0.49$ , $\langle L^2 \rangle = 0.32$	Xtriage
Estimated twinning fraction	No twinning to report.	Xtriage
$F_o, F_c$ correlation	0.97	EDS
Total number of atoms	8413	wwPDB-VP
Average B, all atoms (Å <sup>2</sup> )	23.0	wwPDB-VP

Xtriage's analysis on translational NCS is as follows: *The largest off-origin peak in the Patterson function is 4.98% of the height of the origin peak. No significant pseudotranslation is detected.*

<sup>1</sup>Intensities estimated from amplitudes.

<sup>2</sup>Theoretical values of  $\langle |L| \rangle$ ,  $\langle L^2 \rangle$  for acentric reflections are 0.5, 0.333 respectively for untwinned datasets, and 0.375, 0.2 for perfectly twinned datasets.

## 5 Model quality [i](#)

### 5.1 Standard geometry [i](#)

Bond lengths and bond angles in the following residue types are not validated in this section: PG6, GOL, PEG, FAD, NH4

The Z score for a bond length (or angle) is the number of standard deviations the observed value is removed from the expected value. A bond length (or angle) with  $|Z| > 5$  is considered an outlier worth inspection. RMSZ is the root-mean-square of all Z scores of the bond lengths (or angles).

Mol	Chain	Bond lengths		Bond angles	
		RMSZ	$\# Z  > 5$	RMSZ	$\# Z  > 5$
1	A	0.36	0/3868	0.52	0/5242
1	B	0.37	0/3974	0.52	0/5387
All	All	0.36	0/7842	0.52	0/10629

Chiral center outliers are detected by calculating the chiral volume of a chiral center and verifying if the center is modelled as a planar moiety or with the opposite hand. A planarity outlier is detected by checking planarity of atoms in a peptide group, atoms in a mainchain group or atoms of a sidechain that are expected to be planar.

Mol	Chain	#Chirality outliers	#Planarity outliers
1	B	0	1

There are no bond length outliers.

There are no bond angle outliers.

There are no chirality outliers.

All (1) planarity outliers are listed below:

Mol	Chain	Res	Type	Group
1	B	452	TYR	Peptide

### 5.2 Too-close contacts [i](#)

In the following table, the Non-H and H(model) columns list the number of non-hydrogen atoms and hydrogen atoms in the chain respectively. The H(added) column lists the number of hydrogen atoms added and optimized by MolProbity. The Clashes column lists the number of clashes within the asymmetric unit, whereas Symm-Clashes lists symmetry related clashes.

Mol	Chain	Non-H	H(model)	H(added)	Clashes	Symm-Clashes
1	A	3759	0	3677	37	0
1	B	3847	0	3773	41	0
2	A	53	0	29	2	0
2	B	53	0	29	1	0
3	A	7	0	10	0	0
3	B	21	0	30	2	0
4	A	24	0	32	8	0
4	B	42	0	56	3	0
5	A	18	0	26	4	0
6	A	1	4	0	0	0
6	B	1	4	0	0	0
7	A	293	0	0	11	0
7	B	286	0	0	6	0
All	All	8405	8	7662	84	0

The all-atom clashscore is defined as the number of clashes found per 1000 atoms (including hydrogen atoms). The all-atom clashscore for this structure is 5.

The worst 5 of 84 close contacts within the same asymmetric unit are listed below, sorted by their clash magnitude.

Atom-1	Atom-2	Interatomic distance (Å)	Clash overlap (Å)
1:A:527:THR:HG22	1:A:528:LYS:HG3	1.43	0.98
1:B:189:ARG:NH1	7:B:701:HOH:O	1.99	0.94
1:B:377:MET:HE1	1:B:451:PRO:HD3	1.65	0.78
1:A:104:HIS:NE2	4:A:604:GOL:H11	1.99	0.77
1:B:189:ARG:NH1	1:B:273:GLU:HG2	2.00	0.75

There are no symmetry-related clashes.

## 5.3 Torsion angles ⓘ

### 5.3.1 Protein backbone ⓘ

In the following table, the Percentiles column shows the percent Ramachandran outliers of the chain as a percentile score with respect to all X-ray entries followed by that with respect to entries of similar resolution.

The Analysed column shows the number of residues for which the backbone conformation was analysed, and the total number of residues.

Mol	Chain	Analysed	Favoured	Allowed	Outliers	Percentiles	
1	A	476/489 (97%)	459 (96%)	16 (3%)	1 (0%)	47	32
1	B	491/489 (100%)	474 (96%)	14 (3%)	3 (1%)	25	11
All	All	967/978 (99%)	933 (96%)	30 (3%)	4 (0%)	34	19

All (4) Ramachandran outliers are listed below:

Mol	Chain	Res	Type
1	B	453	PRO
1	A	181	ALA
1	B	181	ALA
1	B	452	TYR

### 5.3.2 Protein sidechains ⓘ

In the following table, the Percentiles column shows the percent sidechain outliers of the chain as a percentile score with respect to all X-ray entries followed by that with respect to entries of similar resolution.

The Analysed column shows the number of residues for which the sidechain conformation was analysed, and the total number of residues.

Mol	Chain	Analysed	Rotameric	Outliers	Percentiles	
1	A	406/411 (99%)	404 (100%)	2 (0%)	88	86
1	B	417/411 (102%)	416 (100%)	1 (0%)	93	91
All	All	823/822 (100%)	820 (100%)	3 (0%)	91	88

All (3) residues with a non-rotameric sidechain are listed below:

Mol	Chain	Res	Type
1	A	131	LEU
1	A	159	TYR
1	B	377	MET

Some sidechains can be flipped to improve hydrogen bonding and reduce clashes. 5 of 6 such sidechains are listed below:

Mol	Chain	Res	Type
1	B	302	HIS
1	B	474	GLN
1	B	464	GLN
1	A	490	HIS

*Continued on next page...*

*Continued from previous page...*

Mol	Chain	Res	Type
1	B	470	GLN

### 5.3.3 RNA ⓘ

There are no RNA molecules in this entry.

## 5.4 Non-standard residues in protein, DNA, RNA chains ⓘ

There are no non-standard protein/DNA/RNA residues in this entry.

## 5.5 Carbohydrates ⓘ

There are no carbohydrates in this entry.

## 5.6 Ligand geometry ⓘ

Of 20 ligands modelled in this entry, 2 are modelled with single atom - leaving 18 for Mogul analysis.

In the following table, the Counts columns list the number of bonds (or angles) for which Mogul statistics could be retrieved, the number of bonds (or angles) that are observed in the model and the number of bonds (or angles) that are defined in the Chemical Component Dictionary. The Link column lists molecule types, if any, to which the group is linked. The Z score for a bond length (or angle) is the number of standard deviations the observed value is removed from the expected value. A bond length (or angle) with  $|Z| > 2$  is considered an outlier worth inspection. RMSZ is the root-mean-square of all Z scores of the bond lengths (or angles).

Mol	Type	Chain	Res	Link	Bond lengths			Bond angles		
					Counts	RMSZ	$\# Z  > 2$	Counts	RMSZ	$\# Z  > 2$
4	GOL	B	610	-	5,5,5	0.34	0	5,5,5	0.61	0
3	PEG	B	603	-	6,6,6	0.57	0	5,5,5	0.23	0
2	FAD	B	601	1	51,58,58	2.79	17 (33%)	60,89,89	2.17	9 (15%)
4	GOL	A	605	-	5,5,5	0.39	0	5,5,5	0.57	0
3	PEG	B	604	-	6,6,6	0.57	0	5,5,5	0.25	0
4	GOL	A	604	-	5,5,5	0.37	0	5,5,5	0.65	0
2	FAD	A	601	1	51,58,58	2.78	18 (35%)	60,89,89	2.09	13 (21%)
4	GOL	B	605	-	5,5,5	0.37	0	5,5,5	0.41	0
4	GOL	B	608	-	5,5,5	0.40	0	5,5,5	0.36	0
4	GOL	B	606	-	5,5,5	0.32	0	5,5,5	0.37	0
3	PEG	A	602	-	6,6,6	0.60	0	5,5,5	0.17	0

Mol	Type	Chain	Res	Link	Bond lengths			Bond angles		
					Counts	RMSZ	# Z  > 2	Counts	RMSZ	# Z  > 2
5	PG6	A	607	-	17,17,17	0.75	0	16,16,16	0.47	0
4	GOL	A	606	-	5,5,5	0.30	0	5,5,5	0.30	0
4	GOL	B	611	-	5,5,5	0.35	0	5,5,5	0.34	0
4	GOL	B	609	-	5,5,5	0.37	0	5,5,5	0.32	0
4	GOL	B	607	-	5,5,5	0.41	0	5,5,5	0.47	0
4	GOL	A	603	-	5,5,5	0.35	0	5,5,5	0.40	0
3	PEG	B	602	-	6,6,6	0.59	0	5,5,5	0.24	0

In the following table, the Chirals column lists the number of chiral outliers, the number of chiral centers analysed, the number of these observed in the model and the number defined in the Chemical Component Dictionary. Similar counts are reported in the Torsion and Rings columns. '-' means no outliers of that kind were identified.

Mol	Type	Chain	Res	Link	Chirals	Torsions	Rings
4	GOL	B	610	-	-	0/4/4/4	-
3	PEG	B	603	-	-	2/4/4/4	-
2	FAD	B	601	1	-	1/30/50/50	0/6/6/6
4	GOL	A	605	-	-	3/4/4/4	-
3	PEG	B	604	-	-	2/4/4/4	-
4	GOL	A	604	-	-	2/4/4/4	-
2	FAD	A	601	1	-	1/30/50/50	0/6/6/6
4	GOL	B	605	-	-	2/4/4/4	-
4	GOL	B	608	-	-	2/4/4/4	-
4	GOL	B	606	-	-	2/4/4/4	-
3	PEG	A	602	-	-	0/4/4/4	-
5	PG6	A	607	-	-	6/15/15/15	-
4	GOL	A	606	-	-	0/4/4/4	-
4	GOL	B	611	-	-	2/4/4/4	-
4	GOL	B	609	-	-	2/4/4/4	-
4	GOL	B	607	-	-	2/4/4/4	-
4	GOL	A	603	-	-	0/4/4/4	-
3	PEG	B	602	-	-	2/4/4/4	-

The worst 5 of 35 bond length outliers are listed below:

Mol	Chain	Res	Type	Atoms	Z	Observed(Å)	Ideal(Å)
2	B	601	FAD	C4X-C10	11.88	1.50	1.38
2	A	601	FAD	C4X-C10	11.82	1.50	1.38
2	A	601	FAD	C5X-N5	8.21	1.48	1.35
2	B	601	FAD	C5X-N5	8.02	1.48	1.35

*Continued on next page...*

*Continued from previous page...*

Mol	Chain	Res	Type	Atoms	Z	Observed(Å)	Ideal(Å)
2	A	601	FAD	C2B-C1B	-5.39	1.45	1.53

The worst 5 of 22 bond angle outliers are listed below:

Mol	Chain	Res	Type	Atoms	Z	Observed(°)	Ideal(°)
2	B	601	FAD	C4-N3-C2	11.17	124.57	115.14
2	A	601	FAD	C4-N3-C2	10.84	124.30	115.14
2	B	601	FAD	N3A-C2A-N1A	-5.85	119.54	128.68
2	A	601	FAD	N3A-C2A-N1A	-5.85	119.54	128.68
2	B	601	FAD	C1'-N10-C9A	4.88	122.13	118.29

There are no chirality outliers.

5 of 31 torsion outliers are listed below:

Mol	Chain	Res	Type	Atoms
4	A	605	GOL	O1-C1-C2-C3
4	A	604	GOL	C1-C2-C3-O3
4	B	605	GOL	O1-C1-C2-C3
4	B	608	GOL	O1-C1-C2-C3
4	B	609	GOL	O1-C1-C2-C3

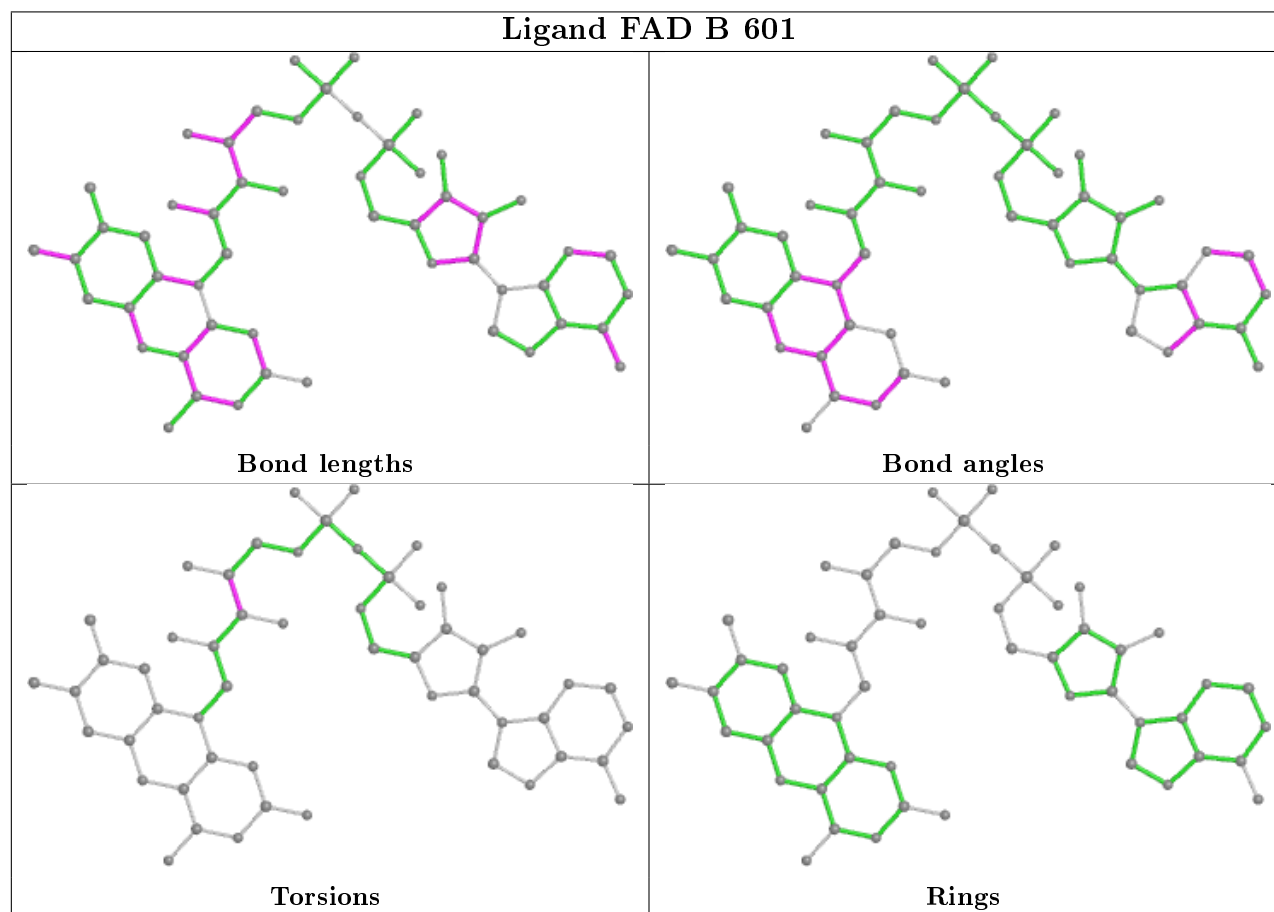
There are no ring outliers.

8 monomers are involved in 19 short contacts:

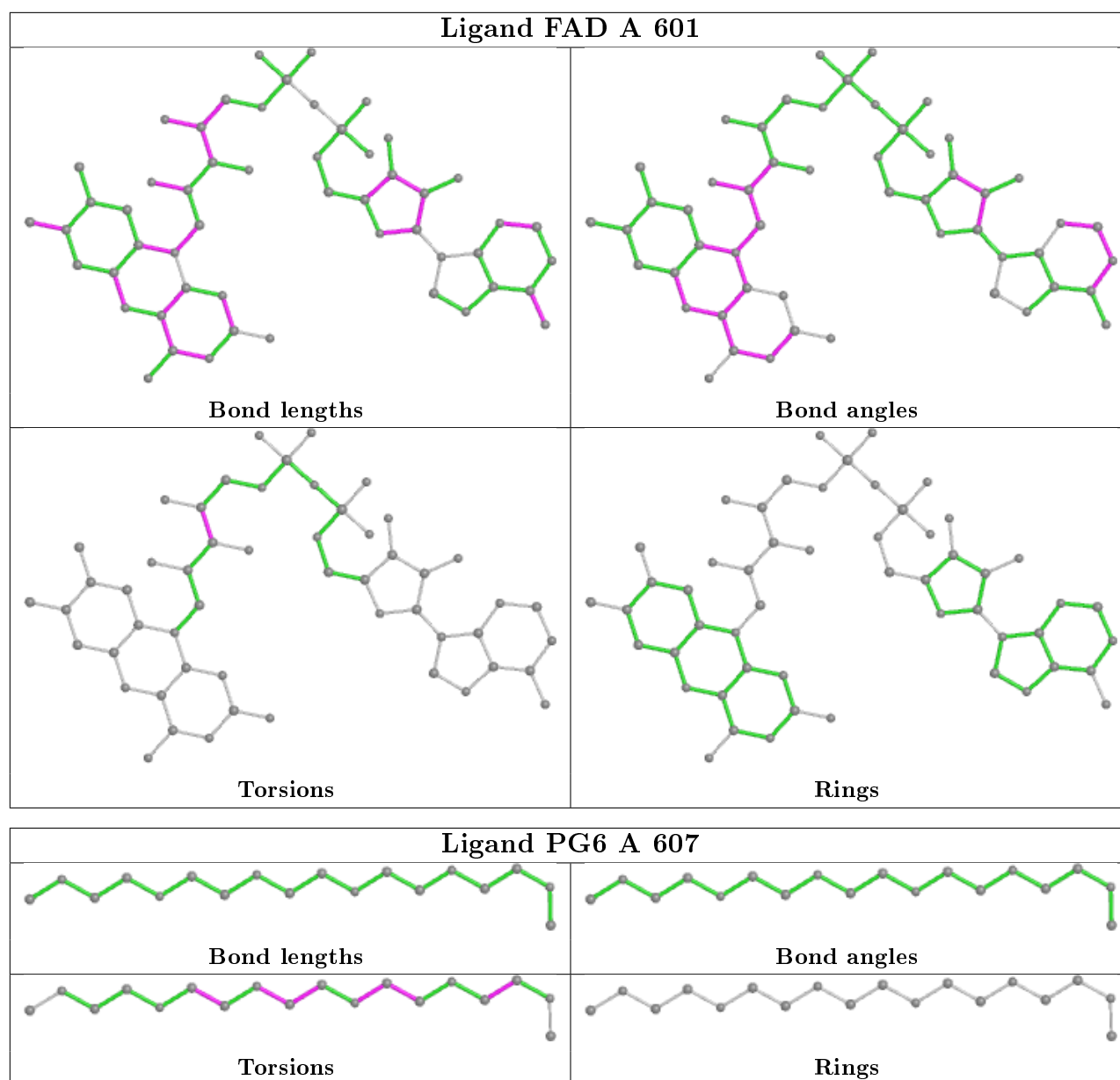
Mol	Chain	Res	Type	Clashes	Symm-Clashes
2	B	601	FAD	1	0
4	A	605	GOL	1	0
3	B	604	PEG	2	0
4	A	604	GOL	7	0
2	A	601	FAD	2	0
4	B	608	GOL	2	0
5	A	607	PG6	4	0
4	B	611	GOL	1	0

The following is a two-dimensional graphical depiction of Mogul quality analysis of bond lengths, bond angles, torsion angles, and ring geometry for all instances of the Ligand of Interest. In addition, ligands with molecular weight > 250 and outliers as shown on the validation Tables will also be included. For torsion angles, if less than 5% of the Mogul distribution of torsion angles is within 10 degrees of the torsion angle in question, then that torsion angle is considered an outlier. Any bond that is central to one or more torsion angles identified as an outlier by Mogul will be highlighted in the graph. For rings, the root-mean-square deviation (RMSD) between the ring in question and similar rings identified by Mogul is calculated over all ring torsion angles. If the

average RMSD is greater than 60 degrees and the minimal RMSD between the ring in question and any Mogul-identified rings is also greater than 60 degrees, then that ring is considered an outlier. The outliers are highlighted in purple. The color gray indicates Mogul did not find sufficient equivalents in the CSD to analyse the geometry.







## 5.7 Other polymers [i](#)

There are no such residues in this entry.

## 5.8 Polymer linkage issues [i](#)

There are no chain breaks in this entry.

## 6 Fit of model and data [i](#)

### 6.1 Protein, DNA and RNA chains [i](#)

In the following table, the column labelled ‘#RSRZ> 2’ contains the number (and percentage) of RSRZ outliers, followed by percent RSRZ outliers for the chain as percentile scores relative to all X-ray entries and entries of similar resolution. The OWAB column contains the minimum, median, 95<sup>th</sup> percentile and maximum values of the occupancy-weighted average B-factor per residue. The column labelled ‘Q< 0.9’ lists the number of (and percentage) of residues with an average occupancy less than 0.9.

Mol	Chain	Analysed	<RSRZ>	#RSRZ>2	OWAB(Å <sup>2</sup> )	Q<0.9
1	A	478/489 (97%)	-0.11	15 (3%) 49 47	10, 19, 44, 70	0
1	B	486/489 (99%)	-0.04	17 (3%) 44 42	11, 19, 47, 98	0
All	All	964/978 (98%)	-0.08	32 (3%) 46 45	10, 19, 46, 98	0

The worst 5 of 32 RSRZ outliers are listed below:

Mol	Chain	Res	Type	RSRZ
1	B	304	MET	9.2
1	B	452	TYR	7.1
1	B	453	PRO	5.6
1	B	52	ASP	5.3
1	A	452	TYR	5.2

### 6.2 Non-standard residues in protein, DNA, RNA chains [i](#)

There are no non-standard protein/DNA/RNA residues in this entry.

### 6.3 Carbohydrates [i](#)

There are no carbohydrates in this entry.

### 6.4 Ligands [i](#)

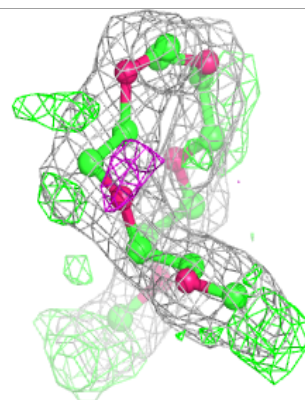
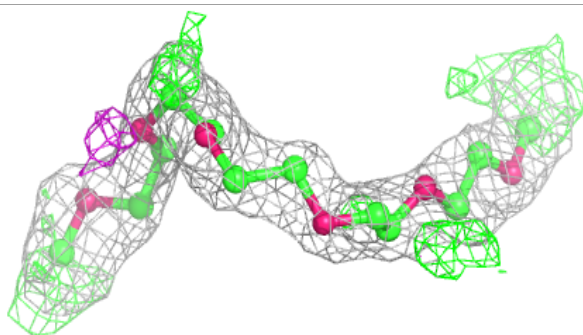
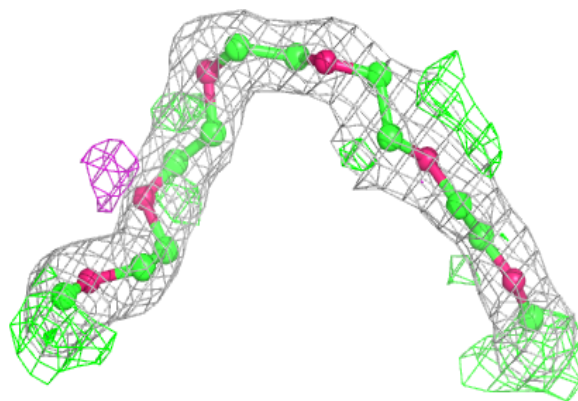
In the following table, the Atoms column lists the number of modelled atoms in the group and the number defined in the chemical component dictionary. The B-factors column lists the minimum, median, 95<sup>th</sup> percentile and maximum values of B factors of atoms in the group. The column labelled ‘Q< 0.9’ lists the number of atoms with occupancy less than 0.9.

Mol	Type	Chain	Res	Atoms	RSCC	RSR	B-factors( $\text{\AA}^2$ )	Q<0.9
3	PEG	B	604	7/7	0.63	0.27	58,60,70,70	0
4	GOL	B	607	6/6	0.64	0.22	42,47,54,56	0
4	GOL	B	605	6/6	0.69	0.15	45,51,55,56	0
4	GOL	A	603	6/6	0.74	0.17	36,39,44,49	0
3	PEG	B	602	7/7	0.77	0.12	48,51,53,54	0
5	PG6	A	607	18/18	0.81	0.15	25,40,49,54	0
6	NH4	A	608	1/1	0.81	0.57	55,66,66,66	0
3	PEG	B	603	7/7	0.87	0.11	46,47,51,54	0
6	NH4	B	612	1/1	0.87	0.62	58,70,70,70	0
4	GOL	A	604	6/6	0.89	0.18	20,41,42,43	0
3	PEG	A	602	7/7	0.89	0.15	37,53,55,57	0
4	GOL	B	609	6/6	0.90	0.13	46,51,54,60	0
4	GOL	B	610	6/6	0.90	0.16	21,41,48,49	0
4	GOL	B	608	6/6	0.91	0.21	28,53,54,57	0
4	GOL	A	605	6/6	0.92	0.12	21,37,42,51	0
4	GOL	B	606	6/6	0.92	0.14	20,40,43,45	0
4	GOL	B	611	6/6	0.92	0.12	25,28,40,42	0
4	GOL	A	606	6/6	0.96	0.10	18,22,36,41	0
2	FAD	A	601	53/53	0.98	0.08	10,12,15,15	0
2	FAD	B	601	53/53	0.98	0.07	8,12,15,15	0

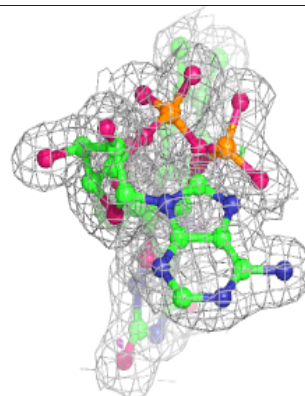
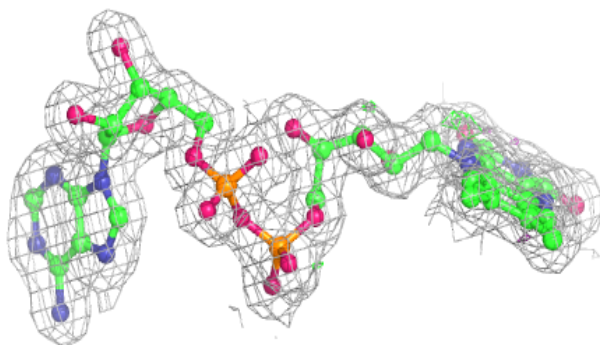
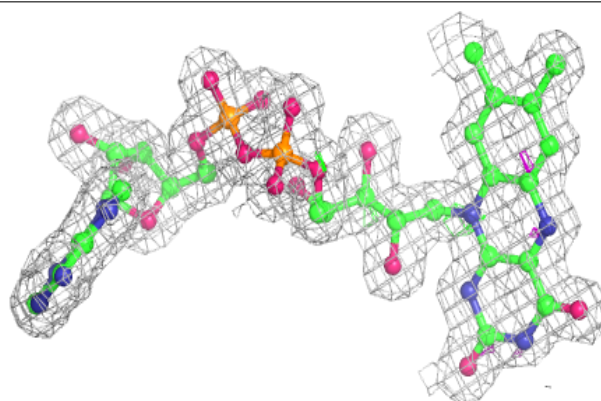
The following is a graphical depiction of the model fit to experimental electron density of all instances of the Ligand of Interest. In addition, ligands with molecular weight > 250 and outliers as shown on the geometry validation Tables will also be included. Each fit is shown from different orientation to approximate a three-dimensional view.

**Electron density around PG6 A 607:**

$2mF_o-DF_c$  (at 0.7 rmsd) in gray  
 $mF_o-DF_c$  (at 3 rmsd) in purple (negative)  
and green (positive)

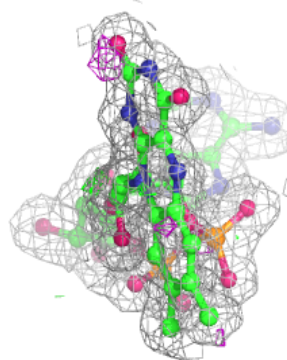
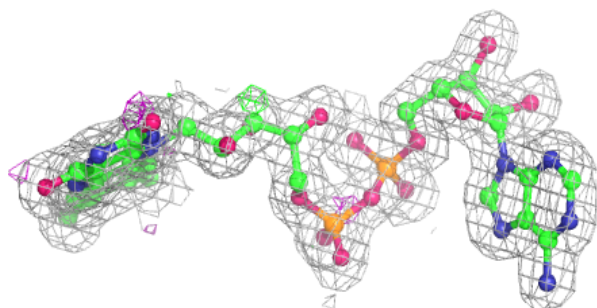
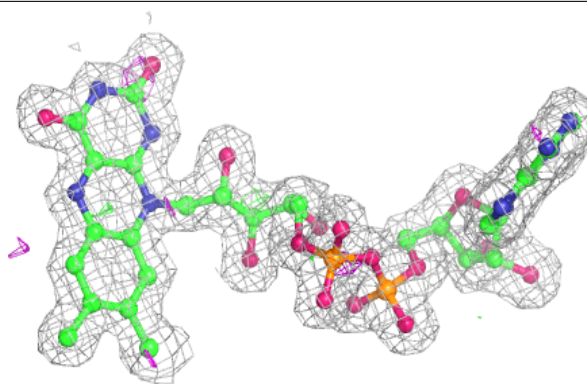
**Electron density around FAD A 601:**

$2mF_o-DF_c$  (at 0.7 rmsd) in gray  
 $mF_o-DF_c$  (at 3 rmsd) in purple (negative)  
and green (positive)



**Electron density around FAD B 601:**

$2mF_o-DF_c$  (at 0.7 rmsd) in gray  
 $mF_o-DF_c$  (at 3 rmsd) in purple (negative)  
and green (positive)



## 6.5 Other polymers [i](#)

There are no such residues in this entry.