



# Full wwPDB X-ray Structure Validation Report ⓘ

May 25, 2020 – 07:57 am BST

PDB ID : 2C94  
Title : LUMAZINE SYNTHASE FROM MYCOBACTERIUM TUBERCULOSIS  
BOUND TO 3-(1,3,7- TRIHYDRO-9-D-RIBITYL-2,6,8-PURINETRION  
E-7-YL) 1,1 difluoropentane-1- PHOSPHATE  
Authors : Morgunova, E.; Illarionov, B.; Jin, G.; Haase, I.; Fischer, M.; Cushman, M.;  
Bacher, A.; Ladenstein, R.  
Deposited on : 2005-12-09  
Resolution : 1.90 Å(reported)

This is a Full wwPDB X-ray Structure Validation Report for a publicly released PDB entry.

We welcome your comments at [validation@mail.wwpdb.org](mailto:validation@mail.wwpdb.org)

A user guide is available at

<https://www.wwpdb.org/validation/2017/XrayValidationReportHelp>

with specific help available everywhere you see the ⓘ symbol.

---

The following versions of software and data (see [references ⓘ](#)) were used in the production of this report:

MolProbity : 4.02b-467  
Mogul : 1.8.5 (274361), CSD as541be (2020)  
Xtriage (Phenix) : 1.13  
EDS : 2.11  
buster-report : 1.1.7 (2018)  
Percentile statistics : 20191225.v01 (using entries in the PDB archive December 25th 2019)  
Refmac : 5.8.0158  
CCP4 : 7.0.044 (Gargrove)  
Ideal geometry (proteins) : Engh & Huber (2001)  
Ideal geometry (DNA, RNA) : Parkinson et al. (1996)  
Validation Pipeline (wwPDB-VP) : 2.11

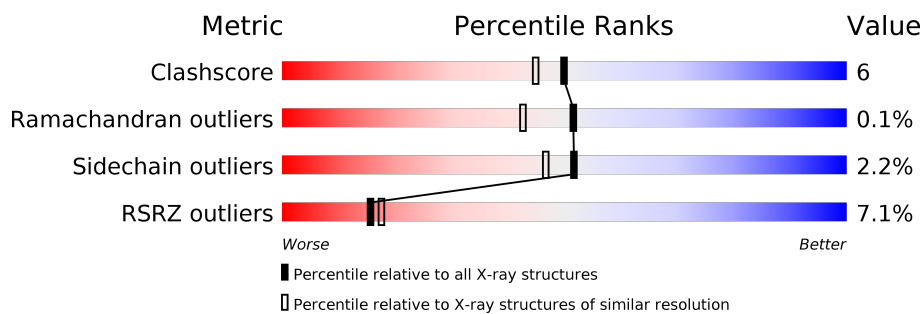
# 1 Overall quality at a glance

The following experimental techniques were used to determine the structure:

*X-RAY DIFFRACTION*

The reported resolution of this entry is 1.90 Å.

Percentile scores (ranging between 0-100) for global validation metrics of the entry are shown in the following graphic. The table shows the number of entries on which the scores are based.



Metric	Whole archive (#Entries)	Similar resolution (#Entries, resolution range(Å))
Clashscore	141614	6847 (1.90-1.90)
Ramachandran outliers	138981	6760 (1.90-1.90)
Sidechain outliers	138945	6760 (1.90-1.90)
RSRZ outliers	127900	6082 (1.90-1.90)

The table below summarises the geometric issues observed across the polymeric chains and their fit to the electron density. The red, orange, yellow and green segments on the lower bar indicate the fraction of residues that contain outliers for  $\geq 3$ , 2, 1 and 0 types of geometric quality criteria respectively. A grey segment represents the fraction of residues that are not modelled. The numeric value for each fraction is indicated below the corresponding segment, with a dot representing fractions  $\leq 5\%$ . The upper red bar (where present) indicates the fraction of residues that have poor fit to the electron density. The numeric value is given above the bar.

Mol	Chain	Length	Quality of chain
1	A	160	<div> <div>3%</div> <div>81% 8% • 9%</div> </div>
1	B	160	<div> <div>5%</div> <div>79% 11% •• 9%</div> </div>
1	C	160	<div> <div>9%</div> <div>82% 9% • 9%</div> </div>
1	D	160	<div> <div>8%</div> <div>83% 8% • 9%</div> </div>
1	E	160	<div> <div>8%</div> <div>82% 8% •• 9%</div> </div>

2 Entry composition ⓘ

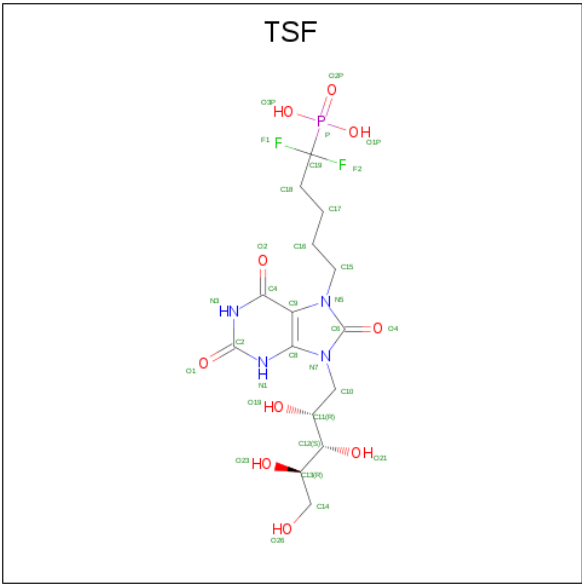
There are 4 unique types of molecules in this entry. The entry contains 5995 atoms, of which 0 are hydrogens and 0 are deuteriums.

In the tables below, the ZeroOcc column contains the number of atoms modelled with zero occupancy, the AltConf column contains the number of residues with at least one atom in alternate conformation and the Trace column contains the number of residues modelled with at most 2 atoms.

- Molecule 1 is a protein called 6,7-DIMETHYL-8-RIBITYLLUMAZINE SYNTHASE.

Mol	Chain	Residues	Atoms					ZeroOcc	AltConf	Trace
1	A	146	Total	C	N	O	S	0	0	0
			1054	651	193	207	3			
1	B	146	Total	C	N	O	S	0	0	0
			1054	651	193	207	3			
1	C	146	Total	C	N	O	S	0	0	0
			1054	651	193	207	3			
1	D	146	Total	C	N	O	S	0	0	0
			1054	651	193	207	3			
1	E	146	Total	C	N	O	S	0	0	0
			1053	650	193	207	3			

- Molecule 2 is 3-(1,3,7-TRIHYDRO-9-D-RIBITYL-2,6,8-PURINETRIONE-7-YL) 1,1 DIFLUOROPENTANE-1-PHOSPHATE (three-letter code: TSF) (formula: C<sub>15</sub>H<sub>23</sub>F<sub>2</sub>N<sub>4</sub>O<sub>10</sub>P).



*Continued from previous page...*

Mol	Chain	Residues	Atoms						ZeroOcc	AltConf
2	B	1	Total	C	F	N	O	P	0	0
			32	15	2	4	10	1		
2	C	1	Total	C	F	N	O	P	0	0
			32	15	2	4	10	1		
2	D	1	Total	C	F	N	O	P	0	0
			32	15	2	4	10	1		
2	E	1	Total	C	F	N	O	P	0	0
			32	15	2	4	10	1		

- Molecule 3 is POTASSIUM ION (three-letter code: K) (formula: K).

Mol	Chain	Residues	Atoms		ZeroOcc	AltConf
3	B	4	Total	K	0	0
			4	4		
3	A	4	Total	K	0	0
			4	4		
3	D	4	Total	K	0	0
			4	4		
3	C	2	Total	K	0	0
			2	2		
3	E	3	Total	K	0	0
			3	3		

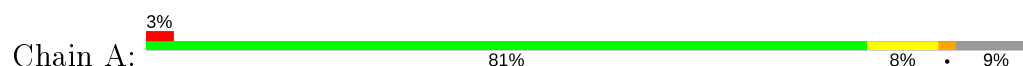
- Molecule 4 is water.

Mol	Chain	Residues	Atoms		ZeroOcc	AltConf
4	A	117	Total	O	0	0
			117	117		
4	B	110	Total	O	0	0
			110	110		
4	C	85	Total	O	0	0
			85	85		
4	D	120	Total	O	0	0
			120	120		
4	E	117	Total	O	0	0
			117	117		

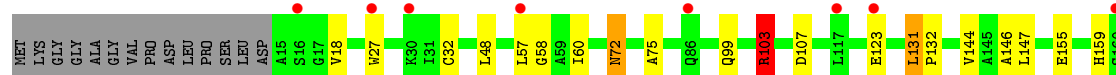
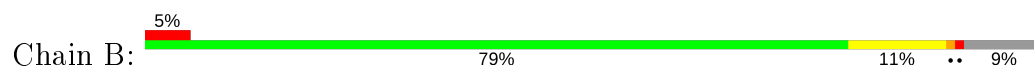
### 3 Residue-property plots [i](#)

These plots are drawn for all protein, RNA and DNA chains in the entry. The first graphic for a chain summarises the proportions of the various outlier classes displayed in the second graphic. The second graphic shows the sequence view annotated by issues in geometry and electron density. Residues are color-coded according to the number of geometric quality criteria for which they contain at least one outlier: green = 0, yellow = 1, orange = 2 and red = 3 or more. A red dot above a residue indicates a poor fit to the electron density ( $RSRZ > 2$ ). Stretches of 2 or more consecutive residues without any outlier are shown as a green connector. Residues present in the sample, but not in the model, are shown in grey.

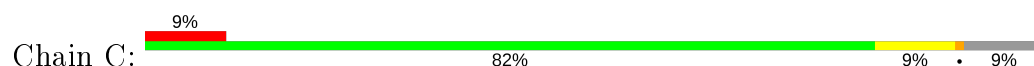
- Molecule 1: 6,7-DIMETHYL-8-RIBITYLLUMAZINE SYNTHASE



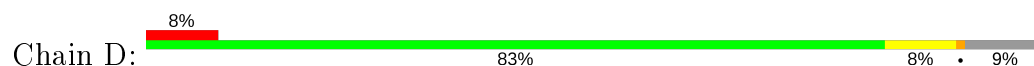
- Molecule 1: 6,7-DIMETHYL-8-RIBITYLLUMAZINE SYNTHASE



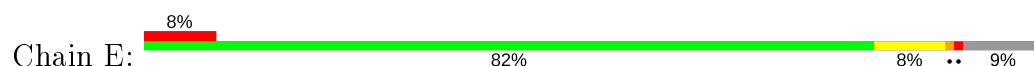
- Molecule 1: 6,7-DIMETHYL-8-RIBITYLLUMAZINE SYNTHASE



- Molecule 1: 6,7-DIMETHYL-8-RIBITYLLUMAZINE SYNTHASE



- Molecule 1: 6,7-DIMETHYL-8-RIBITYLLUMAZINE SYNTHASE



## 4 Data and refinement statistics

Property	Value	Source
Space group	C 1 2 1	Depositor
Cell constants a, b, c, $\alpha$ , $\beta$ , $\gamma$	131.38Å 81.25Å 85.88Å 90.00° 120.25° 90.00°	Depositor
Resolution (Å)	15.00 – 1.90 19.97 – 1.90	Depositor EDS
% Data completeness (in resolution range)	95.5 (15.00-1.90) 91.0 (19.97-1.90)	Depositor EDS
$R_{merge}$	0.05	Depositor
$R_{sym}$	(Not available)	Depositor
$\langle I/\sigma(I) \rangle$ <sup>1</sup>	2.29 (at 1.90Å)	Xtriage
Refinement program	REFMAC 5.2.0005	Depositor
R, $R_{free}$	0.175 , 0.219 0.180 , (Not available)	Depositor DCC
$R_{free}$ test set	No test flags present.	wwPDB-VP
Wilson B-factor (Å <sup>2</sup> )	23.8	Xtriage
Anisotropy	0.268	Xtriage
Bulk solvent $k_{sol}$ (e/Å <sup>3</sup> ), $B_{sol}$ (Å <sup>2</sup> )	0.42 , 53.9	EDS
L-test for twinning <sup>2</sup>	$\langle  L  \rangle = 0.49$ , $\langle L^2 \rangle = 0.33$	Xtriage
Estimated twinning fraction	No twinning to report.	Xtriage
$F_o, F_c$ correlation	0.95	EDS
Total number of atoms	5995	wwPDB-VP
Average B, all atoms (Å <sup>2</sup> )	31.0	wwPDB-VP

Xtriage's analysis on translational NCS is as follows: *The largest off-origin peak in the Patterson function is 12.46% of the height of the origin peak. No significant pseudotranslation is detected.*

<sup>1</sup>Intensities estimated from amplitudes.

<sup>2</sup>Theoretical values of  $\langle |L| \rangle$ ,  $\langle L^2 \rangle$  for acentric reflections are 0.5, 0.333 respectively for untwinned datasets, and 0.375, 0.2 for perfectly twinned datasets.

## 5 Model quality

### 5.1 Standard geometry

Bond lengths and bond angles in the following residue types are not validated in this section: TSF, K

The Z score for a bond length (or angle) is the number of standard deviations the observed value is removed from the expected value. A bond length (or angle) with  $|Z| > 5$  is considered an outlier worth inspection. RMSZ is the root-mean-square of all Z scores of the bond lengths (or angles).

Mol	Chain	Bond lengths		Bond angles	
		RMSZ	$\# Z  > 5$	RMSZ	$\# Z  > 5$
1	A	0.41	0/1066	0.78	5/1456 (0.3%)
1	B	0.41	0/1066	0.68	2/1456 (0.1%)
1	C	0.38	0/1066	0.49	0/1456
1	D	0.41	0/1066	0.56	0/1456
1	E	0.52	1/1064 (0.1%)	0.64	1/1451 (0.1%)
All	All	0.43	1/5328 (0.0%)	0.64	8/7275 (0.1%)

All (1) bond length outliers are listed below:

Mol	Chain	Res	Type	Atoms	Z	Observed(Å)	Ideal(Å)
1	E	27	TRP	CA-CB	10.24	1.76	1.53

All (8) bond angle outliers are listed below:

Mol	Chain	Res	Type	Atoms	Z	Observed(°)	Ideal(°)
1	A	28	HIS	N-CA-CB	13.81	135.46	110.60
1	A	27	TRP	CB-CA-C	-9.19	92.02	110.40
1	E	27	TRP	N-CA-CB	8.62	126.11	110.60
1	B	103	ARG	NE-CZ-NH1	7.89	124.24	120.30
1	A	27	TRP	N-CA-C	-7.54	90.65	111.00
1	B	103	ARG	NE-CZ-NH2	-6.78	116.91	120.30
1	A	27	TRP	CA-CB-CG	-6.60	101.17	113.70
1	A	19	ARG	NE-CZ-NH1	5.44	123.02	120.30

There are no chirality outliers.

There are no planarity outliers.

## 5.2 Too-close contacts ⓘ

In the following table, the Non-H and H(model) columns list the number of non-hydrogen atoms and hydrogen atoms in the chain respectively. The H(added) column lists the number of hydrogen atoms added and optimized by MolProbity. The Clashes column lists the number of clashes within the asymmetric unit, whereas Symm-Clashes lists symmetry related clashes.

Mol	Chain	Non-H	H(model)	H(added)	Clashes	Symm-Clashes
1	A	1054	0	1069	12	0
1	B	1054	0	1069	17	0
1	C	1054	0	1069	10	0
1	D	1054	0	1069	9	0
1	E	1053	0	1059	20	0
2	A	32	0	21	1	0
2	B	32	0	21	2	0
2	C	32	0	21	2	0
2	D	32	0	21	2	0
2	E	32	0	21	1	0
3	A	4	0	0	0	0
3	B	4	0	0	0	0
3	C	2	0	0	0	0
3	D	4	0	0	0	0
3	E	3	0	0	0	0
4	A	117	0	0	1	0
4	B	110	0	0	4	0
4	C	85	0	0	1	0
4	D	120	0	0	0	0
4	E	117	0	0	3	0
All	All	5995	0	5440	63	0

The all-atom clashscore is defined as the number of clashes found per 1000 atoms (including hydrogen atoms). The all-atom clashscore for this structure is 6.

All (63) close contacts within the same asymmetric unit are listed below, sorted by their clash magnitude.

Atom-1	Atom-2	Interatomic distance (Å)	Clash overlap (Å)
1:E:27:TRP:CB	1:E:27:TRP:CA	1.76	1.57
1:A:33:ASP:OD1	1:A:55:ARG:NH2	1.97	0.97
1:E:15:ALA:O	1:E:18:VAL:HG12	1.69	0.92
1:B:27:TRP:O	4:B:2008:HOH:O	1.88	0.91
1:E:27:TRP:CG	1:E:27:TRP:CA	2.62	0.83
1:D:15:ALA:O	1:D:18:VAL:HG12	1.85	0.77
1:B:103:ARG:HD3	1:B:107:ASP:OD1	1.86	0.74

*Continued on next page...*



*Continued from previous page...*

Atom-1	Atom-2	Interatomic distance (Å)	Clash overlap (Å)
1:E:27:TRP:C	1:E:27:TRP:CB	2.57	0.73
1:D:27:TRP:HD1	1:D:57:LEU:O	1.72	0.71
1:E:27:TRP:HZ3	4:E:2093:HOH:O	1.76	0.67
1:C:15:ALA:O	1:C:18:VAL:HG12	2.00	0.61
1:E:18:VAL:HG13	1:E:48:LEU:HD11	1.82	0.61
1:D:18:VAL:HG23	1:D:74:ASP:HB2	1.83	0.61
1:C:18:VAL:HG13	1:C:48:LEU:HD21	1.84	0.60
1:E:154:ARG:HG2	4:E:2104:HOH:O	2.01	0.60
1:A:57:LEU:CD1	1:B:144:VAL:HG12	2.33	0.59
1:D:18:VAL:HG13	1:D:48:LEU:HD11	1.86	0.57
1:E:156:LEU:CA	1:E:156:LEU:CG	2.83	0.57
1:C:33:ASP:OD1	1:C:55:ARG:NH2	2.37	0.57
1:E:33:ASP:OD1	1:E:55:ARG:NH2	2.40	0.55
1:D:117:LEU:HD21	1:D:138:LYS:HG3	1.88	0.54
1:E:15:ALA:HB2	1:E:151:LEU:HD11	1.89	0.54
1:C:89:HIS:HB3	2:C:701:TSF:H172	1.91	0.53
1:B:32:CYS:HB2	4:B:2008:HOH:O	2.08	0.52
1:A:57:LEU:HD13	1:B:144:VAL:HG12	1.92	0.52
1:E:15:ALA:O	1:E:18:VAL:CG1	2.52	0.51
1:D:60:ILE:HB	2:D:701:TSF:H12	1.93	0.51
1:B:18:VAL:HG21	1:B:147:LEU:HD22	1.93	0.51
1:B:57:LEU:CD1	1:C:144:VAL:HG12	2.41	0.50
1:A:118:THR:H	1:E:89:HIS:CE1	2.29	0.50
1:E:18:VAL:HG23	1:E:74:ASP:HB2	1.94	0.49
1:B:18:VAL:CG2	1:B:48:LEU:HD11	2.43	0.49
1:A:31:ILE:HG23	1:A:129:ALA:HB2	1.94	0.49
1:C:15:ALA:O	1:C:18:VAL:CG1	2.61	0.48
1:A:114:ASN:C	1:A:114:ASN:HD22	2.16	0.48
2:C:701:TSF:H181	4:C:2085:HOH:O	2.12	0.48
1:C:48:LEU:HD11	1:C:147:LEU:HD21	1.96	0.48
1:D:155:GLU:O	1:D:159:HIS:HE1	1.96	0.47
1:A:114:ASN:ND2	1:A:116:VAL:H	2.13	0.47
1:A:99:GLN:NE2	4:A:2062:HOH:O	2.40	0.46
1:E:85:GLY:HA3	2:E:701:TSF:F1	2.05	0.46
1:A:117:LEU:HD21	1:A:138:LYS:HG3	1.97	0.46
1:B:18:VAL:HG22	1:B:48:LEU:HD11	1.97	0.45
1:E:87:THR:OG1	1:E:89:HIS:CD2	2.70	0.45
1:E:27:TRP:HA	1:E:27:TRP:CG	2.51	0.45
1:E:72:ASN:HB2	4:E:2057:HOH:O	2.16	0.44
1:B:155:GLU:O	1:B:159:HIS:HE1	2.00	0.44
1:E:32:CYS:HB3	1:E:55:ARG:HH12	1.83	0.44

*Continued on next page...*

Continued from previous page...

Atom-1	Atom-2	Interatomic distance (Å)	Clash overlap (Å)
1:D:114:ASN:HD22	1:D:116:VAL:H	1.65	0.43
1:B:99:GLN:HE22	1:C:99:GLN:HA	1.85	0.42
1:B:58:GLY:HA3	2:B:701:TSF:H11	2.02	0.42
1:D:85:GLY:HA3	2:D:701:TSF:F1	2.09	0.42
1:A:58:GLY:HA3	2:A:701:TSF:H11	2.02	0.42
1:C:117:LEU:HD23	1:C:138:LYS:HD3	2.01	0.41
1:B:123:GLU:HG3	4:B:2085:HOH:O	2.20	0.41
1:B:72:ASN:ND2	4:B:2053:HOH:O	2.53	0.41
1:B:75:ALA:HB1	1:B:146:ALA:HB1	2.02	0.41
1:B:60:ILE:HB	2:B:701:TSF:H12	2.03	0.40
1:A:117:LEU:HA	1:E:89:HIS:HE1	1.86	0.40
1:C:131:LEU:HB3	1:C:132:PRO:HD2	2.04	0.40
1:A:31:ILE:HG23	1:A:129:ALA:CB	2.51	0.40
1:B:131:LEU:HB3	1:B:132:PRO:HD2	2.04	0.40
1:E:27:TRP:HA	1:E:27:TRP:CD1	2.57	0.40

There are no symmetry-related clashes.

## 5.3 Torsion angles

### 5.3.1 Protein backbone

In the following table, the Percentiles column shows the percent Ramachandran outliers of the chain as a percentile score with respect to all X-ray entries followed by that with respect to entries of similar resolution.

The Analysed column shows the number of residues for which the backbone conformation was analysed, and the total number of residues.

Mol	Chain	Analysed	Favoured	Allowed	Outliers	Percentiles	
1	A	144/160 (90%)	143 (99%)	0	1 (1%)	22	12
1	B	144/160 (90%)	143 (99%)	1 (1%)	0	100	100
1	C	144/160 (90%)	141 (98%)	3 (2%)	0	100	100
1	D	144/160 (90%)	143 (99%)	1 (1%)	0	100	100
1	E	144/160 (90%)	142 (99%)	2 (1%)	0	100	100
All	All	720/800 (90%)	712 (99%)	7 (1%)	1 (0%)	51	43

All (1) Ramachandran outliers are listed below:

Mol	Chain	Res	Type
1	A	28	HIS

### 5.3.2 Protein sidechains [i](#)

In the following table, the Percentiles column shows the percent sidechain outliers of the chain as a percentile score with respect to all X-ray entries followed by that with respect to entries of similar resolution.

The Analysed column shows the number of residues for which the sidechain conformation was analysed, and the total number of residues.

Mol	Chain	Analysed	Rotameric	Outliers	Percentiles	
1	A	110/120 (92%)	107 (97%)	3 (3%)	44	38
1	B	110/120 (92%)	107 (97%)	3 (3%)	44	38
1	C	110/120 (92%)	107 (97%)	3 (3%)	44	38
1	D	110/120 (92%)	109 (99%)	1 (1%)	78	79
1	E	109/120 (91%)	107 (98%)	2 (2%)	59	55
All	All	549/600 (92%)	537 (98%)	12 (2%)	52	47

All (12) residues with a non-rotameric sidechain are listed below:

Mol	Chain	Res	Type
1	A	27	TRP
1	A	48	LEU
1	A	114	ASN
1	B	72	ASN
1	B	103	ARG
1	B	131	LEU
1	C	18	VAL
1	C	114	ASN
1	C	123	GLU
1	D	114	ASN
1	E	27	TRP
1	E	55	ARG

Some sidechains can be flipped to improve hydrogen bonding and reduce clashes. All (16) such sidechains are listed below:

Mol	Chain	Res	Type
1	A	99	GLN
1	A	114	ASN

*Continued on next page...*

*Continued from previous page...*

Mol	Chain	Res	Type
1	A	159	HIS
1	B	28	HIS
1	B	72	ASN
1	B	99	GLN
1	B	159	HIS
1	C	99	GLN
1	C	114	ASN
1	C	159	HIS
1	D	72	ASN
1	D	114	ASN
1	D	159	HIS
1	E	89	HIS
1	E	99	GLN
1	E	159	HIS

### 5.3.3 RNA [i](#)

There are no RNA molecules in this entry.

## 5.4 Non-standard residues in protein, DNA, RNA chains [i](#)

There are no non-standard protein/DNA/RNA residues in this entry.

## 5.5 Carbohydrates [i](#)

There are no carbohydrates in this entry.

## 5.6 Ligand geometry [i](#)

Of 22 ligands modelled in this entry, 17 are monoatomic - leaving 5 for Mogul analysis.

In the following table, the Counts columns list the number of bonds (or angles) for which Mogul statistics could be retrieved, the number of bonds (or angles) that are observed in the model and the number of bonds (or angles) that are defined in the Chemical Component Dictionary. The Link column lists molecule types, if any, to which the group is linked. The Z score for a bond length (or angle) is the number of standard deviations the observed value is removed from the expected value. A bond length (or angle) with  $|Z| > 2$  is considered an outlier worth inspection. RMSZ is the root-mean-square of all Z scores of the bond lengths (or angles).

Mol	Type	Chain	Res	Link	Bond lengths			Bond angles		
					Counts	RMSZ	# Z  > 2	Counts	RMSZ	# Z  > 2
2	TSF	E	701	-	32,33,33	3.59	7 (21%)	35,50,50	2.87	11 (31%)
2	TSF	D	701	-	32,33,33	3.50	7 (21%)	35,50,50	2.93	14 (40%)
2	TSF	C	701	-	32,33,33	3.57	7 (21%)	35,50,50	2.86	12 (34%)
2	TSF	B	701	-	32,33,33	3.56	7 (21%)	35,50,50	2.85	13 (37%)
2	TSF	A	701	-	32,33,33	3.67	7 (21%)	35,50,50	2.83	14 (40%)

In the following table, the Chirals column lists the number of chiral outliers, the number of chiral centers analysed, the number of these observed in the model and the number defined in the Chemical Component Dictionary. Similar counts are reported in the Torsion and Rings columns. '-' means no outliers of that kind were identified.

Mol	Type	Chain	Res	Link	Chirals	Torsions	Rings
2	TSF	E	701	-	-	8/27/31/31	0/2/2/2
2	TSF	D	701	-	-	7/27/31/31	0/2/2/2
2	TSF	C	701	-	-	11/27/31/31	0/2/2/2
2	TSF	B	701	-	-	9/27/31/31	0/2/2/2
2	TSF	A	701	-	-	9/27/31/31	0/2/2/2

All (35) bond length outliers are listed below:

Mol	Chain	Res	Type	Atoms	Z	Observed(Å)	Ideal(Å)
2	A	701	TSF	C8-N1	-10.51	1.33	1.46
2	E	701	TSF	C9-N5	-10.31	1.33	1.46
2	B	701	TSF	C8-N1	-9.93	1.34	1.46
2	D	701	TSF	C9-N5	-9.77	1.34	1.46
2	D	701	TSF	C8-N1	-9.76	1.34	1.46
2	A	701	TSF	C9-N5	-9.75	1.34	1.46
2	C	701	TSF	C8-N1	-9.73	1.34	1.46
2	E	701	TSF	C8-N1	-9.68	1.34	1.46
2	C	701	TSF	C9-N5	-9.68	1.34	1.46
2	B	701	TSF	C9-N5	-9.65	1.34	1.46
2	A	701	TSF	C8-N7	-9.58	1.34	1.45
2	D	701	TSF	C8-N7	-9.33	1.35	1.45
2	E	701	TSF	C8-N7	-9.11	1.35	1.45
2	B	701	TSF	C8-N7	-9.02	1.35	1.45
2	C	701	TSF	C8-N7	-8.98	1.35	1.45
2	C	701	TSF	F2-C19	-7.52	1.31	1.37
2	B	701	TSF	F1-C19	-7.15	1.32	1.37
2	A	701	TSF	F1-C19	-6.87	1.32	1.37
2	A	701	TSF	F2-C19	-6.74	1.32	1.37

*Continued on next page...*

*Continued from previous page...*

Mol	Chain	Res	Type	Atoms	Z	Observed(Å)	Ideal(Å)
2	C	701	TSF	F1-C19	-6.66	1.32	1.37
2	B	701	TSF	F2-C19	-6.61	1.32	1.37
2	E	701	TSF	F2-C19	-6.45	1.32	1.37
2	E	701	TSF	F1-C19	-6.44	1.32	1.37
2	D	701	TSF	F2-C19	-6.27	1.32	1.37
2	D	701	TSF	F1-C19	-6.08	1.33	1.37
2	E	701	TSF	O4-C6	3.73	1.29	1.22
2	C	701	TSF	O4-C6	3.68	1.29	1.22
2	B	701	TSF	O4-C6	3.62	1.29	1.22
2	A	701	TSF	O4-C6	3.59	1.29	1.22
2	D	701	TSF	O4-C6	3.26	1.28	1.22
2	E	701	TSF	C9-C4	-3.16	1.48	1.51
2	A	701	TSF	C9-C4	-2.89	1.48	1.51
2	B	701	TSF	C9-C4	-2.58	1.48	1.51
2	D	701	TSF	C9-C4	-2.48	1.49	1.51
2	C	701	TSF	C9-C4	-2.26	1.49	1.51

All (64) bond angle outliers are listed below:

Mol	Chain	Res	Type	Atoms	Z	Observed(°)	Ideal(°)
2	B	701	TSF	C8-N7-C6	-7.57	105.03	111.97
2	E	701	TSF	C10-N7-C8	7.56	132.97	122.42
2	C	701	TSF	C8-N7-C6	-7.52	105.07	111.97
2	D	701	TSF	C8-N7-C6	-7.44	105.14	111.97
2	D	701	TSF	C10-N7-C8	7.32	132.64	122.42
2	A	701	TSF	C8-N7-C6	-7.17	105.39	111.97
2	E	701	TSF	C8-N7-C6	-7.10	105.45	111.97
2	C	701	TSF	N3-C2-N1	7.06	123.55	116.12
2	D	701	TSF	N3-C2-N1	6.94	123.43	116.12
2	C	701	TSF	C10-N7-C8	6.94	132.11	122.42
2	B	701	TSF	C10-N7-C8	6.88	132.03	122.42
2	D	701	TSF	N7-C6-N5	6.86	117.44	108.33
2	B	701	TSF	N3-C2-N1	6.83	123.31	116.12
2	A	701	TSF	N3-C2-N1	6.81	123.29	116.12
2	A	701	TSF	C10-N7-C8	6.73	131.82	122.42
2	B	701	TSF	N7-C6-N5	6.64	117.15	108.33
2	E	701	TSF	N3-C2-N1	6.56	123.03	116.12
2	C	701	TSF	N7-C6-N5	6.53	117.01	108.33
2	A	701	TSF	N7-C6-N5	6.41	116.85	108.33
2	E	701	TSF	N7-C6-N5	6.40	116.83	108.33
2	C	701	TSF	O4-C6-N7	-3.86	119.95	125.80
2	D	701	TSF	O4-C6-N7	-3.79	120.06	125.80

*Continued on next page...*

*Continued from previous page...*

Mol	Chain	Res	Type	Atoms	Z	Observed(°)	Ideal(°)
2	A	701	TSF	O4-C6-N7	-3.68	120.23	125.80
2	E	701	TSF	O4-C6-N7	-3.67	120.25	125.80
2	C	701	TSF	C15-N5-C6	3.52	128.88	121.14
2	B	701	TSF	O4-C6-N7	-3.30	120.81	125.80
2	E	701	TSF	C15-N5-C6	3.28	128.36	121.14
2	C	701	TSF	C9-C8-N7	3.12	105.55	102.92
2	D	701	TSF	C15-N5-C6	3.01	127.76	121.14
2	B	701	TSF	C9-C8-N7	3.00	105.45	102.92
2	B	701	TSF	C4-N3-C2	-2.99	122.25	126.25
2	B	701	TSF	C15-N5-C6	2.98	127.69	121.14
2	A	701	TSF	O21-C12-C11	-2.96	101.65	108.81
2	A	701	TSF	C9-C8-N7	2.94	105.40	102.92
2	D	701	TSF	C13-C12-C11	2.93	119.45	113.36
2	E	701	TSF	C13-C12-C11	2.92	119.44	113.36
2	B	701	TSF	C16-C15-N5	-2.88	108.86	113.31
2	E	701	TSF	O21-C12-C11	-2.88	101.85	108.81
2	A	701	TSF	O1-C2-N1	-2.87	117.19	122.92
2	A	701	TSF	C15-N5-C6	2.87	127.45	121.14
2	C	701	TSF	C4-N3-C2	-2.85	122.43	126.25
2	D	701	TSF	C4-N3-C2	-2.79	122.52	126.25
2	A	701	TSF	C4-N3-C2	-2.74	122.58	126.25
2	C	701	TSF	C13-C12-C11	2.65	118.87	113.36
2	E	701	TSF	C4-N3-C2	-2.62	122.74	126.25
2	D	701	TSF	C9-C8-N7	2.60	105.11	102.92
2	A	701	TSF	C16-C15-N5	-2.55	109.37	113.31
2	A	701	TSF	F2-C19-F1	2.49	109.79	106.64
2	B	701	TSF	O4-C6-N5	-2.48	122.04	125.80
2	D	701	TSF	O21-C12-C11	-2.42	102.96	108.81
2	D	701	TSF	O23-C13-C12	2.42	114.98	109.10
2	D	701	TSF	F2-C19-P	2.37	111.42	107.76
2	B	701	TSF	C13-C12-C11	2.35	118.25	113.36
2	D	701	TSF	O1-C2-N1	-2.34	118.26	122.92
2	A	701	TSF	C13-C12-C11	2.33	118.21	113.36
2	E	701	TSF	C9-C8-N7	2.31	104.87	102.92
2	B	701	TSF	O1-C2-N1	-2.29	118.35	122.92
2	A	701	TSF	O1P-P-O3P	2.26	114.38	107.99
2	C	701	TSF	O21-C12-C11	-2.25	103.37	108.81
2	C	701	TSF	O1-C2-N1	-2.21	118.51	122.92
2	D	701	TSF	O4-C6-N5	-2.19	122.50	125.80
2	C	701	TSF	O1-C2-N3	-2.06	117.94	121.82
2	E	701	TSF	O1-C2-N3	-2.04	117.97	121.82
2	B	701	TSF	O21-C12-C11	-2.01	103.96	108.81

There are no chirality outliers.

All (44) torsion outliers are listed below:

Mol	Chain	Res	Type	Atoms
2	B	701	TSF	C11-C10-N7-C6
2	B	701	TSF	C11-C10-N7-C8
2	B	701	TSF	C10-C11-C12-O21
2	B	701	TSF	C10-C11-C12-C13
2	B	701	TSF	O19-C11-C12-O21
2	B	701	TSF	O19-C11-C12-C13
2	A	701	TSF	C11-C10-N7-C6
2	A	701	TSF	C11-C10-N7-C8
2	A	701	TSF	C10-C11-C12-O21
2	A	701	TSF	C10-C11-C12-C13
2	A	701	TSF	O19-C11-C12-O21
2	A	701	TSF	O19-C11-C12-C13
2	D	701	TSF	C16-C17-C18-C19
2	D	701	TSF	C11-C10-N7-C6
2	D	701	TSF	C11-C10-N7-C8
2	D	701	TSF	C10-C11-C12-O21
2	D	701	TSF	C10-C11-C12-C13
2	D	701	TSF	O19-C11-C12-O21
2	D	701	TSF	O19-C11-C12-C13
2	E	701	TSF	C17-C18-C19-F2
2	E	701	TSF	C11-C10-N7-C6
2	E	701	TSF	C11-C10-N7-C8
2	E	701	TSF	C10-C11-C12-O21
2	E	701	TSF	C10-C11-C12-C13
2	E	701	TSF	O19-C11-C12-O21
2	E	701	TSF	O19-C11-C12-C13
2	C	701	TSF	F2-C19-P-O2P
2	C	701	TSF	C11-C10-N7-C6
2	C	701	TSF	C11-C10-N7-C8
2	C	701	TSF	C10-C11-C12-O21
2	C	701	TSF	C10-C11-C12-C13
2	C	701	TSF	O19-C11-C12-O21
2	C	701	TSF	O19-C11-C12-C13
2	C	701	TSF	N5-C15-C16-C17
2	B	701	TSF	C17-C18-C19-F2
2	E	701	TSF	C17-C18-C19-F1
2	C	701	TSF	C17-C18-C19-F2
2	A	701	TSF	C16-C17-C18-C19
2	C	701	TSF	C16-C17-C18-C19
2	B	701	TSF	C17-C18-C19-F1

*Continued on next page...*



*Continued from previous page...*

Mol	Chain	Res	Type	Atoms
2	A	701	TSF	C17-C18-C19-F1
2	C	701	TSF	F1-C19-P-O2P
2	B	701	TSF	C16-C17-C18-C19
2	A	701	TSF	C17-C18-C19-F2

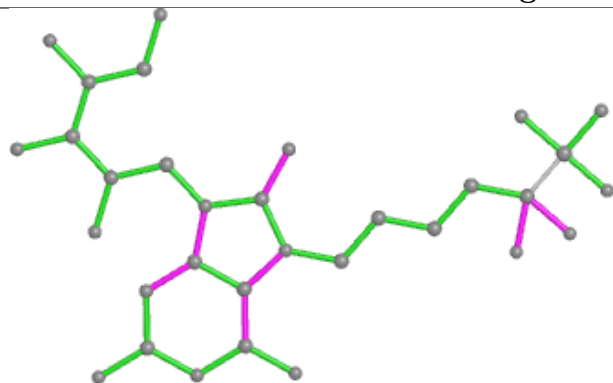
There are no ring outliers.

5 monomers are involved in 8 short contacts:

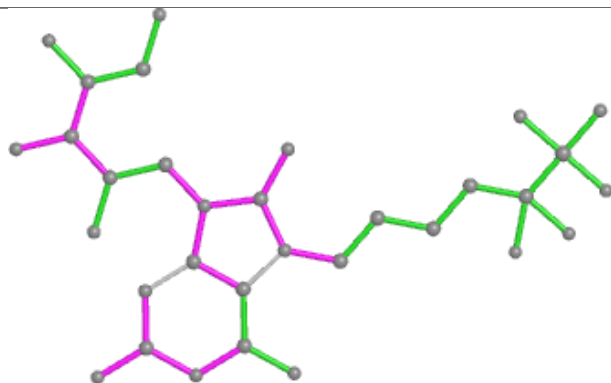
Mol	Chain	Res	Type	Clashes	Symm-Clashes
2	E	701	TSF	1	0
2	D	701	TSF	2	0
2	C	701	TSF	2	0
2	B	701	TSF	2	0
2	A	701	TSF	1	0

The following is a two-dimensional graphical depiction of Mogul quality analysis of bond lengths, bond angles, torsion angles, and ring geometry for all instances of the Ligand of Interest. In addition, ligands with molecular weight > 250 and outliers as shown on the validation Tables will also be included. For torsion angles, if less than 5% of the Mogul distribution of torsion angles is within 10 degrees of the torsion angle in question, then that torsion angle is considered an outlier. Any bond that is central to one or more torsion angles identified as an outlier by Mogul will be highlighted in the graph. For rings, the root-mean-square deviation (RMSD) between the ring in question and similar rings identified by Mogul is calculated over all ring torsion angles. If the average RMSD is greater than 60 degrees and the minimal RMSD between the ring in question and any Mogul-identified rings is also greater than 60 degrees, then that ring is considered an outlier. The outliers are highlighted in purple. The color gray indicates Mogul did not find sufficient equivalents in the CSD to analyse the geometry.

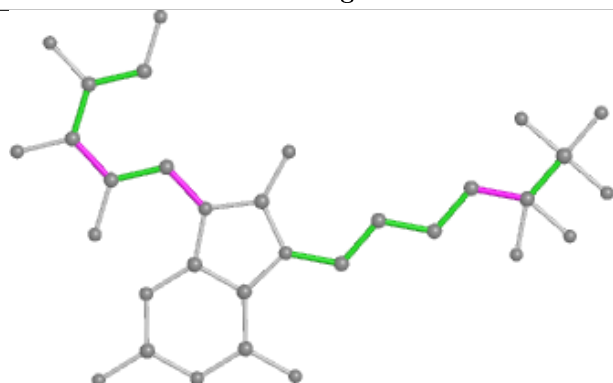
## Ligand TSF E 701



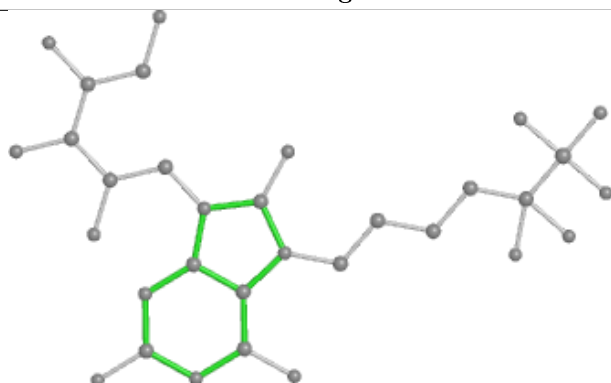
Bond lengths



Bond angles

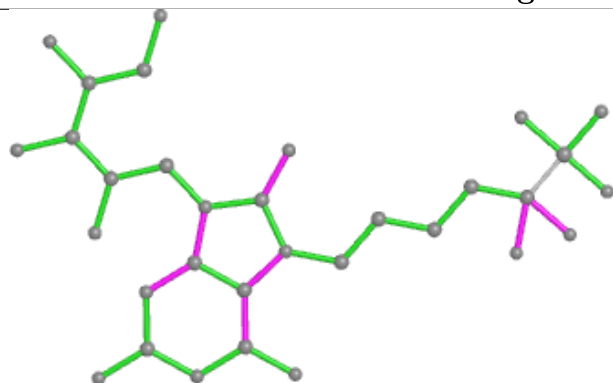


Torsions

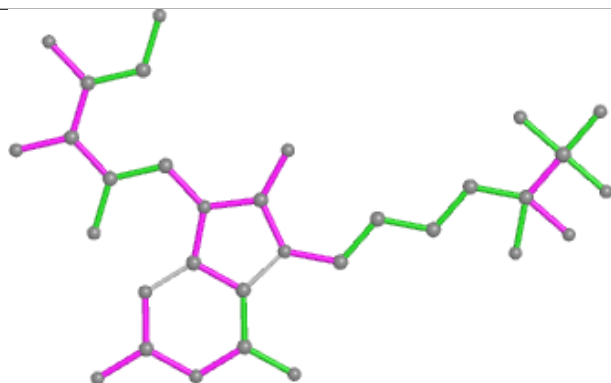


Rings

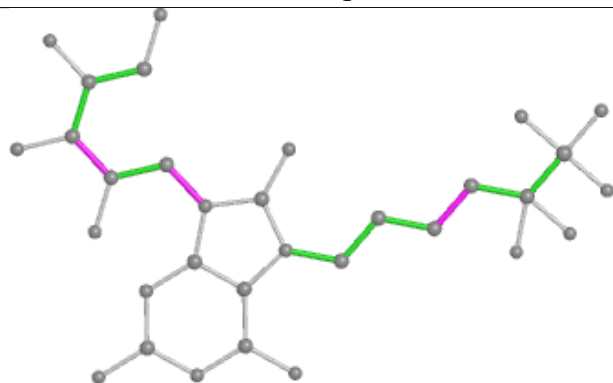
## Ligand TSF D 701



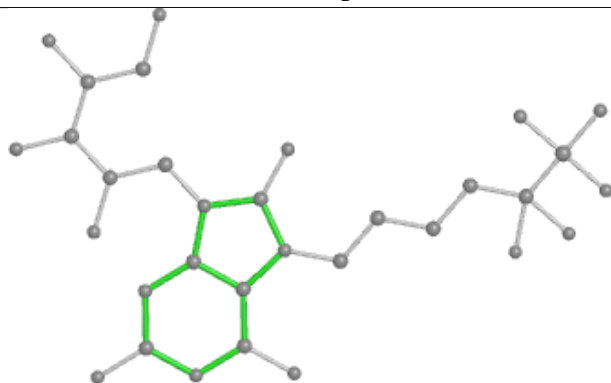
Bond lengths



Bond angles

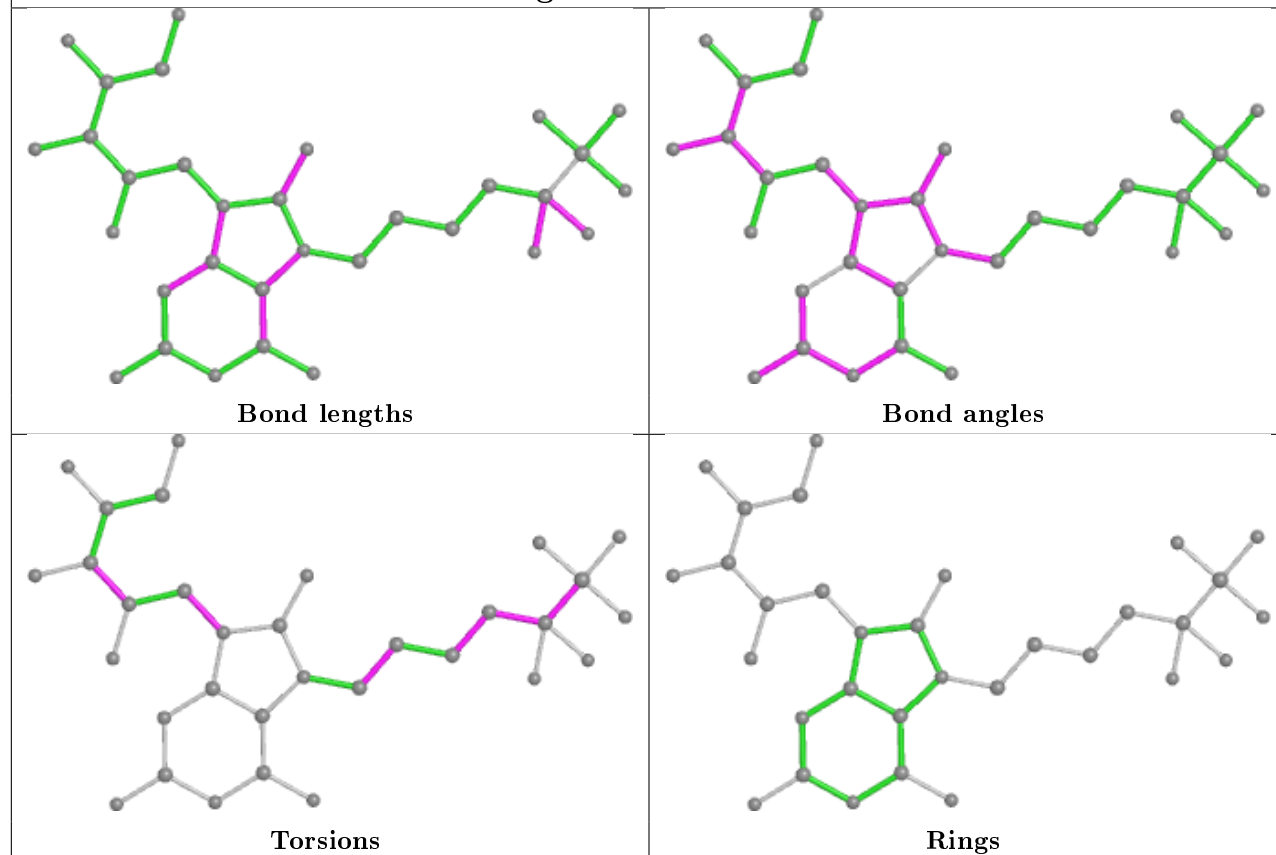


Torsions

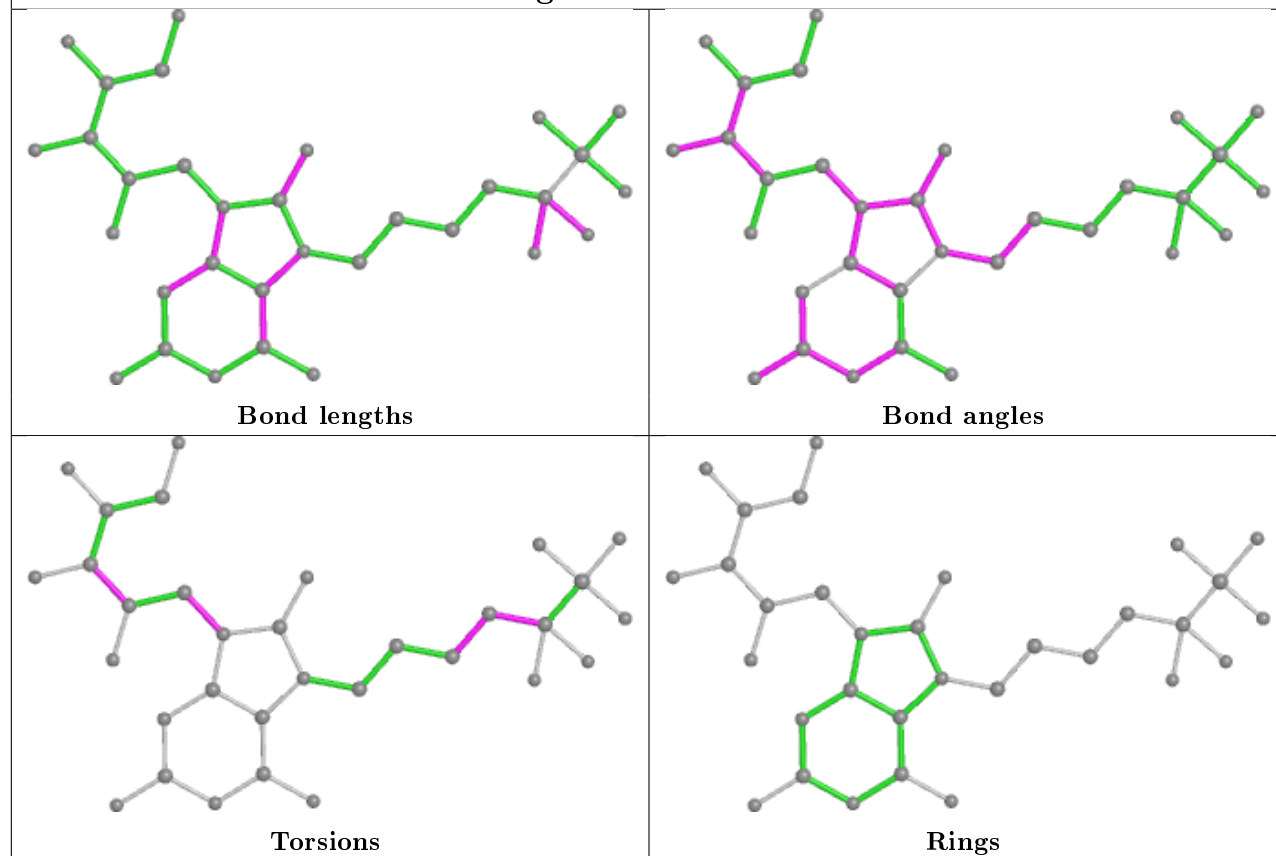


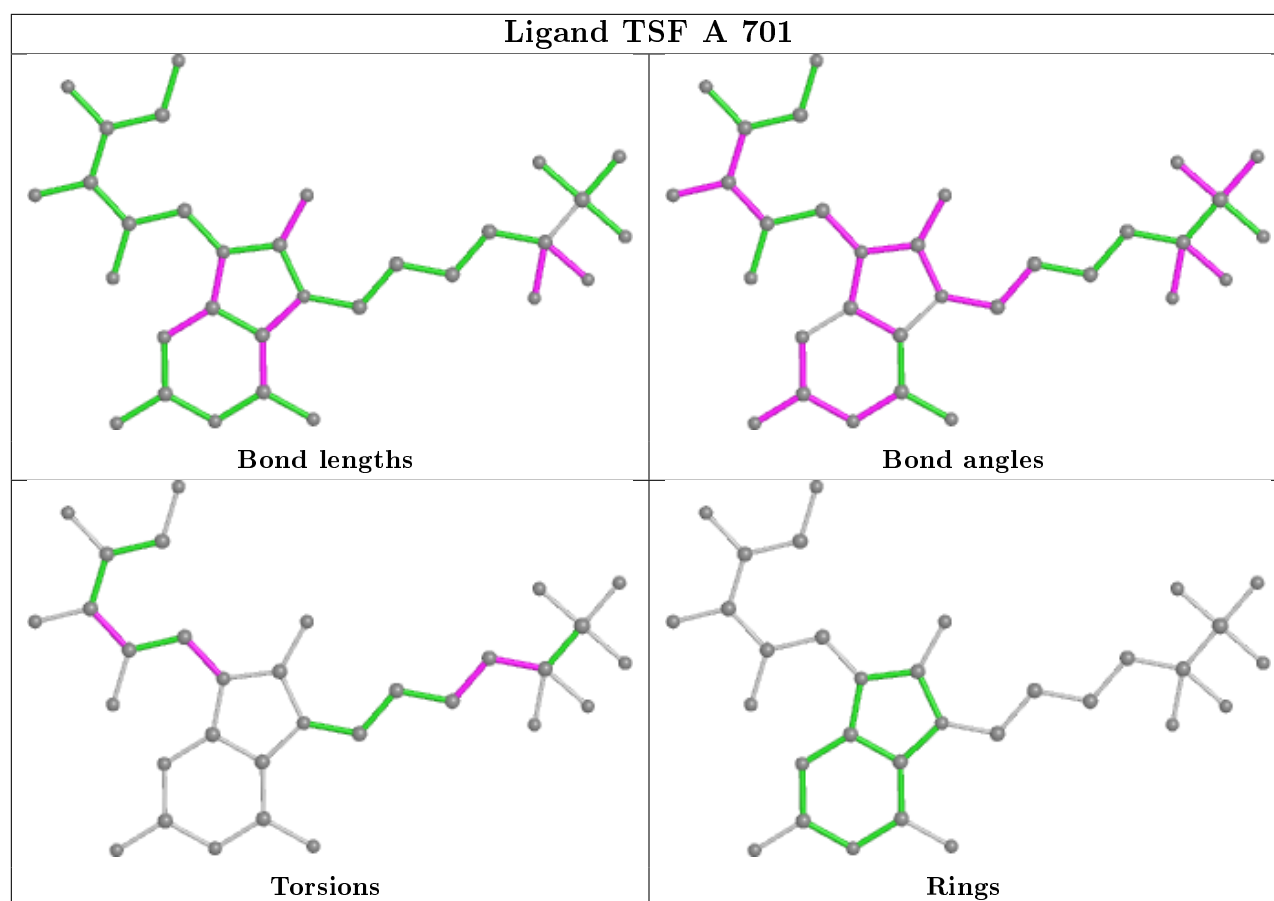
Rings

## Ligand TSF C 701



## Ligand TSF B 701





## 5.7 Other polymers [i](#)

There are no such residues in this entry.

## 5.8 Polymer linkage issues [i](#)

There are no chain breaks in this entry.

## 6 Fit of model and data ⓘ

### 6.1 Protein, DNA and RNA chains ⓘ

In the following table, the column labelled ‘#RSRZ> 2’ contains the number (and percentage) of RSRZ outliers, followed by percent RSRZ outliers for the chain as percentile scores relative to all X-ray entries and entries of similar resolution. The OWAB column contains the minimum, median, 95<sup>th</sup> percentile and maximum values of the occupancy-weighted average B-factor per residue. The column labelled ‘Q< 0.9’ lists the number of (and percentage) of residues with an average occupancy less than 0.9.

Mol	Chain	Analysed	<RSRZ>	#RSRZ>2	OWAB(Å <sup>2</sup> )	Q<0.9
1	A	146/160 (91%)	0.31	5 (3%) 45 48	24, 28, 35, 39	0
1	B	146/160 (91%)	0.33	8 (5%) 25 28	24, 28, 36, 39	0
1	C	146/160 (91%)	0.60	15 (10%) 6 7	24, 29, 37, 41	0
1	D	146/160 (91%)	0.48	12 (8%) 11 13	23, 28, 36, 38	0
1	E	146/160 (91%)	0.49	12 (8%) 11 13	23, 28, 37, 40	0
All	All	730/800 (91%)	0.44	52 (7%) 16 17	23, 28, 37, 41	0

All (52) RSRZ outliers are listed below:

Mol	Chain	Res	Type	RSRZ
1	D	160	SER	7.1
1	D	133	THR	6.4
1	C	160	SER	5.1
1	C	133	THR	5.1
1	B	27	TRP	4.9
1	A	160	SER	4.8
1	E	133	THR	4.6
1	C	49	ASP	4.5
1	C	135	ALA	4.2
1	B	160	SER	4.0
1	C	132	PRO	4.0
1	B	86	GLN	3.8
1	E	160	SER	3.8
1	C	27	TRP	3.7
1	C	48	LEU	3.7
1	A	57	LEU	3.5
1	E	27	TRP	3.4
1	C	50	ASP	3.1
1	B	16	SER	3.1
1	E	49	ASP	2.9

*Continued on next page...*

*Continued from previous page...*

Mol	Chain	Res	Type	RSRZ
1	D	16	SER	2.8
1	A	27	TRP	2.8
1	B	57	LEU	2.7
1	E	159	HIS	2.7
1	D	117	LEU	2.6
1	C	136	GLU	2.6
1	D	27	TRP	2.6
1	D	155	GLU	2.5
1	D	50	ASP	2.4
1	E	132	PRO	2.4
1	A	86	GLN	2.4
1	C	86	GLN	2.4
1	D	132	PRO	2.3
1	B	123	GLU	2.3
1	D	33	ASP	2.2
1	B	30	LYS	2.2
1	E	154	ARG	2.2
1	D	30	LYS	2.2
1	C	155	GLU	2.1
1	D	136	GLU	2.1
1	E	155	GLU	2.1
1	E	136	GLU	2.1
1	C	32	CYS	2.1
1	C	16	SER	2.1
1	E	135	ALA	2.1
1	B	117	LEU	2.1
1	E	134	SER	2.0
1	C	117	LEU	2.0
1	C	57	LEU	2.0
1	D	57	LEU	2.0
1	A	133	THR	2.0
1	E	16	SER	2.0

## 6.2 Non-standard residues in protein, DNA, RNA chains [i](#)

There are no non-standard protein/DNA/RNA residues in this entry.

## 6.3 Carbohydrates [i](#)

There are no carbohydrates in this entry.

## 6.4 Ligands

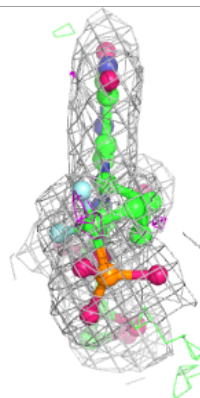
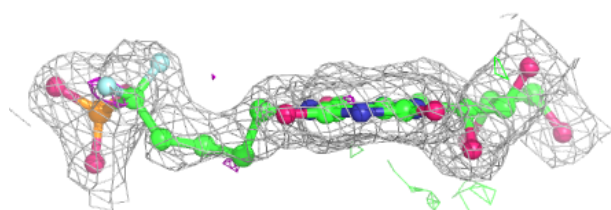
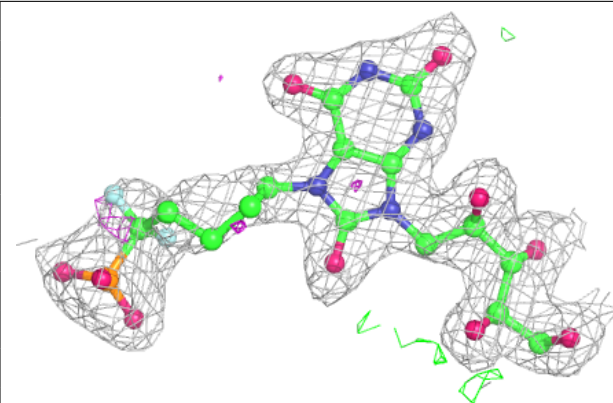
In the following table, the Atoms column lists the number of modelled atoms in the group and the number defined in the chemical component dictionary. The B-factors column lists the minimum, median, 95<sup>th</sup> percentile and maximum values of B factors of atoms in the group. The column labelled 'Q< 0.9' lists the number of atoms with occupancy less than 0.9.

Mol	Type	Chain	Res	Atoms	RSCC	RSR	B-factors(Å <sup>2</sup> )	Q<0.9
3	K	D	1164	1/1	0.80	0.28	60,60,60,60	0
2	TSF	C	701	32/32	0.89	0.13	29,34,42,43	0
3	K	B	1164	1/1	0.91	0.25	44,44,44,44	0
2	TSF	E	701	32/32	0.91	0.11	27,31,41,43	0
3	K	E	1163	1/1	0.91	0.24	44,44,44,44	0
2	TSF	D	701	32/32	0.91	0.12	27,31,38,39	0
3	K	A	1163	1/1	0.92	0.06	35,35,35,35	1
2	TSF	A	701	32/32	0.92	0.10	30,32,37,39	0
2	TSF	B	701	32/32	0.92	0.12	34,36,40,41	0
3	K	D	1162	1/1	0.93	0.17	37,37,37,37	0
3	K	C	1162	1/1	0.93	0.36	42,42,42,42	0
3	K	E	1162	1/1	0.96	0.12	37,37,37,37	0
3	K	A	1164	1/1	0.97	0.26	43,43,43,43	0
3	K	D	1163	1/1	0.97	0.14	25,25,25,25	0
3	K	A	1162	1/1	0.97	0.11	32,32,32,32	0
3	K	B	1163	1/1	0.98	0.10	28,28,28,28	0
3	K	D	1161	1/1	0.99	0.03	26,26,26,26	0
3	K	A	1161	1/1	0.99	0.04	27,27,27,27	0
3	K	B	1161	1/1	0.99	0.03	27,27,27,27	0
3	K	B	1162	1/1	0.99	0.14	28,28,28,28	0
3	K	C	1161	1/1	1.00	0.04	27,27,27,27	0
3	K	E	1161	1/1	1.00	0.04	26,26,26,26	0

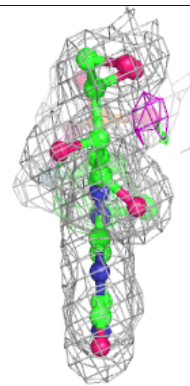
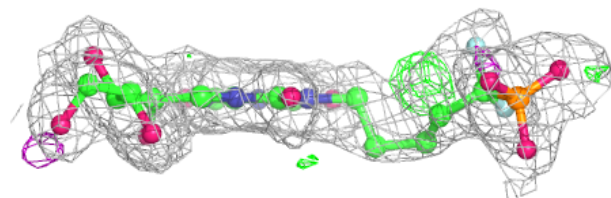
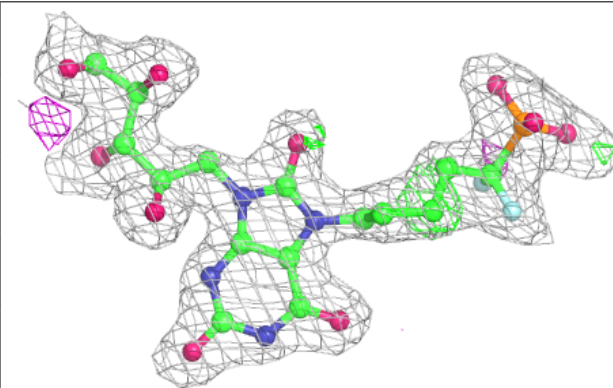
The following is a graphical depiction of the model fit to experimental electron density of all instances of the Ligand of Interest. In addition, ligands with molecular weight > 250 and outliers as shown on the geometry validation Tables will also be included. Each fit is shown from different orientation to approximate a three-dimensional view.

**Electron density around TSF C 701:**

$2mF_o-DF_c$  (at 0.7 rmsd) in gray  
 $mF_o-DF_c$  (at 3 rmsd) in purple (negative)  
and green (positive)

**Electron density around TSF E 701:**

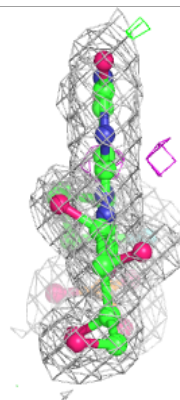
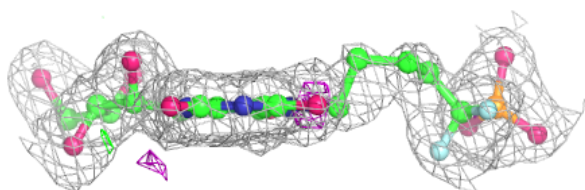
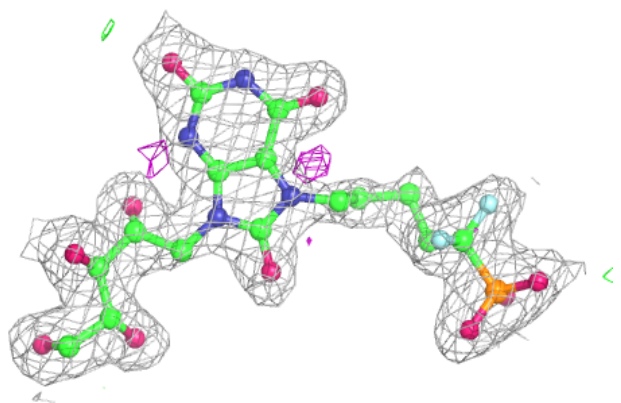
$2mF_o-DF_c$  (at 0.7 rmsd) in gray  
 $mF_o-DF_c$  (at 3 rmsd) in purple (negative)  
and green (positive)



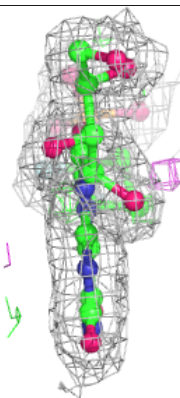
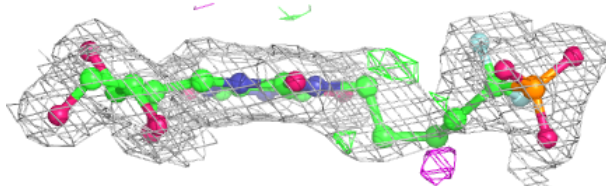
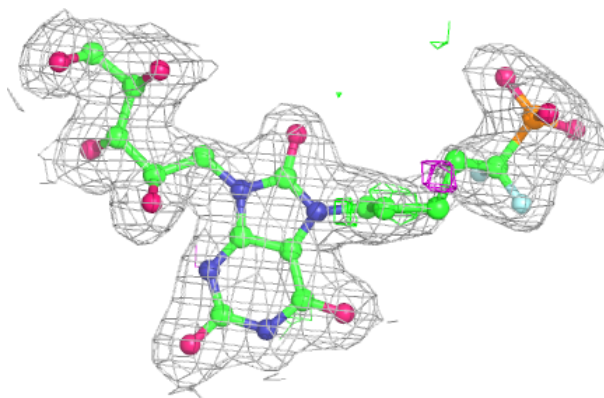


**Electron density around TSF D 701:**

$2mF_o-DF_c$  (at 0.7 rmsd) in gray  
 $mF_o-DF_c$  (at 3 rmsd) in purple (negative)  
and green (positive)

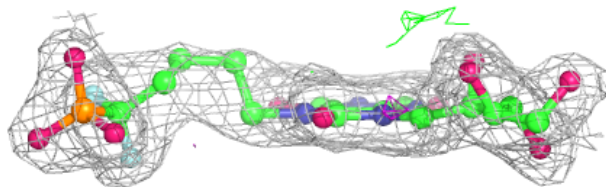
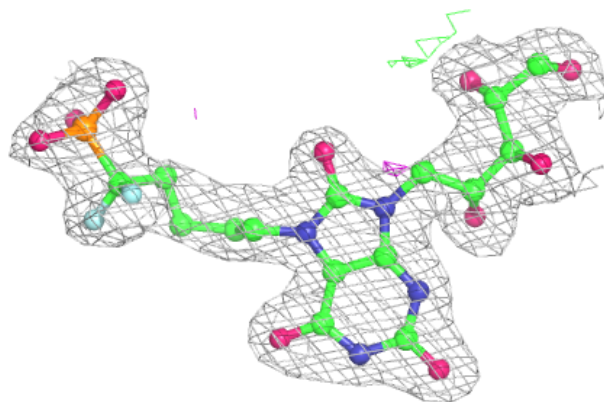
**Electron density around TSF A 701:**

$2mF_o-DF_c$  (at 0.7 rmsd) in gray  
 $mF_o-DF_c$  (at 3 rmsd) in purple (negative)  
and green (positive)



**Electron density around TSF B 701:**

$2mF_o-DF_c$  (at 0.7 rmsd) in gray  
 $mF_o-DF_c$  (at 3 rmsd) in purple (negative)  
and green (positive)



## 6.5 Other polymers [i](#)

There are no such residues in this entry.