



Full wwPDB X-ray Structure Validation Report ⓘ

May 25, 2020 – 04:07 am BST

PDB ID : 5C9C
Title : CRYSTAL STRUCTURE OF BRAF(V600E) IN COMPLEX WITH
LY3009120 COMPND
Authors : Edwards, T.; Abendroth, J.; Chun, L.
Deposited on : 2015-06-26
Resolution : 2.70 Å(reported)

This is a Full wwPDB X-ray Structure Validation Report for a publicly released PDB entry.

We welcome your comments at validation@mail.wwpdb.org

A user guide is available at

<https://www.wwpdb.org/validation/2017/XrayValidationReportHelp>

with specific help available everywhere you see the ⓘ symbol.

The following versions of software and data (see [references ⓘ](#)) were used in the production of this report:

MolProbity : 4.02b-467
Mogul : 1.8.5 (274361), CSD as541be (2020)
Xtriage (Phenix) : 1.13
EDS : 2.11
buster-report : 1.1.7 (2018)
Percentile statistics : 20191225.v01 (using entries in the PDB archive December 25th 2019)
Refmac : 5.8.0158
CCP4 : 7.0.044 (Gargrove)
Ideal geometry (proteins) : Engh & Huber (2001)
Ideal geometry (DNA, RNA) : Parkinson et al. (1996)
Validation Pipeline (wwPDB-VP) : 2.11

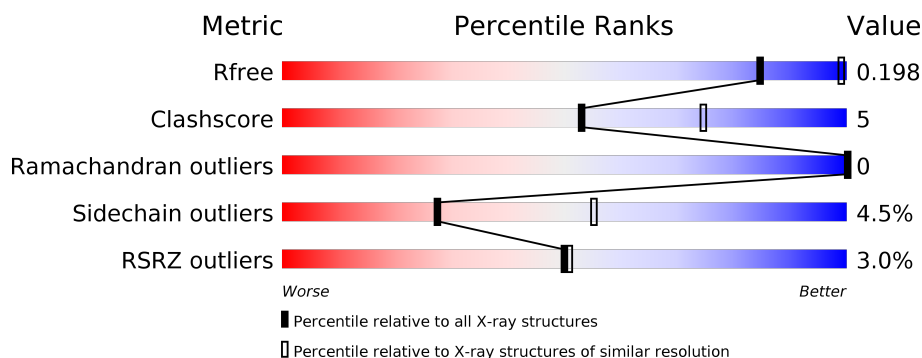
1 Overall quality at a glance

The following experimental techniques were used to determine the structure:

X-RAY DIFFRACTION

The reported resolution of this entry is 2.70 Å.

Percentile scores (ranging between 0-100) for global validation metrics of the entry are shown in the following graphic. The table shows the number of entries on which the scores are based.



Metric	Whole archive (#Entries)	Similar resolution (#Entries, resolution range(Å))
R_{free}	130704	2808 (2.70-2.70)
Clashscore	141614	3122 (2.70-2.70)
Ramachandran outliers	138981	3069 (2.70-2.70)
Sidechain outliers	138945	3069 (2.70-2.70)
RSRZ outliers	127900	2737 (2.70-2.70)

The table below summarises the geometric issues observed across the polymeric chains and their fit to the electron density. The red, orange, yellow and green segments on the lower bar indicate the fraction of residues that contain outliers for ≥ 3 , 2, 1 and 0 types of geometric quality criteria respectively. A grey segment represents the fraction of residues that are not modelled. The numeric value for each fraction is indicated below the corresponding segment, with a dot representing fractions $\leq 5\%$. The upper red bar (where present) indicates the fraction of residues that have poor fit to the electron density. The numeric value is given above the bar.

Mol	Chain	Length	Quality of chain
1	A	307	<div> <div>2%</div> <div> <div></div> <div>70%</div> <div>12%</div> <div>•</div> <div>17%</div> </div> </div>
1	B	307	<div> <div>3%</div> <div> <div></div> <div>68%</div> <div>13%</div> <div>18%</div> </div> </div>

2 Entry composition

There are 4 unique types of molecules in this entry. The entry contains 4153 atoms, of which 0 are hydrogens and 0 are deuteriums.

In the tables below, the ZeroOcc column contains the number of atoms modelled with zero occupancy, the AltConf column contains the number of residues with at least one atom in alternate conformation and the Trace column contains the number of residues modelled with at most 2 atoms.

- Molecule 1 is a protein called Serine/threonine-protein kinase B-raf.

Mol	Chain	Residues	Atoms					ZeroOcc	AltConf	Trace
1	A	254	Total	C	N	O	S	0	1	0
			1997	1284	344	357	12			
1	B	251	Total	C	N	O	S	0	1	0
			1958	1261	334	350	13			

There are 26 discrepancies between the modelled and reference sequences:

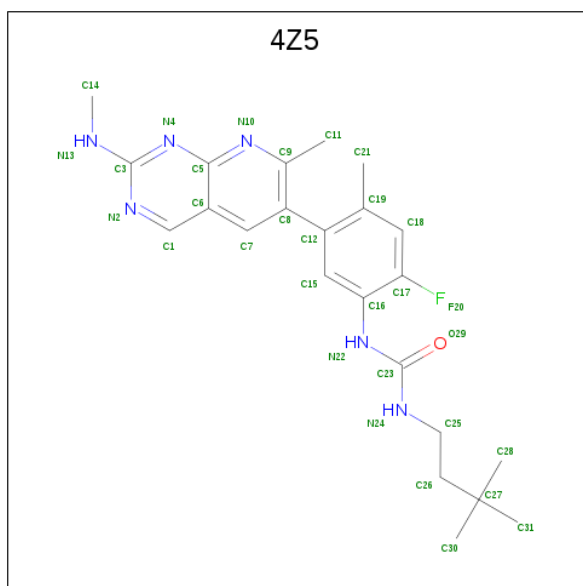
Chain	Residue	Modelled	Actual	Comment	Reference
A	419	MET	-	initiating methionine	UNP P15056
A	420	ASP	-	expression tag	UNP P15056
A	421	ARG	-	expression tag	UNP P15056
A	422	GLY	-	expression tag	UNP P15056
A	423	SER	-	expression tag	UNP P15056
A	424	HIS	-	expression tag	UNP P15056
A	425	HIS	-	expression tag	UNP P15056
A	426	HIS	-	expression tag	UNP P15056
A	427	HIS	-	expression tag	UNP P15056
A	428	HIS	-	expression tag	UNP P15056
A	429	HIS	-	expression tag	UNP P15056
A	430	GLY	-	expression tag	UNP P15056
A	599	GLU	VAL	engineered mutation	UNP P15056
B	419	MET	-	initiating methionine	UNP P15056
B	420	ASP	-	expression tag	UNP P15056
B	421	ARG	-	expression tag	UNP P15056
B	422	GLY	-	expression tag	UNP P15056
B	423	SER	-	expression tag	UNP P15056
B	424	HIS	-	expression tag	UNP P15056
B	425	HIS	-	expression tag	UNP P15056
B	426	HIS	-	expression tag	UNP P15056
B	427	HIS	-	expression tag	UNP P15056
B	428	HIS	-	expression tag	UNP P15056
B	429	HIS	-	expression tag	UNP P15056
B	430	GLY	-	expression tag	UNP P15056

Continued on next page...

Continued from previous page...

Chain	Residue	Modelled	Actual	Comment	Reference
B	599	GLU	VAL	engineered mutation	UNP P15056

- Molecule 2 is 1-(3,3-dimethylbutyl)-3-{2-fluoro-4-methyl-5-[7-methyl-2-(methylamino)pyridin-2-yl]phenyl}urea (three-letter code: 4Z5) (formula: C₂₃H₂₉FN₆O).



Mol	Chain	Residues	Atoms					ZeroOcc	AltConf
2	A	1	Total	C	F	N	O	0	0
			31	23	1	6	1		
2	B	1	Total	C	F	N	O	0	0
			31	23	1	6	1		

- Molecule 3 is CHLORIDE ION (three-letter code: CL) (formula: Cl).

Mol	Chain	Residues	Atoms		ZeroOcc	AltConf
3	B	1	Total	Cl	0	0
			1	1		

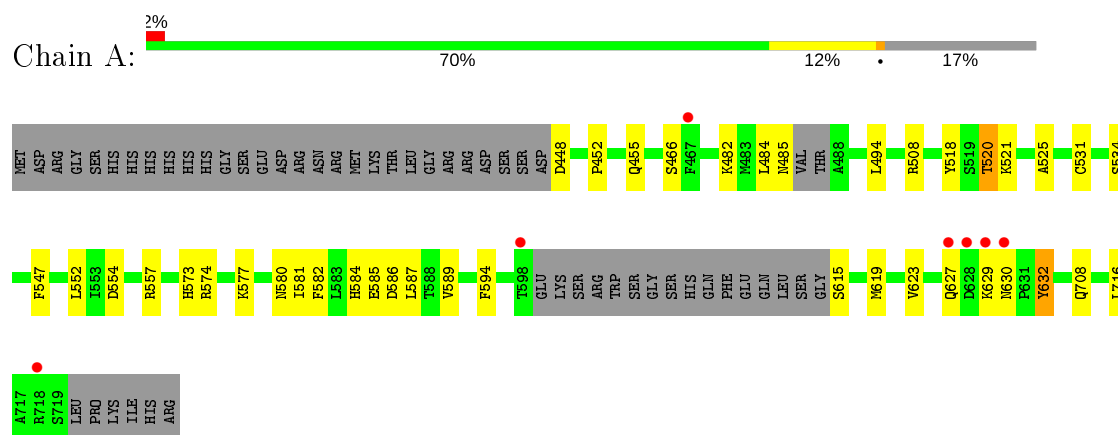
- Molecule 4 is water.

Mol	Chain	Residues	Atoms		ZeroOcc	AltConf
4	A	80	Total	O	0	0
			80	80		
4	B	55	Total	O	0	0
			55	55		

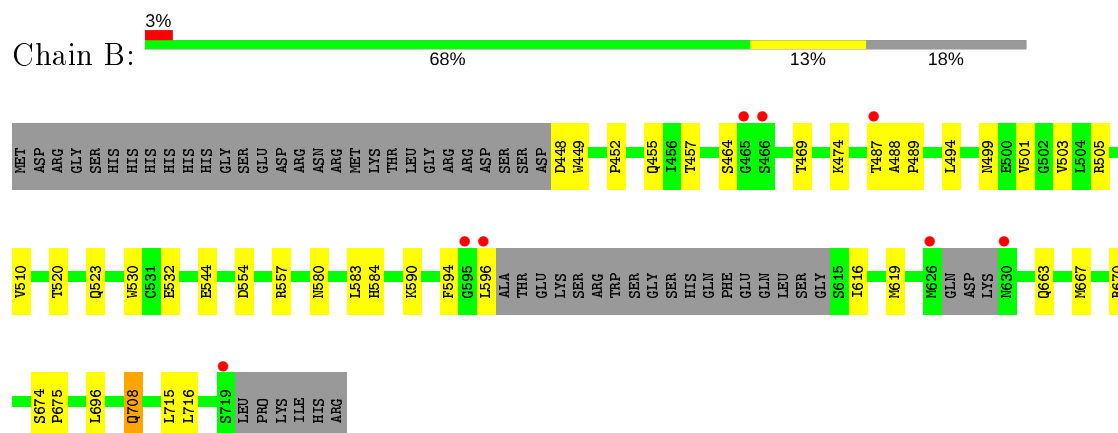
3 Residue-property plots [i](#)

These plots are drawn for all protein, RNA and DNA chains in the entry. The first graphic for a chain summarises the proportions of the various outlier classes displayed in the second graphic. The second graphic shows the sequence view annotated by issues in geometry and electron density. Residues are color-coded according to the number of geometric quality criteria for which they contain at least one outlier: green = 0, yellow = 1, orange = 2 and red = 3 or more. A red dot above a residue indicates a poor fit to the electron density ($RSRZ > 2$). Stretches of 2 or more consecutive residues without any outlier are shown as a green connector. Residues present in the sample, but not in the model, are shown in grey.

- Molecule 1: Serine/threonine-protein kinase B-raf



- Molecule 1: Serine/threonine-protein kinase B-raf



4 Data and refinement statistics

Property	Value	Source
Space group	P 41 21 2	Depositor
Cell constants a, b, c, α , β , γ	93.88Å 93.88Å 165.55Å 90.00° 90.00° 90.00°	Depositor
Resolution (Å)	50.00 – 2.70 19.62 – 2.70	Depositor EDS
% Data completeness (in resolution range)	98.9 (50.00-2.70) 98.9 (19.62-2.70)	Depositor EDS
R_{merge}	0.13	Depositor
R_{sym}	(Not available)	Depositor
$\langle I/\sigma(I) \rangle$ ¹	3.00 (at 2.71Å)	Xtriage
Refinement program	REFMAC 5.5.0109	Depositor
R, R_{free}	0.194 , 0.238 0.195 , 0.198	Depositor DCC
R_{free} test set	1065 reflections (5.14%)	wwPDB-VP
Wilson B-factor (Å ²)	33.6	Xtriage
Anisotropy	0.115	Xtriage
Bulk solvent k_{sol} (e/Å ³), B_{sol} (Å ²)	0.35 , 44.9	EDS
L-test for twinning ²	$\langle L \rangle = 0.51$, $\langle L^2 \rangle = 0.35$	Xtriage
Estimated twinning fraction	No twinning to report.	Xtriage
F_o, F_c correlation	0.94	EDS
Total number of atoms	4153	wwPDB-VP
Average B, all atoms (Å ²)	25.0	wwPDB-VP

Xtriage's analysis on translational NCS is as follows: *The analyses of the Patterson function reveals a significant off-origin peak that is 33.86 % of the origin peak, indicating pseudo-translational symmetry. The chance of finding a peak of this or larger height randomly in a structure without pseudo-translational symmetry is equal to 7.4744e-04. The detected translational NCS is most likely also responsible for the elevated intensity ratio.*

¹Intensities estimated from amplitudes.

²Theoretical values of $\langle |L| \rangle$, $\langle L^2 \rangle$ for acentric reflections are 0.5, 0.333 respectively for untwinned datasets, and 0.375, 0.2 for perfectly twinned datasets.

5 Model quality [i](#)

5.1 Standard geometry [i](#)

Bond lengths and bond angles in the following residue types are not validated in this section: 4Z5, CL

The Z score for a bond length (or angle) is the number of standard deviations the observed value is removed from the expected value. A bond length (or angle) with $|Z| > 5$ is considered an outlier worth inspection. RMSZ is the root-mean-square of all Z scores of the bond lengths (or angles).

Mol	Chain	Bond lengths		Bond angles	
		RMSZ	$\# Z > 5$	RMSZ	$\# Z > 5$
1	A	1.05	2/2043 (0.1%)	0.79	0/2764
1	B	0.76	0/2003	0.76	1/2712 (0.0%)
All	All	0.92	2/4046 (0.0%)	0.78	1/5476 (0.0%)

All (2) bond length outliers are listed below:

Mol	Chain	Res	Type	Atoms	Z	Observed(Å)	Ideal(Å)
1	A	632	TYR	CD2-CE2	-5.44	1.31	1.39
1	A	518	TYR	CD2-CE2	-5.34	1.31	1.39

All (1) bond angle outliers are listed below:

Mol	Chain	Res	Type	Atoms	Z	Observed(°)	Ideal(°)
1	B	494	LEU	CA-CB-CG	5.68	128.36	115.30

There are no chirality outliers.

There are no planarity outliers.

5.2 Too-close contacts [i](#)

In the following table, the Non-H and H(model) columns list the number of non-hydrogen atoms and hydrogen atoms in the chain respectively. The H(added) column lists the number of hydrogen atoms added and optimized by MolProbity. The Clashes column lists the number of clashes within the asymmetric unit, whereas Symm-Clashes lists symmetry related clashes.

Mol	Chain	Non-H	H(model)	H(added)	Clashes	Symm-Clashes
1	A	1997	0	1990	20	0
1	B	1958	0	1946	24	0
2	A	31	0	29	0	0

Continued on next page...

Continued from previous page...

Mol	Chain	Non-H	H(model)	H(added)	Clashes	Symm-Clashes
2	B	31	0	29	0	0
3	B	1	0	0	1	0
4	A	80	0	0	0	0
4	B	55	0	0	2	0
All	All	4153	0	3994	43	0

The all-atom clashscore is defined as the number of clashes found per 1000 atoms (including hydrogen atoms). The all-atom clashscore for this structure is 5.

All (43) close contacts within the same asymmetric unit are listed below, sorted by their clash magnitude.

Atom-1	Atom-2	Interatomic distance (Å)	Clash overlap (Å)
1:B:505:ARG:NH2	3:B:802:CL:CL	2.29	1.03
1:B:464:SER:HB3	1:B:469:THR:HG23	1.54	0.90
1:B:530:TRP:HE1	1:B:532:GLU:HG2	1.55	0.71
1:A:585:GLU:HA	1:A:585:GLU:OE1	1.95	0.66
1:A:627:GLN:HG2	1:A:627:GLN:O	1.97	0.65
1:B:675:PRO:HG2	1:B:696:LEU:HD13	1.77	0.64
1:A:554:ASP:OD1	1:A:557:ARG:NH2	2.34	0.61
1:B:670:ARG:NH1	4:B:901:HOH:O	2.35	0.59
1:B:530:TRP:NE1	1:B:532:GLU:HG2	2.18	0.58
1:A:581:ILE:HG23	1:A:589:VAL:HG13	1.87	0.55
1:A:484:LEU:O	1:A:485:ASN:HB3	2.07	0.54
1:A:585:GLU:O	1:A:586:ASP:HB2	2.08	0.53
1:A:573:HIS:O	1:A:574:ARG:HB2	2.06	0.53
1:A:452:PRO:HB2	1:A:455:GLN:NE2	2.25	0.51
1:B:674:SER:HB2	1:B:675:PRO:CD	2.41	0.50
1:A:508:ARG:HD2	1:B:449:TRP:CZ3	2.46	0.50
1:B:715:LEU:O	1:B:715:LEU:HD12	2.12	0.49
1:B:501:VAL:O	1:B:505:ARG:HG2	2.12	0.48
1:A:584:HIS:O	1:A:585:GLU:HB2	2.13	0.48
1:B:580:ASN:HA	1:B:594:PHE:HD1	1.80	0.46
1:B:532:GLU:H	1:B:584:HIS:CE1	2.33	0.46
1:B:583:LEU:HA	1:B:583:LEU:HD23	1.75	0.45
1:A:531:CYS:HB3	1:A:582:PHE:CE2	2.52	0.45
1:A:619:MET:HG2	1:A:623:VAL:CG1	2.47	0.45
1:A:547:PHE:HB2	1:A:552:LEU:HD21	1.99	0.44
1:B:554:ASP:OD1	1:B:557:ARG:NH1	2.41	0.44
1:B:452:PRO:HG2	1:B:455:GLN:NE2	2.33	0.44
1:A:580:ASN:HA	1:A:594:PHE:HD1	1.83	0.44
1:A:574:ARG:HG2	1:A:632:TYR:CD2	2.53	0.43

Continued on next page...

Continued from previous page...

Atom-1	Atom-2	Interatomic distance (Å)	Clash overlap (Å)
1:A:520:THR:O	1:A:520:THR:HG23	2.18	0.43
1:A:629:LYS:HA	1:A:630:ASN:C	2.38	0.43
1:B:452:PRO:HG2	1:B:455:GLN:HE22	1.83	0.43
1:B:457:THR:HB	1:B:474:LYS:HB2	2.00	0.43
1:A:582:PHE:O	1:A:589:VAL:HA	2.19	0.43
1:B:663:GLN:O	1:B:667:MET:CG	2.68	0.41
1:A:482:LYS:O	1:A:525:ALA:HA	2.20	0.41
1:A:547:PHE:HB2	1:A:552:LEU:CD2	2.50	0.41
1:B:488:ALA:HA	1:B:489:PRO:HD2	1.93	0.41
1:B:674:SER:HB2	1:B:675:PRO:HD2	2.01	0.41
1:B:708:GLN:HB2	4:B:934:HOH:O	2.21	0.41
1:B:499:ASN:O	1:B:503:VAL:HG23	2.22	0.40
1:B:510:VAL:O	1:B:590:LYS:NZ	2.39	0.40
1:B:616:ILE:HA	1:B:619:MET:HG3	2.02	0.40

There are no symmetry-related clashes.

5.3 Torsion angles [i](#)

5.3.1 Protein backbone [i](#)

In the following table, the Percentiles column shows the percent Ramachandran outliers of the chain as a percentile score with respect to all X-ray entries followed by that with respect to entries of similar resolution.

The Analysed column shows the number of residues for which the backbone conformation was analysed, and the total number of residues.

Mol	Chain	Analysed	Favoured	Allowed	Outliers	Percentiles	
1	A	249/307 (81%)	240 (96%)	9 (4%)	0	100	100
1	B	246/307 (80%)	237 (96%)	9 (4%)	0	100	100
All	All	495/614 (81%)	477 (96%)	18 (4%)	0	100	100

There are no Ramachandran outliers to report.

5.3.2 Protein sidechains [i](#)

In the following table, the Percentiles column shows the percent sidechain outliers of the chain as a percentile score with respect to all X-ray entries followed by that with respect to entries of similar resolution.

The Analysed column shows the number of residues for which the sidechain conformation was analysed, and the total number of residues.

Mol	Chain	Analysed	Rotameric	Outliers	Percentiles	
1	A	213/271 (79%)	201 (94%)	12 (6%)	21	45
1	B	208/271 (77%)	200 (96%)	8 (4%)	33	62
All	All	421/542 (78%)	401 (95%)	20 (5%)	27	53

All (20) residues with a non-rotameric sidechain are listed below:

Mol	Chain	Res	Type
1	A	448	ASP
1	A	466	SER
1	A	494	LEU
1	A	520	THR
1	A	521	LYS
1	A	534	SER
1	A	577	LYS
1	A	587	LEU
1	A	615	SER
1	A	708[A]	GLN
1	A	708[B]	GLN
1	A	716	LEU
1	B	448	ASP
1	B	487	THR
1	B	520	THR
1	B	523	GLN
1	B	544	GLU
1	B	596	LEU
1	B	708	GLN
1	B	716	LEU

Some sidechains can be flipped to improve hydrogen bonding and reduce clashes. All (2) such sidechains are listed below:

Mol	Chain	Res	Type
1	A	495	GLN
1	A	499	ASN

5.3.3 RNA ⓘ

There are no RNA molecules in this entry.

5.4 Non-standard residues in protein, DNA, RNA chains [i](#)

There are no non-standard protein/DNA/RNA residues in this entry.

5.5 Carbohydrates [i](#)

There are no carbohydrates in this entry.

5.6 Ligand geometry [i](#)

Of 3 ligands modelled in this entry, 1 is monoatomic - leaving 2 for Mogul analysis.

In the following table, the Counts columns list the number of bonds (or angles) for which Mogul statistics could be retrieved, the number of bonds (or angles) that are observed in the model and the number of bonds (or angles) that are defined in the Chemical Component Dictionary. The Link column lists molecule types, if any, to which the group is linked. The Z score for a bond length (or angle) is the number of standard deviations the observed value is removed from the expected value. A bond length (or angle) with $|Z| > 2$ is considered an outlier worth inspection. RMSZ is the root-mean-square of all Z scores of the bond lengths (or angles).

Mol	Type	Chain	Res	Link	Bond lengths			Bond angles		
					Counts	RMSZ	# Z > 2	Counts	RMSZ	# Z > 2
2	4Z5	B	801	-	33,33,33	1.17	3 (9%)	46,48,48	1.82	11 (23%)
2	4Z5	A	900	-	33,33,33	1.17	3 (9%)	46,48,48	2.04	13 (28%)

In the following table, the Chirals column lists the number of chiral outliers, the number of chiral centers analysed, the number of these observed in the model and the number defined in the Chemical Component Dictionary. Similar counts are reported in the Torsion and Rings columns. '-' means no outliers of that kind were identified.

Mol	Type	Chain	Res	Link	Chirals	Torsions	Rings
2	4Z5	B	801	-	-	0/17/17/17	0/3/3/3
2	4Z5	A	900	-	-	0/17/17/17	0/3/3/3

All (6) bond length outliers are listed below:

Mol	Chain	Res	Type	Atoms	Z	Observed(Å)	Ideal(Å)
2	A	900	4Z5	C9-N10	3.59	1.36	1.32
2	B	801	4Z5	C9-N10	3.18	1.36	1.32
2	A	900	4Z5	C16-N22	-2.97	1.36	1.41
2	B	801	4Z5	C3-N13	2.85	1.36	1.34
2	A	900	4Z5	C3-N13	2.46	1.36	1.34
2	B	801	4Z5	C16-N22	-2.37	1.37	1.41

All (24) bond angle outliers are listed below:

Mol	Chain	Res	Type	Atoms	Z	Observed(°)	Ideal(°)
2	A	900	4Z5	N2-C3-N4	-6.80	119.95	126.52
2	B	801	4Z5	N2-C3-N4	-5.44	121.26	126.52
2	A	900	4Z5	C3-N4-C5	5.40	121.41	115.28
2	B	801	4Z5	C3-N4-C5	4.57	120.47	115.28
2	A	900	4Z5	N13-C3-N2	3.75	120.62	117.00
2	A	900	4Z5	C6-C5-N4	-3.67	118.97	122.42
2	B	801	4Z5	C6-C5-N4	-3.43	119.19	122.42
2	B	801	4Z5	N13-C3-N4	3.28	120.11	116.96
2	A	900	4Z5	C1-N2-C3	3.25	120.70	115.88
2	B	801	4Z5	C9-N10-C5	3.17	121.21	117.77
2	A	900	4Z5	C8-C9-N10	-2.60	120.12	122.31
2	A	900	4Z5	N13-C3-N4	2.57	119.43	116.96
2	B	801	4Z5	C7-C8-C12	2.45	122.71	117.09
2	B	801	4Z5	C1-N2-C3	2.43	119.48	115.88
2	A	900	4Z5	C25-N24-C23	2.39	126.53	121.75
2	A	900	4Z5	C14-N13-C3	-2.30	120.81	123.59
2	B	801	4Z5	C6-C1-N2	-2.30	119.76	124.08
2	A	900	4Z5	C9-N10-C5	2.26	120.22	117.77
2	A	900	4Z5	C6-C1-N2	-2.20	119.94	124.08
2	A	900	4Z5	C8-C7-C6	-2.18	118.42	121.83
2	B	801	4Z5	C8-C12-C19	-2.17	116.09	121.76
2	A	900	4Z5	C7-C6-C5	2.15	119.72	117.98
2	B	801	4Z5	C15-C16-C17	2.15	119.73	117.75
2	B	801	4Z5	C6-C5-N10	-2.11	120.43	122.42

There are no chirality outliers.

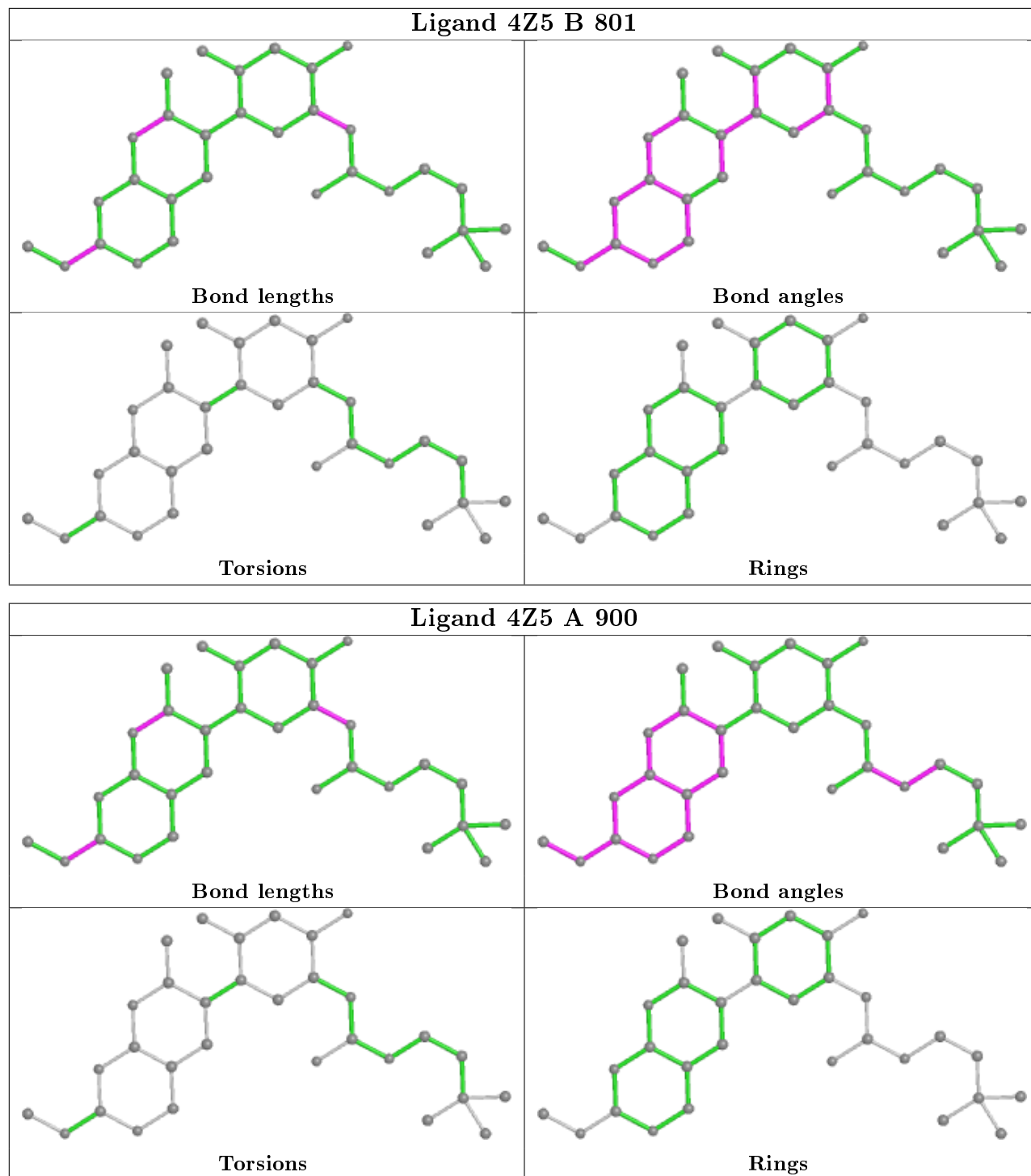
There are no torsion outliers.

There are no ring outliers.

No monomer is involved in short contacts.

The following is a two-dimensional graphical depiction of Mogul quality analysis of bond lengths, bond angles, torsion angles, and ring geometry for all instances of the Ligand of Interest. In addition, ligands with molecular weight > 250 and outliers as shown on the validation Tables will also be included. For torsion angles, if less than 5% of the Mogul distribution of torsion angles is within 10 degrees of the torsion angle in question, then that torsion angle is considered an outlier. Any bond that is central to one or more torsion angles identified as an outlier by Mogul will be highlighted in the graph. For rings, the root-mean-square deviation (RMSD) between the ring in question and similar rings identified by Mogul is calculated over all ring torsion angles. If the average RMSD is greater than 60 degrees and the minimal RMSD between the ring in question and any Mogul-identified rings is also greater than 60 degrees, then that ring is considered an outlier. The outliers are highlighted in purple. The color gray indicates Mogul did not find sufficient

equivalents in the CSD to analyse the geometry.



5.7 Other polymers ⓘ

There are no such residues in this entry.

5.8 Polymer linkage issues

There are no chain breaks in this entry.

6 Fit of model and data [i](#)

6.1 Protein, DNA and RNA chains [i](#)

In the following table, the column labelled ‘#RSRZ> 2’ contains the number (and percentage) of RSRZ outliers, followed by percent RSRZ outliers for the chain as percentile scores relative to all X-ray entries and entries of similar resolution. The OWAB column contains the minimum, median, 95th percentile and maximum values of the occupancy-weighted average B-factor per residue. The column labelled ‘Q< 0.9’ lists the number of (and percentage) of residues with an average occupancy less than 0.9.

Mol	Chain	Analysed	<RSRZ>	#RSRZ>2	OWAB(Å ²)	Q<0.9
1	A	254/307 (82%)	-0.44	7 (2%) 53 54	10, 23, 47, 57	0
1	B	251/307 (81%)	-0.42	8 (3%) 47 48	11, 23, 47, 60	0
All	All	505/614 (82%)	-0.43	15 (2%) 50 51	10, 23, 47, 60	0

All (15) RSRZ outliers are listed below:

Mol	Chain	Res	Type	RSRZ
1	B	487	THR	4.1
1	B	630	ASN	3.5
1	B	626	MET	3.3
1	A	628	ASP	3.0
1	B	466	SER	3.0
1	A	627	GLN	3.0
1	B	719	SER	3.0
1	A	629	LYS	2.8
1	B	596	LEU	2.8
1	A	630	ASN	2.7
1	A	467	PHE	2.4
1	B	465	GLY	2.3
1	B	595	GLY	2.3
1	A	718	ARG	2.2
1	A	598	THR	2.1

6.2 Non-standard residues in protein, DNA, RNA chains [i](#)

There are no non-standard protein/DNA/RNA residues in this entry.

6.3 Carbohydrates [i](#)

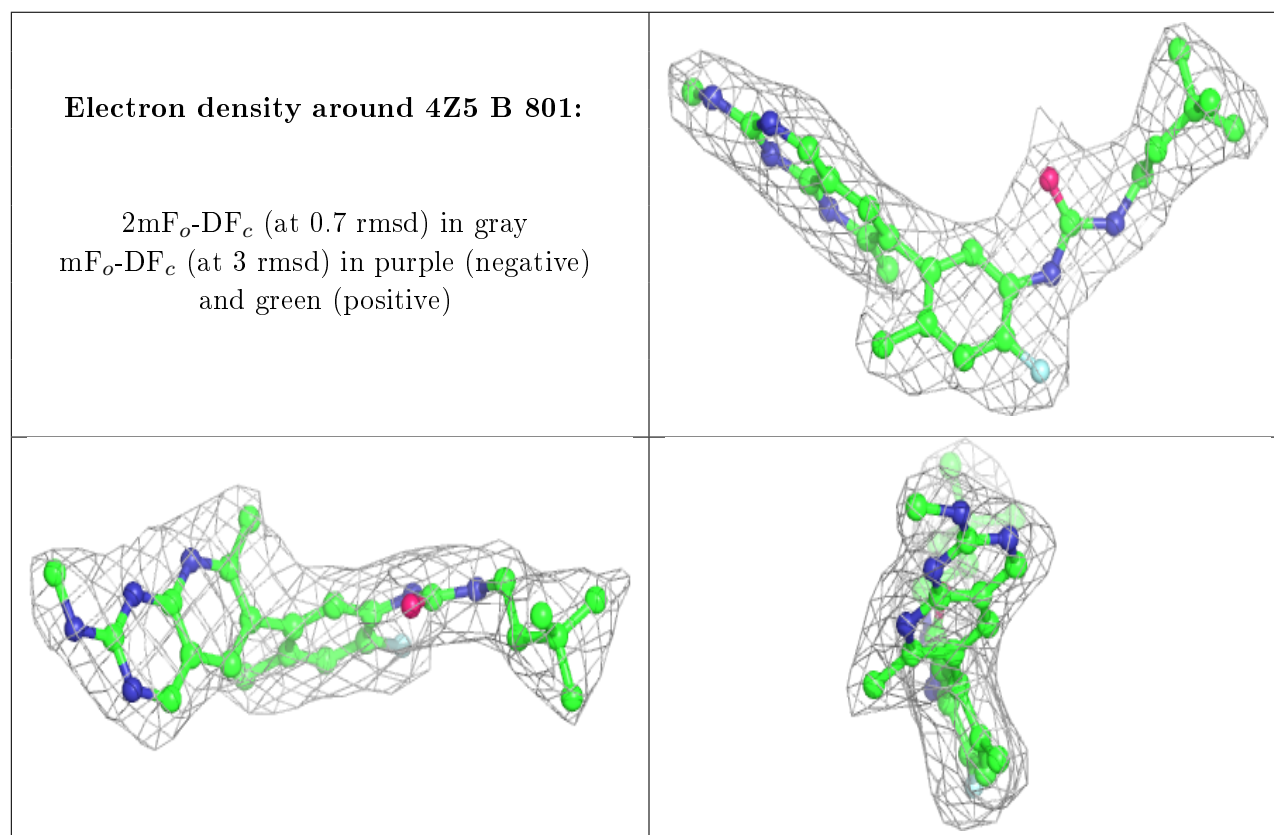
There are no carbohydrates in this entry.

6.4 Ligands ⓘ

In the following table, the Atoms column lists the number of modelled atoms in the group and the number defined in the chemical component dictionary. The B-factors column lists the minimum, median, 95th percentile and maximum values of B factors of atoms in the group. The column labelled 'Q< 0.9' lists the number of atoms with occupancy less than 0.9.

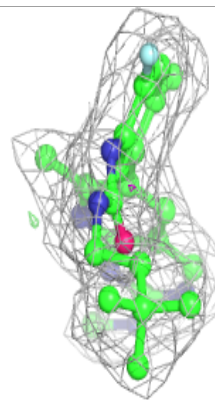
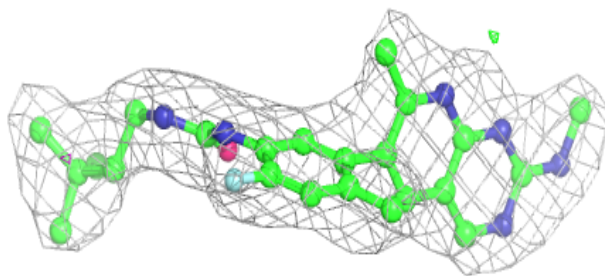
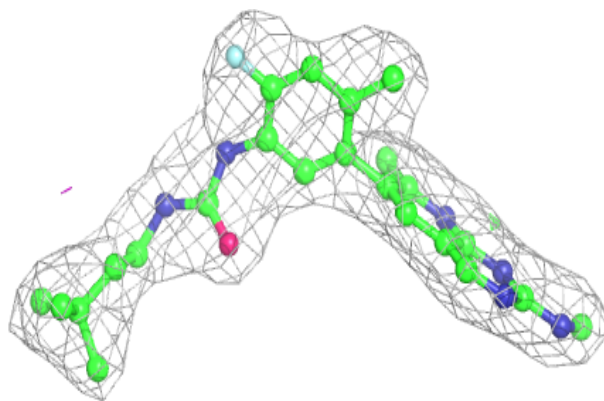
Mol	Type	Chain	Res	Atoms	RSCC	RSR	B-factors(Å ²)	Q<0.9
3	CL	B	802	1/1	0.97	0.10	50,50,50,50	0
2	4Z5	B	801	31/31	0.98	0.10	12,15,18,19	0
2	4Z5	A	900	31/31	0.98	0.10	6,11,15,16	0

The following is a graphical depiction of the model fit to experimental electron density of all instances of the Ligand of Interest. In addition, ligands with molecular weight > 250 and outliers as shown on the geometry validation Tables will also be included. Each fit is shown from different orientation to approximate a three-dimensional view.



Electron density around 4Z5 A 900:

$2mF_o-DF_c$ (at 0.7 rmsd) in gray
 mF_o-DF_c (at 3 rmsd) in purple (negative)
and green (positive)



6.5 Other polymers [i](#)

There are no such residues in this entry.