



Full wwPDB X-ray Structure Validation Report ⓘ

May 22, 2020 – 04:03 pm BST

PDB ID : 1CAZ
Title : WILD-TYPE AND E106Q MUTANT CARBONIC ANHYDRASE COM-
PLEXED WITH ACETATE
Authors : Hakansson, K.; Briand, C.; Zaitsev, V.; Xue, Y.; Liljas, A.
Deposited on : 1993-02-26
Resolution : 1.90 Å(reported)

This is a Full wwPDB X-ray Structure Validation Report for a publicly released PDB entry.

We welcome your comments at validation@mail.wwpdb.org

A user guide is available at

<https://www.wwpdb.org/validation/2017/XrayValidationReportHelp>

with specific help available everywhere you see the ⓘ symbol.

The following versions of software and data (see [references ⓘ](#)) were used in the production of this report:

MolProbity	:	4.02b-467
Mogul	:	1.8.5 (274361), CSD as541be (2020)
Xtriage (Phenix)	:	NOT EXECUTED
EDS	:	NOT EXECUTED
Percentile statistics	:	20191225.v01 (using entries in the PDB archive December 25th 2019)
Ideal geometry (proteins)	:	Engh & Huber (2001)
Ideal geometry (DNA, RNA)	:	Parkinson et al. (1996)
Validation Pipeline (wwPDB-VP)	:	2.11

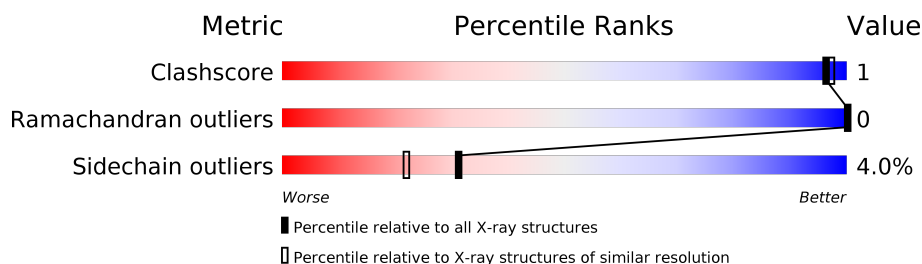
1 Overall quality at a glance

The following experimental techniques were used to determine the structure:

X-RAY DIFFRACTION

The reported resolution of this entry is 1.90 Å.


Percentile scores (ranging between 0-100) for global validation metrics of the entry are shown in the following graphic. The table shows the number of entries on which the scores are based.



Metric	Whole archive (#Entries)	Similar resolution (#Entries, resolution range(Å))
Clashscore	141614	6847 (1.90-1.90)
Ramachandran outliers	138981	6760 (1.90-1.90)
Sidechain outliers	138945	6760 (1.90-1.90)

The table below summarises the geometric issues observed across the polymeric chains and their fit to the electron density. The red, orange, yellow and green segments on the lower bar indicate the fraction of residues that contain outliers for ≥ 3 , 2, 1 and 0 types of geometric quality criteria respectively. A grey segment represents the fraction of residues that are not modelled. The numeric value for each fraction is indicated below the corresponding segment, with a dot representing fractions $\leq 5\%$.

Note EDS was not executed.

Mol	Chain	Length	Quality of chain
1	A	259	

2 Entry composition [i](#)

There are 4 unique types of molecules in this entry. The entry contains 2291 atoms, of which 0 are hydrogens and 0 are deuteriums.

In the tables below, the ZeroOcc column contains the number of atoms modelled with zero occupancy, the AltConf column contains the number of residues with at least one atom in alternate conformation and the Trace column contains the number of residues modelled with at most 2 atoms.

- Molecule 1 is a protein called CARBONIC ANHYDRASE II.

Mol	Chain	Residues	Atoms					ZeroOcc	AltConf	Trace
1	A	258	Total	C	N	O	S	0	4	0
			2075	1330	359	383	3			

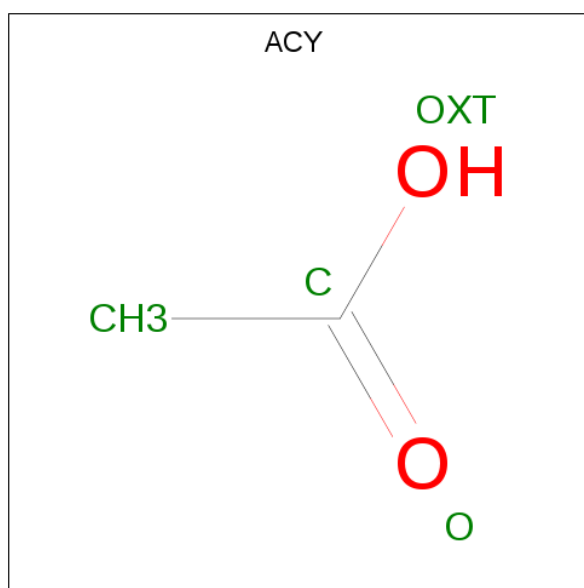
There is a discrepancy between the modelled and reference sequences:

Chain	Residue	Modelled	Actual	Comment	Reference
A	106	GLN	GLU	CONFLICT	UNP P00918

- Molecule 2 is ZINC ION (three-letter code: ZN) (formula: Zn).

Mol	Chain	Residues	Atoms		ZeroOcc	AltConf
2	A	2	Total	Zn	0	0
			2	2		

- Molecule 3 is ACETIC ACID (three-letter code: ACY) (formula: C₂H₄O₂).



Mol	Chain	Residues	Atoms			ZeroOcc	AltConf
3	A	1	Total	C	O	0	0
			4	2	2		

- Molecule 4 is water.

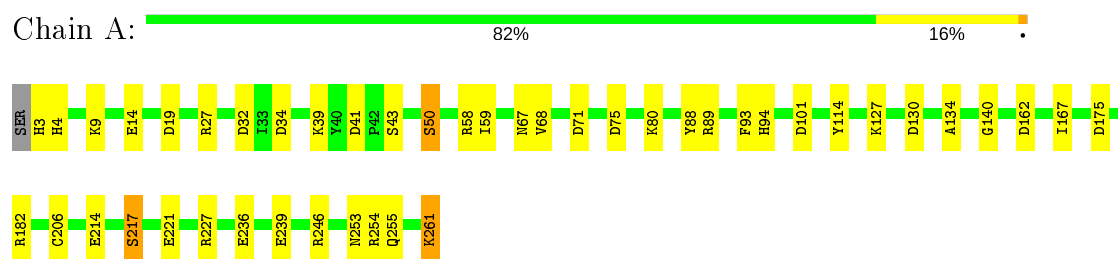
Mol	Chain	Residues	Atoms		ZeroOcc	AltConf
4	A	210	Total	O	0	0
			210	210		

3 Residue-property plots

These plots are drawn for all protein, RNA and DNA chains in the entry. The first graphic for a chain summarises the proportions of the various outlier classes displayed in the second graphic. The second graphic shows the sequence view annotated by issues in geometry. Residues are color-coded according to the number of geometric quality criteria for which they contain at least one outlier: green = 0, yellow = 1, orange = 2 and red = 3 or more. Stretches of 2 or more consecutive residues without any outlier are shown as a green connector. Residues present in the sample, but not in the model, are shown in grey.

Note EDS was not executed.

• Molecule 1: CARBONIC ANHYDRASE II



4 Data and refinement statistics

Xtriage (Phenix) and EDS were not executed - this section is therefore incomplete.

Property	Value	Source
Space group	P 1 21 1	Depositor
Cell constants a, b, c, α , β , γ	42.70 Å 41.70 Å 73.00 Å 90.00° 104.60° 90.00°	Depositor
Resolution (Å)	(Not available) – 1.90	Depositor
% Data completeness (in resolution range)	(Not available) ((Not available)-1.90)	Depositor
R_{merge}	(Not available)	Depositor
R_{sym}	(Not available)	Depositor
Refinement program	PROFFT	Depositor
R, R_{free}	0.153 , (Not available)	Depositor
Estimated twinning fraction	No twinning to report.	Xtriage
Total number of atoms	2291	wwPDB-VP
Average B, all atoms (Å ²)	12.0	wwPDB-VP

5 Model quality [i](#)

5.1 Standard geometry [i](#)

Bond lengths and bond angles in the following residue types are not validated in this section: ZN, ACY

The Z score for a bond length (or angle) is the number of standard deviations the observed value is removed from the expected value. A bond length (or angle) with $|Z| > 5$ is considered an outlier worth inspection. RMSZ is the root-mean-square of all Z scores of the bond lengths (or angles).

Mol	Chain	Bond lengths		Bond angles	
		RMSZ	$\# Z > 5$	RMSZ	$\# Z > 5$
1	A	1.11	1/2156 (0.0%)	1.75	43/2924 (1.5%)

All (1) bond length outliers are listed below:

Mol	Chain	Res	Type	Atoms	Z	Observed(Å)	Ideal(Å)
1	A	217	SER	CA-CB	5.18	1.60	1.52

All (43) bond angle outliers are listed below:

Mol	Chain	Res	Type	Atoms	Z	Observed(°)	Ideal(°)
1	A	89	ARG	NE-CZ-NH2	-13.74	113.43	120.30
1	A	89	ARG	NE-CZ-NH1	12.40	126.50	120.30
1	A	246	ARG	NE-CZ-NH1	10.72	125.66	120.30
1	A	101	ASP	CB-CG-OD1	10.35	127.61	118.30
1	A	254	ARG	NE-CZ-NH2	-8.95	115.83	120.30
1	A	175	ASP	CB-CG-OD1	8.30	125.77	118.30
1	A	162	ASP	CB-CG-OD2	-8.29	110.84	118.30
1	A	34	ASP	CB-CG-OD2	8.25	125.72	118.30
1	A	14[A]	GLU	CB-CG-CD	7.83	135.35	114.20
1	A	14[B]	GLU	CB-CG-CD	7.83	135.35	114.20
1	A	93	PHE	CB-CG-CD2	-7.59	115.49	120.80
1	A	162	ASP	CB-CG-OD1	7.39	124.95	118.30
1	A	182	ARG	NE-CZ-NH1	6.91	123.75	120.30
1	A	221	GLU	CG-CD-OE1	6.70	131.70	118.30
1	A	71	ASP	CB-CG-OD1	6.51	124.16	118.30
1	A	19	ASP	CB-CG-OD2	-6.25	112.67	118.30
1	A	93	PHE	CB-CG-CD1	6.17	125.12	120.80
1	A	130	ASP	CB-CG-OD2	6.14	123.83	118.30
1	A	58	ARG	NE-CZ-NH1	-6.13	117.23	120.30
1	A	4[A]	HIS	CA-CB-CG	6.04	123.86	113.60

Continued on next page...

Continued from previous page...

Mol	Chain	Res	Type	Atoms	Z	Observed(°)	Ideal(°)
1	A	4[B]	HIS	CA-CB-CG	6.04	123.86	113.60
1	A	227	ARG	NE-CZ-NH1	6.02	123.31	120.30
1	A	50	SER	N-CA-CB	5.94	119.41	110.50
1	A	34	ASP	OD1-CG-OD2	-5.89	112.11	123.30
1	A	217	SER	CB-CA-C	-5.83	99.02	110.10
1	A	27	ARG	CA-CB-CG	5.83	126.23	113.40
1	A	236	GLU	CG-CD-OE1	5.83	129.95	118.30
1	A	58	ARG	N-CA-CB	-5.77	100.21	110.60
1	A	236	GLU	CA-CB-CG	5.71	125.96	113.40
1	A	214	GLU	OE1-CD-OE2	-5.67	116.50	123.30
1	A	75	ASP	CB-CG-OD1	5.63	123.37	118.30
1	A	41	ASP	CB-CG-OD2	5.62	123.36	118.30
1	A	3	HIS	CA-CB-CG	5.59	123.11	113.60
1	A	88	TYR	CB-CG-CD2	-5.57	117.66	121.00
1	A	246	ARG	NH1-CZ-NH2	-5.51	113.34	119.40
1	A	206[A]	CYS	N-CA-CB	-5.47	100.76	110.60
1	A	206[B]	CYS	N-CA-CB	-5.47	100.76	110.60
1	A	114	TYR	CB-CG-CD1	-5.44	117.74	121.00
1	A	68	VAL	CG1-CB-CG2	5.29	119.36	110.90
1	A	32	ASP	CB-CG-OD2	-5.28	113.55	118.30
1	A	261	LYS	CA-CB-CG	5.20	124.84	113.40
1	A	93	PHE	N-CA-CB	5.16	119.88	110.60
1	A	127	LYS	CA-CB-CG	5.13	124.70	113.40

There are no chirality outliers.

There are no planarity outliers.

5.2 Too-close contacts ⓘ

In the following table, the Non-H and H(model) columns list the number of non-hydrogen atoms and hydrogen atoms in the chain respectively. The H(added) column lists the number of hydrogen atoms added and optimized by MolProbity. The Clashes column lists the number of clashes within the asymmetric unit, whereas Symm-Clashes lists symmetry related clashes.

Mol	Chain	Non-H	H(model)	H(added)	Clashes	Symm-Clashes
1	A	2075	0	2021	4	0
2	A	2	0	0	0	0
3	A	4	0	3	0	0
4	A	210	0	0	1	0
All	All	2291	0	2024	4	0

The all-atom clashscore is defined as the number of clashes found per 1000 atoms (including hydrogen atoms). The all-atom clashscore for this structure is 1.

All (4) close contacts within the same asymmetric unit are listed below, sorted by their clash magnitude.

Atom-1	Atom-2	Interatomic distance (Å)	Clash overlap (Å)
1:A:59:ILE:HG12	1:A:167:ILE:HD13	1.95	0.48
1:A:134:ALA:O	1:A:140:GLY:HA3	2.16	0.45
1:A:67:ASN:HD22	1:A:94:HIS:HB3	1.84	0.43
1:A:80:LYS:HG2	4:A:416:HOH:O	2.20	0.42

There are no symmetry-related clashes.

5.3 Torsion angles [i](#)

5.3.1 Protein backbone [i](#)

In the following table, the Percentiles column shows the percent Ramachandran outliers of the chain as a percentile score with respect to all X-ray entries followed by that with respect to entries of similar resolution.

The Analysed column shows the number of residues for which the backbone conformation was analysed, and the total number of residues.

Mol	Chain	Analysed	Favoured	Allowed	Outliers	Percentiles	
1	A	260/259 (100%)	249 (96%)	11 (4%)	0	100	100

There are no Ramachandran outliers to report.

5.3.2 Protein sidechains [i](#)

In the following table, the Percentiles column shows the percent sidechain outliers of the chain as a percentile score with respect to all X-ray entries followed by that with respect to entries of similar resolution.

The Analysed column shows the number of residues for which the sidechain conformation was analysed, and the total number of residues.

Mol	Chain	Analysed	Rotameric	Outliers	Percentiles	
1	A	227/224 (101%)	218 (96%)	9 (4%)	31	22

All (9) residues with a non-rotameric sidechain are listed below:

Mol	Chain	Res	Type
1	A	9	LYS
1	A	39	LYS
1	A	43	SER
1	A	50	SER
1	A	217	SER
1	A	239	GLU
1	A	253	ASN
1	A	255	GLN
1	A	261	LYS

Some sidechains can be flipped to improve hydrogen bonding and reduce clashes. All (2) such sidechains are listed below:

Mol	Chain	Res	Type
1	A	67	ASN
1	A	137	GLN

5.3.3 RNA [i](#)

There are no RNA molecules in this entry.

5.4 Non-standard residues in protein, DNA, RNA chains [i](#)

There are no non-standard protein/DNA/RNA residues in this entry.

5.5 Carbohydrates [i](#)

There are no carbohydrates in this entry.

5.6 Ligand geometry [i](#)

Of 3 ligands modelled in this entry, 2 are monoatomic - leaving 1 for Mogul analysis.

In the following table, the Counts columns list the number of bonds (or angles) for which Mogul statistics could be retrieved, the number of bonds (or angles) that are observed in the model and the number of bonds (or angles) that are defined in the Chemical Component Dictionary. The Link column lists molecule types, if any, to which the group is linked. The Z score for a bond length (or angle) is the number of standard deviations the observed value is removed from the expected value. A bond length (or angle) with $|Z| > 2$ is considered an outlier worth inspection. RMSZ is the root-mean-square of all Z scores of the bond lengths (or angles).

Mol	Type	Chain	Res	Link	Bond lengths			Bond angles		
					Counts	RMSZ	# Z > 2	Counts	RMSZ	# Z > 2
3	ACY	A	500	2	1,3,3	5.47	1 (100%)	0,3,3	0.00	-

All (1) bond length outliers are listed below:

Mol	Chain	Res	Type	Atoms	Z	Observed(Å)	Ideal(Å)
3	A	500	ACY	CH3-C	5.47	1.55	1.48

There are no bond angle outliers.

There are no chirality outliers.

There are no torsion outliers.

There are no ring outliers.

No monomer is involved in short contacts.

5.7 Other polymers [i](#)

There are no such residues in this entry.

5.8 Polymer linkage issues [i](#)

There are no chain breaks in this entry.

6 Fit of model and data ⓘ

6.1 Protein, DNA and RNA chains ⓘ

EDS was not executed - this section is therefore empty.

6.2 Non-standard residues in protein, DNA, RNA chains ⓘ

EDS was not executed - this section is therefore empty.

6.3 Carbohydrates ⓘ

EDS was not executed - this section is therefore empty.

6.4 Ligands ⓘ

EDS was not executed - this section is therefore empty.

6.5 Other polymers ⓘ

EDS was not executed - this section is therefore empty.