



Full wwPDB X-ray Structure Validation Report ⓘ

May 23, 2020 – 05:42 am BST

PDB ID : 2CAN
Title : HUMAN ORNITHINE AMINOTRANSFERASE COMPLEXED WITH L-CANALINE
Authors : Shah, S.A.; Shen, B.W.; Brunger, A.T.
Deposited on : 1997-05-29
Resolution : 2.30 Å(reported)

This is a Full wwPDB X-ray Structure Validation Report for a publicly released PDB entry.

We welcome your comments at validation@mail.wwpdb.org

A user guide is available at

<https://www.wwpdb.org/validation/2017/XrayValidationReportHelp>

with specific help available everywhere you see the ⓘ symbol.

The following versions of software and data (see [references ⓘ](#)) were used in the production of this report:

MolProbity : 4.02b-467
Mogul : 1.8.5 (274361), CSD as541be (2020)
Xtriage (Phenix) : 1.13
EDS : 2.11
Percentile statistics : 20191225.v01 (using entries in the PDB archive December 25th 2019)
Refmac : 5.8.0158
CCP4 : 7.0.044 (Gargrove)
Ideal geometry (proteins) : Engh & Huber (2001)
Ideal geometry (DNA, RNA) : Parkinson et al. (1996)
Validation Pipeline (wwPDB-VP) : 2.11

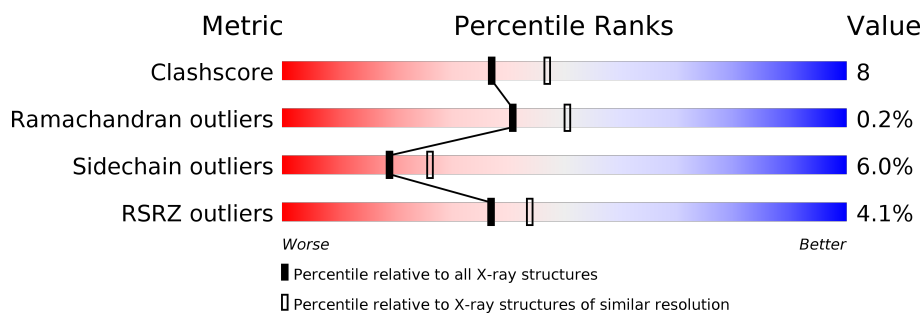
1 Overall quality at a glance

The following experimental techniques were used to determine the structure:

X-RAY DIFFRACTION

The reported resolution of this entry is 2.30 Å.

Percentile scores (ranging between 0-100) for global validation metrics of the entry are shown in the following graphic. The table shows the number of entries on which the scores are based.



Metric	Whole archive (#Entries)	Similar resolution (#Entries, resolution range(Å))
Clashscore	141614	5643 (2.30-2.30)
Ramachandran outliers	138981	5575 (2.30-2.30)
Sidechain outliers	138945	5575 (2.30-2.30)
RSRZ outliers	127900	4938 (2.30-2.30)

The table below summarises the geometric issues observed across the polymeric chains and their fit to the electron density. The red, orange, yellow and green segments on the lower bar indicate the fraction of residues that contain outliers for ≥ 3 , 2, 1 and 0 types of geometric quality criteria respectively. A grey segment represents the fraction of residues that are not modelled. The numeric value for each fraction is indicated below the corresponding segment, with a dot representing fractions $\leq 5\%$. The upper red bar (where present) indicates the fraction of residues that have poor fit to the electron density. The numeric value is given above the bar.

Mol	Chain	Length	Quality of chain
1	A	402	<div> <div>4%</div> <div> <div></div> <div>80%</div> <div>18%</div> <div>.</div> </div> </div>
1	B	402	<div> <div>3%</div> <div> <div></div> <div>82%</div> <div>15%</div> <div>.</div> </div> </div>
1	C	402	<div> <div>5%</div> <div> <div></div> <div>82%</div> <div>16%</div> <div>.</div> </div> </div>

2 Entry composition [i](#)

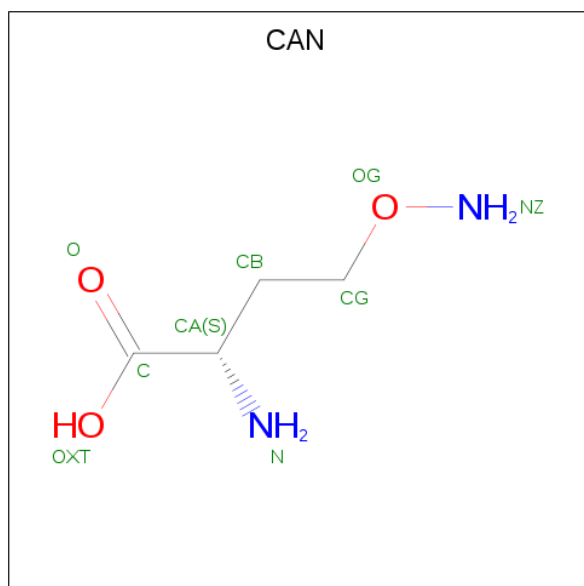
There are 4 unique types of molecules in this entry. The entry contains 11832 atoms, of which 2034 are hydrogens and 0 are deuteriums.

In the tables below, the ZeroOcc column contains the number of atoms modelled with zero occupancy, the AltConf column contains the number of residues with at least one atom in alternate conformation and the Trace column contains the number of residues modelled with at most 2 atoms.

- Molecule 1 is a protein called ORNITHINE AMINOTRANSFERASE.

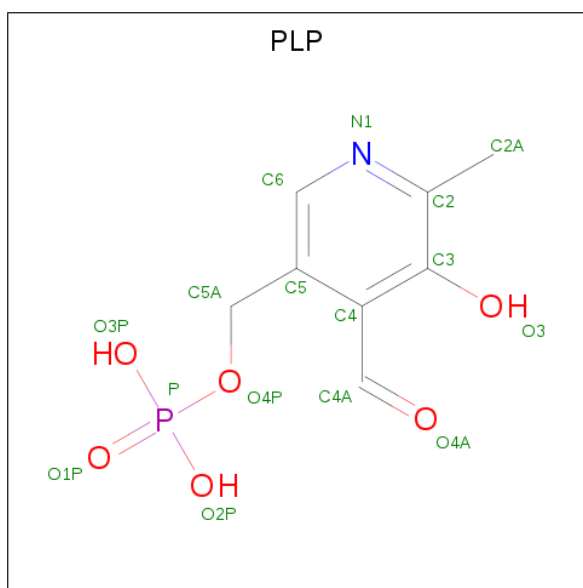
Mol	Chain	Residues	Atoms						ZeroOcc	AltConf	Trace
1	A	402	Total	C	H	N	O	S	0	0	0
			3828	2023	678	531	584	12			
1	B	402	Total	C	H	N	O	S	0	0	0
			3828	2023	678	531	584	12			
1	C	402	Total	C	H	N	O	S	0	0	0
			3828	2023	678	531	584	12			

- Molecule 2 is CANALINE (three-letter code: CAN) (formula: $C_4H_{10}N_2O_3$).



Mol	Chain	Residues	Atoms				ZeroOcc	AltConf
2	A	1	Total	C	N	O	0	0
			9	4	2	3		
2	B	1	Total	C	N	O	0	0
			9	4	2	3		
2	C	1	Total	C	N	O	0	0
			9	4	2	3		

- Molecule 3 is PYRIDOXAL-5'-PHOSPHATE (three-letter code: PLP) (formula: $C_8H_{10}NO_6P$).



Mol	Chain	Residues	Atoms					ZeroOcc	AltConf
3	A	1	Total	C	N	O	P	0	0
			15	8	1	5	1		
3	B	1	Total	C	N	O	P	0	0
			15	8	1	5	1		
3	C	1	Total	C	N	O	P	0	0
			15	8	1	5	1		

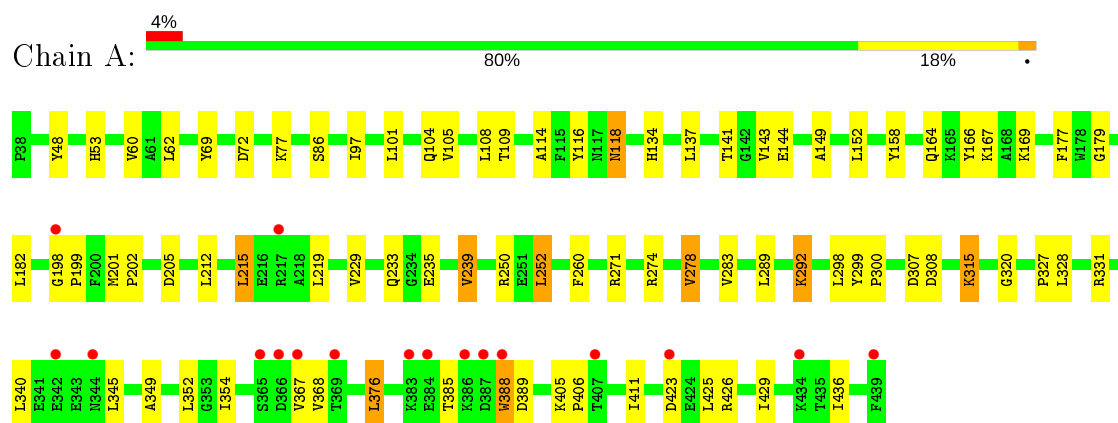
- Molecule 4 is water.

Mol	Chain	Residues	Atoms		ZeroOcc	AltConf
4	A	83	Total	O	0	0
			83	83		
4	B	99	Total	O	0	0
			99	99		
4	C	94	Total	O	0	0
			94	94		

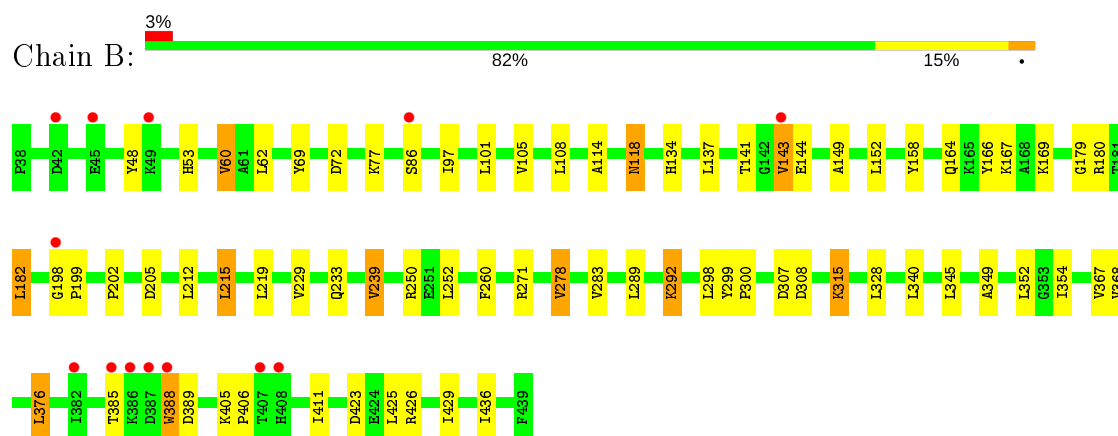
3 Residue-property plots

These plots are drawn for all protein, RNA and DNA chains in the entry. The first graphic for a chain summarises the proportions of the various outlier classes displayed in the second graphic. The second graphic shows the sequence view annotated by issues in geometry and electron density. Residues are color-coded according to the number of geometric quality criteria for which they contain at least one outlier: green = 0, yellow = 1, orange = 2 and red = 3 or more. A red dot above a residue indicates a poor fit to the electron density ($\text{RSRZ} > 2$). Stretches of 2 or more consecutive residues without any outlier are shown as a green connector. Residues present in the sample, but not in the model, are shown in grey.

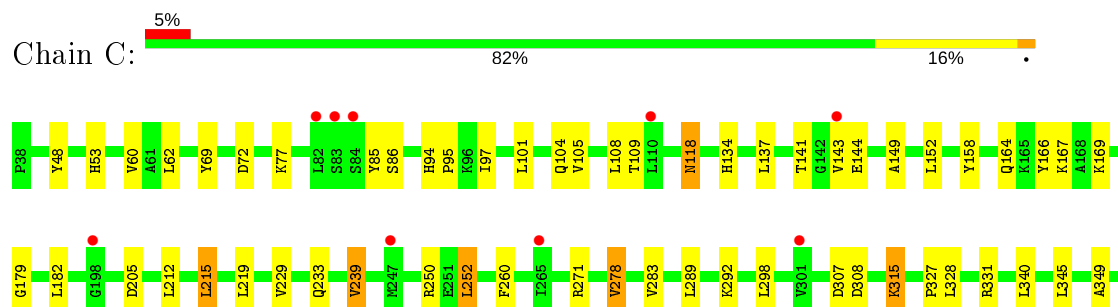
• Molecule 1: ORNITHINE AMINOTRANSFERASE

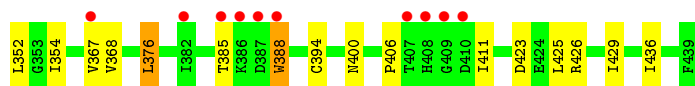


• Molecule 1: ORNITHINE AMINOTRANSFERASE



• Molecule 1: ORNITHINE AMINOTRANSFERASE





4 Data and refinement statistics

Property	Value	Source
Space group	P 32 2 1	Depositor
Cell constants a, b, c, α , β , γ	115.92Å 115.92Å 185.73Å 90.00° 90.00° 120.00°	Depositor
Resolution (Å)	50.00 – 2.30 32.35 – 2.30	Depositor EDS
% Data completeness (in resolution range)	84.1 (50.00-2.30) 86.4 (32.35-2.30)	Depositor EDS
R_{merge}	0.10	Depositor
R_{sym}	0.10	Depositor
$\langle I/\sigma(I) \rangle$ ¹	4.71 (at 2.29Å)	Xtriage
Refinement program	X-PLOR 3.851	Depositor
R, R_{free}	0.212 , 0.238 0.221 , (Not available)	Depositor DCC
R_{free} test set	No test flags present.	wwPDB-VP
Wilson B-factor (Å ²)	29.0	Xtriage
Anisotropy	0.228	Xtriage
Bulk solvent k_{sol} (e/Å ³), B_{sol} (Å ²)	0.39 , 53.6	EDS
L-test for twinning ²	$\langle L \rangle = 0.44$, $\langle L^2 \rangle = 0.26$	Xtriage
Estimated twinning fraction	0.053 for -h,-k,l	Xtriage
F_o, F_c correlation	0.92	EDS
Total number of atoms	11832	wwPDB-VP
Average B, all atoms (Å ²)	23.0	wwPDB-VP

Xtriage's analysis on translational NCS is as follows: *The largest off-origin peak in the Patterson function is 2.83% of the height of the origin peak. No significant pseudotranslation is detected.*

¹Intensities estimated from amplitudes.

²Theoretical values of $\langle |L| \rangle$, $\langle L^2 \rangle$ for acentric reflections are 0.5, 0.333 respectively for untwinned datasets, and 0.375, 0.2 for perfectly twinned datasets.

5 Model quality

5.1 Standard geometry

Bond lengths and bond angles in the following residue types are not validated in this section: CAN, PLP

The Z score for a bond length (or angle) is the number of standard deviations the observed value is removed from the expected value. A bond length (or angle) with $|Z| > 5$ is considered an outlier worth inspection. RMSZ is the root-mean-square of all Z scores of the bond lengths (or angles).

Mol	Chain	Bond lengths		Bond angles	
		RMSZ	# Z >5	RMSZ	# Z >5
1	A	0.34	0/3223	0.62	0/4375
1	B	0.35	0/3223	0.62	0/4375
1	C	0.35	0/3223	0.62	0/4375
All	All	0.35	0/9669	0.62	0/13125

There are no bond length outliers.

There are no bond angle outliers.

There are no chirality outliers.

There are no planarity outliers.

5.2 Too-close contacts

In the following table, the Non-H and H(model) columns list the number of non-hydrogen atoms and hydrogen atoms in the chain respectively. The H(added) column lists the number of hydrogen atoms added and optimized by MolProbity. The Clashes column lists the number of clashes within the asymmetric unit, whereas Symm-Clashes lists symmetry related clashes.

Mol	Chain	Non-H	H(model)	H(added)	Clashes	Symm-Clashes
1	A	3150	678	3156	66	0
1	B	3150	678	3156	57	0
1	C	3150	678	3156	44	0
2	A	9	0	7	1	0
2	B	9	0	8	2	0
2	C	9	0	7	0	0
3	A	15	0	7	3	0
3	B	15	0	7	1	0
3	C	15	0	7	1	0
4	A	83	0	0	3	0

Continued on next page...

Continued from previous page...

Mol	Chain	Non-H	H(model)	H(added)	Clashes	Symm-Clashes
4	B	99	0	0	0	0
4	C	94	0	0	1	0
All	All	9798	2034	9511	149	0

The all-atom clashscore is defined as the number of clashes found per 1000 atoms (including hydrogen atoms). The all-atom clashscore for this structure is 8.

All (149) close contacts within the same asymmetric unit are listed below, sorted by their clash magnitude.

Atom-1	Atom-2	Interatomic distance (Å)	Clash overlap (Å)
1:A:367:VAL:HG13	1:A:388:TRP:HH2	1.31	0.96
1:B:367:VAL:HG13	1:B:388:TRP:HH2	1.34	0.92
1:C:367:VAL:HG13	1:C:388:TRP:HH2	1.34	0.91
1:A:367:VAL:HG13	1:A:388:TRP:CH2	2.09	0.87
1:C:367:VAL:HG13	1:C:388:TRP:CH2	2.11	0.85
1:B:367:VAL:HG13	1:B:388:TRP:CH2	2.11	0.84
1:B:118:ASN:H	1:B:118:ASN:HD22	1.38	0.72
1:A:118:ASN:HD22	1:A:118:ASN:H	1.37	0.71
1:C:118:ASN:HD22	1:C:118:ASN:H	1.38	0.70
1:C:97:ILE:HG22	1:C:298:LEU:HD22	1.74	0.69
1:A:97:ILE:HG22	1:A:298:LEU:HD22	1.76	0.67
1:B:97:ILE:HG22	1:B:298:LEU:HD22	1.75	0.66
1:B:292:LYS:NZ	2:B:1:CAN:HNZ1	1.93	0.66
1:A:158:TYR:OH	1:B:198:GLY:HA2	1.97	0.65
1:A:101:LEU:HD12	1:A:328:LEU:HD11	1.81	0.62
1:B:143:VAL:HG13	1:B:179:GLY:HA3	1.82	0.62
1:B:101:LEU:HD12	1:B:328:LEU:HD11	1.82	0.62
1:C:340:LEU:HD23	1:C:345:LEU:HD12	1.81	0.61
1:B:340:LEU:HD23	1:B:345:LEU:HD12	1.83	0.60
1:A:114:ALA:HB1	1:B:405:LYS:HG3	1.83	0.60
1:A:250:ARG:O	1:A:250:ARG:HD3	2.01	0.60
1:A:86:SER:OG	1:A:271:ARG:HD3	2.01	0.60
1:B:250:ARG:O	1:B:250:ARG:HD3	2.01	0.60
1:A:340:LEU:HD23	1:A:345:LEU:HD12	1.84	0.59
1:C:158:TYR:OH	1:C:166:TYR:HA	2.02	0.59
1:C:86:SER:OG	1:C:271:ARG:HD3	2.03	0.59
1:C:250:ARG:HD3	1:C:250:ARG:O	2.02	0.59
1:C:101:LEU:HD12	1:C:328:LEU:HD11	1.84	0.58
1:A:158:TYR:OH	1:A:166:TYR:HA	2.04	0.58
1:B:134:HIS:HB2	1:B:307:ASP:HA	1.86	0.58
1:B:164:GLN:HB3	1:B:167:LYS:HD2	1.85	0.58

Continued on next page...

Continued from previous page...

Atom-1	Atom-2	Interatomic distance (Å)	Clash overlap (Å)
1:B:158:TYR:OH	1:B:166:TYR:HA	2.04	0.58
1:C:406:PRO:HA	1:C:411:ILE:O	2.05	0.57
1:B:406:PRO:HA	1:B:411:ILE:O	2.05	0.57
1:A:406:PRO:HA	1:A:411:ILE:O	2.05	0.56
1:C:367:VAL:HG12	1:C:368:VAL:HG23	1.88	0.56
1:A:134:HIS:HB2	1:A:307:ASP:HA	1.86	0.56
1:B:86:SER:OG	1:B:271:ARG:HD3	2.04	0.56
1:A:143:VAL:HG13	1:A:179:GLY:HA3	1.87	0.56
1:C:134:HIS:HB2	1:C:307:ASP:HA	1.88	0.55
1:A:283:VAL:HG12	4:A:495:HOH:O	2.06	0.55
1:B:48:TYR:O	1:B:53:HIS:HE1	1.89	0.55
1:A:116:TYR:HB2	1:B:60:VAL:O	2.07	0.55
1:B:367:VAL:HG12	1:B:368:VAL:HG23	1.89	0.55
1:C:349:ALA:HA	1:C:376:LEU:CD2	2.36	0.55
1:A:105:VAL:HG11	1:B:101:LEU:HD23	1.88	0.55
1:C:143:VAL:HG13	1:C:179:GLY:HA3	1.87	0.55
1:C:48:TYR:O	1:C:53:HIS:HE1	1.90	0.55
1:A:101:LEU:HD23	1:B:105:VAL:HG11	1.88	0.55
1:A:48:TYR:O	1:A:53:HIS:HE1	1.90	0.54
1:A:349:ALA:HA	1:A:376:LEU:CD2	2.37	0.54
1:A:198:GLY:HA2	1:B:158:TYR:OH	2.07	0.54
1:B:349:ALA:HA	1:B:376:LEU:CD2	2.37	0.54
1:A:367:VAL:HG12	1:A:368:VAL:HG23	1.89	0.53
1:B:62:LEU:HA	1:B:72:ASP:HA	1.90	0.53
1:C:164:GLN:HB3	1:C:167:LYS:HD2	1.90	0.53
1:A:164:GLN:HB3	1:A:167:LYS:HD2	1.89	0.53
1:B:143:VAL:HG23	3:B:2:PLP:O1P	2.09	0.53
1:A:274:ARG:NH1	4:A:470:HOH:O	2.42	0.53
1:C:143:VAL:HG23	3:C:2:PLP:O1P	2.09	0.53
1:A:158:TYR:HE2	1:B:198:GLY:H	1.57	0.52
1:A:62:LEU:HA	1:A:72:ASP:HA	1.92	0.52
1:A:69:TYR:CD1	1:A:77:LYS:HE2	2.44	0.51
1:A:143:VAL:HG23	3:A:2:PLP:O1P	2.10	0.51
1:C:349:ALA:HA	1:C:376:LEU:HD23	1.92	0.51
1:B:149:ALA:HB2	1:B:289:LEU:HD21	1.93	0.51
1:C:69:TYR:CD1	1:C:77:LYS:HE2	2.46	0.51
1:A:405:LYS:HG3	1:B:114:ALA:HB1	1.93	0.51
1:B:367:VAL:HG11	1:B:436:ILE:HG23	1.93	0.50
1:A:199:PRO:HB2	1:B:202:PRO:HG2	1.94	0.50
1:C:62:LEU:HA	1:C:72:ASP:HA	1.92	0.50
1:B:69:TYR:CD1	1:B:77:LYS:HE2	2.46	0.50

Continued on next page...

Continued from previous page...

Atom-1	Atom-2	Interatomic distance (Å)	Clash overlap (Å)
1:A:149:ALA:HB2	1:A:289:LEU:HD21	1.94	0.49
1:A:349:ALA:HA	1:A:376:LEU:HD23	1.94	0.49
1:B:349:ALA:HA	1:B:376:LEU:HD23	1.95	0.49
1:A:367:VAL:HG11	1:A:436:ILE:HG23	1.95	0.49
1:B:169:LYS:HD3	1:B:205:ASP:OD2	2.12	0.49
1:A:278:VAL:HG22	1:A:283:VAL:CG2	2.43	0.49
1:A:202:PRO:HG2	1:B:199:PRO:HB2	1.95	0.48
1:C:367:VAL:HG11	1:C:436:ILE:HG23	1.96	0.48
1:C:425:LEU:O	1:C:429:ILE:HG13	2.12	0.48
1:A:385:THR:HG1	1:A:388:TRP:HD1	1.61	0.48
1:C:278:VAL:HG22	1:C:283:VAL:CG2	2.44	0.48
1:C:149:ALA:HB2	1:C:289:LEU:HD21	1.94	0.47
1:C:134:HIS:HD2	1:C:308:ASP:H	1.63	0.47
1:A:292:LYS:HZ1	3:A:2:PLP:C4A	2.27	0.47
1:B:233:GLN:HB2	1:B:239:VAL:HG22	1.97	0.47
1:B:278:VAL:HG22	1:B:283:VAL:CG2	2.45	0.46
1:C:385:THR:HG1	1:C:388:TRP:HD1	1.63	0.46
1:A:292:LYS:NZ	3:A:2:PLP:C4A	2.78	0.46
1:B:166:TYR:CD1	1:B:166:TYR:N	2.78	0.46
1:C:166:TYR:N	1:C:166:TYR:CD1	2.81	0.45
1:A:141:THR:OG1	1:A:144:GLU:HG3	2.16	0.45
1:A:166:TYR:N	1:A:166:TYR:CD1	2.82	0.45
1:C:141:THR:OG1	1:C:144:GLU:HG3	2.17	0.45
1:A:315:LYS:HD2	1:A:315:LYS:N	2.32	0.44
1:C:315:LYS:HD2	1:C:315:LYS:N	2.33	0.44
1:C:104:GLN:HB2	1:C:331:ARG:HG3	1.99	0.44
1:A:104:GLN:HB2	1:A:331:ARG:HG3	1.98	0.44
1:A:118:ASN:HD22	1:A:118:ASN:N	2.11	0.44
1:B:425:LEU:O	1:B:429:ILE:HG13	2.17	0.44
1:A:169:LYS:HD3	1:A:205:ASP:OD2	2.15	0.44
1:A:109:THR:O	1:A:327:PRO:HD2	2.17	0.44
1:B:134:HIS:HD2	1:B:308:ASP:H	1.64	0.44
1:A:300:PRO:HD3	1:B:299:TYR:CZ	2.51	0.44
1:C:169:LYS:HD3	1:C:205:ASP:OD2	2.17	0.44
1:A:158:TYR:HH	1:B:198:GLY:HA2	1.82	0.44
1:A:215:LEU:HD22	1:A:219:LEU:HG	1.99	0.44
1:B:134:HIS:CD2	1:B:308:ASP:H	2.36	0.44
1:C:134:HIS:CD2	1:C:308:ASP:H	2.35	0.44
1:C:367:VAL:HG11	1:C:436:ILE:CG2	2.48	0.44
1:A:134:HIS:HD2	1:A:308:ASP:H	1.66	0.43
1:A:425:LEU:O	1:A:429:ILE:HG13	2.18	0.43

Continued on next page...

Continued from previous page...

Atom-1	Atom-2	Interatomic distance (Å)	Clash overlap (Å)
1:A:252:LEU:HD12	1:A:252:LEU:HA	1.90	0.43
1:C:233:GLN:HB2	1:C:239:VAL:HG22	1.99	0.43
1:A:367:VAL:HG11	1:A:436:ILE:CG2	2.49	0.43
1:C:252:LEU:HD12	1:C:252:LEU:HA	1.89	0.43
1:C:352:LEU:HB3	1:C:425:LEU:HD22	2.00	0.43
1:A:233:GLN:HB2	1:A:239:VAL:HG22	2.00	0.43
1:B:141:THR:OG1	1:B:144:GLU:HG3	2.18	0.43
1:C:215:LEU:HD22	1:C:219:LEU:HG	2.00	0.43
1:A:109:THR:HG21	1:B:298:LEU:HG	2.00	0.43
1:A:177:PHE:CE1	2:A:1:CAN:NZ	2.86	0.43
1:A:134:HIS:CD2	1:A:308:ASP:H	2.37	0.42
1:A:352:LEU:HB3	1:A:425:LEU:HD22	2.00	0.42
1:B:367:VAL:HG11	1:B:436:ILE:CG2	2.48	0.42
1:B:315:LYS:HD2	1:B:315:LYS:N	2.33	0.42
1:B:385:THR:HG1	1:B:388:TRP:HD1	1.67	0.42
1:B:215:LEU:HD22	1:B:219:LEU:HG	2.01	0.42
1:A:235:GLU:HG2	4:A:476:HOH:O	2.18	0.42
1:B:101:LEU:O	1:B:105:VAL:HG13	2.19	0.42
1:A:320:GLY:H	1:B:180:ARG:HG3	1.85	0.42
1:C:109:THR:O	1:C:327:PRO:HD2	2.19	0.41
1:A:198:GLY:H	1:B:158:TYR:HE2	1.68	0.41
1:A:198:GLY:HA2	1:B:158:TYR:HH	1.85	0.41
1:A:299:TYR:CZ	1:B:300:PRO:HD3	2.56	0.41
1:C:394:CYS:SG	1:C:406:PRO:HD3	2.60	0.41
1:C:101:LEU:O	1:C:105:VAL:HG13	2.20	0.41
1:C:118:ASN:HD22	1:C:118:ASN:N	2.12	0.41
1:C:400:ASN:ND2	4:C:510:HOH:O	2.54	0.41
1:A:250:ARG:C	1:A:250:ARG:HD3	2.42	0.40
1:B:352:LEU:HB3	1:B:425:LEU:HD22	2.02	0.40
1:C:94:HIS:HA	1:C:95:PRO:HD2	1.85	0.40
1:B:292:LYS:HZ3	2:B:1:CAN:HNZ1	1.67	0.40
1:B:250:ARG:C	1:B:250:ARG:HD3	2.42	0.40
1:A:201:MET:HE1	1:B:182:LEU:HB3	2.04	0.40
1:A:376:LEU:HD13	1:A:376:LEU:HA	1.88	0.40
1:C:85:TYR:O	1:C:86:SER:HB3	2.22	0.40
1:A:101:LEU:O	1:A:105:VAL:HG13	2.21	0.40

There are no symmetry-related clashes.

5.3 Torsion angles

5.3.1 Protein backbone

In the following table, the Percentiles column shows the percent Ramachandran outliers of the chain as a percentile score with respect to all X-ray entries followed by that with respect to entries of similar resolution.

The Analysed column shows the number of residues for which the backbone conformation was analysed, and the total number of residues.

Mol	Chain	Analysed	Favoured	Allowed	Outliers	Percentiles	
1	A	400/402 (100%)	372 (93%)	27 (7%)	1 (0%)	41	50
1	B	400/402 (100%)	371 (93%)	28 (7%)	1 (0%)	41	50
1	C	400/402 (100%)	372 (93%)	27 (7%)	1 (0%)	41	50
All	All	1200/1206 (100%)	1115 (93%)	82 (7%)	3 (0%)	41	50

All (3) Ramachandran outliers are listed below:

Mol	Chain	Res	Type
1	A	292	LYS
1	B	292	LYS
1	C	292	LYS

5.3.2 Protein sidechains

In the following table, the Percentiles column shows the percent sidechain outliers of the chain as a percentile score with respect to all X-ray entries followed by that with respect to entries of similar resolution.

The Analysed column shows the number of residues for which the sidechain conformation was analysed, and the total number of residues.

Mol	Chain	Analysed	Rotameric	Outliers	Percentiles	
1	A	336/336 (100%)	316 (94%)	20 (6%)	19	26
1	B	336/336 (100%)	315 (94%)	21 (6%)	18	24
1	C	336/336 (100%)	317 (94%)	19 (6%)	20	28
All	All	1008/1008 (100%)	948 (94%)	60 (6%)	19	26

All (60) residues with a non-rotameric sidechain are listed below:

Mol	Chain	Res	Type
1	A	60	VAL
1	A	108	LEU
1	A	118	ASN
1	A	137	LEU
1	A	152	LEU
1	A	182	LEU
1	A	212	LEU
1	A	215	LEU
1	A	229	VAL
1	A	239	VAL
1	A	252	LEU
1	A	260	PHE
1	A	278	VAL
1	A	315	LYS
1	A	354	ILE
1	A	376	LEU
1	A	388	TRP
1	A	389	ASP
1	A	423	ASP
1	A	426	ARG
1	B	60	VAL
1	B	108	LEU
1	B	118	ASN
1	B	137	LEU
1	B	143	VAL
1	B	152	LEU
1	B	182	LEU
1	B	212	LEU
1	B	215	LEU
1	B	229	VAL
1	B	239	VAL
1	B	252	LEU
1	B	260	PHE
1	B	278	VAL
1	B	315	LYS
1	B	354	ILE
1	B	376	LEU
1	B	388	TRP
1	B	389	ASP
1	B	423	ASP
1	B	426	ARG
1	C	60	VAL
1	C	108	LEU

Continued on next page...

Continued from previous page...

Mol	Chain	Res	Type
1	C	118	ASN
1	C	137	LEU
1	C	152	LEU
1	C	182	LEU
1	C	212	LEU
1	C	215	LEU
1	C	229	VAL
1	C	239	VAL
1	C	252	LEU
1	C	260	PHE
1	C	278	VAL
1	C	315	LYS
1	C	354	ILE
1	C	376	LEU
1	C	388	TRP
1	C	423	ASP
1	C	426	ARG

Some sidechains can be flipped to improve hydrogen bonding and reduce clashes. All (21) such sidechains are listed below:

Mol	Chain	Res	Type
1	A	53	HIS
1	A	118	ASN
1	A	134	HIS
1	A	176	ASN
1	A	266	GLN
1	A	319	HIS
1	A	400	ASN
1	B	53	HIS
1	B	118	ASN
1	B	134	HIS
1	B	176	ASN
1	B	319	HIS
1	B	400	ASN
1	C	53	HIS
1	C	118	ASN
1	C	134	HIS
1	C	176	ASN
1	C	256	HIS
1	C	266	GLN
1	C	319	HIS
1	C	400	ASN

5.3.3 RNA [i](#)

There are no RNA molecules in this entry.

5.4 Non-standard residues in protein, DNA, RNA chains [i](#)

There are no non-standard protein/DNA/RNA residues in this entry.

5.5 Carbohydrates [i](#)

There are no carbohydrates in this entry.

5.6 Ligand geometry [i](#)

6 ligands are modelled in this entry.

In the following table, the Counts columns list the number of bonds (or angles) for which Mogul statistics could be retrieved, the number of bonds (or angles) that are observed in the model and the number of bonds (or angles) that are defined in the Chemical Component Dictionary. The Link column lists molecule types, if any, to which the group is linked. The Z score for a bond length (or angle) is the number of standard deviations the observed value is removed from the expected value. A bond length (or angle) with $|Z| > 2$ is considered an outlier worth inspection. RMSZ is the root-mean-square of all Z scores of the bond lengths (or angles).

Mol	Type	Chain	Res	Link	Bond lengths			Bond angles		
					Counts	RMSZ	# $ Z > 2$	Counts	RMSZ	# $ Z > 2$
3	PLP	B	2	2	15,15,16	1.80	2 (13%)	20,22,23	1.50	5 (25%)
2	CAN	C	1	3	2,8,8	0.64	0	1,9,9	2.02	1 (100%)
2	CAN	B	1	3	2,8,8	0.67	0	1,9,9	1.03	0
2	CAN	A	1	3	2,8,8	0.68	0	1,9,9	2.07	1 (100%)
3	PLP	A	2	2	15,15,16	1.85	4 (26%)	20,22,23	1.98	8 (40%)
3	PLP	C	2	2	15,15,16	1.98	4 (26%)	20,22,23	1.72	4 (20%)

In the following table, the Chirals column lists the number of chiral outliers, the number of chiral centers analysed, the number of these observed in the model and the number defined in the Chemical Component Dictionary. Similar counts are reported in the Torsion and Rings columns. '-' means no outliers of that kind were identified.

Mol	Type	Chain	Res	Link	Chirals	Torsions	Rings
3	PLP	B	2	2	-	0/6/6/8	0/1/1/1
2	CAN	C	1	3	-	0/3/8/8	-
2	CAN	B	1	3	-	1/3/8/8	-

Continued on next page...

Continued from previous page...

Mol	Type	Chain	Res	Link	Chirals	Torsions	Rings
2	CAN	A	1	3	-	2/3/8/8	-
3	PLP	A	2	2	-	0/6/6/8	0/1/1/1
3	PLP	C	2	2	-	0/6/6/8	0/1/1/1

All (10) bond length outliers are listed below:

Mol	Chain	Res	Type	Atoms	Z	Observed(Å)	Ideal(Å)
3	B	2	PLP	C4A-C4	-5.12	1.41	1.51
3	C	2	PLP	C4A-C4	-4.86	1.41	1.51
3	A	2	PLP	C4A-C4	-4.22	1.42	1.51
3	A	2	PLP	C3-C2	-3.86	1.37	1.40
3	B	2	PLP	C3-C2	-3.21	1.37	1.40
3	C	2	PLP	P-O2P	2.84	1.65	1.54
3	A	2	PLP	P-O2P	2.47	1.64	1.54
3	C	2	PLP	C3-C2	-2.32	1.38	1.40
3	C	2	PLP	P-O4P	2.29	1.67	1.60
3	A	2	PLP	C2-N1	2.26	1.38	1.33

All (19) bond angle outliers are listed below:

Mol	Chain	Res	Type	Atoms	Z	Observed(°)	Ideal(°)
3	C	2	PLP	O3P-P-O4P	3.77	116.76	106.73
3	C	2	PLP	O2P-P-O4P	-3.74	96.78	106.73
3	A	2	PLP	C6-C5-C4	3.56	120.96	118.16
3	B	2	PLP	O4P-C5A-C5	3.41	115.86	109.35
3	A	2	PLP	O2P-P-O4P	-3.33	97.86	106.73
3	A	2	PLP	O4P-C5A-C5	2.71	114.51	109.35
3	A	2	PLP	C4A-C4-C5	-2.68	118.18	120.94
3	A	2	PLP	O3P-P-O1P	2.62	120.94	110.68
3	B	2	PLP	O2P-P-O1P	-2.52	100.81	110.68
3	A	2	PLP	C5-C6-N1	-2.52	119.62	123.82
3	C	2	PLP	C6-C5-C4	2.45	120.09	118.16
3	A	2	PLP	O2P-P-O1P	-2.44	101.11	110.68
3	C	2	PLP	O4P-C5A-C5	2.41	113.95	109.35
3	A	2	PLP	O4P-P-O1P	2.27	112.83	106.47
2	A	1	CAN	OG-CG-CB	2.07	114.27	107.55
3	B	2	PLP	O3P-P-O1P	2.04	118.69	110.68
3	B	2	PLP	O3P-P-O4P	2.03	112.14	106.73
2	C	1	CAN	OG-CG-CB	2.02	114.11	107.55
3	B	2	PLP	C4A-C4-C5	-2.01	118.87	120.94

There are no chirality outliers.

All (3) torsion outliers are listed below:

Mol	Chain	Res	Type	Atoms
2	B	1	CAN	CA-CB-CG-OG
2	A	1	CAN	N-CA-CB-CG
2	A	1	CAN	C-CA-CB-CG

There are no ring outliers.

5 monomers are involved in 8 short contacts:

Mol	Chain	Res	Type	Clashes	Symm-Clashes
3	B	2	PLP	1	0
2	B	1	CAN	2	0
2	A	1	CAN	1	0
3	A	2	PLP	3	0
3	C	2	PLP	1	0

5.7 Other polymers [i](#)

There are no such residues in this entry.

5.8 Polymer linkage issues [i](#)

There are no chain breaks in this entry.

6 Fit of model and data

6.1 Protein, DNA and RNA chains

In the following table, the column labelled ‘#RSRZ> 2’ contains the number (and percentage) of RSRZ outliers, followed by percent RSRZ outliers for the chain as percentile scores relative to all X-ray entries and entries of similar resolution. The OWAB column contains the minimum, median, 95th percentile and maximum values of the occupancy-weighted average B-factor per residue. The column labelled ‘Q< 0.9’ lists the number of (and percentage) of residues with an average occupancy less than 0.9.

Mol	Chain	Analysed	<RSRZ>	#RSRZ>2	OWAB(Å ²)	Q<0.9
1	A	402/402 (100%)	0.36	17 (4%) 36 43	15, 27, 46, 73	0
1	B	402/402 (100%)	0.22	13 (3%) 47 54	13, 25, 45, 74	0
1	C	402/402 (100%)	0.25	19 (4%) 31 38	13, 26, 46, 72	0
All	All	1206/1206 (100%)	0.28	49 (4%) 37 44	13, 26, 46, 74	0

All (49) RSRZ outliers are listed below:

Mol	Chain	Res	Type	RSRZ
1	A	386	LYS	8.5
1	A	388	TRP	7.5
1	C	386	LYS	5.9
1	B	386	LYS	5.5
1	B	387	ASP	5.5
1	A	365	SER	5.2
1	C	385	THR	4.9
1	A	387	ASP	4.7
1	A	367	VAL	4.6
1	B	388	TRP	4.6
1	A	366	ASP	4.2
1	C	387	ASP	3.9
1	C	388	TRP	3.8
1	A	344	ASN	3.8
1	A	217	ARG	3.7
1	A	434	LYS	3.4
1	A	407	THR	3.4
1	B	198	GLY	3.2
1	C	198	GLY	3.2
1	A	439	PHE	3.2
1	C	408	HIS	3.2
1	C	409	GLY	3.0
1	B	382	ILE	3.0

Continued on next page...

Continued from previous page...

Mol	Chain	Res	Type	RSRZ
1	C	110	LEU	2.8
1	A	384	GLU	2.8
1	C	367	VAL	2.7
1	C	410	ASP	2.7
1	A	198	GLY	2.7
1	A	423	ASP	2.6
1	B	385	THR	2.6
1	B	407	THR	2.6
1	C	382	ILE	2.6
1	C	82	LEU	2.5
1	C	407	THR	2.5
1	C	143	VAL	2.5
1	A	383	LYS	2.4
1	B	408	HIS	2.3
1	C	265	ILE	2.3
1	C	83	SER	2.2
1	C	247	MET	2.2
1	A	342	GLU	2.2
1	B	42	ASP	2.2
1	C	301	VAL	2.1
1	B	45	GLU	2.1
1	B	49	LYS	2.0
1	C	84	SER	2.0
1	A	369	THR	2.0
1	B	86	SER	2.0
1	B	143	VAL	2.0

6.2 Non-standard residues in protein, DNA, RNA chains [\(i\)](#)

There are no non-standard protein/DNA/RNA residues in this entry.

6.3 Carbohydrates [\(i\)](#)

There are no carbohydrates in this entry.

6.4 Ligands [\(i\)](#)

In the following table, the Atoms column lists the number of modelled atoms in the group and the number defined in the chemical component dictionary. The B-factors column lists the minimum, median, 95th percentile and maximum values of B factors of atoms in the group. The column labelled 'Q< 0.9' lists the number of atoms with occupancy less than 0.9.

Mol	Type	Chain	Res	Atoms	RSCC	RSR	B-factors(\AA^2)	Q<0.9
2	CAN	C	1	9/9	0.77	0.31	41,43,46,47	0
2	CAN	A	1	9/9	0.77	0.26	46,50,52,52	0
2	CAN	B	1	9/9	0.86	0.23	37,43,46,49	0
3	PLP	A	2	15/16	0.94	0.18	24,27,31,38	0
3	PLP	C	2	15/16	0.96	0.20	19,27,33,38	0
3	PLP	B	2	15/16	0.98	0.14	20,22,26,31	0

6.5 Other polymers [i](#)

There are no such residues in this entry.