



# Full wwPDB X-ray Structure Validation Report ⓘ

Sep 14, 2020 – 12:13 AM BST

PDB ID : 6CBD  
Title : Crystal Structure of Human Argonaute2 Bound to Three Tryptophans  
Authors : Sheu-Gruttadauria, J.; MacRae, I.J.  
Deposited on : 2018-02-02  
Resolution : 2.20 Å(reported)

This is a Full wwPDB X-ray Structure Validation Report for a publicly released PDB entry.

We welcome your comments at [validation@mail.wwpdb.org](mailto:validation@mail.wwpdb.org)

A user guide is available at

<https://www.wwpdb.org/validation/2017/XrayValidationReportHelp>

with specific help available everywhere you see the ⓘ symbol.

---

The following versions of software and data (see [references ⓘ](#)) were used in the production of this report:

MolProbity : 4.02b-467  
Mogul : 1.8.5 (274361), CSD as541be (2020)  
Xtriage (Phenix) : 1.13  
EDS : **FAILED**  
Percentile statistics : 20191225.v01 (using entries in the PDB archive December 25th 2019)  
Ideal geometry (proteins) : Engh & Huber (2001)  
Ideal geometry (DNA, RNA) : Parkinson et al. (1996)  
Validation Pipeline (wwPDB-VP) : 2.14.4.dev1

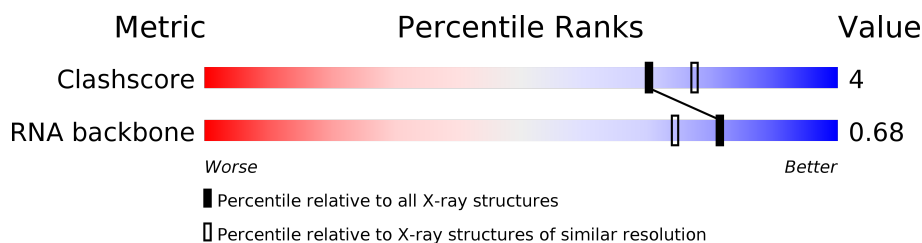
# 1 Overall quality at a glance

The following experimental techniques were used to determine the structure:

## *X-RAY DIFFRACTION*

The reported resolution of this entry is 2.20 Å.




Percentile scores (ranging between 0-100) for global validation metrics of the entry are shown in the following graphic. The table shows the number of entries on which the scores are based.



Metric	Whole archive (#Entries)	Similar resolution (#Entries, resolution range(Å))
Clashscore	141614	5594 (2.20-2.20)
RNA backbone	3102	1032 (2.60-1.80)

The table below summarises the geometric issues observed across the polymeric chains and their fit to the electron density. The red, orange, yellow and green segments on the lower bar indicate the fraction of residues that contain outliers for  $\geq 3$ , 2, 1 and 0 types of geometric quality criteria respectively. A grey segment represents the fraction of residues that are not modelled. The numeric value for each fraction is indicated below the corresponding segment, with a dot representing fractions  $\leq 5\%$

Note EDS failed to run properly.

Mol	Chain	Length	Quality of chain
1	A	859	 84% 8% 8%
2	B	21	 62% 24% 5% 10%
3	C	11	 82% 9% 9%

## 2 Entry composition

There are 7 unique types of molecules in this entry. The entry contains 7213 atoms, of which 0 are hydrogens and 0 are deuteriums.

In the tables below, the ZeroOcc column contains the number of atoms modelled with zero occupancy, the AltConf column contains the number of residues with at least one atom in alternate conformation and the Trace column contains the number of residues modelled with at most 2 atoms.

- Molecule 1 is a protein called Protein argonaute-2.

Mol	Chain	Residues	Atoms					ZeroOcc	AltConf	Trace
1	A	787	Total	C	N	O	S	0	0	0
			6299	4019	1126	1114	40			

There is a discrepancy between the modelled and reference sequences:

Chain	Residue	Modelled	Actual	Comment	Reference
A	387	ASP	SER	engineered mutation	UNP Q9UKV8

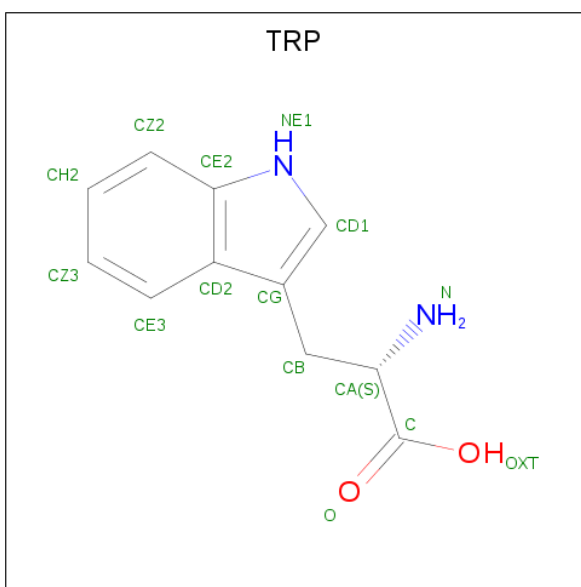
- Molecule 2 is a RNA chain called Guide RNA.

Mol	Chain	Residues	Atoms					ZeroOcc	AltConf	Trace
2	B	19	Total	C	N	O	P	0	0	0
			379	168	60	132	19			

- Molecule 3 is a RNA chain called Target RNA.

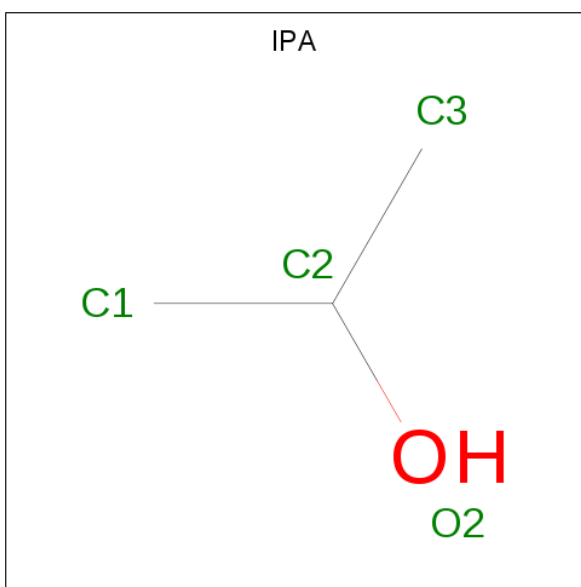
Mol	Chain	Residues	Atoms					ZeroOcc	AltConf	Trace
3	C	10	Total	C	N	O	P	0	0	0
			196	88	37	62	9			

- Molecule 4 is TRYPTOPHAN (three-letter code: TRP) (formula: C<sub>11</sub>H<sub>12</sub>N<sub>2</sub>O<sub>2</sub>).



Mol	Chain	Residues	Atoms				ZeroOcc	AltConf
4	A	1	Total	C	N	O	0	0
			15	11	2	2		
4	A	1	Total	C	N	O	0	0
			15	11	2	2		
4	A	1	Total	C	N	O	0	0
			15	11	2	2		

- Molecule 5 is ISOPROPYL ALCOHOL (three-letter code: IPA) (formula: C<sub>3</sub>H<sub>8</sub>O).



Mol	Chain	Residues	Atoms			ZeroOcc	AltConf
5	A	1	Total	C	O	0	0
			4	3	1		

*Continued on next page...*

*Continued from previous page...*

Mol	Chain	Residues	Atoms			ZeroOcc	AltConf
5	A	1	Total	C	O	0	0
			4	3	1		
5	B	1	Total	C	O	0	0
			4	3	1		

- Molecule 6 is MAGNESIUM ION (three-letter code: MG) (formula: Mg).

Mol	Chain	Residues	Atoms		ZeroOcc	AltConf
6	B	1	Total	Mg	0	0
			1	1		
6	A	1	Total	Mg	0	0
			1	1		
6	C	1	Total	Mg	0	0
			1	1		

- Molecule 7 is water.

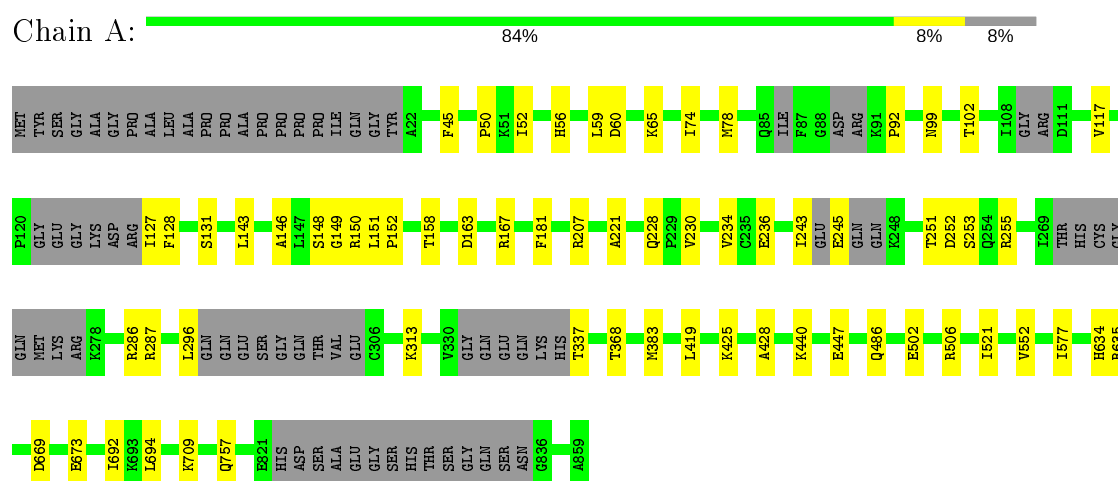
Mol	Chain	Residues	Atoms		ZeroOcc	AltConf
7	A	229	Total	O	0	0
			229	229		
7	B	31	Total	O	0	0
			31	31		
7	C	19	Total	O	0	0
			19	19		

### 3 Residue-property plots

These plots are drawn for all protein, RNA, DNA and oligosaccharide chains in the entry. The first graphic for a chain summarises the proportions of the various outlier classes displayed in the second graphic. The second graphic shows the sequence view annotated by issues in geometry. Residues are color-coded according to the number of geometric quality criteria for which they contain at least one outlier: green = 0, yellow = 1, orange = 2 and red = 3 or more. Stretches of 2 or more consecutive residues without any outlier are shown as a green connector. Residues present in the sample, but not in the model, are shown in grey.

Note EDS failed to run properly.

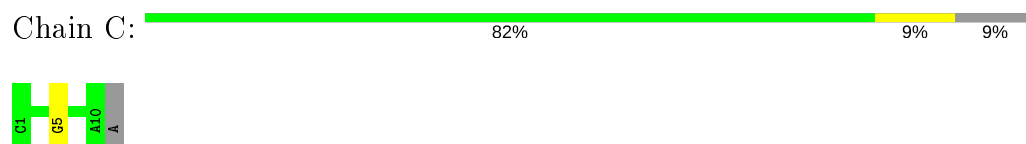
- Molecule 1: Protein argonaute-2



- Molecule 2: Guide RNA



- Molecule 3: Target RNA



## 4 Data and refinement statistics

EDS failed to run properly - this section is therefore incomplete.

Property	Value	Source
Space group	P 1 21 1	Depositor
Cell constants a, b, c, $\alpha$ , $\beta$ , $\gamma$	55.83 Å 117.00 Å 70.25 Å 90.00° 92.64° 90.00°	Depositor
Resolution (Å)	35.50 – 2.20	Depositor
% Data completeness (in resolution range)	98.2 (35.50-2.20)	Depositor
$R_{merge}$	0.07	Depositor
$R_{sym}$	(Not available)	Depositor
$\langle I/\sigma(I) \rangle$ <sup>1</sup>	2.76 (at 2.20 Å)	Xtriage
Refinement program	PHENIX 1.9_1692	Depositor
R, $R_{free}$	0.176 , 0.215	Depositor
Wilson B-factor (Å <sup>2</sup> )	32.0	Xtriage
Anisotropy	0.493	Xtriage
L-test for twinning <sup>2</sup>	$\langle  L  \rangle = 0.49$ , $\langle L^2 \rangle = 0.32$	Xtriage
Estimated twinning fraction	0.036 for h,-k,-l	Xtriage
Total number of atoms	7213	wwPDB-VP
Average B, all atoms (Å <sup>2</sup> )	46.0	wwPDB-VP

Xtriage's analysis on translational NCS is as follows: *The largest off-origin peak in the Patterson function is 4.87% of the height of the origin peak. No significant pseudotranslation is detected.*

<sup>1</sup>Intensities estimated from amplitudes.

<sup>2</sup>Theoretical values of  $\langle |L| \rangle$ ,  $\langle L^2 \rangle$  for acentric reflections are 0.5, 0.333 respectively for untwinned datasets, and 0.375, 0.2 for perfectly twinned datasets.

## 5 Model quality [i](#)

### 5.1 Standard geometry [i](#)

Bond lengths and bond angles in the following residue types are not validated in this section: MG, IPA

The Z score for a bond length (or angle) is the number of standard deviations the observed value is removed from the expected value. A bond length (or angle) with  $|Z| > 5$  is considered an outlier worth inspection. RMSZ is the root-mean-square of all Z scores of the bond lengths (or angles).

Mol	Chain	Bond lengths		Bond angles	
		RMSZ	$\# Z  > 5$	RMSZ	$\# Z  > 5$
1	A	0.25	0/6444	0.43	0/8716
2	B	0.57	1/419 (0.2%)	0.73	0/645
3	C	0.30	0/219	0.79	0/340
All	All	0.28	1/7082 (0.0%)	0.47	0/9701

All (1) bond length outliers are listed below:

Mol	Chain	Res	Type	Atoms	Z	Observed(Å)	Ideal(Å)
2	B	1	U	OP3-P	-10.69	1.48	1.61

There are no bond angle outliers.

There are no chirality outliers.

There are no planarity outliers.

### 5.2 Too-close contacts [i](#)

In the following table, the Non-H and H(model) columns list the number of non-hydrogen atoms and hydrogen atoms in the chain respectively. The H(added) column lists the number of hydrogen atoms added and optimized by MolProbity. The Clashes column lists the number of clashes within the asymmetric unit, whereas Symm-Clashes lists symmetry related clashes.

Mol	Chain	Non-H	H(model)	H(added)	Clashes	Symm-Clashes
1	A	6299	0	6362	47	0
2	B	379	0	193	4	0
3	C	196	0	98	2	0
4	A	45	0	27	2	0
5	A	8	0	16	0	0
5	B	4	0	8	0	0
6	A	1	0	0	0	0

*Continued on next page...*



*Continued from previous page...*

Mol	Chain	Non-H	H(model)	H(added)	Clashes	Symm-Clashes
6	B	1	0	0	0	0
6	C	1	0	0	0	0
7	A	229	0	0	4	0
7	B	31	0	0	0	0
7	C	19	0	0	0	0
All	All	7213	0	6704	49	0

The all-atom clashscore is defined as the number of clashes found per 1000 atoms (including hydrogen atoms). The all-atom clashscore for this structure is 4.

All (49) close contacts within the same asymmetric unit are listed below, sorted by their clash magnitude.

Atom-1	Atom-2	Interatomic distance (Å)	Clash overlap (Å)
1:A:502:GLU:O	1:A:506:ARG:HG3	1.89	0.72
1:A:167:ARG:HG2	1:A:181:PHE:HZ	1.55	0.70
4:A:902:TRP:N	7:A:1003:HOH:O	2.27	0.68
1:A:286:ARG:NH2	1:A:287:ARG:HH12	1.91	0.67
1:A:757:GLN:HG3	3:C:5:G:N2	2.08	0.66
1:A:521:ILE:HD12	1:A:552:VAL:HG21	1.79	0.65
1:A:313:LYS:NZ	7:A:1008:HOH:O	2.33	0.61
1:A:228:GLN:NE2	1:A:236:GLU:OE2	2.30	0.61
1:A:286:ARG:CZ	1:A:287:ARG:HH12	2.17	0.57
1:A:65:LYS:NZ	2:B:16:U:O2'	2.20	0.55
2:B:3:C:H2'	2:B:4:A:C8	2.42	0.54
1:A:148:SER:OG	1:A:150:ARG:NH1	2.39	0.54
1:A:252:ASP:OD1	1:A:255:ARG:NH1	2.31	0.54
1:A:428:ALA:HB2	1:A:440:LYS:HE2	1.89	0.54
1:A:56:HIS:NE2	1:A:99:ASN:OD1	2.37	0.53
1:A:296:LEU:HD12	1:A:296:LEU:H	1.73	0.53
1:A:207:ARG:NH2	1:A:673:GLU:OE1	2.40	0.52
1:A:146:ALA:HA	1:A:151:LEU:HB2	1.92	0.51
1:A:143:LEU:HB2	1:A:158:THR:HG21	1.92	0.51
1:A:50:PRO:HB2	1:A:52:ILE:HG13	1.93	0.51
1:A:148:SER:OG	1:A:149:GLY:N	2.44	0.50
1:A:337:THR:HA	2:B:21:U:H1'	1.94	0.49
1:A:45:PHE:CZ	1:A:383:MET:HG3	2.47	0.49
1:A:757:GLN:HG3	3:C:5:G:H21	1.75	0.49
1:A:251:THR:HG22	1:A:253:SER:H	1.78	0.48
1:A:74:ILE:HG23	1:A:117:VAL:HG21	1.95	0.48
1:A:287:ARG:HG3	1:A:287:ARG:HH11	1.79	0.48
1:A:221:ALA:HB3	1:A:368:THR:HG22	1.95	0.48

*Continued on next page...*

*Continued from previous page...*

Atom-1	Atom-2	Interatomic distance (Å)	Clash overlap (Å)
1:A:117:VAL:HG23	1:A:128:PHE:HB2	1.95	0.47
1:A:59:LEU:HA	1:A:131:SER:O	2.15	0.47
1:A:167:ARG:HG2	1:A:181:PHE:CZ	2.44	0.46
1:A:92:PRO:HB3	1:A:102:THR:HG22	1.98	0.45
1:A:709:LYS:HG3	7:A:1083:HOH:O	2.17	0.45
1:A:245:GLU:OE1	1:A:245:GLU:N	2.50	0.45
1:A:692:ILE:HD11	4:A:903:TRP:HZ3	1.82	0.45
1:A:78:MET:HB2	1:A:117:VAL:HG11	1.99	0.44
1:A:60:ASP:HB2	1:A:131:SER:HB2	1.99	0.44
1:A:243:ILE:O	1:A:245:GLU:N	2.50	0.44
1:A:419:LEU:HD23	1:A:577:ILE:HD11	2.00	0.44
1:A:634:HIS:CD2	1:A:635:ARG:HG3	2.54	0.43
1:A:447:GLU:OE2	1:A:486:GLN:NE2	2.53	0.42
1:A:669:ASP:OD1	7:A:1001:HOH:O	2.21	0.42
1:A:230:VAL:O	1:A:234:VAL:HG23	2.20	0.42
1:A:151:LEU:HA	1:A:152:PRO:HD3	1.83	0.41
1:A:117:VAL:O	1:A:127:ILE:N	2.54	0.41
1:A:635:ARG:HD3	2:B:11:C:OP1	2.21	0.41
1:A:163:ASP:O	1:A:167:ARG:HB2	2.21	0.41
1:A:425:LYS:HE3	1:A:425:LYS:HB3	1.92	0.40
1:A:694:LEU:HA	1:A:694:LEU:HD23	1.98	0.40

There are no symmetry-related clashes.

## 5.3 Torsion angles [i](#)

### 5.3.1 Protein backbone [i](#)

There are no protein backbone outliers to report in this entry.

### 5.3.2 Protein sidechains [i](#)

There are no protein residues with a non-rotameric sidechain to report in this entry.

### 5.3.3 RNA [i](#)

Mol	Chain	Analysed	Backbone Outliers	Pucker Outliers
2	B	16/21 (76%)	1 (6%)	0
3	C	8/11 (72%)	0	0

*Continued on next page...*

*Continued from previous page...*

Mol	Chain	Analysed	Backbone Outliers	Pucker Outliers
All	All	24/32 (75%)	1 (4%)	0

All (1) RNA backbone outliers are listed below:

Mol	Chain	Res	Type
2	B	16	U

There are no RNA pucker outliers to report.

## 5.4 Non-standard residues in protein, DNA, RNA chains [i](#)

There are no non-standard protein/DNA/RNA residues in this entry.

## 5.5 Carbohydrates [i](#)

There are no monosaccharides in this entry.

## 5.6 Ligand geometry [i](#)

Of 9 ligands modelled in this entry, 3 are monoatomic - leaving 6 for Mogul analysis.

In the following table, the Counts columns list the number of bonds (or angles) for which Mogul statistics could be retrieved, the number of bonds (or angles) that are observed in the model and the number of bonds (or angles) that are defined in the Chemical Component Dictionary. The Link column lists molecule types, if any, to which the group is linked. The Z score for a bond length (or angle) is the number of standard deviations the observed value is removed from the expected value. A bond length (or angle) with  $|Z| > 2$  is considered an outlier worth inspection. RMSZ is the root-mean-square of all Z scores of the bond lengths (or angles).

Mol	Type	Chain	Res	Link	Bond lengths			Bond angles		
					Counts	RMSZ	$\# Z  > 2$	Counts	RMSZ	$\# Z  > 2$
4	TRP	A	902	-	12,16,16	0.67	0	12,22,22	0.90	0
5	IPA	B	101	-	3,3,3	0.55	0	3,3,3	0.31	0
5	IPA	A	904	-	3,3,3	0.52	0	3,3,3	0.33	0
4	TRP	A	903	-	12,16,16	0.66	0	12,22,22	0.87	0
4	TRP	A	901	-	12,16,16	0.66	0	12,22,22	0.86	0
5	IPA	A	905	-	3,3,3	0.52	0	3,3,3	0.34	0

In the following table, the Chirals column lists the number of chiral outliers, the number of chiral centers analysed, the number of these observed in the model and the number defined in the Chemical Component Dictionary. Similar counts are reported in the Torsion and Rings columns.

'-' means no outliers of that kind were identified.

Mol	Type	Chain	Res	Link	Chirals	Torsions	Rings
4	TRP	A	902	-	-	2/3/8/8	0/2/2/2
4	TRP	A	901	-	-	0/3/8/8	0/2/2/2
4	TRP	A	903	-	-	2/3/8/8	0/2/2/2

There are no bond length outliers.

There are no bond angle outliers.

There are no chirality outliers.

All (4) torsion outliers are listed below:

Mol	Chain	Res	Type	Atoms
4	A	902	TRP	C-CA-CB-CG
4	A	903	TRP	CA-CB-CG-CD1
4	A	903	TRP	N-CA-CB-CG
4	A	902	TRP	N-CA-CB-CG

There are no ring outliers.

2 monomers are involved in 2 short contacts:

Mol	Chain	Res	Type	Clashes	Symm-Clashes
4	A	902	TRP	1	0
4	A	903	TRP	1	0

## 5.7 Other polymers [i](#)

There are no such residues in this entry.

## 5.8 Polymer linkage issues [i](#)

There are no chain breaks in this entry.

## 6 Fit of model and data [i](#)

### 6.1 Protein, DNA and RNA chains [i](#)

EDS failed to run properly - this section is therefore empty.

### 6.2 Non-standard residues in protein, DNA, RNA chains [i](#)

EDS failed to run properly - this section is therefore empty.

### 6.3 Carbohydrates [i](#)

EDS failed to run properly - this section is therefore empty.

### 6.4 Ligands [i](#)

EDS failed to run properly - this section is therefore empty.

### 6.5 Other polymers [i](#)

EDS failed to run properly - this section is therefore empty.