



Full wwPDB X-ray Structure Validation Report ⓘ

May 15, 2020 – 06:48 pm BST

PDB ID : 6CBN
Title : x-ray structure of NeoB from streptomyces fradiae in complex with PLP and neomycin (as the external aldimine) at pH 7.5
Authors : Thoden, J.B.; Dow, G.T.; Holden, H.M.
Deposited on : 2018-02-03
Resolution : 1.35 Å(reported)

This is a Full wwPDB X-ray Structure Validation Report for a publicly released PDB entry.

We welcome your comments at validation@mail.wwpdb.org

A user guide is available at

<https://www.wwpdb.org/validation/2017/XrayValidationReportHelp>

with specific help available everywhere you see the ⓘ symbol.

The following versions of software and data (see [references ⓘ](#)) were used in the production of this report:

MolProbity : 4.02b-467
Mogul : 1.8.5 (274361), CSD as541be (2020)
Xtriage (Phenix) : 1.13
EDS : 2.11
buster-report : 1.1.7 (2018)
Percentile statistics : 20191225.v01 (using entries in the PDB archive December 25th 2019)
Refmac : 5.8.0158
CCP4 : 7.0.044 (Gargrove)
Ideal geometry (proteins) : Engh & Huber (2001)
Ideal geometry (DNA, RNA) : Parkinson et al. (1996)
Validation Pipeline (wwPDB-VP) : 2.11

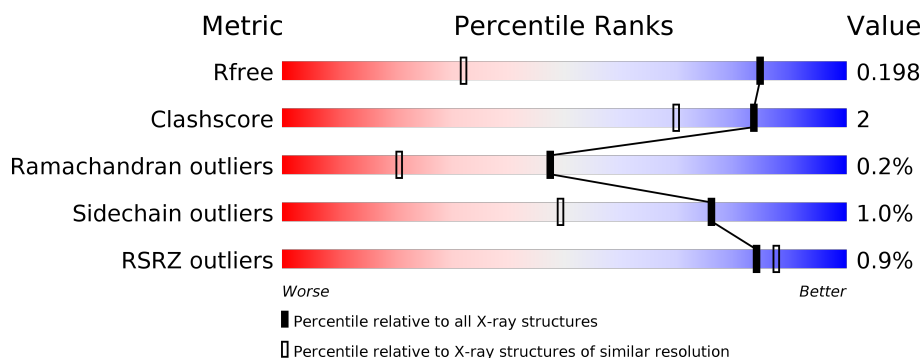
1 Overall quality at a glance

The following experimental techniques were used to determine the structure:

X-RAY DIFFRACTION

The reported resolution of this entry is 1.35 Å.

Percentile scores (ranging between 0-100) for global validation metrics of the entry are shown in the following graphic. The table shows the number of entries on which the scores are based.



Metric	Whole archive (#Entries)	Similar resolution (#Entries, resolution range(Å))
R_{free}	130704	1509 (1.38-1.34)
Clashscore	141614	1551 (1.38-1.34)
Ramachandran outliers	138981	1530 (1.38-1.34)
Sidechain outliers	138945	1530 (1.38-1.34)
RSRZ outliers	127900	1487 (1.38-1.34)

The table below summarises the geometric issues observed across the polymeric chains and their fit to the electron density. The red, orange, yellow and green segments on the lower bar indicate the fraction of residues that contain outliers for ≥ 3 , 2, 1 and 0 types of geometric quality criteria respectively. A grey segment represents the fraction of residues that are not modelled. The numeric value for each fraction is indicated below the corresponding segment, with a dot representing fractions $\leq 5\%$. The upper red bar (where present) indicates the fraction of residues that have poor fit to the electron density. The numeric value is given above the bar.

Mol	Chain	Length	Quality of chain
1	A	438	<div> <div style="width: 100%; height: 10px; background: linear-gradient(to right, red 1%, orange 1%, yellow 1%, green 88%, grey 10%);"></div> <div style="display: flex; justify-content: space-between; width: 100%;"> % 88% 5% 7% </div> </div>
1	B	438	<div> <div style="width: 100%; height: 10px; background: linear-gradient(to right, green 89%, yellow 1%, grey 10%);"></div> <div style="display: flex; justify-content: space-between; width: 100%;"> 89% • 7% </div> </div>

The following table lists non-polymeric compounds, carbohydrate monomers and non-standard residues in protein, DNA, RNA chains that are outliers for geometric or electron-density-fit criteria:

Mol	Type	Chain	Res	Chirality	Geometry	Clashes	Electron density
3	EDO	A	502	-	X	-	-

2 Entry composition

There are 4 unique types of molecules in this entry. The entry contains 7372 atoms, of which 0 are hydrogens and 0 are deuteriums.

In the tables below, the ZeroOcc column contains the number of atoms modelled with zero occupancy, the AltConf column contains the number of residues with at least one atom in alternate conformation and the Trace column contains the number of residues modelled with at most 2 atoms.

- Molecule 1 is a protein called Neamine transaminase NeoN.

Mol	Chain	Residues	Atoms					ZeroOcc	AltConf	Trace
1	A	409	Total	C	N	O	S	0	9	0
			3153	1994	576	575	8			
1	B	409	Total	C	N	O	S	0	9	0
			3148	1993	573	574	8			

There are 44 discrepancies between the modelled and reference sequences:

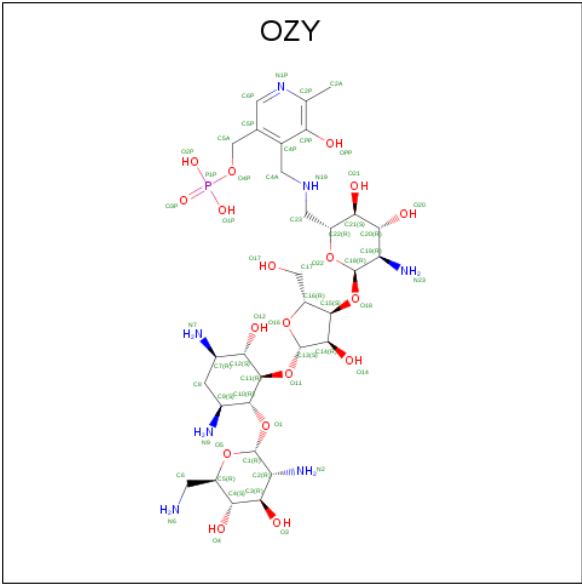
Chain	Residue	Modelled	Actual	Comment	Reference
A	-21	MET	-	initiating methionine	UNP Q53U08
A	-20	GLY	-	expression tag	UNP Q53U08
A	-19	SER	-	expression tag	UNP Q53U08
A	-18	SER	-	expression tag	UNP Q53U08
A	-17	HIS	-	expression tag	UNP Q53U08
A	-16	HIS	-	expression tag	UNP Q53U08
A	-15	HIS	-	expression tag	UNP Q53U08
A	-14	HIS	-	expression tag	UNP Q53U08
A	-13	HIS	-	expression tag	UNP Q53U08
A	-12	HIS	-	expression tag	UNP Q53U08
A	-11	SER	-	expression tag	UNP Q53U08
A	-10	SER	-	expression tag	UNP Q53U08
A	-9	GLU	-	expression tag	UNP Q53U08
A	-8	ASN	-	expression tag	UNP Q53U08
A	-7	LEU	-	expression tag	UNP Q53U08
A	-6	TYR	-	expression tag	UNP Q53U08
A	-5	PHE	-	expression tag	UNP Q53U08
A	-4	GLN	-	expression tag	UNP Q53U08
A	-3	GLY	-	expression tag	UNP Q53U08
A	-2	GLY	-	expression tag	UNP Q53U08
A	-1	GLY	-	expression tag	UNP Q53U08
A	0	HIS	-	expression tag	UNP Q53U08
B	-21	MET	-	initiating methionine	UNP Q53U08
B	-20	GLY	-	expression tag	UNP Q53U08
B	-19	SER	-	expression tag	UNP Q53U08

Continued on next page...

Continued from previous page...

Chain	Residue	Modelled	Actual	Comment	Reference
B	-18	SER	-	expression tag	UNP Q53U08
B	-17	HIS	-	expression tag	UNP Q53U08
B	-16	HIS	-	expression tag	UNP Q53U08
B	-15	HIS	-	expression tag	UNP Q53U08
B	-14	HIS	-	expression tag	UNP Q53U08
B	-13	HIS	-	expression tag	UNP Q53U08
B	-12	HIS	-	expression tag	UNP Q53U08
B	-11	SER	-	expression tag	UNP Q53U08
B	-10	SER	-	expression tag	UNP Q53U08
B	-9	GLU	-	expression tag	UNP Q53U08
B	-8	ASN	-	expression tag	UNP Q53U08
B	-7	LEU	-	expression tag	UNP Q53U08
B	-6	TYR	-	expression tag	UNP Q53U08
B	-5	PHE	-	expression tag	UNP Q53U08
B	-4	GLN	-	expression tag	UNP Q53U08
B	-3	GLY	-	expression tag	UNP Q53U08
B	-2	GLY	-	expression tag	UNP Q53U08
B	-1	GLY	-	expression tag	UNP Q53U08
B	0	HIS	-	expression tag	UNP Q53U08

- Molecule 2 is (1R,2R,3S,4R,6S)-4,6-diamino-2-[(3-O-{2-amino-2,6-dideoxy-6-[(3-hydroxy-2-methyl-5-[(phosphonooxy)methyl]pyridin-4-yl)methyl]amino]-alpha-D-glucopyranosyl}-beta-a-D-ribofuranosyl)oxy]-3-hydroxycyclohexyl 2,6-diamino-2,6-dideoxy-alpha-D-glucopyranoside (three-letter code: OZY) (formula: C₃₁H₅₆N₇O₁₈P).



Mol	Chain	Residues	Atoms					ZeroOcc	AltConf
2	A	1	Total	C	N	O	P	0	0
			57	31	7	18	1		
2	B	1	Total	C	N	O	P	0	0
			57	31	7	18	1		

- Molecule 3 is 1,2-ETHANEDIOL (three-letter code: EDO) (formula: C₂H₆O₂).

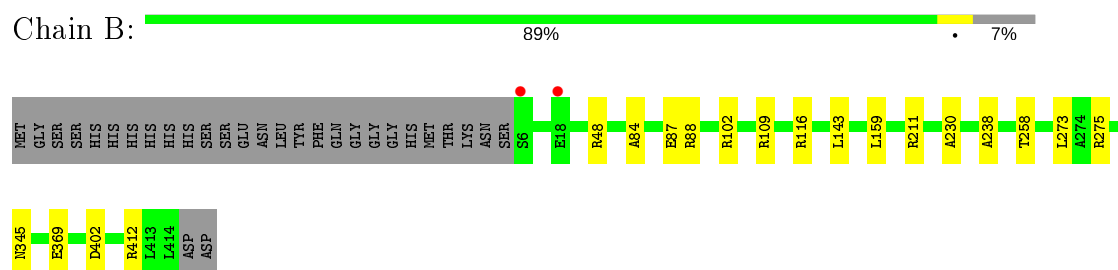


Mol	Chain	Residues	Atoms			ZeroOcc	AltConf
3	A	1	Total	C	O	0	0
			4	2	2		

- Molecule 4 is water.

Mol	Chain	Residues	Atoms		ZeroOcc	AltConf
4	A	449	Total	O	0	0
			449	449		
4	B	504	Total	O	0	0
			504	504		

- Molecule 1: Neamine transaminase NeoN



4 Data and refinement statistics

Property	Value	Source
Space group	P 1 21 1	Depositor
Cell constants a, b, c, α , β , γ	59.26 Å 109.58 Å 70.44 Å 90.00° 110.50° 90.00°	Depositor
Resolution (Å)	50.00 – 1.35 29.98 – 1.35	Depositor EDS
% Data completeness (in resolution range)	98.7 (50.00-1.35) 98.7 (29.98-1.35)	Depositor EDS
R_{merge}	0.07	Depositor
R_{sym}	0.07	Depositor
$\langle I/\sigma(I) \rangle$ ¹	1.88 (at 1.35 Å)	Xtriage
Refinement program	REFMAC 5.8.0124	Depositor
R, R_{free}	0.172 , 0.197 0.173 , 0.198	Depositor DCC
R_{free} test set	9229 reflections (5.08%)	wwPDB-VP
Wilson B-factor (Å ²)	10.0	Xtriage
Anisotropy	0.105	Xtriage
Bulk solvent k_{sol} (e/Å ³), B_{sol} (Å ²)	0.38 , 46.0	EDS
L-test for twinning ²	$\langle L \rangle = 0.48$, $\langle L^2 \rangle = 0.31$	Xtriage
Estimated twinning fraction	No twinning to report.	Xtriage
F_o, F_c correlation	0.97	EDS
Total number of atoms	7372	wwPDB-VP
Average B, all atoms (Å ²)	15.0	wwPDB-VP

Xtriage's analysis on translational NCS is as follows: *The largest off-origin peak in the Patterson function is 5.53% of the height of the origin peak. No significant pseudotranslation is detected.*

¹Intensities estimated from amplitudes.

²Theoretical values of $\langle |L| \rangle$, $\langle L^2 \rangle$ for acentric reflections are 0.5, 0.333 respectively for untwinned datasets, and 0.375, 0.2 for perfectly twinned datasets.

5 Model quality [i](#)

5.1 Standard geometry [i](#)

Bond lengths and bond angles in the following residue types are not validated in this section: EDO, OZY

The Z score for a bond length (or angle) is the number of standard deviations the observed value is removed from the expected value. A bond length (or angle) with $|Z| > 5$ is considered an outlier worth inspection. RMSZ is the root-mean-square of all Z scores of the bond lengths (or angles).

Mol	Chain	Bond lengths		Bond angles	
		RMSZ	$\# Z > 5$	RMSZ	$\# Z > 5$
1	A	0.52	0/3249	0.81	1/4415 (0.0%)
1	B	0.54	0/3247	0.86	6/4414 (0.1%)
All	All	0.53	0/6496	0.84	7/8829 (0.1%)

There are no bond length outliers.

All (7) bond angle outliers are listed below:

Mol	Chain	Res	Type	Atoms	Z	Observed(°)	Ideal(°)
1	B	116	ARG	NE-CZ-NH2	-7.60	116.50	120.30
1	B	116	ARG	NE-CZ-NH1	6.85	123.73	120.30
1	B	402	ASP	CB-CG-OD2	5.93	123.64	118.30
1	B	412	ARG	NE-CZ-NH1	5.64	123.12	120.30
1	B	211	ARG	NE-CZ-NH1	-5.61	117.49	120.30
1	B	109	ARG	NE-CZ-NH2	5.42	123.01	120.30
1	A	211	ARG	NE-CZ-NH1	-5.15	117.72	120.30

There are no chirality outliers.

There are no planarity outliers.

5.2 Too-close contacts [i](#)

In the following table, the Non-H and H(model) columns list the number of non-hydrogen atoms and hydrogen atoms in the chain respectively. The H(added) column lists the number of hydrogen atoms added and optimized by MolProbity. The Clashes column lists the number of clashes within the asymmetric unit, whereas Symm-Clashes lists symmetry related clashes.

Mol	Chain	Non-H	H(model)	H(added)	Clashes	Symm-Clashes
1	A	3153	0	3144	22	0
1	B	3148	0	3141	9	0

Continued on next page...

Continued from previous page...

Mol	Chain	Non-H	H(model)	H(added)	Clashes	Symm-Clashes
2	A	57	0	0	2	0
2	B	57	0	0	2	0
3	A	4	0	5	3	0
4	A	449	0	0	9	4
4	B	504	0	0	4	4
All	All	7372	0	6290	31	4

The all-atom clashscore is defined as the number of clashes found per 1000 atoms (including hydrogen atoms). The all-atom clashscore for this structure is 2.

All (31) close contacts within the same asymmetric unit are listed below, sorted by their clash magnitude.

Atom-1	Atom-2	Interatomic distance (Å)	Clash overlap (Å)
1:A:116[B]:ARG:HD2	4:A:761:HOH:O	1.62	0.97
1:A:336:GLU:OE2	1:A:370[B]:ARG:NH1	2.10	0.84
1:A:116[B]:ARG:CD	4:A:761:HOH:O	2.22	0.84
1:A:414:LEU:C	4:A:927:HOH:O	2.19	0.80
1:B:369:GLU:OE1	4:B:901:HOH:O	2.13	0.66
2:B:501:OZY:N7	4:B:902:HOH:O	2.29	0.66
3:A:502:EDO:H12	1:B:102:ARG:HB2	1.78	0.66
1:B:88[A]:ARG:HG2	1:B:273:LEU:HB3	1.81	0.61
1:A:192[B]:ARG:HG2	1:A:192[B]:ARG:HH11	1.69	0.58
1:A:102:ARG:HB2	3:A:502:EDO:H21	1.86	0.57
1:A:69:THR:O	4:A:601:HOH:O	2.18	0.55
1:A:192[B]:ARG:HG2	1:A:192[B]:ARG:NH1	2.24	0.52
1:A:294:ARG:NH1	4:A:607:HOH:O	2.44	0.49
1:A:48:ARG:HH11	1:A:48:ARG:HG3	1.77	0.48
1:A:48:ARG:NH1	1:A:48:ARG:HG3	2.28	0.47
1:A:362[A]:ARG:NH1	4:A:609:HOH:O	2.48	0.47
1:B:87:GLU:HG2	4:B:1386:HOH:O	2.15	0.45
2:A:501:OZY:N6	2:A:501:OZY:O4	2.50	0.45
1:B:48[B]:ARG:NH2	4:B:905:HOH:O	2.42	0.45
1:A:168:GLU:OE1	4:A:602:HOH:O	2.21	0.45
1:A:336:GLU:O	1:A:363:ARG:HD3	2.18	0.44
1:B:143:LEU:HD21	1:B:159:LEU:HD13	2.00	0.43
1:B:84:ALA:O	1:B:88[B]:ARG:HG3	2.19	0.43
1:A:254:GLU:OE2	2:B:501:OZY:N6	2.52	0.42
1:A:90:HIS:HD2	4:A:664:HOH:O	2.03	0.41
1:A:231[A]:LYS:HE2	1:B:258:THR:HG21	2.01	0.41
1:A:231[A]:LYS:NZ	2:A:501:OZY:O21	2.54	0.41
1:A:103:SER:OG	3:A:502:EDO:H11	2.20	0.41

Continued on next page...

Continued from previous page...

Atom-1	Atom-2	Interatomic distance (Å)	Clash overlap (Å)
1:A:116[B]:ARG:HD3	4:A:761:HOH:O	2.03	0.41
1:A:189:GLU:OE2	1:A:192[A]:ARG:HD2	2.21	0.41
1:A:102:ARG:HD2	1:B:238:ALA:HB1	2.02	0.41

All (4) symmetry-related close contacts are listed below. The label for Atom-2 includes the symmetry operator and encoded unit-cell translations to be applied.

Atom-1	Atom-2	Interatomic distance (Å)	Clash overlap (Å)
4:A:923:HOH:O	4:B:1330:HOH:O[1_556]	2.07	0.13
4:A:920:HOH:O	4:B:1030:HOH:O[1_556]	2.10	0.10
4:A:684:HOH:O	4:B:1248:HOH:O[1_556]	2.11	0.09
4:A:654:HOH:O	4:B:1275:HOH:O[1_656]	2.13	0.07

5.3 Torsion angles [i](#)

5.3.1 Protein backbone [i](#)

In the following table, the Percentiles column shows the percent Ramachandran outliers of the chain as a percentile score with respect to all X-ray entries followed by that with respect to entries of similar resolution.

The Analysed column shows the number of residues for which the backbone conformation was analysed, and the total number of residues.

Mol	Chain	Analysed	Favoured	Allowed	Outliers	Percentiles	
1	A	416/438 (95%)	407 (98%)	8 (2%)	1 (0%)	47	21
1	B	417/438 (95%)	410 (98%)	6 (1%)	1 (0%)	47	21
All	All	833/876 (95%)	817 (98%)	14 (2%)	2 (0%)	47	21

All (2) Ramachandran outliers are listed below:

Mol	Chain	Res	Type
1	B	230	ALA
1	A	230	ALA

5.3.2 Protein sidechains [i](#)

In the following table, the Percentiles column shows the percent sidechain outliers of the chain as a percentile score with respect to all X-ray entries followed by that with respect to entries of similar

resolution.

The Analysed column shows the number of residues for which the sidechain conformation was analysed, and the total number of residues.

Mol	Chain	Analysed	Rotameric	Outliers	Percentiles	
1	A	312/328 (95%)	307 (98%)	5 (2%)	62	30
1	B	312/328 (95%)	309 (99%)	3 (1%)	76	49
All	All	624/656 (95%)	616 (99%)	8 (1%)	76	37

All (8) residues with a non-rotameric sidechain are listed below:

Mol	Chain	Res	Type
1	A	19	LYS
1	A	20	ASP
1	A	275[A]	ARG
1	A	275[B]	ARG
1	A	345	ASN
1	B	275[A]	ARG
1	B	275[B]	ARG
1	B	345	ASN

Some sidechains can be flipped to improve hydrogen bonding and reduce clashes. All (2) such sidechains are listed below:

Mol	Chain	Res	Type
1	A	90	HIS
1	A	334	ASN

5.3.3 RNA ⓘ

There are no RNA molecules in this entry.

5.4 Non-standard residues in protein, DNA, RNA chains ⓘ

There are no non-standard protein/DNA/RNA residues in this entry.

5.5 Carbohydrates ⓘ

There are no carbohydrates in this entry.

5.6 Ligand geometry

3 ligands are modelled in this entry.

In the following table, the Counts columns list the number of bonds (or angles) for which Mogul statistics could be retrieved, the number of bonds (or angles) that are observed in the model and the number of bonds (or angles) that are defined in the Chemical Component Dictionary. The Link column lists molecule types, if any, to which the group is linked. The Z score for a bond length (or angle) is the number of standard deviations the observed value is removed from the expected value. A bond length (or angle) with $|Z| > 2$ is considered an outlier worth inspection. RMSZ is the root-mean-square of all Z scores of the bond lengths (or angles).

Mol	Type	Chain	Res	Link	Bond lengths			Bond angles		
					Counts	RMSZ	# Z > 2	Counts	RMSZ	# Z > 2
2	OZY	A	501	-	61,61,61	1.00	4 (6%)	85,91,91	1.62	20 (23%)
3	EDO	A	502	-	3,3,3	1.47	1 (33%)	2,2,2	3.05	2 (100%)
2	OZY	B	501	-	61,61,61	1.03	4 (6%)	85,91,91	1.81	17 (20%)

In the following table, the Chirals column lists the number of chiral outliers, the number of chiral centers analysed, the number of these observed in the model and the number defined in the Chemical Component Dictionary. Similar counts are reported in the Torsion and Rings columns. '-' means no outliers of that kind were identified.

Mol	Type	Chain	Res	Link	Chirals	Torsions	Rings
2	OZY	A	501	-	-	9/28/104/104	0/5/5/5
3	EDO	A	502	-	-	0/1/1/1	-
2	OZY	B	501	-	-	7/28/104/104	0/5/5/5

All (9) bond length outliers are listed below:

Mol	Chain	Res	Type	Atoms	Z	Observed(Å)	Ideal(Å)
2	A	501	OZY	C4A-N19	-3.73	1.28	1.46
2	B	501	OZY	C4A-N19	-3.68	1.28	1.46
2	B	501	OZY	C4A-C4P	-3.33	1.47	1.51
2	A	501	OZY	C4A-C4P	-3.01	1.48	1.51
2	B	501	OZY	C23-N19	-2.95	1.42	1.47
2	A	501	OZY	C23-N19	-2.87	1.42	1.47
2	B	501	OZY	O20-C20	2.25	1.48	1.43
2	A	501	OZY	C20-C19	2.19	1.56	1.53
3	A	502	EDO	O2-C2	-2.09	1.31	1.42

All (39) bond angle outliers are listed below:

Mol	Chain	Res	Type	Atoms	Z	Observed(°)	Ideal(°)
2	B	501	OZY	O11-C13-O16	-7.96	102.81	111.43
2	A	501	OZY	C4P-C4A-N19	4.95	120.83	111.58
2	B	501	OZY	C4P-C4A-N19	4.34	119.69	111.58
2	A	501	OZY	C6P-C5P-C4P	4.25	121.13	118.12
2	A	501	OZY	C18-O18-C15	-3.92	108.27	117.96
2	A	501	OZY	O21-C21-C22	3.78	118.69	109.30
2	B	501	OZY	C18-O18-C15	-3.62	109.01	117.96
2	B	501	OZY	C5P-C6P-N1P	-3.37	118.20	123.82
2	A	501	OZY	O22-C22-C23	-3.31	99.78	105.96
3	A	502	EDO	O2-C2-C1	3.30	135.67	111.91
2	B	501	OZY	C6P-C5P-C4P	3.20	120.38	118.12
2	B	501	OZY	C4A-N19-C23	3.05	125.44	113.60
2	B	501	OZY	C8-C7-C12	-3.04	105.44	110.04
2	B	501	OZY	O16-C16-C15	2.90	111.09	104.87
2	A	501	OZY	O11-C13-C14	2.87	113.90	107.96
2	B	501	OZY	O1-C10-C11	2.85	114.73	107.48
2	A	501	OZY	C4A-N19-C23	2.81	124.49	113.60
2	B	501	OZY	O18-C18-C19	2.79	113.01	108.22
3	A	502	EDO	O1-C1-C2	2.77	131.87	111.91
2	B	501	OZY	O11-C13-C14	2.73	113.62	107.96
2	B	501	OZY	O1-C1-C2	-2.70	103.56	108.22
2	A	501	OZY	O11-C13-O16	-2.70	108.51	111.43
2	B	501	OZY	C6P-N1P-C2P	2.63	124.05	119.17
2	A	501	OZY	C18-C19-N23	-2.57	105.58	110.20
2	B	501	OZY	O22-C22-C23	-2.54	101.23	105.96
2	A	501	OZY	O20-C20-C19	2.51	114.73	110.22
2	B	501	OZY	O5-C5-C6	2.42	110.52	106.01
2	A	501	OZY	O16-C16-C15	2.33	109.85	104.87
2	A	501	OZY	C23-C22-C21	2.32	118.12	113.54
2	A	501	OZY	C20-C19-N23	2.31	115.79	111.05
2	A	501	OZY	C5A-C5P-C6P	-2.30	115.58	119.37
2	A	501	OZY	O1-C10-C11	2.24	113.17	107.48
2	A	501	OZY	C4-C3-C2	-2.21	107.28	111.07
2	A	501	OZY	C5P-C6P-N1P	-2.20	120.16	123.82
2	A	501	OZY	O22-C22-C21	-2.18	105.74	109.69
2	B	501	OZY	C23-C22-C21	2.13	117.75	113.54
2	A	501	OZY	O12-C12-C7	2.13	113.72	109.81
2	A	501	OZY	OPP-CPP-C4P	2.07	124.20	118.13
2	B	501	OZY	O17-C17-C16	-2.03	104.33	111.29

There are no chirality outliers.

All (16) torsion outliers are listed below:

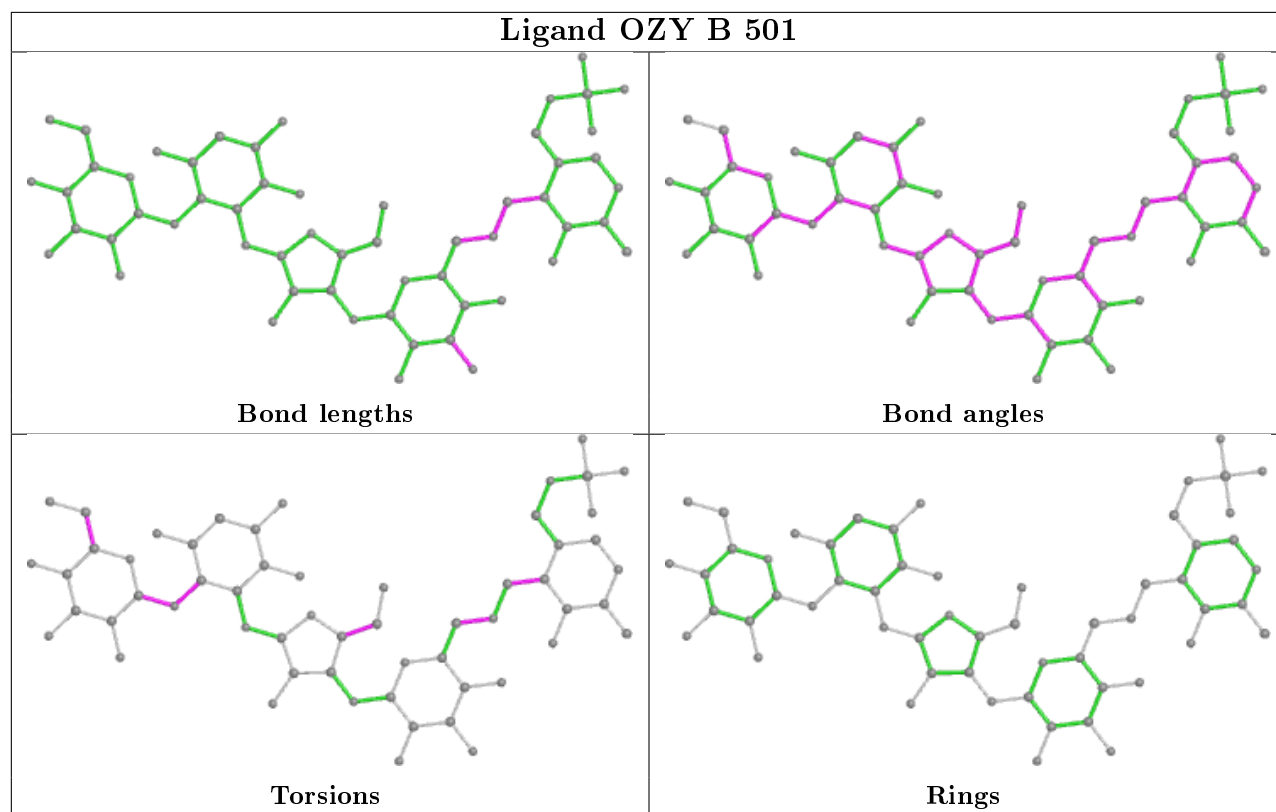
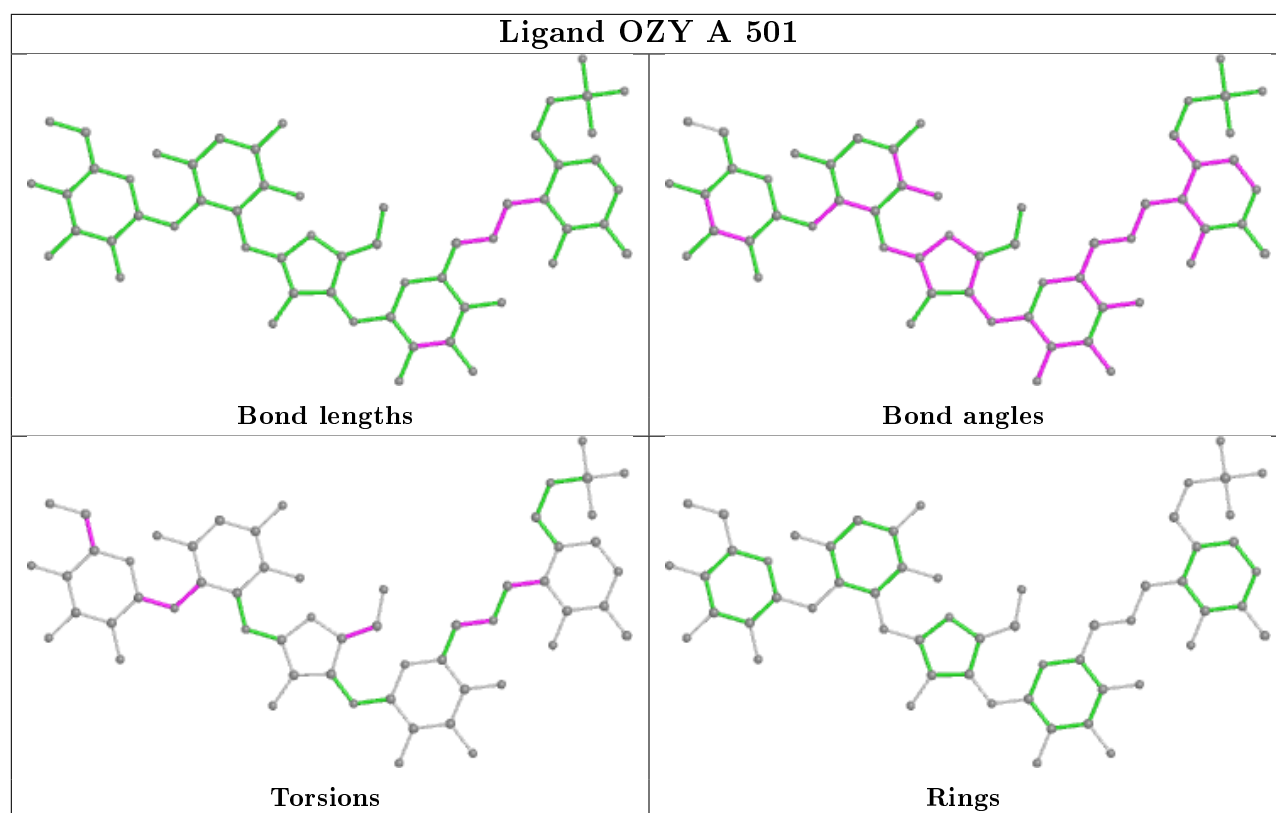
Mol	Chain	Res	Type	Atoms
2	A	501	OZY	N19-C4A-C4P-C5P
2	A	501	OZY	O5-C5-C6-N6
2	A	501	OZY	C4-C5-C6-N6
2	B	501	OZY	N19-C4A-C4P-C5P
2	A	501	OZY	O16-C16-C17-O17
2	A	501	OZY	O5-C1-O1-C10
2	B	501	OZY	O16-C16-C17-O17
2	A	501	OZY	C11-C10-O1-C1
2	B	501	OZY	C11-C10-O1-C1
2	A	501	OZY	C15-C16-C17-O17
2	B	501	OZY	C4-C5-C6-N6
2	A	501	OZY	N19-C4A-C4P-CPP
2	B	501	OZY	N19-C4A-C4P-CPP
2	B	501	OZY	O5-C1-O1-C10
2	A	501	OZY	C22-C23-N19-C4A
2	B	501	OZY	C22-C23-N19-C4A

There are no ring outliers.

3 monomers are involved in 7 short contacts:

Mol	Chain	Res	Type	Clashes	Symm-Clashes
2	A	501	OZY	2	0
3	A	502	EDO	3	0
2	B	501	OZY	2	0

The following is a two-dimensional graphical depiction of Mogul quality analysis of bond lengths, bond angles, torsion angles, and ring geometry for all instances of the Ligand of Interest. In addition, ligands with molecular weight > 250 and outliers as shown on the validation Tables will also be included. For torsion angles, if less than 5% of the Mogul distribution of torsion angles is within 10 degrees of the torsion angle in question, then that torsion angle is considered an outlier. Any bond that is central to one or more torsion angles identified as an outlier by Mogul will be highlighted in the graph. For rings, the root-mean-square deviation (RMSD) between the ring in question and similar rings identified by Mogul is calculated over all ring torsion angles. If the average RMSD is greater than 60 degrees and the minimal RMSD between the ring in question and any Mogul-identified rings is also greater than 60 degrees, then that ring is considered an outlier. The outliers are highlighted in purple. The color gray indicates Mogul did not find sufficient equivalents in the CSD to analyse the geometry.



5.7 Other polymers

There are no such residues in this entry.

5.8 Polymer linkage issues

There are no chain breaks in this entry.

6 Fit of model and data [i](#)

6.1 Protein, DNA and RNA chains [i](#)

In the following table, the column labelled ‘#RSRZ> 2’ contains the number (and percentage) of RSRZ outliers, followed by percent RSRZ outliers for the chain as percentile scores relative to all X-ray entries and entries of similar resolution. The OWAB column contains the minimum, median, 95th percentile and maximum values of the occupancy-weighted average B-factor per residue. The column labelled ‘Q< 0.9’ lists the number of (and percentage) of residues with an average occupancy less than 0.9.

Mol	Chain	Analysed	<RSRZ>	#RSRZ>2	OWAB(Å ²)	Q<0.9
1	A	409/438 (93%)	-0.05	5 (1%) 79 83	6, 14, 31, 50	0
1	B	409/438 (93%)	-0.32	2 (0%) 91 92	5, 11, 22, 40	0
All	All	818/876 (93%)	-0.18	7 (0%) 84 87	5, 12, 28, 50	0

All (7) RSRZ outliers are listed below:

Mol	Chain	Res	Type	RSRZ
1	A	141	ALA	4.1
1	A	414	LEU	4.0
1	A	140	GLU	3.2
1	B	6	SER	2.5
1	A	21	ARG	2.5
1	A	378	GLU	2.1
1	B	18	GLU	2.1

6.2 Non-standard residues in protein, DNA, RNA chains [i](#)

There are no non-standard protein/DNA/RNA residues in this entry.

6.3 Carbohydrates [i](#)

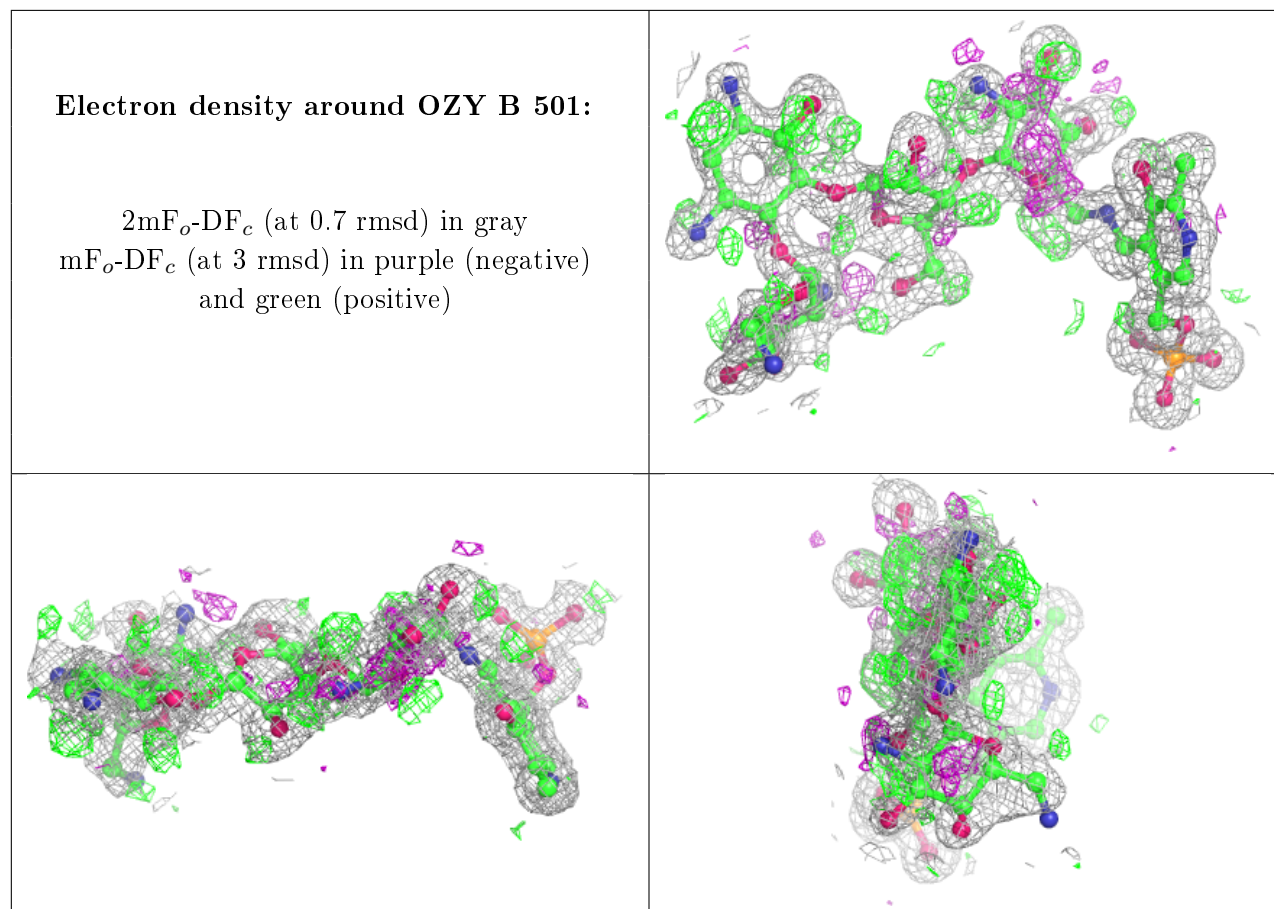
There are no carbohydrates in this entry.

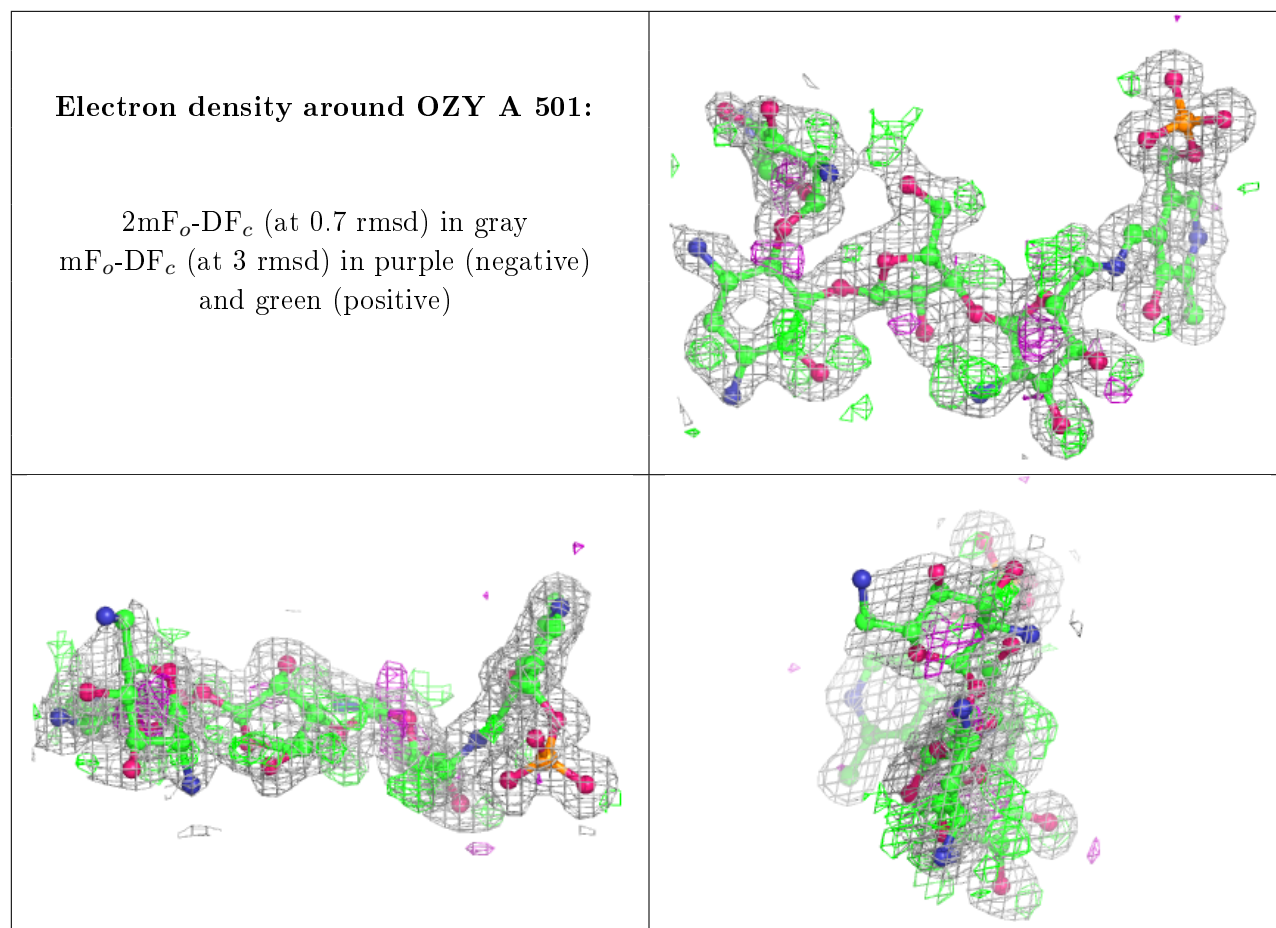
6.4 Ligands [i](#)

In the following table, the Atoms column lists the number of modelled atoms in the group and the number defined in the chemical component dictionary. The B-factors column lists the minimum, median, 95th percentile and maximum values of B factors of atoms in the group. The column labelled ‘Q< 0.9’ lists the number of atoms with occupancy less than 0.9.

Mol	Type	Chain	Res	Atoms	RSCC	RSR	B-factors(\AA^2)	Q<0.9
3	EDO	A	502	4/4	0.93	0.12	5,6,12,14	0
2	OZY	B	501	57/57	0.95	0.12	5,19,42,54	0
2	OZY	A	501	57/57	0.96	0.11	6,23,48,53	0

The following is a graphical depiction of the model fit to experimental electron density of all instances of the Ligand of Interest. In addition, ligands with molecular weight > 250 and outliers as shown on the geometry validation Tables will also be included. Each fit is shown from different orientation to approximate a three-dimensional view.





6.5 Other polymers [i](#)

There are no such residues in this entry.