



wwPDB X-ray Structure Validation Summary Report ⓘ

Jan 25, 2021 – 06:43 PM JST

PDB ID : 7CCC
Title : The structure of the actin filament uncapping complex mediated by twinfilin
Authors : Robinson, R.C.; Mwangangi, D.M.
Deposited on : 2020-06-16
Resolution : 3.20 Å(reported)

This is a wwPDB X-ray Structure Validation Summary Report for a publicly released PDB entry.

We welcome your comments at validation@mail.wwpdb.org

A user guide is available at

<https://www.wwpdb.org/validation/2017/XrayValidationReportHelp>

with specific help available everywhere you see the ⓘ symbol.

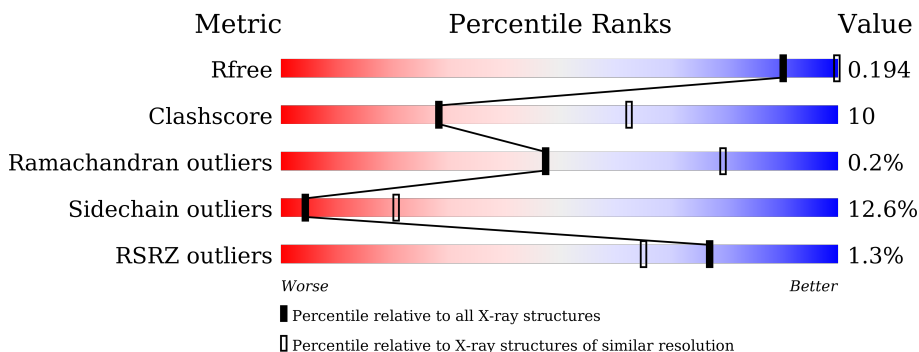
The following versions of software and data (see [references ⓘ](#)) were used in the production of this report:

MolProbity	:	4.02b-467
Mogul	:	1.8.5 (274361), CSD as541be (2020)
Xtriage (Phenix)	:	1.13
EDS	:	2.16
buster-report	:	1.1.7 (2018)
Percentile statistics	:	20191225.v01 (using entries in the PDB archive December 25th 2019)
Refmac	:	5.8.0158
CCP4	:	7.0.044 (Gargrove)
Ideal geometry (proteins)	:	Engh & Huber (2001)
Ideal geometry (DNA, RNA)	:	Parkinson et al. (1996)
Validation Pipeline (wwPDB-VP)	:	2.16

i

X-RAY DIFFRACTION

Percentile scores (ranging between 0-100) for global validation metrics of the entry are shown in the following graphic. The table shows the number of entries on which the scores are based.



Metric	Whole archive (#Entries)	Similar resolution (#Entries, resolution range(Å))
R_{free}	130704	1133 (3.20-3.20)
Clashscore	141614	1253 (3.20-3.20)
Ramachandran outliers	138981	1234 (3.20-3.20)
Sidechain outliers	138945	1233 (3.20-3.20)
RSRZ outliers	127900	1095 (3.20-3.20)

The table below summarises the geometric issues observed across the polymeric chains and their fit to the electron density. The red, orange, yellow and green segments of the lower bar indicate the fraction of residues that contain outliers for ≥ 3 , 2, 1 and 0 types of geometric quality criteria respectively. A grey segment represents the fraction of residues that are not modelled. The numeric value for each fraction is indicated below the corresponding segment, with a dot representing fractions $\leq 5\%$. The upper red bar (where present) indicates the fraction of residues that have poor fit to the electron density. The numeric value is given above the bar.

Mol	Chain	Length	Quality of chain
1	A	377	<div> <div></div> <div>71%</div> <div>22%</div> <div>5%</div> </div>
1	E	377	<div> <div></div> <div>67%</div> <div>24%</div> <div>5%</div> </div>
2	B	350	<div> <div></div> <div>67%</div> <div>26%</div> <div></div> </div>
3	C	286	<div> <div></div> <div>62%</div> <div>29%</div> <div>6%</div> </div>
4	D	272	<div> <div></div> <div>58%</div> <div>30%</div> <div>9%</div> </div>

2 Entry composition

There are 7 unique types of molecules in this entry. The entry contains 12626 atoms, of which 0 are hydrogens and 0 are deuteriums.

In the tables below, the ZeroOcc column contains the number of atoms modelled with zero occupancy, the AltConf column contains the number of residues with at least one atom in alternate conformation and the Trace column contains the number of residues modelled with at most 2 atoms.

- Molecule 1 is a protein called Actin, alpha skeletal muscle.

Mol	Chain	Residues	Atoms					ZeroOcc	AltConf	Trace
1	A	357	Total	C	N	O	S	0	0	0
			2792	1771	467	536	18			
1	E	358	Total	C	N	O	S	0	0	0
			2803	1777	471	537	18			

- Molecule 2 is a protein called Twinfilin-1.

Mol	Chain	Residues	Atoms					ZeroOcc	AltConf	Trace
2	B	342	Total	C	N	O	S	0	0	0
			2784	1768	487	521	8			

- Molecule 3 is a protein called F-actin-capping protein subunit alpha.

Mol	Chain	Residues	Atoms					ZeroOcc	AltConf	Trace
3	C	269	Total	C	N	O	S	0	0	0
			2183	1375	379	424	5			

There is a discrepancy between the modelled and reference sequences:

Chain	Residue	Modelled	Actual	Comment	Reference
C	222	VAL	ILE	engineered mutation	UNP Q5RKN9

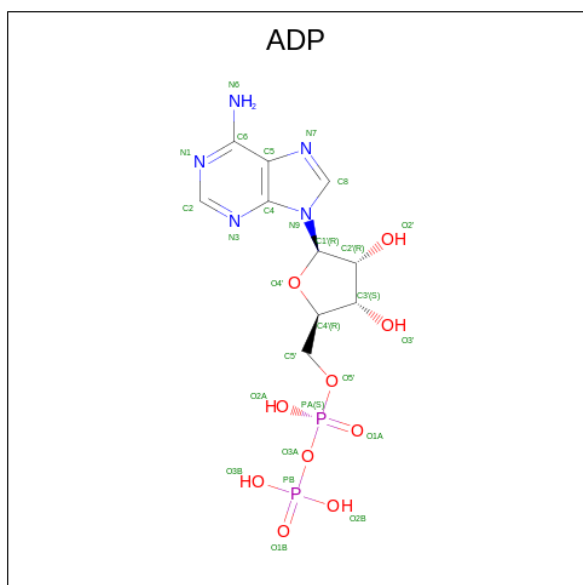
- Molecule 4 is a protein called F-actin-capping protein subunit beta.

Mol	Chain	Residues	Atoms					ZeroOcc	AltConf	Trace
4	D	248	Total	C	N	O	S	0	0	0
			1954	1220	338	385	11			

- Molecule 5 is CALCIUM ION (three-letter code: CA) (formula: Ca).

Mol	Chain	Residues	Atoms	ZeroOcc	AltConf
5	A	1	Total Ca 1 1	0	0
5	E	1	Total Ca 1 1	0	0

- Molecule 6 is ADENOSINE-5'-DIPHOSPHATE (three-letter code: ADP) (formula: $C_{10}H_{15}N_5O_{10}P_2$).

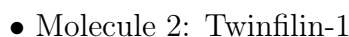
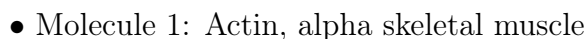


Mol	Chain	Residues	Atoms	ZeroOcc	AltConf
6	A	1	Total C N O P 27 10 5 10 2	0	0
6	E	1	Total C N O P 27 10 5 10 2	0	0

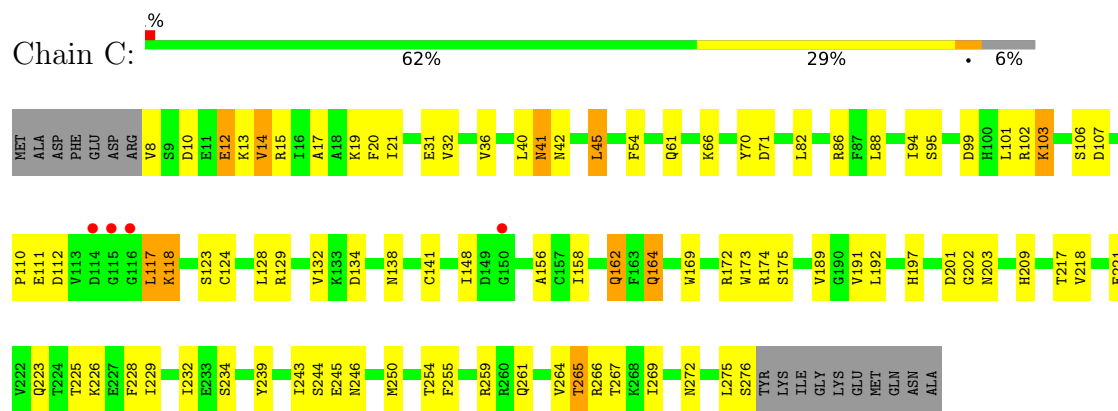
- Molecule 7 is water.

Mol	Chain	Residues	Atoms	ZeroOcc	AltConf
7	A	20	Total O 20 20	0	0
7	B	6	Total O 6 6	0	0
7	C	4	Total O 4 4	0	0
7	D	1	Total O 1 1	0	0
7	E	23	Total O 23 23	0	0

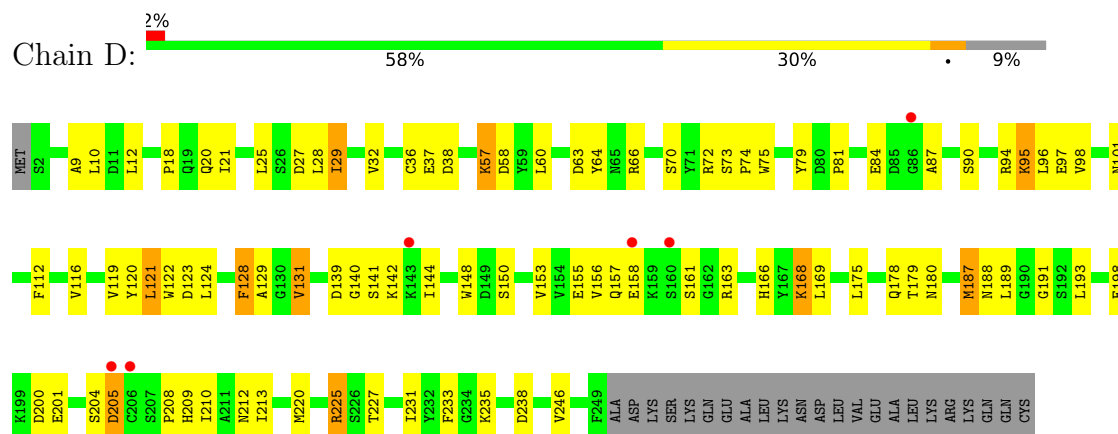
- Molecule 1: Actin, alpha skeletal muscle



- Molecule 3: F-actin-capping protein subunit alpha



- Molecule 4: F-actin-capping protein subunit beta



4 Data and refinement statistics

Property	Value	Source
Space group	P 21 21 21	Depositor
Cell constants a, b, c, α , β , γ	74.76Å 168.66Å 176.99Å 90.00° 90.00° 90.00°	Depositor
Resolution (Å)	19.92 – 3.20 19.92 – 3.20	Depositor EDS
% Data completeness (in resolution range)	92.0 (19.92-3.20) 92.0 (19.92-3.20)	Depositor EDS
R_{merge}	0.19	Depositor
R_{sym}	(Not available)	Depositor
$\langle I/\sigma(I) \rangle$ ¹	2.23 (at 3.22Å)	Xtriage
Refinement program	PHENIX 1.17.1_3660	Depositor
R, R_{free}	0.186 , 0.238 0.191 , 0.194	Depositor DCC
R_{free} test set	3455 reflections (10.00%)	wwPDB-VP
Wilson B-factor (Å ²)	55.6	Xtriage
Anisotropy	0.168	Xtriage
Bulk solvent k_{sol} (e/Å ³), B_{sol} (Å ²)	0.28 , 36.6	EDS
L-test for twinning ²	$\langle L \rangle = 0.51$, $\langle L^2 \rangle = 0.34$	Xtriage
Estimated twinning fraction	0.000 for -h,l,k	Xtriage
F_o, F_c correlation	0.92	EDS
Total number of atoms	12626	wwPDB-VP
Average B, all atoms (Å ²)	55.0	wwPDB-VP

Xtriage's analysis on translational NCS is as follows: *The largest off-origin peak in the Patterson function is 3.40% of the height of the origin peak. No significant pseudotranslation is detected.*

¹Intensities estimated from amplitudes.

²Theoretical values of $\langle |L| \rangle$, $\langle L^2 \rangle$ for acentric reflections are 0.5, 0.333 respectively for untwinned datasets, and 0.375, 0.2 for perfectly twinned datasets.

5 Model quality [i](#)

5.1 Standard geometry [i](#)

Bond lengths and bond angles in the following residue types are not validated in this section: CA, HIC, ADP

The Z score for a bond length (or angle) is the number of standard deviations the observed value is removed from the expected value. A bond length (or angle) with $|Z| > 5$ is considered an outlier worth inspection. RMSZ is the root-mean-square of all Z scores of the bond lengths (or angles).

Mol	Chain	Bond lengths		Bond angles	
		RMSZ	$\# Z > 5$	RMSZ	$\# Z > 5$
1	A	0.28	0/2839	0.45	0/3848
1	E	0.28	0/2850	0.48	1/3862 (0.0%)
2	B	0.28	0/2844	0.51	1/3835 (0.0%)
3	C	0.29	0/2233	0.49	1/3028 (0.0%)
4	D	0.29	0/1988	0.50	0/2684
All	All	0.28	0/12754	0.49	3/17257 (0.0%)

There are no bond length outliers.

All (3) bond angle outliers are listed below:

Mol	Chain	Res	Type	Atoms	Z	Observed($^{\circ}$)	Ideal($^{\circ}$)
2	B	175	LEU	CA-CB-CG	7.54	132.64	115.30
1	E	8	LEU	CA-CB-CG	6.63	130.54	115.30
3	C	117	LEU	CA-CB-CG	6.07	129.25	115.30

There are no chirality outliers.

There are no planarity outliers.

5.2 Too-close contacts [i](#)

In the following table, the Non-H and H(model) columns list the number of non-hydrogen atoms and hydrogen atoms in the chain respectively. The H(added) column lists the number of hydrogen atoms added and optimized by MolProbity. The Clashes column lists the number of clashes within the asymmetric unit, whereas Symm-Clashes lists symmetry-related clashes.

Mol	Chain	Non-H	H(model)	H(added)	Clashes	Symm-Clashes
1	A	2792	0	2763	48	0
1	E	2803	0	2776	59	0
2	B	2784	0	2777	54	0

Continued on next page...

Continued from previous page...

Mol	Chain	Non-H	H(model)	H(added)	Clashes	Symm-Clashes
3	C	2183	0	2099	54	0
4	D	1954	0	1931	49	0
5	A	1	0	0	0	0
5	E	1	0	0	0	0
6	A	27	0	12	2	0
6	E	27	0	12	1	0
7	A	20	0	0	3	0
7	B	6	0	0	0	0
7	C	4	0	0	2	0
7	D	1	0	0	0	0
7	E	23	0	0	2	0
All	All	12626	0	12370	244	0

The all-atom clashscore is defined as the number of clashes found per 1000 atoms (including hydrogen atoms). The all-atom clashscore for this structure is 10.

The worst 5 of 244 close contacts within the same asymmetric unit are listed below, sorted by their clash magnitude.

Atom-1	Atom-2	Interatomic distance (Å)	Clash overlap (Å)
2:B:326:PRO:HG3	4:D:155:GLU:HB2	1.49	0.92
1:E:196:ARG:NH1	1:E:249:THR:O	2.10	0.85
2:B:202:GLN:HB3	2:B:216:ASN:HB3	1.61	0.82
4:D:97:GLU:HB2	4:D:121:LEU:HD11	1.62	0.81
1:A:69:TYR:HB3	1:A:72:GLU:HB3	1.65	0.77

There are no symmetry-related clashes.

5.3 Torsion angles ⓘ

5.3.1 Protein backbone ⓘ

In the following table, the Percentiles column shows the percent Ramachandran outliers of the chain as a percentile score with respect to all X-ray entries followed by that with respect to entries of similar resolution.

The Analysed column shows the number of residues for which the backbone conformation was analysed, and the total number of residues.

Mol	Chain	Analysed	Favoured	Allowed	Outliers	Percentiles
1	A	352/377 (93%)	343 (97%)	9 (3%)	0	100 100

Continued on next page...

Continued from previous page...

Mol	Chain	Analysed	Favoured	Allowed	Outliers	Percentiles	
1	E	353/377 (94%)	341 (97%)	10 (3%)	2 (1%)	25	64
2	B	340/350 (97%)	326 (96%)	14 (4%)	0	100	100
3	C	267/286 (93%)	257 (96%)	10 (4%)	0	100	100
4	D	246/272 (90%)	234 (95%)	11 (4%)	1 (0%)	34	69
All	All	1558/1662 (94%)	1501 (96%)	54 (4%)	3 (0%)	47	79

All (3) Ramachandran outliers are listed below:

Mol	Chain	Res	Type
4	D	141	SER
1	E	251	GLY
1	E	15	GLY

5.3.2 Protein sidechains ⓘ

In the following table, the Percentiles column shows the percent sidechain outliers of the chain as a percentile score with respect to all X-ray entries followed by that with respect to entries of similar resolution.

The Analysed column shows the number of residues for which the sidechain conformation was analysed, and the total number of residues.

Mol	Chain	Analysed	Rotameric	Outliers	Percentiles	
1	A	302/319 (95%)	275 (91%)	27 (9%)	9	35
1	E	303/319 (95%)	269 (89%)	34 (11%)	6	25
2	B	304/310 (98%)	259 (85%)	45 (15%)	3	14
3	C	241/255 (94%)	208 (86%)	33 (14%)	3	17
4	D	220/241 (91%)	186 (84%)	34 (16%)	2	12
All	All	1370/1444 (95%)	1197 (87%)	173 (13%)	4	21

5 of 173 residues with a non-rotameric sidechain are listed below:

Mol	Chain	Res	Type
3	C	71	ASP
3	C	234	SER
1	E	221	LEU
3	C	106	SER
3	C	162	GLN

Sometimes sidechains can be flipped to improve hydrogen bonding and reduce clashes. All (4) such sidechains are listed below:

Mol	Chain	Res	Type
2	B	243	HIS
3	C	138	ASN
4	D	178	GLN
4	D	188	ASN

5.3.3 RNA ⓘ

There are no RNA molecules in this entry.

5.4 Non-standard residues in protein, DNA, RNA chains ⓘ

2 non-standard protein/DNA/RNA residues are modelled in this entry.

In the following table, the Counts columns list the number of bonds (or angles) for which Mogul statistics could be retrieved, the number of bonds (or angles) that are observed in the model and the number of bonds (or angles) that are defined in the Chemical Component Dictionary. The Link column lists molecule types, if any, to which the group is linked. The Z score for a bond length (or angle) is the number of standard deviations the observed value is removed from the expected value. A bond length (or angle) with $|Z| > 2$ is considered an outlier worth inspection. RMSZ is the root-mean-square of all Z scores of the bond lengths (or angles).

Mol	Type	Chain	Res	Link	Bond lengths			Bond angles		
					Counts	RMSZ	$\# Z > 2$	Counts	RMSZ	$\# Z > 2$
1	HIC	E	73	1	8,11,12	1.74	2 (25%)	6,14,16	1.13	1 (16%)
1	HIC	A	73	1	8,11,12	1.70	2 (25%)	6,14,16	1.10	0

In the following table, the Chirals column lists the number of chiral outliers, the number of chiral centers analysed, the number of these observed in the model and the number defined in the Chemical Component Dictionary. Similar counts are reported in the Torsion and Rings columns. '-' means no outliers of that kind were identified.

Mol	Type	Chain	Res	Link	Chirals	Torsions	Rings
1	HIC	E	73	1	-	2/5/6/8	0/1/1/1
1	HIC	A	73	1	-	0/5/6/8	0/1/1/1

All (4) bond length outliers are listed below:

Mol	Chain	Res	Type	Atoms	Z	Observed(Å)	Ideal(Å)
1	E	73	HIC	CD2-CG	3.77	1.41	1.36

Continued on next page...

Continued from previous page...

Mol	Chain	Res	Type	Atoms	Z	Observed(Å)	Ideal(Å)
1	A	73	HIC	CD2-CG	3.73	1.41	1.36
1	A	73	HIC	CZ-NE2	-2.22	1.42	1.48
1	E	73	HIC	CZ-NE2	-2.07	1.42	1.48

All (1) bond angle outliers are listed below:

Mol	Chain	Res	Type	Atoms	Z	Observed(°)	Ideal(°)
1	E	73	HIC	CB-CA-C	-2.01	107.71	111.47

There are no chirality outliers.

All (2) torsion outliers are listed below:

Mol	Chain	Res	Type	Atoms
1	E	73	HIC	CA-CB-CG-ND1
1	E	73	HIC	CA-CB-CG-CD2

There are no ring outliers.

1 monomer is involved in 1 short contact:

Mol	Chain	Res	Type	Clashes	Symm-Clashes
1	A	73	HIC	1	0

5.5 Carbohydrates [i](#)

There are no monosaccharides in this entry.

5.6 Ligand geometry [i](#)

Of 4 ligands modelled in this entry, 2 are monoatomic - leaving 2 for Mogul analysis.

In the following table, the Counts columns list the number of bonds (or angles) for which Mogul statistics could be retrieved, the number of bonds (or angles) that are observed in the model and the number of bonds (or angles) that are defined in the Chemical Component Dictionary. The Link column lists molecule types, if any, to which the group is linked. The Z score for a bond length (or angle) is the number of standard deviations the observed value is removed from the expected value. A bond length (or angle) with $|Z| > 2$ is considered an outlier worth inspection. RMSZ is the root-mean-square of all Z scores of the bond lengths (or angles).

Mol	Type	Chain	Res	Link	Bond lengths			Bond angles		
					Counts	RMSZ	# Z > 2	Counts	RMSZ	# Z > 2
6	ADP	E	402	5	24,29,29	0.93	1 (4%)	29,45,45	1.40	3 (10%)
6	ADP	A	402	5	24,29,29	0.93	1 (4%)	29,45,45	1.35	4 (13%)

In the following table, the Chirals column lists the number of chiral outliers, the number of chiral centers analysed, the number of these observed in the model and the number defined in the Chemical Component Dictionary. Similar counts are reported in the Torsion and Rings columns. '-' means no outliers of that kind were identified.

Mol	Type	Chain	Res	Link	Chirals	Torsions	Rings
6	ADP	E	402	5	-	3/12/32/32	0/3/3/3
6	ADP	A	402	5	-	3/12/32/32	0/3/3/3

All (2) bond length outliers are listed below:

Mol	Chain	Res	Type	Atoms	Z	Observed(Å)	Ideal(Å)
6	E	402	ADP	C5-C4	2.39	1.47	1.40
6	A	402	ADP	C5-C4	2.36	1.47	1.40

The worst 5 of 7 bond angle outliers are listed below:

Mol	Chain	Res	Type	Atoms	Z	Observed(°)	Ideal(°)
6	E	402	ADP	PA-O3A-PB	-3.70	120.14	132.83
6	A	402	ADP	N3-C2-N1	-3.10	123.83	128.68
6	A	402	ADP	C3'-C2'-C1'	3.07	105.61	100.98
6	E	402	ADP	C4-C5-N7	-2.91	106.37	109.40
6	E	402	ADP	N3-C2-N1	-2.80	124.30	128.68

There are no chirality outliers.

5 of 6 torsion outliers are listed below:

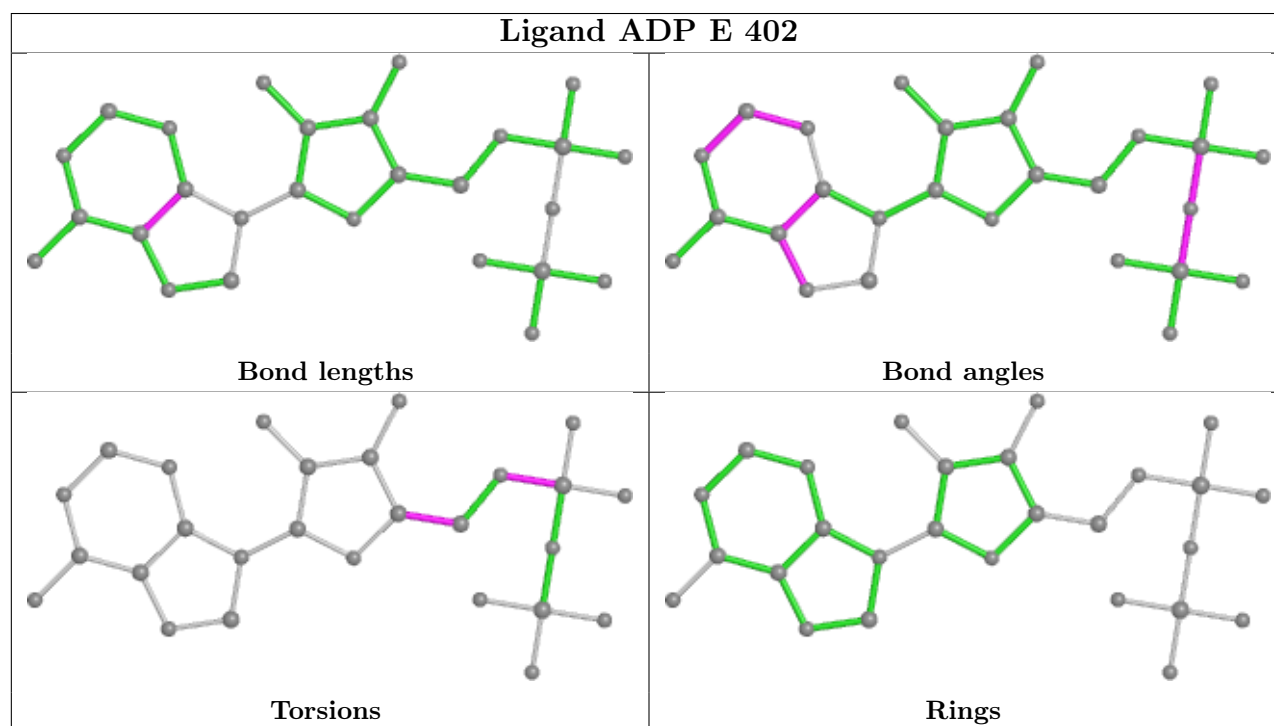
Mol	Chain	Res	Type	Atoms
6	A	402	ADP	O4'-C4'-C5'-O5'
6	A	402	ADP	C3'-C4'-C5'-O5'
6	E	402	ADP	C3'-C4'-C5'-O5'
6	E	402	ADP	O4'-C4'-C5'-O5'
6	E	402	ADP	C5'-O5'-PA-O1A

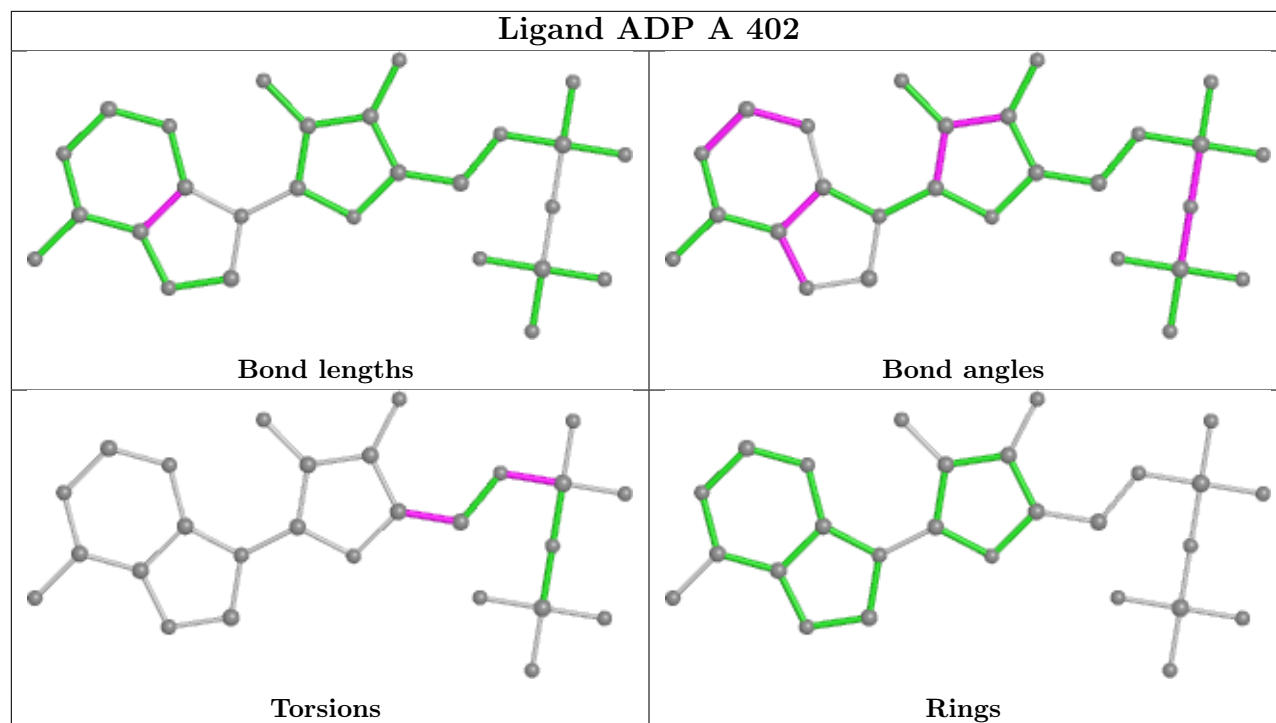
There are no ring outliers.

2 monomers are involved in 3 short contacts:

Mol	Chain	Res	Type	Clashes	Symm-Clashes
6	E	402	ADP	1	0
6	A	402	ADP	2	0

The following is a two-dimensional graphical depiction of Mogul quality analysis of bond lengths, bond angles, torsion angles, and ring geometry for all instances of the Ligand of Interest. In addition, ligands with molecular weight > 250 and outliers as shown on the validation Tables will also be included. For torsion angles, if less than 5% of the Mogul distribution of torsion angles is within 10 degrees of the torsion angle in question, then that torsion angle is considered an outlier. Any bond that is central to one or more torsion angles identified as an outlier by Mogul will be highlighted in the graph. For rings, the root-mean-square deviation (RMSD) between the ring in question and similar rings identified by Mogul is calculated over all ring torsion angles. If the average RMSD is greater than 60 degrees and the minimal RMSD between the ring in question and any Mogul-identified rings is also greater than 60 degrees, then that ring is considered an outlier. The outliers are highlighted in purple. The color gray indicates Mogul did not find sufficient equivalents in the CSD to analyse the geometry.





5.7 Other polymers [i](#)

There are no such residues in this entry.

5.8 Polymer linkage issues [i](#)

There are no chain breaks in this entry.

6 Fit of model and data [i](#)

6.1 Protein, DNA and RNA chains [i](#)

In the following table, the column labelled ‘#RSRZ > 2’ contains the number (and percentage) of RSRZ outliers, followed by percent RSRZ outliers for the chain as percentile scores relative to all X-ray entries and entries of similar resolution. The OWAB column contains the minimum, median, 95th percentile and maximum values of the occupancy-weighted average B-factor per residue. The column labelled ‘Q < 0.9’ lists the number of (and percentage) of residues with an average occupancy less than 0.9.

Mol	Chain	Analysed	<RSRZ>	#RSRZ>2	OWAB(Å ²)	Q<0.9
1	A	356/377 (94%)	-0.46	5 (1%) 75 63	18, 47, 102, 137	0
1	E	357/377 (94%)	-0.47	4 (1%) 80 69	19, 46, 97, 150	0
2	B	342/350 (97%)	-0.43	1 (0%) 94 92	20, 51, 103, 142	0
3	C	269/286 (94%)	-0.49	4 (1%) 73 61	20, 48, 87, 127	0
4	D	248/272 (91%)	-0.24	6 (2%) 59 44	22, 68, 116, 138	0
All	All	1572/1662 (94%)	-0.43	20 (1%) 77 65	18, 51, 104, 150	0

The worst 5 of 20 RSRZ outliers are listed below:

Mol	Chain	Res	Type	RSRZ
1	A	368	SER	6.2
1	A	369	ILE	4.7
4	D	206	CYS	4.0
4	D	205	ASP	4.0
1	E	367	PRO	4.0

6.2 Non-standard residues in protein, DNA, RNA chains [i](#)

In the following table, the Atoms column lists the number of modelled atoms in the group and the number defined in the chemical component dictionary. The B-factors column lists the minimum, median, 95th percentile and maximum values of B factors of atoms in the group. The column labelled ‘Q < 0.9’ lists the number of atoms with occupancy less than 0.9.

Mol	Type	Chain	Res	Atoms	RSCC	RSR	B-factors(Å ²)	Q<0.9
1	HIC	E	73	11/12	0.94	0.19	56,85,89,95	0
1	HIC	A	73	11/12	0.94	0.17	39,49,55,56	0

6.3 Carbohydrates [i](#)

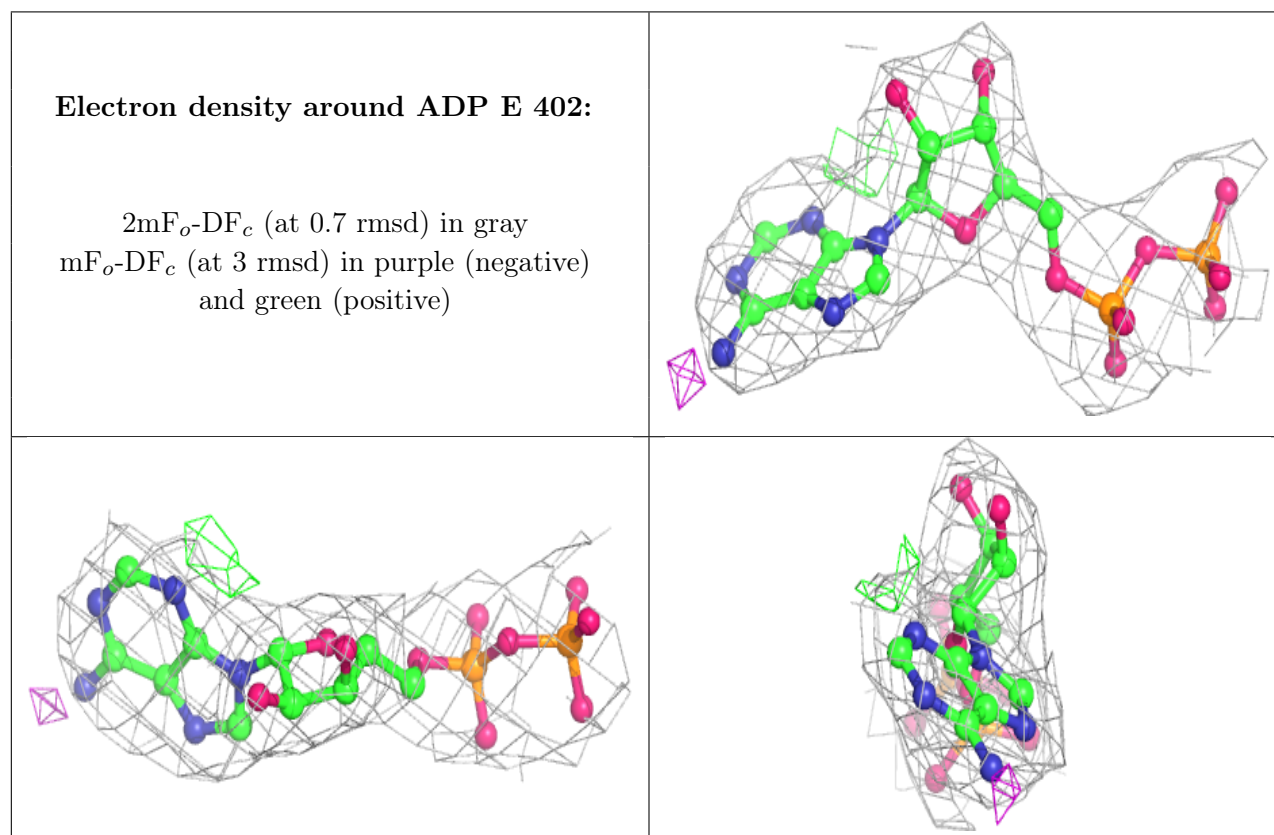
There are no monosaccharides in this entry.

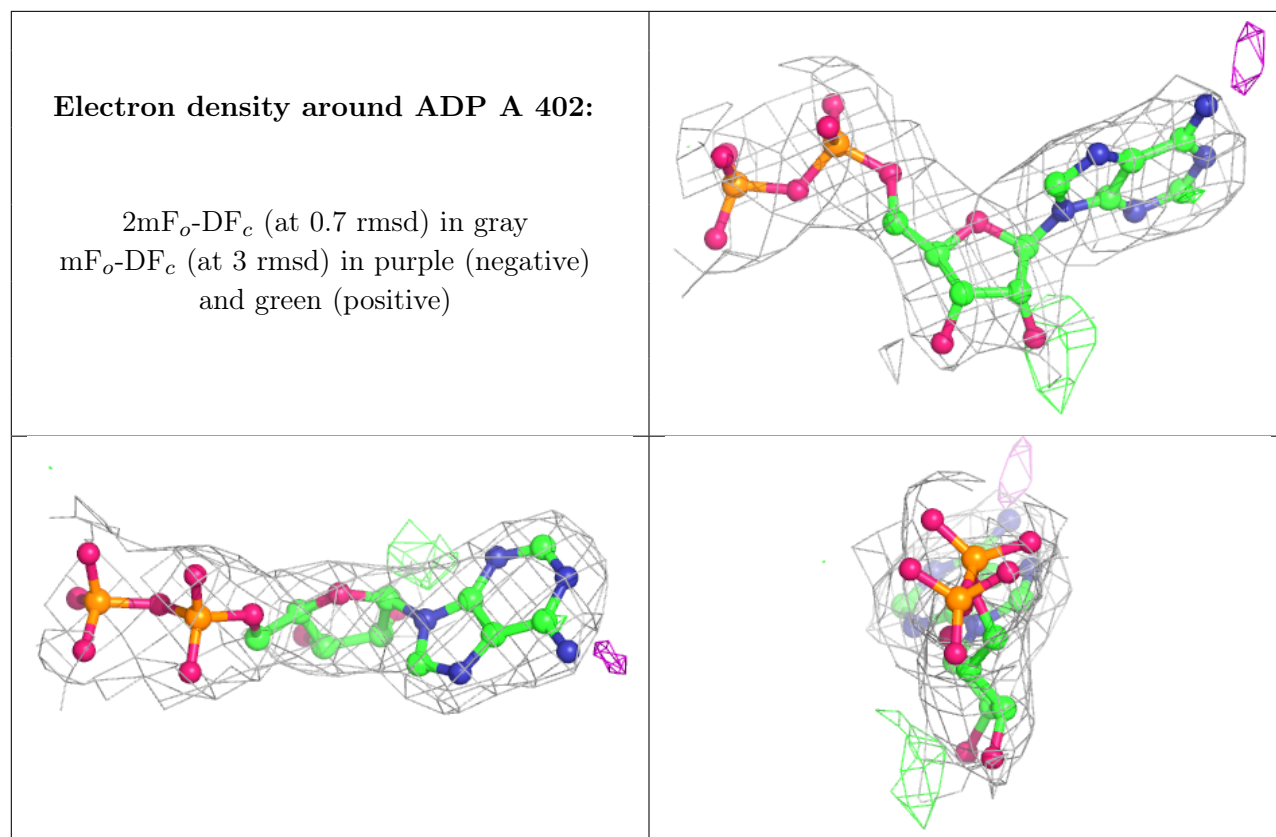
6.4 Ligands [i](#)

In the following table, the Atoms column lists the number of modelled atoms in the group and the number defined in the chemical component dictionary. The B-factors column lists the minimum, median, 95th percentile and maximum values of B factors of atoms in the group. The column labelled 'Q< 0.9' lists the number of atoms with occupancy less than 0.9.

Mol	Type	Chain	Res	Atoms	RSCC	RSR	B-factors(\AA^2)	Q<0.9
6	ADP	E	402	27/27	0.97	0.13	23,25,43,47	0
5	CA	A	401	1/1	0.98	0.08	51,51,51,51	0
6	ADP	A	402	27/27	0.98	0.13	23,33,50,66	0
5	CA	E	401	1/1	1.00	0.11	43,43,43,43	0

The following is a graphical depiction of the model fit to experimental electron density of all instances of the Ligand of Interest. In addition, ligands with molecular weight > 250 and outliers as shown on the geometry validation Tables will also be included. Each fit is shown from different orientation to approximate a three-dimensional view.





6.5 Other polymers [i](#)

There are no such residues in this entry.