



wwPDB X-ray Structure Validation Summary Report ⓘ

Aug 9, 2020 – 03:45 AM BST

PDB ID : 2CDC
Title : Sulfolobus solfataricus Glucose Dehydrogenase 1 in complex with NADP and Xylose
Authors : Milburn, C.C.; Lamb, H.J.; Theodossis, A.; Hough, D.W.; Danson, M.J.; Taylor, G.L.
Deposited on : 2006-01-23
Resolution : 1.50 Å(reported)

This is a wwPDB X-ray Structure Validation Summary Report for a publicly released PDB entry.

We welcome your comments at validation@mail.wwpdb.org

A user guide is available at

<https://www.wwpdb.org/validation/2017/XrayValidationReportHelp>

with specific help available everywhere you see the ⓘ symbol.

The following versions of software and data (see [references ⓘ](#)) were used in the production of this report:

MolProbity : 4.02b-467
Mogul : 1.8.5 (274361), CSD as541be (2020)
Xtriage (Phenix) : 1.13
EDS : 2.13.1
buster-report : 1.1.7 (2018)
Percentile statistics : 20191225.v01 (using entries in the PDB archive December 25th 2019)
Refmac : 5.8.0158
CCP4 : 7.0.044 (Gargrove)
Ideal geometry (proteins) : Engh & Huber (2001)
Ideal geometry (DNA, RNA) : Parkinson et al. (1996)
Validation Pipeline (wwPDB-VP) : 2.13.1

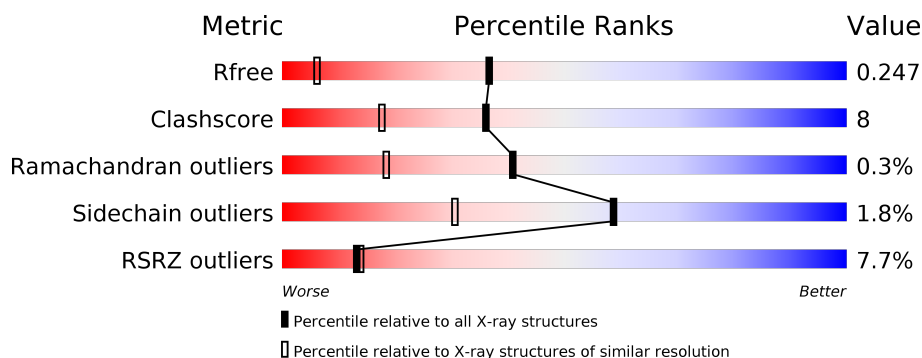
1 Overall quality at a glance ⓘ

The following experimental techniques were used to determine the structure:

X-RAY DIFFRACTION

The reported resolution of this entry is 1.50 Å.

Percentile scores (ranging between 0-100) for global validation metrics of the entry are shown in the following graphic. The table shows the number of entries on which the scores are based.



Metric	Whole archive (#Entries)	Similar resolution (#Entries, resolution range(Å))
R_{free}	130704	2936 (1.50-1.50)
Clashscore	141614	3144 (1.50-1.50)
Ramachandran outliers	138981	3066 (1.50-1.50)
Sidechain outliers	138945	3064 (1.50-1.50)
RSRZ outliers	127900	2884 (1.50-1.50)

The table below summarises the geometric issues observed across the polymeric chains and their fit to the electron density. The red, orange, yellow and green segments on the lower bar indicate the fraction of residues that contain outliers for ≥ 3 , 2, 1 and 0 types of geometric quality criteria respectively. A grey segment represents the fraction of residues that are not modelled. The numeric value for each fraction is indicated below the corresponding segment, with a dot representing fractions $\leq 5\%$. The upper red bar (where present) indicates the fraction of residues that have poor fit to the electron density. The numeric value is given above the bar.

Mol	Chain	Length	Quality of chain
1	A	366	<div> <div>9%</div> <div>83%</div> <div>14%</div> <div>••</div> </div>
1	B	366	<div> <div>9%</div> <div>86%</div> <div>12%</div> <div>•</div> </div>
1	C	366	<div> <div>6%</div> <div>86%</div> <div>11%</div> <div>••</div> </div>
1	D	366	<div> <div>6%</div> <div>86%</div> <div>10%</div> <div>••</div> </div>

2 Entry composition

There are 7 unique types of molecules in this entry. The entry contains 13649 atoms, of which 0 are hydrogens and 0 are deuteriums.

In the tables below, the ZeroOcc column contains the number of atoms modelled with zero occupancy, the AltConf column contains the number of residues with at least one atom in alternate conformation and the Trace column contains the number of residues modelled with at most 2 atoms.

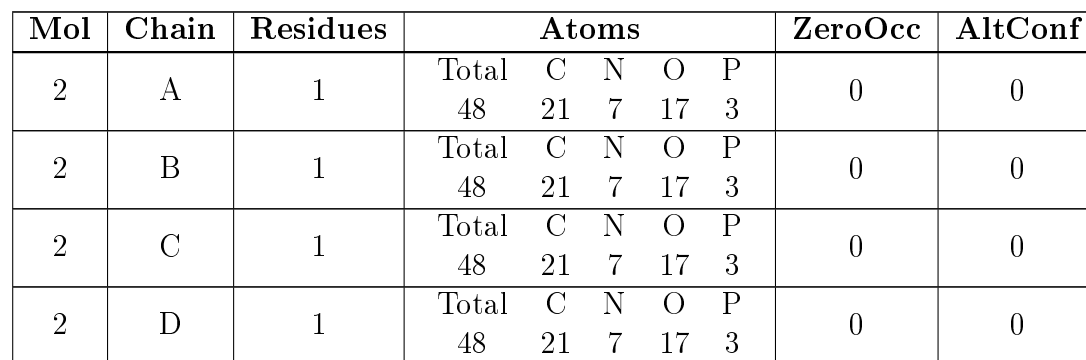
- Molecule 1 is a protein called GLUCOSE DEHYDROGENASE GLUCOSE 1-DEHYDROGENASE, DHG-1.

Mol	Chain	Residues	Atoms					ZeroOcc	AltConf	Trace
1	A	359	Total	C	N	O	S	0	34	0
			2969	1902	501	552	14			
1	B	359	Total	C	N	O	S	0	26	0
			2937	1881	497	546	13			
1	C	359	Total	C	N	O	S	0	22	0
			2929	1875	497	543	14			
1	D	359	Total	C	N	O	S	0	22	0
			2922	1868	496	543	15			

There are 4 discrepancies between the modelled and reference sequences:

Chain	Residue	Modelled	Actual	Comment	Reference
A	41	ALA	THR	engineered mutation	UNP O93715
B	41	ALA	THR	engineered mutation	UNP O93715
C	41	ALA	THR	engineered mutation	UNP O93715
D	41	ALA	THR	engineered mutation	UNP O93715

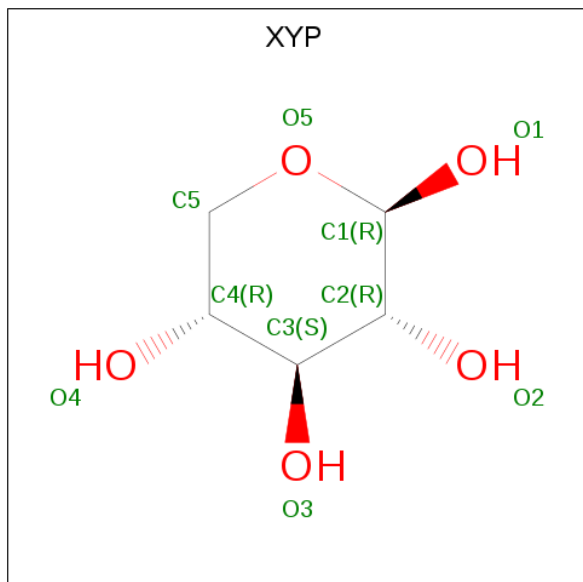
- Molecule 2 is NADP NICOTINAMIDE-ADENINE-DINUCLEOTIDE PHOSPHATE (three-letter code: NAP) (formula: C₂₁H₂₈N₇O₁₇P₃).



-
- XYS
- O5
- O1
- C5
- C1(S)
- C4(R)
- C2(R)
- C3(S)
- O4
- O2
- O3

Mol	Chain	Residues	Atoms			ZeroOcc	AltConf
3	A	1	Total	C	O	0	1
			10	5	5		
3	A	1	Total	C	O	0	0
			10	5	5		
3	B	1	Total	C	O	0	0
			10	5	5		
3	C	1	Total	C	O	0	0
			10	5	5		
3	D	1	Total	C	O	0	1
			10	5	5		
3	D	1	Total	C	O	0	0
			10	5	5		

- Molecule 4 is beta-D-xylopyranose (three-letter code: XYP) (formula: C₅H₁₀O₅).

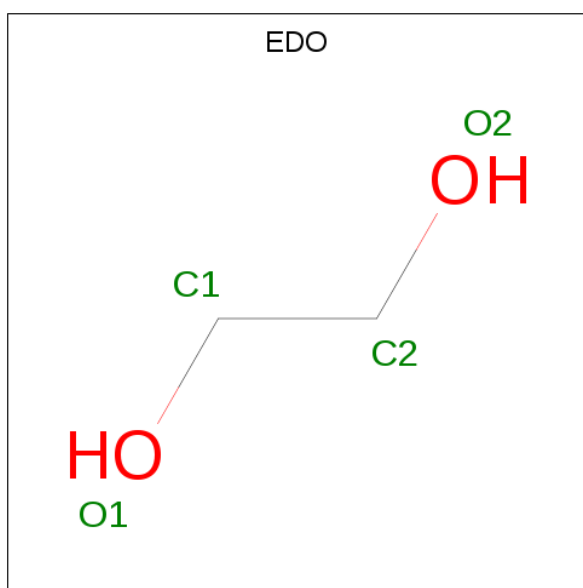


Mol	Chain	Residues	Atoms			ZeroOcc	AltConf
4	A	1	Total	C	O	0	1
			10	5	5		
4	B	1	Total	C	O	0	0
			10	5	5		
4	C	1	Total	C	O	0	0
			10	5	5		
4	D	1	Total	C	O	0	1
			10	5	5		

- Molecule 5 is ZINC ION (three-letter code: ZN) (formula: Zn).

Mol	Chain	Residues	Atoms		ZeroOcc	AltConf
5	B	2	Total 2	Zn 2	0	0
5	A	2	Total 2	Zn 2	0	0
5	D	2	Total 2	Zn 2	0	0
5	C	2	Total 2	Zn 2	0	0

- Molecule 6 is 1,2-ETHANEDIOL (three-letter code: EDO) (formula: C₂H₆O₂).



Mol	Chain	Residues	Atoms			ZeroOcc	AltConf
6	B	1	Total 4	C 2	O 2	0	0
6	C	1	Total 4	C 2	O 2	0	0
6	D	1	Total 4	C 2	O 2	0	0

- Molecule 7 is water.

Mol	Chain	Residues	Atoms		ZeroOcc	AltConf
7	A	376	Total 376	O 376	0	0
7	B	401	Total 401	O 401	0	0
7	C	411	Total 411	O 411	0	0

Continued on next page...

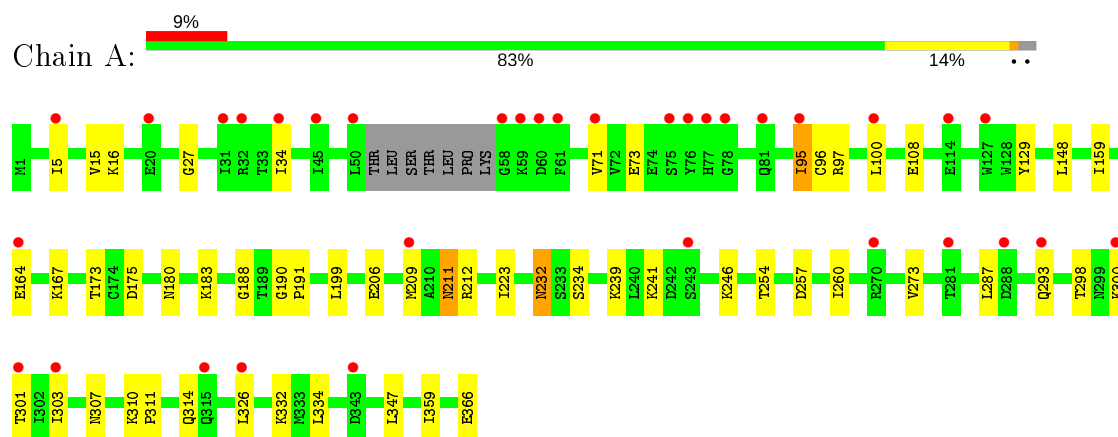
Continued from previous page...

Mol	Chain	Residues	Atoms		ZeroOcc	AltConf
7	D	392	Total	O	0	0
			392	392		

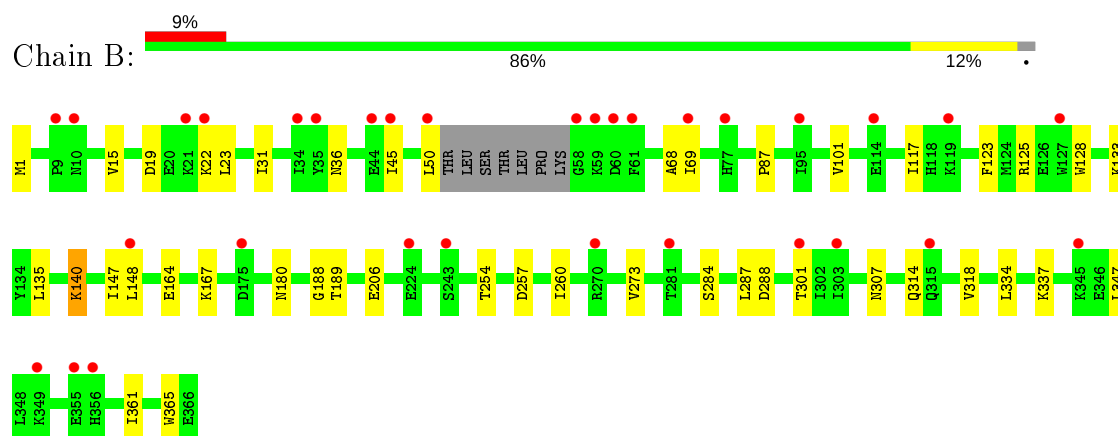
3 Residue-property plots

These plots are drawn for all protein, RNA, DNA and oligosaccharide chains in the entry. The first graphic for a chain summarises the proportions of the various outlier classes displayed in the second graphic. The second graphic shows the sequence view annotated by issues in geometry and electron density. Residues are color-coded according to the number of geometric quality criteria for which they contain at least one outlier: green = 0, yellow = 1, orange = 2 and red = 3 or more. A red dot above a residue indicates a poor fit to the electron density ($RSRZ > 2$). Stretches of 2 or more consecutive residues without any outlier are shown as a green connector. Residues present in the sample, but not in the model, are shown in grey.

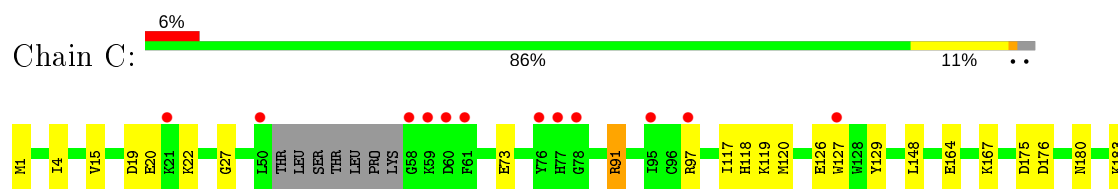
- Molecule 1: GLUCOSE DEHYDROGENASE GLUCOSE 1-DEHYDROGENASE, DHG-1

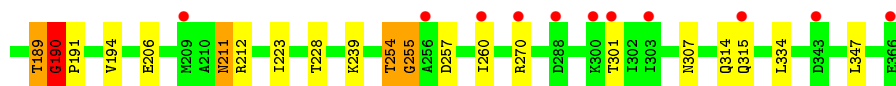


- Molecule 1: GLUCOSE DEHYDROGENASE GLUCOSE 1-DEHYDROGENASE, DHG-1

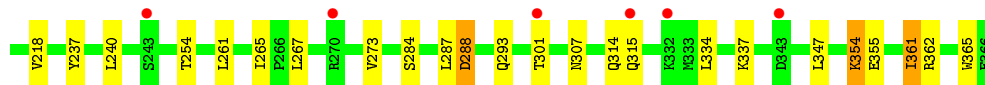
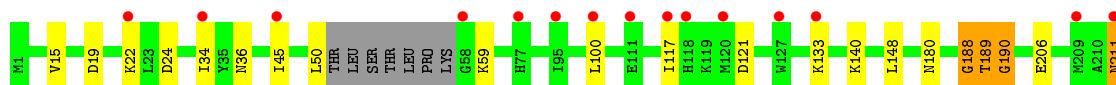
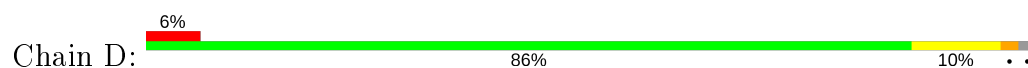


- Molecule 1: GLUCOSE DEHYDROGENASE GLUCOSE 1-DEHYDROGENASE, DHG-1





- Molecule 1: GLUCOSE DEHYDROGENASE GLUCOSE 1-DEHYDROGENASE, DHG-1



4 Data and refinement statistics

Property	Value	Source
Space group	P 1 21 1	Depositor
Cell constants a, b, c, α , β , γ	68.64Å 91.03Å 138.72Å 90.00° 89.98° 90.00°	Depositor
Resolution (Å)	138.68 – 1.50 41.23 – 1.50	Depositor EDS
% Data completeness (in resolution range)	93.0 (138.68-1.50) 92.9 (41.23-1.50)	Depositor EDS
R_{merge}	0.05	Depositor
R_{sym}	(Not available)	Depositor
$\langle I/\sigma(I) \rangle$ ¹	1.95 (at 1.50Å)	Xtriage
Refinement program	REFMAC 5.2.0005	Depositor
R, R_{free}	0.204 , 0.239 0.213 , 0.247	Depositor DCC
R_{free} test set	12721 reflections (5.02%)	wwPDB-VP
Wilson B-factor (Å ²)	13.1	Xtriage
Anisotropy	0.490	Xtriage
Bulk solvent k_{sol} (e/Å ³), B_{sol} (Å ²)	0.34 , 34.2	EDS
L-test for twinning ²	$\langle L \rangle = 0.41$, $\langle L^2 \rangle = 0.23$	Xtriage
Estimated twinning fraction	0.279 for h,-k,-l	Xtriage
F_o, F_c correlation	0.96	EDS
Total number of atoms	13649	wwPDB-VP
Average B, all atoms (Å ²)	16.0	wwPDB-VP

Xtriage's analysis on translational NCS is as follows: *The analyses of the Patterson function reveals a significant off-origin peak that is 20.04 % of the origin peak, indicating pseudo-translational symmetry. The chance of finding a peak of this or larger height randomly in a structure without pseudo-translational symmetry is equal to 9.4868e-03.*

¹Intensities estimated from amplitudes.

²Theoretical values of $\langle |L| \rangle$, $\langle L^2 \rangle$ for acentric reflections are 0.5, 0.333 respectively for untwinned datasets, and 0.375, 0.2 for perfectly twinned datasets.

5 Model quality

5.1 Standard geometry

Bond lengths and bond angles in the following residue types are not validated in this section: XYP, ZN, XYS, EDO, NAP

The Z score for a bond length (or angle) is the number of standard deviations the observed value is removed from the expected value. A bond length (or angle) with $|Z| > 5$ is considered an outlier worth inspection. RMSZ is the root-mean-square of all Z scores of the bond lengths (or angles).

Mol	Chain	Bond lengths		Bond angles	
		RMSZ	$\# Z > 5$	RMSZ	$\# Z > 5$
1	A	0.59	2/3145 (0.1%)	0.80	4/4250 (0.1%)
1	B	0.46	0/3072	0.61	0/4147
1	C	0.84	8/3047 (0.3%)	0.73	12/4118 (0.3%)
1	D	1.27	6/3038 (0.2%)	0.84	12/4104 (0.3%)
All	All	0.85	16/12302 (0.1%)	0.75	28/16619 (0.2%)

Chiral center outliers are detected by calculating the chiral volume of a chiral center and verifying if the center is modelled as a planar moiety or with the opposite hand. A planarity outlier is detected by checking planarity of atoms in a peptide group, atoms in a mainchain group or atoms of a sidechain that are expected to be planar.

Mol	Chain	#Chirality outliers	#Planarity outliers
1	C	0	1
1	D	1	0
All	All	1	1

The worst 5 of 16 bond length outliers are listed below:

Mol	Chain	Res	Type	Atoms	Z	Observed(Å)	Ideal(Å)
1	D	189[A]	THR	N-CA	30.69	2.07	1.46
1	D	189[B]	THR	N-CA	30.69	2.07	1.46
1	D	190[A]	GLY	N-CA	28.02	1.88	1.46
1	D	190[B]	GLY	N-CA	28.02	1.88	1.46
1	D	189[A]	THR	CA-CB	20.06	2.05	1.53

The worst 5 of 28 bond angle outliers are listed below:

Mol	Chain	Res	Type	Atoms	Z	Observed(°)	Ideal(°)
1	A	95[A]	ILE	CG1-CB-CG2	-20.44	66.43	111.40
1	A	95[B]	ILE	CG1-CB-CG2	-20.44	66.43	111.40

Continued on next page...

Continued from previous page...

Mol	Chain	Res	Type	Atoms	Z	Observed(°)	Ideal(°)
1	D	189[A]	THR	N-CA-CB	-17.91	76.27	110.30
1	D	189[B]	THR	N-CA-CB	-17.91	76.27	110.30
1	A	95[A]	ILE	CB-CG1-CD1	-12.60	78.63	113.90

All (1) chirality outliers are listed below:

Mol	Chain	Res	Type	Atom
1	D	189[B]	THR	CA

All (1) planarity outliers are listed below:

Mol	Chain	Res	Type	Group
1	C	190[B]	GLY	Mainchain

5.2 Too-close contacts [i](#)

In the following table, the Non-H and H(model) columns list the number of non-hydrogen atoms and hydrogen atoms in the chain respectively. The H(added) column lists the number of hydrogen atoms added and optimized by MolProbity. The Clashes column lists the number of clashes within the asymmetric unit, whereas Symm-Clashes lists symmetry related clashes.

Mol	Chain	Non-H	H(model)	H(added)	Clashes	Symm-Clashes
1	A	2969	0	3029	52	0
1	B	2937	0	3007	47	0
1	C	2929	0	2981	55	0
1	D	2922	0	2972	53	0
2	A	48	0	25	0	0
2	B	48	0	25	0	0
2	C	48	0	25	1	0
2	D	48	0	25	4	0
3	A	20	0	20	1	0
3	B	10	0	10	0	0
3	C	10	0	10	0	0
3	D	20	0	20	0	0
4	A	10	0	0	0	0
4	B	10	0	0	0	0
4	C	10	0	0	0	0
4	D	10	0	0	0	0
5	A	2	0	0	0	0
5	B	2	0	0	0	0
5	C	2	0	0	0	0

Continued on next page...

Continued from previous page...

Mol	Chain	Non-H	H(model)	H(added)	Clashes	Symm-Clashes
5	D	2	0	0	0	0
6	B	4	0	6	0	0
6	C	4	0	6	0	0
6	D	4	0	6	1	0
7	A	376	0	0	8	0
7	B	401	0	0	14	0
7	C	411	0	0	7	0
7	D	392	0	0	12	0
All	All	13649	0	12167	194	0

The all-atom clashscore is defined as the number of clashes found per 1000 atoms (including hydrogen atoms). The all-atom clashscore for this structure is 8.

The worst 5 of 194 close contacts within the same asymmetric unit are listed below, sorted by their clash magnitude.

Atom-1	Atom-2	Interatomic distance (Å)	Clash overlap (Å)
1:A:34[B]:ILE:HD11	1:A:71[B]:VAL:CG2	1.26	1.58
1:C:254[B]:THR:C	1:C:254[B]:THR:CA	1.75	1.52
1:C:255[A]:GLY:N	1:C:255[A]:GLY:CA	1.68	1.51
1:C:189[A]:THR:C	1:C:189[A]:THR:CA	1.83	1.45
1:D:190[A]:GLY:CA	1:D:190[A]:GLY:N	1.88	1.36

There are no symmetry-related clashes.

5.3 Torsion angles [i](#)

5.3.1 Protein backbone [i](#)

In the following table, the Percentiles column shows the percent Ramachandran outliers of the chain as a percentile score with respect to all X-ray entries followed by that with respect to entries of similar resolution.

The Analysed column shows the number of residues for which the backbone conformation was analysed, and the total number of residues.

Mol	Chain	Analysed	Favoured	Allowed	Outliers	Percentiles	
1	A	389/366 (106%)	380 (98%)	8 (2%)	1 (0%)	41	18
1	B	381/366 (104%)	371 (97%)	9 (2%)	1 (0%)	41	18
1	C	377/366 (103%)	364 (97%)	12 (3%)	1 (0%)	41	18

Continued on next page...

Continued from previous page...

Mol	Chain	Analysed	Favoured	Allowed	Outliers	Percentiles	
1	D	377/366 (103%)	368 (98%)	8 (2%)	1 (0%)	41	18
All	All	1524/1464 (104%)	1483 (97%)	37 (2%)	4 (0%)	41	18

All (4) Ramachandran outliers are listed below:

Mol	Chain	Res	Type
1	A	307	ASN
1	B	307	ASN
1	C	307	ASN
1	D	307	ASN

5.3.2 Protein sidechains ⓘ

In the following table, the Percentiles column shows the percent sidechain outliers of the chain as a percentile score with respect to all X-ray entries followed by that with respect to entries of similar resolution.

The Analysed column shows the number of residues for which the sidechain conformation was analysed, and the total number of residues.

Mol	Chain	Analysed	Rotameric	Outliers	Percentiles	
1	A	339/317 (107%)	332 (98%)	7 (2%)	53	23
1	B	331/317 (104%)	328 (99%)	3 (1%)	78	61
1	C	327/317 (103%)	323 (99%)	4 (1%)	71	48
1	D	327/317 (103%)	317 (97%)	10 (3%)	40	11
All	All	1324/1268 (104%)	1300 (98%)	24 (2%)	59	30

5 of 24 residues with a non-rotameric sidechain are listed below:

Mol	Chain	Res	Type
1	C	73	GLU
1	C	239	LYS
1	D	361	ILE
1	C	91	ARG
1	C	211	ASN

Some sidechains can be flipped to improve hydrogen bonding and reduce clashes. 5 of 21 such sidechains are listed below:

Mol	Chain	Res	Type
1	B	293	GLN
1	B	314	GLN
1	D	36	ASN
1	B	259	ASN
1	D	77	HIS

5.3.3 RNA ⓘ

There are no RNA molecules in this entry.

5.4 Non-standard residues in protein, DNA, RNA chains ⓘ

There are no non-standard protein/DNA/RNA residues in this entry.

5.5 Carbohydrates ⓘ

There are no monosaccharides in this entry.

5.6 Ligand geometry ⓘ

Of 25 ligands modelled in this entry, 8 are monoatomic - leaving 17 for Mogul analysis.

In the following table, the Counts columns list the number of bonds (or angles) for which Mogul statistics could be retrieved, the number of bonds (or angles) that are observed in the model and the number of bonds (or angles) that are defined in the Chemical Component Dictionary. The Link column lists molecule types, if any, to which the group is linked. The Z score for a bond length (or angle) is the number of standard deviations the observed value is removed from the expected value. A bond length (or angle) with $|Z| > 2$ is considered an outlier worth inspection. RMSZ is the root-mean-square of all Z scores of the bond lengths (or angles).

Mol	Type	Chain	Res	Link	Bond lengths			Bond angles		
					Counts	RMSZ	# $ Z > 2$	Counts	RMSZ	# $ Z > 2$
3	XYS	A	1370	-	10,10,10	0.86	0	14,14,14	1.30	1 (7%)
4	XYP	A	1369[B]	-	10,10,10	1.21	1 (10%)	14,14,14	1.09	0
3	XYS	C	1370	-	10,10,10	1.18	1 (10%)	14,14,14	1.18	1 (7%)
3	XYS	D	1371	-	10,10,10	1.01	1 (10%)	14,14,14	0.99	1 (7%)
4	XYP	D	1370[B]	-	10,10,10	1.18	1 (10%)	14,14,14	0.83	0
2	NAP	B	1368	-	45,52,52	1.26	3 (6%)	56,80,80	1.40	5 (8%)
3	XYS	A	1368[A]	-	10,10,10	1.15	1 (10%)	14,14,14	1.06	0
2	NAP	C	1368	-	45,52,52	1.33	5 (11%)	56,80,80	1.25	4 (7%)

Mol	Type	Chain	Res	Link	Bond lengths			Bond angles		
					Counts	RMSZ	# Z > 2	Counts	RMSZ	# Z > 2
2	NAP	D	1368	-	45,52,52	1.38	6 (13%)	56,80,80	1.31	4 (7%)
3	XYS	D	1369[A]	-	10,10,10	1.17	1 (10%)	14,14,14	0.84	0
4	XYP	C	1369	-	10,10,10	1.12	0	14,14,14	0.73	0
3	XYS	B	1370	-	10,10,10	1.26	1 (10%)	14,14,14	1.03	1 (7%)
6	EDO	C	1367	-	3,3,3	0.60	0	2,2,2	0.09	0
6	EDO	D	1367	-	3,3,3	0.63	0	2,2,2	0.03	0
4	XYP	B	1369	-	10,10,10	1.17	2 (20%)	14,14,14	0.72	0
6	EDO	B	1367	-	3,3,3	0.63	0	2,2,2	0.17	0
2	NAP	A	1367	-	45,52,52	1.36	6 (13%)	56,80,80	1.36	5 (8%)

In the following table, the Chirals column lists the number of chiral outliers, the number of chiral centers analysed, the number of these observed in the model and the number defined in the Chemical Component Dictionary. Similar counts are reported in the Torsion and Rings columns. '-' means no outliers of that kind were identified.

Mol	Type	Chain	Res	Link	Chirals	Torsions	Rings
3	XYS	A	1370	-	-	-	0/1/1/1
4	XYP	A	1369[B]	-	-	-	0/1/1/1
3	XYS	C	1370	-	-	-	0/1/1/1
4	XYP	D	1370[B]	-	-	-	0/1/1/1
3	XYS	D	1371	-	-	-	0/1/1/1
2	NAP	B	1368	-	-	7/31/67/67	0/5/5/5
3	XYS	A	1368[A]	-	-	-	0/1/1/1
2	NAP	C	1368	-	-	7/31/67/67	0/5/5/5
2	NAP	D	1368	-	-	7/31/67/67	0/5/5/5
3	XYS	D	1369[A]	-	-	-	0/1/1/1
4	XYP	C	1369	-	-	-	0/1/1/1
3	XYS	B	1370	-	-	-	0/1/1/1
6	EDO	C	1367	-	-	0/1/1/1	-
6	EDO	D	1367	-	-	0/1/1/1	-
4	XYP	B	1369	-	-	-	0/1/1/1
6	EDO	B	1367	-	-	0/1/1/1	-
2	NAP	A	1367	-	-	7/31/67/67	0/5/5/5

The worst 5 of 29 bond length outliers are listed below:

Mol	Chain	Res	Type	Atoms	Z	Observed(Å)	Ideal(Å)
2	A	1367	NAP	C2N-N1N	4.64	1.40	1.35
2	D	1368	NAP	C2N-N1N	4.63	1.40	1.35
2	B	1368	NAP	C2N-N1N	4.53	1.40	1.35

Continued on next page...

Continued from previous page...

Mol	Chain	Res	Type	Atoms	Z	Observed(Å)	Ideal(Å)
2	C	1368	NAP	C2N-N1N	4.32	1.40	1.35
2	C	1368	NAP	P2B-O1X	4.08	1.63	1.50

The worst 5 of 22 bond angle outliers are listed below:

Mol	Chain	Res	Type	Atoms	Z	Observed(°)	Ideal(°)
2	A	1367	NAP	N3A-C2A-N1A	-5.58	119.96	128.68
2	B	1368	NAP	N3A-C2A-N1A	-5.04	120.80	128.68
2	D	1368	NAP	N3A-C2A-N1A	-4.61	121.47	128.68
2	C	1368	NAP	N3A-C2A-N1A	-4.55	121.57	128.68
2	B	1368	NAP	O4D-C1D-C2D	-4.11	100.92	106.93

There are no chirality outliers.

5 of 28 torsion outliers are listed below:

Mol	Chain	Res	Type	Atoms
2	B	1368	NAP	O4D-C1D-N1N-C2N
2	B	1368	NAP	O4D-C1D-N1N-C6N
2	B	1368	NAP	C2D-C1D-N1N-C2N
2	B	1368	NAP	C2D-C1D-N1N-C6N
2	C	1368	NAP	O4D-C1D-N1N-C2N

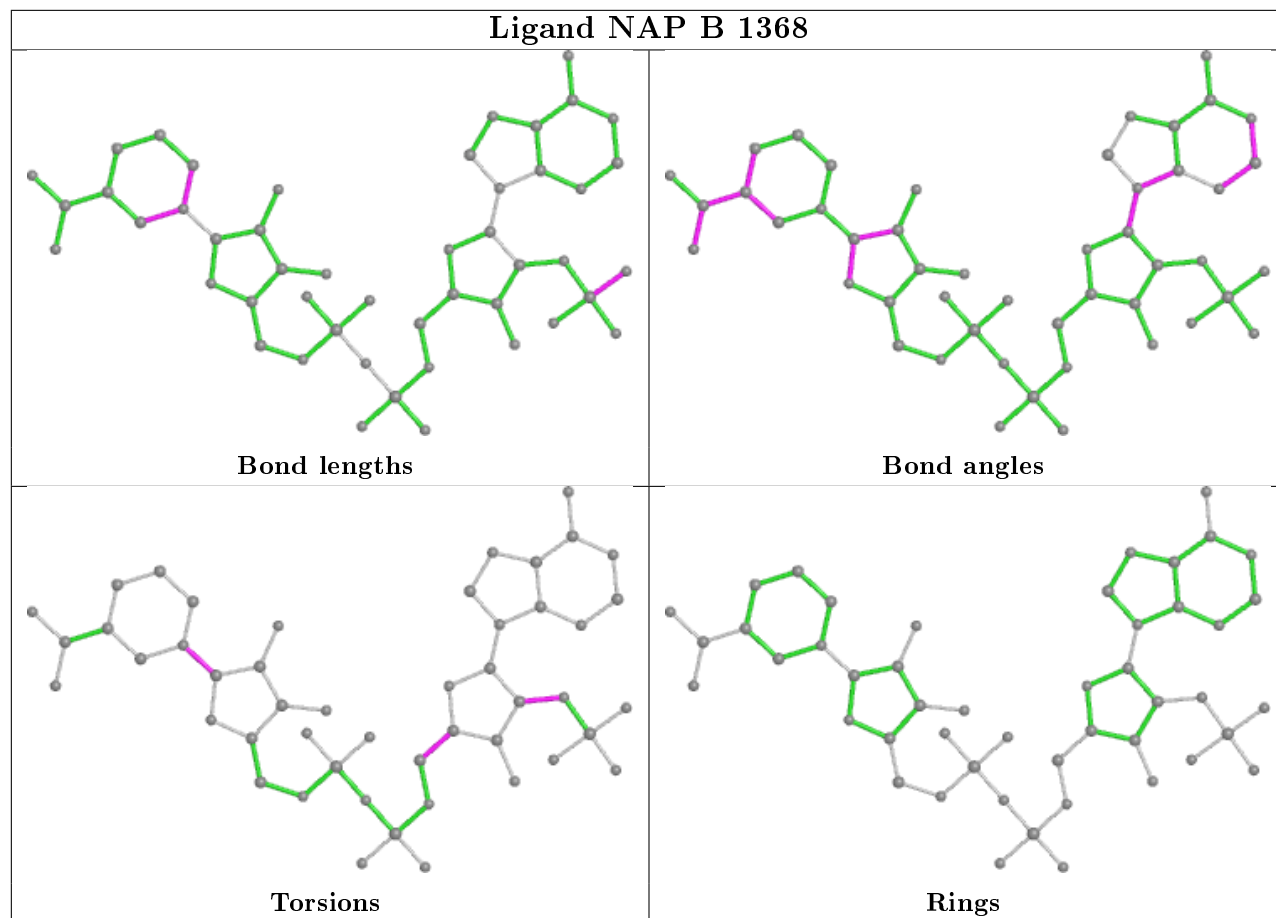
There are no ring outliers.

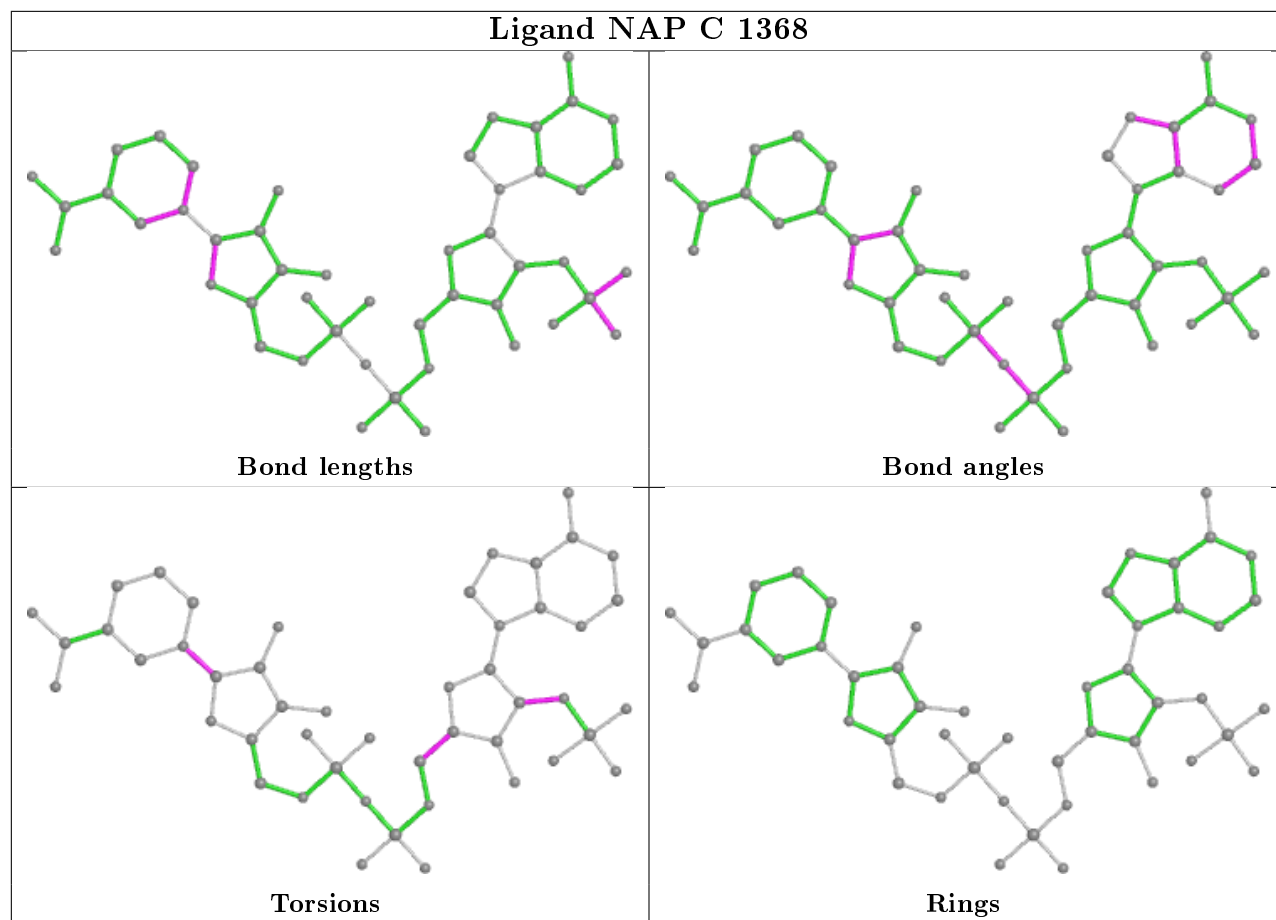
4 monomers are involved in 7 short contacts:

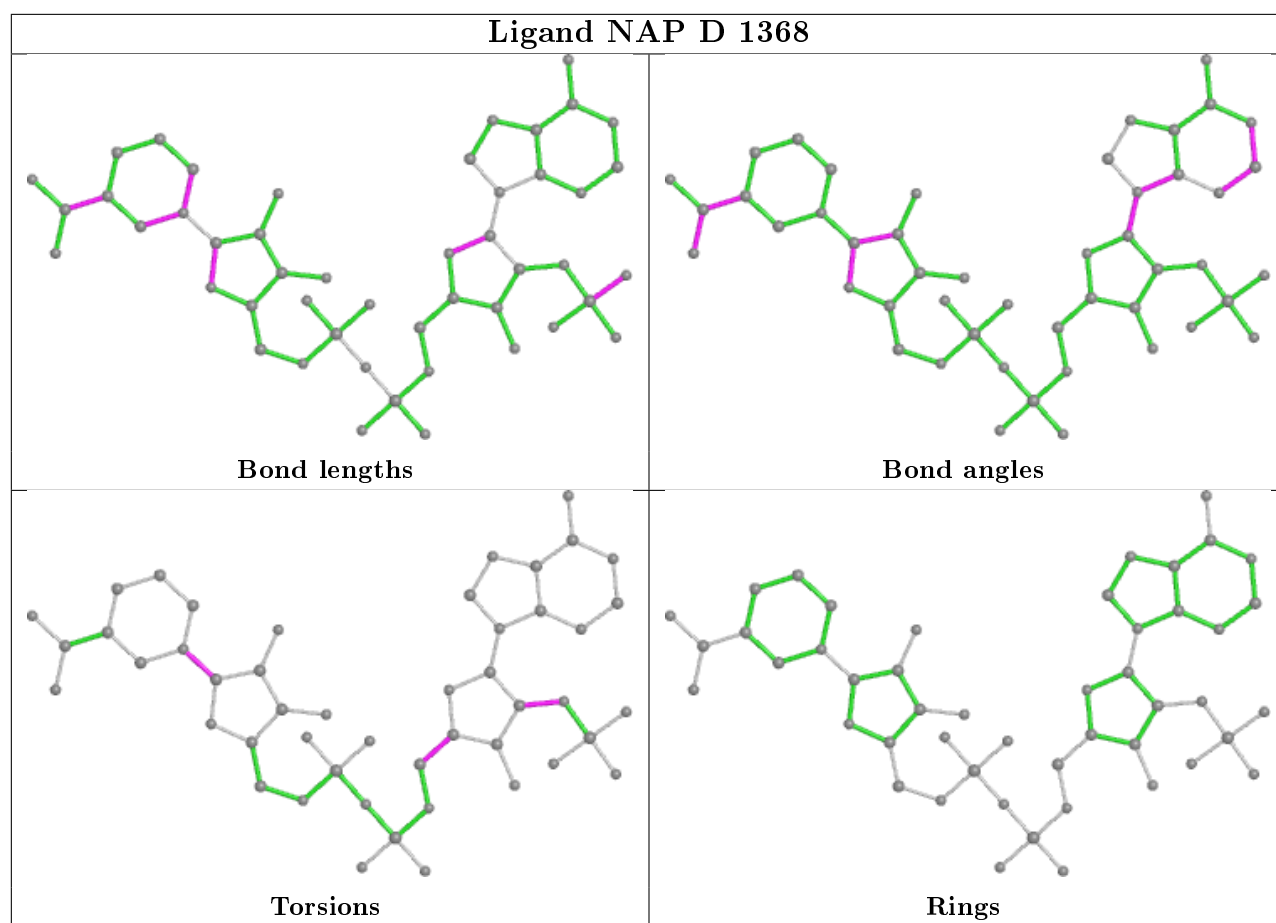
Mol	Chain	Res	Type	Clashes	Symm-Clashes
3	A	1368[A]	XYS	1	0
2	C	1368	NAP	1	0
2	D	1368	NAP	4	0
6	D	1367	EDO	1	0

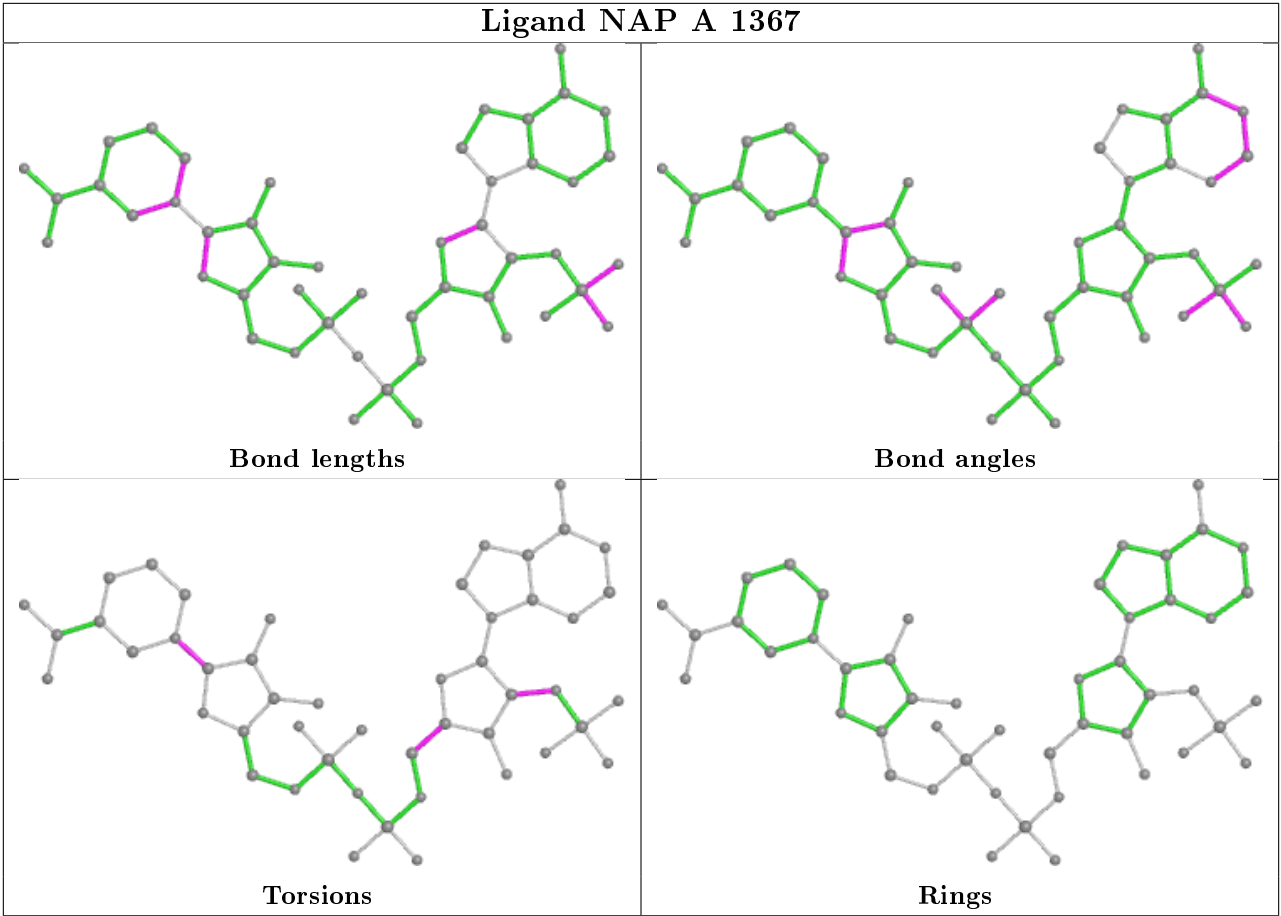
The following is a two-dimensional graphical depiction of Mogul quality analysis of bond lengths, bond angles, torsion angles, and ring geometry for all instances of the Ligand of Interest. In addition, ligands with molecular weight > 250 and outliers as shown on the validation Tables will also be included. For torsion angles, if less than 5% of the Mogul distribution of torsion angles is within 10 degrees of the torsion angle in question, then that torsion angle is considered an outlier. Any bond that is central to one or more torsion angles identified as an outlier by Mogul will be highlighted in the graph. For rings, the root-mean-square deviation (RMSD) between the ring in question and similar rings identified by Mogul is calculated over all ring torsion angles. If the average RMSD is greater than 60 degrees and the minimal RMSD between the ring in question and any Mogul-identified rings is also greater than 60 degrees, then that ring is considered an outlier. The outliers are highlighted in purple. The color gray indicates Mogul did not find sufficient

equivalents in the CSD to analyse the geometry.









5.7 Other polymers ⓘ

There are no such residues in this entry.

5.8 Polymer linkage issues ⓘ

The following chains have linkage breaks:

Mol	Chain	Number of breaks
1	C	1

All chain breaks are listed below:

Model	Chain	Residue-1	Atom-1	Residue-2	Atom-2	Distance (Å)
1	C	190[A]:GLY	C	191[A]:PRO	N	1.67

6 Fit of model and data [i](#)

6.1 Protein, DNA and RNA chains [i](#)

In the following table, the column labelled ‘#RSRZ> 2’ contains the number (and percentage) of RSRZ outliers, followed by percent RSRZ outliers for the chain as percentile scores relative to all X-ray entries and entries of similar resolution. The OWAB column contains the minimum, median, 95th percentile and maximum values of the occupancy-weighted average B-factor per residue. The column labelled ‘Q< 0.9’ lists the number of (and percentage) of residues with an average occupancy less than 0.9.

Mol	Chain	Analysed	<RSRZ>	#RSRZ>2	OWAB(Å ²)	Q<0.9
1	A	359/366 (98%)	0.40	34 (9%) 8 8	7, 13, 25, 33	27 (7%)
1	B	359/366 (98%)	0.31	32 (8%) 9 10	7, 14, 26, 34	19 (5%)
1	C	359/366 (98%)	0.20	23 (6%) 19 20	7, 13, 25, 35	15 (4%)
1	D	359/366 (98%)	0.24	21 (5%) 23 25	7, 14, 25, 33	14 (3%)
All	All	1436/1464 (98%)	0.29	110 (7%) 13 14	7, 14, 25, 35	75 (5%)

The worst 5 of 110 RSRZ outliers are listed below:

Mol	Chain	Res	Type	RSRZ
1	A	77	HIS	8.9
1	A	95[A]	ILE	8.3
1	D	100[A]	LEU	7.9
1	A	5[A]	ILE	7.7
1	A	76[A]	TYR	7.7

6.2 Non-standard residues in protein, DNA, RNA chains [i](#)

There are no non-standard protein/DNA/RNA residues in this entry.

6.3 Carbohydrates [i](#)

There are no monosaccharides in this entry.

6.4 Ligands [i](#)

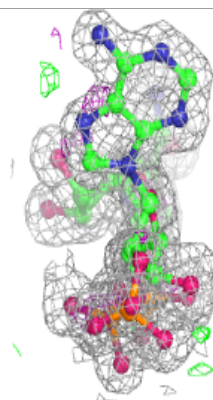
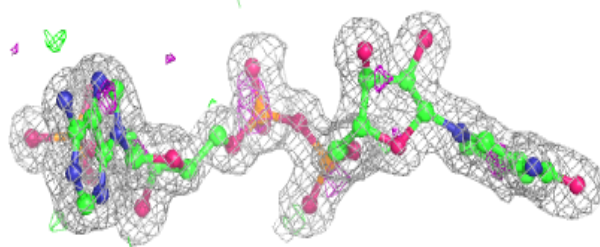
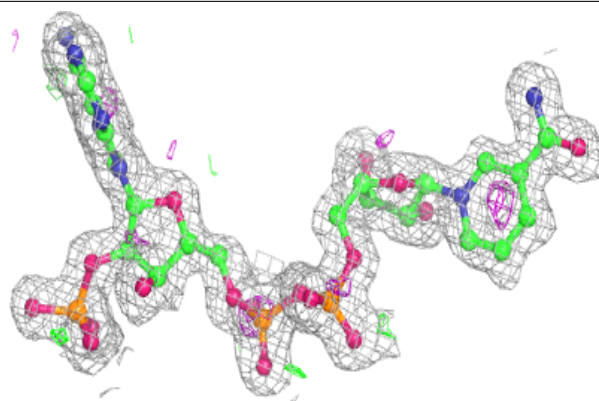
In the following table, the Atoms column lists the number of modelled atoms in the group and the number defined in the chemical component dictionary. The B-factors column lists the minimum, median, 95th percentile and maximum values of B factors of atoms in the group. The column labelled ‘Q< 0.9’ lists the number of atoms with occupancy less than 0.9.

Mol	Type	Chain	Res	Atoms	RSCC	RSR	B-factors(\AA^2)	Q<0.9
4	XYP	D	1370[B]	10/10	0.88	0.17	18,21,22,23	10
4	XYP	B	1369	10/10	0.89	0.12	18,21,24,24	0
3	XYS	D	1369[A]	10/10	0.90	0.18	18,21,22,23	10
4	XYP	C	1369	10/10	0.90	0.14	16,19,20,22	0
3	XYS	C	1370	10/10	0.90	0.09	16,19,20,23	0
3	XYS	B	1370	10/10	0.91	0.13	13,15,17,19	0
3	XYS	A	1370	10/10	0.91	0.12	15,17,19,20	0
4	XYP	A	1369[B]	10/10	0.94	0.14	13,17,19,20	10
3	XYS	D	1371	10/10	0.95	0.10	12,15,17,18	0
3	XYS	A	1368[A]	10/10	0.95	0.15	13,17,19,20	10
2	NAP	B	1368	48/48	0.96	0.09	12,16,18,21	0
2	NAP	D	1368	48/48	0.96	0.09	12,15,17,20	0
2	NAP	A	1367	48/48	0.97	0.06	10,13,16,17	0
2	NAP	C	1368	48/48	0.97	0.07	9,13,17,17	0
6	EDO	C	1367	4/4	0.97	0.07	13,15,16,16	0
6	EDO	B	1367	4/4	0.97	0.07	16,17,18,18	0
6	EDO	D	1367	4/4	0.98	0.07	17,18,19,20	0
5	ZN	D	1373	1/1	0.99	0.06	11,11,11,11	0
5	ZN	B	1372	1/1	0.99	0.06	12,12,12,12	0
5	ZN	C	1372	1/1	0.99	0.06	10,10,10,10	0
5	ZN	D	1372	1/1	1.00	0.06	11,11,11,11	1
5	ZN	A	1371	1/1	1.00	0.05	10,10,10,10	1
5	ZN	B	1371	1/1	1.00	0.04	10,10,10,10	1
5	ZN	C	1371	1/1	1.00	0.06	10,10,10,10	1
5	ZN	A	1372	1/1	1.00	0.07	10,10,10,10	0

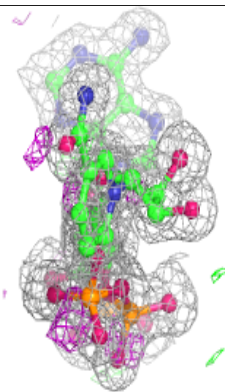
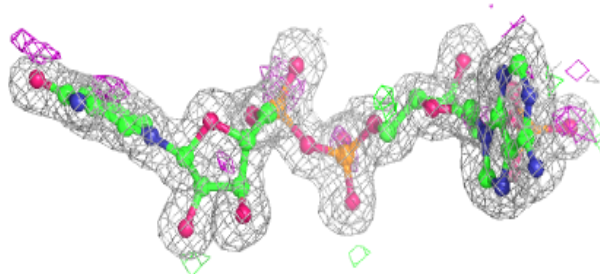
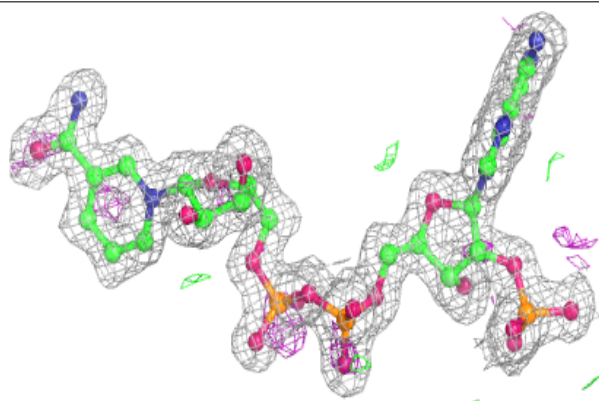
The following is a graphical depiction of the model fit to experimental electron density of all instances of the Ligand of Interest. In addition, ligands with molecular weight > 250 and outliers as shown on the geometry validation Tables will also be included. Each fit is shown from different orientation to approximate a three-dimensional view.

Electron density around NAP B 1368:

$2mF_o-DF_c$ (at 0.7 rmsd) in gray
 mF_o-DF_c (at 3 rmsd) in purple (negative)
and green (positive)

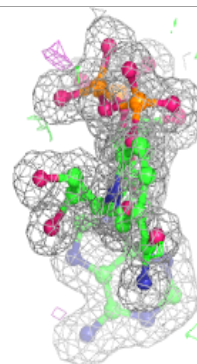
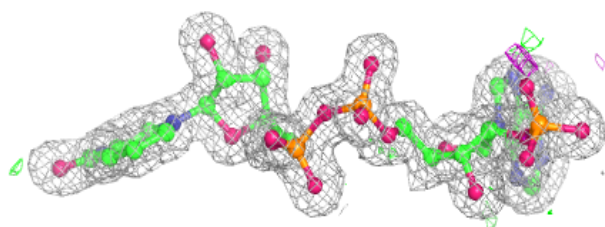
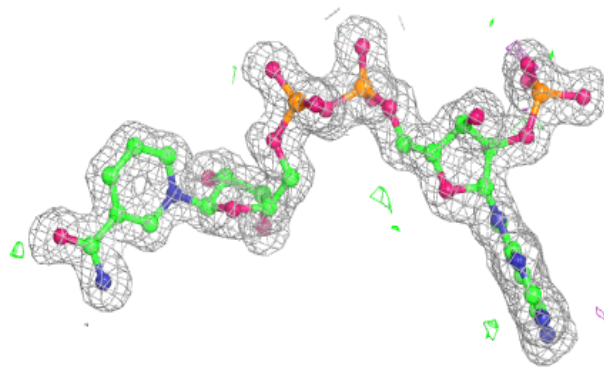
**Electron density around NAP D 1368:**

$2mF_o-DF_c$ (at 0.7 rmsd) in gray
 mF_o-DF_c (at 3 rmsd) in purple (negative)
and green (positive)

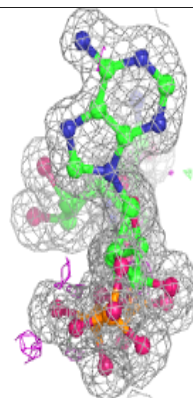
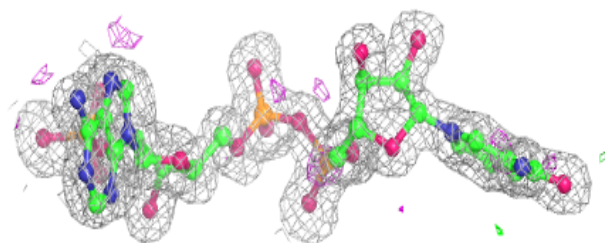
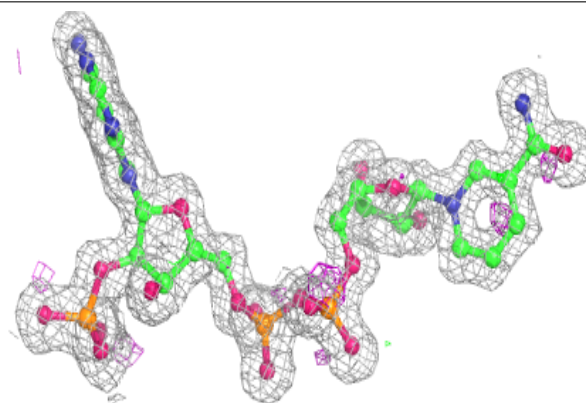


Electron density around NAP A 1367:

$2mF_o-DF_c$ (at 0.7 rmsd) in gray
 mF_o-DF_c (at 3 rmsd) in purple (negative)
and green (positive)

**Electron density around NAP C 1368:**

$2mF_o-DF_c$ (at 0.7 rmsd) in gray
 mF_o-DF_c (at 3 rmsd) in purple (negative)
and green (positive)



6.5 Other polymers [i](#)

There are no such residues in this entry.