



# wwPDB X-ray Structure Validation Summary Report ⓘ

Aug 7, 2020 – 08:37 AM BST

PDB ID : 1CE7  
Title : MISTLETOE LECTIN I FROM VISCUM ALBUM  
Authors : Krauspenhaar, R.; Eschenburg, S.; Perbandt, M.; Kornilov, V.; Konareva, N.;  
Mikailova, I.; Stoeva, S.; Wacker, R.; Maier, T.; Singh, T.P.; Mikhailov, A.;  
Voelter, W.; Betzel, C.  
Deposited on : 1999-03-18  
Resolution : 2.70 Å(reported)

This is a wwPDB X-ray Structure Validation Summary Report for a publicly released PDB entry.

We welcome your comments at [validation@mail.wwpdb.org](mailto:validation@mail.wwpdb.org)

A user guide is available at

<https://www.wwpdb.org/validation/2017/XrayValidationReportHelp>

with specific help available everywhere you see the ⓘ symbol.

---

The following versions of software and data (see [references ⓘ](#)) were used in the production of this report:

MolProbity : 4.02b-467  
Mogul : 1.8.5 (274361), CSD as541be (2020)  
Xtriage (Phenix) : **NOT EXECUTED**  
EDS : **NOT EXECUTED**  
Percentile statistics : 20191225.v01 (using entries in the PDB archive December 25th 2019)  
Ideal geometry (proteins) : Engh & Huber (2001)  
Ideal geometry (DNA, RNA) : Parkinson et al. (1996)  
Validation Pipeline (wwPDB-VP) : 2.13.1

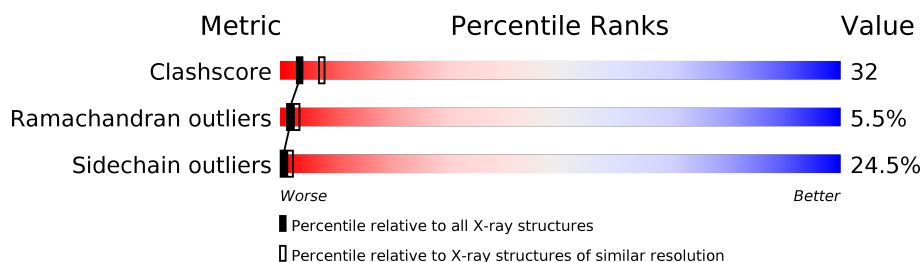
# 1 Overall quality at a glance

The following experimental techniques were used to determine the structure:

*X-RAY DIFFRACTION*

The reported resolution of this entry is 2.70 Å.

Percentile scores (ranging between 0-100) for global validation metrics of the entry are shown in the following graphic. The table shows the number of entries on which the scores are based.



Metric	Whole archive (#Entries)	Similar resolution (#Entries, resolution range(Å))
Clashscore	141614	3122 (2.70-2.70)
Ramachandran outliers	138981	3069 (2.70-2.70)
Sidechain outliers	138945	3069 (2.70-2.70)

The table below summarises the geometric issues observed across the polymeric chains and their fit to the electron density. The red, orange, yellow and green segments on the lower bar indicate the fraction of residues that contain outliers for  $\geq 3$ , 2, 1 and 0 types of geometric quality criteria respectively. A grey segment represents the fraction of residues that are not modelled. The numeric value for each fraction is indicated below the corresponding segment, with a dot representing fractions  $\leq 5\%$

Note EDS was not executed.

Mol	Chain	Length	Quality of chain
1	A	241	
2	B	255	

## 2 Entry composition [i](#)

There are 4 unique types of molecules in this entry. The entry contains 3963 atoms, of which 0 are hydrogens and 0 are deuteriums.

In the tables below, the ZeroOcc column contains the number of atoms modelled with zero occupancy, the AltConf column contains the number of residues with at least one atom in alternate conformation and the Trace column contains the number of residues modelled with at most 2 atoms.

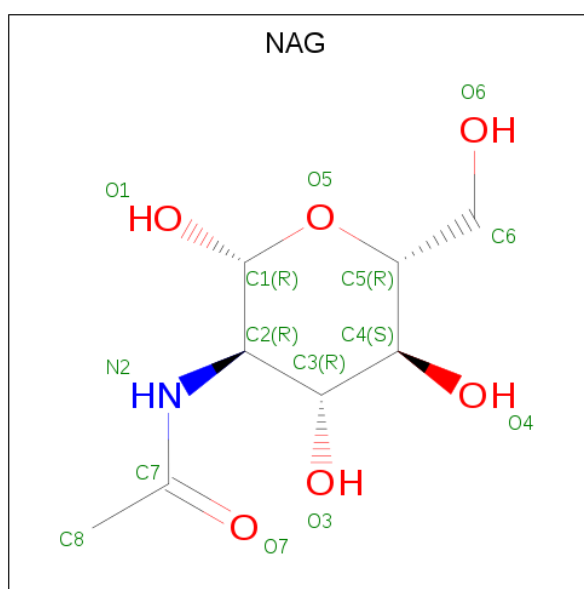
- Molecule 1 is a protein called PROTEIN (RIBOSOME-INACTIVATING PROTEIN TYPE II).

Mol	Chain	Residues	Atoms					ZeroOcc	AltConf	Trace
1	A	241	Total	C	N	O	S	0	0	0
			1809	1145	307	353	4			

- Molecule 2 is a protein called PROTEIN (RIBOSOME-INACTIVATING PROTEIN TYPE II).

Mol	Chain	Residues	Atoms					ZeroOcc	AltConf	Trace
2	B	255	Total	C	N	O	S	0	0	0
			1897	1177	332	376	12			

- Molecule 3 is 2-acetamido-2-deoxy-beta-D-glucopyranose (three-letter code: NAG) (formula:  $C_8H_{15}NO_6$ ).



Mol	Chain	Residues	Atoms				ZeroOcc	AltConf
3	A	1	Total	C	N	O	0	0
			14	8	1	5		

*Continued on next page...*

*Continued from previous page...*

Mol	Chain	Residues	Atoms				ZeroOcc	AltConf
3	B	1	Total	C	N	O	0	0
			14	8	1	5		
3	B	1	Total	C	N	O	0	0
			14	8	1	5		

- Molecule 4 is water.

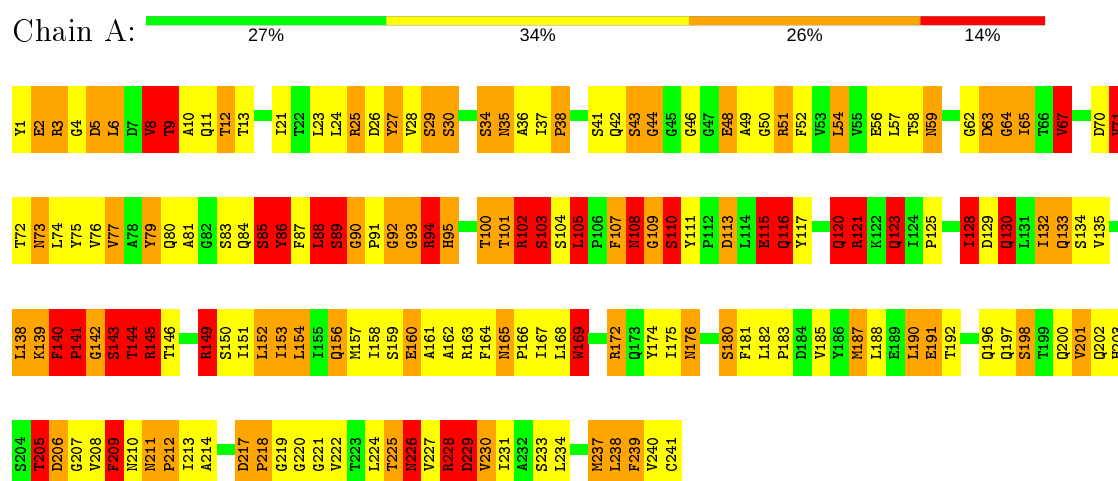
Mol	Chain	Residues	Atoms		ZeroOcc	AltConf
4	A	108	Total	O	0	0
			108	108		
4	B	107	Total	O	0	0
			107	107		

### 3 Residue-property plots

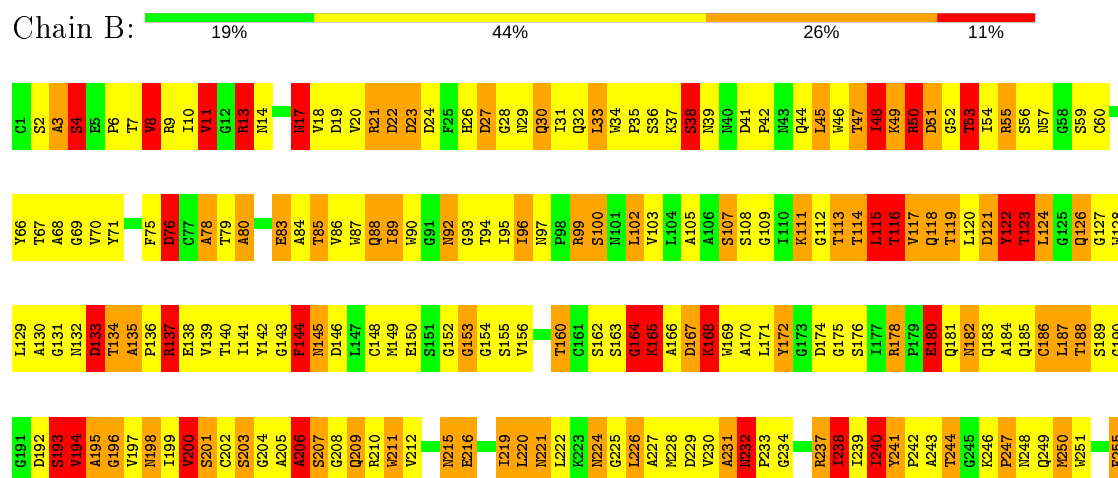
These plots are drawn for all protein, RNA, DNA and oligosaccharide chains in the entry. The first graphic for a chain summarises the proportions of the various outlier classes displayed in the second graphic. The second graphic shows the sequence view annotated by issues in geometry. Residues are color-coded according to the number of geometric quality criteria for which they contain at least one outlier: green = 0, yellow = 1, orange = 2 and red = 3 or more. Stretches of 2 or more consecutive residues without any outlier are shown as a green connector. Residues present in the sample, but not in the model, are shown in grey.

Note EDS was not executed.

- Molecule 1: PROTEIN (RIBOSOME-INACTIVATING PROTEIN TYPE II)



- Molecule 2: PROTEIN (RIBOSOME-INACTIVATING PROTEIN TYPE II)



## 4 Data and refinement statistics

Xtriage (Phenix) and EDS were not executed - this section is therefore incomplete.

Property	Value	Source
Space group	P 65 2 2	Depositor
Cell constants a, b, c, $\alpha$ , $\beta$ , $\gamma$	107.65Å 107.65Å 311.28Å 90.00° 90.00° 120.00°	Depositor
Resolution (Å)	8.00 – 2.70	Depositor
% Data completeness (in resolution range)	99.1 (8.00-2.70)	Depositor
$R_{merge}$	0.03	Depositor
$R_{sym}$	(Not available)	Depositor
Refinement program	REFMAC	Depositor
R, $R_{free}$	0.251 , 0.319	Depositor
Estimated twinning fraction	No twinning to report.	Xtriage
Total number of atoms	3963	wwPDB-VP
Average B, all atoms (Å <sup>2</sup> )	58.0	wwPDB-VP

## 5 Model quality [i](#)

### 5.1 Standard geometry [i](#)

Bond lengths and bond angles in the following residue types are not validated in this section: NAG

The Z score for a bond length (or angle) is the number of standard deviations the observed value is removed from the expected value. A bond length (or angle) with  $|Z| > 5$  is considered an outlier worth inspection. RMSZ is the root-mean-square of all Z scores of the bond lengths (or angles).

Mol	Chain	Bond lengths		Bond angles	
		RMSZ	$\# Z  > 5$	RMSZ	$\# Z  > 5$
1	A	0.81	0/1845	2.94	161/2508 (6.4%)
2	B	0.88	1/1935 (0.1%)	2.85	180/2637 (6.8%)
All	All	0.85	1/3780 (0.0%)	2.89	341/5145 (6.6%)

Chiral center outliers are detected by calculating the chiral volume of a chiral center and verifying if the center is modelled as a planar moiety or with the opposite hand. A planarity outlier is detected by checking planarity of atoms in a peptide group, atoms in a mainchain group or atoms of a sidechain that are expected to be planar.

Mol	Chain	#Chirality outliers	#Planarity outliers
1	A	0	29
2	B	0	50
All	All	0	79

All (1) bond length outliers are listed below:

Mol	Chain	Res	Type	Atoms	Z	Observed(Å)	Ideal(Å)
2	B	186	CYS	CB-SG	-5.46	1.73	1.81

The worst 5 of 341 bond angle outliers are listed below:

Mol	Chain	Res	Type	Atoms	Z	Observed(°)	Ideal(°)
1	A	172	ARG	CD-NE-CZ	36.81	175.13	123.60
1	A	145	ARG	NE-CZ-NH2	-28.22	106.19	120.30
1	A	228	ARG	NE-CZ-NH2	-27.90	106.35	120.30
1	A	145	ARG	NE-CZ-NH1	26.94	133.77	120.30
1	A	149	ARG	CD-NE-CZ	24.12	157.37	123.60

There are no chirality outliers.

5 of 79 planarity outliers are listed below:

Mol	Chain	Res	Type	Group
1	A	2	GLU	Mainchain
1	A	23	LEU	Mainchain
1	A	30	SER	Mainchain
1	A	44	GLY	Mainchain
1	A	50	GLY	Mainchain

## 5.2 Too-close contacts

In the following table, the Non-H and H(model) columns list the number of non-hydrogen atoms and hydrogen atoms in the chain respectively. The H(added) column lists the number of hydrogen atoms added and optimized by MolProbity. The Clashes column lists the number of clashes within the asymmetric unit, whereas Symm-Clashes lists symmetry related clashes.

Mol	Chain	Non-H	H(model)	H(added)	Clashes	Symm-Clashes
1	A	1809	0	1775	113	0
2	B	1897	0	1821	128	1
3	A	14	0	13	4	0
3	B	28	0	26	0	0
4	A	108	0	0	9	2
4	B	107	0	0	9	3
All	All	3963	0	3635	238	5

The all-atom clashscore is defined as the number of clashes found per 1000 atoms (including hydrogen atoms). The all-atom clashscore for this structure is 32.

The worst 5 of 238 close contacts within the same asymmetric unit are listed below, sorted by their clash magnitude.

Atom-1	Atom-2	Interatomic distance (Å)	Clash overlap (Å)
2:B:29:ASN:ND2	2:B:30:GLN:H	1.52	1.05
2:B:121:ASP:H	2:B:126:GLN:NE2	1.56	1.01
1:A:108:ASN:HD21	3:A:303:NAG:C1	1.75	0.98
1:A:102:ARG:NH2	4:A:361:HOH:O	1.94	0.97
1:A:102:ARG:NE	4:A:361:HOH:O	1.82	0.97

All (5) symmetry-related close contacts are listed below. The label for Atom-2 includes the symmetry operator and encoded unit-cell translations to be applied.

Atom-1	Atom-2	Interatomic distance (Å)	Clash overlap (Å)
4:A:336:HOH:O	4:A:336:HOH:O[10_665]	0.98	1.22
4:B:409:HOH:O	4:B:409:HOH:O[12_554]	1.13	1.07

*Continued on next page...*



*Continued from previous page...*

Atom-1	Atom-2	Interatomic distance (Å)	Clash overlap (Å)
4:B:319:HOH:O	4:B:319:HOH:O[12_554]	1.27	0.93
4:A:358:HOH:O	4:A:358:HOH:O[10_665]	1.95	0.25
2:B:69:GLY:O	4:B:319:HOH:O[12_554]	2.11	0.09

## 5.3 Torsion angles [i](#)

### 5.3.1 Protein backbone [i](#)

In the following table, the Percentiles column shows the percent Ramachandran outliers of the chain as a percentile score with respect to all X-ray entries followed by that with respect to entries of similar resolution.

The Analysed column shows the number of residues for which the backbone conformation was analysed, and the total number of residues.

Mol	Chain	Analysed	Favoured	Allowed	Outliers	Percentiles	
1	A	239/241 (99%)	195 (82%)	29 (12%)	15 (6%)	<b>1</b>	<b>2</b>
2	B	253/255 (99%)	217 (86%)	24 (10%)	12 (5%)	<b>2</b>	<b>4</b>
All	All	492/496 (99%)	412 (84%)	53 (11%)	27 (6%)	<b>2</b>	<b>3</b>

5 of 27 Ramachandran outliers are listed below:

Mol	Chain	Res	Type
1	A	89	SER
1	A	94	ARG
1	A	95	HIS
1	A	218	PRO
2	B	80	ALA

### 5.3.2 Protein sidechains [i](#)

In the following table, the Percentiles column shows the percent sidechain outliers of the chain as a percentile score with respect to all X-ray entries followed by that with respect to entries of similar resolution.

The Analysed column shows the number of residues for which the sidechain conformation was analysed, and the total number of residues.

Mol	Chain	Analysed	Rotameric	Outliers	Percentiles	
1	A	193/194 (100%)	136 (70%)	57 (30%)	<b>0</b>	<b>1</b>

*Continued on next page...*

*Continued from previous page...*

Mol	Chain	Analysed	Rotameric	Outliers	Percentiles	
2	B	203/203 (100%)	163 (80%)	40 (20%)	1	3
All	All	396/397 (100%)	299 (76%)	97 (24%)	0	2

5 of 97 residues with a non-rotameric sidechain are listed below:

Mol	Chain	Res	Type
1	A	159	SER
1	A	228	ARG
2	B	187	LEU
1	A	168	LEU
1	A	180	SER

Some sidechains can be flipped to improve hydrogen bonding and reduce clashes. 5 of 22 such sidechains are listed below:

Mol	Chain	Res	Type
1	A	210	ASN
2	B	29	ASN
2	B	221	ASN
1	A	226	ASN
2	B	14	ASN

### 5.3.3 RNA [i](#)

There are no RNA molecules in this entry.

## 5.4 Non-standard residues in protein, DNA, RNA chains [i](#)

There are no non-standard protein/DNA/RNA residues in this entry.

## 5.5 Carbohydrates [i](#)

There are no monosaccharides in this entry.

## 5.6 Ligand geometry [i](#)

3 ligands are modelled in this entry.

In the following table, the Counts columns list the number of bonds (or angles) for which Mogul statistics could be retrieved, the number of bonds (or angles) that are observed in the model and

the number of bonds (or angles) that are defined in the Chemical Component Dictionary. The Link column lists molecule types, if any, to which the group is linked. The Z score for a bond length (or angle) is the number of standard deviations the observed value is removed from the expected value. A bond length (or angle) with  $|Z| > 2$  is considered an outlier worth inspection. RMSZ is the root-mean-square of all Z scores of the bond lengths (or angles).

Mol	Type	Chain	Res	Link	Bond lengths			Bond angles		
					Counts	RMSZ	# Z  > 2	Counts	RMSZ	# Z  > 2
3	NAG	A	303	-	14,14,15	1.12	1 (7%)	17,19,21	2.75	6 (35%)
3	NAG	B	301	2	14,14,15	1.48	2 (14%)	17,19,21	3.35	4 (23%)
3	NAG	B	302	2	14,14,15	1.26	1 (7%)	17,19,21	2.88	9 (52%)

In the following table, the Chirals column lists the number of chiral outliers, the number of chiral centers analysed, the number of these observed in the model and the number defined in the Chemical Component Dictionary. Similar counts are reported in the Torsion and Rings columns. '-' means no outliers of that kind were identified.

Mol	Type	Chain	Res	Link	Chirals	Torsions	Rings
3	NAG	A	303	-	-	6/6/23/26	0/1/1/1
3	NAG	B	301	2	-	2/6/23/26	0/1/1/1
3	NAG	B	302	2	-	2/6/23/26	0/1/1/1

All (4) bond length outliers are listed below:

Mol	Chain	Res	Type	Atoms	Z	Observed(Å)	Ideal(Å)
3	B	301	NAG	O7-C7	-4.11	1.13	1.23
3	A	303	NAG	O7-C7	-3.27	1.15	1.23
3	B	302	NAG	O7-C7	-3.02	1.16	1.23
3	B	301	NAG	O5-C5	-2.11	1.39	1.43

The worst 5 of 19 bond angle outliers are listed below:

Mol	Chain	Res	Type	Atoms	Z	Observed(°)	Ideal(°)
3	B	301	NAG	C1-O5-C5	12.59	129.25	112.19
3	A	303	NAG	C4-C3-C2	-7.73	99.69	111.02
3	B	302	NAG	C3-C4-C5	-5.46	100.50	110.24
3	B	302	NAG	O3-C3-C4	5.25	122.49	110.35
3	B	302	NAG	O4-C4-C3	5.02	121.96	110.35

There are no chirality outliers.

5 of 10 torsion outliers are listed below:

Mol	Chain	Res	Type	Atoms
3	A	303	NAG	C8-C7-N2-C2
3	A	303	NAG	O7-C7-N2-C2
3	A	303	NAG	O5-C5-C6-O6
3	B	301	NAG	O5-C5-C6-O6
3	A	303	NAG	C1-C2-N2-C7

There are no ring outliers.

1 monomer is involved in 4 short contacts:

Mol	Chain	Res	Type	Clashes	Symm-Clashes
3	A	303	NAG	4	0

## 5.7 Other polymers [i](#)

There are no such residues in this entry.

## 5.8 Polymer linkage issues [i](#)

There are no chain breaks in this entry.

## 6 Fit of model and data

### 6.1 Protein, DNA and RNA chains

EDS was not executed - this section is therefore empty.

### 6.2 Non-standard residues in protein, DNA, RNA chains

EDS was not executed - this section is therefore empty.

### 6.3 Carbohydrates

EDS was not executed - this section is therefore empty.

### 6.4 Ligands

EDS was not executed - this section is therefore empty.

### 6.5 Other polymers

EDS was not executed - this section is therefore empty.