



# wwPDB X-ray Structure Validation Summary Report ⓘ

May 25, 2020 – 10:37 pm BST

PDB ID : 2CG9  
Title : Crystal structure of an Hsp90-Sba1 closed chaperone complex  
Authors : Ali, M.M.U.; Roe, S.M.; Prodromou, C.; Pearl, L.H.  
Deposited on : 2006-03-01  
Resolution : 3.10 Å(reported)

This is a wwPDB X-ray Structure Validation Summary Report for a publicly released PDB entry.

We welcome your comments at [validation@mail.wwpdb.org](mailto:validation@mail.wwpdb.org)

A user guide is available at

<https://www.wwpdb.org/validation/2017/XrayValidationReportHelp>

with specific help available everywhere you see the ⓘ symbol.

---

The following versions of software and data (see [references ⓘ](#)) were used in the production of this report:

MolProbity : 4.02b-467  
Mogul : 1.8.5 (274361), CSD as541be (2020)  
Xtriage (Phenix) : 1.13  
EDS : 2.11  
buster-report : 1.1.7 (2018)  
Percentile statistics : 20191225.v01 (using entries in the PDB archive December 25th 2019)  
Refmac : 5.8.0158  
CCP4 : 7.0.044 (Gargrove)  
Ideal geometry (proteins) : Engh & Huber (2001)  
Ideal geometry (DNA, RNA) : Parkinson et al. (1996)  
Validation Pipeline (wwPDB-VP) : 2.11



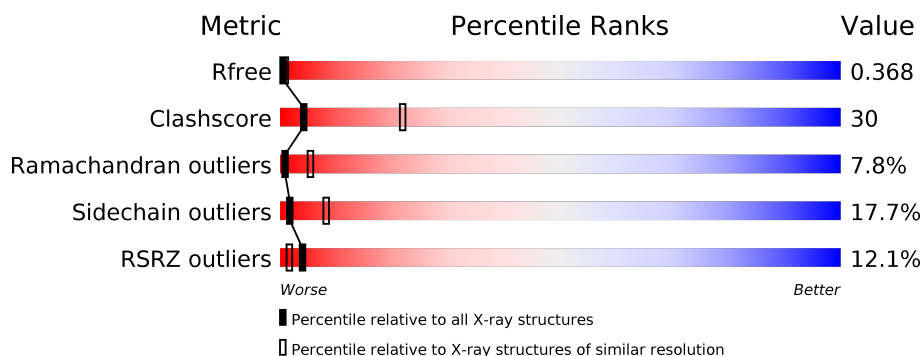
# 1 Overall quality at a glance

The following experimental techniques were used to determine the structure:

## *X-RAY DIFFRACTION*

The reported resolution of this entry is 3.10 Å.

Percentile scores (ranging between 0-100) for global validation metrics of the entry are shown in the following graphic. The table shows the number of entries on which the scores are based.



Metric	Whole archive (#Entries)	Similar resolution (#Entries, resolution range(Å))
$R_{free}$	130704	1094 (3.10-3.10)
Clashscore	141614	1184 (3.10-3.10)
Ramachandran outliers	138981	1141 (3.10-3.10)
Sidechain outliers	138945	1141 (3.10-3.10)
RSRZ outliers	127900	1067 (3.10-3.10)

The table below summarises the geometric issues observed across the polymeric chains and their fit to the electron density. The red, orange, yellow and green segments on the lower bar indicate the fraction of residues that contain outliers for  $\geq 3$ , 2, 1 and 0 types of geometric quality criteria respectively. A grey segment represents the fraction of residues that are not modelled. The numeric value for each fraction is indicated below the corresponding segment, with a dot representing fractions  $\leq 5\%$ . The upper red bar (where present) indicates the fraction of residues that have poor fit to the electron density. The numeric value is given above the bar.

Mol	Chain	Length	Quality of chain
1	A	677	<div> <div>13%</div> <div>41% 37% 10% • 10%</div> </div>
1	B	677	<div> <div>9%</div> <div>40% 40% 10% • 9%</div> </div>
2	X	134	<div> <div>12%</div> <div>32% 41% 13% 14%</div> </div>
2	Y	134	<div> <div>10%</div> <div>31% 43% 10% • 14%</div> </div>

The following table lists non-polymeric compounds, carbohydrate monomers and non-standard residues in protein, DNA, RNA chains that are outliers for geometric or electron-density-fit crite-



ria:

Mol	Type	Chain	Res	Chirality	Geometry	Clashes	Electron density
3	ATP	B	1678	-	-	X	-



## 2 Entry composition

There are 3 unique types of molecules in this entry. The entry contains 11906 atoms, of which 0 are hydrogens and 0 are deuteriums.

In the tables below, the ZeroOcc column contains the number of atoms modelled with zero occupancy, the AltConf column contains the number of residues with at least one atom in alternate conformation and the Trace column contains the number of residues modelled with at most 2 atoms.

- Molecule 1 is a protein called ATP-DEPENDENT MOLECULAR CHAPERONE HSP82.

Mol	Chain	Residues	Atoms					ZeroOcc	AltConf	Trace
1	A	609	Total	C	N	O	S	0	0	0
			4923	3147	804	963	9			
1	B	618	Total	C	N	O	S	0	0	0
			4997	3195	816	977	9			

- Molecule 2 is a protein called CO-CHAPERONE PROTEIN SBA1.

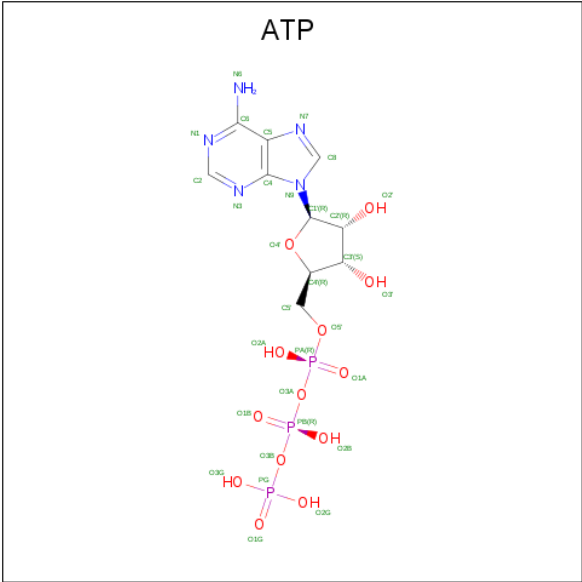
Mol	Chain	Residues	Atoms					ZeroOcc	AltConf	Trace
2	X	115	Total	C	N	O	S	0	0	0
			962	621	154	185	2			
2	Y	115	Total	C	N	O	S	0	0	0
			962	621	154	185	2			

There are 2 discrepancies between the modelled and reference sequences:

Chain	Residue	Modelled	Actual	Comment	Reference
X	127	ALA	GLU	engineered mutation	UNP P28707
Y	127	ALA	GLU	engineered mutation	UNP P28707

- Molecule 3 is ADENOSINE-5'-TRIPHOSPHATE (three-letter code: ATP) (formula: C<sub>10</sub>H<sub>16</sub>N<sub>5</sub>O<sub>13</sub>P<sub>3</sub>).





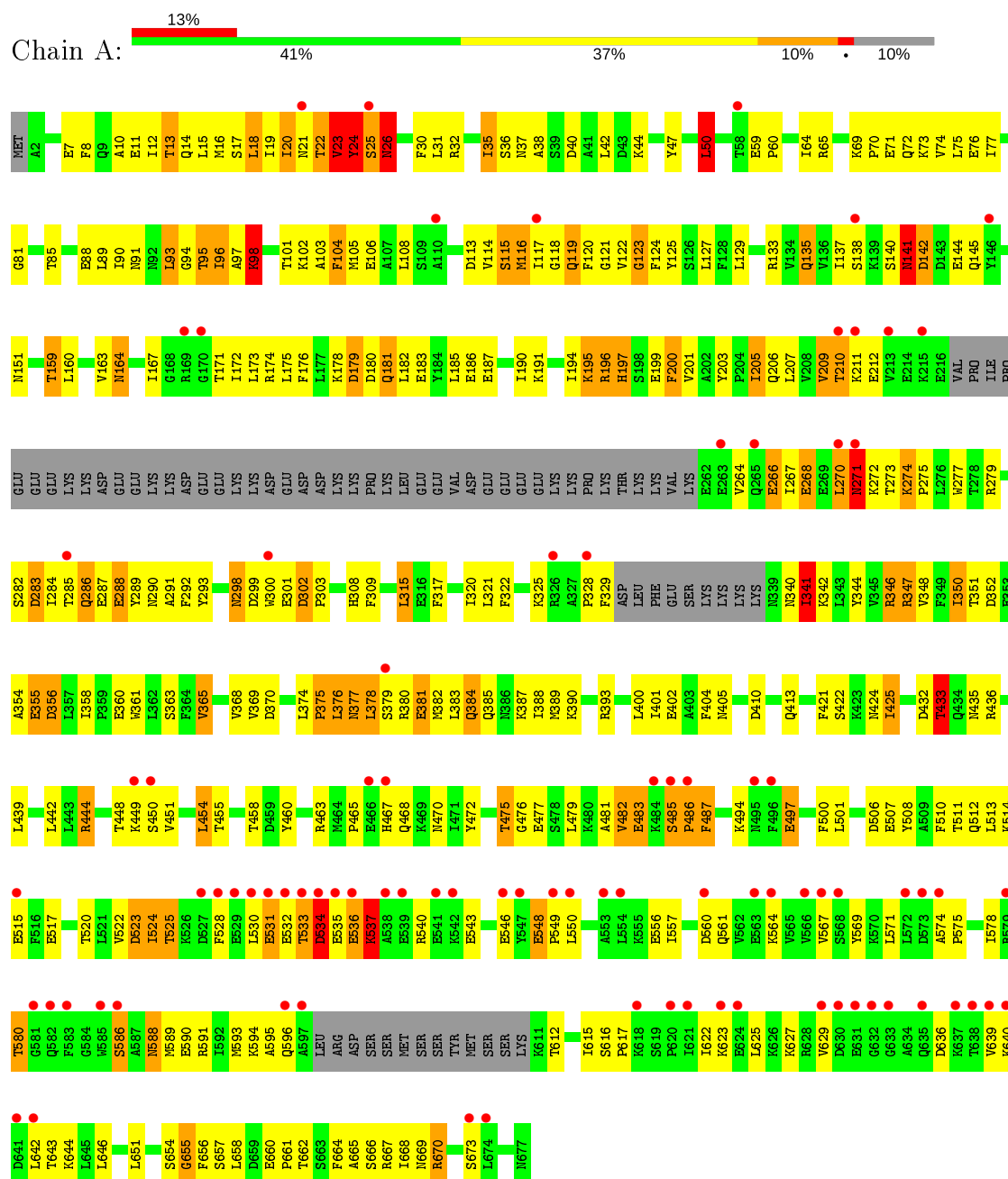
Mol	Chain	Residues	Atoms					ZeroOcc	AltConf
3	A	1	Total	C	N	O	P	0	0
			31	10	5	13	3		
3	B	1	Total	C	N	O	P	0	0
			31	10	5	13	3		



### 3 Residue-property plots

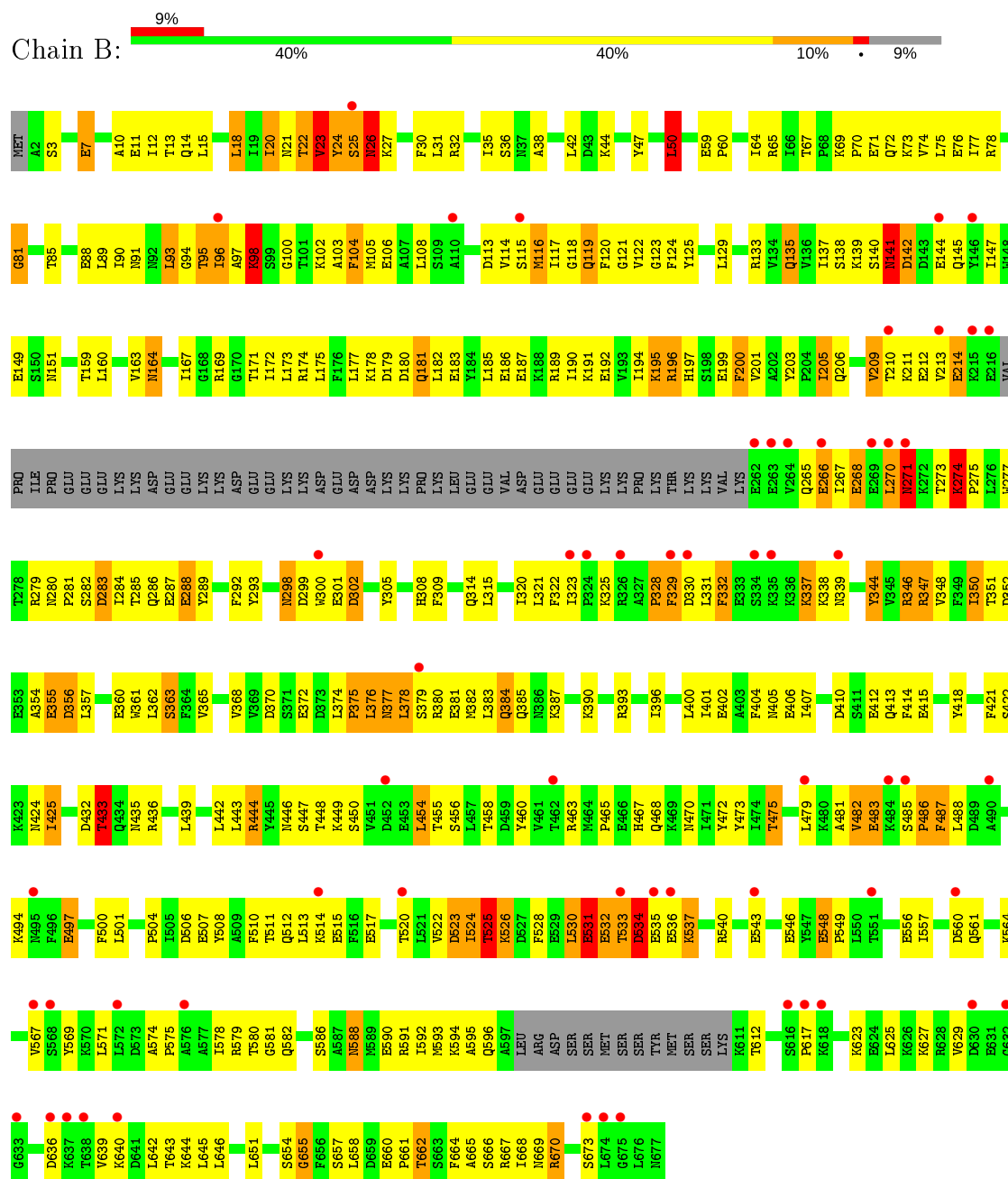
These plots are drawn for all protein, RNA and DNA chains in the entry. The first graphic for a chain summarises the proportions of the various outlier classes displayed in the second graphic. The second graphic shows the sequence view annotated by issues in geometry and electron density. Residues are color-coded according to the number of geometric quality criteria for which they contain at least one outlier: green = 0, yellow = 1, orange = 2 and red = 3 or more. A red dot above a residue indicates a poor fit to the electron density ( $\text{RSRZ} > 2$ ). Stretches of 2 or more consecutive residues without any outlier are shown as a green connector. Residues present in the sample, but not in the model, are shown in grey.

#### • Molecule 1: ATP-DEPENDENT MOLECULAR CHAPERONE HSP82





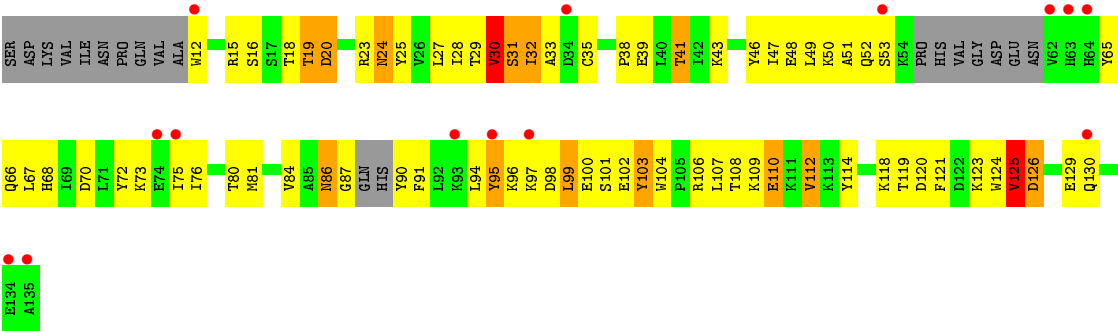
● Molecule 1: ATP-DEPENDENT MOLECULAR CHAPERONE HSP82







● Molecule 2: CO-CHAPERONE PROTEIN SBA1





## 4 Data and refinement statistics

Property	Value	Source
Space group	P 41 21 2	Depositor
Cell constants a, b, c, $\alpha$ , $\beta$ , $\gamma$	126.73 Å   126.73 Å   279.78 Å 90.00°   90.00°   90.00°	Depositor
Resolution (Å)	115.47 – 3.10 39.82 – 3.50	Depositor EDS
% Data completeness (in resolution range)	68.2 (115.47-3.10) 83.9 (39.82-3.50)	Depositor EDS
$R_{merge}$	0.19	Depositor
$R_{sym}$	(Not available)	Depositor
$\langle I/\sigma(I) \rangle$ <sup>1</sup>	2.06 (at 3.48 Å)	Xtriage
Refinement program	REFMAC 5.2.0019	Depositor
R, $R_{free}$	0.312   ,   0.353 0.350   ,   0.368	Depositor DCC
$R_{free}$ test set	1250 reflections (5.04%)	wwPDB-VP
Wilson B-factor (Å <sup>2</sup> )	87.3	Xtriage
Anisotropy	0.355	Xtriage
Bulk solvent $k_{sol}$ (e/Å <sup>3</sup> ), $B_{sol}$ (Å <sup>2</sup> )	0.33 , 56.6	EDS
L-test for twinning <sup>2</sup>	$\langle  L  \rangle = 0.44$ , $\langle L^2 \rangle = 0.27$	Xtriage
Estimated twinning fraction	No twinning to report.	Xtriage
$F_o, F_c$ correlation	0.78	EDS
Total number of atoms	11906	wwPDB-VP
Average B, all atoms (Å <sup>2</sup> )	71.0	wwPDB-VP

Xtriage's analysis on translational NCS is as follows: *The largest off-origin peak in the Patterson function is 2.92% of the height of the origin peak. No significant pseudotranslation is detected.*

<sup>1</sup>Intensities estimated from amplitudes.

<sup>2</sup>Theoretical values of  $\langle |L| \rangle$ ,  $\langle L^2 \rangle$  for acentric reflections are 0.5, 0.333 respectively for untwinned datasets, and 0.375, 0.2 for perfectly twinned datasets.



## 5 Model quality

### 5.1 Standard geometry

Bond lengths and bond angles in the following residue types are not validated in this section: ATP

The Z score for a bond length (or angle) is the number of standard deviations the observed value is removed from the expected value. A bond length (or angle) with  $|Z| > 5$  is considered an outlier worth inspection. RMSZ is the root-mean-square of all Z scores of the bond lengths (or angles).

Mol	Chain	Bond lengths		Bond angles	
		RMSZ	# $ Z  > 5$	RMSZ	# $ Z  > 5$
1	A	0.46	0/5004	0.67	2/6743 (0.0%)
1	B	0.46	0/5080	0.67	1/6844 (0.0%)
2	X	0.50	1/986 (0.1%)	0.62	0/1335
2	Y	0.46	0/986	0.62	0/1335
All	All	0.46	1/12056 (0.0%)	0.67	3/16257 (0.0%)

Chiral center outliers are detected by calculating the chiral volume of a chiral center and verifying if the center is modelled as a planar moiety or with the opposite hand. A planarity outlier is detected by checking planarity of atoms in a peptide group, atoms in a mainchain group or atoms of a sidechain that are expected to be planar.

Mol	Chain	#Chirality outliers	#Planarity outliers
1	A	0	5
1	B	0	4
All	All	0	9

All (1) bond length outliers are listed below:

Mol	Chain	Res	Type	Atoms	Z	Observed(Å)	Ideal(Å)
2	X	134	GLU	CG-CD	5.53	1.60	1.51

All (3) bond angle outliers are listed below:

Mol	Chain	Res	Type	Atoms	Z	Observed(°)	Ideal(°)
1	A	50	LEU	CA-CB-CG	6.01	129.13	115.30
1	B	50	LEU	CA-CB-CG	5.92	128.92	115.30
1	A	24	TYR	N-CA-CB	5.08	119.75	110.60

There are no chirality outliers.

5 of 9 planarity outliers are listed below:



Mol	Chain	Res	Type	Group
1	A	11	GLU	Peptide
1	A	271	ASN	Peptide
1	A	384	GLN	Peptide
1	A	531	GLU	Peptide
1	A	536	GLU	Peptide

## 5.2 Too-close contacts

In the following table, the Non-H and H(model) columns list the number of non-hydrogen atoms and hydrogen atoms in the chain respectively. The H(added) column lists the number of hydrogen atoms added and optimized by MolProbity. The Clashes column lists the number of clashes within the asymmetric unit, whereas Symm-Clashes lists symmetry related clashes.

Mol	Chain	Non-H	H(model)	H(added)	Clashes	Symm-Clashes
1	A	4923	0	4960	296	0
1	B	4997	0	5037	316	0
2	X	962	0	936	62	0
2	Y	962	0	936	66	0
3	A	31	0	12	5	0
3	B	31	0	12	13	0
All	All	11906	0	11893	701	0

The all-atom clashscore is defined as the number of clashes found per 1000 atoms (including hydrogen atoms). The all-atom clashscore for this structure is 30.

The worst 5 of 701 close contacts within the same asymmetric unit are listed below, sorted by their clash magnitude.

Atom-1	Atom-2	Interatomic distance (Å)	Clash overlap (Å)
1:B:331:LEU:HB3	1:B:332:PHE:HA	1.18	1.17
2:Y:18:THR:HG23	2:Y:120:ASP:HB2	1.18	1.17
1:B:117:ILE:HB	1:B:346:ARG:HD2	1.21	1.13
1:A:475:THR:HG23	1:A:588:ASN:HD21	1.00	1.11
2:X:18:THR:HG23	2:X:120:ASP:HB2	1.16	1.11

There are no symmetry-related clashes.



## 5.3 Torsion angles ⓘ

### 5.3.1 Protein backbone ⓘ

In the following table, the Percentiles column shows the percent Ramachandran outliers of the chain as a percentile score with respect to all X-ray entries followed by that with respect to entries of similar resolution.

The Analysed column shows the number of residues for which the backbone conformation was analysed, and the total number of residues.

Mol	Chain	Analysed	Favoured	Allowed	Outliers	Percentiles	
1	A	601/677 (89%)	447 (74%)	107 (18%)	47 (8%)	1	5
1	B	612/677 (90%)	447 (73%)	117 (19%)	48 (8%)	1	5
2	X	109/134 (81%)	83 (76%)	18 (16%)	8 (7%)	1	6
2	Y	109/134 (81%)	82 (75%)	19 (17%)	8 (7%)	1	6
All	All	1431/1622 (88%)	1059 (74%)	261 (18%)	111 (8%)	1	5

5 of 111 Ramachandran outliers are listed below:

Mol	Chain	Res	Type
1	A	23	VAL
1	A	24	TYR
1	A	25	SER
1	A	98	LYS
1	A	164	ASN

### 5.3.2 Protein sidechains ⓘ

In the following table, the Percentiles column shows the percent sidechain outliers of the chain as a percentile score with respect to all X-ray entries followed by that with respect to entries of similar resolution.

The Analysed column shows the number of residues for which the sidechain conformation was analysed, and the total number of residues.

Mol	Chain	Analysed	Rotameric	Outliers	Percentiles	
1	A	546/615 (89%)	454 (83%)	92 (17%)	2	9
1	B	554/615 (90%)	457 (82%)	97 (18%)	2	8
2	X	106/124 (86%)	84 (79%)	22 (21%)	1	5
2	Y	106/124 (86%)	85 (80%)	21 (20%)	1	5
All	All	1312/1478 (89%)	1080 (82%)	232 (18%)	2	8



5 of 232 residues with a non-rotameric sidechain are listed below:

Mol	Chain	Res	Type
1	B	104	PHE
1	B	274	LYS
2	Y	24	ASN
1	B	113	ASP
1	B	160	LEU

Some sidechains can be flipped to improve hydrogen bonding and reduce clashes. 5 of 25 such sidechains are listed below:

Mol	Chain	Res	Type
1	A	467	HIS
1	A	588	ASN
1	B	561	GLN
1	A	561	GLN
1	B	72	GLN

### 5.3.3 RNA ⓘ

There are no RNA molecules in this entry.

## 5.4 Non-standard residues in protein, DNA, RNA chains ⓘ

There are no non-standard protein/DNA/RNA residues in this entry.

## 5.5 Carbohydrates ⓘ

There are no carbohydrates in this entry.

## 5.6 Ligand geometry ⓘ

2 ligands are modelled in this entry.

In the following table, the Counts columns list the number of bonds (or angles) for which Mogul statistics could be retrieved, the number of bonds (or angles) that are observed in the model and the number of bonds (or angles) that are defined in the Chemical Component Dictionary. The Link column lists molecule types, if any, to which the group is linked. The Z score for a bond length (or angle) is the number of standard deviations the observed value is removed from the expected value. A bond length (or angle) with  $|Z| > 2$  is considered an outlier worth inspection. RMSZ is the root-mean-square of all Z scores of the bond lengths (or angles).



Mol	Type	Chain	Res	Link	Bond lengths			Bond angles		
					Counts	RMSZ	# Z  > 2	Counts	RMSZ	# Z  > 2
3	ATP	A	1678	1	26,33,33	1.08	2 (7%)	31,52,52	1.88	6 (19%)
3	ATP	B	1678	-	26,33,33	0.93	1 (3%)	31,52,52	2.00	7 (22%)

In the following table, the Chirals column lists the number of chiral outliers, the number of chiral centers analysed, the number of these observed in the model and the number defined in the Chemical Component Dictionary. Similar counts are reported in the Torsion and Rings columns. '-' means no outliers of that kind were identified.

Mol	Type	Chain	Res	Link	Chirals	Torsions	Rings
3	ATP	A	1678	1	-	3/18/38/38	0/3/3/3
3	ATP	B	1678	-	-	9/18/38/38	0/3/3/3

All (3) bond length outliers are listed below:

Mol	Chain	Res	Type	Atoms	Z	Observed(Å)	Ideal(Å)
3	A	1678	ATP	C5-C4	2.93	1.48	1.40
3	B	1678	ATP	C5-C4	2.33	1.47	1.40
3	A	1678	ATP	C2-N3	2.14	1.35	1.32

The worst 5 of 13 bond angle outliers are listed below:

Mol	Chain	Res	Type	Atoms	Z	Observed(°)	Ideal(°)
3	B	1678	ATP	PB-O3B-PG	-5.41	114.27	132.83
3	A	1678	ATP	PA-O3A-PB	-5.30	114.63	132.83
3	A	1678	ATP	PB-O3B-PG	-5.18	115.04	132.83
3	B	1678	ATP	PA-O3A-PB	-4.96	115.80	132.83
3	B	1678	ATP	C3'-C2'-C1'	3.60	106.39	100.98

There are no chirality outliers.

5 of 12 torsion outliers are listed below:

Mol	Chain	Res	Type	Atoms
3	A	1678	ATP	PB-O3A-PA-O5'
3	A	1678	ATP	O4'-C4'-C5'-O5'
3	A	1678	ATP	C3'-C4'-C5'-O5'
3	B	1678	ATP	C3'-C4'-C5'-O5'
3	B	1678	ATP	O4'-C4'-C5'-O5'

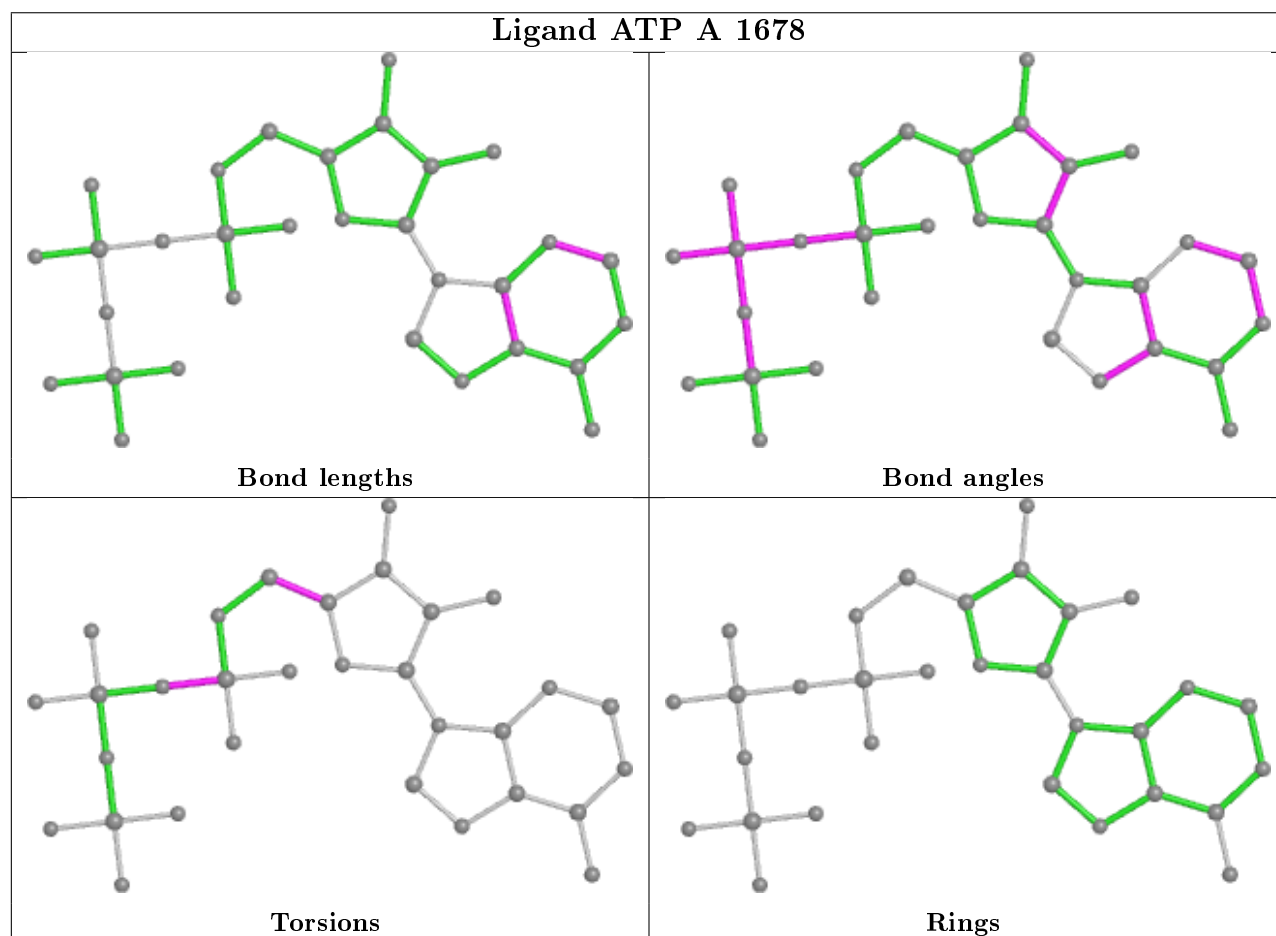
There are no ring outliers.

2 monomers are involved in 18 short contacts:

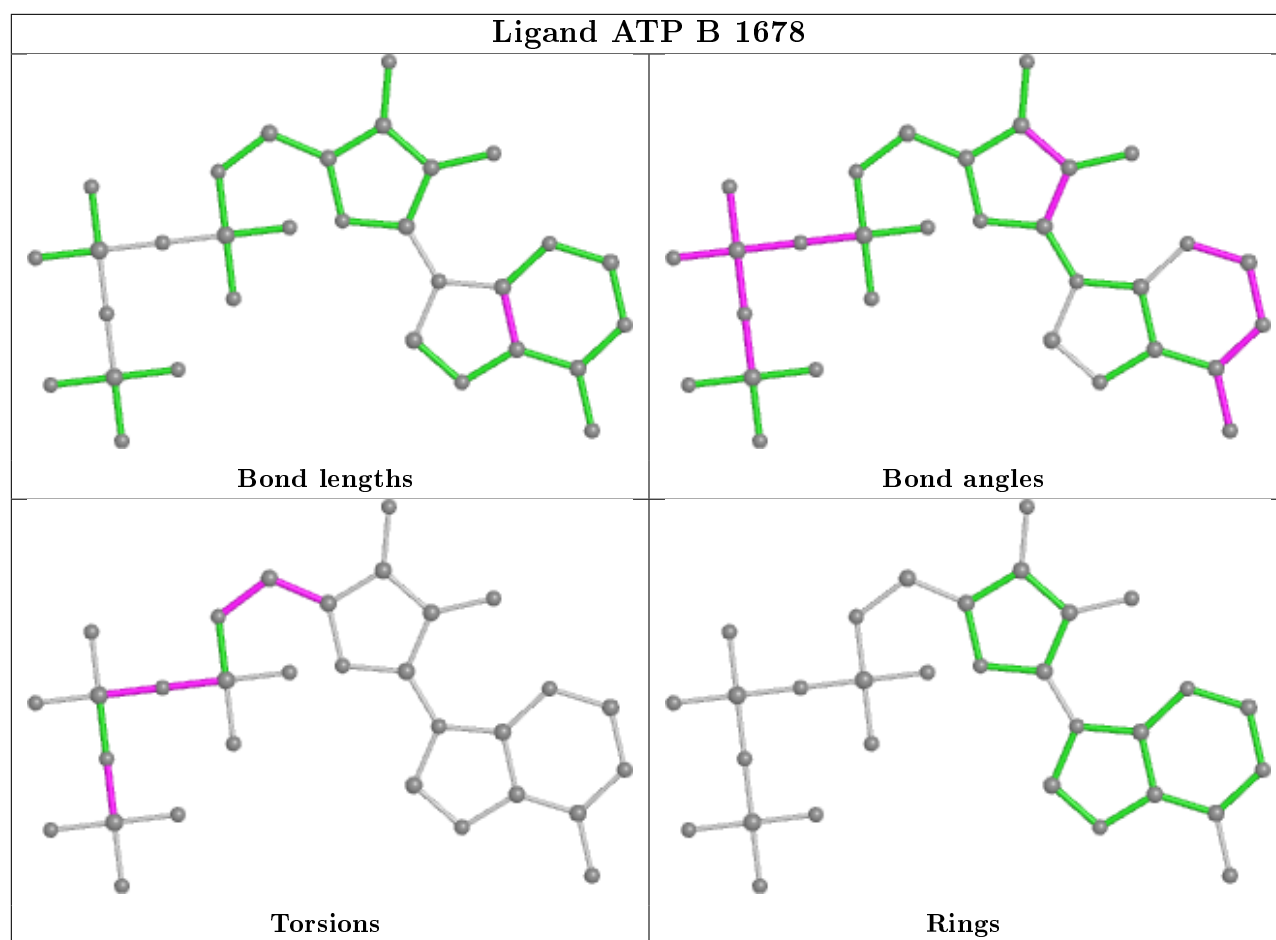


Mol	Chain	Res	Type	Clashes	Symm-Clashes
3	A	1678	ATP	5	0
3	B	1678	ATP	13	0

The following is a two-dimensional graphical depiction of Mogul quality analysis of bond lengths, bond angles, torsion angles, and ring geometry for all instances of the Ligand of Interest. In addition, ligands with molecular weight > 250 and outliers as shown on the validation Tables will also be included. For torsion angles, if less than 5% of the Mogul distribution of torsion angles is within 10 degrees of the torsion angle in question, then that torsion angle is considered an outlier. Any bond that is central to one or more torsion angles identified as an outlier by Mogul will be highlighted in the graph. For rings, the root-mean-square deviation (RMSD) between the ring in question and similar rings identified by Mogul is calculated over all ring torsion angles. If the average RMSD is greater than 60 degrees and the minimal RMSD between the ring in question and any Mogul-identified rings is also greater than 60 degrees, then that ring is considered an outlier. The outliers are highlighted in purple. The color gray indicates Mogul did not find sufficient equivalents in the CSD to analyse the geometry.







## 5.7 Other polymers [i](#)

There are no such residues in this entry.

## 5.8 Polymer linkage issues [i](#)

There are no chain breaks in this entry.



## 6 Fit of model and data [i](#)

### 6.1 Protein, DNA and RNA chains [i](#)

In the following table, the column labelled ‘#RSRZ> 2’ contains the number (and percentage) of RSRZ outliers, followed by percent RSRZ outliers for the chain as percentile scores relative to all X-ray entries and entries of similar resolution. The OWAB column contains the minimum, median, 95<sup>th</sup> percentile and maximum values of the occupancy-weighted average B-factor per residue. The column labelled ‘Q< 0.9’ lists the number of (and percentage) of residues with an average occupancy less than 0.9.

Mol	Chain	Analysed	<RSRZ>	#RSRZ>2	OWAB(Å <sup>2</sup> )	Q<0.9
1	A	609/677 (89%)	0.99	88 (14%) <b>2</b> <b>1</b>	63, 72, 74, 79	0
1	B	618/677 (91%)	0.81	59 (9%) <b>8</b> <b>2</b>	66, 72, 75, 88	0
2	X	115/134 (85%)	0.78	16 (13%) <b>2</b> <b>1</b>	69, 71, 74, 82	0
2	Y	115/134 (85%)	0.88	14 (12%) <b>4</b> <b>1</b>	69, 71, 74, 83	0
All	All	1457/1622 (89%)	0.89	177 (12%) <b>4</b> <b>1</b>	63, 72, 74, 88	0

The worst 5 of 177 RSRZ outliers are listed below:

Mol	Chain	Res	Type	RSRZ
1	A	538	ALA	8.9
1	A	25	SER	7.3
1	B	673	SER	7.0
1	A	549	PRO	6.9
1	A	532	GLU	6.7

### 6.2 Non-standard residues in protein, DNA, RNA chains [i](#)

There are no non-standard protein/DNA/RNA residues in this entry.

### 6.3 Carbohydrates [i](#)

There are no carbohydrates in this entry.

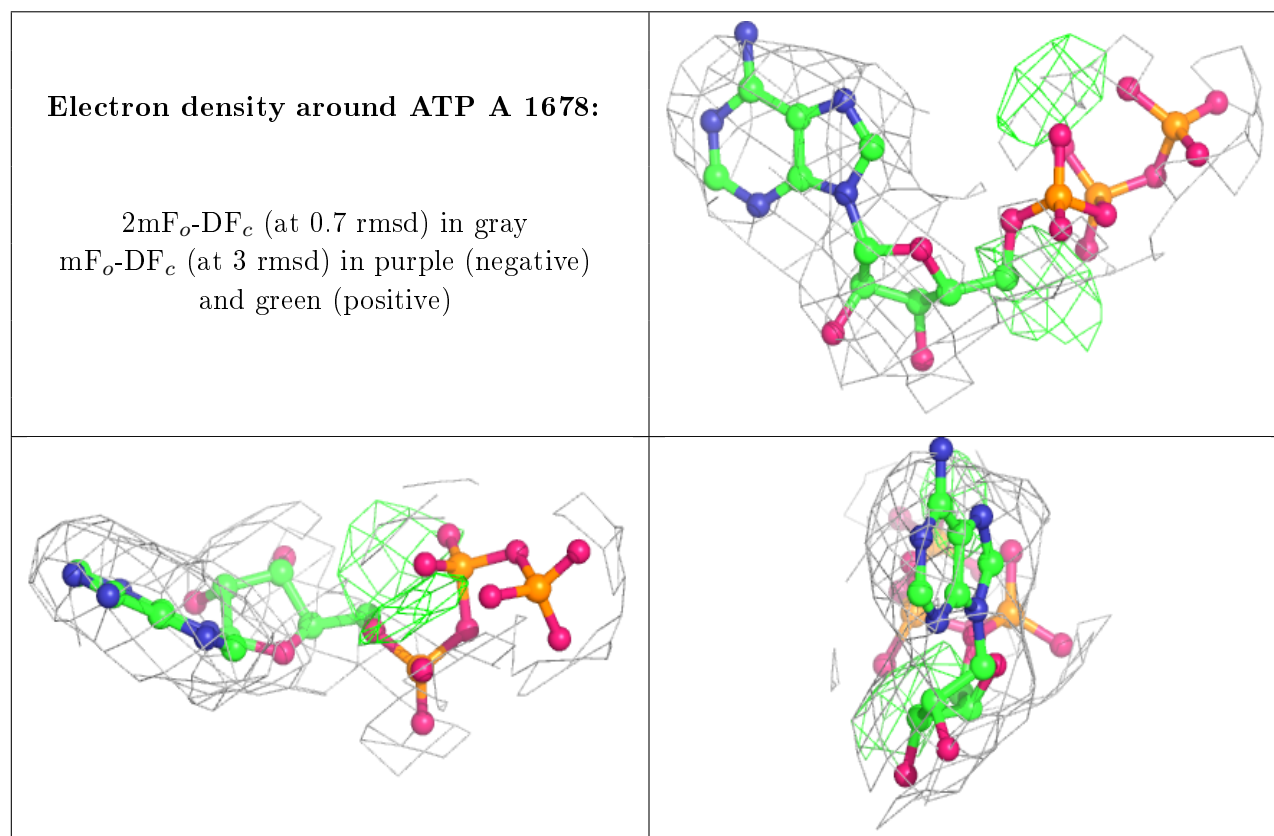
### 6.4 Ligands [i](#)

In the following table, the Atoms column lists the number of modelled atoms in the group and the number defined in the chemical component dictionary. The B-factors column lists the minimum, median, 95<sup>th</sup> percentile and maximum values of B factors of atoms in the group. The column labelled ‘Q< 0.9’ lists the number of atoms with occupancy less than 0.9.

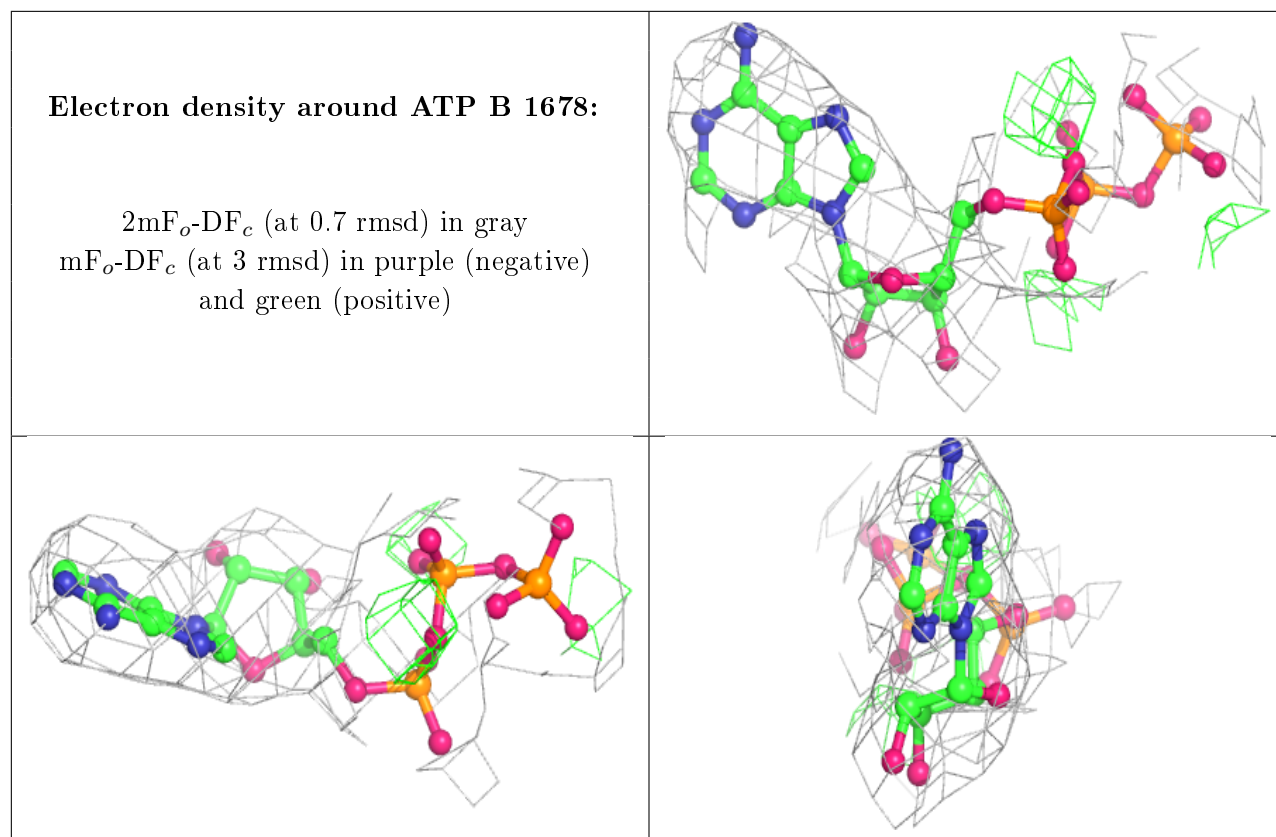


Mol	Type	Chain	Res	Atoms	RSCC	RSR	B-factors( $\text{\AA}^2$ )	Q<0.9
3	ATP	A	1678	31/31	0.94	0.19	21,30,32,33	0
3	ATP	B	1678	31/31	0.94	0.19	18,29,31,32	0

The following is a graphical depiction of the model fit to experimental electron density of all instances of the Ligand of Interest. In addition, ligands with molecular weight > 250 and outliers as shown on the geometry validation Tables will also be included. Each fit is shown from different orientation to approximate a three-dimensional view.







## 6.5 Other polymers [i](#)

There are no such residues in this entry.